



In this issue

- [Happy New Year](#)
- [Household Economic Survey](#)
- [Consumers price index](#)
- [Interactive games](#)
- [New Zealand in Profile: 2011](#)
- [Food news](#)
- [Follow us on Twitter](#)
- [Population clock](#)
- [RSS feed](#)
- [2011 Census forms](#)
- [More census resources](#)
- [Schools Corner](#)
- [Contact us](#)

Population clock

4,397,728

(New Zealand's population at 27 January 2011)

RSS feeds now available

Stay informed by using our [RSS feeds](#) to personalise and simplify how you access our releases.



2011 Census forms

Want to have a sneak peak what the census forms will look like for 2011? See them on the [2011 Census forms page](#).

More census resources

Check out [CensusAtSchool](#). It's a great website for years 5–13. The nationwide online survey provides real, relevant data and classroom activities to enhance statistical enquiry across the curriculum.

Happy New Year!

We trust you had a fantastic summer break and are ready for another busy school year. Take a moment to reflect on some interesting facts from last summer with our holiday e-card.

[Statistics New Zealand holiday e-card](#)

Household Economic Survey

Results from the Household Economic Survey (HES) provide a comprehensive range of statistics relating to household income and expenditure, and personal and household demographic information.

The latest figures released for the HES cover the year ended 30 June 2007 to the year ended 30 June 2010. They show some interesting changes over the three years.

- Average weekly household expenditure increased by 6.1 percent, from \$952 to \$1,010.

The following expenditure groups had the largest changes:

- housing and household utilities (eg rent, electricity), up \$40 to \$253
- food, up \$15 to \$178
- communication (eg phone services), up \$5 to \$36
- household contents and services (eg furniture, tools), down \$5 to \$45.

The HES data is available on our website and can be used to develop a fun and informative activity for your class.

For example, open the Excel file and look at table 1.

Which grocery food item had the highest percentage change over the three years?

Oils and fats increased the most (30.7 percent). What factors might have contributed to the increase over this period?

[Household Economic Survey data](#)

Consumers Price Index: December 2010 quarter

In the December 2010 quarter, compared with the September 2010 quarter:

- The consumers price index (CPI) rose 2.3 percent, influenced by a rise in goods and services tax (GST) from 12.5 percent to 15 percent on 1 October 2010.
- This is the largest quarterly increase since a 3.5 percent rise in the September 1989 quarter, when GST rose from 10 percent to 12.5 percent on 1 July 1989.
- Transport prices rose 4.3 percent, reflecting higher prices for petrol and international air transport.

Schools Corner

For more activities refer to the Schools Corner section of the Statistics New Zealand website: www.stats.govt.nz/schools-corner

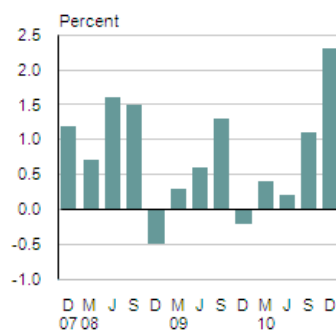
Contact us

Phone: Charlotte Carruthers
– 04 931 4747
Email: educationsservices@stats.govt.nz

- Food prices rose 2.1 percent, with higher grocery food prices the key contributor.
- Housing and household utility prices rose 1.6 percent, with higher prices for the purchase of new housing and property maintenance services.
- Recreation and culture prices rose 2.9 percent, influenced by higher prices for package holidays.

Consumers price index

Quarterly change



Source: Statistics New Zealand

[Consumers price index information](#)

Interactive games launched

We are pleased to announce that [interactive games](#) are now available at Schools Corner on the Statistics NZ website.



The games are free for teachers to use. They're a great tool, and a fun and engaging way for students to understand and learn about basic statistics.

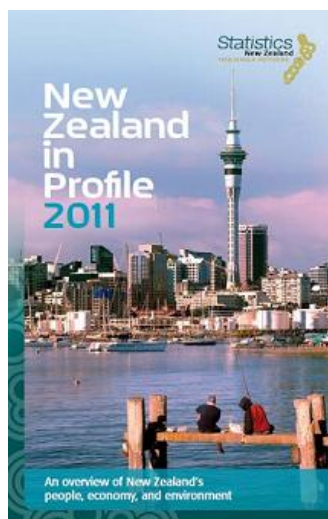
By March 2011 we will have graded the games into curriculum levels to help teachers identify which games are most appropriate for their students.

Please note these games are mostly suitable for students aged 15 years and younger.

[Trial the new Interactive Games](#)

New Zealand in Profile: 2011

[New Zealand in Profile:2011](#) is now available online and in hard copy. It is a great little resource for teaching that provides an overview of New Zealand's people, economy, and environment.



Topics covered in the *New Zealand in Profile* include:

- population
- economy
- income
- education
- labour force
- climate.

Why not use the *New Zealand in Profile* with your class?

If you would like to order *New Zealand in Profile:2011*, email: educationservices@stats.govt.nz. Please note only one set per class is available. We encourage the use of the online resource.

[Check out New Zealand in Profile](#)

Food news

Seasonal falls in vegetable prices were the key contributor to lower food prices in November and December 2010, compared with the month before.

Vegetable prices fell 7.9 percent in December with lower prices for tomato, lettuce, capsicum, cabbage, and broccoli.

[Food price index information](#)

Follow us on Twitter

Statistics NZ is now on Twitter! We would love you to [follow us](#) to receive our latest information releases.



If you do not want to receive Statzing! newsletters, [click here to unsubscribe](#).