

Embargoed until 10:45am – 11 December 2009

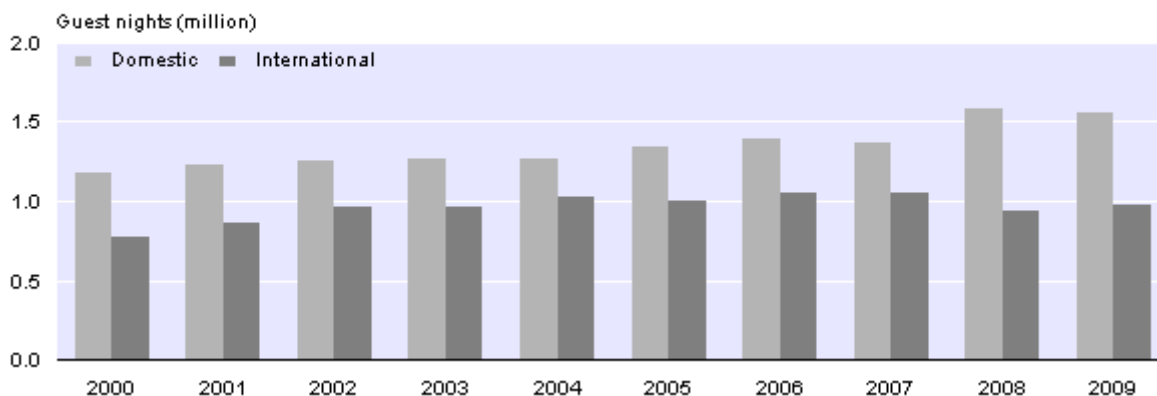
Accommodation Survey: October 2009

Highlights

Compared with October 2008:

- Total guest nights were 0.5 percent higher.
- International guest nights were up 5 percent, while domestic guest nights were down 2 percent.
- South Island guest nights were up 3 percent, but North Island guest nights were down 1 percent.
- Seven of the 12 regions had more guest nights.
- Otago and Canterbury recorded the largest guest night increases, driven by international guest nights.

Domestic and International Guest Nights
October 2000–09



Geoff Bascand
Government Statistician

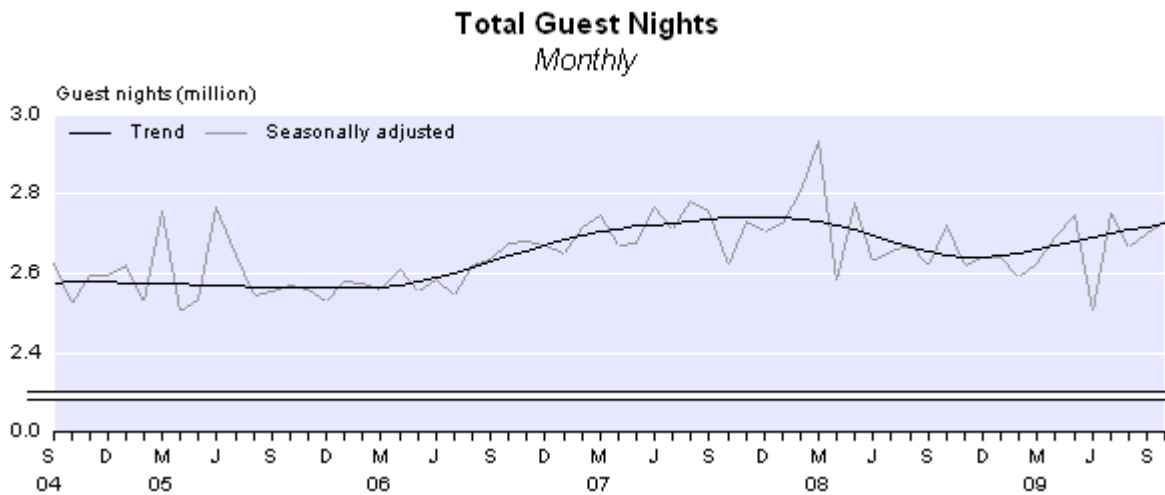
11 December 2009
ISSN 1178-0207

Commentary

Total guest nights

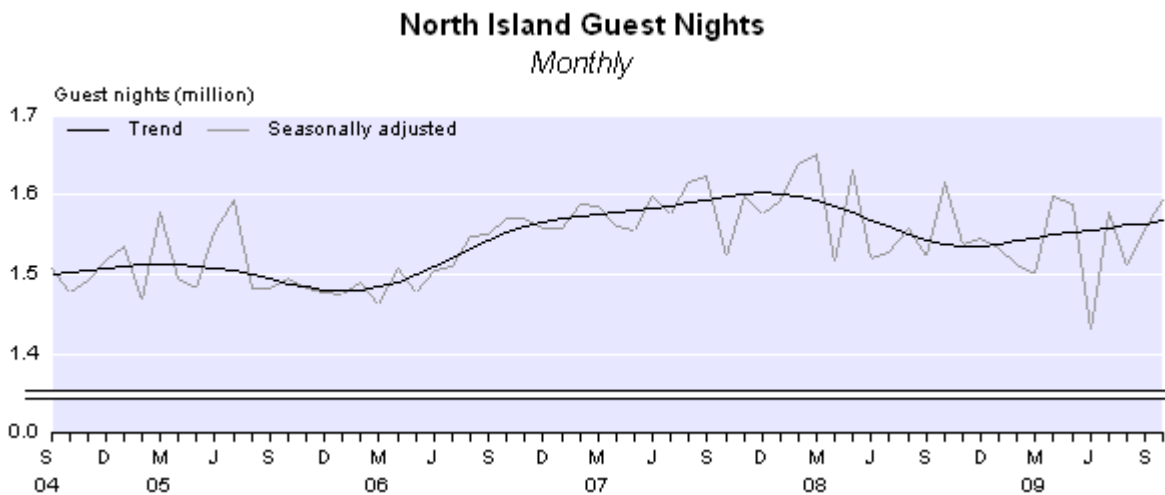
Total guest nights in short-term commercial accommodation were 2.5 million in October 2009, an increase of 0.5 percent from October 2008, and a 5 percent increase compared with October 2007.

The trend has been increasing in 2009, following a period of decline during the 2008 year. The trend level is now 3 percent higher than the previous low in December 2008, but is still 0.5 percent lower than the peak in December 2007.



Guest nights by island

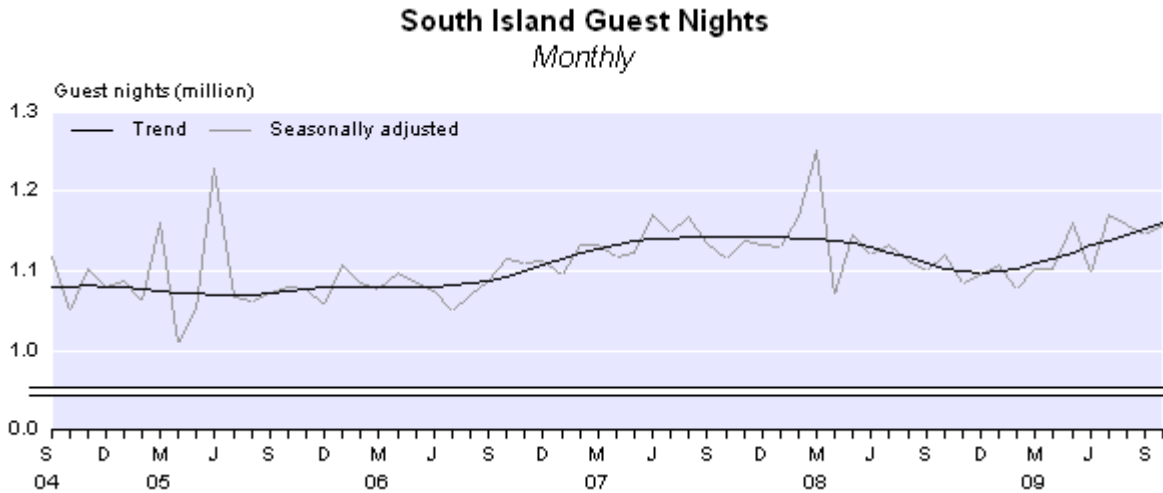
Guest nights in the North Island were 1.5 million in October 2009, a 1 percent decrease compared with October 2008, but a 5 percent increase compared with October 2007.



The trend for North Island guest nights began increasing in December 2008, after a period of decline from January 2008. The trend level is now 2 percent higher than the previous low in November 2008, but is still 2 percent lower than the series peak in December 2007.

Guest nights in the South Island were 1.0 million in October 2009, a 3 percent increase compared with October 2008 and up 4 percent on October 2007.

The trend in South Island guest nights has been increasing since December 2008, following a period of decline during the 2008 year. The trend level is 6 percent higher than the previous low in December 2008, and is now 2 percent higher than the recent peak in October 2007.



Guest nights by region

Seven of the 12 regions recorded more guest nights in October 2009 compared with October 2008, with all five South Island regions recording increases. The regions showing the largest increases were:

- Otago, up 12,000 (4 percent)
- Canterbury, up 10,000 (2 percent)
- Southland, up 6,000 (10 percent).

The region showing the largest decrease was Taranaki/Manawatu-Wanganui, down 13,000 (8 percent).

Comparison with short-term overseas visitor arrival statistics

[International Travel and Migration: October 2009](#) shows that short-term overseas visitor arrivals to New Zealand in October 2009 were up 13,400 (8 percent) from October 2008. This follows an increase of 14,700 (9 percent) in September 2009 compared with September 2008.

In October 2009 compared with October 2008, there were more visitors on holiday, up 8,400 (10 percent), and more people visiting friends and relatives, up 6,800 (14 percent), but fewer here on business trips, down 600 (3 percent).

New Zealand resident short-term departures for October 2009 were up 600 (less than 1 percent) from October 2008. This follows an increase of 1,200 (1 percent) in September 2009 compared with September 2008.

Origin of guests

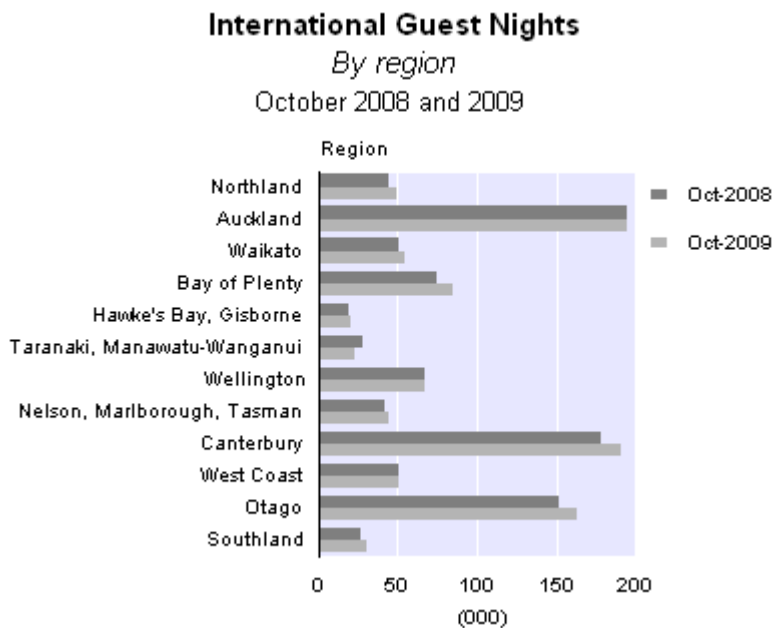
International visitors contributed 1.0 million guest nights in October 2009, an increase of 47,000 (5 percent) from October 2008. These visitors provided 33 percent of total guest nights in the North Island and 48 percent of those in the South Island.

In October 2009, there were 16,000 (3 percent) more international guest nights in the North Island than in October 2008. International guest nights in the South Island were up 31,000 (7 percent) over the same period.

The regions showing the largest increases in international guest nights were:

- Canterbury, up 13,000 (7 percent)
- Otago, up 11,000 (7 percent)
- Bay of Plenty, up 11,000 (14 percent).

Taranaki/Manawatu-Wanganui recorded the only decrease, down 5,000 (18 percent).



Domestic guest nights numbered 1.5 million, a decrease of 35,000 (2 percent) from October 2008. Seven of the 12 regions recorded fewer domestic guest nights in October 2009 than in October 2008.

In October 2009, domestic guest nights in North Island were down 36,000 (3 percent), with six of the seven North Island regions recording decreases compared with October 2008. While four of the five South Island regions had more domestic guest nights, the total number of domestic guest nights in the South Island was similar to October 2008.

The regions recording the largest decreases in domestic guest nights were:

- Bay of Plenty, down 15,000 (10 percent)
- Taranaki/Manawatu-Wanganui, down 8,000 (6 percent)
- Hawke's Bay/Gisborne, down 7,000 (8 percent)
- Waikato, down 7,000 (4 percent).

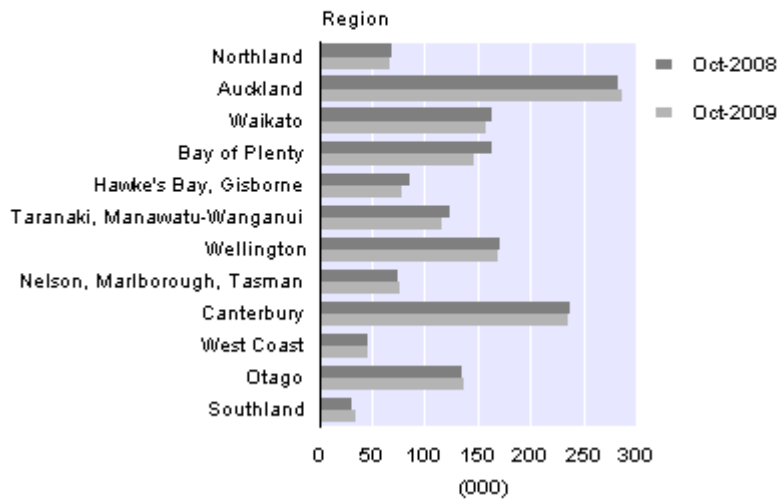
The largest increases were:

- Auckland, up 5,000 (2 percent)
- Southland, up 2,000 (7 percent).

Domestic Guest Nights

By region

October 2008 and 2009



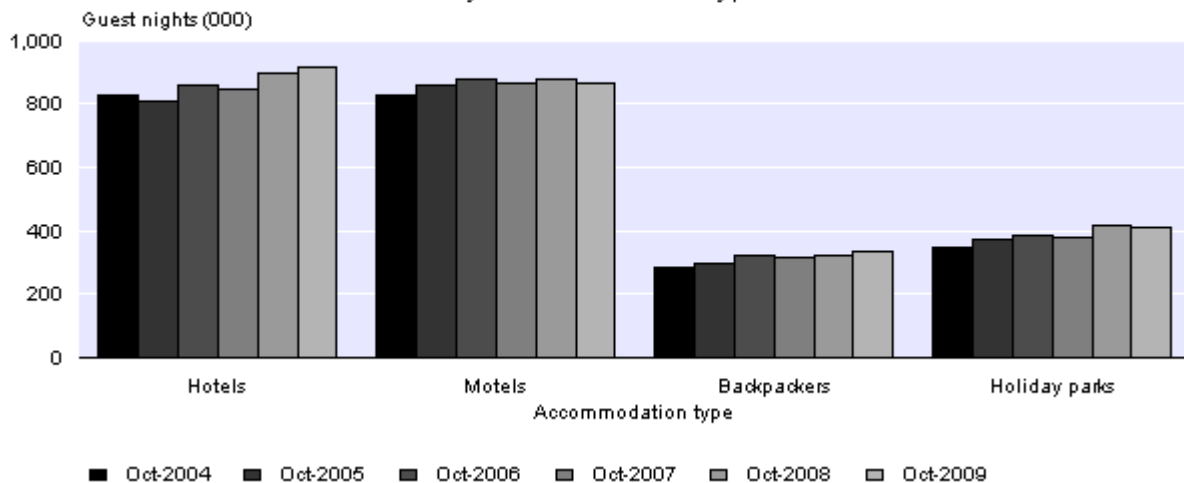
Guest nights by accommodation type

In October 2009, two of the four accommodation types had more guest nights than in October 2008:

- hotels, up 18,000 (2 percent)
- backpackers, up 16,000 (5 percent)
- motels, down 12,000 (1 percent)
- holiday parks, down 11,000 (3 percent).

Guest Nights

By accommodation type



In October 2009, hotels had the largest share of total guest nights (36 percent), followed by motels (34 percent), holiday parks (16 percent), and backpackers (13 percent).

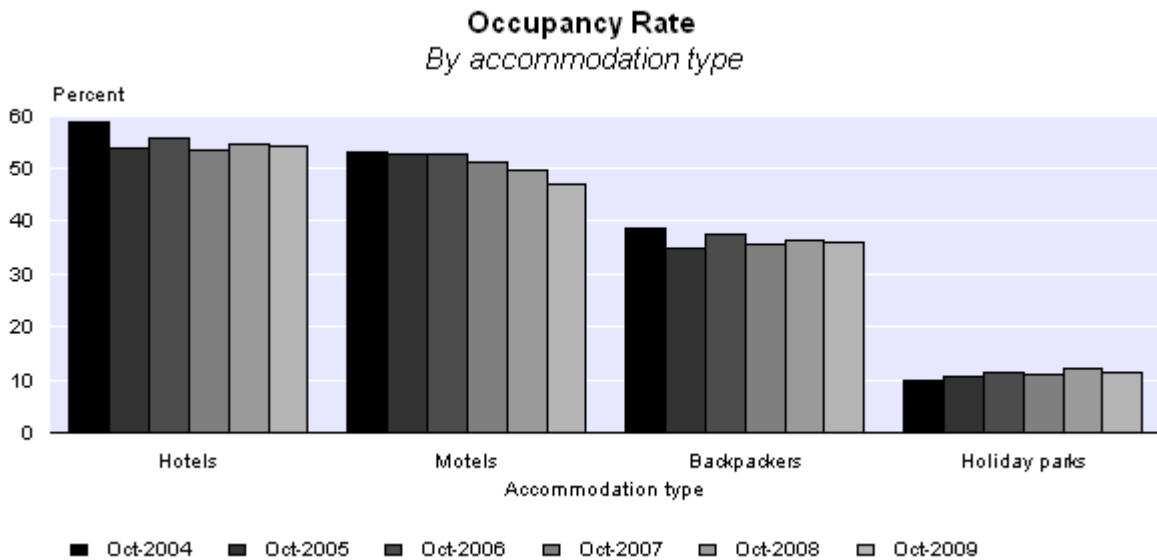
Occupancy rate

Excluding holiday parks, the occupancy rate in October 2009 was 46 percent, compared with 48 percent in October 2008. Accommodation capacity, excluding holiday parks, was 3 percent above the October 2008 level.

Hotels had the highest occupancy rate (54 percent) of all the accommodation types in October 2009, followed by motels (47 percent), and backpackers (36 percent).

Excluding the holiday parks category, seven of the 12 regions had lower occupancy rates in October 2009 than in October 2008. The regions with the highest occupancy rates were:

- Auckland (58.5 percent)
- Wellington (57.5 percent)
- Canterbury (47.2 percent).



Response rates

Response rates by accommodation type for October 2009			
Accommodation type	Establishments responding to questions on guest nights, guest arrivals, and stay unit nights	Proportion of guest-night estimate from actual data	Proportion of origin-of-guest estimate from actual data
	Percentage		
Hotels	86	97	85
Motels	83	87	72
Backpackers	86	84	64
Holiday parks	82	89	77
Total	84	90	76

When respondents do not answer questions in this survey, Statistics New Zealand estimates the missing information based on data from similar establishments in the same or similar regions. For more information, please see the 'Technical notes' section or contact Statistics NZ.

Survey change

From the September 2009 survey month, the following changes have been implemented for the Accommodation Survey:

- the 'hosted' accommodation group has been removed from the survey
- regional boundaries have been updated.

We have also updated data for the previous months based on the new regional boundaries and with the 'hosted' accommodation type removed. These updates will allow for continued time series comparison.

Two classifications have been renamed:

- 'backpackers/hostels' has been renamed 'backpackers'
- 'caravan parks/camping grounds' has been renamed 'holiday parks'.

However, the coverage remains unchanged.

These changes are the result of a joint review conducted by Statistics NZ and the Ministry of Tourism, which aimed to balance the need for high quality information against the need to reduce respondent load.

Statistics NZ would like to thank all respondents for participating in the Accommodation Survey. Their commitment and support enables us to produce an accurate picture of the evolving New Zealand economy.

Survey sponsorship

The Accommodation Survey is a monthly survey undertaken by Statistics NZ and sponsored by the Ministry of Tourism.

For technical information contact:
Christine Sadler or Tehseen Islam
Christchurch 03 964 8700
Email: info@stats.govt.nz.

Next release ...

Accommodation Survey: November 2009 will be released on 19 January 2010.

Technical notes

Population

The target population for this survey is all 'geographic units' (called 'establishments' in this publication) that are classified as short-term (less than one month) commercial accommodation providers operating in New Zealand. In terms of the Australian and New Zealand Standard Industrial Classification 2006 (ANZSIC06), the target population is taken from class 4400 (accommodation), and the part of class 4520 (pubs, taverns, and bars) that also provides accommodation.

The survey frame is all short-term commercial accommodation-providing geographic units belonging to an economically significant 'enterprise'. Economic significance is generally determined as being GST registered and having a turnover of at least \$30,000 per annum.

From the September 2009 survey month, the 'hosted' accommodation group has been removed from the survey and the regional boundaries updated. The data for the previous months has been updated based on the new regional boundaries and with the 'hosted' accommodation type removed. These updates allow for continued time series comparison.

Survey errors

This survey aims for 100 percent coverage of the population (a full census). In practice, however, an overall response rate of between 76 and 80 percent is usually achieved. The remaining units are given imputed values based upon the characteristics of similar establishments in the same or similar regions. Imputation introduces unknown errors into the estimates, and users of the data should bear this in mind. The size of these unknown errors is difficult to quantify.

Other errors occur for reasons such as respondent error, frame quality, and errors in processing. While every effort is made to minimise these errors, they will still occur. It is not possible to quantify their effect.

Trend estimates

For any series, the survey estimates can be broken down into three components: trend, seasonal, and irregular. While seasonally adjusted series have had the seasonal component removed, the trend series have had both the seasonal and the irregular components removed. Trend estimates reveal the underlying direction of movement in a series, and are likely to indicate turning points more accurately than seasonally adjusted estimates.

The accommodation trend series are calculated using the X-12-ARIMA seasonal adjustment package. They are based on optimal moving averages of the seasonally adjusted series, with an adjustment for outlying values. The X-12-ARIMA package is an updated version of X-11-ARIMA, developed by the U.S. Census Bureau.

The trend estimates towards the end of the series incorporate new data as it becomes available, and can therefore change as more observations are added to the series. Revisions can be particularly large if an observation is treated as an outlier in one month, but is found to be part of the underlying trend as further observations are added to the series. All trend estimates are subject to revisions each month, but normally only the last two or three estimates are likely to be substantially altered.

Trend estimates versus month-on-month comparisons

Trend estimates reveal the underlying direction of the movement in a series. In contrast, comparisons between one month and the same month in the previous year(s) do not take account of data recorded in between these periods, and are subject to one-off fluctuations. Reasons for fluctuations include changes in the timing of holidays, international crises, and large sporting and cultural events.

Seasonally adjusted estimates

The X-12-ARIMA package has been used to produce the seasonally adjusted estimates referred to in the Commentary text. Seasonal adjustment aims to eliminate the impact of regular seasonal events. These may be due to climatic effects (such as more guests staying in camping grounds during the summer) or calendar effects (such as holidays). This makes the data for adjacent months more comparable. All seasonally adjusted figures are subject to revision each month.

Further information about [seasonal adjustment](#) is available on the Statistics New Zealand website.

Classification of accommodation type

The predominant capacity provided determines the accommodation type. For instance, if a business provides both motel and camping ground accommodation, but the majority of its stay units are motel rooms, then it would be classified as a motel. The classification system used is the New Zealand Accommodation Classification, broadly defined below:

- Hotels: includes both hotels and resorts
- Motels: includes motor inns, apartments, and motels
- Backpackers: includes hostels
- Holiday parks: includes caravan parks and camping grounds.

From September 2009, the hosted accommodation type is no longer included in the survey.

Further information on the classification system is available on request.

Origin of guests

From November 2007, information on total domestic and international guest nights will be available on a monthly basis, but the breakdown by region or country will no longer be available.

Other definitions

Business frame

A register (maintained by Statistics NZ) of all economically significant businesses operating in New Zealand from which the survey population is drawn.

Establishment

The smallest statistical unit operating within a single physical location and owned by a single enterprise. The term is used to represent what is usually called the 'geographic unit' in other Statistics NZ publications.

Guest night

A guest night is equivalent to one guest spending one night at an establishment. For example, a motel with 15 guests spending two nights would report provision of 30 guest nights of accommodation.

Stay unit

The term used to describe the unit of accommodation that is available to be charged out to guests (for example a powered site in a caravan park, a bed in a backpackers, a room in a hotel or motel).

Capacity (stay unit nights available)

This is the basic measure of an establishment's accommodation capacity. It is defined as one stay unit multiplied by one night. For example, 10 units in a motel available for guest use (whether occupied or not) for the full 31 days in July would have an accommodation capacity of 310 stay unit nights.

Occupancy rate

This derived variable is calculated by dividing stay unit nights occupied by stay unit nights available. In the case of the motel above, if six of its 10 units were occupied every night in July, it would have $6 \times 31 = 186$ stay unit nights occupied, and its occupancy rate would be 60 percent.

Average length of stay

This derived variable is calculated by dividing total guest nights by total guest first nights.

More information

For more information, follow the [link](#) from the Technical notes of this release on the Statistics NZ website.

Confidentiality

Data collected and information contained in this publication must conform to the provisions of the Statistics Act 1975. This requires that published information maintains the confidentiality of individual respondents.

Copyright

Information obtained from Statistics NZ may be freely used, reproduced, or quoted unless otherwise specified. In all cases Statistics NZ must be acknowledged as the source.

Liability

While care has been used in processing, analysing, and extracting information, Statistics NZ gives no warranty that the information supplied is free from error. Statistics NZ shall not be liable for any loss suffered through the use, directly or indirectly, of any information, product, or service.

Timing

Timed statistical releases are delivered using postal and electronic services provided by third parties. Delivery of these releases may be delayed by circumstances outside the control of Statistics NZ. Statistics NZ accepts no responsibility for any such delays.

Tables

The following tables are printed with this Hot Off the Press and can also be downloaded from the Statistics NZ website in Excel format. If you do not have access to Excel, you may use the [Excel file viewer](#) to view, print and export the contents of the file.

1. Establishments, capacity, guest nights, occupancy rate, and average stay, by accommodation type
2. Occupancy rate excluding holiday parks, by region
3. Total guest nights
4. Seasonally adjusted and trend guest nights, by accommodation type
5. North Island guest nights
6. South Island guest nights
7. Regional guest nights
8. Domestic and international guest nights

Accommodation pivot tables

The [Accommodation pivot tables](#) provide more detailed information, breaking the survey variables down by regional tourism organisation areas and territorial authority areas. These tables can be downloaded from the Statistics NZ website (www.stats.govt.nz).