



# Hot Off The Press

LATEST STATISTICS FROM STATISTICS NEW ZEALAND

Embargoed until 10:45am – 2 February 2007

## External Migration

### December 2006

#### Highlights

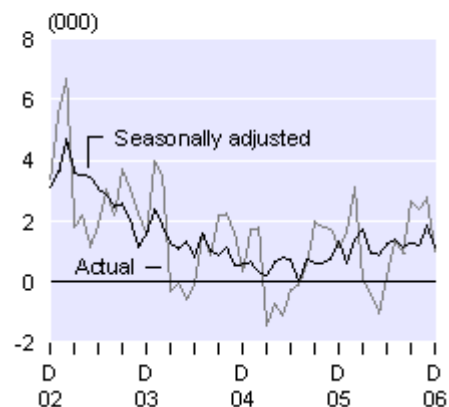
- Visitor arrivals (319,000) were up 4 percent on December 2005.
- There were more visitor arrivals from Australia (up 4,900) and the United Kingdom (up 2,400), but fewer from Japan (down 1,800).

On a seasonally adjusted basis:

- Visitor arrivals fell 1 percent between November and December 2006.
- Overseas trips by New Zealand residents were up 4 percent.
- Permanent and long-term arrivals exceeded departures by 1,200.

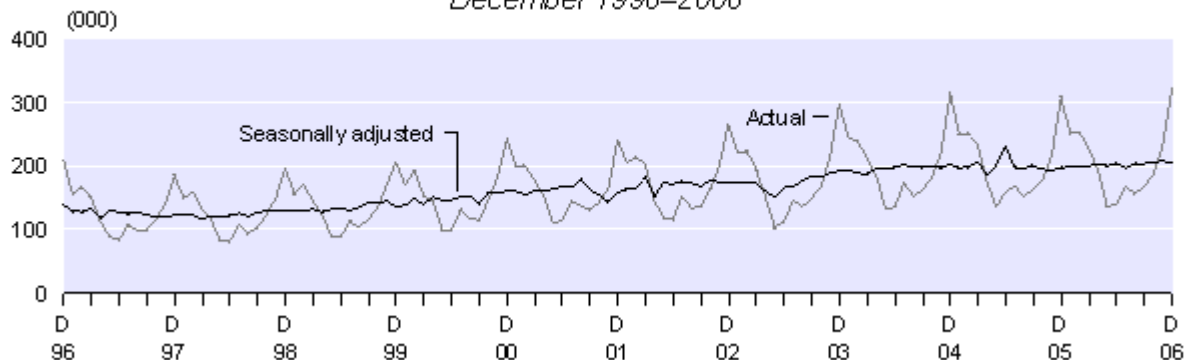
#### Monthly Net Permanent and Long-term Migration

December 2002–2006



#### Monthly Visitor Arrivals

December 1996–2006



Brian Pink  
Government Statistician

2 February 2007  
Cat 33.900 Set 06/07 – 110

There is a companion Media Release published – [External Migration: December 2006](#).

# Commentary

## Visitor arrivals

There were 319,000 short-term overseas visitor arrivals to New Zealand in December 2006, an increase of 12,000 (4 percent) on December 2005. This is the highest monthly total ever recorded, surpassing the 313,100 visitor arrivals in December 2004.

Seasonally adjusted visitor arrivals decreased by 1 percent between November and December 2006. This follows a 1 percent increase between October and November 2006.

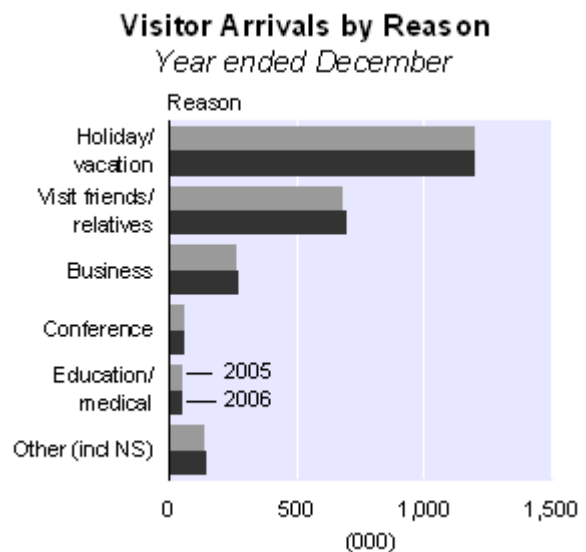
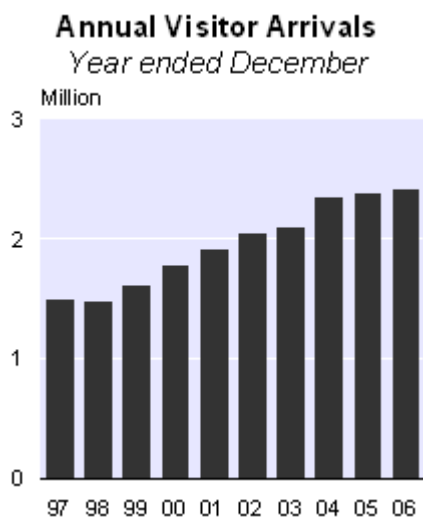
The number of intended stay days for all visitor arrivals in December 2006 was 7.25 million, up 6 percent on the previous December, when there were 6.81 million stay days. The average length of stay was 23 days in December 2006, one day more than the previous December.

There were 735,600 visitor arrivals for the quarter ended December 2006, an increase of 37,600 (5 percent) on the 698,000 visitors who arrived in the quarter ended December 2005.

During the year ended December 2006, there were 2.422 million visitor arrivals, up 38,600 (2 percent) on the December 2005 year. Half of these visitors were on holiday (1,195,500), 29 percent (690,200) were visiting friends and relatives (VFR), 11 percent (270,100) were on business, 2 percent (57,700) came for a conference, and a further 2 percent (51,300) came for education or medical reasons.

Compared with the December 2005 year, there were increases in VFR arrivals (up 16,600 or 2 percent), business arrivals (up 10,900 or 4 percent), holiday arrivals (up 3,500 or less than 1 percent) and education and medical arrivals (up 3,200 or 7 percent). Arrivals for conferences and conventions were down by 1,600 (3 percent).

**Note:** Provisional international travel statistics, including weekly and four-weekly visitor arrival data, are available on the Statistics New Zealand website: [www.stats.govt.nz](http://www.stats.govt.nz). This data is updated each week with the most recently available information on visitor arrivals from 10 major source countries.



## Visitors by source country

Visitor arrivals from Australia increased by 4,900 (4 percent) in December 2006, compared with December 2005. Visitor arrivals also increased from the United Kingdom (up 2,400 or 6 percent) and China (up 1,000 or 9 percent) in December 2006.

There were 12,600 visitor arrivals from Japan in December 2006, down 1,800 or 13 percent from the 14,500 arrivals in December 2005. This is the 18th consecutive month of declining arrivals from Japan (when each month is compared with the same month of the previous year).



In the year ended December 2006, there were more visitors from the Americas (up 7 percent) and Oceania (up 4 percent), compared with the December 2005 year. Asia and Europe (both down 1 percent) provided fewer visitors.

The countries providing the largest increases in visitor arrivals in the December 2006 year were Australia (up 28,800 or 3 percent), China (up 17,900 or 20 percent) and the United States (up 11,100 or 5 percent).

In the December 2006 year, there were 136,400 visitors from Japan, down 18,500 (12 percent) from the 154,900 arrivals from Japan in the December 2005 year. This is the lowest December year total since 1993, when 135,900 visitors arrived from Japan. The peak was in the December 2002 year, when there were 173,600 arrivals.

Visitors from the United Kingdom were down by 12,000 (4 percent) from the year ended December 2005. However, this decrease is due to the large number of visitors from the United Kingdom who arrived as supporters of the British and Lions Rugby Tour of New Zealand in June and July 2005.

**Note:** Detailed visitor data is available in the December 2006 edition of the Statistics NZ publication *International Visitor Arrivals to New Zealand*, which can be ordered via the Statistics NZ website: [www.stats.govt.nz](http://www.stats.govt.nz).

## New Zealand resident departures

New Zealand residents departed on 190,500 short-term overseas trips in December 2006, an increase of 2,000 (1 percent) on December 2005.

In December 2006, there were 2,100 more departures to India, representing a 71 percent increase over the same month of the previous year. Departures by New Zealand residents born in India (up 1,200 or 62 percent) accounted for the majority of the increase. Visiting friends and relatives (up 1,600 or 80 percent) was the intended purpose for 70 percent of departures to India in December 2006.

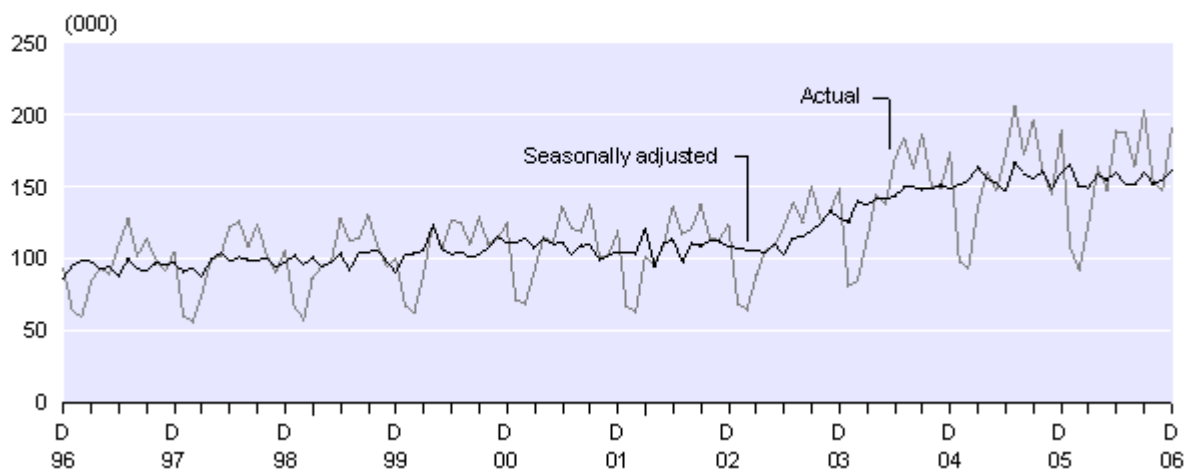
New Zealand residents also went on more trips to Samoa (up 1,200 or 29 percent) and Australia (up 1,000 or 1 percent) in December 2006. However, there were fewer trips to Fiji (down 2,300 or 28 percent) following the political coup on 5 December 2006.

On a seasonally adjusted basis, New Zealand resident departures increased by 4 percent between November and December 2006. This follows a 1 percent increase between October and November 2006.

Compared with December 2005, the number of intended days away for resident departures was up 1 percent to 4.53 million days in December 2006. The average intended length of absence was 24 days, unchanged from the previous December.

### Monthly New Zealand Resident Short-term Departures

*December 1996–2006*



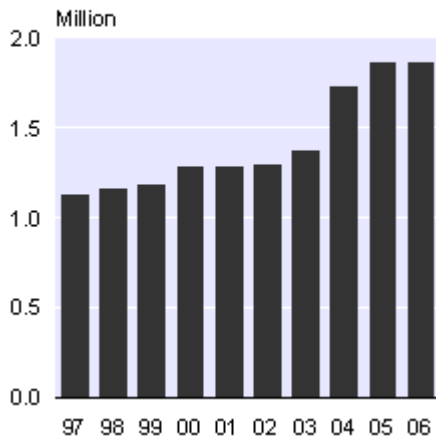
There were 490,500 resident departures in the December 2006 quarter, a decrease of 3,500 (1 percent) from the 494,000 departures in the December 2005 quarter.

In the year ended December 2006, there were 1.864 million resident departures, down 8,000 (less than 1 percent) on the December 2005 year. There were more trips to Samoa (up 5,400 or 21 percent), Tonga (up 3,400 or 29 percent), Thailand (up 3,200 or 12 percent) and the United Kingdom (up 3,000 or 3 percent).

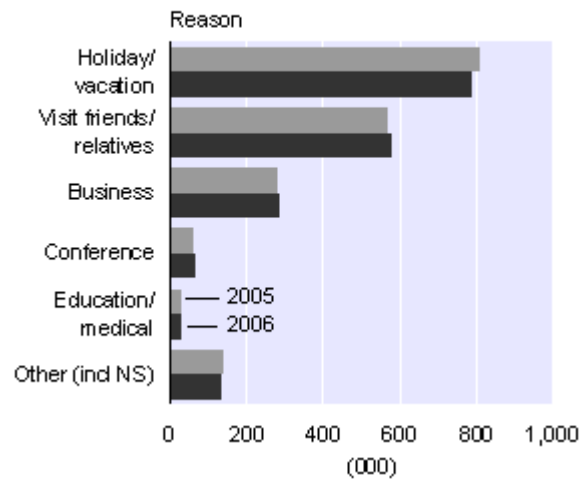
Trips to Australia were down 11,800 (1 percent), compared with the December 2005 year. There were also fewer departures to the United States (down 3,800 or 4 percent) and Fiji (down 2,800 or 3 percent).

There were increases in VFR (up 10,600 or 2 percent), business (up 5,700 or 2 percent) and conference (up 2,200 or 4 percent) departures in the December 2006 year. Trips for education or medical reasons remained steady. Holiday departures decreased by 20,600 (3 percent), compared with the December 2005 year.

**Annual Resident Departures**  
Year ended December



**Resident Departures by Reason**  
Year ended December



**Note:** Provisional international travel statistics, including weekly and four-weekly resident departure data, are available on the Statistics NZ website: [www.stats.govt.nz](http://www.stats.govt.nz). This data is updated each week with the most recently available information on resident departures to 10 major destination countries.

## Permanent and long-term migration

### Definition

Permanent and long-term (PLT) arrivals include people who arrive in New Zealand intending to stay for a period of 12 months or more (or permanently), plus New Zealand residents returning after an absence of 12 months or more. Included in the former group are people with New Zealand residency, as well as students and holders of work permits. PLT departures include New Zealand residents departing for an intended period of 12 months or more (or permanently), plus overseas visitors departing New Zealand after a stay of 12 months or more.

### Country by citizenship table

Please note that the table containing data on PLT migration by country of citizenship has become Table 11 of the tables that accompany this release. This has allowed data to be included for an extended historical period.

### Analysis

PLT arrivals exceeded departures by 1,000 in December 2006, compared with 1,100 more arrivals than departures in December 2005. The smaller excess of arrivals resulted from 100 more non-New Zealand citizen arrivals, 300 fewer New Zealand citizen arrivals, 200 fewer non-New Zealand citizen departures and 100 more New Zealand citizen departures.

In December 2006, there was a net outflow of 1,700 PLT migrants to Australia, up on 1,500 in December 2005. There was a net inflow of 1,500 PLT migrants from the United Kingdom in December 2006, down from 1,800 the previous December.

The seasonally adjusted series recorded a net PLT inflow of 1,200 in December 2006, compared with 1,800 in November 2006.

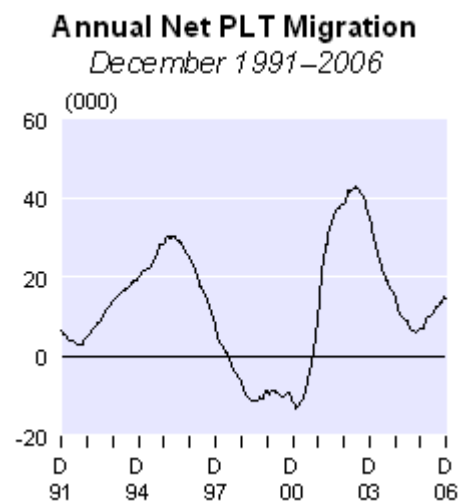
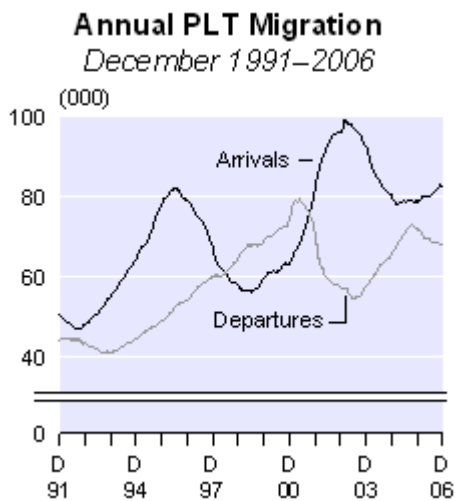
In the year ended December 2006, there were 82,700 PLT arrivals, up 3,800 (5 percent) on the December 2005 year. Over the same period, PLT departures decreased by 3,900 (5 percent) to reach 68,100. As a result, net PLT migration increased to 14,600 in the December 2006 year, from 7,000 in the December 2005 year.

In the December 2006 year, non-New Zealand citizen arrivals were up 3,900, non-New Zealand citizen departures were down 2,300 and New Zealand citizen departures were down 1,600. There was little change in New Zealand citizen arrivals. Changes in non-New Zealand citizen departures are often related to changes in non-New Zealand citizen arrivals a few years earlier. Similarly, changes in New Zealand citizen arrivals are often related to changes in New Zealand citizen departures a few years earlier.

In the year ended December 2006, there were net PLT inflows from the United Kingdom (10,900), the Philippines (2,400), Fiji (2,300) and India (2,100). The net inflow from the Philippines is up on a net migration gain of 700 during the year ended December 2005. The highest net PLT migration gain from the Philippines recorded in the previous 25 years was 1,000 in the December 2002 year.

The net PLT outflow to Australia was 20,700 in the December 2006 year, compared with 21,400 in the December 2005 year.

Major changes in PLT flows have been experienced during the last 15 years. Annual PLT arrivals peaked in the July 1996 year (82,000) and the February 2003 year (98,700), and were lowest in the August 1992 year (47,200). Annual PLT departures peaked in the May 2001 year (79,300) and the October 2005 year (73,000), and were lowest in the December 1993 year (41,100).



As a result of the variation in PLT arrivals and departures, annual net PLT migration has fluctuated significantly. Over the last 15 years, annual net PLT migration has ranged between a net outflow of 13,200 in the February 2001 year and a net inflow of 42,500 in the May 2003 year. Annual net PLT migration inflows have been experienced for most of the last 15 years, with annual net PLT migration outflows only experienced during 1998–2001.

### **Split PLT data**

Statistics NZ began separately identifying permanent arrivals from long-term arrivals in July 2003 (departing migrants are also separately identified). Within the long-term group, a further distinction is made between overseas visitors coming to stay in New Zealand for 12 months or more (long-term overseas visitors) and New Zealand residents returning after an overseas stay of 12 months or more (long-term New Zealand residents).

The classification of a person as a permanent or long-term migrant depends on that person's responses to the questions on the arrival and departure cards. Both cards require completion of one of two sections, depending on whether or not the person feels that they live or have lived in New Zealand. The choice of which section to complete is up to the individual, and the answer may result in a person being misclassified – usually as a permanent migrant instead of a long-term migrant.

Of the 7,500 PLT arrivals in December 2006, there were 3,100 permanent migrants and 1,800 long-term visitors. A further 2,600 arrivals were returning long-term New Zealand residents.

For more information on the separate identification of PLT migrants, including data quality issues, see the [External Migration: September 2003 Hot Off The Press](#).

For technical information contact:  
Ian Richards or Nicholas Thomson  
Christchurch 03 964 8700  
Email: [demography@stats.govt.nz](mailto:demography@stats.govt.nz)

## Technical notes

### Nature of data

The statistics in this release are based on final external migration counts for the month of December 2006. They relate to the number of movements of travellers, rather than to the number of travellers – that is, the multiple movements of individual people during a given reference period are each counted separately.

### Data for country groupings

As of December 2000, the country groupings used in this release are consistent with the New Zealand Standard Classification of Countries 1999 (NZSCC 1999). Prior to this date, country groupings were based on the NZSCC 1995. The following changes have resulted:

1. The Americas region (which includes Northern America, Central America, the Caribbean and South America) replaces Northern America. As a result, countries in Central and South America and the Caribbean are no longer included in the 'Other' category in Tables 6–10.
2. Minor revisions have been made to some other regions.

### New Zealand resident short-term departures

The commentaries relating to New Zealand resident short-term departures are based on the data for the country of main destination – that is, the country where each departing person intended to spend most of his or her time while away from New Zealand.

### Changes in migrant category

In the preparation of migration statistics, the classification of each passenger is primarily determined by the passenger's response, on the arrival or departure card, to the question on intended or actual length of stay/absence. If the person's intention changes later during the trip, then they may also change their migrant category. For example, if a person comes to New Zealand with the declared intention of settling permanently, but in fact returns overseas after a few months, then that person is classified as a permanent and long-term (PLT) migrant on arrival, but is later classified as a short-term visitor on departure. This is known as migration category jumping. Data users should recognise the limitations inherent in the information supplied by travellers.

### Sampling accuracy

The statistics for short-term passenger movements by country (ie arrivals by country of last permanent residence and departures by country of main destination) are derived from a systematic random sample taken each month from arrival and departure cards, and are therefore subject to sampling errors. However, total counts for short-term arrivals and departures of overseas visitors and New Zealand residents are actual counts, which are not subject to sampling errors. Figures for PLT arrivals and departures are also actual counts and have no sampling errors.

## **INFOS database**

All series in Tables 1–5 are available through the INFOS database, using the series identifiers shown. The series in Tables 1, 2 and 3 are available back to January 1960 and the seasonally adjusted series in Tables 4 and 5 are available back to January 1982. The seasonally adjusted migration series were all revised when new seasonal adjustment procedures were introduced in August 1998. Likewise, the seasonally adjusted figures, from January 1996 onwards, are now updated monthly.

## **Seasonally adjusted series**

The purpose of seasonally adjusting a time series is to measure and remove the varying seasonal components (caused by regular events such as holidays) in the series. This makes the data for adjacent months more comparable. The X-12-ARIMA computer program is now used to produce the seasonally adjusted estimates of migration. In addition, the seasonally adjusted figures are subject to revision each month. The size of these revisions is expected to be minimal, with the largest revisions occurring in the months immediately prior to the current month.

The change to a four-term school year in 1996 resulted in changes to the seasonal patterns of the New Zealand resident arrivals and departures series. As a result, the seasonal adjustment for the two series was unsatisfactory. To overcome this, a two-stage procedure was introduced in August 1998. The series prior to 1996 were seasonally adjusted separately and the values fixed, while the series from January 1996 onwards are now seasonally adjusted each month and revised if appropriate. Further information on the seasonally adjusted migration series, including information on the revision procedures, can be obtained from the Statistical Methods Business Unit, Statistics New Zealand, Christchurch, phone 03 964 8700, fax 03 964 8791.

## **New migration processing system**

To capture survey information more efficiently, Statistics NZ is developing new processing systems that incorporate scanning and image recognition technology. A new migration processing system using this technology was first used to process the arrival and departure cards for June 2004. A key difference between the new and previous systems is that there is now no need to manually enter the passport number for each traveller. In addition, classing (as overseas visitors, New Zealand residents or PLT migrants) and capture of the information required for the migration sample are done automatically for the majority of the cards. Those cards that cannot be classed (or are classed as PLT) and those with fields that cannot be recognised are manually processed using the card image. It is expected that operator intervention should only be required for approximately one-tenth of the cards. The new system, designed to capture the same information as previously captured, is used only for the production of statistics.

It is expected that data captured using the new system will be largely consistent with previous data. Users need to be aware of the changes to the processing system when comparing data for June 2004 onwards with data for earlier periods.

## **More information**

For more information, follow the [link](#) from the Technical notes of this release on the Statistics NZ website.

## Copyright

Information obtained from Statistics NZ may be freely used, reproduced, or quoted unless otherwise specified. In all cases Statistics NZ must be acknowledged as the source.

## Liability

While care has been used in processing, analysing and extracting information, Statistics NZ gives no warranty that the information supplied is free from error. Statistics NZ shall not be liable for any loss suffered through the use, directly or indirectly, of any information, product or service.

## Timing

Timed statistical releases are delivered using postal and electronic services provided by third parties. Delivery of these releases may be delayed by circumstances outside the control of Statistics NZ. Statistics NZ accepts no responsibility for any such delays.

### **Next release ...**

*External Migration: December 2006 year will be released on 20 February 2007.*

Statistics New Zealand: The first source of independent information for your key decisions.

## Tables

The following tables can be downloaded from the Statistics New Zealand website in Excel 97 format. If you do not have access to Excel 97 or higher, you may use the [Excel file viewer](#) to view, print and export the contents of the file.

### List of tables

1. Arrivals by class, December 1996–2006
2. Departures by class, December 1996–2006
3. Net migration, December 1996–2006
4. Arrivals, seasonally adjusted, December 2005–2006
5. Departures, seasonally adjusted, December 2005–2006
6. Overseas visitor arrivals, by country of last permanent residence
7. New Zealand resident short-term departures, by country of main destination
8. Permanent and long-term arrivals, by country of last permanent residence
9. Permanent and long-term departures, by country of next permanent residence
10. Net permanent and long-term migration, by country of last/next permanent residence
11. Permanent and long-term migration, by country of citizenship

Table 1

**Arrivals by Class**  
December 1996–2006

Period	Short-term arrivals		Permanent and long-term arrivals <sup>(3)</sup>	All arrivals
	Overseas visitors <sup>(1)</sup>	NZ residents <sup>(2)</sup>		
<i>Series ref: EMI</i>	<i>S1AAA</i>	<i>S1ACA</i>	<i>S1AE</i>	<i>S1AZA</i>
<b>Month of December</b>				
1996	208,460	54,130	7,420	270,000
1997	183,830	59,270	5,860	248,960
1998	195,260	59,540	5,640	260,440
1999	205,390	68,100	6,530	280,020
2000	243,020	74,480	6,460	323,960
2001	239,810	69,370	8,720	317,910
2002	265,690	72,140	8,600	346,430
2003	297,280	87,670	7,840	392,790
2004	313,060	100,720	7,440	421,220
2005	307,060	103,830	7,660	418,550
2006	319,040	103,070	7,470	429,580
<b>Year ended December</b>				
1996	1,528,720	1,081,930	79,000	2,689,660
1997	1,497,220	1,115,120	67,640	2,679,980
1998	1,484,740	1,176,740	58,220	2,719,690
1999	1,607,480	1,209,680	59,740	2,876,900
2000	1,789,080	1,269,540	62,990	3,121,610
2001	1,909,810	1,302,810	81,090	3,293,710
2002	2,044,960	1,303,460	95,950	3,444,370
2003	2,106,230	1,381,900	92,660	3,580,790
2004	2,347,670	1,738,730	80,480	4,166,880
2005	2,382,950	1,879,760	78,960	4,341,670
2006	2,421,560	1,877,290	82,730	4,381,580

(1) Intended length of stay in New Zealand is less than 12 months.

(2) Actual length of absence from New Zealand was less than 12 months.

(3) Permanent and long-term arrivals include overseas migrants who arrive in New Zealand intending to stay for a period of 12 months or more (or permanently), plus New Zealand residents returning after an absence of 12 months or more.

**Note:** Data is independently rounded to the nearest 10.

Table 2

**Departures by Class**  
December 1996–2006

Period	Short-term departures		Permanent and long-term departures <sup>(3)</sup>	All departures
	Overseas visitors <sup>(1)</sup>	NZ residents <sup>(2)</sup>		
<i>Series ref: EMI</i>	S2AAA	S2ACA	S2AE	S2AZA
<b>Month of December</b>				
1996	143,320	92,720	4,820	240,860
1997	125,970	104,030	5,290	235,290
1998	136,630	105,350	5,880	247,860
1999	144,040	98,800	6,290	249,130
2000	167,520	123,990	7,900	299,410
2001	165,850	118,120	5,320	289,290
2002	188,540	123,570	5,190	317,300
2003	210,860	147,880	6,290	365,030
2004	211,030	173,680	7,110	391,820
2005	209,820	188,430	6,520	404,770
2006	219,990	190,470	6,480	416,930
<b>Year ended December</b>				
1996	1,499,430	1,092,880	54,210	2,646,520
1997	1,493,590	1,132,200	60,010	2,685,800
1998	1,489,200	1,166,720	64,480	2,720,400
1999	1,600,320	1,184,920	68,770	2,854,010
2000	1,779,060	1,283,440	74,310	3,136,800
2001	1,901,700	1,287,300	71,370	3,260,360
2002	2,024,520	1,293,940	57,750	3,376,210
2003	2,102,790	1,374,410	57,750	3,534,960
2004	2,359,690	1,733,210	65,370	4,158,270
2005	2,402,250	1,871,800	71,990	4,346,040
2006	2,418,950	1,863,780	68,120	4,350,860

(1) Actual length of stay in New Zealand was less than 12 months.

(2) Intended length of absence from New Zealand is less than 12 months.

(3) Permanent and long-term departures include New Zealand residents departing for an intended period of 12 months or more (or permanently), plus overseas visitors departing New Zealand after a stay of 12 months or more.

**Note:** Data is independently rounded to the nearest 10.

Table 3

**Net Migration**  
December 1996–2006

Period	Net gain or loss from total migration	Net gain or loss from permanent and long-term migration <sup>(1)</sup>
<i>Series ref: EMI</i>	S3ZA	S3E
<b>Month of December</b>		
1996	29,140	2,600
1997	13,670	570
1998	12,580	-230
1999	30,890	240
2000	24,550	-1,440
2001	28,610	3,400
2002	29,130	3,420
2003	27,760	1,550
2004	29,400	320
2005	13,780	1,140
2006	12,650	990
<b>Year ended December</b>		
1996	43,130	24,790
1997	-5,820	7,620
1998	-710	-6,260
1999	22,890	-9,030
2000	-15,190	-11,310
2001	33,350	9,730
2002	68,160	38,200
2003	45,830	34,910
2004	8,610	15,110
2005	-4,370	6,970
2006	30,730	14,610

(1) Permanent and long-term arrivals include overseas migrants who arrive in New Zealand intending to stay for a period of 12 months or more (or permanently), plus New Zealand residents returning after an absence of 12 months or more. Permanent and long-term departures include New Zealand residents departing for an intended period of 12 months or more (or permanently), plus overseas visitors departing New Zealand after a stay of 12 months or more.

**Note:**

- (a) Data is independently rounded to the nearest 10.
- (b) Net gain or loss from migration is calculated by subtracting departures from arrivals.
- (c) A minus sign indicates an excess of departures over arrivals.

Table 4

**Arrivals, Seasonally Adjusted <sup>(1)</sup>**  
*December 2005–2006*

Month	Short-term arrivals		Permanent and long-term arrivals <sup>(4)</sup>	All arrivals
	Overseas visitors <sup>(2)</sup>	NZ residents <sup>(3)</sup>		
<i>Series ref: EMI</i>	<i>S12AS</i>	<i>S12CS</i>	<i>S12ES</i>	<i>S12ZS</i>
2005 Dec	196,890	157,090	6,840	360,820
2006 Jan	197,230	158,930	6,280	362,430
Feb	199,940	163,250	6,870	370,060
Mar	199,470	144,880	7,120	351,470
Apr	202,870	160,070	6,700	369,650
May	199,910	155,120	6,800	361,830
Jun	203,270	155,480	6,990	365,740
Jul	196,070	159,290	7,020	362,380
Aug	202,910	149,080	7,050	359,040
Sep	202,720	154,230	7,230	364,190
Oct	205,880	160,790	7,140	373,820
Nov	206,980	157,890	7,150	372,020
Dec	204,310	155,990	6,660	366,960

(1) All data has been revised (refer to Technical notes of this release).

(2) Intended length of stay in New Zealand is less than 12 months.

(3) Actual length of absence from New Zealand was less than 12 months.

(4) Permanent and long-term arrivals include overseas migrants who arrive in New Zealand intending to stay for a period of 12 months or more (or permanently), plus New Zealand residents returning after an absence of 12 months or more.

**Note:** Data is independently rounded to the nearest 10.

Table 5

**Departures, Seasonally Adjusted <sup>(1)</sup>**  
*December 2005–2006*

Month	Short-term departures		Permanent and long-term departures <sup>(4)</sup>	All departures
	Overseas visitors <sup>(2)</sup>	NZ residents <sup>(3)</sup>		
<i>Series ref: EMI</i>	<i>S22AS</i>	<i>S22CS</i>	<i>S22ES</i>	<i>S22ZS</i>
2005 Dec	196,880	159,680	5,530	362,090
2006 Jan	195,420	164,380	5,680	365,480
Feb	199,760	149,860	5,470	355,080
Mar	204,810	149,050	5,410	359,280
Apr	203,440	157,780	5,770	366,990
May	202,240	154,660	5,910	362,810
Jun	198,430	159,740	5,750	363,920
Jul	195,470	150,650	5,620	351,740
Aug	201,260	151,590	5,920	358,760
Sep	200,490	159,270	5,950	365,700
Oct	206,230	151,780	5,950	363,970
Nov	205,910	154,030	5,330	365,270
Dec	207,310	160,110	5,500	372,930

(1) All data has been revised (refer to Technical notes of this release).

(2) Actual length of stay in New Zealand was less than 12 months.

(3) Intended length of absence from New Zealand is less than 12 months.

(4) Permanent and long-term departures include New Zealand residents departing for an intended period of 12 months or more (or permanently), plus overseas visitors departing New Zealand after a stay of 12 months or more.

**Note:** Data is independently rounded to the nearest 10.

Table 6

**Overseas Visitor Arrivals<sup>(1)</sup>**  
*By country of last permanent residence*

Country of last permanent residence	Month of December		December quarter		Year ended December		Percentage change from 2005 <sup>(2)</sup>		
	2005	2006	2005	2006	2005	2006	Month	Quarter	Year
<b>Oceania</b>	<b>133,450</b>	<b>139,854</b>	<b>278,649</b>	<b>301,026</b>	<b>985,179</b>	<b>1,023,367</b>	<b>4.8</b>	<b>8.0</b>	<b>3.9</b>
Australia	116,250	121,160	243,854	263,302	874,738	903,504	4.2	8.0	3.3
Cook Islands	1,325	1,274	3,280	3,320	10,274	10,457	-3.8	1.2	1.8
Fiji	3,425	3,718	6,415	7,106	20,509	22,580	8.6	10.8	10.1
French Polynesia	2,850	2,470	5,587	4,956	17,503	17,290	-13.3	-11.3	-1.2
New Caledonia	1,325	1,404	2,682	3,054	10,613	11,244	6.0	13.9	5.9
Samoa	3,150	3,146	5,933	6,028	16,369	17,277	-0.1	1.6	5.5
Tonga	1,500	2,002	3,294	3,960	10,047	11,775	33.5	20.2	17.2
<b>Asia</b>	<b>57,925</b>	<b>57,226</b>	<b>154,065</b>	<b>153,014</b>	<b>519,560</b>	<b>512,084</b>	<b>-1.2</b>	<b>-0.7</b>	<b>-1.4</b>
China, PR	11,775	12,792	29,876	34,748	87,850	105,716	8.6	16.3	20.3
Hong Kong (SAR)	3,225	3,016	7,112	6,426	26,289	23,570	-6.5	-9.6	-10.3
India	2,275	2,184	5,495	5,550	17,761	20,265	-4.0	1.0	14.1
Indonesia	1,450	1,326	3,129	2,976	7,213	6,929	-8.6	-4.9	-3.9
Japan	14,475	12,636	43,156	38,266	154,925	136,401	-12.7	-11.3	-12.0
Korea, Republic of	10,725	11,440	30,091	32,208	112,005	111,361	6.7	7.0	-0.6
Malaysia	2,650	2,444	7,848	6,580	23,671	19,990	-7.8	-16.2	-15.6
Philippines	650	780	1,708	2,144	6,028	7,059	20.0	25.5	17.1
Singapore	5,825	5,304	11,782	10,650	29,735	28,168	-8.9	-9.6	-5.3
Taiwan	2,450	2,418	7,556	6,796	28,455	27,825	-1.3	-10.1	-2.2
Thailand	1,475	1,612	4,350	4,384	19,122	18,032	9.3	0.8	-5.7
<b>Europe</b>	<b>72,475</b>	<b>76,310</b>	<b>161,600</b>	<b>172,230</b>	<b>513,257</b>	<b>508,753</b>	<b>5.3</b>	<b>6.6</b>	<b>-0.9</b>
Austria	925	780	2,098	2,232	6,411	6,217	-15.7	6.4	-3.0
Belgium	650	650	1,708	1,882	4,451	4,652	0.0	10.2	4.5
Czech Republic	350	364	1,293	1,508	3,163	3,436	4.0	16.6	8.6
Denmark	1,550	1,742	3,252	3,722	9,510	10,522	12.4	14.5	10.6
Finland	425	442	1,046	1,190	2,842	3,008	4.0	13.8	5.8
France	2,525	2,470	5,883	6,232	16,977	18,663	-2.2	5.9	9.9
Germany	7,525	7,852	20,198	20,744	57,549	59,353	4.3	2.7	3.1
Ireland	2,550	2,548	5,793	6,024	21,431	19,583	-0.1	4.0	-8.6
Italy	1,100	1,040	2,480	2,800	7,472	8,010	-5.5	12.9	7.2
Netherlands	4,575	5,096	10,578	11,256	26,122	27,476	11.4	6.4	5.2
Norway	525	520	1,169	1,180	3,925	3,896	-1.0	0.9	-0.7
Spain	675	910	2,469	3,044	6,952	8,064	34.8	23.3	16.0
Sweden	2,050	2,054	4,603	4,364	12,520	12,026	0.2	-5.2	-3.9
Switzerland	2,275	2,470	5,173	5,506	14,270	14,536	8.6	6.4	1.9
United Kingdom	43,050	45,448	89,372	94,860	306,815	294,812	5.6	6.1	-3.9
<b>Americas</b>	<b>32,600</b>	<b>34,034</b>	<b>80,785</b>	<b>85,030</b>	<b>276,214</b>	<b>295,176</b>	<b>4.4</b>	<b>5.3</b>	<b>6.9</b>
Argentina	600	702	1,060	1,340	3,161	4,053	17.0	26.4	28.2
Brazil	1,075	1,248	2,248	2,546	7,365	8,901	16.1	13.3	20.9
Canada	5,275	5,694	12,750	14,428	42,182	45,955	7.9	13.2	8.9
Chile	350	468	902	1,326	2,872	4,015	33.7	47.0	39.8
United States of America	24,550	25,064	62,132	63,476	214,507	225,629	2.1	2.2	5.2
<b>Other<sup>(3)</sup></b>	<b>9,225</b>	<b>10,192</b>	<b>20,288</b>	<b>21,192</b>	<b>71,319</b>	<b>69,508</b>	<b>10.5</b>	<b>4.5</b>	<b>-2.5</b>
Israel	850	780	2,529	2,100	6,894	5,887	-8.2	-17.0	-14.6
South Africa	3,075	3,380	6,019	6,284	17,072	18,284	9.9	4.4	7.1
United Arab Emirates	525	572	985	1,122	4,331	4,351	9.0	13.9	0.5
<b>Total<sup>(4)</sup></b>	<b>307,061</b>	<b>319,040</b>	<b>697,971</b>	<b>735,592</b>	<b>2,382,950</b>	<b>2,421,561</b>	<b>3.9</b>	<b>5.4</b>	<b>1.6</b>

(1) Intended length of stay in New Zealand is less than 12 months.

(2) Minus sign denotes a decrease.

(3) Includes not stated.

(4) These totals are actual counts and may differ from the sum of individual figures for different countries that are derived from samples.

Table 7

**New Zealand Resident Short-term Departures<sup>(1)</sup>**  
*By country of main destination*

Country of main destination	Month of December		December quarter		Year ended December		Percentage change from 2005 <sup>(2)</sup>		
	2005	2006	2005	2006	2005	2006	Month	Quarter	Year
<b>Oceania</b>	<b>106,604</b>	<b>106,320</b>	<b>299,924</b>	<b>301,814</b>	<b>1,161,274</b>	<b>1,162,752</b>	<b>-0.3</b>	<b>0.6</b>	<b>0.1</b>
Australia	84,999	86,040	243,705	246,746	941,151	929,361	1.2	1.2	-1.3
Cook Islands	3,770	3,600	10,601	11,556	42,519	45,181	-4.5	9.0	6.3
Fiji	8,323	6,030	25,036	20,512	109,006	106,246	-27.6	-18.1	-2.5
French Polynesia	406	420	1,459	1,356	5,589	5,436	3.4	-7.1	-2.7
New Caledonia	319	420	1,372	1,512	5,516	7,050	31.7	10.2	27.8
Norfolk Island	493	570	1,789	1,792	7,092	7,308	15.6	0.2	3.0
Samoa	4,292	5,520	8,072	10,044	25,899	31,327	28.6	24.4	21.0
Tonga	2,378	2,220	3,836	4,092	11,610	15,025	-6.6	6.7	29.4
Vanuatu	812	810	2,243	2,448	7,525	9,204	-0.2	9.1	22.3
<b>Asia</b>	<b>31,291</b>	<b>34,140</b>	<b>79,405</b>	<b>79,666</b>	<b>231,511</b>	<b>235,216</b>	<b>9.1</b>	<b>0.3</b>	<b>1.6</b>
China, PR	7,772	7,770	19,166	18,924	50,406	51,202	0.0	-1.3	1.6
Hong Kong (SAR)	2,668	3,450	6,610	7,116	19,214	18,934	29.3	7.7	-1.5
India	2,987	5,100	10,304	11,574	20,869	23,516	70.7	12.3	12.7
Indonesia	754	1,050	2,212	2,428	13,110	10,843	39.3	9.8	-17.3
Japan	2,088	1,740	4,896	4,678	18,652	17,086	-16.7	-4.5	-8.4
Korea, Republic of	2,639	3,150	5,744	6,166	15,852	14,919	19.4	7.3	-5.9
Malaysia	2,175	2,220	5,415	4,794	17,262	16,823	2.1	-11.5	-2.5
Philippines	1,392	1,830	2,526	2,714	6,432	6,960	31.5	7.4	8.2
Singapore	1,189	1,020	3,862	3,698	14,440	16,712	-14.2	-4.2	15.7
Sri Lanka	783	420	1,350	1,044	3,534	3,052	-46.4	-22.7	-13.6
Taiwan	2,262	1,920	4,800	3,922	12,156	11,320	-15.1	-18.3	-6.9
Thailand	2,465	2,340	7,541	7,462	25,899	29,080	-5.1	-1.0	12.3
Viet Nam	899	870	2,033	1,962	6,051	6,730	-3.2	-3.5	11.2
<b>Europe</b>	<b>12,470</b>	<b>13,350</b>	<b>28,427</b>	<b>28,274</b>	<b>149,713</b>	<b>159,729</b>	<b>7.1</b>	<b>-0.5</b>	<b>6.7</b>
France	638	840	1,340	1,828	10,614	11,648	31.7	36.4	9.7
Germany	783	840	1,971	1,958	8,193	10,403	7.3	-0.7	27.0
Italy	464	600	1,220	1,510	9,077	11,625	29.3	23.8	28.1
United Kingdom	8,062	7,950	17,944	16,634	86,377	89,332	-1.4	-7.3	3.4
<b>Americas</b>	<b>10,324</b>	<b>10,590</b>	<b>26,173</b>	<b>26,268</b>	<b>115,882</b>	<b>115,110</b>	<b>2.6</b>	<b>0.4</b>	<b>-0.7</b>
Canada	1,711	1,500	3,061	2,904	15,791	16,421	-12.3	-5.1	4.0
United States of America	7,453	7,710	20,305	19,722	90,803	87,012	3.4	-2.9	-4.2
<b>Other<sup>(3)</sup></b>	<b>27,202</b>	<b>25,980</b>	<b>59,224</b>	<b>54,138</b>	<b>209,694</b>	<b>188,521</b>	<b>-4.5</b>	<b>-8.6</b>	<b>-10.1</b>
South Africa	2,755	2,850	4,321	4,644	11,897	12,616	3.4	7.5	6.0
United Arab Emirates	493	570	1,114	1,298	3,378	3,904	15.6	16.5	15.6
<b>Total<sup>(4)</sup></b>	<b>188,434</b>	<b>190,466</b>	<b>493,951</b>	<b>490,467</b>	<b>1,871,801</b>	<b>1,863,784</b>	<b>1.1</b>	<b>-0.7</b>	<b>-0.4</b>

(1) New Zealand resident departures for an intended period of less than 12 months.

(2) Minus sign denotes a decrease.

(3) Includes not stated.

(4) These totals are actual counts and may differ from the sum of individual figures for different countries that are derived from samples.

Table 8

**Permanent and Long-term Arrivals<sup>(1)</sup>**  
*By country of last permanent residence*

Country of last permanent residence	Month of December		December quarter		Year ended December		Percentage change from 2005 <sup>(2)</sup>		
	2005	2006	2005	2006	2005	2006	Month	Quarter	Year
<b>Oceania</b>	<b>2,428</b>	<b>2,373</b>	<b>5,166</b>	<b>5,213</b>	<b>19,933</b>	<b>19,499</b>	<b>-2.3</b>	<b>0.9</b>	<b>-2.2</b>
Australia	1,715	1,650	3,595	3,633	13,389	13,306	-3.8	1.1	-0.6
Fiji	268	267	684	637	2,808	2,590	-0.4	-6.9	-7.8
Samoa	205	206	423	394	1,720	1,569	0.5	-6.9	-8.8
Tonga	107	115	205	286	925	921	7.5	39.5	-0.4
<b>Asia</b>	<b>1,123</b>	<b>1,273</b>	<b>3,352</b>	<b>4,249</b>	<b>17,706</b>	<b>20,487</b>	<b>13.4</b>	<b>26.8</b>	<b>15.7</b>
China, PR	197	216	669	817	4,102	4,271	9.6	22.1	4.1
Hong Kong (SAR)	41	37	119	137	569	616	-9.8	15.1	8.3
India	142	138	500	480	2,569	2,743	-2.8	-4.0	6.8
Japan	136	136	612	582	3,471	3,192	0.0	-4.9	-8.0
Korea, Republic of	132	142	325	376	1,769	1,896	7.6	15.7	7.2
Malaysia	66	72	172	225	1,109	1,413	9.1	30.8	27.4
Philippines	118	273	288	893	844	2,533	131.4	210.1	200.1
Singapore	72	62	140	127	557	612	-13.9	-9.3	9.9
Taiwan	44	52	145	143	704	818	18.2	-1.4	16.2
Thailand	42	55	111	204	585	920	31.0	83.8	57.3
<b>Europe</b>	<b>3,021</b>	<b>2,755</b>	<b>8,985</b>	<b>9,079</b>	<b>29,182</b>	<b>30,262</b>	<b>-8.8</b>	<b>1.0</b>	<b>3.7</b>
Czech Republic	11	12	60	133	101	291	9.1	121.7	188.1
France	63	71	232	255	687	799	12.7	9.9	16.3
Germany	126	119	473	547	2,080	2,283	-5.6	15.6	9.8
Ireland	105	115	339	378	1,378	1,227	9.5	11.5	-11.0
Netherlands	71	66	224	244	698	789	-7.0	8.9	13.0
United Kingdom	2,488	2,226	7,062	7,004	22,013	22,695	-10.5	-0.8	3.1
<b>Americas</b>	<b>627</b>	<b>571</b>	<b>1,626</b>	<b>1,665</b>	<b>6,068</b>	<b>6,422</b>	<b>-8.9</b>	<b>2.4</b>	<b>5.8</b>
Canada	138	127	435	442	1,521	1,615	-8.0	1.6	6.2
United States of America	397	323	969	969	3,674	3,636	-18.6	0.0	-1.0
<b>Other<sup>(3)</sup></b>	<b>459</b>	<b>498</b>	<b>1,346</b>	<b>1,360</b>	<b>6,074</b>	<b>6,062</b>	<b>8.5</b>	<b>1.0</b>	<b>-0.2</b>
South Africa	138	206	418	529	1,492	1,850	49.3	26.6	24.0
United Arab Emirates	32	20	63	49	346	249	-37.5	-22.2	-28.0
<b>Total</b>	<b>7,658</b>	<b>7,470</b>	<b>20,475</b>	<b>21,566</b>	<b>78,963</b>	<b>82,732</b>	<b>-2.5</b>	<b>5.3</b>	<b>4.8</b>

(1) Permanent and long-term arrivals include overseas migrants who arrive in New Zealand intending to stay for a period of 12 months or more (or permanently), plus New Zealand residents returning after an absence of 12 months or more.

(2) Minus sign denotes a decrease.

(3) Includes not stated.

Table 9

**Permanent and Long-term Departures<sup>(1)</sup>**  
*By country of next permanent residence*

Country of next permanent residence	Month of December		December quarter		Year ended December		Percentage change from 2005 <sup>(2)</sup>		
	2005	2006	2005	2006	2005	2006	Month	Quarter	Year
<b>Oceania</b>	<b>3,424</b>	<b>3,563</b>	<b>8,523</b>	<b>8,616</b>	<b>36,817</b>	<b>35,790</b>	<b>4.1</b>	<b>1.1</b>	<b>-2.8</b>
Australia	3,188	3,330	8,027	8,176	34,766	34,015	4.5	1.9	-2.2
Fiji	47	34	92	77	409	333	-27.7	-16.3	-18.6
Samoa	46	59	102	120	535	446	28.3	17.6	-16.6
Tonga	37	25	63	50	237	229	-32.4	-20.6	-3.4
<b>Asia</b>	<b>1,385</b>	<b>1,186</b>	<b>2,834</b>	<b>2,419</b>	<b>10,886</b>	<b>9,104</b>	<b>-14.4</b>	<b>-14.6</b>	<b>-16.4</b>
China, PR	280	227	725	586	2,986	2,443	-18.9	-19.2	-18.2
Hong Kong (SAR)	52	50	114	117	482	446	-3.8	2.6	-7.5
India	44	42	156	169	622	618	-4.5	8.3	-0.6
Japan	144	140	352	282	1,826	1,404	-2.8	-19.9	-23.1
Korea, Republic of	598	439	897	644	2,492	1,825	-26.6	-28.2	-26.8
Malaysia	60	55	111	154	446	462	-8.3	38.7	3.6
Philippines	21	15	37	32	127	134	-28.6	-13.5	5.5
Singapore	36	65	73	115	311	383	80.6	57.5	23.2
Taiwan	32	24	89	58	392	326	-25.0	-34.8	-16.8
Thailand	46	62	114	113	394	385	34.8	-0.9	-2.3
<b>Europe</b>	<b>892</b>	<b>995</b>	<b>2,593</b>	<b>2,606</b>	<b>16,399</b>	<b>15,627</b>	<b>11.5</b>	<b>0.5</b>	<b>-4.7</b>
Czech Republic	1	1	8	11	116	77	0.0	37.5	-33.6
France	30	30	74	90	508	448	0.0	21.6	-11.8
Germany	34	52	87	142	653	773	52.9	63.2	18.4
Ireland	35	44	177	125	943	970	25.7	-29.4	2.9
Netherlands	14	12	43	45	255	267	-14.3	4.7	4.7
United Kingdom	691	750	1,969	1,952	12,430	11,760	8.5	-0.9	-5.4
<b>Americas</b>	<b>532</b>	<b>432</b>	<b>1,147</b>	<b>1,144</b>	<b>4,947</b>	<b>4,758</b>	<b>-18.8</b>	<b>-0.3</b>	<b>-3.8</b>
Canada	159	129	386	356	1,485	1,440	-18.9	-7.8	-3.0
United States of America	305	240	626	611	2,800	2,596	-21.3	-2.4	-7.3
<b>Other<sup>(3)</sup></b>	<b>286</b>	<b>303</b>	<b>714</b>	<b>708</b>	<b>2,943</b>	<b>2,844</b>	<b>5.9</b>	<b>-0.8</b>	<b>-3.4</b>
South Africa	40	38	100	98	331	380	-5.0	-2.0	14.8
United Arab Emirates	26	62	64	112	300	456	138.5	75.0	52.0
<b>Total</b>	<b>6,519</b>	<b>6,479</b>	<b>15,811</b>	<b>15,493</b>	<b>71,992</b>	<b>68,123</b>	<b>-0.6</b>	<b>-2.0</b>	<b>-5.4</b>

(1) Permanent and long-term departures include New Zealand residents departing for an intended period of 12 months or more (or permanently), plus overseas visitors departing New Zealand after a stay of 12 months or more.

(2) Minus sign denotes a decrease.

(3) Includes not stated.

Table 10

**Net Permanent and Long-term Migration<sup>(1)</sup>**  
*By country of last/next permanent residence*

Country of last/next permanent residence	Month of December <sup>(2)</sup>		December quarter <sup>(2)</sup>		Year ended December <sup>(2)</sup>		Change from 2005 <sup>(3)</sup>		
	2005	2006	2005	2006	2005	2006	Month	Quarter	Year
<b>Oceania</b>	<b>-996</b>	<b>-1,190</b>	<b>-3,357</b>	<b>-3,403</b>	<b>-16,884</b>	<b>-16,291</b>	<b>-194</b>	<b>-46</b>	<b>593</b>
Australia	-1,473	-1,680	-4,432	-4,543	-21,377	-20,709	-207	-111	668
Fiji	221	233	592	560	2,399	2,257	12	-32	-142
Samoa	159	147	321	274	1,185	1,123	-12	-47	-62
Tonga	70	90	142	236	688	692	20	94	4
<b>Asia</b>	<b>-262</b>	<b>87</b>	<b>518</b>	<b>1,830</b>	<b>6,820</b>	<b>11,383</b>	<b>349</b>	<b>1,312</b>	<b>4,563</b>
China, PR	-83	-11	-56	231	1,116	1,828	72	287	712
Hong Kong (SAR)	-11	-13	5	20	87	170	-2	15	83
India	98	96	344	311	1,947	2,125	-2	-33	178
Japan	-8	-4	260	300	1,645	1,788	4	40	143
Korea, Republic of	-466	-297	-572	-268	-723	71	169	304	794
Malaysia	6	17	61	71	663	951	11	10	288
Philippines	97	258	251	861	717	2,399	161	610	1,682
Singapore	36	-3	67	12	246	229	-39	-55	-17
Taiwan	12	28	56	85	312	492	16	29	180
Thailand	-4	-7	-3	91	191	535	-3	94	344
<b>Europe</b>	<b>2,129</b>	<b>1,760</b>	<b>6,392</b>	<b>6,473</b>	<b>12,783</b>	<b>14,635</b>	<b>-369</b>	<b>81</b>	<b>1,852</b>
Czech Republic	10	11	52	122	-15	214	1	70	229
France	33	41	158	165	179	351	8	7	172
Germany	92	67	386	405	1,427	1,510	-25	19	83
Ireland	70	71	162	253	435	257	1	91	-178
Netherlands	57	54	181	199	443	522	-3	18	79
United Kingdom	1,797	1,476	5,093	5,052	9,583	10,935	-321	-41	1,352
<b>Americas</b>	<b>95</b>	<b>139</b>	<b>479</b>	<b>521</b>	<b>1,121</b>	<b>1,664</b>	<b>44</b>	<b>42</b>	<b>543</b>
Canada	-21	-2	49	86	36	175	19	37	139
United States of America	92	83	343	358	874	1,040	-9	15	166
<b>Other<sup>(4)</sup></b>	<b>173</b>	<b>195</b>	<b>632</b>	<b>652</b>	<b>3,131</b>	<b>3,218</b>	<b>22</b>	<b>20</b>	<b>87</b>
South Africa	98	168	318	431	1,161	1,470	70	113	309
United Arab Emirates	6	-42	-1	-63	46	-207	-48	-62	-253
<b>Total</b>	<b>1,139</b>	<b>991</b>	<b>4,664</b>	<b>6,073</b>	<b>6,971</b>	<b>14,609</b>	<b>-148</b>	<b>1,409</b>	<b>7,638</b>

(1) Net permanent and long-term migration is derived by subtracting permanent and long-term departures from permanent and long-term arrivals. Permanent and long-term arrivals include overseas migrants who arrive in New Zealand intending to stay for a period of 12 months or more (or permanently), plus New Zealand residents returning after an absence of 12 months or more. Permanent and long-term departures include New Zealand residents departing for an intended period of 12 months or more (or permanently), plus overseas visitors departing New Zealand after a stay of 12 months or more.

(2) Minus sign indicates an excess of departures over arrivals.

(3) Minus sign denotes a decrease.

(4) Includes not stated.

Table 11

**Permanent and Long-term Migration**  
*By country of citizenship*

Period	Country of citizenship								
	New Zealand			Non-New Zealand			Total		
	Arrivals <sup>(1)</sup>	Departures <sup>(2)</sup>	Net <sup>(3)</sup>	Arrivals <sup>(1)</sup>	Departures <sup>(2)</sup>	Net <sup>(3)</sup>	Arrivals <sup>(1)</sup>	Departures <sup>(2)</sup>	Net <sup>(3)</sup>
<b>Month of December</b>									
1996	3,584	3,066	518	3,836	1,759	2,077	7,420	4,825	2,595
1997	3,448	3,223	225	2,414	2,067	347	5,862	5,290	572
1998	3,156	3,942	-786	2,487	1,934	553	5,643	5,876	-233
1999	3,889	4,403	-514	2,640	1,891	749	6,529	6,294	235
2000	3,464	5,880	-2,416	2,998	2,020	978	6,462	7,900	-1,438
2001	4,062	3,448	614	4,663	1,873	2,790	8,725	5,321	3,404
2002	4,187	3,016	1,171	4,418	2,172	2,246	8,605	5,188	3,417
2003	4,183	3,447	736	3,656	2,841	815	7,839	6,288	1,551
2004	3,823	3,909	-86	3,613	3,202	411	7,436	7,111	325
2005	3,777	3,809	-32	3,881	2,710	1,171	7,658	6,519	1,139
2006	3,448	3,953	-505	4,022	2,526	1,496	7,470	6,479	991
<b>Year ended December</b>									
1996	22,830	40,743	-17,913	56,175	13,469	42,706	79,005	54,212	24,793
1997	22,145	44,273	-22,128	45,491	15,739	29,752	67,636	60,012	7,624
1998	21,299	48,273	-26,974	36,921	16,212	20,709	58,220	64,485	-6,265
1999	22,551	53,215	-30,664	37,192	15,557	21,635	59,743	68,772	-9,029
2000	20,763	58,680	-37,917	42,231	15,626	26,605	62,994	74,306	-11,312
2001	23,465	56,031	-32,566	57,629	15,337	42,292	81,094	71,368	9,726
2002	25,417	42,112	-16,695	70,534	15,641	54,893	95,951	57,753	38,198
2003	27,691	38,859	-11,168	64,969	18,895	46,074	92,660	57,754	34,906
2004	25,069	43,190	-18,121	55,410	22,181	33,229	80,479	65,371	15,108
2005	24,165	49,201	-25,036	54,798	22,791	32,007	78,963	71,992	6,971
2006	24,018	47,616	-23,598	58,714	20,507	38,207	82,732	68,123	14,609

(1) Permanent and long-term arrivals include overseas migrants who arrive in New Zealand intending to stay for a period of 12 months or more (or permanently), plus New Zealand residents returning after an absence of 12 months or more.

(2) Permanent and long-term departures include New Zealand residents departing for an intended period of 12 months or more (or permanently), plus overseas visitors departing New Zealand after a stay of 12 months or more.

(3) A minus sign indicates an excess of departures over arrivals.