



Hot Off The Press

LATEST STATISTICS FROM STATISTICS NEW ZEALAND

Embargoed until 10:45am – 20 February 2007

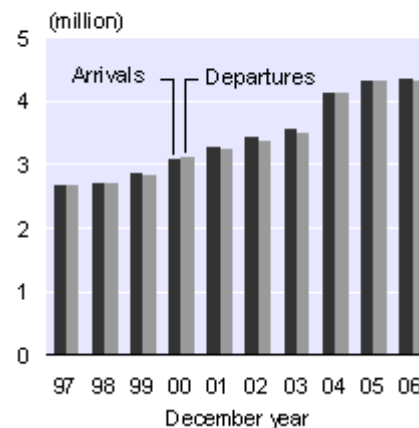
External Migration

December 2006 year

Highlights

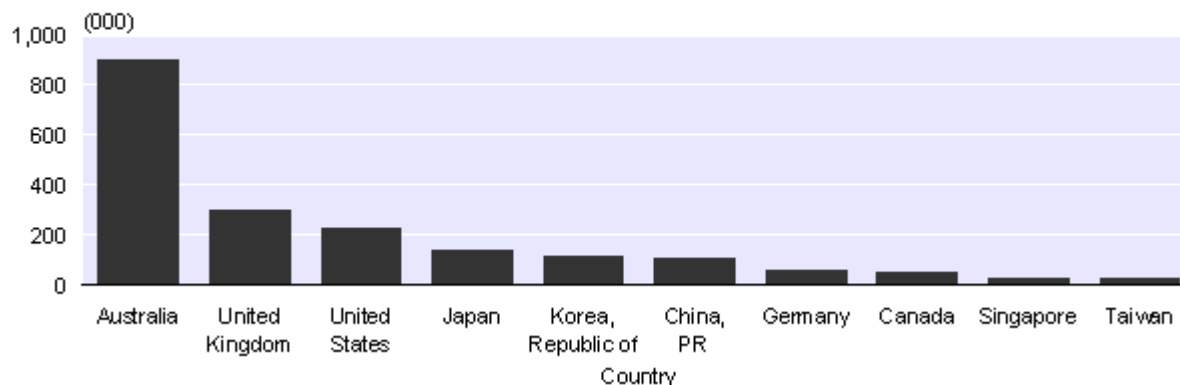
- In 2006, total passenger arrivals and departures numbered 8.73 million, up 0.5 percent on 2005.
- Half of all visitor arrivals were from Australia (903,500) and the United Kingdom (294,800).
- Australia was the main destination for half of the 1.86 million New Zealand resident short-term departures.
- Permanent and long-term arrivals exceeded departures by 14,600.

Arrivals and Departures
1997–2006



Visitor Arrivals from Top 10 Source Countries

December 2006 year



Brian Pink
Government Statistician

20 February 2007
Cat 33.901 Set 06/07 – 122

There is a companion Media Release published – [External Migration: December 2006 year](#).

Commentary

Arrivals and departures by class

Total passenger arrivals (4.382 million) and departures (4.351 million) both reached all-time highs in the year ended December 2006. Total passenger movements numbered 8.732 million in 2006, up from 8.688 million in 2005. The year-on-year increase of 44,700 (0.5 percent) is the smallest since 1997, when the Asian financial crisis affected growth, and follows increases of 1.209 million in 2004 and 363,000 in 2005.

Overseas visitors to New Zealand accounted for 55 percent of all passenger movements, and New Zealand residents on short-term overseas trips accounted for 43 percent. The remaining 2 percent of passenger movements were permanent and long-term (PLT) migrants.

In 2006, overseas visitor arrivals increased by 38,600 (2 percent) compared with 2005, to a new high of 2.422 million. Short-term departures of New Zealand residents decreased by 8,000 (less than 1 percent), to 1.864 million in 2006. This is the first December year decrease in New Zealand resident departures since 1992.

There were 82,700 PLT arrivals in 2006, up 5 percent on 2005. PLT departures decreased by 5 percent to 68,100. As a result, net PLT migration (the excess of arrivals over departures) increased from 7,000 in 2005 to 14,600 in 2006. During the last 15 years, net PLT migration has averaged 12,800 a year.

Overseas visitor arrivals

The following three sections examine trends in overseas visitor arrivals, highlighting country of last permanent residence, reason for travel and intended length of stay in New Zealand.

Visitors by source

In 2006, 38 percent of all visitor arrivals to New Zealand were from Australia. Visitors from Australia accounted for 31 percent of all visitors to New Zealand in 2002, but this quickly rose to 37 percent in 2004 – largely due to cheaper airfares and increased trans-Tasman air capacity. Of the increase in visitor arrivals between 2002 and 2006 (376,600), almost three-quarters (271,000) was from Australia. The remainder of Oceania contributed 5 percent of all visitor arrivals in 2006, unchanged from 2002.

Asia accounted for 21 percent of visitor arrivals in 2006, down from 27 percent in 2002. In 2006, there were 32,400 (6 percent) fewer visitor arrivals from Asia than in 2002. Within Asia, visitor arrivals decreased over this period from Japan (down 37,200), Taiwan (down 10,500), Thailand (down 6,800), Singapore (down 5,900) and Hong Kong (down 5,300). However, these were partly offset by an increase in visitor arrivals from China (up 29,200).

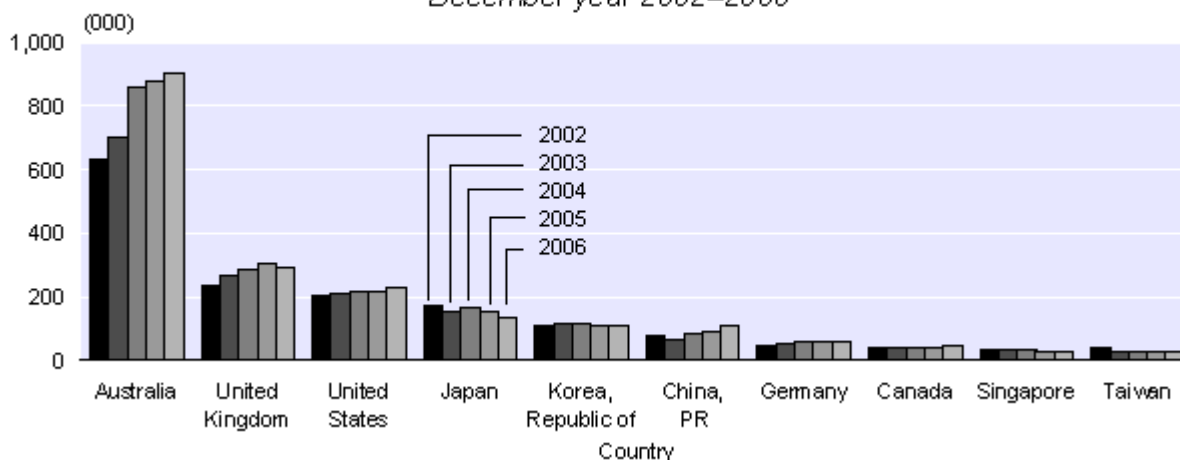
The share of visitor arrivals from Europe was 21 percent in 2006, up from 20 percent in 2002. The main sources within Europe were the United Kingdom and Germany, accounting for 12 percent and 2 percent of all visitors to New Zealand in 2006, respectively.

Another 12 percent of visitor arrivals in 2006 were from the Americas, down from 13 percent in 2002. This was due to a decrease in the proportion of visitors to New Zealand who were from the United States, from 10 percent in 2002 to 9 percent in 2006. The proportion of visitors who were from Canada remained stable at 2 percent.

In 2006, 80 percent of all visitor arrivals (1.939 million) were from the top ten source countries, compared with 78 percent (1.596 million) in 2002. The top ten source countries for visitor arrivals to New Zealand were the same in 2002 and 2006.

Visitor Arrivals from Top 10 Source Countries

December year 2002–2006



Visitors by reason for travel

Half of all visitors to New Zealand in 2006 arrived mainly for a holiday (1,195,500). A further 29 percent (690,200) came to visit friends and relatives (VFR) and 11 percent came for business (270,100).

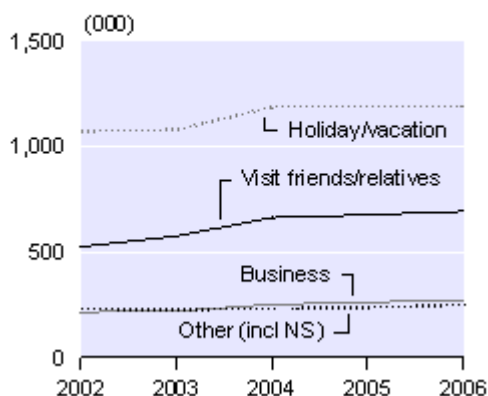
VFR arrivals increased the most between 2002 and 2006, up 167,800 (32 percent). Holiday arrivals increased 121,600 (11 percent) over the same period, with 106,800 of this occurring in 2004. There were 56,100 (26 percent) more business arrivals in 2006 than in 2002.

About 60 percent of visitor arrivals from Asia, Europe and the Americas in 2006 were for holiday purposes. However, only 38 percent of visitors from Oceania arrived for a holiday, with another 36 percent being VFR travellers and 16 percent business travellers.

Of all visitor arrivals in 2006, 62 percent of business visitors and 53 percent of people arriving for VFR purposes were from Oceania, compared with only 32 percent of all holiday visitors.

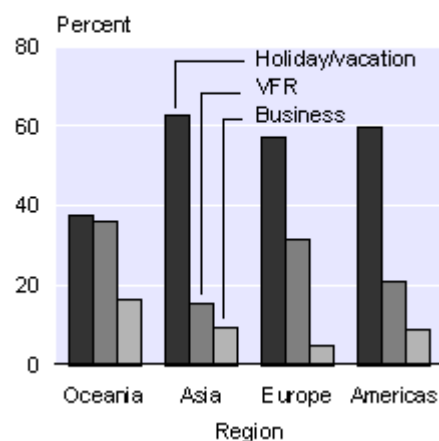
Visitor Arrivals by Reason

2002–2006



Visitor Arrivals by Reason

December 2006 year

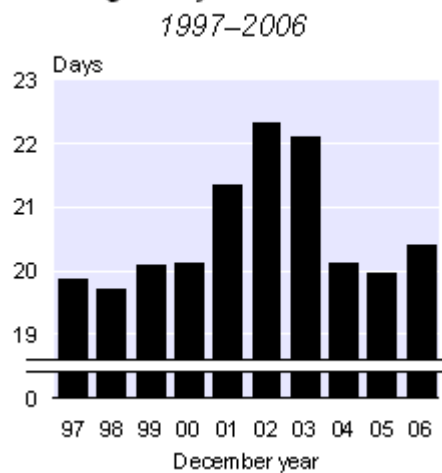


Visitors by length of stay

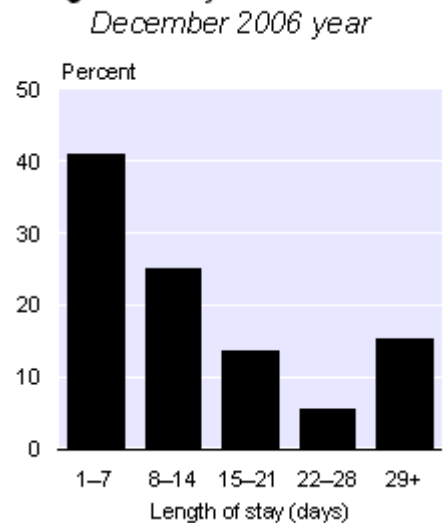
The average intended length of stay of visitor arrivals was 20 days in 2006, the same as the previous two years but below the 22 days recorded in 2002 and 2003. Average length of stay during 2001–2003 was boosted by high numbers of overseas students, who tended to stay longer than other visitors. The subsequent decrease in average length of stay in 2004 was mainly due to a large increase in short-staying Australian visitors.

In 2006, 41 percent of visitors stayed a week or less, and another 25 percent stayed between one and two weeks. Just 15 percent of visitors stayed for more than four weeks.

Average Stay of Visitor Arrivals



Length of Stay for Visitor Arrivals



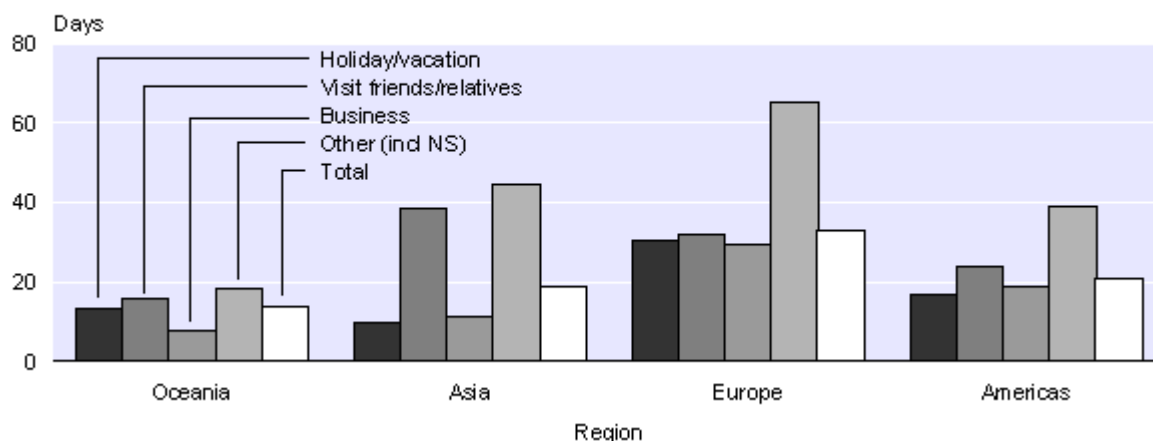
Visitors arriving for education and medical reasons had the longest average stay, at 87 days in 2006. VFR arrivals stayed an average of 24 days, holiday arrivals 17 days and business arrivals 12 days. Visitors coming for a convention or conference had the shortest average stay in 2006, at 8 days.

By region, visitors from Europe had the longest average stay (33 days) in 2006, while visitors from Oceania had the shortest (14 days). This reflects the differing time and cost of travel to New Zealand.

Although visitors from Asia had an average stay of 19 days in 2006, there was significant variation by reason for travel. Holiday visitors from Asia averaged a stay of 10 days and business visitors 11 days, while VFR arrivals from Asia averaged 39 days. Holiday visitors from China (who doubled in number between 2002 and 2006) averaged a stay of just 5 days in 2006, with 80 percent staying no longer than 4 days. Many of these people combine a visit to New Zealand with a visit to Australia.

Average Length of Stay for Visitor Arrivals by Region

December 2006 year



New Zealand resident departures

The following three sections present a brief analysis of the trends in short-term departures of New Zealand residents, highlighting country of main destination, reason for travel and length of absence from New Zealand.

Resident departures by main destination

Half of the New Zealand residents who departed on short-term trips in 2006 were mainly visiting Australia. This proportion was unchanged from 2002. In 2006, another 13 percent were visiting other countries in Oceania, led by Fiji, the Cook Islands and Samoa. Departures to Australia and Fiji decreased in 2006, down 1 percent and 3 percent, respectively, from 2005.

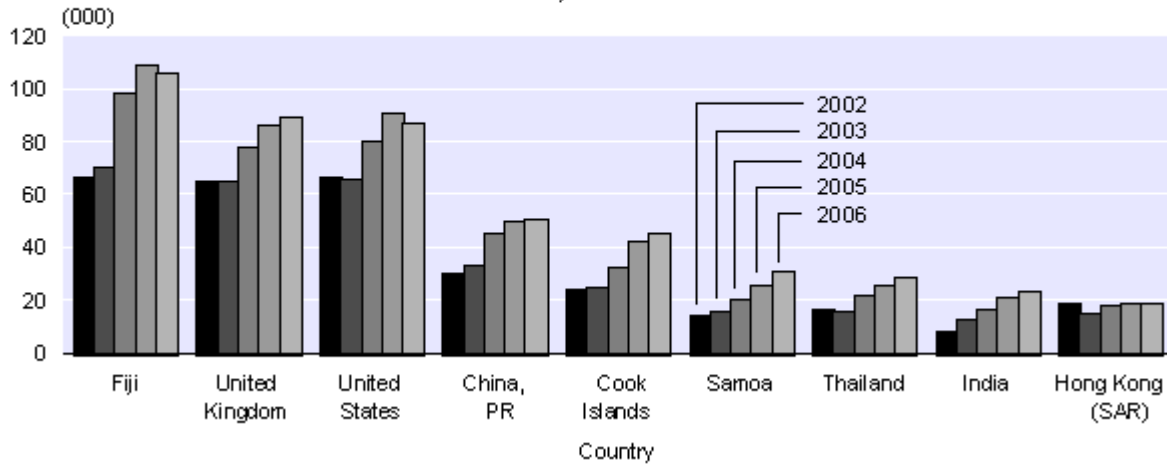
Countries in Asia were the main destination for 13 percent of New Zealand resident departures in 2006. Although this share was the same as in 2002, the main destinations within Asia – China, Thailand and India – all increased their share of departures. Asia-born accounted for half of all New Zealand resident departures to Asia in 2006. Two-thirds of trips to China were by China-born, but in contrast only 10 percent of trips to Thailand were by New Zealand residents born in that country.

In 2006, Europe was the main destination for 9 percent of New Zealand resident departures and the Americas 6 percent. This compared with 8 percent and 7 percent, respectively, in 2002.

New Zealand Resident Departures by Country of Main Destination

(Excluding Australia)

December year 2002–2006



Resident departures by reason for travel

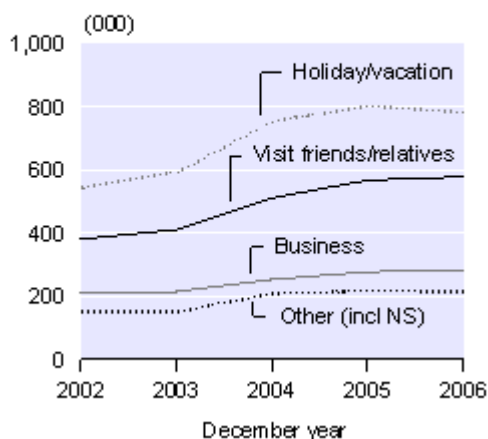
A holiday was the main reason for travel for 42 percent (784,000) of New Zealand resident departures in 2006. VFR travellers accounted for another 31 percent (576,300) and business travellers 15 percent (282,200).

Holiday departures decreased by 20,600 (3 percent) in 2006, compared with 2005, but were still up 237,300 (43 percent) on 2002. In 2006, there were 197,400 (52 percent) more trips for VFR purposes and 69,000 (32 percent) more trips for business than in 2002.

A holiday was the most common reason for travel to Oceania and the Americas in 2006, while VFR purposes were the most common reason for trips to Asia and Europe. Differences in reason for travel were more marked by country, with three-quarters of trips to the Cook Islands for a holiday, 12 percent for VFR purposes and just 5 percent for business. In contrast, only 32 percent of departures to Hong Kong were for a holiday, with 35 percent for VFR purposes and 25 percent for business.

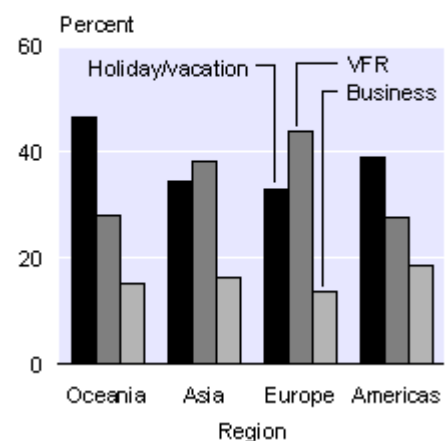
Resident Departures by Reason

2002–2006



Resident Departures by Reason

December 2006 year



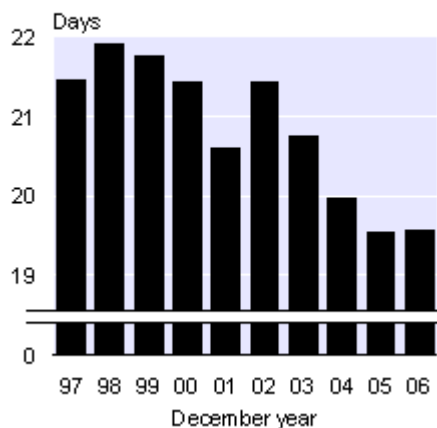
Resident departures by length of absence

The average length of absence of New Zealand resident short-term departures was 20 days in 2006. The average absence has generally decreased over the last 25 years as overseas travel has become easier and more affordable. In the early 1980s, the average absence of New Zealand resident departures was about 30 days.

In 2006, two-thirds of all New Zealand resident departures were for an intended absence of 14 days or less, while 17 percent intended an absence of over four weeks.

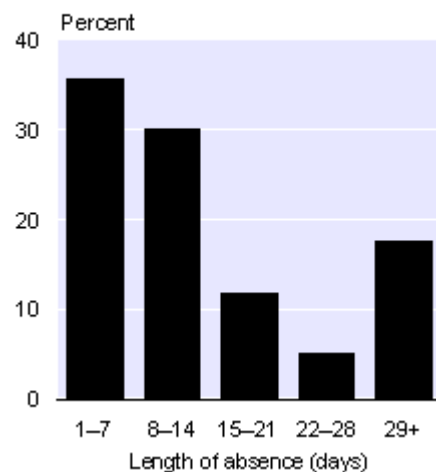
Average Absence of Residents

1997–2006



Length of Absence for Residents

December 2006 year



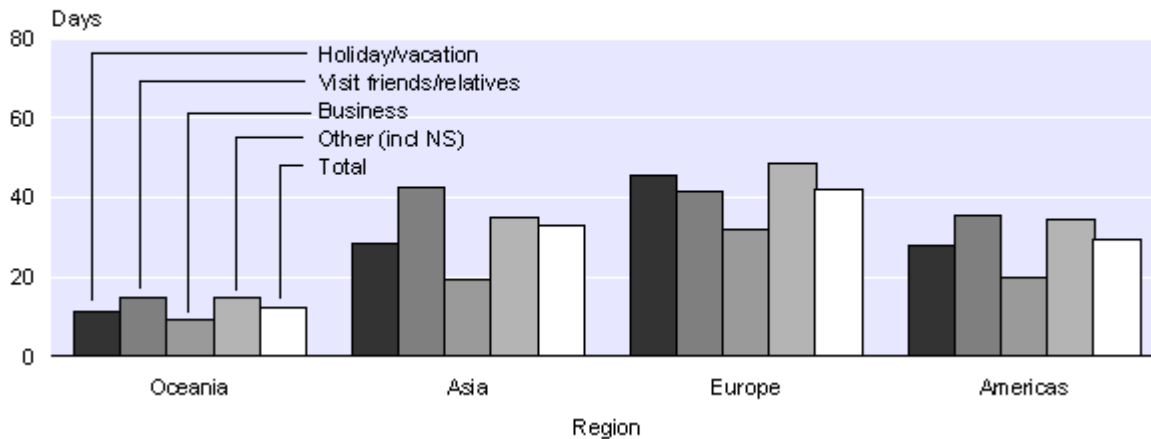
By reason for travel, VFR departures had the longest average absence in 2006, at 25 days. Holiday travellers averaged an absence of 17 days, business travellers 14 days and those attending a conference or convention 9 days.

New Zealand residents on trips to Europe averaged the longest absence (42 days) in 2006, ahead of Asia (33 days) and the Americas (30 days). The average length of trips to Oceania was much shorter (12 days). During the past decade, the average length of absence has decreased for trips to Europe and Oceania, from 51 days and 15 days in 1996, respectively. The average length of absence for trips to the Americas and Asia has decreased during the last few years, but is still longer than the average trip to these regions a decade ago (27 days and 31 days, respectively).

Within Asia, there were significant differences in average length of absence by destination country. In 2006, those mainly visiting India averaged a 48 day absence and China a 43 day absence. Those visiting Thailand averaged a much shorter absence, of 20 days. Most New Zealand residents taking trips to India and China in 2006 were born in those countries.

Average Length of Stay for Resident Departures by Region

December 2006 year



Permanent and long-term migration

The following three sections present a brief analysis of trends in New Zealand's permanent and long-term (PLT) migration by country of last or next permanent residence, age group and occupation.

Permanent and long-term migration by country

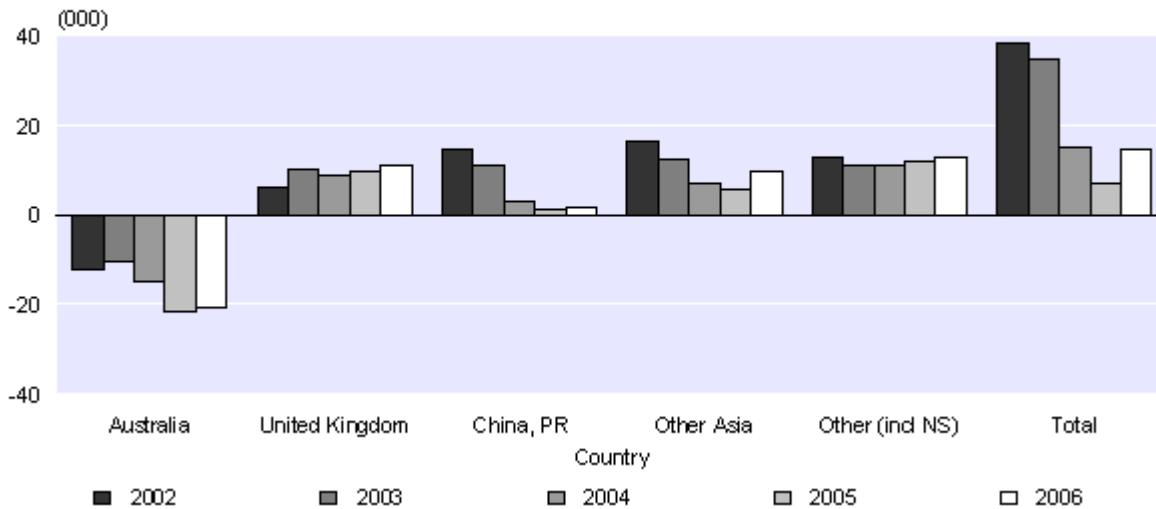
Net PLT migration was 14,600 in 2006, up from 7,000 in 2005 but well below the very high net inflows of 38,200 in 2002 and 34,900 in 2003. In 2006, there was a net PLT outflow of 20,700 to Australia, but a net inflow of 10,900 from the United Kingdom. There was also a net inflow of 11,400 from countries in Asia, led by 2,400 from the Philippines.

A key reason for the decrease in net PLT migration from the 2002 peak was a drop in PLT arrivals from Asia, which more than halved from 38,900 in 2002 to 17,700 in 2005, before recovering to 20,500 in 2006. China (down 11,700) and India (down 4,100) contributed the majority of the decrease between 2002 and 2006. The decrease from Asia was partly offset by more PLT arrivals from Europe, Oceania and the Americas. There were 22,700 PLT arrivals from the United Kingdom in 2006, compared with 18,800 in 2002.

An increase in PLT departures also contributed to the decrease in net PLT migration from the 2002 peak. In particular, departures to Australia increased from 24,600 in 2003 to 34,800 in 2005, before decreasing slightly to 34,000 in 2006. In the past 25 years, PLT departures to Australia have been highest in 1988 (45,100) and 2000 (38,200), and lowest in 1983 (14,500) and 1991 (15,400).

Net Permanent and Long-term Migration by Country

2002–2006



Permanent and long-term migration by age

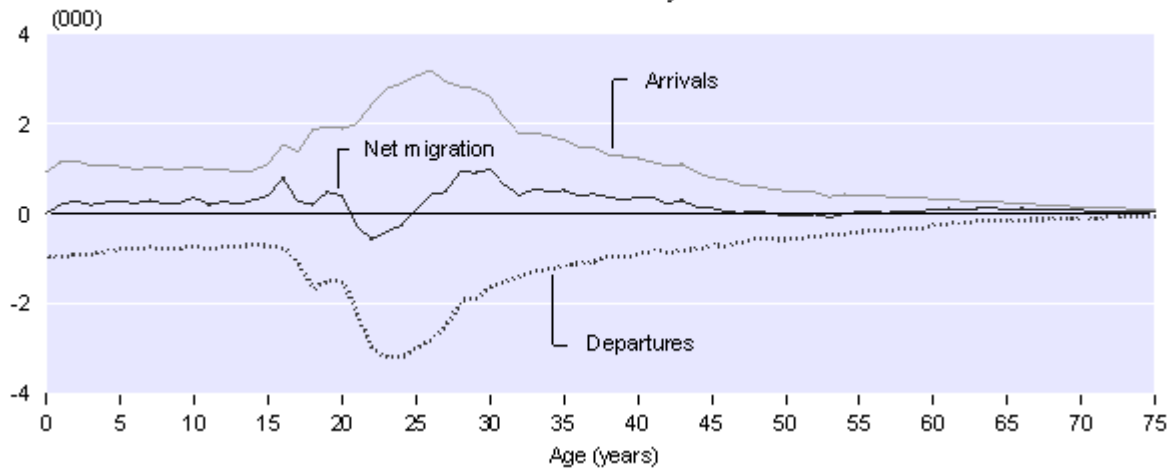
The most common age group of both PLT arrivals and PLT departures in 2006 was 20–29 years. One of the main reasons for the importance of these ages is the availability of working holiday visas, for both people coming to New Zealand and New Zealanders heading overseas. Just 13 percent of PLT arrivals and 14 percent of PLT departures were aged 45 years and over in 2006, compared with 43 percent of short-term travellers.

There were 13,200 fewer PLT arrivals in 2006 than in 2002, and the 15–19 year age group accounted for 5,400 of this decrease. This was largely due to fewer overseas student arrivals from Asia.

In 2006, net PLT outflows were recorded in the 20–24 year and 50–54 year age groups. Net PLT inflows were recorded in all other age groups, led by gains of 3,000 people aged 30–34, 2,800 people aged 25–29 and 2,100 people aged 15–19. During the very high net migration inflows of 2002 and 2003, net inflows were recorded in all age groups. The highest net inflows during 2002 and 2003 were in the 15–19 year age group, due to the high number of overseas student arrivals.

Permanent and Long-term Migration by Age

December 2006 year



Permanent and long-term migration by occupation

During 2002–2006, 47 percent of PLT arrivals and 41 percent of PLT departures did not have an occupation (eg housewives, students, retirees). In addition, 8 percent of PLT arrivals and 6 percent of PLT departures did not state a valid response. A further 12 percent of PLT arrivals and 11 percent of PLT departures stated an occupation (eg designer, analyst) which was not detailed enough to be coded to a specific occupation classification. This limits the potential value of occupation-based analysis.

In 2006, there was a net inflow of 3,900 people who stated an occupation, up on 1,200 in 2005 but below the annual gains of 2002–2004. Professionals recorded the largest net inflow of any occupation group in 2006, at 2,100. This is the second largest inflow of this occupation group in the past five years, after the net inflow of 2,400 in 2003. There were also net inflows of clerks (200) and technicians (100) in 2006, but net outflows of plant and machine operators (500), elementary occupations (300), agriculture and fishery workers (200) and service and sales workers (100).

Tourism and Migration 2005

Tourism and Migration 2005, the annual update of a number of tables contained in the *Tourism and Migration 2000* reference report, was released in June 2006. The update contains statistics on a December year basis up to 2005 on a range of topics, but does not include commentary or analysis. Tables updated since the 2000 report include overseas visitors, overseas trips by New Zealanders, tourist expenditure, permanent and long-term migration, and immigration permits. The *Tourism and Migration 2005* report can be found on the Statistics New Zealand website. *Tourism and Migration 2006*, which will include December 2006 year data, will be released by June 2007.

For technical information contact:

Ian Richards or Nick Thomson

Christchurch 03 964 8700

Email: demography@stats.govt.nz

Technical notes

Nature of data

The statistics in this release are based on final external migration counts for the December 2006 year. They relate to the number of movements of travellers, rather than to the number of travellers – that is, the multiple movements of individual people during a given reference period are each counted separately.

Data for country groupings

As of December 2000, the country groupings used in this release are consistent with the New Zealand Standard Classification of Countries 1999 (NZSCC 1999). Prior to this date, country groupings were based on the NZSCC 1995. The following changes have resulted:

1. The Americas region (which includes Northern America, Central America, the Caribbean and South America) replaces Northern America. As a result, countries in Central and South America and the Caribbean are no longer included in the 'Other' category in Tables 6–10.
2. Minor revisions have been made to some other regions.

New Zealand resident short-term departures

The commentaries relating to New Zealand resident short-term departures are based on the data for the country of main destination – that is, the country where each departing person intended to spend most of his or her time while away from New Zealand.

Changes in migrant category

In the preparation of migration statistics, the classification of each passenger is primarily determined by the passenger's response, on the arrival or departure card, to the question on intended or actual length of stay/absence. If the person's intention changes later during the trip, then they may also change their migrant category. For example, if a person comes to New Zealand with the declared intention of settling permanently, but in fact returns overseas after a few months, then that person is classified as a permanent and long-term (PLT) migrant on arrival, but is later classified as a short-term visitor on departure. This is known as migration category jumping. Data users should recognise the limitations inherent in the information supplied by travellers.

Sampling accuracy

The statistics for short-term passenger movements by country (ie arrivals by country of last permanent residence and departures by country of main destination) are derived from a systematic random sample taken each month from arrival and departure cards, and are therefore subject to sampling errors. However, total counts for short-term arrivals and departures of overseas visitors and New Zealand residents are actual counts, which are not subject to sampling errors. Figures for PLT arrivals and departures are also actual counts and have no sampling errors.

New migration processing system

To capture survey information more efficiently, Statistics NZ is developing new processing systems that incorporate scanning and image recognition technology. A new migration processing system using this technology was first used to process the arrival and departure cards for June 2004. A key difference between the new and previous systems is that there is now no need to manually enter the passport number for each traveller. In addition, classing (as overseas visitors, New Zealand residents or PLT migrants) and capture of the information required for the migration sample are done automatically for the majority of the cards. Those cards that cannot be classed (or are classed as PLT) and those with fields that cannot be recognised are manually processed using the card image. It is expected that operator intervention should only be required for approximately one-tenth of the cards. The new system, designed to capture the same information as previously captured, is used only for the production of statistics.

It is expected that data captured using the new system will be largely consistent with previous data. Users need to be aware of the changes to the processing system when comparing data for June 2004 onwards with data for earlier periods.

More information

For more information, follow the [link](#) from the Technical notes of this release on the Statistics NZ website.

Copyright

Information obtained from Statistics NZ may be freely used, reproduced, or quoted unless otherwise specified. In all cases Statistics NZ must be acknowledged as the source.

Liability

While care has been used in processing, analysing and extracting information, Statistics NZ gives no warranty that the information supplied is free from error. Statistics NZ shall not be liable for any loss suffered through the use, directly or indirectly, of any information, product or service.

Timing

Timed statistical releases are delivered using postal and electronic services provided by third parties. Delivery of these releases may be delayed by circumstances outside the control of Statistics NZ. Statistics NZ accepts no responsibility for any such delays.

Next release ...

External Migration: January 2007 will be released on 1 March 2007.

Statistics New Zealand: The first source of independent information for your key decisions.

Tables

The following tables can be downloaded from the Statistics New Zealand website in Excel 97 format. If you do not have access to Excel 97 or higher, you may use the [Excel file viewer](#) to view, print and export the contents of the file.

List of tables

1. Arrivals, departures and net migration by class, December year 2002–2006
2. Overseas visitor arrivals, by region/country of last permanent residence
3. Overseas visitor arrivals, by reason for travel
4. Average length of stay for overseas visitor arrivals, by region/country of last permanent residence
5. New Zealand resident short-term departures, by region/country of main destination
6. New Zealand resident short-term departures, by reason for travel
7. Average length of absence of New Zealand resident departures, by region/country of main destination
8. Permanent and long-term migration, by region/country of last or next permanent residence
9. Permanent and long-term migration, by age group
10. Permanent and long-term migration, by occupation

Table 1

Arrivals, Departures and Net Migration by Class
December year 2002–2006

Class	Year ended December					Change 2002–2006	
	2002	2003	2004	2005	2006	Number	Percent
Arrivals							
Short-term overseas visitor ⁽¹⁾	2,044,960	2,106,230	2,347,670	2,382,950	2,421,560	376,600	18.4
Short-term New Zealand resident ⁽²⁾	1,303,460	1,381,900	1,738,730	1,879,760	1,877,290	573,840	44.0
Permanent and long-term migrant ⁽³⁾	95,950	92,660	80,480	78,960	82,730	-13,220	-13.8
All classes	3,444,370	3,580,790	4,166,880	4,341,670	4,381,580	937,220	27.2
Departures							
Short-term overseas visitor ⁽¹⁾	2,024,520	2,102,790	2,359,690	2,402,250	2,418,950	394,430	19.5
Short-term New Zealand resident ⁽²⁾	1,293,940	1,374,410	1,733,210	1,871,800	1,863,780	569,850	44.0
Permanent and long-term migrant ⁽⁴⁾	57,750	57,750	65,370	71,990	68,120	10,370	18.0
All classes	3,376,210	3,534,960	4,158,270	4,346,040	4,350,860	974,650	28.9
Net migration⁽⁵⁾							
Permanent and long-term	38,200	34,910	15,110	6,970	14,610	-23,590	...
All classes	68,160	45,830	8,610	-4,370	30,730	-37,430	...

(1) Intended/actual length of stay in New Zealand less than 12 months.

(2) Intended/actual length of absence from New Zealand less than 12 months.

(3) Permanent and long-term arrivals include overseas migrants who arrive in New Zealand intending to stay for a period of 12 months or more (or permanently), plus New Zealand residents returning after an absence of 12 months or more.

(4) Permanent and long-term departures include New Zealand residents departing for an intended period of 12 months or more (or permanently), plus overseas visitors departing New Zealand after a stay of 12 months or more.

(5) Arrivals minus departures. A minus sign indicates an excess of departures over arrivals.

Symbol:

... Figures not applicable

Note: Individual figures may not sum to stated totals due to rounding.

Table 2

Overseas Visitor Arrivals⁽¹⁾
By region/country of last permanent residence

Region/country of last permanent residence	December year					Change 2002–2006	
	2002	2003	2004	2005	2006	Number	Percent
Number (000)							
Region							
Oceania	730.6	799.2	957.1	985.2	1,023.4	292.8	40.1
Asia	544.5	489.6	529.5	519.6	512.1	-32.4	-5.9
Europe	415.1	453.9	481.2	513.3	508.8	93.6	22.5
Americas	261.3	266.7	276.2	276.2	295.2	33.9	13.0
Other ⁽²⁾	93.6	95.0	90.2	71.3	69.5	-24.1	-25.8
Top 10 source countries	1,595.8	1,658.2	1,877.2	1,908.8	1,938.7	342.9	21.5
Australia	632.5	702.2	855.9	874.7	903.5	271.0	42.9
United Kingdom	237.0	264.8	283.7	306.8	294.8	57.8	24.4
United States of America	205.3	211.6	218.3	214.5	225.6	20.3	9.9
Japan	173.6	150.9	165.0	154.9	136.4	-37.2	-21.4
Korea, Republic of	109.9	112.7	113.9	112.0	111.4	1.4	1.3
China, PR	76.5	66.0	84.4	87.9	105.7	29.2	38.1
Germany	49.0	52.5	55.7	57.5	59.4	10.4	21.2
Canada	39.7	39.9	40.6	42.2	46.0	6.3	15.8
Singapore	34.0	32.6	32.9	29.7	28.2	-5.9	-17.2
Taiwan	38.4	25.0	26.7	28.5	27.8	-10.5	-27.5
All countries⁽³⁾	2,045.0	2,106.2	2,347.7	2,383.0	2,421.6	376.6	18.4
Percentage of total visitors							
Region							
Oceania	35.7	38.0	41.0	41.6	42.5	6.8	...
Asia	26.6	23.3	22.7	22.0	21.3	-5.4	...
Europe	20.3	21.6	20.6	21.7	21.1	0.8	...
Americas	12.8	12.7	11.8	11.7	12.3	-0.5	...
Other ⁽²⁾	4.6	4.5	3.9	3.0	2.9	-1.7	...
Top 10 source countries	78.0	78.8	80.4	80.7	80.5	2.5	...
Australia	30.9	33.4	36.7	37.0	37.5	6.6	...
United Kingdom	11.6	12.6	12.2	13.0	12.2	0.7	...
United States of America	10.0	10.1	9.4	9.1	9.4	-0.7	...
Japan	8.5	7.2	7.1	6.5	5.7	-2.8	...
Korea, Republic of	5.4	5.4	4.9	4.7	4.6	-0.8	...
China, PR	3.7	3.1	3.6	3.7	4.4	0.6	...
Germany	2.4	2.5	2.4	2.4	2.5	0.1	...
Canada	1.9	1.9	1.7	1.8	1.9	0.0	...
Singapore	1.7	1.5	1.4	1.3	1.2	-0.5	...
Taiwan	1.9	1.2	1.1	1.2	1.2	-0.7	...

(1) Intended length of stay in New Zealand is less than 12 months.

(2) Includes not stated.

(3) These totals are actual counts and may differ from the sum of individual figures for different regions that are derived from samples.

Symbol:

... not applicable

Note: Individual figures may not sum to stated totals due to rounding.

Table 3

Overseas Visitor Arrivals⁽¹⁾
By reason for travel

Region of last permanent residence by reason for travel	December year					Change 2002–2006	
	2002	2003	2004	2005	2006	Number	Percent
Number (000)							
Oceania							
Holiday/vacation	273.1	304.1	370.8	373.1	386.1	113.0	41.4
Visit friends/relatives	255.8	282.9	344.2	357.5	368.6	112.8	44.1
Business	125.6	132.3	154.8	158.8	166.6	41.0	32.7
Other ⁽²⁾	76.1	79.8	87.4	95.8	102.1	26.0	34.2
Total all reasons	730.6	799.2	957.1	985.2	1,023.4	292.8	40.1
Asia							
Holiday/vacation	355.4	314.7	343.5	332.4	321.2	-34.2	-9.6
Visit friends/relatives	78.8	81.8	86.1	80.7	77.4	-1.4	-1.8
Business	40.8	38.1	43.7	44.8	47.8	7.0	17.2
Other ⁽²⁾	69.4	54.9	56.2	61.6	65.6	-3.8	-5.5
Total all reasons	544.5	489.6	529.5	519.6	512.1	-32.4	-5.9
Europe							
Holiday/vacation	248.9	272.4	281.3	301.4	290.8	41.9	16.8
Visit friends/relatives	119.9	133.6	148.5	153.6	159.4	39.5	33.0
Business	21.0	20.7	21.9	25.5	25.0	4.0	19.1
Other ⁽²⁾	25.4	27.2	29.4	32.8	33.6	8.2	32.3
Total all reasons	415.1	453.9	481.2	513.3	508.8	93.6	22.5
Americas							
Holiday/vacation	167.1	166.8	168.2	162.5	175.3	8.2	4.9
Visit friends/relatives	46.9	49.1	55.7	57.4	61.2	14.3	30.5
Business	21.6	21.5	23.4	25.5	25.4	3.8	17.4
Other ⁽²⁾	25.7	29.3	28.9	30.8	33.3	7.6	29.7
Total all reasons	261.3	266.7	276.2	276.2	295.2	33.9	13.0
Other⁽³⁾							
Holiday/vacation	29.4	25.6	26.6	22.6	22.1	-7.3	-24.7
Visit friends/relatives	21.1	25.1	25.5	24.3	23.7	2.5	12.0
Business	4.9	4.9	5.0	4.6	5.3	0.3	6.8
Other ⁽²⁾	38.2	39.5	33.0	19.8	18.5	-19.7	-51.6
Total all reasons	93.6	95.0	90.2	71.3	69.5	-24.1	-25.8
Total all regions							
Holiday/vacation	1,073.9	1,083.7	1,190.4	1,192.0	1,195.5	121.6	11.3
Visit friends/relatives	522.4	572.5	660.0	673.6	690.2	167.8	32.1
Business	213.9	217.6	248.8	259.2	270.1	56.1	26.2
Other ⁽²⁾	234.8	230.7	234.9	240.8	253.1	18.3	7.8
Total all reasons⁽⁴⁾	2,045.0	2,106.2	2,347.7	2,383.0	2,421.6	376.6	18.4

(1) Intended length of stay in New Zealand is less than 12 months.

(2) Includes conferences and conventions, education/medical, other and not stated.

(3) Includes not stated.

(4) These totals are actual counts and may differ from the sum of individual figures for different regions and reasons for travel that are derived from samples.

Note: Individual figures may not sum to stated totals due to rounding.

Table 4

Average Length of Stay for Overseas Visitor Arrivals⁽¹⁾
By region/country of last permanent residence

Region/country of last permanent residence	December year					Change 2002–2006
	2002	2003	2004	2005	2006	
Number of days						
Region						
Oceania	15.1	14.8	13.5	13.3	13.7	-1.4
Asia	22.7	22.4	18.4	17.7	18.7	-4.0
Europe	33.3	33.1	32.4	32.1	33.0	-0.3
Americas	19.6	20.3	20.2	21.1	20.8	1.2
Other ⁽²⁾	35.1	34.5	34.2	35.3	36.6	1.4
Top 10 source countries						
Australia	13.2	13.0	12.2	11.9	12.1	-1.2
United Kingdom	31.8	31.6	30.8	29.7	30.2	-1.6
United States of America	17.3	18.0	18.1	18.3	17.9	0.6
Japan	15.6	17.9	15.2	14.3	15.0	-0.6
Korea, Republic of	21.3	19.5	15.9	15.5	17.1	-4.2
China, PR	41.6	34.7	20.7	18.1	16.2	-25.5
Germany	35.6	37.5	38.6	39.7	42.7	7.1
Canada	27.5	28.1	28.2	28.2	29.0	1.5
Singapore	14.2	14.2	13.3	12.4	14.4	0.2
Taiwan	18.2	22.2	19.2	18.1	22.6	4.4
All countries	22.3	22.1	20.1	19.9	20.4	-1.9

(1) Intended length of stay in New Zealand is less than 12 months.

(2) Includes not stated.

Table 5

New Zealand Resident Short-term Departures⁽¹⁾
By region/country of main destination

Region/country of main destination	December year					Change 2002–2006	
	2002	2003	2004	2005	2006	Number	Percent
Number (000)							
Region							
Oceania	789.0	858.9	1,075.1	1,161.3	1,162.8	373.7	47.4
Asia	169.9	165.6	210.5	231.5	235.2	65.3	38.4
Europe	107.4	108.9	136.3	149.7	159.7	52.4	48.8
Americas	85.4	83.8	103.0	115.9	115.1	29.7	34.7
Other ⁽²⁾	141.2	156.5	205.5	209.7	188.5	47.3	33.5
Top 10 main destinations	963.0	1,030.8	1,293.9	1,412.1	1,411.2	448.2	46.5
Australia	650.8	710.4	880.3	941.2	929.4	278.5	42.8
Fiji	66.9	70.6	98.8	109.0	106.2	39.4	58.9
United Kingdom	65.2	65.3	78.1	86.4	89.3	24.2	37.1
United States of America	67.2	66.2	80.4	90.8	87.0	19.8	29.5
China, PR	30.1	33.0	45.7	50.4	51.2	21.1	70.2
Cook Islands	24.0	25.2	32.5	42.5	45.2	21.2	88.5
Samoa	14.3	16.1	20.4	25.9	31.3	17.0	118.8
Thailand	17.0	16.0	22.3	25.9	29.1	12.1	71.1
India	8.8	12.7	17.0	20.9	23.5	14.8	168.4
Hong Kong (SAR)	18.8	15.2	18.5	19.2	18.9	0.1	0.8
All countries⁽³⁾	1,293.9	1,374.4	1,733.2	1,871.8	1,863.8	569.8	44.0
Percentage of total resident departures							
Region							
Oceania	61.0	62.5	62.0	62.0	62.4	1.4	...
Asia	13.1	12.0	12.1	12.4	12.6	-0.5	...
Europe	8.3	7.9	7.9	8.0	8.6	0.3	...
Americas	6.6	6.1	5.9	6.2	6.2	-0.4	...
Other ⁽²⁾	10.9	11.4	11.9	11.2	10.1	-0.8	...
Top 10 main destinations	74.4	75.0	74.7	75.4	75.7	1.3	...
Australia	50.3	51.7	50.8	50.3	49.9	-0.4	...
Fiji	5.2	5.1	5.7	5.8	5.7	0.5	...
United Kingdom	5.0	4.8	4.5	4.6	4.8	-0.2	...
United States of America	5.2	4.8	4.6	4.9	4.7	-0.5	...
China, PR	2.3	2.4	2.6	2.7	2.7	0.4	...
Cook Islands	1.9	1.8	1.9	2.3	2.4	0.6	...
Samoa	1.1	1.2	1.2	1.4	1.7	0.6	...
Thailand	1.3	1.2	1.3	1.4	1.6	0.2	...
India	0.7	0.9	1.0	1.1	1.3	0.6	...
Hong Kong (SAR)	1.5	1.1	1.1	1.0	1.0	-0.4	...

(1) Intended length of absence from New Zealand is less than 12 months.

(2) Includes not stated.

(3) These totals are actual counts and may differ from the sum of individual figures for different regions that are derived from samples.

Symbol:

... not applicable

Note: Individual figures may not sum to stated totals due to rounding.

Table 6

New Zealand Resident Short-term Departures⁽¹⁾
By reason for travel

Region of main destination by reason for travel	December year					Change 2002–2006	
	2002	2003	2004	2005	2006	Number	Percent
Number (000)							
Oceania							
Holiday/vacation	375.5	416.4	531.7	557.1	542.1	166.6	44.4
Visit friends/relatives	209.9	226.9	286.0	323.7	325.3	115.3	55.0
Business	126.3	134.4	153.8	170.5	179.2	52.9	41.9
Other ⁽²⁾	77.3	81.2	103.6	109.9	116.3	39.0	50.5
Total	789.0	858.9	1,075.1	1,161.3	1,162.8	373.7	47.4
Asia							
Holiday/vacation	60.2	54.8	72.3	79.9	81.5	21.4	35.5
Visit friends/relatives	57.2	62.8	76.3	85.6	89.9	32.7	57.2
Business	33.7	29.4	36.5	40.3	38.2	4.4	13.1
Other ⁽²⁾	18.8	18.5	25.4	25.6	25.6	6.8	35.9
Total	169.9	165.6	210.5	231.5	235.2	65.3	38.4
Europe							
Holiday/vacation	34.6	36.2	45.3	49.3	52.6	18.0	52.1
Visit friends/relatives	47.3	48.6	58.9	64.9	70.0	22.7	48.0
Business	14.8	14.3	18.1	20.1	21.9	7.1	48.1
Other ⁽²⁾	10.7	9.7	13.9	15.5	15.3	4.5	42.1
Total	107.4	108.9	136.3	149.7	159.7	52.4	48.8
Americas							
Holiday/vacation	27.5	32.5	39.2	46.4	45.2	17.6	64.1
Visit friends/relatives	23.9	22.6	27.9	30.6	31.9	8.0	33.5
Business	21.5	18.4	20.4	21.8	21.2	-0.2	-1.0
Other ⁽²⁾	12.6	10.3	15.4	17.0	16.8	4.2	33.7
Total	85.4	83.8	103.0	115.9	115.1	29.7	34.7
Other⁽³⁾							
Holiday/vacation	48.9	55.7	67.7	71.9	62.6	13.7	28.0
Visit friends/relatives	40.6	48.2	60.6	60.8	59.2	18.6	45.8
Business	17.0	17.5	23.6	23.8	21.8	4.8	28.1
Other ⁽²⁾	34.7	35.2	53.7	53.2	45.0	10.2	29.5
Total	141.2	156.5	205.5	209.7	188.5	47.3	33.5
Total all regions							
Holiday/vacation	546.7	595.6	756.2	804.6	784.0	237.3	43.4
Visit friends/relatives	378.9	409.2	509.7	565.7	576.3	197.4	52.1
Business	213.3	214.0	252.4	276.5	282.2	69.0	32.3
Other ⁽²⁾	154.1	154.9	212.0	221.3	218.9	64.7	42.0
Total all reasons⁽⁴⁾	1,293.9	1,374.4	1,733.2	1,871.8	1,863.8	569.8	44.0

(1) Intended length of absence from New Zealand is less than 12 months.

(2) Includes conferences and conventions, education/medical, other and not stated.

(3) Includes not stated.

(4) These totals are actual counts and may differ from the sum of individual figures for different regions and reasons for travel that are derived from samples.

Note: Individual figures may not sum to stated totals due to rounding.

Table 7

Average Length of Absence of New Zealand Resident Departures⁽¹⁾
By region/country of main destination

Region/country of main destination	December year					Change 2002–2006
	2002	2003	2004	2005	2006	
Number of days						
Region						
Oceania	13.2	12.7	12.3	12.3	12.2	-1.0
Asia	35.4	38.3	36.4	33.9	33.0	-2.4
Europe	45.3	43.5	42.3	41.1	42.1	-3.2
Americas	33.1	31.8	30.1	29.2	29.5	-3.5
Other ⁽²⁾	25.4	24.6	23.6	23.2	23.4	-1.9
Top 10 main destinations						
Australia	13.1	12.6	12.1	12.1	12.0	-1.1
Fiji	11.5	11.4	11.1	11.1	10.9	-0.6
United Kingdom	46.4	45.3	44.2	42.2	43.0	-3.4
United States of America	31.7	30.1	28.7	27.4	27.1	-4.7
China, PR	50.8	54.9	50.1	45.4	42.7	-8.1
Cook Islands	13.0	12.7	12.7	11.1	11.3	-1.7
Samoa	21.5	19.1	20.0	20.2	18.3	-3.2
Thailand	23.3	24.3	21.5	21.2	19.9	-3.4
India	56.4	51.8	52.7	47.7	47.8	-8.7
Hong Kong (SAR)	31.8	33.9	33.0	26.3	28.6	-3.2
All countries	21.4	20.7	20.0	19.5	19.6	-1.9

(1) Intended length of absence from New Zealand is less than 12 months.

(2) Includes not stated.

External Migration: December 2006 year

Table 8

Permanent and Long-term Migration
By region/country of last or next permanent residence

Region/country of last or next permanent residence	December year					Change 2002–2006	
	2002	2003	2004	2005	2006	Number	Percent
Arrivals⁽¹⁾							
Region							
Oceania	17,971	19,261	19,112	19,933	19,499	1,528	8.5
Asia	38,886	33,166	21,287	17,706	20,487	-18,399	-47.3
Europe	24,685	27,370	27,478	29,182	30,262	5,577	22.6
Americas	5,181	5,713	5,683	6,068	6,422	1,241	24.0
Other ⁽²⁾	9,228	7,150	6,919	6,074	6,062	-3,166	-34.3
Top 10 countries							
United Kingdom	18,835	21,317	20,981	22,013	22,695	3,860	20.5
Australia	13,018	14,344	14,216	13,389	13,306	288	2.2
China, PR	15,931	13,253	6,143	4,102	4,271	-11,660	-73.2
United States of America	3,244	3,573	3,451	3,674	3,636	392	12.1
Japan	4,099	4,096	3,802	3,471	3,192	-907	-22.1
India	6,860	5,269	3,052	2,569	2,743	-4,117	-60.0
Fiji	2,283	2,258	2,117	2,808	2,590	307	13.4
Philippines	1,162	893	597	844	2,533	1,371	118.0
Germany	1,034	1,171	1,562	2,080	2,283	1,249	120.8
Korea, Republic of	3,503	3,228	2,204	1,769	1,896	-1,607	-45.9
All countries	95,951	92,660	80,479	78,963	82,732	-13,219	-13.8
Departures⁽³⁾							
Region							
Oceania	26,837	26,469	30,931	36,817	35,790	8,953	33.4
Asia	7,628	9,409	11,500	10,886	9,104	1,476	19.3
Europe	16,297	14,557	15,353	16,399	15,627	-670	-4.1
Americas	3,809	4,064	4,148	4,947	4,758	949	24.9
Other ⁽²⁾	3,182	3,255	3,439	2,943	2,844	-338	-10.6
Top 10 countries							
Australia	25,070	24,569	28,938	34,766	34,015	8,945	35.7
United Kingdom	12,922	11,203	11,962	12,430	11,760	-1,162	-9.0
United States of America	2,373	2,393	2,331	2,800	2,596	223	9.4
China, PR	1,186	1,988	3,319	2,986	2,443	1,257	106.0
Korea, Republic of	1,624	2,434	2,884	2,492	1,825	201	12.4
Canada	1,113	1,222	1,247	1,485	1,440	327	29.4
Japan	1,830	1,907	1,836	1,826	1,404	-426	-23.3
Ireland	1,152	916	791	943	970	-182	-15.8
Germany	470	531	584	653	773	303	64.5
India	279	414	603	622	618	339	121.5
All countries	57,753	57,754	65,371	71,992	68,123	10,370	18.0

For footnotes, see end of table

Table 8
continued

Permanent and Long-term Migration
By region/country of last or next permanent residence

Region/country of last or next permanent residence	December year					Change 2002–2006	
	2002	2003	2004	2005	2006	Number	Percent
Net migration⁽⁴⁾							
Region							
Oceania	-8,866	-7,208	-11,819	-16,884	-16,291	-7,425	...
Asia	31,258	23,757	9,787	6,820	11,383	-19,875	...
Europe	8,388	12,813	12,125	12,783	14,635	6,247	...
Americas	1,372	1,649	1,535	1,121	1,664	292	...
Other ⁽²⁾	6,046	3,895	3,480	3,131	3,218	-2,828	...
Top 10 countries							
Australia	-12,052	-10,225	-14,722	-21,377	-20,709	-8,657	...
United Kingdom	5,913	10,114	9,019	9,583	10,935	5,022	...
Philippines	1,008	763	459	717	2,399	1,391	...
Fiji	2,046	1,897	1,719	2,399	2,257	211	...
India	6,581	4,855	2,449	1,947	2,125	-4,456	...
China, PR	14,745	11,265	2,824	1,116	1,828	-12,917	...
Japan	2,269	2,189	1,966	1,645	1,788	-481	...
Germany	564	640	978	1,427	1,510	946	...
South Africa	2,781	1,582	1,013	1,161	1,470	-1,311	...
Samoa	586	710	661	1,185	1,123	537	...
All countries	38,198	34,906	15,108	6,971	14,609	-23,589	...

(1) Permanent and long-term arrivals include overseas migrants who arrive in New Zealand intending to stay for a period of 12 months or more (or permanently), plus New Zealand residents returning after an absence of 12 months or more.

(2) Includes not stated.

(3) Permanent and long-term departures include New Zealand residents departing for an intended period of 12 months or more (or permanently), plus overseas visitors departing New Zealand after a stay of 12 months or more.

(4) Arrivals minus departures. A minus sign denotes an excess of departures over arrivals.

Symbol:

... not applicable

Table 9

Permanent and Long-term Migration
By age group

Age group	December year				
	2002	2003	2004	2005	2006
Arrivals					
0-4	5,390	5,335	4,938	5,138	5,328
5-9	5,679	5,418	4,695	4,743	4,990
10-14	5,771	5,524	4,778	4,788	4,848
15-19	13,172	10,990	8,330	7,540	7,740
20-24	14,112	14,543	12,023	11,474	11,940
25-29	15,601	15,751	14,238	13,826	14,736
30-34	11,387	11,456	9,944	9,588	9,974
35-39	7,988	7,724	6,559	6,661	7,129
40-44	5,909	5,672	4,909	5,065	5,380
45-49	3,793	3,495	3,218	3,210	3,254
50-54	2,403	2,296	2,171	2,192	2,185
55-59	1,644	1,648	1,733	1,717	1,865
60-64	1,283	1,149	1,158	1,231	1,389
65 and over	1,819	1,659	1,785	1,790	1,974
Total	95,951	92,660	80,479	78,963	82,732
Departures					
0-4	3,142	3,180	3,858	4,604	4,448
5-9	2,899	2,934	3,540	4,043	3,786
10-14	2,765	3,253	3,757	4,122	3,574
15-19	4,889	5,171	5,749	6,224	5,675
20-24	11,589	12,042	13,603	14,076	13,130
25-29	11,434	10,645	11,803	12,716	11,968
30-34	6,057	5,816	6,488	7,064	6,963
35-39	4,104	3,967	4,576	5,238	5,147
40-44	3,141	3,151	3,615	4,130	4,075
45-49	2,341	2,287	2,607	3,027	3,073
50-54	1,930	1,895	2,088	2,463	2,445
55-59	1,365	1,287	1,595	1,842	1,736
60-64	831	817	839	1,003	904
65 and over	1,266	1,309	1,253	1,440	1,199
Total	57,753	57,754	65,371	71,992	68,123
Net migration⁽¹⁾					
0-4	2,248	2,155	1,080	534	880
5-9	2,780	2,484	1,155	700	1,204
10-14	3,006	2,271	1,021	666	1,274
15-19	8,283	5,819	2,581	1,316	2,065
20-24	2,523	2,501	-1,580	-2,602	-1,190
25-29	4,167	5,106	2,435	1,110	2,768
30-34	5,330	5,640	3,456	2,524	3,011
35-39	3,884	3,757	1,983	1,423	1,982
40-44	2,768	2,521	1,294	935	1,305
45-49	1,452	1,208	611	183	181
50-54	473	401	83	-271	-260
55-59	279	361	138	-125	129
60-64	452	332	319	228	485
65 and over	553	350	532	350	775
Total	38,198	34,906	15,108	6,971	14,609

(1) Arrivals minus departures. A minus sign indicates an excess of departures over arrivals.

Table 10

Permanent and Long-term Migration
By occupation

Occupation	December year					Total 2002–2006
	2002	2003	2004	2005	2006	
Arrivals						
Legislators, administrators and managers	3,435	3,334	2,944	2,970	2,981	15,664
Professionals	9,764	9,688	9,292	9,374	9,945	48,063
Technicians and associate professionals	4,267	4,849	4,164	3,712	3,904	20,896
Clerks	3,558	3,497	2,682	2,471	2,427	14,635
Service and sales workers	3,565	3,819	3,635	3,790	4,322	19,131
Agriculture and fishery workers	975	988	877	1,034	970	4,844
Trades workers	2,374	2,661	2,684	2,886	2,855	13,460
Plant and machine operators and assemblers	952	1,018	1,051	1,055	1,177	5,253
Elementary occupations ⁽¹⁾	556	700	588	665	641	3,150
Occupation unidentifiable or illegible	10,094	9,465	8,966	10,311	11,171	50,007
Total occupations	39,540	40,019	36,883	38,268	40,393	195,103
Not applicable ⁽²⁾	48,054	44,647	37,291	34,929	36,159	201,080
Not stated	8,357	7,994	6,305	5,766	6,180	34,602
Total	95,951	92,660	80,479	78,963	82,732	430,785
Departures						
Legislators, administrators and managers	2,686	2,436	2,619	3,005	3,013	13,759
Professionals	8,292	7,310	7,536	7,867	7,851	38,856
Technicians and associate professionals	3,948	3,976	4,042	3,797	3,823	19,586
Clerks	2,603	2,469	2,243	2,224	2,244	11,783
Service and sales workers	3,697	3,532	3,982	4,420	4,410	20,041
Agriculture and fishery workers	1,082	964	1,025	1,102	1,128	5,301
Trades workers	2,147	2,183	2,326	2,730	2,844	12,230
Plant and machine operators and assemblers	1,048	1,150	1,371	1,693	1,631	6,893
Elementary occupations ⁽¹⁾	710	812	834	1,035	938	4,329
Occupation unidentifiable or illegible	5,716	5,224	6,874	9,239	8,644	35,697
Total occupations	31,929	30,056	32,852	37,112	36,526	168,475
Not applicable ⁽²⁾	22,738	24,052	28,029	29,987	27,045	131,851
Not stated	3,086	3,646	4,490	4,893	4,552	20,667
Total	57,753	57,754	65,371	71,992	68,123	320,993
Net migration⁽³⁾						
Legislators, administrators and managers	749	898	325	-35	-32	1,905
Professionals	1,472	2,378	1,756	1,507	2,094	9,207
Technicians and associate professionals	319	873	122	-85	81	1,310
Clerks	955	1,028	439	247	183	2,852
Service and sales workers	-132	287	-347	-630	-88	-910
Agriculture and fishery workers	-107	24	-148	-68	-158	-457
Trades workers	227	478	358	156	11	1,230
Plant and machine operators and assemblers	-96	-132	-320	-638	-454	-1,640
Elementary occupations ⁽¹⁾	-154	-112	-246	-370	-297	-1,179
Occupation unidentifiable or illegible	4,378	4,241	2,092	1,072	2,527	14,310
Total occupations	7,611	9,963	4,031	1,156	3,867	26,628
Not applicable ⁽²⁾	25,316	20,595	9,262	4,942	9,114	69,229
Not stated	5,271	4,348	1,815	873	1,628	13,935
Total	38,198	34,906	15,108	6,971	14,609	109,792

(1) Includes labourers and related elementary service workers.

(2) Includes retired people, housewives and students.

(3) Arrivals minus departures. A minus sign indicates an excess of departures over arrivals.