

Embargoed until 10:45am – 4 February 2008

External Migration: December 2007

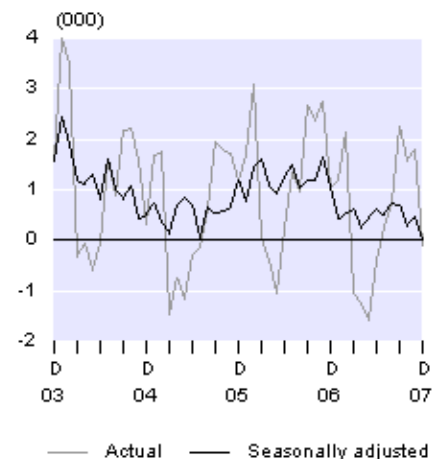
Highlights

- Visitor arrivals (317,300) were down 1 percent from December 2006 (319,000).
- There were more visitors from Australia (up 4,600) but fewer from the United Kingdom (down 4,400).
- New Zealand resident departures (199,700) were up 5 percent from December 2006 (190,500).
- There were more trips by New Zealand residents to Fiji (up 1,900) and China (up 1,700), but fewer to Australia (down 1,800).

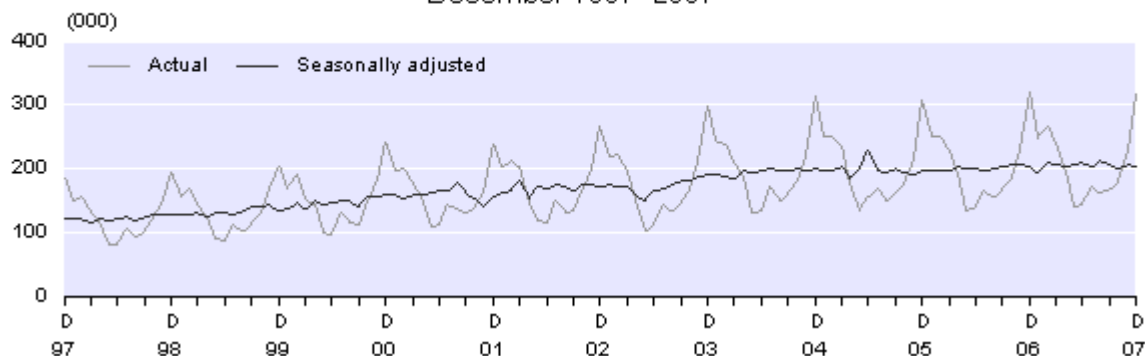
On a seasonally adjusted basis:

- Visitor arrivals fell 1 percent from November 2007.
- Overseas trips by New Zealand residents were unchanged.
- Permanent and long-term arrivals matched departures.

Monthly Net Permanent and Long-term Migration
December 2003–2007



Monthly Visitor Arrivals
December 1997–2007



Geoff Bascand
Government Statistician

4 February 2008
ISSN 1178-0274

There is a companion Media Release published – [External Migration: December 2007](#).

Commentary

Visitor arrivals

Monthly visitor arrivals

There were 317,300 short-term overseas visitor arrivals to New Zealand in December 2007, a decrease of 1,800 (1 percent) from December 2006. This followed an increase of 12,000 (4 percent) in December 2006, compared with December 2005.

Seasonally adjusted visitor arrivals decreased 1 percent between November and December 2007. This follows an increase of 3 percent between October and November 2007.

The number of intended stay days for all visitor arrivals in December 2007 was 7.32 million, up 1 percent from the 7.25 million intended stay days in December 2006. The average length of stay was 23 days in December 2007, and the median length of stay (half are shorter, and half longer, than this duration) was 14 days.

Quarterly visitor arrivals

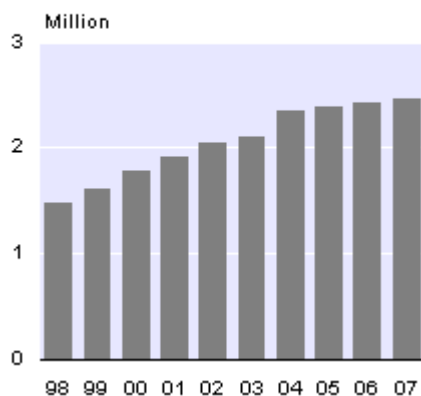
There were 726,000 visitor arrivals in the December 2007 quarter, a decrease of 9,600 (1 percent) from the 735,600 visitor arrivals in the December 2006 quarter. Visitor arrivals decreased for each month of the quarter, when compared with the same month in 2006.

Annual visitor arrivals

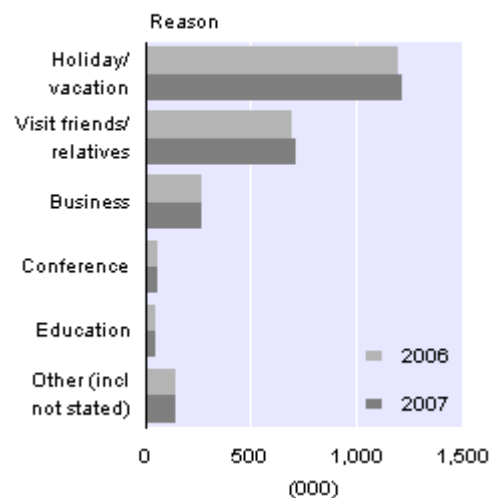
During the December 2007 year, there were 2.466 million visitor arrivals, up 44,100 (2 percent) from the December 2006 year.

A holiday was the main reason for travel for 1.211 million visitor arrivals to New Zealand in the December 2007 year, up 15,500 (1 percent) from the previous year. Another 713,000 arrived to visit friends and relatives (up 22,800 or 3 percent) and 267,900 arrived for business (down 2,200 or 1 percent).

Annual Visitor Arrivals
Year ended December



Visitor Arrivals by Reason
Year ended December

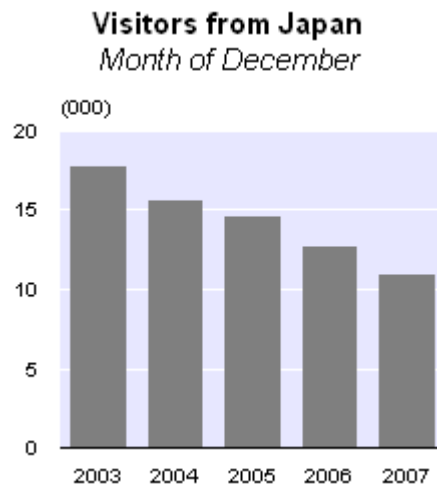
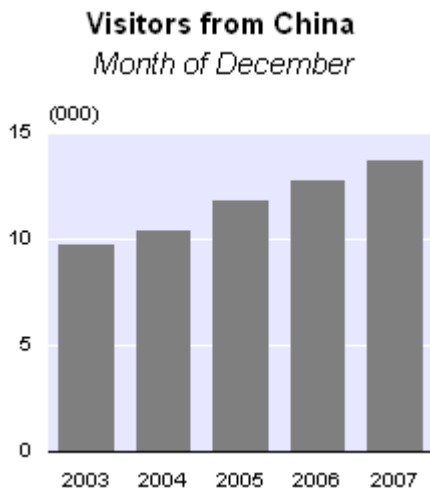


Note: Provisional international travel statistics, including weekly and four-weekly visitor arrival data, are available on the Statistics NZ website: www.stats.govt.nz. This data is updated each week with the most recently available information on visitor arrivals from 10 major source countries.

Visitors by source country

There were 125,800 visitor arrivals from Australia in December 2007, up 4,600 (4 percent) from December 2006. By Australian state, visitor arrivals increased 2,700 (9 percent) from Queensland and 2,000 (8 percent) from Victoria.

More visitors arrived from China (up 900 or 7 percent), Canada (up 900 or 15 percent), Germany (up 700 or 9 percent), India (up 700 or 31 percent) and South Africa (up 500 or 15 percent) in December 2007. However, there were fewer visitors from the United Kingdom (down 4,400 or 10 percent), Korea (down 3,600 or 31 percent), Japan (down 1,700 or 14 percent), the United States (down 1,200 or 5 percent) and Taiwan (down 900 or 39 percent).



In the year ended December 2007, there were more visitors from Oceania (up 49,900 or 5 percent) and Europe (up 1,400 or less than 1 percent) compared with the December 2006 year. Fewer visitors arrived from Asia (down 9,700 or 2 percent) and the Americas (down 4,700 or 2 percent).

Australia provided the largest increase in visitor arrivals in the December 2007 year, up 46,700 (5 percent) to 950,200. Increases in visitor arrivals were also recorded from China (up 15,100 or 14 percent), South Africa (up 3,300 or 18 percent) and Thailand (up 2,300 or 13 percent).

Visitor arrivals from Japan numbered 121,700 in the December 2007 year, down 14,700 (11 percent) from the previous year, and the lowest December year figure since 1991. In the December 2007 year, there were also decreases in visitor arrivals from Korea (down 11,900 or 11 percent), the United States (down 9,600 or 4 percent), Fiji (down 2,100 or 9 percent), Taiwan (down 2,100 or 8 percent) and the United Kingdom (down 2,100 or 1 percent), .

Note: Detailed visitor data will be available in the December 2007 edition of *International Visitor Arrivals to New Zealand*, which can be ordered via the Statistics NZ website: www.stats.govt.nz.

New Zealand resident departures

Monthly resident departures

New Zealand residents departed on 199,700 short-term overseas trips in December 2007, up 9,200 (5 percent) from the 190,500 departures in December 2006. Almost 40 percent of this increase was due to sea cruises to the Pacific Islands.

In December 2007, New Zealand residents departed on 7,900 trips to Fiji, up 32 percent from 6,000 trips in December 2006 but still 5 percent lower than the December 2005 figure of 8,300. The drop in December 2006 followed the Fijian political coup on 5 December. There were also more trips to China (up 1,700 or 22 percent), India (up 900 or 19 percent), the Cook Islands (up 800 or 23 percent), New Caledonia (up 800 or 188 percent), Canada (up 800 or 51 percent) and the United States (up 600 or 7 percent). Trips to Canada may have been boosted by the introduction of non-stop flights between Auckland and Vancouver at the beginning of November 2007.

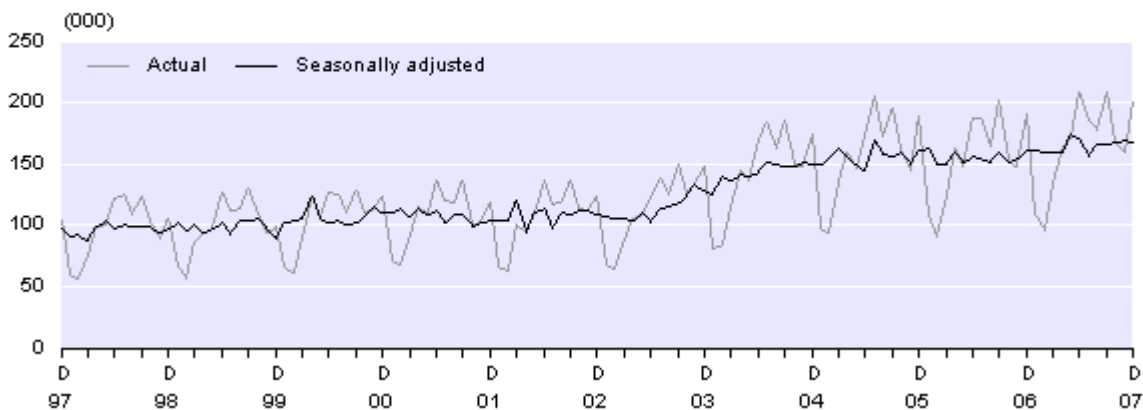
In contrast, there were 84,200 New Zealand resident trips to Australia, down 1,800 (2 percent) from December 2006.

On a seasonally adjusted basis, New Zealand resident departures were unchanged from November to December 2007.

The number of intended days away for resident departures was up 8 percent, to 4.90 million days in December 2007. The average intended length of absence was 25 days in December 2007, and the median intended length of absence was 17 days.

Monthly New Zealand Resident Short-term Departures

December 1997–2007



Quarterly resident departures

There were 527,300 resident departures in the December 2007 quarter, an increase of 36,800 (8 percent) from the total of 490,500 in the December 2006 quarter.

Annual resident departures

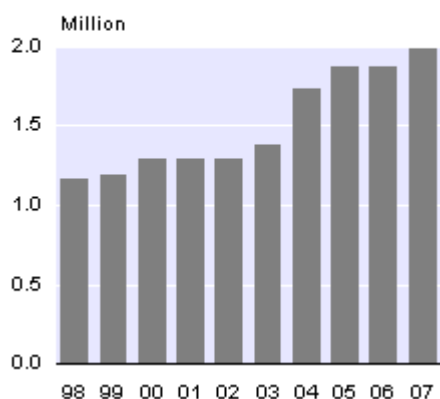
In the December 2007 year, there were 1.980 million resident departures, up 116,400 (6 percent) from the December 2006 year. There were more resident departures to Oceania (up 59,700 or 5 percent), Europe (up 17,400 or 11 percent), Asia (up 14,900 or 6 percent) and the Americas (up 7,000 or 6 percent), compared with the December 2006 year.

The largest increase was in resident departures to Australia (up 48,500 or 5 percent), which was the destination for half of New Zealand residents departing on short-term trips in the December 2007 year. There were more trips to France (up 7,400 or 63 percent) and the United Kingdom (up 6,600 or 7 percent) in part because of the Rugby World Cup in September and October 2007. There were also more trips to China (up 6,700 or 13 percent), the Cook Islands (up 6,500 or 14 percent), Samoa (up 5,400 or 17 percent), the United States (up 5,400 or 6 percent), Japan (up 2,800 or 16 percent), Vanuatu (up 2,600 or 28 percent) and India (up 2,500 or 10 percent).

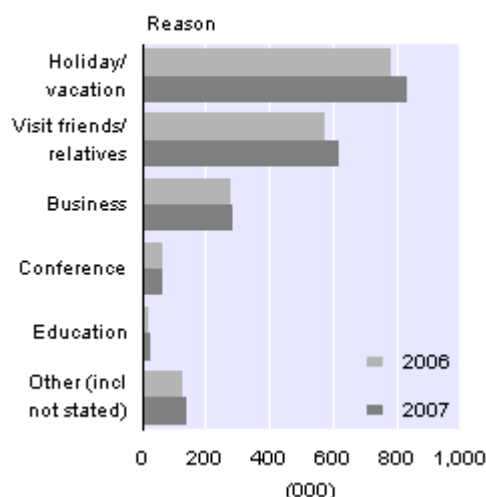
Trips to Fiji numbered 97,400 in the year ended December 2007, down 8,800 (8 percent) from the previous year, mainly due to the political situation in that country. Fiji is again the second most common country of destination for New Zealand residents on short-term overseas trips.

A holiday was the main reason for travel for 836,700 New Zealand resident departures in the December 2007 year, up 52,700 (7 percent) from the previous year. Another 621,100 were departing to visit friends and relatives (up 44,800 or 8 percent) and 289,200 were departing for business purposes (up 7,000 or 2 percent).

Annual Resident Departures
Year ended December



Resident Departures by Reason
Year ended December



Note: Provisional international travel statistics, including weekly and four-weekly resident departure data, are available on the Statistics NZ website: www.stats.govt.nz. This data is updated each week with the most recently available information on resident departures to 10 major destination countries.

Visitors in New Zealand and residents temporarily overseas

Statistics NZ recently released an article, *Estimates of short-term travellers in and out of New Zealand*, on the [International Travel and Migration Articles](#) page of the Statistics NZ website. The article analyses the estimated number of overseas visitors in New Zealand each day within the June 2007 year, and the estimated number of New Zealand residents temporarily overseas each day over the same period.

During the year ended June 2007, there were estimated daily averages of 136,000 overseas visitors in New Zealand and 102,300 New Zealand residents overseas on a short-term trip. Visitor numbers in New Zealand were generally higher in summer and lower in winter, and ranged between a low of 85,100 on 31 August 2006 and a high of 245,100 on 28 December 2006. The number of New Zealand residents temporarily overseas peaked around school holiday, Easter and Christmas periods.

Permanent and long-term migration

Definition

Permanent and long-term (PLT) arrivals include people who arrive in New Zealand intending to stay for a period of 12 months or more (or permanently), plus New Zealand residents returning after an absence of 12 months or more. Included in the former group are people with New Zealand residency, as well as students and holders of work permits. PLT departures include New Zealand residents departing for an intended period of 12 months or more (or permanently), plus overseas visitors departing New Zealand after a stay of 12 months or more.

Monthly PLT migration

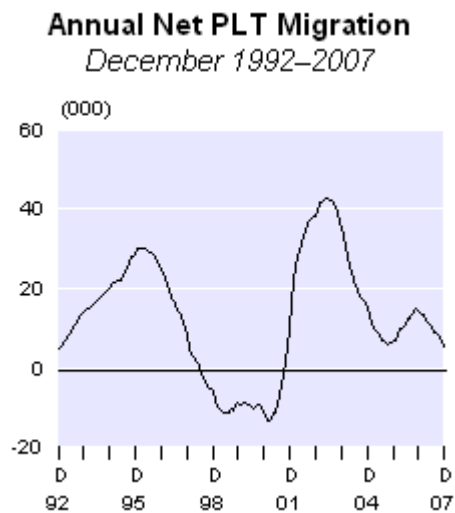
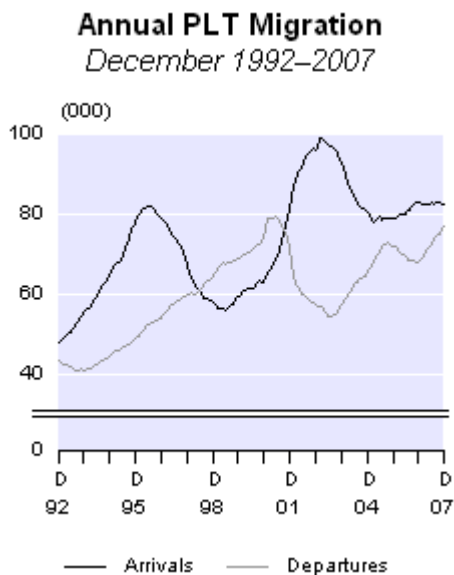
PLT departures exceeded arrivals by 100 in December 2007, compared with an excess of 1,000 arrivals over departures in December 2006. The change in the direction of the net flow was mainly due to 900 more New Zealand citizen departures (including 800 more to Australia) and 200 more non-New Zealand citizen departures.

On a seasonally adjusted basis, PLT arrivals matched the PLT departures in December 2007. This is the lowest seasonally adjusted net flow since May 2001 (net outflow of 200).

In December 2007, there was a net outflow of 2,500 PLT migrants to Australia, up from the outflow of 1,700 in December 2006. There was a net inflow of 1,200 from the United Kingdom, 300 from Fiji, and 200 each from the Philippines, India and South Africa. The net inflow from the United Kingdom was down from 1,500 in December 2006.

Annual PLT migration

In the year ended December 2007, there were 82,600 PLT arrivals, down 200 (less than 1 percent) from the December 2006 year. Over the same period, there were 77,100 PLT departures, up 9,000 (13 percent). As a result, net PLT migration was 5,500 in the December 2007 year, down from 14,600 in the December 2006 year.

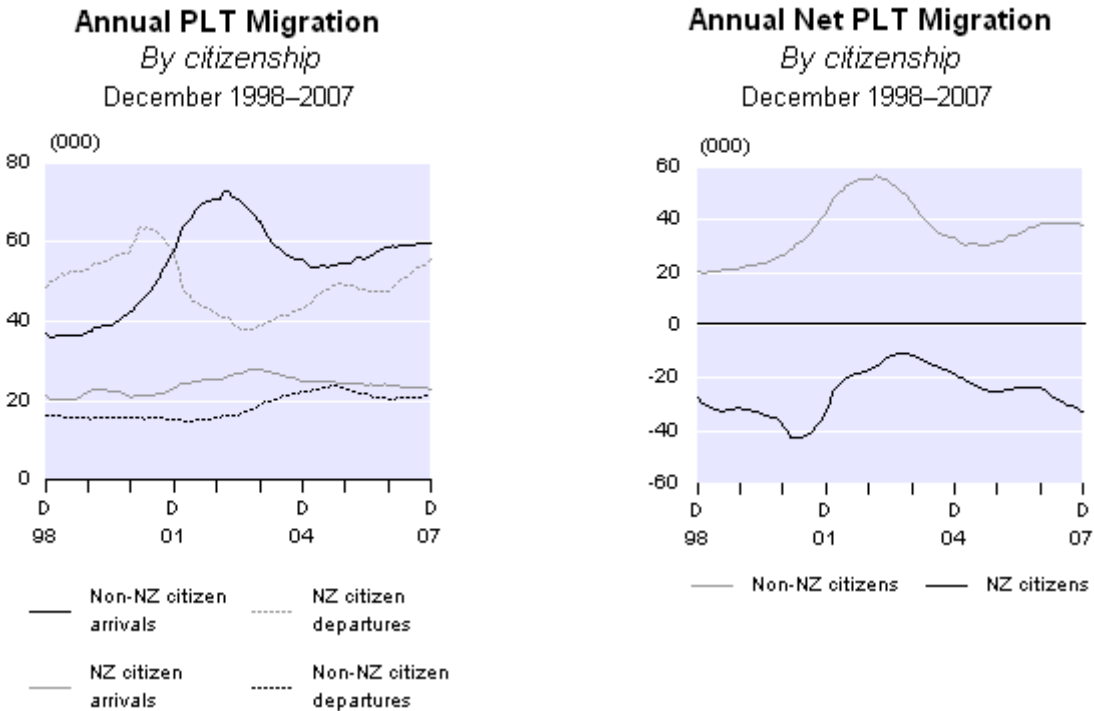


The net PLT migration gain in the year ended December 2007 (5,500) is below the annual average of 11,800 recorded for the December years from 1990–2007. Net PLT migration varied substantially within this 18-year period. The net gain peaked at 30,200 in the April 1996 year and again at 42,500 in the May 2003 year. Net outflows were generally experienced during 1998–2001, the highest being a net loss of 13,200 people in the February 2001 year.

Annual PLT migration by citizenship

There was a net inflow of 38,200 non-New Zealand citizens in the year ended December 2007, and a net outflow of 32,700 New Zealand citizens. The majority of the net outflow of New Zealand citizens was to Australia (28,600) followed by the United Kingdom (1,600), Canada (400) and the United States and India (both 200).

Compared with the December 2006 year, PLT arrivals of non-New Zealand citizens were up 900 and PLT arrivals of New Zealand citizens were down 1,000. There were 8,000 more PLT departures of New Zealand citizens and 900 more PLT departures of non-New Zealand citizens. Changes in non-New Zealand citizen departures are often related to changes in non-New Zealand citizen arrivals a few years earlier. Similarly, changes in New Zealand citizen arrivals are often related to changes in New Zealand citizen departures a few years earlier.



Annual PLT migration by country

A net inflow of 7,100 migrants from the United Kingdom was recorded in the year ended December 2007, down from 10,900 the previous year. There were also net PLT inflows of 3,600 from India, 3,200 from the Philippines, 2,500 from Fiji, and 1,800 from both China and South Africa. China was the leading net source of PLT migrants during the December 1996–2003 years, but the United Kingdom has been the leading source since.

The net PLT outflow to Australia was 28,000 in the December 2007 year, compared with 20,700 in the December 2006 year. This is the highest December year net outflow to Australia since the 33,400 recorded in 1988.

Young adults are not the only group heading to Australia. Migrants aged 15–29 years accounted for 40 percent (11,200) of the net outflow to Australia in 2007 but another 23 percent (6,500) were aged 0–14 years, 23 percent (6,400) were aged 30–44 years, 12 percent (3,400) were aged 45–59 years, and just 2 percent (500) were aged 60 years and over.

Split PLT data

Statistics NZ began separately identifying permanent arrivals from long-term arrivals in July 2003 (departing migrants are also separately identified). Within the long-term group, a further distinction is made between overseas visitors coming to stay in New Zealand for 12 months or more (long-term overseas visitors) and New Zealand residents returning after an overseas stay of 12 months or more (long-term New Zealand residents).

The classification of a person as a permanent or long-term migrant depends on that person's responses to the questions on the arrival and departure cards. Both cards require completion of one of two sections, depending on whether or not the person feels that they live or have lived in New Zealand. The choice of which section to complete is up to the individual, and the answer may result in a person being misclassified – usually as a permanent migrant instead of a long-term migrant.

Of the 7,500 PLT arrivals in December 2007, there were 2,700 permanent migrants and 2,600 long-term visitors. A further 2,100 arrivals were returning long-term New Zealand residents.

For more information on the separate identification of PLT migrants, including data quality issues, see the [*External Migration: September 2003*](#) Hot Off The Press.

For technical information contact:

Ian Richards or Nick Thomson

Christchurch 03 964 8700

Email: demography@stats.govt.nz

Technical notes

Nature of data

The statistics in this release are based on final external migration counts. They relate to the number of movements of travellers, rather than to the number of travellers – that is, the multiple movements of individual people during a given reference period are each counted separately.

Data for country groupings

As of December 2000, the country groupings used in this release are consistent with the New Zealand Standard Classification of Countries 1999 (NZSCC 1999). Prior to this date, country groupings were based on earlier versions of the NZSCC.

New Zealand resident short-term departures

The commentaries relating to New Zealand resident short-term departures are based on the data for the country of main destination – that is, the country where each departing person intended to spend most of his or her time while away from New Zealand.

Changes in migrant category

In the preparation of migration statistics, the classification of each passenger is primarily determined by the passenger's response, on the arrival or departure card, to the question on intended or actual length of stay/absence. If the person's intention changes during the trip, then they may also change their migrant category. For example, if a person comes to New Zealand with the declared intention of settling permanently, but in fact returns overseas after a few months, then that person is classified as a permanent and long-term (PLT) migrant on arrival, but is later classified as a short-term visitor on departure. This is known as migration category jumping. Data users should recognise the limitations inherent in the information supplied by travellers.

Sampling accuracy

The statistics for short-term passenger movements by country (ie arrivals by country of last permanent residence and departures by country of main destination) are derived from a systematic random sample taken each month from arrival and departure cards, and are therefore subject to sampling errors. However, total counts for short-term arrivals and departures of overseas visitors and New Zealand residents are actual counts, which are not subject to sampling errors. Figures for PLT arrivals and departures are also actual counts and have no sampling errors.

INFOS database

All data in the Hot Off The Press tables are available through the INFOS database. Where feasible, the series identifiers are shown (see tables 1–5 and the footnotes for table 11). The series in tables 1, 2 and 3 are available back to January 1950, and the seasonally adjusted series in tables 4 and 5 are available back to January 1982. The seasonally adjusted migration series were all revised when new seasonal adjustment procedures were introduced in August 1998. Likewise, the seasonally adjusted figures from January 1996 onwards are now updated monthly.

Seasonally adjusted series

The purpose of seasonally adjusting a time series is to measure and remove the varying seasonal components (caused by regular events such as holidays) in the series. This makes the data for adjacent months more comparable. The X-12-ARIMA computer program is used to produce the seasonally adjusted estimates of migration. In addition, the seasonally adjusted figures are subject to revision each month. The size of these revisions is expected to be minimal, with the largest revisions occurring in the months immediately prior to the current month.

The change to a four-term school year in 1996 resulted in changes to the seasonal patterns of the New Zealand resident arrivals and departures series. As a result, the seasonal adjustment for the two series was unsatisfactory. To overcome this, a two-stage procedure was introduced in August 1998. The series prior to 1996 were seasonally adjusted separately and the values fixed, while the series from January 1996 onwards are now seasonally adjusted each month and revised if appropriate. Further information on the seasonally adjusted migration series, including information on the revision procedures, can be obtained from the Statistical Methods Business Unit, Statistics New Zealand, Christchurch, phone 03 964 8700, fax 03 964 8791.

Migration processing system

The current migration processing system, which incorporates scanning and image recognition technology, was first used to process the June 2004 arrival and departure cards. Classing (as overseas visitors, New Zealand residents or PLT migrants) and capture of the information required for the migration sample are done automatically for the majority of the cards. Operator intervention is only required for approximately one-tenth of the cards. The system is used only for the production of statistics.

Users should be aware of the changes to the processing system when comparing data for June 2004 onwards with data for earlier periods.

More information

For more information, follow the [link](#) from the technical notes of this release on the Statistics NZ website.

Copyright

Information obtained from Statistics NZ may be freely used, reproduced, or quoted unless otherwise specified. In all cases Statistics NZ must be acknowledged as the source.

Liability

While care has been used in processing, analysing and extracting information, Statistics NZ gives no warranty that the information supplied is free from error. Statistics NZ shall not be liable for any loss suffered through the use, directly or indirectly, of any information, product or service.

Timing

Timed statistical releases are delivered using postal and electronic services provided by third parties. Delivery of these releases may be delayed by circumstances outside the control of Statistics NZ. Statistics NZ accepts no responsibility for any such delays.

Next release ...

External Migration: December 2007 year will be released on 19 February 2008.

Statistics New Zealand: The first source of independent information for your key decisions.

Tables

The following tables can be downloaded from the Statistics New Zealand website in Excel format. If you do not have access to Excel, you may use the [Excel file viewer](#) to view, print and export the contents of the file.

List of tables

1. Arrivals by class, December 1997–2007
2. Departures by class, December 1997–2007
3. Net migration, December 1997–2007
4. Arrivals, seasonally adjusted, December 2006–2007
5. Departures, seasonally adjusted, December 2006–2007
6. Overseas visitor arrivals, by country of last permanent residence
7. New Zealand resident short-term departures, by country of main destination
8. Permanent and long-term arrivals, by country of last permanent residence
9. Permanent and long-term departures, by country of next permanent residence
10. Net permanent and long-term migration, by country of last/next permanent residence
11. Permanent and long-term migration, by country of citizenship

Table 1

Arrivals by Class
December 1997–2007

Period	Short-term arrivals		Permanent and long-term arrivals ⁽³⁾	All arrivals
	Overseas visitors ⁽¹⁾	NZ residents ⁽²⁾		
Series ref: <i>EMI</i>	<i>S1AAA</i>	<i>S1ACA</i>	<i>S1AE</i>	<i>S1AZA</i>
Month of December				
1997	183,830	59,272	5,862	248,964
1998	195,262	59,539	5,643	260,444
1999	205,390	68,099	6,529	280,018
2000	243,023	74,476	6,462	323,961
2001	239,807	69,374	8,725	317,906
2002	265,691	72,138	8,605	346,434
2003	297,280	87,671	7,839	392,790
2004	313,057	100,722	7,436	421,215
2005	307,061	103,834	7,658	418,553
2006	319,040	103,071	7,470	429,581
2007	317,259	112,743	7,454	437,456
Year ended December				
1997	1,497,225	1,115,119	67,636	2,679,980
1998	1,484,739	1,176,735	58,220	2,719,694
1999	1,607,478	1,209,682	59,743	2,876,903
2000	1,789,078	1,269,538	62,994	3,121,610
2001	1,909,809	1,302,811	81,094	3,293,714
2002	2,044,962	1,303,456	95,951	3,444,369
2003	2,106,229	1,381,900	92,660	3,580,789
2004	2,347,672	1,738,727	80,479	4,166,878
2005	2,382,950	1,879,759	78,963	4,341,672
2006	2,421,561	1,877,292	82,732	4,381,585
2007	2,465,680	1,983,537	82,572	4,531,789

(1) Intended length of stay in New Zealand is less than 12 months.

(2) Actual length of absence from New Zealand was less than 12 months.

(3) Permanent and long-term arrivals include overseas migrants who arrive in New Zealand intending to stay for a period of 12 months or more (or permanently), plus New Zealand residents returning after an absence of 12 months or more.

Table 2

Departures by Class
December 1997–2007

Period	Short-term departures		Permanent and long-term departures ⁽³⁾	All departures
	Overseas visitors ⁽¹⁾	NZ residents ⁽²⁾		
<i>Series ref: EMI</i>	S2AAA	S2ACA	S2AE	S2AZA
Month of December				
1997	125,972	104,031	5,290	235,293
1998	136,630	105,353	5,876	247,859
1999	144,039	98,799	6,294	249,132
2000	167,522	123,988	7,900	299,410
2001	165,847	118,125	5,321	289,293
2002	188,539	123,574	5,188	317,301
2003	210,864	147,882	6,288	365,034
2004	211,029	173,679	7,111	391,819
2005	209,816	188,434	6,519	404,769
2006	219,986	190,466	6,479	416,931
2007	213,503	199,693	7,560	420,756
Year ended December				
1997	1,493,588	1,132,200	60,012	2,685,800
1998	1,489,196	1,166,720	64,485	2,720,401
1999	1,600,317	1,184,922	68,772	2,854,011
2000	1,779,059	1,283,439	74,306	3,136,804
2001	1,901,699	1,287,296	71,368	3,260,363
2002	2,024,522	1,293,935	57,753	3,376,210
2003	2,102,794	1,374,408	57,754	3,534,956
2004	2,359,687	1,733,210	65,371	4,158,268
2005	2,402,252	1,871,801	71,992	4,346,045
2006	2,418,948	1,863,784	68,123	4,350,855
2007	2,466,850	1,980,215	77,081	4,524,146

(1) Actual length of stay in New Zealand was less than 12 months.

(2) Intended length of absence from New Zealand is less than 12 months.

(3) Permanent and long-term departures include New Zealand residents departing for an intended period of 12 months or more (or permanently), plus overseas visitors departing New Zealand after a stay of 12 months or more.

Table 3

Net Migration
December 1997–2007

Period	Net gain or loss from total migration	Net gain or loss from permanent and long-term migration ⁽¹⁾
<i>Series ref: EMI</i>	S3ZA	S3E
Month of December		
1997	13,671	572
1998	12,585	-233
1999	30,886	235
2000	24,551	-1,438
2001	28,613	3,404
2002	29,133	3,417
2003	27,756	1,551
2004	29,396	325
2005	13,784	1,139
2006	12,650	991
2007	16,700	-106
Year ended December		
1997	-5,820	7,624
1998	-707	-6,265
1999	22,892	-9,029
2000	-15,194	-11,312
2001	33,351	9,726
2002	68,159	38,198
2003	45,833	34,906
2004	8,610	15,108
2005	-4,373	6,971
2006	30,730	14,609
2007	7,643	5,491

(1) Permanent and long-term arrivals include overseas migrants who arrive in New Zealand intending to stay for a period of 12 months or more (or permanently), plus New Zealand residents returning after an absence of 12 months or more. Permanent and long-term departures include New Zealand residents departing for an intended period of 12 months or more (or permanently), plus overseas visitors departing New Zealand after a stay of 12 months or more.

Note:

- (a) Net gain or loss from migration is calculated by subtracting departures from arrivals.
- (b) A minus sign indicates an excess of departures over arrivals.

Table 4

Arrivals, Seasonally Adjusted ⁽¹⁾
December 2006–2007

Month	Short-term arrivals		Permanent and long-term arrivals ⁽⁴⁾	All arrivals
	Overseas visitors ⁽²⁾	NZ residents ⁽³⁾		
<i>Series ref: EMI</i>	<i>S12AS</i>	<i>S12CS</i>	<i>S12ES</i>	<i>S12ZS</i>
2006 Dec	204,900	155,880	6,690	367,460
2007 Jan	194,920	161,100	6,560	362,590
Feb	210,980	158,580	6,680	376,240
Mar	208,560	159,630	7,080	375,270
Apr	204,050	163,730	6,630	374,400
May	207,690	166,400	6,830	380,910
Jun	209,180	169,890	7,170	386,240
Jul	205,480	165,580	6,890	377,950
Aug	213,010	162,060	7,390	382,450
Sep	205,870	165,050	7,130	378,050
Oct	200,740	169,590	6,770	377,100
Nov	206,460	171,560	7,000	385,020
Dec	204,010	170,440	6,680	381,140

(1) All data has been revised (refer to technical notes of this release).

(2) Intended length of stay in New Zealand is less than 12 months.

(3) Actual length of absence from New Zealand was less than 12 months.

(4) Permanent and long-term arrivals include overseas migrants who arrive in New Zealand intending to stay for a period of 12 months or more (or permanently), plus New Zealand residents returning after an absence of 12 months or more.

Note: Data is independently rounded to the nearest 10.

Table 5

Departures, Seasonally Adjusted ⁽¹⁾
December 2006–2007

Month	Short-term departures		Permanent and long-term departures ⁽⁴⁾	All departures
	Overseas visitors ⁽²⁾	NZ residents ⁽³⁾		
<i>Series ref: EMI</i>	<i>S22AS</i>	<i>S22CS</i>	<i>S22ES</i>	<i>S22ZS</i>
2006 Dec	207,600	161,080	5,670	374,340
2007 Jan	202,330	161,260	6,150	369,750
Feb	204,960	158,730	6,140	369,830
Mar	209,000	160,040	6,470	375,500
Apr	206,700	159,590	6,380	372,670
May	206,200	174,460	6,400	387,060
Jun	203,960	171,060	6,550	381,570
Jul	208,820	155,880	6,400	371,100
Aug	208,230	165,620	6,640	380,490
Sep	208,110	165,320	6,450	379,880
Oct	204,190	167,880	6,500	378,570
Nov	204,780	168,840	6,520	380,150
Dec	201,750	168,120	6,660	376,530

(1) All data has been revised (refer to technical notes of this release).

(2) Actual length of stay in New Zealand was less than 12 months.

(3) Intended length of absence from New Zealand is less than 12 months.

(4) Permanent and long-term departures include New Zealand residents departing for an intended period of 12 months or more (or permanently), plus overseas visitors departing New Zealand after a stay of 12 months or more.

Note: Data is independently rounded to the nearest 10.

Table 6

Overseas Visitor Arrivals⁽¹⁾
By country of last permanent residence

Country of last permanent residence	Month of December		December quarter		Year ended December		Percentage change from 2006 ⁽²⁾		
	2006	2007	2006	2007	2006	2007	Month	Quarter	Year
Oceania	139,854	144,477	301,026	312,427	1,023,367	1,073,218	3.3	3.8	4.9
Australia	121,160	125,766	263,302	273,273	903,504	950,206	3.8	3.8	5.2
Cook Islands	1,274	1,323	3,320	3,485	10,457	10,782	3.8	5.0	3.1
Fiji	3,718	3,537	7,106	6,765	22,580	20,442	-4.9	-4.8	-9.5
French Polynesia	2,470	2,457	4,956	5,010	17,290	16,830	-0.5	1.1	-2.7
New Caledonia	1,404	1,431	3,054	3,099	11,244	11,772	1.9	1.5	4.7
Samoa	3,146	3,132	6,028	6,458	17,277	17,900	-0.4	7.1	3.6
Tonga	2,002	2,052	3,960	4,646	11,775	13,314	2.5	17.3	13.1
Asia	57,226	53,136	153,014	141,057	512,084	502,422	-7.1	-7.8	-1.9
China, PR	12,792	13,716	34,748	37,180	105,716	120,804	7.2	7.0	14.3
Hong Kong (SAR)	3,016	3,456	6,426	6,095	23,570	22,687	14.6	-5.2	-3.7
India	2,184	2,862	5,550	6,420	20,265	21,853	31.0	15.7	7.8
Indonesia	1,326	1,512	2,976	3,265	6,929	7,758	14.0	9.7	12.0
Japan	12,636	10,908	38,266	33,916	136,401	121,652	-13.7	-11.4	-10.8
Korea, Republic of	11,440	7,884	32,208	23,752	111,361	99,453	-31.1	-26.3	-10.7
Malaysia	2,444	2,538	6,580	6,478	19,990	19,716	3.8	-1.6	-1.4
Philippines	780	972	2,144	2,144	7,059	8,308	24.6	0.0	17.7
Singapore	5,304	5,292	10,650	10,176	28,168	26,836	-0.2	-4.5	-4.7
Taiwan	2,418	1,485	6,796	5,338	27,825	25,695	-38.6	-21.5	-7.7
Thailand	1,612	1,323	4,384	4,283	18,032	20,349	-17.9	-2.3	12.8
Europe	76,310	73,062	172,230	161,220	508,753	510,175	-4.3	-6.4	0.3
Austria	780	864	2,232	2,135	6,217	6,549	10.8	-4.3	5.3
Belgium	650	675	1,882	1,832	4,652	4,784	3.8	-2.7	2.8
Czech Republic	364	459	1,508	1,287	3,436	3,162	26.1	-14.7	-8.0
Denmark	1,742	1,836	3,722	3,607	10,522	10,832	5.4	-3.1	2.9
Finland	442	621	1,190	1,285	3,008	3,486	40.5	8.0	15.9
France	2,470	2,376	6,232	5,634	18,663	18,673	-3.8	-9.6	0.1
Germany	7,852	8,559	20,744	20,909	59,353	59,765	9.0	0.8	0.7
Ireland	2,548	2,700	6,024	6,113	19,583	20,792	6.0	1.5	6.2
Italy	1,040	1,107	2,800	2,638	8,010	8,217	6.4	-5.8	2.6
Netherlands	5,096	4,563	11,256	9,922	27,476	25,889	-10.5	-11.9	-5.8
Norway	520	540	1,180	1,223	3,896	3,839	3.8	3.6	-1.5
Russia	520	486	960	1,121	2,922	3,132	-6.5	16.8	7.2
Spain	910	918	3,044	2,967	8,064	8,867	0.9	-2.5	10.0
Sweden	2,054	2,241	4,364	4,629	12,026	12,075	9.1	6.1	0.4
Switzerland	2,470	2,592	5,506	5,306	14,536	14,387	4.9	-3.6	-1.0
United Kingdom	45,448	41,040	94,860	86,056	294,812	292,717	-9.7	-9.3	-0.7
Americas	34,034	33,831	85,030	84,928	295,176	290,431	-0.6	-0.1	-1.6
Argentina	702	594	1,340	1,350	4,053	4,600	-15.4	0.7	13.5
Brazil	1,248	1,269	2,546	2,730	8,901	10,446	1.7	7.2	17.4
Canada	5,694	6,561	14,428	15,369	45,955	47,792	15.2	6.5	4.0
Chile	468	540	1,326	1,246	4,015	4,062	15.4	-6.0	1.2
United States of America	25,064	23,841	63,476	61,700	225,629	216,027	-4.9	-2.8	-4.3
Other⁽³⁾	10,192	11,070	21,192	23,036	69,508	79,038	8.6	8.7	13.7
Israel	780	810	2,100	2,040	5,887	5,920	3.8	-2.9	0.6
South Africa	3,380	3,888	6,284	7,428	18,284	21,628	15.0	18.2	18.3
United Arab Emirates	572	702	1,122	1,218	4,351	4,903	22.7	8.6	12.7
Total⁽⁴⁾	319,040	317,259	735,592	726,019	2,421,561	2,465,680	-0.6	-1.3	1.8

(1) Intended length of stay in New Zealand is less than 12 months.

(2) Minus sign denotes a decrease.

(3) Includes not stated.

(4) These totals are actual counts and may differ from the sum of individual figures for different countries that are derived from samples.

Table 7

New Zealand Resident Short-term Departures⁽¹⁾
By country of main destination

Country of main destination	Month of December		December quarter		Year ended December		Percentage change from 2006 ⁽²⁾		
	2006	2007	2006	2007	2006	2007	Month	Quarter	Year
Oceania	106,320	108,779	301,814	320,133	1,162,752	1,222,473	2.3	6.1	5.1
Australia	86,040	84,196	246,746	257,384	929,361	977,866	-2.1	4.3	5.2
Cook Islands	3,600	4,433	11,556	13,101	45,181	51,643	23.1	13.4	14.3
Fiji	6,030	7,936	20,512	21,227	106,246	97,434	31.6	3.5	-8.3
French Polynesia	420	496	1,356	1,265	5,436	6,162	18.1	-6.7	13.4
New Caledonia	420	1,209	1,512	3,066	7,050	9,659	187.9	102.8	37.0
Norfolk Island	570	496	1,792	1,816	7,308	7,093	-13.0	1.3	-2.9
Samoa	5,520	5,053	10,044	10,877	31,327	36,727	-8.5	8.3	17.2
Tonga	2,220	2,573	4,092	5,421	15,025	16,560	15.9	32.5	10.2
Vanuatu	810	1,240	2,448	3,432	9,204	11,795	53.1	40.2	28.2
Asia	34,140	38,657	79,666	85,572	235,216	250,077	13.2	7.4	6.3
Cambodia	510	620	926	1,088	2,292	2,994	21.6	17.5	30.6
China, PR	7,770	9,455	18,924	20,337	51,202	57,926	21.7	7.5	13.1
Hong Kong (SAR)	3,450	3,193	7,116	6,942	18,934	18,726	-7.4	-2.4	-1.1
India	5,100	6,045	11,574	12,679	23,516	25,978	18.5	9.5	10.5
Indonesia	1,050	868	2,428	2,285	10,843	11,049	-17.3	-5.9	1.9
Japan	1,740	2,294	4,678	5,649	17,086	19,875	31.8	20.8	16.3
Korea, Republic of	3,150	3,255	6,166	5,859	14,919	15,002	3.3	-5.0	0.6
Malaysia	2,220	2,418	4,794	5,813	16,823	17,473	8.9	21.3	3.9
Philippines	1,830	1,767	2,714	2,762	6,960	7,493	-3.4	1.8	7.7
Singapore	1,020	1,488	3,698	4,461	16,712	15,068	45.9	20.6	-9.8
Sri Lanka	420	806	1,044	1,278	3,052	2,971	91.9	22.4	-2.7
Taiwan	1,920	2,201	3,922	4,254	11,320	11,110	14.6	8.5	-1.9
Thailand	2,340	2,542	7,462	7,517	29,080	30,611	8.6	0.7	5.3
Viet Nam	870	1,085	1,962	2,457	6,730	8,106	24.7	25.2	20.4
Europe	13,350	13,826	28,274	32,554	159,729	177,105	3.6	15.1	10.9
France	840	682	1,828	4,367	11,648	19,036	-18.8	138.9	63.4
Germany	840	930	1,958	2,170	10,403	9,631	10.7	10.8	-7.4
Italy	600	496	1,510	1,484	11,625	11,812	-17.3	-1.7	1.6
Netherlands	330	651	772	1,311	6,008	5,912	97.3	69.8	-1.6
United Kingdom	7,950	8,370	16,634	17,314	89,332	95,975	5.3	4.1	7.4
Americas	10,590	11,873	26,268	29,841	115,110	122,155	12.1	13.6	6.1
Canada	1,500	2,263	2,904	4,468	16,421	18,158	50.9	53.9	10.6
United States of America	7,710	8,277	19,722	22,081	87,012	92,384	7.4	12.0	6.2
Other⁽³⁾	25,980	26,474	54,138	58,849	188,521	205,822	1.9	8.7	9.2
South Africa	2,850	2,976	4,644	4,906	12,616	12,675	4.4	5.6	0.5
United Arab Emirates	570	682	1,298	1,533	3,904	4,150	19.6	18.1	6.3
Total⁽⁴⁾	190,466	199,693	490,467	527,278	1,863,784	1,980,215	4.8	7.5	6.2

(1) New Zealand resident departures for an intended period of less than 12 months.

(2) Minus sign denotes a decrease.

(3) Includes not stated.

(4) These totals are actual counts and may differ from the sum of individual figures for different countries that are derived from samples.

Table 8

Permanent and Long-term Arrivals⁽¹⁾
By country of last permanent residence

Country of last permanent residence	Month of December		December quarter		Year ended December		Percentage change from 2006 ⁽²⁾		
	2006	2007	2006	2007	2006	2007	Month	Quarter	Year
Oceania	2,373	2,460	5,213	5,241	19,499	19,548	3.7	0.5	0.3
Australia	1,650	1,665	3,633	3,690	13,306	13,636	0.9	1.6	2.5
Cook Islands	50	58	86	103	369	384	16.0	19.8	4.1
Fiji	267	340	637	737	2,590	2,786	27.3	15.7	7.6
Samoa	206	201	394	350	1,569	1,450	-2.4	-11.2	-7.6
Tonga	115	110	286	201	921	711	-4.3	-29.7	-22.8
Asia	1,273	1,427	4,249	4,500	20,487	22,939	12.1	5.9	12.0
China, PR	216	287	817	978	4,271	4,207	32.9	19.7	-1.5
Hong Kong (SAR)	37	32	137	98	616	605	-13.5	-28.5	-1.8
India	138	259	480	807	2,743	4,232	87.7	68.1	54.3
Japan	136	144	582	485	3,192	2,659	5.9	-16.7	-16.7
Korea, Republic of	142	113	376	320	1,896	2,068	-20.4	-14.9	9.1
Malaysia	72	74	225	250	1,413	1,572	2.8	11.1	11.3
Philippines	273	251	893	727	2,533	3,374	-8.1	-18.6	33.2
Singapore	62	51	127	141	612	631	-17.7	11.0	3.1
Taiwan	52	33	143	125	818	902	-36.5	-12.6	10.3
Thailand	55	48	204	189	920	1,004	-12.7	-7.4	9.1
Europe	2,755	2,454	9,079	8,017	30,262	26,888	-10.9	-11.7	-11.1
Czech Republic	12	10	133	104	291	265	-16.7	-21.8	-8.9
France	71	65	255	293	799	894	-8.5	14.9	11.9
Germany	119	127	547	561	2,283	2,447	6.7	2.6	7.2
Ireland	115	111	378	402	1,227	1,214	-3.5	6.3	-1.1
Netherlands	66	59	244	166	789	562	-10.6	-32.0	-28.8
United Kingdom	2,226	1,920	7,004	5,922	22,695	19,381	-13.7	-15.4	-14.6
Americas	571	589	1,665	1,693	6,422	6,550	3.2	1.7	2.0
Canada	127	132	442	484	1,615	1,569	3.9	9.5	-2.8
Chile	46	48	92	128	368	524	4.3	39.1	42.4
United States of America	323	329	969	888	3,636	3,540	1.9	-8.4	-2.6
Other⁽³⁾	498	524	1,360	1,683	6,062	6,647	5.2	23.8	9.7
Saudi Arabia	7	9	25	115	164	501	28.6	360.0	205.5
South Africa	206	214	529	558	1,850	2,127	3.9	5.5	15.0
United Arab Emirates	20	20	49	80	249	310	0.0	63.3	24.5
Total	7,470	7,454	21,566	21,134	82,732	82,572	-0.2	-2.0	-0.2

(1) Permanent and long-term arrivals include overseas migrants who arrive in New Zealand intending to stay for a period of 12 months or more (or permanently), plus New Zealand residents returning after an absence of 12 months or more.

(2) Minus sign denotes a decrease.

(3) Includes not stated.

Table 9

Permanent and Long-term Departures⁽¹⁾
By country of next permanent residence

Country of next permanent residence	Month of December		December quarter		Year ended December		Percentage change from 2006 ⁽²⁾		
	2006	2007	2006	2007	2006	2007	Month	Quarter	Year
Oceania	3,563	4,432	8,616	10,546	35,790	43,436	24.4	22.4	21.4
Australia	3,330	4,178	8,176	10,037	34,015	41,634	25.5	22.8	22.4
Cook Islands	43	69	82	127	339	392	60.5	54.9	15.6
Fiji	34	31	77	75	333	276	-8.8	-2.6	-17.1
Samoa	59	62	120	138	446	494	5.1	15.0	10.8
Tonga	25	24	50	41	229	194	-4.0	-18.0	-15.3
Asia	1,186	1,283	2,419	2,635	9,104	9,306	8.2	8.9	2.2
China, PR	227	215	586	557	2,443	2,391	-5.3	-4.9	-2.1
Hong Kong (SAR)	50	62	117	156	446	479	24.0	33.3	7.4
India	42	79	169	203	618	656	88.1	20.1	6.1
Japan	140	142	282	329	1,404	1,440	1.4	16.7	2.6
Korea, Republic of	439	466	644	667	1,825	1,861	6.2	3.6	2.0
Malaysia	55	75	154	195	462	524	36.4	26.6	13.4
Philippines	15	16	32	36	134	148	6.7	12.5	10.4
Singapore	65	65	115	133	383	437	0.0	15.7	14.1
Taiwan	24	39	58	86	326	321	62.5	48.3	-1.5
Thailand	62	62	113	110	385	376	0.0	-2.7	-2.3
Europe	995	988	2,606	2,736	15,627	16,448	-0.7	5.0	5.3
Czech Republic	1	4	11	28	77	135	300.0	154.5	75.3
France	30	40	90	115	448	538	33.3	27.8	20.1
Germany	52	39	142	125	773	797	-25.0	-12.0	3.1
Ireland	44	46	125	155	970	898	4.5	24.0	-7.4
Netherlands	12	26	45	67	267	348	116.7	48.9	30.3
United Kingdom	750	724	1,952	1,980	11,760	12,276	-3.5	1.4	4.4
Americas	432	481	1,144	1,192	4,758	4,769	11.3	4.2	0.2
Canada	129	162	356	416	1,440	1,542	25.6	16.9	7.1
Chile	11	14	26	32	132	156	27.3	23.1	18.2
United States of America	240	243	611	581	2,596	2,494	1.3	-4.9	-3.9
Other⁽³⁾	303	376	708	770	2,844	3,122	24.1	8.8	9.8
Saudi Arabia	4	20	18	36	83	124	400.0	100.0	49.4
South Africa	38	35	98	84	380	330	-7.9	-14.3	-13.2
United Arab Emirates	62	61	112	121	456	647	-1.6	8.0	41.9
Total	6,479	7,560	15,493	17,879	68,123	77,081	16.7	15.4	13.1

(1) Permanent and long-term departures include New Zealand residents departing for an intended period of 12 months or more (or permanently), plus overseas visitors departing New Zealand after a stay of 12 months or more.

(2) Minus sign denotes a decrease.

(3) Includes not stated.

Table 10

Net Permanent and Long-term Migration⁽¹⁾
By country of last/next permanent residence

Country of last/next permanent residence	Month of December ⁽²⁾		December quarter ⁽²⁾		Year ended December ⁽²⁾		Change from 2006 ⁽³⁾		
	2006	2007	2006	2007	2006	2007	Month	Quarter	Year
Oceania	-1,190	-1,972	-3,403	-5,305	-16,291	-23,888	-782	-1,902	-7,597
Australia	-1,680	-2,513	-4,543	-6,347	-20,709	-27,998	-833	-1,804	-7,289
Cook Islands	7	-11	4	-24	30	-8	-18	-28	-38
Fiji	233	309	560	662	2,257	2,510	76	102	253
Samoa	147	139	274	212	1,123	956	-8	-62	-167
Tonga	90	86	236	160	692	517	-4	-76	-175
Asia	87	144	1,830	1,865	11,383	13,633	57	35	2,250
China, PR	-11	72	231	421	1,828	1,816	83	190	-12
Hong Kong (SAR)	-13	-30	20	-58	170	126	-17	-78	-44
India	96	180	311	604	2,125	3,576	84	293	1,451
Japan	-4	2	300	156	1,788	1,219	6	-144	-569
Korea, Republic of	-297	-353	-268	-347	71	207	-56	-79	136
Malaysia	17	-1	71	55	951	1,048	-18	-16	97
Philippines	258	235	861	691	2,399	3,226	-23	-170	827
Singapore	-3	-14	12	8	229	194	-11	-4	-35
Taiwan	28	-6	85	39	492	581	-34	-46	89
Thailand	-7	-14	91	79	535	628	-7	-12	93
Europe	1,760	1,466	6,473	5,281	14,635	10,440	-294	-1,192	-4,195
Czech Republic	11	6	122	76	214	130	-5	-46	-84
France	41	25	165	178	351	356	-16	13	5
Germany	67	88	405	436	1,510	1,650	21	31	140
Ireland	71	65	253	247	257	316	-6	-6	59
Netherlands	54	33	199	99	522	214	-21	-100	-308
United Kingdom	1,476	1,196	5,052	3,942	10,935	7,105	-280	-1,110	-3,830
Americas	139	108	521	501	1,664	1,781	-31	-20	117
Canada	-2	-30	86	68	175	27	-28	-18	-148
Chile	35	34	66	96	236	368	-1	30	132
United States of America	83	86	358	307	1,040	1,046	3	-51	6
Other⁽⁴⁾	195	148	652	913	3,218	3,525	-47	261	307
Saudi Arabia	3	-11	7	79	81	377	-14	72	296
South Africa	168	179	431	474	1,470	1,797	11	43	327
United Arab Emirates	-42	-41	-63	-41	-207	-337	1	22	-130
Total	991	-106	6,073	3,255	14,609	5,491	-1,097	-2,818	-9,118

(1) Net permanent and long-term migration is derived by subtracting permanent and long-term departures from permanent and long-term arrivals. Permanent and long-term arrivals include overseas migrants who arrive in New Zealand intending to stay for a period of 12 months or more (or permanently), plus New Zealand residents returning after an absence of 12 months or more. Permanent and long-term departures include New Zealand residents departing for an intended period of 12 months or more (or permanently), plus overseas visitors departing New Zealand after a stay of 12 months or more.

(2) Minus sign indicates an excess of departures over arrivals.

(3) Minus sign denotes a decrease.

(4) Includes not stated.

Table 11

Permanent and Long-term Migration
By country of citizenship

Period	Country of citizenship								
	New Zealand			Non-New Zealand			Total		
	Arrivals ⁽¹⁾	Departures ⁽²⁾	Net ⁽³⁾	Arrivals ⁽¹⁾	Departures ⁽²⁾	Net ⁽³⁾	Arrivals ⁽¹⁾	Departures ⁽²⁾	Net ⁽³⁾
To/from all countries⁽⁴⁾									
Month of December									
1997	3,448	3,223	225	2,414	2,067	347	5,862	5,290	572
1998	3,156	3,942	-786	2,487	1,934	553	5,643	5,876	-233
1999	3,889	4,403	-514	2,640	1,891	749	6,529	6,294	235
2000	3,464	5,880	-2,416	2,998	2,020	978	6,462	7,900	-1,438
2001	4,062	3,448	614	4,663	1,873	2,790	8,725	5,321	3,404
2002	4,187	3,016	1,171	4,418	2,172	2,246	8,605	5,188	3,417
2003	4,183	3,447	736	3,656	2,841	815	7,839	6,288	1,551
2004	3,823	3,909	-86	3,613	3,202	411	7,436	7,111	325
2005	3,777	3,809	-32	3,881	2,710	1,171	7,658	6,519	1,139
2006	3,448	3,953	-505	4,022	2,526	1,496	7,470	6,479	991
2007	3,309	4,876	-1,567	4,145	2,684	1,461	7,454	7,560	-106
Year ended December									
1997	22,145	44,273	-22,128	45,491	15,739	29,752	67,636	60,012	7,624
1998	21,299	48,273	-26,974	36,921	16,212	20,709	58,220	64,485	-6,265
1999	22,551	53,215	-30,664	37,192	15,557	21,635	59,743	68,772	-9,029
2000	20,763	58,680	-37,917	42,231	15,626	26,605	62,994	74,306	-11,312
2001	23,465	56,031	-32,566	57,629	15,337	42,292	81,094	71,368	9,726
2002	25,417	42,112	-16,695	70,534	15,641	54,893	95,951	57,753	38,198
2003	27,691	38,859	-11,168	64,969	18,895	46,074	92,660	57,754	34,906
2004	25,069	43,190	-18,121	55,410	22,181	33,229	80,479	65,371	15,108
2005	24,165	49,201	-25,036	54,798	22,791	32,007	78,963	71,992	6,971
2006	24,018	47,616	-23,598	58,714	20,507	38,207	82,732	68,123	14,609
2007	22,969	55,645	-32,676	59,603	21,436	38,167	82,572	77,081	5,491
To/from Australia⁽⁵⁾									
Month of December									
1997	960	2,003	-1,043	339	493	-154	1,299	2,496	-1,197
1998	890	2,488	-1,598	370	520	-150	1,260	3,008	-1,748
1999	1,115	3,036	-1,921	409	527	-118	1,524	3,563	-2,039
2000	1,024	4,125	-3,101	362	531	-169	1,386	4,656	-3,270
2001	1,191	2,053	-862	469	530	-61	1,660	2,583	-923
2002	1,272	1,800	-528	427	410	17	1,699	2,210	-511
2003	1,351	2,244	-893	527	453	74	1,878	2,697	-819
2004	1,245	2,625	-1,380	511	527	-16	1,756	3,152	-1,396
2005	1,186	2,635	-1,449	529	553	-24	1,715	3,188	-1,473
2006	1,120	2,759	-1,639	530	571	-41	1,650	3,330	-1,680
2007	1,194	3,554	-2,360	471	624	-153	1,665	4,178	-2,513
Year ended December									
1997	7,224	22,522	-15,298	4,767	3,508	1,259	11,991	26,030	-14,039
1998	6,648	25,250	-18,602	3,958	3,219	739	10,606	28,469	-17,863
1999	6,802	30,246	-23,444	3,704	3,629	75	10,506	33,875	-23,369
2000	6,789	34,891	-28,102	3,791	3,357	434	10,580	38,248	-27,668
2001	7,974	32,528	-24,554	4,212	3,505	707	12,186	36,033	-23,847
2002	8,610	22,019	-13,409	4,408	3,051	1,357	13,018	25,070	-12,052
2003	9,365	21,378	-12,013	4,979	3,191	1,788	14,344	24,569	-10,225
2004	8,738	25,391	-16,653	5,478	3,547	1,931	14,216	28,938	-14,722
2005	8,145	30,600	-22,455	5,244	4,166	1,078	13,389	34,766	-21,377
2006	8,352	29,940	-21,588	4,954	4,075	879	13,306	34,015	-20,709
2007	8,481	37,038	-28,557	5,155	4,596	559	13,636	41,634	-27,998

(1) For a definition of permanent and long-term arrivals, see table 8.

(2) For a definition of permanent and long-term departures, see table 9.

(3) A minus sign indicates an excess of departures over arrivals.

(4) Figures to/from all countries are derived from the INFOS series S1EETA, S2EETA, S1EETZ and S2EETZ, eg arrivals of non-New Zealand citizens is S1EETZ minus S1EETA.

(5) Figures to/from Australia are derived from the INFOS series S1GEAUA, S2FEAUA, S1GEAUZ and S2FEAUZ.