

Embargoed until 10:45am – 19 October 2007

External Migration: September 2007

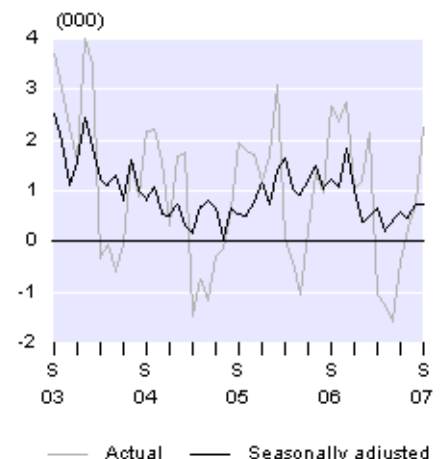
Highlights

- Visitor arrivals (168,800) were up 1 percent from September 2006 (166,500).
- There were more visitors from Australia (up 2,100) but fewer from Korea (down 1,700).
- New Zealand resident departures (208,500) were up 3 percent from September 2006 (201,900).
- There were more trips by New Zealand residents to France (up 4,000) and the United Kingdom (up 2,500).

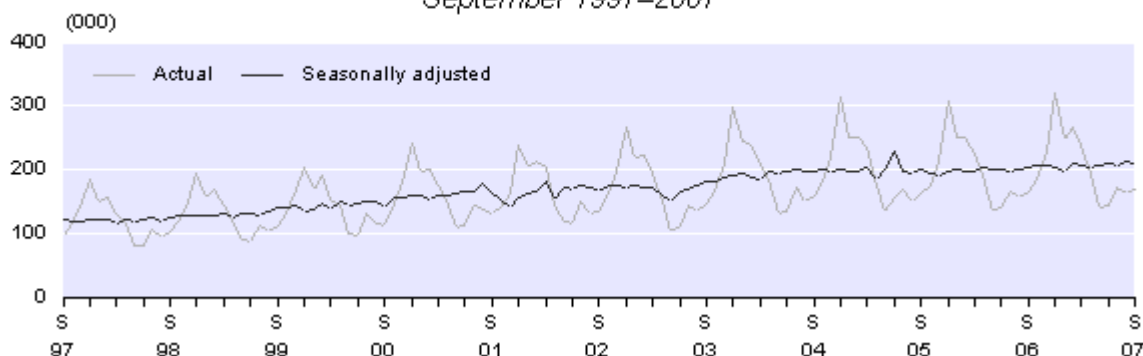
On a seasonally adjusted basis:

- Visitor arrivals fell 3 percent from August 2007.
- Overseas trips by New Zealand residents were unchanged.
- Permanent and long-term arrivals exceeded departures by 700.

Monthly Net Permanent and Long-term Migration
September 2003–2007



Monthly Visitor Arrivals
September 1997–2007



Geoff Bascand
Government Statistician

19 October 2007
ISSN 1178-0274

There is a companion Media Release published – [External Migration: September 2007](#).

Commentary

Visitor arrivals

There were 168,800 short-term overseas visitor arrivals to New Zealand in September 2007, an increase of 2,300 (1 percent) from September 2006. This is the highest number of visitor arrivals in any September month.

Seasonally adjusted visitor arrivals decreased by 3 percent between August and September 2007. This follows an increase of 4 percent between July and August 2007.

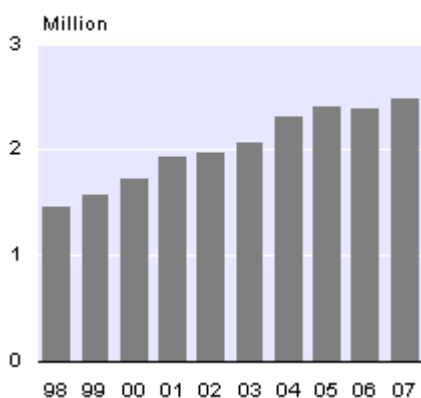
The number of intended stay days for all visitor arrivals in September 2007 was 3.15 million, down 2 percent from the 3.23 million intended stay days in September 2006. The average length of stay was 19 days in September 2007, and the median length of stay (half are shorter, and half longer, than this duration) was eight days.

There were 506,700 visitor arrivals in the September 2007 quarter, an increase of 17,500 from the 489,200 visitor arrivals in the September 2006 quarter.

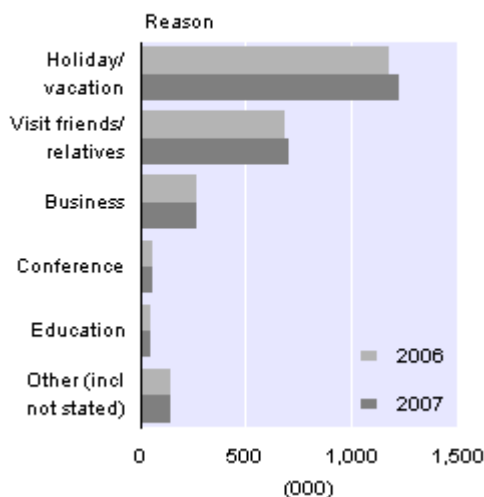
During the September 2007 year, there were 2.475 million visitor arrivals, up 91,300 (4 percent) from the September 2006 year. Half of these visitors were on holiday (1.223 million), 29 percent (707,000) were visiting friends and relatives, 11 percent (272,700) were on business, 3 percent (65,300) came for a conference, and a further 2 percent (53,000) came for educational purposes.

There were more arrivals for each purpose compared with the September 2006 year. The biggest increase was in arrivals for a holiday (up 48,200 or 4 percent), followed by visiting friends and relatives (up 25,600 or 4 percent), conferences and conventions (up 8,200 or 14 percent), business (up 7,300 or 3 percent), and education (up 2,300 or 4 percent).

Annual Visitor Arrivals
Year ended September



Visitor Arrivals by Reason
Year ended September



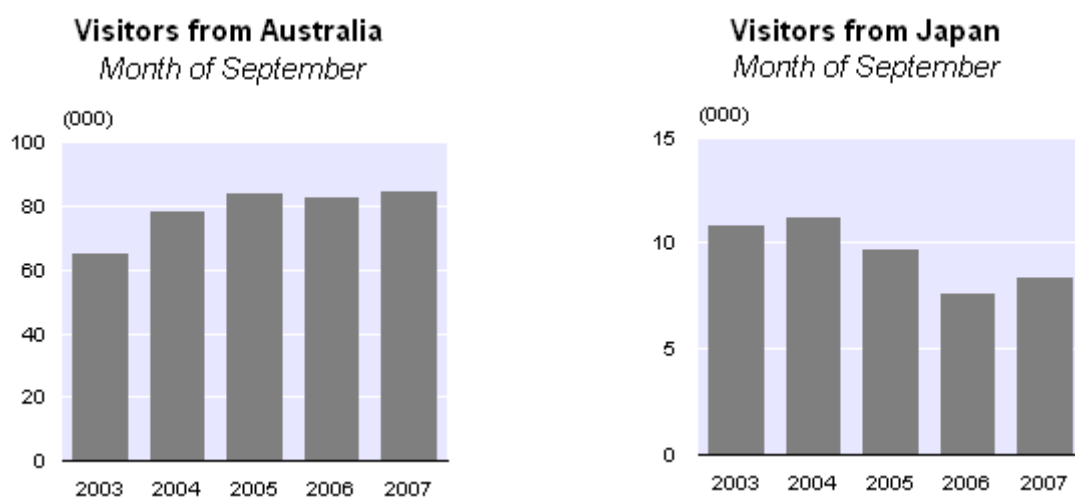
Note: Provisional international travel statistics, including weekly and four-weekly visitor arrival data, are available on the Statistics New Zealand website: www.stats.govt.nz. This data is updated each week with the most recently available information on visitor arrivals from 10 major source countries.

Visitors by source country

There were 84,500 visitor arrivals from Australia in September 2007, up 2,100 (3 percent) from September 2006. New Zealand is not the only country to benefit from an increase in Australian visitors. According to figures from the Australian Bureau of Statistics, there have been substantial increases in short-term overseas trips by Australian residents to a number of countries, including Thailand, Indonesia, Singapore and China, during the last year.

In September 2007, visitor arrivals from Japan increased to 8,300, up 700 (10 percent) from September 2006. This is the first month since June 2005 (when compared with the same month of the previous year) that there has been an increase in visitors from Japan. However, the September 2007 figure is still below figures for the September months from 1990 to 2005. The highest number of visitor arrivals from Japan recorded for a September month was 11,200 in 1997.

Fewer visitors arrived from Korea (down 1,700 or 20 percent) and the United Kingdom (down 500 or 5 percent) in September 2007.



In the year ended September 2007, there were more visitors from Oceania (up 60,800 or 6 percent) and Europe (up 23,100 or 5 percent) when compared with the September 2006 year. There was little change in visitor numbers from Asia and the Americas.

Australia provided the largest increase in visitor arrivals in the September 2007 year, up 56,200 (6 percent) to 940,200. Increases in visitor arrivals in the September 2007 year were also recorded from China (up 17,500 or 17 percent), the United Kingdom (up 12,200 or 4 percent), Canada (up 2,600 or 6 percent), South Africa (up 2,500 or 14 percent), and Thailand (up 2,500 or 14 percent).

Visitor arrivals from Japan numbered 126,000 in the September 2007 year, down 15,300 (11 percent) from the previous year. Visitor arrivals from the United States also decreased in the September 2007 year (down 6,500 or 3 percent).

Note: Detailed visitor data will be available in the September 2007 edition of *International Visitor Arrivals to New Zealand*, which can be ordered via the Statistics NZ website: www.stats.govt.nz.

New Zealand resident departures

New Zealand residents departed on 208,500 short-term overseas trips in September 2007, up 6,500 (3 percent) from the 201,900 departures in September 2006. This is the highest number of resident departures recorded for a September month.

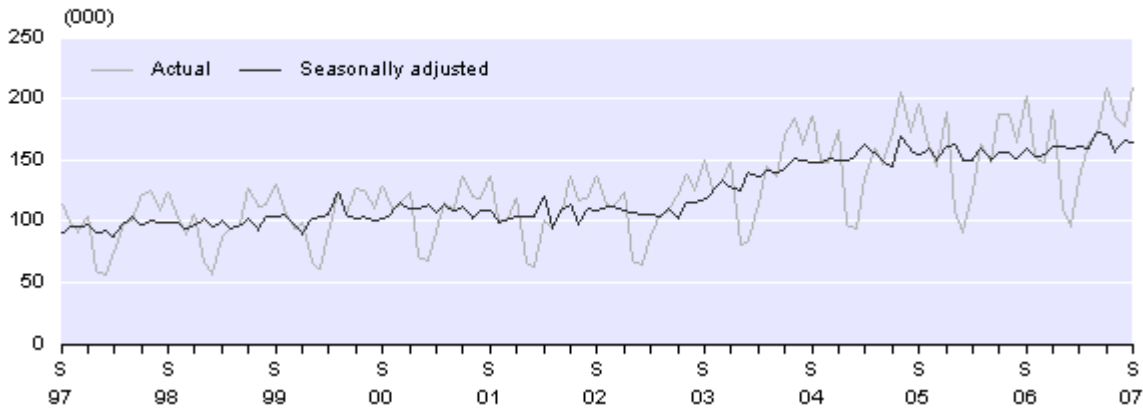
In September 2007, New Zealand residents departed on 99,800 trips to Australia, up less than 1 percent from the 99,400 trips to Australia in September 2006. Compared with September 2006, there were 4,000 more trips to France and 2,500 more trips to the United Kingdom in September 2007. These increases coincided with the 2007 Rugby World Cup, hosted by France, which opened on 7 September 2007. The combined increase in resident departures to the two countries was split equally between males and females, and half were aged 40 to 59 years.

Departures to Fiji in September 2007 were down 2,300 (17 percent) compared with September 2006, influenced by the political situation there.

On a seasonally adjusted basis, New Zealand resident departures were unchanged from August to September 2007. This series has been fluctuating in recent months, with a 9 percent decrease between June and July 2007 partially offset by a 6 percent increase between July and August 2007.

The number of intended days away for resident departures was up 5 percent, to 3.59 million days in September 2007. The average intended length of absence was 17 days in September 2007, the same number as in September 2006, and the median intended length of absence was 10 days.

Monthly New Zealand Resident Short-term Departures
September 1997–2007



There were 571,800 resident departures in the September 2007 quarter, an increase of 19,300 (4 percent) from the total of 552,500 in the September 2006 quarter.

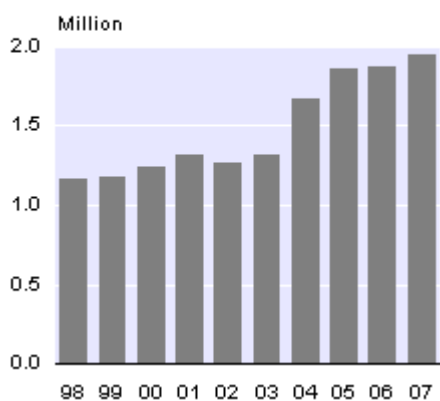
In the September 2007 year, there were 1.943 million resident departures, up 76,100 (4 percent) from the September 2006 year. There were more resident departures to Oceania (up 43,300 or 4 percent), Europe (up 12,900 or 8 percent), Asia (up 9,200 or 4 percent) and the Americas (up 3,600 or 3 percent), when compared with the September 2006 year.

The largest increase was in resident departures to Australia (up 40,900 or 4 percent). Australia was the destination for half of New Zealand residents departing on short-term trips in the September 2007 year. There were also more trips to Samoa (up 6,500 or 22 percent), the Cook Islands (up 5,900 or 13 percent), France (up 5,300 or 48 percent), China (up 5,100 or 10 percent) and the United Kingdom (up 4,700 or 5 percent). Most of the increase in departures to France and the United Kingdom occurred in the September month. However, the 96,700 trips to Fiji in the year ended September 2007 were down 14,100 (13 percent) from the September 2006 year.

In the September 2007 year, much of the increase in trips by New Zealand residents was for the purpose of visiting friends and relatives (up 40,100 or 7 percent). There were also more trips for a holiday (up 20,200 or 3 percent), for business (up 9,400 or 3 percent) and to attend a conference (up 1,600 or 3 percent). Trips for education decreased by 1,000 (4 percent).

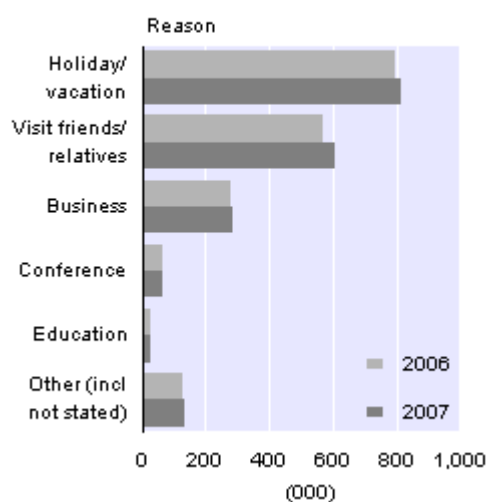
Annual Resident Departures

Year ended September



Resident Departures by Reason

Year ended September



Note: Provisional international travel statistics, including weekly and four-weekly resident departure data, are available on the Statistics NZ website: www.stats.govt.nz. This data is updated each week with the most recently available information on resident departures to 10 major destination countries.

Permanent and long-term migration

Definition

Permanent and long-term (PLT) arrivals include people who arrive in New Zealand intending to stay for a period of 12 months or more (or permanently), plus New Zealand residents returning after an absence of 12 months or more. Included in the former group are people with New Zealand residency, as well as students and holders of work permits. PLT departures include New Zealand residents departing for an intended period of 12 months or more (or permanently), plus overseas visitors departing New Zealand after a stay of 12 months or more.

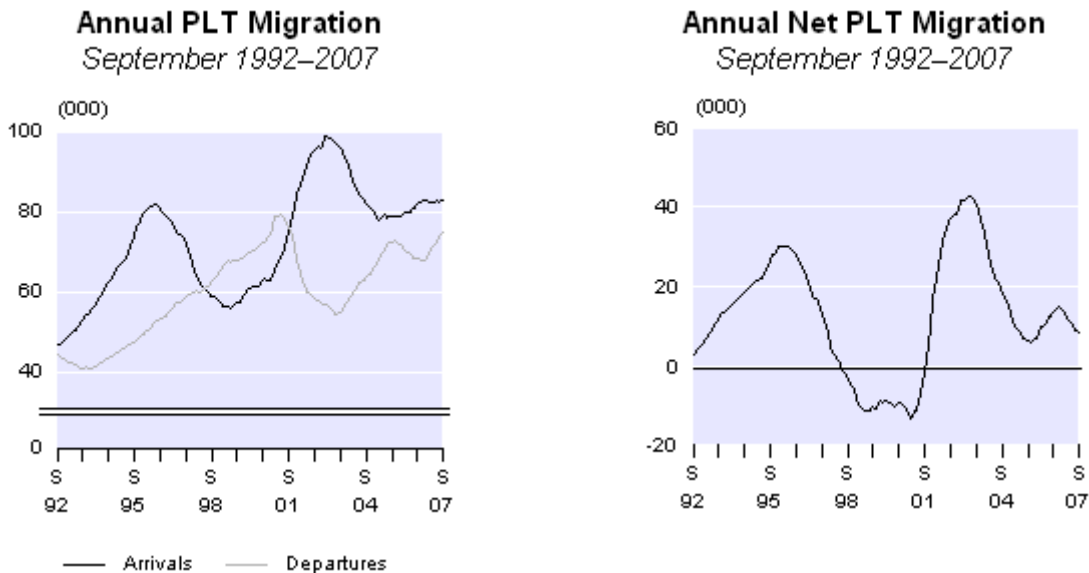
Analysis

PLT arrivals exceeded departures by 2,200 in September 2007, compared with an excess of 2,700 arrivals over departures in September 2006. The decrease in the net flow was mainly due to 400 more New Zealand citizen departures.

On a seasonally adjusted basis, there was a net PLT inflow of 700 in September 2007. This follows seasonally adjusted inflows of 500 in July 2007 and 800 in August 2007.

In September 2007, there was a net outflow of 1,800 PLT migrants to Australia, up from the outflow of 1,500 in September 2006. There was a net inflow of 1,300 from the United Kingdom and 300 each from the Philippines, India and Fiji.

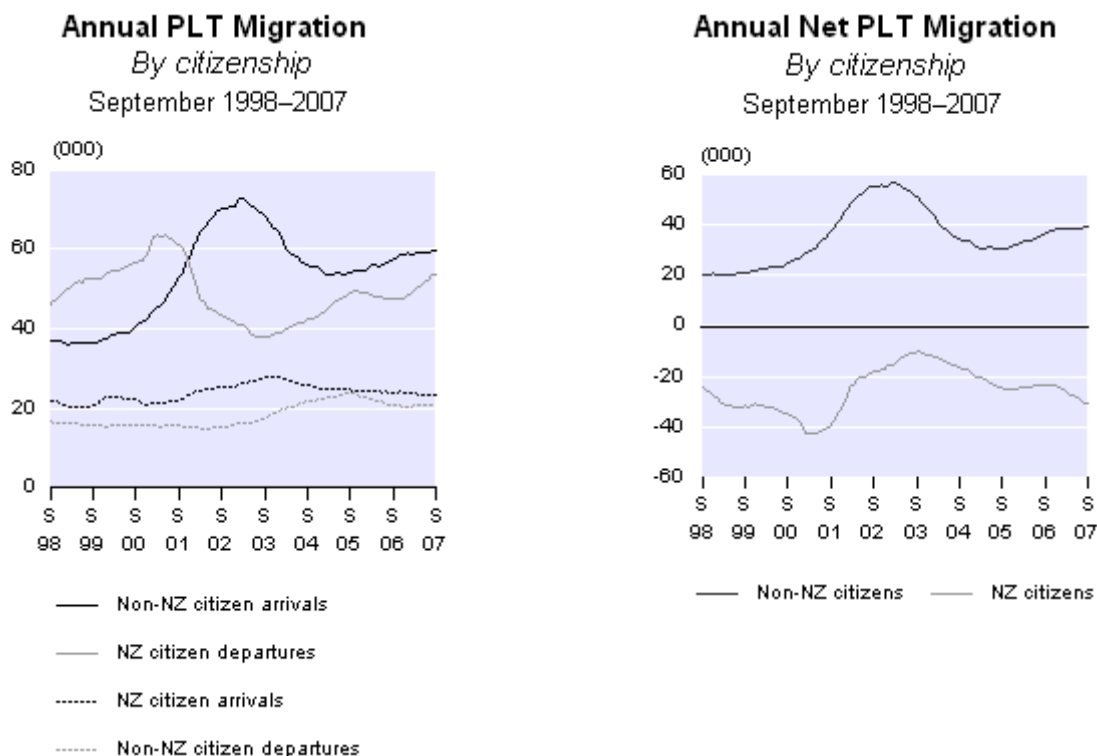
In the year ended September 2007, there were 83,000 PLT arrivals, up 1,400 (2 percent) from the September 2006 year. Over the same period there were 74,700 PLT departures, up 6,300 (9 percent). As a result, net PLT migration was 8,300 in the September 2007 year, down from 13,200 in the September 2006 year.



The net PLT migration gain in the year ended September 2007 (8,300) is below the annual average of 12,200 recorded for the December years from 1990–2006. There was substantial variation in net PLT migration within this 17-year period. The net gain peaked at 30,200 in the April 1996 year and again at 42,500 in the May 2003 year. Net outflows were generally experienced during 1998–2001, the highest being a net loss of 13,200 people in the February 2001 year.

In the September 2007 year, PLT arrivals of non-New Zealand citizens were up 2,200 and PLT arrivals of New Zealand citizens were down 800. There were 6,100 more PLT departures of New Zealand citizens and 100 more PLT departures of non-New Zealand citizens. Changes in non-New Zealand citizen departures are often related to changes in non-New Zealand citizen arrivals a few years earlier. Similarly, changes in New Zealand citizen arrivals are often related to changes in New Zealand citizen departures a few years earlier.

There was a net outflow of 30,500 New Zealand citizens in the year ended September 2007. Non-New Zealand citizens recorded a net inflow of 38,800 in the September 2007 year.



In the year ended September 2007, there was a net PLT inflow of 8,200 from the United Kingdom, down from 11,000 the previous year. The Philippines was the second largest source of net PLT migration to New Zealand in the September 2007 year, increasing from a net inflow of 600 in 2005, to 1,800 in 2006, and 3,400 in 2007. An article, *Permanent and long-term migration from the Philippines*, is available on the [International Travel and Migration Articles](#) page of the Statistics NZ website. There were also net inflows from India (3,300) and Fiji (2,400) in the September 2007 year.

The net PLT outflow to Australia was 26,200 in the September 2007 year, compared with 20,600 in the September 2006 year. The highest September year net outflow to Australia in the past decade was 28,400 in 2001.

Split PLT data

Statistics NZ began separately identifying permanent arrivals from long-term arrivals in July 2003 (departing migrants are also separately identified). Within the long-term group, a further distinction is made between overseas visitors coming to stay in New Zealand for 12 months or more (long-term overseas visitors) and New Zealand residents returning after an overseas stay of 12 months or more (long-term New Zealand residents).

The classification of a person as a permanent or long-term migrant depends on that person's responses to the questions on the arrival and departure cards. Both cards require completion of one of two sections, depending on whether or not the person feels that they live or have lived in New Zealand. The choice of which section to complete is up to the individual, and the answer may result in a person being misclassified – usually as a permanent migrant instead of a long-term migrant.

Of the 7,500 PLT arrivals in September 2007, there were 2,700 permanent migrants and 3,300 long-term visitors. A further 1,500 arrivals were returning long-term New Zealand residents.

For more information on the separate identification of PLT migrants, including data quality issues, see the *External Migration: September 2003* Hot Off The Press.

Additional information in table 11

PLT migration to and from Australia by country of citizenship (New Zealand, non-New Zealand and total) has been added to table 11 of the Excel tables accompanying this release. This is in addition to data on PLT migration to and from all countries by country of citizenship.

Australia is an important source and destination country for PLT migrants to and from New Zealand. Over half of the permanent and long-term departures from New Zealand in the September 2007 year were to Australia. Of permanent and long-term departures of New Zealand citizens, two-thirds were to Australia.

Australia was also New Zealand's second largest source of permanent and long-term arrivals in the September 2007 year, behind the United Kingdom. New Zealand citizens accounted for almost two-thirds of permanent and long-term arrivals from Australia.

Nine million arrivals and departures

There were more than nine million passenger movements across New Zealand's border in the September 2007 year (comprising 4.507 million arrivals and 4.495 million departures). The change from eight to nine million passenger movements took just over three years, with eight million arrivals and departures being reached in the August 2004 year. The increase from eight to nine million was slower than that from seven to eight million, which took just nine months. Fifty years ago, in 1957, there were 145,500 passenger movements in and out of New Zealand, a number which is now reached in less than a week. The first million mark was reached in the August 1973 year, which increased to five million in the June 1996 year.

Almost two-thirds of the increase from eight to nine million movements (616,600) was attributable to an increase in trips by New Zealand residents. Between the August 2004 and September 2007 years, there was a considerable increase in short-term visits to Australia, as well as the United Kingdom, China, Thailand, India, the Cook Islands and the United States.

Visitors from Australia were the most important component of the increase in overseas visitor movements, followed by visitors from China. However, this gain was negated by a drop in visitors from Japan. There were also gains from the United Kingdom and other countries in Europe.

Passenger class	Total arrivals and departures		Change 2004–2007	
	Year ended August 2004	Year ended September 2007	Number	Share (percent)
New Zealand residents	3,275,100	3,891,700	616,600	63.8
Overseas visitors	4,614,900	4,952,600	337,700	34.9
Permanent & long-term	145,700	157,700	12,000	1.2
Total	8,035,700	9,002,000	966,300	100.0

For technical information contact:
 Ian Richards or Nick Thomson
 Christchurch 03 964 8700
 Email: demography@stats.govt.nz

Technical notes

Nature of data

The statistics in this release are based on final external migration counts. They relate to the number of movements of travellers, rather than to the number of travellers – that is, the multiple movements of individual people during a given reference period are each counted separately.

Data for country groupings

As of December 2000, the country groupings used in this release are consistent with the New Zealand Standard Classification of Countries 1999 (NZSCC 1999). Prior to this date, country groupings were based on earlier versions of the NZSCC.

New Zealand resident short-term departures

The commentaries relating to New Zealand resident short-term departures are based on the data for the country of main destination – that is, the country where each departing person intended to spend most of his or her time while away from New Zealand.

Changes in migrant category

In the preparation of migration statistics, the classification of each passenger is primarily determined by the passenger's response, on the arrival or departure card, to the question on intended or actual length of stay/absence. If the person's intention changes during the trip, then they may also change their migrant category. For example, if a person comes to New Zealand with the declared intention of settling permanently, but in fact returns overseas after a few months, then that person is classified as a permanent and long-term (PLT) migrant on arrival, but is later classified as a short-term visitor on departure. This is known as migration category jumping. Data users should recognise the limitations inherent in the information supplied by travellers.

Sampling accuracy

The statistics for short-term passenger movements by country (ie arrivals by country of last permanent residence and departures by country of main destination) are derived from a systematic random sample taken each month from arrival and departure cards, and are therefore subject to sampling errors. However, total counts for short-term arrivals and departures of overseas visitors and New Zealand residents are actual counts, which are not subject to sampling errors. Figures for PLT arrivals and departures are also actual counts and have no sampling errors.

INFOS database

All data in the Hot Off The Press tables are available through the INFOS database. Where feasible, the series identifiers are shown (see tables 1–5 and the footnotes for table 11). The series in tables 1, 2 and 3 are available back to January 1950, and the seasonally adjusted series in tables 4 and 5 are available back to January 1982. The seasonally adjusted migration series were all revised when new seasonal adjustment procedures were introduced in August 1998. Likewise, the seasonally adjusted figures from January 1996 onwards are now updated monthly.

Seasonally adjusted series

The purpose of seasonally adjusting a time series is to measure and remove the varying seasonal components (caused by regular events such as holidays) in the series. This makes the data for adjacent months more comparable. The X-12-ARIMA computer program is used to produce the seasonally adjusted estimates of migration. In addition, the seasonally adjusted figures are subject to revision each month. The size of these revisions is expected to be minimal, with the largest revisions occurring in the months immediately prior to the current month.

The change to a four-term school year in 1996 resulted in changes to the seasonal patterns of the New Zealand resident arrivals and departures series. As a result, the seasonal adjustment for the two series was unsatisfactory. To overcome this, a two-stage procedure was introduced in August 1998. The series prior to 1996 were seasonally adjusted separately and the values fixed, while the series from January 1996 onwards are now seasonally adjusted each month and revised if appropriate. Further information on the seasonally adjusted migration series, including information on the revision procedures, can be obtained from the Statistical Methods Business Unit, Statistics New Zealand, Christchurch, phone 03 964 8700, fax 03 964 8791.

Migration processing system

The current migration processing system, which incorporates scanning and image recognition technology, was first used to process the June 2004 arrival and departure cards. Classing (as overseas visitors, New Zealand residents or PLT migrants) and capture of the information required for the migration sample are done automatically for the majority of the cards. Operator intervention is only required for approximately one-tenth of the cards. The system is used only for the production of statistics.

Users should be aware of the changes to the processing system when comparing data for June 2004 onwards with data for earlier periods.

More information

For more information, follow the [link](#) from the technical notes of this release on the Statistics NZ website.

Copyright

Information obtained from Statistics NZ may be freely used, reproduced, or quoted unless otherwise specified. In all cases Statistics NZ must be acknowledged as the source.

Liability

While care has been used in processing, analysing and extracting information, Statistics NZ gives no warranty that the information supplied is free from error. Statistics NZ shall not be liable for any loss suffered through the use, directly or indirectly, of any information, product or service.

Timing

Timed statistical releases are delivered using postal and electronic services provided by third parties. Delivery of these releases may be delayed by circumstances outside the control of Statistics NZ. Statistics NZ accepts no responsibility for any such delays.

Next release ...

External Migration: October 2007 will be released on 20 November 2007.

Statistics New Zealand: The first source of independent information for your key decisions.

Tables

The following tables can be downloaded from the Statistics New Zealand website in Excel format. If you do not have access to Excel, you may use the [Excel file viewer](#) to view, print and export the contents of the file.

List of tables

1. Arrivals by class, September 1997–2007
2. Departures by class, September 1997–2007
3. Net migration, September 1997–2007
4. Arrivals, seasonally adjusted, September 2006–2007
5. Departures, seasonally adjusted, September 2006–2007
6. Overseas visitor arrivals, by country of last permanent residence
7. New Zealand resident short-term departures, by country of main destination
8. Permanent and long-term arrivals, by country of last permanent residence
9. Permanent and long-term departures, by country of next permanent residence
10. Net permanent and long-term migration, by country of last/next permanent residence
11. Permanent and long-term migration, by country of citizenship

Table 1

Arrivals by Class
September 1997–2007

Period	Short-term arrivals		Permanent and long-term arrivals ⁽³⁾	All arrivals
	Overseas visitors ⁽¹⁾	NZ residents ⁽²⁾		
<i>Series ref: EMI</i>	<i>S1AAA</i>	<i>S1ACA</i>	<i>S1AE</i>	<i>S1AZA</i>
Month of September				
1997	98,746	103,402	4,739	206,887
1998	102,642	112,546	4,515	219,703
1999	114,310	125,381	4,914	244,605
2000	113,750	113,078	5,666	232,494
2001	131,194	131,246	7,669	270,109
2002	136,085	127,919	8,106	272,110
2003	148,420	141,993	7,401	297,814
2004	161,182	176,907	6,725	344,814
2005	163,785	167,194	6,733	337,712
2006	166,531	177,266	7,442	351,239
2007	168,838	186,796	7,478	363,112
Year ended September				
1997	1,537,496	1,090,704	71,868	2,700,068
1998	1,457,285	1,166,520	58,900	2,682,705
1999	1,566,475	1,195,459	57,279	2,819,213
2000	1,724,745	1,243,242	62,803	3,030,790
2001	1,935,228	1,327,948	74,702	3,337,878
2002	1,964,777	1,283,473	95,417	3,343,667
2003	2,058,116	1,338,882	95,540	3,492,538
2004	2,307,470	1,679,636	81,823	4,068,929
2005	2,400,017	1,846,375	78,939	4,325,331
2006	2,383,940	1,880,612	81,641	4,346,193
2007	2,475,253	1,948,304	83,004	4,506,561

(1) Intended length of stay in New Zealand is less than 12 months.

(2) Actual length of absence from New Zealand was less than 12 months.

(3) Permanent and long-term arrivals include overseas migrants who arrive in New Zealand intending to stay for a period of 12 months or more (or permanently), plus New Zealand residents returning after an absence of 12 months or more.

Note: Data is independently rounded to the nearest 10.

Table 2

Departures by Class
September 1997–2007

Period	Short-term departures		Permanent and long-term departures ⁽³⁾	All departures
	Overseas visitors ⁽¹⁾	NZ residents ⁽²⁾		
<i>Series ref: EMI</i>	S2AAA	S2ACA	S2AE	S2AZA
Month of September				
1997	84,089	113,220	3,989	201,298
1998	87,950	123,036	4,786	215,772
1999	98,710	130,149	4,606	233,465
2000	109,121	128,051	4,854	242,026
2001	118,520	136,745	4,157	259,422
2002	116,252	136,282	3,687	256,221
2003	129,901	149,515	3,699	283,115
2004	140,082	186,305	4,560	330,947
2005	147,703	195,819	4,781	348,303
2006	146,239	201,928	4,780	352,947
2007	152,443	208,467	5,237	366,147
Year ended September				
1997	1,515,919	1,115,258	58,969	2,690,146
1998	1,463,700	1,163,222	62,763	2,689,685
1999	1,570,316	1,180,806	67,823	2,818,945
2000	1,739,321	1,238,055	72,331	3,049,707
2001	1,913,889	1,313,262	76,393	3,303,544
2002	1,946,724	1,265,323	58,307	3,270,354
2003	2,068,495	1,317,774	55,103	3,441,372
2004	2,330,409	1,667,147	64,066	4,061,622
2005	2,417,628	1,850,250	72,534	4,340,412
2006	2,387,153	1,867,268	68,441	4,322,862
2007	2,477,367	1,943,404	74,695	4,495,466

(1) Actual length of stay in New Zealand was less than 12 months.

(2) Intended length of absence from New Zealand is less than 12 months.

(3) Permanent and long-term departures include New Zealand residents departing for an intended period of 12 months or more (or permanently), plus overseas visitors departing New Zealand after a stay of 12 months or more.

Note: Data is independently rounded to the nearest 10.

Table 3

Net Migration
September 1997–2007

Period	Net gain or loss from total migration	Net gain or loss from permanent and long-term migration ⁽¹⁾
<i>Series ref: EMI</i>	S3ZA	S3E
Month of September		
1997	5,589	750
1998	3,931	-271
1999	11,140	308
2000	-9,532	812
2001	10,687	3,512
2002	15,889	4,419
2003	14,699	3,702
2004	13,867	2,165
2005	-10,591	1,952
2006	-1,708	2,662
2007	-3,035	2,241
Year ended September		
1997	9,922	12,899
1998	-6,980	-3,863
1999	268	-10,544
2000	-18,917	-9,528
2001	34,334	-1,691
2002	73,313	37,110
2003	51,166	40,437
2004	7,307	17,757
2005	-15,081	6,405
2006	23,331	13,200
2007	11,095	8,309

(1) Permanent and long-term arrivals include overseas migrants who arrive in New Zealand intending to stay for a period of 12 months or more (or permanently), plus New Zealand residents returning after an absence of 12 months or more. Permanent and long-term departures include New Zealand residents departing for an intended period of 12 months or more (or permanently), plus overseas visitors departing New Zealand after a stay of 12 months or more.

Note:

- (a) Data is independently rounded to the nearest 10.
- (b) Net gain or loss from migration is calculated by subtracting departures from arrivals.
- (c) A minus sign indicates an excess of departures over arrivals.

Table 4

Arrivals, Seasonally Adjusted ⁽¹⁾
September 2006–2007

Month	Short-term arrivals		Permanent and long-term arrivals ⁽⁴⁾	All arrivals
	Overseas visitors ⁽²⁾	NZ residents ⁽³⁾		
<i>Series ref: EMI</i>	<i>S12AS</i>	<i>S12CS</i>	<i>S12ES</i>	<i>S12ZS</i>
2006 Sep	203,580	154,650	7,170	365,390
Oct	205,910	160,910	7,090	373,910
Nov	206,880	158,840	7,100	372,830
Dec	204,040	155,010	6,630	365,680
2007 Jan	197,840	160,790	6,540	365,170
Feb	210,590	158,610	6,660	375,850
Mar	208,280	159,350	7,150	374,790
Apr	203,800	163,650	6,600	374,060
May	207,620	166,380	6,810	380,820
Jun	209,220	169,930	7,170	386,320
Jul	205,700	165,530	6,910	378,140
Aug	213,420	161,700	7,420	382,540
Sep	206,500	164,210	7,190	377,900

(1) All data has been revised (refer to technical notes of this release).

(2) Intended length of stay in New Zealand is less than 12 months.

(3) Actual length of absence from New Zealand was less than 12 months.

(4) Permanent and long-term arrivals include overseas migrants who arrive in New Zealand intending to stay for a period of 12 months or more (or permanently), plus New Zealand residents returning after an absence of 12 months or more.

Note: Data is independently rounded to the nearest 10.

Table 5

Departures, Seasonally Adjusted ⁽¹⁾
September 2006–2007

Month	Short-term departures		Permanent and long-term departures ⁽⁴⁾	All departures
	Overseas visitors ⁽²⁾	NZ residents ⁽³⁾		
<i>Series ref: EMI</i>	<i>S22AS</i>	<i>S22CS</i>	<i>S22ES</i>	<i>S22ZS</i>
2006 Sep	200,750	159,810	5,920	366,480
Oct	206,540	152,190	5,990	364,730
Nov	205,880	155,080	5,250	366,210
Dec	206,790	161,270	5,610	373,680
2007 Jan	202,380	161,400	6,160	369,940
Feb	205,030	158,940	6,150	370,120
Mar	209,030	160,260	6,490	375,770
Apr	206,640	159,690	6,400	372,740
May	206,100	173,060	6,430	385,590
Jun	203,830	171,260	6,580	381,670
Jul	208,970	156,090	6,430	371,490
Aug	209,280	165,380	6,660	381,330
Sep	208,850	164,840	6,470	380,160

(1) All data has been revised (refer to technical notes of this release).

(2) Actual length of stay in New Zealand was less than 12 months.

(3) Intended length of absence from New Zealand is less than 12 months.

(4) Permanent and long-term departures include New Zealand residents departing for an intended period of 12 months or more (or permanently), plus overseas visitors departing New Zealand after a stay of 12 months or more.

Note: Data is independently rounded to the nearest 10.

Table 6

Overseas Visitor Arrivals⁽¹⁾
By country of last permanent residence

Country of last permanent residence	Month of September		September quarter		Year ended September		Percentage change from 2006 ⁽²⁾		
	2006	2007	2006	2007	2006	2007	Month	Quarter	Year
Oceania	91,392	93,702	244,257	264,750	1,000,990	1,061,817	2.5	8.4	6.1
Australia	82,404	84,525	218,454	238,865	884,056	940,235	2.6	9.3	6.4
Cook Islands	861	897	2,310	2,295	10,417	10,617	4.2	-0.6	1.9
Fiji	1,575	1,426	4,839	4,124	21,889	20,783	-9.5	-14.8	-5.1
French Polynesia	882	1,058	3,354	3,386	17,921	16,776	20.0	1.0	-6.4
New Caledonia	1,050	989	2,544	2,707	10,872	11,727	-5.8	6.4	7.9
Samoa	1,512	1,334	3,783	3,582	17,182	17,470	-11.8	-5.3	1.7
Tonga	861	943	2,535	2,773	11,109	12,628	9.5	9.4	13.7
Asia	34,188	33,258	109,767	105,088	513,135	514,379	-2.7	-4.3	0.2
China, PR	8,106	8,234	23,211	24,982	100,844	118,372	1.6	7.6	17.4
Hong Kong (SAR)	1,365	1,265	5,361	4,829	24,256	23,018	-7.3	-9.9	-5.1
India	1,743	1,403	3,768	3,805	20,210	20,983	-19.5	1.0	3.8
Indonesia	378	322	1,176	1,226	7,082	7,469	-14.8	4.3	5.5
Japan	7,602	8,326	28,782	27,132	141,291	126,002	9.5	-5.7	-10.8
Korea, Republic of	8,253	6,601	25,317	21,247	109,244	107,909	-20.0	-16.1	-1.2
Malaysia	1,281	1,127	3,978	3,625	21,258	19,818	-12.0	-8.9	-6.8
Philippines	420	621	1,338	1,695	6,623	8,308	47.9	26.7	25.4
Singapore	1,680	1,518	4,854	4,690	29,300	27,310	-9.6	-3.4	-6.8
Taiwan	1,764	1,610	6,792	6,000	28,585	27,153	-8.7	-11.7	-5.0
Thailand	1,134	1,702	3,552	4,202	17,998	20,450	50.1	18.3	13.6
Europe	21,840	21,482	68,433	69,918	498,123	521,185	-1.6	2.2	4.6
Austria	231	345	984	1,099	6,083	6,646	49.4	11.7	9.3
France	798	851	3,378	3,249	18,314	19,271	6.6	-3.8	5.2
Germany	2,919	2,921	8,001	8,521	58,807	59,600	0.1	6.5	1.3
Ireland	1,092	1,127	3,843	4,271	19,352	20,703	3.2	11.1	7.0
Italy	399	460	1,788	2,058	7,690	8,379	15.3	15.1	9.0
Netherlands	903	851	2,883	2,709	26,798	27,223	-5.8	-6.0	1.6
Spain	609	805	2,073	2,559	7,489	8,944	32.2	23.4	19.4
Switzerland	861	759	1,869	1,771	14,203	14,587	-11.8	-5.2	2.7
United Kingdom	11,718	11,178	37,440	37,362	289,324	301,521	-4.6	-0.2	4.2
Americas	14,301	14,214	50,235	47,434	290,931	290,533	-0.6	-5.6	-0.1
Brazil	756	874	2,142	2,594	8,603	10,262	15.6	21.1	19.3
Canada	1,995	1,909	6,492	6,451	44,277	46,851	-4.3	-0.6	5.8
United States of America	10,458	10,327	38,379	34,777	224,285	217,803	-1.3	-9.4	-2.9
Other⁽³⁾	4,662	5,175	15,459	17,545	68,604	77,194	11.0	13.5	12.5
Saudi Arabia	126	115	1,002	1,047	2,774	2,859	-8.7	4.5	3.1
South Africa	1,239	1,380	3,411	3,878	18,019	20,484	11.4	13.7	13.7
United Arab Emirates	210	207	1,635	1,715	4,214	4,807	-1.4	4.9	14.1
Total⁽⁴⁾	166,531	168,838	489,200	506,659	2,383,940	2,475,253	1.4	3.6	3.8

(1) Intended length of stay in New Zealand is less than 12 months.

(2) Minus sign denotes a decrease.

(3) Includes not stated.

(4) These totals are actual counts and may differ from the sum of individual figures for different countries that are derived from samples.

Table 7

New Zealand Resident Short-term Departures⁽¹⁾
By country of main destination

Country of main destination	Month of September		September quarter		Year ended September		Percentage change from 2006 ⁽²⁾		
	2006	2007	2006	2007	2006	2007	Month	Quarter	Year
Oceania	127,925	127,305	352,465	358,809	1,160,862	1,204,154	-0.5	1.8	3.7
Australia	99,350	99,792	268,095	276,652	926,320	967,228	0.4	3.2	4.4
Cook Islands	5,750	5,994	16,937	17,998	44,226	50,098	4.2	6.3	13.3
Fiji	13,975	11,637	42,154	35,075	110,770	96,719	-16.7	-16.8	-12.7
French Polynesia	550	756	1,778	2,052	5,539	6,253	37.5	15.4	12.9
New Caledonia	875	1,134	2,838	3,142	6,910	8,105	29.6	10.7	17.3
Norfolk Island	550	567	1,669	1,675	7,305	7,069	3.1	0.4	-3.2
Samoa	3,100	3,618	8,513	10,656	29,355	35,894	16.7	25.2	22.3
Tonga	2,000	1,701	5,304	5,001	14,769	15,231	-15.0	-5.7	3.1
Vanuatu	1,100	1,404	3,177	4,530	8,999	10,811	27.6	42.6	20.1
Asia	24,125	24,165	57,987	60,503	234,955	244,171	0.2	4.3	3.9
China, PR	4,975	6,264	10,932	13,464	51,444	56,513	25.9	23.2	9.9
Hong Kong (SAR)	1,275	1,620	3,483	4,220	18,428	18,900	27.1	21.2	2.6
India	2,150	1,593	4,429	4,041	22,246	24,873	-25.9	-8.8	11.8
Indonesia	1,250	1,593	4,096	3,971	10,627	11,192	27.4	-3.1	5.3
Japan	2,550	2,700	4,585	5,338	17,304	18,904	5.9	16.4	9.2
Korea, Republic of	1,500	1,674	3,211	3,300	14,497	15,309	11.6	2.8	5.6
Malaysia	1,650	1,458	4,895	4,232	17,444	16,454	-11.6	-13.5	-5.7
Philippines	400	513	1,257	1,453	6,772	7,445	28.3	15.6	9.9
Singapore	1,950	1,647	5,404	4,249	16,876	14,305	-15.5	-21.4	-15.2
Taiwan	975	918	2,278	2,026	12,198	10,778	-5.8	-11.1	-11.6
Thailand	3,175	2,862	9,165	9,928	29,159	30,556	-9.9	8.3	4.8
Viet Nam	1,200	675	1,842	2,147	6,801	7,611	-43.8	16.6	11.9
Europe	18,550	24,435	54,960	61,293	159,882	172,825	31.7	11.5	8.1
France	1,675	5,670	4,182	8,408	11,160	16,497	238.5	101.1	47.8
Germany	1,275	729	3,455	2,775	10,416	9,419	-42.8	-19.7	-9.6
Ireland	550	621	1,844	1,705	5,019	5,211	12.9	-7.5	3.8
Italy	1,900	2,349	4,055	4,453	11,335	11,838	23.6	9.8	4.4
Netherlands	600	513	2,034	1,533	6,010	5,373	-14.5	-24.6	-10.6
Spain	825	729	1,838	1,743	4,787	6,508	-11.6	-5.2	36.0
United Kingdom	9,450	11,907	29,738	33,371	90,642	95,295	26.0	12.2	5.1
Americas	13,450	13,581	35,612	37,363	115,015	118,582	1.0	4.9	3.1
Canada	1,475	1,377	5,859	5,337	16,578	16,594	-6.6	-8.9	0.1
United States of America	10,800	10,854	26,919	29,038	87,595	90,025	0.5	7.9	2.8
Other⁽³⁾	17,800	18,846	50,192	53,250	193,607	201,111	5.9	6.1	3.9
South Africa	1,050	999	2,697	2,299	12,293	12,413	-4.9	-14.8	1.0
Total⁽⁴⁾	201,928	208,467	552,452	571,792	1,867,268	1,943,404	3.2	3.5	4.1

(1) New Zealand resident departures for an intended period of less than 12 months.

(2) Minus sign denotes a decrease.

(3) Includes not stated.

(4) These totals are actual counts and may differ from the sum of individual figures for different countries that are derived from samples.

Table 8

Permanent and Long-term Arrivals⁽¹⁾
By country of last permanent residence

Country of last permanent residence	Month of September		September quarter		Year ended September		Percentage change from 2006 ⁽²⁾		
	2006	2007	2006	2007	2006	2007	Month	Quarter	Year
Oceania	1,383	1,537	4,237	4,333	19,452	19,520	11.1	2.3	0.3
Australia	945	1,074	2,798	2,994	13,268	13,579	13.7	7.0	2.3
Fiji	228	268	656	698	2,637	2,686	17.5	6.4	1.9
Samoa	90	76	382	319	1,598	1,494	-15.6	-16.5	-6.5
Tonga	47	35	197	138	840	796	-25.5	-29.9	-5.2
Asia	1,551	1,881	5,315	6,153	19,590	22,688	21.3	15.8	15.8
China, PR	353	411	1,153	1,156	4,123	4,046	16.4	0.3	-1.9
Hong Kong (SAR)	36	46	164	167	598	644	27.8	1.8	7.7
India	172	358	849	1,349	2,763	3,905	108.1	58.9	41.3
Japan	252	222	679	612	3,222	2,756	-11.9	-9.9	-14.5
Korea, Republic of	155	144	446	434	1,845	2,124	-7.1	-2.7	15.1
Malaysia	45	65	316	328	1,360	1,547	44.4	3.8	13.8
Philippines	241	339	660	970	1,928	3,540	40.7	47.0	83.6
Singapore	44	35	159	127	625	617	-20.5	-20.1	-1.3
Taiwan	94	115	230	271	820	920	22.3	17.8	12.2
Thailand	52	47	240	279	827	1,019	-9.6	16.3	23.2
Viet Nam	20	21	91	100	254	302	5.0	9.9	18.9
Europe	3,403	2,952	8,375	7,414	30,168	27,950	-13.3	-11.5	-7.4
France	101	102	225	210	776	856	1.0	-6.7	10.3
Germany	293	287	895	963	2,209	2,433	-2.0	7.6	10.1
Ireland	124	128	294	290	1,188	1,190	3.2	-1.4	0.2
Netherlands	84	63	213	152	769	640	-25.0	-28.6	-16.8
United Kingdom	2,534	2,115	5,974	5,059	22,753	20,463	-16.5	-15.3	-10.1
Americas	610	583	1,639	1,700	6,383	6,522	-4.4	3.7	2.2
Canada	190	154	420	386	1,608	1,527	-18.9	-8.1	-5.0
United States of America	360	359	1,002	1,027	3,636	3,621	-0.3	2.5	-0.4
Other⁽³⁾	495	525	1,467	1,737	6,048	6,324	6.1	18.4	4.6
Saudi Arabia	12	52	33	187	190	411	333.3	466.7	116.3
South Africa	149	169	446	515	1,739	2,098	13.4	15.5	20.6
United Arab Emirates	25	20	79	90	263	279	-20.0	13.9	6.1
Total	7,442	7,478	21,033	21,337	81,641	83,004	0.5	1.4	1.7

(1) Permanent and long-term arrivals include overseas migrants who arrive in New Zealand intending to stay for a period of 12 months or more (or permanently), plus New Zealand residents returning after an absence of 12 months or more.

(2) Minus sign denotes a decrease.

(3) Includes not stated.

Table 9

Permanent and Long-term Departures⁽¹⁾
By country of next permanent residence

Country of next permanent residence	Month of September		September quarter		Year ended September		Percentage change from 2006 ⁽²⁾		
	2006	2007	2006	2007	2006	2007	Month	Quarter	Year
Oceania	2,563	2,953	7,851	9,352	35,697	41,506	15.2	19.1	16.3
Australia	2,463	2,846	7,498	8,935	33,866	39,773	15.6	19.2	17.4
Fiji	23	13	62	53	348	278	-43.5	-14.5	-20.1
Samoa	24	43	92	122	428	476	79.2	32.6	11.2
Tonga	10	18	31	45	242	203	80.0	45.2	-16.1
Asia	631	644	2,276	2,363	9,519	9,090	2.1	3.8	-4.5
China, PR	211	176	703	673	2,582	2,420	-16.6	-4.3	-6.3
Hong Kong (SAR)	31	19	117	123	443	440	-38.7	5.1	-0.7
India	36	53	143	150	605	622	47.2	4.9	2.8
Japan	101	106	388	367	1,474	1,393	5.0	-5.4	-5.5
Korea, Republic of	97	105	389	431	2,078	1,838	8.2	10.8	-11.5
Malaysia	34	60	100	140	419	483	76.5	40.0	15.3
Philippines	11	14	25	43	139	144	27.3	72.0	3.6
Singapore	41	16	110	84	341	419	-61.0	-23.6	22.9
Taiwan	18	12	88	76	357	293	-33.3	-13.6	-17.9
Thailand	23	29	70	97	386	379	26.1	38.6	-1.8
Viet Nam	8	11	42	32	144	102	37.5	-23.8	-29.2
Europe	1,007	1,109	3,885	4,338	15,614	16,318	10.1	11.7	4.5
France	35	44	109	148	432	513	25.7	35.8	18.8
Germany	65	53	269	269	718	814	-18.5	0.0	13.4
Ireland	98	53	257	215	1,022	868	-45.9	-16.3	-15.1
Netherlands	10	17	65	95	265	326	70.0	46.2	23.0
United Kingdom	706	827	2,832	3,131	11,777	12,248	17.1	10.6	4.0
Americas	313	298	1,263	1,278	4,761	4,721	-4.8	1.2	-0.8
Canada	91	71	369	330	1,470	1,482	-22.0	-10.6	0.8
United States of America	164	166	714	755	2,611	2,524	1.2	5.7	-3.3
Other⁽³⁾	266	233	793	810	2,850	3,060	-12.4	2.1	7.4
Saudi Arabia	5	9	26	33	85	106	80.0	26.9	24.7
South Africa	32	21	84	71	382	344	-34.4	-15.5	-9.9
United Arab Emirates	52	50	160	229	408	638	-3.8	43.1	56.4
Total	4,780	5,237	16,068	18,141	68,441	74,695	9.6	12.9	9.1

(1) Permanent and long-term departures include New Zealand residents departing for an intended period of 12 months or more (or permanently), plus overseas visitors departing New Zealand after a stay of 12 months or more.

(2) Minus sign denotes a decrease.

(3) Includes not stated.

Table 10

Net Permanent and Long-term Migration⁽¹⁾
By country of last/next permanent residence

Country of last/next permanent residence	Month of September ⁽²⁾		September quarter ⁽²⁾		Year ended September ⁽²⁾		Change from 2006 ⁽³⁾		
	2006	2007	2006	2007	2006	2007	Month	Quarter	Year
Oceania	-1,180	-1,416	-3,614	-5,019	-16,245	-21,986	-236	-1,405	-5,741
Australia	-1,518	-1,772	-4,700	-5,941	-20,598	-26,194	-254	-1,241	-5,596
Fiji	205	255	594	645	2,289	2,408	50	51	119
Samoa	66	33	290	197	1,170	1,018	-33	-93	-152
Tonga	37	17	166	93	598	593	-20	-73	-5
Asia	920	1,237	3,039	3,790	10,071	13,598	317	751	3,527
China, PR	142	235	450	483	1,541	1,626	93	33	85
Hong Kong (SAR)	5	27	47	44	155	204	22	-3	49
India	136	305	706	1,199	2,158	3,283	169	493	1,125
Japan	151	116	291	245	1,748	1,363	-35	-46	-385
Korea, Republic of	58	39	57	3	-233	286	-19	-54	519
Malaysia	11	5	216	188	941	1,064	-6	-28	123
Philippines	230	325	635	927	1,789	3,396	95	292	1,607
Singapore	3	19	49	43	284	198	16	-6	-86
Taiwan	76	103	142	195	463	627	27	53	164
Thailand	29	18	170	182	441	640	-11	12	199
Viet Nam	12	10	49	68	110	200	-2	19	90
Europe	2,396	1,843	4,490	3,076	14,554	11,632	-553	-1,414	-2,922
France	66	58	116	62	344	343	-8	-54	-1
Germany	228	234	626	694	1,491	1,619	6	68	128
Ireland	26	75	37	75	166	322	49	38	156
Netherlands	74	46	148	57	504	314	-28	-91	-190
United Kingdom	1,828	1,288	3,142	1,928	10,976	8,215	-540	-1,214	-2,761
Americas	297	285	376	422	1,622	1,801	-12	46	179
Canada	99	83	51	56	138	45	-16	5	-93
United States of America	196	193	288	272	1,025	1,097	-3	-16	72
Other⁽⁴⁾	229	292	674	927	3,198	3,264	63	253	66
Saudi Arabia	7	43	7	154	105	305	36	147	200
South Africa	117	148	362	444	1,357	1,754	31	82	397
United Arab Emirates	-27	-30	-81	-139	-145	-359	-3	-58	-214
Total	2,662	2,241	4,965	3,196	13,200	8,309	-421	-1,769	-4,891

(1) Net permanent and long-term migration is derived by subtracting permanent and long-term departures from permanent and long-term arrivals. Permanent and long-term arrivals include overseas migrants who arrive in New Zealand intending to stay for a period of 12 months or more (or permanently), plus New Zealand residents returning after an absence of 12 months or more. Permanent and long-term departures include New Zealand residents departing for an intended period of 12 months or more (or permanently), plus overseas visitors departing New Zealand after a stay of 12 months or more.

(2) Minus sign indicates an excess of departures over arrivals.

(3) Minus sign denotes a decrease.

(4) Includes not stated.

Table 11

Permanent and Long-term Migration
By country of citizenship

Period	Country of citizenship								
	New Zealand			Non-New Zealand			Total		
	Arrivals ⁽¹⁾	Departures ⁽²⁾	Net ⁽³⁾	Arrivals ⁽¹⁾	Departures ⁽²⁾	Net ⁽³⁾	Arrivals ⁽¹⁾	Departures ⁽²⁾	Net ⁽³⁾
To/from all countries⁽⁴⁾									
Month of September									
1997	1,738	3,009	-1,271	3,001	980	2,021	4,739	3,989	750
1998	1,487	3,680	-2,193	3,028	1,106	1,922	4,515	4,786	-271
1999	1,852	3,606	-1,754	3,062	1,000	2,062	4,914	4,606	308
2000	1,693	3,859	-2,166	3,973	995	2,978	5,666	4,854	812
2001	1,969	3,148	-1,179	5,700	1,009	4,691	7,669	4,157	3,512
2002	2,091	2,632	-541	6,015	1,055	4,960	8,106	3,687	4,419
2003	2,414	2,440	-26	4,987	1,259	3,728	7,401	3,699	3,702
2004	2,125	3,026	-901	4,600	1,534	3,066	6,725	4,560	2,165
2005	2,038	3,260	-1,222	4,695	1,521	3,174	6,733	4,781	1,952
2006	2,062	3,388	-1,326	5,380	1,392	3,988	7,442	4,780	2,662
2007	2,058	3,756	-1,698	5,420	1,481	3,939	7,478	5,237	2,241
Year ended September									
1997	22,602	43,861	-21,259	49,266	15,108	34,158	71,868	58,969	12,899
1998	22,006	46,216	-24,210	36,894	16,547	20,347	58,900	62,763	-3,863
1999	20,696	52,290	-31,594	36,583	15,533	21,050	57,279	67,823	-10,544
2000	22,145	56,720	-34,575	40,658	15,611	25,047	62,803	72,331	-9,528
2001	21,908	60,869	-38,961	52,794	15,524	37,270	74,702	76,393	-1,691
2002	25,396	43,237	-17,841	70,021	15,070	54,951	95,417	58,307	37,110
2003	27,594	37,875	-10,281	67,946	17,228	50,718	95,540	55,103	40,437
2004	25,731	42,271	-16,540	56,092	21,795	34,297	81,823	64,066	17,757
2005	24,674	48,851	-24,177	54,265	23,683	30,582	78,939	72,534	6,405
2006	24,054	47,603	-23,549	57,587	20,838	36,749	81,641	68,441	13,200
2007	23,218	53,728	-30,510	59,786	20,967	38,819	83,004	74,695	8,309
To/from Australia⁽⁵⁾									
Month of September									
1997	471	1,580	-1,109	256	215	41	727	1,795	-1,068
1998	396	1,944	-1,548	233	234	-1	629	2,178	-1,549
1999	503	2,064	-1,561	253	245	8	756	2,309	-1,553
2000	519	2,233	-1,714	288	214	74	807	2,447	-1,640
2001	602	1,686	-1,084	367	217	150	969	1,903	-934
2002	612	1,370	-758	278	182	96	890	1,552	-662
2003	749	1,351	-602	353	240	113	1,102	1,591	-489
2004	609	1,861	-1,252	378	221	157	987	2,082	-1,095
2005	578	2,025	-1,447	343	263	80	921	2,288	-1,367
2006	649	2,178	-1,529	296	285	11	945	2,463	-1,518
2007	679	2,552	-1,873	395	294	101	1,074	2,846	-1,772
Year ended September									
1997	7,464	22,200	-14,736	5,032	3,386	1,646	12,496	25,586	-13,090
1998	6,890	23,824	-16,934	4,061	3,393	668	10,951	27,217	-16,266
1999	6,334	29,037	-22,703	3,556	3,515	41	9,890	32,552	-22,662
2000	6,969	33,554	-26,585	3,877	3,405	472	10,846	36,959	-26,113
2001	7,483	36,341	-28,858	4,006	3,507	499	11,489	39,848	-28,359
2002	8,572	22,618	-14,046	4,435	3,234	1,201	13,007	25,852	-12,845
2003	9,248	20,426	-11,178	4,835	2,967	1,868	14,083	23,393	-9,310
2004	8,927	24,483	-15,556	5,443	3,496	1,947	14,370	27,979	-13,609
2005	8,332	30,178	-21,846	5,275	4,126	1,149	13,607	34,304	-20,697
2006	8,307	29,844	-21,537	4,961	4,022	939	13,268	33,866	-20,598
2007	8,411	35,310	-26,899	5,168	4,463	705	13,579	39,773	-26,194

(1) For a definition of permanent and long-term arrivals, see table 8.

(2) For a definition of permanent and long-term departures, see table 9.

(3) A minus sign indicates an excess of departures over arrivals.

(4) Figures to/from all countries are derived from the INFOS series S1EETA, S2EETA, S1EETZ and S2EETZ, eg arrivals of non-New Zealand citizens is S1EETZ minus S1EETA.

(5) Figures to/from Australia are derived from the INFOS series S1GEAUA, S2FEAUA, S1GEAUZ and S2FEAUZ.