

International Travel and Migration: September 2017

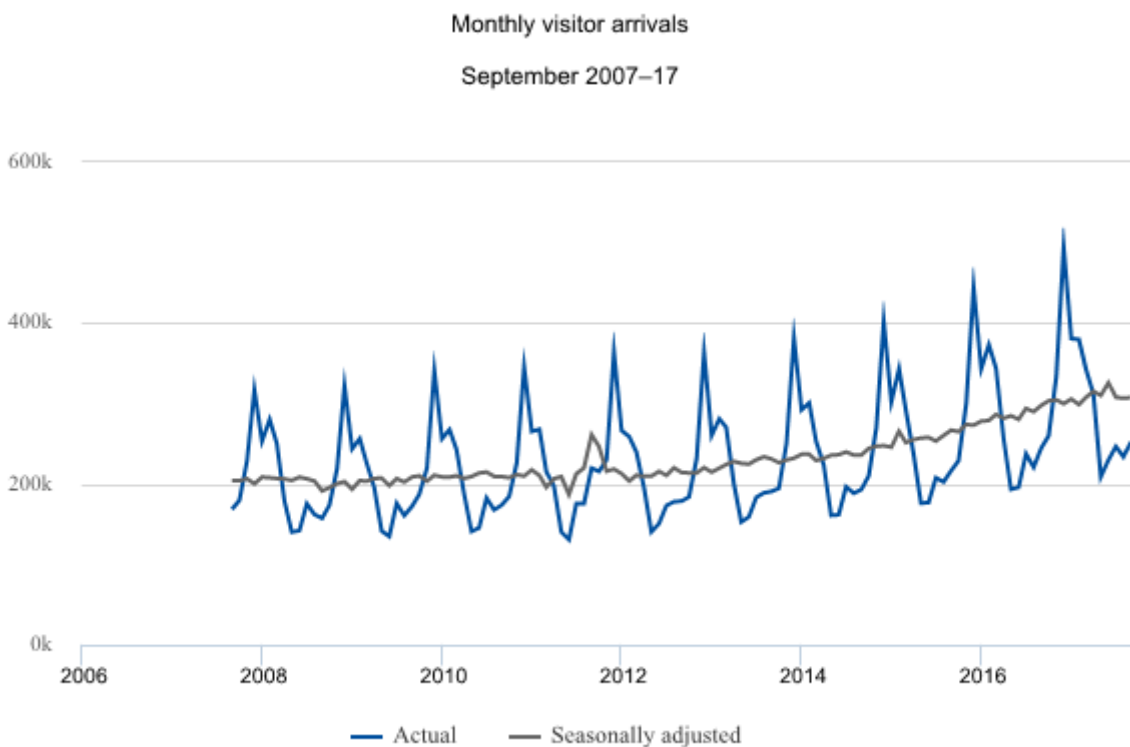
Embargoed until 10:45am – 20 October 2017

Key facts

In September 2017 compared with September 2016 visitor arrivals were up 7,700 to 252,700.

The biggest changes were in arrivals from:

- Australia (up 4,800)
- China (up 3,500)
- United States of America (down 1,900)
- Republic of Korea (up 1,400)



Source: Stats NZ

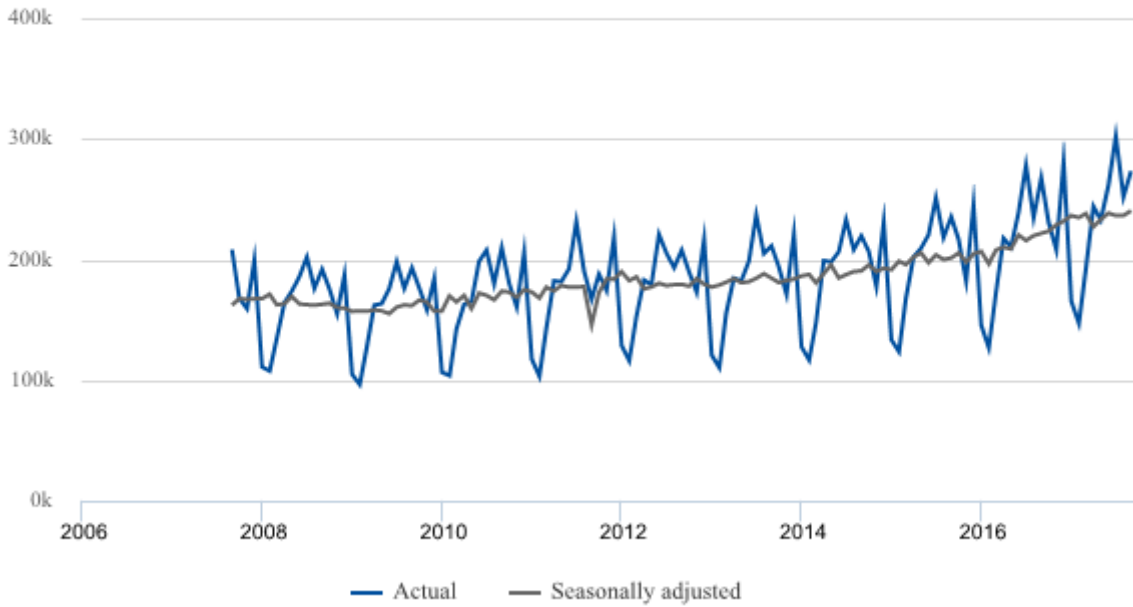
Overseas trips by New Zealand residents were up 5,600 to 273,600.

The biggest changes were in departures to:

- Australia (down 7,200)
- United States of America (down 2,800)
- Fiji (up 2,100)
- United Kingdom (up 2,000)
- China (up 2,000).

Monthly overseas trips by New Zealand residents

September 2007–17



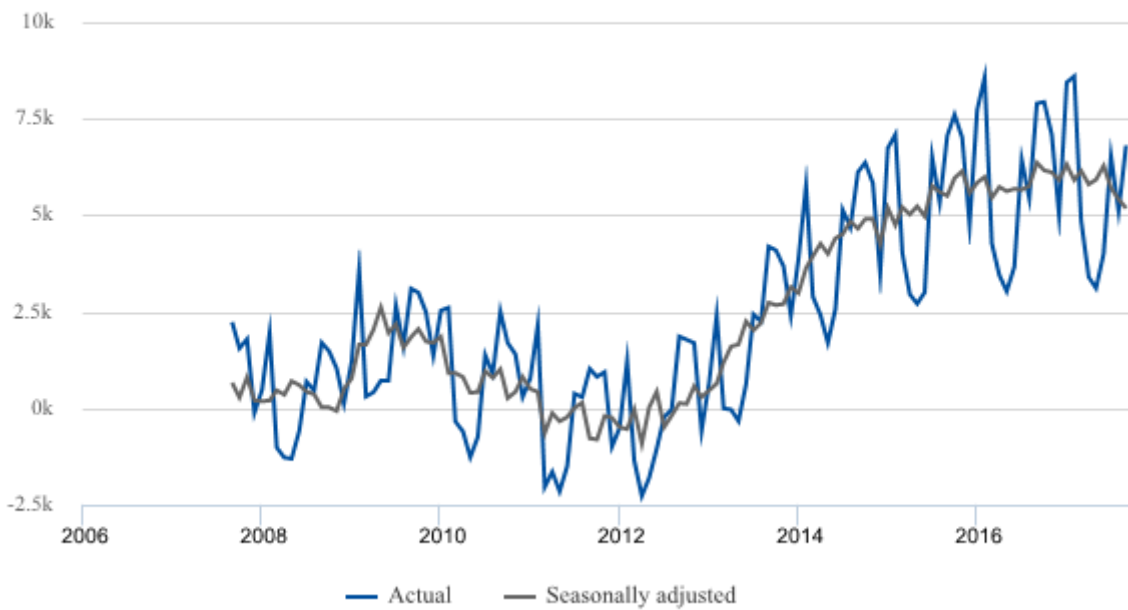
Source: Stats NZ

Permanent and long-term arrivals were down 600 to 11,100.

Permanent and long-term departures were up 500 to 4,300.

Monthly net permanent and long-term migration

September 2007–17

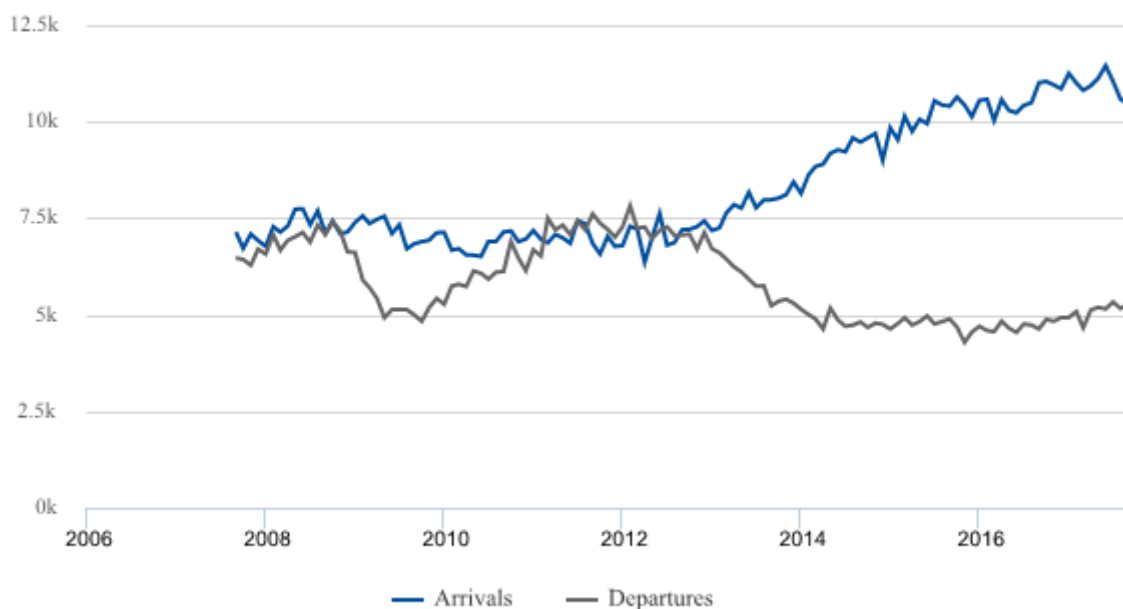


Source: Stats NZ

Seasonally adjusted figures showed a net gain of 5,200 migrants.

Seasonally adjusted monthly permanent and long-term migration

September 2007–17



Source: Stats NZ

In the September 2017 year compared with the September 2016 year:

- visitor arrivals numbered 3.68 million, up 291,100 (9 percent)
- New Zealand residents departed on 2.79 million trips overseas, up 253,000 (10 percent)
- permanent and long-term arrivals were 131,600, up 6,000 (5 percent)
- permanent and long-term departures were 60,600, up 4,900 (9 percent)
- the net gain in migrants was 71,000, up 1,000.

New Infoshare series

Starting in June 2017, we released two new Infoshare series:

- permanent and long-term arrivals by country of citizenship and visa type
- visitor arrivals by country of citizenship and visa type.

To access these new series, select the following categories from Infoshare:

Subject category: **Tourism**

Group: **International Travel and Migration**

See also:

- [Annual net migration down to 71,000 – media release](#)
- [Record-breaking 3.7 million visitors to New Zealand – media release](#)

Liz MacPherson, Government Statistician

ISSN 1179-0407

20 October 2017

Related links

Next release

International Travel and Migration: October 2017 will be released on 22 November 2017.

[Subscribe to information releases](#), including this one, by completing the online subscription form. You can also subscribe to receive International Visitor Arrivals to New Zealand, and our weekly provisional international travel statistics.

[The release calendar](#) lists all information releases by date of release.

Past releases

[International Travel and Migration](#) has links to past releases.

Data quality

International Travel and Migration – DataInfo+

General methodology used to produce international travel and migration statistics.

International Travel and Migration concepts – DataInfo+

Definitions of terms used in this release.

Principles and protocols for producers of Tier 1 statistics

Statistics in this release are produced in accordance with the Official Statistics System principles and protocols for producers of Tier 1 statistics for quality. They conform to the Statistics NZ Methodological Standard for Reporting of Data Quality.

Related information

[International travel and migration articles](#) are occasional publications that provide analyses of selected topics.

Information about international travel

[International Visitor Arrivals to New Zealand](#) contains detailed tables about the number and characteristics of visitor arrivals. It is released two working days after each International Travel and Migration information release.

[Provisional international travel statistics](#) provide the latest weekly and four-weekly figures for visitor arrivals and New Zealand-resident traveller departures, including figures for 10 major source and destination countries. These are released weekly, usually at 2pm on a Friday.

Stats NZ's [Tourism](#) web page lists tourism-related data sources, such as the Accommodation Survey and the Tourism Satellite Account.

[Tourism research and data](#) from the Ministry of Business, Innovation and Employment includes results from the International Visitor Survey, Domestic Travel Survey, and tourism forecasts.

Tourism New Zealand provides guides to New Zealand's key tourism markets, which include the outlook for future months.

Cruise New Zealand data has figures on cruise ship visits and cruise passengers. This includes passengers considered to be 'in transit' by the Immigration Act 2009, who are not included in international travel and migration statistics.

Information about international migration

Stats NZ's Migration web page lists migration-related data sources, such as the Longitudinal Immigration Survey (2005–09).

Migration trends provides information from the Labour and Immigration Research Centre, part of the Ministry of Business, Innovation and Employment, which publishes research reports and information about the immigration research programme.

Immigration New Zealand statistics include application and approval numbers for the main immigration visa types.

Copyright and terms of use

Includes our copyright, attribution, and liability statements.

Contacts

For media enquiries contact:

Kim Dunstan
Christchurch 03 964 8330
James Weir
Wellington 021 285 9191
Email: info@stats.govt.nz

For technical information contact:

Mosiana Ha'unga
Christchurch 03 964 8838
Email: info@stats.govt.nz

For general enquiries contact our Information Centre:

Phone: 0508 525 525 (toll-free in New Zealand)
+64 4 931 4600 (outside New Zealand)
Email: info@stats.govt.nz

Subscription service:

Subscribe to information releases, including this one, by completing the online subscription form.

Correction notifications:

Subscribe to receive an email if a correction notice is published for International Travel and Migration.

Unsubscribe to correction notifications for International Travel and Migration.

Subscribe to all to receive an email if a correction notice is published for any of our information releases.

Unsubscribe to all if you change your mind.

Tables

See the following Excel tables in the 'Downloads' box on this page. If you have problems viewing the files, see [opening files and PDFs](#).

1. International travel and migration, by direction and passenger type, actual counts
2. International travel and migration, by direction and passenger type, seasonally adjusted and trend series
3. Overseas visitor arrivals, by country of last permanent residence
4. Overseas visitor arrivals, by travel purpose and country of last permanent residence
5. New Zealand-resident traveller departures, by country of main destination
6. Permanent and long-term arrivals, by country of last permanent residence
7. Permanent and long-term departures, by country of next permanent residence
8. Net permanent and long-term migration, by country of last/next permanent residence
9. Permanent and long-term migration, by citizenship, actual counts
10. Permanent and long-term migration, by citizenship, seasonally adjusted series
11. Permanent and long-term migration, by New Zealand region
12. Permanent and long-term arrivals, by visa type and country of last permanent residence

Access more data on Infoshare

Infoshare allows you to organise data in the way that best meets your needs. You can view the resulting tables onscreen or download them.

Use Infoshare

For this release, select the following categories from the Infoshare homepage:

Subject category: **Tourism**

Group: **International Travel and Migration**

Next release

International Travel and Migration: October 2017 will be released on 22 November 2017.