

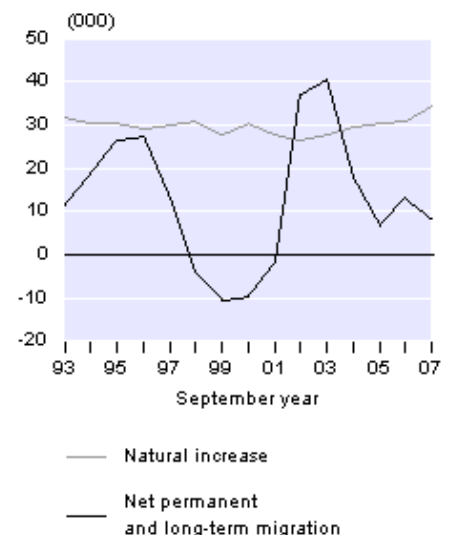
Embargoed until 10:45am – 7 November 2007

National Population Estimates: September 2007 quarter

Highlights

- The estimated resident population of New Zealand was 4.24 million at 30 September 2007.
- Population growth was 42,700 (1.0 percent) during the September 2007 year.
- Natural increase and net migration contributed 34,400 and 8,300, respectively, during the September 2007 year.
- The median ages for males and females were 35.3 and 36.9 years, respectively, at 30 September 2007.

Components of Annual Population Change
1993–2007



Estimated resident population	At 30 September 2006 R	At 30 September 2007 P	Percentage change 2006–2007 P
All ages	4,196,600	4,239,300	1.0
Under 15 years	887,900	888,000	0.0
15–64 years	2,793,800	2,821,600	1.0
65 years and over	514,900	529,600	2.9

R revised P provisional

Geoff Bascand
Government Statistician

7 November 2007
ISSN 1178-0576

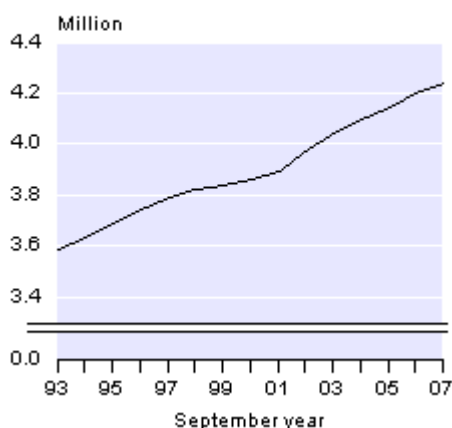
There is a companion Media Release published – [National Population Estimates: September 2007 quarter](#).

Commentary

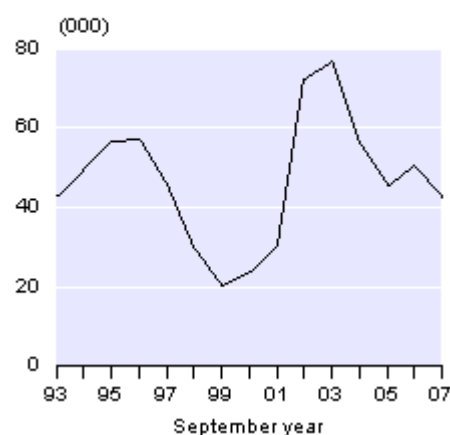
Estimated resident population at 30 September 2007

The estimated resident population of New Zealand was 4,239,300 at 30 September 2007. The mean estimated resident population for the year ended 30 September 2007 was 4,220,100.

Estimated Resident Population
1993–2007



Annual Population Change
1993–2007



Annual population change

In the September 2007 year, the estimated resident population grew by 42,700. The population growth in the September 2007 year is slightly lower than the average annual increase of 44,800 recorded during the 10-year period from September 1997 to September 2007.

The population growth for the September 2007 year resulted from a natural increase of 34,400 and a net permanent and long-term migration gain of 8,300. This is the highest annual natural increase recorded since December 1991. Historically, natural increase (excess of births over deaths) has been the dominant element in population growth. During the September 2007 year, natural increase accounted for 81 percent of population growth.

At 30 September 2007, the estimated resident populations for males and females were 2,076,500 and 2,162,800, respectively. There were around 96 males for every 100 females at 30 September 2007.

Quarterly population change

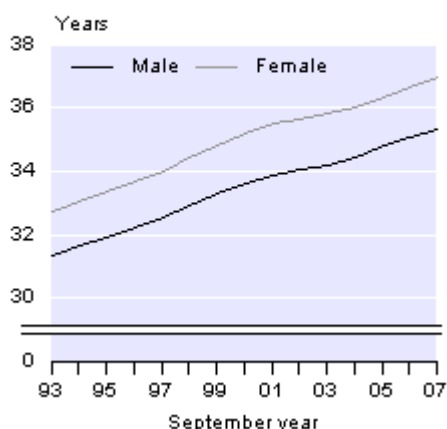
During the September 2007 quarter, New Zealand's estimated resident population grew by 11,000 (0.3 percent). This resulted from a natural increase of 7,800 and a net permanent and long-term migration gain of 3,200. The population increase for the September 2006 quarter was higher at 12,000 (0.3 percent), mainly due to a larger net migration gain (5,000).

Median age

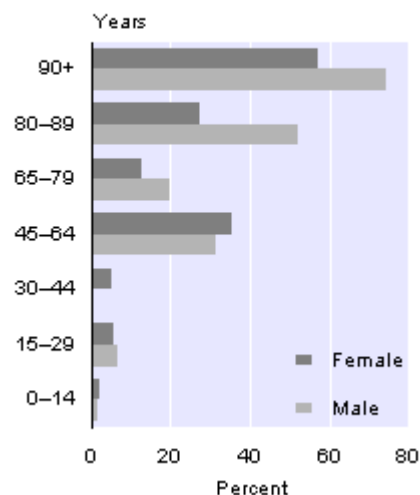
New Zealand, along with other OECD countries, has an ageing population because of low fertility and low mortality. At 30 September 2007, half of the New Zealand population was over the age of 36.2 years, compared with a median age of 33.3 years a decade earlier.

The median age for males is now 35.3 years, while for females it is 36.9 years. Over the last decade, the median age has increased 2.8 years for males and 2.9 years for females. The lower median age for males reflects their lower life expectancy of 77.9 years, compared with 81.9 years for females (Abridged period life table for 2004–2006).

Median Age by Sex
1993–2007



Population Change by Age Group
September year 1997–2007



Changes in age composition

The age composition of New Zealand's population has changed over the last decade. Between the 1997 and 2004 September years, the number of children (aged 0–14 years) increased by 21,300 (2.4 percent) to reach 892,800. However, since 30 September 2004, the number of children has decreased by 4,800 (0.5 percent) to 888,000, resulting in an overall increase for the decade ended September 2007 of 16,500 (1.9 percent). At 30 September 2007, children accounted for 20.9 percent of the New Zealand population, compared with 23.0 at 30 September 1997.

At 30 September 2007, the population aged 15–64 years reached 2,821,600, an increase of 27,800 (1.0 percent) compared with the September 2006 figure. This age group, which accounted for two-thirds of the New Zealand population at 30 September 2007, increased by 338,800 (13.6 percent) between the 1997 and 2007 September years. Over the same decade, the population aged 45–64 years recorded a larger percentage increase (33.4 percent) than the 15–29 year age group (6.4 percent) and the 30–44 year age group (3.1 percent).

During the September 2007 year, the population aged 65 years and over (65+) increased by 14,700 (2.9 percent). Between the 1997 and 2007 September years, their number increased by 92,700 (21.2 percent) to reach 529,600. The proportion of the population aged 65+ increased to 12.5 percent at 30 September 2007, up from 11.5 percent ten years earlier.

Among age groups within the 65+ category, the population growth rate was consistently higher for males than that for females between the 1997 and 2007 September years. Males and females aged 90 years and over recorded the largest growth rate during this decade, up 74.5 percent and 57.0 percent, respectively. This was followed by increases in the 80–89 year group of 52.3 percent for males and 27.4 percent for females.

Population Clock

Statistics NZ's online Population Clock gives a real-time approximation of the estimated resident population of New Zealand. The Population Clock uses the latest quarterly estimated resident population, and estimates for the expected number of births, deaths and net migration during the following quarter. The settings for each component (births, deaths and net migration) are derived by converting the quarterly estimated totals into a 'per minute' figure, making allowance for the number of days per quarter. The Population Clock can be viewed on the Statistics NZ website: www.stats.govt.nz.

Different population concepts

Users of population statistics need to be aware that there are three main population measures produced by Statistics NZ: the census night population count, the census usually resident population count and the estimated resident population. The population counts published from the census are not comparable with the estimated resident population. The estimated resident population includes adjustments for net census undercount, and for New Zealand residents temporarily overseas on census night. For more information see the Technical notes of this release.

Final figures

The population estimates for the September 2007 year quoted above, and contained in the appended table, are provisional. Processing of final statistics will be completed in February 2008.

For technical information contact:

Joel Watkins

Christchurch 03 964 8700

Email: demography@stats.govt.nz

Technical notes

Population measures

There are three population measures commonly produced by Statistics New Zealand: census night population count, census usually resident population count and estimated resident population.

The census night population count of New Zealand is a count of all people present in New Zealand on a given census night. This count includes visitors from overseas who are counted on census night, but excludes residents who are temporarily overseas on census night. The census usually resident population count of New Zealand is a count of all people who usually live in New Zealand and are present in New Zealand on a given census night. This count excludes visitors from overseas and residents who are temporarily overseas on census night.

The estimated resident population of New Zealand is an estimate of all people who usually live in New Zealand at a given date. This estimate includes all residents present in New Zealand and counted by the census (census usually resident population count), residents who are temporarily overseas (who are not included in the census), and an adjustment for residents missed or counted more than once by the census (net census undercount). Visitors from overseas are excluded.

Please note that the population counts published in releases of 2001 or 2006 Census of Population and Dwellings data will differ from the estimated resident population counts in a Hot Off The Press or media release.

Base population

The estimated resident population at 30 June 2006 forms the base population for deriving the estimated resident population at a given date following the 2006 Census. This base population is used in turn to derive post-censal population estimates and population projections. It is also used in the revision of intercensal population estimates for the five-year period between the 2001 and 2006 censuses.

The estimated resident population of New Zealand at 30 June 2006 is based on the census usually resident population count from the 2006 Census (held on 7 March 2006), updated for: net census undercount (as measured by the 2006 Post-enumeration Survey); the number of residents temporarily overseas on census night; births, deaths and net permanent and long-term (PLT) migration between 8 March 2006 and 30 June 2006; and reconciliation with demographic estimates at ages 0–4 years.

Resident population estimates

Quarterly estimates from September 2006 onwards were derived by updating the estimated resident population at 30 June 2006 for births, deaths, and net PLT migration during the ensuing periods.

All quarterly and annual estimated resident population figures for 2001–2006 have been revised in light of results from the 2006 Census. The revised estimates for 2001–2006 are now available on the Statistics NZ website: www.stats.govt.nz/people/populationestimates.htm. The estimated resident population series on INFOS (DPE, DAE) have been updated with the revised estimates for 2001–2006.

Median age

Half the population is younger, and half older, than this age.

Final figures

Final figures for the estimated resident population at 30 September 2007 will be available in February 2008.

More information

For more information, follow the [link](#) from the Technical notes of this release on the Statistics NZ website.

Copyright

Information obtained from Statistics NZ may be freely used, reproduced, or quoted unless otherwise specified. In all cases Statistics NZ must be acknowledged as the source.

Liability

While care has been used in processing, analysing and extracting information, Statistics NZ gives no warranty that the information supplied is free from error. Statistics NZ shall not be liable for any loss suffered through the use, directly or indirectly, of any information, product or service.

Timing

Timed statistical releases are delivered using postal and electronic services provided by third parties. Delivery of these releases may be delayed by circumstances outside the control of Statistics NZ. Statistics NZ accepts no responsibility for any such delays.

Next release ...

National Population Estimates: December 2007 quarter will be released on 8 February 2008.

Statistics New Zealand: The first source of independent information for your key decisions.

Tables

The following tables can be downloaded from the Statistics NZ website in Excel format. If you do not have access to Excel, you may use the [Excel file viewer](#) to view, print and export the contents of the file.

List of tables

1. Estimated resident population and population change
2. Estimated resident population, by broad age groups
3. Estimated resident population, by five-year age groups

Table 1

Estimated Resident Population and Population Change

INFOS series:	Estimated resident population ⁽¹⁾ <i>DPEQ.SDAC</i> <i>DPEA.SDCC</i>	Population change		Population change due to:	
		Number ⁽²⁾	Percent	Natural increase ⁽³⁾	Net permanent and long-term migration ⁽⁴⁾
Quarter ended					
30 Sep 2004	4,100,600	13,100	0.32	6,200	4,600
31 Dec 2004	4,114,300	13,800	0.34	7,500	4,100
31 Mar 2005	4,126,600	12,200	0.30	8,100	2,000
30 Jun 2005	4,133,900	7,300	0.18	7,300	-2,200
30 Sep 2005	4,145,900	12,100	0.29	7,400	2,500
31 Dec 2005	4,161,000	15,100	0.36	8,200	4,700
31 Mar 2006	4,176,100	15,100	0.36	8,100	4,800
30 Jun 2006	4,184,600	6,400	0.15	7,600	-1,200
30 Sep 2006	4,196,600	12,000	0.29	7,100	5,000
31 Dec 2006	4,211,400	14,800	0.35	8,700	6,100
31 Mar 2007	4,222,700	11,300	0.27	9,100	2,200
30 Jun 2007	4,228,300	5,600	0.13	8,800	-3,200
30 Sep 2007 P	4,239,300	11,000	0.26	7,800	3,200
Year ended					
30 Sep 1997	3,791,300	45,700	1.22	30,000	12,900
30 Sep 1998	3,821,000	29,700	0.78	30,800	-3,900
30 Sep 1999	3,841,100	20,100	0.53	27,900	-10,500
30 Sep 2000	3,864,900	23,800	0.62	30,600	-9,500
30 Sep 2001	3,895,400	30,500	0.79	27,900	-1,700
30 Sep 2002	3,967,600	72,200	1.85	26,400	37,100
30 Sep 2003	4,044,600	77,000	1.94	27,900	40,400
30 Sep 2004	4,100,600	56,000	1.38	29,500	17,800
30 Sep 2005	4,145,900	45,300	1.11	30,200	6,400
30 Sep 2006	4,196,600	50,700	1.22	31,000	13,200
30 Sep 2007 P	4,239,300	42,700	1.02	34,400	8,300

- (1) The estimated resident population is based on the census usually resident population count, with adjustments for residents missed or counted more than once by the census (net census undercount), and for residents temporarily overseas on census night. Estimates from 2001–2006 have been revised in light of results from the 2006 Census.
- (2) Because estimates for 1996–2006 are based on results from the 2001 and 2006 censuses and the revised base population at 30 June 1996, the components of population change during this period do not sum to the estimated change in population.
- (3) Excess of births over deaths. Births and deaths have been estimated by date of occurrence. They differ from births and deaths registered over the same period.
- (4) Permanent and long-term (PLT) arrivals include overseas visitors who arrive in New Zealand intending to stay for a period of 12 months or more (or permanently), plus New Zealand residents returning after an absence of 12 months or more. Permanent and long-term departures include New Zealand residents departing for an intended period of 12 months or more (or permanently), plus overseas visitors departing from New Zealand after a stay of 12 months or more.

Note: Individual figures may not sum to stated totals due to rounding.

Symbol:

P provisional

Table 2

Estimated Resident Population⁽¹⁾
By broad age groups

At 30 September	Age group (years)				Median age (years)
	All ages	Under 15	15–64	65+	
People					
1997	3,791,300	871,500	2,482,850	436,920	33.3
1998	3,821,000	876,840	2,500,950	443,170	33.7
1999	3,841,100	877,740	2,514,870	448,470	34.1
2000	3,864,900	878,950	2,531,120	454,830	34.4
2001	3,895,400	878,490	2,555,260	461,620	34.7
2002	3,967,600	884,980	2,613,830	468,780	34.9
2003	4,044,600	890,690	2,676,770	477,150	35.0
2004	4,100,600	892,790	2,721,170	486,630	35.3
2005	4,145,900	889,170	2,756,570	500,200	35.6
2006	4,196,600	887,920	2,793,800	514,880	35.9
2007 P	4,239,300	888,020	2,821,640	529,630	36.2
Males					
1997	1,867,900	447,630	1,230,940	189,340	32.5
1998	1,879,900	450,200	1,237,250	192,430	32.9
1999	1,887,200	450,660	1,241,150	195,380	33.3
2000	1,896,900	451,340	1,246,800	198,720	33.6
2001	1,910,300	450,800	1,257,400	202,070	33.9
2002	1,945,800	453,650	1,286,150	205,970	34.0
2003	1,983,800	456,620	1,316,580	210,610	34.2
2004	2,009,900	457,550	1,336,710	215,630	34.5
2005	2,030,500	455,640	1,351,990	222,890	34.8
2006	2,054,400	454,880	1,368,760	230,720	35.1
2007 P	2,076,500	454,880	1,383,210	238,450	35.3
Females					
1997	1,923,400	423,870	1,251,910	247,580	34.0
1998	1,941,100	426,640	1,263,700	250,750	34.4
1999	1,953,900	427,080	1,273,720	253,090	34.8
2000	1,968,000	427,610	1,284,320	256,110	35.2
2001	1,985,100	427,690	1,297,860	259,550	35.5
2002	2,021,800	431,330	1,327,680	262,800	35.6
2003	2,060,800	434,070	1,360,190	266,530	35.8
2004	2,090,700	435,240	1,384,460	271,000	36.0
2005	2,115,400	433,530	1,404,580	277,310	36.4
2006	2,142,200	433,040	1,425,040	284,160	36.6
2007 P	2,162,800	433,150	1,438,430	291,190	36.9

(1) The estimated resident population is based on the census usually resident population count, with adjustments for residents missed or counted more than once by the census (net census undercount), and for residents temporarily overseas on census night. Estimates from 2001–2006 have been revised in light of results from the 2006 Census.

Note: Individual figures may not sum to stated totals due to rounding.

Symbol:

P provisional

Table 3

Estimated Resident Population⁽¹⁾
By five-year age groups

Age group (years)	At 30 September								
	Males			Females			People		
	1997	2006 R	2007 P	1997	2006 R	2007 P	1997	2006 R	2007 P
Under 5	150,000	146,830	150,570	141,440	140,090	143,140	291,440	286,920	293,710
5–9	156,510	149,020	147,950	148,420	142,510	141,380	304,930	291,530	289,330
10–14	141,120	159,030	156,360	134,010	150,440	148,630	275,140	309,470	304,990
15–19	138,420	160,740	163,820	132,790	155,270	157,430	271,220	316,010	321,250
20–24	136,000	146,190	147,890	135,610	145,700	146,310	271,610	291,890	294,210
25–29	140,050	127,490	131,090	147,250	134,210	136,660	287,300	261,700	267,760
30–34	145,950	135,260	131,400	153,780	148,600	144,120	299,720	283,860	275,510
35–39	150,370	149,540	149,870	156,720	163,950	164,670	307,100	313,500	314,540
40–44	134,860	155,490	153,270	138,500	166,250	164,430	273,350	321,740	317,700
45–49	125,810	149,880	153,200	125,690	157,230	161,480	251,500	307,110	314,680
50–54	104,060	130,840	133,600	103,810	134,660	138,270	207,870	265,500	271,880
55–59	86,600	120,200	120,350	87,350	123,230	123,140	173,950	243,430	243,490
60–64	68,810	93,120	98,720	70,420	95,930	101,920	139,230	189,050	200,640
65–69	65,780	76,580	80,070	68,310	81,040	84,420	134,090	157,620	164,490
70–74	54,170	57,650	58,680	62,480	62,970	64,340	116,650	120,620	123,020
75–79	36,070	47,810	48,250	51,280	56,110	56,270	87,350	103,920	104,510
80–84	21,100	30,310	31,730	36,360	43,970	44,440	57,460	74,280	76,170
85–89	9,170	13,330	14,380	20,010	26,140	27,350	29,180	39,460	41,730
90 and over	3,060	5,050	5,340	9,150	13,940	14,370	12,210	18,980	19,710
All ages	1,867,900	2,054,400	2,076,500	1,923,400	2,142,200	2,162,800	3,791,300	4,196,600	4,239,300

(1) The estimated resident population is based on the census usually resident population count, with adjustments for residents missed or counted more than once by the census (net census undercount), and for residents temporarily overseas on census night.

Note: Individual figures may not sum to stated totals due to rounding.

Symbols:

R revised

P provisional