

Embargoed until 3:05pm – 19 July 2007

Producers Price Index: December 2006 quarter Revised 19 July 2007 – See attached Erratum

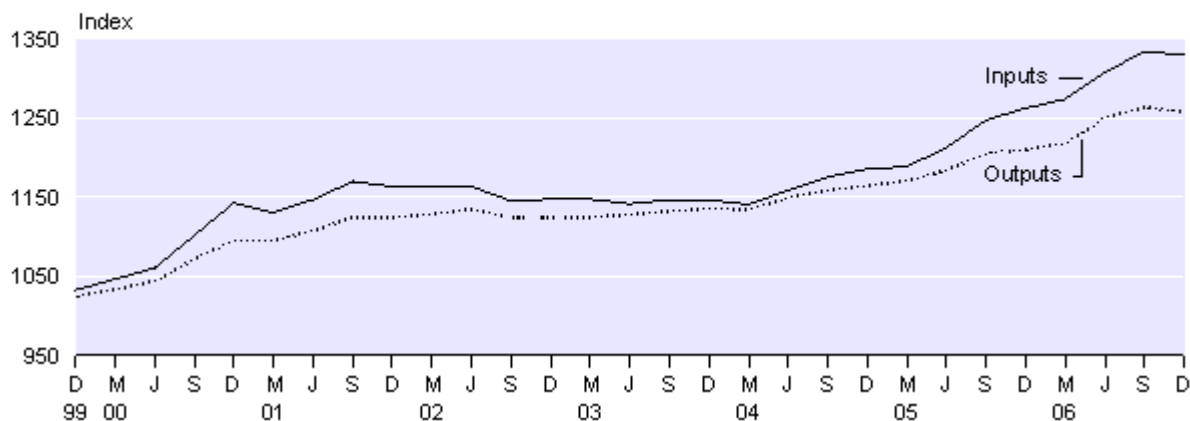
Highlights

- The PPI outputs index fell 0.5 percent in the December 2006 quarter.
- Output prices for electricity generation and supply fell 5.3 percent in the December 2006 quarter.
- Output prices rose 4.0 percent between the December 2005 and December 2006 quarters.
- The PPI inputs index fell 0.3 percent in the December 2006 quarter.
- Input prices for electricity generation and supply fell 11.4 percent in the December 2006 quarter.
- Input prices rose 5.3 percent between the December 2005 and December 2006 quarters.

Producers Price Index

All industries – inputs and outputs

Base: December 1997 quarter (=1000)



Brian Pink
Government Statistician

13 February 2007
Cat 70.906 Set 06/07 – 116

There is a companion Media Release published – *Producers Price Index: December 2006 quarter*.

Commentary

Outputs

Output prices for all industries in the Producers Prices Index (PPI) fell 0.5 percent in the December 2006 quarter, following increases of 1.0 percent and 2.7 percent in the September 2006 and June 2006 quarters, respectively. The fall this quarter is the first decrease since a fall of 0.1 percent in the March 2004 quarter.

The most significant downward contributors to the PPI output index in the December 2006 quarter came from a 5.3 percent fall in the electricity generation and supply index, a 6.1 percent fall in the meat and meat product manufacturing index, and a 4.6 percent fall in the dairy product manufacturing index.

The fall in the electricity generation and supply index this quarter is the third consecutive quarterly decrease and follows falls of 5.6 percent in the September 2006 quarter, and 0.9 percent in the June 2006 quarter. The main reasons behind this quarter's fall were lower spot market generation prices and lower commercial electricity retail prices. In the year to the December 2006 quarter, the electricity generation and supply index fell 6.0 percent, the first annual fall in the index since a 7.7 percent fall in the year to the March 2005 quarter.

The meat and meat product manufacturing index fell 6.1 percent in the December 2006 quarter, following three consecutive quarterly rises of 4.7 percent, 3.2 percent and 1.2 percent in the September, June and March 2006 quarters, respectively. Lower export prices for meat, especially lamb cuts and, to a lesser extent, beef cuts, were the main reason for the fall in the index this quarter.

The 4.6 percent fall in the dairy product manufacturing index in the December 2006 quarter was mainly due to lower prices for cheese. This is the second consecutive fall in the index, and follows a decrease of 4.4 percent in the September 2006 quarter. These two falls combined have caused the first annual fall in the index (down 1.1 percent in the year to the December 2006 quarter) since a 7.2 percent fall in the year to the June 2003 quarter.

The major upward price movements in the December 2006 quarter came from the construction index (up 1.0 percent), the horticulture and fruit growing index (up 6.2 percent), and the sheet and fabricated metal product manufacturing index (up 3.5 percent). Higher prices for site preparation services were the main driver behind the rise in the construction index. The construction index has risen for 31 consecutive quarters and is now 36.6 percent higher than in the March 1999 quarter when the index last fell (down 0.2 percent).

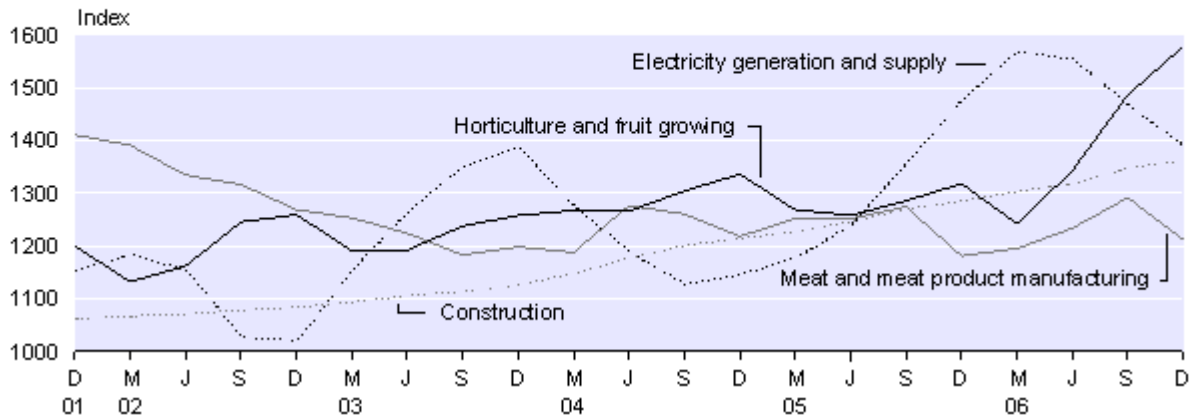
Higher prices for vegetables, especially potatoes and onions, was the main reason for the rise in the horticulture and fruit growing index, while higher prices for sheet metal roofing helped push up the sheet and fabricated metal product manufacturing index.

In the year to the December 2006 quarter, the PPI outputs index rose 4.0 percent, compared with rises of 3.9 percent and 2.6 percent in the years to the December 2005 and 2004 quarters, respectively.

Producers Price Index

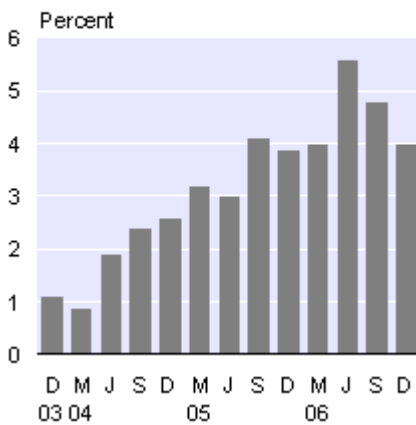
Outputs index – selected industries

Base: December 1997 quarter (=1000)



PPI Outputs

Annual percentage change



Producers Price Index

Outputs – all industries

Quarter	Percentage change from previous quarter	Percentage change from same quarter, previous year
Dec 2004	0.5	2.6
Mar 2005	0.5	3.2
Jun 2005	1.2	3.0
Sep 2005	1.8	4.1
Dec 2005	0.3	3.9
Mar 2006	0.7	4.0
Jun 2006	2.7	5.6
Sep 2006	1.0	4.8
Dec 2006	-0.5	4.0

Inputs

Producers faced an overall price fall in their costs in the December 2006 quarter, following consecutive rises for the last 10 quarters. The overall inputs price index showed a fall of 0.3 percent, the first recorded since the March 2004 quarter. The main reason for the lower costs were falls in prices for producers in the electricity and gas generation and supply industries, and the air and road transport industries.

Lower prices in the electricity generation and supply industry made the most significant contribution to the overall fall in inputs prices, going down 11.4 percent in the December 2006 quarter. This is the third consecutive fall that this industry has recorded, and follows falls of 13.2 percent and 10.5 percent in the September and June 2006 quarters, respectively. Annually, electricity inputs prices have fallen 25.0 percent since the December 2005 quarter. High lake levels and lower fuel costs were the main reasons for the lower prices, as cited by respondents. The lower cost of generating electricity had a follow-through effect, causing lower spot prices in the wholesale electricity market, which had a downward effect on prices for producers across the economy.

Input prices for the gas supply industry also fell in the December 2006 quarter, down 6.9 percent, due to lower costs in electricity and fuel. This is the first fall in the gas supply index since the September 2005 quarter. This index has shown an annual rise of 10.5 percent for the year to the current quarter.

Air transportation input costs fell 3.9 percent this quarter, the first fall in this index since the March 2005 quarter. Lower fuel costs and stronger exchange rates were the primary reasons behind the fall. Annually, the air transport inputs index has risen 6.5 percent since the December 2005 quarter.

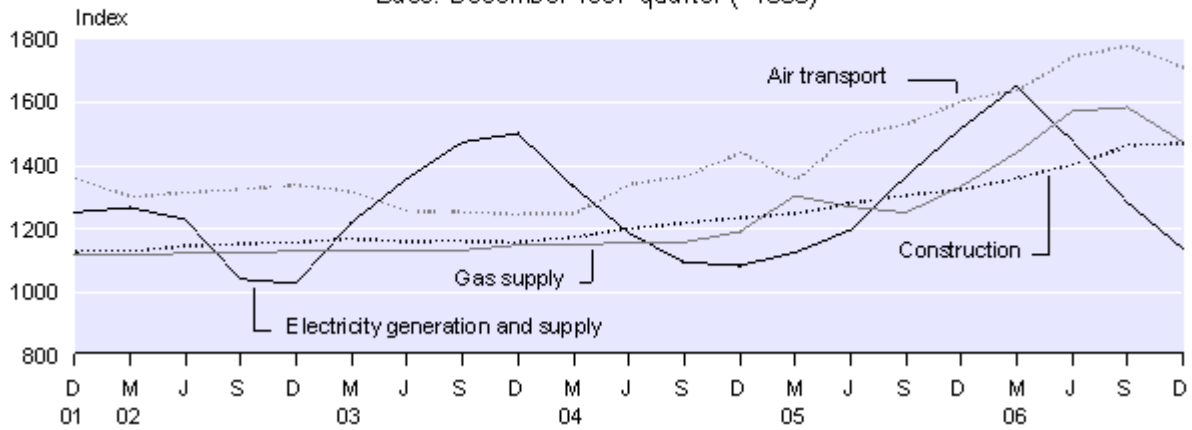
Partly offsetting the overall fall in inputs prices in the December 2006 quarter was a rise in costs to the construction industry, which were up 0.4 percent. High international prices for copper have been cited by respondents as one of the main reasons for input cost increases in the construction sector for the last three quarters, with the cost to produce construction trade services increasing 1.3 percent in the latest quarter.

The quarterly fall in input prices contributed to an easing of annual input price change, which has been averaging 6.9 percent for the last five quarters, but rose only 5.3 percent in the year to December 2006 quarter.

Producers Price Index

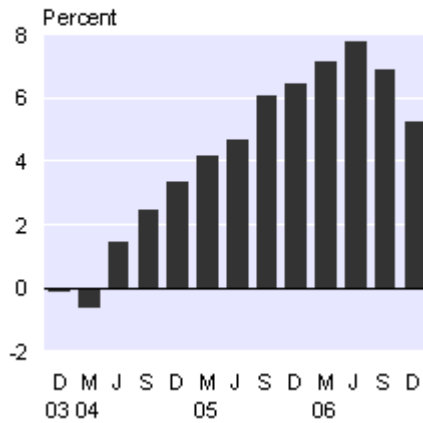
Inputs index – selected industries

Base: December 1997 quarter (=1000)



PPI Inputs

Annual percentage change



Producers Price Index

Inputs – all industries

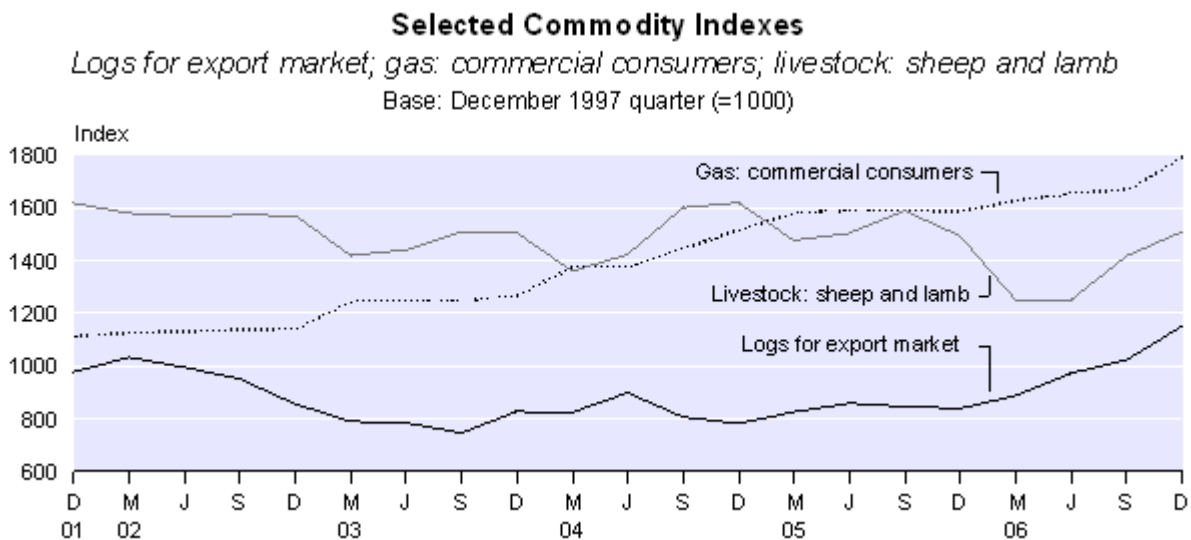
Quarter	Percentage change from previous quarter	Percentage change from same quarter, previous year
Dec 2004	0.9	3.4
Mar 2005	0.3	4.2
Jun 2005	2.0	4.7
Sep 2005	2.9	6.1
Dec 2005	1.2	6.5
Mar 2006	0.9	7.2
Jun 2006	2.7	7.8
Sep 2006	2.0	6.9
Dec 2006	-0.3	5.3

Commodities

In the December 2006 quarter, the logs for export market index increased 12.4 percent. This is the fourth consecutive increase in the index and the largest quarterly increase since the series began in the June 1997 quarter. Respondents commonly cited the stronger New Zealand dollar, and supply and demand pressures as the main reasons for the rise this quarter. In the year to the December 2006 quarter, the logs for export market index rose 37.1 percent, compared with a rise of 7.2 percent in the year to the December 2005 quarter and a fall of 5.3 percent in the year to the December 2004 quarter.

The gas: commercial consumers index rose 7.5 percent in the December 2006 quarter, following rises of 0.8 percent in the September 2006 quarter and 1.7 percent in the June 2006 quarter. The latest rise is the largest quarterly rise since an increase of 9.4 percent in the March 2003 quarter. Higher prices for wholesale gas was the main driver behind the rise in the index in the latest quarter.

The livestock: sheep and lamb index rose 6.5 percent in the December 2006 quarter, following a rise of 13.3 percent in the September 2006 quarter. Increased wholesale prices for prime lambs was the main reason for the rise this quarter. In the year to the December 2006 quarter, the livestock: sheep and lamb index increased 1.0 percent, due to rises in the last two quarters more than offsetting the fall of 16.3 percent in the March 2006 quarter. The annual increase in the year to the December 2006 quarter is the first increase since a rise of 5.8 percent in the year to the June 2005 quarter.



In contrast to the livestock: sheep and lamb index, the processed meat: sheep and lamb index fell 11.0 percent, following consecutive quarterly increases of 8.4 percent, 4.9 percent and 0.1 percent in the September, June and March 2006 quarters, respectively. The main driver behind the fall in the latest quarter was lower export prices for lamb cuts. On an annual basis, the processed meat: sheep and lamb index rose 1.4 percent in the year to the December 2006 quarter, compared with a fall of 4.6 percent in the year to the December 2005 quarter.

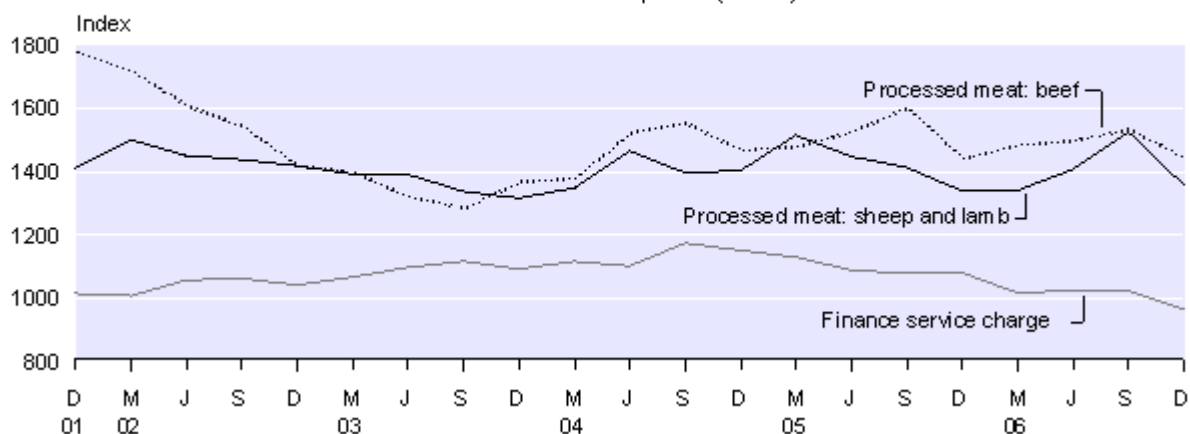
The processed meat: beef index also fell – down 5.9 percent in the December 2006 quarter. This is the first quarterly decrease in the index since a fall of 10.1 percent in the December 2005 quarter. Lower export prices for frozen beef cuts were the driver behind the fall this quarter. In the year to the December 2006 quarter, the processed meat: beef index rose 0.2 percent.

In the December 2006 quarter the finance service charge index fell 5.7 percent. Lower prices for financial intermediation services (due to increased competition among banks) was the main reason behind the fall this quarter. In the year to the December 2006 quarter, the finance service charge index fell 10.6 percent, the largest annual decrease since a fall of 16.3 percent in the year to the December 1995 quarter.

Selected Commodity Indexes

Processed meat: sheep and lamb; processed meat: beef; finance service charge

Base: December 1997 quarter (=1000)



Impact of exchange rates

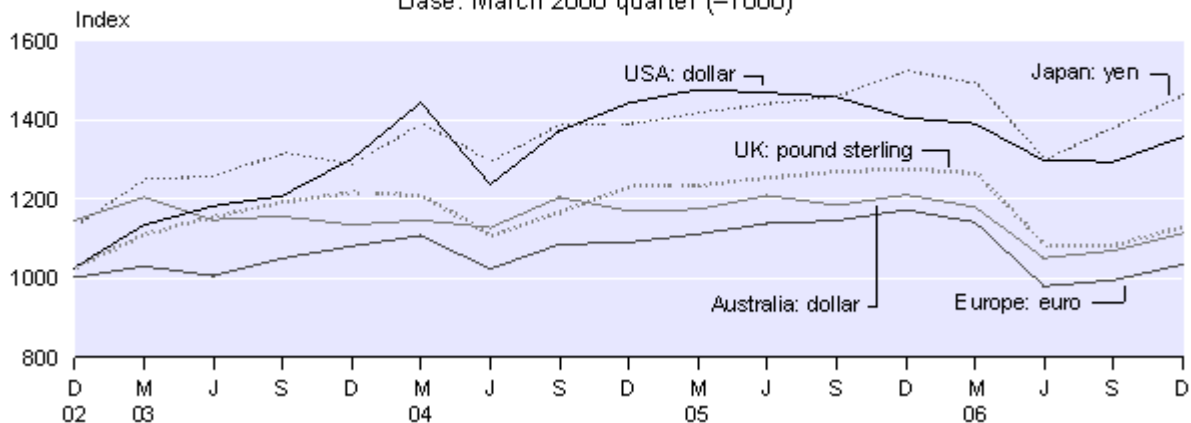
When calculating the PPI, prices collected on the fifteenth day of the middle month in the quarter are generally used to represent the entire quarter. Prices collected for imported goods are often denominated in foreign currencies. These are converted to New Zealand dollars using the exchange rate at the time of pricing.

The New Zealand dollar appreciated against the currencies of the country's five major trading partners in the December 2006 quarter. The table below shows changes in the value of the New Zealand dollar in foreign currency denominations from the September 2006 quarter to the December 2006 quarter.

Exchange Rates
(Published by Westpac Bank)
Bank selling rates for NZ\$1.00

	USA (NZ\$:US\$)	UK (NZ\$:pound sterling)	Australia (NZ\$:AUS\$)	Japan (NZ\$:yen)	Europe (NZ\$:euro)
15 August 2006	0.6236	0.3305	0.8225	72.4890	0.4892
15 November 2006	0.6539	0.3451	0.8557	76.7081	0.5088
Percentage change	4.9	4.4	4.0	5.8	4.0

Producers Price Index
Index of exchange rates
Base: March 2000 quarter (=1000)



For technical information contact:
Nicola Argyle or Daria Kwon
Wellington 04 931 4600
Email: info@stats.govt.nz

Price index developments

Statistics New Zealand is working on a progressive redevelopment of the Producers Price Index. This involves re-evaluation of the items that are priced within the indexes, and also the relative weights that are applied to them. This work began in 2004, and the first of the redeveloped published series took effect in the June 2006 quarter. Further redevelopments are introduced this quarter.

Series references and previous quarters' index numbers will remain unchanged, but the movements recorded from this quarter onwards will include this new data.

At this stage, the redevelopment applies only to output indexes, with redeveloped input indexes to be finalised once all of the output indexes have been redeveloped.

The redevelopment is based on the Annual Enterprise Survey and information obtained from companies involved in the industry.

The following output indexes are affected by redevelopments taking effect in the current quarter. More information can be found in the Technical notes of this release.

ANZIND reference	Description
C03	Other food manufacturing
I02	Rail transport
J011	Postal and courier services

For further information, please contact Patricia Jennings on 04 931 4600 or info@stats.govt.nz.

Technical notes

Price index interpretation

Price indexes are used to measure the changes in the level of prices, not the actual level of the prices themselves. The Producers Price Index (PPI) measures prices relating to the production sector of the economy. By comparison, the Consumers Price Index measures prices relating to the household sector and the Labour Cost Index measures prices in the labour market.

The PPI is made up of two types of indexes: the outputs index, which measures changes in the prices received by producers; and the inputs index, which measures changes in the cost of production (excluding labour and capital costs). The Farm Expenses Price Index (FEPI) measures price changes specific to the inputs into the farming industry.

PPI outputs index

The outputs index measures changes in prices received by producers.

The outputs index covers the prices of:

- primary products
- manufactured goods
- revenue from renting and leasing
- the provision of services
- capital work undertaken by own employees
- margins on goods purchased for resale.

The outputs index excludes:

- interest and dividends
- royalties and patent fees
- receipts from insurance claims
- government cash grants and subsidies
- goods and services tax (GST) and other indirect taxes.

These indexes are designed to measure price changes at a level corresponding to the prices received before the addition of commodity taxes or deduction of subsidies.

PPI inputs index

The inputs index measures price changes in costs of production, excluding labour and depreciation costs.

The inputs index covers the prices of:

- materials
- fuels and electricity
- transport and communication
- commission and contract services
- rent and lease of land, buildings, vehicles and plant
- business services
- insurance premiums less claims.

The inputs index excludes:

- wages and salaries (measured in the Labour Cost Index)
- capital expenditure/depreciation (measured in the Capital Goods Price Index)
- ACC levies, land tax, government licence fees, road user charges
- rates
- royalties, patent fees
- bad debts and donations.

GST is excluded when measuring input prices for 45 of the 47 industry inputs indexes. The assumption is made that those involved in activities in these industries are 'registered persons, or businesses' who provide 'taxable supply'. GST paid on intermediate consumption is recoverable under the GST credit offset system and therefore is effectively not part of the ultimate input price. Exceptions include the finance and ownership of owner-occupied dwellings indexes, which include some 'GST exempt' and non-recoverable GST activities. Interest costs are excluded because they are regarded as a cost of capital and not as a payment for a good or service.

Government charges are excluded when they are used to raise tax revenue rather than the payment for a good or service purchased from the government. This is consistent with the System of National Accounts.

Farm Expenses Price Index

The FEPI measures price changes of fixed inputs of goods and services to the farming industry. It does not fully measure changes in the production costs of farming. This is because production costs are not solely dependent on price movements, but are also dependent on factors that affect productivity, such as technological advances, management efficiency and climate fluctuations.

Capital expenditure and depreciation are not covered. (For price indexes of capital expenditure, refer to the Capital Goods Price Index.)

Coverage

The indexes are calculated quarterly from price quotes, which are collected mainly by postal survey. Approximately 13,000 individual commodity items are surveyed from about 3,000 respondents. Prices are generally collected each quarter, according to those prevailing on the fifteenth of the middle month of the quarter being measured. Prices may be obtained monthly or annually, depending on the nature of the item.

Calculation

The PPI and FEPI are Laspeyres base-weighted price index series. The weightings are determined by the relative importance of commodities and businesses within the industry or industry group. Information from various surveys and censuses and other sources is used to determine the weightings. Further information about this is available on request.

Industry classification

The PPI inputs and outputs indexes cover all the major market industry groups as defined by the Australian and New Zealand Standard Industrial Classification 1993 (ANZSIC). Index numbers for industry indexes based on this classification are available from the June 1994 quarter.

The all industries inputs index is made up of 47 industry indexes. Outputs indexes are not available for public administration and defence; education; health and community services;

cultural and recreational services; and personal and other services industries, as reliable estimates of output prices have yet to be developed.

Customised price indexes

Statistics NZ has a large number of unpublished sub-industry and representative commodity price indexes. These indexes are available at a small charge to cover dissemination costs.

Back series of indexes

Statistics NZ will provide tables of the complete back series of the current PPI and FEPI indexes on request.

Price index developments

The following is a detailed analysis of the output indexes affected by redevelopments taking place in the current quarter.

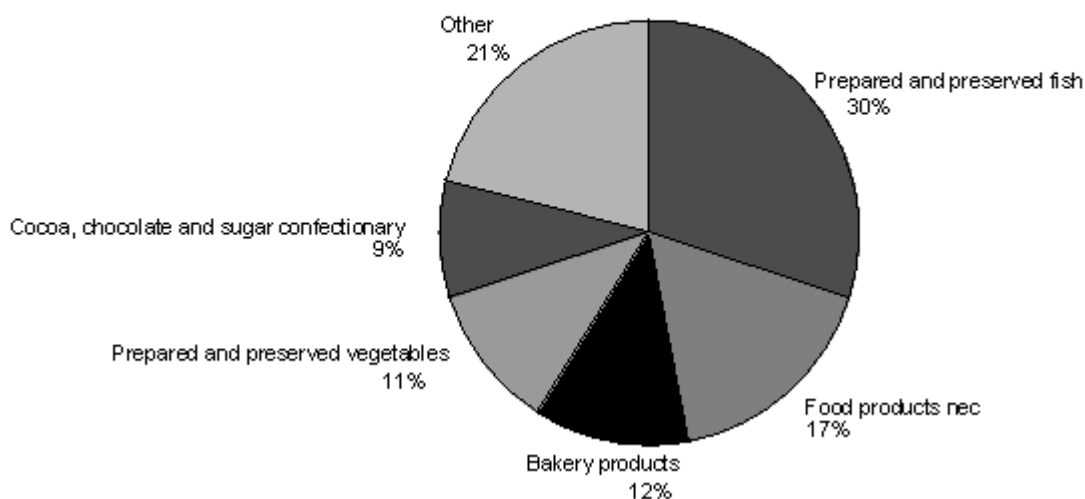
Other food manufacturing

The PPI for the other food manufacturing industry has been redeveloped, and takes effect from the December 2006 quarter. The index in this publication that is affected by the change is: PPIQ.SUC03 – Other Food Manufacturing Gross Outputs

The most significant change since the industry was last redeveloped in 1997 has been the expansion of food products not elsewhere classified. This was expected, due to the growth in sales of products such as ready-to-eat meals, which form a significant portion of this industry.

Output Commodity Weights for the Other Food Manufacturing Industry

At 30 September 2006



Note: Percentages may not sum to 100 due to rounding.

The 'other' group includes commodities such as sugar, pasta products, prepared fruit and nuts and grain mill products. More information is available on request.

Rail transport

The rail transport component of the other transport and storage series has been re-developed. Due to the size and number of contributors to this sub-series, details about the substance and nature of the redevelopment cannot be made available until the remaining sub-series have also been completed. It is anticipated that the September 2007 quarter publication will contain more details.

Communication services

The PPI for the communication services industry has been redeveloped, and takes effect from the March 2007 quarter. Implementation of the new index begins in the December 2006 quarter, and will be completed in the March 2007 quarter. Full documentation will be available at that time. The index in this publication that is affected by the changes is:

PPIQ.SUJ Communication Services

More information

For more information, follow the [link](#) from the Technical notes of this release on the Statistics New Zealand website.

Copyright

Information obtained from Statistics NZ may be freely used, reproduced, or quoted unless otherwise specified. In all cases Statistics NZ must be acknowledged as the source.

Liability

While care has been used in processing, analysing and extracting information, Statistics NZ gives no warranty that the information supplied is free from error. Statistics NZ shall not be liable for any loss suffered through the use, directly or indirectly, of any information, product or service.

Timing

Timed statistical releases are delivered using postal and electronic services provided by third parties. Delivery of these releases may be delayed by circumstances outside the control of Statistics NZ. Statistics NZ accepts no responsibility for any such delays.

Next release ...

Producers Price Index: March 2007 quarter will be released on 16 May 2007.

Statistics New Zealand: The first source of independent information for your key decisions.

Erratum

Revision to the Producers Price Index

Corrections have been made to the Producers Price Index (PPI) for the March 2007 quarter, December 2006 quarter and the September 2006 quarter. The error was due to incorrect calculation of price movements from the June 2006 quarter to the September 2006 quarter, which occurred while introducing new methodology.

The erratum affects the following indexes:

- PPI all industries outputs index
- electricity, gas and water outputs index
- electricity generation and supply outputs index.

The impact on the PPI all industries outputs index resulted in movements of 4–5 index points for each of the three revised quarters. However, the revision had greater impact on the electricity generation and supply index, and the electricity, gas and water index. The table below summarises the differences between what was originally published and the figures after revision.

Revision to the Producers Price Index				
		Outputs – index numbers Base: December 1997 Quarter (=1000)		
		Electricity, gas and water	Electricity generation and supply	All industries
<i>Series ref: PPIQ</i>		<i>SUD</i>	<i>SUD01</i>	<i>SU9</i>
Previously published figures				
Quarter	Sep 06	1363	1332	1261
	Dec 06	1304	1255	1255
	Mar 07	1270	1216	1252
After revision				
Quarter	Sep 06	1482	1469	1265
	Dec 06	1423	1391	1259
	Mar 07	1390	1353	1257

In the normal course of business, minor revisions are shown as a correction to the index levels in the following quarter. However, since the lower published-level indexes are significantly affected, along with a smaller effect on the published all industries index, this correction has been made promptly.

The PPI input indexes and the Consumers Price Index were not affected by the error in the electricity generation and supply index. The New Zealand Energy Statistics and Gross Domestic Product statistics are also unaffected by the error, due to different methodologies and, in some cases, data sources.

Statistics New Zealand apologises for any disruption this error causes to the wide range of users of the all industries PPI.

The Tables, Highlights and Commentary sections have been changed to reflect these revisions.

Geoff Bascand
Government Statistician

Tables

The following tables can be downloaded from the Statistics New Zealand website in Excel 97 format. If you do not have access to Excel 97 or higher, you may use the [Excel file viewer](#) to view, print and export the contents of the file.

List of tables

Producers Price Index

1. Producers Price Index, outputs – index numbers
2. Producers Price Index, inputs – index numbers
3. Producers Price Index, outputs, percentage change from previous quarter
4. Producers Price Index, inputs, percentage change from previous quarter
5. Producers Price Index, outputs – selected industries
6. Producers Price Index, inputs – selected industries
7. Producers Price Index, selected commodities – index numbers and percentage changes

Farm Expenses Price Index

- 1.01. Farm Expenses Price Index, all farms – index numbers
- 1.02. Farm Expenses Price Index, all farms, percentage change from previous quarter
- 1.03. Farm Expenses Price Index, all farms, percentage change from same quarter of the previous year
2. Farm Expenses Price Index, sheep and beef farms – index numbers
3. Farm Expenses Price Index, dairy farms – index numbers
4. Farm Expenses Price Index, horticultural farms – index numbers
5. Farm Expenses Price Index, cropping and other farms – index numbers

Producers Price Index: December 2006 quarter

Table 1

Producers Price Index
Outputs – index numbers
 Base: December 1997 quarter (=1000)

Industry group	Series ref: PPIQ	Quarter									
		2004	2005				2006				
		Dec	Mar	Jun	Sep	Dec	Mar	Jun	Sep	Dec	
A	Agriculture, forestry and fishing	<i>SUA</i>	1204	1172	1180	1214	1192	1140	1180	1265	1292
A01	Horticulture and fruit growing	<i>SUA01</i>	1336	1268	1258	1285	1318	1242	1342	1486	1578
A02	Livestock and cropping farming	<i>SUA02</i>	1394	1316	1336	1412	1339	1214	1257	1386	1408
A03	Dairy cattle farming	<i>SUA03</i>	1140	1130	1138	1162	1147	1128	1142	1220	1217
A04	Other farming	<i>SUA04</i>	1128	1108	1107	1116	1122	1074	1088	1151	1188
A05	Services to ag, hunting and trapping	<i>SUA05</i>	1257	1262	1272	1297	1321	1340	1357	1380	1397
A06	Forestry and logging	<i>SUA06</i>	874	904	905	897	895	913	947	969	1009
A07	Fishing	<i>SUA07</i>	1217	1197	1209	1232	1221	1218	1267	1285	1264
B	Mining	<i>SUB</i>	1463	1441	1547	1606	1729	1764	2049	2040	1915
C	Manufacturing	<i>SUC</i>	1165	1180	1193	1208	1201	1213	1258	1265	1252
C01	Meat and meat product mfg	<i>SUC01</i>	1218	1252	1251	1274	1181	1195	1233	1291	1212
C02	Dairy product mfg	<i>SUC02</i>	1208	1233	1284	1331	1310	1358	1421	1358	1296
C03	Other food mfg	<i>SUC03</i>	1188	1194	1190	1197	1217	1223	1240	1252	1270
C04 C05	Tobacco, beverage and malt mfg ⁽¹⁾	<i>SUC04</i>	1287	1301	1303	1329	1328	1332	1342	1348	1350
C06	Textile and apparel mfg	<i>SUC06</i>	1068	1057	1054	1053	1034	1035	1058	1054	1047
C07	Wood product mfg	<i>SUC07</i>	1041	1042	1062	1064	1079	1096	1113	1122	1117
C08	Paper and paper product mfg	<i>SUC08</i>	1062	1060	1061	1055	1066	1061	1128	1146	1143
C09	Printing, publishing and recorded media	<i>SUC09</i>	1271	1287	1299	1308	1310	1314	1318	1324	1310
C10	Petroleum, coal and basic chemical mfg	<i>SUC10</i>	1233	1215	1247	1296	1335	1260	1476	1426	1341
C11	Rubber plastics and other chemical mfg	<i>SUC11</i>	1143	1152	1165	1170	1159	1165	1170	1189	1213
C12	Non-metallic mineral product mfg	<i>SUC12</i>	1134	1172	1179	1193	1201	1213	1218	1223	1234
C13	Basic metal mfg	<i>SUC13</i>	1098	1248	1205	1213	1199	1222	1305	1339	1371
C14	Sheet and fabricated metal product mfg	<i>SUC14</i>	1114	1129	1163	1189	1196	1203	1203	1267	1311
C15	Transport equipment mfg	<i>SUC15</i>	1106	1113	1123	1125	1120	1138	1197	1210	1182
C16	Machinery and equipment mfg	<i>SUC16</i>	1210	1209	1232	1236	1251	1300	1394	1396	1402
C17	Other manufacturing	<i>SUC17</i>	1149	1155	1169	1171	1175	1183	1195	1210	1206
D	Electricity, gas and water ⁽²⁾	<i>SUD</i>	1172	1209	1262	1365	1474	1561	1551	1482 R	1423 R
D01	Electricity generation and supply	<i>SUD01</i>	1148	1179	1242	1360	1480	1570	1556	1469 R	1391 R
D02	Gas supply	<i>SUD02</i>	1457	1579	1559	1545	1595	1696	1738	1816	1923
E	Construction ⁽³⁾	<i>SUE</i>	1216	1229	1248	1272	1287	1305	1319	1350	1363
F	Wholesale trade ⁽³⁾	<i>SUF</i>	1172	1174	1195	1230	1219	1238	1307	1315	1298
G	Retail trade ⁽³⁾	<i>SUG</i>	1124	1129	1136	1149	1149	1157	1177	1181	1170
H	Accommodation, cafes and restaurants ⁽³⁾	<i>SUH</i>	1180	1192	1186	1197	1212	1223	1223	1241	1254
I	Transport and storage	<i>SUI</i>	1161	1163	1172	1193	1198	1209	1261	1276	1279
I01	Road transport	<i>SUI01</i>	1169	1179	1190	1207	1227	1251	1273	1289	1294
I03	Water transport	<i>SUI03</i>	1009	1013	1044	1073	1073	1126	1143	1141	1093
I04	Air transport	<i>SUI04</i>	1173	1169	1181	1210	1201	1202	1308	1302	1296
I02 I09	Rail, other transport and storage services ⁽⁴⁾	<i>SUI09</i>	1162	1161	1162	1176	1182	1184	1211	1255	1272
J	Communication services ⁽³⁾	<i>SUJ</i>	888	886	886	904	906	912	918	923	916

For footnotes, see end of table.

Producers Price Index: December 2006 quarter

Table 1
continued

Producers Price Index
Outputs – index numbers
Base: December 1997 quarter (=1000)

Industry group	Series ref: PPIQ	Quarter									
		2004		2005				2006			
		Dec	Mar	Jun	Sep	Dec	Mar	Jun	Sep	Dec	
K Finance and insurance	<i>SUK</i>	1215	1210	1198	1199	1205	1187	1191	1192	1177	
K01 Finance	<i>SUK01</i>	1199	1187	1162	1158	1168	1132	1136	1136	1101	
K02 Insurance	<i>SUK02</i>	1190	1187	1197	1192	1192	1198	1190	1200	1202	
K03 Services to finance and insurance	<i>SUK03</i>	1357	1380	1384	1430	1420	1451	1476	1467	1523	
L Property and business services	<i>SUL</i>	1142	1152	1166	1175	1179	1188	1197	1202	1211	
L01 Real estate	<i>SUL01</i>	1130	1142	1161	1179	1187	1198	1211	1216	1228	
L02 Ownership of owner-occupied dwellings	<i>SUL02</i>	1104	1108	1115	1122	1123	1132	1137	1137	1145	
L03 Other property services	<i>SUL03</i>	1037	1059	1043	1048	1070	1078	1073	1086	1114	
L04 Business services	<i>SUL04</i>	1190	1204	1223	1228	1233	1239	1252	1260	1267	
P Cultural and recreational services⁽³⁾	<i>SUP</i>	1266	1276	1288	1300	1311	1316	1325	1339	1346	
Q Personal and other services⁽³⁾	<i>SUQ</i>	1205	1213	1221	1250	1256	1268	1270	1294	1297	
X01 Agriculture	<i>SUX01</i>	1283	1232	1242	1287	1257	1180	1221	1332	1359	
X05 Food, beverages and tobacco	<i>SUX05</i>	1213	1234	1249	1275	1247	1268	1305	1306	1269	
X08 Paper, printing and publishing	<i>SUX08</i>	1168	1175	1182	1184	1190	1189	1224	1236	1228	
X09 Chemicals, petroleum and plastics	<i>SUX09</i>	1178	1176	1198	1220	1228	1202	1290	1282	1263	
X12 Machinery and metal products	<i>SUX12</i>	1163	1169	1194	1206	1216	1245	1299	1326	1341	
9 ALL INDUSTRIES	<i>SU9</i>	1166	1172	1186	1207	1211	1219	1252	1265 R	1259 R	

(1) Tobacco product manufacturing has been combined with beverage and malt manufacturing for confidentiality reasons.

(2) The Water supply industry index is not of sufficient quality and a separate index for it is not published.

(3) The series reference has changed, as at the June 2000 quarter, for consistency with series references for other divisions. The composition of this index is unchanged.

(4) Rail transport has been combined with other transport and storage services for confidentiality reasons.

Symbol

R revised

Producers Price Index: December 2006 quarter

Table 2

Producers Price Index
Inputs – index numbers
 Base: December 1997 quarter (=1000)

Industry group	Series ref: PPIQ	Quarter									
		2004	2005				2006				
		Dec	Mar	Jun	Sep	Dec	Mar	Jun	Sep	Dec	
A	Agriculture, forestry and fishing	<i>SNA</i>	1202	1215	1237	1263	1261	1266	1291	1301	1287
A01	Horticulture and fruit growing	<i>SNA01</i>	1173	1178	1198	1221	1219	1230	1254	1262	1248
A02	Sheep and beef farming ⁽¹⁾	<i>SNA02</i>	1310	1330	1353	1385	1385	1383	1406	1415	1386
A03	Dairy cattle farming	<i>SNA03</i>	1240	1247	1283	1316	1315	1326	1353	1365	1356
A04	Cropping and other farming ⁽¹⁾	<i>SNA04</i>	1210	1242	1259	1282	1260	1268	1275	1282	1270
A05	Services to ag, hunting and trapping	<i>SNA05</i>	1270	1278	1302	1340	1341	1355	1395	1406	1399
A06	Forestry and logging	<i>SNA06</i>	1009	1017	1034	1043	1042	1045	1073	1082	1085
A07	Fishing	<i>SNA07</i>	1140	1129	1137	1167	1162	1177	1218	1236	1221
B	Mining	<i>SNB</i>	1188	1195	1214	1234	1255	1269	1329	1355	1369
C	Manufacturing	<i>SNC</i>	1160	1154	1166	1185	1187	1177	1212	1255	1260
C01	Meat and meat product mfg	<i>SNC01</i>	1318	1240	1263	1359	1295	1163	1211	1363	1377
C02	Dairy product mfg	<i>SNC02</i>	1114	1116	1119	1130	1133	1134	1139	1188	1184
C03	Other food mfg	<i>SNC03</i>	1142	1132	1143	1160	1172	1168	1211	1240	1246
C04 C05	Tobacco, beverage and malt mfg ⁽²⁾	<i>SNC04</i>	1204	1220	1231	1270	1279	1285	1285	1302	1311
C06	Textile and apparel mfg	<i>SNC06</i>	999	983	991	991	984	979	1012	1025	1037
C07	Wood product mfg	<i>SNC07</i>	1013	1023	1028	1030	1037	1043	1065	1081	1086
C08	Paper and paper product mfg	<i>SNC08</i>	1136	1139	1149	1155	1164	1158	1213	1232	1230
C09	Printing, publishing and recorded media	<i>SNC09</i>	1138	1137	1132	1142	1145	1151	1168	1205	1205
C10	Petroleum, coal and basic chemical mfg	<i>SNC10</i>	1232	1274	1326	1331	1353	1385	1409	1457	1464
C11	Rubber plastics and other chemical mfg	<i>SNC11</i>	1151	1176	1190	1198	1200	1212	1229	1253	1255
C12	Non-metallic mineral product mfg	<i>SNC12</i>	1187	1210	1221	1240	1251	1269	1299	1309	1301
C13	Basic metal mfg	<i>SNC13</i>	1338	1320	1294	1281	1337	1354	1497	1478	1466
C14	Sheet and fabricated metal product mfg	<i>SNC14</i>	1152	1141	1172	1198	1214	1214	1295	1322	1333
C15	Transport equipment mfg	<i>SNC15</i>	1121	1121	1128	1134	1145	1147	1163	1171	1170
C16	Machinery and equipment mfg	<i>SNC16</i>	1204	1206	1213	1220	1236	1253	1294	1359	1375
C17	Other manufacturing	<i>SNC17</i>	1125	1130	1140	1150	1159	1169	1197	1206	1209
D	Electricity, gas and water⁽³⁾	<i>SND</i>	1098	1142	1202	1344	1481	1604	1469	1306	1175
D01	Electricity generation and supply	<i>SND01</i>	1083	1124	1196	1364	1517	1651	1478	1283	1137
D02	Gas supply	<i>SND02</i>	1190	1304	1270	1250	1333	1440	1570	1583	1473
E	Construction⁽⁴⁾	<i>SNE</i>	1238	1253	1285	1310	1327	1364	1407	1467	1473
F	Wholesale trade⁽⁴⁾	<i>SNF</i>	1268	1279	1340	1458	1496	1507	1620	1678	1682
G	Retail trade⁽⁴⁾	<i>SNG</i>	1159	1162	1170	1184	1196	1200	1221	1232	1233
H	Accommodation, cafes and restaurants⁽⁴⁾	<i>SNH</i>	1174	1175	1182	1196	1204	1200	1222	1236	1253
I	Transport and storage	<i>SNI</i>	1298	1269	1340	1377	1420	1456	1526	1561	1520
I01	Road transport	<i>SNI01</i>	1251	1262	1292	1343	1368	1420	1484	1544	1507
I03	Water transport	<i>SNI03</i>	1114	1121	1144	1183	1208	1227	1257	1253	1238
I04	Air transport	<i>SNI04</i>	1445	1357	1499	1535	1608	1643	1747	1782	1713
I02 I09	Rail, other transport and storage services ⁽⁵⁾	<i>SNI09</i>	1145	1158	1166	1188	1205	1228	1252	1265	1261
J	Communication services⁽⁴⁾	<i>SNJ</i>	1022	1030	1037	1046	1049	1062	1084	1101	1093

For footnotes, see end of table.

Producers Price Index: December 2006 quarter

Table 2
continued

Producers Price Index
Inputs – index numbers
Base: December 1997 quarter (=1000)

Industry group	Series ref: PPIQ	Quarter									
		2004	2005				2006				
		Dec	Mar	Jun	Sep	Dec	Mar	Jun	Sep	Dec	
K	Finance and insurance	<i>SNK</i>	1154	1160	1168	1178	1185	1194	1211	1218	1223
K01	Finance	<i>SNK01</i>	1148	1156	1162	1173	1181	1188	1207	1213	1220
K02	Insurance	<i>SNK02</i>	1162	1165	1175	1182	1189	1200	1209	1216	1218
K03	Services to finance and insurance	<i>SNK03</i>	1160	1167	1177	1189	1196	1209	1233	1245	1248
L	Property and business services	<i>SNL</i>	1175	1181	1198	1211	1221	1234	1249	1264	1270
L01	Real estate	<i>SNL01</i>	1219	1232	1261	1281	1291	1309	1327	1340	1345
L02	Ownership of owner-occupied dwellings	<i>SNL02</i>	1196	1202	1213	1239	1250	1268	1283	1320	1333
L03	Other property services	<i>SNL03</i>	1195	1198	1215	1228	1242	1259	1283	1304	1307
L04	Business services	<i>SNL04</i>	1151	1156	1170	1178	1187	1196	1209	1218	1222
M	Public administration and defence ⁽⁴⁾⁽⁶⁾	<i>SNM</i>	1169	1180	1192	1207	1215	1226	1245	1255	1253
M01	Central government and defence ⁽⁷⁾⁽⁸⁾	<i>SNM01</i>	1152	1162	1172	1186	1194	1202	1217	1225	1226
M02	Local government and civil defence ⁽⁹⁾	<i>SNM02</i>	1191	1203	1219	1234	1243	1257	1281	1294	1289
N	Education ⁽⁴⁾	<i>SNN</i>	1133	1140	1149	1158	1163	1169	1181	1188	1192
O	Health and community services ⁽⁴⁾	<i>SNO</i>	1129	1134	1150	1160	1167	1173	1191	1197	1201
P	Cultural and recreational services ⁽⁴⁾	<i>SNP</i>	1154	1158	1175	1184	1193	1203	1216	1225	1228
Q	Personal and other services ⁽⁴⁾	<i>SNQ</i>	1213	1222	1232	1266	1276	1307	1327	1354	1358
X01	Agriculture	<i>SNX01</i>	1258	1274	1299	1330	1326	1331	1353	1362	1343
X05	Food, beverage and tobacco	<i>SNX05</i>	1188	1165	1177	1216	1203	1165	1193	1263	1268
X08	Paper, printing and publishing	<i>SNX08</i>	1137	1138	1141	1149	1155	1155	1192	1219	1218
X09	Chemicals, petroleum and plastics	<i>SNX09</i>	1183	1214	1244	1250	1260	1280	1300	1333	1337
X12	Machinery and metal products	<i>SNX12</i>	1178	1175	1191	1204	1219	1228	1279	1323	1334
8	All industries excl admin health education	<i>SN8</i>	1187	1190	1215	1251	1267	1278	1313	1341	1336
9	ALL INDUSTRIES	<i>SN9</i>	1185	1188	1212	1247	1262	1273	1307	1333	1329

- (1) Agriculture input indexes by farm type are based on Farm Expenses Price Index (FEPI) categories, not ANZSIC categories. Output Agriculture indexes by farm type are based on ANZSIC.
- (2) Tobacco product manufacturing has been combined with beverage and malt manufacturing for confidentiality reasons.
- (3) The water supply industry index is not of sufficient quality and a separate index for it is not published.
- (4) The series reference has changed, as at the June 2000 quarter, for consistency with series references for other divisions. The composition of this index is unchanged.
- (5) Rail transport has been combined with other transport and storage services for confidentiality reasons.
- (6) The official industry group title of government administration, defence, public order and safety services has been abbreviated to public administration and defence in this publication.
- (7) The series reference PPIQ.SNM01 was published prior to the June 2000 quarter and differs from this series. The series for government administration, defence, public order and safety service, which includes both central and local government services, is now published with the series reference PPIQ.SNM.
- (8) The official sub-industry group title of central government administration, defence, public order and safety services has been abbreviated to central government and defence in this publication.
- (9) The official sub-industry group title of local government administration services and civil defence has been abbreviated to local government and civil defence in this publication.

Producers Price Index: December 2006 quarter

Table 3

Producers Price Index
Outputs
Percentage change from previous quarter

Industry group	Series ref: PPIQ	Quarter									
		2004	2005				2006				
		Dec	Mar	Jun	Sep	Dec	Mar	Jun	Sep	Dec	
A	Agriculture, forestry and fishing	<i>SUA</i>	-0.5	-2.7	0.7	2.9	-1.8	-4.4	3.5	7.2	2.1
A01	Horticulture and fruit growing	<i>SUA01</i>	2.5	-5.1	-0.8	2.1	2.6	-5.8	8.1	10.7	6.2
A02	Livestock and cropping farming	<i>SUA02</i>	-1.1	-5.6	1.5	5.7	-5.2	-9.3	3.5	10.3	1.6
A03	Dairy cattle farming	<i>SUA03</i>	-0.3	-0.9	0.7	2.1	-1.3	-1.7	1.2	6.8	-0.2
A04	Other farming	<i>SUA04</i>	2.0	-1.8	-0.1	0.8	0.5	-4.3	1.3	5.8	3.2
A05	Services to ag, hunting and trapping	<i>SUA05</i>	1.1	0.4	0.8	2.0	1.9	1.4	1.3	1.7	1.2
A06	Forestry and logging	<i>SUA06</i>	-4.5	3.4	0.1	-0.9	-0.2	2.0	3.7	2.3	4.1
A07	Fishing	<i>SUA07</i>	1.3	-1.6	1.0	1.9	-0.9	-0.2	4.0	1.4	-1.6
B	Mining	<i>SUB</i>	5.9	-1.5	7.4	3.8	7.7	2.0	16.2	-0.4	-6.1
C	Manufacturing	<i>SUC</i>	0.2	1.3	1.1	1.3	-0.6	1.0	3.7	0.6	-1.0
C01	Meat and meat product mfg	<i>SUC01</i>	-3.3	2.8	-0.1	1.8	-7.3	1.2	3.2	4.7	-6.1
C02	Dairy product mfg	<i>SUC02</i>	2.1	2.1	4.1	3.7	-1.6	3.7	4.6	-4.4	-4.6
C03	Other food mfg	<i>SUC03</i>	-0.1	0.5	-0.3	0.6	1.7	0.5	1.4	1.0	1.4
C04 C05	Tobacco, beverage and malt mfg ⁽¹⁾	<i>SUC04</i>	0.6	1.1	0.2	2.0	-0.1	0.3	0.8	0.4	0.1
C06	Textile and apparel mfg	<i>SUC06</i>	-1.3	-1.0	-0.3	-0.1	-1.8	0.1	2.2	-0.4	-0.7
C07	Wood product mfg	<i>SUC07</i>	0.3	0.1	1.9	0.2	1.4	1.6	1.6	0.8	-0.4
C08	Paper and paper product mfg	<i>SUC08</i>	-1.4	-0.2	0.1	-0.6	1.0	-0.5	6.3	1.6	-0.3
C09	Printing, publishing and recorded media	<i>SUC09</i>	0.2	1.3	0.9	0.7	0.2	0.3	0.3	0.5	-1.1
C10	Petroleum, coal and basic chemical mfg	<i>SUC10</i>	0.7	-1.5	2.6	3.9	3.0	-5.6	17.1	-3.4	-6.0
C11	Rubber plastics and other chemical mfg	<i>SUC11</i>	2.2	0.8	1.1	0.4	-0.9	0.5	0.4	1.6	2.0
C12	Non-metallic mineral product mfg	<i>SUC12</i>	0.9	3.4	0.6	1.2	0.7	1.0	0.4	0.4	0.9
C13	Basic metal mfg	<i>SUC13</i>	0.7	13.7	-3.4	0.7	-1.2	1.9	6.8	2.6	2.4
C14	Sheet and fabricated metal product mfg	<i>SUC14</i>	1.2	1.3	3.0	2.2	0.6	0.6	0.0	5.3	3.5
C15	Transport equipment mfg	<i>SUC15</i>	0.4	0.6	0.9	0.2	-0.4	1.6	5.2	1.1	-2.3
C16	Machinery and equipment mfg	<i>SUC16</i>	1.3	-0.1	1.9	0.3	1.2	3.9	7.2	0.1	0.4
C17	Other manufacturing	<i>SUC17</i>	0.2	0.5	1.2	0.2	0.3	0.7	1.0	1.3	-0.3
D	Electricity, gas and water ⁽²⁾	<i>SUD</i>	1.8	3.2	4.4	8.2	8.0	5.9	-0.6	-4.4 R	-4.0 R
D01	Electricity generation and supply	<i>SUD01</i>	1.7	2.7	5.3	9.5	8.8	6.1	-0.9	-5.6 R	-5.3 R
D02	Gas supply	<i>SUD02</i>	4.6	8.4	-1.3	-0.9	3.2	6.3	2.5	4.5	5.9
E	Construction ⁽³⁾	<i>SUE</i>	1.1	1.1	1.5	1.9	1.2	1.4	1.1	2.4	1.0
F	Wholesale trade ⁽³⁾	<i>SUF</i>	0.3	0.2	1.8	2.9	-0.9	1.6	5.6	0.6	-1.3
G	Retail trade ⁽³⁾	<i>SUG</i>	0.4	0.4	0.6	1.1	0.0	0.7	1.7	0.3	-0.9
H	Accommodation, cafes and restaurants ⁽³⁾	<i>SUH</i>	1.3	1.0	-0.5	0.9	1.3	0.9	0.0	1.5	1.0
I	Transport and storage	<i>SUI</i>	0.8	0.2	0.8	1.8	0.4	0.9	4.3	1.2	0.2
I01	Road transport	<i>SUI01</i>	1.0	0.9	0.9	1.4	1.7	2.0	1.8	1.3	0.4
I03	Water transport	<i>SUI03</i>	-2.5	0.4	3.1	2.8	0.0	4.9	1.5	-0.2	-4.2
I04	Air transport	<i>SUI04</i>	1.1	-0.3	1.0	2.5	-0.7	0.1	8.8	-0.5	-0.5
I02 I09	Rail, other transport and storage services ⁽⁴⁾	<i>SUI09</i>	0.6	-0.1	0.1	1.2	0.5	0.2	2.3	3.6	1.4
J	Communication services ⁽³⁾	<i>SUJ</i>	0.5	-0.2	0.0	2.0	0.2	0.7	0.7	0.5	-0.8

For footnotes, see end of table.

Producers Price Index: December 2006 quarter

Table 3
continued

Producers Price Index
Outputs
Percentage change from previous quarter

Industry group	Series ref: PPIQ	Quarter									
		2004	2005				2006				
		Dec	Mar	Jun	Sep	Dec	Mar	Jun	Sep	Dec	
K	Finance and insurance	<i>SUK</i>	0.3	-0.4	-1.0	0.1	0.5	-1.5	0.3	0.1	-1.3
K01	Finance	<i>SUK01</i>	-0.7	-1.0	-2.1	-0.3	0.9	-3.1	0.4	0.0	-3.1
K02	Insurance	<i>SUK02</i>	0.8	-0.3	0.8	-0.4	0.0	0.5	-0.7	0.8	0.2
K03	Services to finance and insurance	<i>SUK03</i>	4.4	1.7	0.3	3.3	-0.7	2.2	1.7	-0.6	3.8
L	Property and business services	<i>SUL</i>	0.5	0.9	1.2	0.8	0.3	0.8	0.8	0.4	0.7
L01	Real estate	<i>SUL01</i>	0.4	1.1	1.7	1.6	0.7	0.9	1.1	0.4	1.0
L02	Ownership of owner-occupied dwellings	<i>SUL02</i>	0.4	0.4	0.6	0.6	0.1	0.8	0.4	0.0	0.7
L03	Other property services	<i>SUL03</i>	0.7	2.1	-1.5	0.5	2.1	0.7	-0.5	1.2	2.6
L04	Business services	<i>SUL04</i>	0.6	1.2	1.6	0.4	0.4	0.5	1.0	0.6	0.6
P	Cultural and recreational services⁽³⁾	<i>SUP</i>	0.7	0.8	0.9	0.9	0.8	0.4	0.7	1.1	0.5
Q	Personal and other services⁽³⁾	<i>SUQ</i>	0.8	0.7	0.7	2.4	0.5	1.0	0.2	1.9	0.2
X01	Agriculture	<i>SUX01</i>	0.0	-4.0	0.8	3.6	-2.3	-6.1	3.5	9.1	2.0
X05	Food, beverages and tobacco	<i>SUX05</i>	-0.3	1.7	1.2	2.1	-2.2	1.7	2.9	0.1	-2.8
X08	Paper, printing and publishing	<i>SUX08</i>	-0.5	0.6	0.6	0.2	0.5	-0.1	2.9	1.0	-0.6
X09	Chemicals, petroleum and plastics	<i>SUX09</i>	1.6	-0.2	1.9	1.8	0.7	-2.1	7.3	-0.6	-1.5
X12	Machinery and metal products	<i>SUX12</i>	1.1	0.5	2.1	1.0	0.8	2.4	4.3	2.1	1.1
9	ALL INDUSTRIES	<i>SU9</i>	0.5	0.5	1.2	1.8	0.3	0.7	2.7	1.0 R	-0.5 R

- (1) Tobacco product manufacturing has been combined with beverage and malt manufacturing for confidentiality reasons.
(2) The water supply industry index is not of sufficient quality and a separate index for it is not published.
(3) The series reference has changed, as at the June 2000 quarter, for consistency with series references for other divisions. The composition of this index is unchanged.
(4) Rail transport has been combined with other transport and storage services for confidentiality reasons.

Symbol

R revised

Producers Price Index: December 2006 quarter

Table 4

Producers Price Index
Inputs
Percentage change from previous quarter

Industry group	Series ref: PPIQ	Quarter									
		2004	2005				2006				
		Dec	Mar	Jun	Sep	Dec	Mar	Jun	Sep	Dec	
A	Agriculture, forestry and fishing	<i>SNA</i>	0.8	1.1	1.8	2.1	-0.2	0.4	2.0	0.8	-1.1
A01	Horticulture and fruit growing	<i>SNA01</i>	0.8	0.4	1.7	1.9	-0.2	0.9	2.0	0.6	-1.1
A02	Sheep and beef farming ⁽¹⁾	<i>SNA02</i>	1.1	1.5	1.7	2.4	0.0	-0.1	1.7	0.6	-2.0
A03	Dairy cattle farming	<i>SNA03</i>	0.8	0.6	2.9	2.6	-0.1	0.8	2.0	0.9	-0.7
A04	Cropping and other farming ⁽¹⁾	<i>SNA04</i>	1.9	2.6	1.4	1.8	-1.7	0.6	0.6	0.5	-0.9
A05	Services to ag, hunting and trapping	<i>SNA05</i>	0.6	0.6	1.9	2.9	0.1	1.0	3.0	0.8	-0.5
A06	Forestry and logging	<i>SNA06</i>	-0.2	0.8	1.7	0.9	-0.1	0.3	2.7	0.8	0.3
A07	Fishing	<i>SNA07</i>	1.8	-1.0	0.7	2.6	-0.4	1.3	3.5	1.5	-1.2
B	Mining	<i>SNB</i>	0.6	0.6	1.6	1.6	1.7	1.1	4.7	2.0	1.0
C	Manufacturing	<i>SNC</i>	0.5	-0.5	1.0	1.6	0.2	-0.8	3.0	3.5	0.4
C01	Meat and meat product mfg	<i>SNC01</i>	-0.4	-5.9	1.9	7.6	-4.7	-10.2	4.1	12.6	1.0
C02	Dairy product mfg	<i>SNC02</i>	0.4	0.2	0.3	1.0	0.3	0.1	0.4	4.3	-0.3
C03	Other food mfg	<i>SNC03</i>	1.8	-0.9	1.0	1.5	1.0	-0.3	3.7	2.4	0.5
C04 C05	Tobacco, beverage and malt mfg ⁽²⁾	<i>SNC04</i>	0.7	1.3	0.9	3.2	0.7	0.5	0.0	1.3	0.7
C06	Textile and apparel mfg	<i>SNC06</i>	-2.1	-1.6	0.8	0.0	-0.7	-0.5	3.4	1.3	1.2
C07	Wood product mfg	<i>SNC07</i>	-2.1	1.0	0.5	0.2	0.7	0.6	2.1	1.5	0.5
C08	Paper and paper product mfg	<i>SNC08</i>	-0.3	0.3	0.9	0.5	0.8	-0.5	4.7	1.6	-0.2
C09	Printing, publishing and recorded media	<i>SNC09</i>	0.5	-0.1	-0.4	0.9	0.3	0.5	1.5	3.2	0.0
C10	Petroleum, coal and basic chemical mfg	<i>SNC10</i>	0.7	3.4	4.1	0.4	1.7	2.4	1.7	3.4	0.5
C11	Rubber plastics and other chemical mfg	<i>SNC11</i>	2.2	2.2	1.2	0.7	0.2	1.0	1.4	2.0	0.2
C12	Non-metallic mineral product mfg	<i>SNC12</i>	0.8	1.9	0.9	1.6	0.9	1.4	2.4	0.8	-0.6
C13	Basic metal mfg	<i>SNC13</i>	2.2	-1.3	-2.0	-1.0	4.4	1.3	10.6	-1.3	-0.8
C14	Sheet and fabricated metal product mfg	<i>SNC14</i>	1.4	-1.0	2.7	2.2	1.3	0.0	6.7	2.1	0.8
C15	Transport equipment mfg	<i>SNC15</i>	0.6	0.0	0.6	0.5	1.0	0.2	1.4	0.7	-0.1
C16	Machinery and equipment mfg	<i>SNC16</i>	1.2	0.2	0.6	0.6	1.3	1.4	3.3	5.0	1.2
C17	Other manufacturing	<i>SNC17</i>	0.4	0.4	0.9	0.9	0.8	0.9	2.4	0.8	0.2
D	Electricity, gas and water⁽³⁾	<i>SND</i>	-0.5	4.0	5.3	11.8	10.2	8.3	-8.4	-11.1	-10.0
D01	Electricity generation and supply	<i>SND01</i>	-1.0	3.8	6.4	14.0	11.2	8.8	-10.5	-13.2	-11.4
D02	Gas supply	<i>SND02</i>	2.9	9.6	-2.6	-1.6	6.6	8.0	9.0	0.8	-6.9
E	Construction⁽⁴⁾	<i>SNE</i>	1.3	1.2	2.6	1.9	1.3	2.8	3.2	4.3	0.4
F	Wholesale trade⁽⁴⁾	<i>SNF</i>	0.2	0.9	4.8	8.8	2.6	0.7	7.5	3.6	0.2
G	Retail trade⁽⁴⁾	<i>SNG</i>	1.0	0.3	0.7	1.2	1.0	0.3	1.8	0.9	0.1
H	Accommodation, cafes and restaurants⁽⁴⁾	<i>SNH</i>	0.9	0.1	0.6	1.2	0.7	-0.3	1.8	1.1	1.4
I	Transport and storage	<i>SNI</i>	3.7	-2.2	5.6	2.8	3.1	2.5	4.8	2.3	-2.6
I01	Road transport	<i>SNI01</i>	2.5	0.9	2.4	3.9	1.9	3.8	4.5	4.0	-2.4
I03	Water transport	<i>SNI03</i>	1.1	0.6	2.1	3.4	2.1	1.6	2.4	-0.3	-1.2
I04	Air transport	<i>SNI04</i>	5.6	-6.1	10.5	2.4	4.8	2.2	6.3	2.0	-3.9
I02 I09	Rail, other transport and storage services ⁽⁵⁾	<i>SNI09</i>	2.2	1.1	0.7	1.9	1.4	1.9	2.0	1.0	-0.3
J	Communication services⁽⁴⁾	<i>SNJ</i>	0.8	0.8	0.7	0.9	0.3	1.2	2.1	1.6	-0.7

For footnotes, see end of table.

Producers Price Index: December 2006 quarter

Table 4
continued

Producers Price Index
Inputs
Percentage change from previous quarter

Industry group	Series ref: PPIQ	Quarter									
		2004	2005				2006				
		Dec	Mar	Jun	Sep	Dec	Mar	Jun	Sep	Dec	
K Finance and insurance	<i>SNK</i>	0.6	0.5	0.7	0.9	0.6	0.8	1.4	0.6	0.4	
K01 Finance	<i>SNK01</i>	0.5	0.7	0.5	0.9	0.7	0.6	1.6	0.5	0.6	
K02 Insurance	<i>SNK02</i>	0.8	0.3	0.9	0.6	0.6	0.9	0.8	0.6	0.2	
K03 Services to finance and insurance	<i>SNK03</i>	0.8	0.6	0.9	1.0	0.6	1.1	2.0	1.0	0.2	
L Property and business services	<i>SNL</i>	0.9	0.5	1.4	1.1	0.8	1.1	1.2	1.2	0.5	
L01 Real estate	<i>SNL01</i>	0.6	1.1	2.4	1.6	0.8	1.4	1.4	1.0	0.4	
L02 Ownership of owner-occupied dwellings	<i>SNL02</i>	1.0	0.5	0.9	2.1	0.9	1.4	1.2	2.9	1.0	
L03 Other property services	<i>SNL03</i>	1.6	0.3	1.4	1.1	1.1	1.4	1.9	1.6	0.2	
L04 Business services	<i>SNL04</i>	0.8	0.4	1.2	0.7	0.8	0.8	1.1	0.7	0.3	
M Public administration and defence⁽⁴⁾⁽⁶⁾	<i>SNM</i>	0.9	0.9	1.0	1.3	0.7	0.9	1.5	0.8	-0.2	
M01 Central government and defence ⁽⁷⁾⁽⁸⁾	<i>SNM01</i>	0.9	0.9	0.9	1.2	0.7	0.7	1.2	0.7	0.1	
M02 Local government and civil defence ⁽⁹⁾	<i>SNM02</i>	0.8	1.0	1.3	1.2	0.7	1.1	1.9	1.0	-0.4	
N Education⁽⁴⁾	<i>SNN</i>	0.4	0.6	0.8	0.8	0.4	0.5	1.0	0.6	0.3	
O Health and community services⁽⁴⁾	<i>SNO</i>	0.5	0.4	1.4	0.9	0.6	0.5	1.5	0.5	0.3	
P Cultural and recreational services⁽⁴⁾	<i>SNP</i>	0.6	0.3	1.5	0.8	0.8	0.8	1.1	0.7	0.2	
Q Personal and other services⁽⁴⁾	<i>SNQ</i>	1.0	0.7	0.8	2.8	0.8	2.4	1.5	2.0	0.3	
X01 Agriculture	<i>SNX01</i>	1.0	1.3	2.0	2.4	-0.3	0.4	1.7	0.7	-1.4	
X05 Food, beverage and tobacco	<i>SNX05</i>	0.5	-1.9	1.0	3.3	-1.1	-3.2	2.4	5.9	0.4	
X08 Paper, printing and publishing	<i>SNX08</i>	0.1	0.1	0.3	0.7	0.5	0.0	3.2	2.3	-0.1	
X09 Chemicals, petroleum and plastics	<i>SNX09</i>	1.6	2.6	2.5	0.5	0.8	1.6	1.6	2.5	0.3	
X12 Machinery and metal products	<i>SNX12</i>	1.2	-0.3	1.4	1.1	1.2	0.7	4.2	3.4	0.8	
8 All industries excl admin health education	<i>SN8</i>	0.8	0.3	2.1	3.0	1.3	0.9	2.7	2.1	-0.4	
9 ALL INDUSTRIES	<i>SN9</i>	0.9	0.3	2.0	2.9	1.2	0.9	2.7	2.0	-0.3	

(1) Agriculture input indexes by farm type are based on Farm Expenses Price Index (FEPI) categories, not ANZSIC categories. Output Agriculture indexes by farm type are based on ANZSIC.

(2) Tobacco product manufacturing has been combined with beverage and malt manufacturing for confidentiality reasons.

(3) The water supply industry index is not of sufficient quality and a separate index for it is not published.

(4) The series reference has changed, as at the June 2000 quarter, for consistency with series references for other divisions. The composition of this index is unchanged.

(5) Rail transport has been combined with other transport and storage services for confidentiality reasons.

(6) The official industry group title of government administration, defence, public order and safety services has been abbreviated to public administration and defence in this publication.

(7) The series reference PPIQ.SNM01 was published prior to the June 2000 quarter and differs from this series. The series for government administration, defence, public order and safety service, which includes both central and local government services, is now published with the series reference PPIQ.SNM.

(8) The official sub-industry group title of central government administration, defence, public order and safety services has been abbreviated to central government and defence in this publication.

(9) The official sub-industry group title of local government administration services and civil defence has been abbreviated to local government and civil defence in this publication.

Producers Price Index: December 2006 quarter

Table 5

Producers Price Index
Outputs – selected industries
 Percentage change from same quarter of previous year

Industry group	Series ref: PPIQ	Quarter									
		2004		2005				2006			
		Dec	Mar	Jun	Sep	Dec	Mar	Jun	Sep	Dec	
A	Agriculture, forestry and fishing	<i>SUA</i>	1.2	1.6	0.3	0.3	-1.0	-2.7	0.0	4.2	8.4
A02	Livestock and cropping farming	<i>SUA02</i>	4.4	6.0	3.1	0.2	-3.9	-7.8	-5.9	-1.8	5.2
A03	Dairy cattle farming	<i>SUA03</i>	-0.7	-0.4	-0.4	1.7	0.6	-0.2	0.4	5.0	6.1
A04	Other farming	<i>SUA04</i>	-0.5	2.1	1.3	0.9	-0.5	-3.1	-1.7	3.1	5.9
A06	Forestry and logging	<i>SUA06</i>	-7.5	-3.7	-5.3	-2.0	2.4	1.0	4.6	8.0	12.7
B	Mining	<i>SUB</i>	15.0	14.1	9.9	16.3	18.2	22.4	32.4	27.0	10.8
C	Manufacturing	<i>SUC</i>	3.5	4.3	3.1	3.9	3.1	2.8	5.4	4.7	4.2
C01	Meat and meat product mfg	<i>SUC01</i>	1.7	5.4	-2.0	1.1	-3.0	-4.6	-1.4	1.3	2.6
C02	Dairy product mfg	<i>SUC02</i>	10.8	11.2	9.6	12.5	8.4	10.1	10.7	2.0	-1.1
C03	Other food mfg	<i>SUC03</i>	-0.4	0.4	0.0	0.7	2.4	2.4	4.2	4.6	4.4
C08	Paper and paper product mfg	<i>SUC08</i>	-0.7	-0.2	-4.6	-2.0	0.4	0.1	6.3	8.6	7.2
C09	Printing, publishing and recorded media	<i>SUC09</i>	1.8	2.8	3.8	3.2	3.1	2.1	1.5	1.2	0.0
C10	Petroleum, coal and basic chemical mfg	<i>SUC10</i>	7.1	3.1	7.1	5.9	8.3	3.7	18.4	10.0	0.4
C13	Basic metal mfg	<i>SUC13</i>	6.5	18.3	11.6	11.3	9.2	-2.1	8.3	10.4	14.3
D	Electricity, gas and water⁽¹⁾	<i>SUD</i>	-14.3	-5.3	5.1	18.6	25.8	29.1	22.9	8.6 R	-3.5 R
D01	Electricity generation and supply	<i>SUD01</i>	-17.4	-7.7	4.4	20.5	28.9	33.2	25.3	8.0 R	-6.0 R
E	Construction⁽²⁾	<i>SUE</i>	7.8	6.9	5.9	5.7	5.8	6.2	5.7	6.1	5.9
F	Wholesale trade⁽²⁾	<i>SUF</i>	1.7	2.5	2.7	5.2	4.0	5.5	9.4	6.9	6.5
G	Retail trade⁽²⁾	<i>SUG</i>	1.5	1.4	1.3	2.6	2.2	2.5	3.6	2.8	1.8
H	Accommodation, cafes and restaurants⁽²⁾	<i>SUH</i>	3.6	3.5	3.0	2.7	2.7	2.6	3.1	3.7	3.5
I	Transport and storage	<i>SUI</i>	1.8	2.9	2.5	3.6	3.2	4.0	7.6	7.0	6.8
I01	Road transport	<i>SUI01</i>	2.8	3.7	4.4	4.3	5.0	6.1	7.0	6.8	5.5
I04	Air transport	<i>SUI04</i>	0.4	2.2	2.1	4.3	2.4	2.8	10.8	7.6	7.9
J	Communication services⁽²⁾	<i>SUJ</i>	-0.7	-0.9	-0.4	2.3	2.0	2.9	3.6	2.1	1.1
K	Finance and insurance	<i>SUK</i>	4.1	2.5	1.4	-1.0	-0.8	-1.9	-0.6	-0.6	-2.3
K01	Finance	<i>SUK01</i>	3.9	1.5	0.0	-4.1	-2.6	-4.6	-2.2	-1.9	-5.7
L	Property and business services	<i>SUL</i>	3.3	3.1	3.5	3.4	3.2	3.1	2.7	2.3	2.7
L04	Business services	<i>SUL04</i>	3.4	4.0	4.3	3.8	3.6	2.9	2.4	2.6	2.8
P	Cultural and recreational services	<i>SUP</i>	2.8	2.7	3.4	3.4	3.6	3.1	2.9	3.0	2.7
Q	Personal and other services	<i>SUQ</i>	5.0	3.9	3.1	4.5	4.2	4.5	4.0	3.5	3.3
9	ALL INDUSTRIES	<i>SU9</i>	2.6	3.2	3.0	4.1	3.9	4.0	5.6	4.8 R	4.0 R

(1) The water supply industry index is not of sufficient quality and a separate index for it is not published.

(2) The series reference has changed, as at the June 2000 quarter, for consistency with series references for other divisions. The composition of this index is unchanged.

Symbol

R revised

Producers Price Index: December 2006 quarter

Table 6

Producers Price Index
Inputs – selected industries
Percentage change from same quarter of previous year

Industry group	Series ref: PPIQ	Quarter									
		2004	2005				2006				
		Dec	Mar	Jun	Sep	Dec	Mar	Jun	Sep	Dec	
A Agriculture, forestry and fishing	<i>SNA</i>	3.4	4.5	4.7	6.0	4.9	4.2	4.4	3.0	2.1	
A02 Sheep and beef farming ⁽¹⁾	<i>SNA02</i>	4.6	5.7	5.8	6.9	5.7	4.0	3.9	2.2	0.1	
A03 Dairy cattle farming	<i>SNA03</i>	2.6	3.1	5.2	7.0	6.0	6.3	5.5	3.7	3.1	
A04 Cropping and other farming ⁽¹⁾	<i>SNA04</i>	4.7	7.1	7.2	8.0	4.1	2.1	1.3	0.0	0.8	
A06 Forestry and logging	<i>SNA06</i>	0.5	1.6	1.4	3.2	3.3	2.8	3.8	3.7	4.1	
B Mining	<i>SNB</i>	4.0	5.2	3.8	4.5	5.6	6.2	9.5	9.8	9.1	
C Manufacturing	<i>SNC</i>	3.6	4.1	2.6	2.7	2.3	2.0	3.9	5.9	6.1	
C01 Meat and meat product mfg	<i>SNC01</i>	6.2	9.1	6.2	2.7	-1.7	-6.2	-4.1	0.3	6.3	
C02 Dairy product mfg	<i>SNC02</i>	0.6	0.6	-0.4	1.8	1.7	1.6	1.8	5.1	4.5	
C03 Other food mfg	<i>SNC03</i>	1.3	0.9	2.5	3.4	2.6	3.2	5.9	6.9	6.3	
C08 Paper and paper product mfg	<i>SNC08</i>	4.9	6.5	-0.3	1.4	2.5	1.7	5.6	6.7	5.7	
C09 Printing, publishing and recorded media	<i>SNC09</i>	1.4	0.8	-0.7	0.9	0.6	1.2	3.2	5.5	5.2	
C10 Petroleum, coal and basic chemical mfg	<i>SNC10</i>	4.9	8.2	10.7	8.8	9.8	8.7	6.3	9.5	8.2	
C13 Basic metal mfg	<i>SNC13</i>	16.7	8.8	3.8	-2.1	-0.1	2.6	15.7	15.4	9.6	
D Electricity, gas and water⁽²⁾	<i>SND</i>	-24.0	-12.5	1.7	21.7	34.9	40.5	22.2	-2.8	-20.7	
D01 Electricity generation and supply	<i>SND01</i>	-27.8	-15.7	0.8	24.7	40.1	46.9	23.6	-5.9	-25.0	
E Construction⁽³⁾	<i>SNE</i>	6.5	6.4	6.6	7.2	7.2	8.9	9.5	12.0	11.0	
F Wholesale trade⁽³⁾	<i>SNF</i>	7.7	8.8	10.7	15.3	18.0	17.8	20.9	15.1	12.4	
G Retail trade⁽³⁾	<i>SNG</i>	2.3	2.8	2.5	3.2	3.2	3.3	4.4	4.1	3.1	
H Accommodation, cafes and restaurants⁽³⁾	<i>SNH</i>	2.7	3.0	3.1	2.8	2.6	2.1	3.4	3.3	4.1	
I Transport and storage	<i>SNI</i>	9.4	6.9	8.2	10.0	9.4	14.7	13.9	13.4	7.0	
I01 Road transport	<i>SNI01</i>	6.0	6.9	6.5	10.1	9.4	12.5	14.9	15.0	10.2	
I04 Air transport	<i>SNI04</i>	15.6	8.4	11.4	12.1	11.3	21.1	16.5	16.1	6.5	
J Communication services⁽³⁾	<i>SNJ</i>	2.6	2.4	1.9	3.2	2.6	3.1	4.5	5.3	4.2	
K Finance and insurance	<i>SNK</i>	2.1	2.2	2.3	2.7	2.7	2.9	3.7	3.4	3.2	
K01 Finance	<i>SNK01</i>	1.8	2.2	2.2	2.7	2.9	2.8	3.9	3.4	3.3	
L Property and business services	<i>SNL</i>	3.3	3.1	3.6	3.9	3.9	4.5	4.3	4.4	4.0	
L04 Business services	<i>SNL04</i>	2.3	2.2	2.9	3.2	3.1	3.5	3.3	3.4	2.9	
M Public administration and defence⁽³⁾⁽⁴⁾	<i>SNM</i>	3.9	4.0	3.8	4.1	3.9	3.9	4.4	4.0	3.1	
N Education	<i>SNN</i>	2.0	2.1	2.6	2.7	2.6	2.5	2.8	2.6	2.5	
O Health and community services⁽³⁾	<i>SNO</i>	1.8	1.9	2.9	3.3	3.4	3.4	3.6	3.2	2.9	
P Cultural and recreational services⁽³⁾	<i>SNP</i>	2.6	2.5	3.2	3.2	3.4	3.9	3.5	3.5	2.9	
Q Personal and other services⁽³⁾	<i>SNQ</i>	4.5	3.8	3.4	5.4	5.2	7.0	7.7	7.0	6.4	
8 All industries excl admin health education	<i>SN8</i>	3.4	4.3	4.7	6.2	6.7	7.4	8.1	7.2	5.4	
9 ALL INDUSTRIES	<i>SN9</i>	3.4	4.2	4.7	6.1	6.5	7.2	7.8	6.9	5.3	

(1) Agriculture input indexes by farm type are based on Farm Expenses Price Index (FEPI) categories, not ANZSIC categories. Output agriculture indexes by farm type are based on ANZSIC.

(2) The water supply industry index is not of sufficient quality and a separate index for it is not published.

(3) The series reference has changed, as at the June 2000 quarter, for consistency with series references for other divisions. The composition of this index is unchanged.

(4) The official industry group title of government administration, defence, public order and safety services has been abbreviated to public administration and defence in this publication.

Producers Price Index: December 2006 quarter

Table 7

Producers Price Index
Selected commodities – index numbers and percentage changes
 Base: December 1997 Quarter (=1000)

Selected commodities	Series ref: PPIQ	Quarter								
		2004	2005				2006			
		Dec	Mar	Jun	Sep	Dec	Mar	Jun	Sep	Dec
Livestock: sheep and lamb	SC01	1617	1475	1503	1587	1492	1249	1249	1415	1507
Livestock: cattle	SC02	1499	1441	1469	1622	1518	1397	1489	1691	1641
Livestock: deer	SC03	766	729	729	799	731	688	699	788	806
Wool	SC04	951	900	896	883	834	851	923	925	895
Logs for domestic market	SC05	918	929	921	910	907	901	918	934	948
Logs for export market	SC06	782	825	858	846	838	887	971	1022	1149
Processed meat: beef	SC07	1470	1482	1528	1605	1443	1487	1500	1536	1446
Processed meat: sheep and lamb	SC08	1402	1514	1447	1412	1338	1340	1406	1524	1357
Dairy products (excl milk and ice cream)	SC09	1205	1228	1287	1340	1313	1369	1440	1372	1301
Carpet and textile floor coverings	SC10	1316	1278	1281	1273	1280	1289	1302	1304	1306
Pulp	SC11	1001	1015	1017	983	1025	1045	1167	1242	1236
Paper	SC12	1016	1007	999	1004	993	999	1056	1079	1081
Fertiliser	SC13	1039	1136	1157	1182	1184	1216	1217	1236	1242
Ready-mixed concrete	SC14	1136	1203	1212	1224	1224	1256	1260	1265	1274
Framing timber	SC15	1071	1071	1078	1077	1076	1053	1061	1069	1059
Electricity: commercial consumers	SC16	1194	1202	1246	1264	1311	1301	1448	1350	1263
Gas: commercial consumers	SC17	1519	1584	1592	1593	1591	1631	1659	1672	1797
Road freight	SC18	1187	1201	1215	1237	1255	1285	1317	1335	1337
International sea freight	SC19	862	871	919	936	957	950	991	951	902
Finance service charge	SC20	1150	1129	1088	1078	1080	1016	1024	1023	965
Bank charges	SC21	1325	1328	1327	1331	1363	1376	1370	1368	1367
Commercial rent (excl agricultural land)	SC22	1062	1068	1071	1084	1090	1094	1107	1112	1131
Legal services: personal and corporate	SC23	1281	1348	1358	1357	1361	1373	1375	1378	1394
Accounting services	SC24	1497	1500	1534	1558	1561	1562	1597	1616	1624

Percentage change from previous quarter

Livestock: sheep and lamb	1.1	-8.8	1.9	5.6	-6.0	-16.3	0.0	13.3	6.5
Livestock: cattle	-1.3	-3.9	1.9	10.4	-6.4	-8.0	6.6	13.6	-3.0
Livestock: deer	-3.0	-4.8	0.0	9.6	-8.5	-5.9	1.6	12.7	2.3
Wool	-10.5	-5.4	-0.4	-1.5	-5.5	2.0	8.5	0.2	-3.2
Logs for domestic market	-5.5	1.2	-0.9	-1.2	-0.3	-0.7	1.9	1.7	1.5
Logs for export market	-3.0	5.5	4.0	-1.4	-0.9	5.8	9.5	5.3	12.4
Processed meat: beef	-5.5	0.8	3.1	5.0	-10.1	3.0	0.9	2.4	-5.9
Processed meat: sheep and lamb	0.5	8.0	-4.4	-2.4	-5.2	0.1	4.9	8.4	-11.0
Dairy products (excl milk and ice cream)	2.7	1.9	4.8	4.1	-2.0	4.3	5.2	-4.7	-5.2
Carpet and textile floor coverings	1.3	-2.9	0.2	-0.6	0.5	0.7	1.0	0.2	0.2
Pulp	-8.6	1.4	0.2	-3.3	4.3	2.0	11.7	6.4	-0.5
Paper	0.0	-0.9	-0.8	0.5	-1.1	0.6	5.7	2.2	0.2
Fertiliser	0.2	9.3	1.8	2.2	0.2	2.7	0.1	1.6	0.5
Ready-mixed concrete	1.2	5.9	0.7	1.0	0.0	2.6	0.3	0.4	0.7
Framing timber	2.5	0.0	0.7	-0.1	-0.1	-2.1	0.8	0.8	-0.9
Electricity: commercial consumers	4.6	0.7	3.7	1.4	3.7	-0.8	11.3	-6.8	-6.4
Gas: commercial consumers	4.6	4.3	0.5	0.1	-0.1	2.5	1.7	0.8	7.5
Road freight	1.0	1.2	1.2	1.8	1.5	2.4	2.5	1.4	0.1
International sea freight	-0.5	1.0	5.5	1.8	2.2	-0.7	4.3	-4.0	-5.2
Finance service charge	-2.0	-1.8	-3.6	-0.9	0.2	-5.9	0.8	-0.1	-5.7
Bank charges	1.7	0.2	-0.1	0.3	2.4	1.0	-0.4	-0.1	-0.1
Commercial rent (excl agricultural land)	0.5	0.6	0.3	1.2	0.6	0.4	1.2	0.5	1.7
Legal services: personal and corporate	2.1	5.2	0.7	-0.1	0.3	0.9	0.1	0.2	1.2
Accounting services	0.5	0.2	2.3	1.6	0.2	0.1	2.2	1.2	0.5

Farm Expenses Price Index: December 2006 quarter

Table 1.01

Farm Expenses Price Index
All farms – index numbers
 Base: December 1992 quarter (=1000)

Input type	Series ref: FPIQ	Quarter											
		2004				2005				2006			
		Dec	Mar	Jun	Sep	Dec	Mar	Jun	Sep	Dec			
Administration	SI9A	1396	1401	1412	1427	1431	1437	1454	1466	1465			
Animal health and breeding	SI9B	1275	1280	1291	1302	1314	1328	1328	1335	1278			
Dairy shed expenses	SI9C	1298	1323	1345	1330	1352	1371	1375	1384	1414			
Electricity	SI9F	1526	1526	1572	1680	1746	1746	1819	1822	1819			
Feed, grazing, cultivation and harvesting	SI9G	1314	1311	1330	1338	1340	1347	1365	1375	1376			
Fertiliser, lime and seeds	SI9H	1035	1051	1072	1092	1089	1109	1114	1123	1129			
Freight	SI9I	993	1008	1013	1040	1068	1084	1105	1145	1144			
Fuel	SI9J	1413	1419	1541	1793	1698	1765	2112	2092	1809			
Insurance premiums	SI9K	1359	1368	1369	1369	1368	1369	1332	1337	1337			
Rent and hire	SI9L	1570	1573	1575	1588	1591	1598	1598	1598	1594			
Repairs, maintenance and motor vehicle repairs	SI9M	1291	1305	1332	1341	1350	1365	1366	1390	1379			
Packaging costs	SI9N	1004	998	1002	1002	1001	1000	1003	1003	1004			
Shearing	SI9O	1473	1483	1506	1554	1617	1635	1635	1662	1684			
Weed and pest control	SI9Q	1198	1197	1207	1218	1219	1239	1245	1259	1261			
Subtotal excluding livestock	SI9Y	1268	1275	1300	1332	1335	1351	1381	1392	1370			
Livestock purchases	SI9R	1560	1628	1663	1687	1648	1591	1577	1575	1566			
Subtotal including livestock	SI9Z	1314	1330	1356	1387	1384	1388	1411	1420	1400			
Local and central government rates and fees	SI9U	1381	1364	1364	1364	1442	1442	1442	1438	1516			
Interest rates	SI9V	824	835	854	852	866	877	880	884	888			
Wages and salaries	SI9W	1234	1238	1248	1255	1266	1271	1276	1285	1291			
All inputs excluding livestock	SI98	1183	1189	1210	1231	1241	1254	1274	1283	1273			
ALL INPUTS INCLUDING LIVESTOCK	SI99	1223	1236	1258	1280	1284	1290	1306	1314	1304			

Table 1.02

Farm Expenses Price Index
All farms
 Percentage change from previous quarter

Input type	Series ref: FPIQ	Quarter											
		2004				2005				2006			
		Dec	Mar	Jun	Sep	Dec	Mar	Jun	Sep	Dec			
Administration	SI9A	0.8	0.4	0.8	1.1	0.3	0.4	1.2	0.8	-0.1			
Animal health and breeding	SI9B	0.4	0.4	0.9	0.9	0.9	1.1	0.0	0.5	-4.3			
Dairy shed expenses	SI9C	-0.9	1.9	1.7	-1.1	1.7	1.4	0.3	0.7	2.2			
Electricity	SI9F	0.3	0.0	3.0	6.9	3.9	0.0	4.2	0.2	-0.2			
Feed, grazing, cultivation and harvesting	SI9G	-0.8	-0.2	1.4	0.6	0.1	0.5	1.3	0.7	0.1			
Fertiliser, lime and seeds	SI9H	0.1	1.5	2.0	1.9	-0.3	1.8	0.5	0.8	0.5			
Freight	SI9I	1.7	1.5	0.5	2.7	2.7	1.5	1.9	3.6	-0.1			
Fuel	SI9J	2.2	0.4	8.6	16.4	-5.3	3.9	19.7	-0.9	-13.5			
Insurance premiums	SI9K	0.4	0.7	0.1	0.0	-0.1	0.1	-2.7	0.4	0.0			
Rent and hire	SI9L	-0.1	0.2	0.1	0.8	0.2	0.4	0.0	0.0	-0.3			
Repairs, maintenance and motor vehicle repairs	SI9M	1.6	1.1	2.1	0.7	0.7	1.1	0.1	1.8	-0.8			
Packaging costs	SI9N	0.3	-0.6	0.4	0.0	-0.1	-0.1	0.3	0.0	0.1			
Shearing	SI9O	0.6	0.7	1.6	3.2	4.1	1.1	0.0	1.7	1.3			
Weed and pest control	SI9Q	-0.3	-0.1	0.8	0.9	0.1	1.6	0.5	1.1	0.2			
Subtotal excluding livestock	SI9Y	0.6	0.6	2.0	2.5	0.2	1.2	2.2	0.8	-1.6			
Livestock purchases	SI9R	3.4	4.4	2.1	1.4	-2.3	-3.5	-0.9	-0.1	-0.6			
Subtotal including livestock	SI9Z	1.1	1.2	2.0	2.3	-0.2	0.3	1.7	0.6	-1.4			
Local and central government rates and fees	SI9U	5.2	-1.2	0.0	0.0	5.7	0.0	0.0	-0.3	5.4			
Interest rates	SI9V	2.6	1.3	2.3	-0.2	1.6	1.3	0.3	0.5	0.5			
Wages and salaries	SI9W	0.7	0.3	0.8	0.6	0.9	0.4	0.4	0.7	0.5			
All inputs excluding livestock	SI98	1.1	0.5	1.8	1.7	0.8	1.0	1.6	0.7	-0.8			
ALL INPUTS INCLUDING LIVESTOCK	SI99	1.3	1.1	1.8	1.7	0.3	0.5	1.2	0.6	-0.8			

Farm Expenses Price Index: December 2006

Table 1.03

Farm Expenses Price Index
All farms

Percentage change from same quarter of the previous year

Input type	Series ref: FPIQ	Quarter								
		2004	2005				2006			
		Dec	Mar	Jun	Sep	Dec	Mar	Jun	Sep	Dec
Administration	SI9A	5.1	4.8	2.4	3.0	2.5	2.6	3.0	2.7	2.4
Animal health and breeding	SI9B	1.5	2.1	1.6	2.5	3.1	3.8	2.9	2.5	-2.7
Dairy shed expenses	SI9C	0.2	1.7	2.2	1.5	4.2	3.6	2.2	4.1	4.6
Electricity	SI9F	5.2	5.4	6.6	10.4	14.4	14.4	15.7	8.5	4.2
Feed, grazing, cultivation and harvesting	SI9G	0.8	0.5	1.2	1.0	2.0	2.7	2.6	2.8	2.7
Fertiliser, lime and seeds	SI9H	-0.6	2.0	3.2	5.6	5.2	5.5	3.9	2.8	3.7
Freight	SI9I	4.6	6.1	5.3	6.6	7.6	7.5	9.1	10.1	7.1
Fuel	SI9J	20.9	20.8	19.1	29.7	20.2	24.4	37.1	16.7	6.5
Insurance premiums	SI9K	1.3	1.6	1.3	1.2	0.7	0.1	-2.7	-2.3	-2.3
Rent and hire	SI9L	0.7	0.8	1.0	1.1	1.3	1.6	1.5	0.6	0.2
Repairs, maintenance and motor vehicle repairs	SI9M	5.6	5.5	6.8	5.5	4.6	4.6	2.6	3.7	2.1
Packaging costs	SI9N	3.9	3.4	2.5	0.1	-0.3	0.2	0.1	0.1	0.3
Shearing	SI9O	2.5	2.7	3.8	6.1	9.8	10.2	8.6	6.9	4.1
Weed and pest control	SI9Q	1.1	1.1	1.9	1.3	1.8	3.5	3.1	3.4	3.4
Subtotal excluding livestock	SI9R	5.6	9.6	11.2	11.9	5.6	-2.3	-5.2	-6.6	-5.0
Livestock purchases	SI9Y	3.7	4.0	4.4	5.6	5.3	6.0	6.2	4.5	2.6
Subtotal including livestock	SI9Z	4.1	5.1	5.6	6.7	5.3	4.4	4.1	2.4	1.2
Local and central government rates and fees	SI9U	4.8	3.5	3.5	3.9	4.4	5.7	5.7	5.4	5.1
Interest rates	SI9V	9.6	9.9	9.9	6.1	5.1	5.0	3.0	3.8	2.5
Wages and salaries	SI9W	3.4	3.3	3.1	2.4	2.6	2.7	2.2	2.4	2.0
All inputs excluding livestock	SI98	4.5	4.7	4.9	5.2	4.9	5.5	5.3	4.2	2.6
ALL INPUTS INCLUDING LIVESTOCK	SI99	4.6	5.4	5.7	6.0	5.0	4.4	3.8	2.7	1.6

Farm Expenses Price Index: December 2006 quarter

Table 2

Farm Expenses Price Index
Sheep and beef farms – index numbers
 Base: December 1992 quarter (=1000)

Input type	Series ref: FPIQ	Quarter									
		2004	2005				2006				
		Dec	Mar	Jun	Sep	Dec	Mar	Jun	Sep	Dec	
Administration	SI3A	1429	1434	1442	1465	1469	1474	1499	1512	1511	
Animal health and breeding	SI3B	1230	1232	1246	1248	1266	1290	1292	1287	1145	
Electricity	SI3F	1465	1465	1509	1612	1676	1676	1746	1749	1746	
Feed, grazing, cultivation and harvesting	SI3G	1397	1391	1419	1412	1414	1430	1453	1454	1440	
Fertiliser, lime and seeds	SI3H	1024	1042	1064	1086	1082	1104	1107	1116	1122	
Freight	SI3I	993	1008	1013	1040	1068	1084	1105	1145	1144	
Fuel	SI3J	1413	1419	1541	1793	1698	1765	2112	2092	1809	
Insurance premiums	SI3K	1336	1362	1361	1362	1361	1362	1314	1317	1317	
Rent and hire	SI3L	1599	1600	1602	1613	1615	1620	1621	1621	1614	
Repairs, maintenance and motor vehicle repairs	SI3M	1291	1305	1332	1341	1350	1365	1366	1390	1379	
Shearing	SI3O	1473	1483	1506	1554	1617	1635	1635	1662	1684	
Weed and pest control	SI3Q	1268	1266	1271	1285	1290	1314	1320	1337	1341	
Subtotal excluding livestock	SI3Y	1294	1303	1331	1369	1376	1396	1429	1441	1408	
Livestock purchases	SI3R	1762	1830	1841	1855	1827	1725	1707	1704	1689	
Subtotal including livestock	SI3Z	1379	1399	1424	1458	1458	1456	1480	1489	1459	
Local and central government rates and fees	SI3U	1400	1383	1383	1383	1469	1469	1469	1465	1573	
Interest rates	SI3V	825	836	853	850	865	876	879	883	887	
Wages and salaries	SI3W	1234	1238	1248	1255	1266	1271	1276	1285	1291	
All inputs excluding livestock	SI38	1198	1206	1229	1254	1266	1282	1305	1314	1299	
ALL INPUTS INCLUDING LIVESTOCK	SI39	1270	1286	1307	1331	1338	1339	1357	1364	1349	

Table 3

Farm Expenses Price Index
Dairy farms – index numbers
 Base: December 1992 quarter (=1000)

Input type	Series ref: FPIQ	Quarter									
		2004	2005				2006				
		Dec	Mar	Jun	Sep	Dec	Mar	Jun	Sep	Dec	
Administration	SI4A	1376	1383	1389	1392	1394	1400	1413	1423	1421	
Animal health and breeding	SI4B	1348	1356	1365	1386	1391	1391	1390	1411	1447	
Dairy shed expenses	SI4C	1298	1323	1345	1330	1352	1371	1375	1384	1414	
Miscellaneous expenses	SI4D	1187	1192	1203	1224	1242	1250	1265	1280	1288	
Electricity	SI4F	1653	1653	1703	1820	1892	1892	1971	1974	1970	
Feed, grazing, cultivation and harvesting	SI4G	1342	1335	1355	1367	1359	1359	1381	1399	1395	
Fertiliser, lime and seeds	SI4H	1024	1042	1064	1086	1082	1104	1107	1116	1122	
Freight	SI4I	993	1008	1013	1040	1068	1084	1105	1145	1144	
Fuel	SI4J	1413	1419	1541	1793	1698	1765	2112	2092	1809	
Insurance premiums	SI4K	1425	1420	1426	1427	1426	1427	1393	1396	1396	
Rent and hire	SI4L	1602	1603	1605	1613	1616	1620	1621	1621	1614	
Repairs, maintenance and motor vehicle repairs	SI4M	1291	1305	1332	1341	1350	1365	1366	1390	1379	
Weed and pest control	SI4Q	1250	1248	1251	1265	1271	1293	1297	1314	1318	
Subtotal excluding livestock	SI4Y	1296	1303	1327	1356	1357	1369	1395	1408	1398	
Livestock purchases	SI4R	1012	1018	1127	1185	1178	1180	1214	1216	1216	
Subtotal including livestock	SI4Z	1254	1261	1297	1331	1330	1341	1368	1380	1371	
Local and central government rates and fees	SI4U	1344	1328	1328	1328	1378	1378	1378	1374	1423	
Interest rates	SI4V	802	813	832	832	843	854	857	862	866	
Wages and salaries	SI4W	1234	1238	1248	1255	1266	1271	1276	1285	1291	
All inputs excluding livestock	SI48	1161	1168	1189	1207	1213	1224	1241	1252	1249	
ALL INPUTS INCLUDING LIVESTOCK	SI49	1147	1154	1183	1205	1210	1220	1239	1248	1245	

Farm Expenses Price Index: December 2006 quarter

Table 4

Farm Expenses Price Index
Horticultural farms – index numbers
Base: December 1992 quarter (=1000)

Input type	Series ref: FPIQ	Quarter									
		2004			2005			2006			
		Dec	Mar	Jun	Sep	Dec	Mar	Jun	Sep	Dec	
Administration	SI6A	1328	1332	1355	1364	1369	1377	1382	1393	1393	
Animal health and breeding	SI6B	1230	1232	1246	1248	1266	1290	1292	1287	1145	
Electricity	SI6F	1440	1440	1484	1585	1648	1648	1717	1719	1716	
Feed, grazing, cultivation and harvesting	SI6G	1243	1250	1272	1299	1312	1326	1349	1354	1370	
Fertiliser, lime and seeds	SI6H	1099	1107	1122	1130	1128	1142	1154	1168	1172	
Freight	SI6I	993	1008	1013	1040	1068	1084	1105	1145	1144	
Fuel	SI6J	1413	1419	1541	1793	1698	1765	2112	2092	1809	
Insurance premiums	SI6K	1245	1230	1240	1232	1230	1232	1210	1226	1228	
Rent and hire	SI6L	1497	1503	1506	1525	1532	1541	1542	1543	1542	
Repairs, maintenance and motor vehicle repairs	SI6M	1291	1305	1332	1341	1350	1365	1366	1390	1379	
Packaging costs	SI6N	1005	999	1003	1002	1002	1001	1003	1004	1004	
Weed and pest control	SI6Q	1103	1105	1121	1128	1124	1139	1144	1155	1155	
Subtotal excluding livestock	SI6Y	1167	1169	1189	1212	1212	1223	1249	1257	1243	
Livestock purchases	SI6R	1568	1653	1686	1707	1650	1621	1599	1596	1589	
Subtotal including livestock	SI6Z	1177	1182	1202	1225	1223	1233	1258	1266	1252	
Local and central government rates and fees	SI6U	1595	1579	1579	1579	1696	1696	1696	1692	1729	
Interest rates	SI6V	841	852	883	882	896	908	910	913	918	
Wages and salaries	SI6W	1234	1238	1248	1255	1266	1271	1276	1285	1291	
All inputs excluding livestock	SI68	1150	1154	1172	1189	1195	1205	1222	1230	1223	
ALL INPUTS INCLUDING LIVESTOCK	SI69	1157	1162	1181	1198	1202	1212	1229	1236	1230	

Table 5

Farm Expenses Price Index
Cropping and other farms – index numbers
Base: December 1992 quarter (=1000)

Input type	Series ref: FPIQ	Quarter									
		2004			2005			2006			
		Dec	Mar	Jun	Sep	Dec	Mar	Jun	Sep	Dec	
Administration	SI8A	1394	1405	1413	1429	1433	1440	1451	1461	1461	
Animal health and breeding	SI8B	1143	1145	1153	1161	1170	1196	1195	1191	1189	
Electricity	SI8F	1425	1425	1469	1569	1631	1631	1700	1702	1699	
Feed, grazing, cultivation and harvesting	SI8G	1256	1255	1263	1270	1276	1280	1286	1298	1306	
Fertiliser, lime and seeds	SI8H	1024	1042	1064	1086	1082	1104	1107	1116	1122	
Freight	SI8I	993	1008	1013	1040	1068	1084	1105	1145	1144	
Fuel	SI8J	1413	1419	1541	1793	1698	1765	2112	2092	1809	
Insurance premiums	SI8K	1457	1451	1441	1442	1445	1446	1431	1434	1432	
Rent and hire	SI8L	1567	1570	1572	1585	1589	1596	1596	1597	1592	
Repairs, maintenance, motor vehicle repairs	SI8M	1291	1305	1332	1341	1350	1365	1366	1390	1379	
Packaging costs	SI8N	995	989	993	991	991	990	993	995	995	
Shearing	SI8O	1473	1483	1506	1554	1617	1635	1635	1662	1684	
Weed and pest control	SI8Q	1268	1266	1271	1285	1290	1314	1320	1337	1341	
Subtotal excluding livestock	SI8Y	1276	1281	1299	1329	1330	1344	1372	1382	1366	
Livestock purchases	SI8R	1618	1754	1775	1789	1682	1680	1621	1621	1617	
Subtotal including livestock	SI8Z	1360	1396	1415	1441	1416	1425	1433	1440	1427	
Local and central government rates and fees	SI8U	1260	1244	1244	1244	1313	1313	1313	1309	1353	
Interest rates	SI8V	868	879	898	894	911	921	924	927	934	
Wages and salaries	SI8W	1234	1238	1248	1255	1266	1271	1276	1285	1291	
All inputs excluding livestock	SI88	1227	1231	1247	1268	1277	1288	1309	1318	1311	
ALL INPUTS INCLUDING LIVESTOCK	SI89	1300	1329	1346	1366	1353	1362	1368	1374	1368	