



Hot Off The Press

LATEST STATISTICS FROM STATISTICS NEW ZEALAND

Embargoed until 10:45am – 17 May 2006

Producers Price Index March 2006 quarter

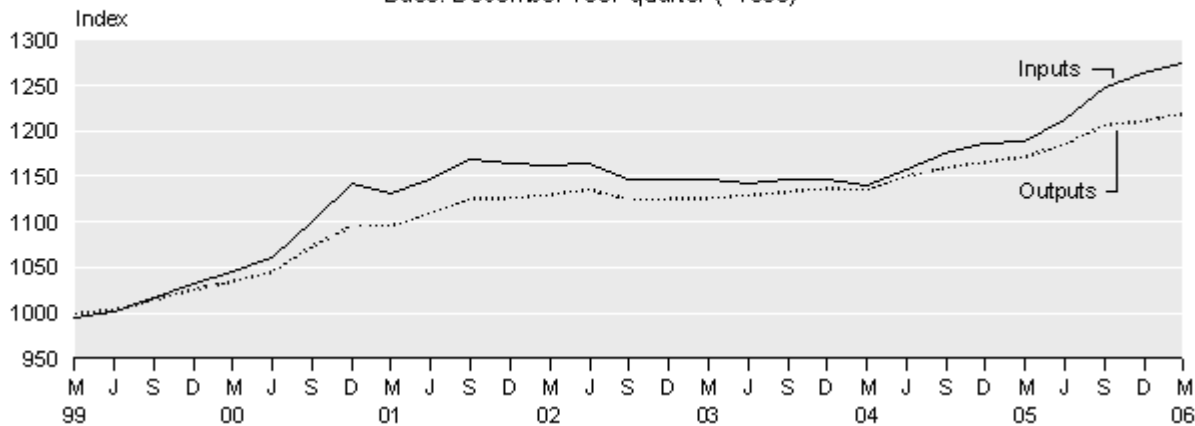
Highlights

- The PPI outputs index rose 0.7 percent in the March 2006 quarter.
- Output prices rose 4.0 percent between the March 2005 and March 2006 quarters.
- Output prices for electricity generation and supply rose 6.1 percent in the March 2006 quarter.
- The PPI inputs index rose 0.9 percent in the March 2006 quarter.
- Input prices rose 7.2 percent between the March 2005 and March 2006 quarters.
- Input prices for electricity generation and supply rose 8.8 percent in the March 2006 quarter.

Producers Price Index

All industries – inputs and outputs

Base: December 1997 quarter (=1000)



Brian Pink
Government Statistician

17 May 2006
Cat 70.906 Set 05/06 – 188

There is a companion Media Release published – [Producers Price Index: March 2006 quarter](#).

Commentary

Outputs

Output prices for all industries in the Producers Price Index (PPI) rose 0.7 percent in the March 2006 quarter, following increases of 0.3 percent and 1.8 percent in the December 2005 and September 2005 quarters, respectively. This is the eighth consecutive quarterly increase in the PPI outputs index, which is now 7.3 percent higher than in the March 2004 quarter.

The most significant contributors to the PPI output index in the March 2006 quarter came from the electricity generation and supply index (up 6.1 percent, driven by higher wholesale prices for electricity), the wholesale trade index, and the dairy product manufacturing index. This is the fifth consecutive quarter where the electricity generation and supply index has been one of the top three positive contributors to the PPI outputs index, and the sixth consecutive quarterly increase in the index since the December 2004 quarter. The current index value for outputs of electricity generation and supply is the highest ever recorded since the series began in the June 1994 quarter. In the year to the March 2006 quarter, the electricity generation and supply index rose 33.2 percent.

The wholesale trade index rose 1.6 percent in the March 2006 quarter following a 0.9 percent fall in the December 2005 quarter. The current quarter's increase was mainly driven by higher prices in the mineral, metal and chemical wholesaling sector, largely due to higher bulk diesel prices.

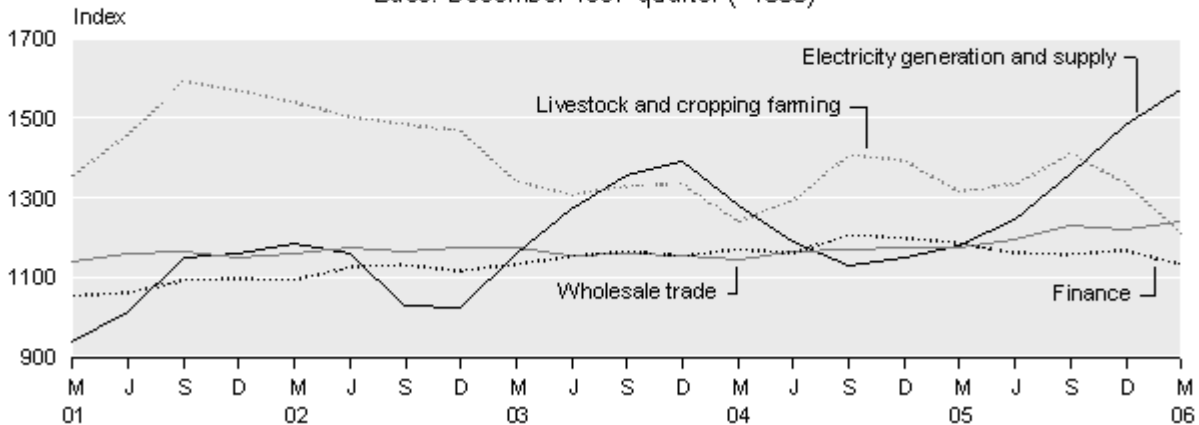
The dairy product manufacturing index rose 3.7 percent in the March 2006 quarter, mainly driven by an increase in the price of whole milk powder. The dairy product manufacturing index is now 24.6 percent higher than in the December 2003 quarter, the result of eight rises in the index over the last nine quarters.

The major downward contribution to the PPI outputs index in the March 2006 quarter came from the livestock and cropping farming index, which recorded a decline of 9.3 percent mainly due to lower farm gate prices for sheep and lambs. The fall this quarter follows a 5.2 percent fall in the December 2005 quarter, and is the largest quarterly fall recorded in the index since the series began in the September 1994 quarter. The current quarter's index number is now 21.2 percent lower than in the March 2002 quarter, due in part to a seasonal effect, illustrated by falls of 5.6 percent, 7.0 percent and 8.6 percent in the March 2005, March 2004 and March 2003 quarters, respectively.

Other significant downward contributions to the PPI outputs index in the March 2006 quarter came from the finance index (down 3.1 percent), and the petroleum, coal and basic chemical manufacturing index (down 5.6 percent). The lower prices for financial intermediation services led to the decline in the finance index. The decrease in the margin for petroleum refining was the main driver for the decline in the petroleum, coal and basic chemical manufacturing index.

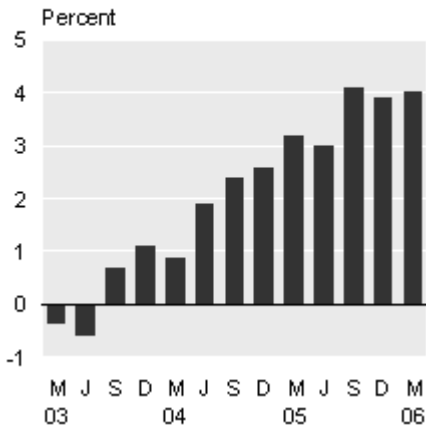
In the year to the March 2006 quarter, the PPI outputs index rose 4.0 percent, compared with rises of 3.2 percent in the year to the March 2005 quarter, and 0.9 percent in the year to the March 2004 quarter.

Producers Price Index
Outputs index – selected industries
 Base: December 1997 quarter (=1000)



PPI Outputs

Annual percentage change



Producers Price Index

Outputs – all industries

Quarter	Percentage change from previous quarter	Percentage change from same quarter, previous year
Mar 2004	-0.1	0.9
Jun 2004	1.3	1.9
Sep 2004	0.8	2.4
Dec 2004	0.5	2.6
Mar 2005	0.5	3.2
Jun 2005	1.2	3.0
Sep 2005	1.8	4.1
Dec 2005	0.3	3.9
Mar 2006	0.7	4.0

Inputs

In the March 2006 quarter, input prices for all industries in the PPI increased 0.9 percent. This is a continuation of the trend for increasing input prices that began in the June 2004 quarter. However, the rise in the March 2006 quarter is less than the rises of 1.2 percent in the December 2005 quarter, and 2.9 percent in the September 2005 quarter.

For the second consecutive quarter, the most significant upward contributor to the PPI inputs index was the electricity generation and supply index (up 8.8 percent). This follows rises of 11.2 percent and 14.0 percent in the December 2005 and September 2005 quarters, respectively. The main driver of the increase in electricity generation and supply prices in the March 2006 quarter was the rising price of bulk electricity. In the year to the March 2006 quarter, the electricity generation and supply index rose 46.9 percent, the largest annual rise since the series began in the June 1994 quarter.

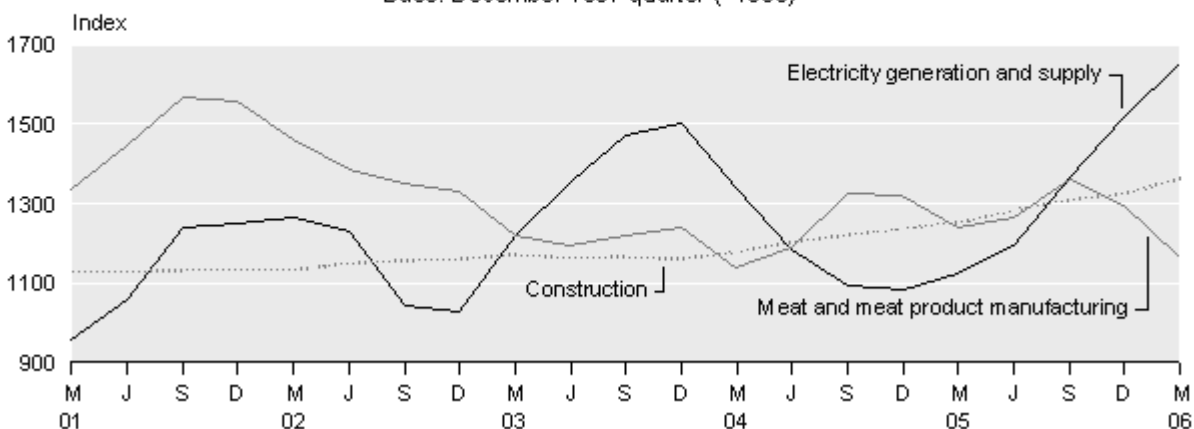
The second-largest contributor to the rise in PPI inputs was the construction index, up 2.8 percent in the March 2006 quarter. The main driver of the rise was a 3.9 percent increase in the construction trade services index. This is the ninth consecutive increase in the construction index since a 0.3 percent fall in the December 2003 quarter, and the largest quarterly rise since a 4.3 percent rise in the December 2000 quarter.

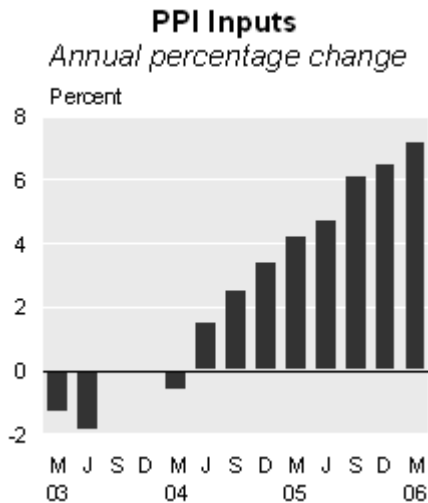
The wholesale trade index was the third-largest contributor to the PPI inputs index, increasing 0.7 percent during the March 2006 quarter. Higher prices in the mineral, metal and chemical wholesaling sector, attributable to the rise of crude oil prices on the world market and higher domestic natural gas prices, was the main driver for the increase this quarter.

The overall increase in input prices was partly offset by a 10.2 percent fall in the meat and meat product manufacturing index, the only significant downward contributor in the March 2006 quarter. This follows a 4.7 percent fall in the December 2005 quarter and a rise of 7.6 percent in the September 2005 quarter. The fall in the current quarter is the largest since the series began in the June 1994 quarter. Lower wholesale prices for cattle (especially bulls and steers) and prime lambs were the key factors contributing to the negative movement of the index this quarter.

The trend in increasing annual movements in the overall PPI inputs index has continued this quarter. Input prices increased 7.2 percent in the year to the March 2006 quarter, surpassing the 4.2 percent increase during the year to the March 2005 quarter. The increase in the year to the March 2006 quarter is the largest annual increase in the index since a rise of 8.1 percent in the year to the June 2001 quarter.

Producers Price Index
Inputs index – selected industries
 Base: December 1997 quarter (=1000)





Producers Price index
Inputs – all industries

Quarter	Percentage change from previous quarter	Percentage change from same quarter, previous year
Mar 2004	-0.5	-0.6
Jun 2004	1.6	1.5
Sep 2004	1.5	2.5
Dec 2004	0.9	3.4
Mar 2005	0.3	4.2
Jun 2005	2.0	4.7
Sep 2005	2.9	6.1
Dec 2005	1.2	6.5
Mar 2006	0.9	7.2

Commodities

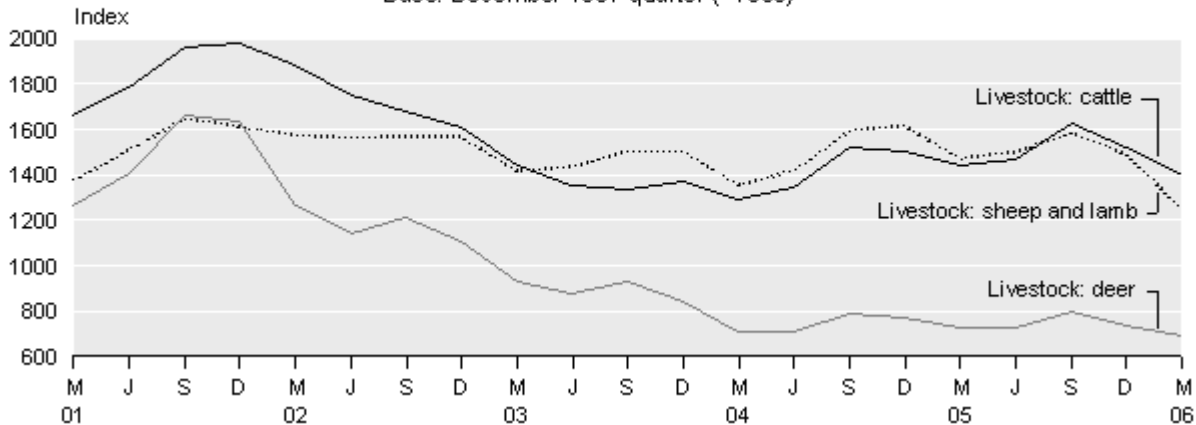
The three main livestock commodity indexes recorded decreases in the March 2006 quarter, following decreases for each index in the December 2005 quarter. The livestock: sheep and lamb index fell 16.3 percent in the March 2006 quarter, following a 6.0 percent fall in the December 2005 quarter. The fall in the current quarter is the largest since the series began in the September 1994 quarter, and was mainly caused by falling farm gate prices for prime lambs.

Lower wholesale prices for bulls and steers were the main driver for the 8.0 percent fall in the livestock: cattle index in the March 2006 quarter. This is the second consecutive quarterly fall, following a 6.4 percent fall in the December 2005 quarter. It is also the largest fall since a 10.4 percent fall in the March 2003 quarter.

The livestock: deer index fell 5.9 percent in the March 2006 quarter following an 8.5 percent fall in the December 2005 quarter. The latest fall was mainly due to lower farm gate price for stags and hinds.

Selected Commodity Indexes

Livestock: sheep and lamb; livestock: cattle; livestock: deer
Base: December 1997 quarter (=1000)



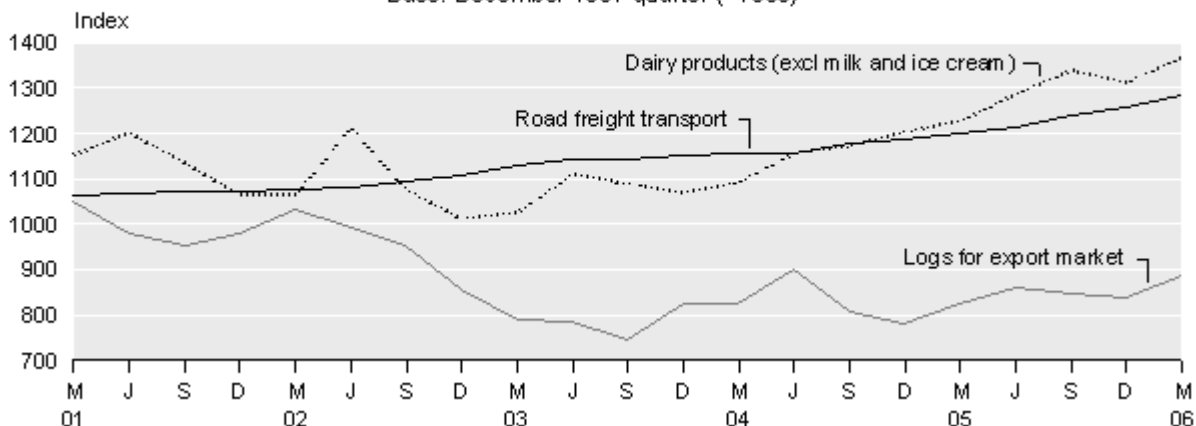
The logs for export market index rose 5.8 percent in the March 2006 quarter, following falls of 0.9 percent and 1.4 percent in the December and September 2005 quarters, respectively. The main driver for the increase in the March 2006 quarter was higher export prices for treated logs. From the March 2005 quarter to the March 2006 quarter, the logs for export market index rose 7.5 percent, compared with rises of 0.1 percent and 4.4 percent in the years to the March 2005 and March 2004 quarters, respectively.

The index for dairy products (excluding milk and ice cream) rose 4.3 percent in the March 2006 quarter, following a 2.0 percent fall in the December 2005 quarter. The rise this quarter is mainly due to increased export prices for whole milk powder. The dairy products (excluding milk and ice cream) index has risen in eight of the last nine quarters, and is now 25.3 percent higher than in the March 2004 quarter.

The road freight transport index increased 2.4 percent in the March 2006 quarter, its ninth consecutive increase. The index is now 28.4 percent higher than in the March 2000 quarter. Respondents cited increasing fuel costs as the driver behind the rise this quarter. In the year to the March 2006 quarter, the index for road freight transport rose 7.0 percent, compared with rises of 4.2 percent and 2.1 percent in the years to the March 2005 and March 2004 quarters, respectively.

Selected Commodity Indexes

Logs for export market; dairy products (excl milk and ice cream); road freight transport
Base: December 1997 quarter (=1000)



Impact of exchange rates

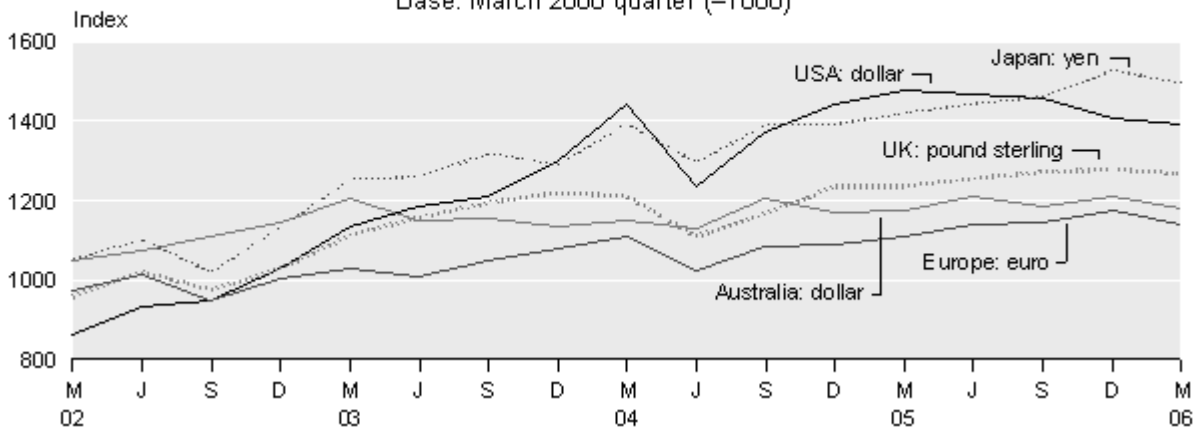
When calculating the PPI, prices collected on the fifteenth day of the middle month in the quarter are generally used to represent the entire quarter. Prices collected for imported goods are often denominated in foreign currencies. These are converted to New Zealand dollars using the exchange rate at the time of pricing.

The New Zealand dollar depreciated against the currencies of all the country's five major trading partners in the March 2006 quarter. The table below shows changes in the value of the New Zealand dollar in foreign currency denominations from the December 2005 quarter to the March 2006 quarter.

Exchange Rates
(Published by Westpac Bank)
Bank selling rates for NZ\$1.00

	USA (NZ\$:US\$)	UK (NZ\$:Pound)	Australia (NZ\$:AUS\$)	Japan (NZ\$:Yen)	Europe (NZ\$:Euro)
15 November 2005	0.6766	0.3893	0.9307	79.9384	0.5765
15 February 2006	0.6695	0.3863	0.9069	78.2978	0.5610
Percentage change	-1.0	-0.8	-2.6	-2.1	-2.7

Producers Price Index
Index of exchange rates
Base: March 2000 quarter (=1000)



Price index developments

Statistics New Zealand is working on a progressive redevelopment of the Producers Price Index. This involves re-evaluation of the items that are priced within the indexes, and also the relative weights that are applied to them. This work began in 2004, and the first of the redeveloped published series will take effect from the next PPI publication (the June 2006 quarter). Series references and previous quarters' index numbers will remain unchanged, but the movements recorded from the June 2006 quarter onwards will include this new data. At this stage the redevelopment applies only to output indexes, with new input indexes to be finalised once all of the output indexes has been redeveloped.

Additional information about the redeveloped published indexes will be included in the Technical Notes section of the relevant quarter's Hot Off The Press, and a notice will be placed in the Commentary relating to planned implementation for the next quarter's release.

For further information, please contact Patricia Jennings on 04 931 4600 or info@stats.govt.nz

The following output indexes will be affected by redevelopments taking effect in the June 2006 quarter:

ANZIND reference	Description
C06	Textile and apparel manufacturing
C08	Paper and paper product manufacturing
C13	Basic metal manufacturing
C14	Sheet and fabricated metal product manufacturing
C15	Transport equipment manufacturing
D01	Electricity generation and supply
D02	Gas supply
D03	Water supply

For technical information contact:
Menaka Saravanaperumal or Nicola Argyle
Wellington 04 931 4600
Email: info@stats.govt.nz

Technical notes

Price index interpretation

Price indexes are used to measure the changes in the level of prices, not the actual level of the prices themselves. The Producers Price Index (PPI) measures prices relating to the production sector of the economy. By comparison, the Consumers Price Index measures prices relating to the household sector and the Labour Cost Index measures prices in the labour market.

The PPI is made up of two types of indexes: the outputs index, which measures changes in the prices received by producers; and the inputs index, which measures changes in the cost of production (excluding labour and capital costs). The Farm Expenses Price Index (FEPI) measures price changes specific to the inputs into the farming industry.

PPI outputs index

The outputs index measures changes in prices received by producers.

The outputs index covers the prices of:

- primary products
- manufactured goods
- revenue from renting and leasing
- the provision of services
- capital work undertaken by own employees
- margins on goods purchased for resale.

The outputs index excludes:

- interest and dividends
- royalties and patent fees
- receipts from insurance claims
- government cash grants and subsidies
- goods and services tax (GST) and other indirect taxes.

These indexes are designed to measure price changes at a level corresponding to the prices received before the addition of commodity taxes or deduction of subsidies.

PPI inputs index

The inputs index measures price changes in costs of production, excluding labour and depreciation costs.

The inputs index covers the prices of:

- materials
- fuels and electricity
- transport and communication
- commission and contract services
- rent and lease of land, buildings, vehicles and plant
- business services
- insurance premiums less claims.

The inputs index excludes:

- wages and salaries (measured in the Labour Cost Index)
- capital expenditure/depreciation (measured in the Capital Goods Price Index)
- ACC levies, land tax, government licence fees, road user charges
- rates
- royalties, patent fees
- bad debts and donations.

GST is excluded when measuring input prices for 45 of the 47 industry inputs indexes. The assumption is made that those involved in activities in these industries are 'registered persons, or businesses' who provide 'taxable supply'. GST paid on intermediate consumption is recoverable under the GST credit offset system and therefore is effectively not part of the ultimate input price. Exceptions include the finance and ownership of owner-occupied dwellings indexes, which include some 'GST exempt' and non-recoverable GST activities. Interest costs are excluded because they are regarded as a cost of capital and not as a payment for a good or service.

Government charges are excluded when they are used to raise tax revenue rather than the payment for a good or service purchased from the government. This is consistent with the System of National Accounts.

Farm Expenses Price Index

The Farm Expenses Price Index (FEPI) measures price changes of fixed inputs of goods and services to the farming industry. It does not fully measure changes in the production costs of farming. This is because production costs are not solely dependent on price movements, but are also dependent on factors that affect productivity, such as technological advances, management efficiency and climate fluctuations.

Capital expenditure and depreciation are not covered. (For price indexes of capital expenditure, refer to the Capital Goods Price Index.)

Coverage

The indexes are calculated quarterly from price quotes, which are collected mainly by postal survey. Approximately 13,000 individual commodity items are surveyed from about 3,000 respondents. Prices are generally collected each quarter, according to those prevailing on the fifteenth of the middle month of the quarter being measured. Prices may be obtained monthly or annually, depending on the nature of the item.

Calculation

The PPI and FEPI are Laspeyres base-weighted price index series. The weightings are determined by the relative importance of commodities and businesses within the industry or industry group. Information from various surveys and censuses and other sources is used to determine the weightings. Further information about this is available on request.

Industry classification

The PPI inputs and outputs indexes cover all the major market industry groups as defined by the Australian and New Zealand Standard Industrial Classification 1993 (ANZSIC). Index numbers for industry indexes based on this classification are available from the June 1994 quarter.

The all industries inputs index is made up of 47 industry indexes. Outputs indexes are not available for public administration and defence; education; health and community services; cultural and recreational services; and personal and other services industries, as reliable estimates of output prices have yet to be developed.

Customised price indexes

Statistics NZ has a large number of unpublished sub-industry and representative commodity price indexes. These indexes are available at a small charge to cover dissemination costs.

Back series of indexes

Statistics NZ will provide tables of the complete back series of the current PPI and FEPI indexes on request.

More information

For more information, follow the [link](#) from the Technical notes of this release on the Statistics NZ website.

Copyright

Information obtained from Statistics NZ may be freely used, reproduced, or quoted unless otherwise specified. In all cases Statistics NZ must be acknowledged as the source.

Liability

While care has been used in processing, analysing and extracting information, Statistics NZ gives no warranty that the information supplied is free from error. Statistics NZ shall not be liable for any loss suffered through the use, directly or indirectly, of any information, product or service.

Timing

Timed statistical releases are delivered using postal and electronic services provided by third parties. Delivery of these releases may be delayed by circumstances outside the control of Statistics NZ. Statistics NZ accepts no responsibility for any such delays.

Next release ...

Producers Price Index: June 2006 quarter will be released on 15 August 2006.

Statistics New Zealand: The first source of independent information for your key decisions.

Tables

The following tables can be downloaded from the Statistics New Zealand website in Excel 97 format. If you do not have access to Excel 97 or higher, you may use the Excel file viewer to view, print and export the contents of the file.

List of tables

Producers Price Index

1. Producers Price Index, outputs – index numbers
2. Producers Price Index, inputs – index numbers
3. Producers Price Index, outputs, percentage change from previous quarter
4. Producers Price Index, inputs, percentage change from previous quarter
5. Producers Price Index, outputs – selected industries
6. Producers Price Index, inputs – selected industries
7. Producers Price Index, selected commodities – index numbers and percentage changes

Farm Expenses Price Index

- 1.01. Farm Expenses Price Index, all farms – index numbers
- 1.02. Farm Expenses Price Index, all farms, percentage change from previous quarter
- 1.03. Farm Expenses Price Index, all farms, percentage change from same quarter of the previous year
2. Farm Expenses Price Index, sheep and beef farms – index numbers
3. Farm Expenses Price Index, dairy farms – index numbers
4. Farm Expenses Price Index, horticultural farms – index numbers
5. Farm Expenses Price Index, cropping and other farms – index numbers

Producers Price Index: March 2006 quarter

Table 1

Producers Price Index
Outputs – index numbers
 Base: December 1997 quarter (=1000)

Industry group	Series ref: PPIQ	Quarter									
		2004				2005				2006	
		Mar	Jun	Sep	Dec	Mar	Jun	Sep	Dec	Mar	
A	Agriculture, forestry and fishing	<i>SUA</i>	1154	1176	1210	1204	1172	1180	1214	1192	1140
A01	Horticulture and fruit growing	<i>SUA01</i>	1267	1266	1304	1336	1268	1258	1285	1318	1242
A02	Livestock and cropping farming	<i>SUA02</i>	1241	1296	1409	1394	1316	1336	1412	1339	1214
A03	Dairy cattle farming	<i>SUA03</i>	1135	1142	1143	1140	1130	1138	1162	1147	1128
A04	Other farming	<i>SUA04</i>	1085	1093	1106	1128	1108	1107	1116	1122	1074
A05	Services to ag, hunting and trapping	<i>SUA05</i>	1215	1218	1243	1257	1262	1272	1297	1321	1340
A06	Forestry and logging	<i>SUA06</i>	939	956	915	874	904	905	897	895	913
A07	Fishing	<i>SUA07</i>	1203	1213	1201	1217	1197	1209	1232	1221	1218
B	Mining	<i>SUB</i>	1263	1408	1381	1463	1441	1547	1606	1729	1764
C	Manufacturing	<i>SUC</i>	1131	1157	1163	1165	1180	1193	1208	1201	1213
C01	Meat and meat product mfg	<i>SUC01</i>	1188	1276	1260	1218	1252	1251	1274	1181	1195
C02	Dairy product mfg	<i>SUC02</i>	1109	1171	1183	1208	1233	1284	1331	1310	1358
C03	Other food mfg	<i>SUC03</i>	1189	1190	1189	1188	1194	1190	1197	1217	1223
C04 C05	Tobacco, beverage and malt mfg ⁽¹⁾	<i>SUC04</i>	1251	1251	1279	1287	1301	1303	1329	1328	1332
C06	Textile and apparel mfg	<i>SUC06</i>	1080	1088	1082	1068	1057	1054	1053	1034	1035
C07	Wood product mfg	<i>SUC07</i>	1033	1048	1038	1041	1042	1062	1064	1079	1096
C08	Paper and paper product mfg	<i>SUC08</i>	1062	1112	1077	1062	1060	1061	1055	1066	1061
C09	Printing, publishing and recorded media	<i>SUC09</i>	1252	1251	1268	1271	1287	1299	1308	1310	1314
C10	Petroleum, coal and basic chemical mfg	<i>SUC10</i>	1179	1164	1224	1233	1215	1247	1296	1335	1260
C11	Rubber plastics and other chemical mfg	<i>SUC11</i>	1105	1109	1118	1143	1152	1165	1170	1159	1165
C12	Non-metallic mineral product mfg	<i>SUC12</i>	1093	1111	1124	1134	1172	1179	1193	1201	1213
C13	Basic metal mfg	<i>SUC13</i>	1055	1080	1090	1098	1248	1205	1213	1199	1222
C14	Sheet and fabricated metal product mfg	<i>SUC14</i>	1073	1081	1101	1114	1129	1163	1189	1196	1203
C15	Transport equipment mfg	<i>SUC15</i>	1086	1105	1102	1106	1113	1123	1125	1120	1138
C16	Machinery and equipment mfg	<i>SUC16</i>	1146	1185	1194	1210	1209	1232	1236	1251	1300
C17	Other manufacturing	<i>SUC17</i>	1102	1129	1147	1149	1155	1169	1171	1175	1183
D	Electricity, gas and water⁽²⁾	<i>SUD</i>	1277	1201	1151	1172	1209	1262	1365	1474	1561
D01	Electricity generation and supply	<i>SUD01</i>	1278	1190	1129	1148	1179	1242	1360	1480	1570
D02	Gas supply	<i>SUD02</i>	1350	1351	1393	1457	1579	1559	1545	1595	1696
E	Construction⁽³⁾	<i>SUE</i>	1150	1179	1203	1216	1229	1248	1272	1287	1305
F	Wholesale trade⁽³⁾	<i>SUF</i>	1145	1164	1169	1172	1174	1195	1230	1219	1238
G	Retail trade⁽³⁾	<i>SUG</i>	1113	1121	1120	1124	1129	1136	1149	1149	1157
H	Accommodation, cafes and restaurants⁽³⁾	<i>SUH</i>	1152	1151	1165	1180	1192	1186	1197	1212	1223
I	Transport and storage	<i>SUI</i>	1130	1143	1152	1161	1163	1172	1193	1198	1209
I01	Road transport	<i>SUI01</i>	1137	1140	1157	1169	1179	1190	1207	1227	1251
I03	Water transport	<i>SUI03</i>	991	1078	1035	1009	1013	1044	1073	1073	1126
I04	Air transport	<i>SUI04</i>	1144	1157	1160	1173	1169	1181	1210	1201	1202
I02 I09	Rail, other transport and storage services ⁽⁴⁾	<i>SUI09</i>	1128	1140	1155	1162	1161	1162	1176	1182	1184
J	Communication services⁽³⁾	<i>SUJ</i>	894	890	884	888	886	886	904	906	912

For footnotes, see end of table.

Producers Price Index: March 2006 quarter

Table 1
continued

Producers Price Index
Outputs – index numbers
Base: December 1997 quarter (=1000)

Industry group	Series ref: PPIQ	Quarter									
		2004				2005				2006	
		Mar	Jun	Sep	Dec	Mar	Jun	Sep	Dec	Mar	
K Finance and insurance	<i>SUK</i>	1180	1182	1211	1215	1210	1198	1199	1205	1187	
K01 Finance	<i>SUK01</i>	1170	1162	1207	1199	1187	1162	1158	1168	1132	
K02 Insurance	<i>SUK02</i>	1165	1177	1181	1190	1187	1197	1192	1192	1198	
K03 Services to finance and insurance	<i>SUK03</i>	1262	1294	1300	1357	1380	1384	1430	1420	1451	
L Property and business services	<i>SUL</i>	1117	1127	1136	1142	1152	1166	1175	1179	1188	
L01 Real estate	<i>SUL01</i>	1102	1114	1125	1130	1142	1161	1179	1187	1198	
L02 Ownership of owner-occupied dwellings	<i>SUL02</i>	1087	1094	1100	1104	1108	1115	1122	1123	1132	
L03 Other property services	<i>SUL03</i>	1039	1019	1030	1037	1059	1043	1048	1070	1078	
L04 Business services	<i>SUL04</i>	1158	1173	1183	1190	1204	1223	1228	1233	1239	
P Cultural and recreational services⁽³⁾	<i>SUP</i>	1243	1246	1257	1266	1276	1288	1300	1311	1316	
Q Personal and other services⁽³⁾	<i>SUQ</i>	1168	1184	1196	1205	1213	1221	1250	1256	1268	
X01 Agriculture	<i>SUX01</i>	1200	1227	1283	1283	1232	1242	1287	1257	1180	
X05 Food, beverages and tobacco	<i>SUX05</i>	1170	1215	1217	1213	1234	1249	1275	1247	1268	
X08 Paper, printing and publishing	<i>SUX08</i>	1159	1182	1174	1168	1175	1182	1184	1190	1189	
X09 Chemicals, petroleum and plastics	<i>SUX09</i>	1134	1131	1160	1178	1176	1198	1220	1228	1202	
X12 Machinery and metal products	<i>SUX12</i>	1113	1139	1150	1163	1169	1194	1206	1216	1245	
9 ALL INDUSTRIES	<i>SU9</i>	1136	1151	1160	1166	1172	1186	1207	1211	1219	

- (1) Tobacco product manufacturing has been combined with Beverage and malt manufacturing for confidentiality reasons.
(2) The Water supply industry index is not of sufficient quality and a separate index for it is not published.
(3) The series reference has changed, as at the June 2000 quarter, for consistency with series references for other divisions. The composition of this index is unchanged.
(4) Rail transport has been combined with Other transport and storage services for confidentiality reasons.

Producers Price Index: March 2006 quarter

Table 2

Producers Price Index
Inputs – index numbers
 Base: December 1997 quarter (=1000)

Industry group	Series ref: PPIQ	Quarter									
		2004				2005				2006	
		Mar	Jun	Sep	Dec	Mar	Jun	Sep	Dec	Mar	
A	Agriculture, forestry and fishing	<i>SNA</i>	1163	1181	1192	1202	1215	1237	1263	1261	1266
A01	Horticulture and fruit growing	<i>SNA01</i>	1130	1147	1164	1173	1178	1198	1221	1219	1230
A02	Sheep and beef farming ⁽¹⁾	<i>SNA02</i>	1258	1279	1296	1310	1330	1353	1385	1385	1383
A03	Dairy cattle farming	<i>SNA03</i>	1210	1220	1230	1240	1247	1283	1316	1315	1326
A04	Cropping and other farming ⁽¹⁾	<i>SNA04</i>	1160	1174	1187	1210	1242	1259	1282	1260	1268
A05	Services to ag, hunting and trapping	<i>SNA05</i>	1211	1237	1262	1270	1278	1302	1340	1341	1355
A06	Forestry and logging	<i>SNA06</i>	1001	1020	1011	1009	1017	1034	1043	1042	1045
A07	Fishing	<i>SNA07</i>	1097	1114	1120	1140	1129	1137	1167	1162	1177
B	Mining	<i>SNB</i>	1136	1170	1181	1188	1195	1214	1234	1255	1269
C	Manufacturing	<i>SNC</i>	1109	1136	1154	1160	1154	1166	1185	1187	1177
C01	Meat and meat product mfg	<i>SNC01</i>	1137	1189	1323	1318	1240	1263	1359	1295	1163
C02	Dairy product mfg	<i>SNC02</i>	1109	1124	1110	1114	1116	1119	1130	1133	1134
C03	Other food mfg	<i>SNC03</i>	1122	1115	1122	1142	1132	1143	1160	1172	1168
C04 C05	Tobacco, beverage and malt mfg ⁽²⁾	<i>SNC04</i>	1196	1203	1196	1204	1220	1231	1270	1279	1285
C06	Textile and apparel mfg	<i>SNC06</i>	1008	1031	1020	999	983	991	991	984	979
C07	Wood product mfg	<i>SNC07</i>	1026	1036	1035	1013	1023	1028	1030	1037	1043
C08	Paper and paper product mfg	<i>SNC08</i>	1069	1153	1139	1136	1139	1149	1155	1164	1158
C09	Printing, publishing and recorded media	<i>SNC09</i>	1128	1140	1132	1138	1137	1132	1142	1145	1151
C10	Petroleum, coal and basic chemical mfg	<i>SNC10</i>	1177	1198	1223	1232	1274	1326	1331	1353	1385
C11	Rubber plastics and other chemical mfg	<i>SNC11</i>	1094	1113	1126	1151	1176	1190	1198	1200	1212
C12	Non-metallic mineral product mfg	<i>SNC12</i>	1146	1164	1178	1187	1210	1221	1240	1251	1269
C13	Basic metal mfg	<i>SNC13</i>	1213	1247	1309	1338	1320	1294	1281	1337	1354
C14	Sheet and fabricated metal product mfg	<i>SNC14</i>	1058	1129	1136	1152	1141	1172	1198	1214	1214
C15	Transport equipment mfg	<i>SNC15</i>	1098	1113	1114	1121	1121	1128	1134	1145	1147
C16	Machinery and equipment mfg	<i>SNC16</i>	1127	1173	1190	1204	1206	1213	1220	1236	1253
C17	Other manufacturing	<i>SNC17</i>	1102	1111	1121	1125	1130	1140	1150	1159	1169
D	Electricity, gas and water⁽³⁾	<i>SND</i>	1305	1182	1104	1098	1142	1202	1344	1481	1604
D01	Electricity generation and supply	<i>SND01</i>	1334	1186	1094	1083	1124	1196	1364	1517	1651
D02	Gas supply	<i>SND02</i>	1151	1155	1157	1190	1304	1270	1250	1333	1440
E	Construction⁽⁴⁾	<i>SNE</i>	1178	1205	1222	1238	1253	1285	1310	1327	1364
F	Wholesale trade⁽⁴⁾	<i>SNF</i>	1176	1211	1265	1268	1279	1340	1458	1496	1507
G	Retail trade⁽⁴⁾	<i>SNG</i>	1130	1141	1147	1159	1162	1170	1184	1196	1200
H	Accommodation, cafes and restaurants⁽⁴⁾	<i>SNH</i>	1141	1147	1163	1174	1175	1182	1196	1204	1200
I	Transport and storage	<i>SNI</i>	1187	1238	1252	1298	1269	1340	1377	1420	1456
I01	Road transport	<i>SNI01</i>	1181	1213	1220	1251	1262	1292	1343	1368	1420
I03	Water transport	<i>SNI03</i>	1073	1103	1102	1114	1121	1144	1183	1208	1227
I04	Air transport	<i>SNI04</i>	1252	1345	1369	1445	1357	1499	1535	1608	1643
I02 I09	Rail, other transport and storage services ⁽⁵⁾	<i>SNI09</i>	1107	1114	1120	1145	1158	1166	1188	1205	1228
J	Communication services⁽⁴⁾	<i>SNJ</i>	1006	1018	1014	1022	1030	1037	1046	1049	1062

For footnotes, see end of table.

Producers Price Index: March 2006 quarter

Table 2
continued

Producers Price Index
Inputs – index numbers
Base: December 1997 quarter (=1000)

Industry group	Series ref: PPIQ	Quarter									
		2004				2005				2006	
		Mar	Jun	Sep	Dec	Mar	Jun	Sep	Dec	Mar	
K Finance and insurance	<i>SNK</i>	1135	1142	1147	1154	1160	1168	1178	1185	1194	
K01 Finance	<i>SNK01</i>	1131	1137	1142	1148	1156	1162	1173	1181	1188	
K02 Insurance	<i>SNK02</i>	1142	1149	1153	1162	1165	1175	1182	1189	1200	
K03 Services to finance and insurance	<i>SNK03</i>	1135	1144	1151	1160	1167	1177	1189	1196	1209	
L Property and business services	<i>SNL</i>	1146	1156	1165	1175	1181	1198	1211	1221	1234	
L01 Real estate	<i>SNL01</i>	1181	1201	1212	1219	1232	1261	1281	1291	1309	
L02 Ownership of owner-occupied dwellings	<i>SNL02</i>	1153	1167	1184	1196	1202	1213	1239	1250	1268	
L03 Other property services	<i>SNL03</i>	1155	1166	1176	1195	1198	1215	1228	1242	1259	
L04 Business services	<i>SNL04</i>	1131	1137	1142	1151	1156	1170	1178	1187	1196	
M Public administration and defence⁽⁴⁾⁽⁶⁾	<i>SNM</i>	1135	1148	1159	1169	1180	1192	1207	1215	1226	
M01 Central government and defence ⁽⁷⁾⁽⁸⁾	<i>SNM01</i>	1124	1134	1142	1152	1162	1172	1186	1194	1202	
M02 Local government and civil defence ⁽⁹⁾	<i>SNM02</i>	1150	1166	1182	1191	1203	1219	1234	1243	1257	
N Education⁽⁴⁾	<i>SNN</i>	1117	1120	1128	1133	1140	1149	1158	1163	1169	
O Health and community services⁽⁴⁾	<i>SNO</i>	1113	1118	1123	1129	1134	1150	1160	1167	1173	
P Cultural and recreational services⁽⁴⁾	<i>SNP</i>	1130	1139	1147	1154	1158	1175	1184	1193	1203	
Q Personal and other services⁽⁴⁾	<i>SNQ</i>	1177	1191	1201	1213	1222	1232	1266	1276	1307	
X01 Agriculture	<i>SNX01</i>	1212	1230	1245	1258	1274	1299	1330	1326	1331	
X05 Food, beverage and tobacco	<i>SNX05</i>	1128	1147	1182	1188	1165	1177	1216	1203	1165	
X08 Paper, printing and publishing	<i>SNX08</i>	1096	1147	1136	1137	1138	1141	1149	1155	1155	
X09 Chemicals, petroleum and plastics	<i>SNX09</i>	1127	1146	1164	1183	1214	1244	1250	1260	1280	
X12 Machinery and metal products	<i>SNX12</i>	1103	1153	1164	1178	1175	1191	1204	1219	1228	
8 All industries excl admin health education	<i>SN8</i>	1141	1160	1178	1187	1190	1215	1251	1267	1278	
9 ALL INDUSTRIES	<i>SN9</i>	1140	1158	1175	1185	1188	1212	1247	1262	1273	

(1) Agriculture input indexes by farm type are based on Farm Expenses Price Index (FEPI) categories, not ANZSIC categories. Output Agriculture indexes by farm type are based on ANZSIC.

(2) Tobacco product manufacturing has been combined with Beverage and malt manufacturing for confidentiality reasons.

(3) The Water supply industry index is not of sufficient quality and a separate index for it is not published.

(4) The series reference has changed, as at the June 2000 quarter, for consistency with series references for other divisions. The composition of this index is unchanged.

(5) Rail transport has been combined with Other transport and storage services for confidentiality reasons.

(6) The official industry group title of Government administration, defence, public order and safety services has been abbreviated to Public administration and defence in this publication.

(7) The series reference PPIQ.SNM01 was published prior to the June 2000 quarter and differs from this series. The series for Government administration, defence, public order and safety service, which includes both central and local government services, is now published with the series reference PPIQ.SNM.

(8) The official sub-industry group title of Central government administration, defence, public order and safety services has been abbreviated to Central government and defence in this publication.

(9) The official sub-industry group title of Local government administration services and civil defence has been abbreviated to Local government and civil defence in this publication.

Producers Price Index: March 2006 quarter

Table 3

Producers Price Index
Outputs
Percentage change from previous quarter

Industry group	Series ref: PPIQ	Quarter									
		2004				2005				2006	
		Mar	Jun	Sep	Dec	Mar	Jun	Sep	Dec	Mar	
A	Agriculture, forestry and fishing	<i>SUA</i>	-3.0	1.9	2.9	-0.5	-2.7	0.7	2.9	-1.8	-4.4
A01	Horticulture and fruit growing	<i>SUA01</i>	0.8	-0.1	3.0	2.5	-5.1	-0.8	2.1	2.6	-5.8
A02	Livestock and cropping farming	<i>SUA02</i>	-7.0	4.4	8.7	-1.1	-5.6	1.5	5.7	-5.2	-9.3
A03	Dairy cattle farming	<i>SUA03</i>	-1.1	0.6	0.1	-0.3	-0.9	0.7	2.1	-1.3	-1.7
A04	Other farming	<i>SUA04</i>	-4.3	0.7	1.2	2.0	-1.8	-0.1	0.8	0.5	-4.3
A05	Services to ag, hunting and trapping	<i>SUA05</i>	1.3	0.2	2.1	1.1	0.4	0.8	2.0	1.9	1.4
A06	Forestry and logging	<i>SUA06</i>	-0.6	1.8	-4.3	-4.5	3.4	0.1	-0.9	-0.2	2.0
A07	Fishing	<i>SUA07</i>	-2.5	0.8	-1.0	1.3	-1.6	1.0	1.9	-0.9	-0.2
B	Mining	<i>SUB</i>	-0.7	11.5	-1.9	5.9	-1.5	7.4	3.8	7.7	2.0
C	Manufacturing	<i>SUC</i>	0.4	2.3	0.5	0.2	1.3	1.1	1.3	-0.6	1.0
C01	Meat and meat product mfg	<i>SUC01</i>	-0.8	7.4	-1.3	-3.3	2.8	-0.1	1.8	-7.3	1.2
C02	Dairy product mfg	<i>SUC02</i>	1.7	5.6	1.0	2.1	2.1	4.1	3.7	-1.6	3.7
C03	Other food mfg	<i>SUC03</i>	-0.3	0.1	-0.1	-0.1	0.5	-0.3	0.6	1.7	0.5
C04 C05	Tobacco, beverage and malt mfg ⁽¹⁾	<i>SUC04</i>	2.3	0.0	2.2	0.6	1.1	0.2	2.0	-0.1	0.3
C06	Textile and apparel mfg	<i>SUC06</i>	-0.7	0.7	-0.6	-1.3	-1.0	-0.3	-0.1	-1.8	0.1
C07	Wood product mfg	<i>SUC07</i>	-0.5	1.5	-1.0	0.3	0.1	1.9	0.2	1.4	1.6
C08	Paper and paper product mfg	<i>SUC08</i>	-0.7	4.7	-3.1	-1.4	-0.2	0.1	-0.6	1.0	-0.5
C09	Printing, publishing and recorded media	<i>SUC09</i>	0.2	-0.1	1.4	0.2	1.3	0.9	0.7	0.2	0.3
C10	Petroleum, coal and basic chemical mfg	<i>SUC10</i>	2.4	-1.3	5.2	0.7	-1.5	2.6	3.9	3.0	-5.6
C11	Rubber plastics and other chemical mfg	<i>SUC11</i>	-0.3	0.4	0.8	2.2	0.8	1.1	0.4	-0.9	0.5
C12	Non-metallic mineral product mfg	<i>SUC12</i>	0.3	1.6	1.2	0.9	3.4	0.6	1.2	0.7	1.0
C13	Basic metal mfg	<i>SUC13</i>	2.3	2.4	0.9	0.7	13.7	-3.4	0.7	-1.2	1.9
C14	Sheet and fabricated metal product mfg	<i>SUC14</i>	1.6	0.7	1.9	1.2	1.3	3.0	2.2	0.6	0.6
C15	Transport equipment mfg	<i>SUC15</i>	-0.3	1.7	-0.3	0.4	0.6	0.9	0.2	-0.4	1.6
C16	Machinery and equipment mfg	<i>SUC16</i>	1.1	3.4	0.8	1.3	-0.1	1.9	0.3	1.2	3.9
C17	Other manufacturing	<i>SUC17</i>	0.2	2.5	1.6	0.2	0.5	1.2	0.2	0.3	0.7
D	Electricity, gas and water⁽²⁾	<i>SUD</i>	-6.7	-6.0	-4.2	1.8	3.2	4.4	8.2	8.0	5.9
D01	Electricity generation and supply	<i>SUD01</i>	-8.0	-6.9	-5.1	1.7	2.7	5.3	9.5	8.8	6.1
D02	Gas supply	<i>SUD02</i>	6.4	0.1	3.1	4.6	8.4	-1.3	-0.9	3.2	6.3
E	Construction⁽³⁾	<i>SUE</i>	2.0	2.5	2.0	1.1	1.1	1.5	1.9	1.2	1.4
F	Wholesale trade⁽³⁾	<i>SUF</i>	-0.6	1.7	0.4	0.3	0.2	1.8	2.9	-0.9	1.6
G	Retail trade⁽³⁾	<i>SUG</i>	0.5	0.7	-0.1	0.4	0.4	0.6	1.1	0.0	0.7
H	Accommodation, cafes and restaurants⁽³⁾	<i>SUH</i>	1.1	-0.1	1.2	1.3	1.0	-0.5	0.9	1.3	0.9
I	Transport and storage	<i>SUI</i>	-1.0	1.2	0.8	0.8	0.2	0.8	1.8	0.4	0.9
I01	Road transport	<i>SUI01</i>	0.0	0.3	1.5	1.0	0.9	0.9	1.4	1.7	2.0
I03	Water transport	<i>SUI03</i>	-3.0	8.8	-4.0	-2.5	0.4	3.1	2.8	0.0	4.9
I04	Air transport	<i>SUI04</i>	-2.1	1.1	0.3	1.1	-0.3	1.0	2.5	-0.7	0.1
I02 I09	Rail, other transport and storage services ⁽⁴⁾	<i>SUI09</i>	-0.5	1.1	1.3	0.6	-0.1	0.1	1.2	0.5	0.2
J	Communication services⁽³⁾	<i>SUJ</i>	0.0	-0.4	-0.7	0.5	-0.2	0.0	2.0	0.2	0.7

For footnotes, see end of table.

Producers Price Index: March 2006 quarter

Table 3
continued

Producers Price Index
Outputs
Percentage change from previous quarter

Industry group	Series ref: PPIQ	Quarter									
		2004				2005				2006	
		Mar	Jun	Sep	Dec	Mar	Jun	Sep	Dec	Mar	
K Finance and insurance	<i>SUK</i>	1.1	0.2	2.5	0.3	-0.4	-1.0	0.1	0.5	-1.5	
K01 Finance	<i>SUK01</i>	1.4	-0.7	3.9	-0.7	-1.0	-2.1	-0.3	0.9	-3.1	
K02 Insurance	<i>SUK02</i>	0.0	1.0	0.3	0.8	-0.3	0.8	-0.4	0.0	0.5	
K03 Services to finance and insurance	<i>SUK03</i>	1.7	2.5	0.5	4.4	1.7	0.3	3.3	-0.7	2.2	
L Property and business services	<i>SUL</i>	1.1	0.9	0.8	0.5	0.9	1.2	0.8	0.3	0.8	
L01 Real estate	<i>SUL01</i>	1.6	1.1	1.0	0.4	1.1	1.7	1.6	0.7	0.9	
L02 Ownership of owner-occupied dwellings	<i>SUL02</i>	1.4	0.6	0.5	0.4	0.4	0.6	0.6	0.1	0.8	
L03 Other property services	<i>SUL03</i>	0.9	-1.9	1.1	0.7	2.1	-1.5	0.5	2.1	0.7	
L04 Business services	<i>SUL04</i>	0.6	1.3	0.9	0.6	1.2	1.6	0.4	0.4	0.5	
P Cultural and recreational services⁽³⁾	<i>SUP</i>	1.0	0.2	0.9	0.7	0.8	0.9	0.9	0.8	0.4	
Q Personal and other services⁽³⁾	<i>SUQ</i>	1.7	1.4	1.0	0.8	0.7	0.7	2.4	0.5	1.0	
X01 Agriculture	<i>SUX01</i>	-3.8	2.2	4.6	0.0	-4.0	0.8	3.6	-2.3	-6.1	
X05 Food, beverages and tobacco	<i>SUX05</i>	0.4	3.8	0.2	-0.3	1.7	1.2	2.1	-2.2	1.7	
X08 Paper, printing and publishing	<i>SUX08</i>	-0.1	2.0	-0.7	-0.5	0.6	0.6	0.2	0.5	-0.1	
X09 Chemicals, petroleum and plastics	<i>SUX09</i>	0.8	-0.3	2.6	1.6	-0.2	1.9	1.8	0.7	-2.1	
X12 Machinery and metal products	<i>SUX12</i>	1.0	2.3	1.0	1.1	0.5	2.1	1.0	0.8	2.4	
9 ALL INDUSTRIES	<i>SU9</i>	-0.1	1.3	0.8	0.5	0.5	1.2	1.8	0.3	0.7	

- (1) Tobacco product manufacturing has been combined with Beverage and malt manufacturing for confidentiality reasons.
(2) The Water supply industry index is not of sufficient quality and a separate index for it is not published.
(3) The series reference has changed, as at the June 2000 quarter, for consistency with series references for other divisions. The composition of this index is unchanged.
(4) Rail transport has been combined with Other transport and storage services for confidentiality reasons.

Producers Price Index: March 2006 quarter

Table 4

Producers Price Index
Inputs
Percentage change from previous quarter

Industry group	Series ref: PPIQ	Quarter									
		2004				2005				2006	
		Mar	Jun	Sep	Dec	Mar	Jun	Sep	Dec	Mar	
A	Agriculture, forestry and fishing	<i>SNA</i>	0.0	1.5	0.9	0.8	1.1	1.8	2.1	-0.2	0.4
A01	Horticulture and fruit growing	<i>SNA01</i>	0.1	1.5	1.5	0.8	0.4	1.7	1.9	-0.2	0.9
A02	Sheep and beef farming ⁽¹⁾	<i>SNA02</i>	0.5	1.7	1.3	1.1	1.5	1.7	2.4	0.0	-0.1
A03	Dairy cattle farming	<i>SNA03</i>	0.2	0.8	0.8	0.8	0.6	2.9	2.6	-0.1	0.8
A04	Cropping and other farming ⁽¹⁾	<i>SNA04</i>	0.3	1.2	1.1	1.9	2.6	1.4	1.8	-1.7	0.6
A05	Services to ag, hunting and trapping	<i>SNA05</i>	0.5	2.1	2.0	0.6	0.6	1.9	2.9	0.1	1.0
A06	Forestry and logging	<i>SNA06</i>	-0.3	1.9	-0.9	-0.2	0.8	1.7	0.9	-0.1	0.3
A07	Fishing	<i>SNA07</i>	-2.1	1.5	0.5	1.8	-1.0	0.7	2.6	-0.4	1.3
B	Mining	<i>SNB</i>	-0.5	3.0	0.9	0.6	0.6	1.6	1.6	1.7	1.1
C	Manufacturing	<i>SNC</i>	-1.0	2.4	1.6	0.5	-0.5	1.0	1.6	0.2	-0.8
C01	Meat and meat product mfg	<i>SNC01</i>	-8.4	4.6	11.3	-0.4	-5.9	1.9	7.6	-4.7	-10.2
C02	Dairy product mfg	<i>SNC02</i>	0.2	1.4	-1.2	0.4	0.2	0.3	1.0	0.3	0.1
C03	Other food mfg	<i>SNC03</i>	-0.4	-0.6	0.6	1.8	-0.9	1.0	1.5	1.0	-0.3
C04 C05	Tobacco, beverage and malt mfg ⁽²⁾	<i>SNC04</i>	0.4	0.6	-0.6	0.7	1.3	0.9	3.2	0.7	0.5
C06	Textile and apparel mfg	<i>SNC06</i>	-2.6	2.3	-1.1	-2.1	-1.6	0.8	0.0	-0.7	-0.5
C07	Wood product mfg	<i>SNC07</i>	0.0	1.0	-0.1	-2.1	1.0	0.5	0.2	0.7	0.6
C08	Paper and paper product mfg	<i>SNC08</i>	-1.3	7.9	-1.2	-0.3	0.3	0.9	0.5	0.8	-0.5
C09	Printing, publishing and recorded media	<i>SNC09</i>	0.5	1.1	-0.7	0.5	-0.1	-0.4	0.9	0.3	0.5
C10	Petroleum, coal and basic chemical mfg	<i>SNC10</i>	0.3	1.8	2.1	0.7	3.4	4.1	0.4	1.7	2.4
C11	Rubber plastics and other chemical mfg	<i>SNC11</i>	-0.9	1.7	1.2	2.2	2.2	1.2	0.7	0.2	1.0
C12	Non-metallic mineral product mfg	<i>SNC12</i>	0.6	1.6	1.2	0.8	1.9	0.9	1.6	0.9	1.4
C13	Basic metal mfg	<i>SNC13</i>	5.8	2.8	5.0	2.2	-1.3	-2.0	-1.0	4.4	1.3
C14	Sheet and fabricated metal product mfg	<i>SNC14</i>	1.1	6.7	0.6	1.4	-1.0	2.7	2.2	1.3	0.0
C15	Transport equipment mfg	<i>SNC15</i>	0.1	1.4	0.1	0.6	0.0	0.6	0.5	1.0	0.2
C16	Machinery and equipment mfg	<i>SNC16</i>	0.6	4.1	1.4	1.2	0.2	0.6	0.6	1.3	1.4
C17	Other manufacturing	<i>SNC17</i>	0.3	0.8	0.9	0.4	0.4	0.9	0.9	0.8	0.9
D	Electricity, gas and water⁽³⁾	<i>SND</i>	-9.7	-9.4	-6.6	-0.5	4.0	5.3	11.8	10.2	8.3
D01	Electricity generation and supply	<i>SND01</i>	-11.1	-11.1	-7.8	-1.0	3.8	6.4	14.0	11.2	8.8
D02	Gas supply	<i>SND02</i>	0.2	0.3	0.2	2.9	9.6	-2.6	-1.6	6.6	8.0
E	Construction⁽⁴⁾	<i>SNE</i>	1.4	2.3	1.4	1.3	1.2	2.6	1.9	1.3	2.8
F	Wholesale trade⁽⁴⁾	<i>SNF</i>	-0.1	3.0	4.5	0.2	0.9	4.8	8.8	2.6	0.7
G	Retail trade⁽⁴⁾	<i>SNG</i>	-0.3	1.0	0.5	1.0	0.3	0.7	1.2	1.0	0.3
H	Accommodation, cafes and restaurants⁽⁴⁾	<i>SNH</i>	-0.2	0.5	1.4	0.9	0.1	0.6	1.2	0.7	-0.3
I	Transport and storage	<i>SNI</i>	0.0	4.3	1.1	3.7	-2.2	5.6	2.8	3.1	2.5
I01	Road transport	<i>SNI01</i>	0.1	2.7	0.6	2.5	0.9	2.4	3.9	1.9	3.8
I03	Water transport	<i>SNI03</i>	-1.2	2.8	-0.1	1.1	0.6	2.1	3.4	2.1	1.6
I04	Air transport	<i>SNI04</i>	0.2	7.4	1.8	5.6	-6.1	10.5	2.4	4.8	2.2
I02 I09	Rail, other transport and storage services ⁽⁵⁾	<i>SNI09</i>	0.0	0.6	0.5	2.2	1.1	0.7	1.9	1.4	1.9
J	Communication services⁽⁴⁾	<i>SNJ</i>	1.0	1.2	-0.4	0.8	0.8	0.7	0.9	0.3	1.2

For footnotes, see end of table.

Producers Price Index: March 2006 quarter

Table 4
continued

Producers Price Index
Inputs
Percentage change from previous quarter

Industry group	Series ref: PPIQ	Quarter									
		2004				2005				2006	
		Mar	Jun	Sep	Dec	Mar	Jun	Sep	Dec	Mar	
K Finance and insurance	<i>SNK</i>	0.4	0.6	0.4	0.6	0.5	0.7	0.9	0.6	0.8	
K01 Finance	<i>SNK01</i>	0.3	0.5	0.4	0.5	0.7	0.5	0.9	0.7	0.6	
K02 Insurance	<i>SNK02</i>	0.4	0.6	0.3	0.8	0.3	0.9	0.6	0.6	0.9	
K03 Services to finance and insurance	<i>SNK03</i>	0.5	0.8	0.6	0.8	0.6	0.9	1.0	0.6	1.1	
L Property and business services	<i>SNL</i>	0.8	0.9	0.8	0.9	0.5	1.4	1.1	0.8	1.1	
L01 Real estate	<i>SNL01</i>	1.6	1.7	0.9	0.6	1.1	2.4	1.6	0.8	1.4	
L02 Ownership of owner-occupied dwellings	<i>SNL02</i>	0.8	1.2	1.5	1.0	0.5	0.9	2.1	0.9	1.4	
L03 Other property services	<i>SNL03</i>	0.3	1.0	0.9	1.6	0.3	1.4	1.1	1.1	1.4	
L04 Business services	<i>SNL04</i>	0.5	0.5	0.4	0.8	0.4	1.2	0.7	0.8	0.8	
M Public administration and defence⁽⁴⁾⁽⁶⁾	<i>SNM</i>	0.9	1.1	1.0	0.9	0.9	1.0	1.3	0.7	0.9	
M01 Central government and defence ⁽⁷⁾⁽⁸⁾	<i>SNM01</i>	0.6	0.9	0.7	0.9	0.9	0.9	1.2	0.7	0.7	
M02 Local government and civil defence ⁽⁹⁾	<i>SNM02</i>	1.4	1.4	1.4	0.8	1.0	1.3	1.2	0.7	1.1	
N Education⁽⁴⁾	<i>SNN</i>	0.5	0.3	0.7	0.4	0.6	0.8	0.8	0.4	0.5	
O Health and community services⁽⁴⁾	<i>SNO</i>	0.4	0.4	0.4	0.5	0.4	1.4	0.9	0.6	0.5	
P Cultural and recreational services⁽⁴⁾	<i>SNP</i>	0.4	0.8	0.7	0.6	0.3	1.5	0.8	0.8	0.8	
Q Personal and other services⁽⁴⁾	<i>SNQ</i>	1.4	1.2	0.8	1.0	0.7	0.8	2.8	0.8	2.4	
X01 Agriculture	<i>SNX01</i>	0.3	1.5	1.2	1.0	1.3	2.0	2.4	-0.3	0.4	
X05 Food, beverage and tobacco	<i>SNX05</i>	-2.6	1.7	3.1	0.5	-1.9	1.0	3.3	-1.1	-3.2	
X08 Paper, printing and publishing	<i>SNX08</i>	-0.5	4.7	-1.0	0.1	0.1	0.3	0.7	0.5	0.0	
X09 Chemicals, petroleum and plastics	<i>SNX09</i>	-0.4	1.7	1.6	1.6	2.6	2.5	0.5	0.8	1.6	
X12 Machinery and metal products	<i>SNX12</i>	0.7	4.5	1.0	1.2	-0.3	1.4	1.1	1.2	0.7	
8 All industries excl admin health education	<i>SN8</i>	-0.6	1.7	1.6	0.8	0.3	2.1	3.0	1.3	0.9	
9 ALL INDUSTRIES	<i>SN9</i>	-0.5	1.6	1.5	0.9	0.3	2.0	2.9	1.2	0.9	

(1) Agriculture input indexes by farm type are based on Farm Expenses Price Index (FEPI) categories, not ANZSIC categories. Output Agriculture indexes by farm type are based on ANZSIC.

(2) Tobacco product manufacturing has been combined with Beverage and malt manufacturing for confidentiality reasons.

(3) The Water supply industry index is not of sufficient quality and a separate index for it is not published.

(4) The series reference has changed, as at the June 2000 quarter, for consistency with series references for other divisions. The composition of this index is unchanged.

(5) Rail transport has been combined with Other transport and storage services for confidentiality reasons.

(6) The official industry group title of Government administration, defence, public order and safety services has been abbreviated to Public administration and defence in this publication.

(7) The series reference PPIQ.SNM01 was published prior to the June 2000 quarter and differs from this series. The series for Government administration, defence, public order and safety service, which includes both central and local government services, is now published with the series reference PPIQ.SNM.

(8) The official sub-industry group title of Central government administration, defence, public order and safety services has been abbreviated to Central government and defence in this publication.

(9) The official sub-industry group title of Local government administration services and civil defence has been abbreviated to Local government and civil defence in this publication.

Producers Price Index: March 2006 quarter

Table 5

Producers Price Index
Outputs – selected industries
 Percentage change from same quarter of previous year

Industry group	Series ref: PPIQ	Quarter									
		2004				2005				2006	
		Mar	Jun	Sep	Dec	Mar	Jun	Sep	Dec	Mar	
A	Agriculture, forestry and fishing	<i>SUA</i>	-2.3	1.6	3.0	1.2	1.6	0.3	0.3	-1.0	-2.7
A02	Livestock and cropping farming	<i>SUA02</i>	-7.6	-1.0	5.9	4.4	6.0	3.1	0.2	-3.9	-7.8
A03	Dairy cattle farming	<i>SUA03</i>	3.2	5.7	0.0	-0.7	-0.4	-0.4	1.7	0.6	-0.2
A04	Other farming	<i>SUA04</i>	-5.2	-2.6	-2.0	-0.5	2.1	1.3	0.9	-0.5	-3.1
A06	Forestry and logging	<i>SUA06</i>	-2.1	2.2	2.2	-7.5	-3.7	-5.3	-2.0	2.4	1.0
B	Mining	<i>SUB</i>	-6.6	13.1	9.0	15.0	14.1	9.9	16.3	18.2	22.4
C	Manufacturing	<i>SUC</i>	-0.3	1.7	3.0	3.5	4.3	3.1	3.9	3.1	2.8
C01	Meat and meat product mfg	<i>SUC01</i>	-5.2	4.2	6.5	1.7	5.4	-2.0	1.1	-3.0	-4.6
C02	Dairy product mfg	<i>SUC02</i>	5.5	4.1	7.0	10.8	11.2	9.6	12.5	8.4	10.1
C03	Other food mfg	<i>SUC03</i>	0.3	0.3	0.0	-0.4	0.4	0.0	0.7	2.4	2.4
C08	Paper and paper product mfg	<i>SUC08</i>	-4.1	-0.2	-1.1	-0.7	-0.2	-4.6	-2.0	0.4	0.1
C09	Printing, publishing and recorded media	<i>SUC09</i>	1.7	0.2	1.5	1.8	2.8	3.8	3.2	3.1	2.1
C10	Petroleum, coal and basic chemical mfg	<i>SUC10</i>	-3.1	1.6	6.3	7.1	3.1	7.1	5.9	8.3	3.7
C13	Basic metal mfg	<i>SUC13</i>	1.1	4.1	5.0	6.5	18.3	11.6	11.3	9.2	-2.1
D	Electricity, gas and water⁽¹⁾	<i>SUD</i>	10.0	-4.7	-13.7	-14.3	-5.3	5.1	18.6	25.8	29.1
D01	Electricity generation and supply	<i>SUD01</i>	10.6	-6.2	-16.6	-17.4	-7.7	4.4	20.5	28.9	33.2
E	Construction⁽²⁾	<i>SUE</i>	4.9	6.4	7.8	7.8	6.9	5.9	5.7	5.8	6.2
F	Wholesale trade⁽²⁾	<i>SUF</i>	-2.3	1.0	1.1	1.7	2.5	2.7	5.2	4.0	5.5
G	Retail trade⁽²⁾	<i>SUG</i>	-0.3	1.2	0.9	1.5	1.4	1.3	2.6	2.2	2.5
H	Accommodation, cafes and restaurants⁽²⁾	<i>SUH</i>	2.9	3.0	3.4	3.6	3.5	3.0	2.7	2.7	2.6
I	Transport and storage	<i>SUI</i>	-0.7	-0.8	0.3	1.8	2.9	2.5	3.6	3.2	4.0
I01	Road transport	<i>SUI01</i>	1.8	1.1	2.5	2.8	3.7	4.4	4.3	5.0	6.1
I04	Air transport	<i>SUI04</i>	-2.9	-2.8	-2.1	0.4	2.2	2.1	4.3	2.4	2.8
J	Communication services⁽²⁾	<i>SUJ</i>	-0.2	-0.9	-1.6	-0.7	-0.9	-0.4	2.3	2.0	2.9
K	Finance and insurance	<i>SUK</i>	4.1	2.2	3.7	4.1	2.5	1.4	-1.0	-0.8	-1.9
K01	Finance	<i>SUK01</i>	3.3	0.8	3.6	3.9	1.5	0.0	-4.1	-2.6	-4.6
L	Property and business services	<i>SUL</i>	3.7	3.9	3.8	3.3	3.1	3.5	3.4	3.2	3.1
L04	Business services	<i>SUL04</i>	3.3	4.0	4.4	3.4	4.0	4.3	3.8	3.6	2.9
P	Cultural and recreational services	<i>SUP</i>	4.1	2.9	3.2	2.8	2.7	3.4	3.4	3.6	3.1
Q	Personal and other services	<i>SUQ</i>	3.9	4.9	4.7	5.0	3.9	3.1	4.5	4.2	4.5
9	ALL INDUSTRIES	<i>SU9</i>	0.9	1.9	2.4	2.6	3.2	3.0	4.1	3.9	4.0

(1) The Water supply industry index is not of sufficient quality and a separate index for it is not published.

(2) The series reference has changed, as at the June 2000 quarter, for consistency with series references for other divisions. The composition of this index is unchanged.

Producers Price Index: March 2006 quarter

Table 6

Producers Price Index
Inputs – selected industries
Percentage change from same quarter of previous year

Industry group	Series ref: PPIQ	Quarter									
		2004				2005				2006	
		Mar	Jun	Sep	Dec	Mar	Jun	Sep	Dec	Mar	
A Agriculture, forestry and fishing	<i>SNA</i>	-1.9	1.3	2.6	3.4	4.5	4.7	6.0	4.9	4.2	
A02 Sheep and beef farming ⁽¹⁾	<i>SNA02</i>	-1.2	1.9	3.6	4.6	5.7	5.8	6.9	5.7	4.0	
A03 Dairy cattle farming	<i>SNA03</i>	-2.7	0.7	1.6	2.6	3.1	5.2	7.0	6.0	6.3	
A04 Cropping and other farming ⁽¹⁾	<i>SNA04</i>	-3.1	1.0	2.3	4.7	7.1	7.2	8.0	4.1	2.1	
A06 Forestry and logging	<i>SNA06</i>	-2.3	0.6	1.0	0.5	1.6	1.4	3.2	3.3	2.8	
B Mining	<i>SNB</i>	-0.9	2.5	2.9	4.0	5.2	3.8	4.5	5.6	6.2	
C Manufacturing	<i>SNC</i>	-1.3	1.6	2.9	3.6	4.1	2.6	2.7	2.3	2.0	
C01 Meat and meat product mfg	<i>SNC01</i>	-6.6	-0.3	8.6	6.2	9.1	6.2	2.7	-1.7	-6.2	
C02 Dairy product mfg	<i>SNC02</i>	6.0	6.8	0.0	0.6	0.6	-0.4	1.8	1.7	1.6	
C03 Other food mfg	<i>SNC03</i>	-1.3	-0.3	0.1	1.3	0.9	2.5	3.4	2.6	3.2	
C08 Paper and paper product mfg	<i>SNC08</i>	-3.3	2.4	4.2	4.9	6.5	-0.3	1.4	2.5	1.7	
C09 Printing, publishing and recorded media	<i>SNC09</i>	-2.8	-1.8	-0.7	1.4	0.8	-0.7	0.9	0.6	1.2	
C10 Petroleum, coal and basic chemical mfg	<i>SNC10</i>	-0.8	2.3	5.1	4.9	8.2	10.7	8.8	9.8	8.7	
C13 Basic metal mfg	<i>SNC13</i>	8.6	11.5	15.5	16.7	8.8	3.8	-2.1	-0.1	2.6	
D Electricity, gas and water⁽²⁾	<i>SND</i>	8.4	-10.7	-22.3	-24.0	-12.5	1.7	21.7	34.9	40.5	
D01 Electricity generation and supply	<i>SND01</i>	9.4	-12.7	-25.7	-27.8	-15.7	0.8	24.7	40.1	46.9	
E Construction⁽³⁾	<i>SNE</i>	0.4	3.5	4.8	6.5	6.4	6.6	7.2	7.2	8.9	
F Wholesale trade⁽³⁾	<i>SNF</i>	-3.7	3.9	6.9	7.7	8.8	10.7	15.3	18.0	17.8	
G Retail trade⁽³⁾	<i>SNG</i>	1.3	1.7	1.5	2.3	2.8	2.5	3.2	3.2	3.3	
H Accommodation, cafes and restaurants⁽³⁾	<i>SNH</i>	2.2	1.9	2.3	2.7	3.0	3.1	2.8	2.6	2.1	
I Transport and storage	<i>SNI</i>	-3.0	3.4	4.9	9.4	6.9	8.2	10.0	9.4	14.7	
I01 Road transport	<i>SNI01</i>	-1.3	1.2	2.4	6.0	6.9	6.5	10.1	9.4	12.5	
I04 Air transport	<i>SNI04</i>	-5.2	6.8	8.8	15.6	8.4	11.4	12.1	11.3	21.1	
J Communication services⁽³⁾	<i>SNJ</i>	0.4	1.9	1.6	2.6	2.4	1.9	3.2	2.6	3.1	
K Finance and insurance	<i>SNK</i>	2.3	2.4	2.3	2.1	2.2	2.3	2.7	2.7	2.9	
K01 Finance	<i>SNK01</i>	2.2	2.3	2.4	1.8	2.2	2.2	2.7	2.9	2.8	
L Property and business services	<i>SNL</i>	1.7	2.2	2.7	3.3	3.1	3.6	3.9	3.9	4.5	
L04 Business services	<i>SNL04</i>	0.5	0.9	1.4	2.3	2.2	2.9	3.2	3.1	3.5	
M Public administration and defence⁽³⁾⁽⁴⁾	<i>SNM</i>	1.9	3.1	3.8	3.9	4.0	3.8	4.1	3.9	3.9	
N Education⁽⁴⁾	<i>SNN</i>	1.5	1.1	1.8	2.0	2.1	2.6	2.7	2.6	2.5	
O Health and community services⁽³⁾	<i>SNO</i>	0.8	0.8	1.5	1.8	1.9	2.9	3.3	3.4	3.4	
P Cultural and recreational services⁽³⁾	<i>SNP</i>	1.2	1.6	2.7	2.6	2.5	3.2	3.2	3.4	3.9	
Q Personal and other services⁽³⁾	<i>SNQ</i>	2.3	3.0	3.5	4.5	3.8	3.4	5.4	5.2	7.0	
8 All industries excl admin health education	<i>SN8</i>	-0.8	1.5	2.6	3.4	4.3	4.7	6.2	6.7	7.4	
9 ALL INDUSTRIES	<i>SN9</i>	-0.6	1.5	2.5	3.4	4.2	4.7	6.1	6.5	7.2	

(1) Agriculture input indexes by farm type are based on Farm Expenses Price Index (FEPI) categories, not ANZSIC categories. Output Agriculture indexes by farm type are based on ANZSIC.

(2) The Water supply industry index is not of sufficient quality and a separate index for it is not published.

(3) The series reference has changed, as at the June 2000 quarter, for consistency with series references for other divisions. The composition of this index is unchanged.

(4) The official industry group title of Government administration, defence, public order and safety services has been abbreviated to Public administration and defence in this publication.

Producers Price Index: March 2006 quarter

Table 7

Producers Price Index
Selected commodities – index numbers and percentage changes
 Base: December 1997 Quarter (=1000)

Selected commodities	Series ref: PPIQ	Quarter								
		2004				2005				2006
		Mar	Jun	Sep	Dec	Mar	Jun	Sep	Dec	Mar
Livestock: sheep and lamb	SC01	1358	1421	1599	1617	1475	1503	1587	1492	1249
Livestock: cattle	SC02	1294	1344	1518	1499	1441	1469	1622	1518	1397
Livestock: deer	SC03	711	709	790	766	729	729	799	731	688
Wool	SC04	988	1098	1062	951	900	896	883	834	851
Logs for domestic market	SC05	990	978	971	918	929	921	910	907	901
Logs for export market	SC06	824	898	806	782	825	858	846	838	887
Processed meat: beef	SC07	1381	1525	1556	1470	1482	1528	1605	1443	1487
Processed meat: sheep and lamb	SC08	1348	1465	1395	1402	1514	1447	1412	1338	1340
Dairy products (excl milk and ice cream)	SC09	1093	1159	1173	1205	1228	1287	1340	1313	1369
Carpet and textile floor coverings	SC10	1299	1299	1299	1316	1278	1281	1273	1280	1289
Pulp	SC11	1003	1197	1095	1001	1015	1017	983	1025	1045
Paper	SC12	1050	1054	1016	1016	1007	999	1004	993	999
Fertiliser	SC13	1074	1035	1037	1039	1136	1157	1182	1184	1216
Ready-mixed concrete	SC14	1100	1119	1122	1136	1203	1212	1224	1224	1256
Framing timber	SC15	1045	1045	1045	1071	1071	1078	1077	1076	1053
Electricity: commercial consumers	SC16	1086	1132	1142	1194	1202	1246	1264	1311	1301
Gas: commercial consumers	SC17	1382	1382	1452	1519	1584	1592	1593	1591	1631
Road freight	SC18	1153	1157	1175	1187	1201	1215	1237	1255	1285
International sea freight	SC19	823	921	866	862	871	919	936	957	950
Finance service charge	SC20	1116	1101	1173	1150	1129	1088	1078	1080	1016
Bank charges	SC21	1315	1312	1303	1325	1328	1327	1331	1363	1376
Commercial rent (excl agricultural land)	SC22	1045	1052	1057	1062	1068	1071	1084	1090	1094
Legal services: personal and corporate	SC23	1234	1253	1255	1281	1348	1358	1357	1361	1373
Accounting services	SC24	1381	1449	1489	1497	1500	1534	1558	1561	1562

Percentage change from previous quarter

Livestock: sheep and lamb	-9.7	4.6	12.5	1.1	-8.8	1.9	5.6	-6.0	-16.3
Livestock: cattle	-5.7	3.9	12.9	-1.3	-3.9	1.9	10.4	-6.4	-8.0
Livestock: deer	-15.8	-0.3	11.4	-3.0	-4.8	0.0	9.6	-8.5	-5.9
Wool	-9.2	11.1	-3.3	-10.5	-5.4	-0.4	-1.5	-5.5	2.0
Logs for domestic market	0.9	-1.2	-0.7	-5.5	1.2	-0.9	-1.2	-0.3	-0.7
Logs for export market	-0.2	9.0	-10.2	-3.0	5.5	4.0	-1.4	-0.9	5.8
Processed meat: beef	0.8	10.4	2.0	-5.5	0.8	3.1	5.0	-10.1	3.0
Processed meat: sheep and lamb	2.5	8.7	-4.8	0.5	8.0	-4.4	-2.4	-5.2	0.1
Dairy products (excl milk and ice cream)	2.1	6.0	1.2	2.7	1.9	4.8	4.1	-2.0	4.3
Carpet and textile floor coverings	3.9	0.0	0.0	1.3	-2.9	0.2	-0.6	0.5	0.7
Pulp	-4.4	19.3	-8.5	-8.6	1.4	0.2	-3.3	4.3	2.0
Paper	1.1	0.4	-3.6	0.0	-0.9	-0.8	0.5	-1.1	0.6
Fertiliser	-4.5	-3.6	0.2	0.2	9.3	1.8	2.2	0.2	2.7
Ready-mixed concrete	0.5	1.7	0.3	1.2	5.9	0.7	1.0	0.0	2.6
Framing timber	0.0	0.0	0.0	2.5	0.0	0.7	-0.1	-0.1	-2.1
Electricity: commercial consumers	1.6	4.2	0.9	4.6	0.7	3.7	1.4	3.7	-0.8
Gas: commercial consumers	8.7	0.0	5.1	4.6	4.3	0.5	0.1	-0.1	2.5
Road freight	0.3	0.3	1.6	1.0	1.2	1.2	1.8	1.5	2.4
International sea freight	-7.3	11.9	-6.0	-0.5	1.0	5.5	1.8	2.2	-0.7
Finance service charge	2.2	-1.3	6.5	-2.0	-1.8	-3.6	-0.9	0.2	-5.9
Bank charges	0.1	-0.2	-0.7	1.7	0.2	-0.1	0.3	2.4	1.0
Commercial rent (excl agricultural land)	0.3	0.7	0.5	0.5	0.6	0.3	1.2	0.6	0.4
Legal services: personal and corporate	0.4	1.5	0.2	2.1	5.2	0.7	-0.1	0.3	0.9
Accounting services	1.8	4.9	2.8	0.5	0.2	2.3	1.6	0.2	0.1

Farm Expenses Price Index: March 2006 quarter

Table 1.01

Farm Expenses Price Index
All farms – index numbers
 Base: December 1992 quarter (=1000)

Input type	Series ref: FPIQ	Quarter									
		2004				2005				2006	
		Mar	Jun	Sep	Dec	Mar	Jun	Sep	Dec	Mar	
Administration	SI9A	1337	1379	1385	1396	1401	1412	1427	1431	1437	
Animal health and breeding	SI9B	1254	1271	1270	1275	1280	1291	1302	1314	1328	
Dairy shed expenses	SI9C	1301	1316	1310	1298	1323	1345	1330	1352	1371	
Electricity	SI9F	1448	1474	1522	1526	1526	1572	1680	1746	1746	
Feed, grazing, cultivation and harvesting	SI9G	1305	1314	1325	1314	1311	1330	1338	1340	1347	
Fertiliser, lime and seeds	SI9H	1030	1039	1034	1035	1051	1072	1092	1089	1109	
Freight	SI9I	950	962	976	993	1008	1013	1040	1068	1084	
Fuel	SI9J	1175	1294	1382	1413	1419	1541	1793	1698	1765	
Insurance premiums	SI9K	1346	1352	1353	1359	1368	1369	1369	1368	1369	
Rent and hire	SI9L	1561	1560	1571	1570	1573	1575	1588	1591	1598	
Repairs, maintenance and motor vehicle repairs	SI9M	1237	1247	1271	1291	1305	1332	1341	1350	1365	
Packaging costs	SI9N	965	978	1001	1004	998	1002	1002	1001	1000	
Shearing	SI9O	1444	1451	1464	1473	1483	1506	1554	1617	1635	
Weed and pest control	SI9Q	1184	1184	1202	1198	1197	1207	1218	1219	1239	
Subtotal excluding livestock	SI9Y	1226	1245	1261	1268	1275	1300	1332	1335	1351	
Livestock purchases	SI9R	1486	1495	1508	1560	1628	1663	1687	1648	1591	
Subtotal including livestock	SI9Z	1266	1284	1300	1314	1330	1356	1387	1384	1388	
Local and central government rates and fees	SI9U	1318	1318	1313	1381	1364	1364	1364	1442	1442	
Interest rates	SI9V	760	777	803	824	835	854	852	866	877	
Wages and salaries	SI9W	1198	1210	1225	1234	1238	1248	1255	1266	1271	
All inputs excluding livestock	SI98	1136	1153	1170	1183	1189	1210	1231	1241	1254	
ALL INPUTS INCLUDING LIVESTOCK	SI99	1173	1190	1207	1223	1236	1258	1280	1284	1290	

Table 1.02

Farm Expenses Price Index
All farms
 Percentage change from previous quarter

Input type	Series ref: FPIQ	Quarter									
		2004				2005				2006	
		Mar	Jun	Sep	Dec	Mar	Jun	Sep	Dec	Mar	
Administration	SI9A	0.7	3.1	0.4	0.8	0.4	0.8	1.1	0.3	0.4	
Animal health and breeding	SI9B	-0.2	1.4	-0.1	0.4	0.4	0.9	0.9	0.9	1.1	
Dairy shed expenses	SI9C	0.5	1.2	-0.5	-0.9	1.9	1.7	-1.1	1.7	1.4	
Electricity	SI9F	-0.1	1.8	3.3	0.3	0.0	3.0	6.9	3.9	0.0	
Feed, grazing, cultivation and harvesting	SI9G	0.1	0.7	0.8	-0.8	-0.2	1.4	0.6	0.1	0.5	
Fertiliser, lime and seeds	SI9H	-1.1	0.9	-0.5	0.1	1.5	2.0	1.9	-0.3	1.8	
Freight	SI9I	0.1	1.3	1.5	1.7	1.5	0.5	2.7	2.7	1.5	
Fuel	SI9J	0.5	10.1	6.8	2.2	0.4	8.6	16.4	-5.3	3.9	
Insurance premiums	SI9K	0.4	0.4	0.1	0.4	0.7	0.1	0.0	-0.1	0.1	
Rent and hire	SI9L	0.1	-0.1	0.7	-0.1	0.2	0.1	0.8	0.2	0.4	
Repairs, maintenance and motor vehicle repairs	SI9M	1.2	0.8	1.9	1.6	1.1	2.1	0.7	0.7	1.1	
Packaging costs	SI9N	-0.1	1.3	2.4	0.3	-0.6	0.4	0.0	-0.1	-0.1	
Shearing	SI9O	0.5	0.5	0.9	0.6	0.7	1.6	3.2	4.1	1.1	
Weed and pest control	SI9Q	-0.1	0.0	1.5	-0.3	-0.1	0.8	0.9	0.1	1.6	
Subtotal excluding livestock	SI9Y	0.2	1.5	1.3	0.6	0.6	2.0	2.5	0.2	1.2	
Livestock purchases	SI9R	0.6	0.6	0.9	3.4	4.4	2.1	1.4	-2.3	-3.5	
Subtotal including livestock	SI9Z	0.3	1.4	1.2	1.1	1.2	2.0	2.3	-0.2	0.3	
Local and central government rates and fees	SI9U	0.0	0.0	-0.4	5.2	-1.2	0.0	0.0	5.7	0.0	
Interest rates	SI9V	1.1	2.2	3.3	2.6	1.3	2.3	-0.2	1.6	1.3	
Wages and salaries	SI9W	0.3	1.0	1.2	0.7	0.3	0.8	0.6	0.9	0.4	
All inputs excluding livestock	SI98	0.4	1.5	1.5	1.1	0.5	1.8	1.7	0.8	1.0	
ALL INPUTS INCLUDING LIVESTOCK	SI99	0.3	1.4	1.4	1.3	1.1	1.8	1.7	0.3	0.5	

Farm Expenses Price Index: March 2006

Table 1.03

Farm Expenses Price Index

All farms

Percentage change from same quarter of the previous year

Input Type	Series ref: FPIQ	2004				2005				2006
		Mar	Jun	Sep	Dec	Mar	Jun	Sep	Dec	Mar
Administration	SI9A	4.0	5.8	4.6	5.1	4.8	2.4	3.0	2.5	2.6
Animal health and breeding	SI9B	1.6	2.3	1.9	1.5	2.1	1.6	2.5	3.1	3.8
Dairy shed expenses	SI9C	1.6	2.1	1.1	0.2	1.7	2.2	1.5	4.2	3.6
Electricity	SI9F	14.9	3.1	6.2	5.2	5.4	6.6	10.4	14.4	14.4
Feed, grazing, cultivation and harvesting	SI9G	-0.2	-0.1	1.4	0.8	0.5	1.2	1.0	2.0	2.7
Fertiliser, lime and seeds	SI9H	-2.3	-1.4	-1.7	-0.6	2.0	3.2	5.6	5.2	5.5
Freight	SI9I	0.7	0.9	2.4	4.6	6.1	5.3	6.6	7.6	7.5
Fuel	SI9J	-9.5	11.8	17.6	20.9	20.8	19.1	29.7	20.2	24.4
Insurance premiums	SI9K	5.2	1.3	1.3	1.3	1.6	1.3	1.2	0.7	0.1
Rent and hire	SI9L	3.0	2.6	0.8	0.7	0.8	1.0	1.1	1.3	1.6
Repairs, maintenance and motor vehicle repairs	SI9M	1.5	3.1	4.5	5.6	5.5	6.8	5.5	4.6	4.6
Packaging costs	SI9N	5.0	3.4	3.8	3.9	3.4	2.5	0.1	-0.3	0.2
Shearing	SI9O	2.0	2.5	3.6	2.5	2.7	3.8	6.1	9.8	10.2
Weed and pest control	SI9Q	-0.2	0.4	1.8	1.1	1.1	1.9	1.3	1.8	3.5
Subtotal excluding livestock	SI9R	-10.9	-2.3	1.1	5.6	9.6	11.2	11.9	5.6	-2.3
Livestock purchases	SI9Y	0.9	2.5	3.3	3.7	4.0	4.4	5.6	5.3	6.0
Subtotal including livestock	SI9Z	-1.6	1.6	2.9	4.1	5.1	5.6	6.7	5.3	4.4
Local and central government rates and fees	SI9U	2.2	2.2	1.9	4.8	3.5	3.5	3.9	4.4	5.7
Interest rates	SI9V	-5.0	-1.4	6.1	9.6	9.9	9.9	6.1	5.1	5.0
Wages and salaries	SI9W	1.7	2.1	2.8	3.4	3.3	3.1	2.4	2.6	2.7
All inputs excluding livestock	SI98	0.3	1.9	3.5	4.5	4.7	4.9	5.2	4.9	5.5
ALL INPUTS EXCLUDING LIVESTOCK	SI99	-1.4	1.4	3.3	4.6	5.4	5.7	6.0	5.0	4.4

Farm Expenses Price Index: March 2006 quarter

Table 2

Farm Expenses Price Index
Sheep and beef farms – index numbers
 Base: December 1992 quarter (=1000)

Input type	Series ref: FPIQ	Quarter									
		2004				2005				2006	
		Mar	Jun	Sep	Dec	Mar	Jun	Sep	Dec	Mar	
Administration	SI3A	1360	1408	1417	1429	1434	1442	1465	1469	1474	
Animal health and breeding	SI3B	1213	1233	1228	1230	1232	1246	1248	1266	1290	
Electricity	SI3F	1390	1415	1461	1465	1465	1509	1612	1676	1676	
Feed, grazing, cultivation and harvesting	SI3G	1387	1403	1416	1397	1391	1419	1412	1414	1430	
Fertiliser, lime and seeds	SI3H	1021	1030	1025	1024	1042	1064	1086	1082	1104	
Freight	SI3I	950	962	976	993	1008	1013	1040	1068	1084	
Fuel	SI3J	1175	1294	1382	1413	1419	1541	1793	1698	1765	
Insurance premiums	SI3K	1316	1332	1330	1336	1362	1361	1362	1361	1362	
Rent and hire	SI3L	1586	1588	1599	1599	1600	1602	1613	1615	1620	
Repairs, maintenance and motor vehicle repairs	SI3M	1237	1247	1271	1291	1305	1332	1341	1350	1365	
Shearing	SI3O	1444	1451	1464	1473	1483	1506	1554	1617	1635	
Weed and pest control	SI3Q	1242	1243	1273	1268	1266	1271	1285	1290	1314	
Subtotal excluding livestock	SI3Y	1245	1268	1285	1294	1303	1331	1369	1376	1396	
Livestock purchases	SI3R	1675	1698	1719	1762	1830	1841	1855	1827	1725	
Subtotal including livestock	SI3Z	1324	1347	1364	1379	1399	1424	1458	1458	1456	
Local and central government rates and fees	SI3U	1322	1322	1318	1400	1383	1383	1383	1469	1469	
Interest rates	SI3V	760	778	803	825	836	853	850	865	876	
Wages and salaries	SI3W	1198	1210	1225	1234	1238	1248	1255	1266	1271	
All inputs excluding livestock	SI38	1146	1166	1183	1198	1206	1229	1254	1266	1282	
ALL INPUTS INCLUDING LIVESTOCK	SI39	1214	1234	1252	1270	1286	1307	1331	1338	1339	

Table 3

Farm Expenses Price Index
Dairy farms – index numbers
 Base: December 1992 quarter (=1000)

Input type	Series ref: FPIQ	Quarter									
		2004				2005				2006	
		Mar	Jun	Sep	Dec	Mar	Jun	Sep	Dec	Mar	
Administration	SI4A	1333	1365	1367	1376	1383	1389	1392	1394	1400	
Animal health and breeding	SI4B	1320	1333	1337	1348	1356	1365	1386	1391	1391	
Dairy shed expenses	SI4C	1301	1316	1310	1298	1323	1345	1330	1352	1371	
Miscellaneous expenses	SI4D	1159	1170	1182	1187	1192	1203	1224	1242	1250	
Electricity	SI4F	1569	1596	1649	1653	1653	1703	1820	1892	1892	
Feed, grazing, cultivation and harvesting	SI4G	1356	1358	1367	1342	1335	1355	1367	1359	1359	
Fertiliser, lime and seeds	SI4H	1021	1030	1025	1024	1042	1064	1086	1082	1104	
Freight	SI4I	950	962	976	993	1008	1013	1040	1068	1084	
Fuel	SI4J	1175	1294	1382	1413	1419	1541	1793	1698	1765	
Insurance premiums	SI4K	1421	1412	1423	1425	1420	1426	1427	1426	1427	
Rent and hire	SI4L	1589	1591	1602	1602	1603	1605	1613	1616	1620	
Repairs, maintenance and motor vehicle repairs	SI4M	1237	1247	1271	1291	1305	1332	1341	1350	1365	
Weed and pest control	SI4Q	1230	1231	1255	1250	1248	1251	1265	1271	1293	
Subtotal excluding livestock	SI4Y	1262	1278	1292	1296	1303	1327	1356	1357	1369	
Livestock purchases	SI4R	1000	978	970	1012	1018	1127	1185	1178	1180	
Subtotal including livestock	SI4Z	1223	1234	1244	1254	1261	1297	1331	1330	1341	
Local and central government rates and fees	SI4U	1306	1306	1301	1344	1328	1328	1328	1378	1378	
Interest rates	SI4V	747	763	787	802	813	832	832	843	854	
Wages and salaries	SI4W	1198	1210	1225	1234	1238	1248	1255	1266	1271	
All inputs excluding livestock	SI48	1122	1137	1153	1161	1168	1189	1207	1213	1224	
ALL INPUTS INCLUDING LIVESTOCK	SI49	1110	1122	1135	1147	1154	1183	1205	1210	1220	

Farm Expenses Price Index: March 2006 quarter

Table 4

Farm Expenses Price Index
Horticultural farms – index numbers
 Base: December 1992 quarter (=1000)

Input type	Series ref: FPIQ	Quarter									
		2004				2005				2006	
		Mar	Jun	Sep	Dec	Mar	Jun	Sep	Dec	Mar	
Administration	SI6A	1279	1319	1322	1328	1332	1355	1364	1369	1377	
Animal health and breeding	SI6B	1213	1233	1228	1230	1232	1246	1248	1266	1290	
Electricity	SI6F	1367	1391	1436	1440	1440	1484	1585	1648	1648	
Feed, grazing, cultivation and harvesting	SI6G	1212	1214	1234	1243	1250	1272	1299	1312	1326	
Fertiliser, lime and seeds	SI6H	1085	1096	1089	1099	1107	1122	1130	1128	1142	
Freight	SI6I	950	962	976	993	1008	1013	1040	1068	1084	
Fuel	SI6J	1175	1294	1382	1413	1419	1541	1793	1698	1765	
Insurance premiums	SI6K	1237	1237	1236	1245	1230	1240	1232	1230	1232	
Rent and hire	SI6L	1498	1491	1498	1497	1503	1506	1525	1532	1541	
Repairs, maintenance and motor vehicle repairs	SI6M	1237	1247	1271	1291	1305	1332	1341	1350	1365	
Packaging costs	SI6N	965	978	1001	1005	999	1003	1002	1002	1001	
Weed and pest control	SI6Q	1105	1103	1106	1103	1105	1121	1128	1124	1139	
Subtotal excluding livestock	SI6Y	1125	1141	1159	1167	1169	1189	1212	1212	1223	
Livestock purchases	SI6R	1477	1487	1504	1568	1653	1686	1707	1650	1621	
Subtotal including livestock	SI6Z	1134	1150	1168	1177	1182	1202	1225	1223	1233	
Local and central government rates and fees	SI6U	1514	1514	1509	1595	1579	1579	1579	1696	1696	
Interest rates	SI6V	774	790	821	841	852	883	882	896	908	
Wages and salaries	SI6W	1198	1210	1225	1234	1238	1248	1255	1266	1271	
All inputs excluding livestock	SI68	1106	1121	1140	1150	1154	1172	1189	1195	1205	
ALL INPUTS INCLUDING LIVESTOCK	SI69	1112	1128	1146	1157	1162	1181	1198	1202	1212	

Table 5

Farm Expenses Price Index
Cropping and other farms – index numbers
 Base: December 1992 quarter (=1000)

Input type	Series ref: FPIQ	Quarter									
		2004				2005				2006	
		Mar	Jun	Sep	Dec	Mar	Jun	Sep	Dec	Mar	
Administration	SI8A	1341	1379	1386	1394	1405	1413	1429	1433	1440	
Animal health and breeding	SI8B	1130	1146	1144	1143	1145	1153	1161	1170	1196	
Electricity	SI8F	1353	1377	1422	1425	1425	1469	1569	1631	1631	
Feed, grazing, cultivation and harvesting	SI8G	1237	1251	1257	1256	1255	1263	1270	1276	1280	
Fertiliser, lime and seeds	SI8H	1021	1030	1025	1024	1042	1064	1086	1082	1104	
Freight	SI8I	950	962	976	993	1008	1013	1040	1068	1084	
Fuel	SI8J	1175	1294	1382	1413	1419	1541	1793	1698	1765	
Insurance premiums	SI8K	1452	1451	1452	1457	1451	1441	1442	1445	1446	
Rent and hire	SI8L	1558	1557	1567	1567	1570	1572	1585	1589	1596	
Repairs, maintenance, motor vehicle repairs	SI8M	1237	1247	1271	1291	1305	1332	1341	1350	1365	
Packaging costs	SI8N	956	966	991	995	989	993	991	991	990	
Shearing	SI8O	1444	1451	1464	1473	1483	1506	1554	1617	1635	
Weed and pest control	SI8Q	1242	1243	1273	1268	1266	1271	1285	1290	1314	
Subtotal excluding livestock	SI8Y	1236	1256	1271	1276	1281	1299	1329	1330	1344	
Livestock purchases	SI8R	1513	1515	1530	1618	1754	1775	1789	1682	1680	
Subtotal including livestock	SI8Z	1303	1319	1334	1360	1396	1415	1441	1416	1425	
Local and central government rates and fees	SI8U	1219	1219	1214	1260	1244	1244	1244	1313	1313	
Interest rates	SI8V	790	808	837	868	879	898	894	911	921	
Wages and salaries	SI8W	1198	1210	1225	1234	1238	1248	1255	1266	1271	
All inputs excluding livestock	SI88	1183	1200	1216	1227	1231	1247	1268	1277	1288	
ALL INPUTS INCLUDING LIVESTOCK	SI89	1245	1259	1275	1300	1329	1346	1366	1353	1362	