

Embargoed until 3:10pm – 19 July 2007

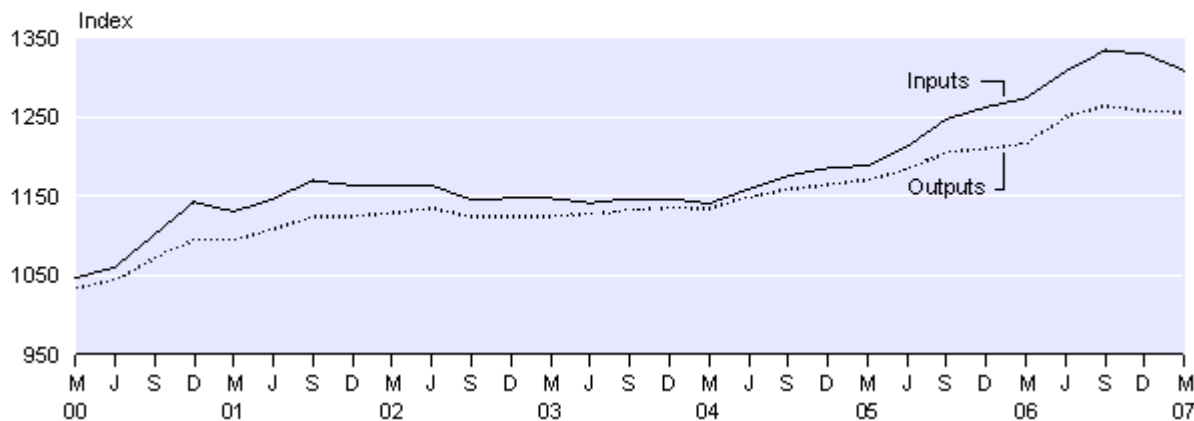
Producers Price Index: March 2007 quarter Revised 19 July 2007 – See attached Erratum

Highlights

- The PPI outputs index fell 0.2 percent in the March 2007 quarter.
- Output prices for livestock and cropping farming fell 11.4 percent in the March 2007 quarter.
- Output prices rose 3.1 percent between the March 2006 and March 2007 quarters.
- The PPI inputs index fell 1.6 percent in the March 2007 quarter.
- Input prices for wholesale trade fell 8.0 percent in the March 2007 quarter.
- Input prices rose 2.7 percent between the March 2006 and March 2007 quarters.

Producers Price Index

All industries – inputs and outputs
Base: December 1997 quarter (=1000)



Dallas Welch (Mrs)
Acting Government Statistician

16 May 2007
Cat 70.906 Set 06/07 – 177

There is a companion Media Release published – *Producers Price Index: March 2007 quarter*.

Commentary

Outputs

Output prices for all industries in the Producers Prices Index (PPI) fell 0.2 percent in the March 2007 quarter, following a fall of 0.5 percent in the December 2006 quarter, and a rise of 1.0 percent in the September 2006 quarter.

Some of the most significant downward contributors to the PPI outputs index in the March 2007 quarter were a fall of 11.4 percent in the livestock and cropping farming index, an 11.5 percent fall in the horticulture and fruit growing index, and a fall of 2.7 percent for the electricity generation and supply index.

The latest fall in livestock and cropping farming prices is the first fall since the March 2006 quarter, when the index fell 9.3 percent. The largest contributor to this fall was lower prices for sheep and lamb.

The horticulture and fruit growing index showed a quarterly fall of 11.5 percent in the March 2007 quarter. This is the first fall in this index since the March 2006 quarter, when a fall of 5.8 percent was recorded. The main reason for the decrease in the index was lower vegetable prices, especially for tomatoes, potatoes and cabbages.

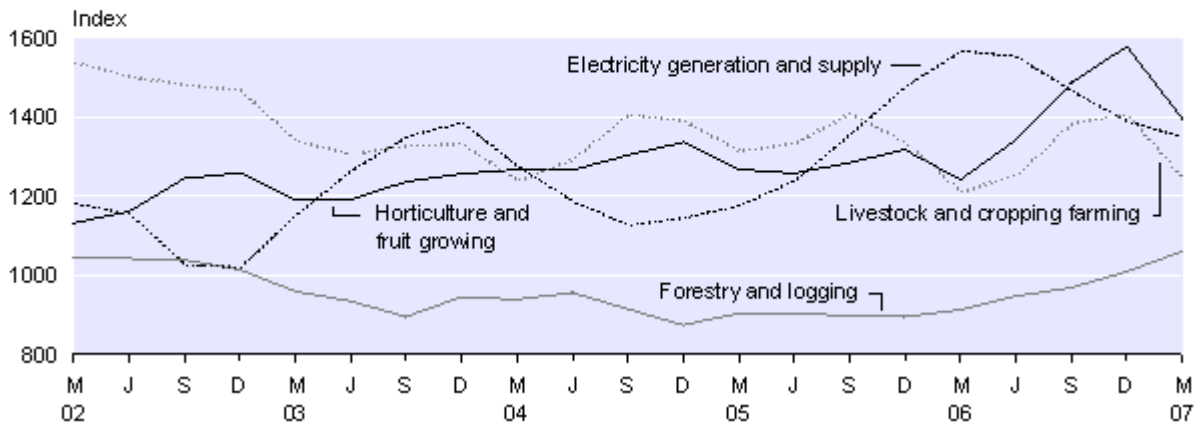
Electricity generation and supply prices fell 2.7 percent in the latest quarter. This index has shown decreases for the past four quarters, with falls of 5.3, 5.6 and 0.9 percent for the December, September and June 2006 quarters, respectively. The main reason for the fall this quarter was lower spot market prices.

Partly offsetting the overall fall in output prices was a rise of 5.1 percent for prices in the forestry and logging industry. The main reason for the rise was an increase in the price of exported log products, due to higher international demand. Forestry and logging output prices rose 16.1 percent from the March 2006 quarter to the March 2007 quarter.

Producers Price Index

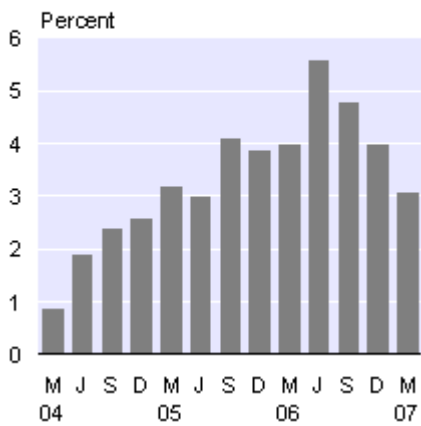
Outputs index – selected industries

Base: December 1997 quarter (=1000)



PPI Outputs

Annual percentage change



Producers Price Index

Outputs – all industries

Quarter	Percentage change from previous quarter	Percentage change from same quarter, previous year
Mar 2005	0.5	3.2
Jun 2005	1.2	3.0
Sep 2005	1.8	4.1
Dec 2005	0.3	3.9
Mar 2006	0.7	4.0
Jun 2006	2.7	5.6
Sep 2006	1.0	4.8
Dec 2006	-0.5	4.0
Mar 2007	-0.2	3.1

Inputs

In the March 2007 quarter, input prices for all industries in the PPI decreased 1.6 percent. This follows a decrease of 0.3 percent in the December 2006 quarter and an increase of 2.0 percent in the September 2006 quarter. The higher New Zealand dollar against its major trading partners' currencies and the falling cost of fuel have been consistent factors behind the decrease in input costs during the March 2007 quarter.

The wholesale trade index fell 8.0 percent in the March 2007 quarter, and made the most significant downward contribution to the PPI inputs index. This is the largest fall since the series began in the June 1994 quarter. The wholesale trade index last fell in the March 2004 quarter (down 0.1 percent), and now the index is 31.5 percent higher than it was in the March 2004 quarter. Lower prices in the mineral, metal and chemical wholesaling sector (attributable to the fall of crude oil prices on the world market and lower domestic natural gas prices) were the main drivers for the decrease this quarter. The appreciation of the New Zealand dollar also helped to push the wholesale trade index down. Annually, the wholesale trade index continued its positive trend, rising 2.7 percent in the year to the March 2007 quarter, following from a rise of 5.3 percent in the year to the December 2006 quarter.

The second-largest downward contributor to the PPI inputs index was a 12.6 percent fall in the meat and meat product manufacturing index. This follows a rise of 1.0 percent in the December 2006 quarter and a 12.6 percent rise in the September 2006 quarter. Lower wholesale prices for lamb and cattle (especially bulls and steers) were the key factors contributing to the negative movement of the index this quarter. The fall in the current quarter is the largest since the series began in the June 1994 quarter.

The air transport index (down 4.4 percent) made the third most significant downward contribution to the PPI inputs index in the March 2007 quarter. Respondents cited decreased prices for various aviation fuels and the appreciating New Zealand dollar as the main reasons for the fall this quarter. Some offsetting effect came from the price increases in travel agency service fees, and labour charge out rates.

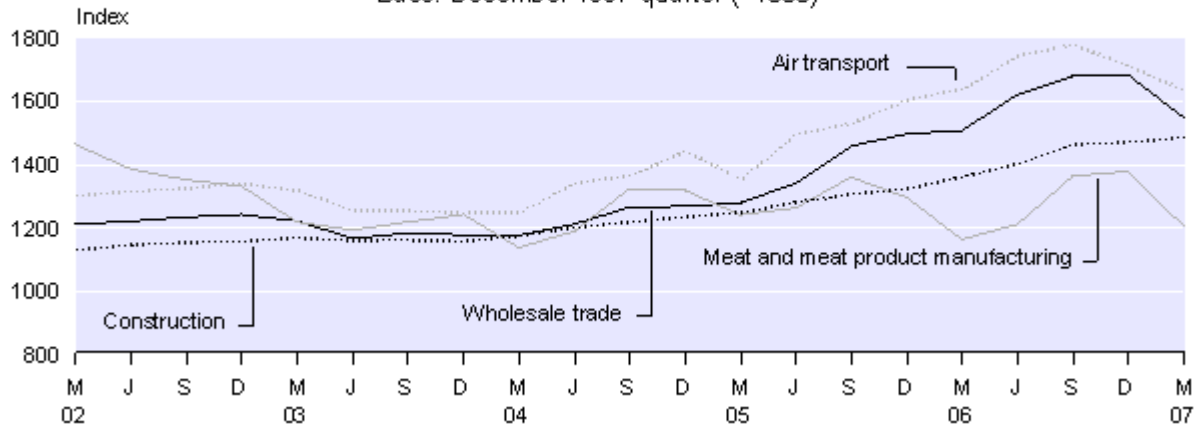
The construction index still showed positive movement, rising 1.1 percent, with a small positive counter to the overall fall of the PPI all inputs index. The increase in the construction index was mainly due to the increase in construction trade services index (due to higher steel pipe prices). Increases in the cost of raw materials also caused the index to rise in the March 2007 quarter.

Input prices increased 2.7 percent in the year to the March 2007 quarter, compared with the 7.2 percent increase during the year to the March 2006 quarter.

Producers Price Index

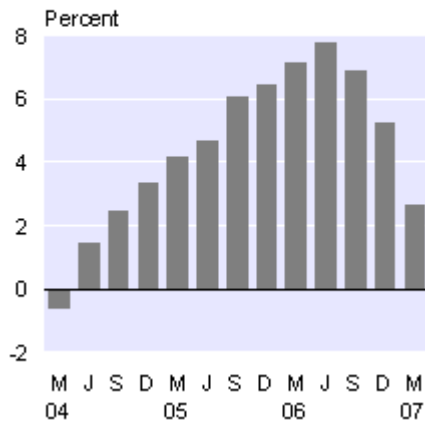
Inputs index – selected industries

Base: December 1997 quarter (=1000)



PPI Inputs

Annual percentage change



Producers Price Index

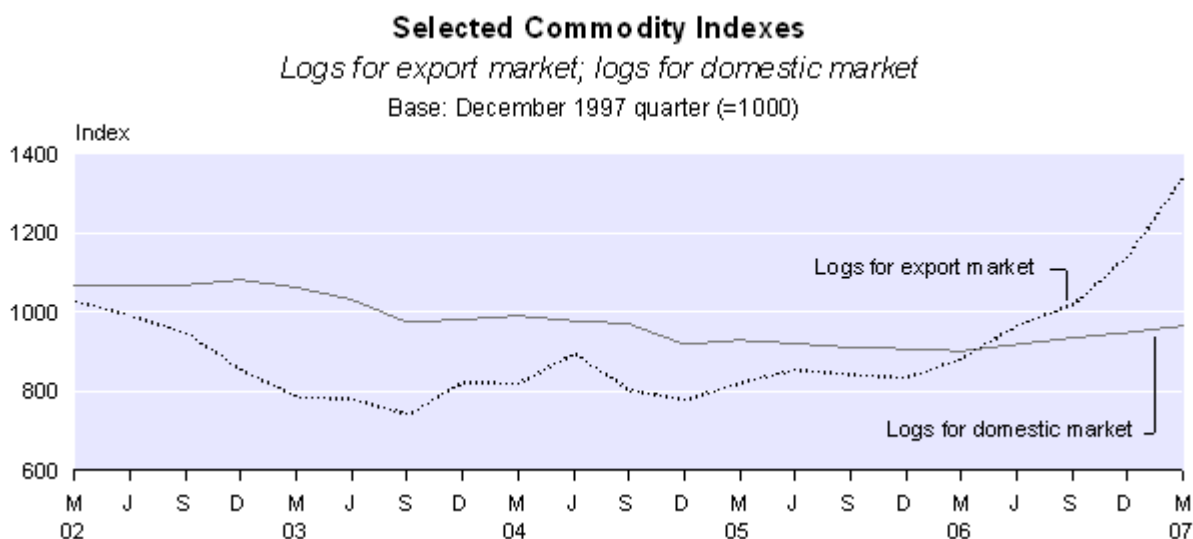
Inputs – all industries

Quarter	Percentage change from previous quarter	Percentage change from same quarter, previous year
Mar 2005	0.3	4.2
Jun 2005	2.0	4.7
Sep 2005	2.9	6.1
Dec 2005	1.2	6.5
Mar 2006	0.9	7.2
Jun 2006	2.7	7.8
Sep 2006	2.0	6.9
Dec 2006	-0.3	5.3
Mar 2007	-1.6	2.7

Commodities

In the March 2007 quarter, the logs for export market index rose 17.1 percent. This follows an increase of 12.4 percent in the December 2006 quarter, and is the largest quarterly rise since the series began in the June 1994 quarter. Due to a strong demand for logs in Asia, there is an international supply shortage, which is driving up prices. In the year to the March 2007 quarter, the logs for export market index rose 51.7 percent.

In comparison, the logs for domestic market index rose 1.8 percent in the March 2007 quarter. This follows similar rises of 1.5 percent and 1.7 percent in the December and September 2006 quarters, respectively. Competition was the main driver of this increase. In the year to the March 2007 quarter, the logs for domestic market index rose 7.1 percent.

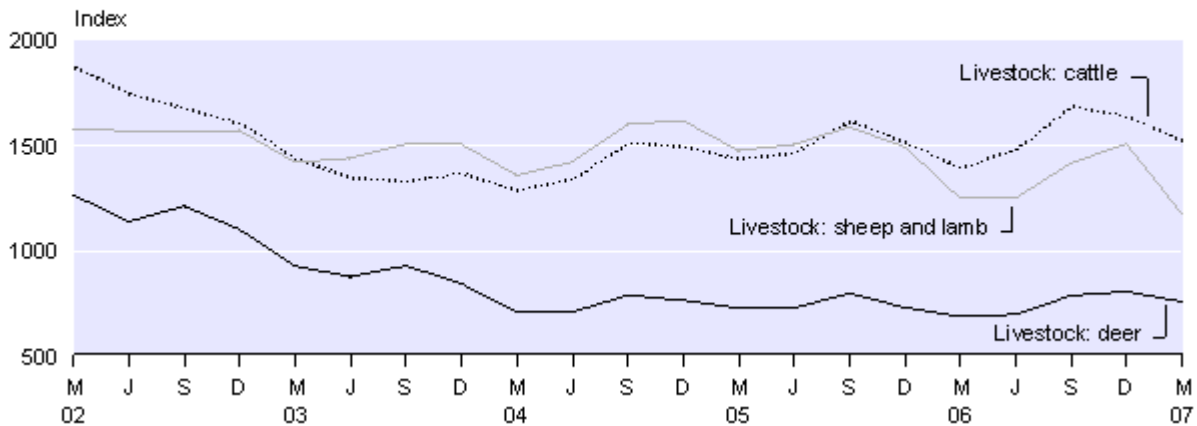


In the March 2007 quarter, the livestock: sheep and lamb index fell 22.0 percent. This is the first quarterly decrease since the March 2006 quarter, and the largest quarterly decrease since the series began in the June 1994 quarter. This fall was influenced by the appreciating New Zealand dollar and softer international markets for lamb. In the year to the March 2007 quarter, the livestock: sheep and lamb index fell 5.8 percent, compared with a fall of 15.3 percent in the year to the March 2006 quarter and a rise of 8.6 percent in the year to the March 2005 quarter.

The livestock: cattle and the livestock: deer indexes also fell in the March 2007 quarter, by 7.1 percent and 5.7 percent, respectively. The fall in the livestock: cattle index follows a fall of 3.0 percent in the December 2006 quarter, and a 13.6 percent rise in the September 2006 quarter. This fall is influenced by decreased wholesale prices for prime beef, partly due to the appreciation of the New Zealand dollar.

The fall in the livestock: deer index is the first since the March 2006 quarter, and is comparable with the falls of 5.9 percent in the March 2006 quarter and 4.8 percent in the March 2005 quarter. This fall in the March 2007 quarter follows rises of 2.3 percent in the December 2006 quarter and 12.7 percent in the September 2006 quarter, which had occurred due to short supply of deer livestock. In the year to the March 2007 quarter, the livestock: deer index rose 10.5 percent.

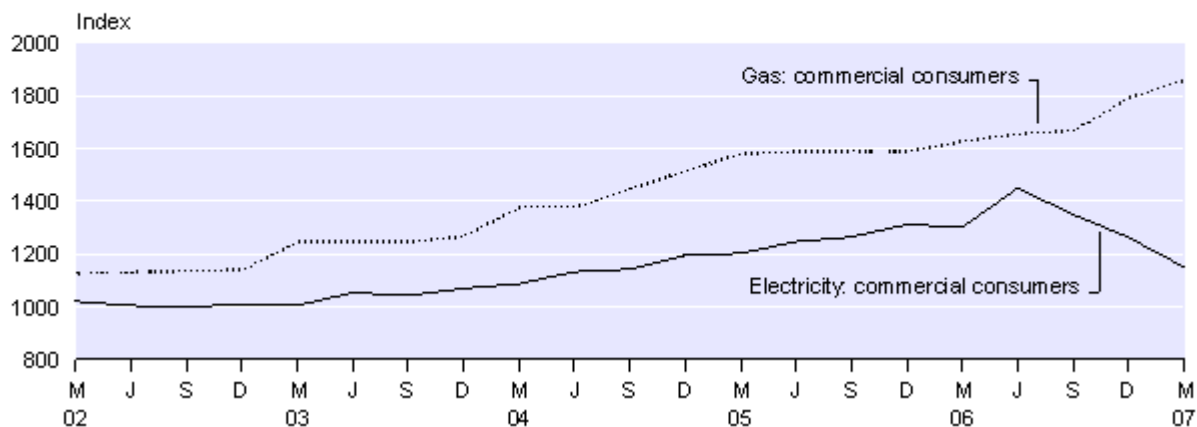
Selected Commodity Indexes
Livestock: sheep and lamb, deer, cattle
 Base: December 1997 quarter (=1000)



The electricity: commercial consumers index fell 8.9 percent in the March 2007 quarter. This is the third consecutive quarter in which this index has fallen, and is the largest quarterly fall since the series began in the June 1994 quarter. The index is now at the same level as the index in the September 2004 quarter. The main reason for this fall was lower spot market prices. In the year to the March 2007 quarter, the electricity: commercial consumers index fell 11.6 percent.

In comparison, the gas: commercial consumers index rose 3.8 percent in the March 2007 quarter. This follows a 7.5 percent rise in the December 2006 quarter, and is the fifth consecutive quarterly increase. The reasons for the rise this quarter were higher spot market prices and a limited supply of gas. In the year to the March 2007 quarter, the gas: commercial consumers index rose 14.3 percent, compared with 3.0 percent in the year to the March 2006 quarter, and 14.6 percent in the year to the March 2005 quarter.

Selected Commodity Indexes
Electricity: commercial consumers; gas: commercial consumers
 Base: December 1997 quarter (=1000)



Impact of exchange rates

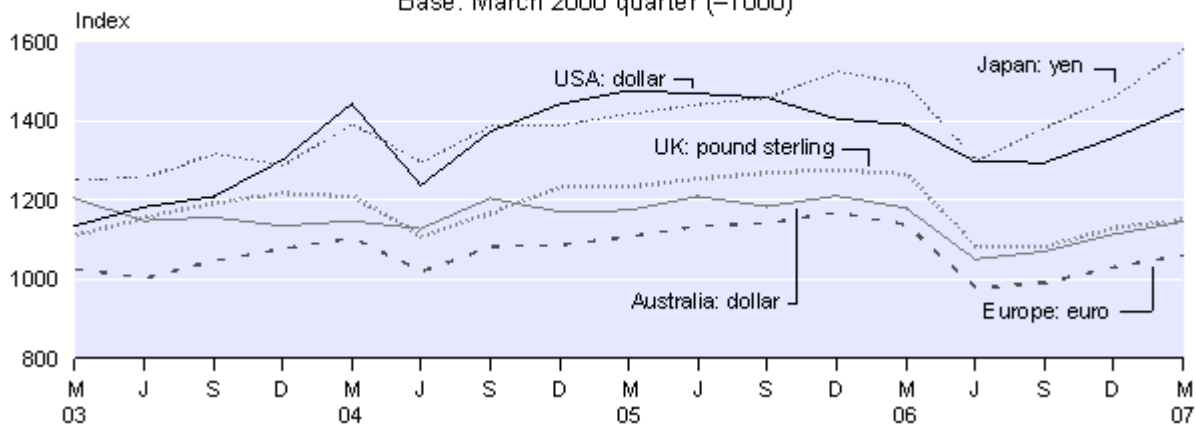
When calculating the PPI, prices collected on the fifteenth day of the middle month in the quarter are generally used to represent the entire quarter. Prices collected for imported goods are often denominated in foreign currencies. These are converted to New Zealand dollars using the exchange rate at the time of pricing.

The New Zealand dollar appreciated against the currencies of the country's five major trading partners in the March 2007 quarter. The table below shows changes in the value of the New Zealand dollar in foreign currency denominations from the December 2006 quarter to the March 2007 quarter.

Exchange Rates
(Published by Westpac Bank)
Bank selling rates for NZ\$1.00

	USA (NZ\$:US\$)	UK (NZ\$:pound sterling)	Australia (NZ\$:AUS\$)	Japan (NZ\$:yen)	Europe (NZ\$:euro)
15 November 2006	0.6539	0.3451	0.8557	76.7081	0.5088
15 February 2007	0.6889	0.3513	0.8803	82.9129	0.5233
Percentage change	5.4	1.8	2.9	8.1	2.8

Producers Price Index
Index of exchange rates
Base: March 2000 quarter (=1000)



Price index developments

Statistics New Zealand is working on a progressive redevelopment of the Producers Price Index. This involves re-evaluation of the items that are priced within the indexes, and also the relative weights that are applied to them. This work began in 2004, and the first of the redeveloped published series took effect in the June 2006 quarter. Further redevelopments are introduced this quarter.

Series references and previous quarters' index numbers will remain unchanged, but the movements recorded from this quarter onwards will include this new data.

At this stage, the redevelopment applies only to output indexes, with redeveloped input indexes to be finalised once all of the output indexes have been redeveloped.

The redevelopment is based on the Annual Enterprise Survey and information obtained from companies involved in the industry.

The following output indexes are affected by redevelopments taking effect in the current quarter. More information can be found in the Technical notes of this release.

ANZIND reference	Description
I01	Road Transport

For further information about these developments, please contact Patricia Jennings on 04 931 4600 or info@stats.govt.nz.

For technical information contact:
Daria Kwon or Mark Gordon
Wellington 04 931 4600
Email: info@stats.govt.nz

Technical notes

Price index interpretation

Price indexes are used to measure the changes in the level of prices, not the actual level of the prices themselves. The Producers Price Index (PPI) measures prices relating to the production sector of the economy. By comparison, the Consumers Price Index measures prices relating to the household sector and the Labour Cost Index measures prices in the labour market.

The PPI is made up of two types of indexes: the outputs index, which measures changes in the prices received by producers; and the inputs index, which measures changes in the cost of production (excluding labour and capital costs). The Farm Expenses Price Index (FEPI) measures price changes specific to the inputs into the farming industry.

PPI outputs index

The outputs index measures changes in prices received by producers.

The outputs index covers the prices of:

- primary products
- manufactured goods
- revenue from renting and leasing
- the provision of services
- capital work undertaken by own employees
- margins on goods purchased for resale.

The outputs index excludes:

- interest and dividends
- royalties and patent fees
- receipts from insurance claims
- government cash grants and subsidies
- goods and services tax (GST) and other indirect taxes.

These indexes are designed to measure price changes at a level corresponding to the prices received before the addition of commodity taxes or deduction of subsidies.

PPI inputs index

The inputs index measures price changes in costs of production, excluding labour and depreciation costs.

The inputs index covers the prices of:

- materials
- fuels and electricity
- transport and communication
- commission and contract services
- rent and lease of land, buildings, vehicles and plant
- business services
- insurance premiums less claims.

The inputs index excludes:

- wages and salaries (measured in the Labour Cost Index)
- capital expenditure/depreciation (measured in the Capital Goods Price Index)
- ACC levies, land tax, government licence fees, road user charges
- rates
- royalties, patent fees
- bad debts and donations.

GST is excluded when measuring input prices for 45 of the 47 industry inputs indexes. The assumption is made that those involved in activities in these industries are 'registered persons, or businesses' that provide 'taxable supply'. GST paid on intermediate consumption is recoverable under the GST credit offset system and therefore is effectively not part of the ultimate input price. Exceptions include the finance and ownership of owner-occupied dwellings indexes, which include some 'GST exempt' and non-recoverable GST activities. Interest costs are excluded because they are regarded as a cost of capital and not as a payment for a good or service.

Government charges are excluded when they are used to raise tax revenue rather than the payment for a good or service purchased from the government. This is consistent with the System of National Accounts.

Farm Expenses Price Index

The Farm Expenses Price Index (FEPI) measures price changes of fixed inputs of goods and services to the farming industry. It does not fully measure changes in the production costs of farming. This is because production costs are not solely dependent on price movements, but are also dependent on factors that affect productivity, such as technological advances, management efficiency and climate fluctuations.

Capital expenditure and depreciation are not covered. (For price indexes of capital expenditure, refer to the Capital Goods Price Index.)

Coverage

The indexes are calculated quarterly from price quotes, which are collected mainly by postal survey. Approximately 13,000 individual commodity items are surveyed from about 3,000 respondents. Prices are generally collected each quarter, according to those prevailing on the fifteenth of the middle month of the quarter being measured. Prices may be obtained monthly or annually, depending on the nature of the item.

Calculation

The PPI and FEPI are Laspeyres base-weighted price index series. The weightings are determined by the relative importance of commodities and businesses within the industry or industry group. Information from various surveys and censuses and other sources is used to determine the weightings. Further information about this is available on request.

Industry classification

The PPI inputs and outputs indexes cover all the major market industry groups as defined by the Australian and New Zealand Standard Industrial Classification 1993 (ANZSIC). Index numbers for industry indexes based on this classification are available from the June 1994 quarter.

The all industries inputs index is made up of 47 industry indexes. Outputs indexes are not available for public administration and defence; education; health and community services;

cultural and recreational services; and personal and other services industries, as reliable estimates of output prices have yet to be developed.

Customised price indexes

Statistics NZ has a large number of unpublished sub-industry and representative commodity price indexes. These indexes are available at a small charge to cover dissemination costs.

Back series of indexes

Statistics NZ will provide tables of the complete back series of the current PPI and FEPI indexes on request.

Price index developments

The following is a detailed analysis of the output indexes affected by redevelopments taking place in the current quarter.

Road transport

The Producers Price Index for the road transport industry has been redeveloped, and takes effect from the March 2007 quarter. The indexes in this publication that are affected by the changes are as follows:

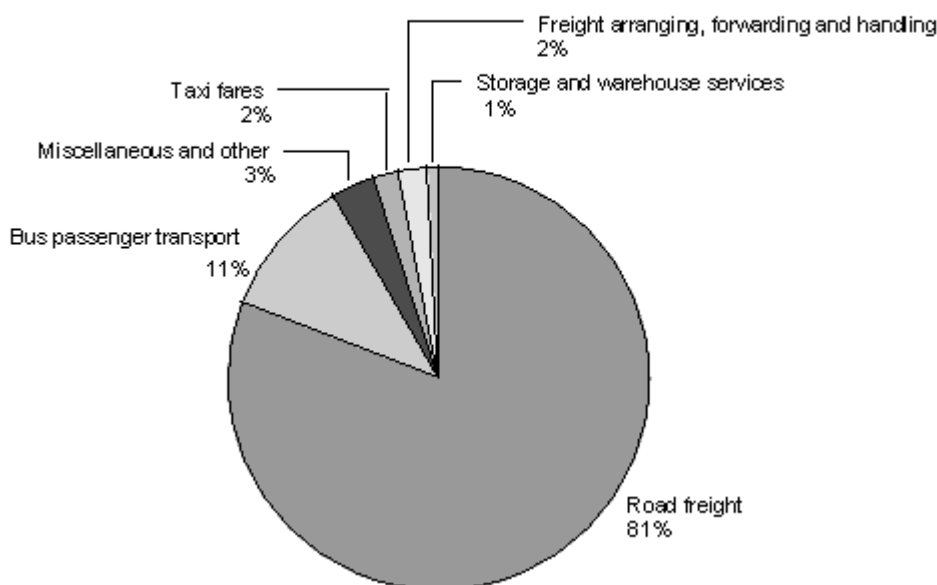
PPIQ.SUI01 Road Transport

PPIQ.SC18 Road Freight Transport

The most significant changes since the industry was last redeveloped in 1997 have been the increase in road freight transport in relation to road passenger transport. This is a result of the reclassification of 2 major industry players from the road freight industry to the services to road freight industry.

Output Commodity Weights for the Road Transport Industry

At 30 December 2006



Note: Percentages may not sum to 100 due to rounding.

Telecommunication services

The redevelopment of the telecommunication services section of the communications industry was to take effect in the March 2007 quarter, but this will be delayed so that further testing can be completed. Full documentation will be available once this testing is done.

For further information on the redevelopment, please contact Patricia Jennings at info@stats.govt.nz, or go to <http://www.stats.govt.nz/developments/business-price-index-redevelopment.htm>.

More information

For more information, follow the [link](#) from the Technical notes of this release on the Statistics New Zealand website.

Copyright

Information obtained from Statistics NZ may be freely used, reproduced, or quoted unless otherwise specified. In all cases Statistics NZ must be acknowledged as the source.

Liability

While care has been used in processing, analysing and extracting information, Statistics NZ gives no warranty that the information supplied is free from error. Statistics NZ shall not be liable for any loss suffered through the use, directly or indirectly, of any information, product or service.

Timing

Timed statistical releases are delivered using postal and electronic services provided by third parties. Delivery of these releases may be delayed by circumstances outside the control of Statistics NZ. Statistics NZ accepts no responsibility for any such delays.

Next release ...

Producers Price Index: June 2007 quarter will be released on 15 August 2007.

Statistics New Zealand: The first source of independent information for your key decisions.

Erratum

Revision to the Producers Price Index

Corrections have been made to the Producers Price Index (PPI) for the March 2007 quarter, December 2006 quarter and the September 2006 quarter. The error was due to incorrect calculation of price movements from the June 2006 quarter to the September 2006 quarter, which occurred while introducing new methodology.

The erratum affects the following indexes:

- PPI all industries outputs index
- electricity, gas and water outputs index
- electricity generation and supply outputs index.

The impact on the PPI all industries outputs index resulted in movements of 4–5 index points for each of the three revised quarters. However, the revision had greater impact on the electricity generation and supply index, and the electricity, gas and water index. The table below summarises the differences between what was originally published and the figures after revision.

Revision to the Producers Price Index				
		Outputs – index numbers Base: December 1997 Quarter (=1000)		
		Electricity, gas and water	Electricity generation and supply	All industries
<i>Series ref: PPIQ</i>		<i>SUD</i>	<i>SUD01</i>	<i>SU9</i>
Previously published figures				
Quarter	Sep 06	1363	1332	1261
	Dec 06	1304	1255	1255
	Mar 07	1270	1216	1252
After revision				
Quarter	Sep 06	1482	1469	1265
	Dec 06	1423	1391	1259
	Mar 07	1390	1353	1257

In the normal course of business, minor revisions are shown as a correction to the index levels in the following quarter. However, since the lower published-level indexes are significantly affected, along with a smaller effect on the published all industries index, this correction has been made promptly.

The PPI input indexes and the Consumers Price Index were not affected by the error in the electricity generation and supply index. The New Zealand Energy Statistics and Gross Domestic Product statistics are also unaffected by the error, due to different methodologies and, in some cases, data sources.

Statistics New Zealand apologises for any disruption this error causes to the wide range of users of the all industries PPI.

The Tables, Highlights and Commentary sections have been changed to reflect these revisions.

Geoff Bascand
Government Statistician

Tables

The following tables can be downloaded from the Statistics New Zealand website in Excel 97 format. If you do not have access to Excel 97 or higher, you may use the [Excel file viewer](#) to view, print and export the contents of the file.

List of tables

Producers Price Index

1. Producers Price Index, outputs – index numbers
2. Producers Price Index, inputs – index numbers
3. Producers Price Index, outputs, percentage change from previous quarter
4. Producers Price Index, inputs, percentage change from previous quarter
5. Producers Price Index, outputs – selected industries
6. Producers Price Index, inputs – selected industries
7. Producers Price Index, selected commodities – index numbers and percentage changes

Farm Expenses Price Index

- 1.01. Farm Expenses Price Index, all farms – index numbers
- 1.02. Farm Expenses Price Index, all farms, percentage change from previous quarter
- 1.03. Farm Expenses Price Index – all farms, percentage change from same quarter of the previous year
2. Farm Expenses Price Index, sheep and beef farms – index numbers
3. Farm Expenses Price Index, dairy farms – index numbers
4. Farm Expenses Price Index, horticultural farms – index numbers
5. Farm Expenses Price Index, cropping and other farms – index numbers

Producers Price Index: March 2007 quarter

Table 1

Producers Price Index
Outputs – index numbers
 Base: December 1997 Quarter (=1000)

Industry group	Series ref: PPIQ	Quarter									
		2005				2006				2007	
		Mar	Jun	Sep	Dec	Mar	Jun	Sep	Dec	Mar	
A	Agriculture, forestry and fishing	<i>SUA</i>	1172	1180	1214	1192	1140	1180	1265	1292	1222
A01	Horticulture and fruit growing	<i>SUA01</i>	1268	1258	1285	1318	1242	1342	1486	1578	1396
A02	Livestock and cropping farming	<i>SUA02</i>	1316	1336	1412	1339	1214	1257	1386	1408	1247
A03	Dairy cattle farming	<i>SUA03</i>	1130	1138	1162	1147	1128	1142	1220	1217	1197
A04	Other farming	<i>SUA04</i>	1108	1107	1116	1122	1074	1088	1151	1188	1173
A05	Services to ag, hunting and trapping	<i>SUA05</i>	1262	1272	1297	1321	1340	1357	1380	1397	1399
A06	Forestry and logging	<i>SUA06</i>	904	905	897	895	913	947	969	1009	1060
A07	Fishing	<i>SUA07</i>	1197	1209	1232	1221	1218	1267	1285	1264	1245
B	Mining	<i>SUB</i>	1441	1547	1606	1729	1764	2049	2040	1915	1784
C	Manufacturing	<i>SUC</i>	1180	1193	1208	1201	1213	1258	1265	1252	1259
C01	Meat and meat product mfg	<i>SUC01</i>	1252	1251	1274	1181	1195	1233	1291	1212	1235
C02	Dairy product mfg	<i>SUC02</i>	1233	1284	1331	1310	1358	1421	1358	1296	1312
C03	Other food mfg	<i>SUC03</i>	1194	1190	1197	1217	1223	1240	1252	1270	1272
C04 C05	Tobacco, beverage and malt mfg ⁽¹⁾	<i>SUC04</i>	1301	1303	1329	1328	1332	1342	1348	1350	1374
C06	Textile and apparel mfg	<i>SUC06</i>	1057	1054	1053	1034	1035	1058	1054	1047	1042
C07	Wood product mfg	<i>SUC07</i>	1042	1062	1064	1079	1096	1113	1122	1117	1117
C08	Paper and paper product mfg	<i>SUC08</i>	1060	1061	1055	1066	1061	1128	1146	1143	1159
C09	Printing, publishing and recorded media	<i>SUC09</i>	1287	1299	1308	1310	1314	1318	1324	1310	1322
C10	Petroleum, coal and basic chemical mfg	<i>SUC10</i>	1215	1247	1296	1335	1260	1476	1426	1341	1317
C11	Rubber plastics and other chemical mfg	<i>SUC11</i>	1152	1165	1170	1159	1165	1170	1189	1213	1210
C12	Non-metallic mineral product mfg	<i>SUC12</i>	1172	1179	1193	1201	1213	1218	1223	1234	1245
C13	Basic metal mfg	<i>SUC13</i>	1248	1205	1213	1199	1222	1305	1339	1371	1412
C14	Sheet and fabricated metal product mfg	<i>SUC14</i>	1129	1163	1189	1196	1203	1203	1267	1311	1311
C15	Transport equipment mfg	<i>SUC15</i>	1113	1123	1125	1120	1138	1197	1210	1182	1179
C16	Machinery and equipment mfg	<i>SUC16</i>	1209	1232	1236	1251	1300	1394	1396	1402	1400
C17	Other manufacturing	<i>SUC17</i>	1155	1169	1171	1175	1183	1195	1210	1206	1216
D	Electricity, gas and water ⁽²⁾	<i>SUD</i>	1209	1262	1365	1474	1561	1551	1482 R	1423 R	1390 R
D01	Electricity generation and supply	<i>SUD01</i>	1179	1242	1360	1480	1570	1556	1469 R	1391 R	1353 R
D02	Gas supply	<i>SUD02</i>	1579	1559	1545	1595	1696	1738	1816	1923	1929
E	Construction ⁽³⁾	<i>SUE</i>	1229	1248	1272	1287	1305	1319	1350	1363	1374
F	Wholesale trade ⁽³⁾	<i>SUF</i>	1174	1195	1230	1219	1238	1307	1315	1298	1299
G	Retail trade ⁽³⁾	<i>SUG</i>	1129	1136	1149	1149	1157	1177	1181	1170	1173
H	Accommodation, cafes and restaurants ⁽³⁾	<i>SUH</i>	1192	1186	1197	1212	1223	1223	1241	1254	1266
I	Transport and storage	<i>SUI</i>	1163	1172	1193	1198	1209	1261	1276	1279	1286
I01	Road transport	<i>SUI01</i>	1179	1190	1207	1227	1251	1273	1289	1294	1312
I03	Water transport	<i>SUI03</i>	1013	1044	1073	1073	1126	1143	1141	1093	1089
I04	Air transport	<i>SUI04</i>	1169	1181	1210	1201	1202	1308	1302	1296	1281
I02 I09	Rail, other transport and storage services ⁽⁴⁾	<i>SUI09</i>	1161	1162	1176	1182	1184	1211	1255	1272	1293
J	Communication services ⁽³⁾	<i>SUJ</i>	886	886	904	906	912	918	923	916	918

For footnotes, see end of table.

Producers Price Index: March 2007 quarter

Table 1
continued

Producers Price Index
Outputs – index numbers
Base: December 1997 Quarter (=1000)

Industry group	Series ref: PPIQ	Quarter									
		2005				2006				2007	
		Mar	Jun	Sep	Dec	Mar	Jun	Sep	Dec	Mar	
K	Finance and insurance	<i>SUK</i>	1210	1198	1199	1205	1187	1191	1192	1177	1168
K01	Finance	<i>SUK01</i>	1187	1162	1158	1168	1132	1136	1136	1101	1077
K02	Insurance	<i>SUK02</i>	1187	1197	1192	1192	1198	1190	1200	1202	1206
K03	Services to finance and insurance	<i>SUK03</i>	1380	1384	1430	1420	1451	1476	1467	1523	1561
L	Property and business services	<i>SUL</i>	1152	1166	1175	1179	1188	1197	1202	1211	1223
L01	Real estate	<i>SUL01</i>	1142	1161	1179	1187	1198	1211	1216	1228	1241
L02	Ownership of owner-occupied dwellings	<i>SUL02</i>	1108	1115	1122	1123	1132	1137	1137	1145	1153
L03	Other property services	<i>SUL03</i>	1059	1043	1048	1070	1078	1073	1086	1114	1130
L04	Business services	<i>SUL04</i>	1204	1223	1228	1233	1239	1252	1260	1267	1281
P	Cultural and recreational services⁽³⁾	<i>SUP</i>	1276	1288	1300	1311	1316	1325	1339	1346	1356
Q	Personal and other services⁽³⁾	<i>SUQ</i>	1213	1221	1250	1256	1268	1270	1294	1297	1309
X01	Agriculture	<i>SUX01</i>	1232	1242	1287	1257	1180	1221	1332	1359	1251
X05	Food, beverages and tobacco	<i>SUX05</i>	1234	1249	1275	1247	1268	1305	1306	1269	1284
X08	Paper, printing and publishing	<i>SUX08</i>	1175	1182	1184	1190	1189	1224	1236	1228	1242
X09	Chemicals, petroleum and plastics	<i>SUX09</i>	1176	1198	1220	1228	1202	1290	1282	1263	1252
X12	Machinery and metal products	<i>SUX12</i>	1169	1194	1206	1216	1245	1299	1326	1341	1340
9	ALL INDUSTRIES	<i>SU9</i>	1172	1186	1207	1211	1219	1252	1265 R	1259 R	1257 R

(1) Tobacco product manufacturing has been combined with Beverage and malt manufacturing for confidentiality reasons.

(2) The Water supply industry index is not of sufficient quality and a separate index for it is not published.

(3) The series reference has changed, as at the June 2000 quarter, for consistency with series references for other divisions. The composition of this index is unchanged.

(4) Rail transport has been combined with Other transport and storage services for confidentiality reasons.

Symbol

R revised

Producers Price Index: March 2007 quarter

Table 2

Producers Price Index
Inputs – index numbers
 Base: December 1997 Quarter (=1000)

Industry group	Series ref: PPIQ	Quarter									
		2005				2006				2007	
		Mar	Jun	Sep	Dec	Mar	Jun	Sep	Dec	Mar	
A	Agriculture, forestry and fishing	<i>SNA</i>	1215	1237	1263	1261	1266	1291	1301	1287	1293
A01	Horticulture and fruit growing	<i>SNA01</i>	1178	1198	1221	1219	1230	1254	1262	1248	1252
A02	Sheep and beef farming ⁽¹⁾	<i>SNA02</i>	1330	1353	1385	1385	1383	1406	1415	1386	1391
A03	Dairy cattle farming	<i>SNA03</i>	1247	1283	1316	1315	1326	1353	1365	1356	1364
A04	Cropping and other farming ⁽¹⁾	<i>SNA04</i>	1242	1259	1282	1260	1268	1275	1282	1270	1281
A05	Services to ag, hunting and trapping	<i>SNA05</i>	1278	1302	1340	1341	1355	1395	1406	1399	1413
A06	Forestry and logging	<i>SNA06</i>	1017	1034	1043	1042	1045	1073	1082	1085	1090
A07	Fishing	<i>SNA07</i>	1129	1137	1167	1162	1177	1218	1236	1221	1225
B	Mining	<i>SNB</i>	1195	1214	1234	1255	1269	1329	1355	1369	1375
C	Manufacturing	<i>SNC</i>	1154	1166	1185	1187	1177	1212	1255	1260	1241
C01	Meat and meat product mfg	<i>SNC01</i>	1240	1263	1359	1295	1163	1211	1363	1377	1204
C02	Dairy product mfg	<i>SNC02</i>	1116	1119	1130	1133	1134	1139	1188	1184	1188
C03	Other food mfg	<i>SNC03</i>	1132	1143	1160	1172	1168	1211	1240	1246	1215
C04 C05	Tobacco, beverage and malt mfg ⁽²⁾	<i>SNC04</i>	1220	1231	1270	1279	1285	1285	1302	1311	1327
C06	Textile and apparel mfg	<i>SNC06</i>	983	991	991	984	979	1012	1025	1037	1030
C07	Wood product mfg	<i>SNC07</i>	1023	1028	1030	1037	1043	1065	1081	1086	1086
C08	Paper and paper product mfg	<i>SNC08</i>	1139	1149	1155	1164	1158	1213	1232	1230	1224
C09	Printing, publishing and recorded media	<i>SNC09</i>	1137	1132	1142	1145	1151	1168	1205	1205	1202
C10	Petroleum, coal and basic chemical mfg	<i>SNC10</i>	1274	1326	1331	1353	1385	1409	1457	1464	1457
C11	Rubber plastics and other chemical mfg	<i>SNC11</i>	1176	1190	1198	1200	1212	1229	1253	1255	1255
C12	Non-metallic mineral product mfg	<i>SNC12</i>	1210	1221	1240	1251	1269	1299	1309	1301	1306
C13	Basic metal mfg	<i>SNC13</i>	1320	1294	1281	1337	1354	1497	1478	1466	1492
C14	Sheet and fabricated metal product mfg	<i>SNC14</i>	1141	1172	1198	1214	1214	1295	1322	1333	1340
C15	Transport equipment mfg	<i>SNC15</i>	1121	1128	1134	1145	1147	1163	1171	1170	1167
C16	Machinery and equipment mfg	<i>SNC16</i>	1206	1213	1220	1236	1253	1294	1359	1375	1407
C17	Other manufacturing	<i>SNC17</i>	1130	1140	1150	1159	1169	1197	1206	1209	1217
D	Electricity, gas and water⁽³⁾	<i>SND</i>	1142	1202	1344	1481	1604	1469	1306	1175	1165
D01	Electricity generation and supply	<i>SND01</i>	1124	1196	1364	1517	1651	1478	1283	1137	1129
D02	Gas supply	<i>SND02</i>	1304	1270	1250	1333	1440	1570	1583	1473	1446
E	Construction⁽⁴⁾	<i>SNE</i>	1253	1285	1310	1327	1364	1407	1467	1473	1489
F	Wholesale trade⁽⁴⁾	<i>SNF</i>	1279	1340	1458	1496	1507	1620	1678	1682	1547
G	Retail trade⁽⁴⁾	<i>SNG</i>	1162	1170	1184	1196	1200	1221	1232	1233	1231
H	Accommodation, cafes and restaurants⁽⁴⁾	<i>SNH</i>	1175	1182	1196	1204	1200	1222	1236	1253	1242
I	Transport and storage	<i>SNI</i>	1269	1340	1377	1420	1456	1526	1561	1520	1488
I01	Road transport	<i>SNI01</i>	1262	1292	1343	1368	1420	1484	1544	1507	1502
I03	Water transport	<i>SNI03</i>	1121	1144	1183	1208	1227	1257	1253	1238	1241
I04	Air transport	<i>SNI04</i>	1357	1499	1535	1608	1643	1747	1782	1713	1637
I02 I09	Rail, other transport and storage services ⁽⁵⁾	<i>SNI09</i>	1158	1166	1188	1205	1228	1252	1265	1261	1264
J	Communication services⁽⁴⁾	<i>SNJ</i>	1030	1037	1046	1049	1062	1084	1101	1093	1094

For footnotes, see end of table.

Producers Price Index: March 2007 quarter

Table 2
continued

Producers Price Index
Inputs – index numbers
Base: December 1997 Quarter (=1000)

Industry group	Series ref: PPIQ	Quarter									
		2005				2006				2007	
		Mar	Jun	Sep	Dec	Mar	Jun	Sep	Dec	Mar	
K Finance and insurance	<i>SNK</i>	1160	1168	1178	1185	1194	1211	1218	1223	1228	
K01 Finance	<i>SNK01</i>	1156	1162	1173	1181	1188	1207	1213	1220	1224	
K02 Insurance	<i>SNK02</i>	1165	1175	1182	1189	1200	1209	1216	1218	1224	
K03 Services to finance and insurance	<i>SNK03</i>	1167	1177	1189	1196	1209	1233	1245	1248	1256	
L Property and business services	<i>SNL</i>	1181	1198	1211	1221	1234	1249	1264	1270	1277	
L01 Real estate	<i>SNL01</i>	1232	1261	1281	1291	1309	1327	1340	1345	1360	
L02 Ownership of owner-occupied dwellings	<i>SNL02</i>	1202	1213	1239	1250	1268	1283	1320	1333	1343	
L03 Other property services	<i>SNL03</i>	1198	1215	1228	1242	1259	1283	1304	1307	1306	
L04 Business services	<i>SNL04</i>	1156	1170	1178	1187	1196	1209	1218	1222	1225	
M Public administration and defence⁽⁴⁾⁽⁶⁾	<i>SNM</i>	1180	1192	1207	1215	1226	1245	1255	1253	1256	
M01 Central government and defence ⁽⁷⁾⁽⁸⁾	<i>SNM01</i>	1162	1172	1186	1194	1202	1217	1225	1226	1229	
M02 Local government and civil defence ⁽⁹⁾	<i>SNM02</i>	1203	1219	1234	1243	1257	1281	1294	1289	1292	
N Education⁽⁴⁾	<i>SNN</i>	1140	1149	1158	1163	1169	1181	1188	1192	1197	
O Health and community services⁽⁴⁾	<i>SNO</i>	1134	1150	1160	1167	1173	1191	1197	1201	1204	
P Cultural and recreational services⁽⁴⁾	<i>SNP</i>	1158	1175	1184	1193	1203	1216	1225	1228	1234	
Q Personal and other services⁽⁴⁾	<i>SNQ</i>	1222	1232	1266	1276	1307	1327	1354	1358	1348	
X01 Agriculture	<i>SNX01</i>	1274	1299	1330	1326	1331	1353	1362	1343	1349	
X05 Food, beverage and tobacco	<i>SNX05</i>	1165	1177	1216	1203	1165	1193	1263	1268	1213	
X08 Paper, printing and publishing	<i>SNX08</i>	1138	1141	1149	1155	1155	1192	1219	1218	1213	
X09 Chemicals, petroleum and plastics	<i>SNX09</i>	1214	1244	1250	1260	1280	1300	1333	1337	1334	
X12 Machinery and metal products	<i>SNX12</i>	1175	1191	1204	1219	1228	1279	1323	1334	1352	
8 All industries excl admin health education	<i>SN8</i>	1190	1215	1251	1267	1278	1313	1341	1336	1314	
9 ALL INDUSTRIES	<i>SN9</i>	1188	1212	1247	1262	1273	1307	1333	1329	1308	

- (1) Agriculture input indexes by farm type are based on Farm Expenses Price Index (FEPI) categories, not ANZSIC categories. Output Agriculture indexes by farm type are based on ANZSIC.
- (2) Tobacco product manufacturing has been combined with Beverage and malt manufacturing for confidentiality reasons.
- (3) The Water supply industry index is not of sufficient quality and a separate index for it is not published.
- (4) The series reference has changed, as at the June 2000 quarter, for consistency with series references for other divisions. The composition of this index is unchanged.
- (5) Rail transport has been combined with Other transport and storage services for confidentiality reasons.
- (6) The official industry group title of Government administration, defence, public order and safety services has been abbreviated to Public administration and defence in this publication.
- (7) The series reference PPIQ.SNM01 was published prior to the June 2000 quarter and differs from this series. The series for Government administration, defence, public order and safety service, which includes both central and local government services, is now published with the series reference PPIQ.SNM.
- (8) The official sub-industry group title of Central government administration, defence, public order and safety services has been abbreviated to Central government and defence in this publication.
- (9) The official sub-industry group title of Local government administration services and civil defence has been abbreviated to Local government and civil defence in this publication.

Producers Price Index: March 2007 quarter

Table 3

Producers Price Index
Outputs
Percentage change from previous quarter

Industry group	Series ref: PPIQ	Quarter									
		2005				2006				2007	
		Mar	Jun	Sep	Dec	Mar	Jun	Sep	Dec	Mar	
A	Agriculture, forestry and fishing	<i>SUA</i>	-2.7	0.7	2.9	-1.8	-4.4	3.5	7.2	2.1	-5.4
A01	Horticulture and fruit growing	<i>SUA01</i>	-5.1	-0.8	2.1	2.6	-5.8	8.1	10.7	6.2	-11.5
A02	Livestock and cropping farming	<i>SUA02</i>	-5.6	1.5	5.7	-5.2	-9.3	3.5	10.3	1.6	-11.4
A03	Dairy cattle farming	<i>SUA03</i>	-0.9	0.7	2.1	-1.3	-1.7	1.2	6.8	-0.2	-1.6
A04	Other farming	<i>SUA04</i>	-1.8	-0.1	0.8	0.5	-4.3	1.3	5.8	3.2	-1.3
A05	Services to ag, hunting and trapping	<i>SUA05</i>	0.4	0.8	2.0	1.9	1.4	1.3	1.7	1.2	0.1
A06	Forestry and logging	<i>SUA06</i>	3.4	0.1	-0.9	-0.2	2.0	3.7	2.3	4.1	5.1
A07	Fishing	<i>SUA07</i>	-1.6	1.0	1.9	-0.9	-0.2	4.0	1.4	-1.6	-1.5
B	Mining	<i>SUB</i>	-1.5	7.4	3.8	7.7	2.0	16.2	-0.4	-6.1	-6.8
C	Manufacturing	<i>SUC</i>	1.3	1.1	1.3	-0.6	1.0	3.7	0.6	-1.0	0.6
C01	Meat and meat product mfg	<i>SUC01</i>	2.8	-0.1	1.8	-7.3	1.2	3.2	4.7	-6.1	1.9
C02	Dairy product mfg	<i>SUC02</i>	2.1	4.1	3.7	-1.6	3.7	4.6	-4.4	-4.6	1.2
C03	Other food mfg	<i>SUC03</i>	0.5	-0.3	0.6	1.7	0.5	1.4	1.0	1.4	0.2
C04 C05	Tobacco, beverage and malt mfg ⁽¹⁾	<i>SUC04</i>	1.1	0.2	2.0	-0.1	0.3	0.8	0.4	0.1	1.8
C06	Textile and apparel mfg	<i>SUC06</i>	-1.0	-0.3	-0.1	-1.8	0.1	2.2	-0.4	-0.7	-0.5
C07	Wood product mfg	<i>SUC07</i>	0.1	1.9	0.2	1.4	1.6	1.6	0.8	-0.4	0.0
C08	Paper and paper product mfg	<i>SUC08</i>	-0.2	0.1	-0.6	1.0	-0.5	6.3	1.6	-0.3	1.4
C09	Printing, publishing and recorded media	<i>SUC09</i>	1.3	0.9	0.7	0.2	0.3	0.3	0.5	-1.1	0.9
C10	Petroleum, coal and basic chemical mfg	<i>SUC10</i>	-1.5	2.6	3.9	3.0	-5.6	17.1	-3.4	-6.0	-1.8
C11	Rubber plastics and other chemical mfg	<i>SUC11</i>	0.8	1.1	0.4	-0.9	0.5	0.4	1.6	2.0	-0.2
C12	Non-metallic mineral product mfg	<i>SUC12</i>	3.4	0.6	1.2	0.7	1.0	0.4	0.4	0.9	0.9
C13	Basic metal mfg	<i>SUC13</i>	13.7	-3.4	0.7	-1.2	1.9	6.8	2.6	2.4	3.0
C14	Sheet and fabricated metal product mfg	<i>SUC14</i>	1.3	3.0	2.2	0.6	0.6	0.0	5.3	3.5	0.0
C15	Transport equipment mfg	<i>SUC15</i>	0.6	0.9	0.2	-0.4	1.6	5.2	1.1	-2.3	-0.3
C16	Machinery and equipment mfg	<i>SUC16</i>	-0.1	1.9	0.3	1.2	3.9	7.2	0.1	0.4	-0.1
C17	Other manufacturing	<i>SUC17</i>	0.5	1.2	0.2	0.3	0.7	1.0	1.3	-0.3	0.8
D	Electricity, gas and water⁽²⁾	<i>SUD</i>	3.2	4.4	8.2	8.0	5.9	-0.6	-4.4 R	-4.0 R	-2.3 R
D01	Electricity generation and supply	<i>SUD01</i>	2.7	5.3	9.5	8.8	6.1	-0.9	-5.6 R	-5.3 R	-2.7 R
D02	Gas supply	<i>SUD02</i>	8.4	-1.3	-0.9	3.2	6.3	2.5	4.5	5.9	0.3
E	Construction⁽³⁾	<i>SUE</i>	1.1	1.5	1.9	1.2	1.4	1.1	2.4	1.0	0.8
F	Wholesale trade⁽³⁾	<i>SUF</i>	0.2	1.8	2.9	-0.9	1.6	5.6	0.6	-1.3	0.1
G	Retail trade⁽³⁾	<i>SUG</i>	0.4	0.6	1.1	0.0	0.7	1.7	0.3	-0.9	0.3
H	Accommodation, cafes and restaurants⁽³⁾	<i>SUH</i>	1.0	-0.5	0.9	1.3	0.9	0.0	1.5	1.0	1.0
I	Transport and storage	<i>SUI</i>	0.2	0.8	1.8	0.4	0.9	4.3	1.2	0.2	0.5
I01	Road transport	<i>SUI01</i>	0.9	0.9	1.4	1.7	2.0	1.8	1.3	0.4	1.4
I03	Water transport	<i>SUI03</i>	0.4	3.1	2.8	0.0	4.9	1.5	-0.2	-4.2	-0.4
I04	Air transport	<i>SUI04</i>	-0.3	1.0	2.5	-0.7	0.1	8.8	-0.5	-0.5	-1.2
I02 I09	Rail, other transport and storage services ⁽⁴⁾	<i>SUI09</i>	-0.1	0.1	1.2	0.5	0.2	2.3	3.6	1.4	1.7
J	Communication services⁽³⁾	<i>SUJ</i>	-0.2	0.0	2.0	0.2	0.7	0.7	0.5	-0.8	0.2

For footnotes, see end of table.

Producers Price Index: March 2007 quarter

Table 3
continued

Producers Price Index
Outputs
Percentage change from previous quarter

Industry group	Series ref: PPIQ	Quarter									
		2005				2006				2007	
		Mar	Jun	Sep	Dec	Mar	Jun	Sep	Dec	Mar	
K	Finance and insurance	<i>SUK</i>	-0.4	-1.0	0.1	0.5	-1.5	0.3	0.1	-1.3	-0.8
K01	Finance	<i>SUK01</i>	-1.0	-2.1	-0.3	0.9	-3.1	0.4	0.0	-3.1	-2.2
K02	Insurance	<i>SUK02</i>	-0.3	0.8	-0.4	0.0	0.5	-0.7	0.8	0.2	0.3
K03	Services to finance and insurance	<i>SUK03</i>	1.7	0.3	3.3	-0.7	2.2	1.7	-0.6	3.8	2.5
L	Property and business services	<i>SUL</i>	0.9	1.2	0.8	0.3	0.8	0.8	0.4	0.7	1.0
L01	Real estate	<i>SUL01</i>	1.1	1.7	1.6	0.7	0.9	1.1	0.4	1.0	1.1
L02	Ownership of owner-occupied dwellings	<i>SUL02</i>	0.4	0.6	0.6	0.1	0.8	0.4	0.0	0.7	0.7
L03	Other property services	<i>SUL03</i>	2.1	-1.5	0.5	2.1	0.7	-0.5	1.2	2.6	1.4
L04	Business services	<i>SUL04</i>	1.2	1.6	0.4	0.4	0.5	1.0	0.6	0.6	1.1
P	Cultural and recreational services⁽³⁾	<i>SUP</i>	0.8	0.9	0.9	0.8	0.4	0.7	1.1	0.5	0.7
Q	Personal and other services⁽³⁾	<i>SUQ</i>	0.7	0.7	2.4	0.5	1.0	0.2	1.9	0.2	0.9
X01	Agriculture	<i>SUX01</i>	-4.0	0.8	3.6	-2.3	-6.1	3.5	9.1	2.0	-7.9
X05	Food, beverages and tobacco	<i>SUX05</i>	1.7	1.2	2.1	-2.2	1.7	2.9	0.1	-2.8	1.2
X08	Paper, printing and publishing	<i>SUX08</i>	0.6	0.6	0.2	0.5	-0.1	2.9	1.0	-0.6	1.1
X09	Chemicals, petroleum and plastics	<i>SUX09</i>	-0.2	1.9	1.8	0.7	-2.1	7.3	-0.6	-1.5	-0.9
X12	Machinery and metal products	<i>SUX12</i>	0.5	2.1	1.0	0.8	2.4	4.3	2.1	1.1	-0.1
9	ALL INDUSTRIES	<i>SU9</i>	0.5	1.2	1.8	0.3	0.7	2.7	1.0 R	-0.5 R	-0.2 R

(1) Tobacco product manufacturing has been combined with Beverage and malt manufacturing for confidentiality reasons.

(2) The Water supply industry index is not of sufficient quality and a separate index for it is not published.

(3) The series reference has changed, as at the June 2000 quarter, for consistency with series references for other divisions. The composition of this index is unchanged.

(4) Rail transport has been combined with Other transport and storage services for confidentiality reasons.

Symbol

R revised

Producers Price Index: March 2007 quarter

Table 4

Producers Price Index
Inputs
Percentage change from previous quarter

Industry group	Series ref: PPIQ	Quarter									
		2005				2006				2007	
		Mar	Jun	Sep	Dec	Mar	Jun	Sep	Dec	Mar	
A	Agriculture, forestry and fishing	<i>SNA</i>	1.1	1.8	2.1	-0.2	0.4	2.0	0.8	-1.1	0.5
A01	Horticulture and fruit growing	<i>SNA01</i>	0.4	1.7	1.9	-0.2	0.9	2.0	0.6	-1.1	0.3
A02	Sheep and beef farming ⁽¹⁾	<i>SNA02</i>	1.5	1.7	2.4	0.0	-0.1	1.7	0.6	-2.0	0.4
A03	Dairy cattle farming	<i>SNA03</i>	0.6	2.9	2.6	-0.1	0.8	2.0	0.9	-0.7	0.6
A04	Cropping and other farming ⁽¹⁾	<i>SNA04</i>	2.6	1.4	1.8	-1.7	0.6	0.6	0.5	-0.9	0.9
A05	Services to ag, hunting and trapping	<i>SNA05</i>	0.6	1.9	2.9	0.1	1.0	3.0	0.8	-0.5	1.0
A06	Forestry and logging	<i>SNA06</i>	0.8	1.7	0.9	-0.1	0.3	2.7	0.8	0.3	0.5
A07	Fishing	<i>SNA07</i>	-1.0	0.7	2.6	-0.4	1.3	3.5	1.5	-1.2	0.3
B	Mining	<i>SNB</i>	0.6	1.6	1.6	1.7	1.1	4.7	2.0	1.0	0.4
C	Manufacturing	<i>SNC</i>	-0.5	1.0	1.6	0.2	-0.8	3.0	3.5	0.4	-1.5
C01	Meat and meat product mfg	<i>SNC01</i>	-5.9	1.9	7.6	-4.7	-10.2	4.1	12.6	1.0	-12.6
C02	Dairy product mfg	<i>SNC02</i>	0.2	0.3	1.0	0.3	0.1	0.4	4.3	-0.3	0.3
C03	Other food mfg	<i>SNC03</i>	-0.9	1.0	1.5	1.0	-0.3	3.7	2.4	0.5	-2.5
C04 C05	Tobacco, beverage and malt mfg ⁽²⁾	<i>SNC04</i>	1.3	0.9	3.2	0.7	0.5	0.0	1.3	0.7	1.2
C06	Textile and apparel mfg	<i>SNC06</i>	-1.6	0.8	0.0	-0.7	-0.5	3.4	1.3	1.2	-0.7
C07	Wood product mfg	<i>SNC07</i>	1.0	0.5	0.2	0.7	0.6	2.1	1.5	0.5	0.0
C08	Paper and paper product mfg	<i>SNC08</i>	0.3	0.9	0.5	0.8	-0.5	4.7	1.6	-0.2	-0.5
C09	Printing, publishing and recorded media	<i>SNC09</i>	-0.1	-0.4	0.9	0.3	0.5	1.5	3.2	0.0	-0.2
C10	Petroleum, coal and basic chemical mfg	<i>SNC10</i>	3.4	4.1	0.4	1.7	2.4	1.7	3.4	0.5	-0.5
C11	Rubber plastics and other chemical mfg	<i>SNC11</i>	2.2	1.2	0.7	0.2	1.0	1.4	2.0	0.2	0.0
C12	Non-metallic mineral product mfg	<i>SNC12</i>	1.9	0.9	1.6	0.9	1.4	2.4	0.8	-0.6	0.4
C13	Basic metal mfg	<i>SNC13</i>	-1.3	-2.0	-1.0	4.4	1.3	10.6	-1.3	-0.8	1.8
C14	Sheet and fabricated metal product mfg	<i>SNC14</i>	-1.0	2.7	2.2	1.3	0.0	6.7	2.1	0.8	0.5
C15	Transport equipment mfg	<i>SNC15</i>	0.0	0.6	0.5	1.0	0.2	1.4	0.7	-0.1	-0.3
C16	Machinery and equipment mfg	<i>SNC16</i>	0.2	0.6	0.6	1.3	1.4	3.3	5.0	1.2	2.3
C17	Other manufacturing	<i>SNC17</i>	0.4	0.9	0.9	0.8	0.9	2.4	0.8	0.2	0.7
D	Electricity, gas and water⁽³⁾	<i>SND</i>	4.0	5.3	11.8	10.2	8.3	-8.4	-11.1	-10.0	-0.9
D01	Electricity generation and supply	<i>SND01</i>	3.8	6.4	14.0	11.2	8.8	-10.5	-13.2	-11.4	-0.7
D02	Gas supply	<i>SND02</i>	9.6	-2.6	-1.6	6.6	8.0	9.0	0.8	-6.9	-1.8
E	Construction⁽⁴⁾	<i>SNE</i>	1.2	2.6	1.9	1.3	2.8	3.2	4.3	0.4	1.1
F	Wholesale trade⁽⁴⁾	<i>SNF</i>	0.9	4.8	8.8	2.6	0.7	7.5	3.6	0.2	-8.0
G	Retail trade⁽⁴⁾	<i>SNG</i>	0.3	0.7	1.2	1.0	0.3	1.8	0.9	0.1	-0.2
H	Accommodation, cafes and restaurants⁽⁴⁾	<i>SNH</i>	0.1	0.6	1.2	0.7	-0.3	1.8	1.1	1.4	-0.9
I	Transport and storage	<i>SNI</i>	-2.2	5.6	2.8	3.1	2.5	4.8	2.3	-2.6	-2.1
I01	Road transport	<i>SNI01</i>	0.9	2.4	3.9	1.9	3.8	4.5	4.0	-2.4	-0.3
I03	Water transport	<i>SNI03</i>	0.6	2.1	3.4	2.1	1.6	2.4	-0.3	-1.2	0.2
I04	Air transport	<i>SNI04</i>	-6.1	10.5	2.4	4.8	2.2	6.3	2.0	-3.9	-4.4
I02 I09	Rail, other transport and storage services ⁽⁵⁾	<i>SNI09</i>	1.1	0.7	1.9	1.4	1.9	2.0	1.0	-0.3	0.2
J	Communication services⁽⁴⁾	<i>SNJ</i>	0.8	0.7	0.9	0.3	1.2	2.1	1.6	-0.7	0.1

For footnotes, see end of table.

Producers Price Index: March 2007 quarter

Table 4
continued

Producers Price Index
Inputs
Percentage change from previous quarter

Industry group	Series ref: PPIQ	Quarter									
		2005				2006				2007	
		Mar	Jun	Sep	Dec	Mar	Jun	Sep	Dec	Mar	
K Finance and insurance	<i>SNK</i>	0.5	0.7	0.9	0.6	0.8	1.4	0.6	0.4	0.4	
K01 Finance	<i>SNK01</i>	0.7	0.5	0.9	0.7	0.6	1.6	0.5	0.6	0.3	
K02 Insurance	<i>SNK02</i>	0.3	0.9	0.6	0.6	0.9	0.8	0.6	0.2	0.5	
K03 Services to finance and insurance	<i>SNK03</i>	0.6	0.9	1.0	0.6	1.1	2.0	1.0	0.2	0.6	
L Property and business services	<i>SNL</i>	0.5	1.4	1.1	0.8	1.1	1.2	1.2	0.5	0.6	
L01 Real estate	<i>SNL01</i>	1.1	2.4	1.6	0.8	1.4	1.4	1.0	0.4	1.1	
L02 Ownership of owner-occupied dwellings	<i>SNL02</i>	0.5	0.9	2.1	0.9	1.4	1.2	2.9	1.0	0.8	
L03 Other property services	<i>SNL03</i>	0.3	1.4	1.1	1.1	1.4	1.9	1.6	0.2	-0.1	
L04 Business services	<i>SNL04</i>	0.4	1.2	0.7	0.8	0.8	1.1	0.7	0.3	0.2	
M Public administration and defence⁽⁴⁾⁽⁶⁾	<i>SNM</i>	0.9	1.0	1.3	0.7	0.9	1.5	0.8	-0.2	0.2	
M01 Central government and defence ⁽⁷⁾⁽⁸⁾	<i>SNM01</i>	0.9	0.9	1.2	0.7	0.7	1.2	0.7	0.1	0.2	
M02 Local government and civil defence ⁽⁹⁾	<i>SNM02</i>	1.0	1.3	1.2	0.7	1.1	1.9	1.0	-0.4	0.2	
N Education⁽⁴⁾	<i>SNV</i>	0.6	0.8	0.8	0.4	0.5	1.0	0.6	0.3	0.4	
O Health and community services⁽⁴⁾	<i>SNO</i>	0.4	1.4	0.9	0.6	0.5	1.5	0.5	0.3	0.2	
P Cultural and recreational services⁽⁴⁾	<i>SNP</i>	0.3	1.5	0.8	0.8	0.8	1.1	0.7	0.2	0.5	
Q Personal and other services⁽⁴⁾	<i>SNQ</i>	0.7	0.8	2.8	0.8	2.4	1.5	2.0	0.3	-0.7	
X01 Agriculture	<i>SNX01</i>	1.3	2.0	2.4	-0.3	0.4	1.7	0.7	-1.4	0.4	
X05 Food, beverage and tobacco	<i>SNX05</i>	-1.9	1.0	3.3	-1.1	-3.2	2.4	5.9	0.4	-4.3	
X08 Paper, printing and publishing	<i>SNX08</i>	0.1	0.3	0.7	0.5	0.0	3.2	2.3	-0.1	-0.4	
X09 Chemicals, petroleum and plastics	<i>SNX09</i>	2.6	2.5	0.5	0.8	1.6	1.6	2.5	0.3	-0.2	
X12 Machinery and metal products	<i>SNX12</i>	-0.3	1.4	1.1	1.2	0.7	4.2	3.4	0.8	1.3	
8 All industries excl admin health education	<i>SN8</i>	0.3	2.1	3.0	1.3	0.9	2.7	2.1	-0.4	-1.6	
9 ALL INDUSTRIES	<i>SN9</i>	0.3	2.0	2.9	1.2	0.9	2.7	2.0	-0.3	-1.6	

- (1) Agriculture input indexes by farm type are based on Farm Expenses Price Index (FEPI) categories, not ANZSIC categories. Output Agriculture indexes by farm type are based on ANZSIC.
- (2) Tobacco product manufacturing has been combined with Beverage and malt manufacturing for confidentiality reasons.
- (3) The Water supply industry index is not of sufficient quality and a separate index for it is not published.
- (4) The series reference has changed, as at the June 2000 quarter, for consistency with series references for other divisions. The composition of this index is unchanged.
- (5) Rail transport has been combined with Other transport and storage services for confidentiality reasons.
- (6) The official industry group title of Government administration, defence, public order and safety services has been abbreviated to Public administration and defence in this publication.
- (7) The series reference PPIQ.SNM01 was published prior to the June 2000 quarter and differs from this series. The series for Government administration, defence, public order and safety service, which includes both central and local government services, is now published with the series reference PPIQ.SNM.
- (8) The official sub-industry group title of Central government administration, defence, public order and safety services has been abbreviated to Central government and defence in this publication.
- (9) The official sub-industry group title of Local government administration services and civil defence has been abbreviated to Local government and civil defence in this publication.

Producers Price Index: March 2007 quarter

Table 5

Producers Price Index
Outputs – selected industries
 Percentage change from same quarter of previous year

Industry group	Series ref: PPIQ	Quarter									
		2005				2006				2007	
		Mar	Jun	Sep	Dec	Mar	Jun	Sep	Dec	Mar	
A	Agriculture, forestry and fishing	<i>SUA</i>	1.6	0.3	0.3	-1.0	-2.7	0.0	4.2	8.4	7.2
A02	Livestock and cropping farming	<i>SUA02</i>	6.0	3.1	0.2	-3.9	-7.8	-5.9	-1.8	5.2	2.7
A03	Dairy cattle farming	<i>SUA03</i>	-0.4	-0.4	1.7	0.6	-0.2	0.4	5.0	6.1	6.1
A04	Other farming	<i>SUA04</i>	2.1	1.3	0.9	-0.5	-3.1	-1.7	3.1	5.9	9.2
A06	Forestry and logging	<i>SUA06</i>	-3.7	-5.3	-2.0	2.4	1.0	4.6	8.0	12.7	16.1
B	Mining	<i>SUB</i>	14.1	9.9	16.3	18.2	22.4	32.4	27.0	10.8	1.1
C	Manufacturing	<i>SUC</i>	4.3	3.1	3.9	3.1	2.8	5.4	4.7	4.2	3.8
C01	Meat and meat product mfg	<i>SUC01</i>	5.4	-2.0	1.1	-3.0	-4.6	-1.4	1.3	2.6	3.3
C02	Dairy product mfg	<i>SUC02</i>	11.2	9.6	12.5	8.4	10.1	10.7	2.0	-1.1	-3.4
C03	Other food mfg	<i>SUC03</i>	0.4	0.0	0.7	2.4	2.4	4.2	4.6	4.4	4.0
C08	Paper and paper product mfg	<i>SUC08</i>	-0.2	-4.6	-2.0	0.4	0.1	6.3	8.6	7.2	9.2
C09	Printing, publishing and recorded media	<i>SUC09</i>	2.8	3.8	3.2	3.1	2.1	1.5	1.2	0.0	0.6
C10	Petroleum, coal and basic chemical mfg	<i>SUC10</i>	3.1	7.1	5.9	8.3	3.7	18.4	10.0	0.4	4.5
C13	Basic metal mfg	<i>SUC13</i>	18.3	11.6	11.3	9.2	-2.1	8.3	10.4	14.3	15.5
D	Electricity, gas and water⁽¹⁾	<i>SUD</i>	-5.3	5.1	18.6	25.8	29.1	22.9	8.6 R	-3.5 R	-11.0 R
D01	Electricity generation and supply	<i>SUD01</i>	-7.7	4.4	20.5	28.9	33.2	25.3	8.0 R	-6.0 R	-13.8 R
E	Construction⁽²⁾	<i>SUE</i>	6.9	5.9	5.7	5.8	6.2	5.7	6.1	5.9	5.3
F	Wholesale trade⁽²⁾	<i>SUF</i>	2.5	2.7	5.2	4.0	5.5	9.4	6.9	6.5	4.9
G	Retail trade⁽²⁾	<i>SUG</i>	1.4	1.3	2.6	2.2	2.5	3.6	2.8	1.8	1.4
H	Accommodation, cafes and restaurants⁽²⁾	<i>SUH</i>	3.5	3.0	2.7	2.7	2.6	3.1	3.7	3.5	3.5
I	Transport and storage	<i>SUI</i>	2.9	2.5	3.6	3.2	4.0	7.6	7.0	6.8	6.4
I01	Road transport	<i>SUI01</i>	3.7	4.4	4.3	5.0	6.1	7.0	6.8	5.5	4.9
I04	Air transport	<i>SUI04</i>	2.2	2.1	4.3	2.4	2.8	10.8	7.6	7.9	6.6
J	Communication services⁽²⁾	<i>SUJ</i>	-0.9	-0.4	2.3	2.0	2.9	3.6	2.1	1.1	0.7
K	Finance and insurance	<i>SUK</i>	2.5	1.4	-1.0	-0.8	-1.9	-0.6	-0.6	-2.3	-1.6
K01	Finance	<i>SUK01</i>	1.5	0.0	-4.1	-2.6	-4.6	-2.2	-1.9	-5.7	-4.9
L	Property and business services	<i>SUL</i>	3.1	3.5	3.4	3.2	3.1	2.7	2.3	2.7	2.9
L04	Business services	<i>SUL04</i>	4.0	4.3	3.8	3.6	2.9	2.4	2.6	2.8	3.4
P	Cultural and recreational services	<i>SUP</i>	2.7	3.4	3.4	3.6	3.1	2.9	3.0	2.7	3.0
Q	Personal and other services	<i>SUQ</i>	3.9	3.1	4.5	4.2	4.5	4.0	3.5	3.3	3.2
9	ALL INDUSTRIES	<i>SU9</i>	3.2	3.0	4.1	3.9	4.0	5.6	4.8 R	4.0 R	3.1 R

(1) The Water supply industry index is not of sufficient quality and a separate index for it is not published.

(2) The series reference has changed, as at the June 2000 quarter, for consistency with series references for other divisions. The composition of this index is unchanged.

Symbol

R revised

Producers Price Index: March 2007 quarter

Table 6

Producers Price Index
Inputs – selected industries
 Percentage change from same quarter of previous year

Industry group	Series ref: PPIQ	Quarter									
		2005				2006				2007	
		Mar	Jun	Sep	Dec	Mar	Jun	Sep	Dec	Mar	
A	Agriculture, forestry and fishing	<i>SNA</i>	4.5	4.7	6.0	4.9	4.2	4.4	3.0	2.1	2.1
A02	Sheep and beef farming ⁽¹⁾	<i>SNA02</i>	5.7	5.8	6.9	5.7	4.0	3.9	2.2	0.1	0.6
A03	Dairy cattle farming	<i>SNA03</i>	3.1	5.2	7.0	6.0	6.3	5.5	3.7	3.1	2.9
A04	Cropping and other farming ⁽¹⁾	<i>SNA04</i>	7.1	7.2	8.0	4.1	2.1	1.3	0.0	0.8	1.0
A06	Forestry and logging	<i>SNA06</i>	1.6	1.4	3.2	3.3	2.8	3.8	3.7	4.1	4.3
B	Mining	<i>SNB</i>	5.2	3.8	4.5	5.6	6.2	9.5	9.8	9.1	8.4
C	Manufacturing	<i>SNC</i>	4.1	2.6	2.7	2.3	2.0	3.9	5.9	6.1	5.4
C01	Meat and meat product mfg	<i>SNC01</i>	9.1	6.2	2.7	-1.7	-6.2	-4.1	0.3	6.3	3.5
C02	Dairy product mfg	<i>SNC02</i>	0.6	-0.4	1.8	1.7	1.6	1.8	5.1	4.5	4.8
C03	Other food mfg	<i>SNC03</i>	0.9	2.5	3.4	2.6	3.2	5.9	6.9	6.3	4.0
C08	Paper and paper product mfg	<i>SNC08</i>	6.5	-0.3	1.4	2.5	1.7	5.6	6.7	5.7	5.7
C09	Printing, publishing and recorded media	<i>SNC09</i>	0.8	-0.7	0.9	0.6	1.2	3.2	5.5	5.2	4.4
C10	Petroleum, coal and basic chemical mfg	<i>SNC10</i>	8.2	10.7	8.8	9.8	8.7	6.3	9.5	8.2	5.2
C13	Basic metal mfg	<i>SNC13</i>	8.8	3.8	-2.1	-0.1	2.6	15.7	15.4	9.6	10.2
D	Electricity, gas and water⁽²⁾	<i>SND</i>	-12.5	1.7	21.7	34.9	40.5	22.2	-2.8	-20.7	-27.4
D01	Electricity generation and supply	<i>SND01</i>	-15.7	0.8	24.7	40.1	46.9	23.6	-5.9	-25.0	-31.6
E	Construction⁽³⁾	<i>SNE</i>	6.4	6.6	7.2	7.2	8.9	9.5	12.0	11.0	9.2
F	Wholesale trade⁽³⁾	<i>SNF</i>	8.8	10.7	15.3	18.0	17.8	20.9	15.1	12.4	2.7
G	Retail trade⁽³⁾	<i>SNG</i>	2.8	2.5	3.2	3.2	3.3	4.4	4.1	3.1	2.6
H	Accommodation, cafes and restaurants⁽³⁾	<i>SNH</i>	3.0	3.1	2.8	2.6	2.1	3.4	3.3	4.1	3.5
I	Transport and storage	<i>SNI</i>	6.9	8.2	10.0	9.4	14.7	13.9	13.4	7.0	2.2
I01	Road transport	<i>SNI01</i>	6.9	6.5	10.1	9.4	12.5	14.9	15.0	10.2	5.8
I04	Air transport	<i>SNI04</i>	8.4	11.4	12.1	11.3	21.1	16.5	16.1	6.5	-0.4
J	Communication services⁽³⁾	<i>SNJ</i>	2.4	1.9	3.2	2.6	3.1	4.5	5.3	4.2	3.0
K	Finance and insurance	<i>SNK</i>	2.2	2.3	2.7	2.7	2.9	3.7	3.4	3.2	2.8
K01	Finance	<i>SNK01</i>	2.2	2.2	2.7	2.9	2.8	3.9	3.4	3.3	3.0
L	Property and business services	<i>SNL</i>	3.1	3.6	3.9	3.9	4.5	4.3	4.4	4.0	3.5
L04	Business services	<i>SNL04</i>	2.2	2.9	3.2	3.1	3.5	3.3	3.4	2.9	2.4
M	Public administration and defence⁽³⁾⁽⁴⁾	<i>SNM</i>	4.0	3.8	4.1	3.9	3.9	4.4	4.0	3.1	2.4
N	Education	<i>SNN</i>	2.1	2.6	2.7	2.6	2.5	2.8	2.6	2.5	2.4
O	Health and community services⁽³⁾	<i>SNO</i>	1.9	2.9	3.3	3.4	3.4	3.6	3.2	2.9	2.6
P	Cultural and recreational services⁽³⁾	<i>SNP</i>	2.5	3.2	3.2	3.4	3.9	3.5	3.5	2.9	2.6
Q	Personal and other services⁽³⁾	<i>SNQ</i>	3.8	3.4	5.4	5.2	7.0	7.7	7.0	6.4	3.1
8	All industries excl admin health education	<i>SN8</i>	4.3	4.7	6.2	6.7	7.4	8.1	7.2	5.4	2.8
9	ALL INDUSTRIES	<i>SN9</i>	4.2	4.7	6.1	6.5	7.2	7.8	6.9	5.3	2.7

(1) Agriculture input indexes by farm type are based on Farm Expenses Price Index (FEPI) categories, not ANZSIC categories. Output Agriculture indexes by farm type are based on ANZSIC.

(2) The Water supply industry index is not of sufficient quality and a separate index for it is not published.

(3) The series reference has changed, as at the June 2000 quarter, for consistency with series references for other divisions. The composition of this index is unchanged.

(4) The official industry group title of Government administration, defence, public order and safety services has been abbreviated to Public administration and defence in this publication.

Producers Price Index: March 2007 quarter

Table 7

Producers Price Index
Selected commodities – index numbers and percentage changes
 Base: December 1997 Quarter (=1000)

Selected commodities	Series ref: PPIQ	Quarter								
		2005				2006				2007
		Mar	Jun	Sep	Dec	Mar	Jun	Sep	Dec	Mar
Livestock: sheep and lamb	SC01	1475	1503	1587	1492	1249	1249	1415	1507	1176
Livestock: cattle	SC02	1441	1469	1622	1518	1397	1489	1691	1641	1525
Livestock: deer	SC03	729	729	799	731	688	699	788	806	760
Wool	SC04	900	896	883	834	851	923	925	895	862
Logs for domestic market	SC05	929	921	910	907	901	918	934	948	965
Logs for export market	SC06	825	858	846	838	887	971	1022	1149	1346
Processed meat: beef	SC07	1482	1528	1605	1443	1487	1500	1536	1446	1459
Processed meat: sheep and lamb	SC08	1514	1447	1412	1338	1340	1406	1524	1357	1287
Dairy products (excl milk and ice cream)	SC09	1228	1287	1340	1313	1369	1440	1372	1301	1318
Carpet and textile floor coverings	SC10	1278	1281	1273	1280	1289	1302	1304	1306	1307
Pulp	SC11	1015	1017	983	1025	1045	1167	1242	1236	1195
Paper	SC12	1007	999	1004	993	999	1056	1079	1081	1084
Fertiliser	SC13	1136	1157	1182	1184	1216	1217	1236	1242	1275
Ready-mixed concrete	SC14	1203	1212	1224	1224	1256	1260	1265	1274	1297
Framing timber	SC15	1071	1078	1077	1076	1053	1061	1069	1059	1047
Electricity: commercial consumers	SC16	1202	1246	1264	1311	1301	1448	1350	1263	1150
Gas: commercial consumers	SC17	1584	1592	1593	1591	1631	1659	1672	1797	1865
Road freight	SC18	1201	1215	1237	1255	1285	1317	1335	1337	1343
International sea freight	SC19	871	919	936	957	950	991	951	902	850
Finance service charge	SC20	1129	1088	1078	1080	1016	1024	1023	965	926
Bank charges	SC21	1328	1327	1331	1363	1376	1370	1368	1367	1365
Commercial rent (excl agricultural land)	SC22	1068	1071	1084	1090	1094	1107	1112	1131	1133
Legal services: personal and corporate	SC23	1348	1358	1357	1361	1373	1375	1378	1394	1421
Accounting services	SC24	1500	1534	1558	1561	1562	1597	1616	1624	1638

Percentage change from previous quarter

Livestock: sheep and lamb	-8.8	1.9	5.6	-6.0	-16.3	0.0	13.3	6.5	-22.0
Livestock: cattle	-3.9	1.9	10.4	-6.4	-8.0	6.6	13.6	-3.0	-7.1
Livestock: deer	-4.8	0.0	9.6	-8.5	-5.9	1.6	12.7	2.3	-5.7
Wool	-5.4	-0.4	-1.5	-5.5	2.0	8.5	0.2	-3.2	-3.7
Logs for domestic market	1.2	-0.9	-1.2	-0.3	-0.7	1.9	1.7	1.5	1.8
Logs for export market	5.5	4.0	-1.4	-0.9	5.8	9.5	5.3	12.4	17.1
Processed meat: beef	0.8	3.1	5.0	-10.1	3.0	0.9	2.4	-5.9	0.9
Processed meat: sheep and lamb	8.0	-4.4	-2.4	-5.2	0.1	4.9	8.4	-11.0	-5.2
Dairy products (excl milk and ice cream)	1.9	4.8	4.1	-2.0	4.3	5.2	-4.7	-5.2	1.3
Carpet and textile floor coverings	-2.9	0.2	-0.6	0.5	0.7	1.0	0.2	0.2	0.1
Pulp	1.4	0.2	-3.3	4.3	2.0	11.7	6.4	-0.5	-3.3
Paper	-0.9	-0.8	0.5	-1.1	0.6	5.7	2.2	0.2	0.3
Fertiliser	9.3	1.8	2.2	0.2	2.7	0.1	1.6	0.5	2.7
Ready-mixed concrete	5.9	0.7	1.0	0.0	2.6	0.3	0.4	0.7	1.8
Framing timber	0.0	0.7	-0.1	-0.1	-2.1	0.8	0.8	-0.9	-1.1
Electricity: commercial consumers	0.7	3.7	1.4	3.7	-0.8	11.3	-6.8	-6.4	-8.9
Gas: commercial consumers	4.3	0.5	0.1	-0.1	2.5	1.7	0.8	7.5	3.8
Road freight	1.2	1.2	1.8	1.5	2.4	2.5	1.4	0.1	0.4
International sea freight	1.0	5.5	1.8	2.2	-0.7	4.3	-4.0	-5.2	-5.8
Finance service charge	-1.8	-3.6	-0.9	0.2	-5.9	0.8	-0.1	-5.7	-4.0
Bank charges	0.2	-0.1	0.3	2.4	1.0	-0.4	-0.1	-0.1	-0.1
Commercial rent (excl agricultural land)	0.6	0.3	1.2	0.6	0.4	1.2	0.5	1.7	0.2
Legal services: personal and corporate	5.2	0.7	-0.1	0.3	0.9	0.1	0.2	1.2	1.9
Accounting services	0.2	2.3	1.6	0.2	0.1	2.2	1.2	0.5	0.9

Farm Expenses Price Index: March 2007 quarter

Table 1.01

Farm Expenses Price Index
All Farms – Index Numbers
 Base: December 1992 quarter (=1000)

Input type	Series ref: FPIQ	Quarter									
		2005				2006				2007	
		Mar	Jun	Sep	Dec	Mar	Jun	Sep	Dec	Mar	
Administration	SI9A	1401	1412	1427	1431	1437	1454	1466	1465	1485	
Animal health and breeding	SI9B	1280	1291	1302	1314	1328	1328	1335	1278	1284	
Dairy shed expenses	SI9C	1323	1345	1330	1352	1371	1375	1384	1414	1427	
Electricity	SI9F	1526	1572	1680	1746	1746	1819	1822	1819	1818	
Feed, grazing, cultivation and harvesting	SI9G	1311	1330	1338	1340	1347	1365	1375	1376	1390	
Fertiliser, lime and seeds	SI9H	1051	1072	1092	1089	1109	1114	1123	1129	1139	
Freight	SI9I	1008	1013	1040	1068	1084	1105	1145	1144	1145	
Fuel	SI9J	1419	1541	1793	1698	1765	2112	2092	1809	1802	
Insurance premiums	SI9K	1368	1369	1369	1368	1369	1332	1337	1337	1339	
Rent and hire	SI9L	1573	1575	1588	1591	1598	1598	1598	1594	1595	
Repairs, maintenance and motor vehicle repairs	SI9M	1305	1332	1341	1350	1365	1366	1390	1379	1394	
Packaging costs	SI9N	998	1002	1002	1001	1000	1003	1003	1004	1006	
Shearing	SI9O	1483	1506	1554	1617	1635	1635	1662	1684	1687	
Weed and pest control	SI9Q	1197	1207	1218	1219	1239	1245	1259	1261	1257	
Subtotal excluding livestock	SI9Y	1275	1300	1332	1335	1351	1381	1392	1370	1378	
Livestock purchases	SI9R	1628	1663	1687	1648	1591	1577	1575	1566	1565	
Subtotal including livestock	SI9Z	1330	1356	1387	1384	1388	1411	1420	1400	1407	
Local and central government rates and fees	SI9U	1364	1364	1364	1442	1442	1442	1438	1516	1516	
Interest rates	SI9V	835	854	852	866	877	880	884	888	893	
Wages and salaries	SI9W	1238	1248	1255	1266	1271	1276	1285	1291	1299	
All inputs excluding livestock	SI98	1189	1210	1231	1241	1254	1274	1283	1273	1280	
ALL INPUTS INCLUDING LIVESTOCK	SI99	1236	1258	1280	1284	1290	1306	1314	1304	1311	

Table 1.02

Farm Expenses Price Index
All farms
 Percentage change from previous quarter

Input type	Series ref: FPIQ	Quarter									
		2005				2006				2007	
		Mar	Jun	Sep	Dec	Mar	Jun	Sep	Dec	Mar	
Administration	SI9A	0.4	0.8	1.1	0.3	0.4	1.2	0.8	-0.1	1.4	
Animal health and breeding	SI9B	0.4	0.9	0.9	0.9	1.1	0.0	0.5	-4.3	0.5	
Dairy shed expenses	SI9C	1.9	1.7	-1.1	1.7	1.4	0.3	0.7	2.2	0.9	
Electricity	SI9F	0.0	3.0	6.9	3.9	0.0	4.2	0.2	-0.2	-0.1	
Feed, grazing, cultivation and harvesting	SI9G	-0.2	1.4	0.6	0.1	0.5	1.3	0.7	0.1	1.0	
Fertiliser, lime and seeds	SI9H	1.5	2.0	1.9	-0.3	1.8	0.5	0.8	0.5	0.9	
Freight	SI9I	1.5	0.5	2.7	2.7	1.5	1.9	3.6	-0.1	0.1	
Fuel	SI9J	0.4	8.6	16.4	-5.3	3.9	19.7	-0.9	-13.5	-0.4	
Insurance premiums	SI9K	0.7	0.1	0.0	-0.1	0.1	-2.7	0.4	0.0	0.1	
Rent and hire	SI9L	0.2	0.1	0.8	0.2	0.4	0.0	0.0	-0.3	0.1	
Repairs, maintenance and motor vehicle repairs	SI9M	1.1	2.1	0.7	0.7	1.1	0.1	1.8	-0.8	1.1	
Packaging costs	SI9N	-0.6	0.4	0.0	-0.1	-0.1	0.3	0.0	0.1	0.2	
Shearing	SI9O	0.7	1.6	3.2	4.1	1.1	0.0	1.7	1.3	0.2	
Weed and pest control	SI9Q	-0.1	0.8	0.9	0.1	1.6	0.5	1.1	0.2	-0.3	
Subtotal excluding livestock	SI9Y	0.6	2.0	2.5	0.2	1.2	2.2	0.8	-1.6	0.6	
Livestock purchases	SI9R	4.4	2.1	1.4	-2.3	-3.5	-0.9	-0.1	-0.6	-0.1	
Subtotal including livestock	SI9Z	1.2	2.0	2.3	-0.2	0.3	1.7	0.6	-1.4	0.5	
Local and central government rates and fees	SI9U	-1.2	0.0	0.0	5.7	0.0	0.0	-0.3	5.4	0.0	
Interest rates	SI9V	1.3	2.3	-0.2	1.6	1.3	0.3	0.5	0.5	0.6	
Wages and salaries	SI9W	0.3	0.8	0.6	0.9	0.4	0.4	0.7	0.5	0.6	
All inputs excluding livestock	SI98	0.5	1.8	1.7	0.8	1.0	1.6	0.7	-0.8	0.5	
ALL INPUTS INCLUDING LIVESTOCK	SI99	1.1	1.8	1.7	0.3	0.5	1.2	0.6	-0.8	0.5	

Farm Expenses Price Index: March 2007

Table 1.03

Farm Expenses Price Index – All Farms
Percentage change from same quarter of the previous year

Input type	Series ref: FPIQ	2005				2006				2007
		Mar	Jun	Sep	Dec	Mar	Jun	Sep	Dec	Mar
Administration	SI9A	4.8	2.4	3.0	2.5	2.6	3.0	2.7	2.4	3.3
Animal health and breeding	SI9B	2.1	1.6	2.5	3.1	3.8	2.9	2.5	-2.7	-3.3
Dairy shed expenses	SI9C	1.7	2.2	1.5	4.2	3.6	2.2	4.1	4.6	4.1
Electricity	SI9F	5.4	6.6	10.4	14.4	14.4	15.7	8.5	4.2	4.1
Feed, grazing, cultivation and harvesting	SI9G	0.5	1.2	1.0	2.0	2.7	2.6	2.8	2.7	3.2
Fertiliser, lime and seeds	SI9H	2.0	3.2	5.6	5.2	5.5	3.9	2.8	3.7	2.7
Freight	SI9I	6.1	5.3	6.6	7.6	7.5	9.1	10.1	7.1	5.6
Fuel	SI9J	20.8	19.1	29.7	20.2	24.4	37.1	16.7	6.5	2.1
Insurance premiums	SI9K	1.6	1.3	1.2	0.7	0.1	-2.7	-2.3	-2.3	-2.2
Rent and hire	SI9L	0.8	1.0	1.1	1.3	1.6	1.5	0.6	0.2	-0.2
Repairs, maintenance and motor vehicle repairs	SI9M	5.5	6.8	5.5	4.6	4.6	2.6	3.7	2.1	2.1
Packaging costs	SI9N	3.4	2.5	0.1	-0.3	0.2	0.1	0.1	0.3	0.6
Shearing	SI9O	2.7	3.8	6.1	9.8	10.2	8.6	6.9	4.1	3.2
Weed and pest control	SI9Q	1.1	1.9	1.3	1.8	3.5	3.1	3.4	3.4	1.5
Subtotal excluding livestock	SI9R	9.6	11.2	11.9	5.6	-2.3	-5.2	-6.6	-5.0	-1.6
Livestock purchases	SI9Y	4.0	4.4	5.6	5.3	6.0	6.2	4.5	2.6	2.0
Subtotal including livestock	SI9Z	5.1	5.6	6.7	5.3	4.4	4.1	2.4	1.2	1.4
Local and central government rates and fees	SI9U	3.5	3.5	3.9	4.4	5.7	5.7	5.4	5.1	5.1
Interest rates	SI9V	9.9	9.9	6.1	5.1	5.0	3.0	3.8	2.5	1.8
Wages and salaries	SI9W	3.3	3.1	2.4	2.6	2.7	2.2	2.4	2.0	2.2
All inputs excluding livestock	SI98	4.7	4.9	5.2	4.9	5.5	5.3	4.2	2.6	2.1
ALL INPUTS INCLUDING LIVESTOCK	SI99	5.4	5.7	6.0	5.0	4.4	3.8	2.7	1.6	1.6

Farm Expenses Price Index: March 2007 quarter

Table 2

Farm Expenses Price Index
Sheep and Beef Farms – Index Numbers
 Base: December 1992 quarter (=1000)

Input type	Series ref: FPIQ	Quarter								
		2005				2006				2007
		Mar	Jun	Sep	Dec	Mar	Jun	Sep	Dec	Mar
Administration	SI3A	1434	1442	1465	1469	1474	1499	1512	1511	1534
Animal health and breeding	SI3B	1232	1246	1248	1266	1290	1292	1287	1145	1145
Electricity	SI3F	1465	1509	1612	1676	1676	1746	1749	1746	1744
Feed, grazing, cultivation and harvesting	SI3G	1391	1419	1412	1414	1430	1453	1454	1440	1445
Fertiliser, lime and seeds	SI3H	1042	1064	1086	1082	1104	1107	1116	1122	1132
Freight	SI3I	1008	1013	1040	1068	1084	1105	1145	1144	1145
Fuel	SI3J	1419	1541	1793	1698	1765	2112	2092	1809	1802
Insurance premiums	SI3K	1362	1361	1362	1361	1362	1314	1317	1317	1319
Rent and hire	SI3L	1600	1602	1613	1615	1620	1621	1621	1614	1614
Repairs, maintenance and motor vehicle repairs	SI3M	1305	1332	1341	1350	1365	1366	1390	1379	1394
Shearing	SI3O	1483	1506	1554	1617	1635	1635	1662	1684	1687
Weed and pest control	SI3Q	1266	1271	1285	1290	1314	1320	1337	1341	1337
Subtotal excluding livestock	SI3Y	1303	1331	1369	1376	1396	1429	1441	1408	1415
Livestock purchases	SI3R	1830	1841	1855	1827	1725	1707	1704	1689	1685
Subtotal including livestock	SI3Z	1399	1424	1458	1458	1456	1480	1489	1459	1465
Local and central government rates and fees	SI3U	1383	1383	1383	1469	1469	1469	1465	1573	1573
Interest rates	SI3V	836	853	850	865	876	879	883	887	891
Wages and salaries	SI3W	1238	1248	1255	1266	1271	1276	1285	1291	1299
All inputs excluding livestock	SI38	1206	1229	1254	1266	1282	1305	1314	1299	1305
ALL INPUTS INCLUDING LIVESTOCK	SI39	1286	1307	1331	1338	1339	1357	1364	1349	1354

Table 3

Farm Expenses Price Index
Dairy Farms – Index Numbers
 Base: December 1992 quarter (=1000)

Input type	Series ref: FPIQ	Quarter								
		2005				2006				2007
		Mar	Jun	Sep	Dec	Mar	Jun	Sep	Dec	Mar
Administration	SI4A	1383	1389	1392	1394	1400	1413	1423	1421	1438
Animal health and breeding	SI4B	1356	1365	1386	1391	1391	1390	1411	1447	1460
Dairy shed expenses	SI4C	1323	1345	1330	1352	1371	1375	1384	1414	1427
Miscellaneous expenses	SI4D	1192	1203	1224	1242	1250	1265	1280	1288	1292
Electricity	SI4F	1653	1703	1820	1892	1892	1971	1974	1970	1969
Feed, grazing, cultivation and harvesting	SI4G	1335	1355	1367	1359	1359	1381	1399	1395	1405
Fertiliser, lime and seeds	SI4H	1042	1064	1086	1082	1104	1107	1116	1122	1132
Freight	SI4I	1008	1013	1040	1068	1084	1105	1145	1144	1145
Fuel	SI4J	1419	1541	1793	1698	1765	2112	2092	1809	1802
Insurance premiums	SI4K	1420	1426	1427	1426	1427	1393	1396	1396	1397
Rent and hire	SI4L	1603	1605	1613	1616	1620	1621	1621	1614	1614
Repairs, maintenance and motor vehicle repairs	SI4M	1305	1332	1341	1350	1365	1366	1390	1379	1394
Weed and pest control	SI4Q	1248	1251	1265	1271	1293	1297	1314	1318	1314
Subtotal excluding livestock	SI4Y	1303	1327	1356	1357	1369	1395	1408	1398	1407
Livestock purchases	SI4R	1018	1127	1185	1178	1180	1214	1216	1216	1216
Subtotal including livestock	SI4Z	1261	1297	1331	1330	1341	1368	1380	1371	1379
Local and central government rates and fees	SI4U	1328	1328	1328	1378	1378	1378	1374	1423	1423
Interest rates	SI4V	813	832	832	843	854	857	862	866	870
Wages and salaries	SI4W	1238	1248	1255	1266	1271	1276	1285	1291	1299
All inputs excluding livestock	SI48	1168	1189	1207	1213	1224	1241	1252	1249	1256
ALL INPUTS INCLUDING LIVESTOCK	SI49	1154	1183	1205	1210	1220	1239	1248	1245	1252

Farm Expenses Price Index: March 2007 quarter

Table 4

Farm Expenses Price Index
Horticultural Farms – Index Numbers
 Base: December 1992 quarter (=1000)

Input type	Series ref: FPIQ	Quarter								
		2005				2006				2007
		Mar	Jun	Sep	Dec	Mar	Jun	Sep	Dec	Mar
Administration	SI6A	1332	1355	1364	1369	1377	1382	1393	1393	1402
Animal health and breeding	SI6B	1232	1246	1248	1266	1290	1292	1287	1145	1145
Electricity	SI6F	1440	1484	1585	1648	1648	1717	1719	1716	1715
Feed, grazing, cultivation and harvesting	SI6G	1250	1272	1299	1312	1326	1349	1354	1370	1384
Fertiliser, lime and seeds	SI6H	1107	1122	1130	1128	1142	1154	1168	1172	1179
Freight	SI6I	1008	1013	1040	1068	1084	1105	1145	1144	1145
Fuel	SI6J	1419	1541	1793	1698	1765	2112	2092	1809	1802
Insurance premiums	SI6K	1230	1240	1232	1230	1232	1210	1226	1228	1231
Rent and hire	SI6L	1503	1506	1525	1532	1541	1542	1543	1542	1545
Repairs, maintenance and motor vehicle repairs	SI6M	1305	1332	1341	1350	1365	1366	1390	1379	1394
Packaging costs	SI6N	999	1003	1002	1002	1001	1003	1004	1004	1006
Weed and pest control	SI6Q	1105	1121	1128	1124	1139	1144	1155	1155	1149
Subtotal excluding livestock	SI6Y	1169	1189	1212	1212	1223	1249	1257	1243	1247
Livestock purchases	SI6R	1653	1686	1707	1650	1621	1599	1596	1589	1590
Subtotal including livestock	SI6Z	1182	1202	1225	1223	1233	1258	1266	1252	1256
Local and central government rates and fees	SI6U	1579	1579	1579	1696	1696	1696	1692	1729	1729
Interest rates	SI6V	852	883	882	896	908	910	913	918	922
Wages and salaries	SI6W	1238	1248	1255	1266	1271	1276	1285	1291	1299
All inputs excluding livestock	SI68	1154	1172	1189	1195	1205	1222	1230	1223	1229
ALL INPUTS INCLUDING LIVESTOCK	SI69	1162	1181	1198	1202	1212	1229	1236	1230	1235

Table 5

Farm Expenses Price Index
Cropping and Other Farms – Index Numbers
 Base: December 1992 quarter (=1000)

Input type	Series ref: FPIQ	Quarter								
		2005				2006				2007
		Mar	Jun	Sep	Dec	Mar	Jun	Sep	Dec	Mar
Administration	SI8A	1405	1413	1429	1433	1440	1451	1461	1461	1488
Animal health and breeding	SI8B	1145	1153	1161	1170	1196	1195	1191	1189	1198
Electricity	SI8F	1425	1469	1569	1631	1631	1700	1702	1699	1698
Feed, grazing, cultivation and harvesting	SI8G	1255	1263	1270	1276	1280	1286	1298	1306	1333
Fertiliser, lime and seeds	SI8H	1042	1064	1086	1082	1104	1107	1116	1122	1132
Freight	SI8I	1008	1013	1040	1068	1084	1105	1145	1144	1145
Fuel	SI8J	1419	1541	1793	1698	1765	2112	2092	1809	1802
Insurance premiums	SI8K	1451	1441	1442	1445	1446	1431	1434	1432	1435
Rent and hire	SI8L	1570	1572	1585	1589	1596	1596	1597	1592	1594
Repairs, maintenance, motor vehicle repairs	SI8M	1305	1332	1341	1350	1365	1366	1390	1379	1394
Packaging costs	SI8N	989	993	991	991	990	993	995	995	997
Shearing	SI8O	1483	1506	1554	1617	1635	1635	1662	1684	1687
Weed and pest control	SI8Q	1266	1271	1285	1290	1314	1320	1337	1341	1337
Subtotal excluding livestock	SI8Y	1281	1299	1329	1330	1344	1372	1382	1366	1381
Livestock purchases	SI8R	1754	1775	1789	1682	1680	1621	1621	1617	1621
Subtotal including livestock	SI8Z	1396	1415	1441	1416	1425	1433	1440	1427	1439
Local and central government rates and fees	SI8U	1244	1244	1244	1313	1313	1313	1309	1353	1353
Interest rates	SI8V	879	898	894	911	921	924	927	934	939
Wages and salaries	SI8W	1238	1248	1255	1266	1271	1276	1285	1291	1299
All inputs excluding livestock	SI88	1231	1247	1268	1277	1288	1309	1318	1311	1322
ALL INPUTS INCLUDING LIVESTOCK	SI89	1329	1346	1366	1353	1362	1368	1374	1368	1378