

Embargoed until 3:00pm – 19 July 2007

Producers Price Index: September 2006 quarter Revised 19 July 2007 – See attached Erratum

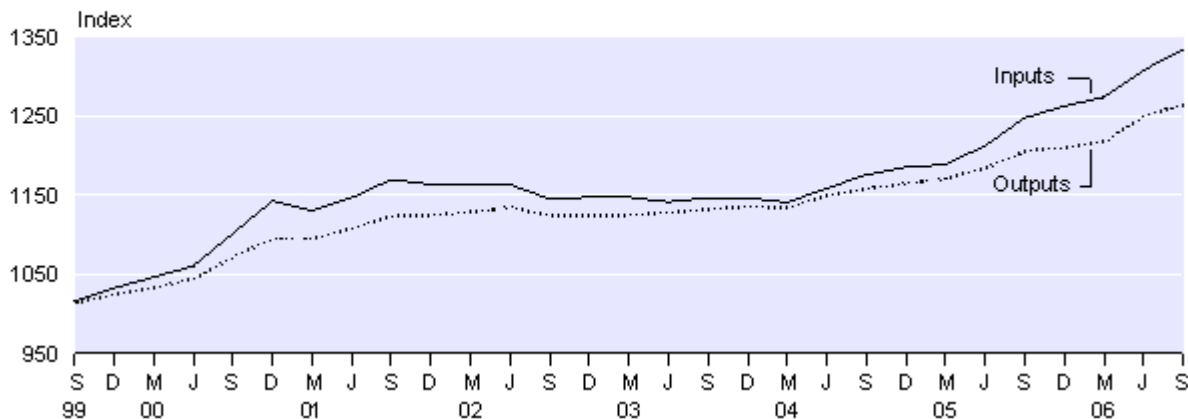
Highlights

- **The PPI outputs index rose 1.0 percent** in the September 2006 quarter.
- **Output prices rose 4.8 percent** between the September 2005 and September 2006 quarters.
- **Output prices for livestock and cropping farming rose 10.3 percent** in the September 2006 quarter.
- **The PPI inputs index rose 2.0 percent** in the September 2006 quarter.
- **Input prices rose 6.9 percent** between the September 2005 and September 2006 quarters.
- **Input prices for wholesale trade rose 3.6 percent** in the September 2006 quarter.

Producers Price Index

All industries – inputs and outputs

Base: December 1997 quarter (=1000)



Brian Pink
Government Statistician

14 November 2006
Cat 70.906 Set 06/07 – 073

There is a companion Media Release published – *Producers Price Index: September 2006 quarter*.

Commentary

Outputs

Output prices for all industries in the Producers Price Index (PPI) rose 1.0 percent in the September 2006 quarter, following increases of 2.7 percent and 0.7 percent in the June 2006 and March 2006 quarters, respectively. This is the tenth consecutive quarterly increase in the PPI outputs index, and continues the longest sustained period of quarterly increases in the PPI outputs series in the last decade.

In contrast to recent quarters, energy costs were not a significant factor cited by respondents for rises in their own output prices during the September 2006 quarter. However, the effect of the changes to the exchange rate and international prices, as well as increased costs of labour, were noted by respondents as being drivers of the price change.

The most significant contribution to the PPI outputs index in the September 2006 quarter came from a 10.3 percent rise in the livestock and cropping farming index. This was the result of higher market prices for livestock, especially lambs, as well as cattle and calves. Despite the current quarter's rise, movements in the livestock and cropping farming index are still in negative territory on an annual basis, and the index is 1.8 percent lower than in the September 2005 quarter. Additionally, the current quarter's index number represents prices being 13.0 percent lower than the record high figure for this series recorded in the September 2001 quarter.

Other positive contributors to the overall outputs increase were a 2.4 percent rise in the construction index, a 4.7 percent increase in the meat and meat product manufacturing index, and a 10.7 percent increase in the horticulture and fruit growing index. Increased costs of electrical installation services (a response to increased labour charges and material costs) pushed the construction index higher. Better export prices for frozen lamb cuts drove the rise in the meat and meat product manufacturing index, while vegetable price increases, especially tomatoes, caused the horticulture and fruit growing index to rise.

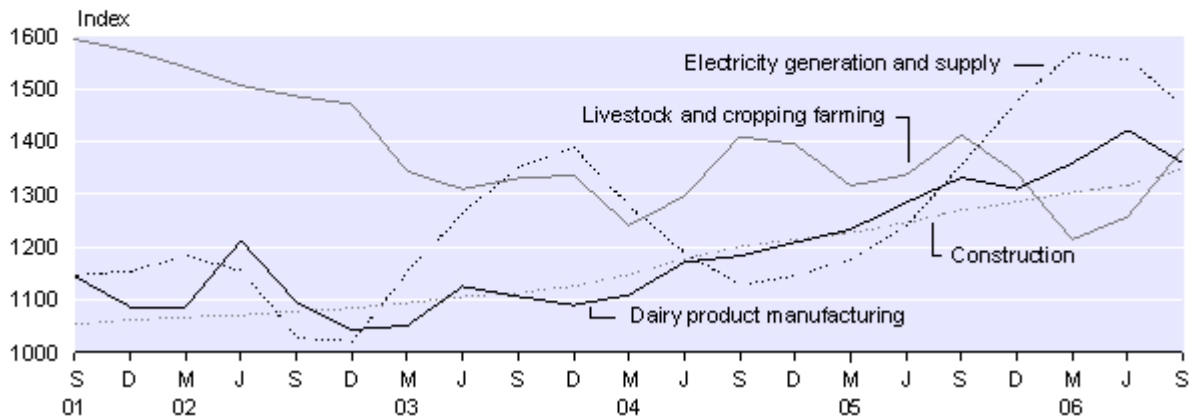
Two industries that produced significant downward contributions to the PPI outputs index in the September 2006 quarter were the electricity generation and supply index (down 5.6 percent) and the dairy product manufacturing index (down 4.4 percent). Lower spot market generation prices, along with a 6.8 percent fall in commercial electricity retail prices, drove the electricity generation and supply index downward, while higher transmission costs and domestic electricity retail prices moved in an upward direction. Easing world prices for skim milk powder and casein were the major drivers of the fall in the dairy product manufacturing index.

On an annual basis, the overall PPI outputs index rose 4.8 percent in the year to the September 2006 quarter. This follows rises of 4.1 percent in the year to the September 2005 quarter, and 2.4 percent in the year to the September 2004 quarter.

Producers Price Index

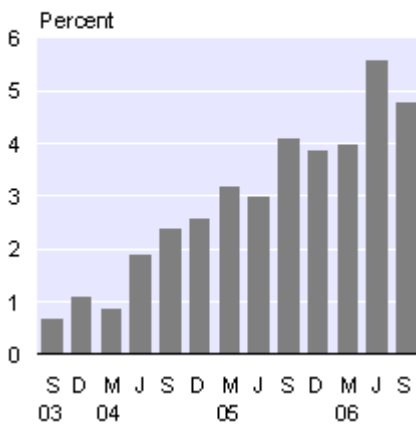
Outputs index – selected industries

Base: December 1997 quarter (=1000)



PPI Outputs

Annual percentage change



Producers Price Index

Outputs – all industries

| Quarter | Percentage change from previous quarter | Percentage change from same quarter, previous year |
|----------|---|--|
| Sep 2004 | 0.8 | 2.4 |
| Dec 2004 | 0.5 | 2.6 |
| Mar 2005 | 0.5 | 3.2 |
| Jun 2005 | 1.2 | 3.0 |
| Sep 2005 | 1.8 | 4.1 |
| Dec 2005 | 0.3 | 3.9 |
| Mar 2006 | 0.7 | 4.0 |
| Jun 2006 | 2.7 | 5.6 |
| Sep 2006 | 1.0 | 4.8 |

Inputs

Input prices for all industries in the PPI rose 2.0 percent in the September 2006 quarter following rises of 2.7 percent and 0.9 percent in the June 2006 and March 2006 quarters, respectively. The September 2006 quarter is the tenth consecutive quarter where the inputs index has risen.

For the second quarter in a row, the wholesale trade index (up 3.6 percent) provided the most significant upward contribution to the overall rise in input prices. This quarter's increase follows rises of 7.5 percent in the June 2006 quarter and 0.7 percent in the March 2006 quarter. This is the tenth consecutive quarterly rise for the wholesale trade index and was mainly driven by higher prices for crude oil in the mineral, metal and chemical wholesaling sector. In the year to the September 2006 quarter, the wholesale trade index rose 15.1 percent.

The meat and meat product manufacturing index rose 12.6 percent and was the second-largest positive contributor to the inputs index in the September 2006 quarter. This is the largest quarterly rise in the index since the series began in the June 1994 quarter and follows a rise of 4.1 percent in the June 2006 quarter and a fall of 10.2 percent in the March 2006 quarter. Respondents cited increased wholesale prices for livestock, especially bulls, steers and lambs as the reason for the increase this quarter.

Another significant upward contributor to the inputs index in the September 2006 quarter was the construction index (up 4.3 percent). The rise was mainly driven by the construction trade services index which increased 8.1 percent due to increasing raw material prices, especially for copper. This is the third quarter in a row where the construction index has been one of the top three positive contributors to the overall rise in input prices. It is also the largest quarterly increase in the index since the 4.3 percent rise recorded in the December 2000 quarter.

The overall rise in input prices was partly offset by a 13.2 percent fall in the electricity generation and supply index, the only significant downward contributor in the September 2006 quarter. The fall is the second consecutive decrease in the index, and the largest since the index fell 15.3 percent in the September 2002 quarter. Lower costs associated with electricity generation, due to increased lake levels, were the main reason behind the fall. This quarter's decrease, combined with a 10.5 percent fall in the June 2006 quarter, has resulted in the electricity generation and supply index falling 5.9 percent in the year to the September 2006 quarter – the first annual decrease since a 15.7 percent fall in the year to the March 2005 quarter.

In the year to the September 2006 quarter, the PPI inputs index rose 6.9 percent. This follows rises of 6.1 percent in the year to the September 2005 quarter, and 2.5 percent in the year to the September 2004 quarter.

Commodities

In the September 2006 quarter, all three of the selected livestock commodity indexes recorded increases driven mainly by favourable wholesale or farmgate prices for livestock.

The largest increase was recorded in the livestock: cattle index, which rose 13.6 percent, following an increase of 6.6 percent in the June 2006 quarter. The main driver of the latest rise was increasing farmgate prices for prime beef, especially steers and bulls.

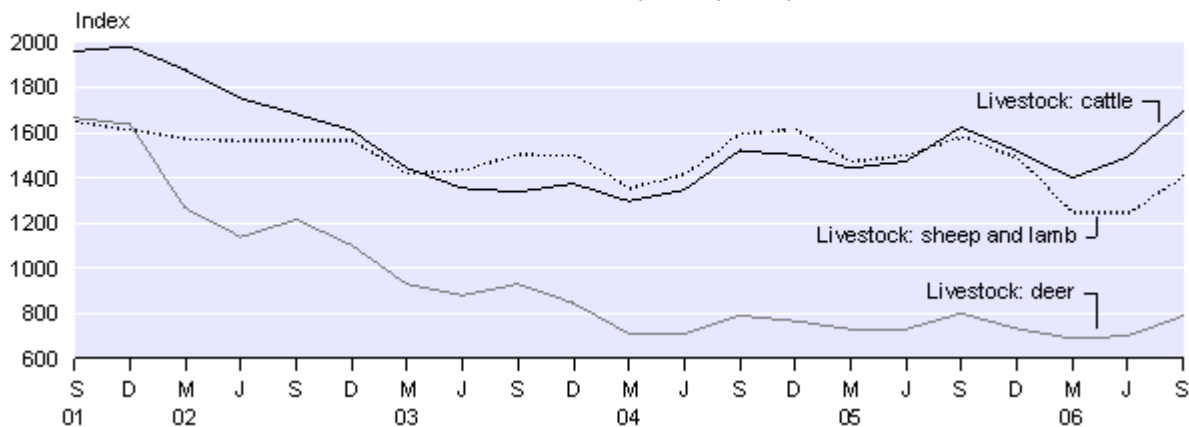
The livestock: sheep and lamb index rose 13.3 percent in the September 2006 quarter, with rising wholesale prices for lambs cited as the main driver behind the increase. Despite the rise in the index this quarter, the livestock: sheep and lamb index fell 10.8 percent in the year to the September 2006 quarter, in part due to no movement in the June 2006 quarter and consecutive falls of 16.3 percent and 6.0 percent in the March 2006 and December 2005 quarters, respectively.

The livestock: deer index increased 12.7 percent in the September 2006 quarter, following a rise of 1.6 percent in the June 2006 quarter. Respondents commonly cited increased prices at the farm gate for prime deer (hinds and stags) as the main reason for the rise this quarter. On an annual basis, the livestock: deer index recorded a fall of 1.4 percent in the year to the September 2006 quarter. This was due to the rises of 12.7 percent and 1.6 percent in the September 2006 and June 2006 quarters not being significant enough to offset falls of 5.9 percent in the March 2006 quarter and 8.5 percent in the December 2005 quarter.

Selected Commodity Indexes

Livestock: cattle; livestock: sheep and lamb; livestock: deer

Base: December 1997 quarter (=1000)



The electricity: commercial consumers index (down 6.8 percent) recorded the largest fall of all the selected commodity indexes in the September 2006 quarter. This fall follows a rise of 11.3 percent in the June 2006 quarter and is the largest fall in the index since the series began in the June 1994 quarter. The main driver behind the fall this quarter was lower prices for wholesale electricity. From the September 2005 to the September 2006 quarters the electricity: commercial consumers index rose 6.8 percent, compared with annual increases of 10.7 percent in the year to the September 2005 quarter and 9.5 percent in the year to the September 2004 quarter.

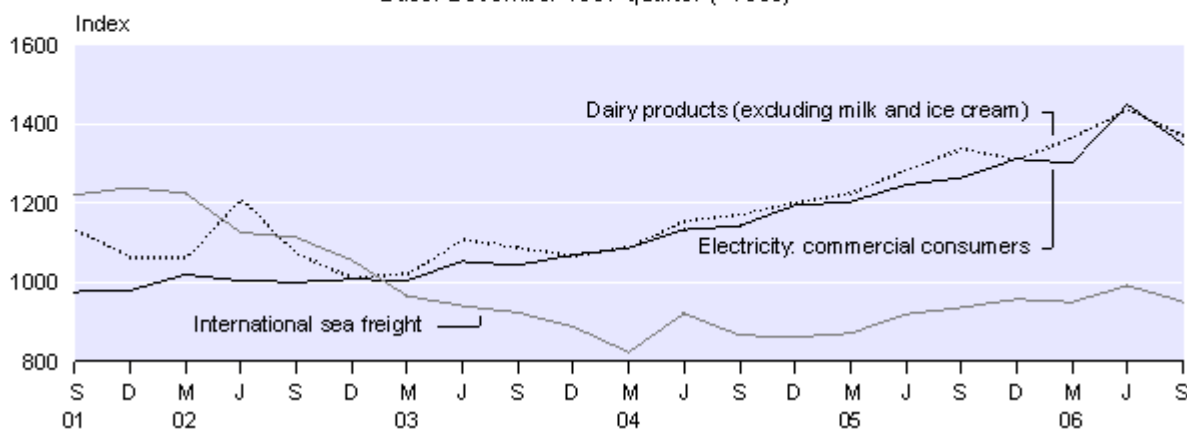
In the September 2006 quarter, the index for dairy products (excluding milk and ice cream) fell 4.7 percent, following quarterly rises of 5.2 percent in the June 2006 quarter and 4.3 percent in the March 2006 quarter. The fall in the current quarter is the largest decrease in the index since a fall of 5.9 percent in the December 2002 quarter and was mainly driven by lower prices for whole milk powder and casein. In the year to the September 2006 quarter, the index for dairy products (excluding milk and ice cream) rose 2.4 percent, the lowest annual increase since an increase of 1.3 percent in the year to the September 2003 quarter.

The international sea freight index decreased 4.0 percent in the September 2006 quarter, following a rise of 4.3 percent in the June 2006 quarter. This was the largest fall since a decrease of 6.0 percent in the September 2004 quarter. Respondents cited increased competition and adjustments to profit margins as reasons for the fall this quarter. The index for international sea freight rose 1.6 percent in the year to the September 2006 quarter despite the latest quarterly fall. This was due to falls in the September 2006 and March 2006 quarters only partly offsetting rises in the June 2006 and December 2005 quarters.

Selected Commodity Indexes

Electricity: commercial consumers; dairy products (excluding milk and ice cream); international sea freight

Base: December 1997 quarter (=1000)



Impact of exchange rates

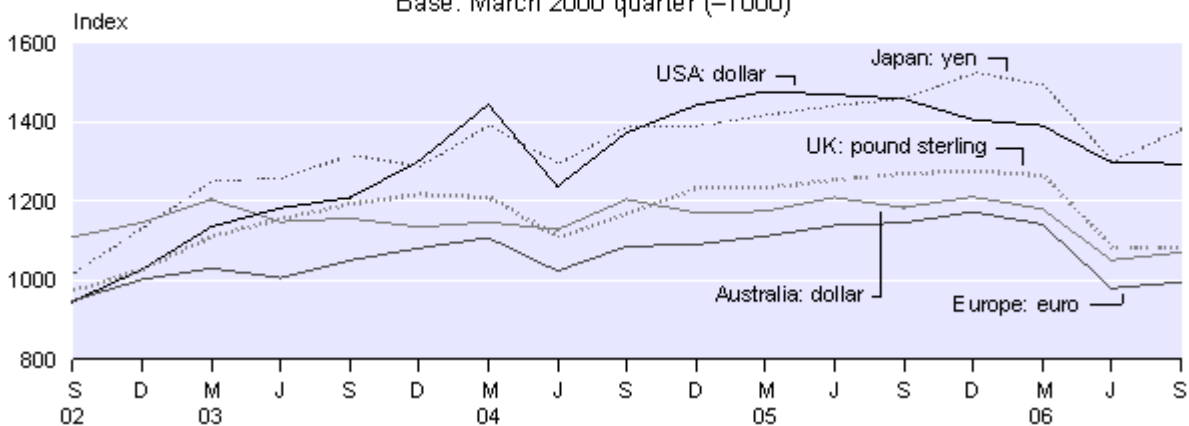
When calculating the PPI, prices collected on the fifteenth day of the middle month in the quarter are generally used to represent the entire quarter. Prices collected for imported goods are often denominated in foreign currencies. These are converted to New Zealand dollars using the exchange rate at the time of pricing.

The New Zealand dollar depreciated against the US dollar and appreciated against the currencies of the country's other four major trading partners in the September 2006 quarter. The table below shows changes in the value of the New Zealand dollar in foreign currency denominations from the June 2006 quarter to the September 2006 quarter.

Exchange Rates
(Published by Westpac Bank)
Bank selling rates for NZ\$1.00

| | USA (NZ\$:US\$) | UK (NZ\$:pound sterling) | Australia (NZ\$:AUS\$) | Japan (NZ\$:yen) | Europe (NZ\$:euro) |
|-------------------|--------------------|-----------------------------|---------------------------|---------------------|-----------------------|
| 15 May 2006 | 0.6247 | 0.3302 | 0.8077 | 68.2160 | 0.4818 |
| 15 August 2006 | 0.6236 | 0.3305 | 0.8225 | 72.4890 | 0.4892 |
| Percentage change | -0.2 | 0.1 | 1.8 | 6.3 | 1.5 |

Producers Price Index
Index of exchange rates
Base: March 2000 quarter (=1000)



For technical information contact:
Nicola Argyle or Philip Anderson
Wellington 04 931 4600
Email: info@stats.govt.nz

Price index developments

Statistics New Zealand is working on a progressive redevelopment of the Producers Price Index. This involves re-evaluation of the items that are priced within the indexes, and also the relative weights that are applied to them. This work began in 2004, and the first of the redeveloped published series took effect in the June 2006 quarter. Further redevelopments are introduced this quarter.

Series references and previous quarters' index numbers will remain unchanged, but the movements recorded from this quarter onwards will include this new data.

At this stage, the redevelopment applies only to output indexes, with redeveloped input indexes to be finalised once all of the output indexes have been redeveloped.

The redevelopment is based on the Annual Enterprise Survey and information obtained from companies involved in the industry.

The following output indexes are affected by redevelopments taking effect in the current quarter. More information can be found in the Technical notes of this release.

| ANZIND reference | Description |
|------------------|--|
| A06 | Forestry and logging |
| C01 | Meat and meat product manufacturing |
| C02 | Dairy product manufacturing |
| C04 C05 | Tobacco, beverage and malt manufacturing |
| C07 | Wood product manufacturing |
| C16 | Machinery and equipment manufacturing |
| E | Construction (residential and non-residential) |
| I04 | Air transport |

The following output indexes will be affected by redevelopments taking place in the next quarter:

| ANZIND reference | Description |
|------------------|-----------------------------|
| C03 | Other food manufacturing |
| I02 | Rail transport |
| J011 | Postal and courier services |

For further information, please contact Patricia Jennings on 04 931 4600 or info@stats.govt.nz.

Technical notes

Price index interpretation

Price indexes are used to measure the changes in the level of prices, not the actual level of the prices themselves. The Producers Price Index (PPI) measures prices relating to the production sector of the economy. By comparison, the Consumers Price Index measures prices relating to the household sector and the Labour Cost Index measures prices in the labour market.

The PPI is made up of two types of indexes: the outputs index, which measures changes in the prices received by producers; and the inputs index, which measures changes in the cost of production (excluding labour and capital costs). The Farm Expenses Price Index (FEPI) measures price changes specific to the inputs into the farming industry.

PPI outputs index

The outputs index measures changes in prices received by producers.

The outputs index covers the prices of:

- primary products
- manufactured goods
- revenue from renting and leasing
- the provision of services
- capital work undertaken by own employees
- margins on goods purchased for resale.

The outputs index excludes:

- interest and dividends
- royalties and patent fees
- receipts from insurance claims
- government cash grants and subsidies
- goods and services tax (GST) and other indirect taxes.

These indexes are designed to measure price changes at a level corresponding to the prices received before the addition of commodity taxes or deduction of subsidies.

PPI inputs index

The inputs index measures price changes in costs of production, excluding labour and depreciation costs.

The inputs index covers the prices of:

- materials
- fuels and electricity
- transport and communication
- commission and contract services
- rent and lease of land, buildings, vehicles and plant
- business services
- insurance premiums less claims.

The inputs index excludes:

- wages and salaries (measured in the Labour Cost Index)
- capital expenditure/depreciation (measured in the Capital Goods Price Index)
- ACC levies, land tax, government licence fees, road user charges
- rates
- royalties, patent fees
- bad debts and donations.

GST is excluded when measuring input prices for 45 of the 47 industry inputs indexes. The assumption is made that those involved in activities in these industries are 'registered persons, or businesses' who provide 'taxable supply'. GST paid on intermediate consumption is recoverable under the GST credit offset system and therefore is effectively not part of the ultimate input price. Exceptions include the finance and ownership of owner-occupied dwellings indexes, which include some 'GST exempt' and non-recoverable GST activities. Interest costs are excluded because they are regarded as a cost of capital and not as a payment for a good or service.

Government charges are excluded when they are used to raise tax revenue rather than the payment for a good or service purchased from the government. This is consistent with the System of National Accounts.

Farm Expenses Price Index

The FEPI measures price changes of fixed inputs of goods and services to the farming industry. It does not fully measure changes in the production costs of farming. This is because production costs are not solely dependent on price movements, but are also dependent on factors that affect productivity, such as technological advances, management efficiency and climate fluctuations.

Capital expenditure and depreciation are not covered. (For price indexes of capital expenditure, refer to the Capital Goods Price Index.)

Coverage

The indexes are calculated quarterly from price quotes, which are collected mainly by postal survey. Approximately 13,000 individual commodity items are surveyed from about 3,000 respondents. Prices are generally collected each quarter, according to those prevailing on the fifteenth of the middle month of the quarter being measured. Prices may be obtained monthly or annually, depending on the nature of the item.

Calculation

The PPI and FEPI are Laspeyres base-weighted price index series. The weightings are determined by the relative importance of commodities and businesses within the industry or industry group. Information from various surveys and censuses and other sources is used to determine the weightings. Further information about this is available on request.

Industry classification

The PPI inputs and outputs indexes cover all the major market industry groups as defined by the Australian and New Zealand Standard Industrial Classification 1993 (ANZSIC). Index numbers for industry indexes based on this classification are available from the June 1994 quarter.

The all industries inputs index is made up of 47 industry indexes. Outputs indexes are not available for public administration and defence; education; health and community services;

cultural and recreational services; and personal and other services industries, as reliable estimates of output prices have yet to be developed.

Customised price indexes

Statistics NZ has a large number of unpublished sub-industry and representative commodity price indexes. These indexes are available at a small charge to cover dissemination costs.

Back series of indexes

Statistics NZ will provide tables of the complete back series of the current PPI and FEPI indexes on request.

Price index developments

The following is a detailed analysis of the output indexes affected by redevelopments taking place in the current quarter.

Forestry and logging

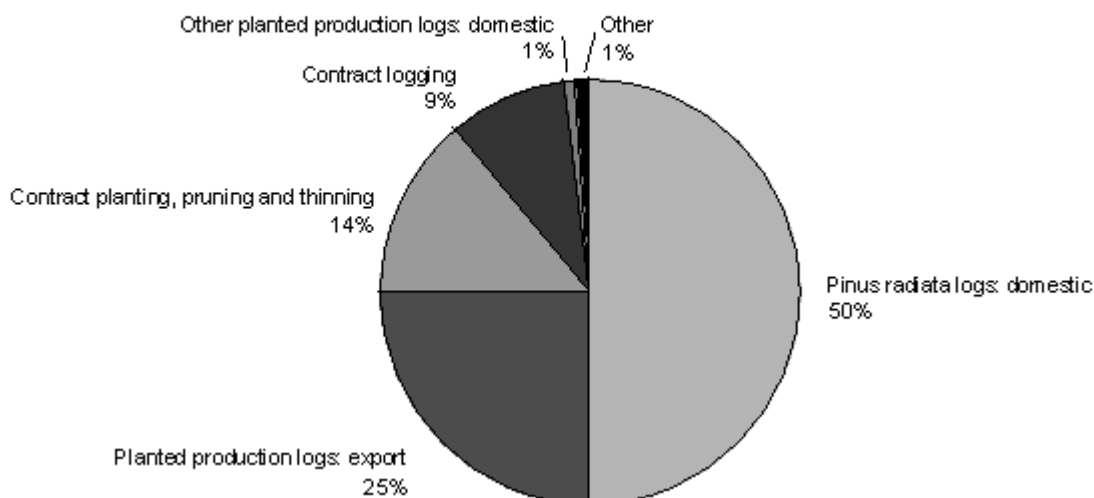
The PPI for the forestry and logging industry has been redeveloped, and takes effect from the September 2006 quarter. The indexes in this publication that are affected by the changes are as follows:

- PPIQ.SUA06 – Forestry and Logging
- PPIQ.SC05 – Logs for Domestic Market
- PPIQ.SC06 – Logs for Export Market

The most significant change since the industry was last redeveloped in 1997 has been the removal from the index of the growing tree stocks commodity. Usual industry practice is now that the forest owner contracts a logging company to cut down the trees, rather than selling standing timber. This has also resulted in a significant increase in the weighting of the domestic pinus radiata logs commodity.

Output Commodity Weights for the Forestry and Logging Industry

At 30 June 2006



Note: Percentages may not sum to 100 due to rounding.

The 'other' group includes commodities such as forest nursery operation; and sphagnum moss gathering. More information is available on request.

Meat and meat product manufacturing

The PPI for the meat and meat product manufacturing industry has been redeveloped, and takes effect from the September 2006 quarter. The indexes in this publication that are affected by the changes are as follows:

PPIQ.SUC01 – Meat and Meat Product Manufacturing Gross Outputs

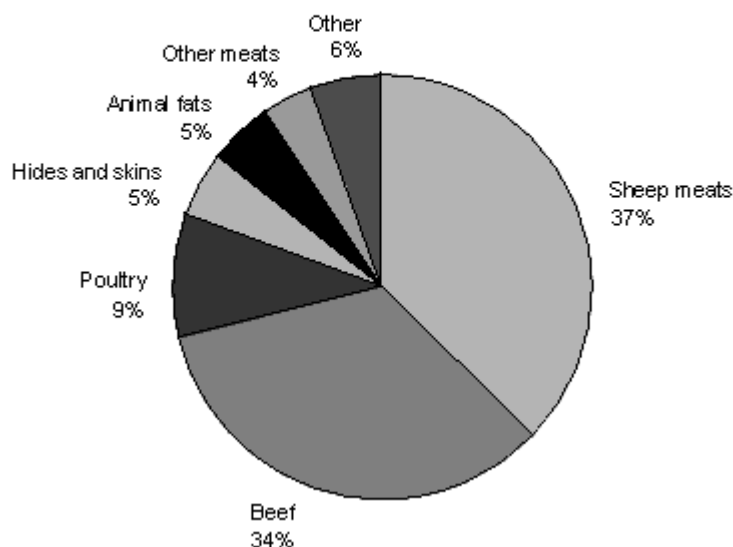
PPIQ.SC07 – Processed Meat: Beef

PPIQ.SC08 – Processed Meat: Sheep and Lamb

The most significant change since the industry was last redeveloped in 1997 has been the increase in output of poultry products relative to other meat production.

Output Commodity Weights for the Meat and Meat Product Manufacturing Industry

At 30 June 2006



Note: Percentages may not sum to 100 due to rounding.

The 'other' group includes commodities such as sales of animal feed; and sales of bacon, ham and smallgoods. More information is available on request.

Dairy product manufacturing

The PPI for the dairy product manufacturing industry has been redeveloped, and takes effect from the September 2006 quarter. The indexes in this publication that are affected by the changes are as follows:

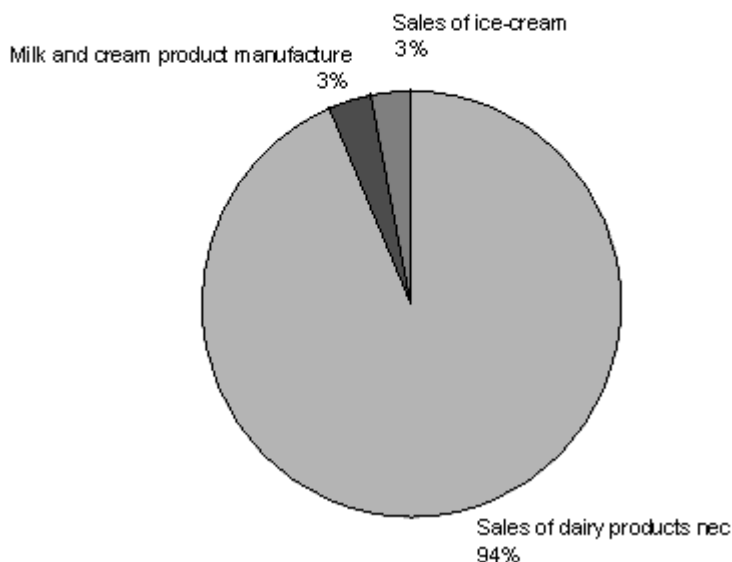
PPIQ.SUC02 – Dairy Product Manufacturing Gross Outputs

PPIQ.SC09 – Dairy Products (Excl. Milk & Ice Cream)

There has been significant change since the industry was last redeveloped in 1997, with the dissolution of the New Zealand Dairy Board and the creation of Fonterra. These changes have caused a lot of vertical integration in the industry now, which has caused a decrease in intermediate production goods. Additionally, new export markets and innovation in value-added dairy products have changed the face of the industry.

Output Commodity Weights for the Dairy Product Manufacturing Industry

At 30 June 2006



Note: Percentages may not sum to 100 due to rounding.

Beverage and tobacco manufacturing

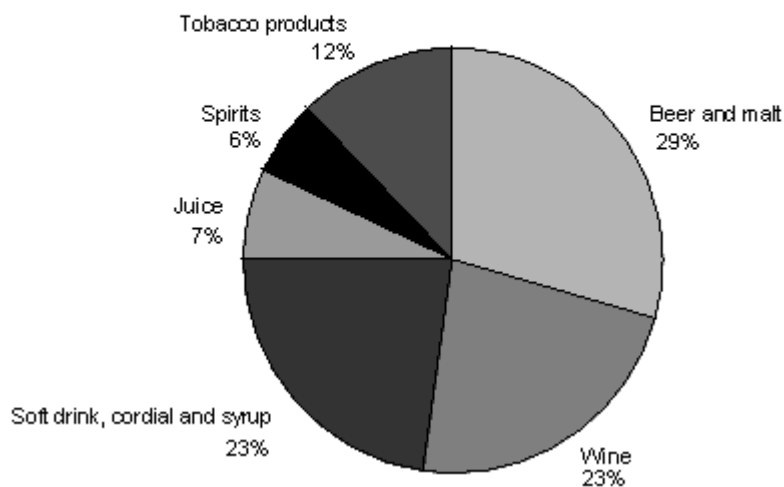
The PPI for the beverage and tobacco manufacturing industry has been redeveloped, and takes effect from the September 2006 quarter. The index in this publication that is affected by the change is as follows:

PPIQ.SUC04 – Tobacco, Beverage and Malt Manufacturing

The most significant change since the industry was last redeveloped in 1997 has been the expansion of the energy drink, bottled water, and juice industries, at the expense of other beverage products, specifically beer.

Output Commodity Weights for the Beverage and Tobacco Manufacturing Industry

At 30 June 2006



Note: Percentages may not sum to 100 due to rounding.

Wood product manufacturing

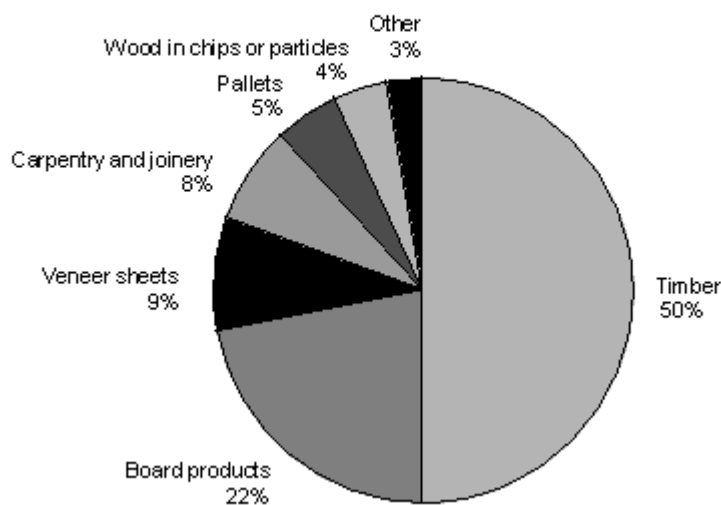
The PPI for the wood product manufacturing industry has been redeveloped, and takes effect from the September 2006 quarter. The index in this publication that is affected by the change is as follows:

PPIQ.SUC07 – Wood product manufacturing

The most significant change since the industry was last redeveloped in 1997 has been the decrease in output of boards and panels. The decreased usage of boards and panels in the residential building construction industry has been the main contributing factor to this.

Output Commodity Weights for the Wood Product Manufacturing Industry

At 30 June 2006



Note: Percentages may not sum to 100 due to rounding.

The 'other' group includes commodities such as services to wood product manufacturing; and miscellaneous articles. More information is available on request.

Machinery and equipment manufacturing

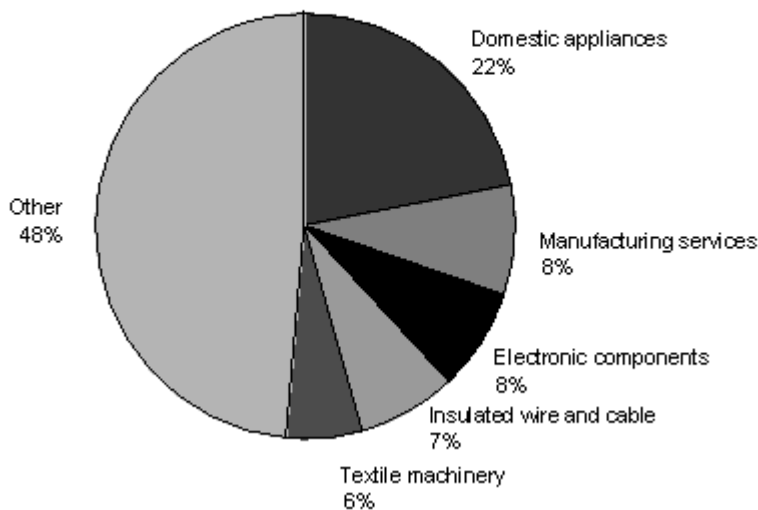
The PPI for the machinery and equipment product manufacturing industry has been redeveloped, and takes effect from the September 2006 quarter. The index in this publication that is affected by the change is as follows:

PPIQ.SUC16 – Machinery and Equipment Manufacturing

The most significant changes since the industry was last redeveloped in 1997 have been the increases in output of the photographic and scientific equipment and electrical and electronic equipment manufacturing industries.

Output Commodity Weights for the Machinery and Equipment Manufacturing Industry

At 30 June 2006



Note: Percentages may not sum to 100 due to rounding.

The 'other' group includes commodities such as textile machinery; medical and surgical equipment; measuring and testing equipment; agriculture or forestry machinery; and computing machinery. More information is available on request.

Residential construction

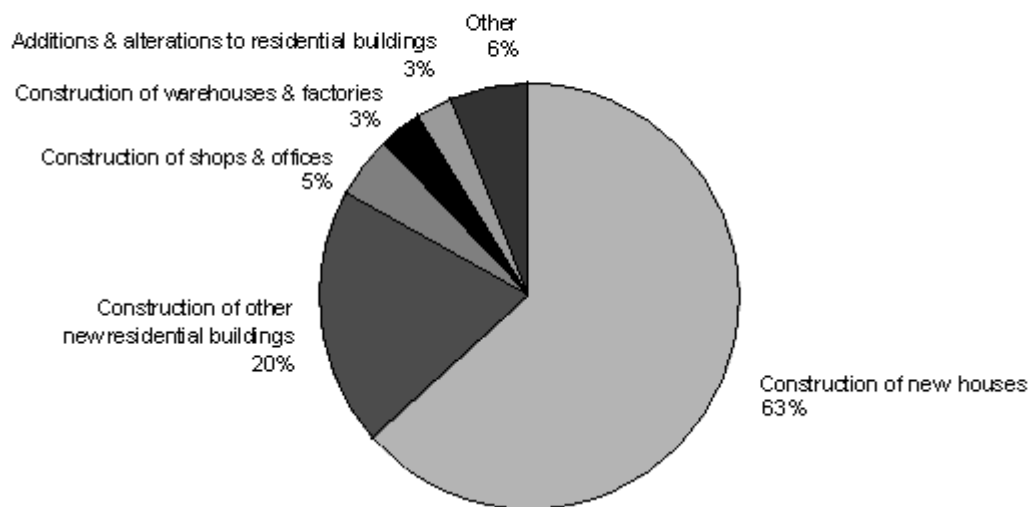
The PPI for the residential construction industry has been redeveloped, and takes effect from the September 2006 quarter. The index in this publication that is affected by the change is as follows:

PPIQ.SUE – Construction

The most significant change since the industry was last redeveloped in 1997 has been the increase in other new residential buildings, which mostly represents apartments. This is because over the last 10 years there has been a large increase in demand for apartments.

Output Commodity Weights for the Residential Construction Industry

At 30 June 2006



Note: Percentages may not sum to 100 due to rounding.

The 'other' group includes commodities such as repairs & maintenance to residential buildings; construction of health and educational buildings; construction of accommodation buildings; and construction of farm buildings.

Non-residential construction

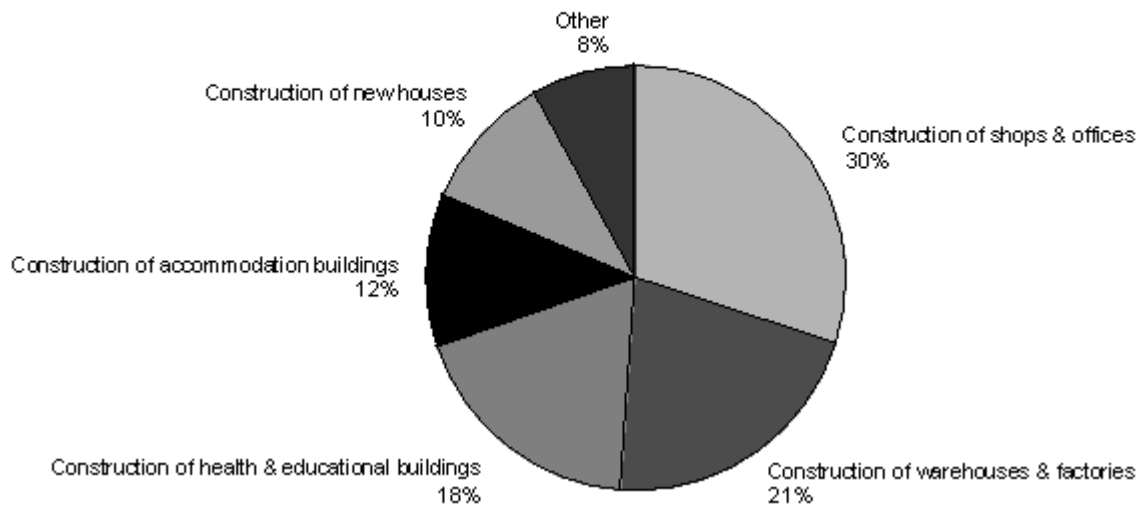
The PPI for the non-residential construction industry has been redeveloped, and takes effect from the September 2006 quarter. The index in this publication that is affected by the change is as follows:

PPIQ.SUE – Construction

The most significant changes since the industry was last redeveloped in 1997 have been the proportional increase in warehouses and factories being built, a decrease in proportion of shops and offices being built, and an increase in the construction of apartments done by firms in this industry.

Output Commodity Weights for the Non-residential Construction Industry

At 30 June 2006



Note: Percentages may not sum to 100 due to rounding.

The 'other' group includes commodities such as construction of farm buildings; construction of other new residential buildings; additions & alterations to residential buildings; and repairs & maintenance to residential buildings.

Air transport

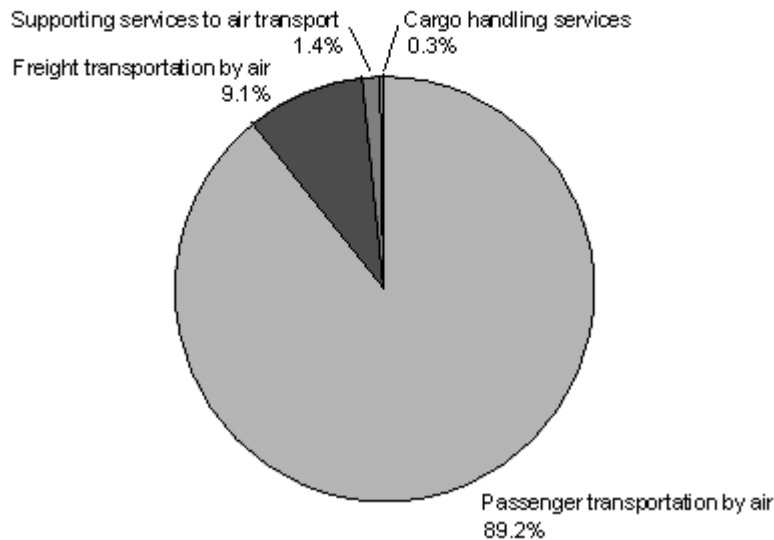
The PPI for the air transport industry has been redeveloped, and takes effect from the September 2006 quarter. The index in this publication that is affected by the change is as follows:

PPIQ.SUI04- Air Transport

There have been no significant changes in the outputs of this industry since the previous redevelopment in 1997.

Output Commodity Weights for the Air Transport Industry

At 30 June 2006



Note: Percentages may not sum to 100 due to rounding.

More information

For more information, follow the [link](#) from the Technical notes of this release on the Statistics New Zealand website.

Copyright

Information obtained from Statistics NZ may be freely used, reproduced, or quoted unless otherwise specified. In all cases Statistics NZ must be acknowledged as the source.

Liability

While care has been used in processing, analysing and extracting information, Statistics NZ gives no warranty that the information supplied is free from error. Statistics NZ shall not be liable for any loss suffered through the use, directly or indirectly, of any information, product or service.

Timing

Timed statistical releases are delivered using postal and electronic services provided by third parties. Delivery of these releases may be delayed by circumstances outside the control of Statistics NZ. Statistics NZ accepts no responsibility for any such delays.

Next release ...

Producers Price Index: December 2006 quarter will be released on 14 February 2006.

Statistics New Zealand: The first source of independent information for your key decisions.

Erratum

Revision to the Producers Price Index

Corrections have been made to the Producers Price Index (PPI) for the March 2007 quarter, December 2006 quarter and the September 2006 quarter. The error was due to incorrect calculation of price movements from the June 2006 quarter to the September 2006 quarter, which occurred while introducing new methodology.

The erratum affects the following indexes:

- PPI all industries outputs index
- electricity, gas and water outputs index
- electricity generation and supply outputs index.

The impact on the PPI all industries outputs index resulted in movements of 4–5 index points for each of the three revised quarters. However, the revision had greater impact on the electricity generation and supply index, and the electricity, gas and water index. The table below summarises the differences between what was originally published and the figures after revision.

| Revision to the Producers Price Index | | | | |
|--|--------|--|--|-----------------------|
| | | Outputs – index numbers Base: December 1997 Quarter (=1000) | | |
| | | Electricity, gas and water | Electricity generation and supply | All industries |
| <i>Series ref: PPIQ</i> | | <i>SUD</i> | <i>SUD01</i> | <i>SU9</i> |
| Previously published figures | | | | |
| Quarter | Sep 06 | 1363 | 1332 | 1261 |
| | Dec 06 | 1304 | 1255 | 1255 |
| | Mar 07 | 1270 | 1216 | 1252 |
| After revision | | | | |
| Quarter | Sep 06 | 1482 | 1469 | 1265 |
| | Dec 06 | 1423 | 1391 | 1259 |
| | Mar 07 | 1390 | 1353 | 1257 |

In the normal course of business, minor revisions are shown as a correction to the index levels in the following quarter. However, since the lower published-level indexes are significantly affected, along with a smaller effect on the published all industries index, this correction has been made promptly.

The PPI input indexes and the Consumers Price Index were not affected by the error in the electricity generation and supply index. The New Zealand Energy Statistics and Gross Domestic Product statistics are also unaffected by the error, due to different methodologies and, in some cases, data sources.

Statistics New Zealand apologises for any disruption this error causes to the wide range of users of the all industries PPI.

The Tables, Highlights and Commentary sections have been changed to reflect these revisions.

Geoff Bascand
Government Statistician

Tables

The following tables can be downloaded from the Statistics New Zealand website in Excel 97 format. If you do not have access to Excel 97 or higher, you may use the [Excel file viewer](#) to view, print and export the contents of the file.

List of tables

Producers Price Index

1. Producers Price Index, outputs – index numbers
2. Producers Price Index, inputs – index numbers
3. Producers Price Index, outputs, percentage change from previous quarter
4. Producers Price Index, inputs, percentage change from previous quarter
5. Producers Price Index, outputs – selected industries
6. Producers Price Index, inputs – selected industries
7. Producers Price Index, selected commodities – index numbers and percentage changes

Farm Expenses Price Index

- 1.01. Farm Expenses Price Index, all farms – index numbers
- 1.02. Farm Expenses Price Index, all farms, percentage change from previous quarter
- 1.03. Farm Expenses Price Index, all farms, percentage change from same quarter of the previous year
2. Farm Expenses Price Index, sheep and beef farms – index numbers
3. Farm Expenses Price Index, dairy farms – index numbers
4. Farm Expenses Price Index, horticultural farms – index numbers
5. Farm Expenses Price Index, cropping and other farms – index numbers

Producers Price Index: September 2006 quarter

Table 1

Producers Price Index
Outputs – index numbers
 Base: December 1997 quarter (=1000)

| Industry group | Series ref: PPIQ | Quarter | | | | | | | | | |
|----------------|---|--------------|------|------|------|------|------|------|------|------|--------|
| | | 2004 | | 2005 | | | | 2006 | | | |
| | | Sep | Dec | Mar | Jun | Sep | Dec | Mar | Jun | Sep | |
| A | Agriculture, forestry and fishing | <i>SUA</i> | 1210 | 1204 | 1172 | 1180 | 1214 | 1192 | 1140 | 1180 | 1265 |
| A01 | Horticulture and fruit growing | <i>SUA01</i> | 1304 | 1336 | 1268 | 1258 | 1285 | 1318 | 1242 | 1342 | 1486 |
| A02 | Livestock and cropping farming | <i>SUA02</i> | 1409 | 1394 | 1316 | 1336 | 1412 | 1339 | 1214 | 1257 | 1386 |
| A03 | Dairy cattle farming | <i>SUA03</i> | 1143 | 1140 | 1130 | 1138 | 1162 | 1147 | 1128 | 1142 | 1220 |
| A04 | Other farming | <i>SUA04</i> | 1106 | 1128 | 1108 | 1107 | 1116 | 1122 | 1074 | 1088 | 1151 |
| A05 | Services to ag, hunting and trapping | <i>SUA05</i> | 1243 | 1257 | 1262 | 1272 | 1297 | 1321 | 1340 | 1357 | 1380 |
| A06 | Forestry and logging | <i>SUA06</i> | 915 | 874 | 904 | 905 | 897 | 895 | 913 | 947 | 969 |
| A07 | Fishing | <i>SUA07</i> | 1201 | 1217 | 1197 | 1209 | 1232 | 1221 | 1218 | 1267 | 1285 |
| B | Mining | <i>SUB</i> | 1381 | 1463 | 1441 | 1547 | 1606 | 1729 | 1764 | 2049 | 2040 |
| C | Manufacturing | <i>SUC</i> | 1163 | 1165 | 1180 | 1193 | 1208 | 1201 | 1213 | 1258 | 1265 |
| C01 | Meat and meat product mfg | <i>SUC01</i> | 1260 | 1218 | 1252 | 1251 | 1274 | 1181 | 1195 | 1233 | 1291 |
| C02 | Dairy product mfg | <i>SUC02</i> | 1183 | 1208 | 1233 | 1284 | 1331 | 1310 | 1358 | 1421 | 1358 |
| C03 | Other food mfg | <i>SUC03</i> | 1189 | 1188 | 1194 | 1190 | 1197 | 1217 | 1223 | 1240 | 1252 |
| C04 C05 | Tobacco, beverage and malt mfg ⁽¹⁾ | <i>SUC04</i> | 1279 | 1287 | 1301 | 1303 | 1329 | 1328 | 1332 | 1342 | 1348 |
| C06 | Textile and apparel mfg | <i>SUC06</i> | 1082 | 1068 | 1057 | 1054 | 1053 | 1034 | 1035 | 1058 | 1054 |
| C07 | Wood product mfg | <i>SUC07</i> | 1038 | 1041 | 1042 | 1062 | 1064 | 1079 | 1096 | 1113 | 1122 |
| C08 | Paper and paper product mfg | <i>SUC08</i> | 1077 | 1062 | 1060 | 1061 | 1055 | 1066 | 1061 | 1128 | 1146 |
| C09 | Printing, publishing and recorded media | <i>SUC09</i> | 1268 | 1271 | 1287 | 1299 | 1308 | 1310 | 1314 | 1318 | 1324 |
| C10 | Petroleum, coal and basic chemical mfg | <i>SUC10</i> | 1224 | 1233 | 1215 | 1247 | 1296 | 1335 | 1260 | 1476 | 1426 |
| C11 | Rubber plastics and other chemical mfg | <i>SUC11</i> | 1118 | 1143 | 1152 | 1165 | 1170 | 1159 | 1165 | 1170 | 1189 |
| C12 | Non-metallic mineral product mfg | <i>SUC12</i> | 1124 | 1134 | 1172 | 1179 | 1193 | 1201 | 1213 | 1218 | 1223 |
| C13 | Basic metal mfg | <i>SUC13</i> | 1090 | 1098 | 1248 | 1205 | 1213 | 1199 | 1222 | 1305 | 1339 |
| C14 | Sheet and fabricated metal product mfg | <i>SUC14</i> | 1101 | 1114 | 1129 | 1163 | 1189 | 1196 | 1203 | 1203 | 1267 |
| C15 | Transport equipment mfg | <i>SUC15</i> | 1102 | 1106 | 1113 | 1123 | 1125 | 1120 | 1138 | 1197 | 1210 |
| C16 | Machinery and equipment mfg | <i>SUC16</i> | 1194 | 1210 | 1209 | 1232 | 1236 | 1251 | 1300 | 1394 | 1396 |
| C17 | Other manufacturing | <i>SUC17</i> | 1147 | 1149 | 1155 | 1169 | 1171 | 1175 | 1183 | 1195 | 1210 |
| D | Electricity, gas and water⁽²⁾ | <i>SUD</i> | 1151 | 1172 | 1209 | 1262 | 1365 | 1474 | 1561 | 1551 | 1482 R |
| D01 | Electricity generation and supply | <i>SUD01</i> | 1129 | 1148 | 1179 | 1242 | 1360 | 1480 | 1570 | 1556 | 1469 R |
| D02 | Gas supply | <i>SUD02</i> | 1393 | 1457 | 1579 | 1559 | 1545 | 1595 | 1696 | 1738 | 1816 |
| E | Construction⁽³⁾ | <i>SUE</i> | 1203 | 1216 | 1229 | 1248 | 1272 | 1287 | 1305 | 1319 | 1350 |
| F | Wholesale trade⁽³⁾ | <i>SUF</i> | 1169 | 1172 | 1174 | 1195 | 1230 | 1219 | 1238 | 1307 | 1315 |
| G | Retail trade⁽³⁾ | <i>SUG</i> | 1120 | 1124 | 1129 | 1136 | 1149 | 1149 | 1157 | 1177 | 1181 |
| H | Accommodation, cafes and restaurants⁽³⁾ | <i>SUH</i> | 1165 | 1180 | 1192 | 1186 | 1197 | 1212 | 1223 | 1223 | 1241 |
| I | Transport and storage | <i>SUI</i> | 1152 | 1161 | 1163 | 1172 | 1193 | 1198 | 1209 | 1261 | 1276 |
| I01 | Road transport | <i>SUI01</i> | 1157 | 1169 | 1179 | 1190 | 1207 | 1227 | 1251 | 1273 | 1289 |
| I03 | Water transport | <i>SUI03</i> | 1035 | 1009 | 1013 | 1044 | 1073 | 1073 | 1126 | 1143 | 1141 |
| I04 | Air transport | <i>SUI04</i> | 1160 | 1173 | 1169 | 1181 | 1210 | 1201 | 1202 | 1308 | 1302 |
| I02 I09 | Rail, other transport and storage services ⁽⁴⁾ | <i>SUI09</i> | 1155 | 1162 | 1161 | 1162 | 1176 | 1182 | 1184 | 1211 | 1255 |
| J | Communication services⁽³⁾ | <i>SUJ</i> | 884 | 888 | 886 | 886 | 904 | 906 | 912 | 918 | 923 |

For footnotes, see end of table.

Producers Price Index: September 2006 quarter

Table 1
continued

Producers Price Index
Outputs – index numbers
Base: December 1997 quarter (=1000)

| Industry group | Series ref: PPIQ | Quarter | | | | | | | | |
|---|------------------------|---------|------|------|------|------|------|------|------|--------|
| | | 2004 | | 2005 | | | | 2006 | | |
| | | Sep | Dec | Mar | Jun | Sep | Dec | Mar | Jun | Sep |
| K Finance and insurance | <i>SUK</i> | 1211 | 1215 | 1210 | 1198 | 1199 | 1205 | 1187 | 1191 | 1192 |
| K01 Finance | <i>SUK01</i> | 1207 | 1199 | 1187 | 1162 | 1158 | 1168 | 1132 | 1136 | 1136 |
| K02 Insurance | <i>SUK02</i> | 1181 | 1190 | 1187 | 1197 | 1192 | 1192 | 1198 | 1190 | 1200 |
| K03 Services to finance and insurance | <i>SUK03</i> | 1300 | 1357 | 1380 | 1384 | 1430 | 1420 | 1451 | 1476 | 1467 |
| L Property and business services | <i>SUL</i> | 1136 | 1142 | 1152 | 1166 | 1175 | 1179 | 1188 | 1197 | 1202 |
| L01 Real estate | <i>SUL01</i> | 1125 | 1130 | 1142 | 1161 | 1179 | 1187 | 1198 | 1211 | 1216 |
| L02 Ownership of owner-occupied dwellings | <i>SUL02</i> | 1100 | 1104 | 1108 | 1115 | 1122 | 1123 | 1132 | 1137 | 1137 |
| L03 Other property services | <i>SUL03</i> | 1030 | 1037 | 1059 | 1043 | 1048 | 1070 | 1078 | 1073 | 1086 |
| L04 Business services | <i>SUL04</i> | 1183 | 1190 | 1204 | 1223 | 1228 | 1233 | 1239 | 1252 | 1260 |
| P Cultural and recreational services⁽³⁾ | <i>SUP</i> | 1257 | 1266 | 1276 | 1288 | 1300 | 1311 | 1316 | 1325 | 1339 |
| Q Personal and other services⁽³⁾ | <i>SUQ</i> | 1196 | 1205 | 1213 | 1221 | 1250 | 1256 | 1268 | 1270 | 1294 |
| X01 Agriculture | <i>SUX01</i> | 1283 | 1283 | 1232 | 1242 | 1287 | 1257 | 1180 | 1221 | 1332 |
| X05 Food, beverages and tobacco | <i>SUX05</i> | 1217 | 1213 | 1234 | 1249 | 1275 | 1247 | 1268 | 1305 | 1306 |
| X08 Paper, printing and publishing | <i>SUX08</i> | 1174 | 1168 | 1175 | 1182 | 1184 | 1190 | 1189 | 1224 | 1236 |
| X09 Chemicals, petroleum and plastics | <i>SUX09</i> | 1160 | 1178 | 1176 | 1198 | 1220 | 1228 | 1202 | 1290 | 1282 |
| X12 Machinery and metal products | <i>SUX12</i> | 1150 | 1163 | 1169 | 1194 | 1206 | 1216 | 1245 | 1299 | 1326 |
| 9 ALL INDUSTRIES | <i>SU9</i> | 1160 | 1166 | 1172 | 1186 | 1207 | 1211 | 1219 | 1252 | 1265 R |

(1) Tobacco product manufacturing has been combined with Beverage and malt manufacturing for confidentiality reasons.

(2) The Water supply industry index is not of sufficient quality and a separate index for it is not published.

(3) The series reference has changed, as at the June 2000 quarter, for consistency with series references for other divisions. The composition of this index is unchanged.

(4) Rail transport has been combined with Other transport and storage services for confidentiality reasons.

Symbol

R revised

Producers Price Index: September 2006 quarter

Table 2

Producers Price Index
Inputs – index numbers
 Base: December 1997 quarter (=1000)

| Industry group | Series ref: PPIQ | Quarter | | | | | | | | | |
|----------------|---|--------------|------|------|------|------|------|------|------|------|------|
| | | 2004 | | 2005 | | | | 2006 | | | |
| | | Sep | Dec | Mar | Jun | Sep | Dec | Mar | Jun | Sep | |
| A | Agriculture, forestry and fishing | <i>SNA</i> | 1192 | 1202 | 1215 | 1237 | 1263 | 1261 | 1266 | 1291 | 1301 |
| A01 | Horticulture and fruit growing | <i>SNA01</i> | 1164 | 1173 | 1178 | 1198 | 1221 | 1219 | 1230 | 1254 | 1262 |
| A02 | Sheep and beef farming ⁽¹⁾ | <i>SNA02</i> | 1296 | 1310 | 1330 | 1353 | 1385 | 1385 | 1383 | 1406 | 1415 |
| A03 | Dairy cattle farming | <i>SNA03</i> | 1230 | 1240 | 1247 | 1283 | 1316 | 1315 | 1326 | 1353 | 1365 |
| A04 | Cropping and other farming ⁽¹⁾ | <i>SNA04</i> | 1187 | 1210 | 1242 | 1259 | 1282 | 1260 | 1268 | 1275 | 1282 |
| A05 | Services to ag, hunting and trapping | <i>SNA05</i> | 1262 | 1270 | 1278 | 1302 | 1340 | 1341 | 1355 | 1395 | 1406 |
| A06 | Forestry and logging | <i>SNA06</i> | 1011 | 1009 | 1017 | 1034 | 1043 | 1042 | 1045 | 1073 | 1082 |
| A07 | Fishing | <i>SNA07</i> | 1120 | 1140 | 1129 | 1137 | 1167 | 1162 | 1177 | 1218 | 1236 |
| B | Mining | <i>SNB</i> | 1181 | 1188 | 1195 | 1214 | 1234 | 1255 | 1269 | 1329 | 1355 |
| C | Manufacturing | <i>SNC</i> | 1154 | 1160 | 1154 | 1166 | 1185 | 1187 | 1177 | 1212 | 1255 |
| C01 | Meat and meat product mfg | <i>SNC01</i> | 1323 | 1318 | 1240 | 1263 | 1359 | 1295 | 1163 | 1211 | 1363 |
| C02 | Dairy product mfg | <i>SNC02</i> | 1110 | 1114 | 1116 | 1119 | 1130 | 1133 | 1134 | 1139 | 1188 |
| C03 | Other food mfg | <i>SNC03</i> | 1122 | 1142 | 1132 | 1143 | 1160 | 1172 | 1168 | 1211 | 1240 |
| C04 C05 | Tobacco, beverage and malt mfg ⁽²⁾ | <i>SNC04</i> | 1196 | 1204 | 1220 | 1231 | 1270 | 1279 | 1285 | 1285 | 1302 |
| C06 | Textile and apparel mfg | <i>SNC06</i> | 1020 | 999 | 983 | 991 | 991 | 984 | 979 | 1012 | 1025 |
| C07 | Wood product mfg | <i>SNC07</i> | 1035 | 1013 | 1023 | 1028 | 1030 | 1037 | 1043 | 1065 | 1081 |
| C08 | Paper and paper product mfg | <i>SNC08</i> | 1139 | 1136 | 1139 | 1149 | 1155 | 1164 | 1158 | 1213 | 1232 |
| C09 | Printing, publishing and recorded media | <i>SNC09</i> | 1132 | 1138 | 1137 | 1132 | 1142 | 1145 | 1151 | 1168 | 1205 |
| C10 | Petroleum, coal and basic chemical mfg | <i>SNC10</i> | 1223 | 1232 | 1274 | 1326 | 1331 | 1353 | 1385 | 1409 | 1457 |
| C11 | Rubber plastics and other chemical mfg | <i>SNC11</i> | 1126 | 1151 | 1176 | 1190 | 1198 | 1200 | 1212 | 1229 | 1253 |
| C12 | Non-metallic mineral product mfg | <i>SNC12</i> | 1178 | 1187 | 1210 | 1221 | 1240 | 1251 | 1269 | 1299 | 1309 |
| C13 | Basic metal mfg | <i>SNC13</i> | 1309 | 1338 | 1320 | 1294 | 1281 | 1337 | 1354 | 1497 | 1478 |
| C14 | Sheet and fabricated metal product mfg | <i>SNC14</i> | 1136 | 1152 | 1141 | 1172 | 1198 | 1214 | 1214 | 1295 | 1322 |
| C15 | Transport equipment mfg | <i>SNC15</i> | 1114 | 1121 | 1121 | 1128 | 1134 | 1145 | 1147 | 1163 | 1171 |
| C16 | Machinery and equipment mfg | <i>SNC16</i> | 1190 | 1204 | 1206 | 1213 | 1220 | 1236 | 1253 | 1294 | 1359 |
| C17 | Other manufacturing | <i>SNC17</i> | 1121 | 1125 | 1130 | 1140 | 1150 | 1159 | 1169 | 1197 | 1206 |
| D | Electricity, gas and water⁽³⁾ | <i>SND</i> | 1104 | 1098 | 1142 | 1202 | 1344 | 1481 | 1604 | 1469 | 1306 |
| D01 | Electricity generation and supply | <i>SND01</i> | 1094 | 1083 | 1124 | 1196 | 1364 | 1517 | 1651 | 1478 | 1283 |
| D02 | Gas supply | <i>SND02</i> | 1157 | 1190 | 1304 | 1270 | 1250 | 1333 | 1440 | 1570 | 1583 |
| E | Construction⁽⁴⁾ | <i>SNE</i> | 1222 | 1238 | 1253 | 1285 | 1310 | 1327 | 1364 | 1407 | 1467 |
| F | Wholesale trade⁽⁴⁾ | <i>SNF</i> | 1265 | 1268 | 1279 | 1340 | 1458 | 1496 | 1507 | 1620 | 1678 |
| G | Retail trade⁽⁴⁾ | <i>SNG</i> | 1147 | 1159 | 1162 | 1170 | 1184 | 1196 | 1200 | 1221 | 1232 |
| H | Accommodation, cafes and restaurants⁽⁴⁾ | <i>SNH</i> | 1163 | 1174 | 1175 | 1182 | 1196 | 1204 | 1200 | 1222 | 1236 |
| I | Transport and storage | <i>SNI</i> | 1252 | 1298 | 1269 | 1340 | 1377 | 1420 | 1456 | 1526 | 1561 |
| I01 | Road transport | <i>SNI01</i> | 1220 | 1251 | 1262 | 1292 | 1343 | 1368 | 1420 | 1484 | 1544 |
| I03 | Water transport | <i>SNI03</i> | 1102 | 1114 | 1121 | 1144 | 1183 | 1208 | 1227 | 1257 | 1253 |
| I04 | Air transport | <i>SNI04</i> | 1369 | 1445 | 1357 | 1499 | 1535 | 1608 | 1643 | 1747 | 1782 |
| I02 I09 | Rail, other transport and storage services ⁽⁵⁾ | <i>SNI09</i> | 1120 | 1145 | 1158 | 1166 | 1188 | 1205 | 1228 | 1252 | 1265 |
| J | Communication services⁽⁴⁾ | <i>SNJ</i> | 1014 | 1022 | 1030 | 1037 | 1046 | 1049 | 1062 | 1084 | 1101 |

For footnotes, see end of table.

Producers Price Index: September 2006 quarter

Table 2
continued

Producers Price Index
Inputs – index numbers
Base: December 1997 quarter (=1000)

| Industry group | Series ref: PPIQ | Quarter | | | | | | | | |
|---|---------------------|---------|------|------|------|------|------|------|------|------|
| | | 2004 | | 2005 | | | | 2006 | | |
| | | Sep | Dec | Mar | Jun | Sep | Dec | Mar | Jun | Sep |
| K Finance and insurance | <i>SNK</i> | 1147 | 1154 | 1160 | 1168 | 1178 | 1185 | 1194 | 1211 | 1218 |
| K01 Finance | <i>SNK01</i> | 1142 | 1148 | 1156 | 1162 | 1173 | 1181 | 1188 | 1207 | 1213 |
| K02 Insurance | <i>SNK02</i> | 1153 | 1162 | 1165 | 1175 | 1182 | 1189 | 1200 | 1209 | 1216 |
| K03 Services to finance and insurance | <i>SNK03</i> | 1151 | 1160 | 1167 | 1177 | 1189 | 1196 | 1209 | 1233 | 1245 |
| L Property and business services | <i>SNL</i> | 1165 | 1175 | 1181 | 1198 | 1211 | 1221 | 1234 | 1249 | 1264 |
| L01 Real estate | <i>SNL01</i> | 1212 | 1219 | 1232 | 1261 | 1281 | 1291 | 1309 | 1327 | 1340 |
| L02 Ownership of owner-occupied dwellings | <i>SNL02</i> | 1184 | 1196 | 1202 | 1213 | 1239 | 1250 | 1268 | 1283 | 1320 |
| L03 Other property services | <i>SNL03</i> | 1176 | 1195 | 1198 | 1215 | 1228 | 1242 | 1259 | 1283 | 1304 |
| L04 Business services | <i>SNL04</i> | 1142 | 1151 | 1156 | 1170 | 1178 | 1187 | 1196 | 1209 | 1218 |
| M Public administration and defence⁽⁴⁾⁽⁶⁾ | <i>SNM</i> | 1159 | 1169 | 1180 | 1192 | 1207 | 1215 | 1226 | 1245 | 1255 |
| M01 Central government and defence ⁽⁷⁾⁽⁸⁾ | <i>SNM01</i> | 1142 | 1152 | 1162 | 1172 | 1186 | 1194 | 1202 | 1217 | 1225 |
| M02 Local government and civil defence ⁽⁹⁾ | <i>SNM02</i> | 1182 | 1191 | 1203 | 1219 | 1234 | 1243 | 1257 | 1281 | 1294 |
| N Education⁽⁴⁾ | <i>SNN</i> | 1128 | 1133 | 1140 | 1149 | 1158 | 1163 | 1169 | 1181 | 1188 |
| O Health and community services⁽⁴⁾ | <i>SNO</i> | 1123 | 1129 | 1134 | 1150 | 1160 | 1167 | 1173 | 1191 | 1197 |
| P Cultural and recreational services⁽⁴⁾ | <i>SNP</i> | 1147 | 1154 | 1158 | 1175 | 1184 | 1193 | 1203 | 1216 | 1225 |
| Q Personal and other services⁽⁴⁾ | <i>SNQ</i> | 1201 | 1213 | 1222 | 1232 | 1266 | 1276 | 1307 | 1327 | 1354 |
| X01 Agriculture | <i>SNX01</i> | 1245 | 1258 | 1274 | 1299 | 1330 | 1326 | 1331 | 1353 | 1362 |
| X05 Food, beverage and tobacco | <i>SNX05</i> | 1182 | 1188 | 1165 | 1177 | 1216 | 1203 | 1165 | 1193 | 1263 |
| X08 Paper, printing and publishing | <i>SNX08</i> | 1136 | 1137 | 1138 | 1141 | 1149 | 1155 | 1155 | 1192 | 1219 |
| X09 Chemicals, petroleum and plastics | <i>SNX09</i> | 1164 | 1183 | 1214 | 1244 | 1250 | 1260 | 1280 | 1300 | 1333 |
| X12 Machinery and metal products | <i>SNX12</i> | 1164 | 1178 | 1175 | 1191 | 1204 | 1219 | 1228 | 1279 | 1323 |
| 8 All industries excl admin health education | <i>SN8</i> | 1178 | 1187 | 1190 | 1215 | 1251 | 1267 | 1278 | 1313 | 1341 |
| 9 ALL INDUSTRIES | <i>SN9</i> | 1175 | 1185 | 1188 | 1212 | 1247 | 1262 | 1273 | 1307 | 1333 |

(1) Agriculture input indexes by farm type are based on Farm Expenses Price Index (FEPI) categories, not ANZSIC categories. Output Agriculture indexes by farm type are based on ANZSIC.

(2) Tobacco product manufacturing has been combined with Beverage and malt manufacturing for confidentiality reasons.

(3) The Water supply industry index is not of sufficient quality and a separate index for it is not published.

(4) The series reference has changed, as at the June 2000 quarter, for consistency with series references for other divisions. The composition of this index is unchanged.

(5) Rail transport has been combined with Other transport and storage services for confidentiality reasons.

(6) The official industry group title of Government administration, defence, public order and safety services has been abbreviated to Public administration and defence in this publication.

(7) The series reference PPIQ.SNM01 was published prior to the June 2000 quarter and differs from this series. The series for Government administration, defence, public order and safety service, which includes both central and local government services, is now published with the series reference PPIQ.SNM.

(8) The official sub-industry group title of Central government administration, defence, public order and safety services has been abbreviated to Central government and defence in this publication.

(9) The official sub-industry group title of Local government administration services and civil defence has been abbreviated to Local government and civil defence in this publication.

Producers Price Index: September 2006 quarter

Table 3

Producers Price Index
Outputs
Percentage change from previous quarter

| Industry group | Series ref: PPIQ | Quarter | | | | | | | | | |
|----------------|---|--------------|------|------|------|------|------|------|------|------|--------|
| | | 2004 | | 2005 | | | | 2006 | | | |
| | | Sep | Dec | Mar | Jun | Sep | Dec | Mar | Jun | Sep | |
| A | Agriculture, forestry and fishing | <i>SUA</i> | 2.9 | -0.5 | -2.7 | 0.7 | 2.9 | -1.8 | -4.4 | 3.5 | 7.2 |
| A01 | Horticulture and fruit growing | <i>SUA01</i> | 3.0 | 2.5 | -5.1 | -0.8 | 2.1 | 2.6 | -5.8 | 8.1 | 10.7 |
| A02 | Livestock and cropping farming | <i>SUA02</i> | 8.7 | -1.1 | -5.6 | 1.5 | 5.7 | -5.2 | -9.3 | 3.5 | 10.3 |
| A03 | Dairy cattle farming | <i>SUA03</i> | 0.1 | -0.3 | -0.9 | 0.7 | 2.1 | -1.3 | -1.7 | 1.2 | 6.8 |
| A04 | Other farming | <i>SUA04</i> | 1.2 | 2.0 | -1.8 | -0.1 | 0.8 | 0.5 | -4.3 | 1.3 | 5.8 |
| A05 | Services to ag, hunting and trapping | <i>SUA05</i> | 2.1 | 1.1 | 0.4 | 0.8 | 2.0 | 1.9 | 1.4 | 1.3 | 1.7 |
| A06 | Forestry and logging | <i>SUA06</i> | -4.3 | -4.5 | 3.4 | 0.1 | -0.9 | -0.2 | 2.0 | 3.7 | 2.3 |
| A07 | Fishing | <i>SUA07</i> | -1.0 | 1.3 | -1.6 | 1.0 | 1.9 | -0.9 | -0.2 | 4.0 | 1.4 |
| B | Mining | <i>SUB</i> | -1.9 | 5.9 | -1.5 | 7.4 | 3.8 | 7.7 | 2.0 | 16.2 | -0.4 |
| C | Manufacturing | <i>SUC</i> | 0.5 | 0.2 | 1.3 | 1.1 | 1.3 | -0.6 | 1.0 | 3.7 | 0.6 |
| C01 | Meat and meat product mfg | <i>SUC01</i> | -1.3 | -3.3 | 2.8 | -0.1 | 1.8 | -7.3 | 1.2 | 3.2 | 4.7 |
| C02 | Dairy product mfg | <i>SUC02</i> | 1.0 | 2.1 | 2.1 | 4.1 | 3.7 | -1.6 | 3.7 | 4.6 | -4.4 |
| C03 | Other food mfg | <i>SUC03</i> | -0.1 | -0.1 | 0.5 | -0.3 | 0.6 | 1.7 | 0.5 | 1.4 | 1.0 |
| C04 C05 | Tobacco, beverage and malt mfg ⁽¹⁾ | <i>SUC04</i> | 2.2 | 0.6 | 1.1 | 0.2 | 2.0 | -0.1 | 0.3 | 0.8 | 0.4 |
| C06 | Textile and apparel mfg | <i>SUC06</i> | -0.6 | -1.3 | -1.0 | -0.3 | -0.1 | -1.8 | 0.1 | 2.2 | -0.4 |
| C07 | Wood product mfg | <i>SUC07</i> | -1.0 | 0.3 | 0.1 | 1.9 | 0.2 | 1.4 | 1.6 | 1.6 | 0.8 |
| C08 | Paper and paper product mfg | <i>SUC08</i> | -3.1 | -1.4 | -0.2 | 0.1 | -0.6 | 1.0 | -0.5 | 6.3 | 1.6 |
| C09 | Printing, publishing and recorded media | <i>SUC09</i> | 1.4 | 0.2 | 1.3 | 0.9 | 0.7 | 0.2 | 0.3 | 0.3 | 0.5 |
| C10 | Petroleum, coal and basic chemical mfg | <i>SUC10</i> | 5.2 | 0.7 | -1.5 | 2.6 | 3.9 | 3.0 | -5.6 | 17.1 | -3.4 |
| C11 | Rubber plastics and other chemical mfg | <i>SUC11</i> | 0.8 | 2.2 | 0.8 | 1.1 | 0.4 | -0.9 | 0.5 | 0.4 | 1.6 |
| C12 | Non-metallic mineralproduct mfg | <i>SUC12</i> | 1.2 | 0.9 | 3.4 | 0.6 | 1.2 | 0.7 | 1.0 | 0.4 | 0.4 |
| C13 | Basic metal mfg | <i>SUC13</i> | 0.9 | 0.7 | 13.7 | -3.4 | 0.7 | -1.2 | 1.9 | 6.8 | 2.6 |
| C14 | Sheet and fabricated metal product mfg | <i>SUC14</i> | 1.9 | 1.2 | 1.3 | 3.0 | 2.2 | 0.6 | 0.6 | 0.0 | 5.3 |
| C15 | Transport equipment mfg | <i>SUC15</i> | -0.3 | 0.4 | 0.6 | 0.9 | 0.2 | -0.4 | 1.6 | 5.2 | 1.1 |
| C16 | Machinery and equipment mfg | <i>SUC16</i> | 0.8 | 1.3 | -0.1 | 1.9 | 0.3 | 1.2 | 3.9 | 7.2 | 0.1 |
| C17 | Other manufacturing | <i>SUC17</i> | 1.6 | 0.2 | 0.5 | 1.2 | 0.2 | 0.3 | 0.7 | 1.0 | 1.3 |
| D | Electricity, gas and water⁽²⁾ | <i>SUD</i> | -4.2 | 1.8 | 3.2 | 4.4 | 8.2 | 8.0 | 5.9 | -0.6 | -4.4 R |
| D01 | Electricity generation and supply | <i>SUD01</i> | -5.1 | 1.7 | 2.7 | 5.3 | 9.5 | 8.8 | 6.1 | -0.9 | -5.6 R |
| D02 | Gas supply | <i>SUD02</i> | 3.1 | 4.6 | 8.4 | -1.3 | -0.9 | 3.2 | 6.3 | 2.5 | 4.5 |
| E | Construction⁽³⁾ | <i>SUE</i> | 2.0 | 1.1 | 1.1 | 1.5 | 1.9 | 1.2 | 1.4 | 1.1 | 2.4 |
| F | Wholesale trade⁽³⁾ | <i>SUF</i> | 0.4 | 0.3 | 0.2 | 1.8 | 2.9 | -0.9 | 1.6 | 5.6 | 0.6 |
| G | Retail trade⁽³⁾ | <i>SUG</i> | -0.1 | 0.4 | 0.4 | 0.6 | 1.1 | 0.0 | 0.7 | 1.7 | 0.3 |
| H | Accommodation, cafes and restaurants⁽³⁾ | <i>SUH</i> | 1.2 | 1.3 | 1.0 | -0.5 | 0.9 | 1.3 | 0.9 | 0.0 | 1.5 |
| I | Transport and storage | <i>SUI</i> | 0.8 | 0.8 | 0.2 | 0.8 | 1.8 | 0.4 | 0.9 | 4.3 | 1.2 |
| I01 | Road transport | <i>SUI01</i> | 1.5 | 1.0 | 0.9 | 0.9 | 1.4 | 1.7 | 2.0 | 1.8 | 1.3 |
| I03 | Water transport | <i>SUI03</i> | -4.0 | -2.5 | 0.4 | 3.1 | 2.8 | 0.0 | 4.9 | 1.5 | -0.2 |
| I04 | Air transport | <i>SUI04</i> | 0.3 | 1.1 | -0.3 | 1.0 | 2.5 | -0.7 | 0.1 | 8.8 | -0.5 |
| I02 I09 | Rail, other transport and storage services ⁽⁴⁾ | <i>SUI09</i> | 1.3 | 0.6 | -0.1 | 0.1 | 1.2 | 0.5 | 0.2 | 2.3 | 3.6 |
| J | Communication services⁽³⁾ | <i>SUJ</i> | -0.7 | 0.5 | -0.2 | 0.0 | 2.0 | 0.2 | 0.7 | 0.7 | 0.5 |

For footnotes, see end of table.

Producers Price Index: September 2006 quarter

Table 3
continued

Producers Price Index
Outputs
Percentage change from previous quarter

| Industry group | Series ref: PPIQ | Quarter | | | | | | | | |
|---|---------------------|---------|------|------|------|------|------|------|------|-------|
| | | 2004 | | 2005 | | | | 2006 | | |
| | | Sep | Dec | Mar | Jun | Sep | Dec | Mar | Jun | Sep |
| K Finance and insurance | <i>SUK</i> | 2.5 | 0.3 | -0.4 | -1.0 | 0.1 | 0.5 | -1.5 | 0.3 | 0.1 |
| K01 Finance | <i>SUK01</i> | 3.9 | -0.7 | -1.0 | -2.1 | -0.3 | 0.9 | -3.1 | 0.4 | 0.0 |
| K02 Insurance | <i>SUK02</i> | 0.3 | 0.8 | -0.3 | 0.8 | -0.4 | 0.0 | 0.5 | -0.7 | 0.8 |
| K03 Services to finance and insurance | <i>SUK03</i> | 0.5 | 4.4 | 1.7 | 0.3 | 3.3 | -0.7 | 2.2 | 1.7 | -0.6 |
| L Property and business services | <i>SUL</i> | 0.8 | 0.5 | 0.9 | 1.2 | 0.8 | 0.3 | 0.8 | 0.8 | 0.4 |
| L01 Real estate | <i>SUL01</i> | 1.0 | 0.4 | 1.1 | 1.7 | 1.6 | 0.7 | 0.9 | 1.1 | 0.4 |
| L02 Ownership of owner-occupied dwellings | <i>SUL02</i> | 0.5 | 0.4 | 0.4 | 0.6 | 0.6 | 0.1 | 0.8 | 0.4 | 0.0 |
| L03 Other property services | <i>SUL03</i> | 1.1 | 0.7 | 2.1 | -1.5 | 0.5 | 2.1 | 0.7 | -0.5 | 1.2 |
| L04 Business services | <i>SUL04</i> | 0.9 | 0.6 | 1.2 | 1.6 | 0.4 | 0.4 | 0.5 | 1.0 | 0.6 |
| P Cultural and recreational services⁽³⁾ | <i>SUP</i> | 0.9 | 0.7 | 0.8 | 0.9 | 0.9 | 0.8 | 0.4 | 0.7 | 1.1 |
| Q Personal and other services⁽³⁾ | <i>SUQ</i> | 1.0 | 0.8 | 0.7 | 0.7 | 2.4 | 0.5 | 1.0 | 0.2 | 1.9 |
| X01 Agriculture | <i>SUX01</i> | 4.6 | 0.0 | -4.0 | 0.8 | 3.6 | -2.3 | -6.1 | 3.5 | 9.1 |
| X05 Food, beverages and tobacco | <i>SUX05</i> | 0.2 | -0.3 | 1.7 | 1.2 | 2.1 | -2.2 | 1.7 | 2.9 | 0.1 |
| X08 Paper, printing and publishing | <i>SUX08</i> | -0.7 | -0.5 | 0.6 | 0.6 | 0.2 | 0.5 | -0.1 | 2.9 | 1.0 |
| X09 Chemicals, petroleum and plastics | <i>SUX09</i> | 2.6 | 1.6 | -0.2 | 1.9 | 1.8 | 0.7 | -2.1 | 7.3 | -0.6 |
| X12 Machinery and metal products | <i>SUX12</i> | 1.0 | 1.1 | 0.5 | 2.1 | 1.0 | 0.8 | 2.4 | 4.3 | 2.1 |
| 9 ALL INDUSTRIES | <i>SU9</i> | 0.8 | 0.5 | 0.5 | 1.2 | 1.8 | 0.3 | 0.7 | 2.7 | 1.0 R |

(1) Tobacco product manufacturing has been combined with Beverage and malt manufacturing for confidentiality reasons.

(2) The Water supply industry index is not of sufficient quality and a separate index for it is not published.

(3) The series reference has changed, as at the June 2000 quarter, for consistency with series references for other divisions. The composition of this index is unchanged.

(4) Rail transport has been combined with Other transport and storage services for confidentiality reasons.

Symbol

R revised

Producers Price Index: September 2006 quarter

Table 4

Producers Price Index
Inputs
Percentage change from previous quarter

| Industry group | Series ref: PPIQ | Quarter | | | | | | | | | |
|----------------|---|--------------|------|------|------|------|------|------|-------|-------|-------|
| | | 2004 | | 2005 | | | | 2006 | | | |
| | | Sep | Dec | Mar | Jun | Sep | Dec | Mar | Jun | Sep | |
| A | Agriculture, forestry and fishing | <i>SNA</i> | 0.9 | 0.8 | 1.1 | 1.8 | 2.1 | -0.2 | 0.4 | 2.0 | 0.8 |
| A01 | Horticulture and fruit growing | <i>SNA01</i> | 1.5 | 0.8 | 0.4 | 1.7 | 1.9 | -0.2 | 0.9 | 2.0 | 0.6 |
| A02 | Sheep and beef farming ⁽¹⁾ | <i>SNA02</i> | 1.3 | 1.1 | 1.5 | 1.7 | 2.4 | 0.0 | -0.1 | 1.7 | 0.6 |
| A03 | Dairy cattle farming | <i>SNA03</i> | 0.8 | 0.8 | 0.6 | 2.9 | 2.6 | -0.1 | 0.8 | 2.0 | 0.9 |
| A04 | Cropping and other farming ⁽¹⁾ | <i>SNA04</i> | 1.1 | 1.9 | 2.6 | 1.4 | 1.8 | -1.7 | 0.6 | 0.6 | 0.5 |
| A05 | Services to ag, hunting and trapping | <i>SNA05</i> | 2.0 | 0.6 | 0.6 | 1.9 | 2.9 | 0.1 | 1.0 | 3.0 | 0.8 |
| A06 | Forestry and logging | <i>SNA06</i> | -0.9 | -0.2 | 0.8 | 1.7 | 0.9 | -0.1 | 0.3 | 2.7 | 0.8 |
| A07 | Fishing | <i>SNA07</i> | 0.5 | 1.8 | -1.0 | 0.7 | 2.6 | -0.4 | 1.3 | 3.5 | 1.5 |
| B | Mining | <i>SNB</i> | 0.9 | 0.6 | 0.6 | 1.6 | 1.6 | 1.7 | 1.1 | 4.7 | 2.0 |
| C | Manufacturing | <i>SNC</i> | 1.6 | 0.5 | -0.5 | 1.0 | 1.6 | 0.2 | -0.8 | 3.0 | 3.5 |
| C01 | Meat and meat product mfg | <i>SNC01</i> | 11.3 | -0.4 | -5.9 | 1.9 | 7.6 | -4.7 | -10.2 | 4.1 | 12.6 |
| C02 | Dairy product mfg | <i>SNC02</i> | -1.2 | 0.4 | 0.2 | 0.3 | 1.0 | 0.3 | 0.1 | 0.4 | 4.3 |
| C03 | Other food mfg | <i>SNC03</i> | 0.6 | 1.8 | -0.9 | 1.0 | 1.5 | 1.0 | -0.3 | 3.7 | 2.4 |
| C04 C05 | Tobacco, beverage and malt mfg ⁽²⁾ | <i>SNC04</i> | -0.6 | 0.7 | 1.3 | 0.9 | 3.2 | 0.7 | 0.5 | 0.0 | 1.3 |
| C06 | Textile and apparel mfg | <i>SNC06</i> | -1.1 | -2.1 | -1.6 | 0.8 | 0.0 | -0.7 | -0.5 | 3.4 | 1.3 |
| C07 | Wood product mfg | <i>SNC07</i> | -0.1 | -2.1 | 1.0 | 0.5 | 0.2 | 0.7 | 0.6 | 2.1 | 1.5 |
| C08 | Paper and paper product mfg | <i>SNC08</i> | -1.2 | -0.3 | 0.3 | 0.9 | 0.5 | 0.8 | -0.5 | 4.7 | 1.6 |
| C09 | Printing, publishing and recorded media | <i>SNC09</i> | -0.7 | 0.5 | -0.1 | -0.4 | 0.9 | 0.3 | 0.5 | 1.5 | 3.2 |
| C10 | Petroleum, coal and basic chemical mfg | <i>SNC10</i> | 2.1 | 0.7 | 3.4 | 4.1 | 0.4 | 1.7 | 2.4 | 1.7 | 3.4 |
| C11 | Rubber plastics and other chemical mfg | <i>SNC11</i> | 1.2 | 2.2 | 2.2 | 1.2 | 0.7 | 0.2 | 1.0 | 1.4 | 2.0 |
| C12 | Non-metallic mineral product mfg | <i>SNC12</i> | 1.2 | 0.8 | 1.9 | 0.9 | 1.6 | 0.9 | 1.4 | 2.4 | 0.8 |
| C13 | Basic metal mfg | <i>SNC13</i> | 5.0 | 2.2 | -1.3 | -2.0 | -1.0 | 4.4 | 1.3 | 10.6 | -1.3 |
| C14 | Sheet and fabricated metal product mfg | <i>SNC14</i> | 0.6 | 1.4 | -1.0 | 2.7 | 2.2 | 1.3 | 0.0 | 6.7 | 2.1 |
| C15 | Transport equipment mfg | <i>SNC15</i> | 0.1 | 0.6 | 0.0 | 0.6 | 0.5 | 1.0 | 0.2 | 1.4 | 0.7 |
| C16 | Machinery and equipment mfg | <i>SNC16</i> | 1.4 | 1.2 | 0.2 | 0.6 | 0.6 | 1.3 | 1.4 | 3.3 | 5.0 |
| C17 | Other manufacturing | <i>SNC17</i> | 0.9 | 0.4 | 0.4 | 0.9 | 0.9 | 0.8 | 0.9 | 2.4 | 0.8 |
| D | Electricity, gas and water⁽³⁾ | <i>SND</i> | -6.6 | -0.5 | 4.0 | 5.3 | 11.8 | 10.2 | 8.3 | -8.4 | -11.1 |
| D01 | Electricity generation and supply | <i>SND01</i> | -7.8 | -1.0 | 3.8 | 6.4 | 14.0 | 11.2 | 8.8 | -10.5 | -13.2 |
| D02 | Gas supply | <i>SND02</i> | 0.2 | 2.9 | 9.6 | -2.6 | -1.6 | 6.6 | 8.0 | 9.0 | 0.8 |
| E | Construction⁽⁴⁾ | <i>SNE</i> | 1.4 | 1.3 | 1.2 | 2.6 | 1.9 | 1.3 | 2.8 | 3.2 | 4.3 |
| F | Wholesale trade⁽⁴⁾ | <i>SNF</i> | 4.5 | 0.2 | 0.9 | 4.8 | 8.8 | 2.6 | 0.7 | 7.5 | 3.6 |
| G | Retail trade⁽⁴⁾ | <i>SNG</i> | 0.5 | 1.0 | 0.3 | 0.7 | 1.2 | 1.0 | 0.3 | 1.8 | 0.9 |
| H | Accommodation, cafes and restaurants⁽⁴⁾ | <i>SNH</i> | 1.4 | 0.9 | 0.1 | 0.6 | 1.2 | 0.7 | -0.3 | 1.8 | 1.1 |
| I | Transport and storage | <i>SNI</i> | 1.1 | 3.7 | -2.2 | 5.6 | 2.8 | 3.1 | 2.5 | 4.8 | 2.3 |
| I01 | Road transport | <i>SNI01</i> | 0.6 | 2.5 | 0.9 | 2.4 | 3.9 | 1.9 | 3.8 | 4.5 | 4.0 |
| I03 | Water transport | <i>SNI03</i> | -0.1 | 1.1 | 0.6 | 2.1 | 3.4 | 2.1 | 1.6 | 2.4 | -0.3 |
| I04 | Air transport | <i>SNI04</i> | 1.8 | 5.6 | -6.1 | 10.5 | 2.4 | 4.8 | 2.2 | 6.3 | 2.0 |
| I02 I09 | Rail, other transport and storage services ⁽⁵⁾ | <i>SNI09</i> | 0.5 | 2.2 | 1.1 | 0.7 | 1.9 | 1.4 | 1.9 | 2.0 | 1.0 |
| J | Communication services⁽⁴⁾ | <i>SNJ</i> | -0.4 | 0.8 | 0.8 | 0.7 | 0.9 | 0.3 | 1.2 | 2.1 | 1.6 |

For footnotes, see end of table.

Producers Price Index: September 2006 quarter

Table 4
continued

Producers Price Index
Inputs
Percentage change from previous quarter

| Industry group | Series ref: PPIQ | Quarter | | | | | | | | |
|---|---------------------|---------|-----|------|-----|-----|------|------|-----|-----|
| | | 2004 | | 2005 | | | | 2006 | | |
| | | Sep | Dec | Mar | Jun | Sep | Dec | Mar | Jun | Sep |
| K Finance and insurance | <i>SNK</i> | 0.4 | 0.6 | 0.5 | 0.7 | 0.9 | 0.6 | 0.8 | 1.4 | 0.6 |
| K01 Finance | <i>SNK01</i> | 0.4 | 0.5 | 0.7 | 0.5 | 0.9 | 0.7 | 0.6 | 1.6 | 0.5 |
| K02 Insurance | <i>SNK02</i> | 0.3 | 0.8 | 0.3 | 0.9 | 0.6 | 0.6 | 0.9 | 0.8 | 0.6 |
| K03 Services to finance and insurance | <i>SNK03</i> | 0.6 | 0.8 | 0.6 | 0.9 | 1.0 | 0.6 | 1.1 | 2.0 | 1.0 |
| L Property and business services | <i>SNL</i> | 0.8 | 0.9 | 0.5 | 1.4 | 1.1 | 0.8 | 1.1 | 1.2 | 1.2 |
| L01 Real estate | <i>SNL01</i> | 0.9 | 0.6 | 1.1 | 2.4 | 1.6 | 0.8 | 1.4 | 1.4 | 1.0 |
| L02 Ownership of owner-occupied dwellings | <i>SNL02</i> | 1.5 | 1.0 | 0.5 | 0.9 | 2.1 | 0.9 | 1.4 | 1.2 | 2.9 |
| L03 Other property services | <i>SNL03</i> | 0.9 | 1.6 | 0.3 | 1.4 | 1.1 | 1.1 | 1.4 | 1.9 | 1.6 |
| L04 Business services | <i>SNL04</i> | 0.4 | 0.8 | 0.4 | 1.2 | 0.7 | 0.8 | 0.8 | 1.1 | 0.7 |
| M Public administration and defence⁽⁴⁾⁽⁶⁾ | <i>SNM</i> | 1.0 | 0.9 | 0.9 | 1.0 | 1.3 | 0.7 | 0.9 | 1.5 | 0.8 |
| M01 Central government and defence ⁽⁷⁾⁽⁸⁾ | <i>SNM01</i> | 0.7 | 0.9 | 0.9 | 0.9 | 1.2 | 0.7 | 0.7 | 1.2 | 0.7 |
| M02 Local government and civil defence ⁽⁹⁾ | <i>SNM02</i> | 1.4 | 0.8 | 1.0 | 1.3 | 1.2 | 0.7 | 1.1 | 1.9 | 1.0 |
| N Education⁽⁴⁾ | <i>SNN</i> | 0.7 | 0.4 | 0.6 | 0.8 | 0.8 | 0.4 | 0.5 | 1.0 | 0.6 |
| O Health and community services⁽⁴⁾ | <i>SNO</i> | 0.4 | 0.5 | 0.4 | 1.4 | 0.9 | 0.6 | 0.5 | 1.5 | 0.5 |
| P Cultural and recreational services⁽⁴⁾ | <i>SNP</i> | 0.7 | 0.6 | 0.3 | 1.5 | 0.8 | 0.8 | 0.8 | 1.1 | 0.7 |
| Q Personal and other services⁽⁴⁾ | <i>SNQ</i> | 0.8 | 1.0 | 0.7 | 0.8 | 2.8 | 0.8 | 2.4 | 1.5 | 2.0 |
| X01 Agriculture | <i>SNX01</i> | 1.2 | 1.0 | 1.3 | 2.0 | 2.4 | -0.3 | 0.4 | 1.7 | 0.7 |
| X05 Food, beverage and tobacco | <i>SNX05</i> | 3.1 | 0.5 | -1.9 | 1.0 | 3.3 | -1.1 | -3.2 | 2.4 | 5.9 |
| X08 Paper, printing and publishing | <i>SNX08</i> | -1.0 | 0.1 | 0.1 | 0.3 | 0.7 | 0.5 | 0.0 | 3.2 | 2.3 |
| X09 Chemicals, petroleum and plastics | <i>SNX09</i> | 1.6 | 1.6 | 2.6 | 2.5 | 0.5 | 0.8 | 1.6 | 1.6 | 2.5 |
| X12 Machinery and metal products | <i>SNX12</i> | 1.0 | 1.2 | -0.3 | 1.4 | 1.1 | 1.2 | 0.7 | 4.2 | 3.4 |
| 8 All industries excl admin health education | <i>SN8</i> | 1.6 | 0.8 | 0.3 | 2.1 | 3.0 | 1.3 | 0.9 | 2.7 | 2.1 |
| 9 ALL INDUSTRIES | <i>SN9</i> | 1.5 | 0.9 | 0.3 | 2.0 | 2.9 | 1.2 | 0.9 | 2.7 | 2.0 |

(1) Agriculture input indexes by farm type are based on Farm Expenses Price Index (FEPI) categories, not ANZSIC categories. Output Agriculture indexes by farm type are based on ANZSIC.

(2) Tobacco product manufacturing has been combined with Beverage and malt manufacturing for confidentiality reasons.

(3) The Water supply industry index is not of sufficient quality and a separate index for it is not published.

(4) The series reference has changed, as at the June 2000 quarter, for consistency with series references for other divisions. The composition of this index is unchanged.

(5) Rail transport has been combined with Other transport and storage services for confidentiality reasons.

(6) The official industry group title of Government administration, defence, public order and safety services has been abbreviated to Public administration and defence in this publication.

(7) The series reference PPIQ.SNM01 was published prior to the June 2000 quarter and differs from this series. The series for Government administration, defence, public order and safety service, which includes both central and local government services, is now published with the series reference PPIQ.SNM.

(8) The official sub-industry group title of Central government administration, defence, public order and safety services has been abbreviated to Central government and defence in this publication.

(9) The official sub-industry group title of Local government administration services and civil defence has been abbreviated to Local government and civil defence in this publication.

Producers Price Index: September 2006 quarter

Table 5

Producers Price Index
Outputs – selected industries
 Percentage change from same quarter of previous year

| Industry group | Series ref: PPIQ | Quarter | | | | | | | | | |
|----------------|---|--------------|-------|-------|------|------|------|------|------|------|-------|
| | | 2004 | | 2005 | | | | 2006 | | | |
| | | Sep | Dec | Mar | Jun | Sep | Dec | Mar | Jun | Sep | |
| A | Agriculture, forestry and fishing | <i>SUA</i> | 3.0 | 1.2 | 1.6 | 0.3 | 0.3 | -1.0 | -2.7 | 0.0 | 4.2 |
| A02 | Livestock and cropping farming | <i>SUA02</i> | 5.9 | 4.4 | 6.0 | 3.1 | 0.2 | -3.9 | -7.8 | -5.9 | -1.8 |
| A03 | Dairy cattle farming | <i>SUA03</i> | 0.0 | -0.7 | -0.4 | -0.4 | 1.7 | 0.6 | -0.2 | 0.4 | 5.0 |
| A04 | Other farming | <i>SUA04</i> | -2.0 | -0.5 | 2.1 | 1.3 | 0.9 | -0.5 | -3.1 | -1.7 | 3.1 |
| A06 | Forestry and logging | <i>SUA06</i> | 2.2 | -7.5 | -3.7 | -5.3 | -2.0 | 2.4 | 1.0 | 4.6 | 8.0 |
| B | Mining | <i>SUB</i> | 9.0 | 15.0 | 14.1 | 9.9 | 16.3 | 18.2 | 22.4 | 32.4 | 27.0 |
| C | Manufacturing | <i>SUC</i> | 3.0 | 3.5 | 4.3 | 3.1 | 3.9 | 3.1 | 2.8 | 5.4 | 4.7 |
| C01 | Meat and meat product mfg | <i>SUC01</i> | 6.5 | 1.7 | 5.4 | -2.0 | 1.1 | -3.0 | -4.6 | -1.4 | 1.3 |
| C02 | Dairy product mfg | <i>SUC02</i> | 7.0 | 10.8 | 11.2 | 9.6 | 12.5 | 8.4 | 10.1 | 10.7 | 2.0 |
| C03 | Other food mfg | <i>SUC03</i> | 0.0 | -0.4 | 0.4 | 0.0 | 0.7 | 2.4 | 2.4 | 4.2 | 4.6 |
| C08 | Paper and paper product mfg | <i>SUC08</i> | -1.1 | -0.7 | -0.2 | -4.6 | -2.0 | 0.4 | 0.1 | 6.3 | 8.6 |
| C09 | Printing, publishing and recorded media | <i>SUC09</i> | 1.5 | 1.8 | 2.8 | 3.8 | 3.2 | 3.1 | 2.1 | 1.5 | 1.2 |
| C10 | Petroleum, coal and basic chemical mfg | <i>SUC10</i> | 6.3 | 7.1 | 3.1 | 7.1 | 5.9 | 8.3 | 3.7 | 18.4 | 10.0 |
| C13 | Basic metal mfg | <i>SUC13</i> | 5.0 | 6.5 | 18.3 | 11.6 | 11.3 | 9.2 | -2.1 | 8.3 | 10.4 |
| D | Electricity, gas and water⁽¹⁾ | <i>SUD</i> | -13.7 | -14.3 | -5.3 | 5.1 | 18.6 | 25.8 | 29.1 | 22.9 | 8.6 R |
| D01 | Electricity generation and supply | <i>SUD01</i> | -16.6 | -17.4 | -7.7 | 4.4 | 20.5 | 28.9 | 33.2 | 25.3 | 8.0 R |
| E | Construction⁽²⁾ | <i>SUE</i> | 7.8 | 7.8 | 6.9 | 5.9 | 5.7 | 5.8 | 6.2 | 5.7 | 6.1 |
| F | Wholesale trade⁽²⁾ | <i>SUF</i> | 1.1 | 1.7 | 2.5 | 2.7 | 5.2 | 4.0 | 5.5 | 9.4 | 6.9 |
| G | Retail trade⁽²⁾ | <i>SUG</i> | 0.9 | 1.5 | 1.4 | 1.3 | 2.6 | 2.2 | 2.5 | 3.6 | 2.8 |
| H | Accommodation, cafes and restaurants⁽²⁾ | <i>SUH</i> | 3.4 | 3.6 | 3.5 | 3.0 | 2.7 | 2.7 | 2.6 | 3.1 | 3.7 |
| I | Transport and storage | <i>SUI</i> | 0.3 | 1.8 | 2.9 | 2.5 | 3.6 | 3.2 | 4.0 | 7.6 | 7.0 |
| I01 | Road transport | <i>SUI01</i> | 2.5 | 2.8 | 3.7 | 4.4 | 4.3 | 5.0 | 6.1 | 7.0 | 6.8 |
| I04 | Air transport | <i>SUI04</i> | -2.1 | 0.4 | 2.2 | 2.1 | 4.3 | 2.4 | 2.8 | 10.8 | 7.6 |
| J | Communication services⁽²⁾ | <i>SUJ</i> | -1.6 | -0.7 | -0.9 | -0.4 | 2.3 | 2.0 | 2.9 | 3.6 | 2.1 |
| K | Finance and insurance | <i>SUK</i> | 3.7 | 4.1 | 2.5 | 1.4 | -1.0 | -0.8 | -1.9 | -0.6 | -0.6 |
| K01 | Finance | <i>SUK01</i> | 3.6 | 3.9 | 1.5 | 0.0 | -4.1 | -2.6 | -4.6 | -2.2 | -1.9 |
| L | Property and business services | <i>SUL</i> | 3.8 | 3.3 | 3.1 | 3.5 | 3.4 | 3.2 | 3.1 | 2.7 | 2.3 |
| L04 | Business services | <i>SUL04</i> | 4.4 | 3.4 | 4.0 | 4.3 | 3.8 | 3.6 | 2.9 | 2.4 | 2.6 |
| P | Cultural and recreational services | <i>SUP</i> | 3.2 | 2.8 | 2.7 | 3.4 | 3.4 | 3.6 | 3.1 | 2.9 | 3.0 |
| Q | Personal and other services | <i>SUQ</i> | 4.7 | 5.0 | 3.9 | 3.1 | 4.5 | 4.2 | 4.5 | 4.0 | 3.5 |
| 9 | ALL INDUSTRIES | <i>SU9</i> | 2.4 | 2.6 | 3.2 | 3.0 | 4.1 | 3.9 | 4.0 | 5.6 | 4.8 R |

(1) The Water supply industry index is not of sufficient quality and a separate index for it is not published.

(2) The series reference has changed, as at the June 2000 quarter, for consistency with series references for other divisions. The composition of this index is unchanged.

Symbol

R revised

Producers Price Index: September 2006 quarter

Table 6

Producers Price Index
Inputs – selected industries
 Percentage change from same quarter of previous year

| Industry group | Series ref: PPIQ | Quarter | | | | | | | | |
|---|------------------------|---------|-------|-------|------|------|------|------|------|------|
| | | 2004 | | 2005 | | | | 2006 | | |
| | | Sep | Dec | Mar | Jun | Sep | Dec | Mar | Jun | Sep |
| A Agriculture, forestry and fishing | <i>SNA</i> | 2.6 | 3.4 | 4.5 | 4.7 | 6.0 | 4.9 | 4.2 | 4.4 | 3.0 |
| A02 Sheep and beef farming ⁽¹⁾ | <i>SNA02</i> | 3.6 | 4.6 | 5.7 | 5.8 | 6.9 | 5.7 | 4.0 | 3.9 | 2.2 |
| A03 Dairy cattle farming | <i>SNA03</i> | 1.6 | 2.6 | 3.1 | 5.2 | 7.0 | 6.0 | 6.3 | 5.5 | 3.7 |
| A04 Cropping and other farming ⁽¹⁾ | <i>SNA04</i> | 2.3 | 4.7 | 7.1 | 7.2 | 8.0 | 4.1 | 2.1 | 1.3 | 0.0 |
| A06 Forestry and logging | <i>SNA06</i> | 1.0 | 0.5 | 1.6 | 1.4 | 3.2 | 3.3 | 2.8 | 3.8 | 3.7 |
| B Mining | <i>SNB</i> | 2.9 | 4.0 | 5.2 | 3.8 | 4.5 | 5.6 | 6.2 | 9.5 | 9.8 |
| C Manufacturing | <i>SNC</i> | 2.9 | 3.6 | 4.1 | 2.6 | 2.7 | 2.3 | 2.0 | 3.9 | 5.9 |
| C01 Meat and meat product mfg | <i>SNC01</i> | 8.6 | 6.2 | 9.1 | 6.2 | 2.7 | -1.7 | -6.2 | -4.1 | 0.3 |
| C02 Dairy product mfg | <i>SNC02</i> | 0.0 | 0.6 | 0.6 | -0.4 | 1.8 | 1.7 | 1.6 | 1.8 | 5.1 |
| C03 Other food mfg | <i>SNC03</i> | 0.1 | 1.3 | 0.9 | 2.5 | 3.4 | 2.6 | 3.2 | 5.9 | 6.9 |
| C08 Paper and paper product mfg | <i>SNC08</i> | 4.2 | 4.9 | 6.5 | -0.3 | 1.4 | 2.5 | 1.7 | 5.6 | 6.7 |
| C09 Printing, publishing and recorded media | <i>SNC09</i> | -0.7 | 1.4 | 0.8 | -0.7 | 0.9 | 0.6 | 1.2 | 3.2 | 5.5 |
| C10 Petroleum, coal and basic chemical mfg | <i>SNC10</i> | 5.1 | 4.9 | 8.2 | 10.7 | 8.8 | 9.8 | 8.7 | 6.3 | 9.5 |
| C13 Basic metal mfg | <i>SNC13</i> | 15.5 | 16.7 | 8.8 | 3.8 | -2.1 | -0.1 | 2.6 | 15.7 | 15.4 |
| D Electricity, gas and water⁽²⁾ | <i>SND</i> | -22.3 | -24.0 | -12.5 | 1.7 | 21.7 | 34.9 | 40.5 | 22.2 | -2.8 |
| D01 Electricity generation and supply | <i>SND01</i> | -25.7 | -27.8 | -15.7 | 0.8 | 24.7 | 40.1 | 46.9 | 23.6 | -5.9 |
| E Construction⁽³⁾ | <i>SNE</i> | 4.8 | 6.5 | 6.4 | 6.6 | 7.2 | 7.2 | 8.9 | 9.5 | 12.0 |
| F Wholesale trade⁽³⁾ | <i>SNF</i> | 6.9 | 7.7 | 8.8 | 10.7 | 15.3 | 18.0 | 17.8 | 20.9 | 15.1 |
| G Retail trade⁽³⁾ | <i>SNG</i> | 1.5 | 2.3 | 2.8 | 2.5 | 3.2 | 3.2 | 3.3 | 4.4 | 4.1 |
| H Accommodation, cafes and restaurants⁽³⁾ | <i>SNH</i> | 2.3 | 2.7 | 3.0 | 3.1 | 2.8 | 2.6 | 2.1 | 3.4 | 3.3 |
| I Transport and storage | <i>SNI</i> | 4.9 | 9.4 | 6.9 | 8.2 | 10.0 | 9.4 | 14.7 | 13.9 | 13.4 |
| I01 Road transport | <i>SNI01</i> | 2.4 | 6.0 | 6.9 | 6.5 | 10.1 | 9.4 | 12.5 | 14.9 | 15.0 |
| I04 Air transport | <i>SNI04</i> | 8.8 | 15.6 | 8.4 | 11.4 | 12.1 | 11.3 | 21.1 | 16.5 | 16.1 |
| J Communication services⁽³⁾ | <i>SNJ</i> | 1.6 | 2.6 | 2.4 | 1.9 | 3.2 | 2.6 | 3.1 | 4.5 | 5.3 |
| K Finance and insurance | <i>SNK</i> | 2.3 | 2.1 | 2.2 | 2.3 | 2.7 | 2.7 | 2.9 | 3.7 | 3.4 |
| K01 Finance | <i>SNK01</i> | 2.4 | 1.8 | 2.2 | 2.2 | 2.7 | 2.9 | 2.8 | 3.9 | 3.4 |
| L Property and business services | <i>SNL</i> | 2.7 | 3.3 | 3.1 | 3.6 | 3.9 | 3.9 | 4.5 | 4.3 | 4.4 |
| L04 Business services | <i>SNL04</i> | 1.4 | 2.3 | 2.2 | 2.9 | 3.2 | 3.1 | 3.5 | 3.3 | 3.4 |
| M Public administration and defence⁽³⁾⁽⁴⁾ | <i>SNM</i> | 3.8 | 3.9 | 4.0 | 3.8 | 4.1 | 3.9 | 3.9 | 4.4 | 4.0 |
| N Education | <i>SNN</i> | 1.8 | 2.0 | 2.1 | 2.6 | 2.7 | 2.6 | 2.5 | 2.8 | 2.6 |
| O Health and community services⁽³⁾ | <i>SNO</i> | 1.5 | 1.8 | 1.9 | 2.9 | 3.3 | 3.4 | 3.4 | 3.6 | 3.2 |
| P Cultural and recreational services⁽³⁾ | <i>SNP</i> | 2.7 | 2.6 | 2.5 | 3.2 | 3.2 | 3.4 | 3.9 | 3.5 | 3.5 |
| Q Personal and other services⁽³⁾ | <i>SNQ</i> | 3.5 | 4.5 | 3.8 | 3.4 | 5.4 | 5.2 | 7.0 | 7.7 | 7.0 |
| 8 All industries excl admin health education | <i>SN8</i> | 2.6 | 3.4 | 4.3 | 4.7 | 6.2 | 6.7 | 7.4 | 8.1 | 7.2 |
| 9 ALL INDUSTRIES | <i>SN9</i> | 2.5 | 3.4 | 4.2 | 4.7 | 6.1 | 6.5 | 7.2 | 7.8 | 6.9 |

(1) Agriculture input indexes by farm type are based on Farm Expenses Price Index (FEPI) categories, not ANZSIC categories. Output Agriculture indexes by farm type are based on ANZSIC.

(2) The Water supply industry index is not of sufficient quality and a separate index for it is not published.

(3) The series reference has changed, as at the June 2000 quarter, for consistency with series references for other divisions. The composition of this index is unchanged.

(4) The official industry group title of Government administration, defence, public order and safety services has been abbreviated to Public administration and defence in this publication.

Producers Price Index: September 2006 quarter

Table 7

Producers Price Index
Selected commodities – index numbers and percentage changes
 Base: December 1997 Quarter (=1000)

| Selected commodities | Series ref: PPIQ | Quarter | | | | | | | | |
|--|------------------------|---------|------|------|------|------|------|------|------|------|
| | | 2004 | | 2005 | | | | 2006 | | |
| | | Sep | Dec | Mar | Jun | Sep | Dec | Mar | Jun | Sep |
| Livestock: sheep and lamb | SC01 | 1599 | 1617 | 1475 | 1503 | 1587 | 1492 | 1249 | 1249 | 1415 |
| Livestock: cattle | SC02 | 1518 | 1499 | 1441 | 1469 | 1622 | 1518 | 1397 | 1489 | 1691 |
| Livestock: deer | SC03 | 790 | 766 | 729 | 729 | 799 | 731 | 688 | 699 | 788 |
| Wool | SC04 | 1062 | 951 | 900 | 896 | 883 | 834 | 851 | 923 | 925 |
| Logs for domestic market | SC05 | 971 | 918 | 929 | 921 | 910 | 907 | 901 | 918 | 934 |
| Logs for export market | SC06 | 806 | 782 | 825 | 858 | 846 | 838 | 887 | 971 | 1022 |
| Processed meat: beef | SC07 | 1556 | 1470 | 1482 | 1528 | 1605 | 1443 | 1487 | 1500 | 1536 |
| Processed meat: sheep and lamb | SC08 | 1395 | 1402 | 1514 | 1447 | 1412 | 1338 | 1340 | 1406 | 1524 |
| Dairy products (excl milk and ice cream) | SC09 | 1173 | 1205 | 1228 | 1287 | 1340 | 1313 | 1369 | 1440 | 1372 |
| Carpet and textile floor coverings | SC10 | 1299 | 1316 | 1278 | 1281 | 1273 | 1280 | 1289 | 1302 | 1304 |
| Pulp | SC11 | 1095 | 1001 | 1015 | 1017 | 983 | 1025 | 1045 | 1167 | 1242 |
| Paper | SC12 | 1016 | 1016 | 1007 | 999 | 1004 | 993 | 999 | 1056 | 1079 |
| Fertiliser | SC13 | 1037 | 1039 | 1136 | 1157 | 1182 | 1184 | 1216 | 1217 | 1236 |
| Ready-mixed concrete | SC14 | 1122 | 1136 | 1203 | 1212 | 1224 | 1224 | 1256 | 1260 | 1265 |
| Framing timber | SC15 | 1045 | 1071 | 1071 | 1078 | 1077 | 1076 | 1053 | 1061 | 1069 |
| Electricity: commercial consumers | SC16 | 1142 | 1194 | 1202 | 1246 | 1264 | 1311 | 1301 | 1448 | 1350 |
| Gas: commercial consumers | SC17 | 1452 | 1519 | 1584 | 1592 | 1593 | 1591 | 1631 | 1659 | 1672 |
| Road freight | SC18 | 1175 | 1187 | 1201 | 1215 | 1237 | 1255 | 1285 | 1317 | 1335 |
| International sea freight | SC19 | 866 | 862 | 871 | 919 | 936 | 957 | 950 | 991 | 951 |
| Finance service charge | SC20 | 1173 | 1150 | 1129 | 1088 | 1078 | 1080 | 1016 | 1024 | 1023 |
| Bank charges | SC21 | 1303 | 1325 | 1328 | 1327 | 1331 | 1363 | 1376 | 1370 | 1368 |
| Commercial rent (excl agricultural land) | SC22 | 1057 | 1062 | 1068 | 1071 | 1084 | 1090 | 1094 | 1107 | 1112 |
| Legal services: personal and corporate | SC23 | 1255 | 1281 | 1348 | 1358 | 1357 | 1361 | 1373 | 1375 | 1378 |
| Accounting services | SC24 | 1489 | 1497 | 1500 | 1534 | 1558 | 1561 | 1562 | 1597 | 1616 |

Percentage change from previous quarter

| | | | | | | | | | |
|--|-------|-------|------|------|------|-------|-------|------|------|
| Livestock: sheep and lamb | 12.5 | 1.1 | -8.8 | 1.9 | 5.6 | -6.0 | -16.3 | 0.0 | 13.3 |
| Livestock: cattle | 12.9 | -1.3 | -3.9 | 1.9 | 10.4 | -6.4 | -8.0 | 6.6 | 13.6 |
| Livestock: deer | 11.4 | -3.0 | -4.8 | 0.0 | 9.6 | -8.5 | -5.9 | 1.6 | 12.7 |
| Wool | -3.3 | -10.5 | -5.4 | -0.4 | -1.5 | -5.5 | 2.0 | 8.5 | 0.2 |
| Logs for domestic market | -0.7 | -5.5 | 1.2 | -0.9 | -1.2 | -0.3 | -0.7 | 1.9 | 1.7 |
| Logs for export market | -10.2 | -3.0 | 5.5 | 4.0 | -1.4 | -0.9 | 5.8 | 9.5 | 5.3 |
| Processed meat: beef | 2.0 | -5.5 | 0.8 | 3.1 | 5.0 | -10.1 | 3.0 | 0.9 | 2.4 |
| Processed meat: sheep and lamb | -4.8 | 0.5 | 8.0 | -4.4 | -2.4 | -5.2 | 0.1 | 4.9 | 8.4 |
| Dairy products (excl milk and ice cream) | 1.2 | 2.7 | 1.9 | 4.8 | 4.1 | -2.0 | 4.3 | 5.2 | -4.7 |
| Carpet and textile floor coverings | 0.0 | 1.3 | -2.9 | 0.2 | -0.6 | 0.5 | 0.7 | 1.0 | 0.2 |
| Pulp | -8.5 | -8.6 | 1.4 | 0.2 | -3.3 | 4.3 | 2.0 | 11.7 | 6.4 |
| Paper | -3.6 | 0.0 | -0.9 | -0.8 | 0.5 | -1.1 | 0.6 | 5.7 | 2.2 |
| Fertiliser | 0.2 | 0.2 | 9.3 | 1.8 | 2.2 | 0.2 | 2.7 | 0.1 | 1.6 |
| Ready-mixed concrete | 0.3 | 1.2 | 5.9 | 0.7 | 1.0 | 0.0 | 2.6 | 0.3 | 0.4 |
| Framing timber | 0.0 | 2.5 | 0.0 | 0.7 | -0.1 | -0.1 | -2.1 | 0.8 | 0.8 |
| Electricity: commercial consumers | 0.9 | 4.6 | 0.7 | 3.7 | 1.4 | 3.7 | -0.8 | 11.3 | -6.8 |
| Gas: commercial consumers | 5.1 | 4.6 | 4.3 | 0.5 | 0.1 | -0.1 | 2.5 | 1.7 | 0.8 |
| Road freight | 1.6 | 1.0 | 1.2 | 1.2 | 1.8 | 1.5 | 2.4 | 2.5 | 1.4 |
| International sea freight | -6.0 | -0.5 | 1.0 | 5.5 | 1.8 | 2.2 | -0.7 | 4.3 | -4.0 |
| Finance service charge | 6.5 | -2.0 | -1.8 | -3.6 | -0.9 | 0.2 | -5.9 | 0.8 | -0.1 |
| Bank charges | -0.7 | 1.7 | 0.2 | -0.1 | 0.3 | 2.4 | 1.0 | -0.4 | -0.1 |
| Commercial rent (excl agricultural land) | 0.5 | 0.5 | 0.6 | 0.3 | 1.2 | 0.6 | 0.4 | 1.2 | 0.5 |
| Legal services: personal and corporate | 0.2 | 2.1 | 5.2 | 0.7 | -0.1 | 0.3 | 0.9 | 0.1 | 0.2 |
| Accounting services | 2.8 | 0.5 | 0.2 | 2.3 | 1.6 | 0.2 | 0.1 | 2.2 | 1.2 |

Farm Expenses Price Index: September 2006 quarter

Table 1.01

Farm Expenses Price Index
All farms – index numbers
 Base: December 1992 quarter (=1000)

| Input type | Series ref: FPIQ | Quarter | | | | | | | | |
|--|------------------------|---------|------|------|------|------|------|------|------|------|
| | | 2004 | | 2005 | | | | 2006 | | |
| | | Sep | Dec | Mar | Jun | Sep | Dec | Mar | Jun | Sep |
| Administration | SI9A | 1385 | 1396 | 1401 | 1412 | 1427 | 1431 | 1437 | 1454 | 1466 |
| Animal health and breeding | SI9B | 1270 | 1275 | 1280 | 1291 | 1302 | 1314 | 1328 | 1328 | 1335 |
| Dairy shed expenses | SI9C | 1310 | 1298 | 1323 | 1345 | 1330 | 1352 | 1371 | 1375 | 1384 |
| Electricity | SI9F | 1522 | 1526 | 1526 | 1572 | 1680 | 1746 | 1746 | 1819 | 1822 |
| Feed, grazing, cultivation and harvesting | SI9G | 1325 | 1314 | 1311 | 1330 | 1338 | 1340 | 1347 | 1365 | 1375 |
| Fertiliser, lime and seeds | SI9H | 1034 | 1035 | 1051 | 1072 | 1092 | 1089 | 1109 | 1114 | 1123 |
| Freight | SI9I | 976 | 993 | 1008 | 1013 | 1040 | 1068 | 1084 | 1105 | 1145 |
| Fuel | SI9J | 1382 | 1413 | 1419 | 1541 | 1793 | 1698 | 1765 | 2112 | 2092 |
| Insurance premiums | SI9K | 1353 | 1359 | 1368 | 1369 | 1369 | 1368 | 1369 | 1332 | 1337 |
| Rent and hire | SI9L | 1571 | 1570 | 1573 | 1575 | 1588 | 1591 | 1598 | 1598 | 1598 |
| Repairs, maintenance and motor vehicle repairs | SI9M | 1271 | 1291 | 1305 | 1332 | 1341 | 1350 | 1365 | 1366 | 1390 |
| Packaging costs | SI9N | 1001 | 1004 | 998 | 1002 | 1002 | 1001 | 1000 | 1003 | 1003 |
| Shearing | SI9O | 1464 | 1473 | 1483 | 1506 | 1554 | 1617 | 1635 | 1635 | 1662 |
| Weed and pest control | SI9Q | 1202 | 1198 | 1197 | 1207 | 1218 | 1219 | 1239 | 1245 | 1259 |
| Subtotal excluding livestock | SI9Y | 1261 | 1268 | 1275 | 1300 | 1332 | 1335 | 1351 | 1381 | 1392 |
| Livestock purchases | SI9R | 1508 | 1560 | 1628 | 1663 | 1687 | 1648 | 1591 | 1577 | 1575 |
| Subtotal including livestock | SI9Z | 1300 | 1314 | 1330 | 1356 | 1387 | 1384 | 1388 | 1411 | 1420 |
| Local and central government rates and fees | SI9U | 1313 | 1381 | 1364 | 1364 | 1364 | 1442 | 1442 | 1442 | 1438 |
| Interest rates | SI9V | 803 | 824 | 835 | 854 | 852 | 866 | 877 | 880 | 884 |
| Wages and salaries | SI9W | 1225 | 1234 | 1238 | 1248 | 1255 | 1266 | 1271 | 1276 | 1285 |
| All inputs excluding livestock | SI98 | 1170 | 1183 | 1189 | 1210 | 1231 | 1241 | 1254 | 1274 | 1283 |
| ALL INPUTS INCLUDING LIVESTOCK | SI99 | 1207 | 1223 | 1236 | 1258 | 1280 | 1284 | 1290 | 1306 | 1314 |

Table 1.02

Farm Expenses Price Index
All farms
 Percentage change from previous quarter

| Input type | Series ref: FPIQ | Quarter | | | | | | | | |
|--|------------------------|---------|------|------|-----|------|------|------|------|------|
| | | 2004 | | 2005 | | | | 2006 | | |
| | | Sep | Dec | Mar | Jun | Sep | Dec | Mar | Jun | Sep |
| Administration | SI9A | 0.4 | 0.8 | 0.4 | 0.8 | 1.1 | 0.3 | 0.4 | 1.2 | 0.8 |
| Animal health and breeding | SI9B | -0.1 | 0.4 | 0.4 | 0.9 | 0.9 | 0.9 | 1.1 | 0.0 | 0.5 |
| Dairy shed expenses | SI9C | -0.5 | -0.9 | 1.9 | 1.7 | -1.1 | 1.7 | 1.4 | 0.3 | 0.7 |
| Electricity | SI9F | 3.3 | 0.3 | 0.0 | 3.0 | 6.9 | 3.9 | 0.0 | 4.2 | 0.2 |
| Feed, grazing, cultivation and harvesting | SI9G | 0.8 | -0.8 | -0.2 | 1.4 | 0.6 | 0.1 | 0.5 | 1.3 | 0.7 |
| Fertiliser, lime and seeds | SI9H | -0.5 | 0.1 | 1.5 | 2.0 | 1.9 | -0.3 | 1.8 | 0.5 | 0.8 |
| Freight | SI9I | 1.5 | 1.7 | 1.5 | 0.5 | 2.7 | 2.7 | 1.5 | 1.9 | 3.6 |
| Fuel | SI9J | 6.8 | 2.2 | 0.4 | 8.6 | 16.4 | -5.3 | 3.9 | 19.7 | -0.9 |
| Insurance premiums | SI9K | 0.1 | 0.4 | 0.7 | 0.1 | 0.0 | -0.1 | 0.1 | -2.7 | 0.4 |
| Rent and hire | SI9L | 0.7 | -0.1 | 0.2 | 0.1 | 0.8 | 0.2 | 0.4 | 0.0 | 0.0 |
| Repairs, maintenance and motor vehicle repairs | SI9M | 1.9 | 1.6 | 1.1 | 2.1 | 0.7 | 0.7 | 1.1 | 0.1 | 1.8 |
| Packaging costs | SI9N | 2.4 | 0.3 | -0.6 | 0.4 | 0.0 | -0.1 | -0.1 | 0.3 | 0.0 |
| Shearing | SI9O | 0.9 | 0.6 | 0.7 | 1.6 | 3.2 | 4.1 | 1.1 | 0.0 | 1.7 |
| Weed and pest control | SI9Q | 1.5 | -0.3 | -0.1 | 0.8 | 0.9 | 0.1 | 1.6 | 0.5 | 1.1 |
| Subtotal excluding livestock | SI9Y | 1.3 | 0.6 | 0.6 | 2.0 | 2.5 | 0.2 | 1.2 | 2.2 | 0.8 |
| Livestock purchases | SI9R | 0.9 | 3.4 | 4.4 | 2.1 | 1.4 | -2.3 | -3.5 | -0.9 | -0.1 |
| Subtotal including livestock | SI9Z | 1.2 | 1.1 | 1.2 | 2.0 | 2.3 | -0.2 | 0.3 | 1.7 | 0.6 |
| Local and central government rates and fees | SI9U | -0.4 | 5.2 | -1.2 | 0.0 | 0.0 | 5.7 | 0.0 | 0.0 | -0.3 |
| Interest rates | SI9V | 3.3 | 2.6 | 1.3 | 2.3 | -0.2 | 1.6 | 1.3 | 0.3 | 0.5 |
| Wages and salaries | SI9W | 1.2 | 0.7 | 0.3 | 0.8 | 0.6 | 0.9 | 0.4 | 0.4 | 0.7 |
| All inputs excluding livestock | SI98 | 1.5 | 1.1 | 0.5 | 1.8 | 1.7 | 0.8 | 1.0 | 1.6 | 0.7 |
| ALL INPUTS INCLUDING LIVESTOCK | SI99 | 1.4 | 1.3 | 1.1 | 1.8 | 1.7 | 0.3 | 0.5 | 1.2 | 0.6 |

Farm Expenses Price Index: September 2006

Table 1.03

Farm Expenses Price Index

All farms

Percentage change from same quarter of the previous year

| Input type | Series ref: FPIQ | 2004 | | 2005 | | | | 2006 | | |
|--|------------------------|------|------|------|------|------|------|------|------|------|
| | | Sep | Dec | Mar | Jun | Sep | Dec | Mar | Jun | Sep |
| Administration | SI9A | 4.6 | 5.1 | 4.8 | 2.4 | 3.0 | 2.5 | 2.6 | 3.0 | 2.7 |
| Animal health and breeding | SI9B | 1.9 | 1.5 | 2.1 | 1.6 | 2.5 | 3.1 | 3.8 | 2.9 | 2.5 |
| Dairy shed expenses | SI9C | 1.1 | 0.2 | 1.7 | 2.2 | 1.5 | 4.2 | 3.6 | 2.2 | 4.1 |
| Electricity | SI9F | 6.2 | 5.2 | 5.4 | 6.6 | 10.4 | 14.4 | 14.4 | 15.7 | 8.5 |
| Feed, grazing, cultivation and harvesting | SI9G | 1.4 | 0.8 | 0.5 | 1.2 | 1.0 | 2.0 | 2.7 | 2.6 | 2.8 |
| Fertiliser, lime and seeds | SI9H | -1.7 | -0.6 | 2.0 | 3.2 | 5.6 | 5.2 | 5.5 | 3.9 | 2.8 |
| Freight | SI9I | 2.4 | 4.6 | 6.1 | 5.3 | 6.6 | 7.6 | 7.5 | 9.1 | 10.1 |
| Fuel | SI9J | 17.6 | 20.9 | 20.8 | 19.1 | 29.7 | 20.2 | 24.4 | 37.1 | 16.7 |
| Insurance premiums | SI9K | 1.3 | 1.3 | 1.6 | 1.3 | 1.2 | 0.7 | 0.1 | -2.7 | -2.3 |
| Rent and hire | SI9L | 0.8 | 0.7 | 0.8 | 1.0 | 1.1 | 1.3 | 1.6 | 1.5 | 0.6 |
| Repairs, maintenance and motor vehicle repairs | SI9M | 4.5 | 5.6 | 5.5 | 6.8 | 5.5 | 4.6 | 4.6 | 2.6 | 3.7 |
| Packaging costs | SI9N | 3.8 | 3.9 | 3.4 | 2.5 | 0.1 | -0.3 | 0.2 | 0.1 | 0.1 |
| Shearing | SI9O | 3.6 | 2.5 | 2.7 | 3.8 | 6.1 | 9.8 | 10.2 | 8.6 | 6.9 |
| Weed and pest control | SI9Q | 1.8 | 1.1 | 1.1 | 1.9 | 1.3 | 1.8 | 3.5 | 3.1 | 3.4 |
| Subtotal excluding livestock | SI9R | 1.1 | 5.6 | 9.6 | 11.2 | 11.9 | 5.6 | -2.3 | -5.2 | -6.6 |
| Livestock purchases | SI9Y | 3.3 | 3.7 | 4.0 | 4.4 | 5.6 | 5.3 | 6.0 | 6.2 | 4.5 |
| Subtotal including livestock | SI9Z | 2.9 | 4.1 | 5.1 | 5.6 | 6.7 | 5.3 | 4.4 | 4.1 | 2.4 |
| Local and central government rates and fees | SI9U | 1.9 | 4.8 | 3.5 | 3.5 | 3.9 | 4.4 | 5.7 | 5.7 | 5.4 |
| Interest rates | SI9V | 6.1 | 9.6 | 9.9 | 9.9 | 6.1 | 5.1 | 5.0 | 3.0 | 3.8 |
| Wages and salaries | SI9W | 2.8 | 3.4 | 3.3 | 3.1 | 2.4 | 2.6 | 2.7 | 2.2 | 2.4 |
| All inputs excluding livestock | SI98 | 3.5 | 4.5 | 4.7 | 4.9 | 5.2 | 4.9 | 5.5 | 5.3 | 4.2 |
| ALL INPUTS INCLUDING LIVESTOCK | SI99 | 3.3 | 4.6 | 5.4 | 5.7 | 6.0 | 5.0 | 4.4 | 3.8 | 2.7 |

Farm Expenses Price Index: September 2006 quarter

Table 2

Farm Expenses Price Index
Sheep and beef farms – index numbers
 Base: December 1992 quarter (=1000)

| Input type | Series ref: FPIQ | Quarter | | | | | | | | |
|--|------------------------|---------|------|------|------|------|------|------|------|------|
| | | 2004 | | 2005 | | | | 2006 | | |
| | | Sep | Dec | Mar | Jun | Sep | Dec | Mar | Jun | Sep |
| Administration | SI3A | 1417 | 1429 | 1434 | 1442 | 1465 | 1469 | 1474 | 1499 | 1512 |
| Animal health and breeding | SI3B | 1228 | 1230 | 1232 | 1246 | 1248 | 1266 | 1290 | 1292 | 1287 |
| Electricity | SI3F | 1461 | 1465 | 1465 | 1509 | 1612 | 1676 | 1676 | 1746 | 1749 |
| Feed, grazing, cultivation and harvesting | SI3G | 1416 | 1397 | 1391 | 1419 | 1412 | 1414 | 1430 | 1453 | 1454 |
| Fertiliser, lime and seeds | SI3H | 1025 | 1024 | 1042 | 1064 | 1086 | 1082 | 1104 | 1107 | 1116 |
| Freight | SI3I | 976 | 993 | 1008 | 1013 | 1040 | 1068 | 1084 | 1105 | 1145 |
| Fuel | SI3J | 1382 | 1413 | 1419 | 1541 | 1793 | 1698 | 1765 | 2112 | 2092 |
| Insurance premiums | SI3K | 1330 | 1336 | 1362 | 1361 | 1362 | 1361 | 1362 | 1314 | 1317 |
| Rent and hire | SI3L | 1599 | 1599 | 1600 | 1602 | 1613 | 1615 | 1620 | 1621 | 1621 |
| Repairs, maintenance and motor vehicle repairs | SI3M | 1271 | 1291 | 1305 | 1332 | 1341 | 1350 | 1365 | 1366 | 1390 |
| Shearing | SI3O | 1464 | 1473 | 1483 | 1506 | 1554 | 1617 | 1635 | 1635 | 1662 |
| Weed and pest control | SI3Q | 1273 | 1268 | 1266 | 1271 | 1285 | 1290 | 1314 | 1320 | 1337 |
| Subtotal excluding livestock | SI3Y | 1285 | 1294 | 1303 | 1331 | 1369 | 1376 | 1396 | 1429 | 1441 |
| Livestock purchases | SI3R | 1719 | 1762 | 1830 | 1841 | 1855 | 1827 | 1725 | 1707 | 1704 |
| Subtotal including livestock | SI3Z | 1364 | 1379 | 1399 | 1424 | 1458 | 1458 | 1456 | 1480 | 1489 |
| Local and central government rates and fees | SI3U | 1318 | 1400 | 1383 | 1383 | 1383 | 1469 | 1469 | 1469 | 1465 |
| Interest rates | SI3V | 803 | 825 | 836 | 853 | 850 | 865 | 876 | 879 | 883 |
| Wages and salaries | SI3W | 1225 | 1234 | 1238 | 1248 | 1255 | 1266 | 1271 | 1276 | 1285 |
| All inputs excluding livestock | SI38 | 1183 | 1198 | 1206 | 1229 | 1254 | 1266 | 1282 | 1305 | 1314 |
| ALL INPUTS INCLUDING LIVESTOCK | SI39 | 1252 | 1270 | 1286 | 1307 | 1331 | 1338 | 1339 | 1357 | 1364 |

Table 3

Farm Expenses Price Index
Dairy farms – index numbers
 Base: December 1992 quarter (=1000)

| Input type | Series ref: FPIQ | Quarter | | | | | | | | |
|--|------------------------|---------|------|------|------|------|------|------|------|------|
| | | 2004 | | 2005 | | | | 2006 | | |
| | | Sep | Dec | Mar | Jun | Sep | Dec | Mar | Jun | Sep |
| Administration | SI4A | 1367 | 1376 | 1383 | 1389 | 1392 | 1394 | 1400 | 1413 | 1423 |
| Animal health and breeding | SI4B | 1337 | 1348 | 1356 | 1365 | 1386 | 1391 | 1391 | 1390 | 1411 |
| Dairy shed expenses | SI4C | 1310 | 1298 | 1323 | 1345 | 1330 | 1352 | 1371 | 1375 | 1384 |
| Miscellaneous expenses | SI4D | 1182 | 1187 | 1192 | 1203 | 1224 | 1242 | 1250 | 1265 | 1280 |
| Electricity | SI4F | 1649 | 1653 | 1653 | 1703 | 1820 | 1892 | 1892 | 1971 | 1974 |
| Feed, grazing, cultivation and harvesting | SI4G | 1367 | 1342 | 1335 | 1355 | 1367 | 1359 | 1359 | 1381 | 1399 |
| Fertiliser, lime and seeds | SI4H | 1025 | 1024 | 1042 | 1064 | 1086 | 1082 | 1104 | 1107 | 1116 |
| Freight | SI4I | 976 | 993 | 1008 | 1013 | 1040 | 1068 | 1084 | 1105 | 1145 |
| Fuel | SI4J | 1382 | 1413 | 1419 | 1541 | 1793 | 1698 | 1765 | 2112 | 2092 |
| Insurance premiums | SI4K | 1423 | 1425 | 1420 | 1426 | 1427 | 1426 | 1427 | 1393 | 1396 |
| Rent and hire | SI4L | 1602 | 1602 | 1603 | 1605 | 1613 | 1616 | 1620 | 1621 | 1621 |
| Repairs, maintenance and motor vehicle repairs | SI4M | 1271 | 1291 | 1305 | 1332 | 1341 | 1350 | 1365 | 1366 | 1390 |
| Weed and pest control | SI4Q | 1255 | 1250 | 1248 | 1251 | 1265 | 1271 | 1293 | 1297 | 1314 |
| Subtotal excluding livestock | SI4Y | 1292 | 1296 | 1303 | 1327 | 1356 | 1357 | 1369 | 1395 | 1408 |
| Livestock purchases | SI4R | 970 | 1012 | 1018 | 1127 | 1185 | 1178 | 1180 | 1214 | 1216 |
| Subtotal including livestock | SI4Z | 1244 | 1254 | 1261 | 1297 | 1331 | 1330 | 1341 | 1368 | 1380 |
| Local and central government rates and fees | SI4U | 1301 | 1344 | 1328 | 1328 | 1328 | 1378 | 1378 | 1378 | 1374 |
| Interest rates | SI4V | 787 | 802 | 813 | 832 | 832 | 843 | 854 | 857 | 862 |
| Wages and salaries | SI4W | 1225 | 1234 | 1238 | 1248 | 1255 | 1266 | 1271 | 1276 | 1285 |
| All inputs excluding livestock | SI48 | 1153 | 1161 | 1168 | 1189 | 1207 | 1213 | 1224 | 1241 | 1252 |
| ALL INPUTS INCLUDING LIVESTOCK | SI49 | 1135 | 1147 | 1154 | 1183 | 1205 | 1210 | 1220 | 1239 | 1248 |

Farm Expenses Price Index: September 2006 quarter

Table 4

Farm Expenses Price Index
Horticultural farms – index numbers
 Base: December 1992 quarter (=1000)

| Input type | Series ref: FPIQ | Quarter | | | | | | | | |
|--|------------------------|---------|------|------|------|------|------|------|------|------|
| | | 2004 | | 2005 | | | | 2006 | | |
| | | Sep | Dec | Mar | Jun | Sep | Dec | Mar | Jun | Sep |
| Administration | SI6A | 1322 | 1328 | 1332 | 1355 | 1364 | 1369 | 1377 | 1382 | 1393 |
| Animal health and breeding | SI6B | 1228 | 1230 | 1232 | 1246 | 1248 | 1266 | 1290 | 1292 | 1287 |
| Electricity | SI6F | 1436 | 1440 | 1440 | 1484 | 1585 | 1648 | 1648 | 1717 | 1719 |
| Feed, grazing, cultivation and harvesting | SI6G | 1234 | 1243 | 1250 | 1272 | 1299 | 1312 | 1326 | 1349 | 1354 |
| Fertiliser, lime and seeds | SI6H | 1089 | 1099 | 1107 | 1122 | 1130 | 1128 | 1142 | 1154 | 1168 |
| Freight | SI6I | 976 | 993 | 1008 | 1013 | 1040 | 1068 | 1084 | 1105 | 1145 |
| Fuel | SI6J | 1382 | 1413 | 1419 | 1541 | 1793 | 1698 | 1765 | 2112 | 2092 |
| Insurance premiums | SI6K | 1236 | 1245 | 1230 | 1240 | 1232 | 1230 | 1232 | 1210 | 1226 |
| Rent and hire | SI6L | 1498 | 1497 | 1503 | 1506 | 1525 | 1532 | 1541 | 1542 | 1543 |
| Repairs, maintenance and motor vehicle repairs | SI6M | 1271 | 1291 | 1305 | 1332 | 1341 | 1350 | 1365 | 1366 | 1390 |
| Packaging costs | SI6N | 1001 | 1005 | 999 | 1003 | 1002 | 1002 | 1001 | 1003 | 1004 |
| Weed and pest control | SI6Q | 1106 | 1103 | 1105 | 1121 | 1128 | 1124 | 1139 | 1144 | 1155 |
| Subtotal excluding livestock | SI6Y | 1159 | 1167 | 1169 | 1189 | 1212 | 1212 | 1223 | 1249 | 1257 |
| Livestock purchases | SI6R | 1504 | 1568 | 1653 | 1686 | 1707 | 1650 | 1621 | 1599 | 1596 |
| Subtotal including livestock | SI6Z | 1168 | 1177 | 1182 | 1202 | 1225 | 1223 | 1233 | 1258 | 1266 |
| Local and central government rates and fees | SI6U | 1509 | 1595 | 1579 | 1579 | 1579 | 1696 | 1696 | 1696 | 1692 |
| Interest rates | SI6V | 821 | 841 | 852 | 883 | 882 | 896 | 908 | 910 | 913 |
| Wages and salaries | SI6W | 1225 | 1234 | 1238 | 1248 | 1255 | 1266 | 1271 | 1276 | 1285 |
| All inputs excluding livestock | SI68 | 1140 | 1150 | 1154 | 1172 | 1189 | 1195 | 1205 | 1222 | 1230 |
| ALL INPUTS INCLUDING LIVESTOCK | SI69 | 1146 | 1157 | 1162 | 1181 | 1198 | 1202 | 1212 | 1229 | 1236 |

Table 5

Farm Expenses Price Index
Cropping and other farms – index numbers
 Base: December 1992 quarter (=1000)

| Input type | Series ref: FPIQ | Quarter | | | | | | | | |
|---|------------------------|---------|------|------|------|------|------|------|------|------|
| | | 2004 | | 2005 | | | | 2006 | | |
| | | Sep | Dec | Mar | Jun | Sep | Dec | Mar | Jun | Sep |
| Administration | SI8A | 1386 | 1394 | 1405 | 1413 | 1429 | 1433 | 1440 | 1451 | 1461 |
| Animal health and breeding | SI8B | 1144 | 1143 | 1145 | 1153 | 1161 | 1170 | 1196 | 1195 | 1191 |
| Electricity | SI8F | 1422 | 1425 | 1425 | 1469 | 1569 | 1631 | 1631 | 1700 | 1702 |
| Feed, grazing, cultivation and harvesting | SI8G | 1257 | 1256 | 1255 | 1263 | 1270 | 1276 | 1280 | 1286 | 1298 |
| Fertiliser, lime and seeds | SI8H | 1025 | 1024 | 1042 | 1064 | 1086 | 1082 | 1104 | 1107 | 1116 |
| Freight | SI8I | 976 | 993 | 1008 | 1013 | 1040 | 1068 | 1084 | 1105 | 1145 |
| Fuel | SI8J | 1382 | 1413 | 1419 | 1541 | 1793 | 1698 | 1765 | 2112 | 2092 |
| Insurance premiums | SI8K | 1452 | 1457 | 1451 | 1441 | 1442 | 1445 | 1446 | 1431 | 1434 |
| Rent and hire | SI8L | 1567 | 1567 | 1570 | 1572 | 1585 | 1589 | 1596 | 1596 | 1597 |
| Repairs, maintenance, motor vehicle repairs | SI8M | 1271 | 1291 | 1305 | 1332 | 1341 | 1350 | 1365 | 1366 | 1390 |
| Packaging costs | SI8N | 991 | 995 | 989 | 993 | 991 | 991 | 990 | 993 | 995 |
| Shearing | SI8O | 1464 | 1473 | 1483 | 1506 | 1554 | 1617 | 1635 | 1635 | 1662 |
| Weed and pest control | SI8Q | 1273 | 1268 | 1266 | 1271 | 1285 | 1290 | 1314 | 1320 | 1337 |
| Subtotal excluding livestock | SI8Y | 1271 | 1276 | 1281 | 1299 | 1329 | 1330 | 1344 | 1372 | 1382 |
| Livestock purchases | SI8R | 1530 | 1618 | 1754 | 1775 | 1789 | 1682 | 1680 | 1621 | 1621 |
| Subtotal including livestock | SI8Z | 1334 | 1360 | 1396 | 1415 | 1441 | 1416 | 1425 | 1433 | 1440 |
| Local and central government rates and fees | SI8U | 1214 | 1260 | 1244 | 1244 | 1244 | 1313 | 1313 | 1313 | 1309 |
| Interest rates | SI8V | 837 | 868 | 879 | 898 | 894 | 911 | 921 | 924 | 927 |
| Wages and salaries | SI8W | 1225 | 1234 | 1238 | 1248 | 1255 | 1266 | 1271 | 1276 | 1285 |
| All inputs excluding livestock | SI88 | 1216 | 1227 | 1231 | 1247 | 1268 | 1277 | 1288 | 1309 | 1318 |
| ALL INPUTS INCLUDING LIVESTOCK | SI89 | 1275 | 1300 | 1329 | 1346 | 1366 | 1353 | 1362 | 1368 | 1374 |