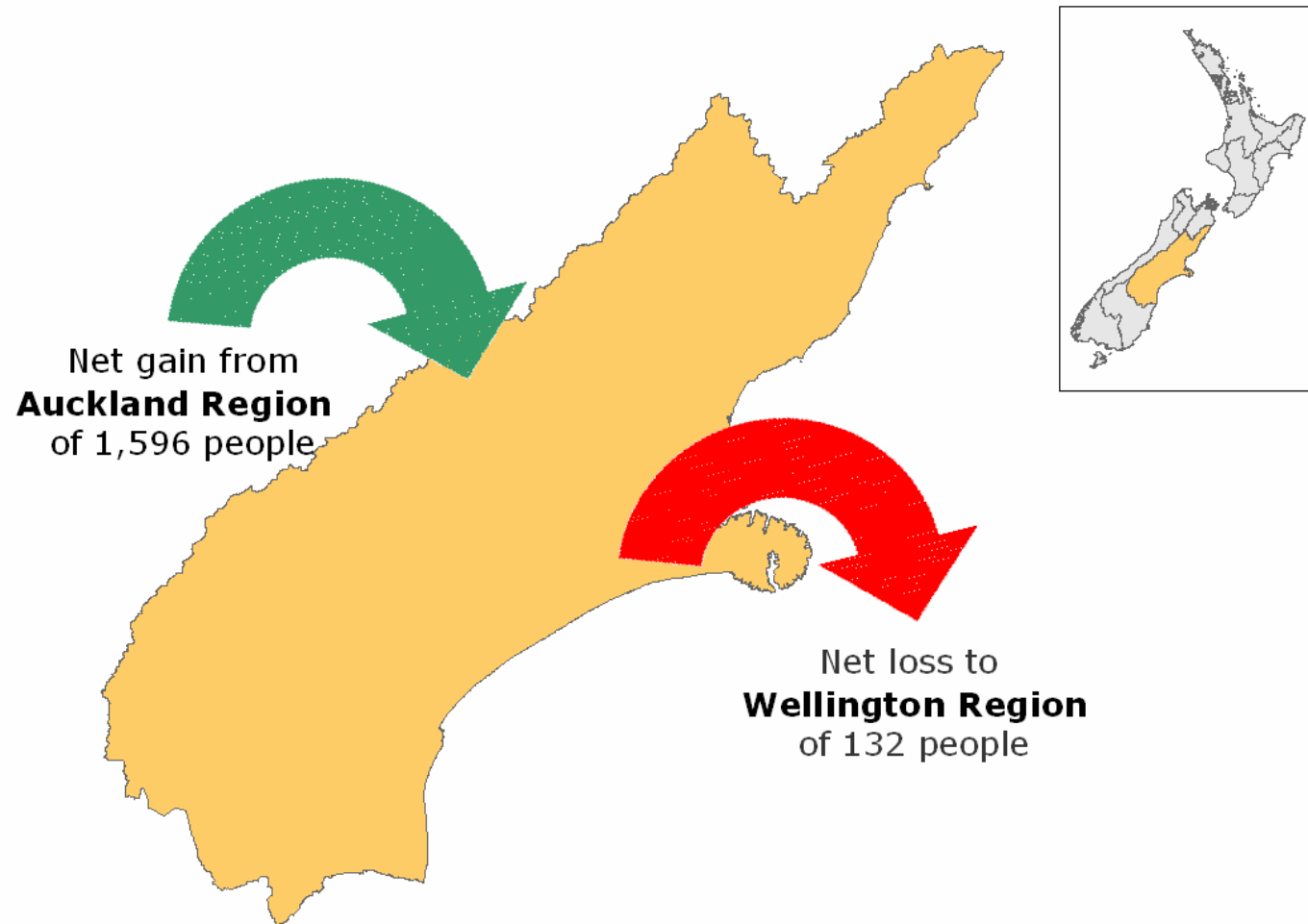


What we look like locally



Net Migration for Canterbury Region

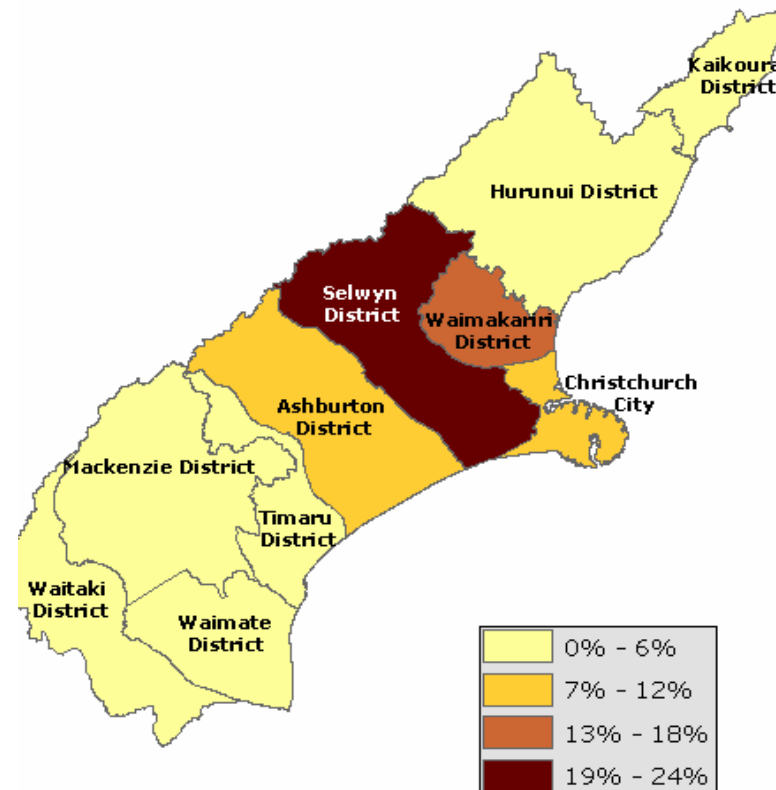


Usually Resident Population

Percentage change from 2001

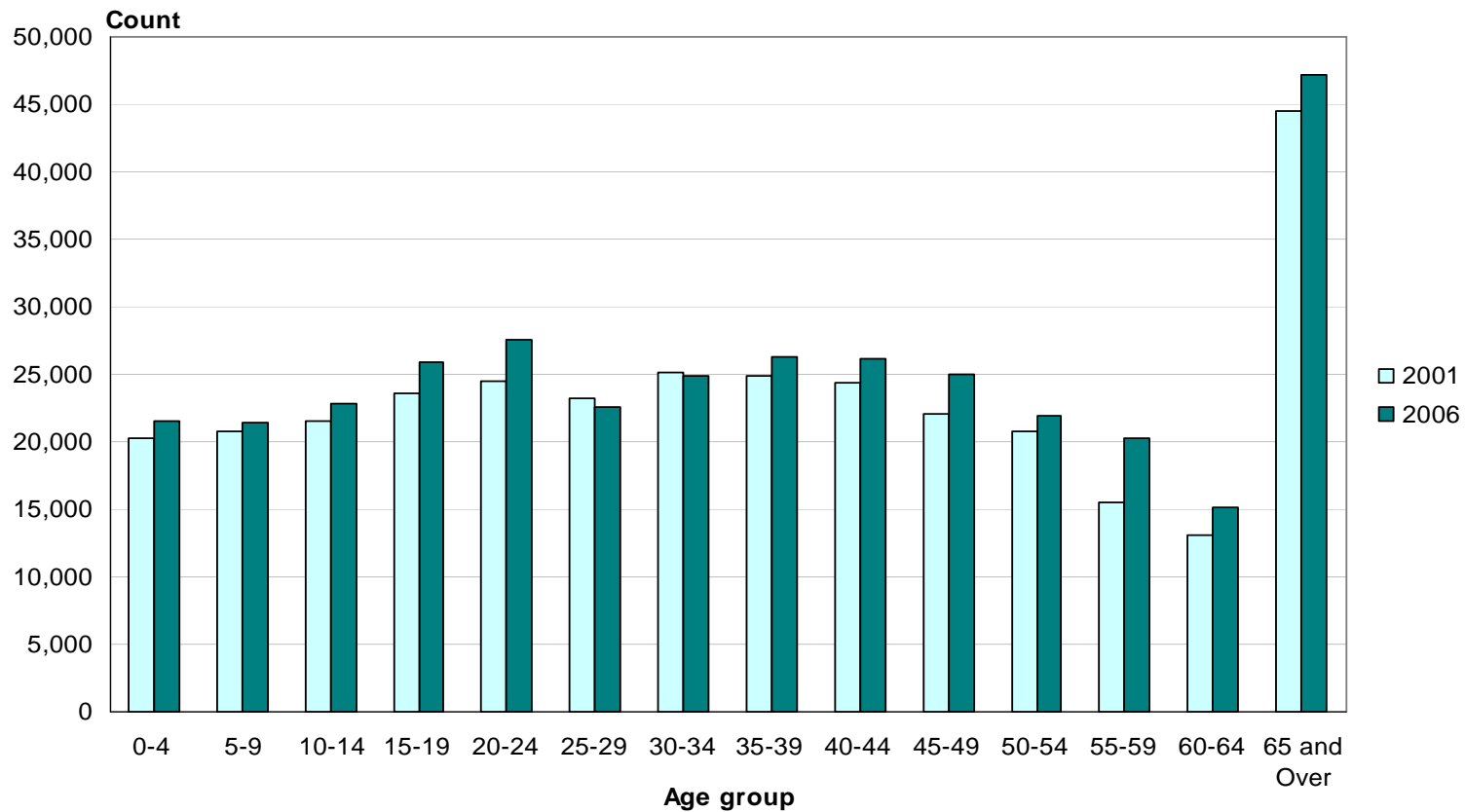
o Canterbury Region
521,832

o Christchurch City
348,435



Age (5 years)

Christchurch City, 2001 and 2006 Censuses



Median age for Christchurch City 36.2 years

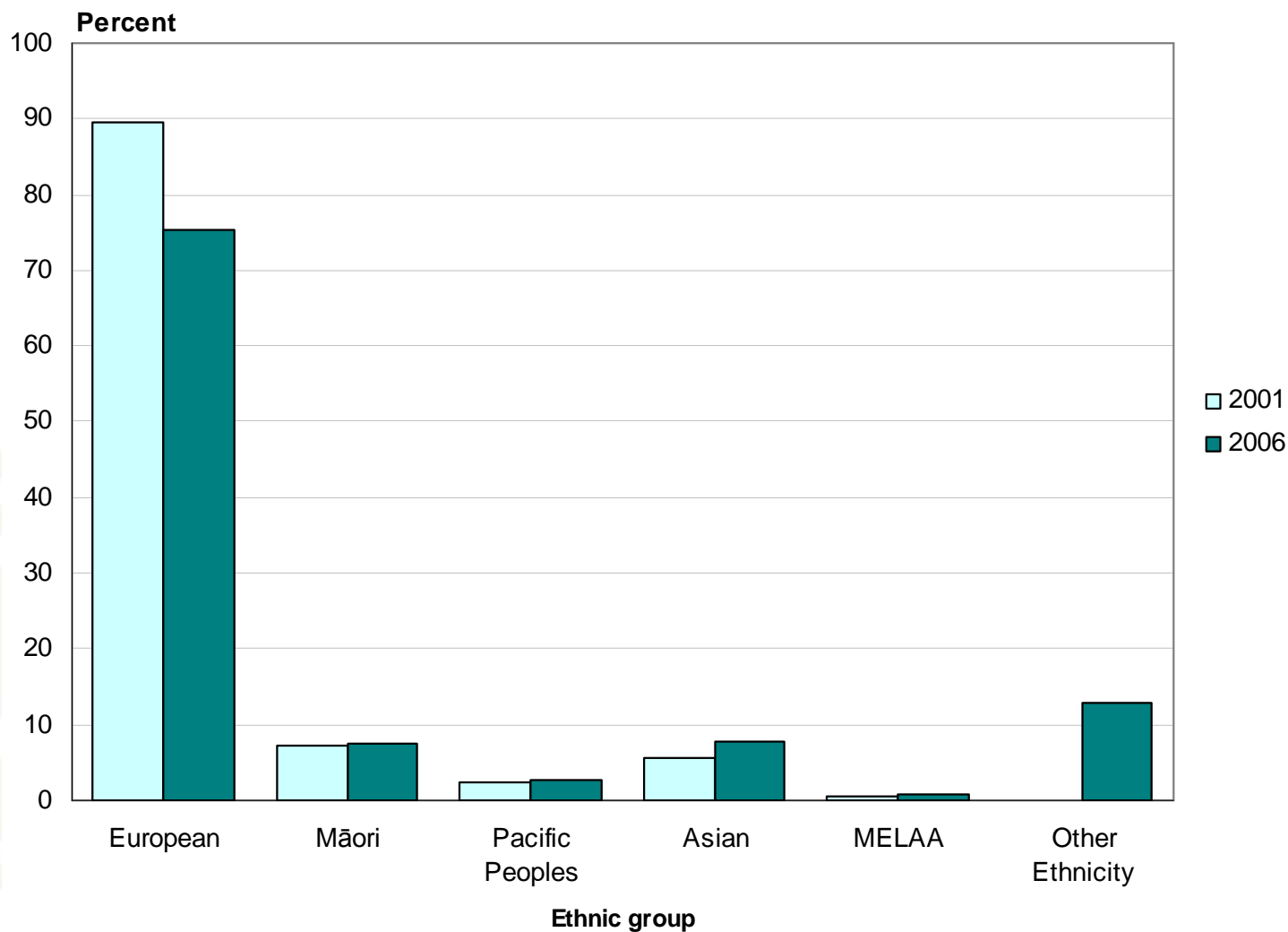
Who needs a holiday programme?

- Number of children under 15 years
 - o Canterbury Region 102,486
 - o Christchurch City 65,670

	0 - 4 Years	5 - 9 Years	10 - 14 Years	Total
Aranui	390	423	450	1,266
Parklands	420	405	360	1,191
Rutland	426	399	336	1,161
Aorangi	342	333	348	1,023
Hillmorton	333	336	351	1,020
North Beach	351	306	321	978
Travis Wetland	345	324	303	972

Ethnic Group

Christchurch City, 2001 and 2006 Censuses



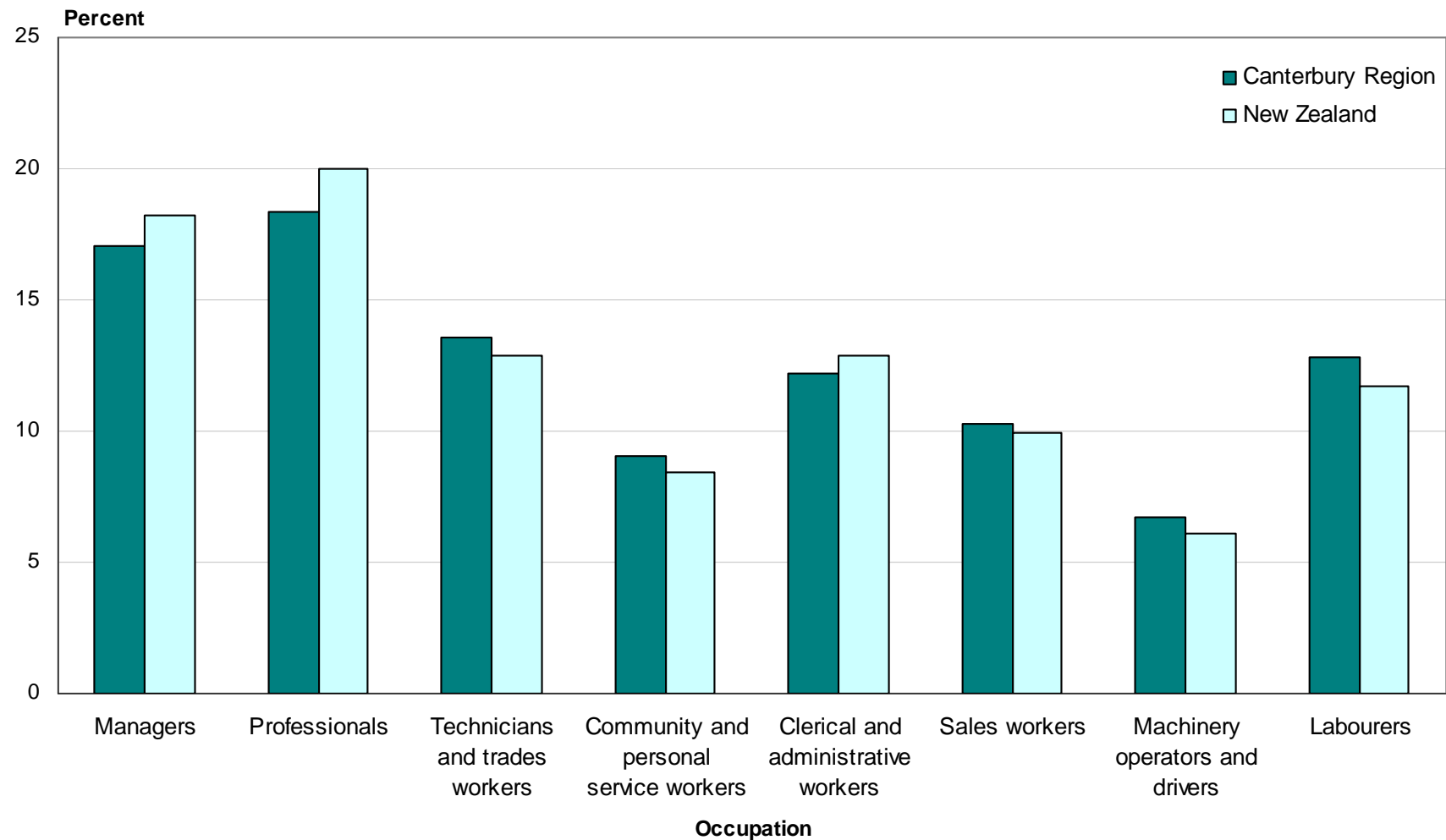
Religious Affiliation (percent)

Canterbury Region and New Zealand, 2006 Census

	Region	NZ
Christian (not including Māori Christian)	60.1	58.0
No Religion	38.7	37.1
Māori Christian	0.6	1.9
Hindu	0.5	1.8
Buddhist	1.1	1.5
Islam/Muslim	0.6	1.0
Other Religions	0.4	0.7
Spiritualism and New Age Religions	0.6	0.6
Judaism/Jewish	0.1	0.2

Occupation (ANZSCO)

Canterbury Region and New Zealand, 2006 Census



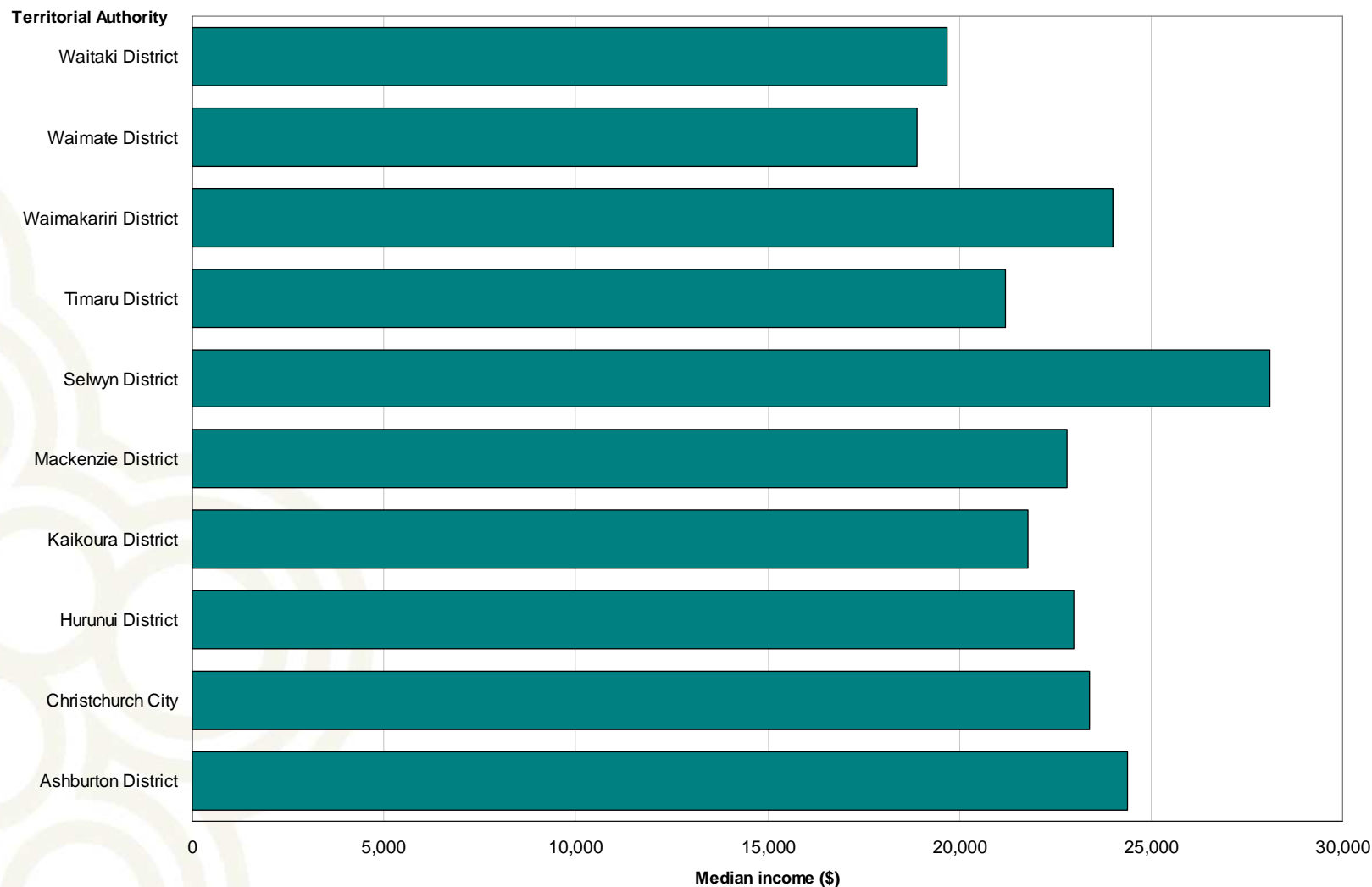
Unpaid Activities

Canterbury Region and New Zealand, 2006 Census

	Region	NZ
Helping someone who is ill or has a disability who does not live in own household	9.2	9.1
Household work for own household	86.3	86.1
Looking after a child who does not live in own household	16.5	16.2
Looking after a child who is a member of own household	29.9	31.6
Looking after a member of own household who is ill or has a disability	7.2	7.8
No activities	11.2	11.3
Other helping or voluntary work	15.1	15.4

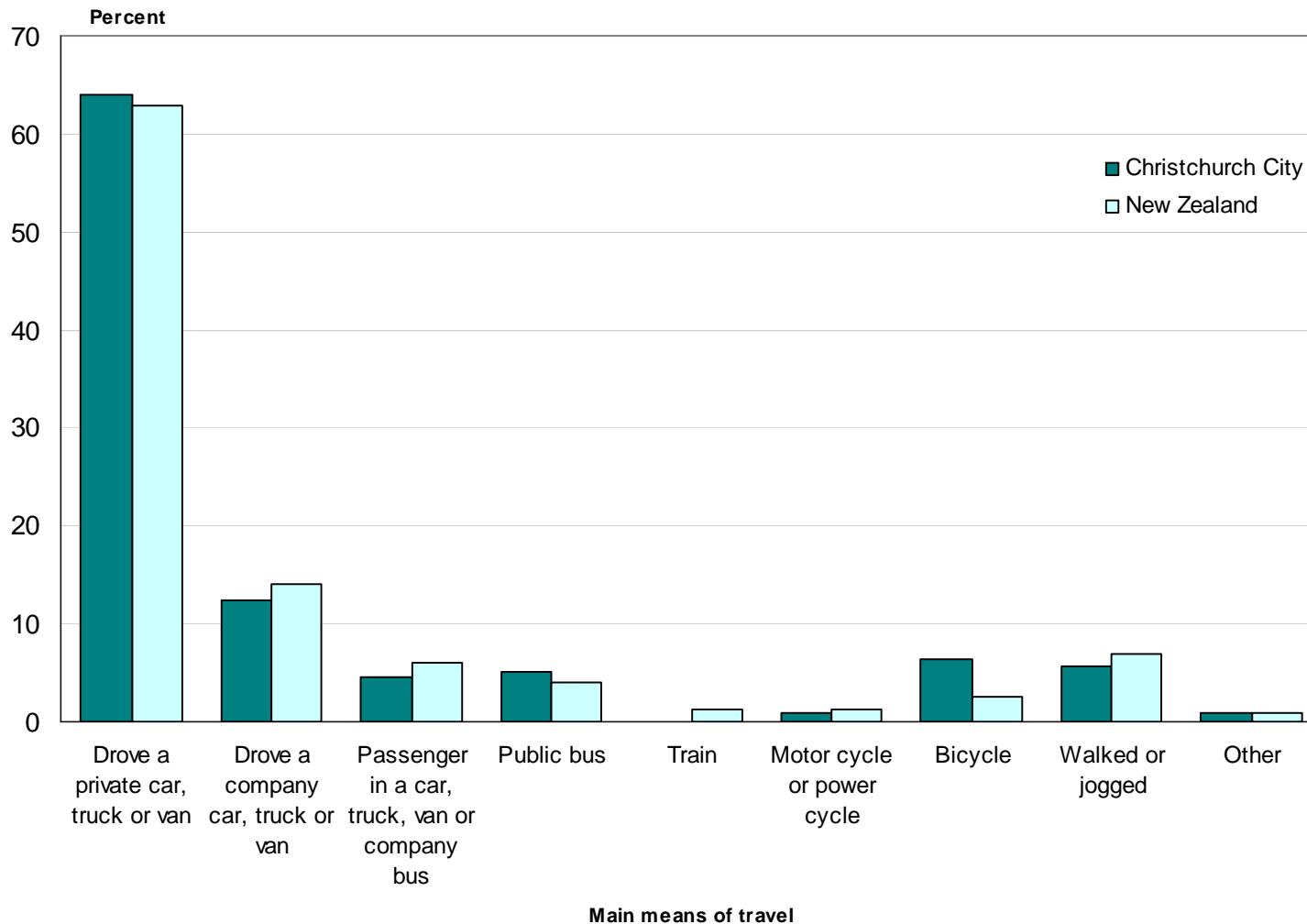
Median Personal Income

Territorial Authorities in Canterbury Region, 2006 Census



Main Means of Travel to Work

Christchurch City and New Zealand, 2006 Census



Private occupied dwellings

New Zealand 1,471,746

- 8.2 percent increase from 2001

Canterbury Region 201,657

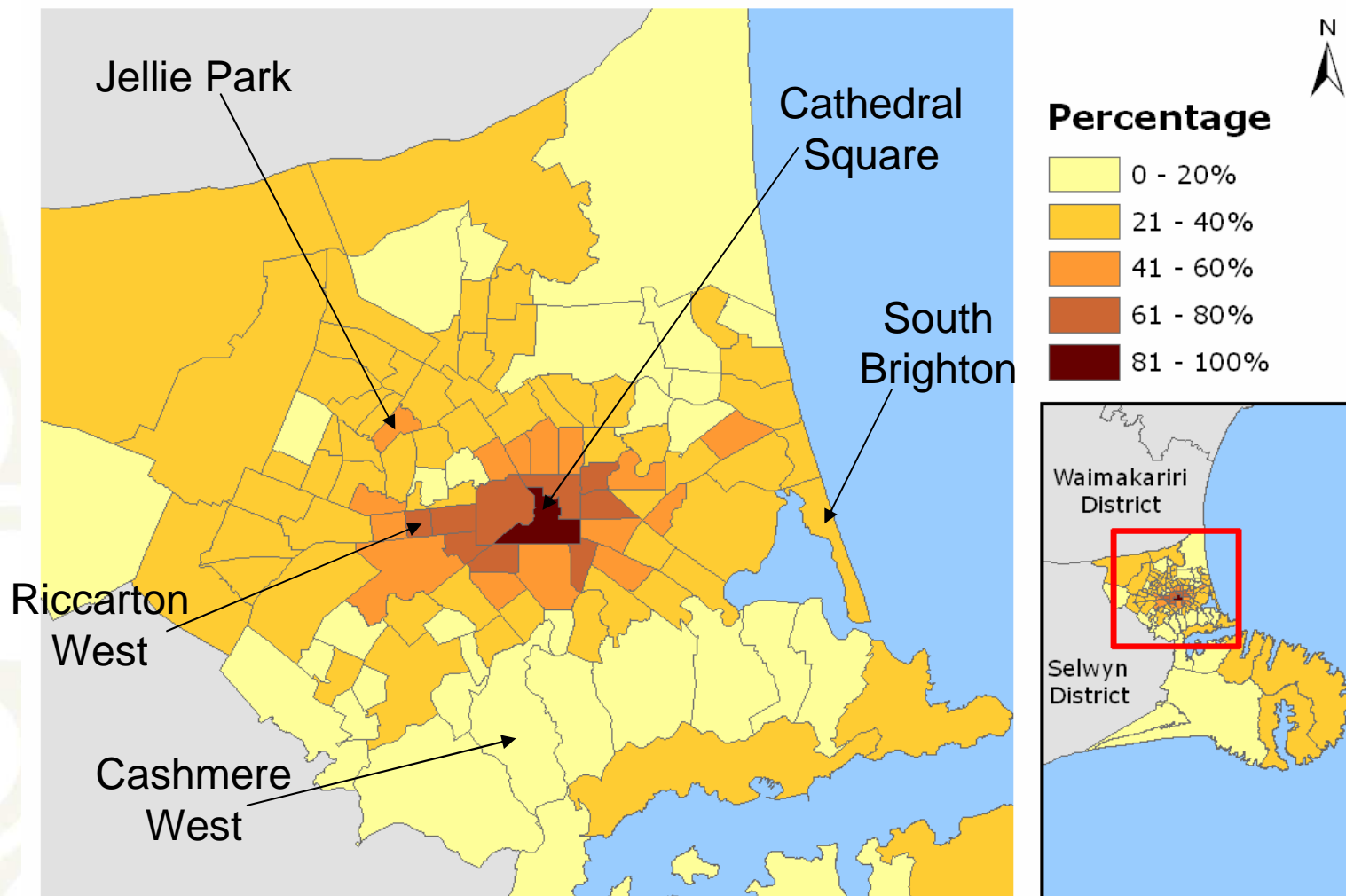
- 8.2 percent increase from 2001

Christchurch City 134,721

- 6.9 percent increase from 2001

Dwellings Not Owned by Usual Resident(s)

Christchurch City (Area Unit), 2006 Census



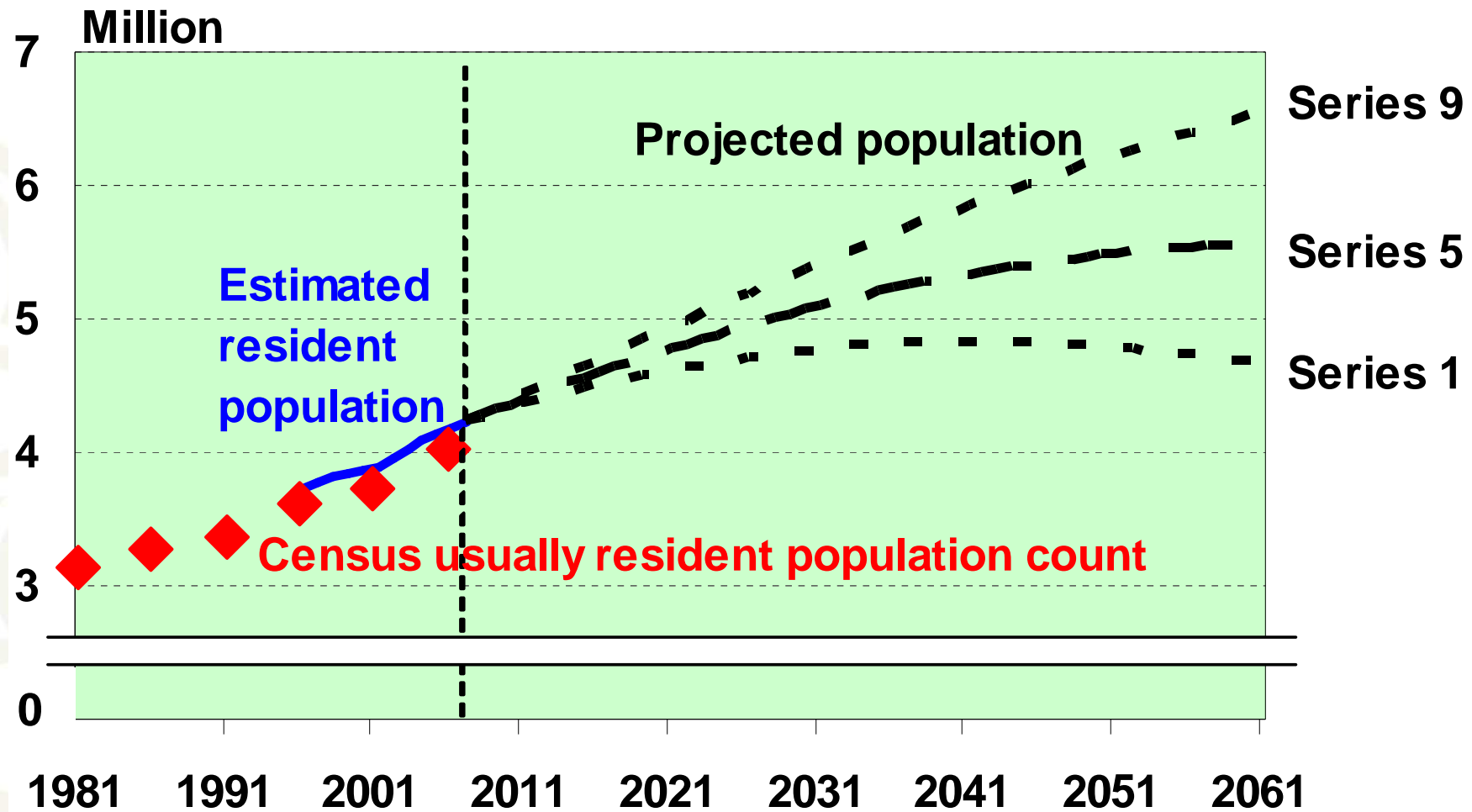
Population estimates and projections

A decorative graphic in the bottom-left corner consisting of several overlapping, light-colored circles of varying sizes, creating a pattern that resembles a stylized map or a cluster of data points.

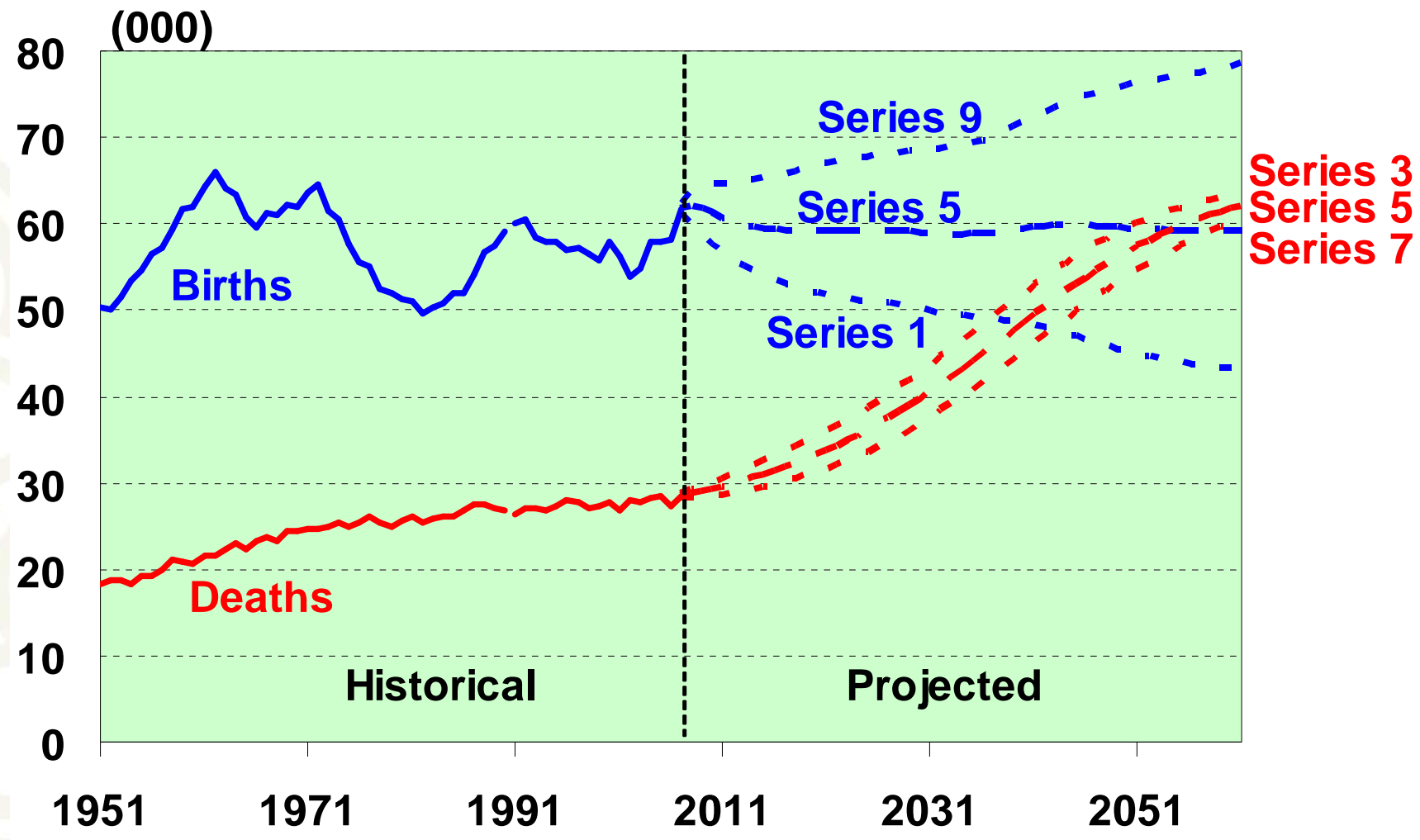
Estimated resident population

- The best measure of who lives in an area
- A census base (excluding overseas visitors) adjusted for:
 - o Net census undercount
 - o Residents temporarily overseas
 - o Births, deaths and net migration to 30 June 2006
- Limited variables (age, sex, ethnicity)
- Provides base for population projections

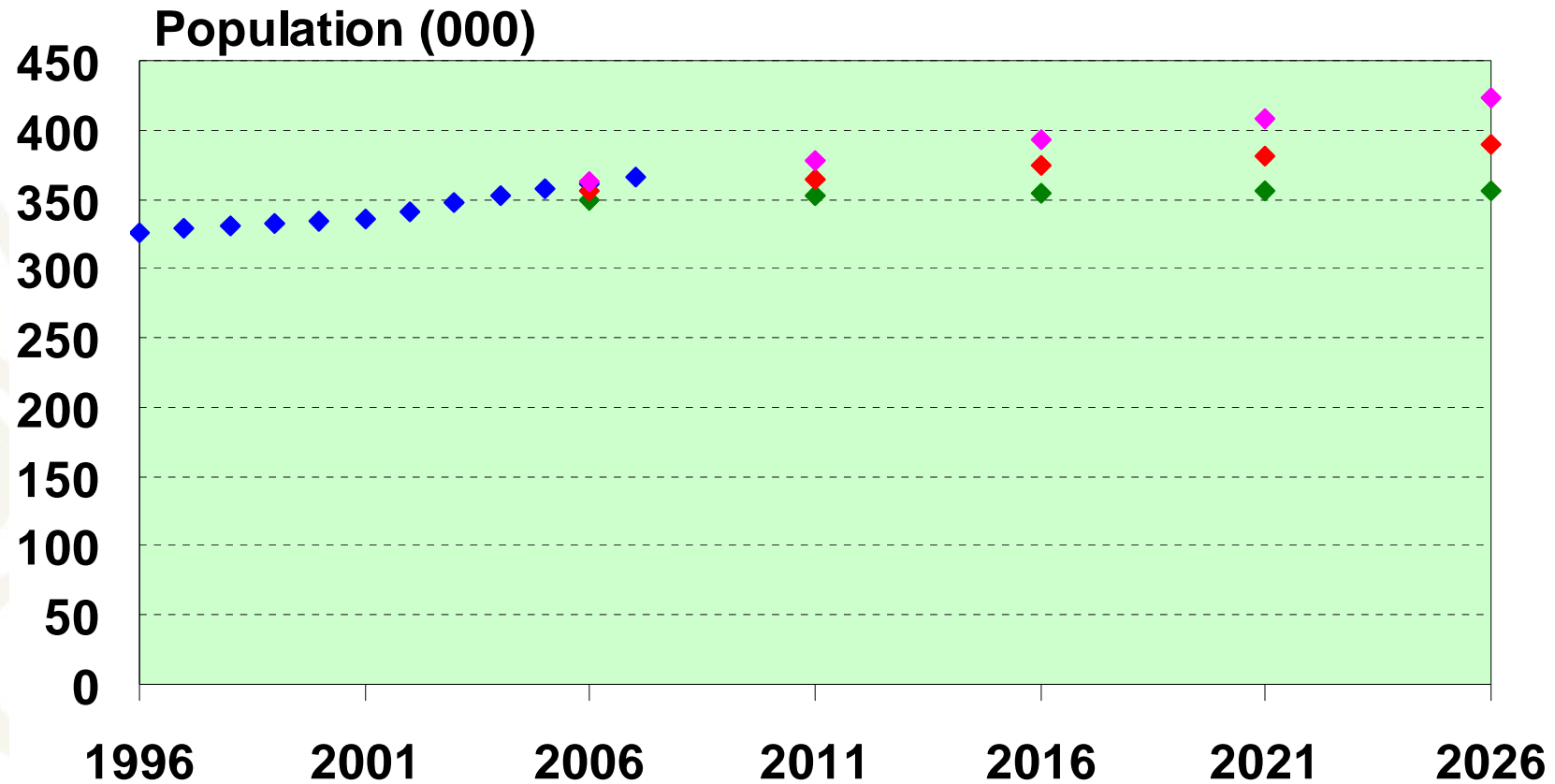
New Zealand population



New Zealand shrinking natural increase

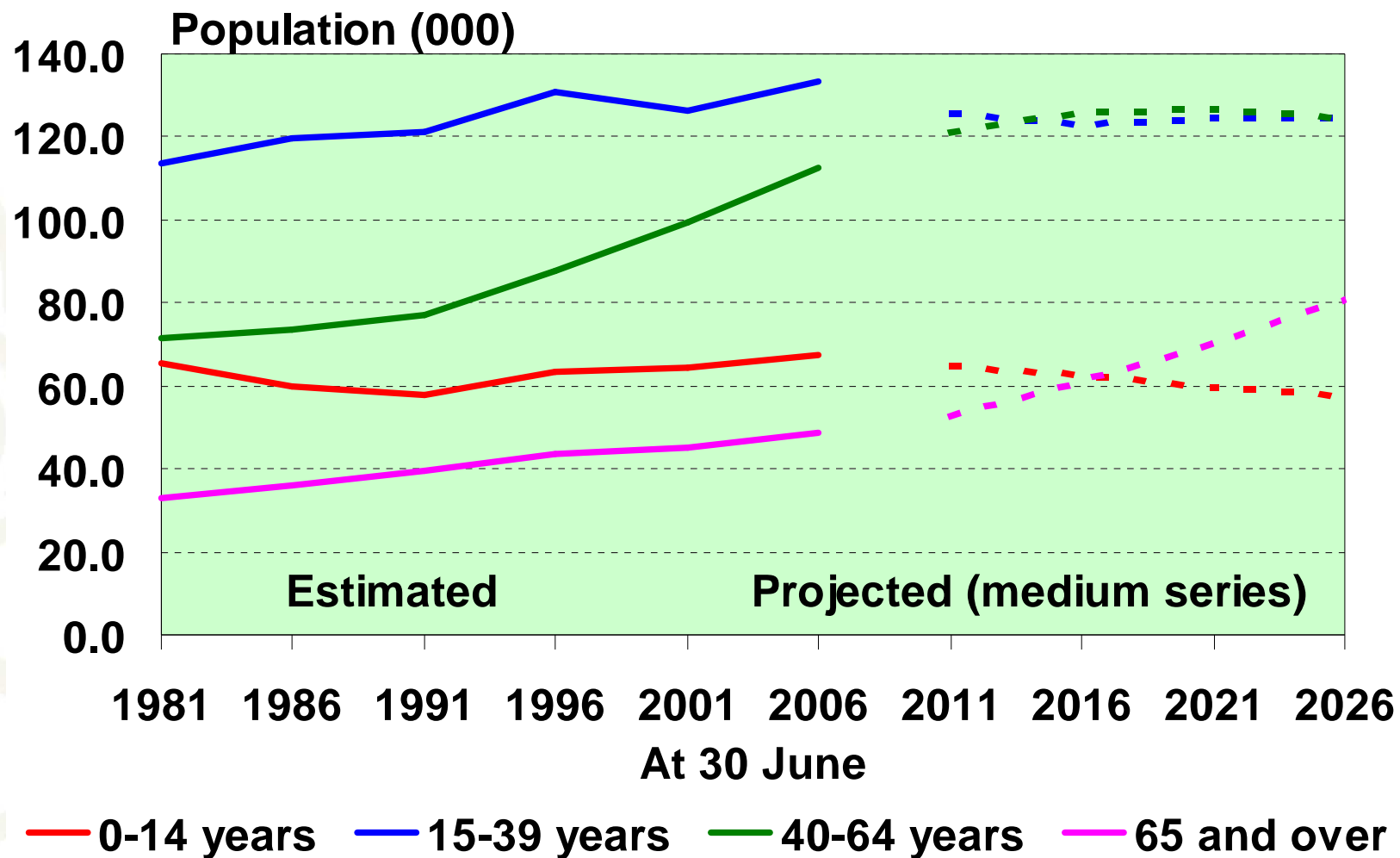


Population of Christchurch City



- ◆ Estimated resident population
- ◆ Low population projection
- ◆ Medium population projection
- ◆ High population projection

Christchurch City: growth in older ages



Key release dates: 2006-base population estimates

21 August 2007: first 2006-base population estimates

June 2006 data on Table Builder

- o National and subnational estimates June 2006
- o Area unit estimates June 2006 (NEW)
- o National estimates June 2007 Quarter

23 October 2007

- o Subnational estimates June 2007

December 2007

- o Area unit estimates June 2007 (NEW)

Population Projections – release dates

- National population projections: 24 October 2007
- Subnational population projections: 3 December 2007
- National ethnic projections: 2 April 2008
- National labour force projections: 6 May 2008
- Area unit population projections: mid 2008
- Family and household projections: 2008/09