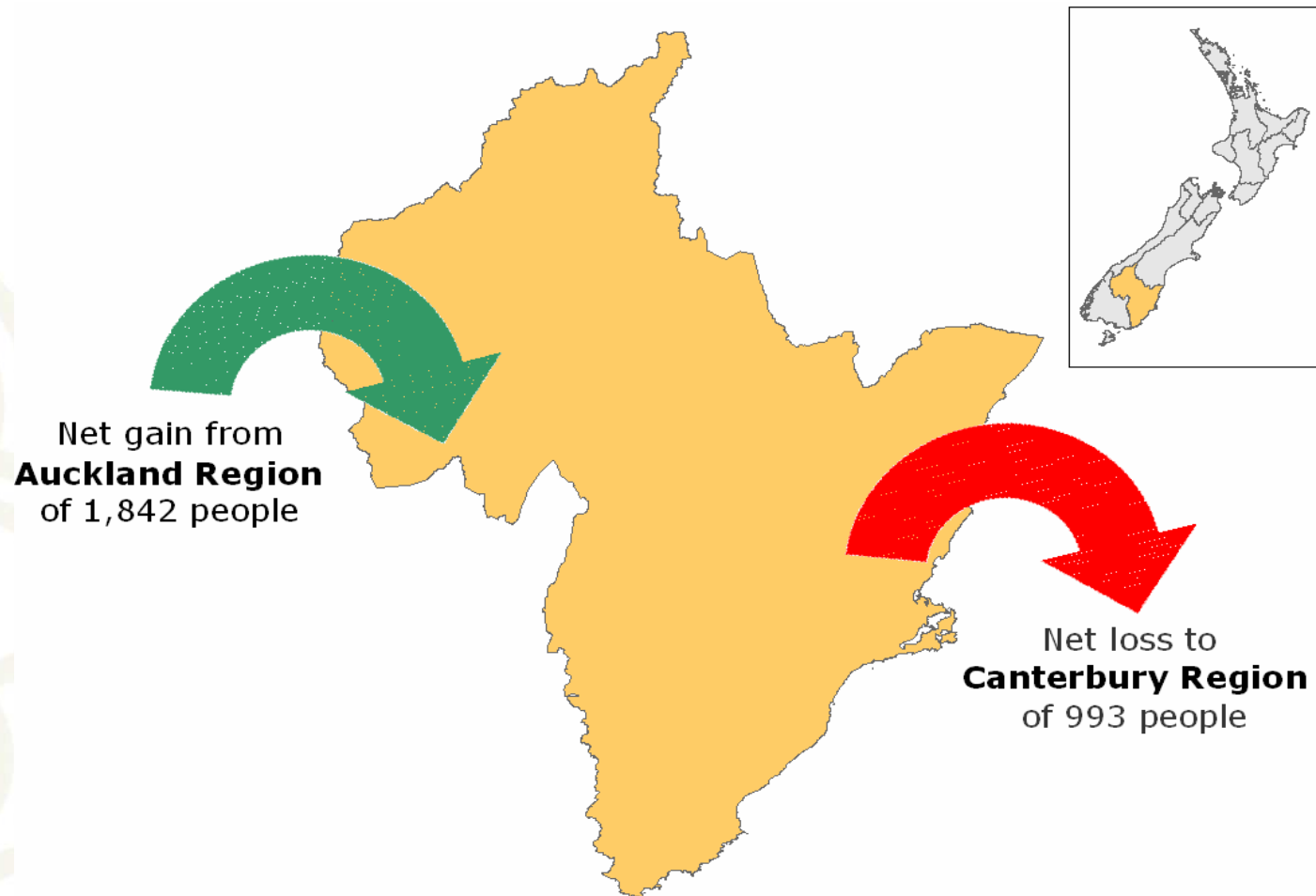


What we look like locally



Net Migration for Otago Region

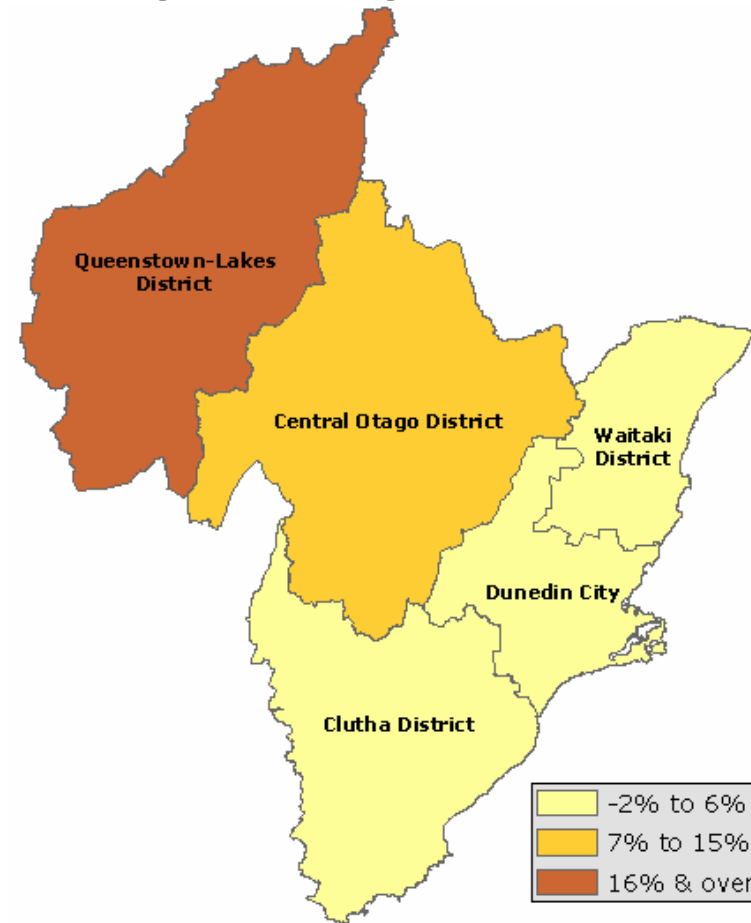


Usually Resident Population

Percentage change from 2001

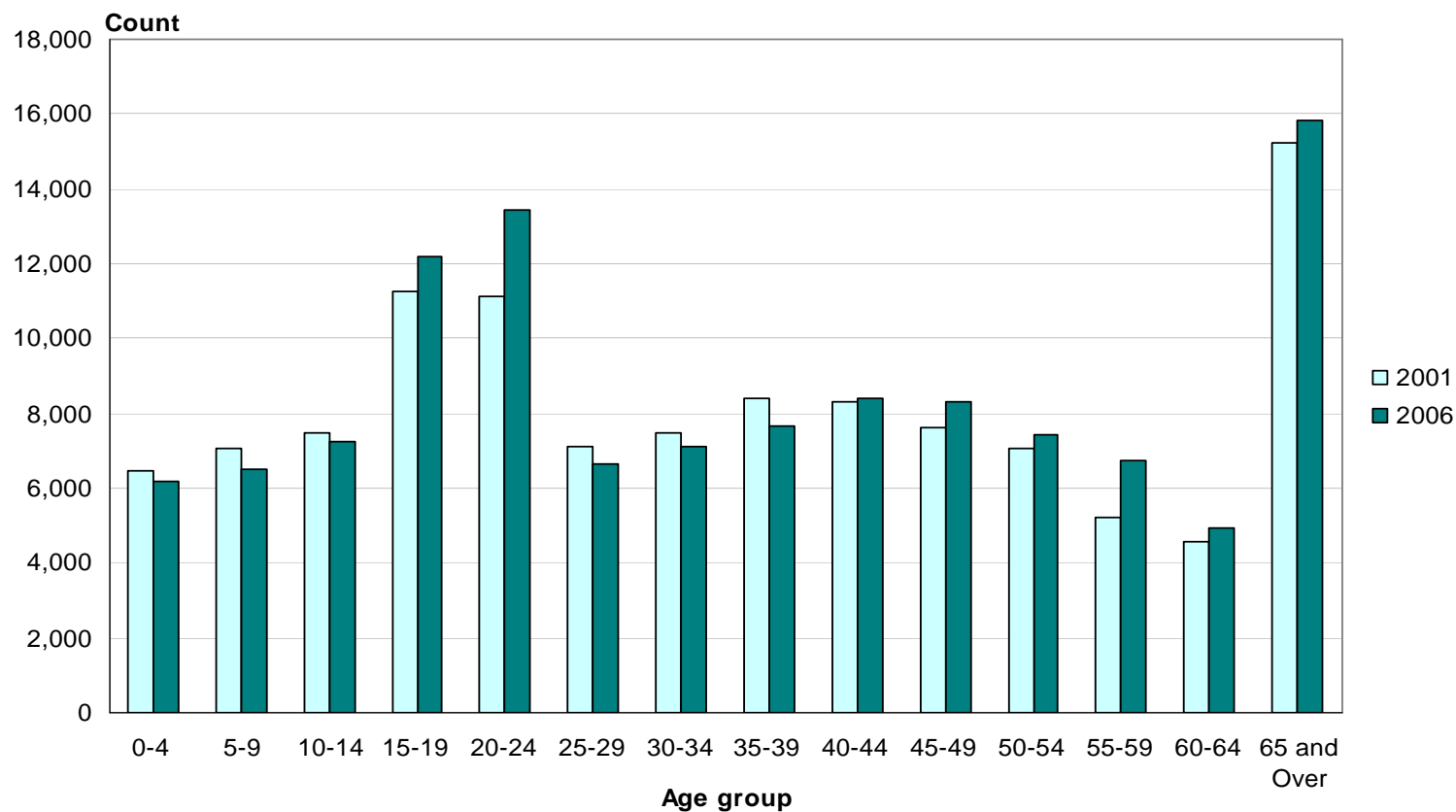
o Otago Region
193,800

o Dunedin City
118,683



Age (5 years)

Dunedin City, 2001 and 2006 Censuses



Median age for Dunedin City 34 years

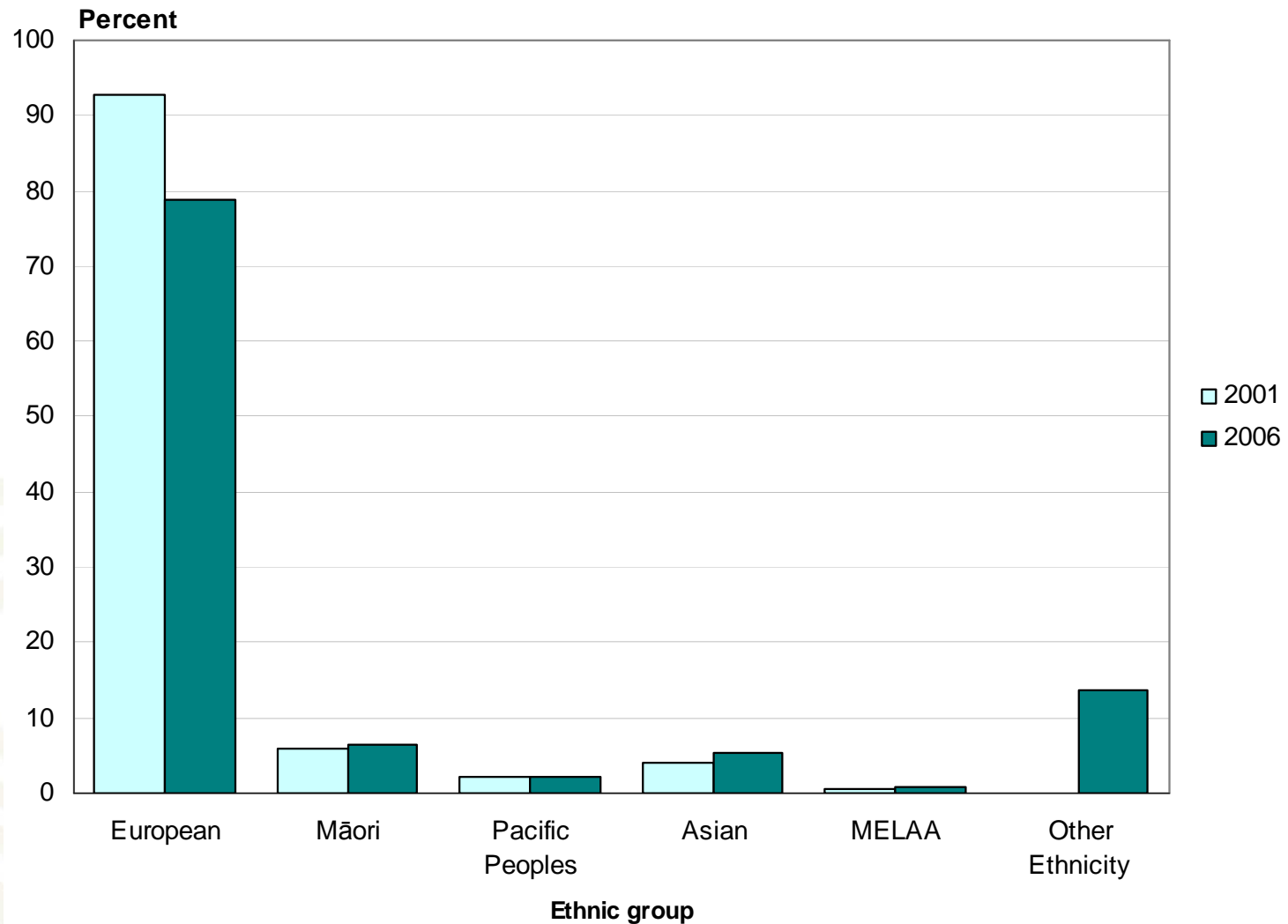
Who needs a holiday programme?

- Number of children under 15 years
 - o Otago Region 34,149
 - o Dunedin City 19,974

	0 - 4 Years	5 - 9 Years	10 - 14 Years	Total
Caversham	315	261	270	843
Brockville	258	258	273	786
St Clair	246	222	312	774
Vauxhall	186	237	288	711
Mosgiel East	192	258	261	711
Taieri	192	231	246	672
Wakari	195	207	219	621

Ethnic Group

Dunedin City, 2001 and 2006 Censuses



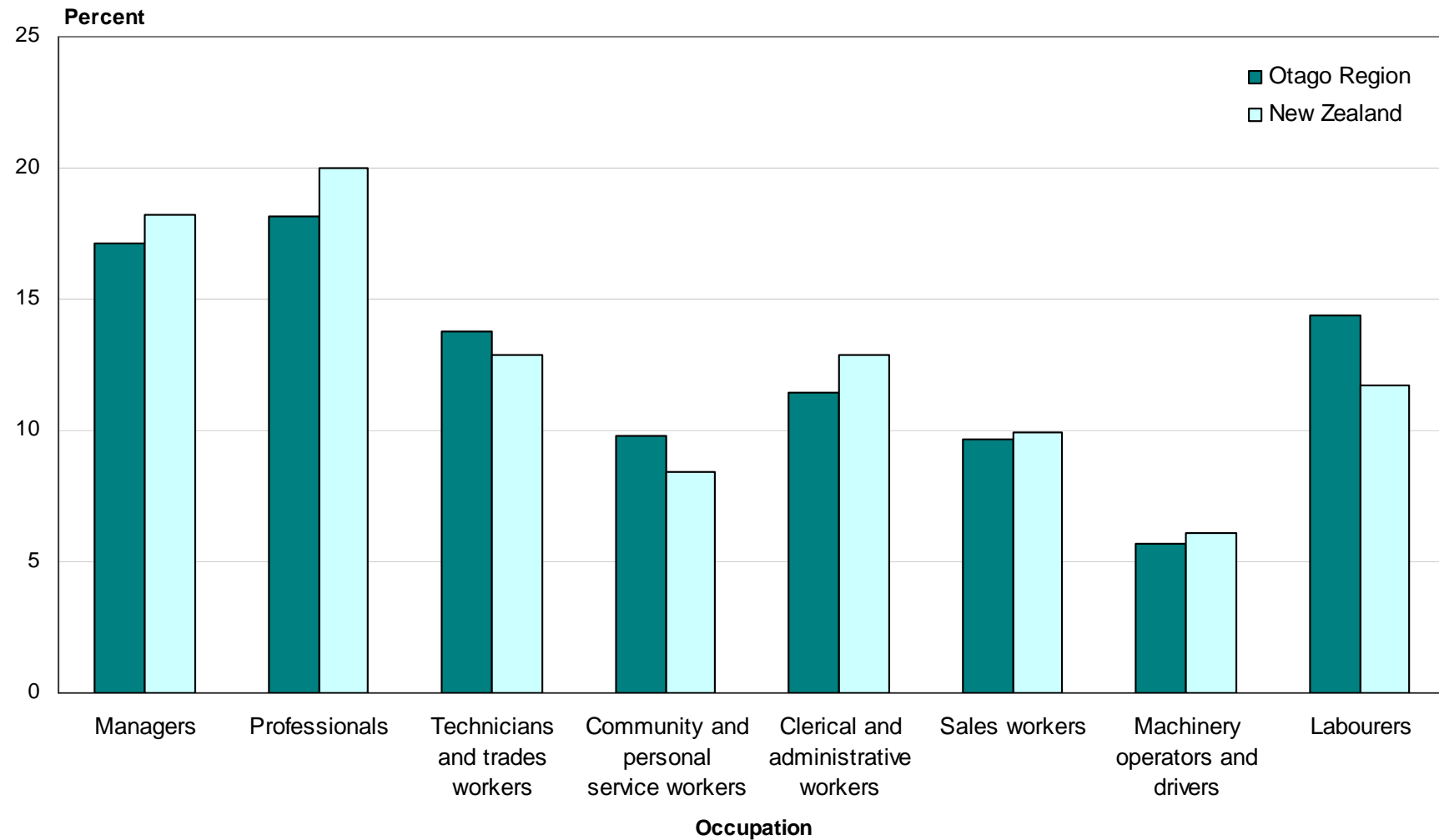
Religious Affiliation (percent)

Otago Region and New Zealand, 2006 Census

	Region	NZ
Christian (not including Māori Christian)	57.7	58.0
No Religion	41.4	37.1
Māori Christian	0.4	1.9
Hindu	0.5	1.8
Buddhist	1.0	1.5
Islam/Muslim	0.4	1.0
Other Religions	0.3	0.7
Spiritualism and New Age Religions	0.6	0.6
Judaism/Jewish	0.1	0.2

Occupation (ANZSCO)

Otago Region and New Zealand, 2006 Census



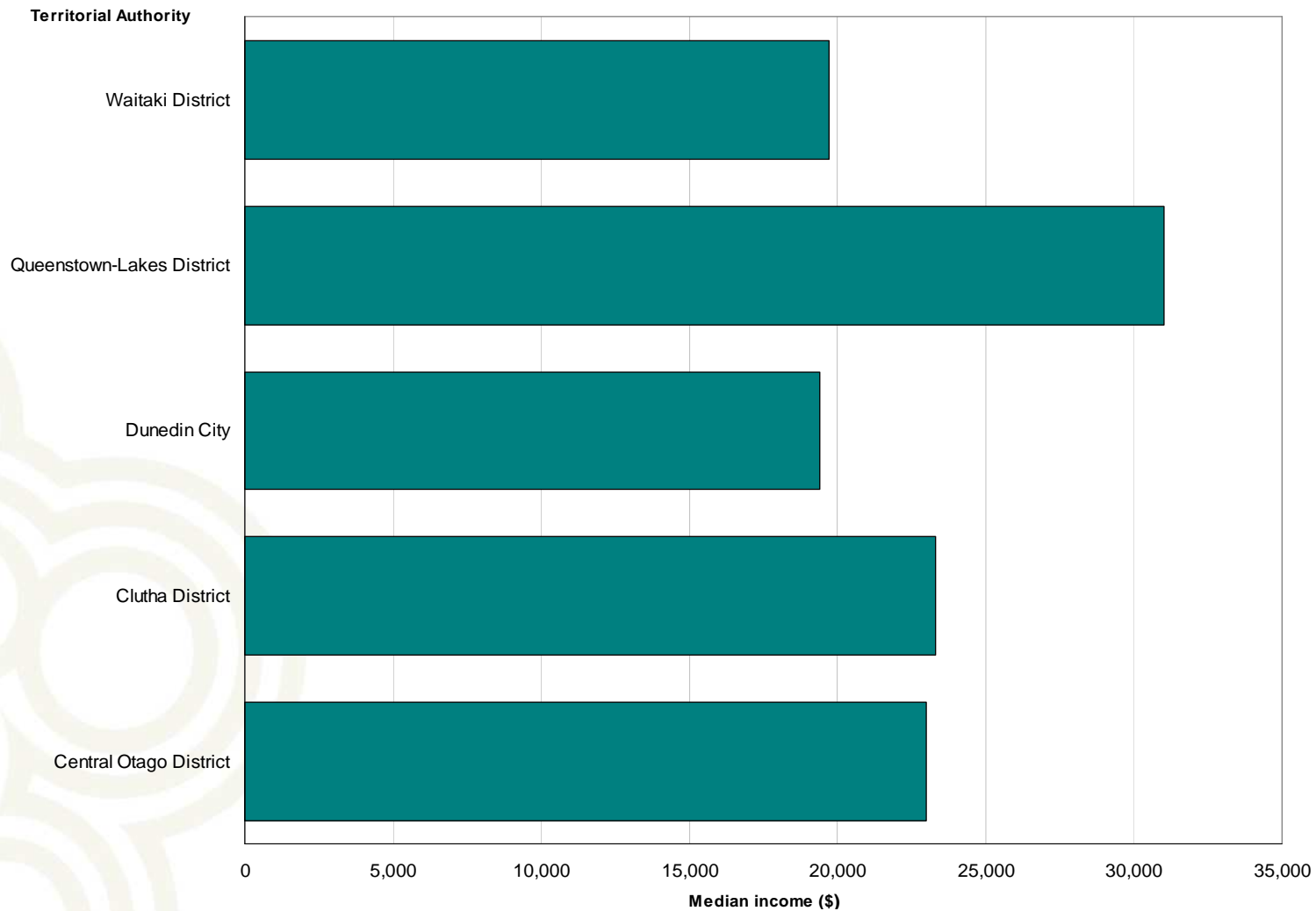
Unpaid Activities

Otago Region and New Zealand, 2006 Census

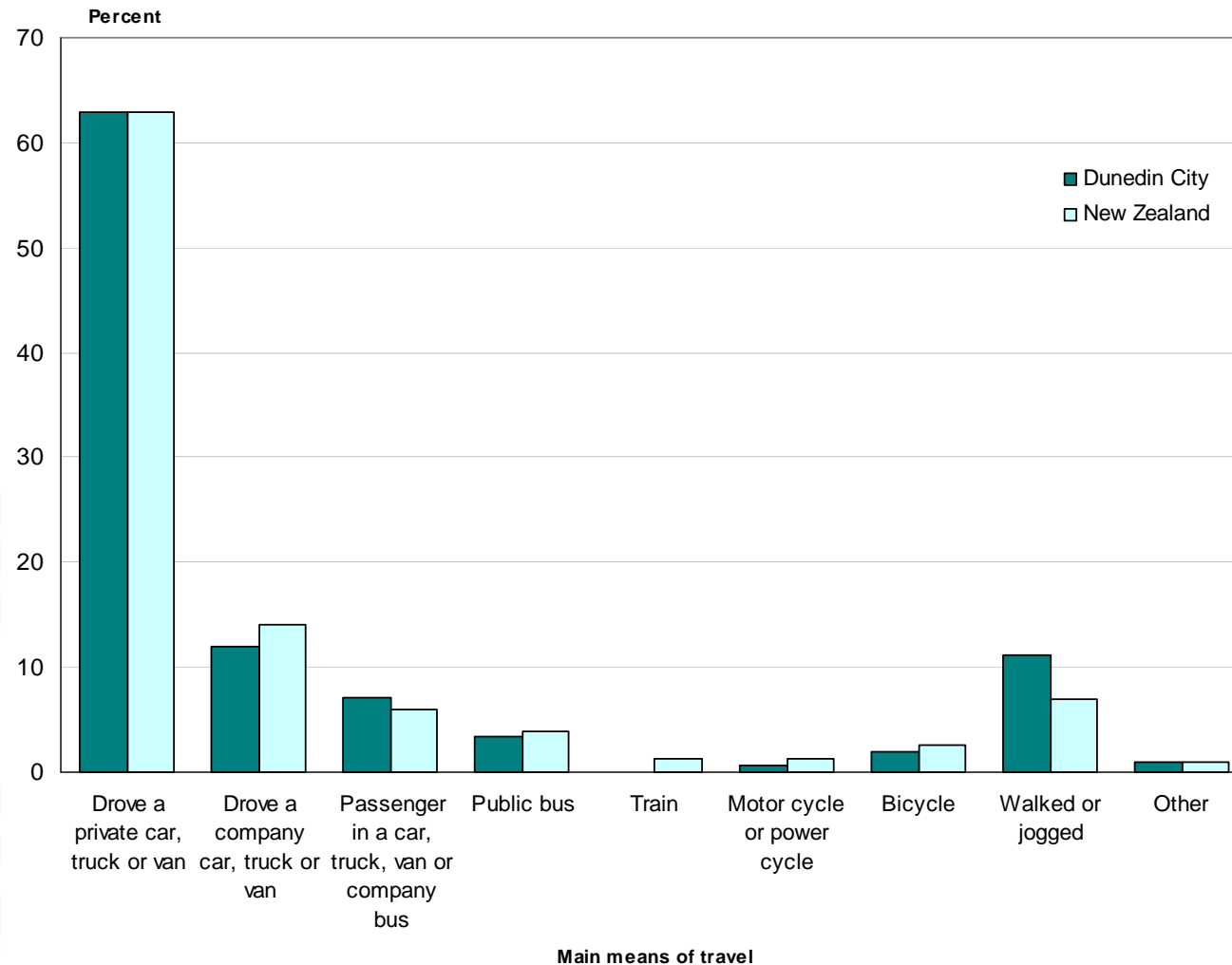
	Region	NZ
Helping someone who is ill or has a disability who does not live in own household	9.2	9.1
Household work for own household	86.9	86.1
Looking after a child who does not live in own household	15.7	16.2
Looking after a child who is a member of own household	27.4	31.6
Looking after a member of own household who is ill or has a disability	7.1	7.8
No activities	10.7	11.3
Other helping or voluntary work	17.0	15.4

Median Personal Income

Territorial Authorities in Otago Region, 2006 Census



Main Means of Travel to Work Dunedin City and New Zealand, 2006 Census



Private occupied dwellings

New Zealand 1,471,746

- 8.2 percent increase from 2001

Otago Region 75,231

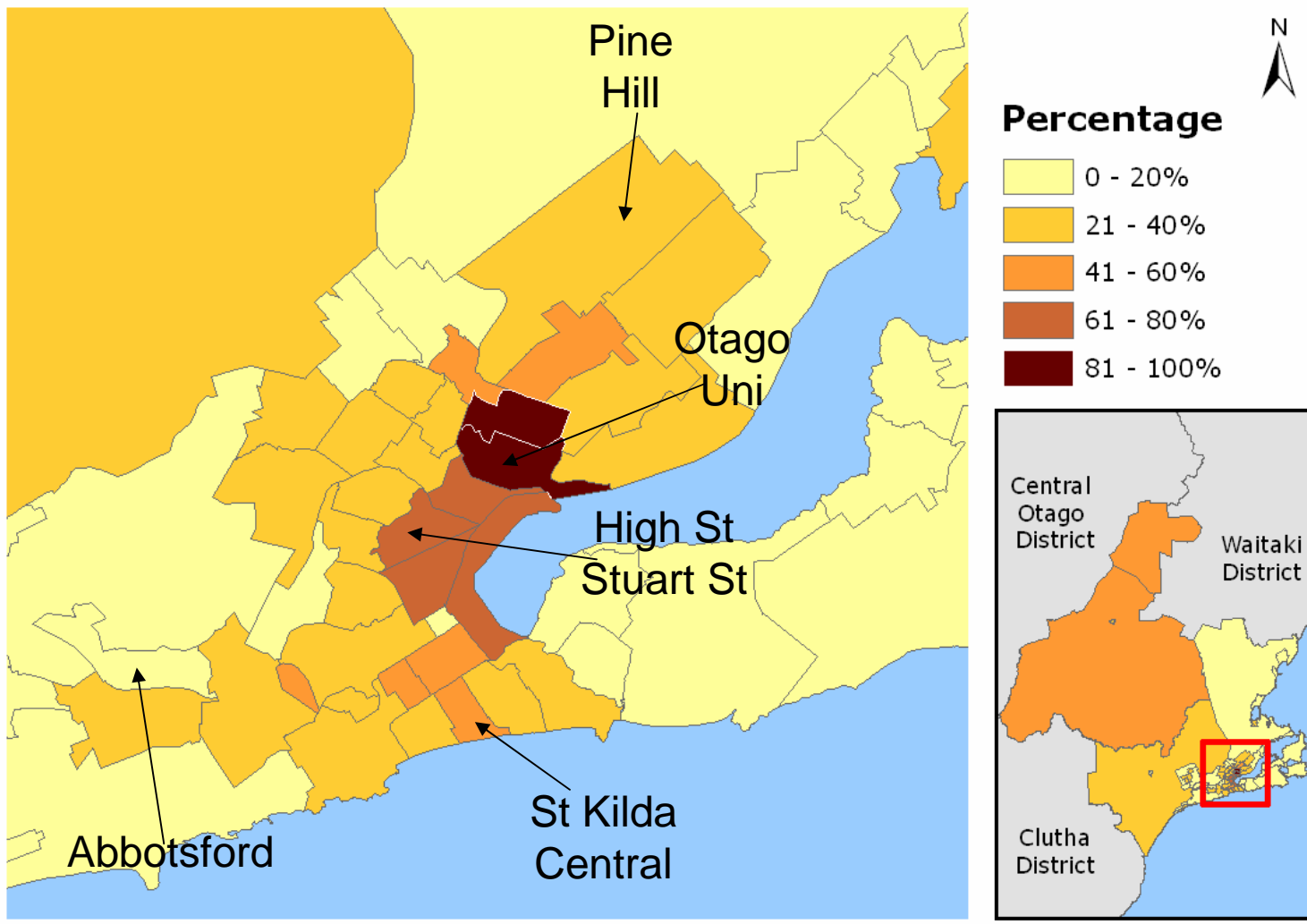
- 6.5 percent increase from 2001

Dunedin City 44,808

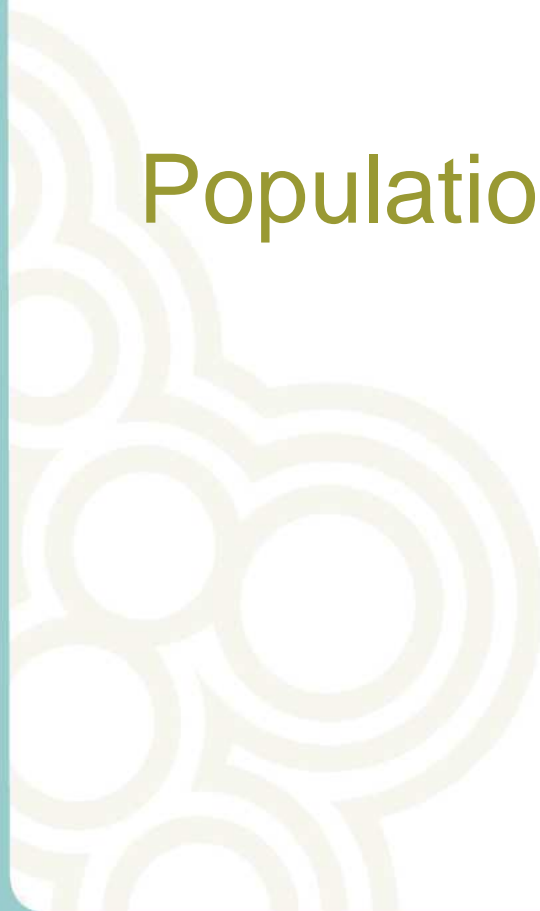
- 2.7 percent increase from 2001

Dwellings Not Owned by Usual Resident(s)

Dunedin City (Area Unit), 2006 Census



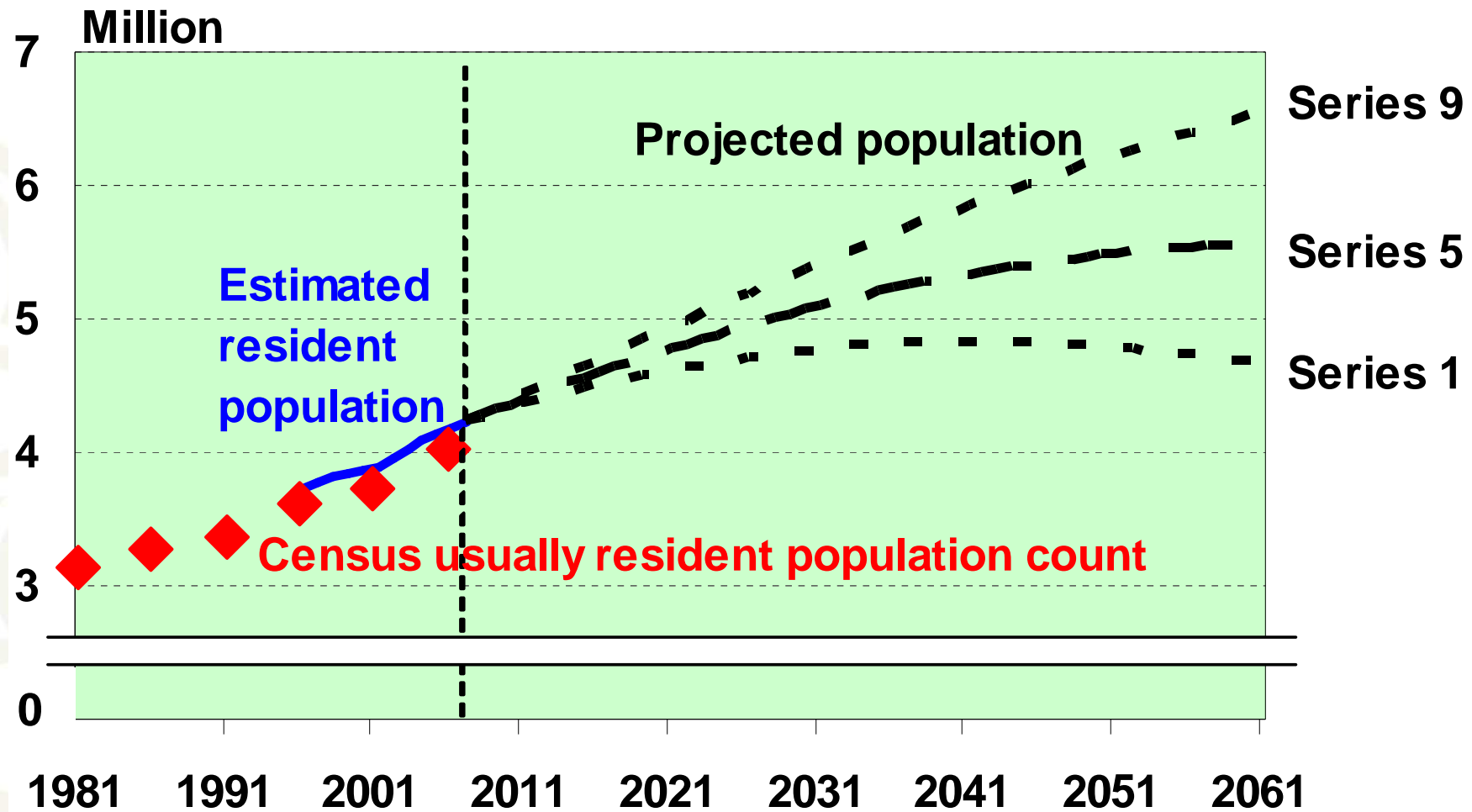
Population estimates and projections



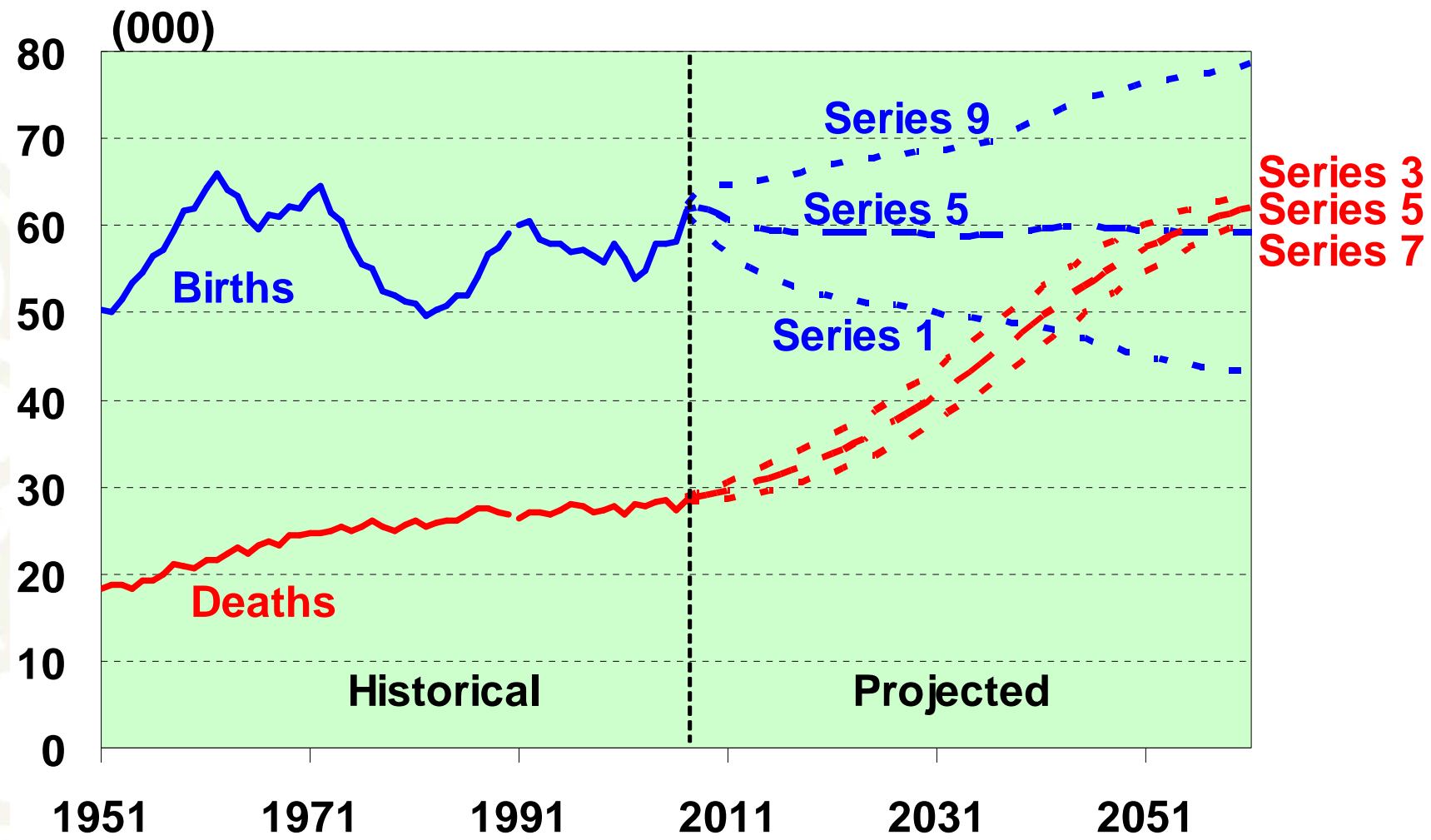
Estimated resident population

- The best measure of who lives in an area
- A census base (excluding overseas visitors) adjusted for:
 - o Net census undercount
 - o Residents temporarily overseas
 - o Births, deaths and net migration to 30 June 2006
- Limited variables (age, sex, ethnicity)
- Provides base for population projections

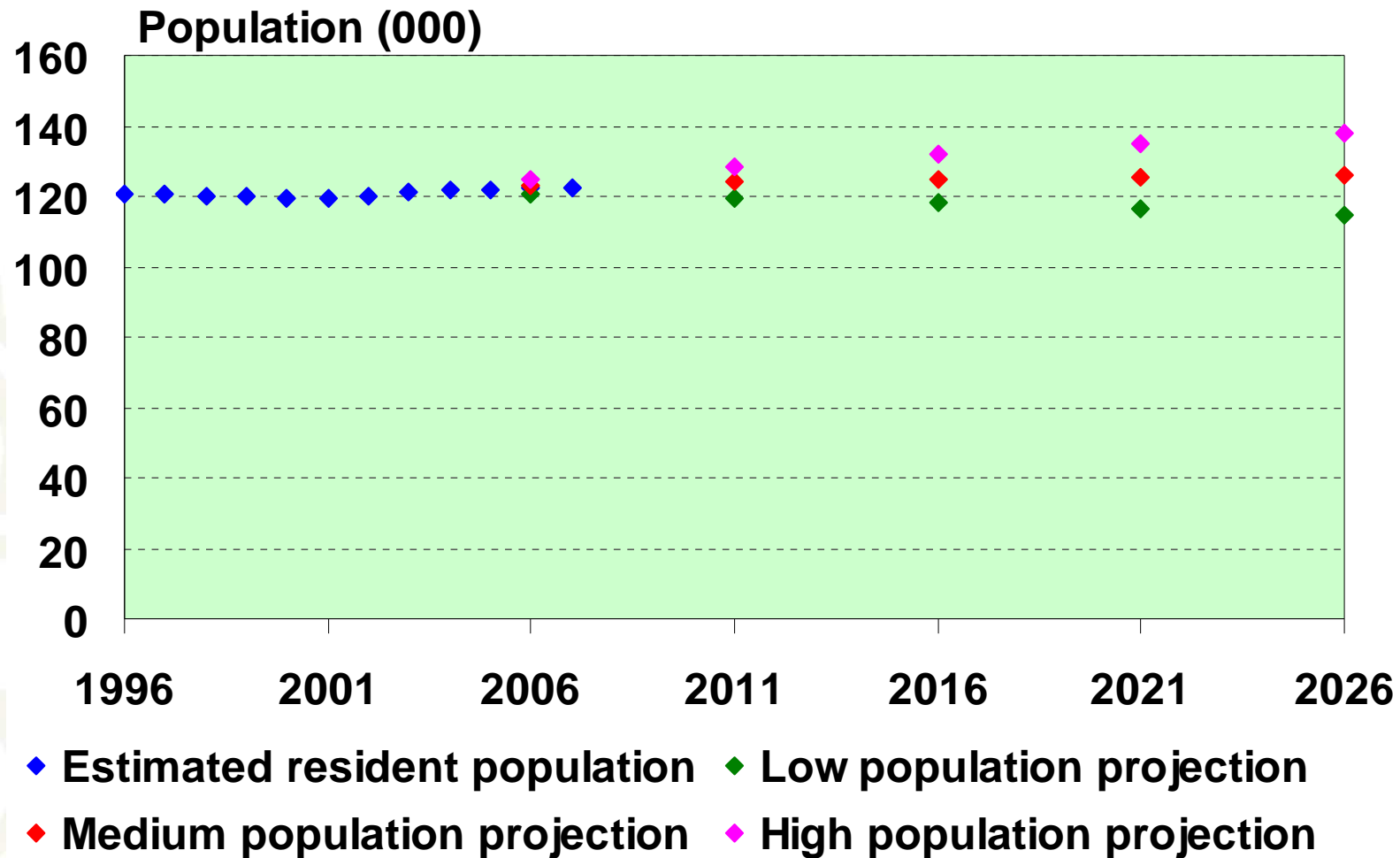
New Zealand population



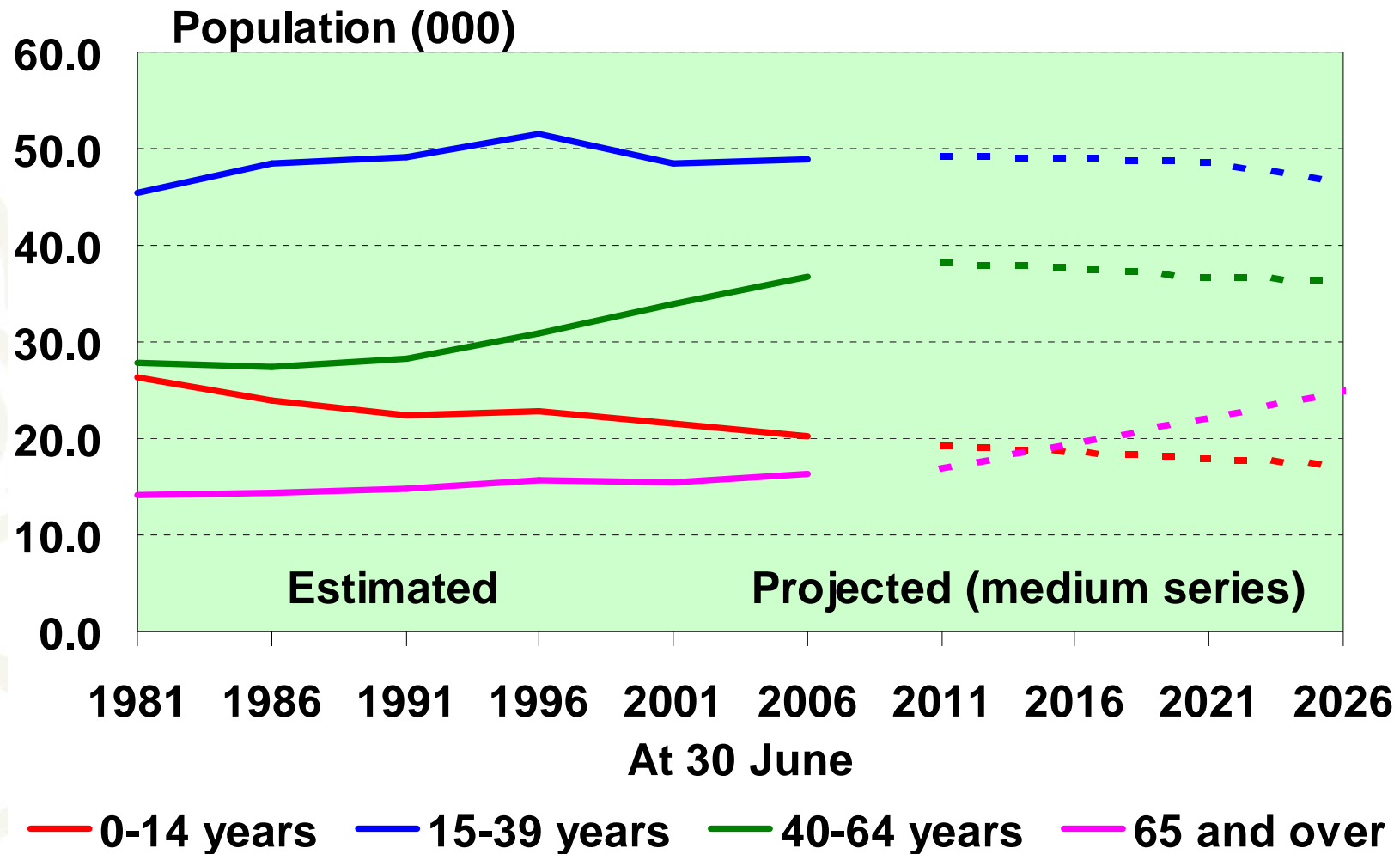
New Zealand shrinking natural increase



Population of Dunedin City



Dunedin City: growth in older ages



Key release dates: 2006-base population estimates

21 August 2007: first 2006-base population estimates

June 2006 data on Table Builder

- o National and subnational estimates June 2006
- o Area unit estimates June 2006 (NEW)
- o National estimates June 2007 Quarter

23 October 2007

- o Subnational estimates June 2007

December 2007

- o Area unit estimates June 2007 (NEW)

Population Projections – release dates

- National population projections: 24 October 2007
- Subnational population projections: 3 December 2007
- National ethnic projections: 2 April 2008
- National labour force projections: 6 May 2008
- Area unit population projections: mid 2008
- Family and household projections: 2008/09