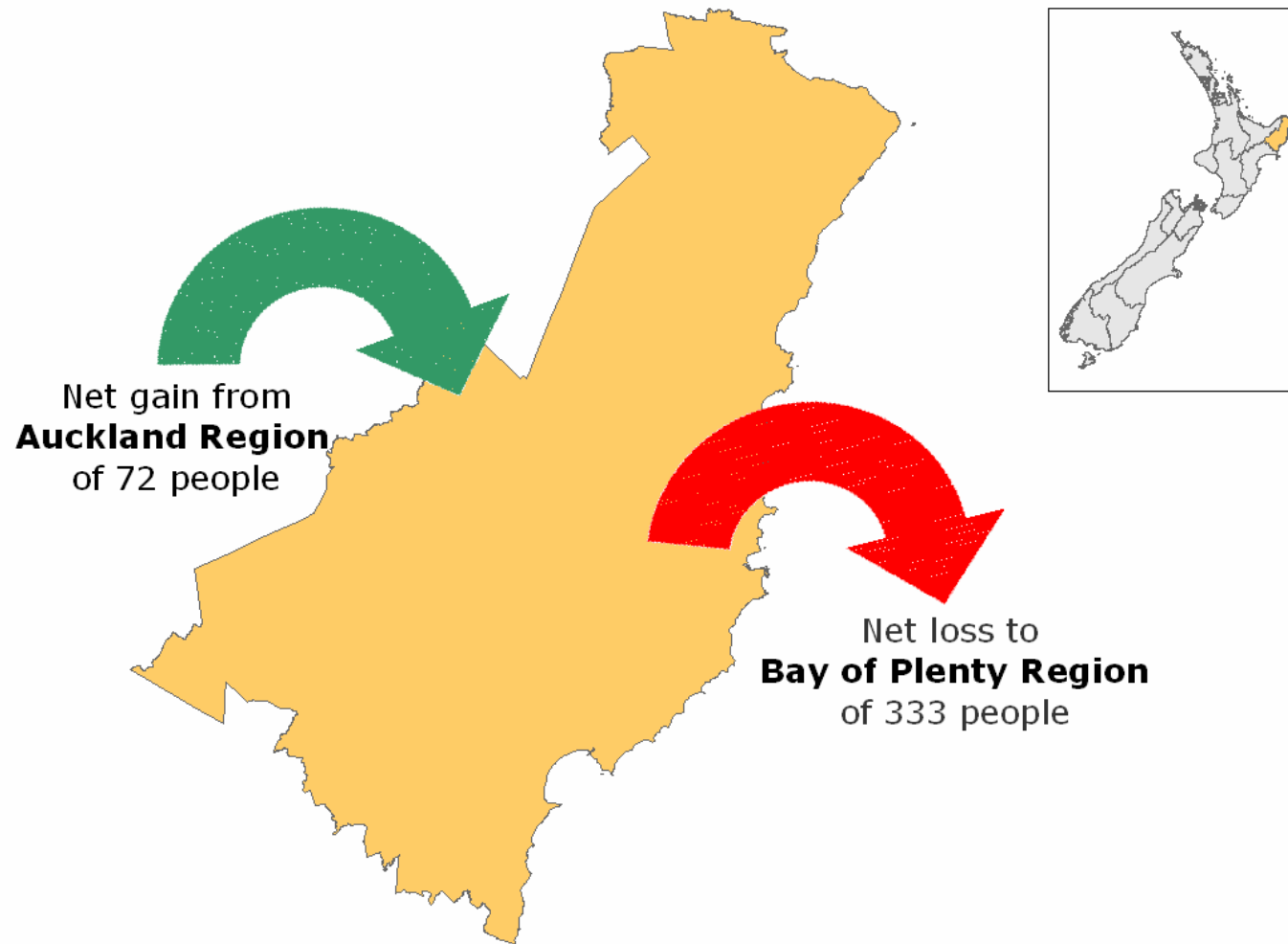


# What we look like locally



# Net Migration for Gisborne Region

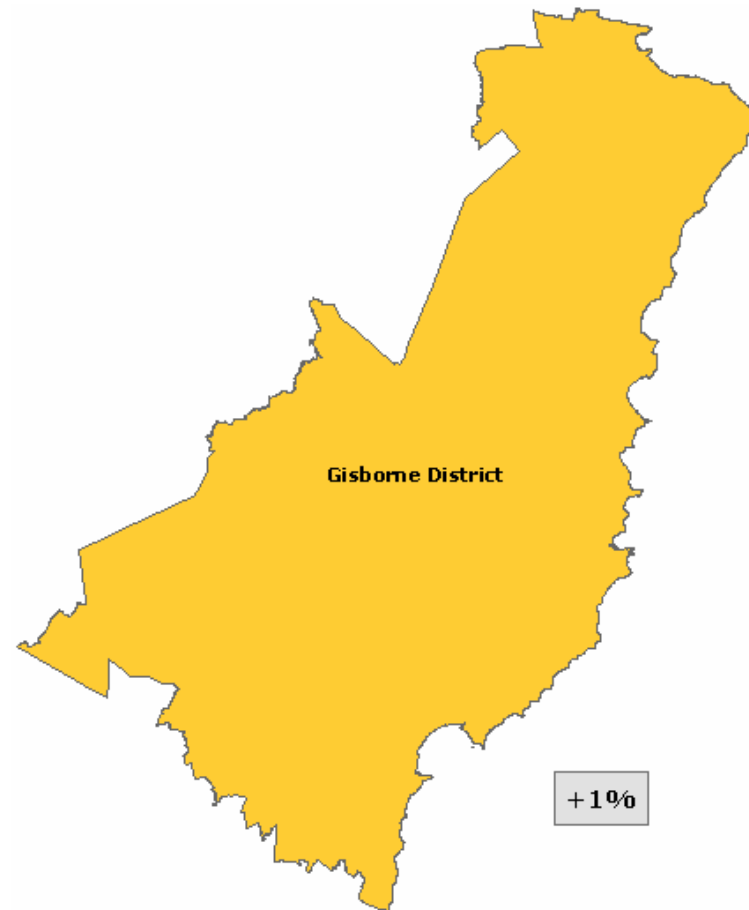


# Usually Resident Population

Percentage change from 2001

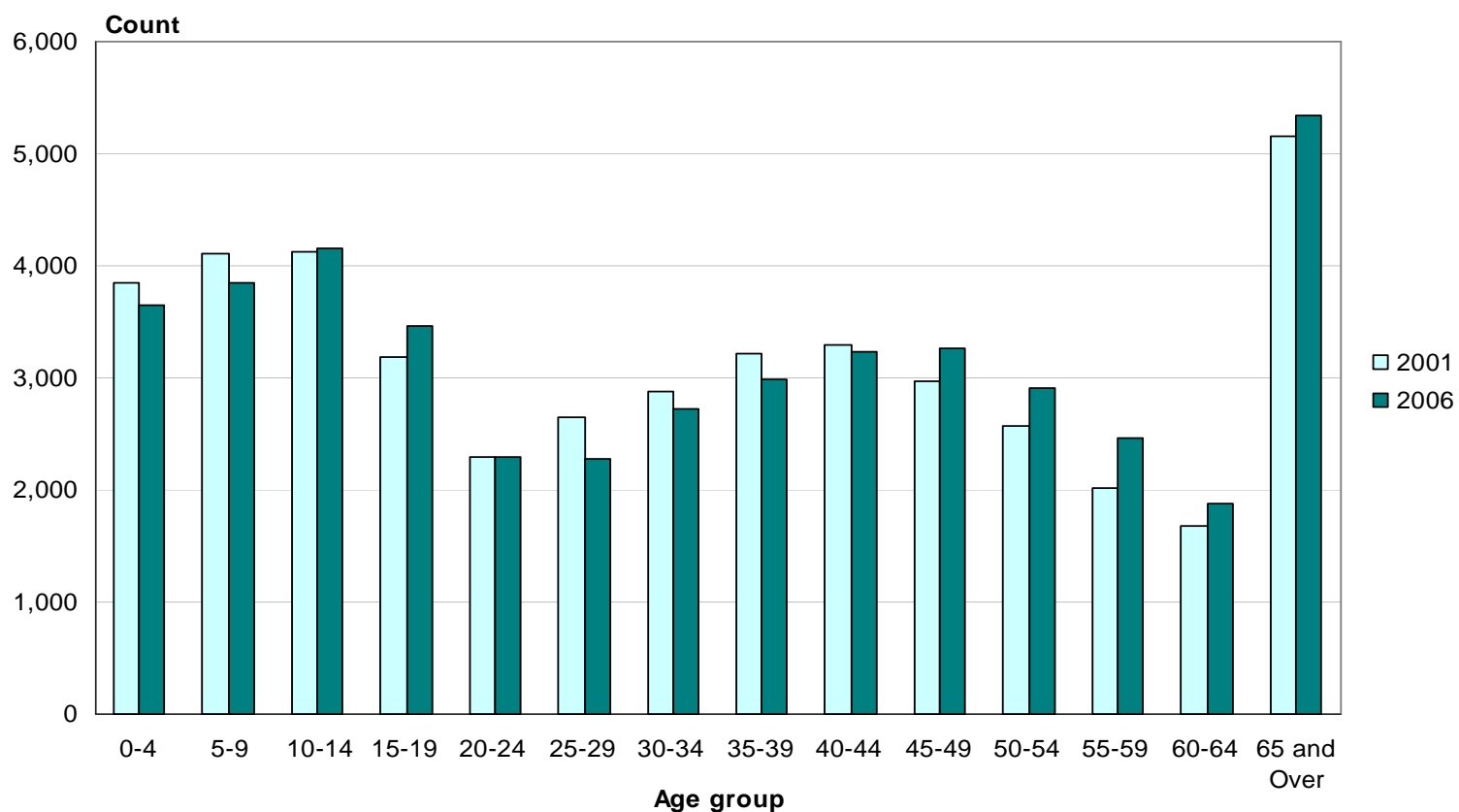
- o Gisborne Region  
44,499

- o Gisborne District  
44,460



# Age (5 years)

## Gisborne District, 2001 and 2006 Censuses



Median age for Gisborne District 33.8 years

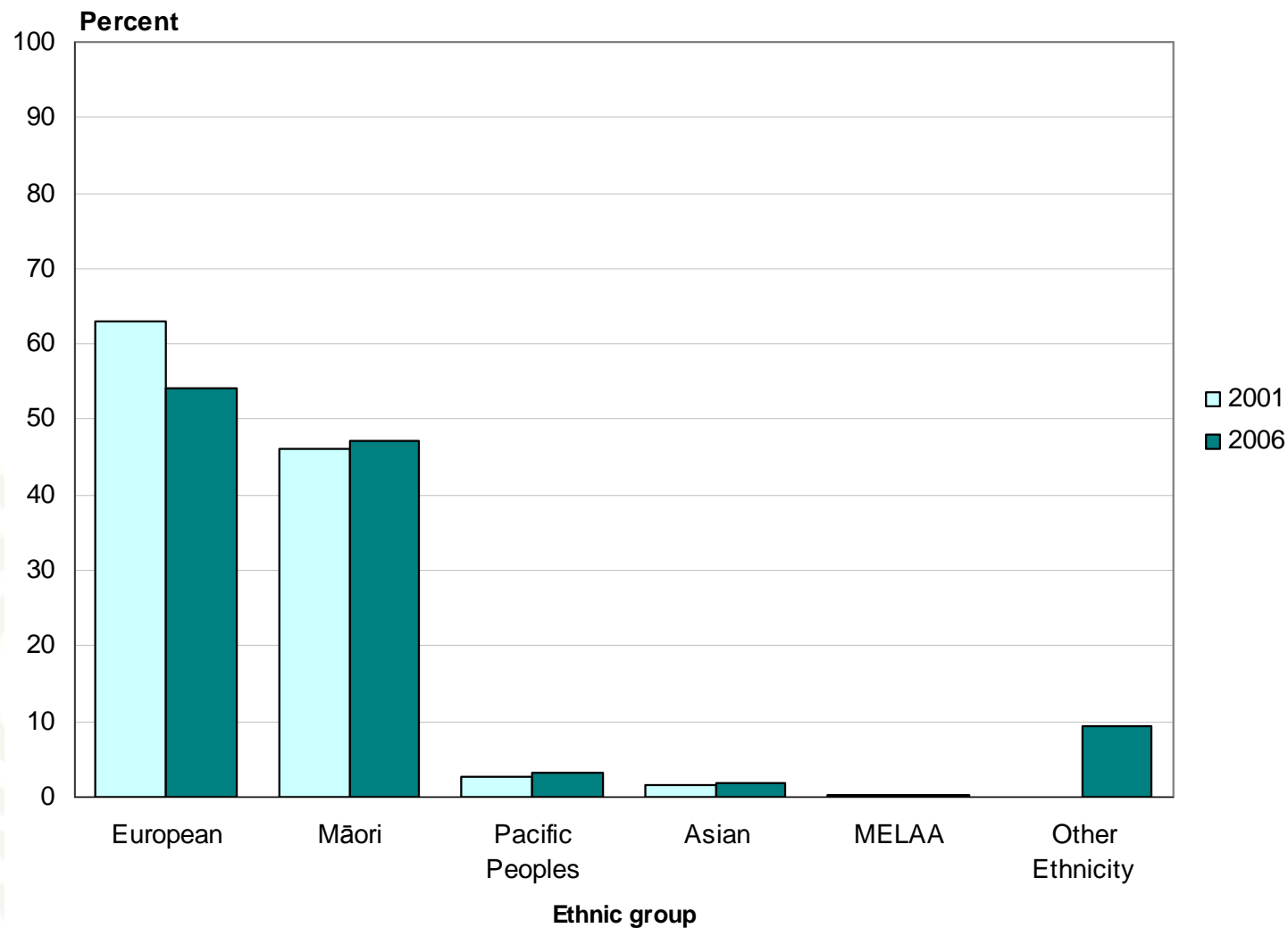
## Who needs a holiday programme?

- Number of children under 15 years
  - o Gisborne Region            11,649

	0 - 4 Years	5 - 9 Years	10 - 14 Years	Total
Mangapapa	360	366	393	1,119
Te Hapara	297	309	366	975
Outer Kaiti	300	306	300	906
Whataupoko	246	297	339	882
Kaiti South	276	282	297	852
East Cape	243	276	258	780
Gisborne Airport	228	258	285	771

# Ethnic Group

## Gisborne District, 2001 and 2006 Censuses



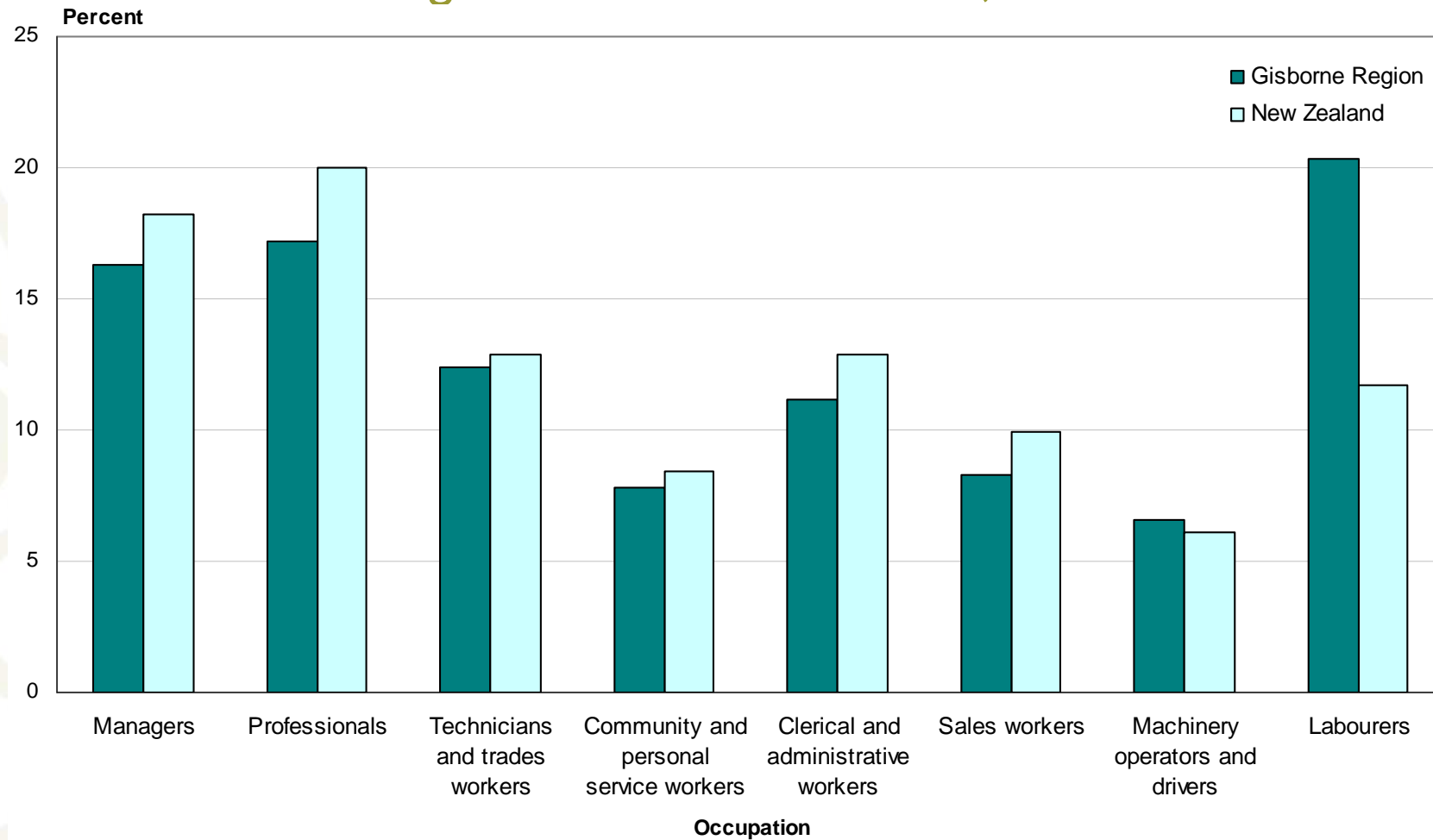
# Religious Affiliation (percent)

Gisborne Region and New Zealand, 2006 Census

	Region	NZ
Christian (not including Māori Christian)	66.8	58.0
No Religion	31.9	37.1
Māori Christian	13.1	1.9
Hindu	0.3	1.8
Buddhist	0.4	1.5
Islam/Muslim	0.2	1.0
Other Religions	0.8	0.7
Spiritualism and New Age Religions	0.5	0.6
Judaism/Jewish	0.1	0.2

# Occupation (ANZSCO)

## Gisborne Region and New Zealand, 2006 Census



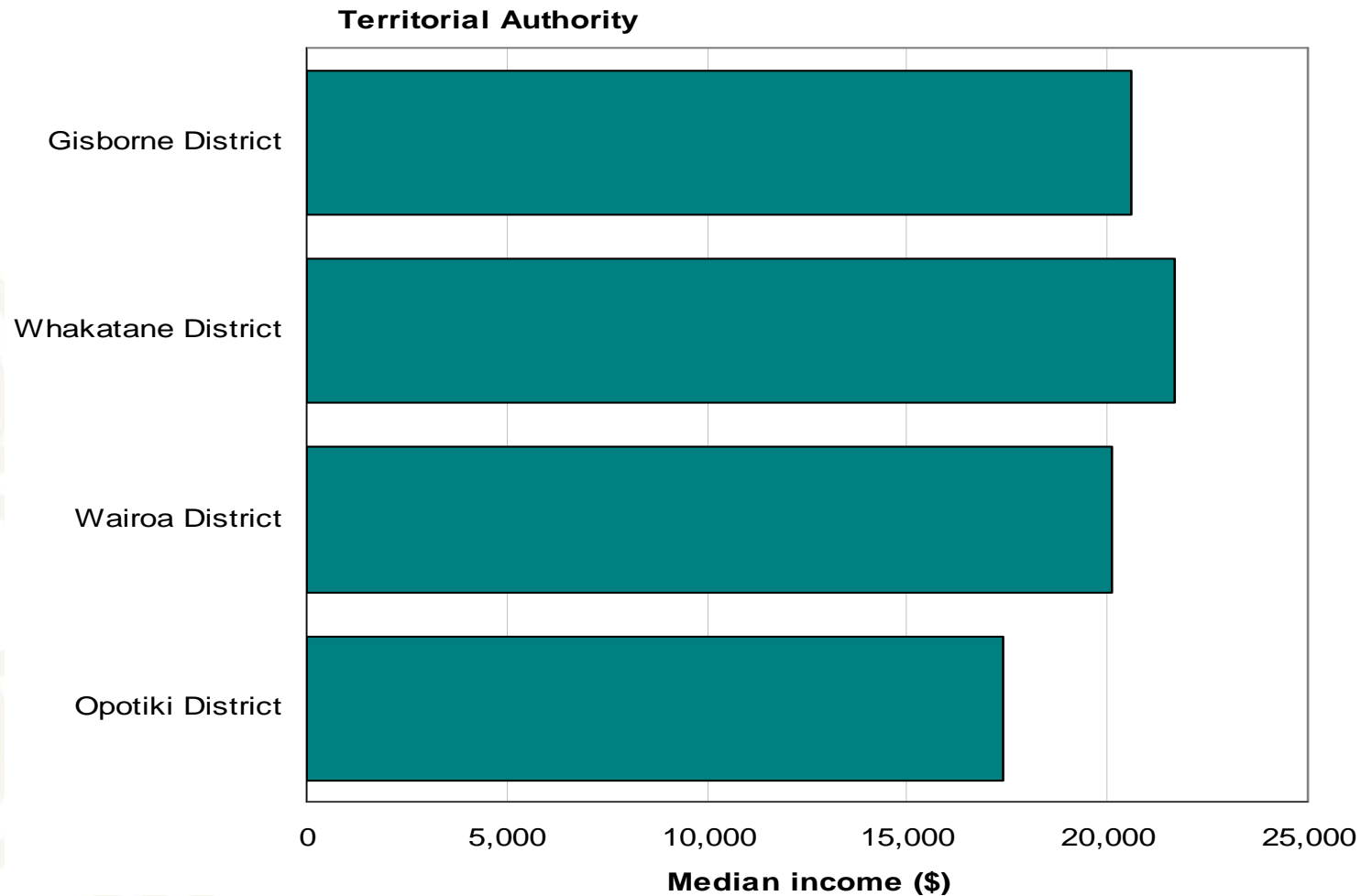
# Unpaid Activities

## Gisborne Region and New Zealand, 2006 Census

	Region	NZ
Helping someone who is ill or has a disability who does not live in own household	11.2	9.1
Household work for own household	84.7	86.1
Looking after a child who does not live in own household	20.6	16.2
Looking after a child who is a member of own household	37.1	31.6
Looking after a member of own household who is ill or has a disability	10.0	7.8
No activities	12.0	11.3
Other helping or voluntary work	19.3	15.4

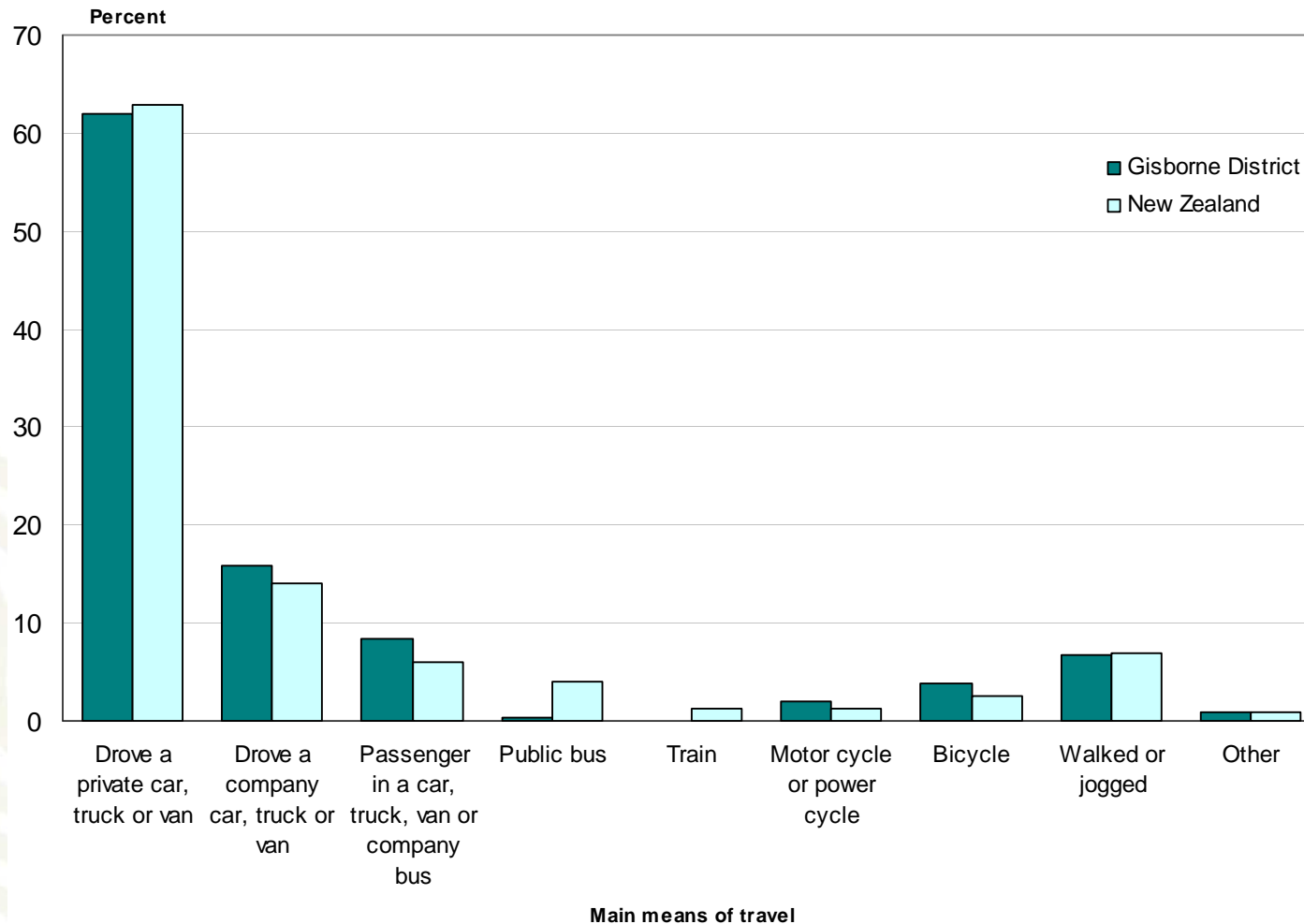
# Median Personal Income

## Selected Territorial Authorities, 2006 Census



# Main Means of Travel to Work

## Gisborne District and New Zealand, 2006 Census



# Private occupied dwellings

**New Zealand**

**1,471,746**

- 8.2 percent increase from 2001

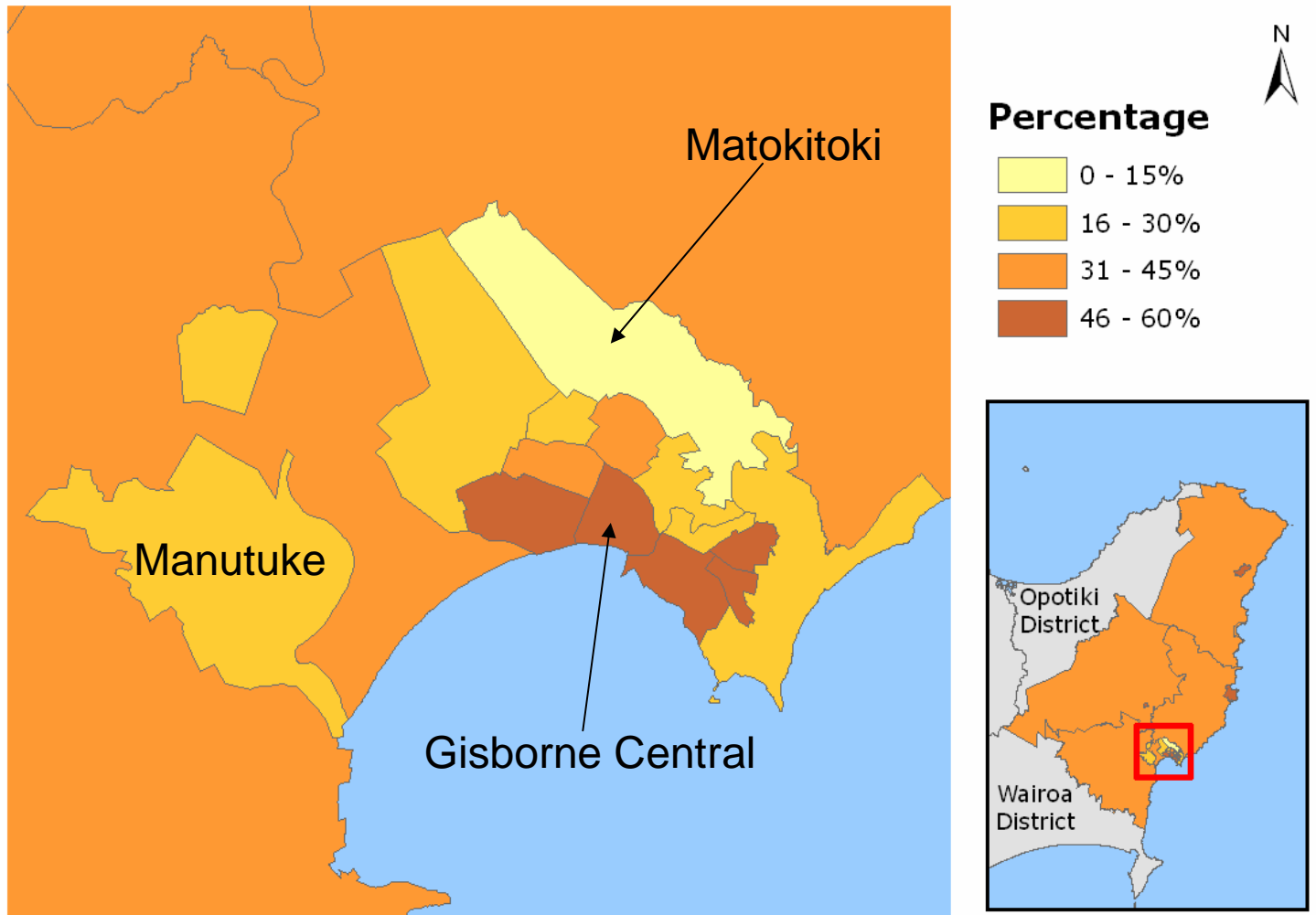
**Gisborne District / Region**

**15,663**

- 1.7 percent increase from 2001

# Dwellings Not Owned by Usual Resident(s)

## Gisborne District (Area Unit), 2006 Census



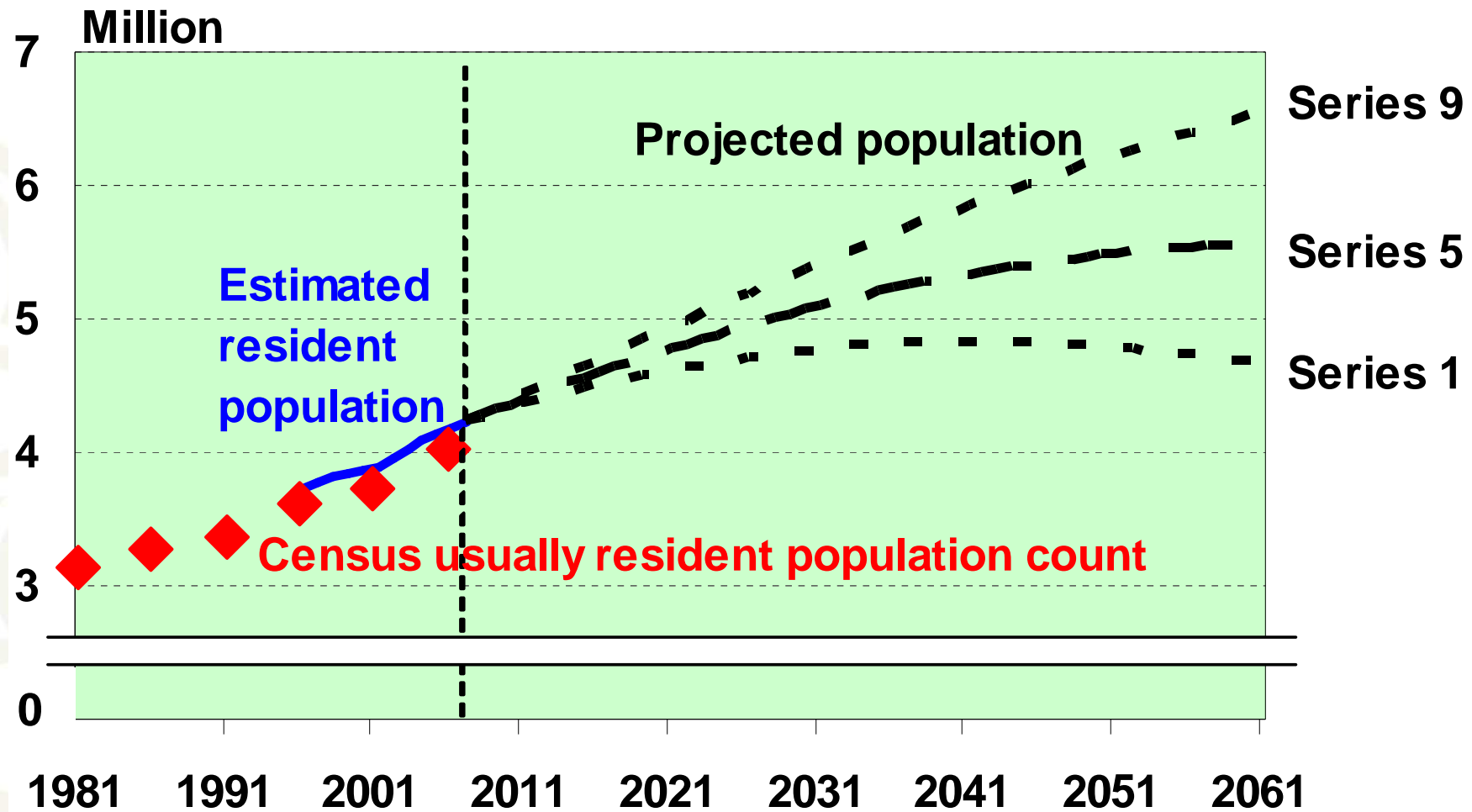
# Population estimates and projections

A decorative graphic in the bottom-left corner consisting of several overlapping, light-colored circles of varying sizes, creating a pattern that resembles a stylized map or a cluster of data points.

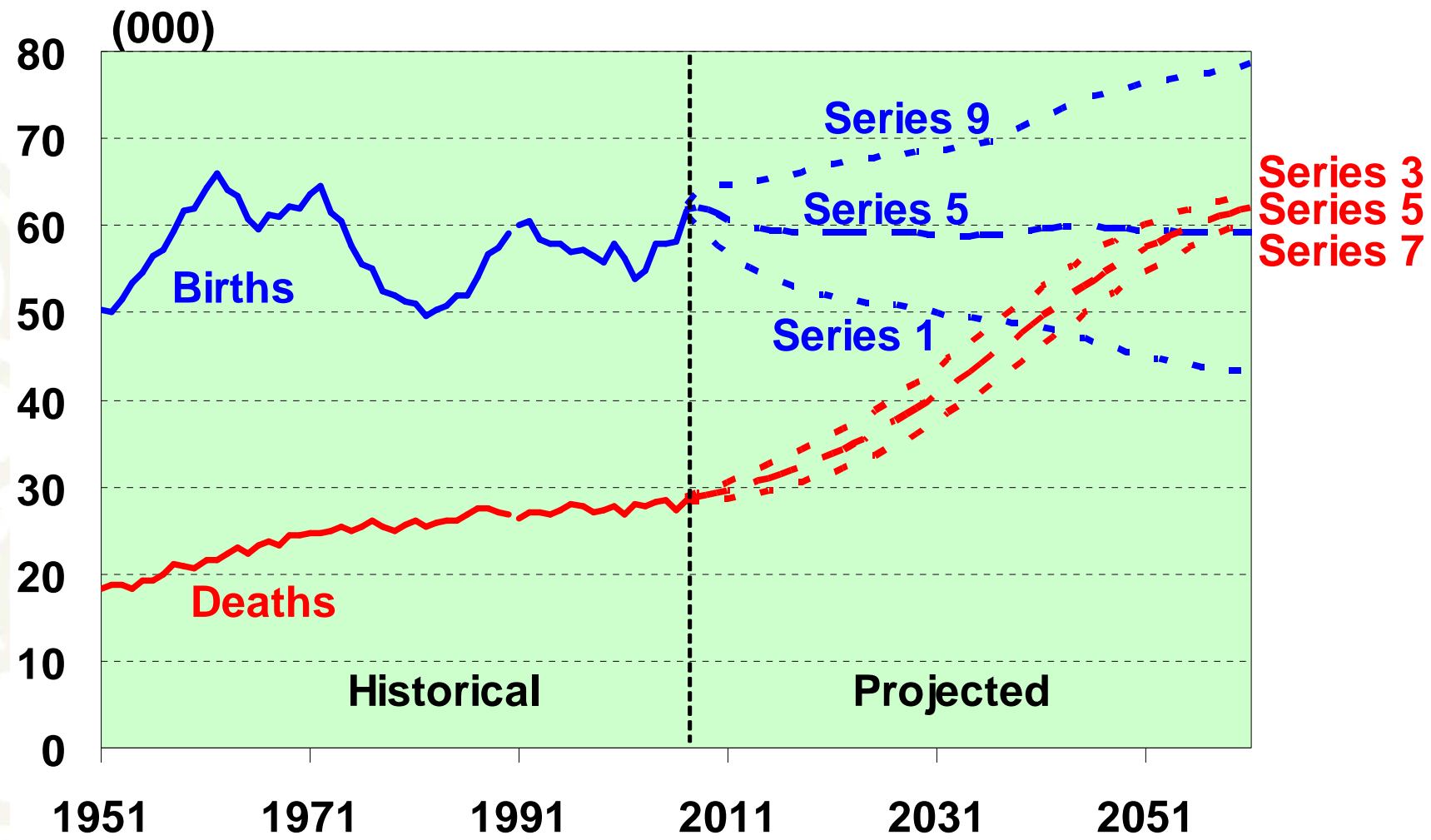
# Estimated resident population

- The best measure of who lives in an area
- A census base (excluding overseas visitors) adjusted for:
  - o Net census undercount
  - o Residents temporarily overseas
  - o Births, deaths and net migration to 30 June 2006
- Limited variables (age, sex, ethnicity)
- Provides base for population projections

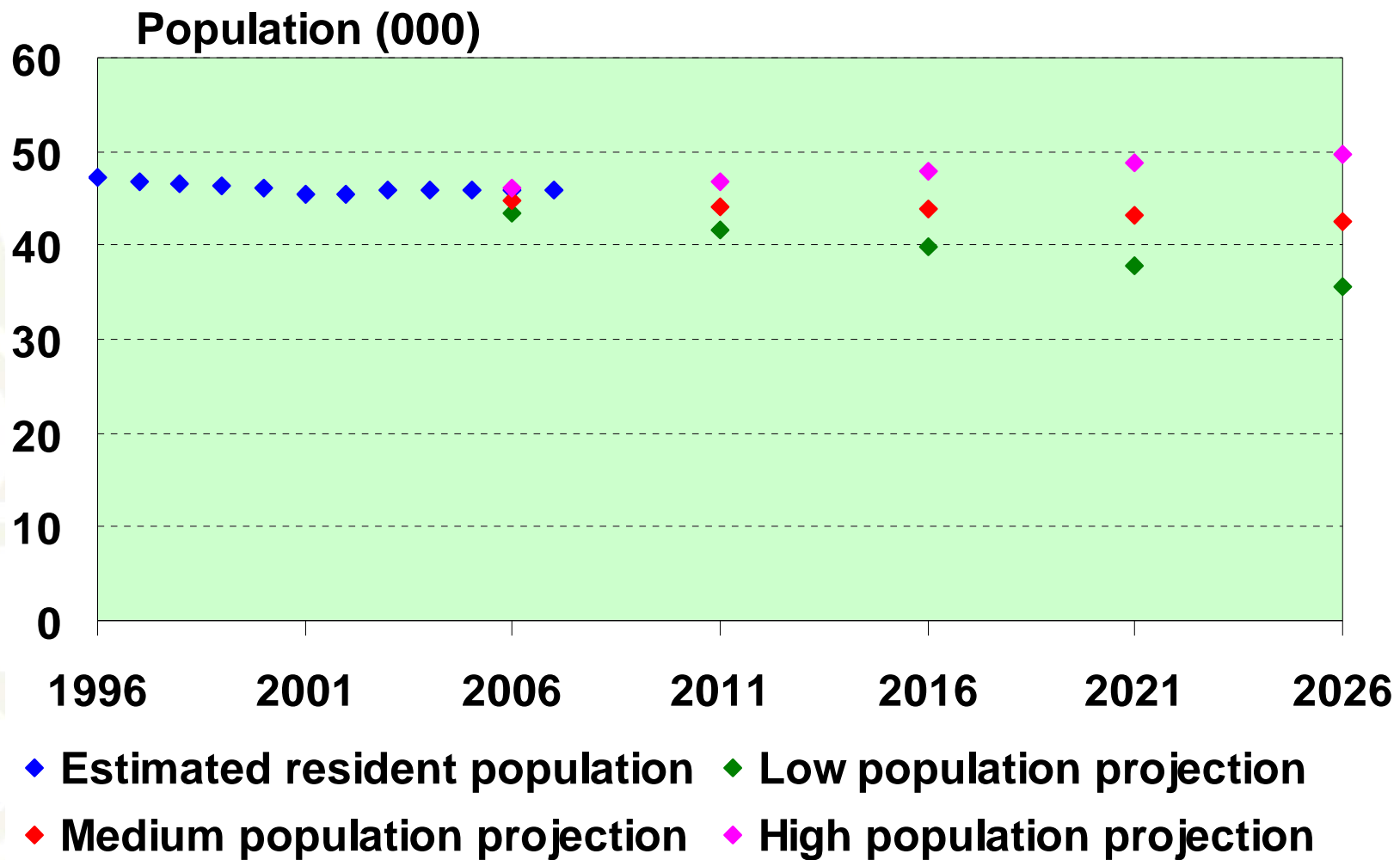
# New Zealand population



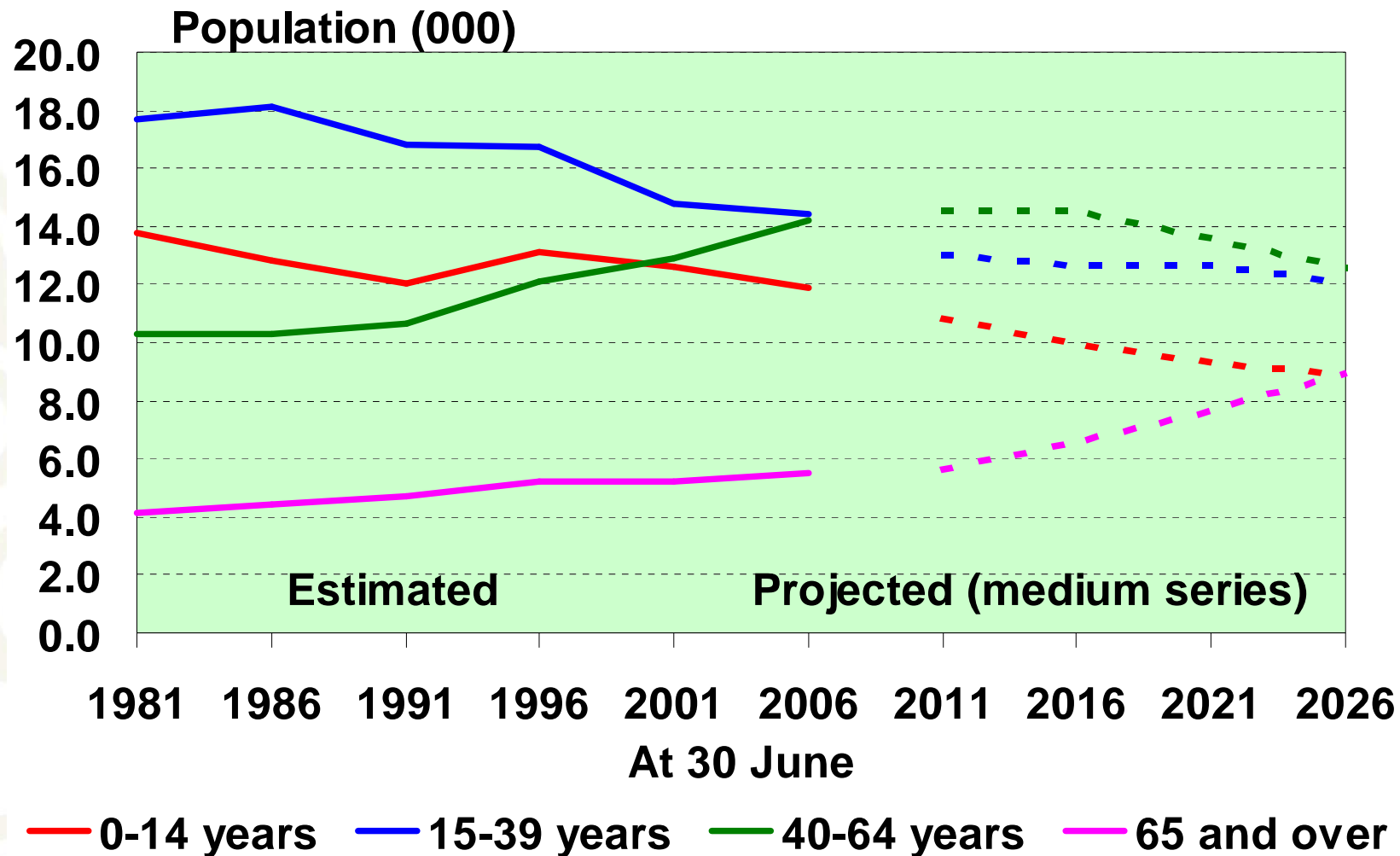
# New Zealand shrinking natural increase



# Population of Gisborne District



## Gisborne District: growth in older ages



## Key release dates: 2006-base population estimates

21 August 2007: first 2006-base population estimates

*June 2006 data on Table Builder*

- o National and subnational estimates June 2006
- o Area unit estimates June 2006 (NEW)
- o National estimates June 2007 Quarter

23 October 2007

- o Subnational estimates June 2007

December 2007

- o Area unit estimates June 2007 (NEW)

## Population Projections – release dates

- National population projections: 24 October 2007
- Subnational population projections: 3 December 2007
- National ethnic projections: 2 April 2008
- National labour force projections: 6 May 2008
- Area unit population projections: mid 2008
- Family and household projections: 2008/09