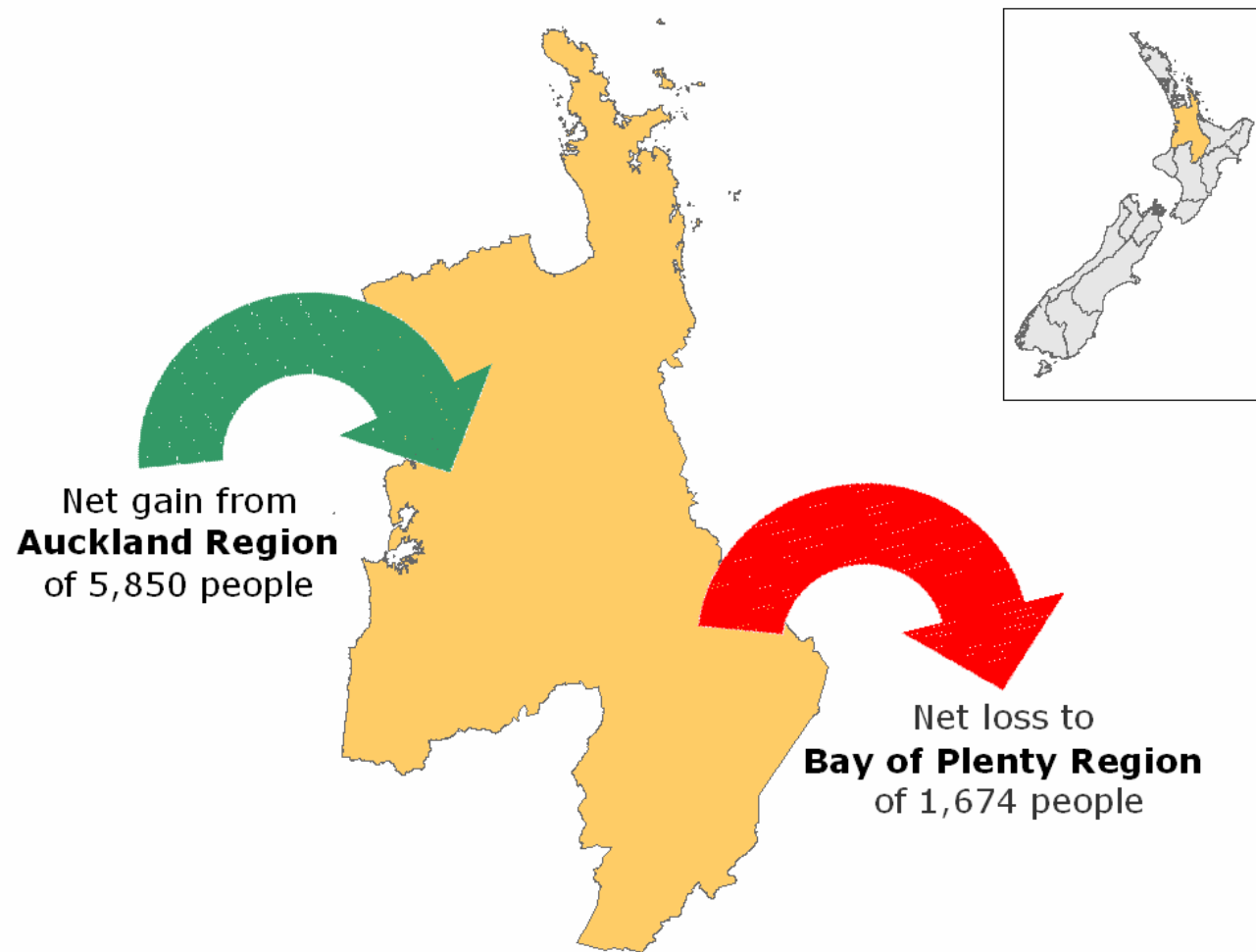


# What we look like locally



# Net Migration for Waikato Region

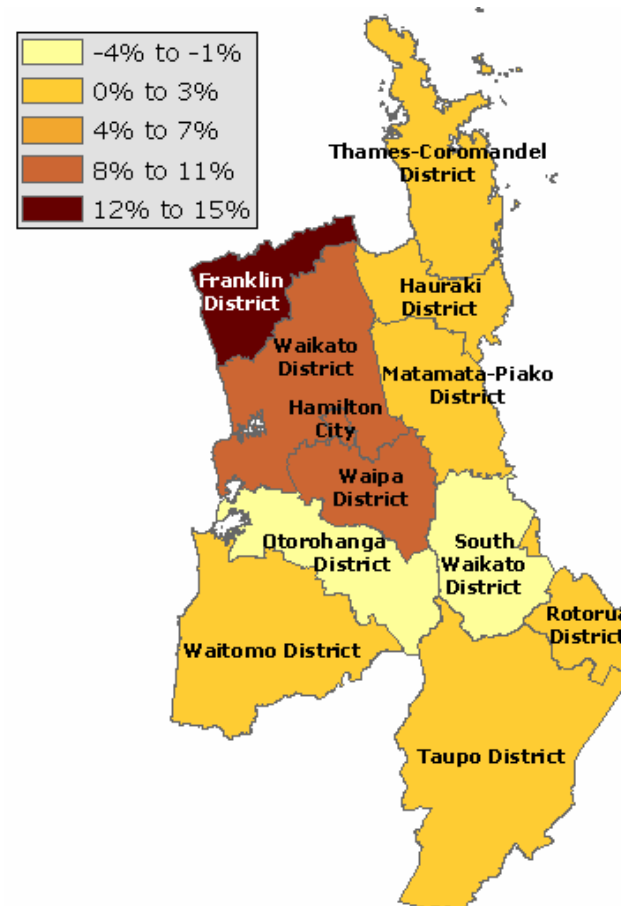


# Usually Resident Population

Percentage change from 2001

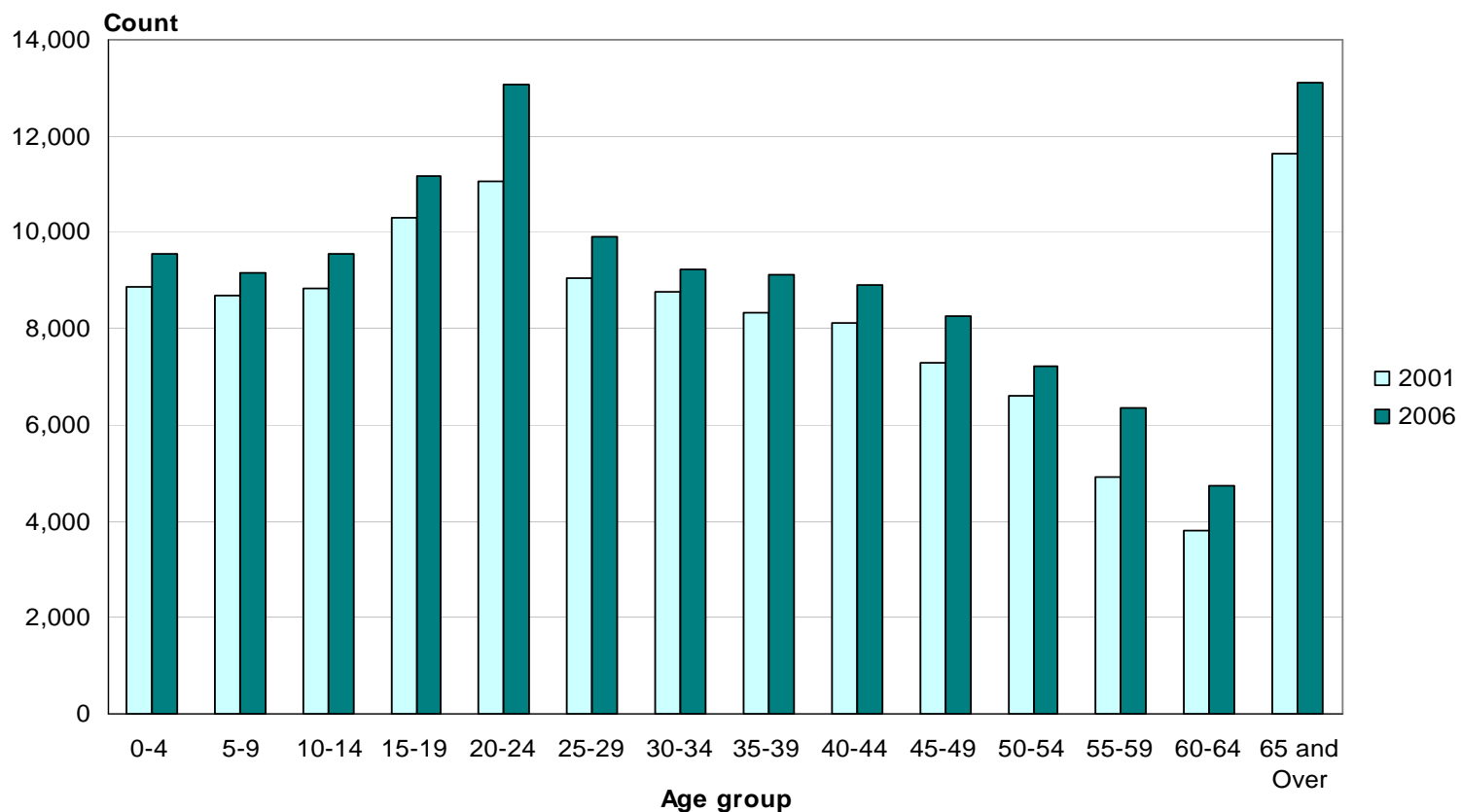
o Waikato Region  
382,713

o Hamilton City  
129,249



# Age (5 years)

## Hamilton City, 2001 and 2006 Censuses



Median age for Hamilton City 31 years

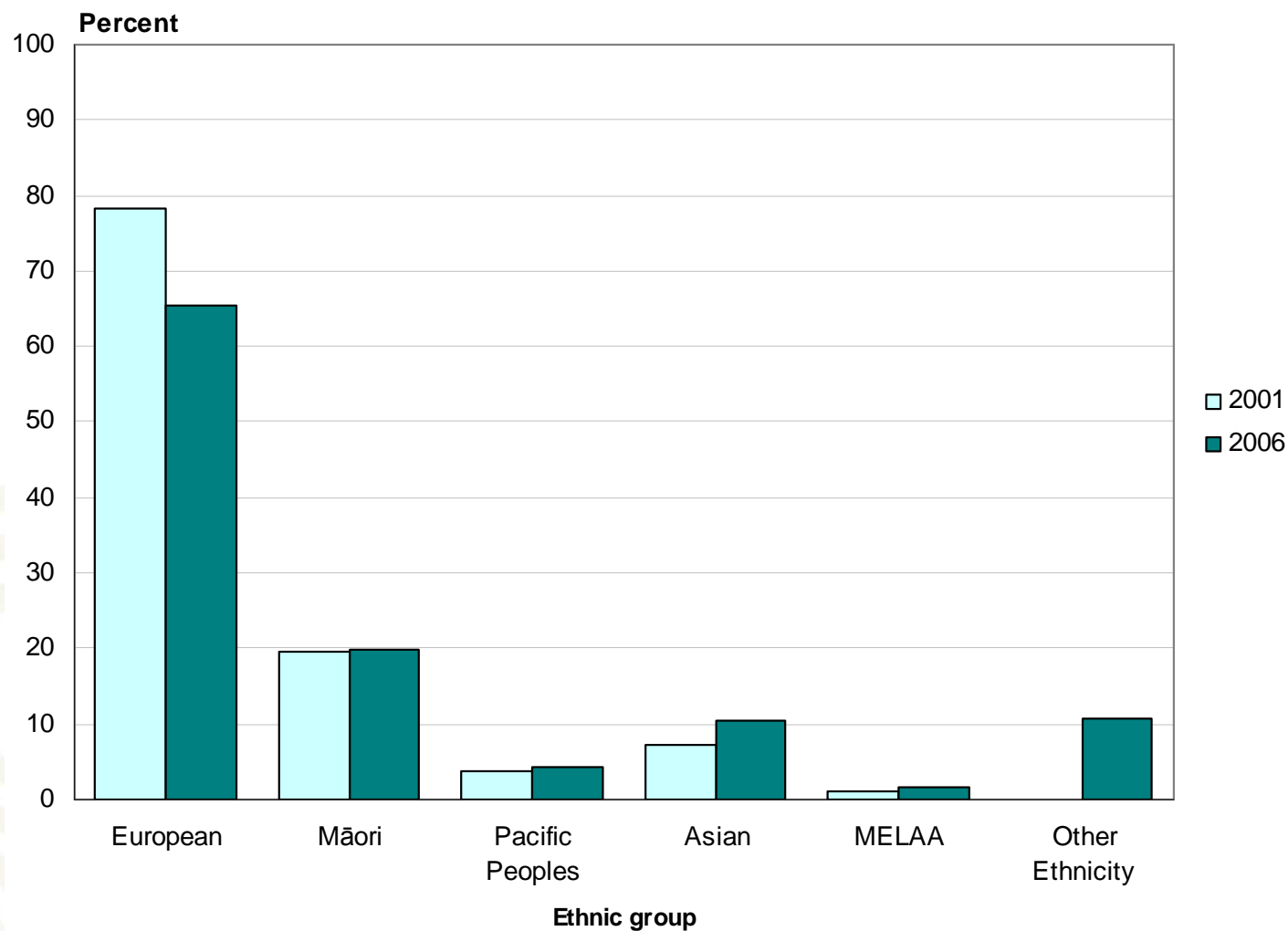
## Who needs a holiday programme?

- Number of children under 15 years
  - o Waikato Region            87,537
  - o Hamilton City              28,254

	0 - 4 Years	5 - 9 Years	10 - 14 Years	Total
Melville	420	420	414	1,254
Bryant	372	375	447	1,197
Glenview	402	390	387	1,176
Swarbrick	393	345	294	1,032
Nawton	351	345	324	1,017
Huntington	357	330	297	984
Bader	354	321	294	963

# Ethnic Group

## Hamilton City, 2001 and 2006 Censuses



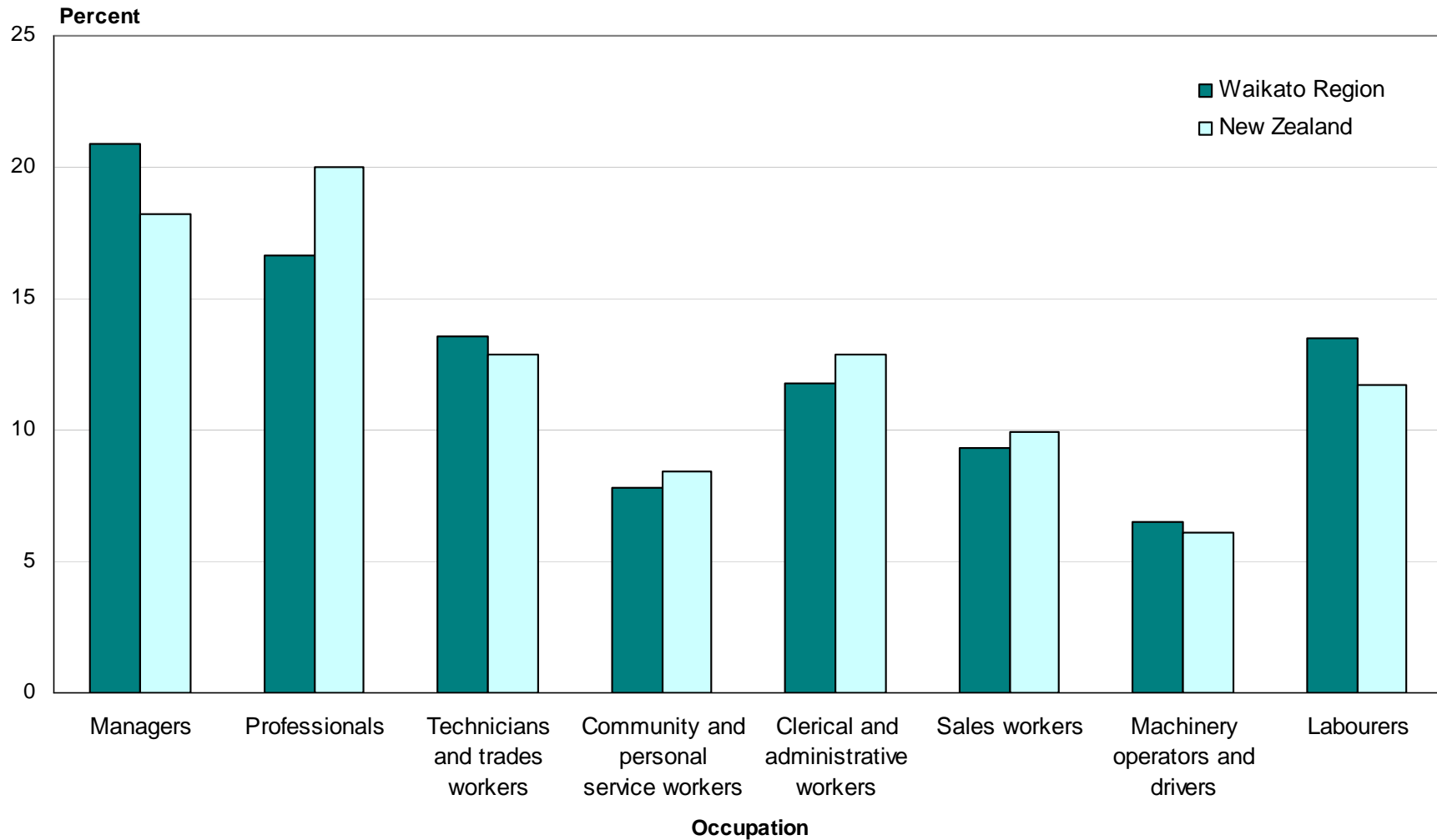
## Religious Affiliation (percent)

### Waikato Region and New Zealand, 2006 Census

	Region	NZ
Christian (not including Māori Christian)	56.9	58.0
No Religion	39.6	37.1
Māori Christian	2.4	1.9
Hindu	1.0	1.8
Buddhist	1.0	1.5
Islam/Muslim	0.7	1.0
Other Religions	0.8	0.7
Spiritualism and New Age Religions	0.6	0.6
Judaism/Jewish	0.1	0.2

# Occupation (ANZSCO)

## Waikato Region and New Zealand, 2006 Census



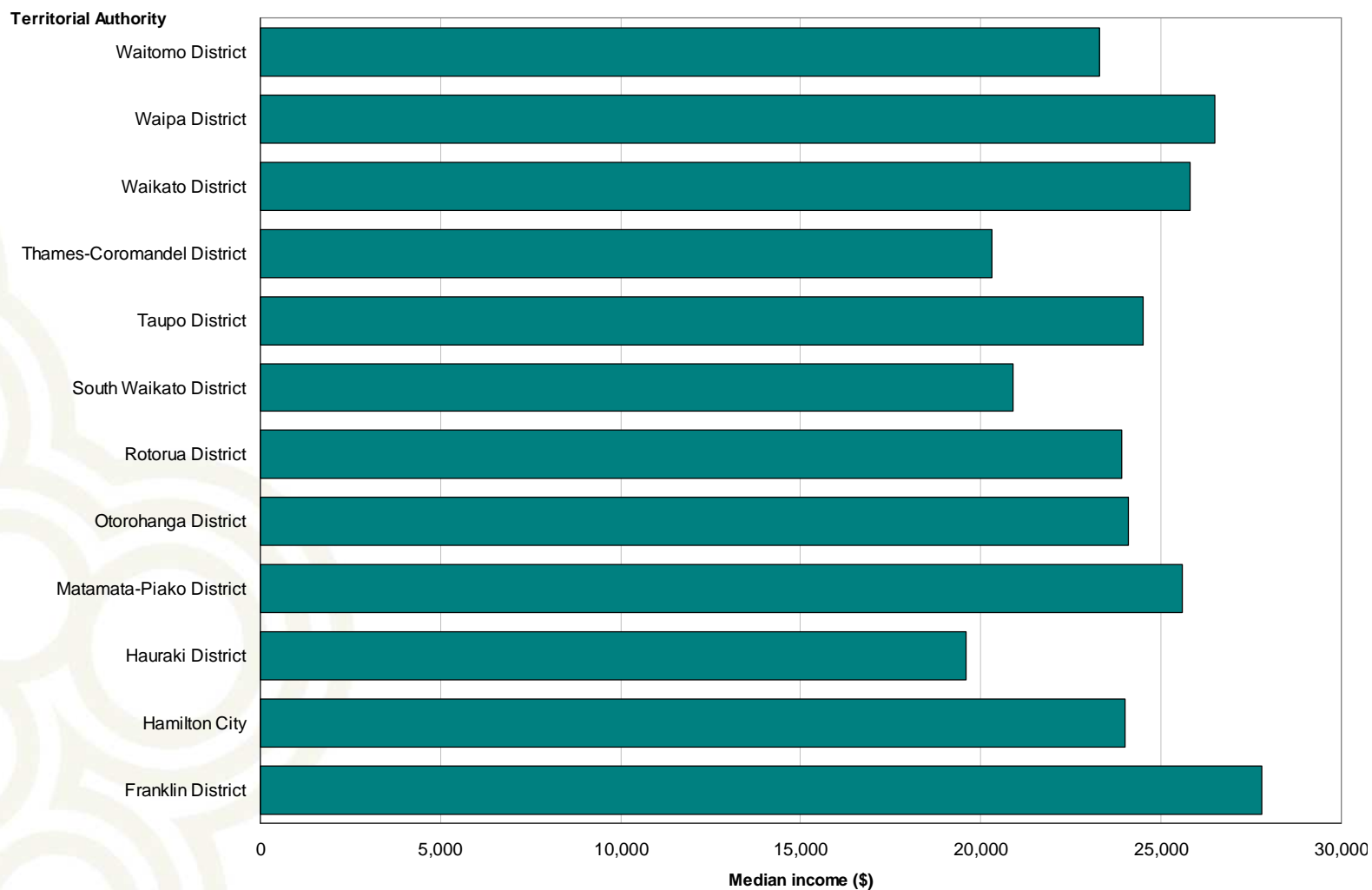
# Unpaid Activities

## Waikato Region and New Zealand, 2006 Census

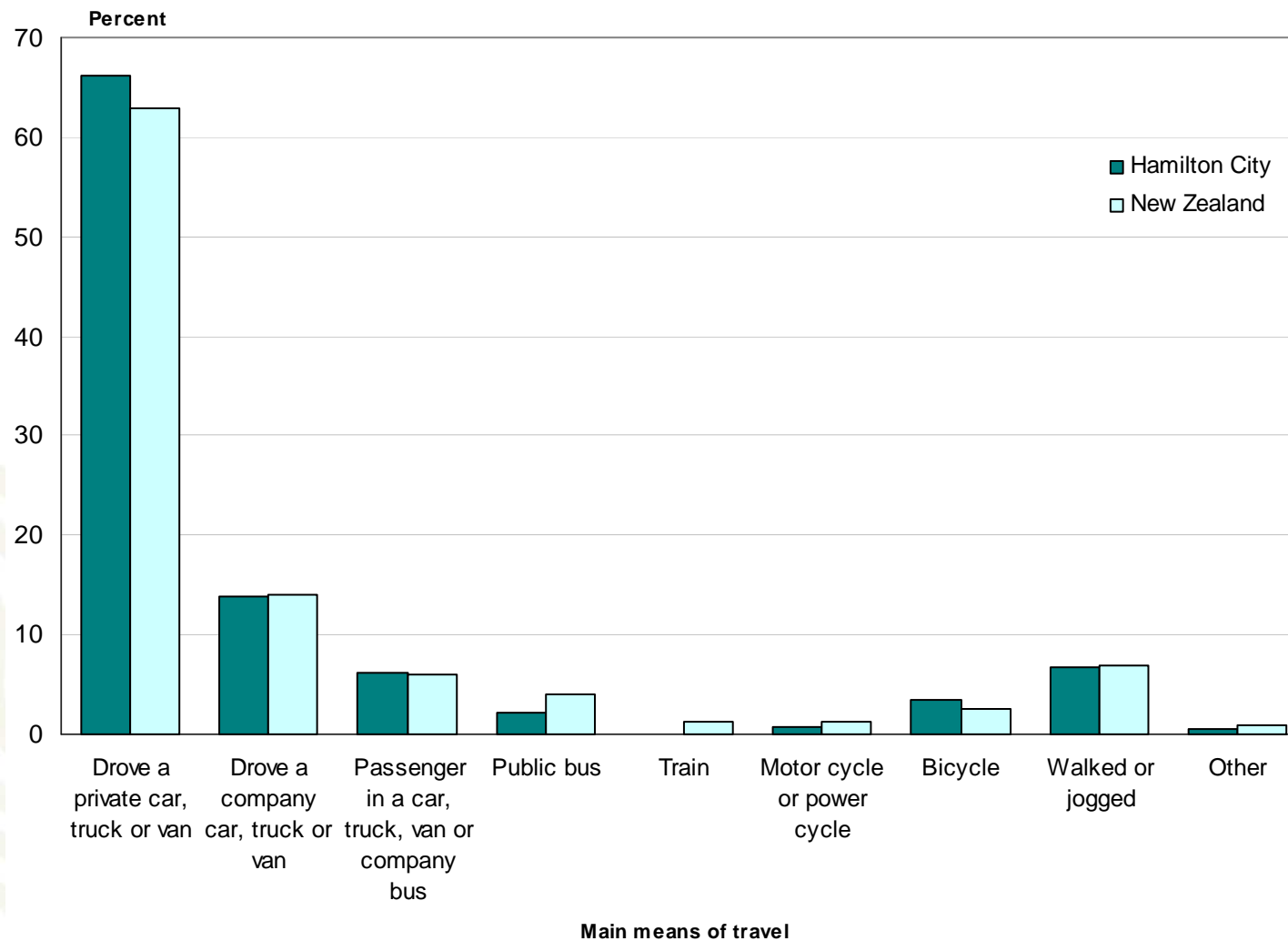
	Region	NZ
Helping someone who is ill or has a disability who does not live in own household	9.5	9.1
Household work for own household	86.5	86.1
Looking after a child who does not live in own household	17.7	16.2
Looking after a child who is a member of own household	33.0	31.6
Looking after a member of own household who is ill or has a disability	8.5	7.8
No activities	10.8	11.3
Other helping or voluntary work	16.8	15.4

# Median Personal Income

## Territorial Authorities in Waikato Region, 2006 Census



## Main Means of Travel to Work Hamilton City and New Zealand, 2006 Census



## Private occupied dwellings

New Zealand 1,471,746

- 8.2 percent increase from 2001

Waikato Region 140,268

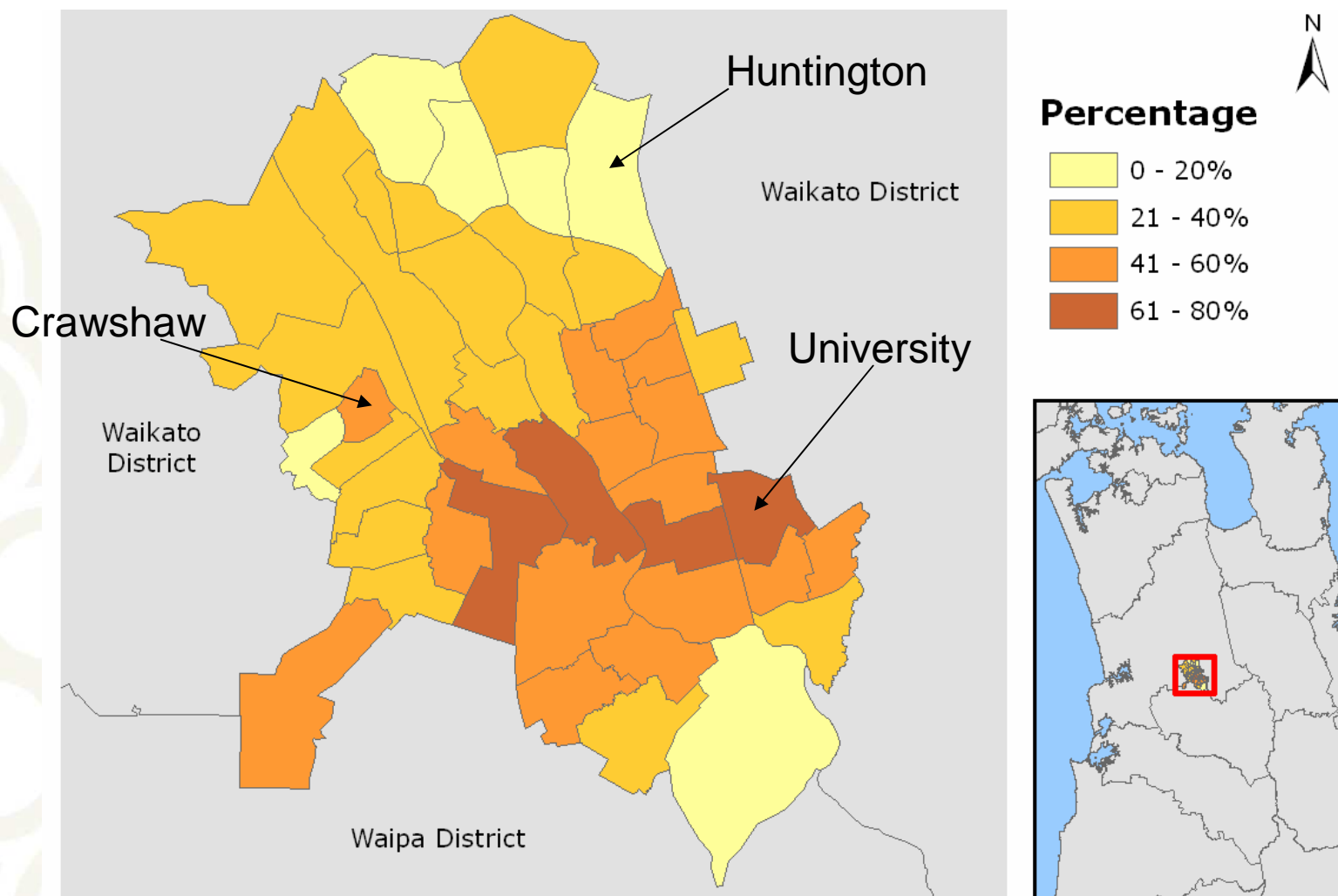
- 8.7 percent increase from 2001

Hamilton City 46,095

- 10.7 percent increase from 2001

# Dwellings Not Owned by Usual Resident(s)

## Hamilton City (Area Unit), 2006 Census



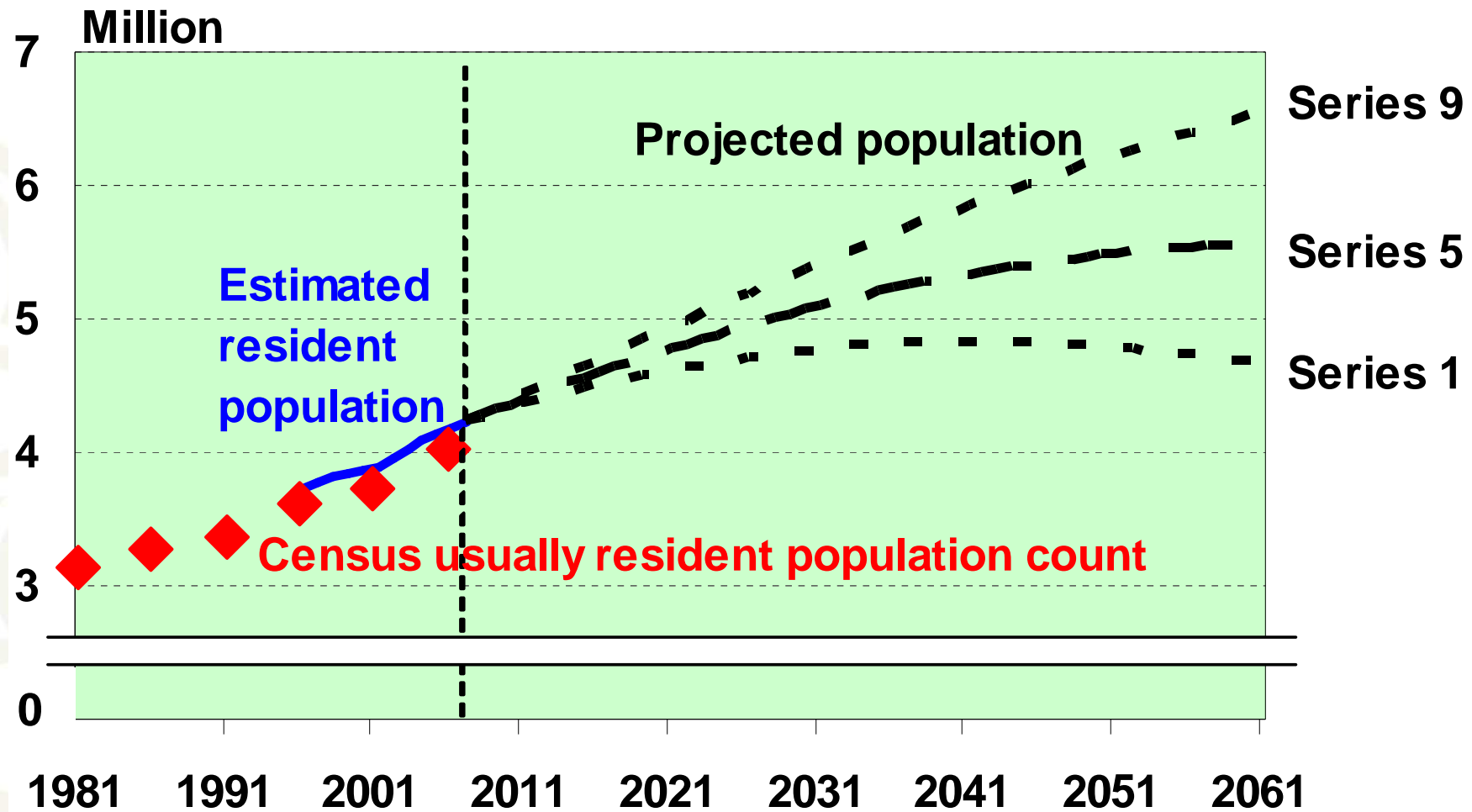
# Population estimates and projections

A decorative graphic in the bottom-left corner consisting of several overlapping, light-colored circles of varying sizes, creating a pattern that resembles a stylized map or a cluster of data points.

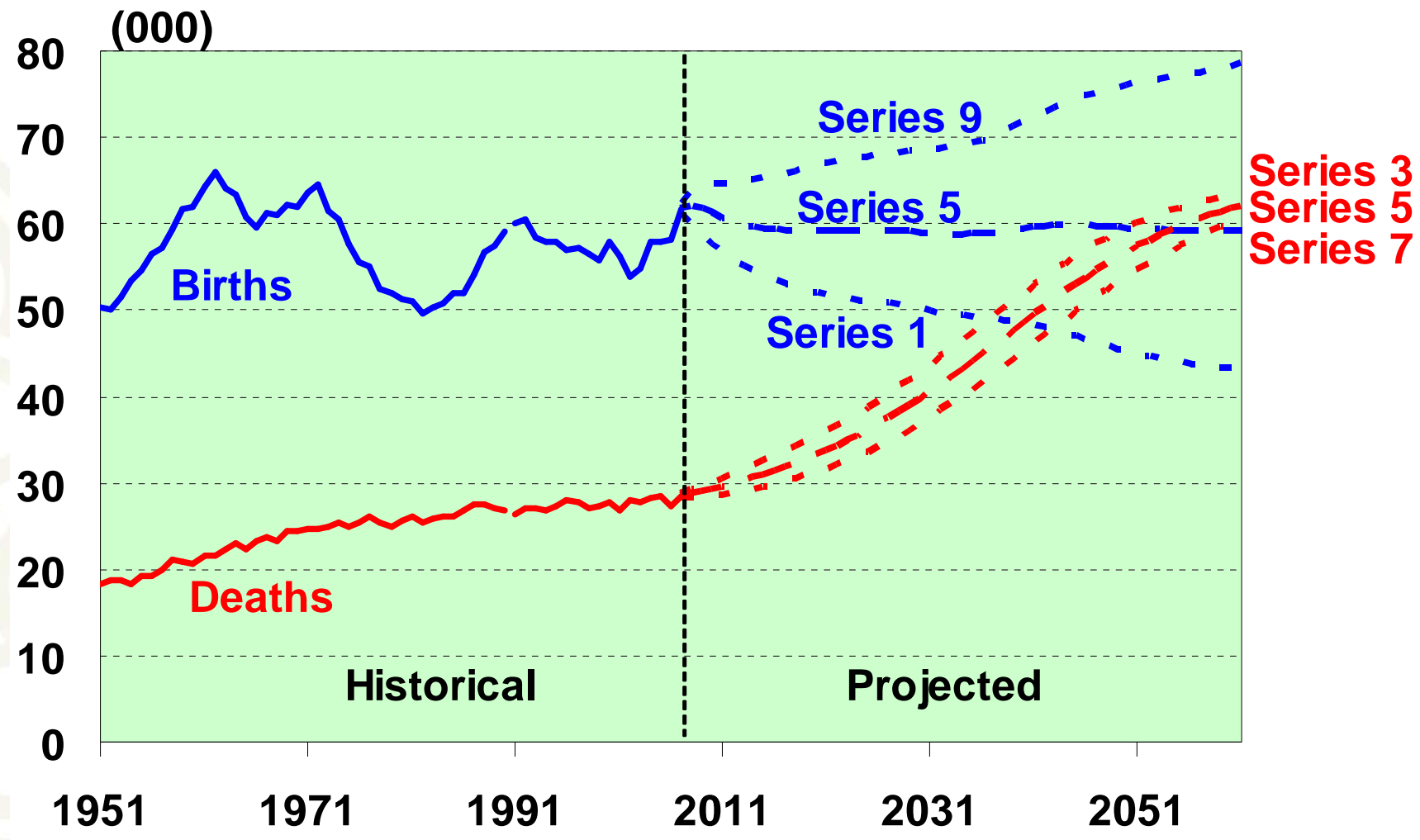
# Estimated resident population

- The best measure of who lives in an area
- A census base (excluding overseas visitors) adjusted for:
  - o Net census undercount
  - o Residents temporarily overseas
  - o Births, deaths and net migration to 30 June 2006
- Limited variables (age, sex, ethnicity)
- Provides base for population projections

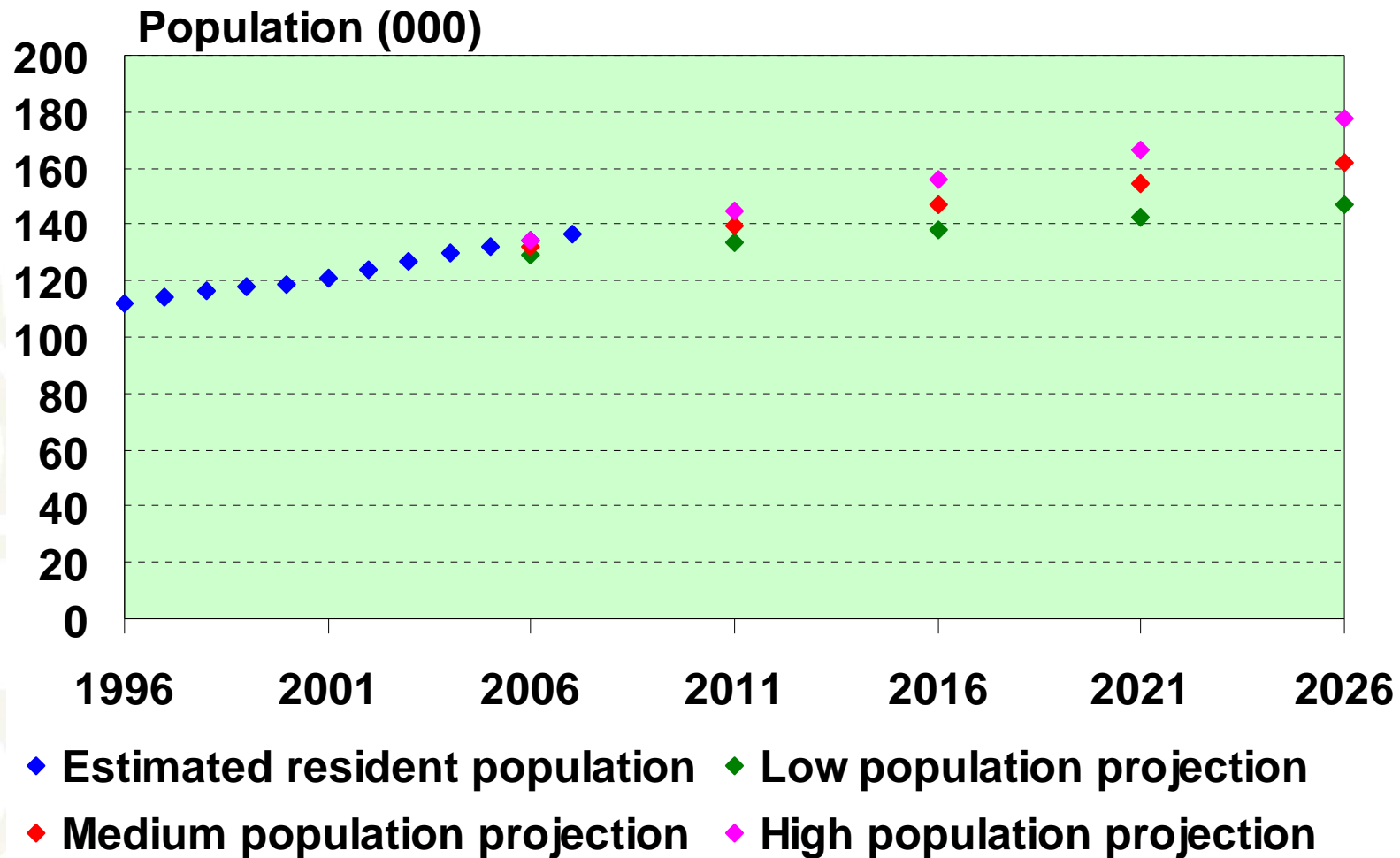
# New Zealand population



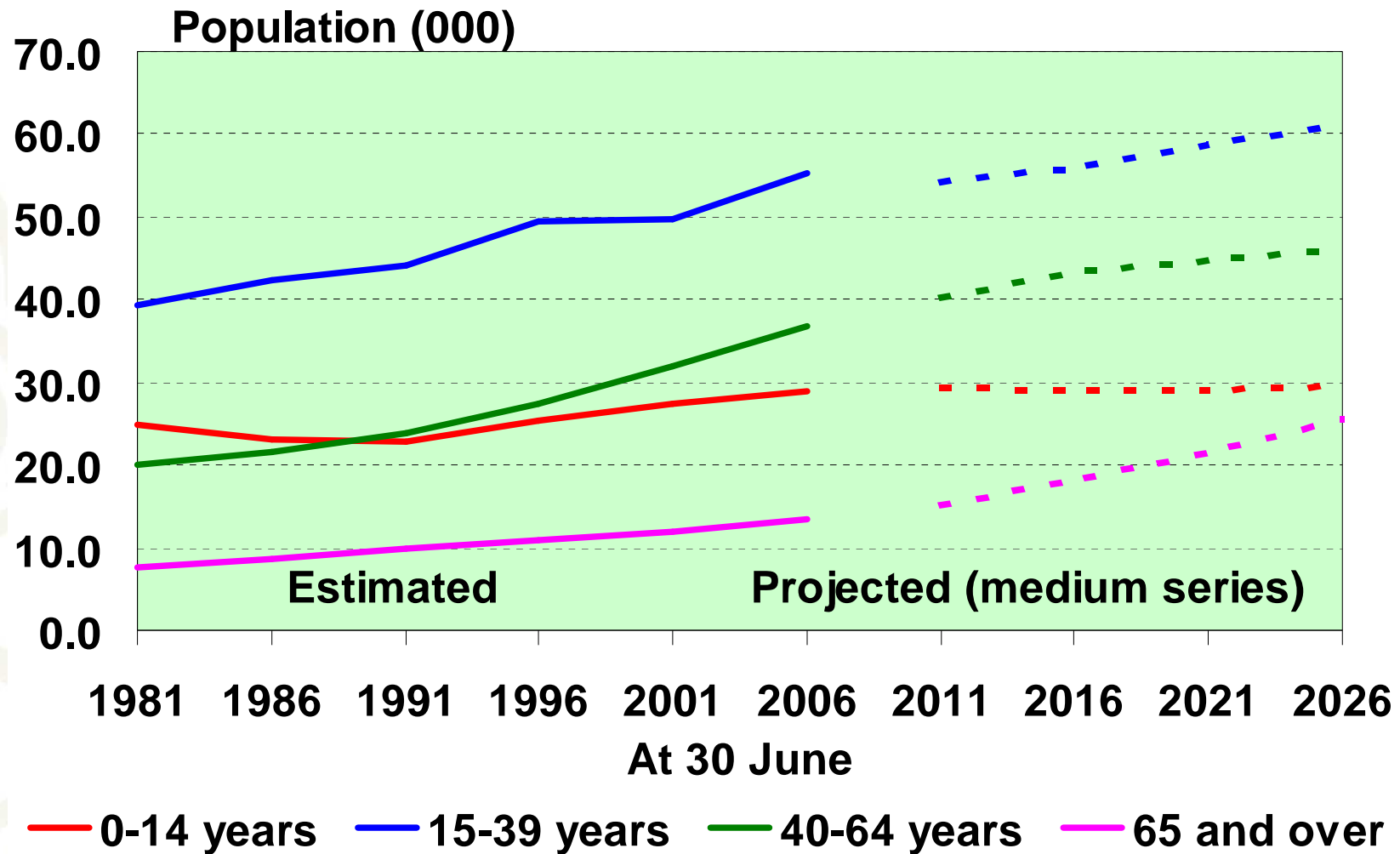
# New Zealand shrinking natural increase



# Population of Hamilton City



# Hamilton City: growth in older ages



## Key release dates: 2006-base population estimates

**21 August 2007:** first 2006-base population estimates

*June 2006 data on Table Builder*

- o National and subnational estimates June 2006
- o Area unit estimates June 2006 (NEW)
- o National estimates June 2007 Quarter

**23 October 2007**

- o Subnational estimates June 2007

**December 2007**

- o Area unit estimates June 2007 (NEW)

## Population Projections – release dates

- National population projections: 24 October 2007
- Subnational population projections: 3 December 2007
- National ethnic projections: 2 April 2008
- National labour force projections: 6 May 2008
- Area unit population projections: mid 2008
- Family and household projections: 2008/09