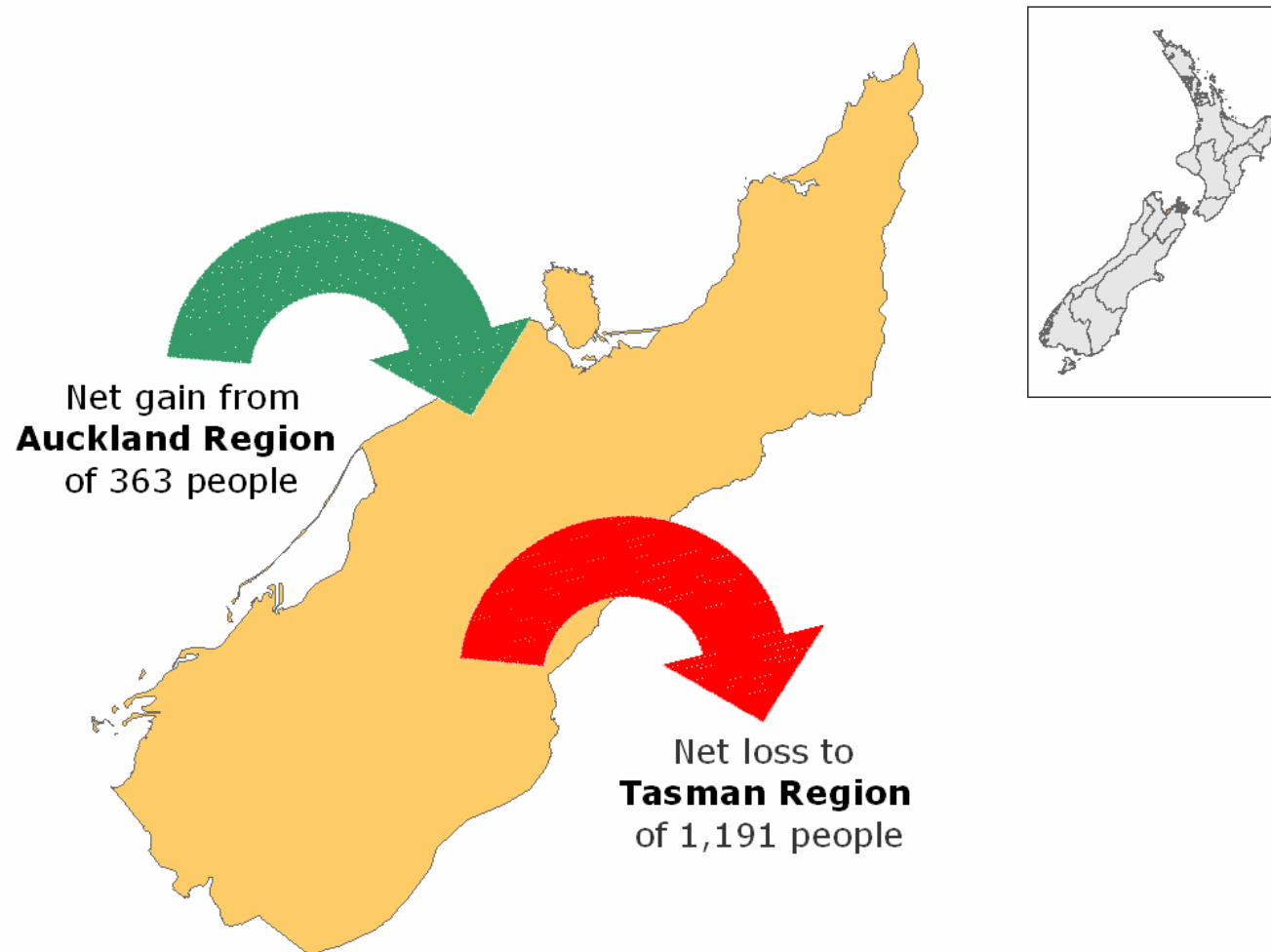


What we look like locally



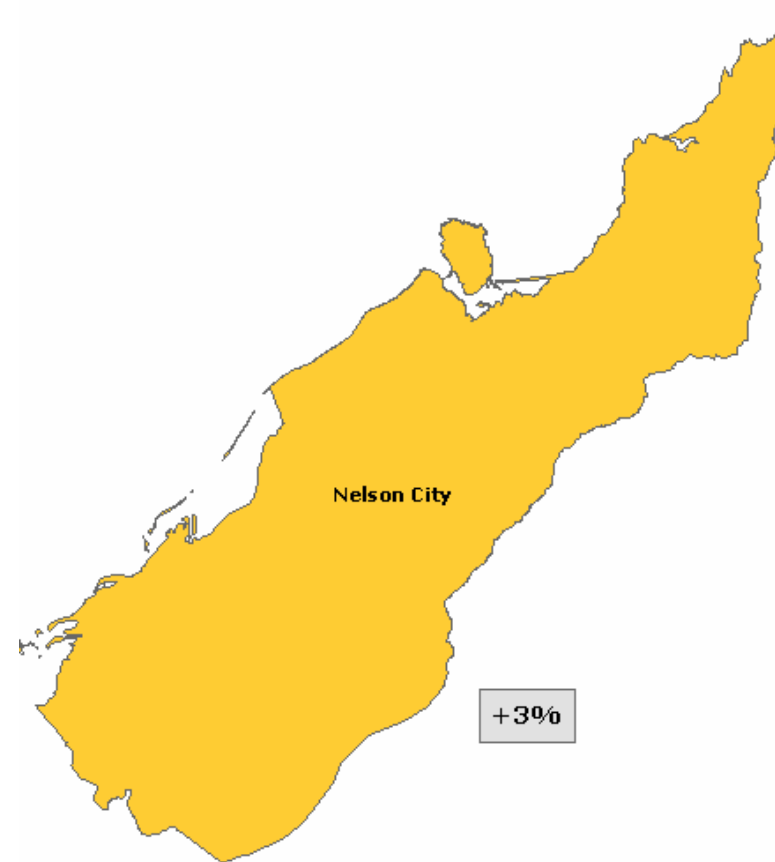
Net Migration for Nelson Region



Usually Resident Population

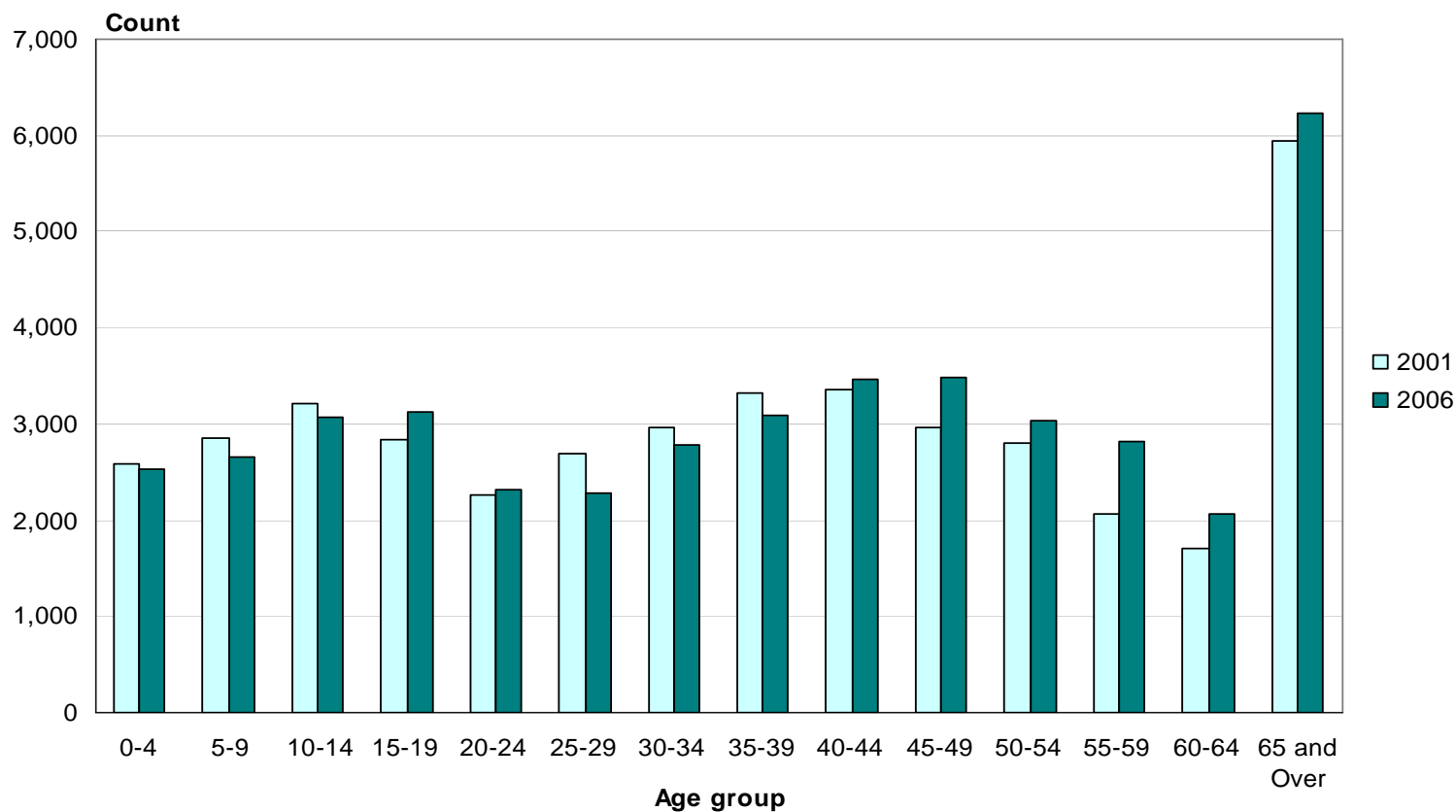
Percentage change from 2001

- o Nelson Region/City
42,891



Age (5 years)

Nelson City, 2001 and 2006 Censuses



Median age for Nelson City 38.5 years

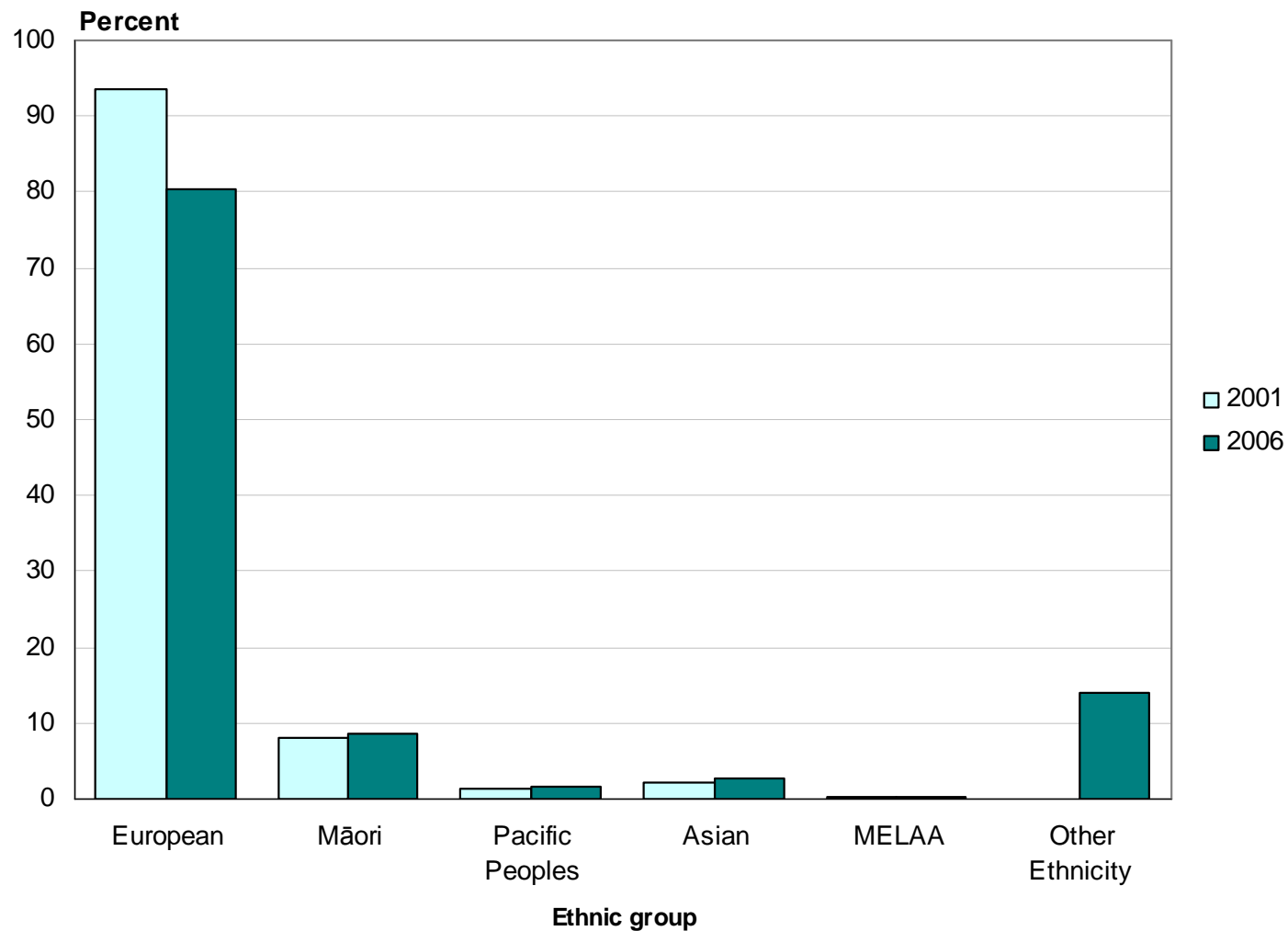
Who needs a holiday programme?

- Number of children under 15 years
 - o Nelson City 8,241

	0 - 4 Years	5 - 9 Years	10 - 14 Years	Total
Enner Glynn	198	207	237	642
Langbein	150	207	270	627
Washington	225	189	195	606
Isel Park	174	168	195	534
Maitlands	150	174	171	495
Grampians	162	114	141	417
Toi Toi	132	132	132	396

Ethnic Group

Nelson Region, 2001 and 2006 Censuses



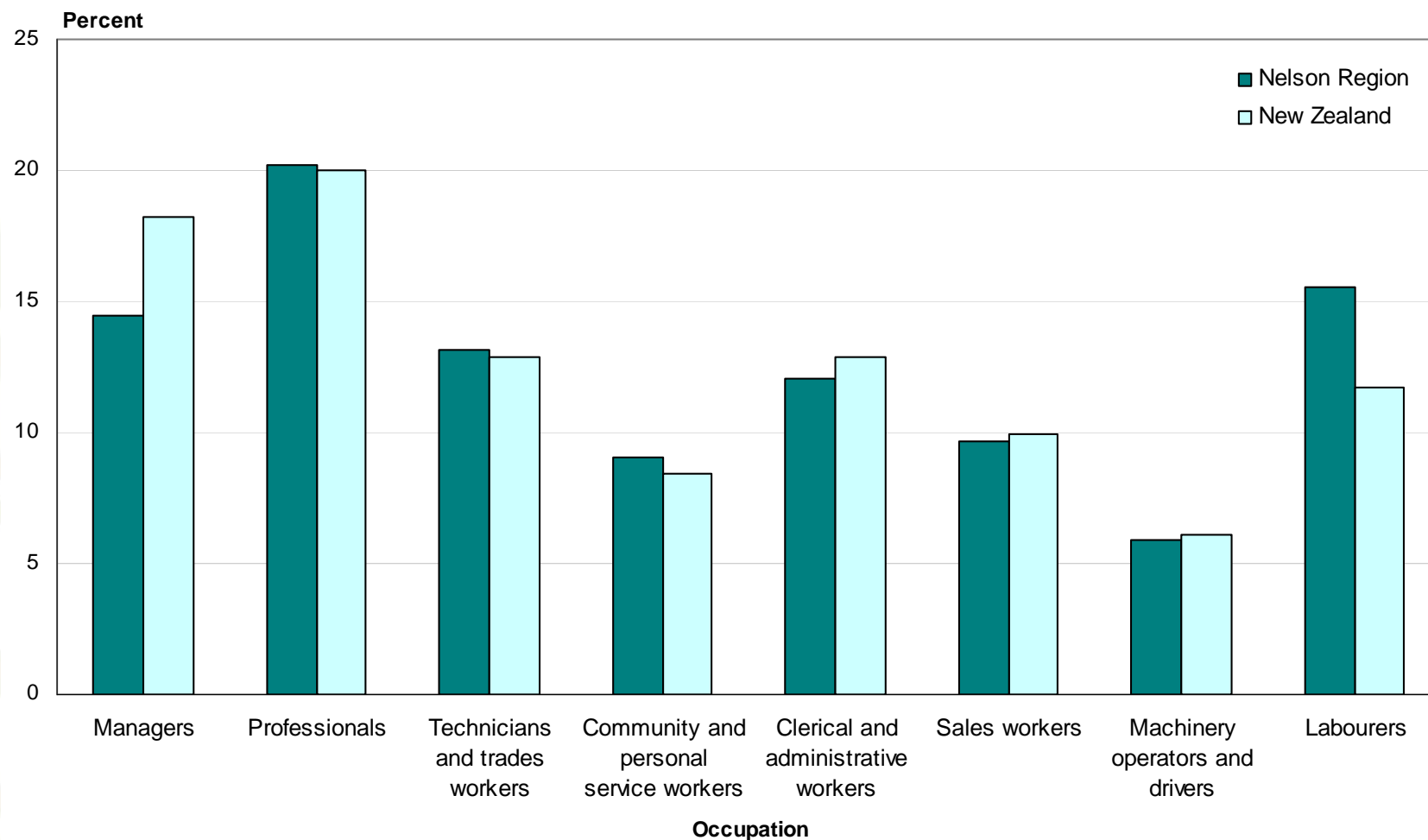
Religious Affiliation (percent)

Nelson Region and New Zealand, 2006 Census

	Region	NZ
Christian (not including Māori Christian)	51.3	58.0
No Religion	47.4	37.1
Māori Christian	0.5	1.9
Hindu	0.4	1.8
Buddhist	1.4	1.5
Islam/Muslim	0.2	1.0
Other Religions	0.4	0.7
Spiritualism and New Age Religions	1.0	0.6
Judaism/Jewish	0.2	0.2

Occupation (ANZSCO)

Nelson Region and New Zealand, 2006 Census



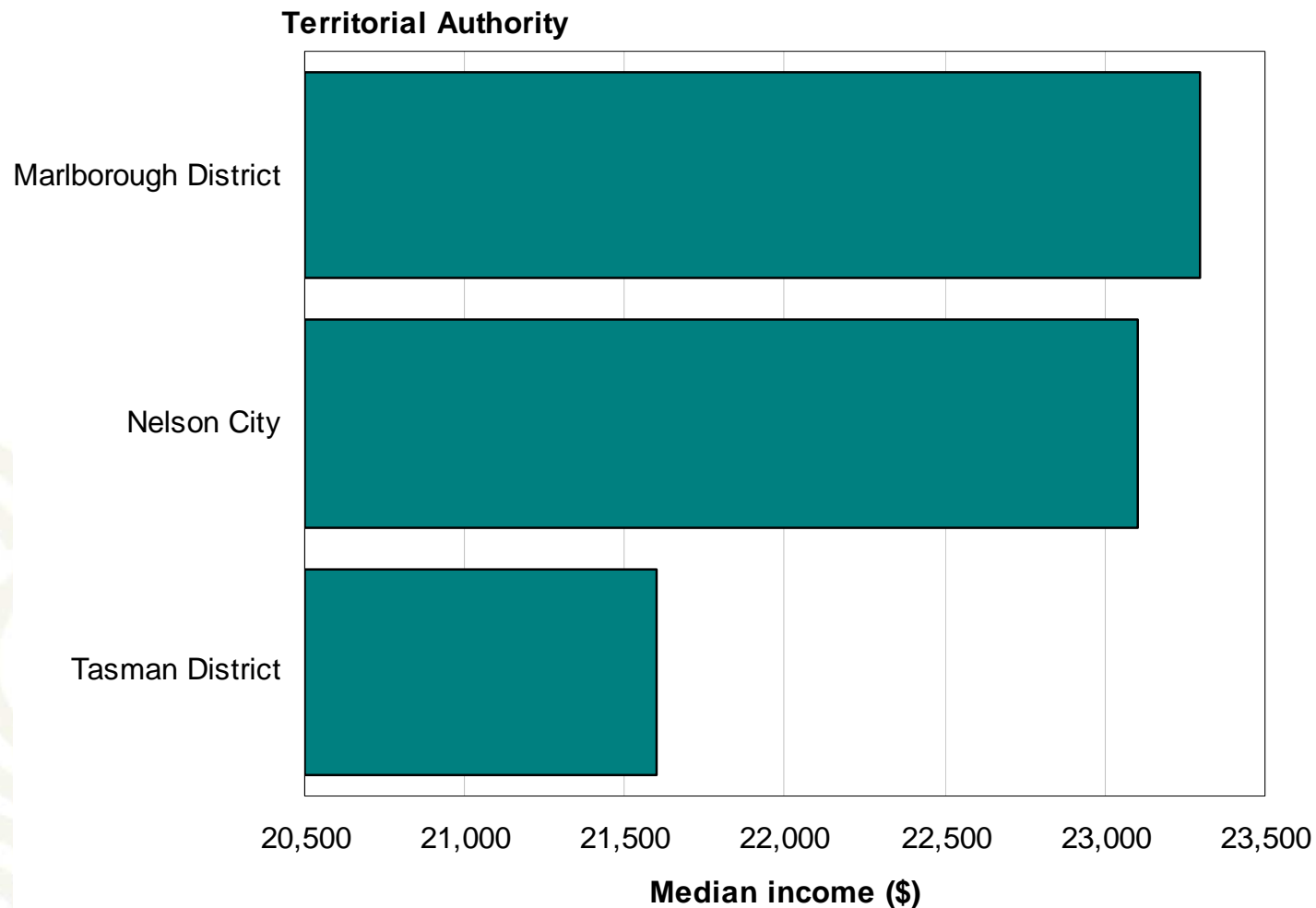
Unpaid Activities

Nelson Region and New Zealand, 2006 Census

	Region	NZ
Helping someone who is ill or has a disability who does not live in own household	10.4	9.1
Household work for own household	87.6	86.1
Looking after a child who does not live in own household	17.5	16.2
Looking after a child who is a member of own household	30.3	31.6
Looking after a member of own household who is ill or has a disability	7.4	7.8
No activities	10.0	11.3
Other helping or voluntary work	16.8	15.4

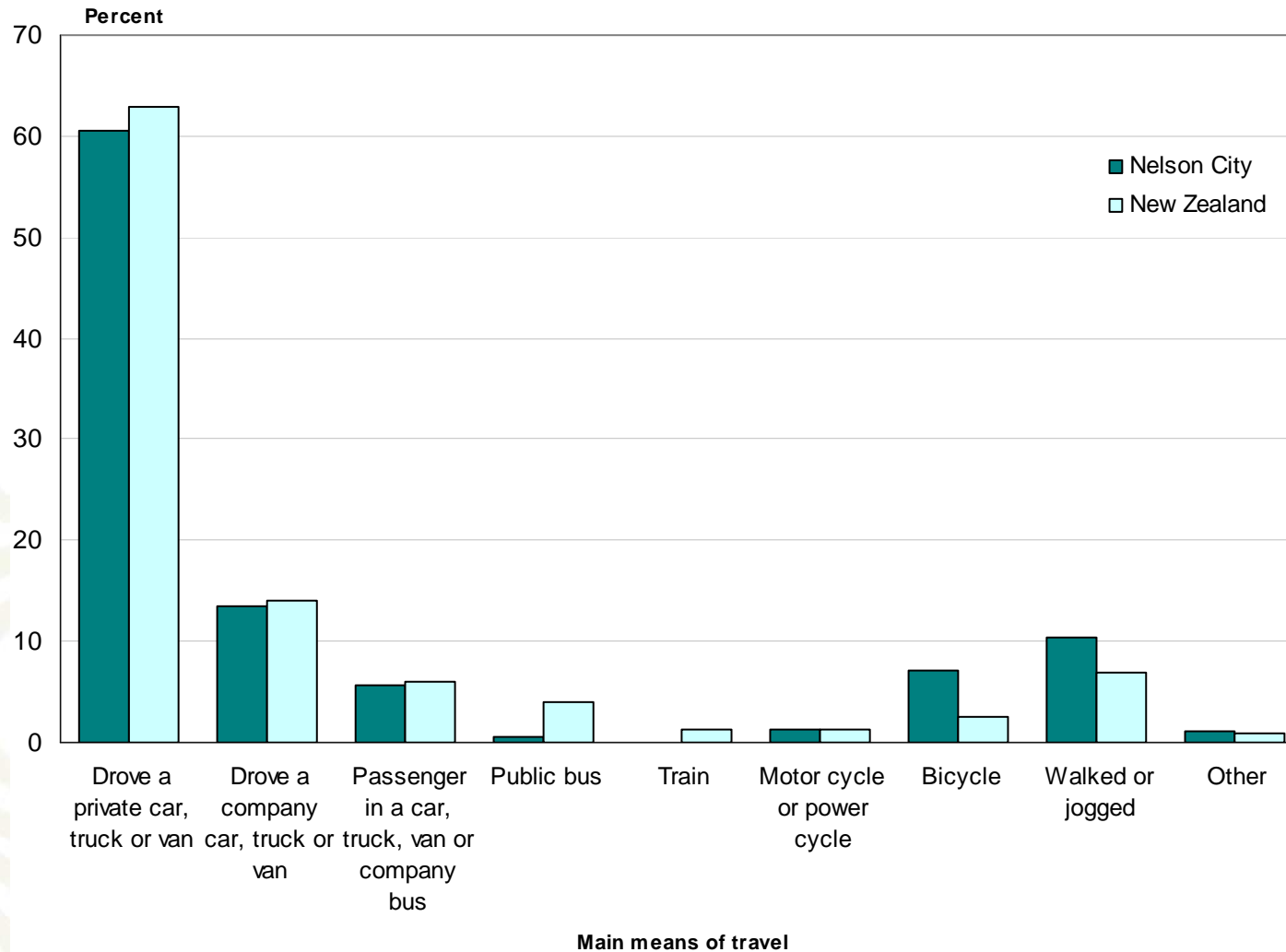
Median Personal Income

Selected Territorial Authorities, 2006 Census



Main Means of Travel to Work

Nelson City and New Zealand, 2006 Census



Private occupied dwellings

New Zealand

1,471,746

- 8.2 percent increase from 2001

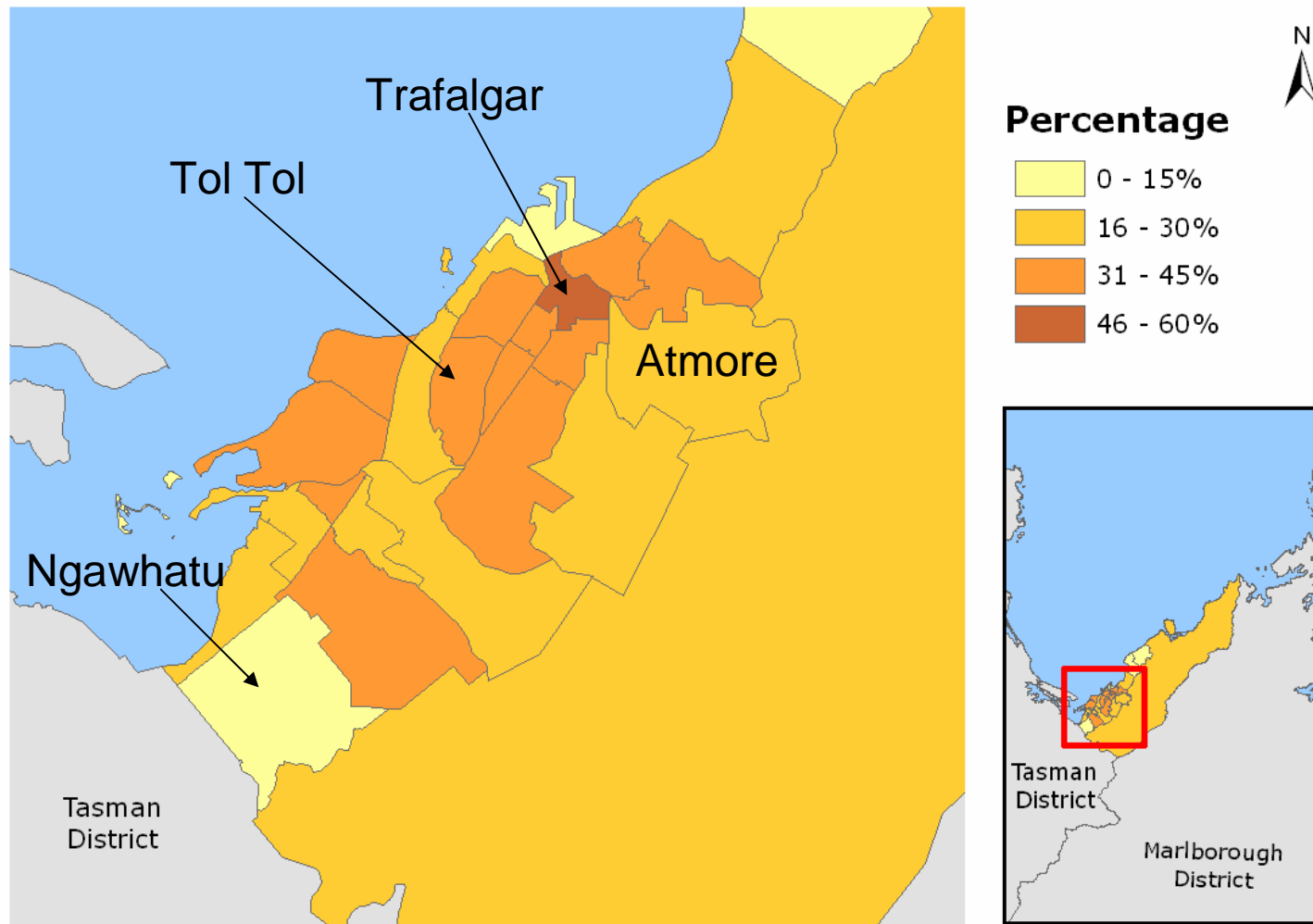
Nelson Region

17,190

- 6.6 percent increase from 2001

Dwellings Not Owned by Usual Resident(s)

Nelson City (Area Unit), 2006 Census



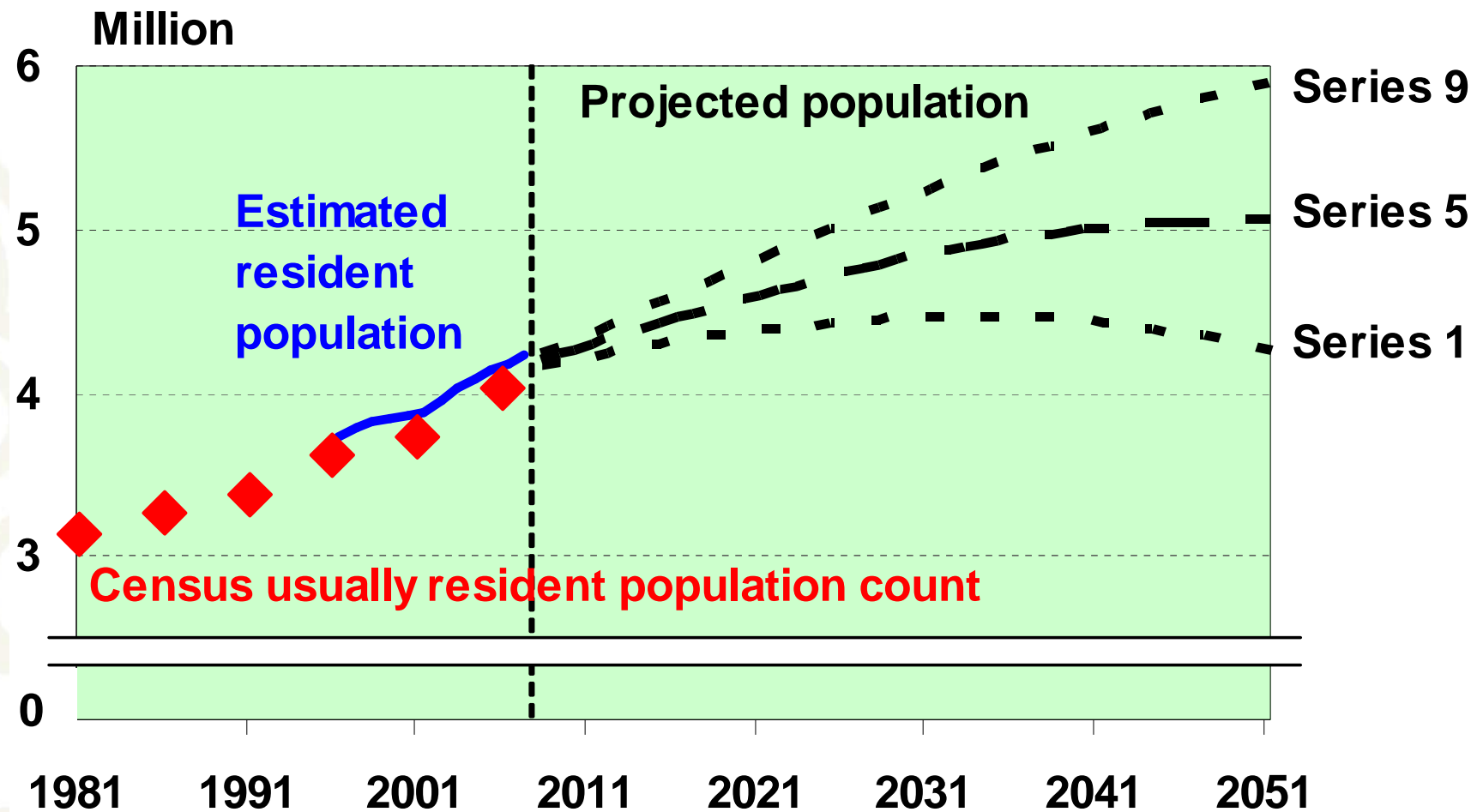
Population estimates and projections

A decorative graphic in the bottom-left corner consisting of several overlapping, light-colored circles of varying sizes, creating a pattern that resembles a stylized map or a cluster of data points.

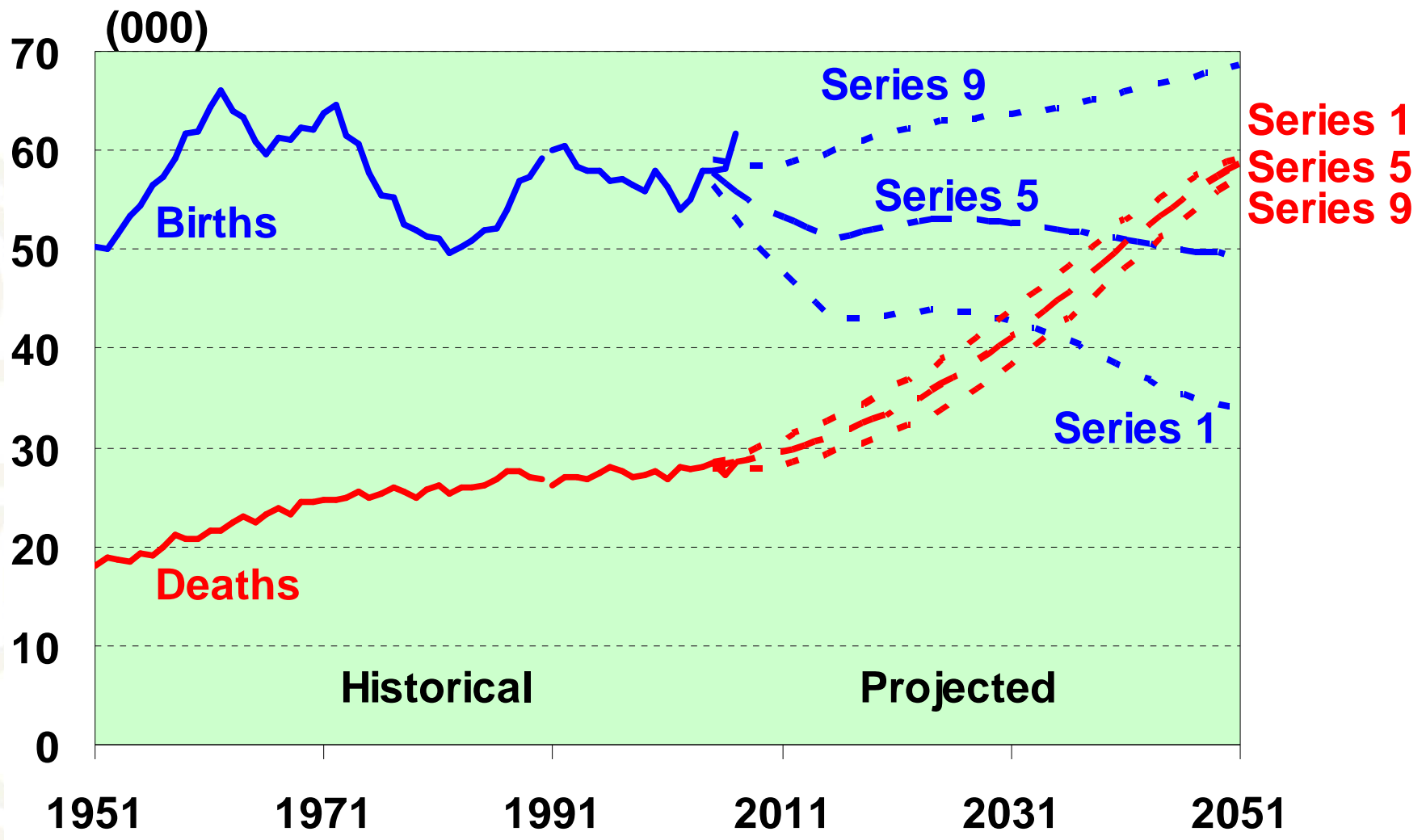
Estimated resident population

- The best measure of who lives in an area
- A census base (excluding overseas visitors) adjusted for:
 - Net census undercount
 - Residents temporarily overseas
 - Births, deaths and net migration to 30 June 2006
- Limited variables (age, sex, ethnicity)
- Provides base for population projections

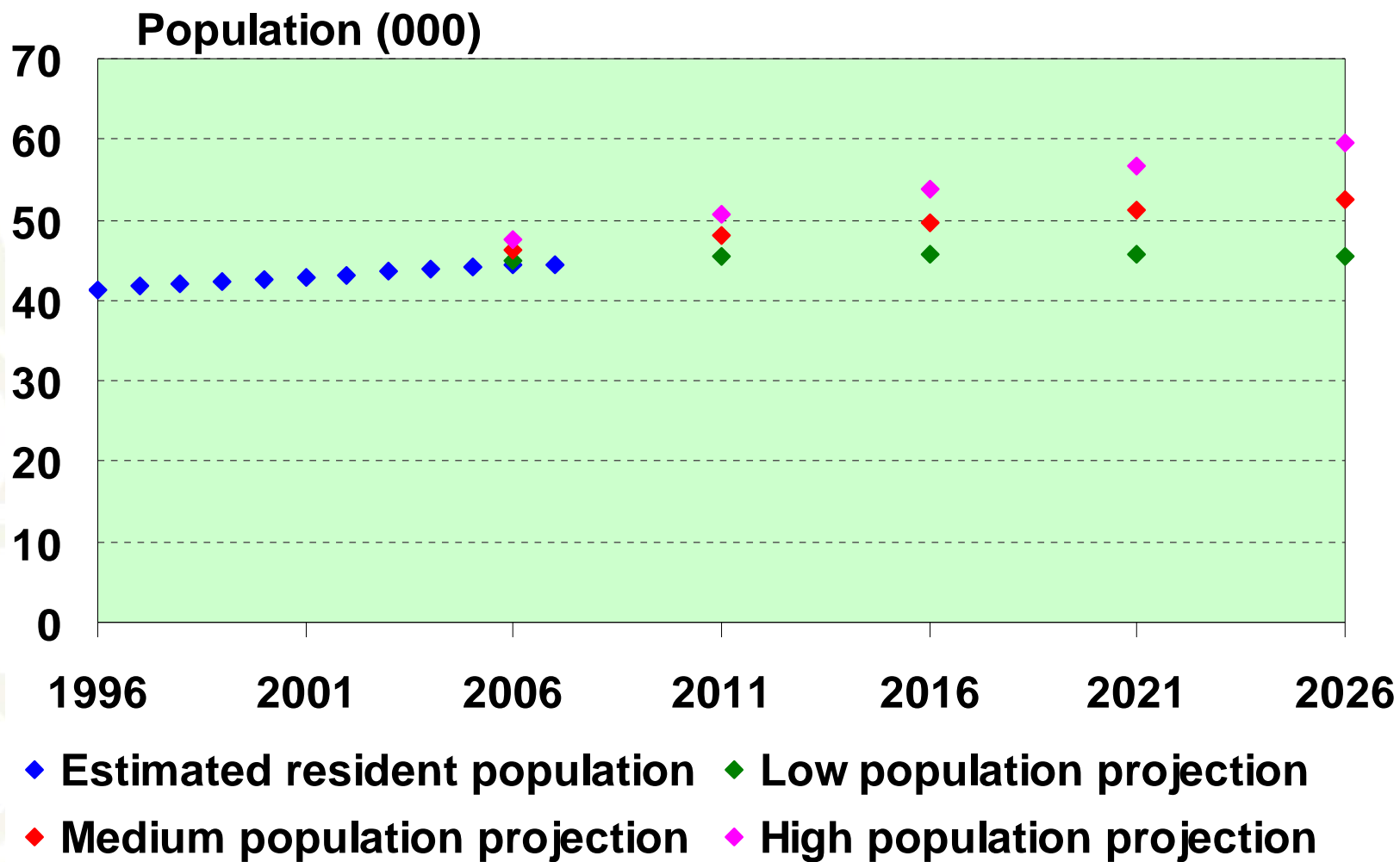
New Zealand population



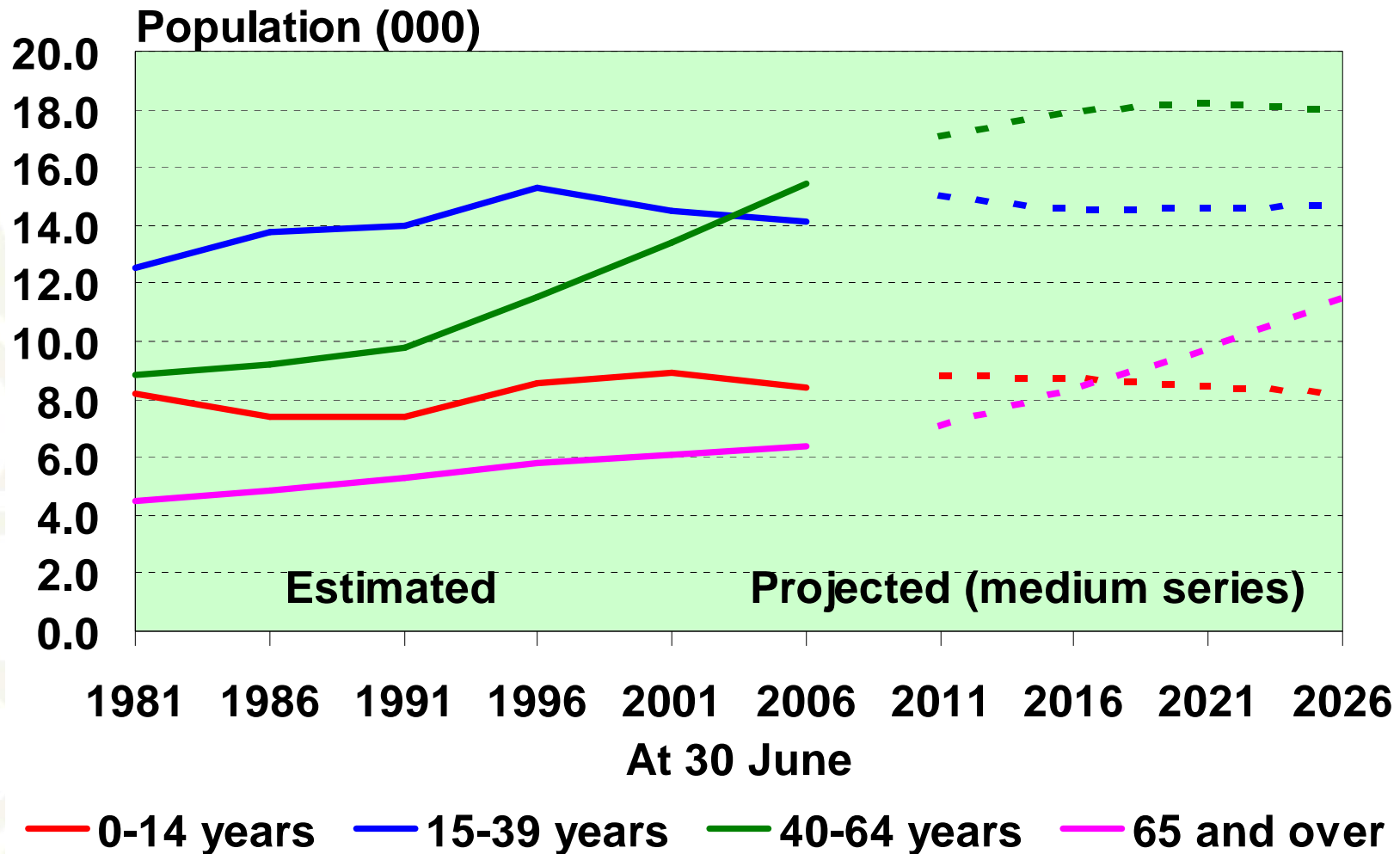
New Zealand shrinking natural increase



Population of Nelson City



Nelson City: growth in older ages



Key release dates: 2006-base population estimates

21 August 2007: first 2006-base population estimates

June 2006 data on Table Builder

- o National and subnational estimates June 2006
- o Area unit estimates June 2006 (NEW)
- o National estimates June 2007 Quarter

23 October 2007

- o Subnational estimates June 2007

December 2007

- o Area unit estimates June 2007 (NEW)

Population Projections – release dates

- National population projections: 24 October 2007
- Subnational population projections: 3 December 2007
- National ethnic projections: 2 April 2008
- National labour force projections: 6 May 2008
- Area unit population projections: mid 2008
- Family and household projections: 2008/09