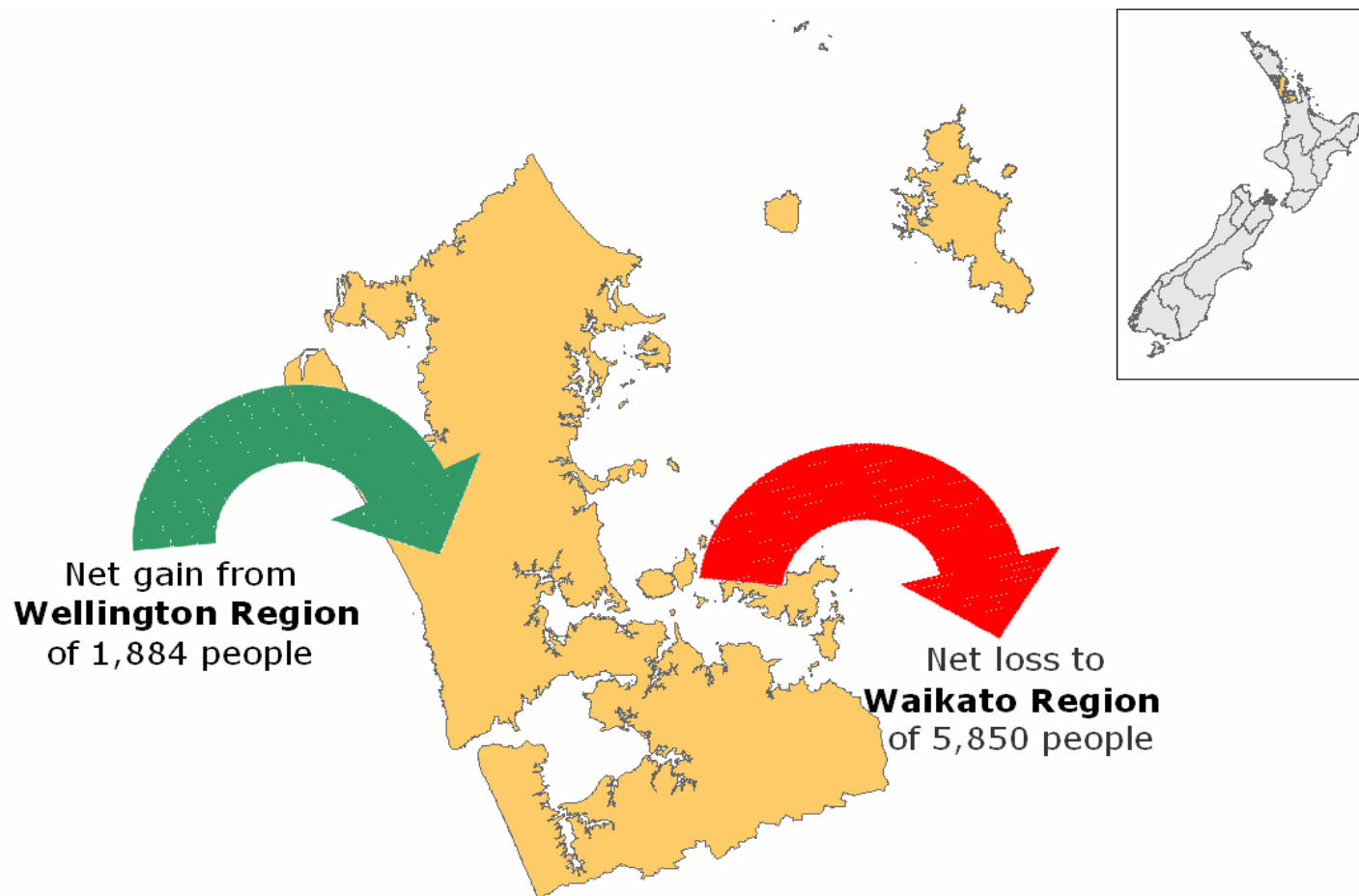


What we look like locally



Net Migration for Auckland Region

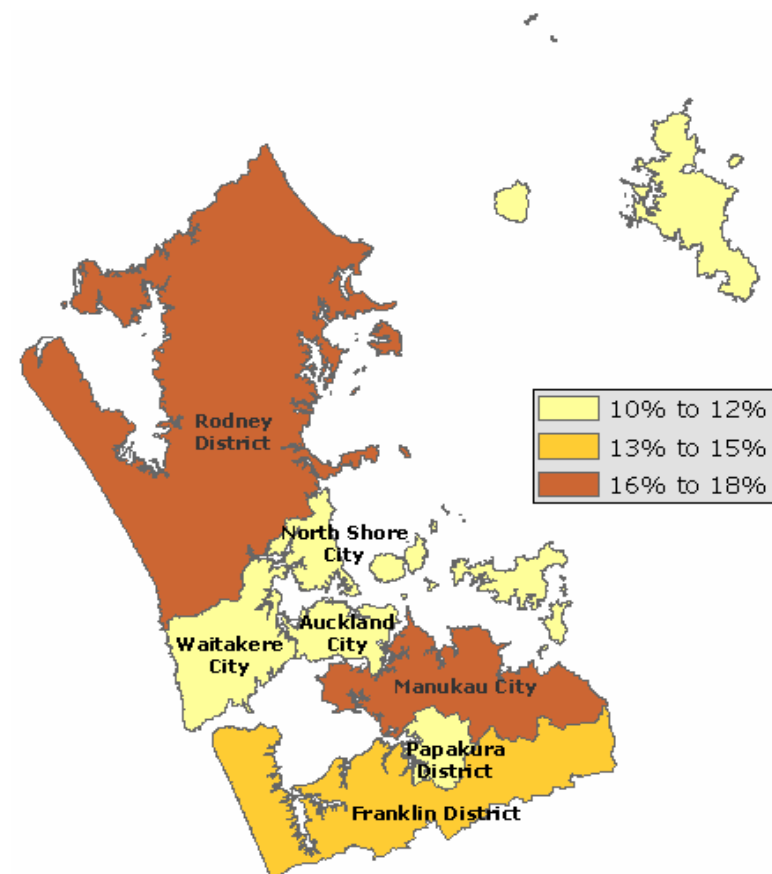


Usually Resident Population

Percentage change from 2001

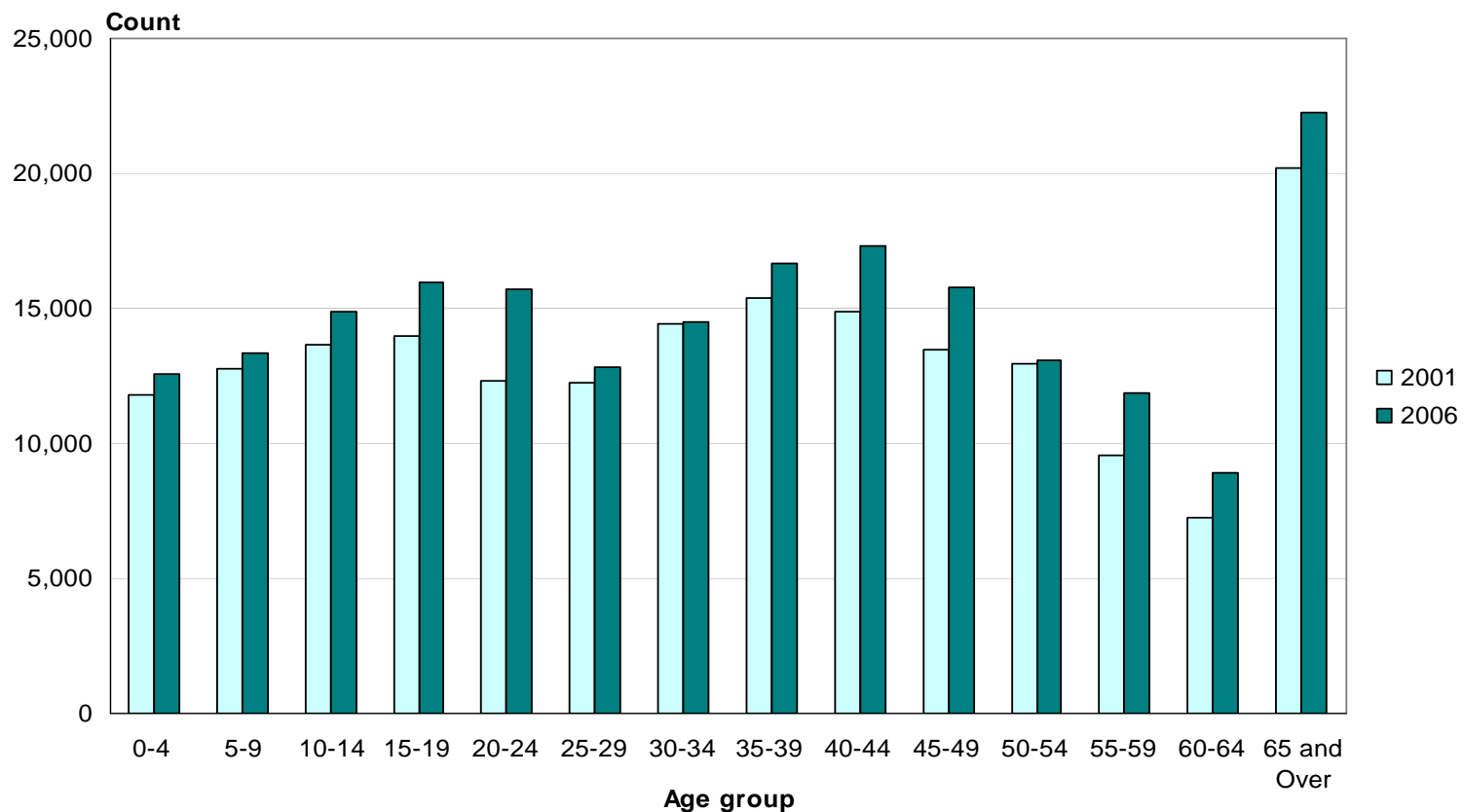
o Auckland Region
1,303,068

o North Shore City
205,608



Age (5 years)

North Shore City, 2001 and 2006 Censuses



Median age for North Shore City 35.7 years

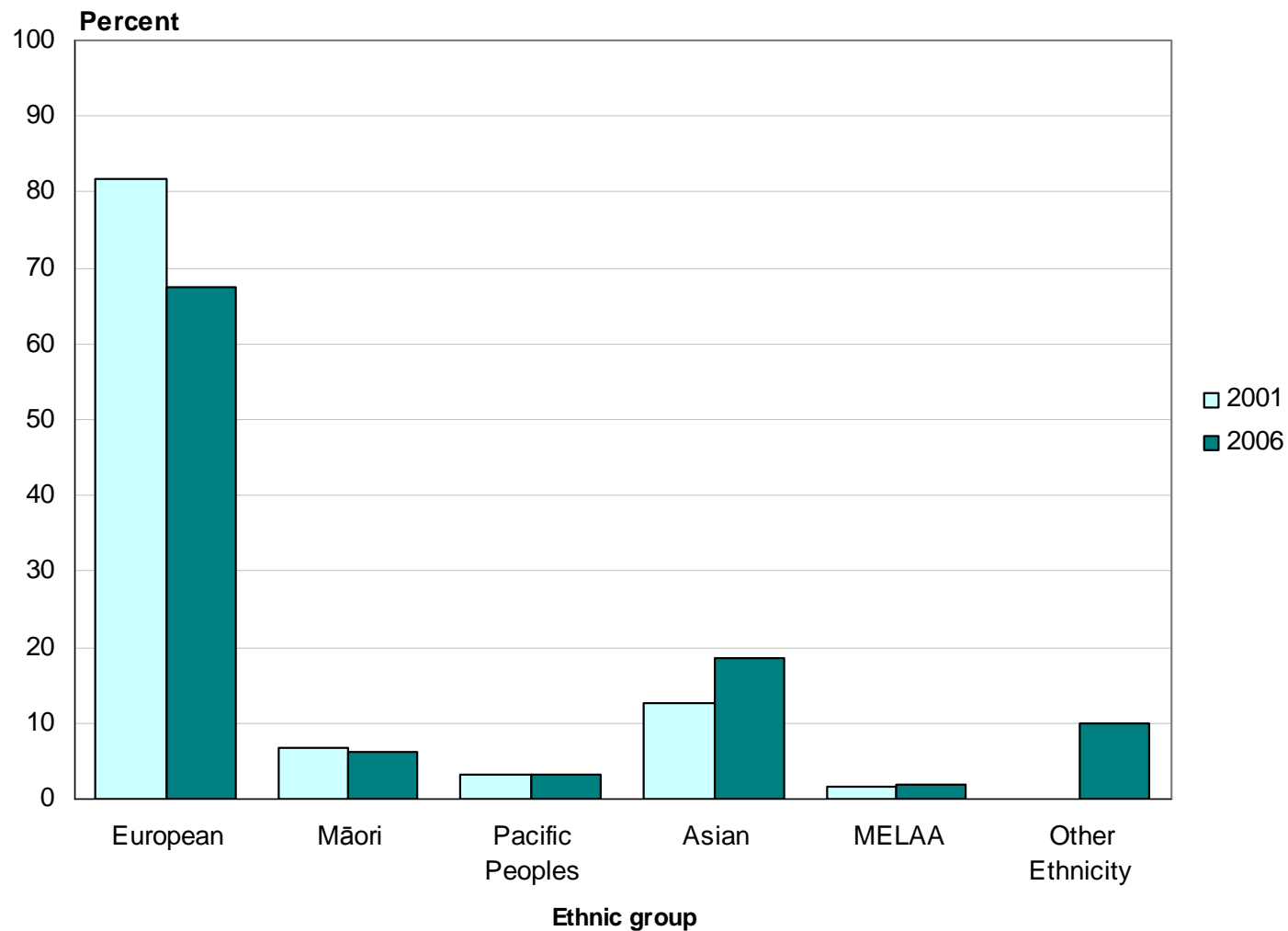
Who needs a holiday programme?

- Number of children under 15 years
 - o Auckland Region 288,576
 - o North Shore City 40,767

| | 0 - 4 Years | 5 - 9 Years | 10 - 14 Years | Total |
|------------------|-------------|-------------|---------------|-------|
| Greenhithe | 519 | 600 | 546 | 1,665 |
| Sunnynook | 414 | 435 | 540 | 1,392 |
| Beachhaven North | 438 | 432 | 468 | 1,338 |
| Target Road | 450 | 393 | 399 | 1,239 |
| Mt Victoria | 366 | 405 | 396 | 1,167 |
| Glendhu | 384 | 381 | 360 | 1,122 |
| Unsworth Heights | 375 | 348 | 366 | 1,086 |

Ethnic Group

North Shore City, 2001 and 2006 Censuses



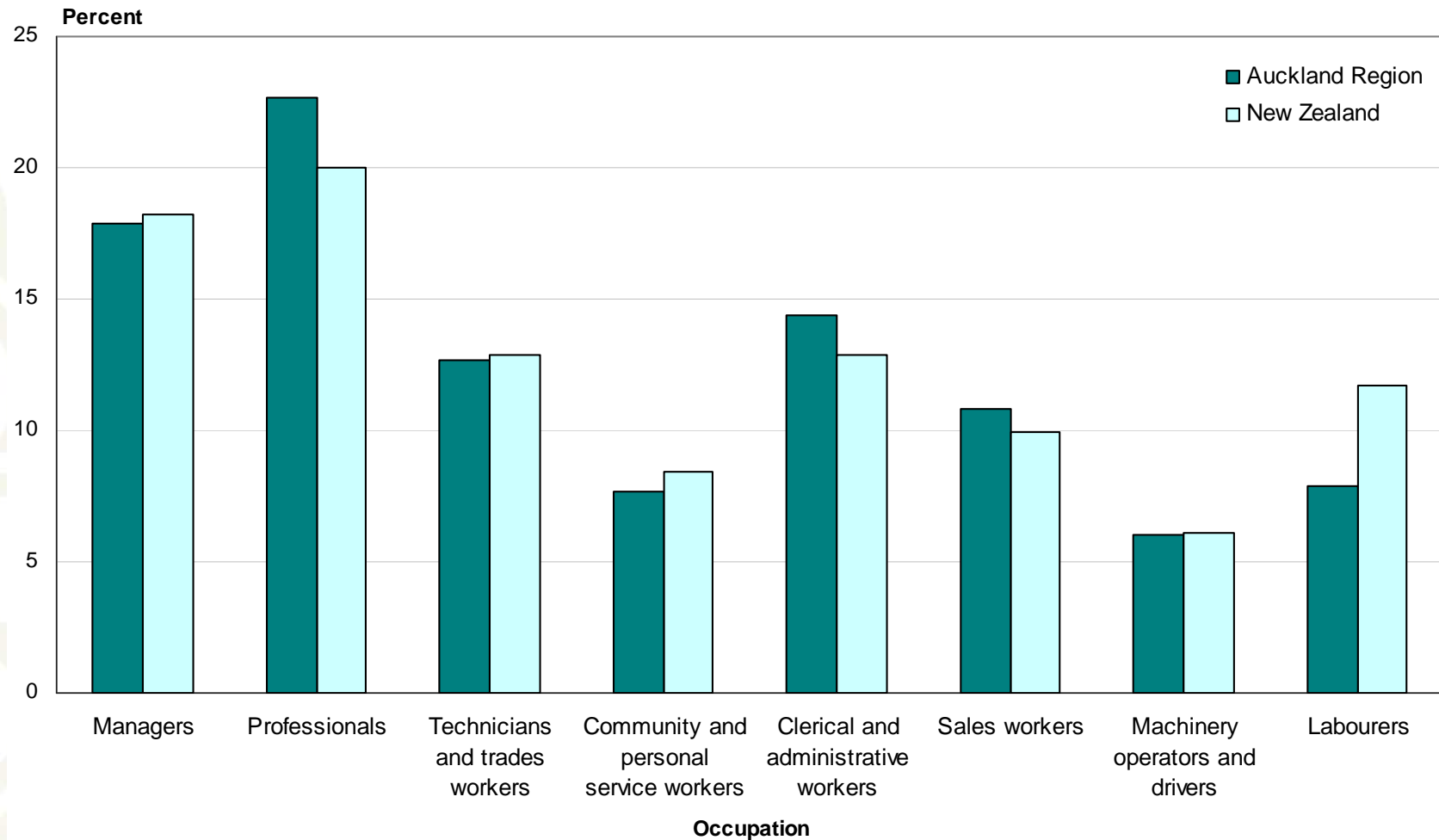
Religious Affiliation (percent)

Auckland Region and New Zealand, 2006 Census

| | Region | NZ |
|---|--------|------|
| Christian (not including Māori Christian) | 56.2 | 58.0 |
| No Religion | 34.5 | 37.1 |
| Māori Christian | 1.3 | 1.9 |
| Hindu | 4.0 | 1.8 |
| Buddhist | 2.6 | 1.5 |
| Islam/Muslim | 2.1 | 1.0 |
| Other Religions | 1.0 | 0.7 |
| Spiritualism and New Age Religions | 0.5 | 0.6 |
| Judaism/Jewish | 0.3 | 0.2 |

Occupation (ANZSCO)

Auckland Region and New Zealand, 2006 Census



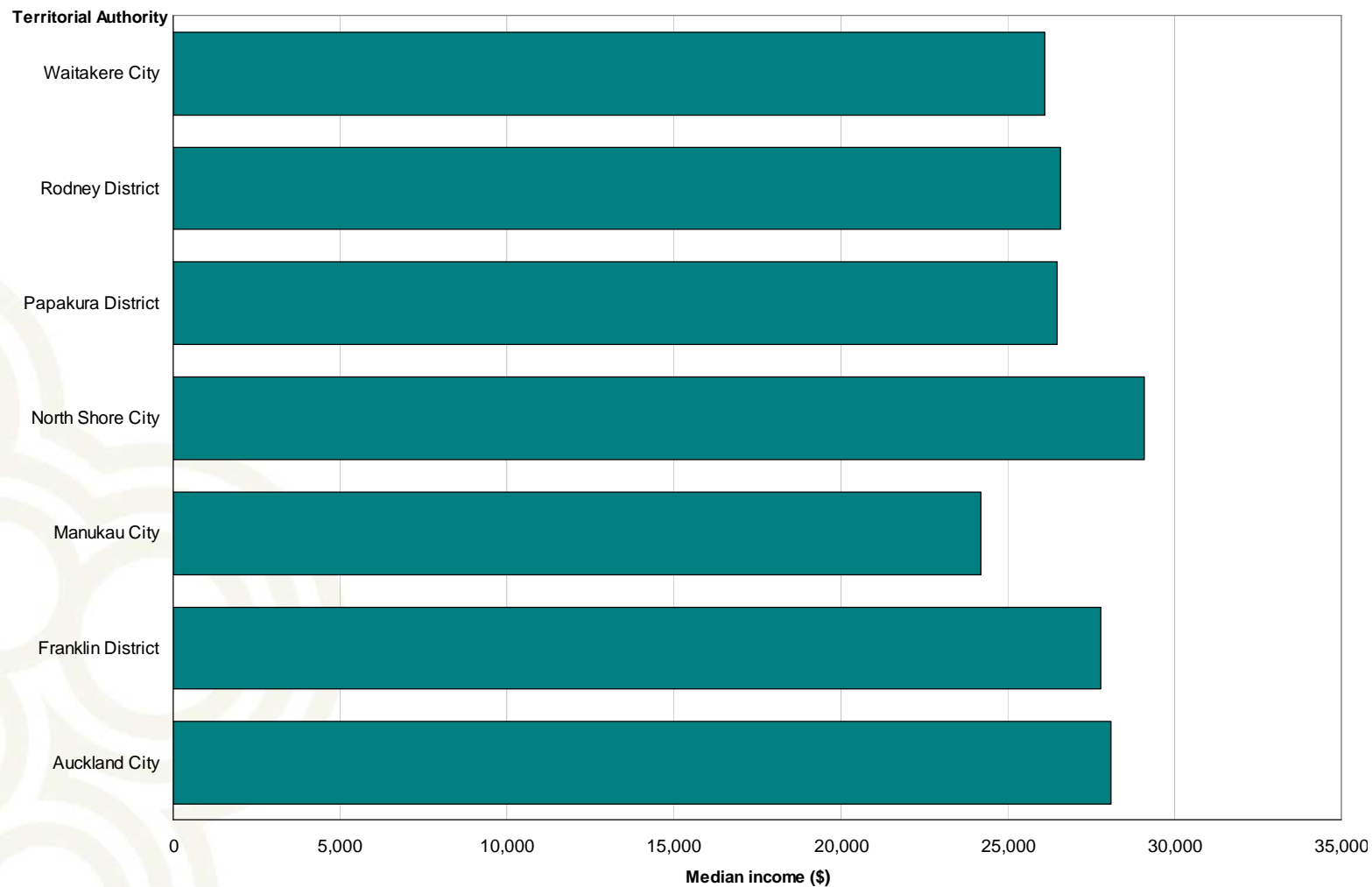
Unpaid Activities

Auckland Region and New Zealand, 2006 Census

| | Region | NZ |
|---|--------|------|
| Helping someone who is ill or has a disability who does not live in own household | 7.8 | 9.1 |
| Household work for own household | 84.9 | 86.1 |
| Looking after a child who does not live in own household | 14.0 | 16.2 |
| Looking after a child who is a member of own household | 32.1 | 31.6 |
| Looking after a member of own household who is ill or has a disability | 7.3 | 7.8 |
| No activities | 12.4 | 11.3 |
| Other helping or voluntary work | 12.7 | 15.4 |

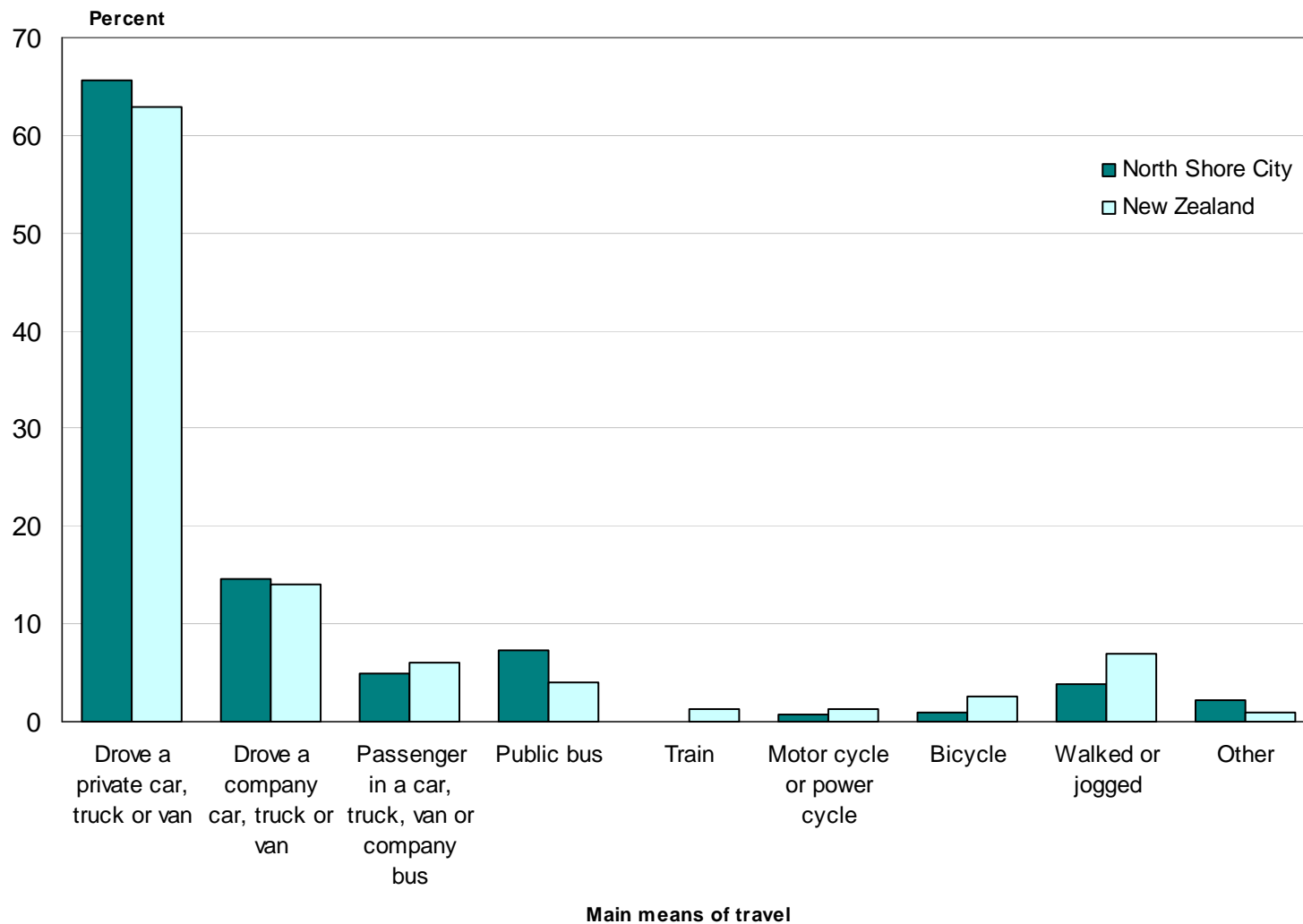
Median Personal Income

Territorial Authorities in Auckland Region, 2006 Census



Main Means of Travel to Work

North Shore City and New Zealand, 2006 Census



Private occupied dwellings

New Zealand

1,471,746

- 8.2 percent increase from 2001

Auckland Region

437,985

- 11.4 percent increase from 2001

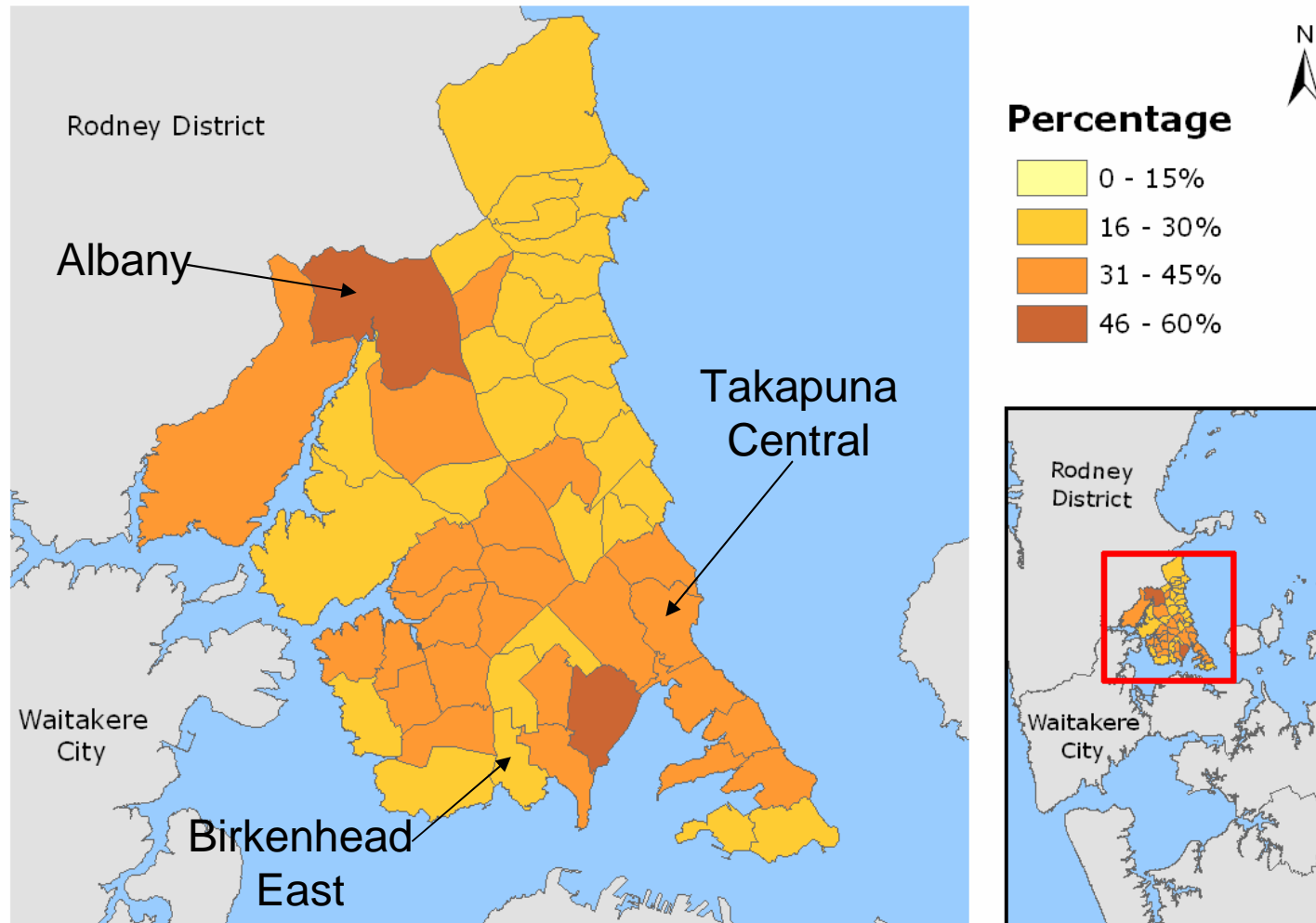
North Shore City

72,657

- 9.3 percent increase from 2001

Dwellings Not Owned by Usual Resident(s)

North Shore City (Area Unit), 2006 Census



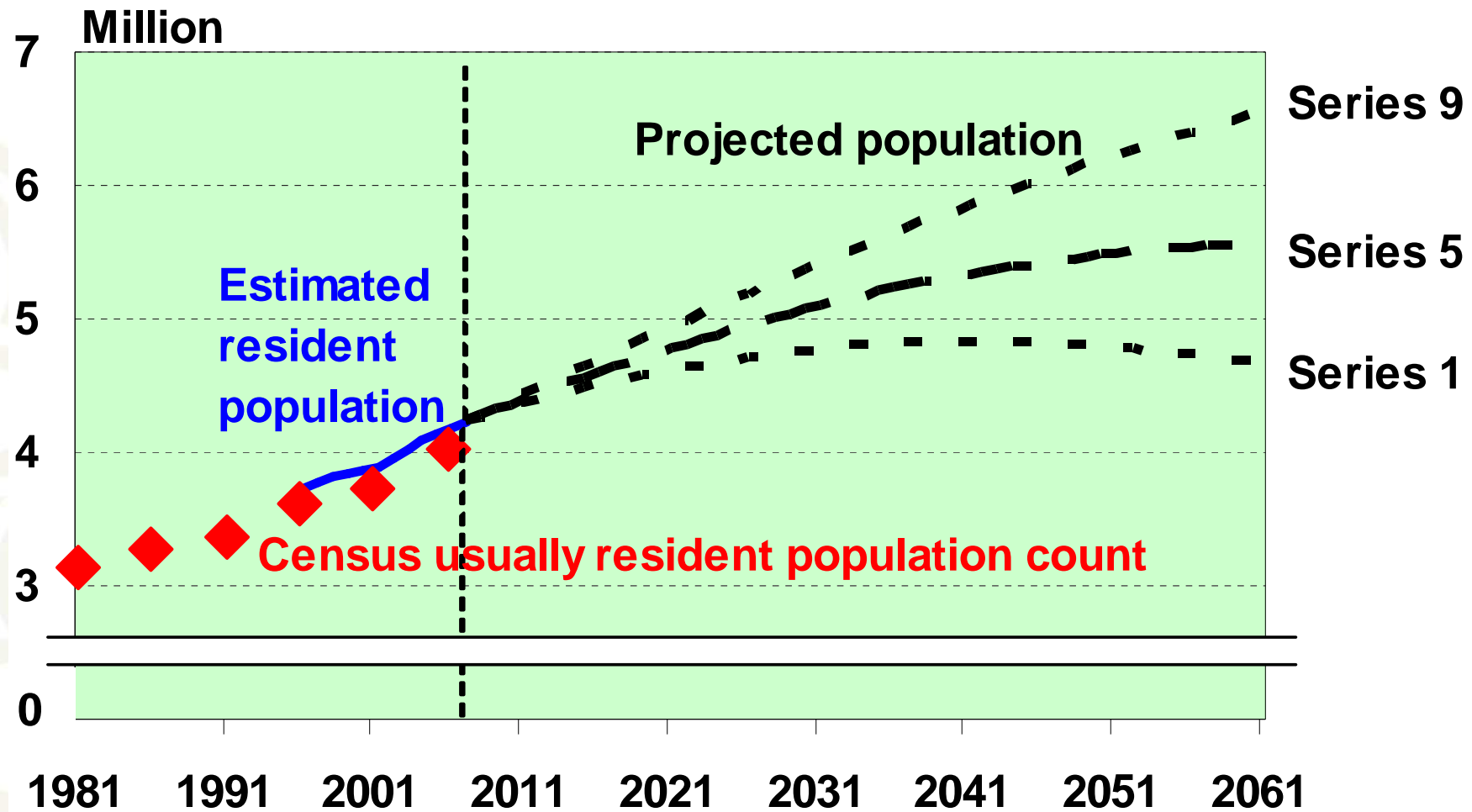
Population estimates and projections

A decorative graphic in the bottom-left corner consisting of several overlapping, light-colored circles of varying sizes, creating a pattern that resembles a stylized map or a cluster of data points.

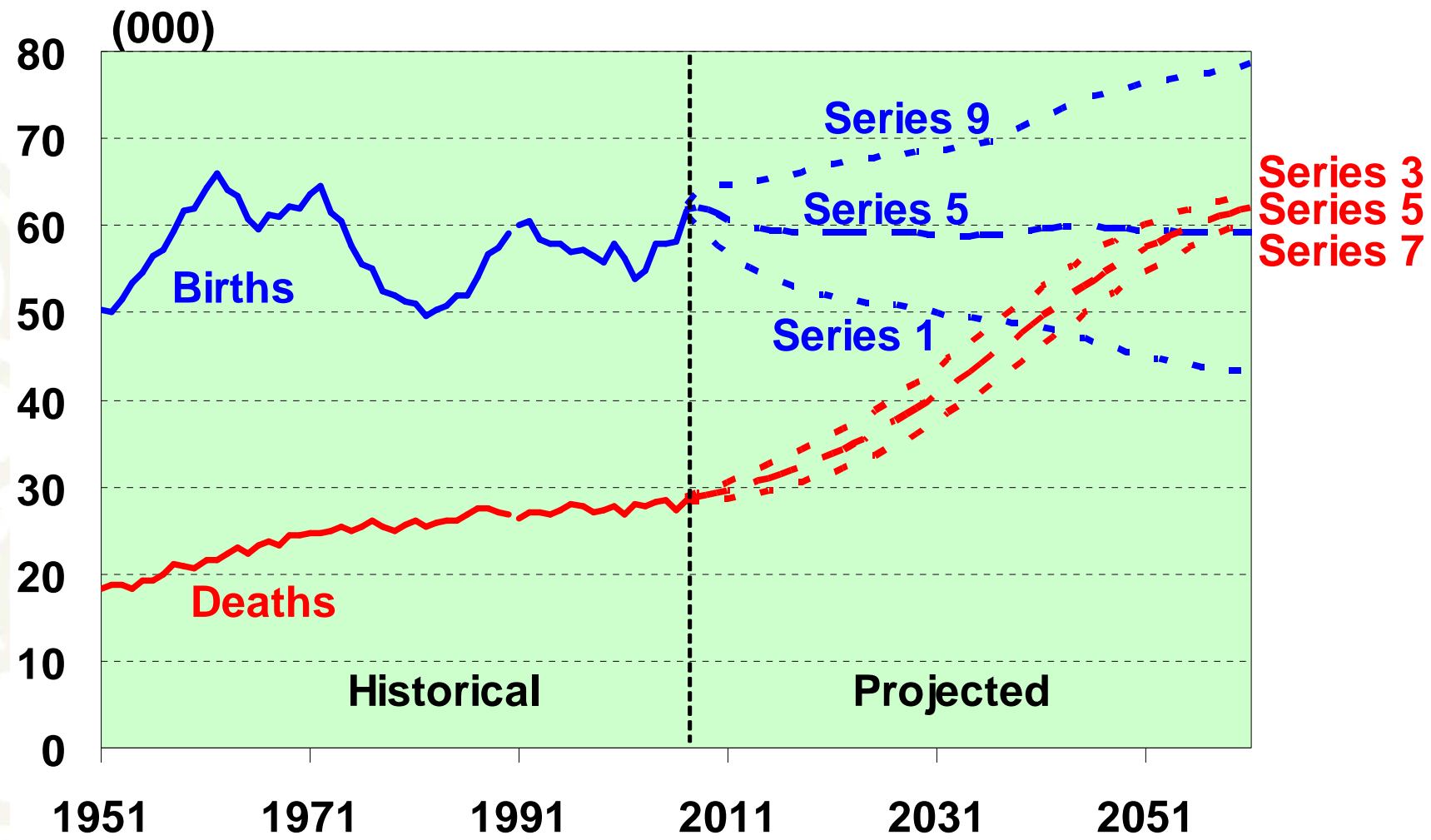
Estimated resident population

- The best measure of who lives in an area
- A census base (excluding overseas visitors) adjusted for:
 - o Net census undercount
 - o Residents temporarily overseas
 - o Births, deaths and net migration to 30 June 2006
- Limited variables (age, sex, ethnicity)
- Provides base for population projections

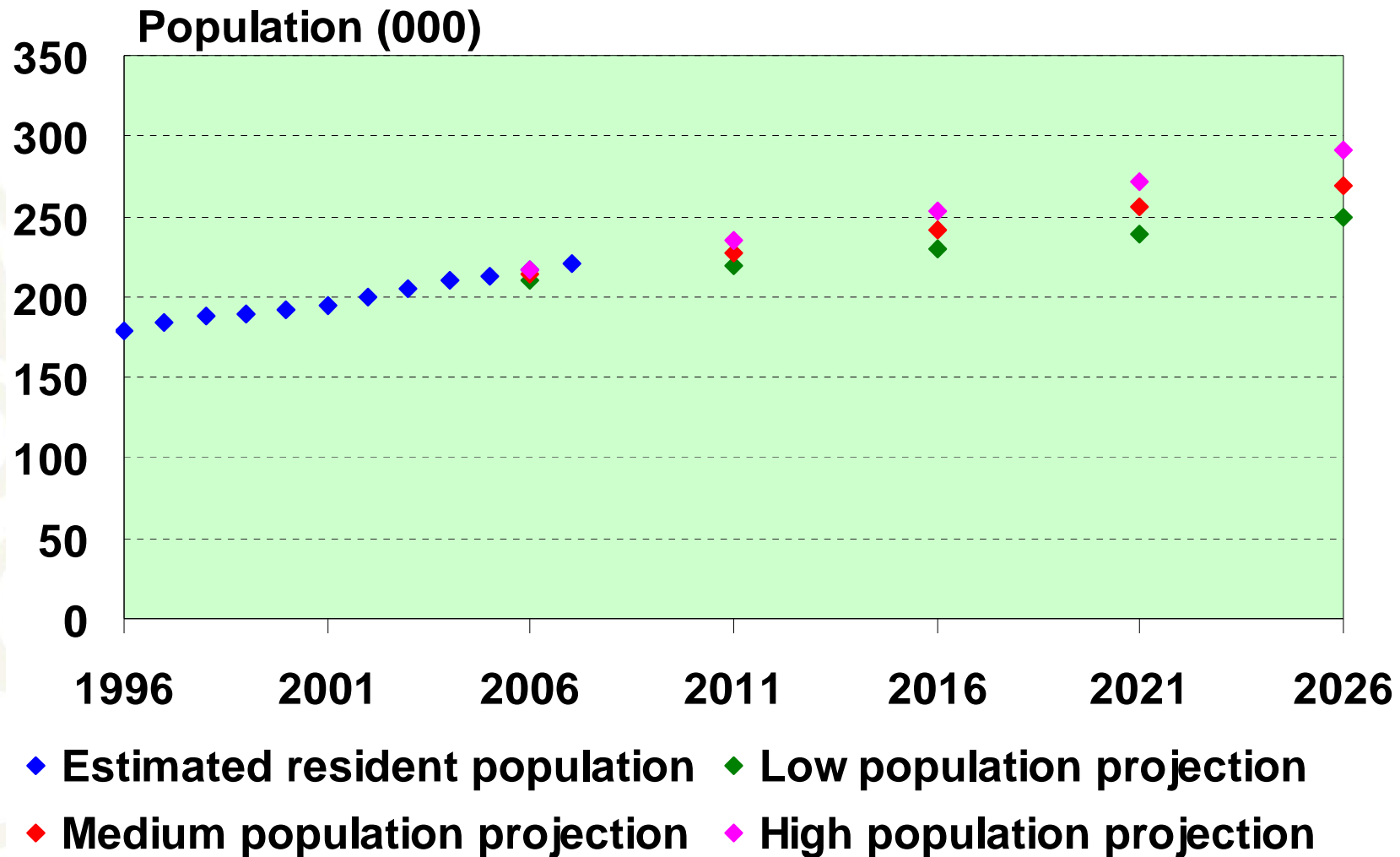
New Zealand population



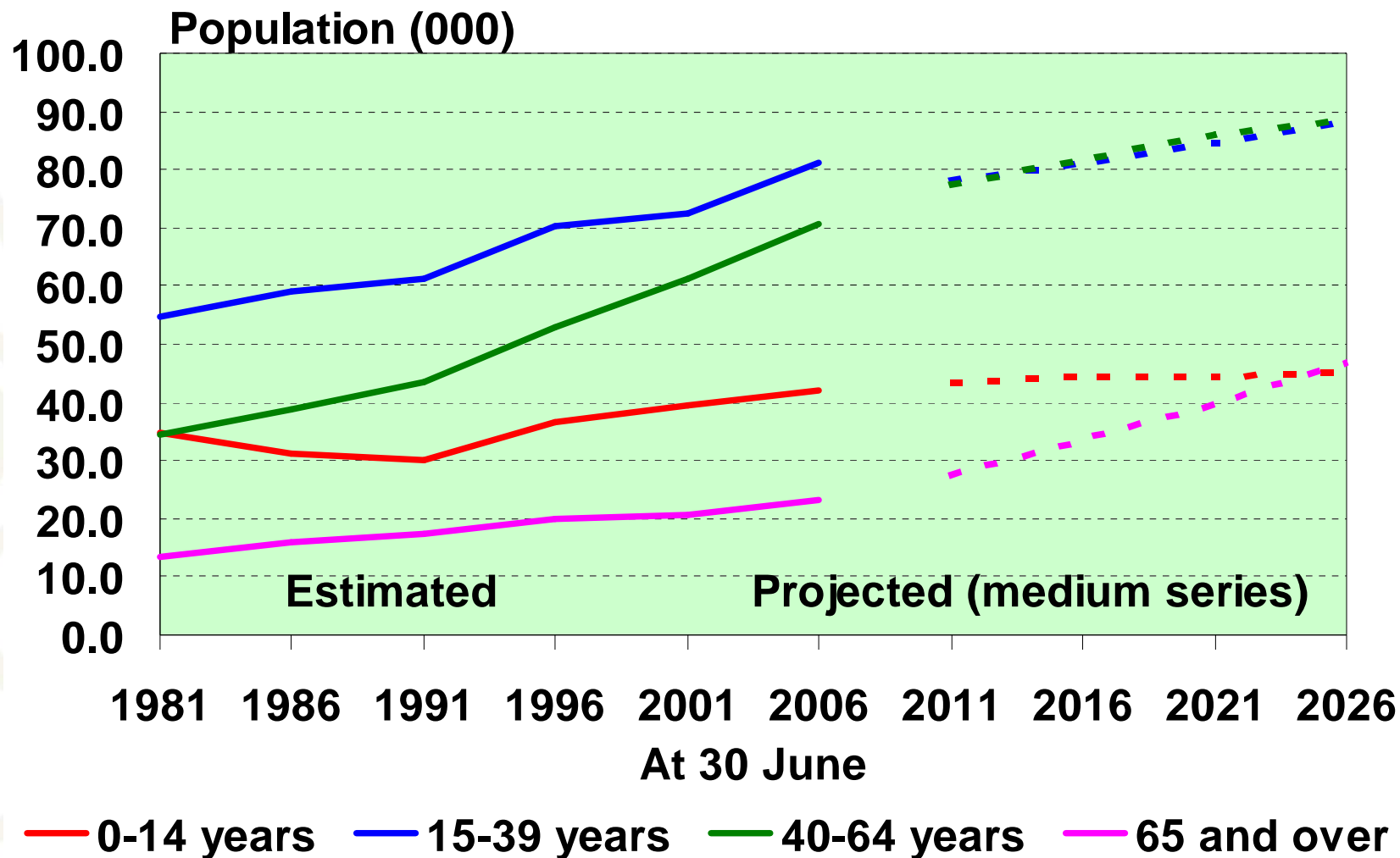
New Zealand shrinking natural increase



Population of North Shore City



North Shore City: growth in older ages



Key release dates: 2006-base population estimates

21 August 2007: first 2006-base population estimates

June 2006 data on Table Builder

- o National and subnational estimates June 2006
- o Area unit estimates June 2006 (NEW)
- o National estimates June 2007 Quarter

23 October 2007

- o Subnational estimates June 2007

December 2007

- o Area unit estimates June 2007 (NEW)

Population Projections – release dates

- National population projections: 24 October 2007
- Subnational population projections: 3 December 2007
- National ethnic projections: 2 April 2008
- National labour force projections: 6 May 2008
- Area unit population projections: mid 2008
- Family and household projections: 2008/09