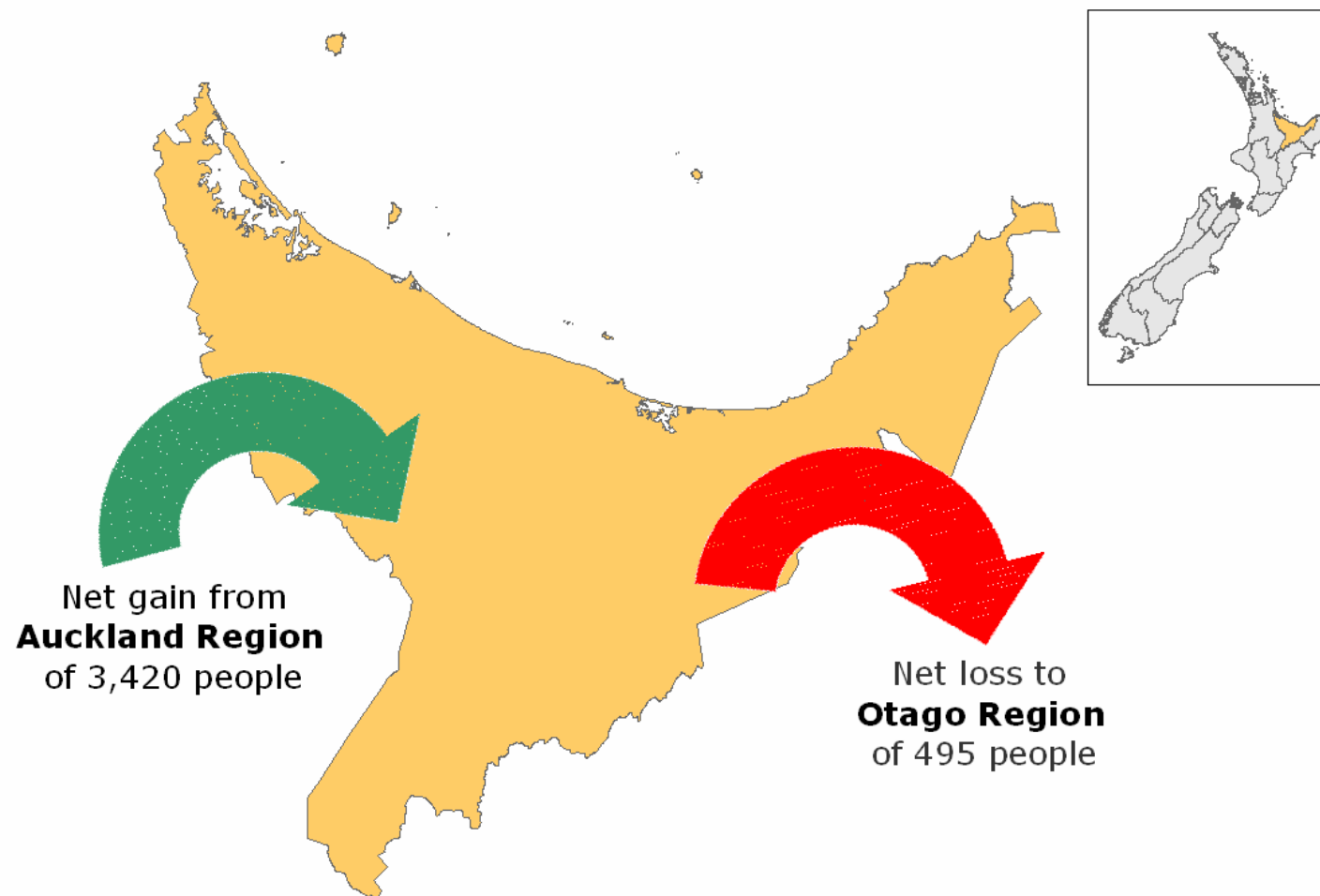


What we look like locally



Net Migration for Bay of Plenty Region

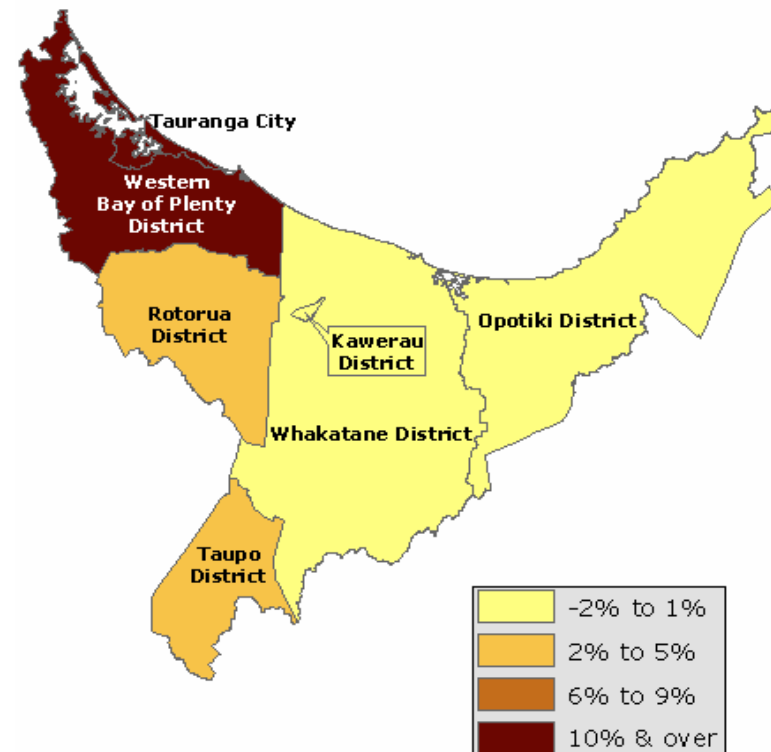


Usually Resident Population

Percentage change from 2001

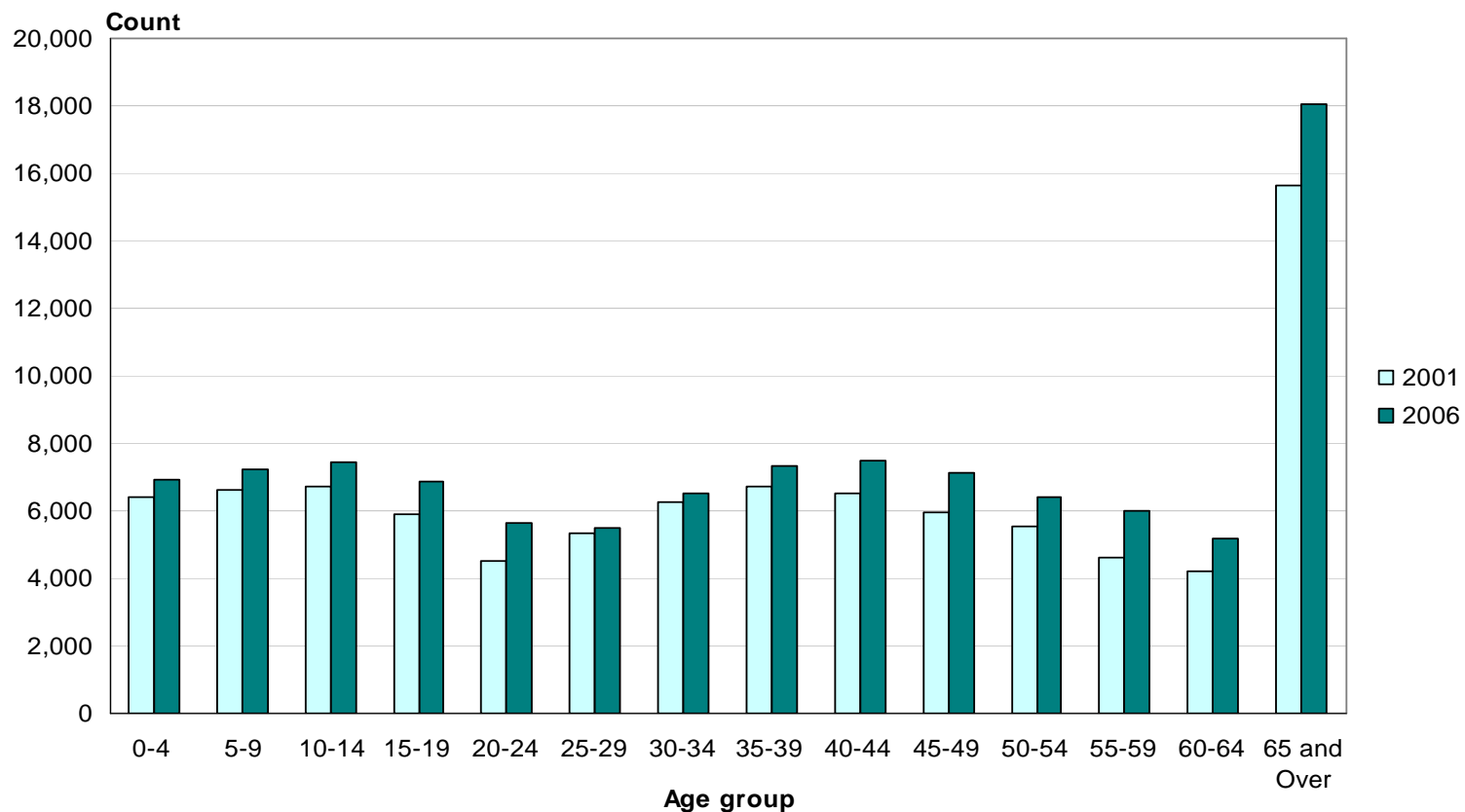
o Bay of Plenty Region
257,379

o Tauranga City
103,635



Age (5 years)

Tauranga City, 2001 and 2006 Censuses



Median age for Tauranga City 38.1 years

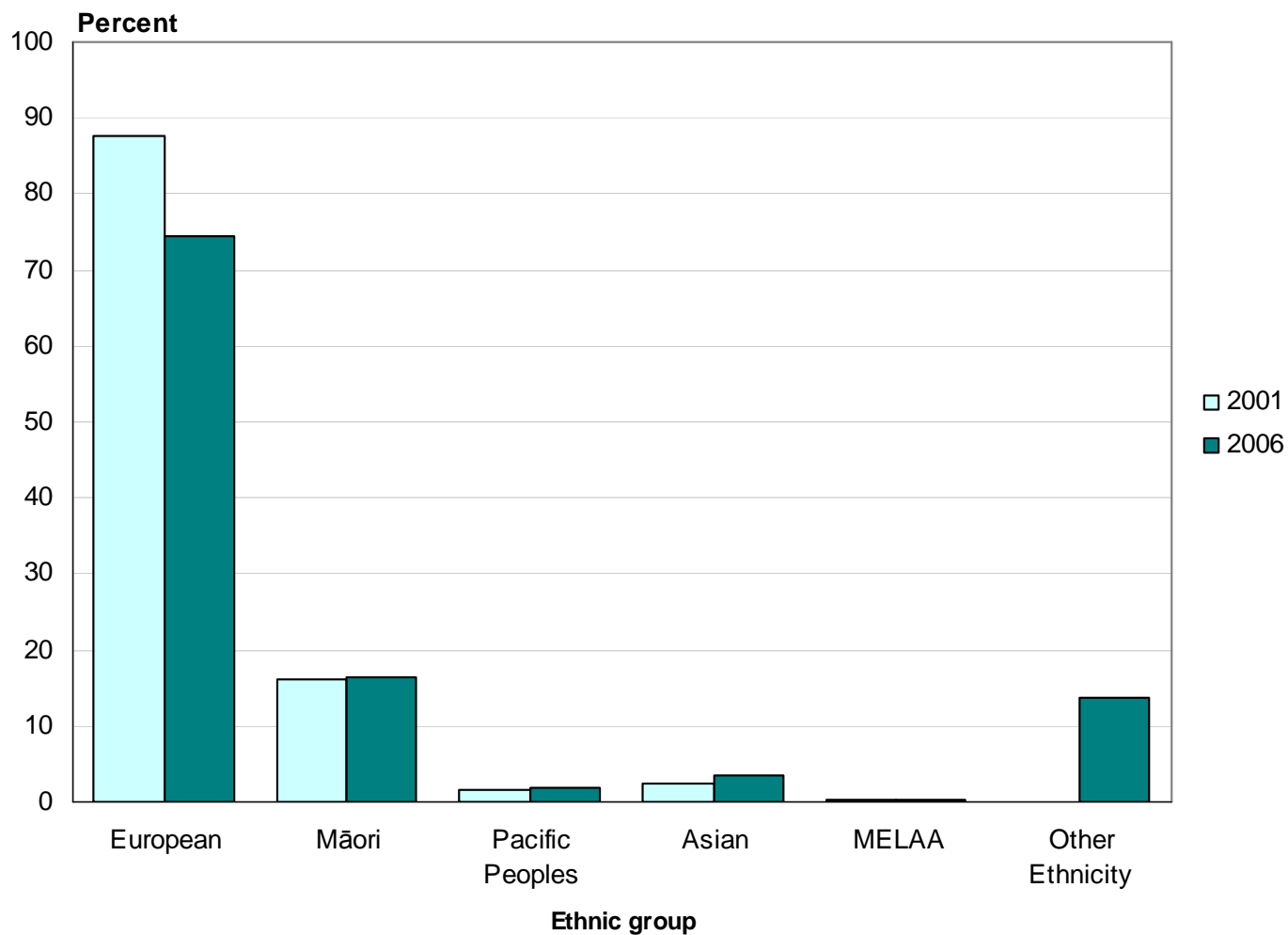
Who needs a holiday programme?

- Number of children under 15 years
 - o Bay of Plenty Region 59,271
 - o Tauranga City 21,582

	0 - 4 Years	5 - 9 Years	10 - 14 Years	Total
Hairini	387	402	399	1,185
Brookfield	372	375	414	1,161
Matua	228	357	381	963
Arataki	312	291	309	909
Welcome Bay West	285	327	291	903
Omanu	309	279	297	885
Bellevue	225	246	369	843

Ethnic Group

Tauranga City, 2001 and 2006 Censuses



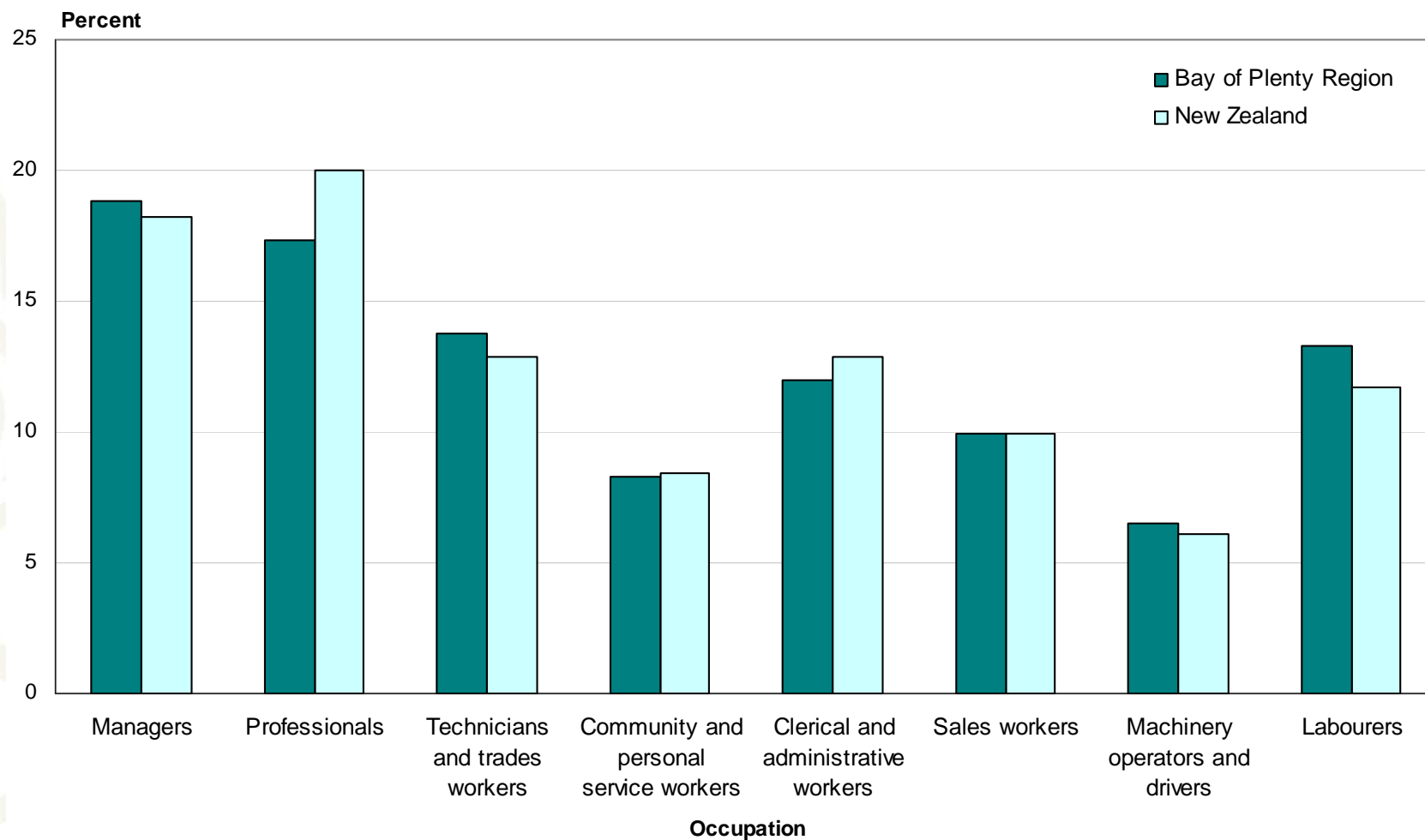
Religious Affiliation (percent)

Bay of Plenty Region and New Zealand, 2006 Census

	Region	NZ
Christian (not including Māori Christian)	57.6	58.0
No Religion	37.7	37.1
Māori Christian	5.1	1.9
Hindu	0.7	1.8
Buddhist	0.6	1.5
Islam/Muslim	0.3	1.0
Other Religions	1.0	0.7
Spiritualism and New Age Religions	0.5	0.6
Judaism/Jewish	0.1	0.2

Occupation (ANZSCO)

Bay of Plenty Region and New Zealand, 2006 Census



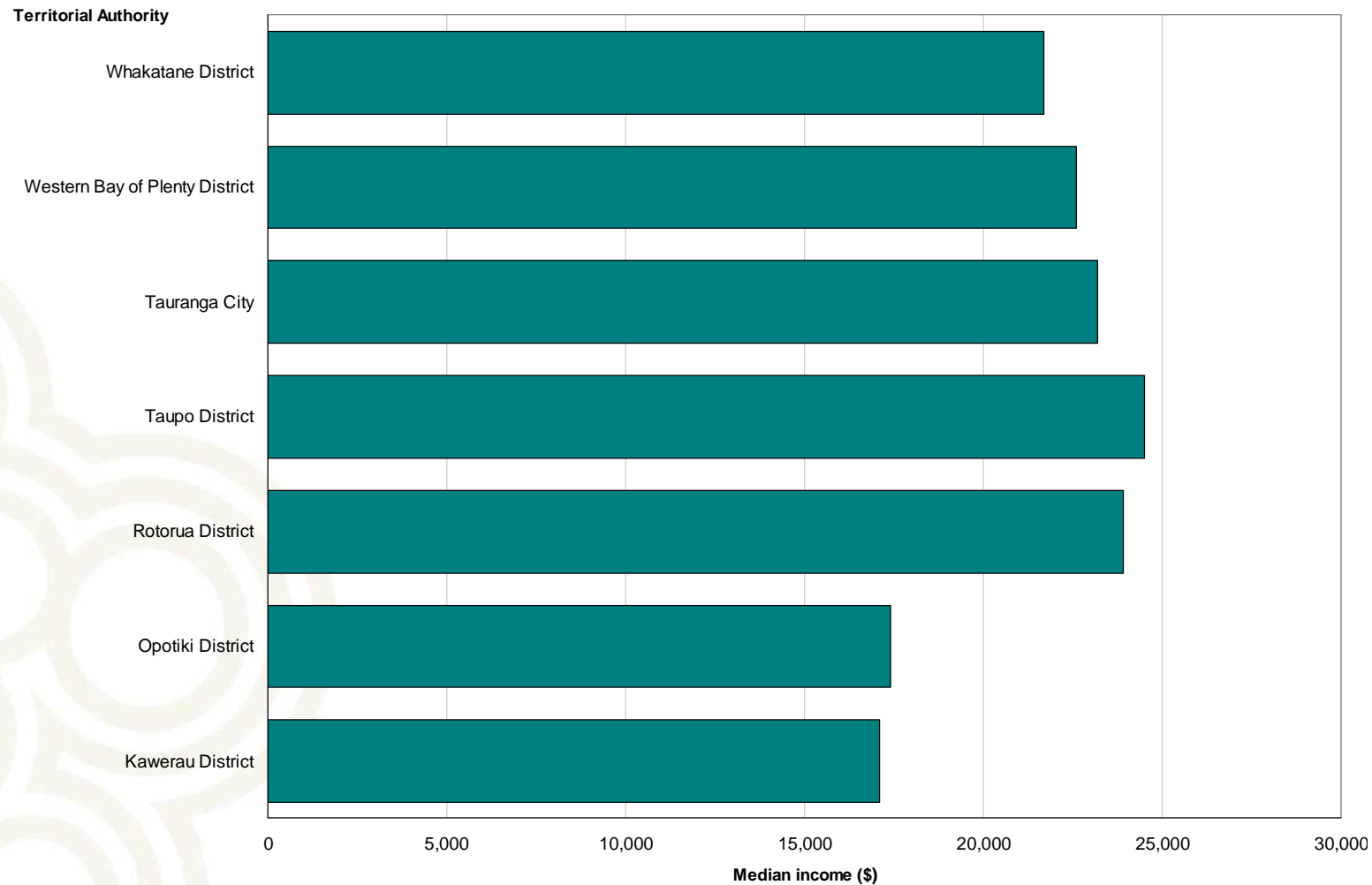
Unpaid Activities

Bay of Plenty Region and New Zealand, 2006 Census

	Region	NZ
Helping someone who is ill or has a disability who does not live in own household	10.2	9.1
Household work for own household	86.7	86.1
Looking after a child who does not live in own household	17.9	16.2
Looking after a child who is a member of own household	33.0	31.6
Looking after a member of own household who is ill or has a disability	9.0	7.8
No activities	10.7	11.3
Other helping or voluntary work	16.9	15.4

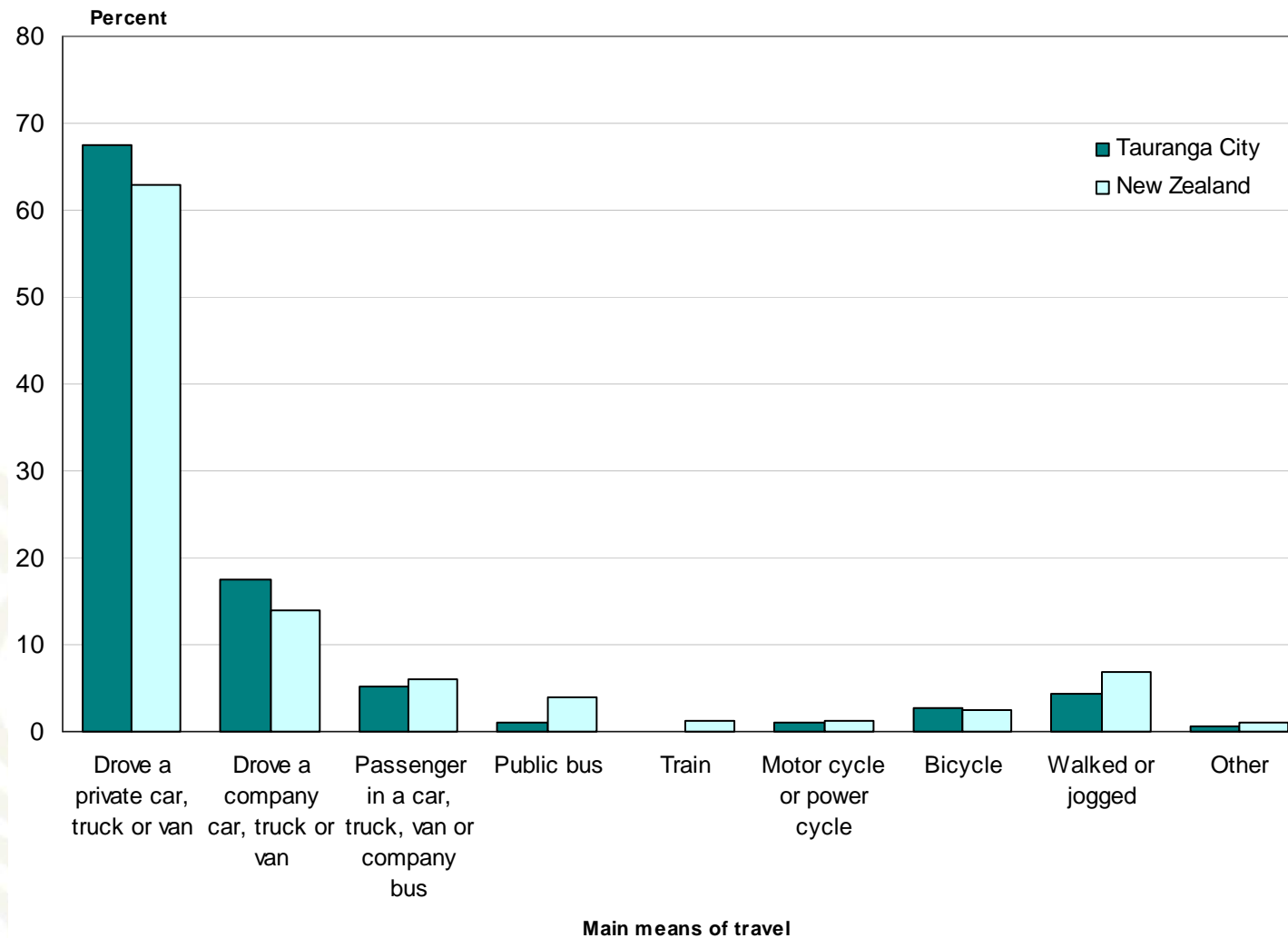
Median Personal Income

Territorial Authorities in Bay of Plenty Region, 2006 Census



Main Means of Travel to Work

Tauranga City and New Zealand, 2006 Census



Private occupied dwellings

New Zealand 1,471,746

- 8.2 percent increase from 2001

Bay of Plenty Region 96,165

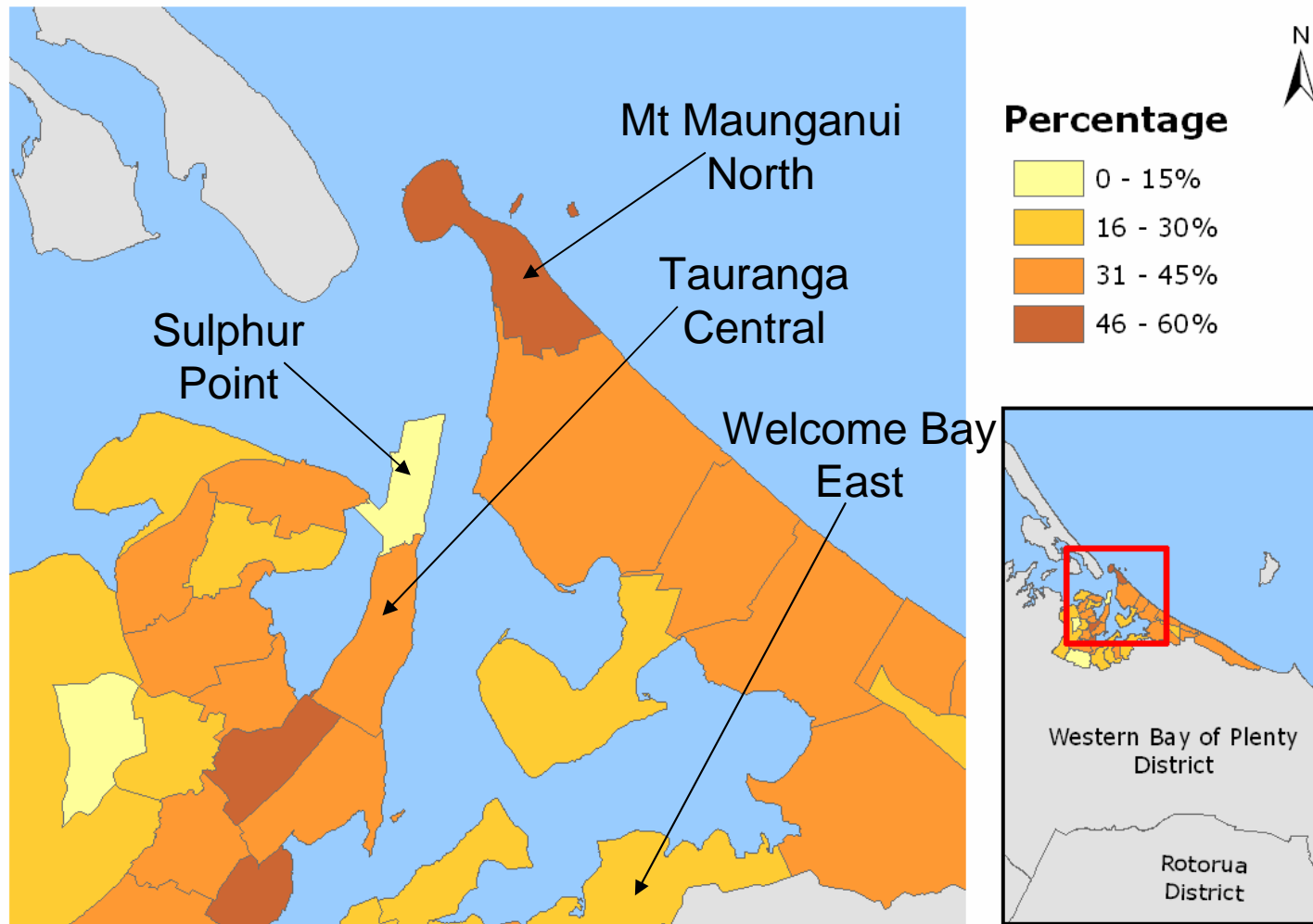
- 9.4 percent increase from 2001

Tauranga City 40,494

- 14.7 percent increase from 2001

Dwellings Not Owned by Usual Resident(s)

Tauranga City (Area Unit), 2006 Census



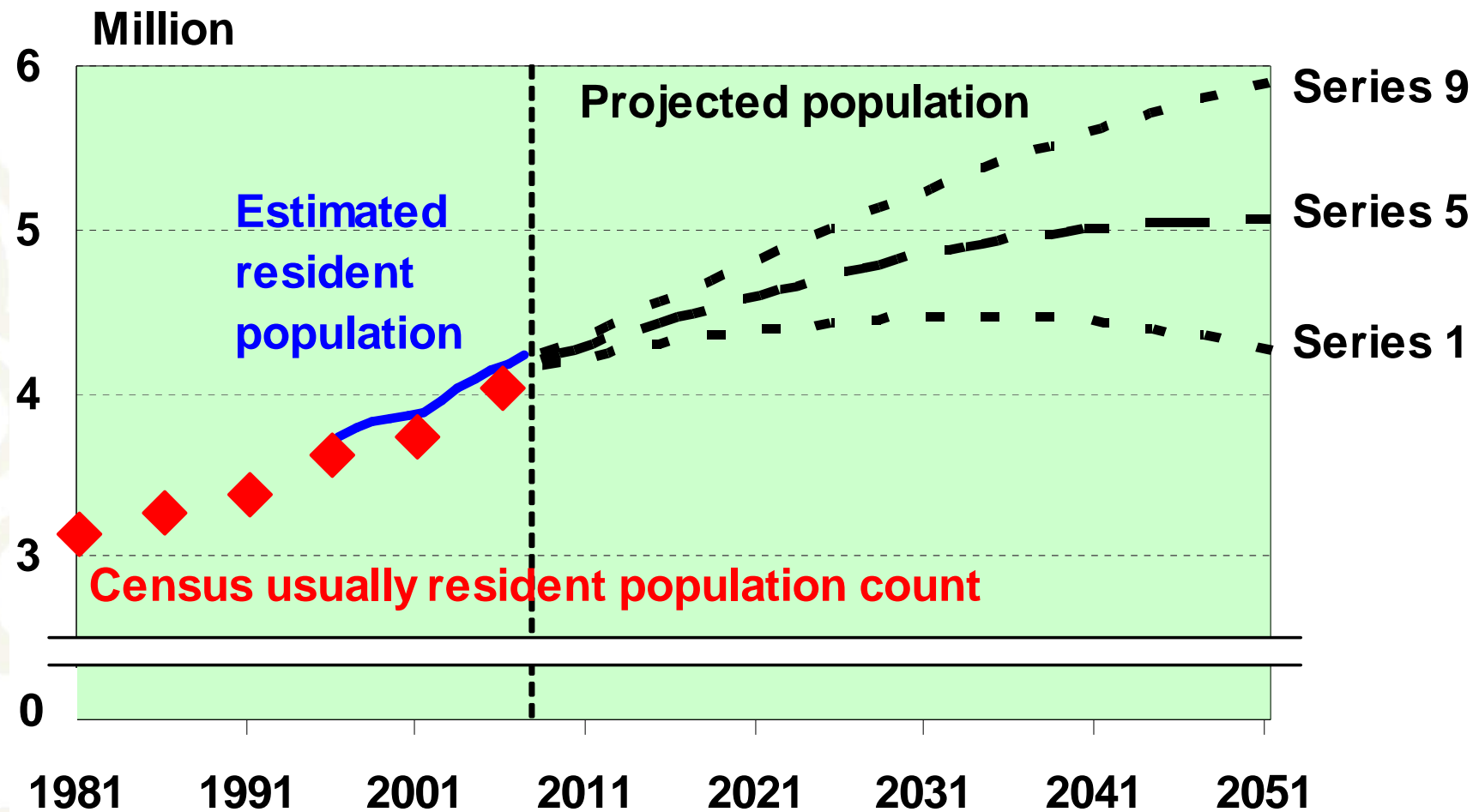
Population estimates and projections

A decorative graphic in the bottom-left corner consisting of several overlapping, light-colored circles of varying sizes, creating a pattern that resembles a stylized map or a cluster of data points.

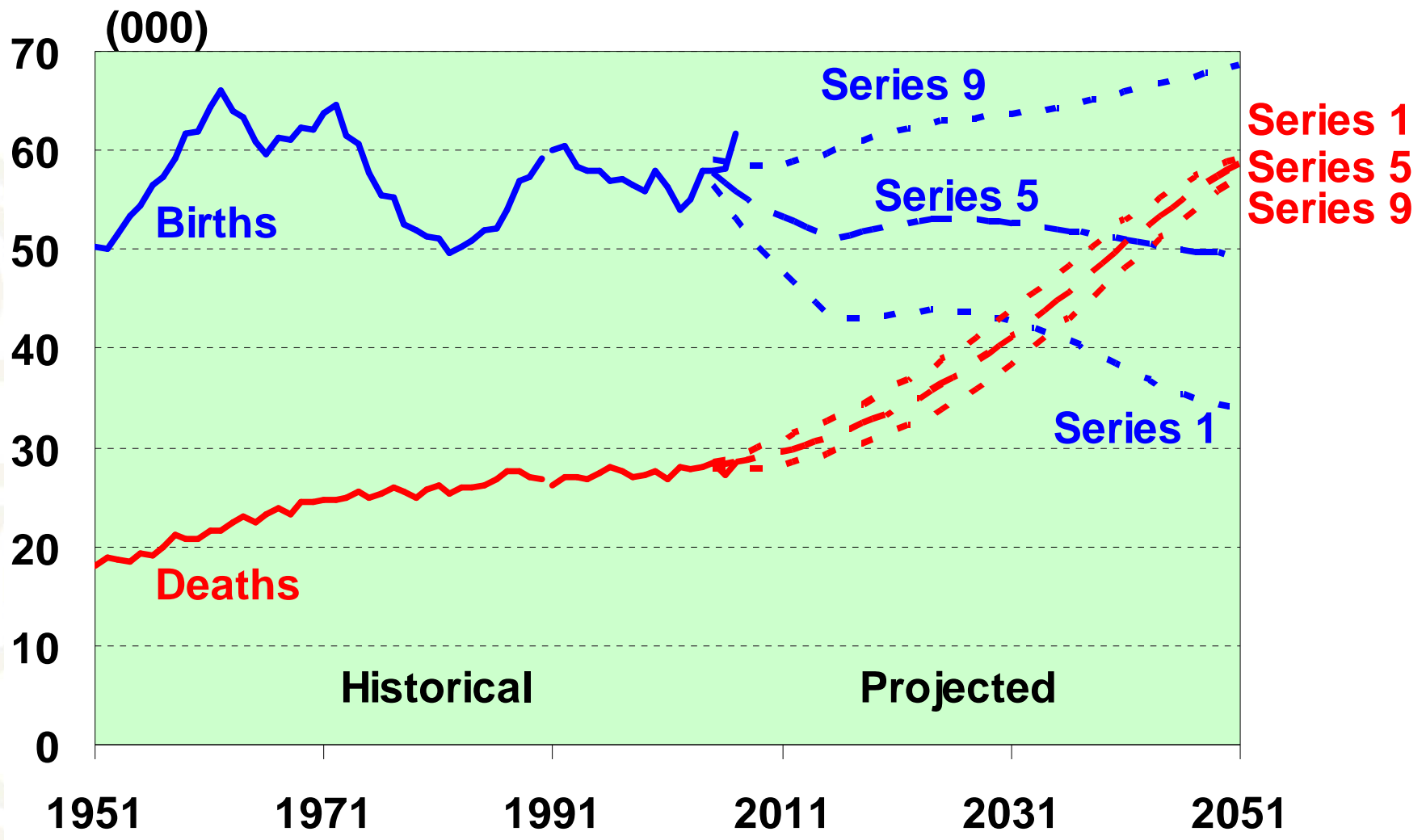
Estimated resident population

- The best measure of who lives in an area
- A census base (excluding overseas visitors) adjusted for:
 - o Net census undercount
 - o Residents temporarily overseas
 - o Births, deaths and net migration to 30 June 2006
- Limited variables (age, sex, ethnicity)
- Provides base for population projections

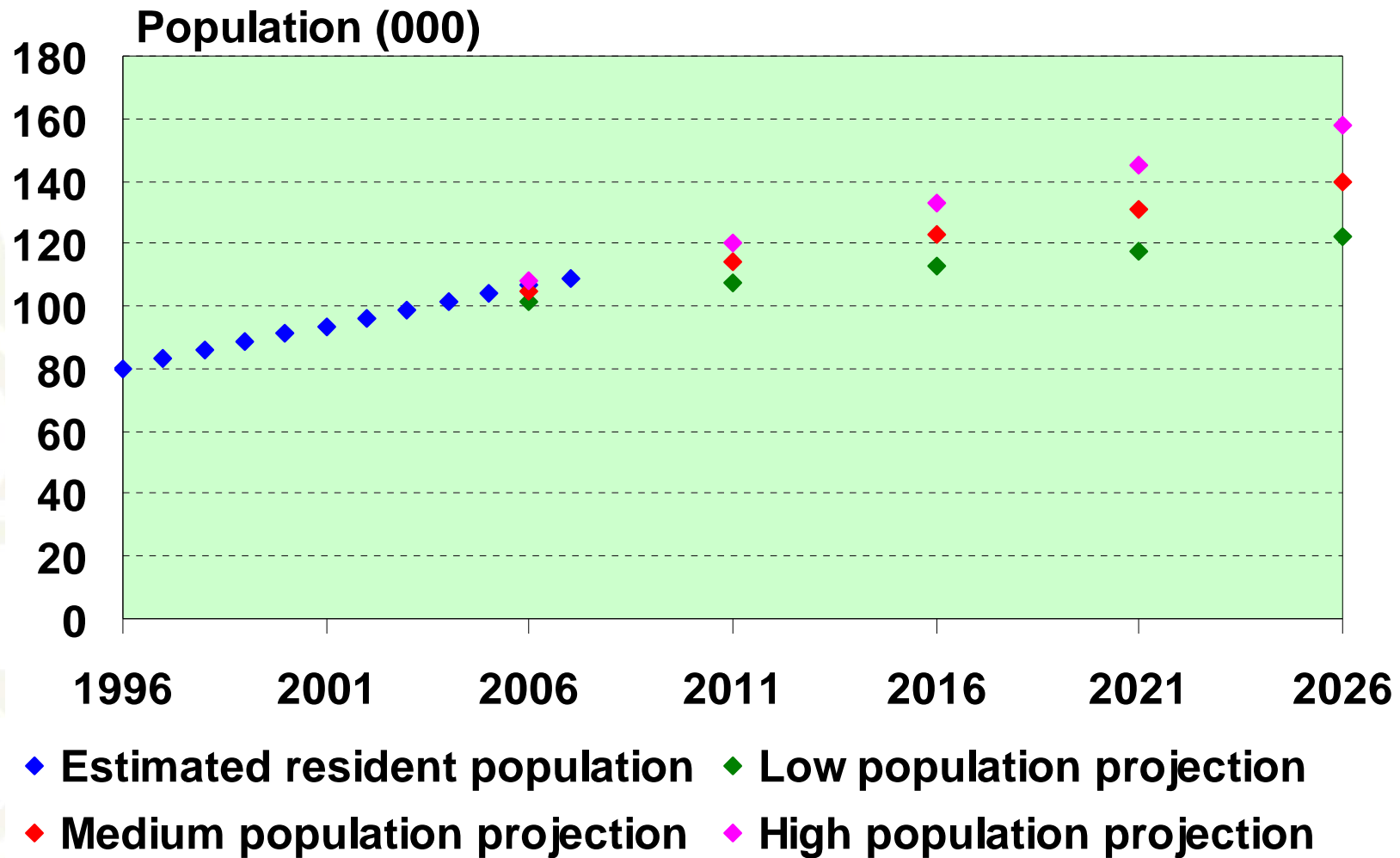
New Zealand population



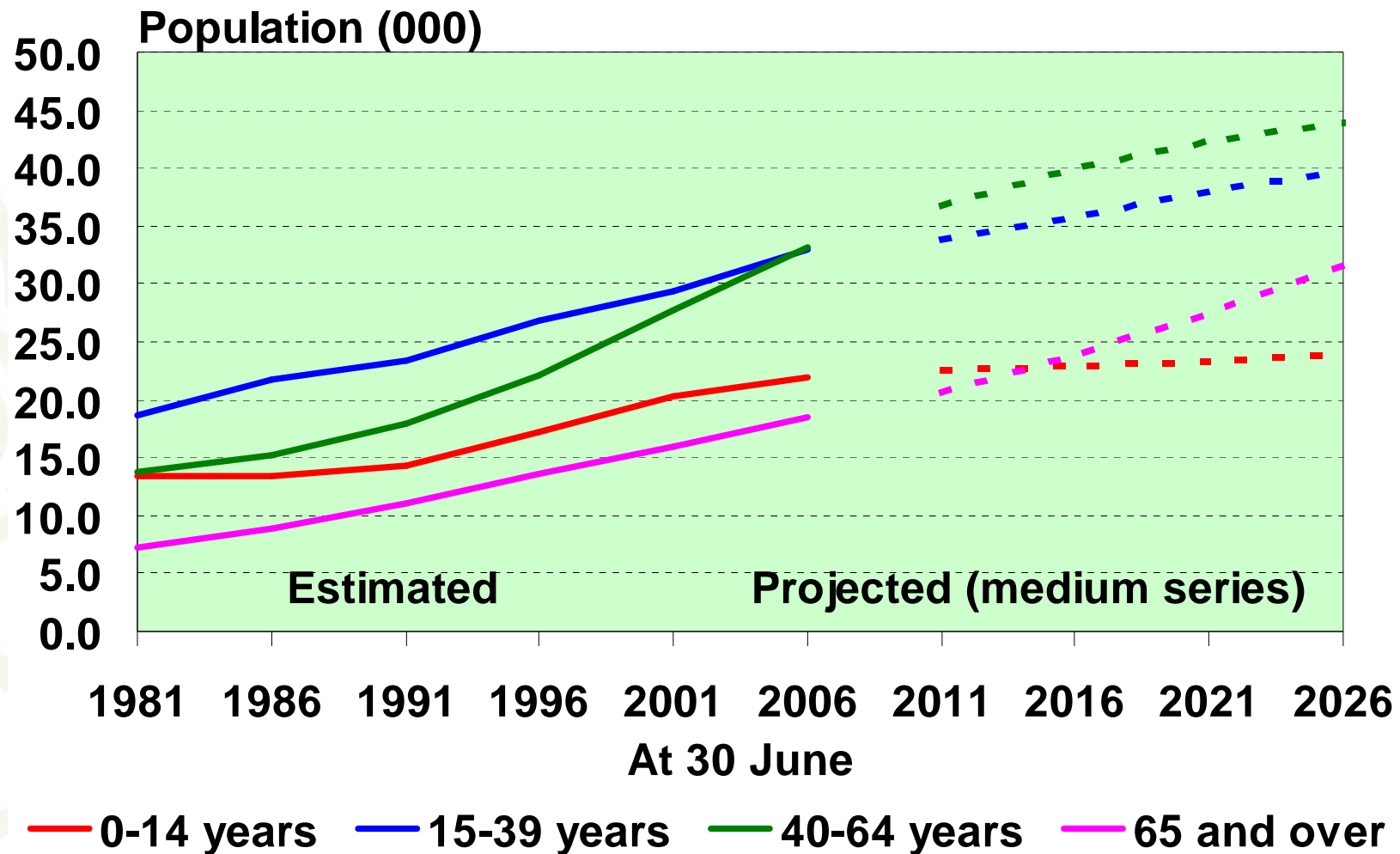
New Zealand shrinking natural increase



Population of Tauranga City



Tauranga City: growth in older ages



Key release dates: 2006-base population estimates

21 August 2007: first 2006-base population estimates

June 2006 data on Table Builder

- o National and subnational estimates June 2006
- o Area unit estimates June 2006 (NEW)
- o National estimates June 2007 Quarter

23 October 2007

- o Subnational estimates June 2007

December 2007

- o Area unit estimates June 2007 (NEW)

Population Projections – release dates

- National population projections: 24 October 2007
- Subnational population projections: 3 December 2007
- National ethnic projections: 2 April 2008
- National labour force projections: 6 May 2008
- Area unit population projections: mid 2008
- Family and household projections: 2008/09