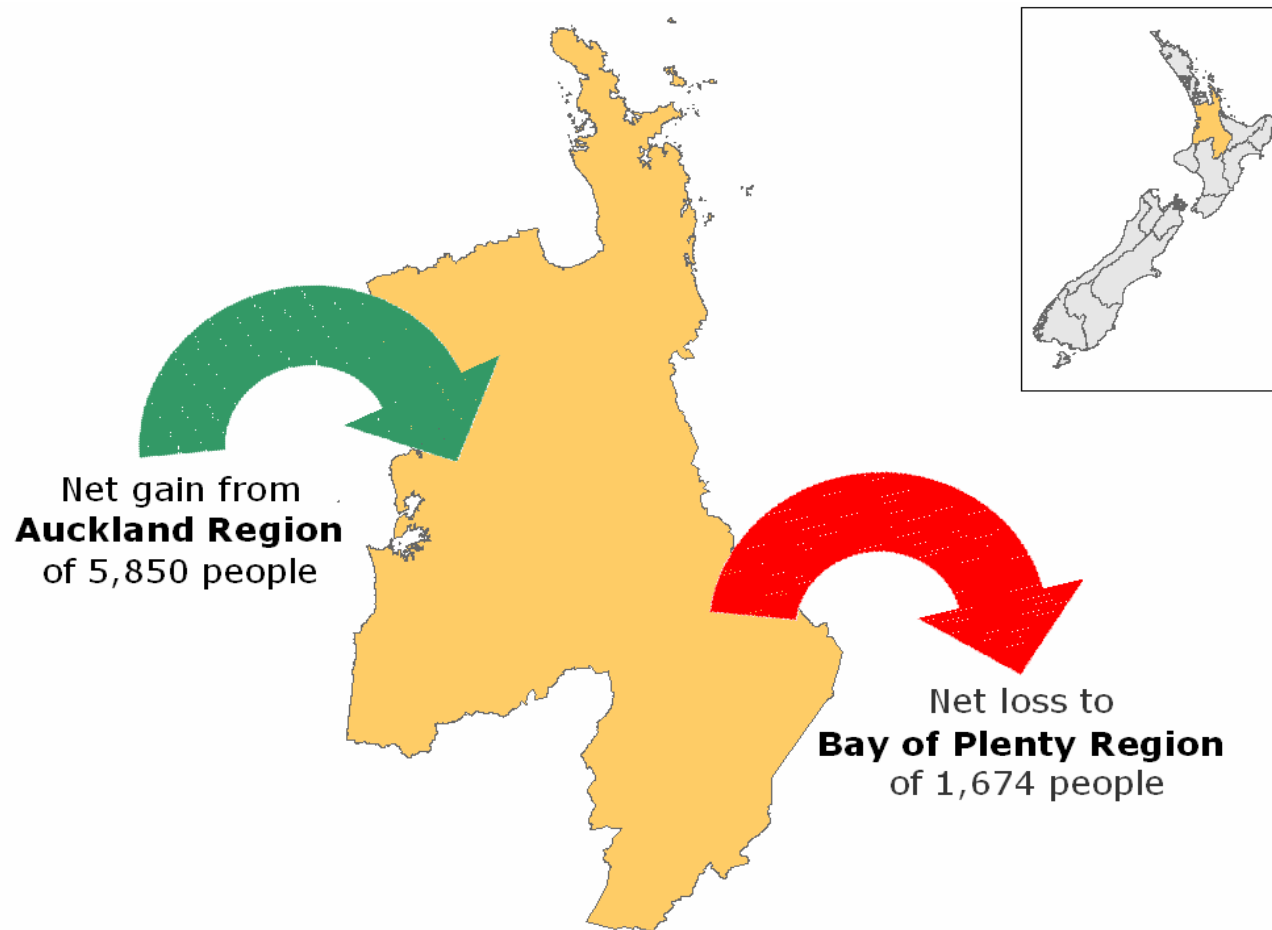


What we look like locally



Net Migration for Waikato Region

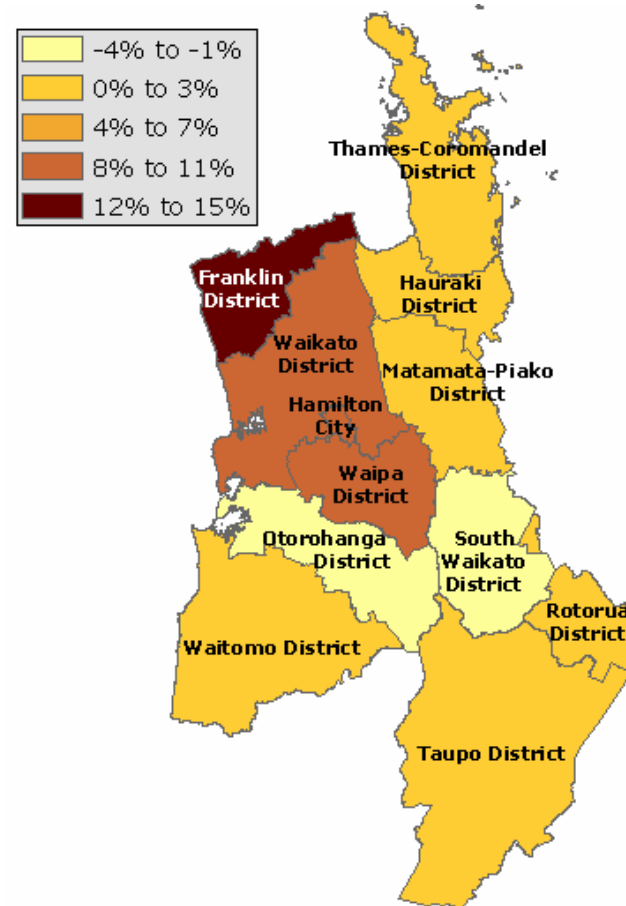


Usually Resident Population

Percentage change from 2001

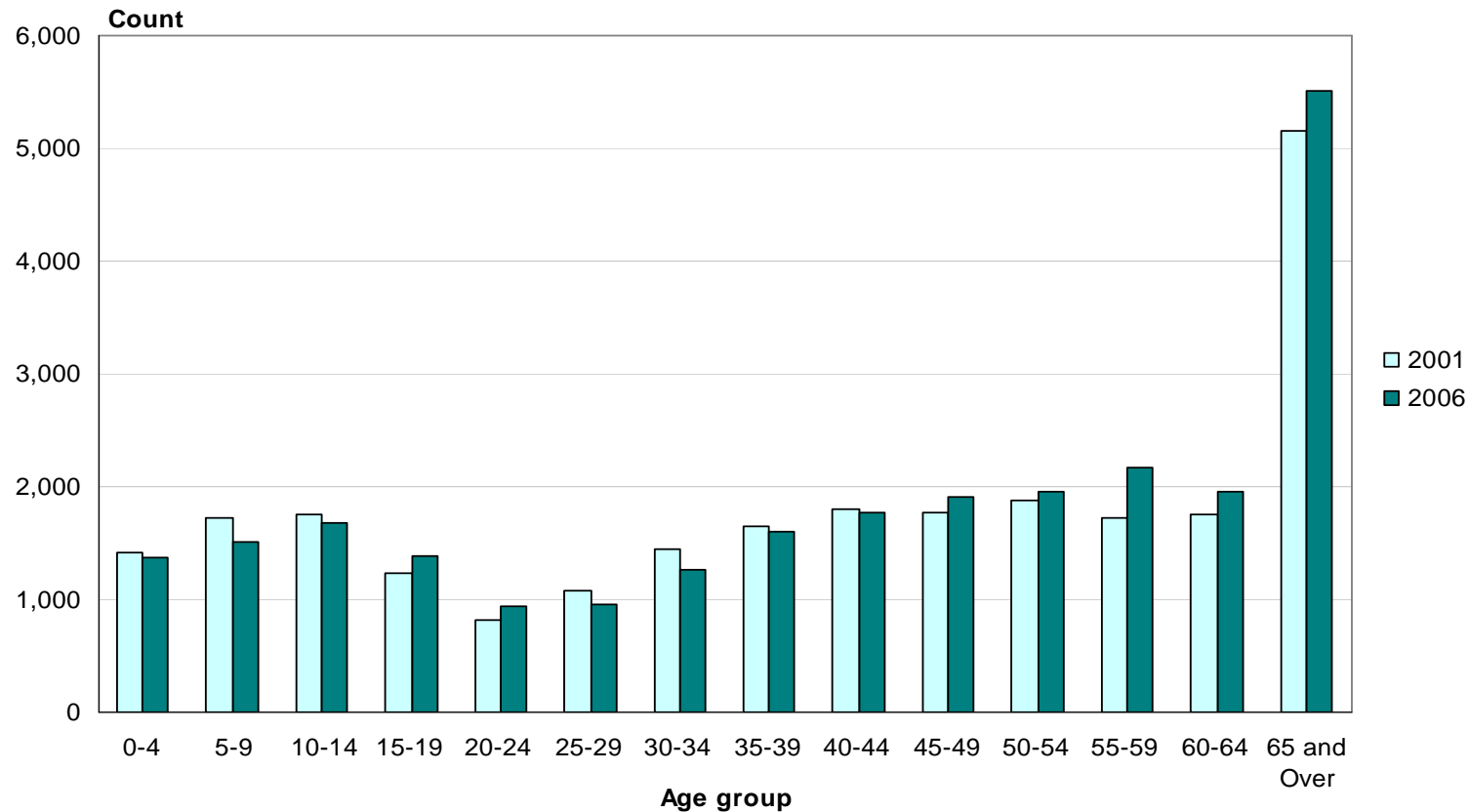
o Waikato Region
382,713

o Thames-Coromandel District
25,941



Age (5 years)

Thames-Coromandel District, 2001 and 2006 Censuses



Median age for Thames-Coromandel District 46.1 years

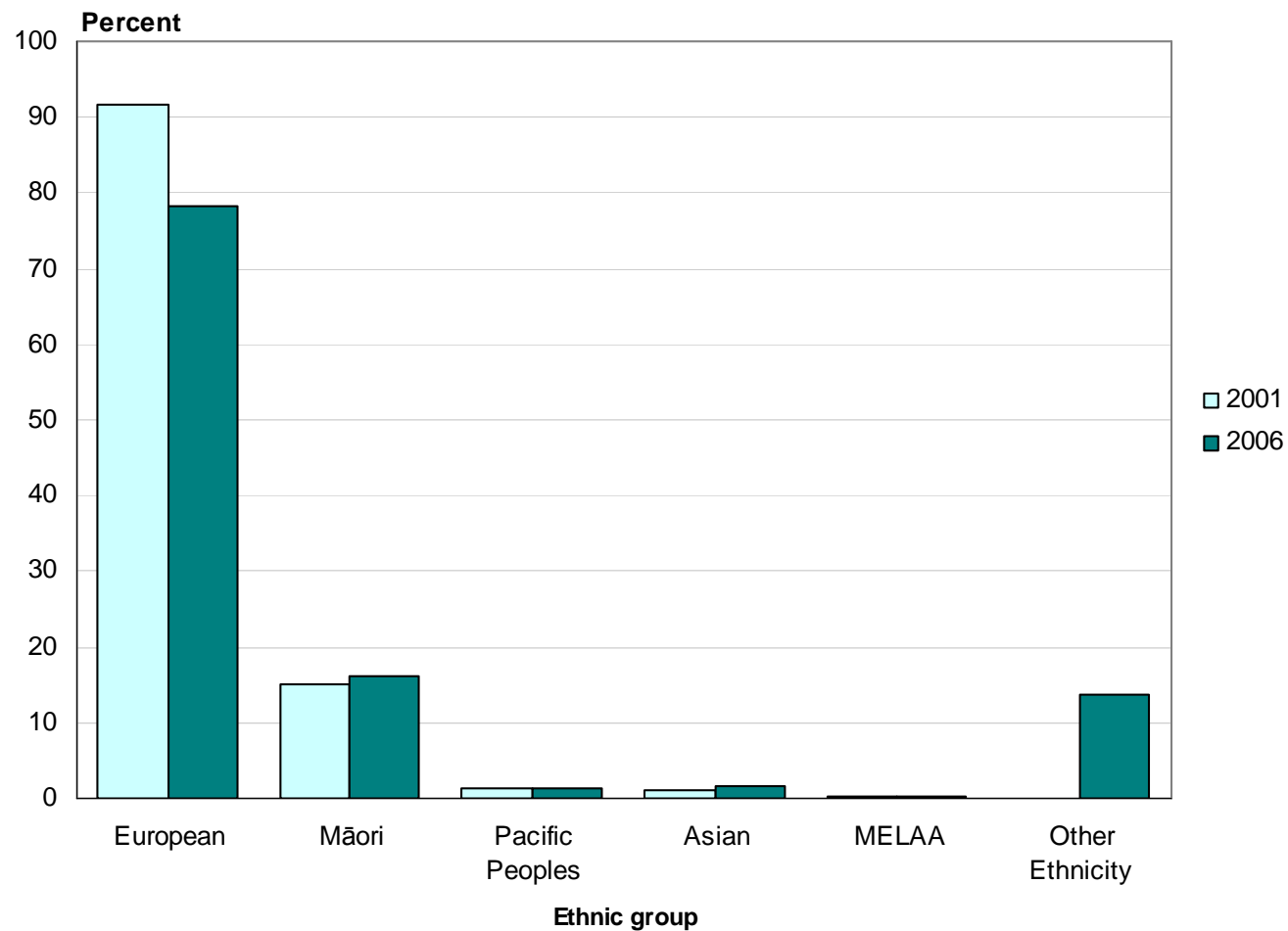
Who needs a holiday programme?

- Number of children under 15 years
 - o Waikato Region 87,537
 - o Thames-Coromandel District 4,557

	0 - 4 Years	5 - 9 Years	10 - 14 Years	Total
Parawai	261	282	336	882
Te Rerenga	225	273	297	792
Hikuai	195	204	270	669
Whitianga	195	228	216	639
Whangamata	150	156	198	507
Moanataiari	123	114	129	363
Coromandel	69	102	96	267

Ethnic Group

Thames-Coromandel District, 2001 and 2006 Censuses



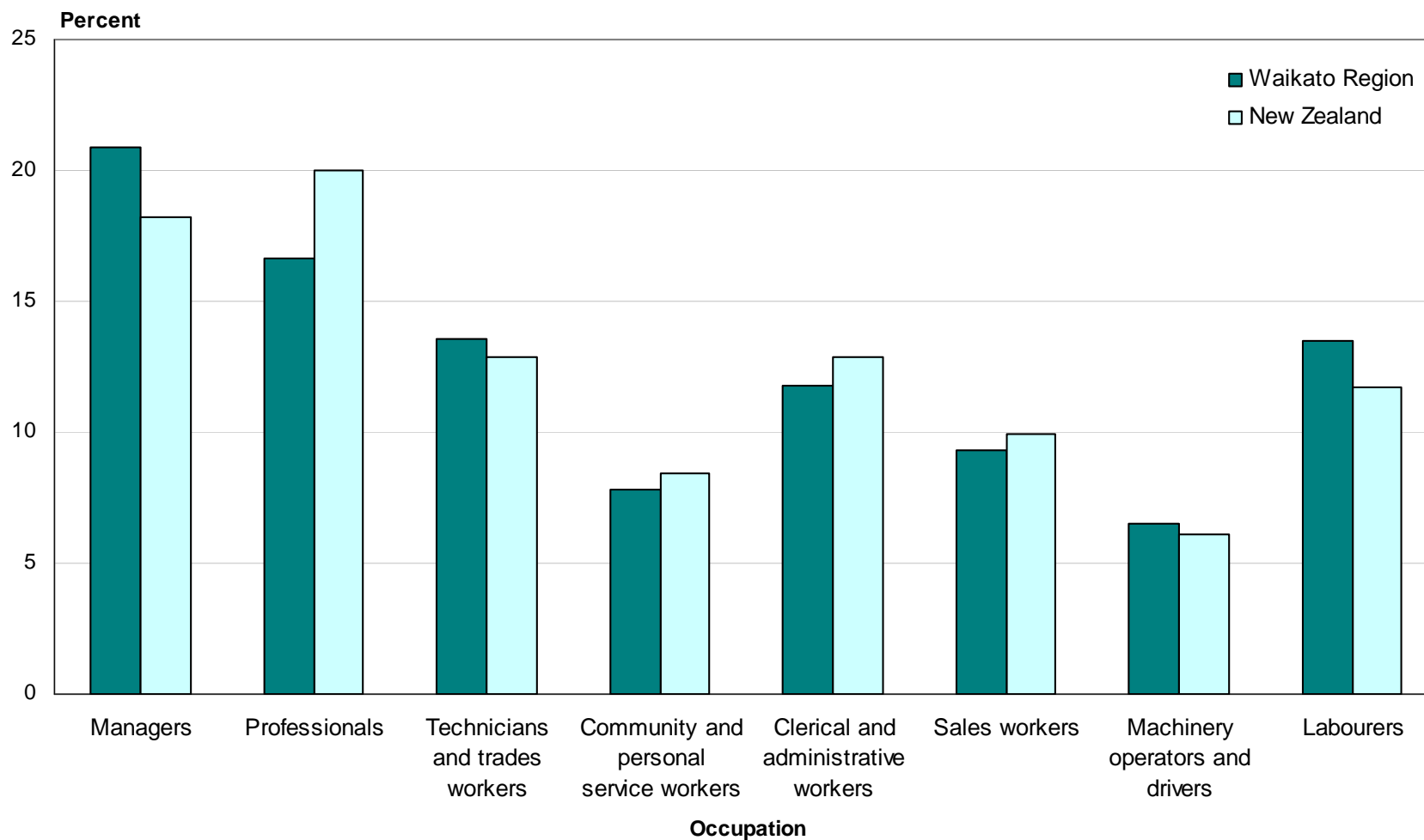
Religious Affiliation (percent)

Waikato Region and New Zealand, 2006 Census

	Region	NZ
Christian (not including Māori Christian)	56.9	58.0
No Religion	39.6	37.1
Māori Christian	2.4	1.9
Hindu	1.0	1.8
Buddhist	1.0	1.5
Islam/Muslim	0.7	1.0
Other Religions	0.8	0.7
Spiritualism and New Age Religions	0.6	0.6
Judaism/Jewish	0.1	0.2

Occupation (ANZSCO)

Waikato Region and New Zealand, 2006 Census



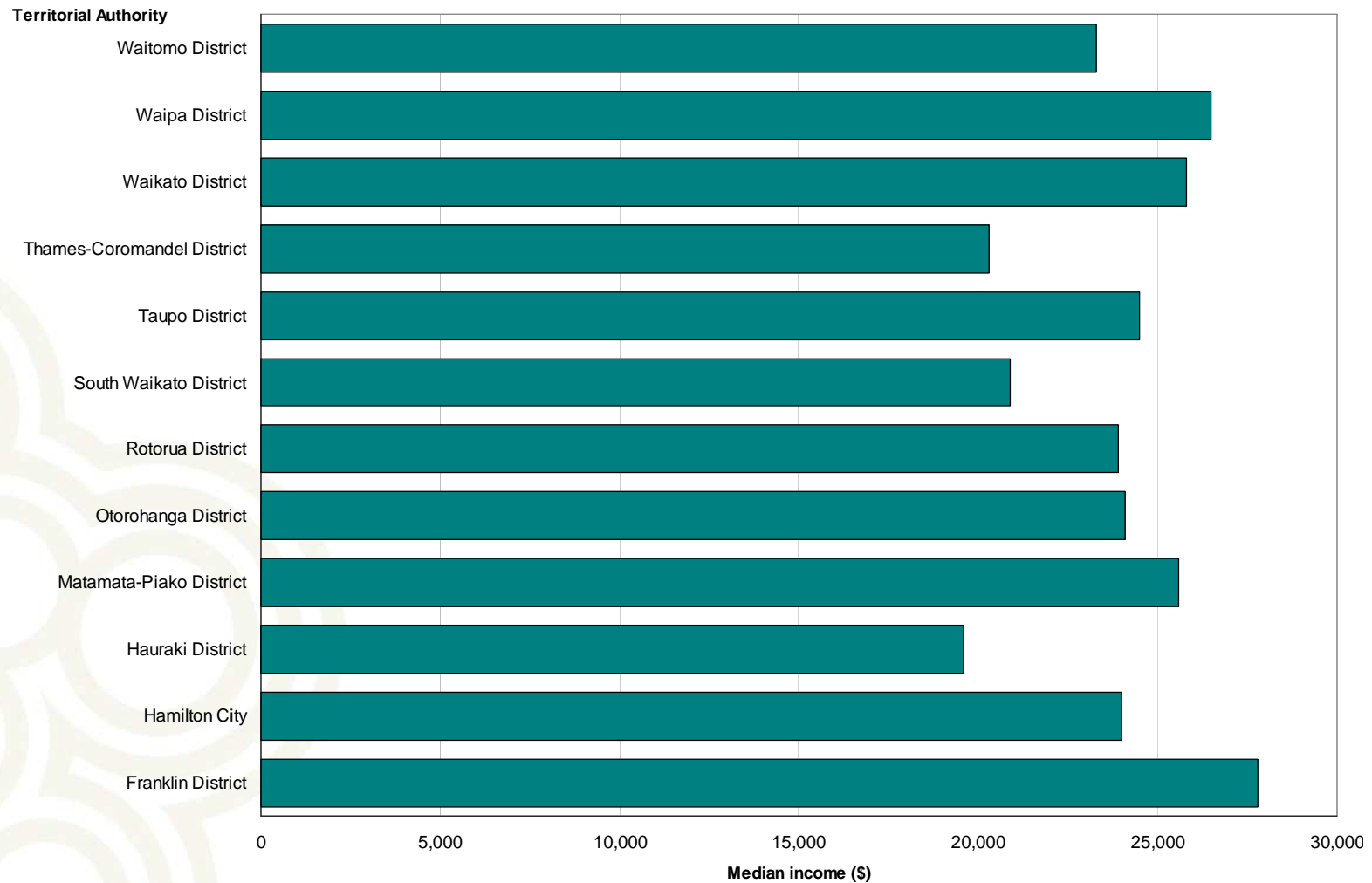
Unpaid Activities

Waikato Region and New Zealand, 2006 Census

	Region	NZ
Helping someone who is ill or has a disability who does not live in own household	9.5	9.1
Household work for own household	86.5	86.1
Looking after a child who does not live in own household	17.7	16.2
Looking after a child who is a member of own household	33.0	31.6
Looking after a member of own household who is ill or has a disability	8.5	7.8
No activities	10.8	11.3
Other helping or voluntary work	16.8	15.4

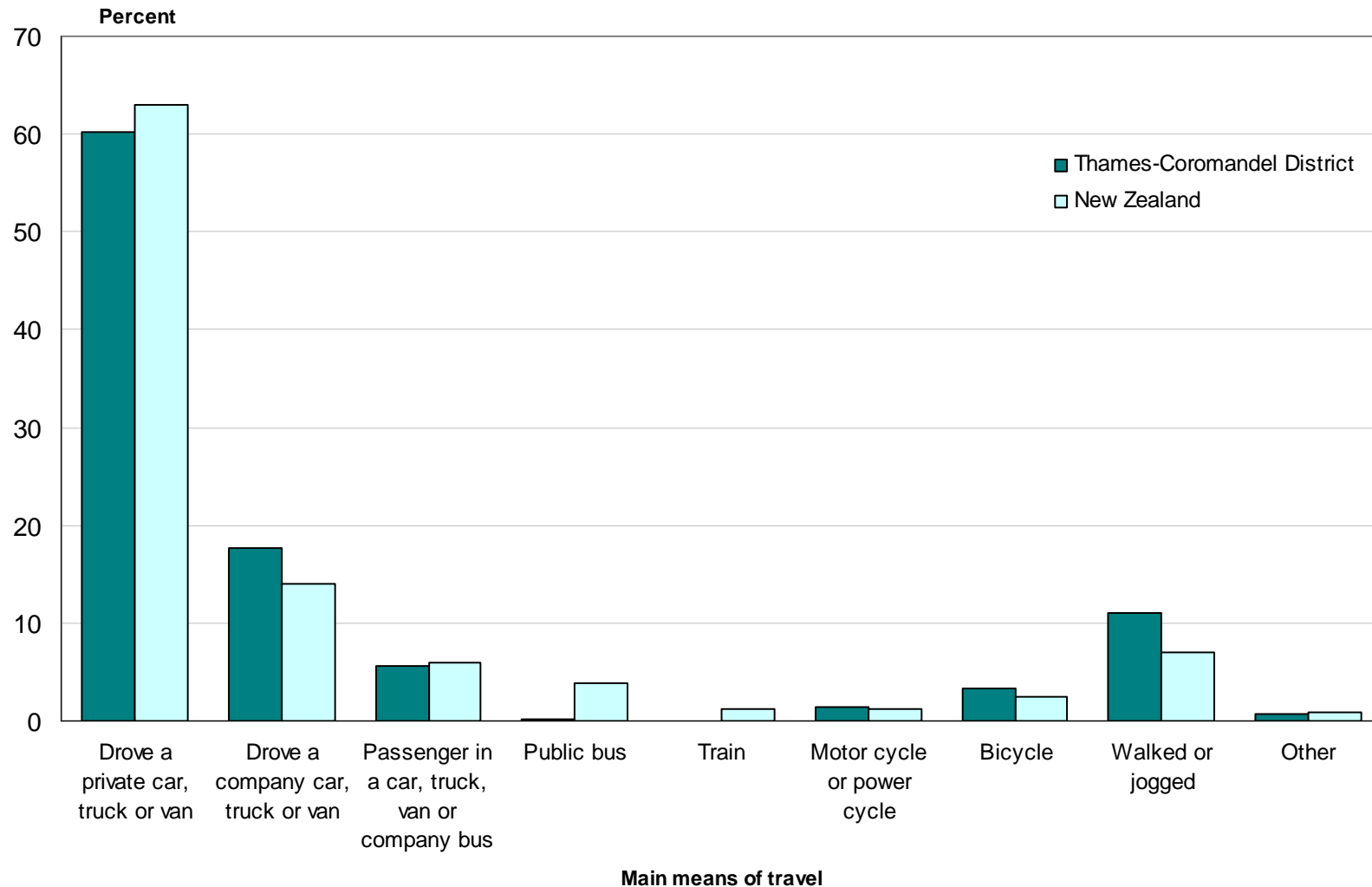
Median Personal Income

Territorial Authorities in Waikato Region, 2006 Census



Main Means of Travel to Work

Thames-Coromandel District and New Zealand, 2006 Census



Private occupied dwellings

New Zealand 1,471,746

- 8.2 percent increase from 2001

Waikato Region 140,268

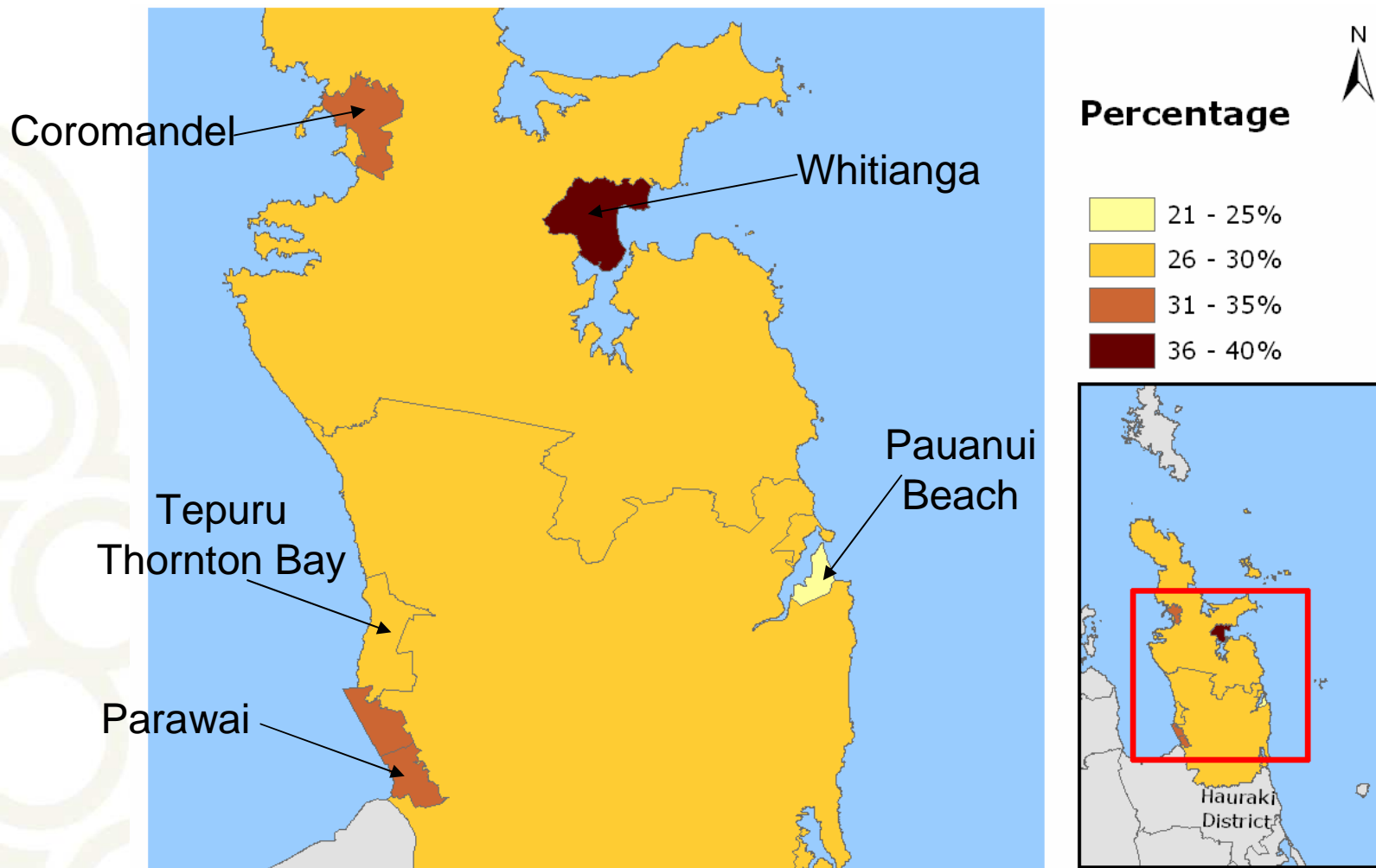
- 8.7 percent increase from 2001

Thames-Coromandel District 11,382

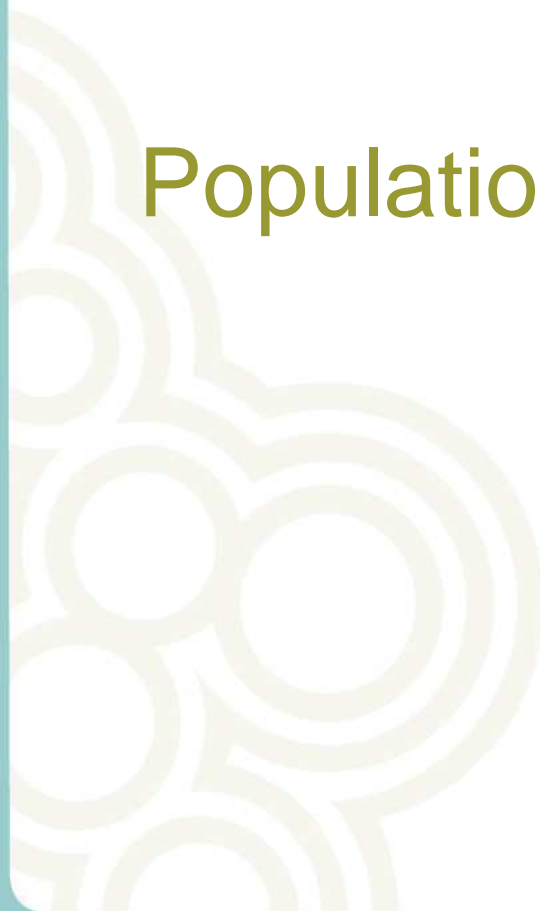
- 4.8 percent increase from 2001

Dwellings Not Owned by Usual Resident(s)

Thames-Coromandel District (Area Unit), 2006 Census



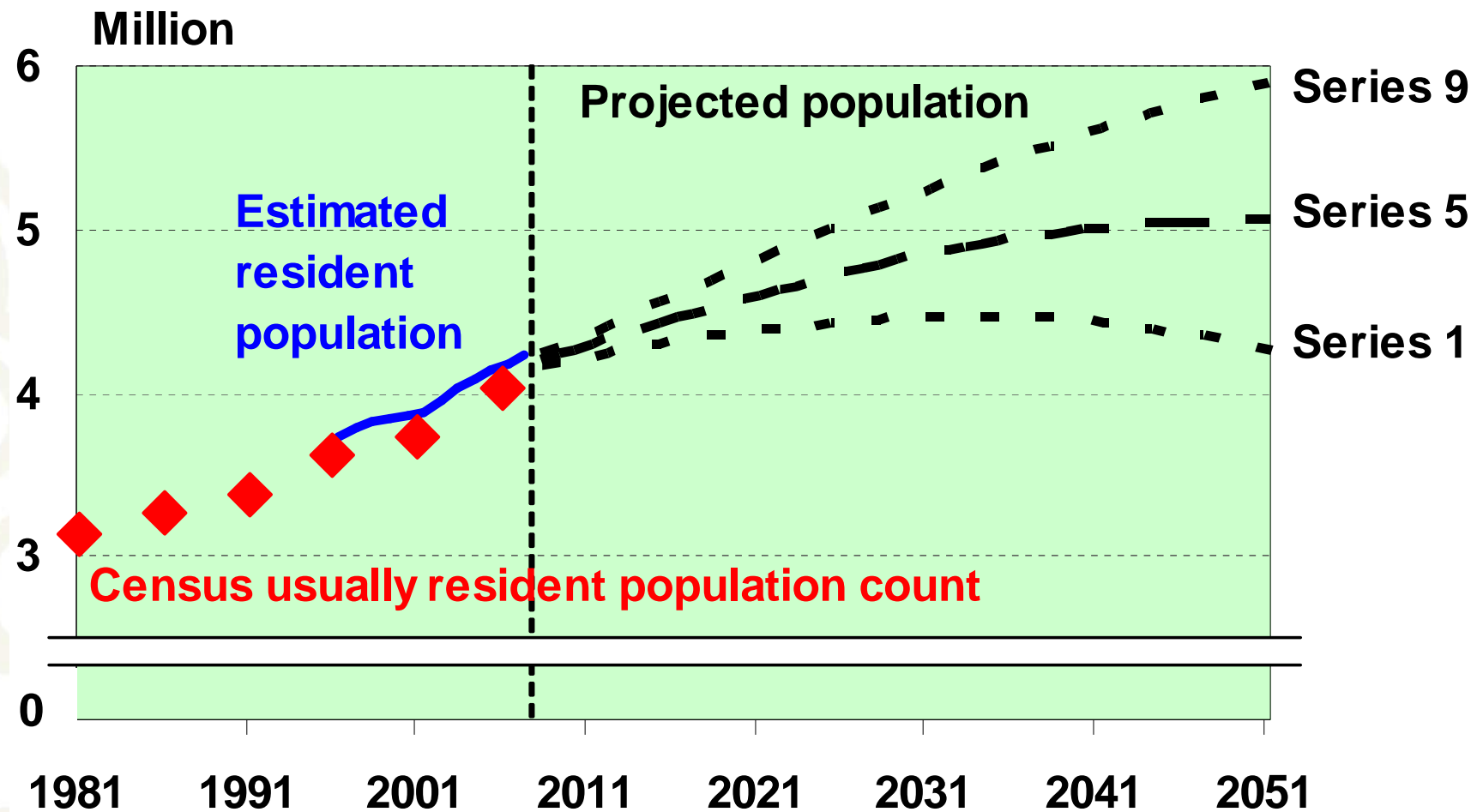
Population estimates and projections



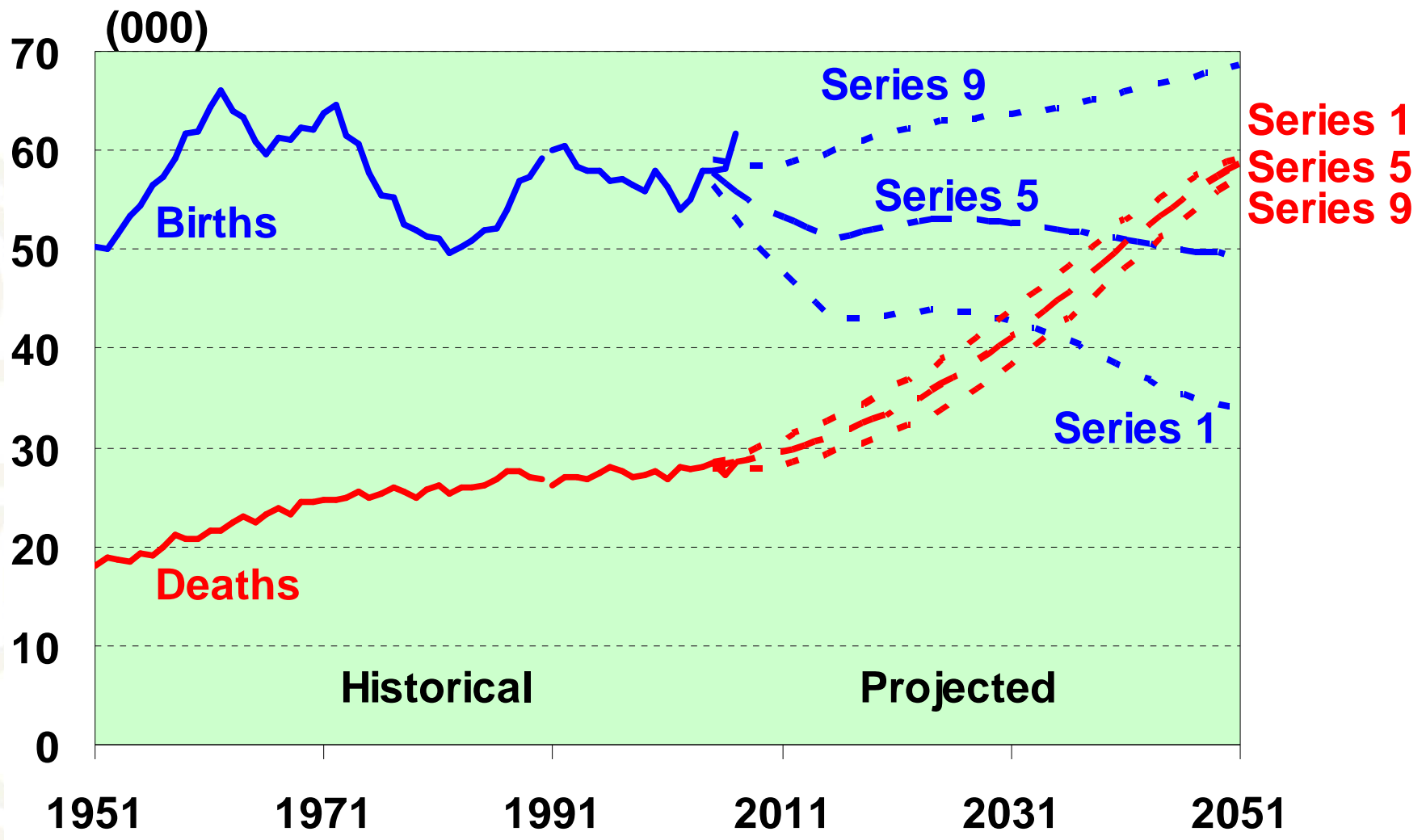
Estimated resident population

- The best measure of who lives in an area
- A census base (excluding overseas visitors) adjusted for:
 - o Net census undercount
 - o Residents temporarily overseas
 - o Births, deaths and net migration to 30 June 2006
- Limited variables (age, sex, ethnicity)
- Provides base for population projections

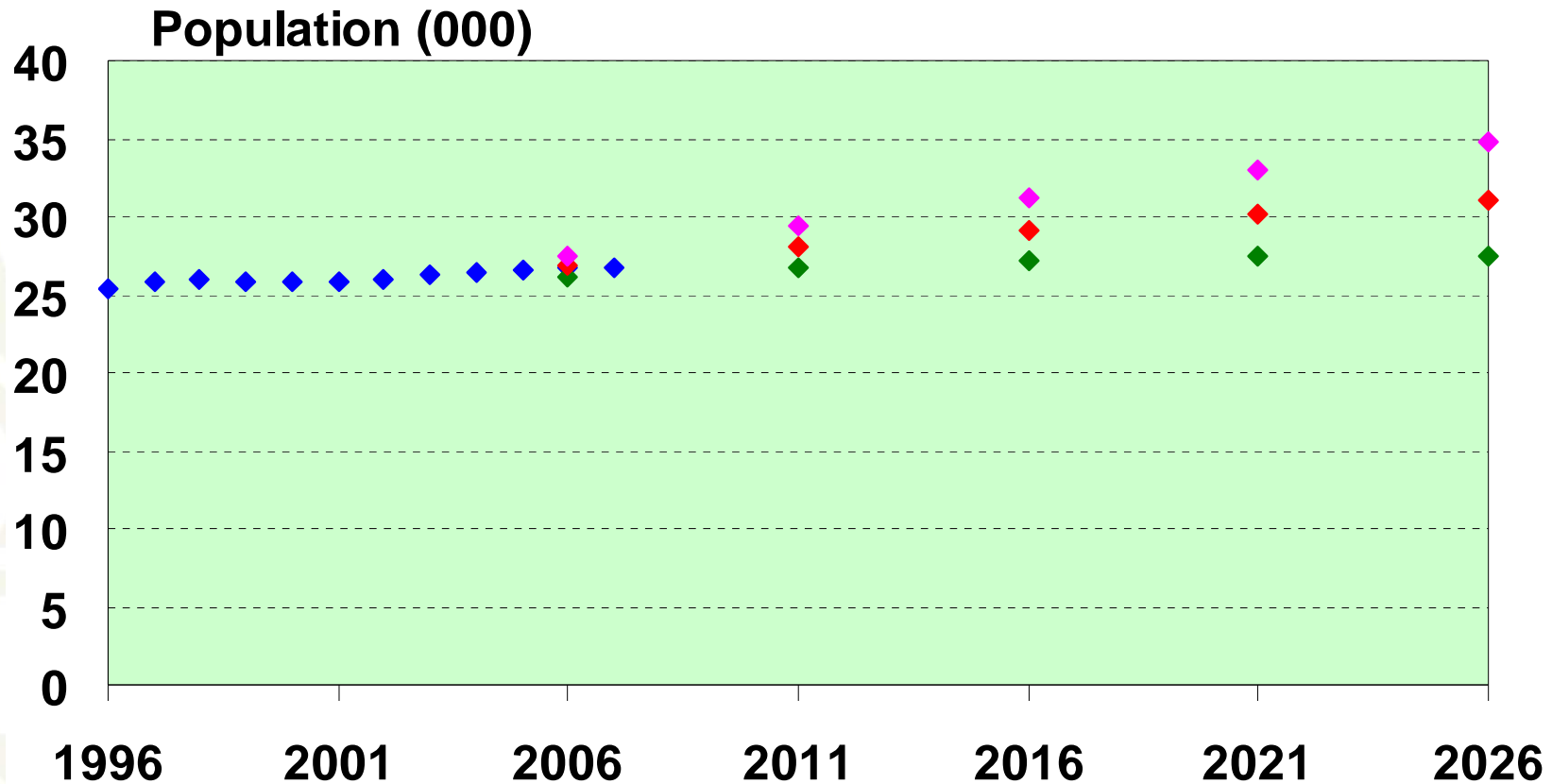
New Zealand population



New Zealand shrinking natural increase

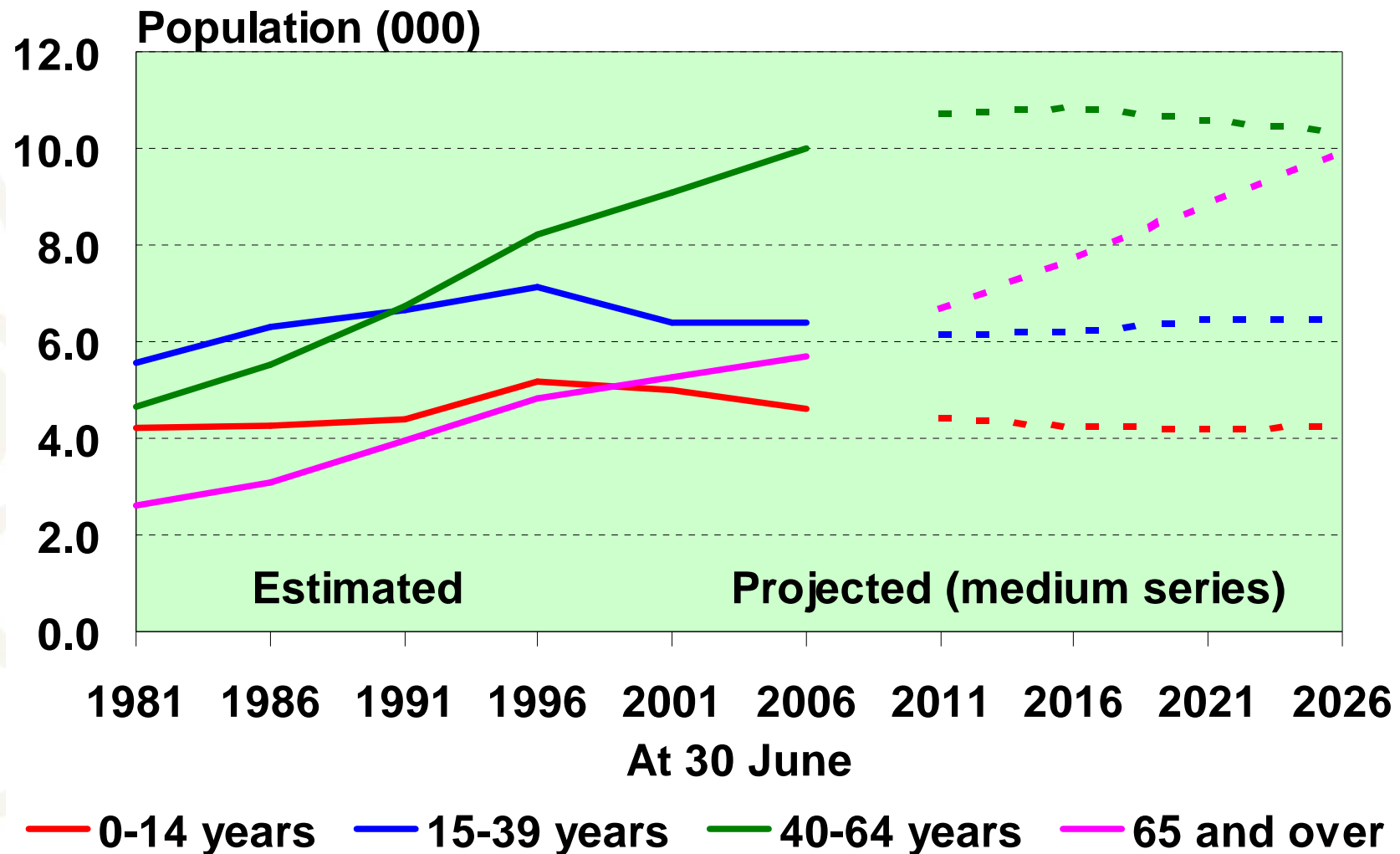


Population of Thames-Coromandel



- ◆ Estimated resident population
- ◆ Low population projection
- ◆ Medium population projection
- ◆ High population projection

Thames-Coromandel: growth in older ages



Key release dates: 2006-base population estimates

21 August 2007: first 2006-base population estimates

June 2006 data on Table Builder

- o National and subnational estimates June 2006
- o Area unit estimates June 2006 (NEW)
- o National estimates June 2007 Quarter

23 October 2007

- o Subnational estimates June 2007

December 2007

- o Area unit estimates June 2007 (NEW)

Population Projections – release dates

- National population projections: 24 October 2007
- Subnational population projections: 3 December 2007
- National ethnic projections: 2 April 2008
- National labour force projections: 6 May 2008
- Area unit population projections: mid 2008
- Family and household projections: 2008/09