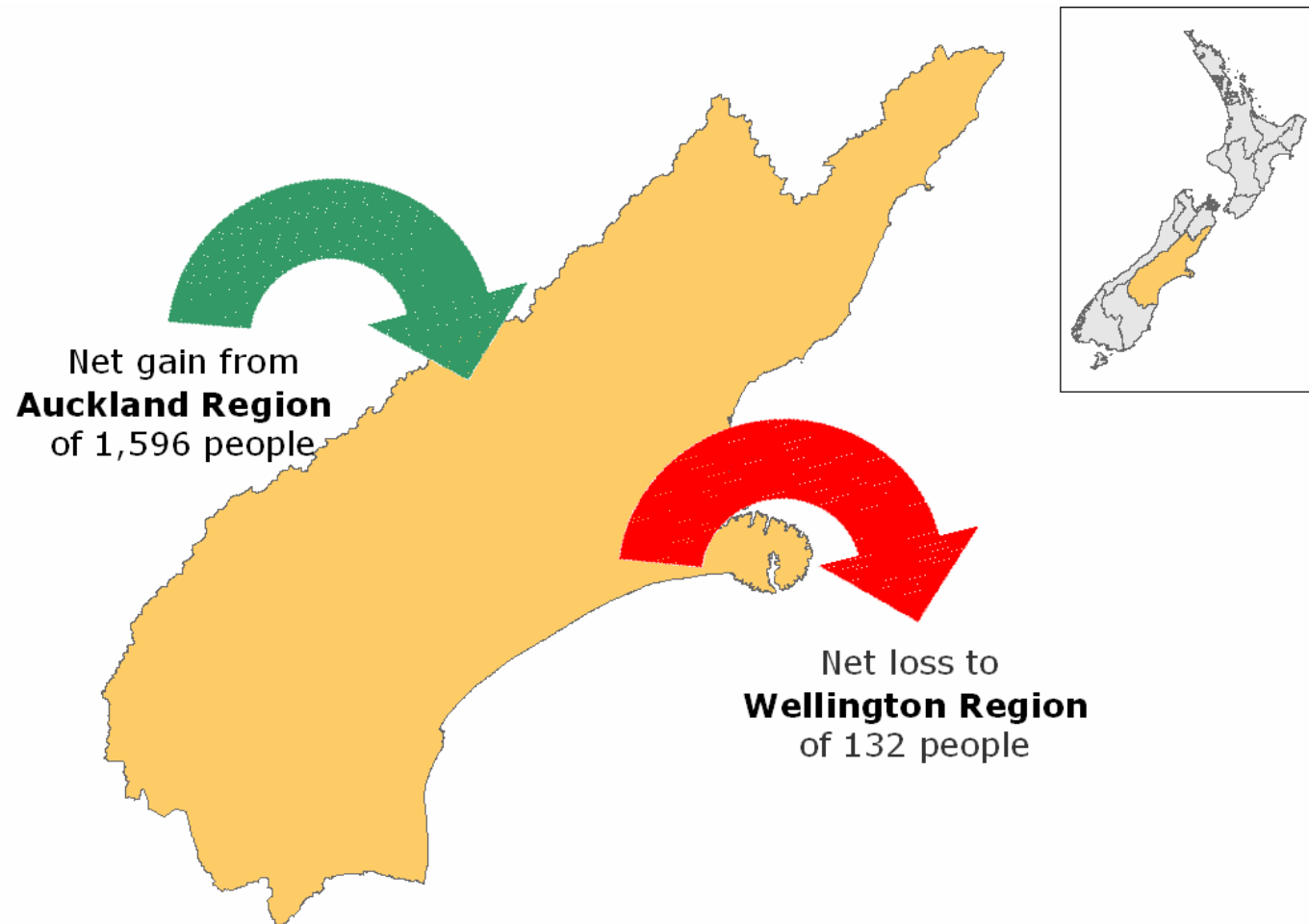


# What we look like locally



# Net Migration for Canterbury Region

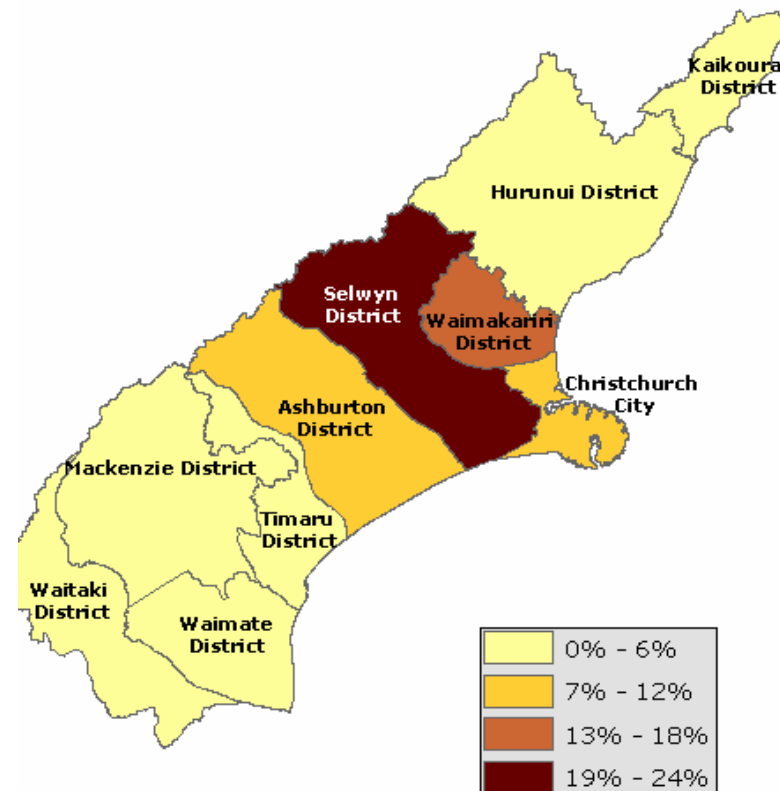


# Usually Resident Population

Percentage change from 2001

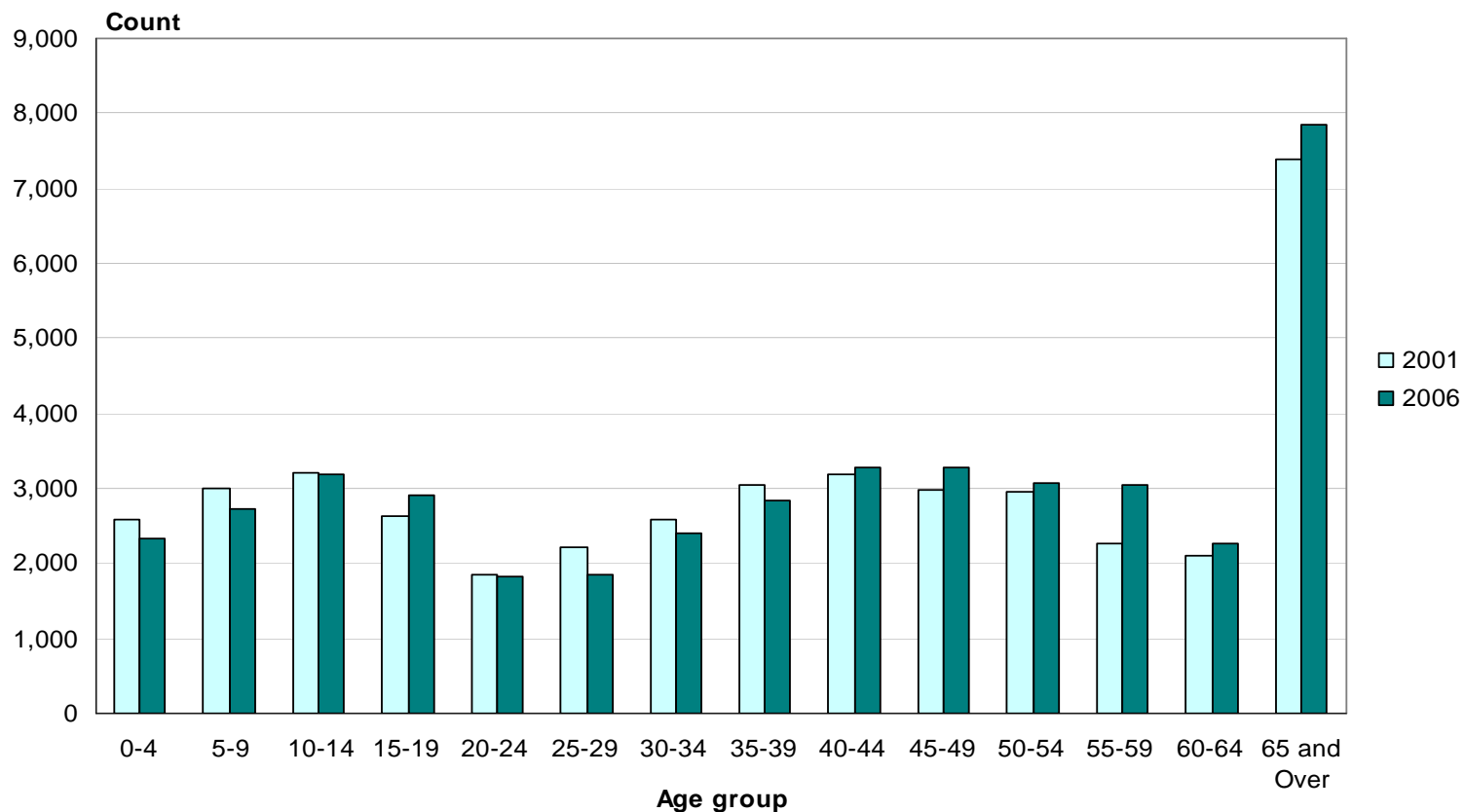
o Canterbury Region  
521,832

o Timaru District  
42,867



# Age (5 years)

## Timaru District, 2001 and 2006 Censuses



Median age for Timaru District 41.7 years

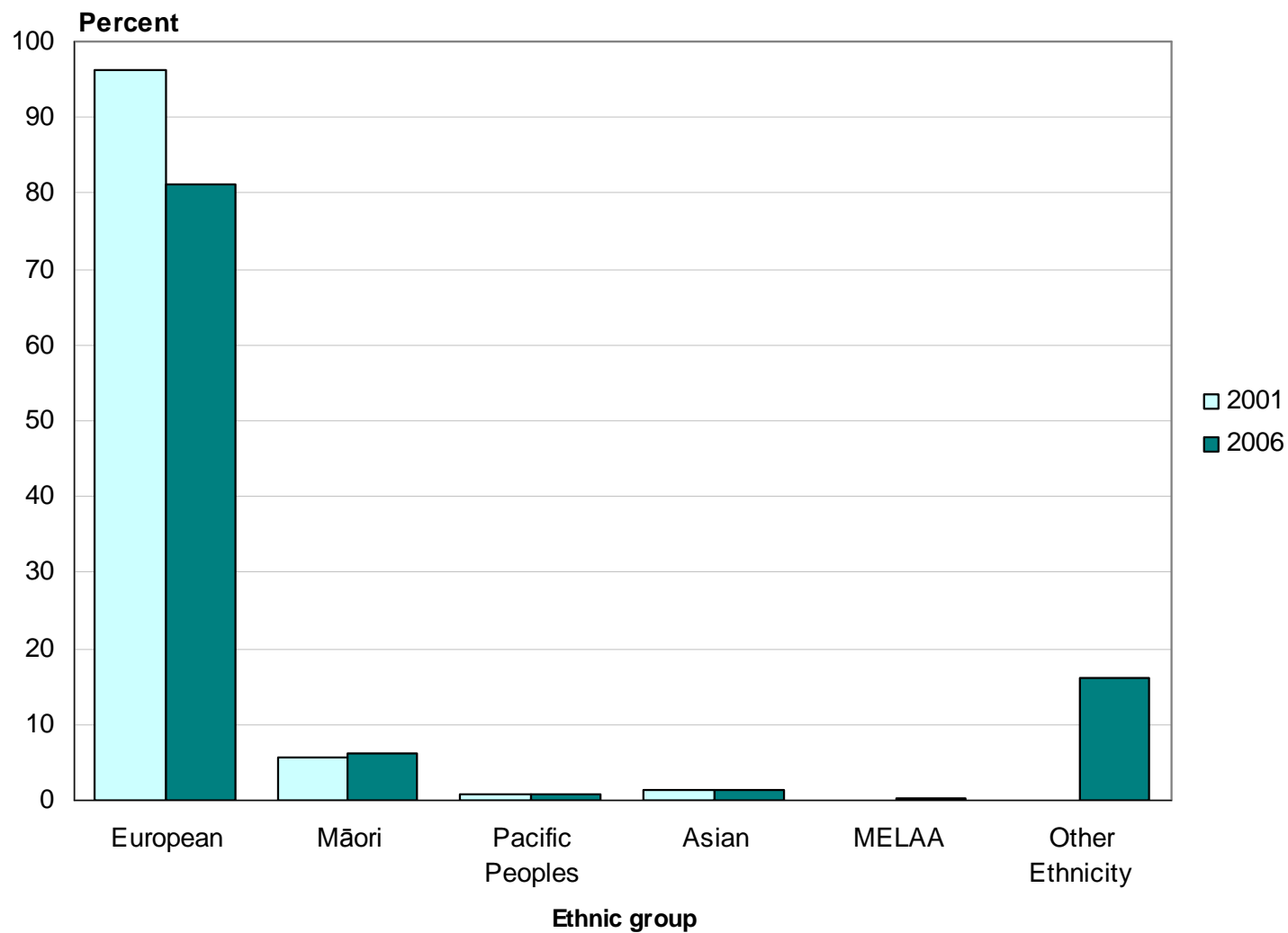
## Who needs a holiday programme?

- Number of children under 15 years
  - o Canterbury Region      102,486
  - o Timaru District            8,256

	0 - 4 Years	5 - 9 Years	10 - 14 Years	Total
Orari	249	273	327	846
Levels	195	279	342	813
Temuka	228	273	291	795
Marchwiell	222	249	255	726
Highfield	162	213	252	627
Fraser Park	150	195	198	543
Parkside	141	150	201	489

# Ethnic Group

## Timaru District, 2001 and 2006 Censuses



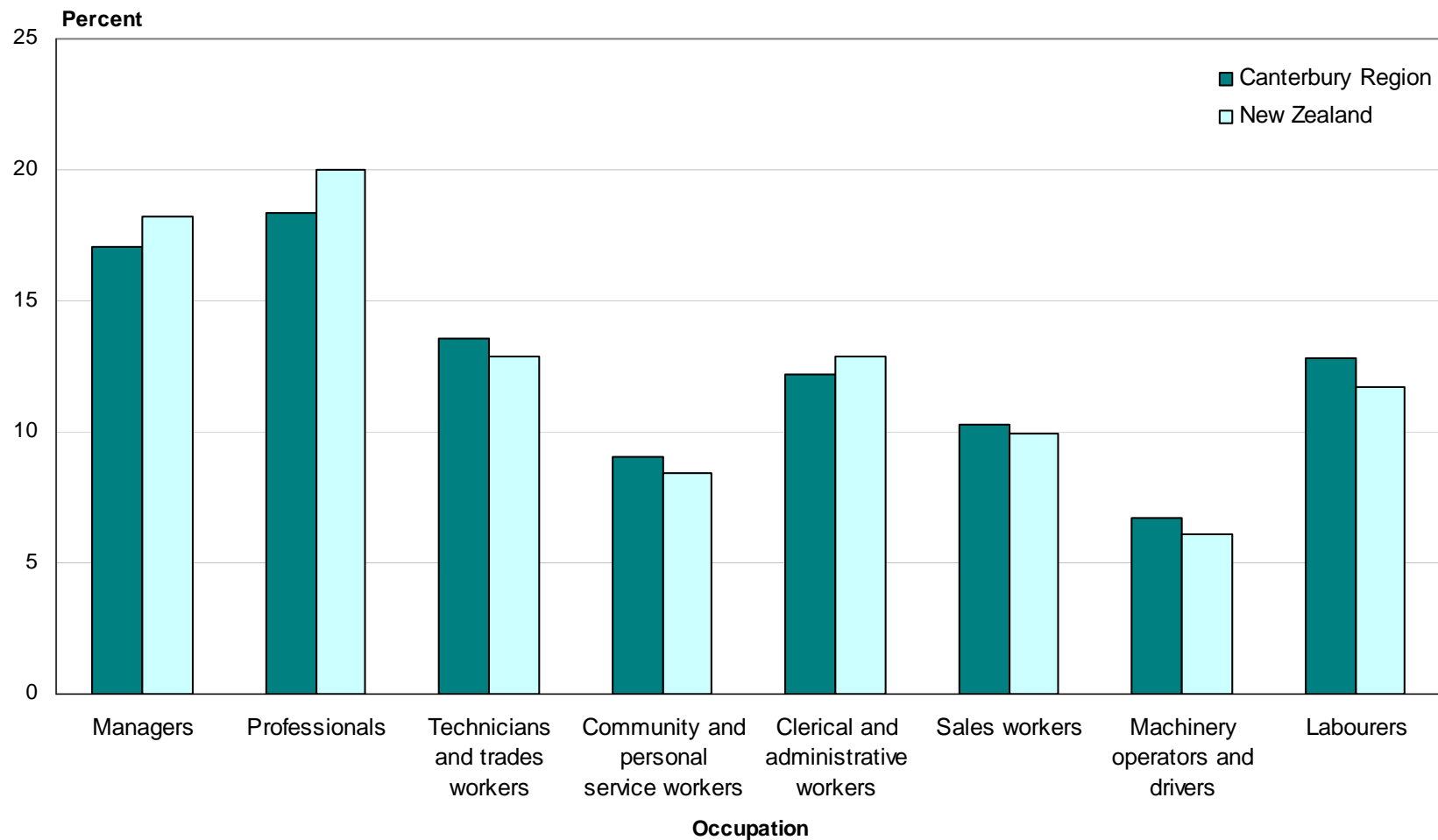
# Religious Affiliation (percent)

Canterbury Region and New Zealand, 2006 Census

	Region	NZ
Christian (not including Māori Christian)	60.1	58.0
No Religion	38.7	37.1
Māori Christian	0.6	1.9
Hindu	0.5	1.8
Buddhist	1.1	1.5
Islam/Muslim	0.6	1.0
Other Religions	0.4	0.7
Spiritualism and New Age Religions	0.6	0.6
Judaism/Jewish	0.1	0.2

# Occupation (ANZSCO)

## Canterbury Region and New Zealand, 2006 Census



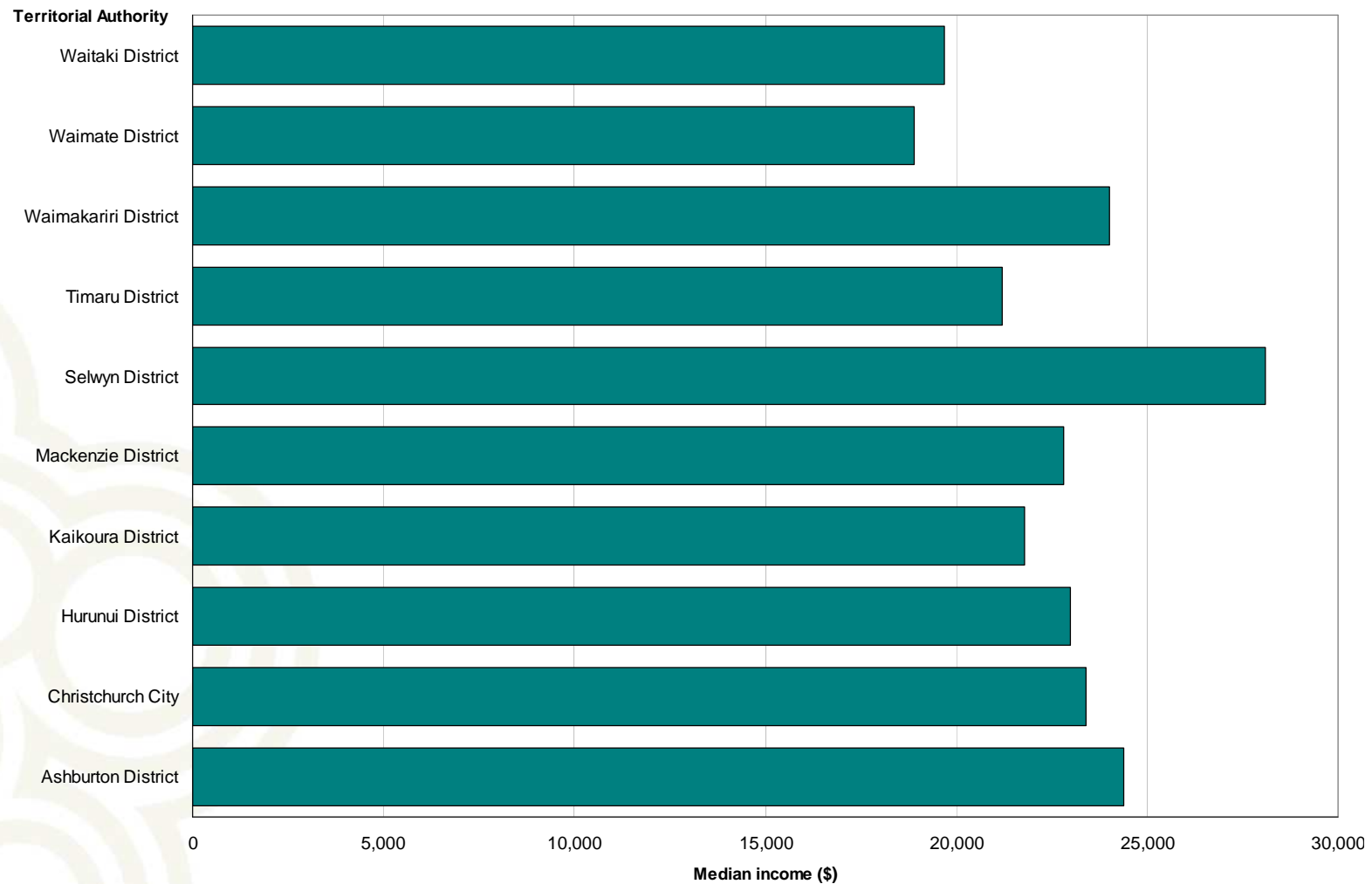
# Unpaid Activities

## Canterbury Region and New Zealand, 2006 Census

	Region	NZ
Helping someone who is ill or has a disability who does not live in own household	9.2	9.1
Household work for own household	86.3	86.1
Looking after a child who does not live in own household	16.5	16.2
Looking after a child who is a member of own household	29.9	31.6
Looking after a member of own household who is ill or has a disability	7.2	7.8
No activities	11.2	11.3
Other helping or voluntary work	15.1	15.4

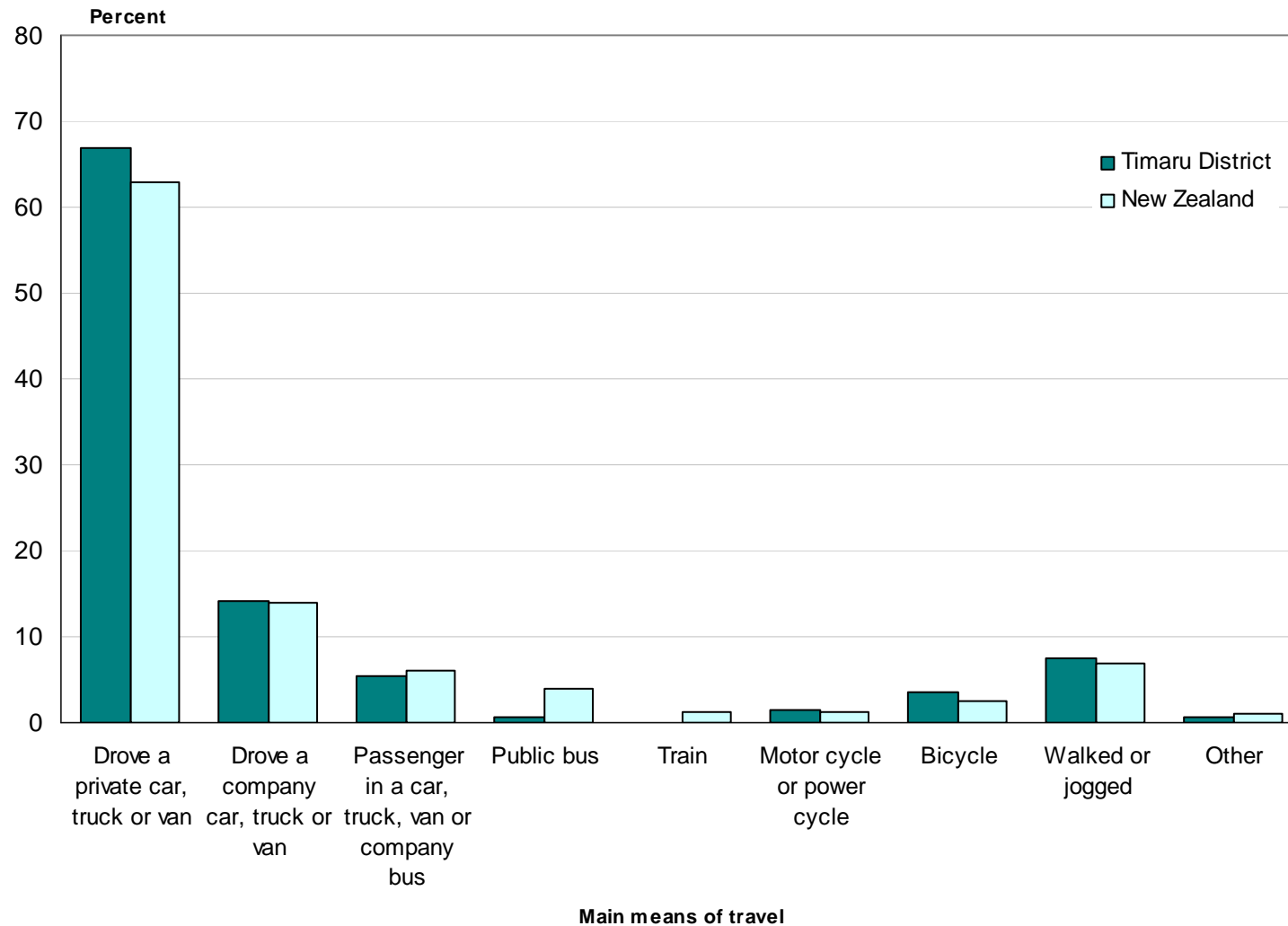
# Median Personal Income

## Territorial Authorities in Canterbury Region, 2006 Census



# Main Means of Travel to Work

## Timaru District and New Zealand, 2006 Census



## Private occupied dwellings

New Zealand 1,471,746

- 8.2 percent increase from 2001

Canterbury Region 201,657

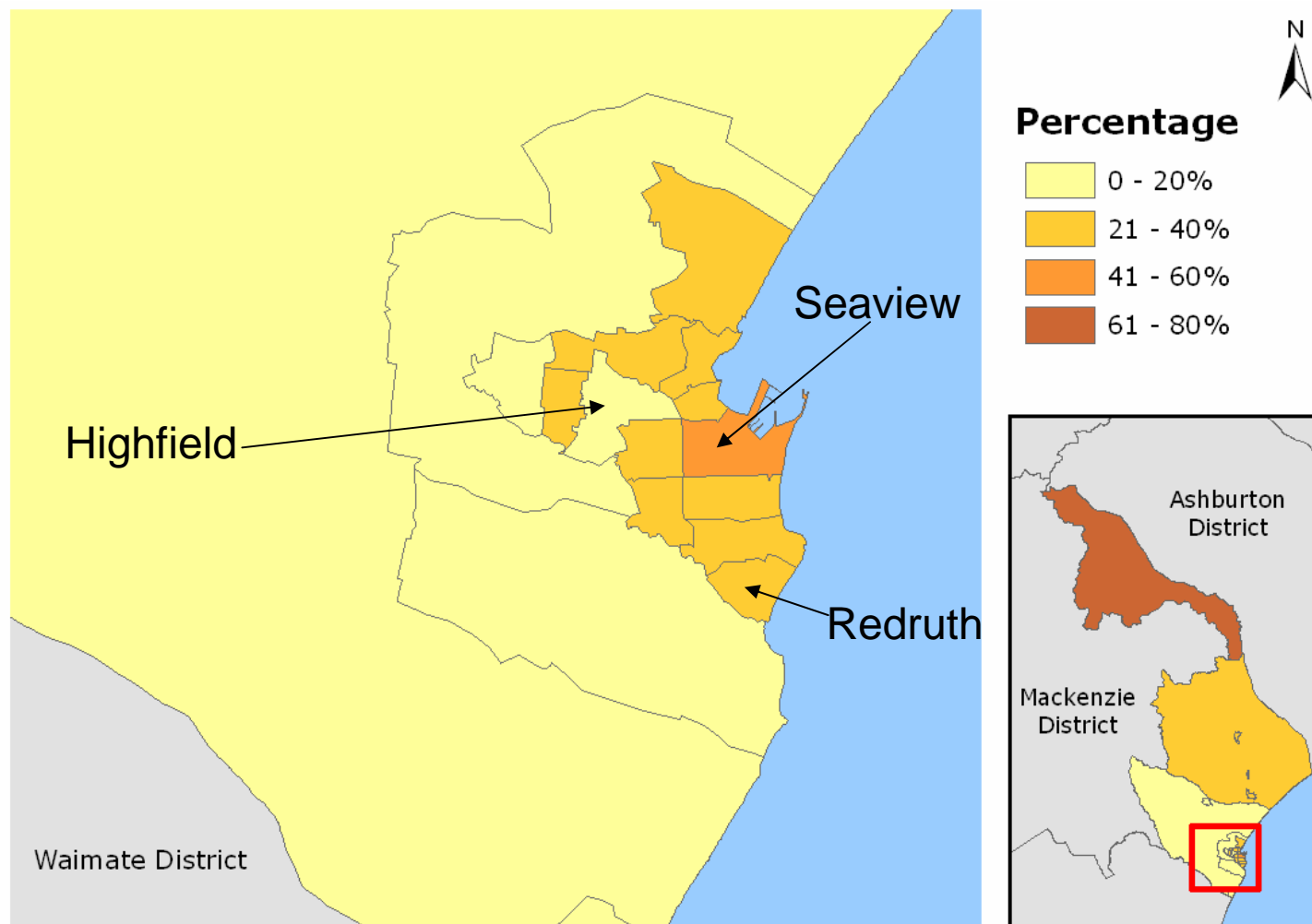
- 8.2 percent increase from 2001

Timaru District 17,601

- 3.6 percent increase from 2001

# Dwellings Not Owned by Usual Resident(s)

## Timaru District (Area Unit), 2006 Census



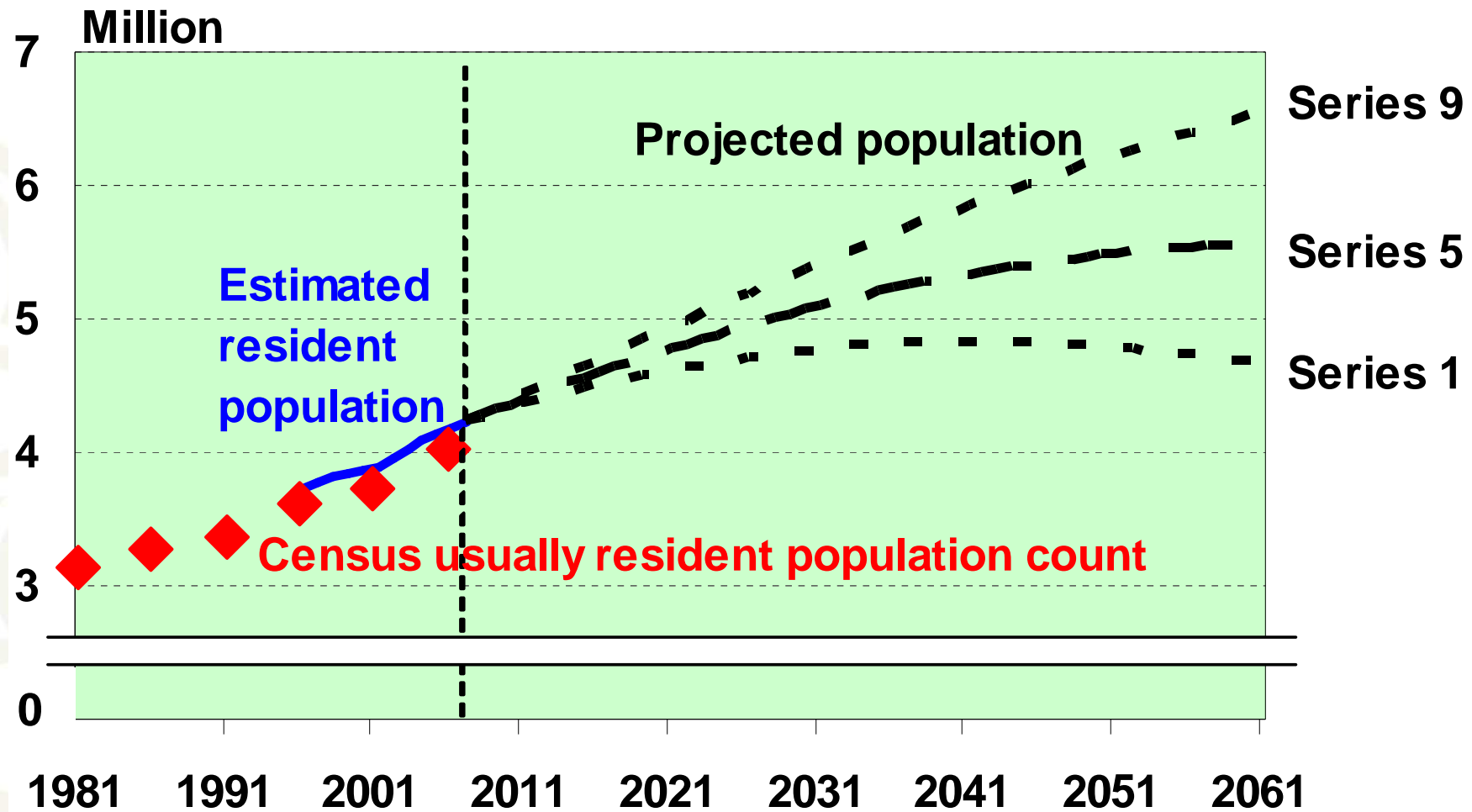
# Population estimates and projections

A decorative graphic in the bottom-left corner consisting of several overlapping, light-colored circles of varying sizes, creating a pattern that resembles a stylized map or a cluster of data points.

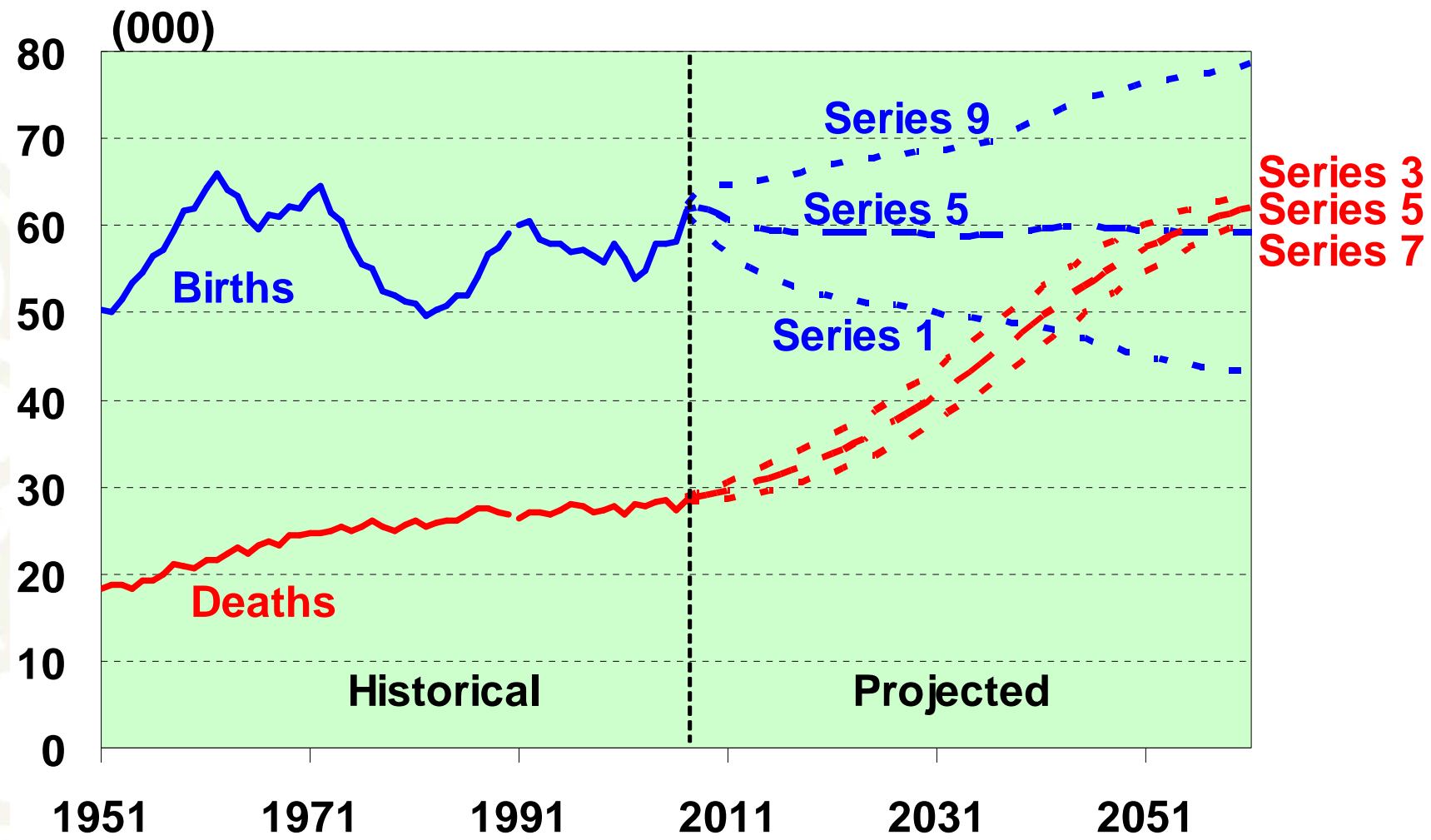
## Estimated resident population

- The best measure of who lives in an area
- A census base (excluding overseas visitors) adjusted for:
  - o Net census undercount
  - o Residents temporarily overseas
  - o Births, deaths and net migration to 30 June 2006
- Limited variables (age, sex, ethnicity)
- Provides base for population projections

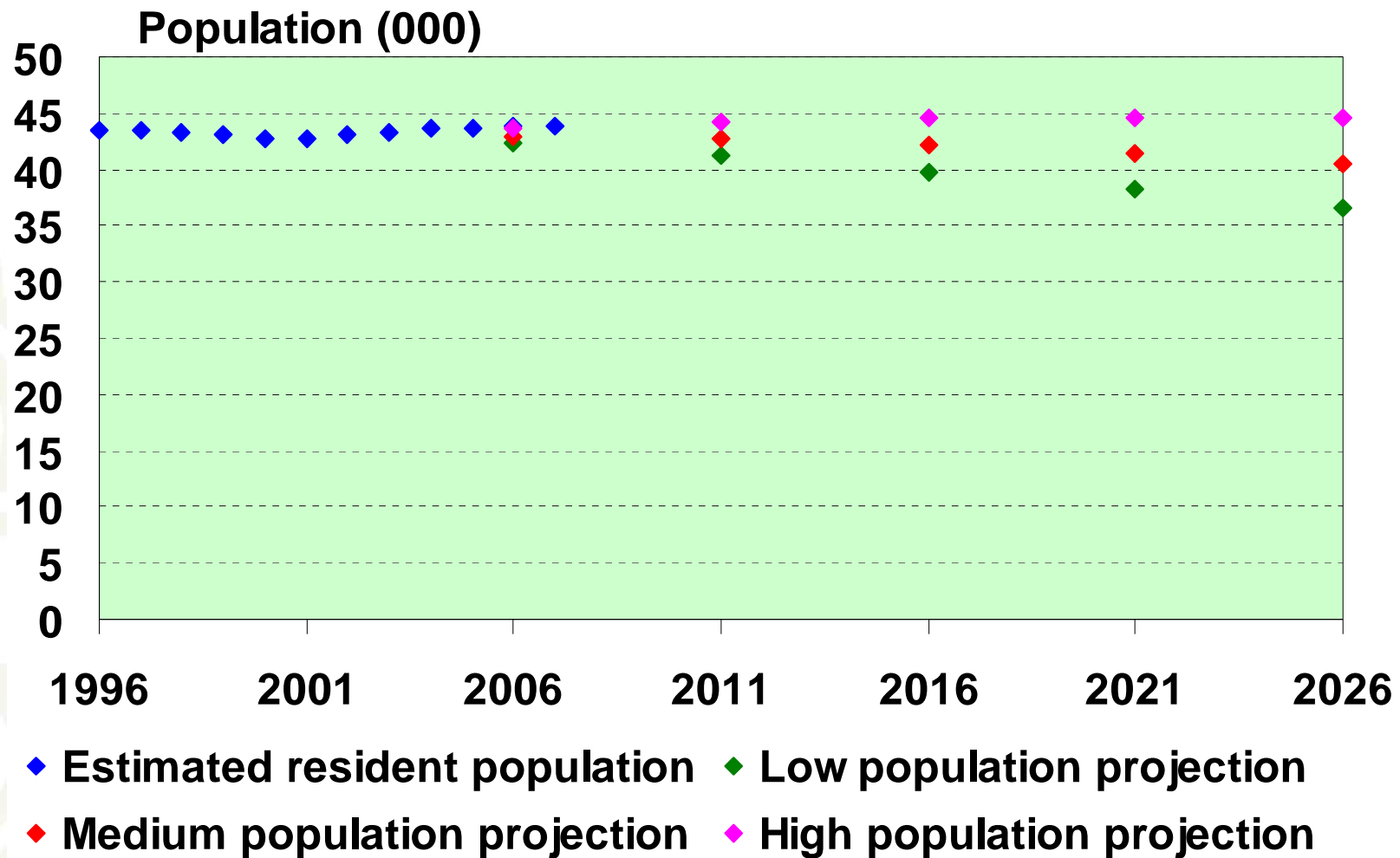
# New Zealand population



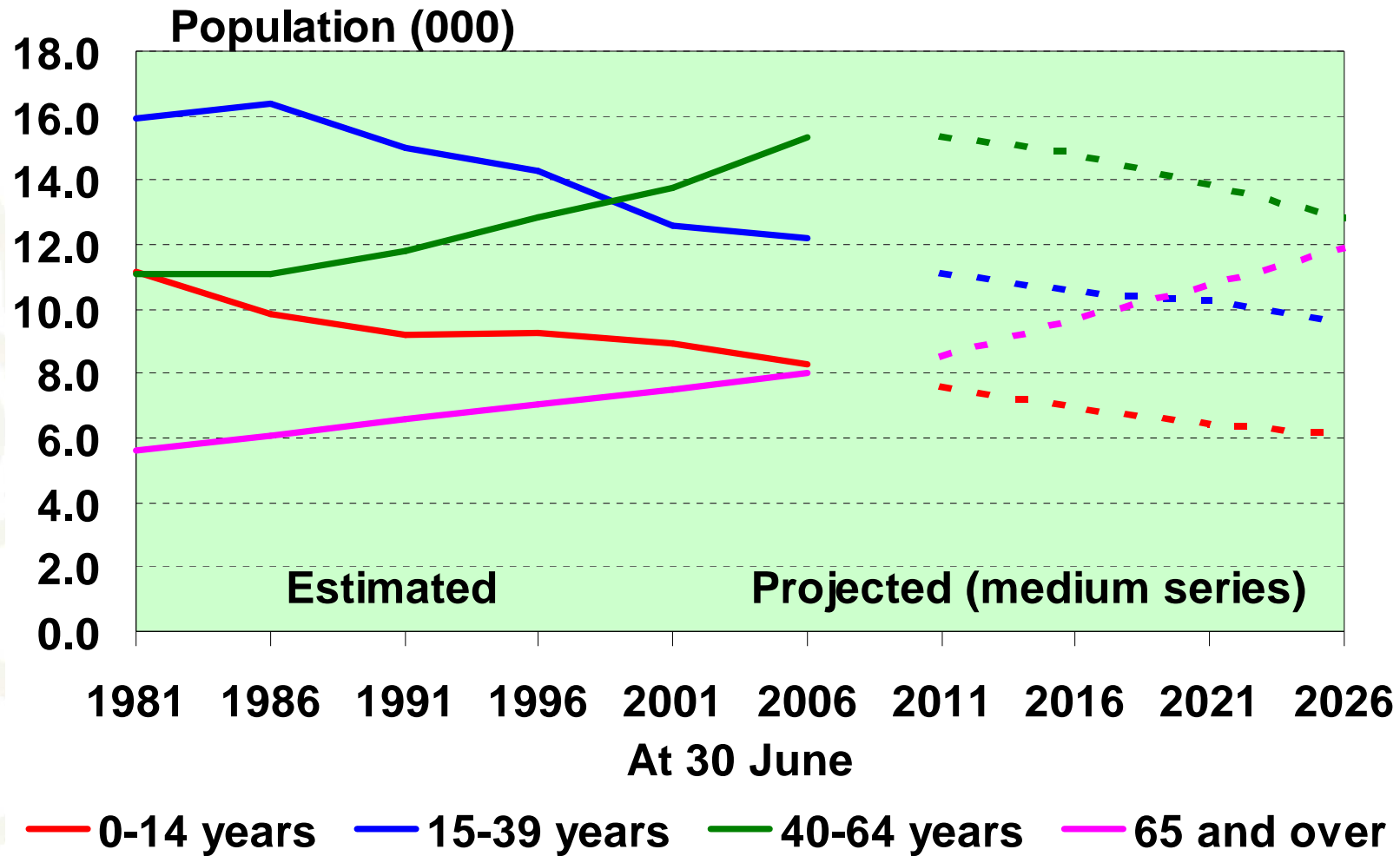
# New Zealand shrinking natural increase



# Population of Timaru District



## Timaru District: growth in older ages



## Key release dates: 2006-base population estimates

21 August 2007: first 2006-base population estimates

*June 2006 data on Table Builder*

- o National and subnational estimates June 2006
- o Area unit estimates June 2006 (NEW)
- o National estimates June 2007 Quarter

23 October 2007

- o Subnational estimates June 2007

December 2007

- o Area unit estimates June 2007 (NEW)

## Population Projections – release dates

- National population projections: 24 October 2007
- Subnational population projections: 3 December 2007
- National ethnic projections: 2 April 2008
- National labour force projections: 6 May 2008
- Area unit population projections: mid 2008
- Family and household projections: 2008/09