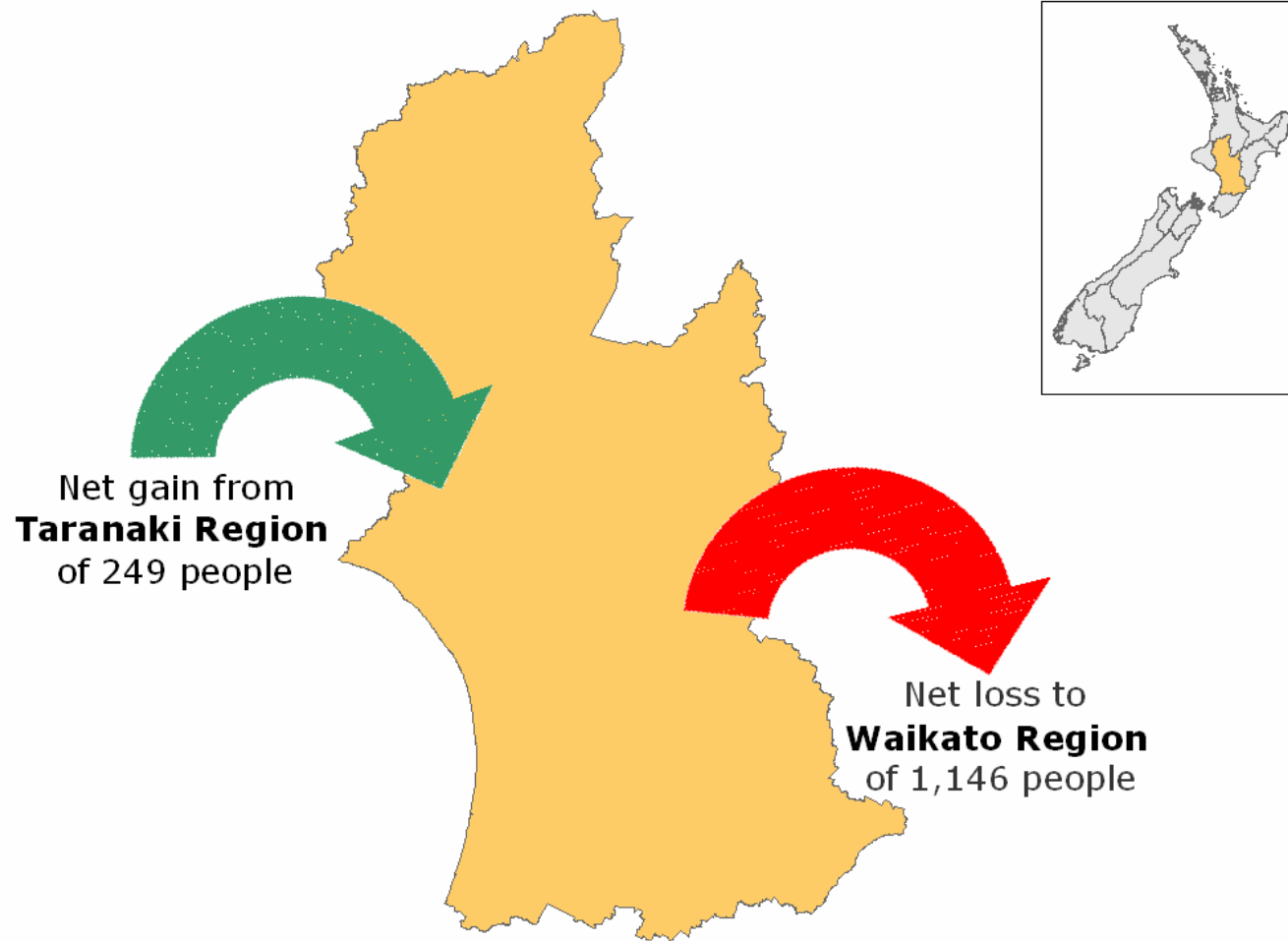


What we look like locally



Net Migration for Manawatu-Wanganui Region

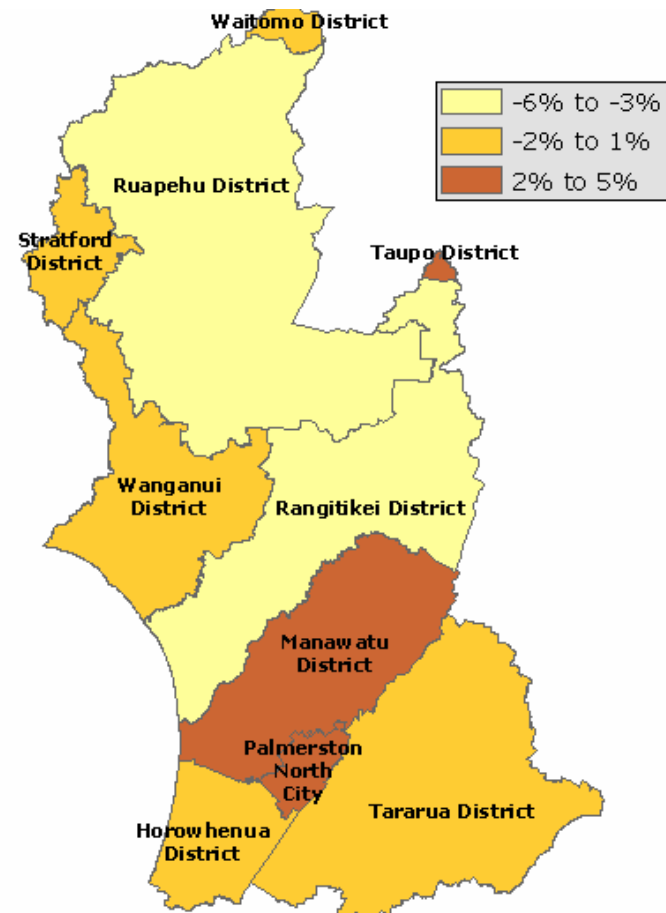


Usually Resident Population

Percentage change from 2001

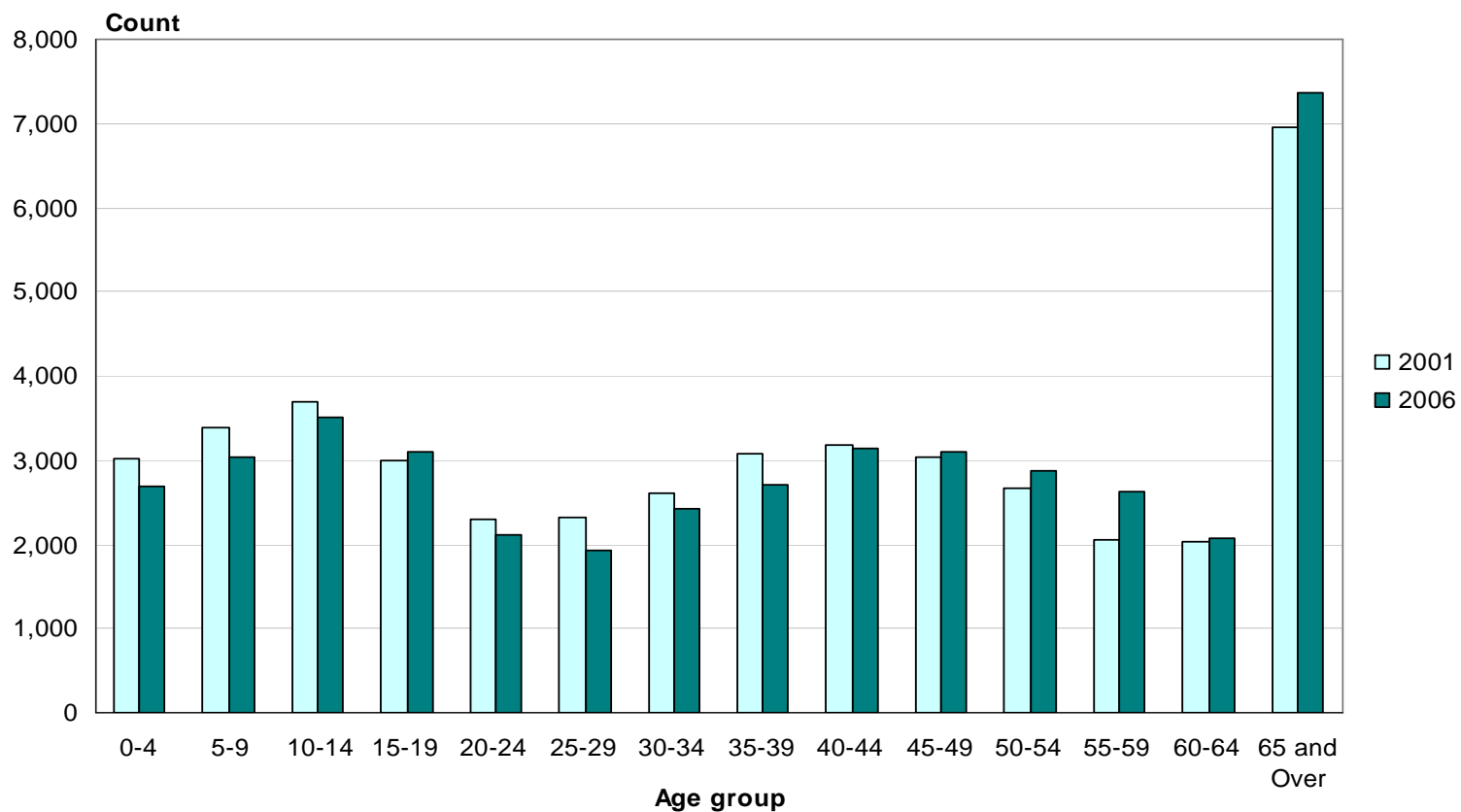
o Manawatu-Wanganui Region
222,423

o Wanganui District
42,636



Age (5 years)

Wanganui District, 2001 and 2006 Censuses



Median age for Wanganui District 38.8 years

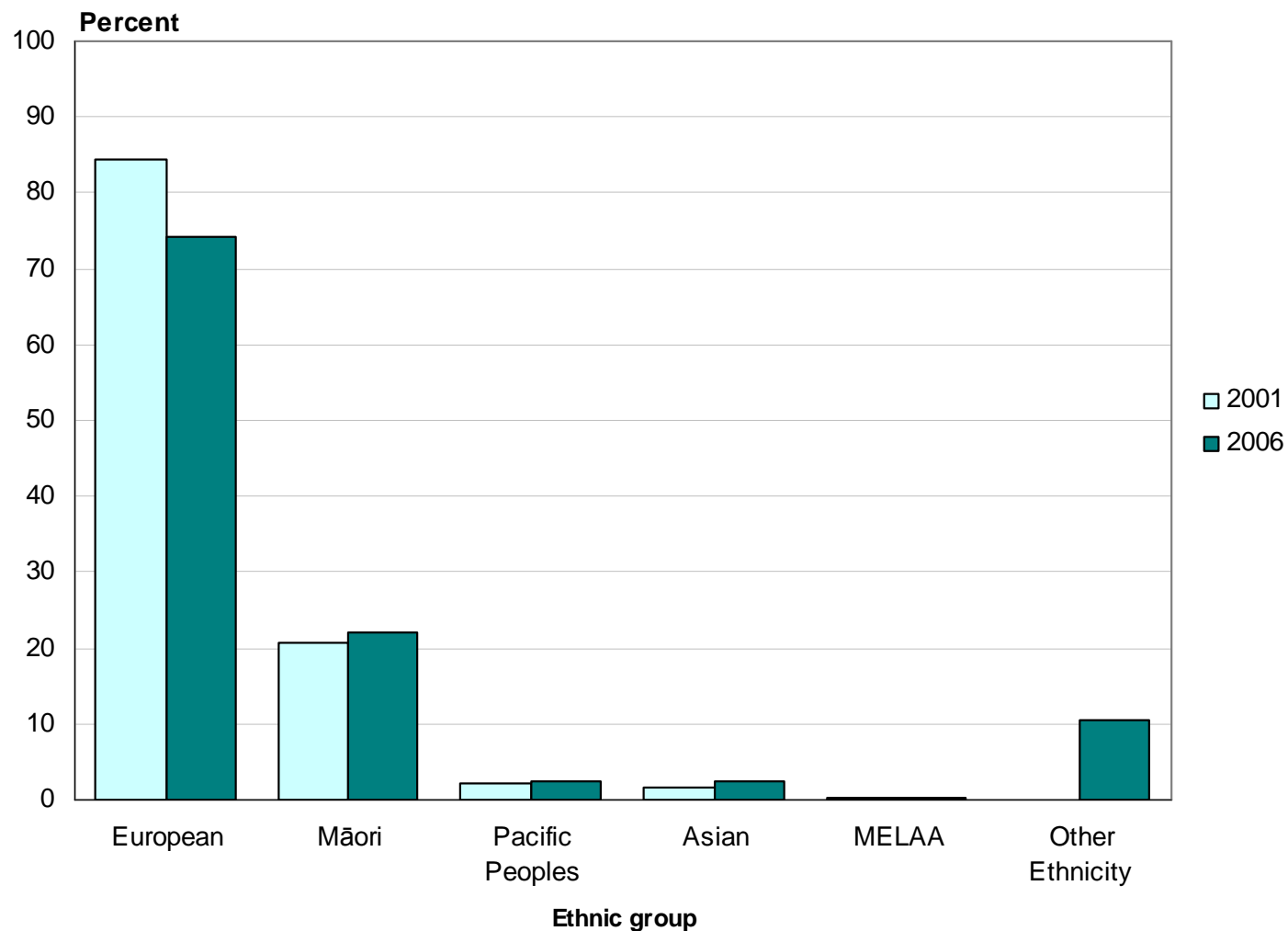
Who needs a holiday programme?

- Number of children under 15 years
 - o Manawatu-Wanganui Region 48,423
 - o Wanganui District 9,231

	0 - 4 Years	5 - 9 Years	10 - 14 Years	Total
Gonville South	234	228	273	735
Castlecliff North	147	180	183	513
Upper Aramoho	156	180	171	507
Fordell-Kakatahi	129	162	195	486
Laird Park	153	162	168	483
Lower Aramoho	138	153	159	453
Williams Domain	153	147	147	447

Ethnic Group

Wanganui District, 2001 and 2006 Censuses



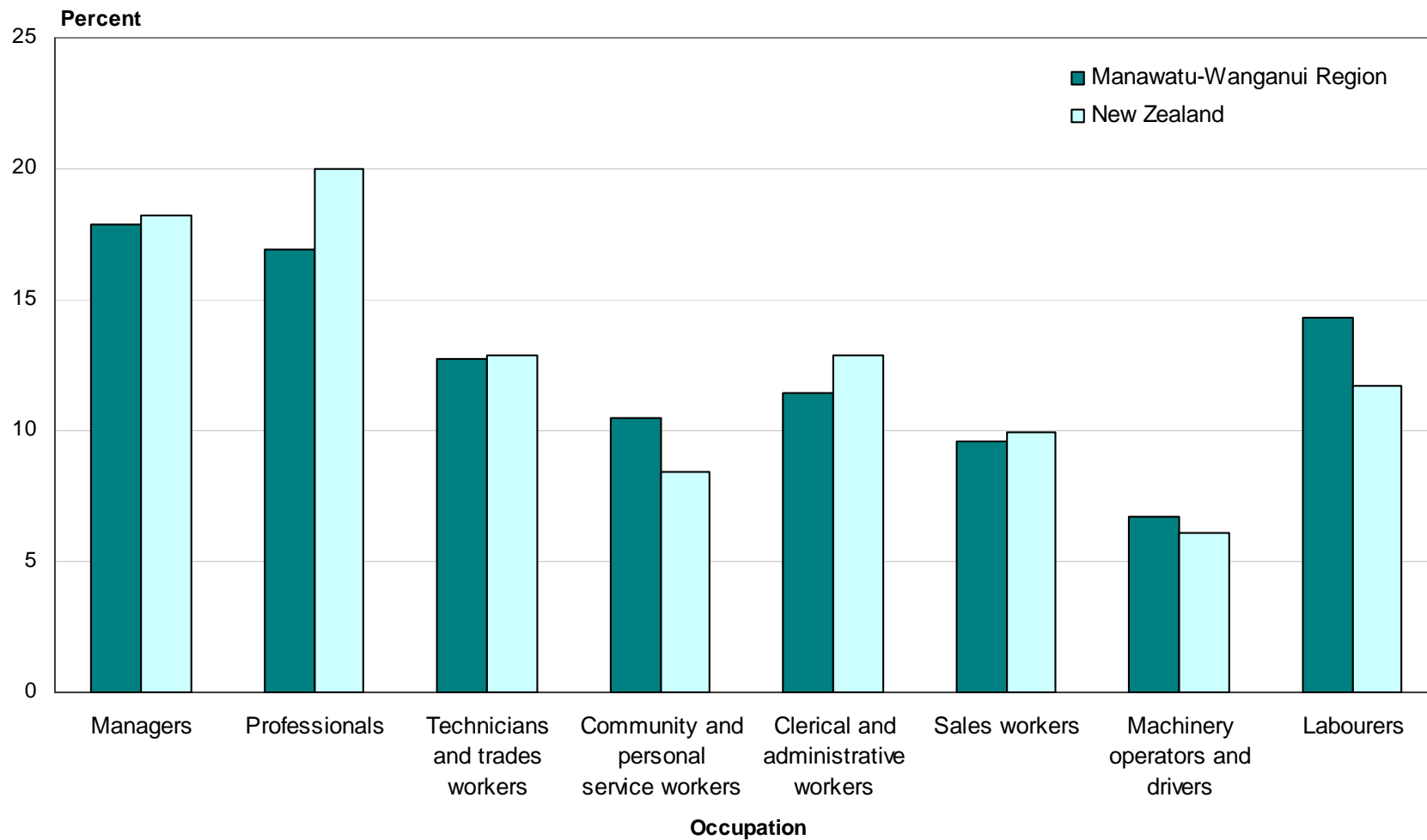
Religious Affiliation (percent)

Manawatu-Wanganui Region and New Zealand, 2006 Census

	Region	NZ
Christian (not including Māori Christian)	60.6	58.0
No Religion	36.6	37.1
Māori Christian	2.7	1.9
Hindu	0.6	1.8
Buddhist	0.7	1.5
Islam/Muslim	0.5	1.0
Other Religions	0.5	0.7
Spiritualism and New Age Religions	0.6	0.6
Judaism/Jewish	0.1	0.2

Occupation (ANZSCO)

Manawatu-Wanganui Region and New Zealand, 2006 Census



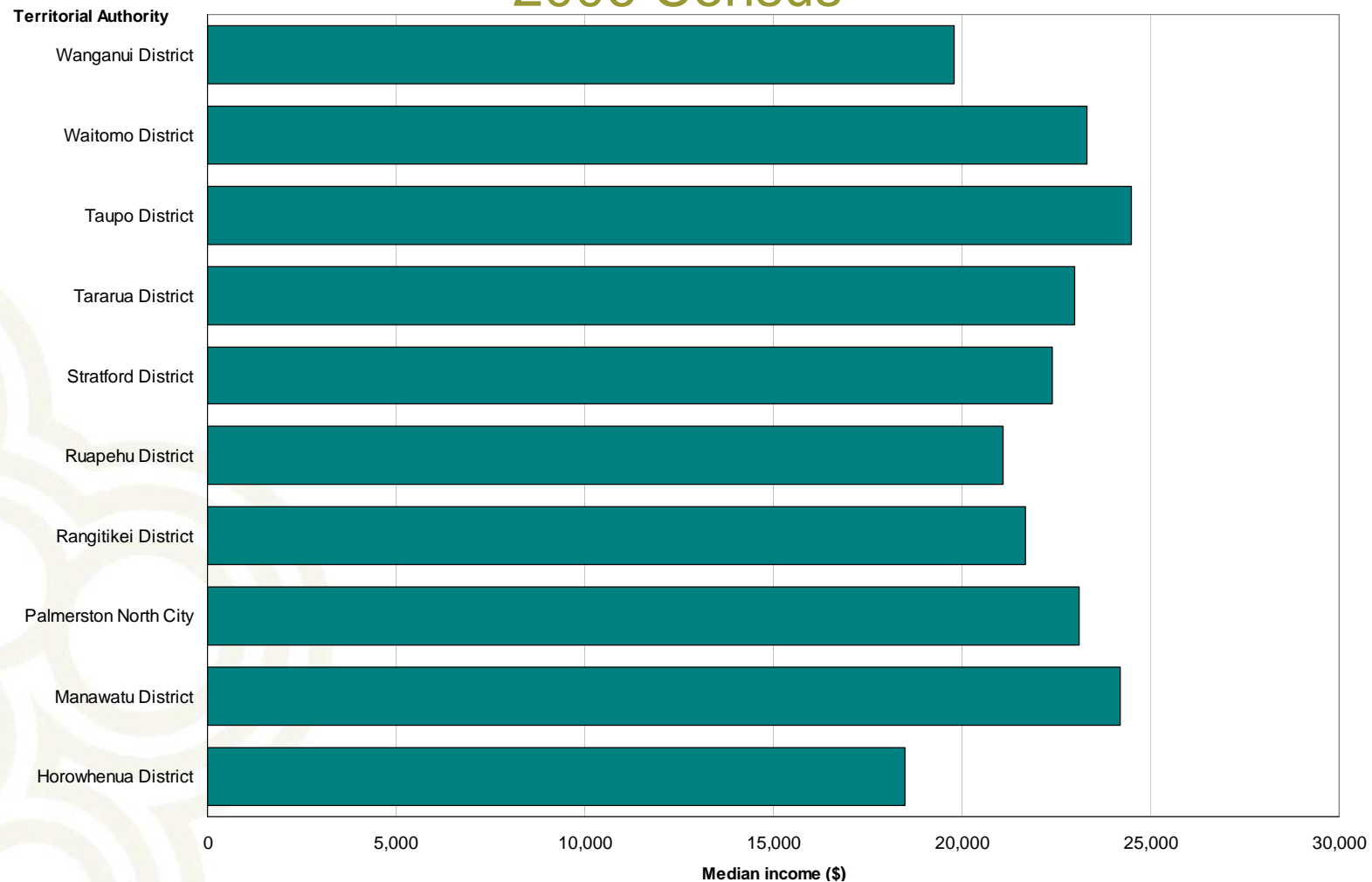
Unpaid Activities

Manawatu-Wanganui Region and New Zealand, 2006 Census

	Region	NZ
Helping someone who is ill or has a disability who does not live in own household	10.1	9.1
Household work for own household	85.6	86.1
Looking after a child who does not live in own household	17.8	16.2
Looking after a child who is a member of own household	31.1	31.6
Looking after a member of own household who is ill or has a disability	8.5	7.8
No activities	11.6	11.3
Other helping or voluntary work	17.2	15.4

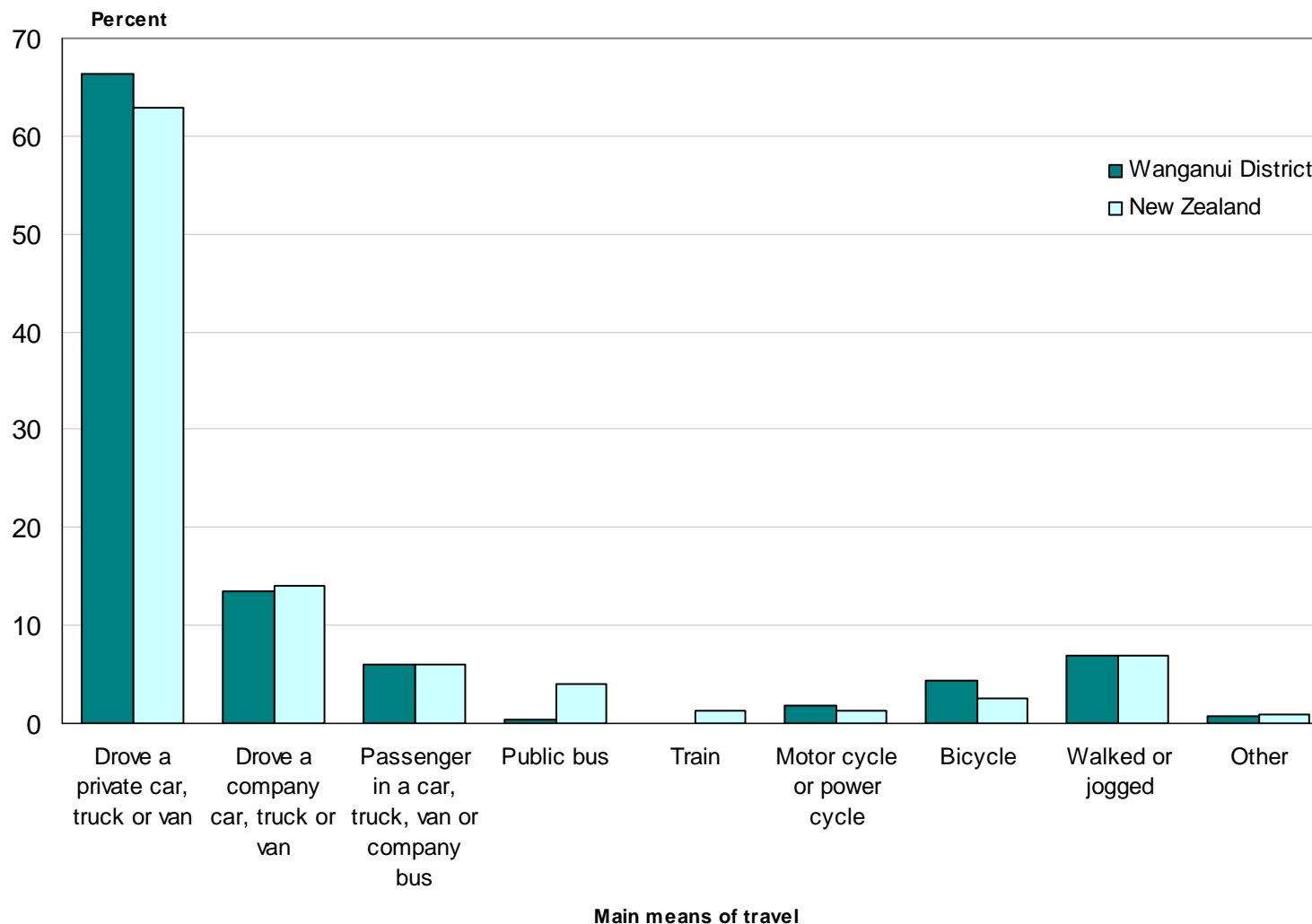
Median Personal Income

Territorial Authorities in Manawatu-Wanganui Region 2006 Census



Main Means of Travel to Work

Wanganui District and New Zealand, 2006 Census



Private occupied dwellings

New Zealand 1,471,746

- 8.2 percent increase from 2001

Manawatu-Wanganui Region 84,768

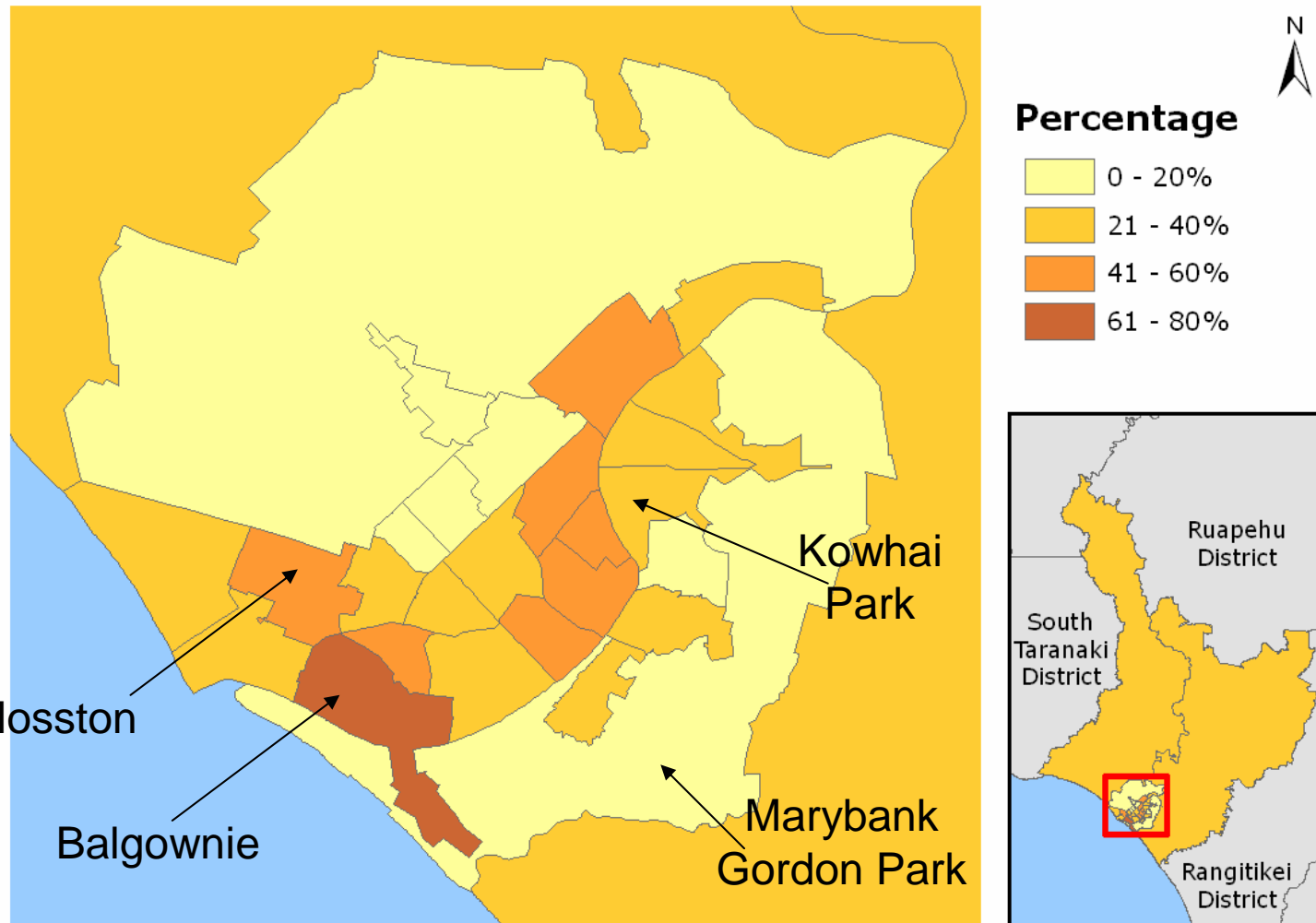
- 3.5 percent increase from 2001

Wanganui District 17,049

- 2.1 percent increase from 2001

Dwellings Not Owned by Usual Resident(s)

Wanganui District (Area Unit), 2006 Census



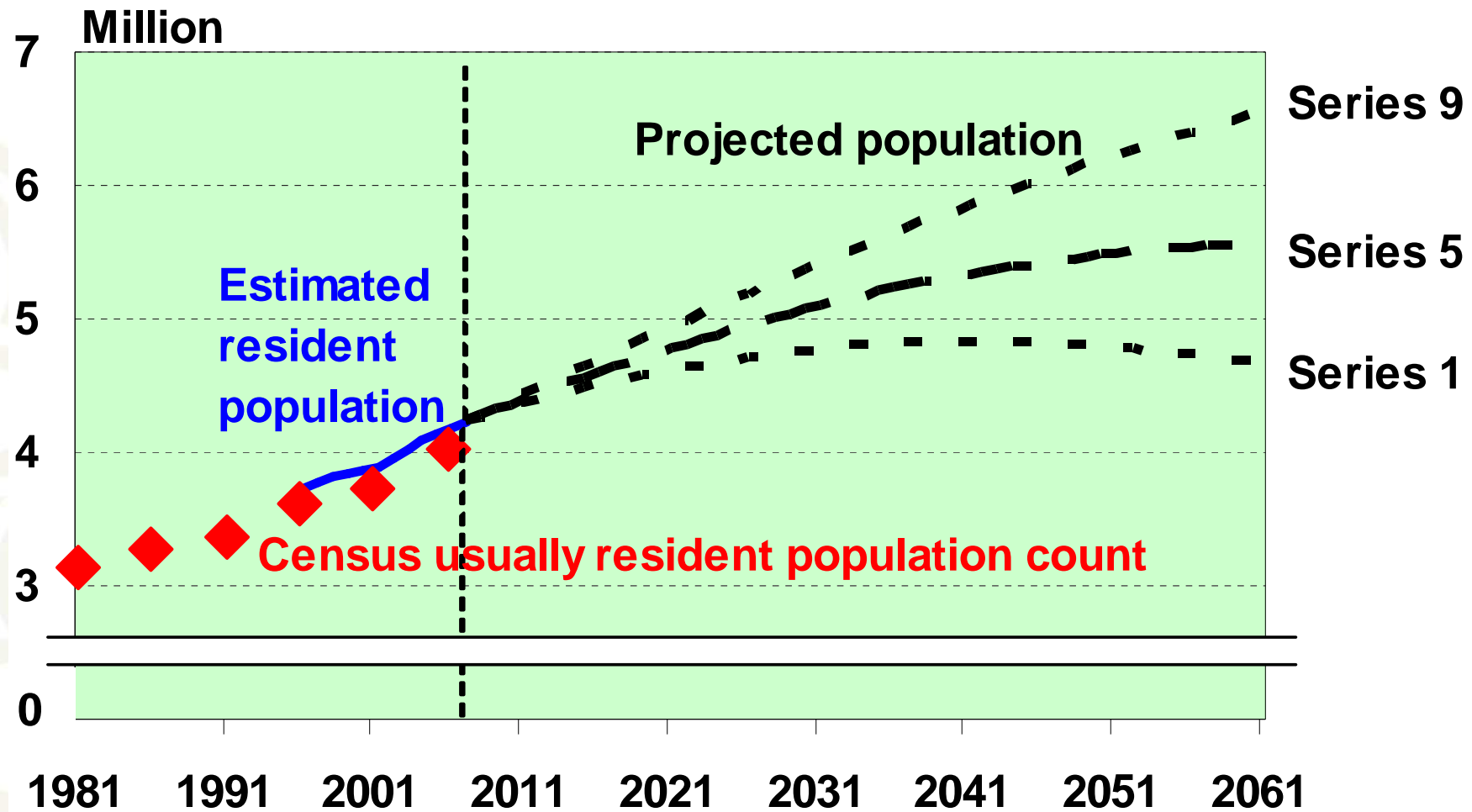
Population estimates and projections

A decorative graphic in the bottom-left corner consisting of several overlapping, light-colored circles of varying sizes, creating a pattern that resembles a stylized map or data visualization.

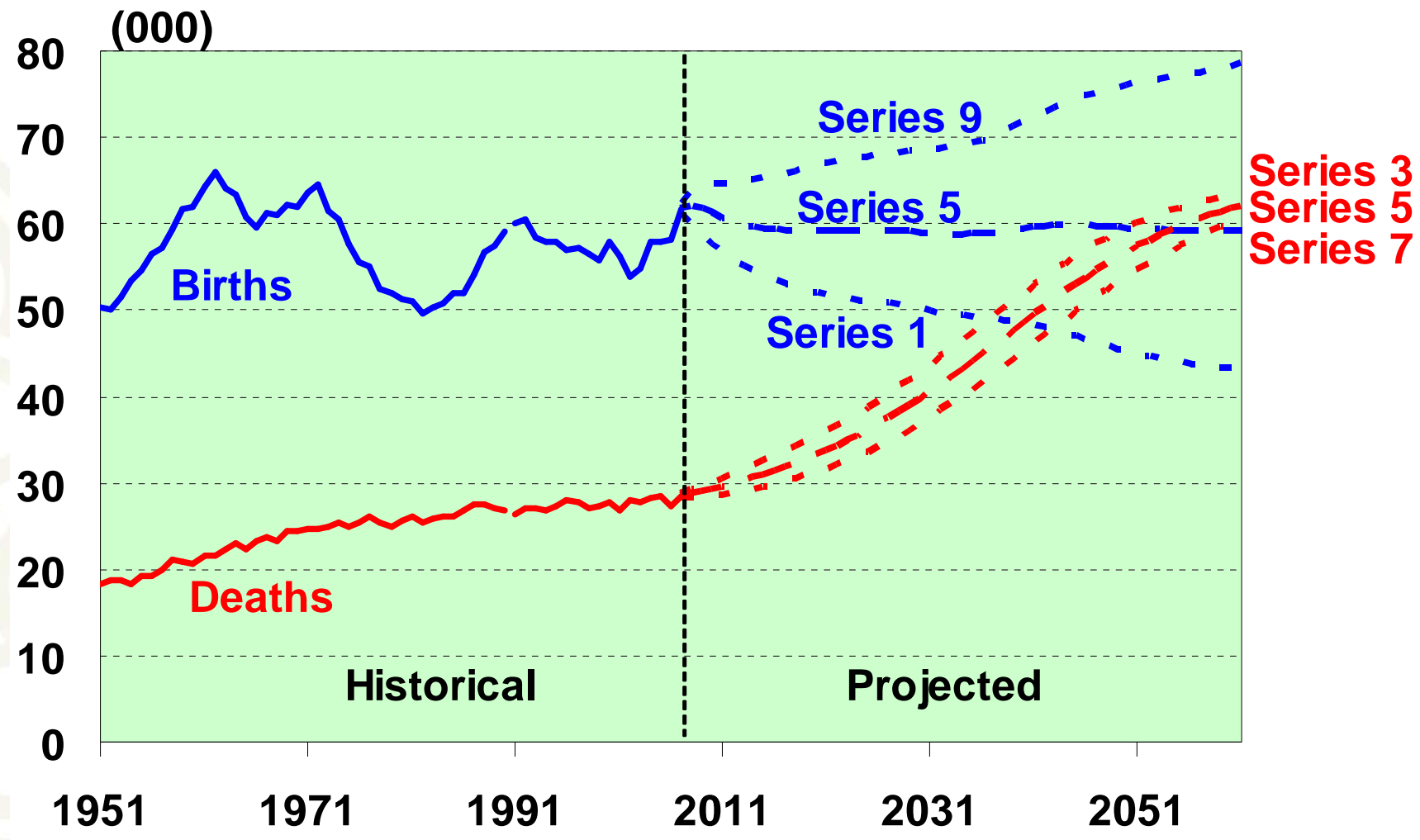
Estimated resident population

- The best measure of who lives in an area
- A census base (excluding overseas visitors) adjusted for:
 - o Net census undercount
 - o Residents temporarily overseas
 - o Births, deaths and net migration to 30 June 2006
- Limited variables (age, sex, ethnicity)
- Provides base for population projections

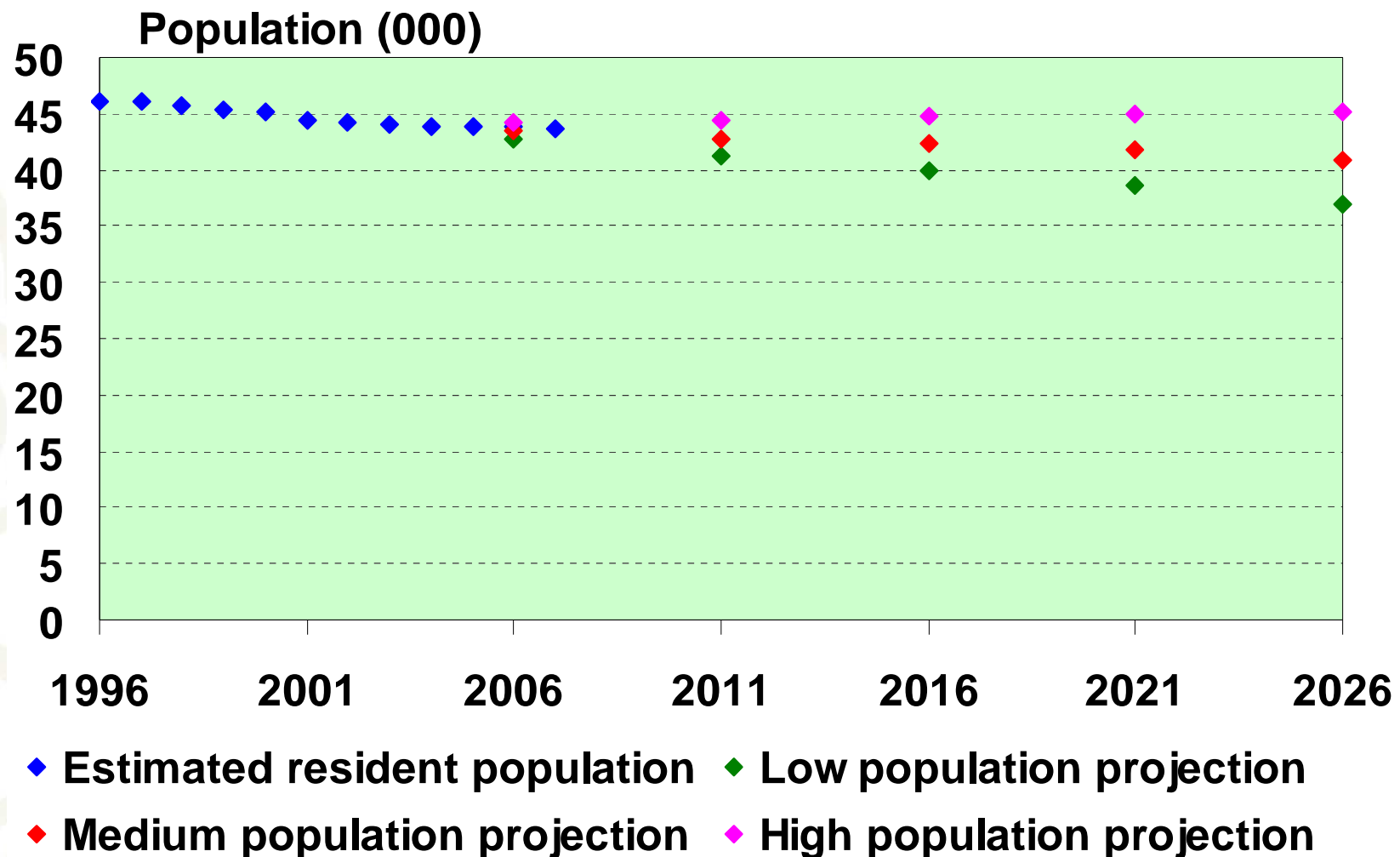
New Zealand population



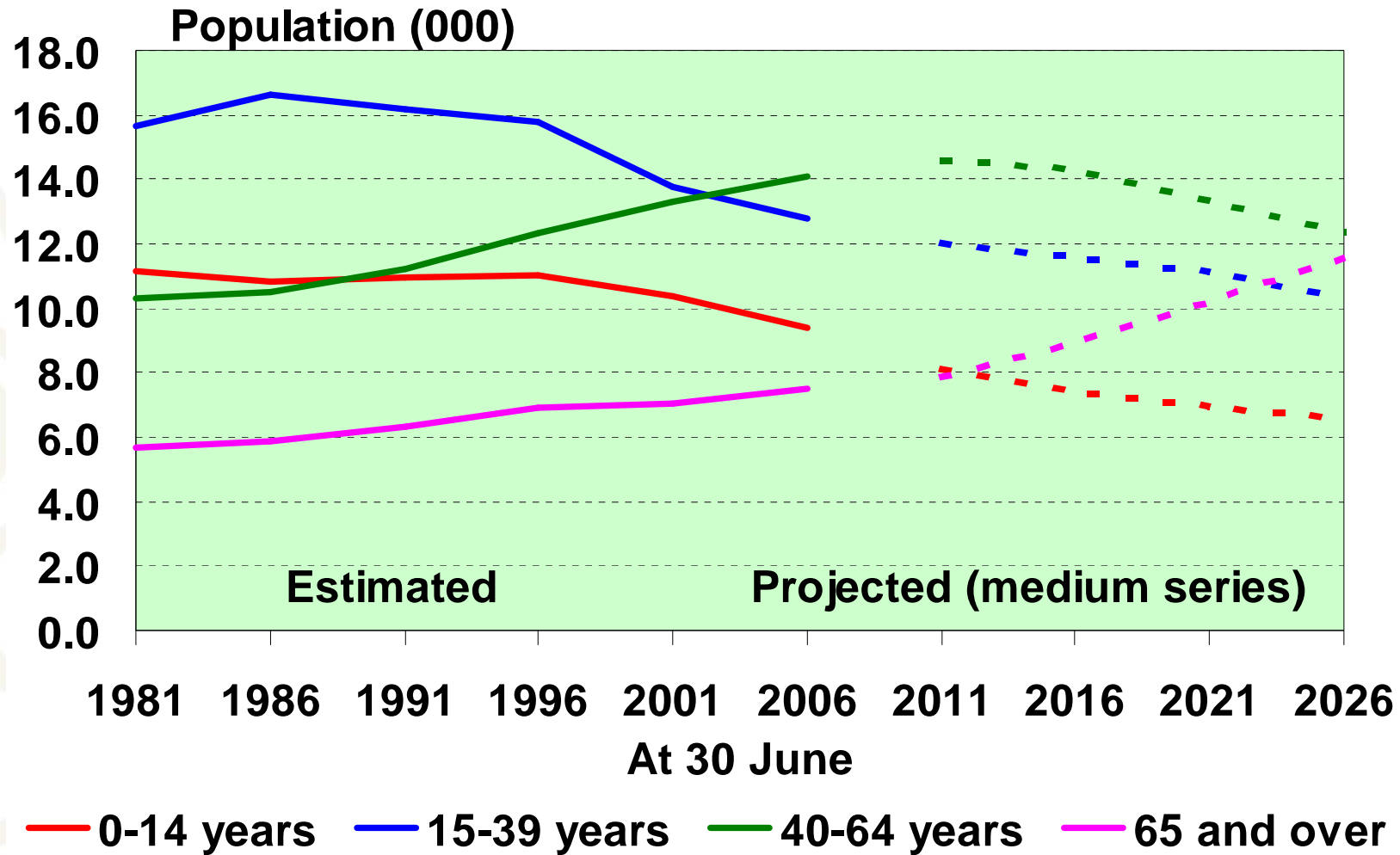
New Zealand shrinking natural increase



Population of Wanganui District



Wanganui District: growth in older ages



Key release dates: 2006-base population estimates

21 August 2007: first 2006-base population estimates

June 2006 data on Table Builder

- o National and subnational estimates June 2006
- o Area unit estimates June 2006 (NEW)
- o National estimates June 2007 Quarter

23 October 2007

- o Subnational estimates June 2007

December 2007

- o Area unit estimates June 2007 (NEW)

Population Projections – release dates

- National population projections: 24 October 2007
- Subnational population projections: 3 December 2007
- National ethnic projections: 2 April 2008
- National labour force projections: 6 May 2008
- Area unit population projections: mid 2008
- Family and household projections: 2008/09