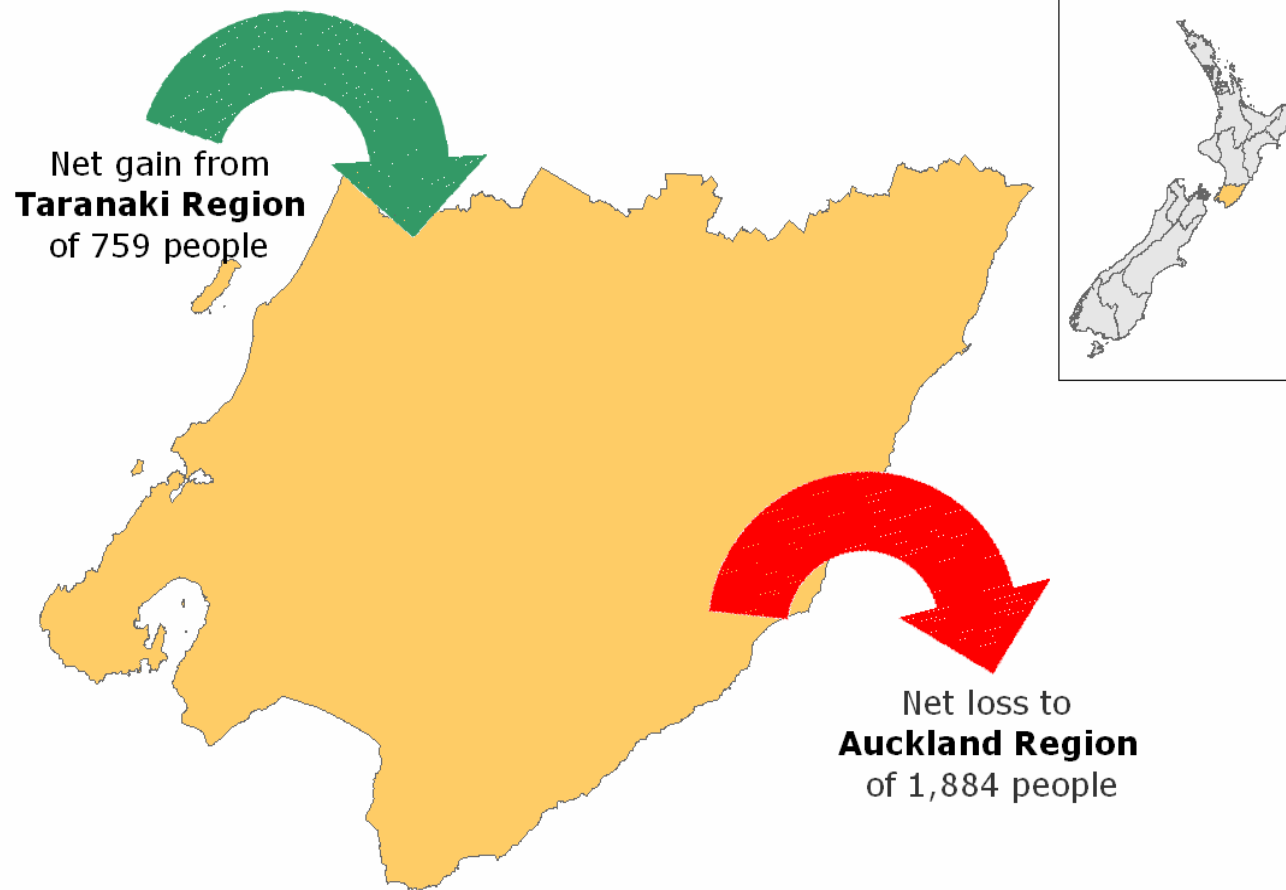


What we look like locally



Net Migration for Wellington Region

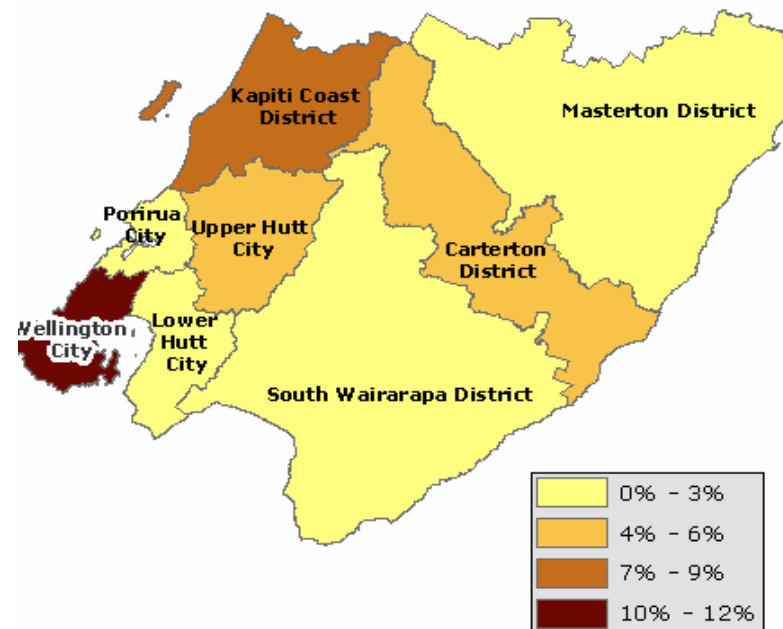


Usually Resident Population

Percentage change from 2001

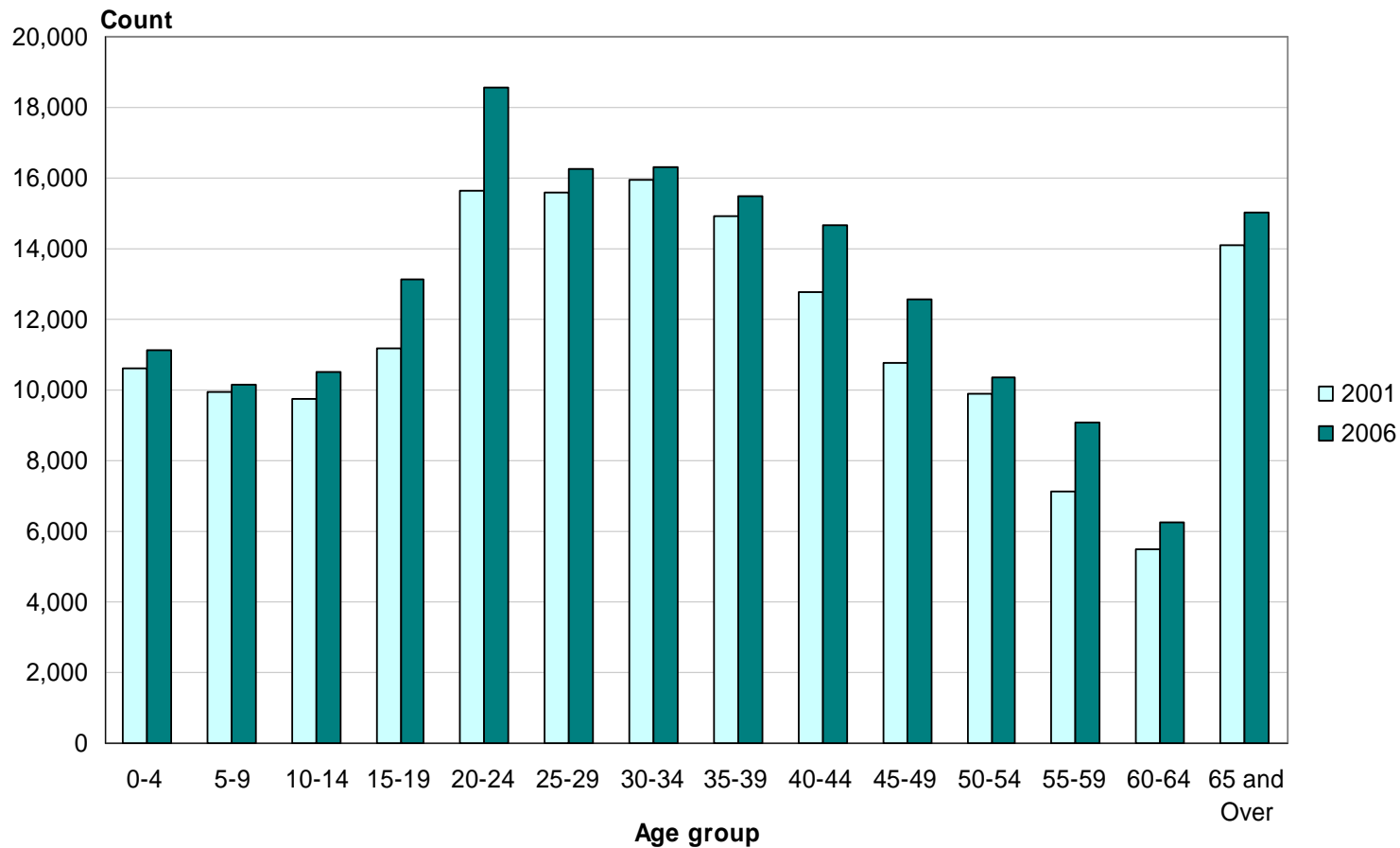
o Wellington Region
448,959

o Wellington City
179,466



Age (5 years)

Wellington City, 2001 and 2006 Censuses



Median age for Wellington City 32.5 years

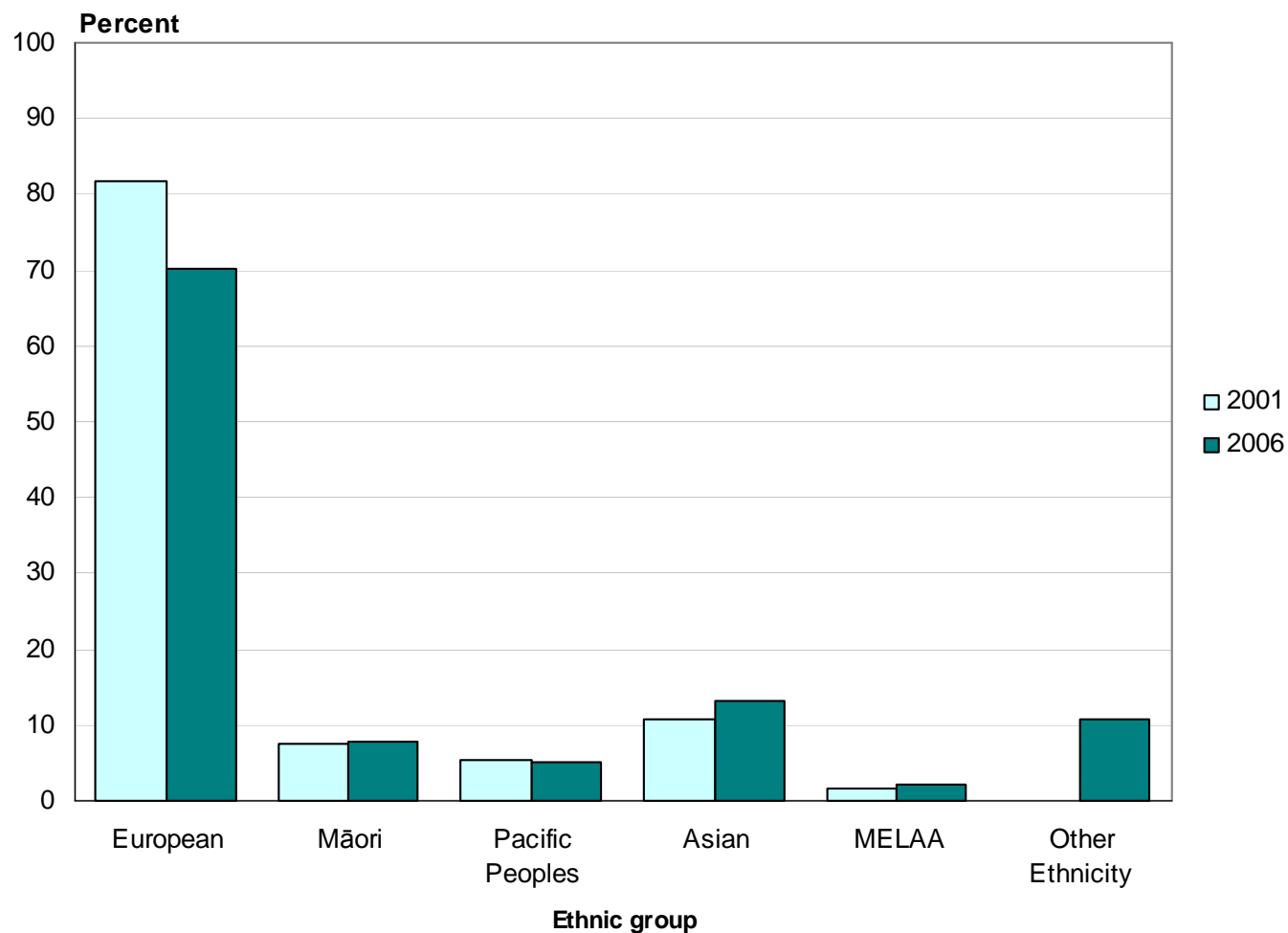
Who needs a holiday programme?

- Number of children under 15 years
 - o Wellington Region 92,445
 - o Wellington City 31,773

	0 - 4 Years	5 - 9 Years	10 - 14 Years	Total
Churton	504	492	504	1,503
Newlands North	417	381	339	1,140
Strathmore Park	357	354	366	1,077
Miramar North	345	333	345	1,023
Tawa Central	303	330	375	1,008
Linden	270	261	336	870
Karori Park	327	252	279	858

Ethnic Group

Wellington City, 2001 and 2006 Censuses



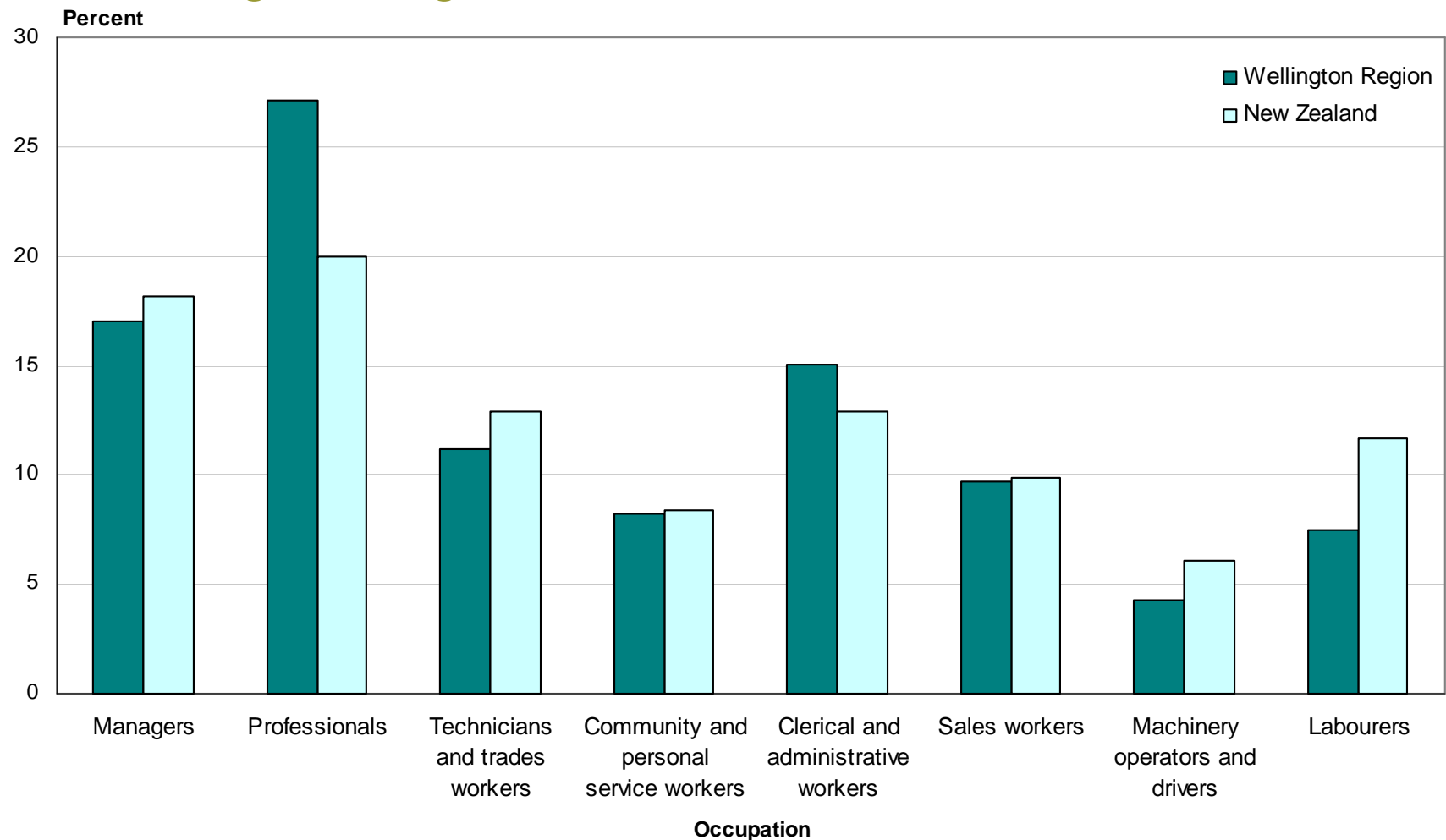
Religious Affiliation (percent)

Wellington Region and New Zealand, 2006 Census

	Region	NZ
Christian (not including Māori Christian)	56.9	58.0
No Religion	38.4	37.1
Māori Christian	1.2	1.9
Hindu	2.0	1.8
Buddhist	1.6	1.5
Islam/Muslim	0.9	1.0
Other Religions	0.5	0.7
Spiritualism and New Age Religions	0.6	0.6
Judaism/Jewish	0.3	0.2

Occupation (ANZSCO)

Wellington Region and New Zealand, 2006 Census



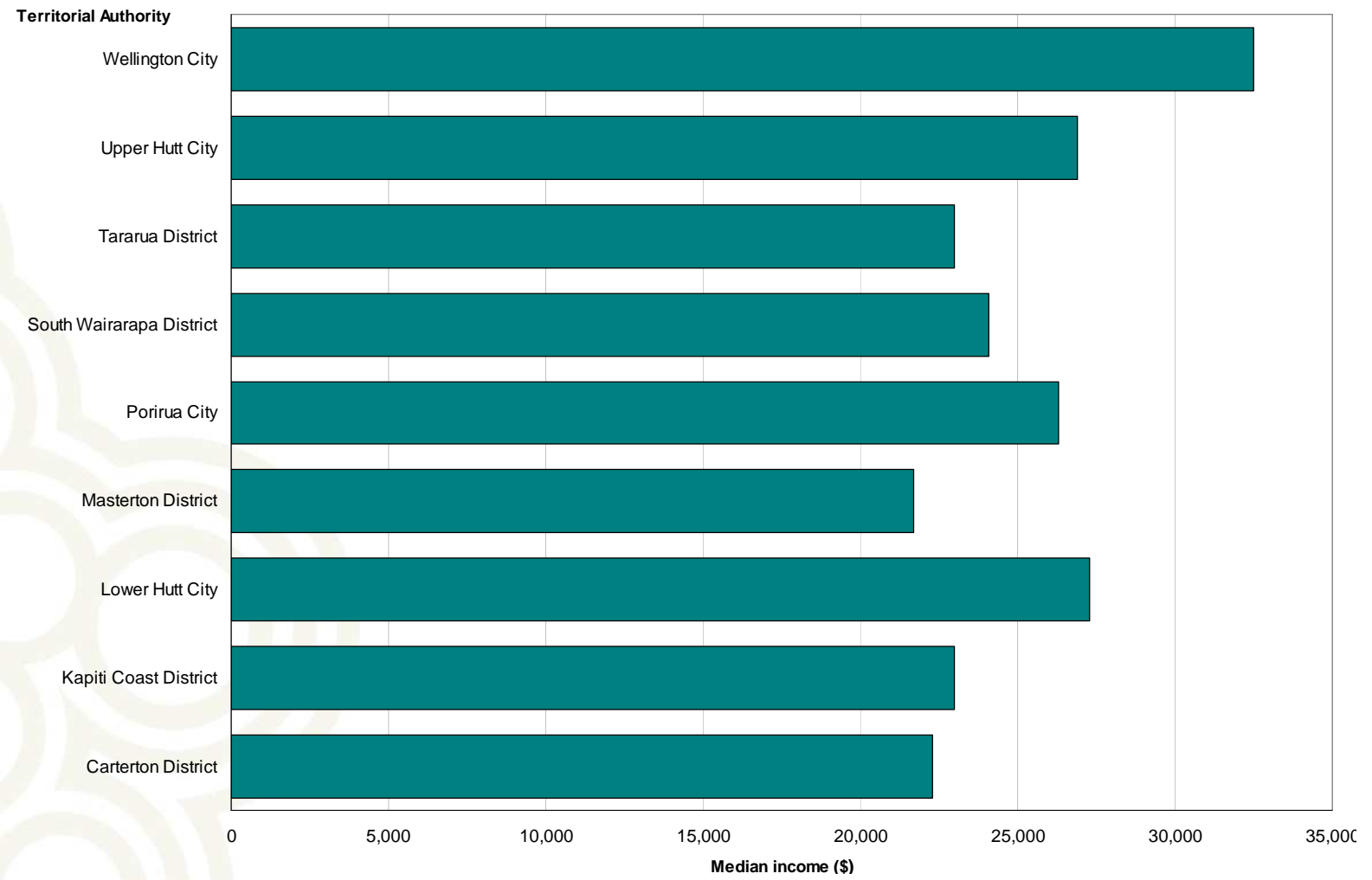
Unpaid Activities

Wellington Region and New Zealand, 2006 Census

	Region	NZ
Helping someone who is ill or has a disability who does not live in own household	9.1	9.1
Household work for own household	87.9	86.1
Looking after a child who does not live in own household	16.6	16.2
Looking after a child who is a member of own household	31.1	31.6
Looking after a member of own household who is ill or has a disability	7.5	7.8
No activities	9.7	11.3
Other helping or voluntary work	16.2	15.4

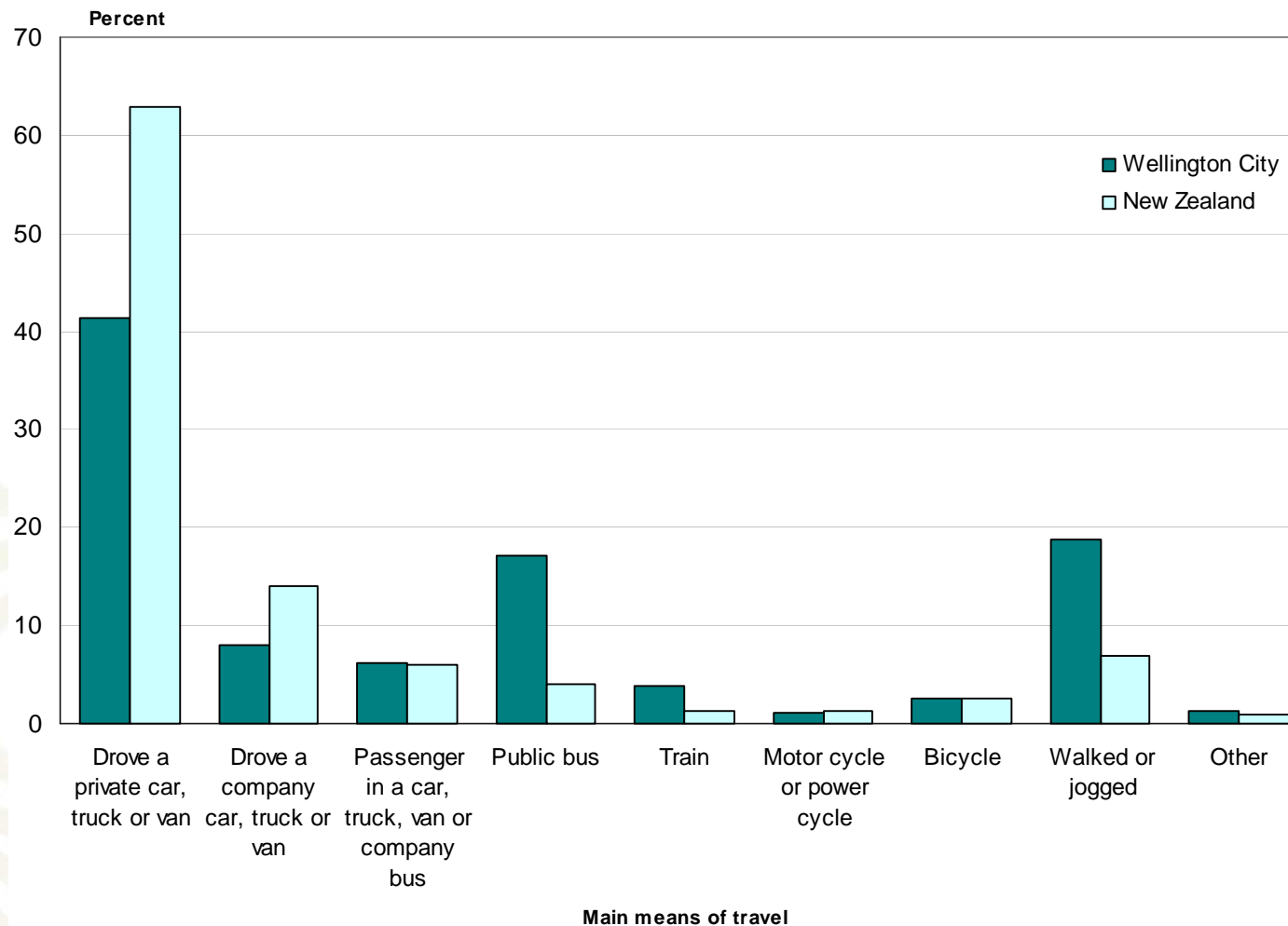
Median Personal Income

Territorial Authorities in Wellington Region, 2006 Census



Main Means of Travel to Work

Wellington City and New Zealand, 2006 Census



Private occupied dwellings

New Zealand 1,471,746

- 8.2 percent increase from 2001

Wellington Region 168,846

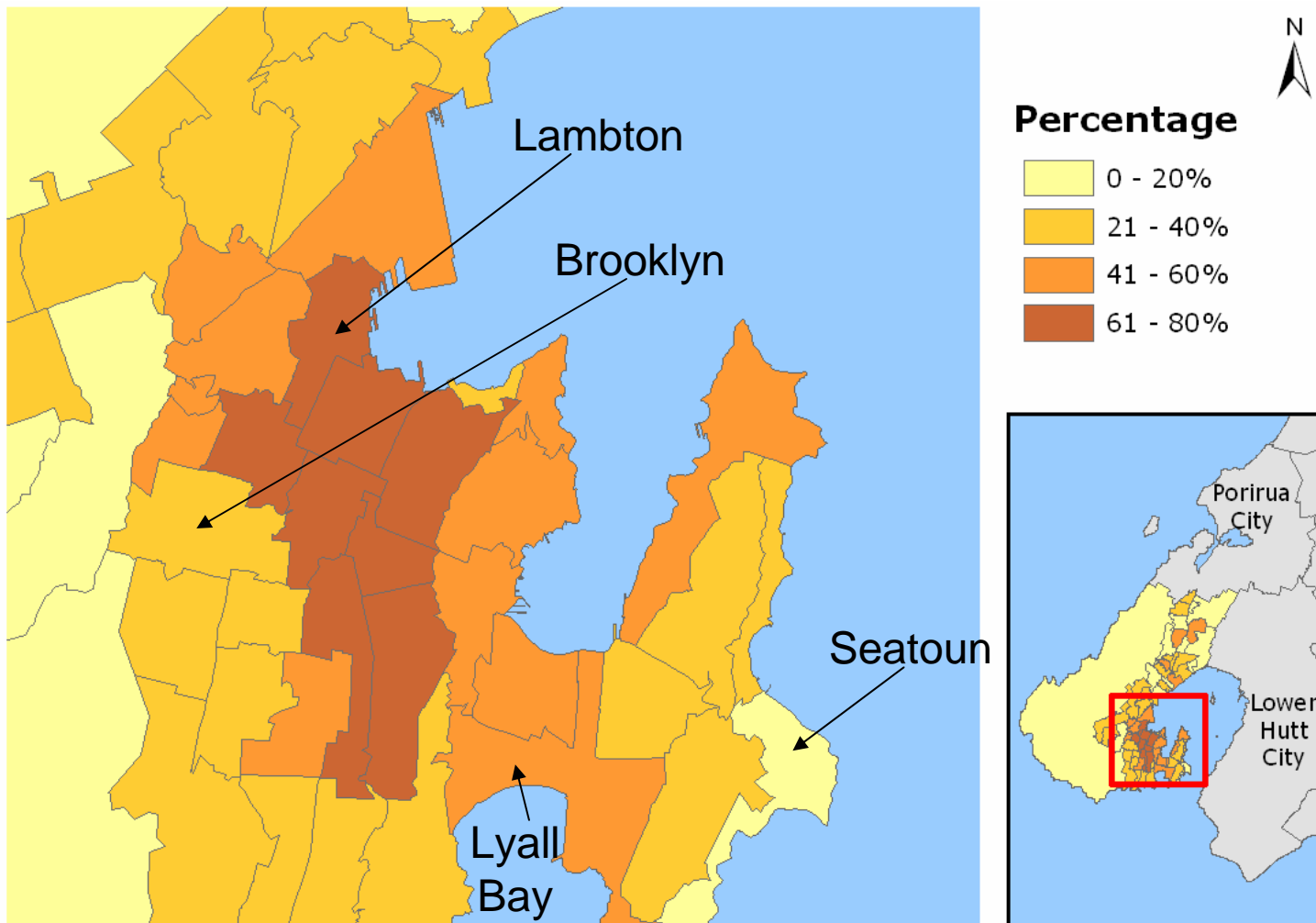
- 7.3 percent increase from 2001

Wellington City 68,706

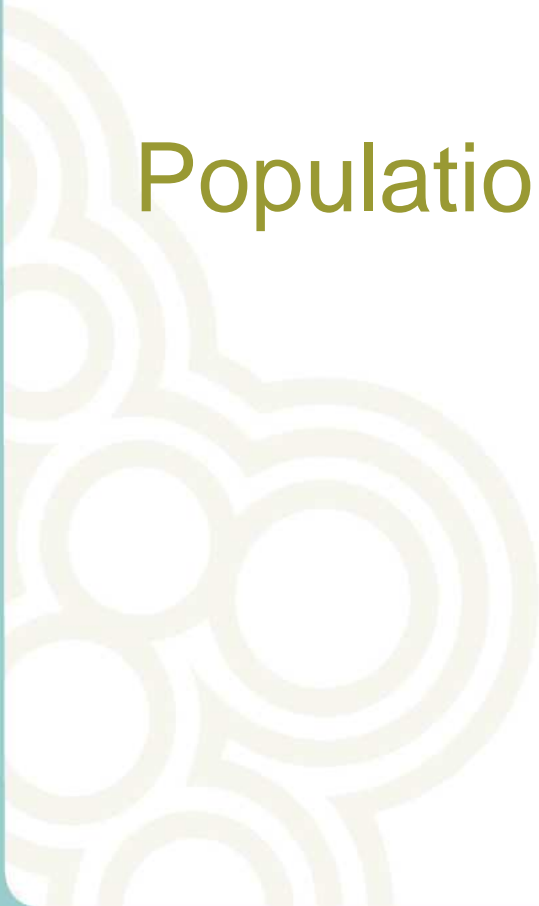
- 10.0 percent increase from 2001

Dwellings Not Owned by Usual Resident(s)

Wellington City (Area Unit), 2006 Census



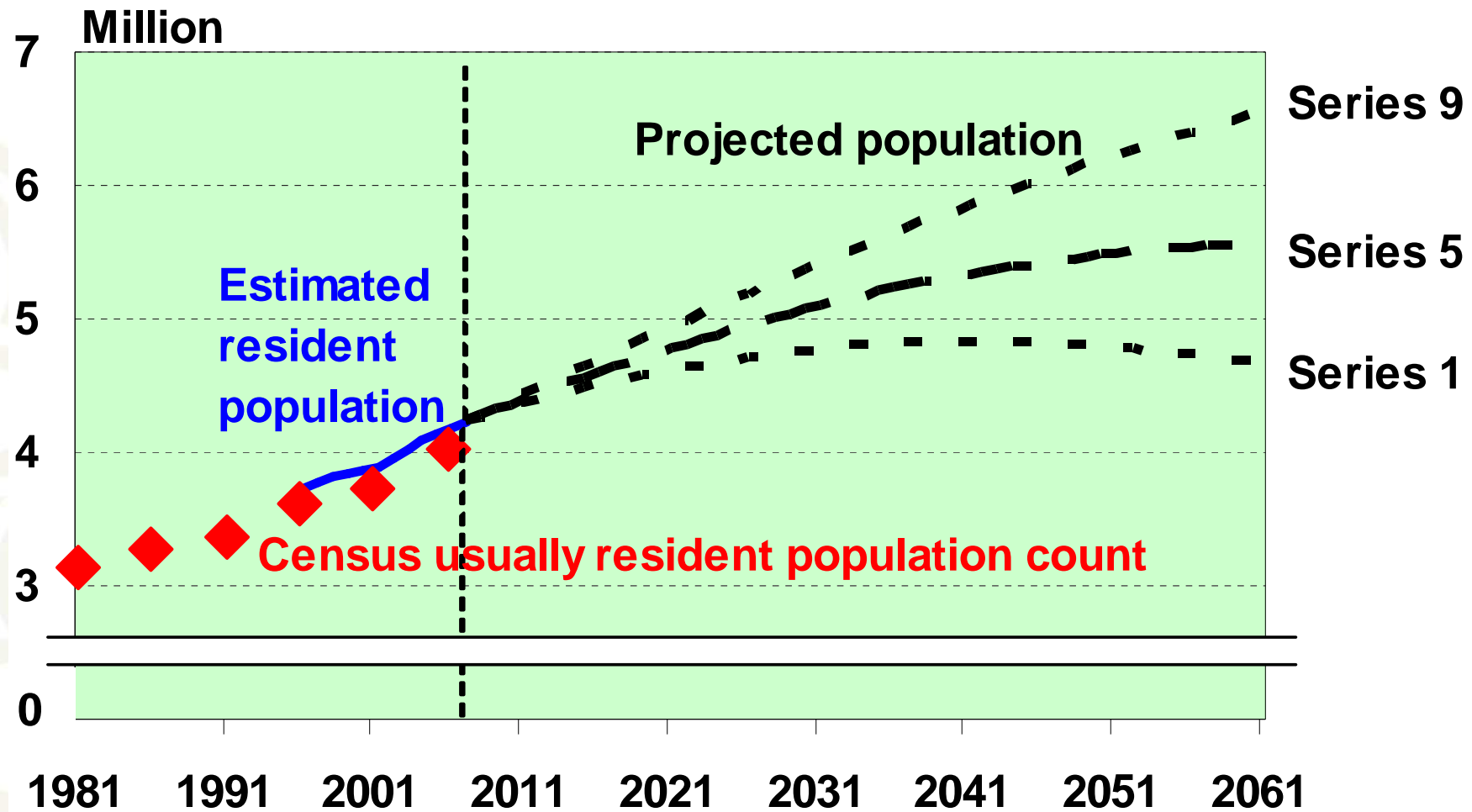
Population estimates and projections



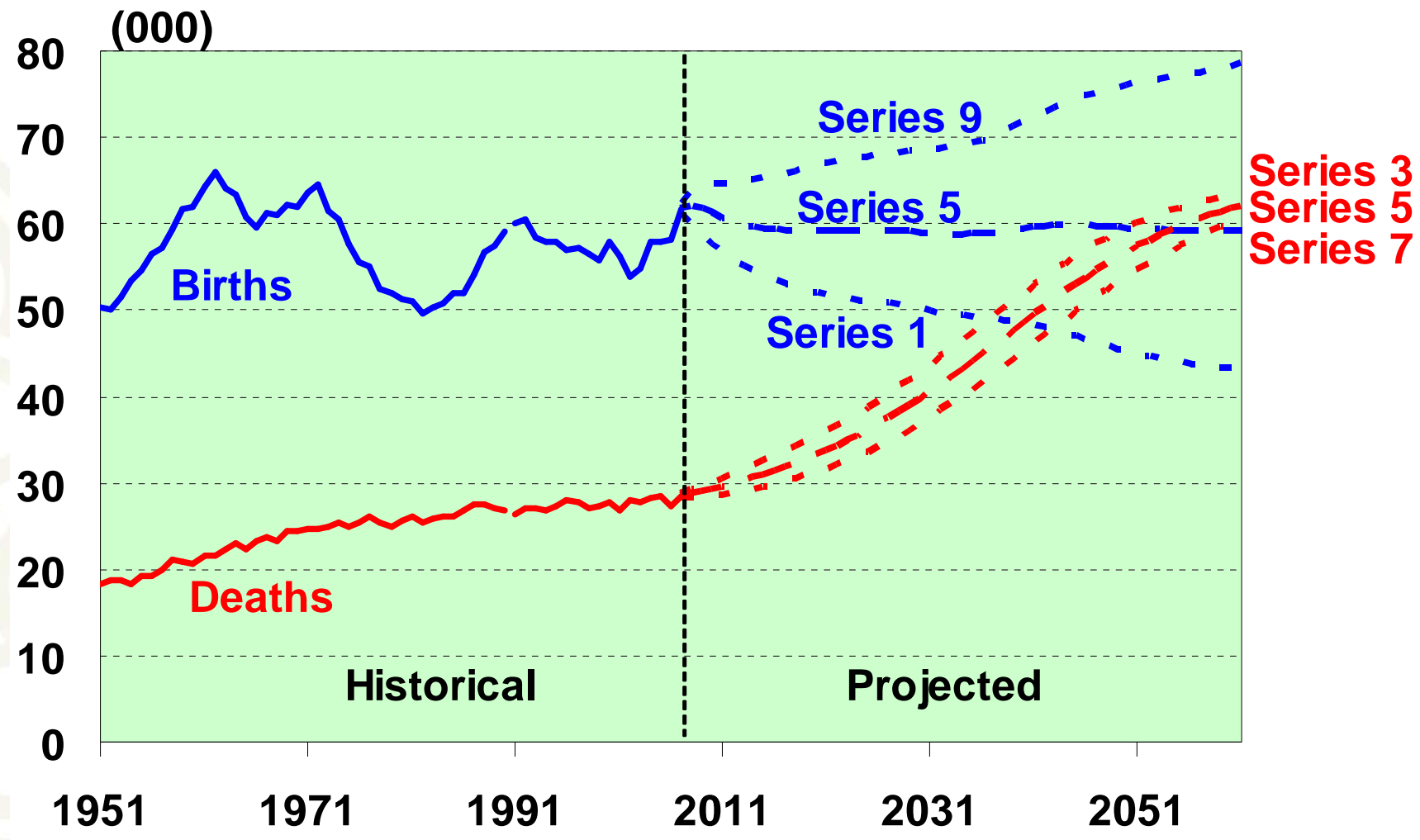
Estimated resident population

- The best measure of who lives in an area
- A census base (excluding overseas visitors) adjusted for:
 - o Net census undercount
 - o Residents temporarily overseas
 - o Births, deaths and net migration to 30 June 2006
- Limited variables (age, sex, ethnicity)
- Provides base for population projections

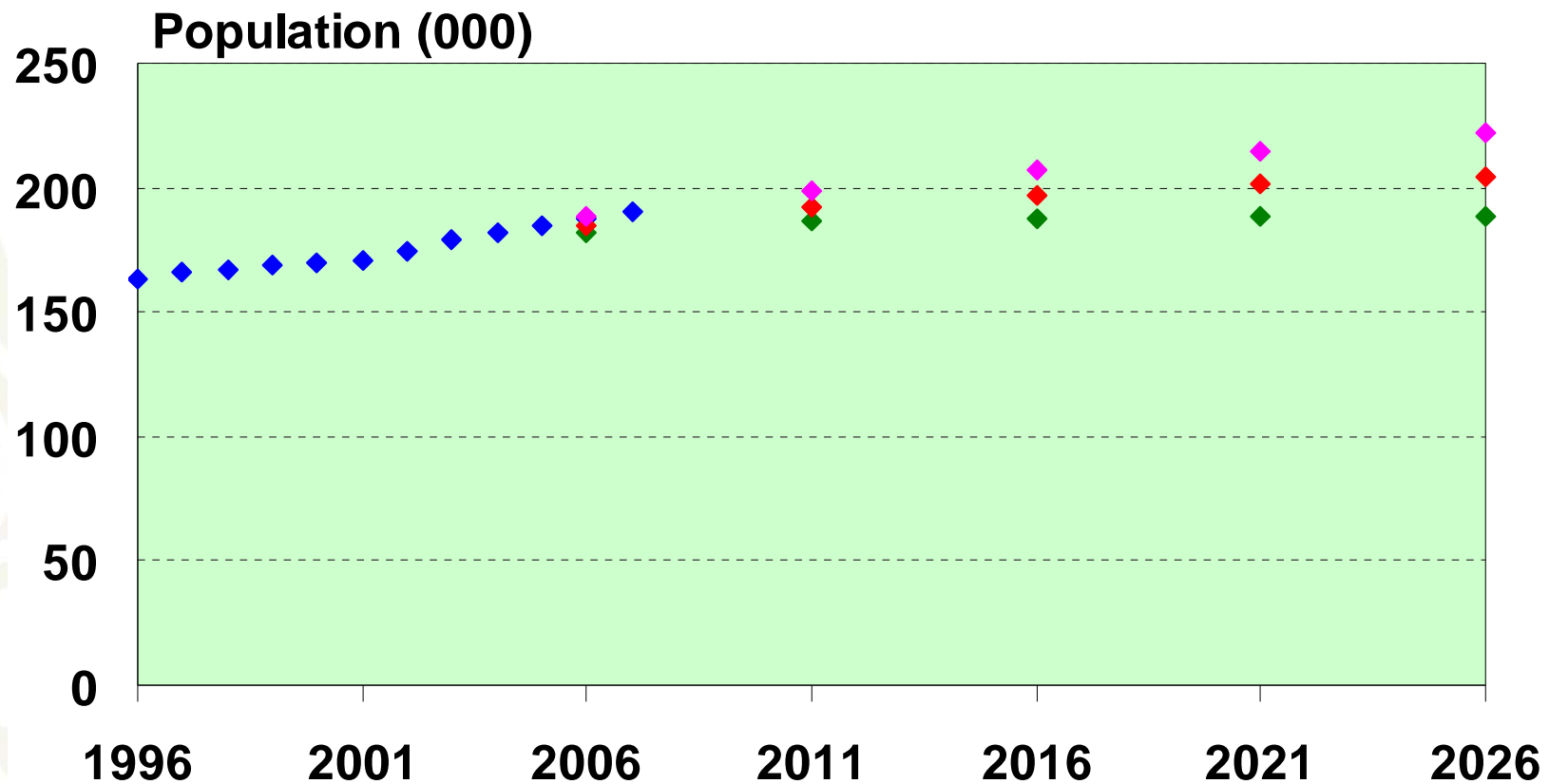
New Zealand population



New Zealand shrinking natural increase

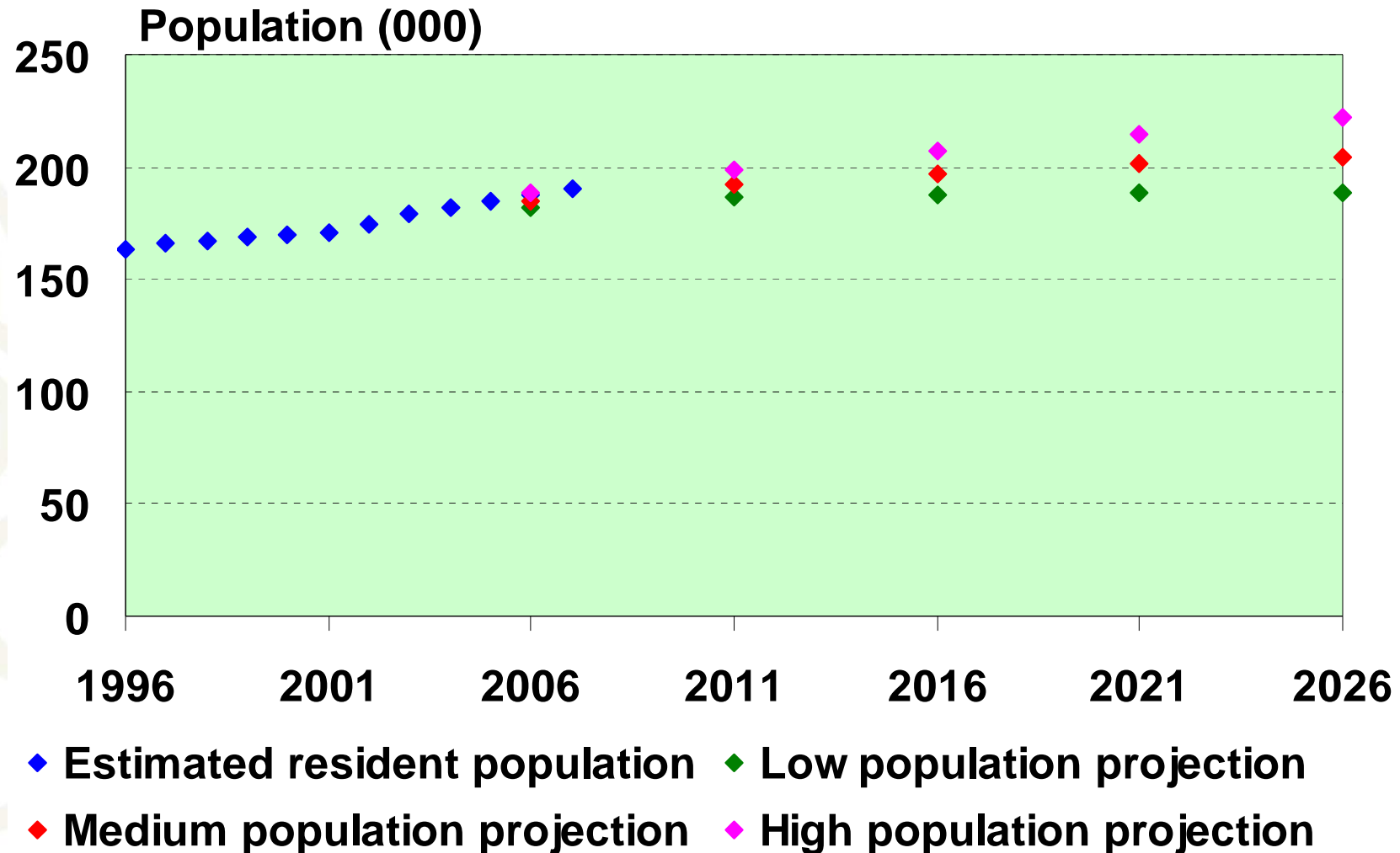


Population of Wellington City



- ◆ Estimated resident population
- ◆ Low population projection
- ◆ Medium population projection
- ◆ High population projection

Wellington City: growth in older ages



Key release dates: 2006-base population estimates

21 August 2007: first 2006-base population estimates

June 2006 data on Table Builder

- o National and subnational estimates June 2006
- o Area unit estimates June 2006 (NEW)
- o National estimates June 2007 Quarter

23 October 2007

- o Subnational estimates June 2007

December 2007

- o Area unit estimates June 2007 (NEW)

Population Projections – release dates

- National population projections: 24 October 2007
- Subnational population projections: 3 December 2007
- National ethnic projections: 2 April 2008
- National labour force projections: 6 May 2008
- Area unit population projections: mid 2008
- Family and household projections: 2008/09