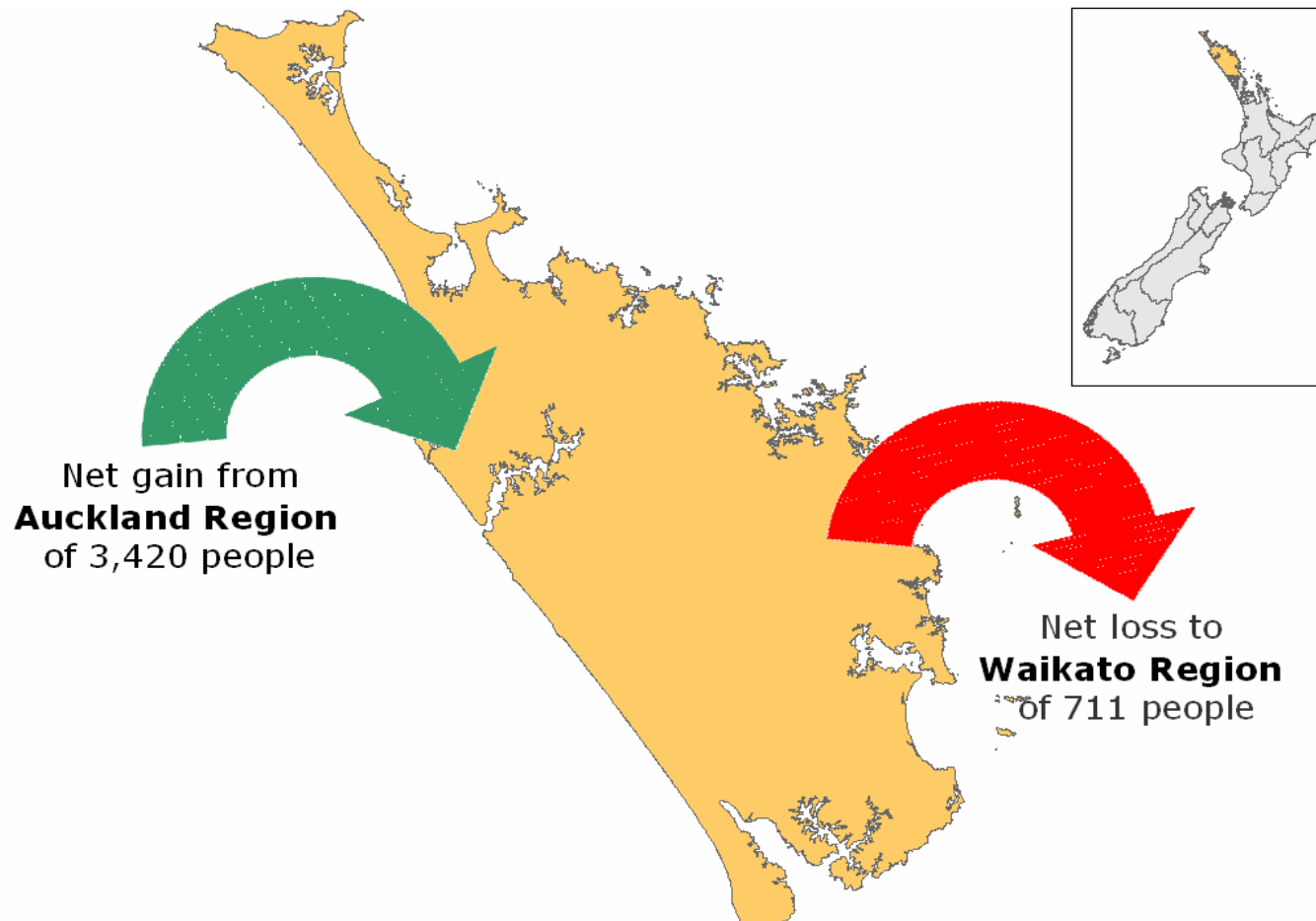


# What we look like locally



# Net Migration for Northland Region

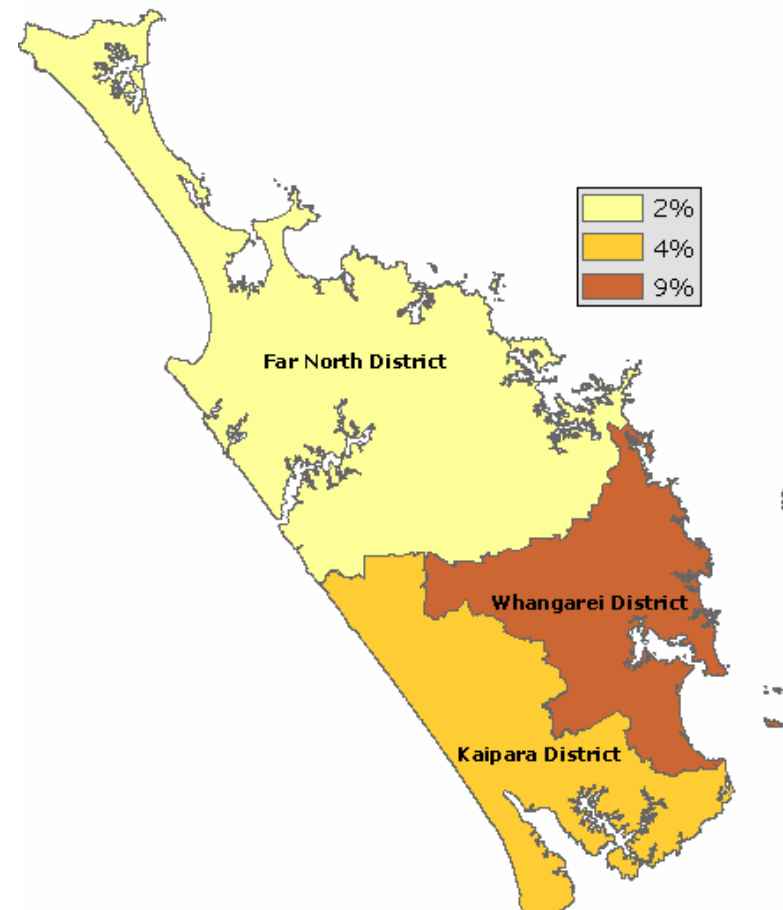


# Usually Resident Population

Percentage change from 2001

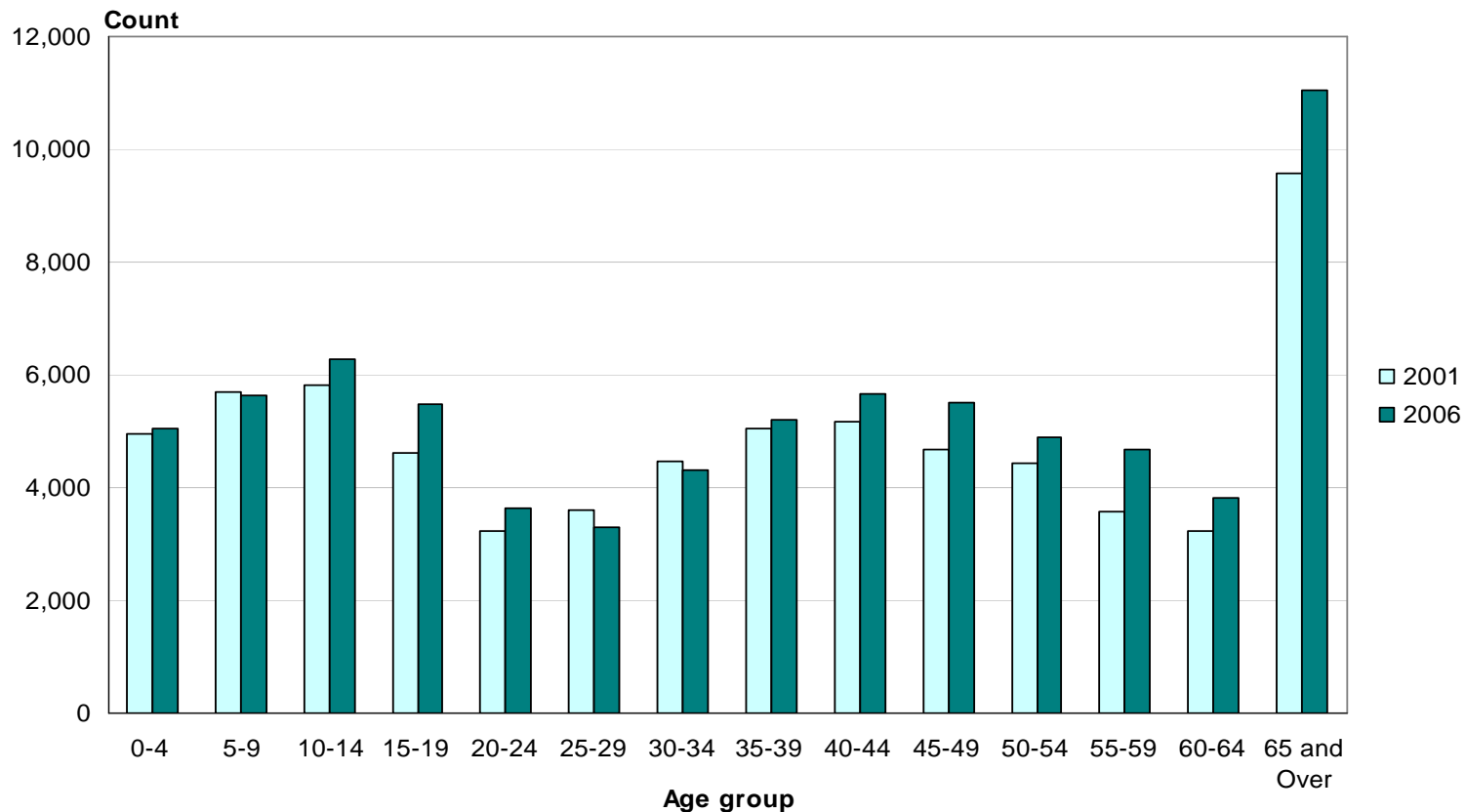
o Northland Region  
148,470

o Whangarei District  
74,463



# Age (5 years)

## Whangarei District, 2001 and 2006 Censuses



Median age for Whangarei District 37.8 years

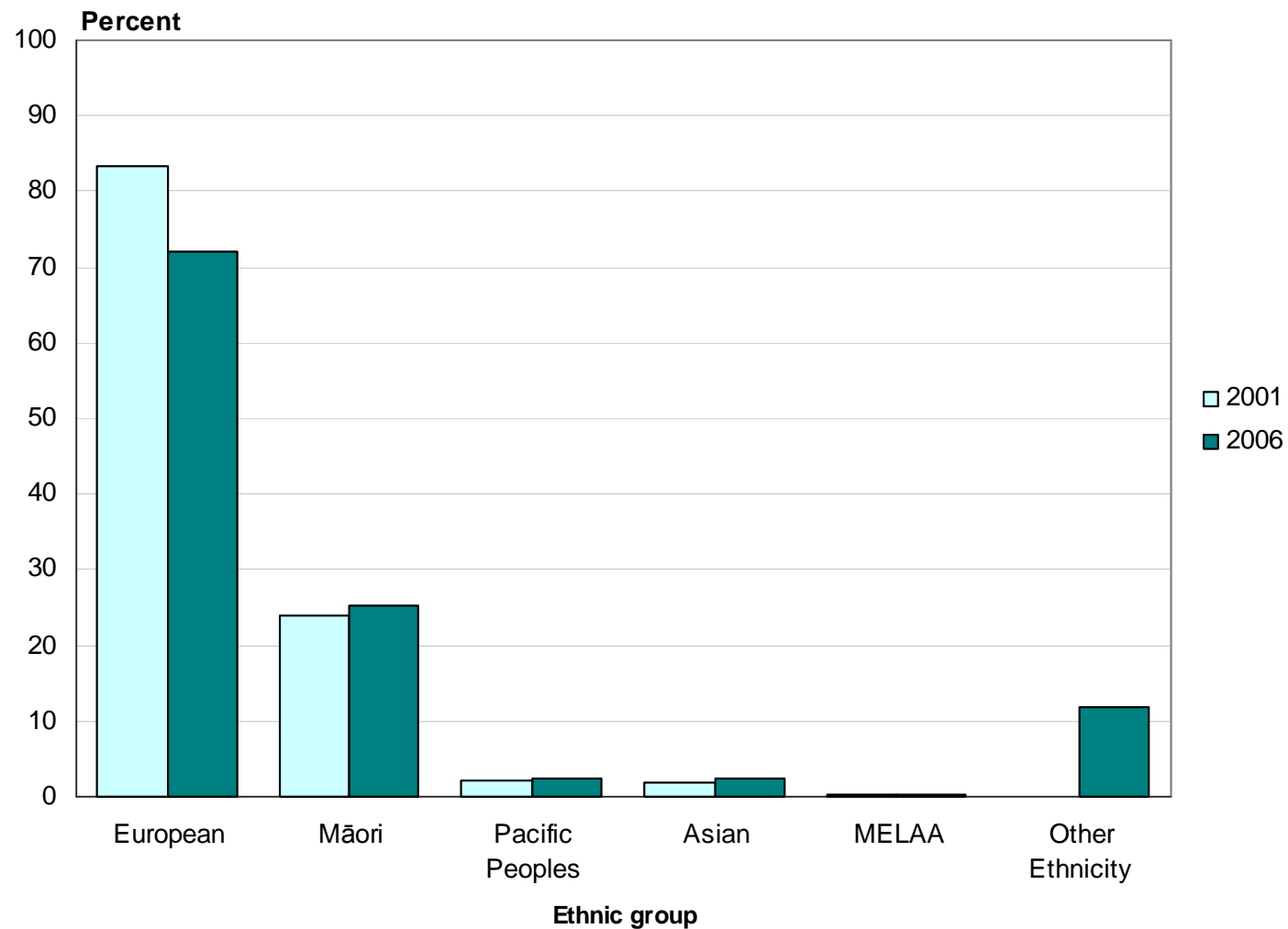
## Who needs a holiday programme?

- Number of children under 15 years
  - o Northland Region      34,779
  - o Whangarei District    16,953

	0 - 4 Years	5 - 9 Years	10 - 14 Years	Total
Opouteke-Tanekaha	309	405	489	1,203
Raumanga West	312	297	303	909
Tikipunga West	279	282	288	849
Punaruku-Kiripaka	267	282	285	834
Kamo East	258	276	276	810
Tikipunga East	264	273	258	798
Otangarei	237	261	267	765

# Ethnic Group

## Whangarei District, 2001 and 2006 Censuses



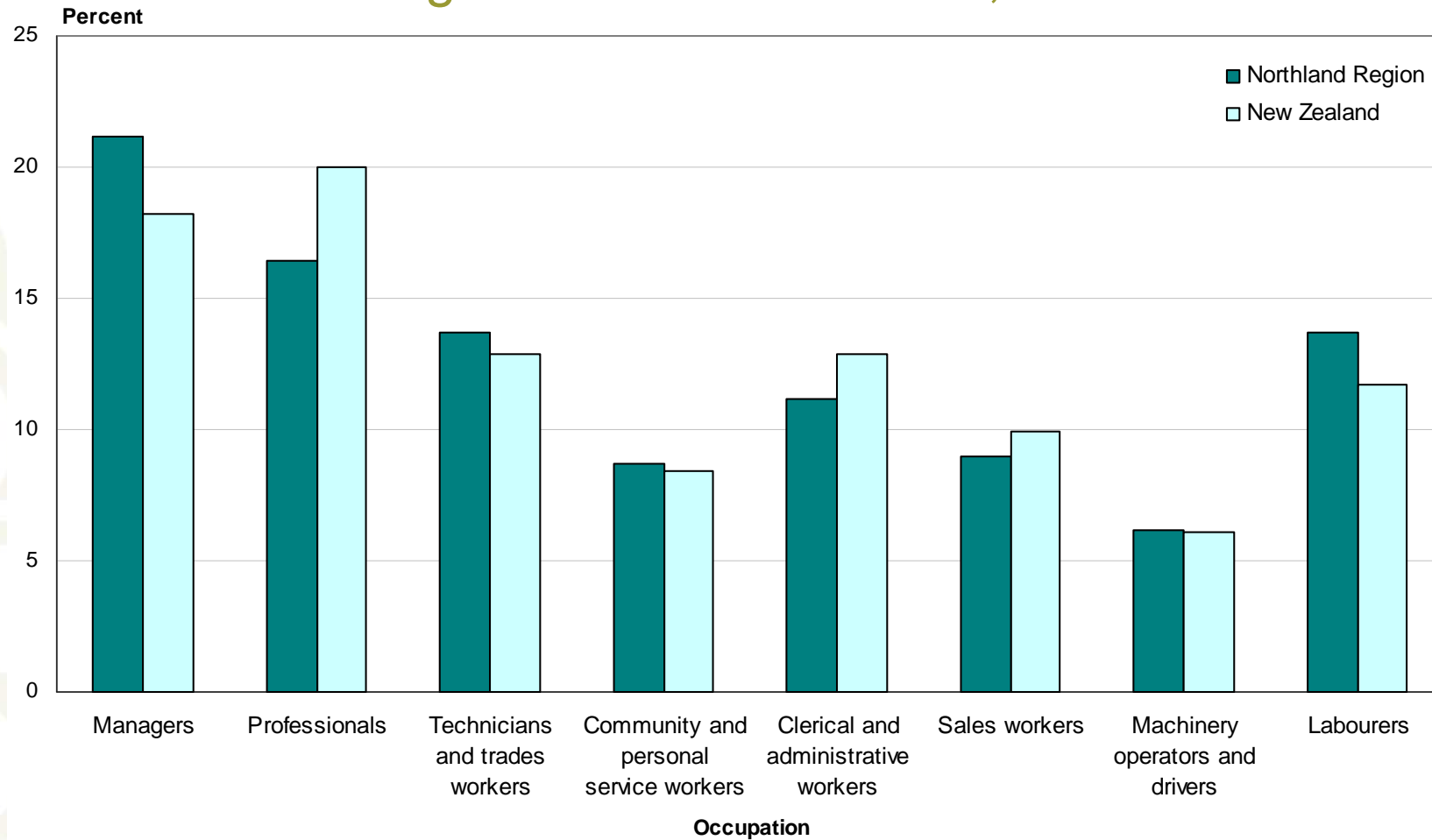
# Religious Affiliation (percent)

Northland Region and New Zealand, 2006 Census

	Region	NZ
Christian (not including Māori Christian)	58.4	58.0
No Religion	37.3	37.1
Māori Christian	4.7	1.9
Hindu	0.4	1.8
Buddhist	0.6	1.5
Islam/Muslim	0.2	1.0
Other Religions	0.6	0.7
Spiritualism and New Age Religions	0.6	0.6
Judaism/Jewish	0.1	0.2

# Occupation (ANZSCO)

## Northland Region and New Zealand, 2006 Census



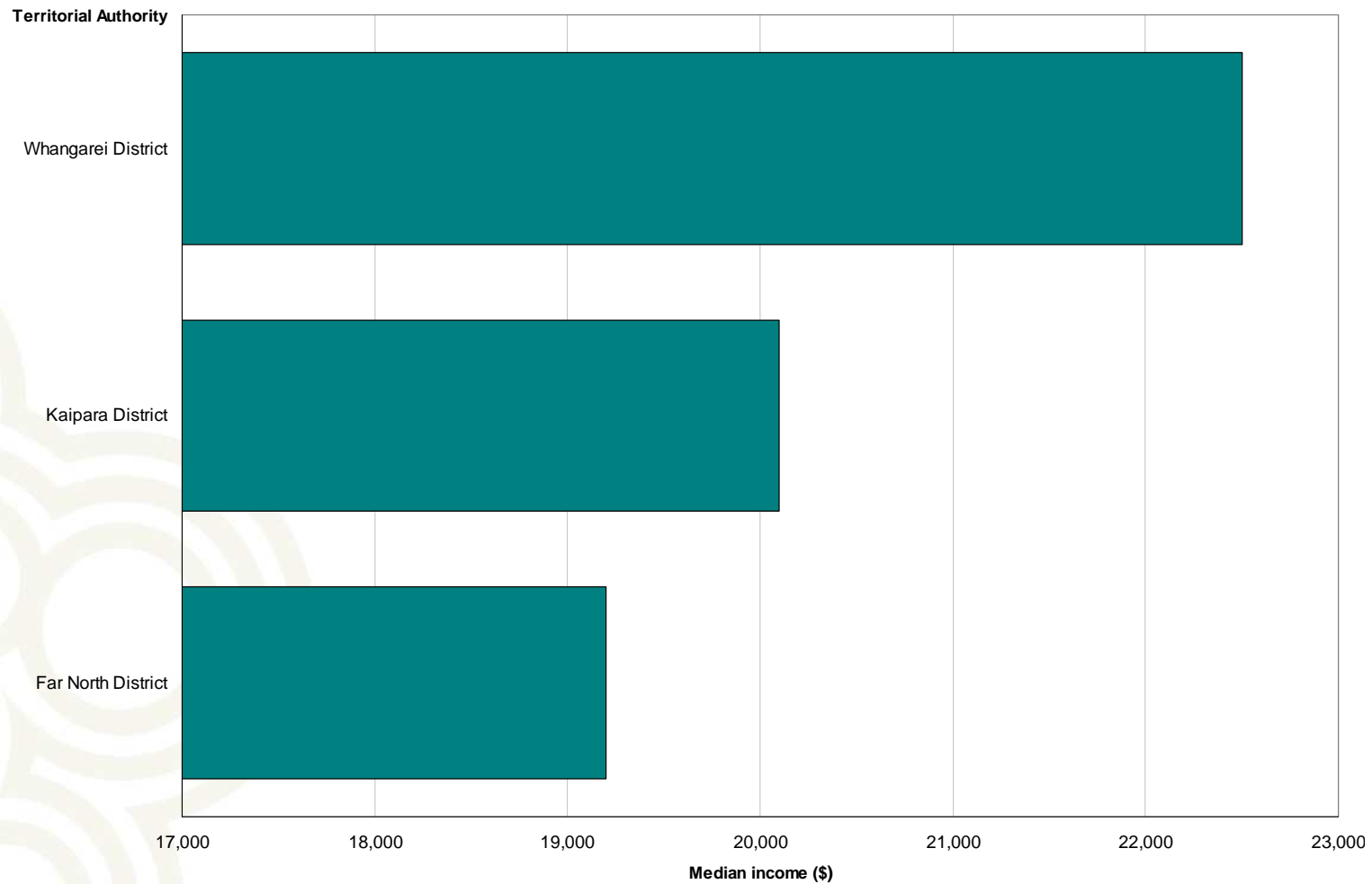
# Unpaid Activities

## Northland Region and New Zealand, 2006 Census

	Region	NZ
Helping someone who is ill or has a disability who does not live in own household	10.9	9.1
Household work for own household	86.3	86.1
Looking after a child who does not live in own household	17.4	16.2
Looking after a child who is a member of own household	32.9	31.6
Looking after a member of own household who is ill or has a disability	9.7	7.8
No activities	10.7	11.3
Other helping or voluntary work	19.4	15.4

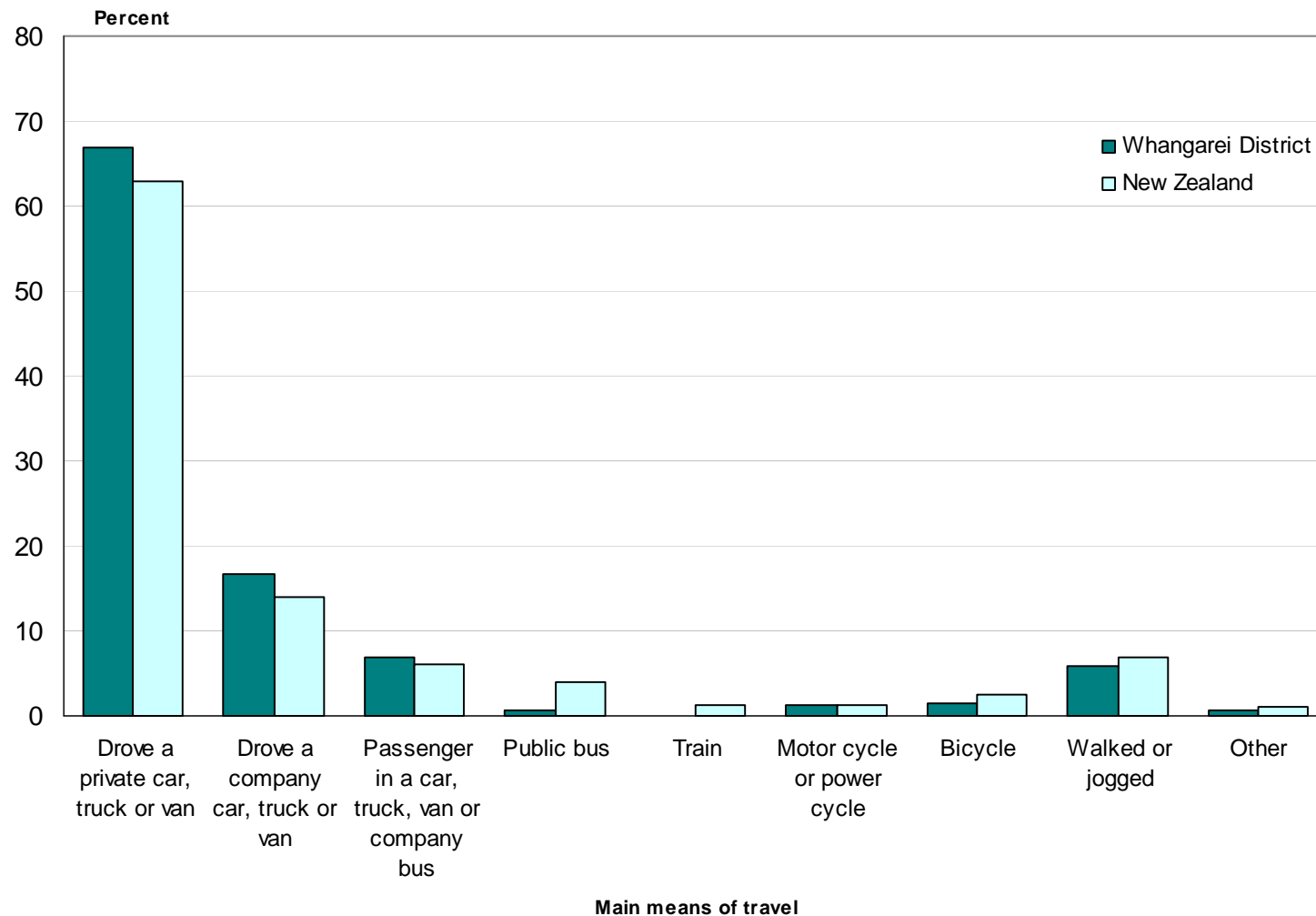
# Median Personal Income

## Territorial Authorities in Northland Region, 2006 Census



# Main Means of Travel to Work

## Whangarei District and New Zealand, 2006 Census



## Private occupied dwellings

### New Zealand

1,471,746

- 8.2 percent increase from 2001

### Northland Region

55,524

- 7.6 percent increase from 2001

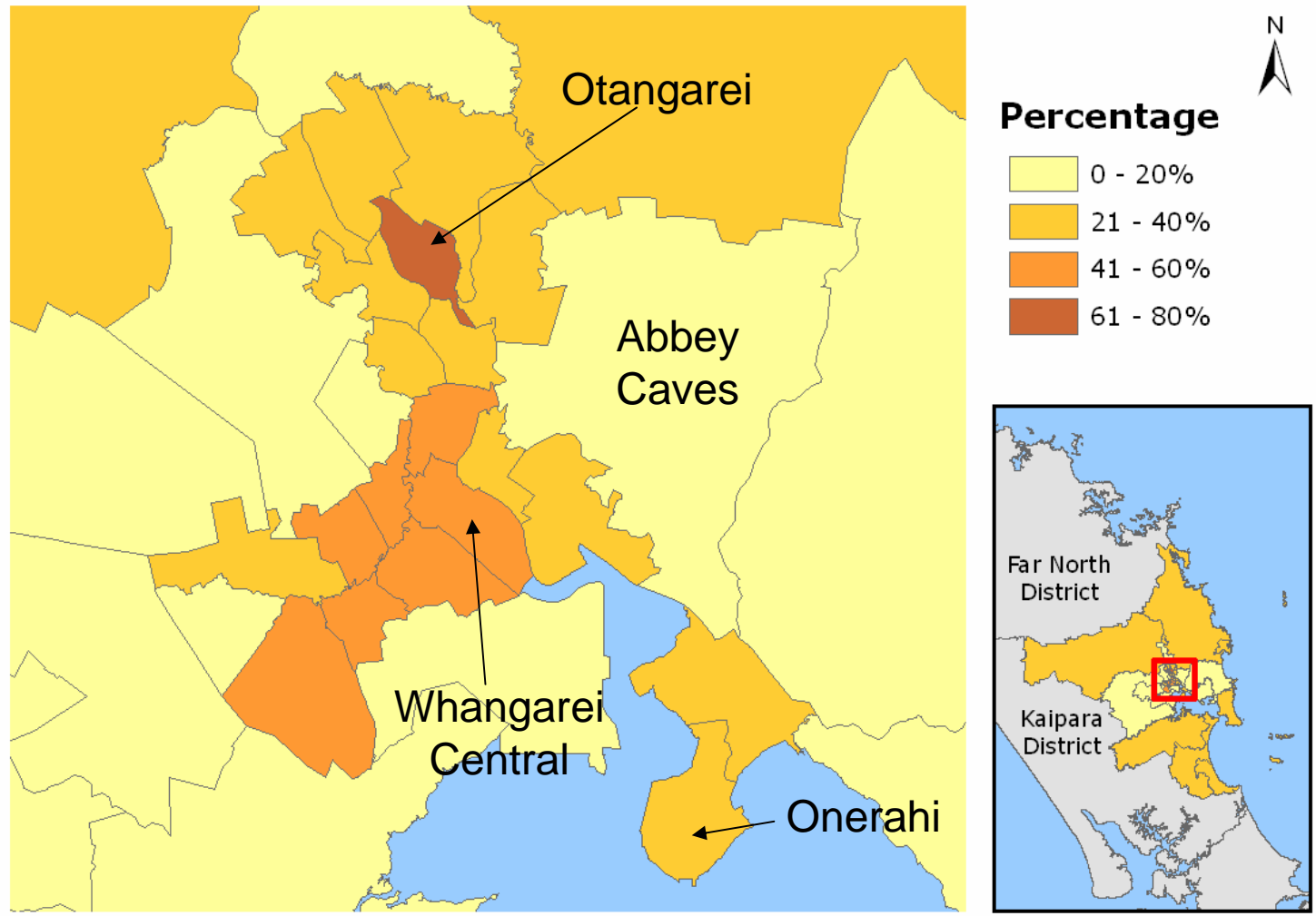
### Whangarei District

28,035

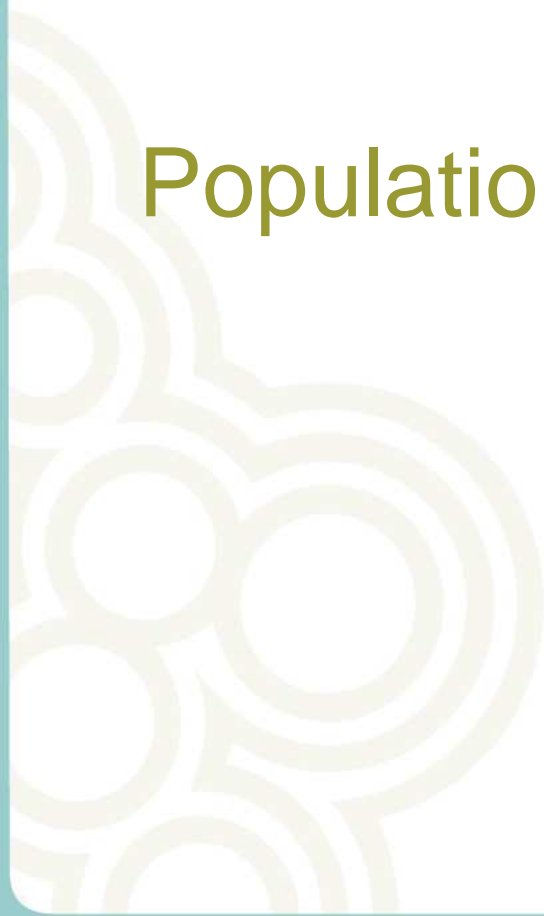
- 9.9 percent increase from 2001

# Dwellings Not Owned by Usual Resident(s)

## Whangarei District (Area Unit), 2006 Census



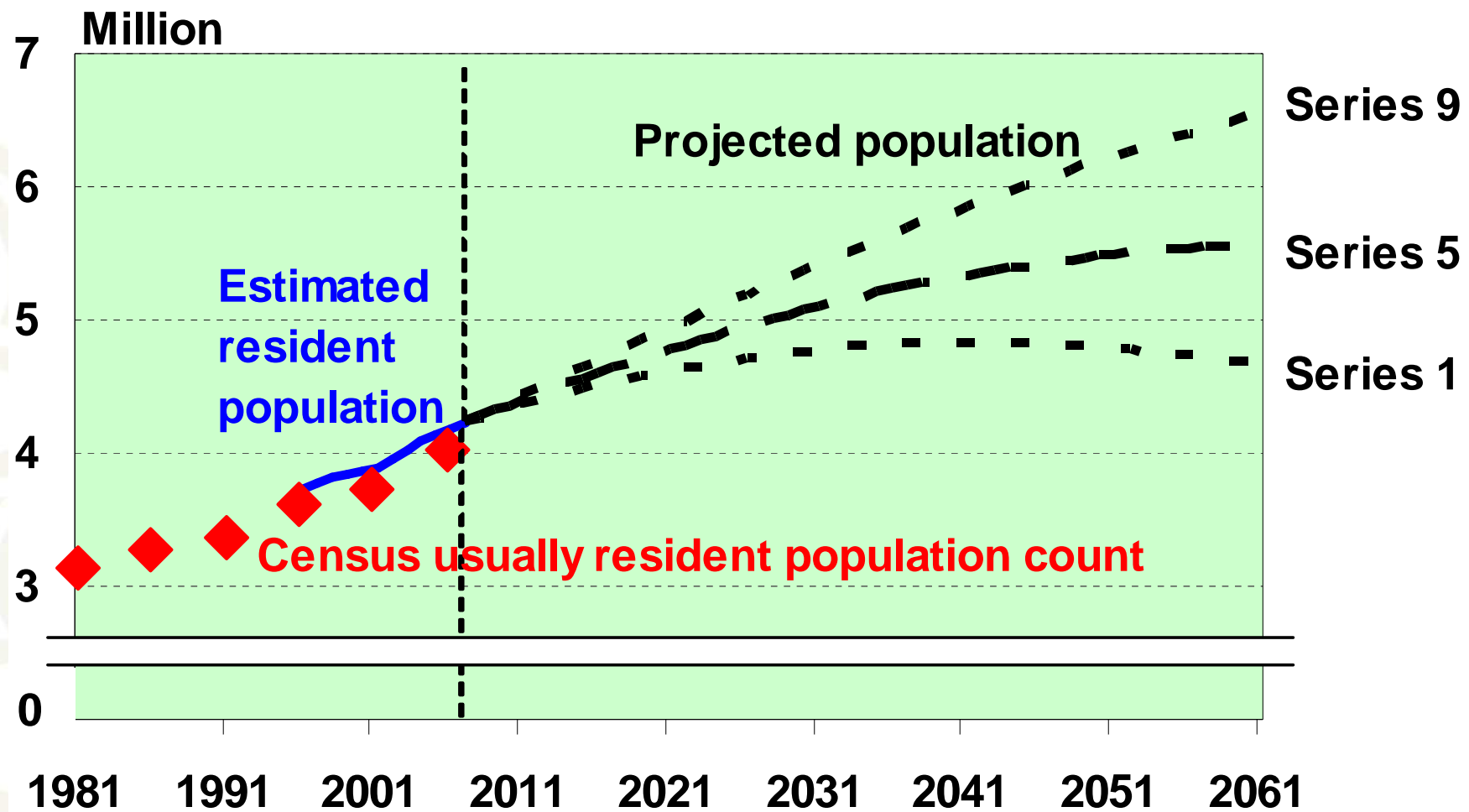
# Population estimates and projections



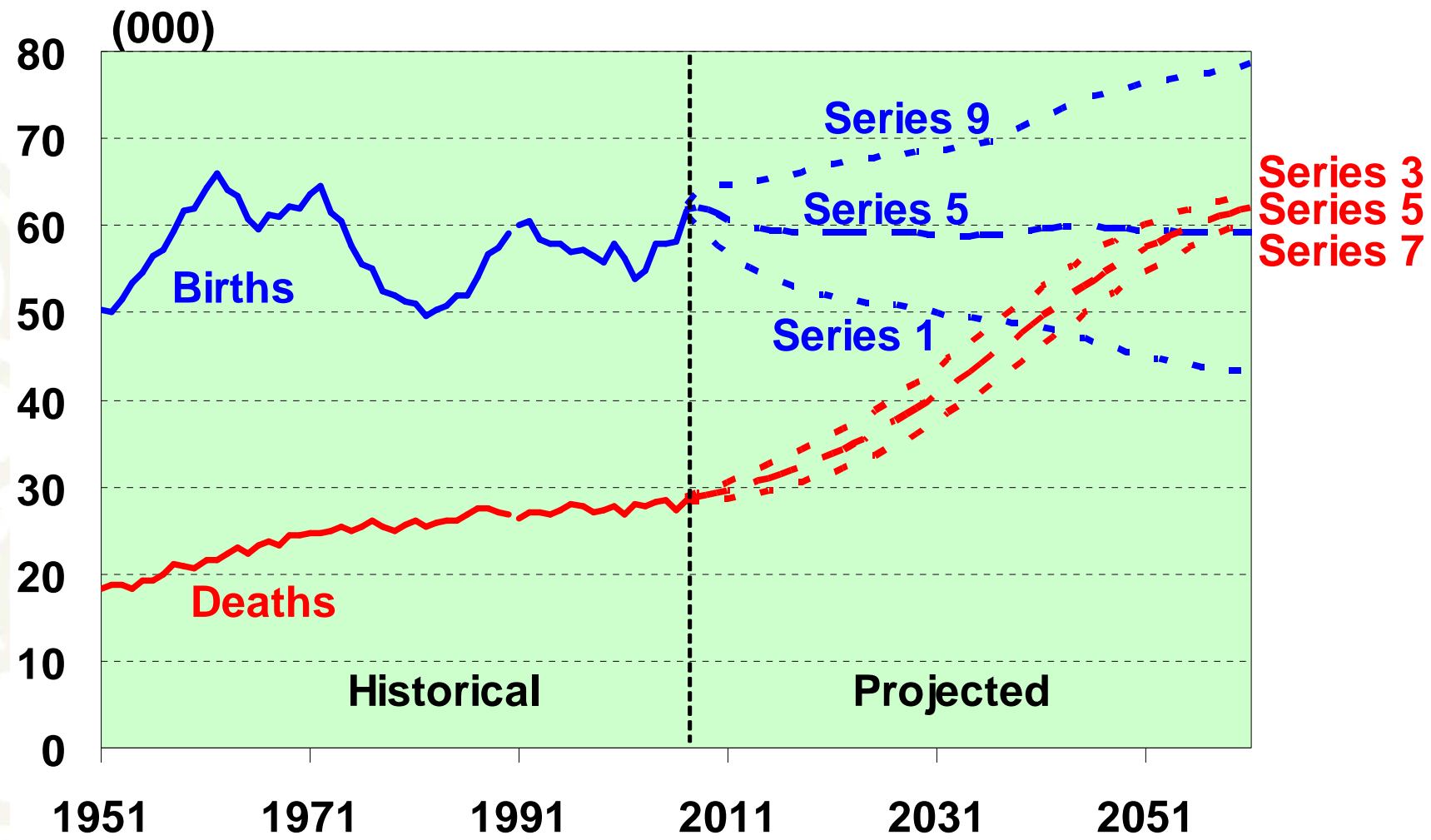
## Estimated resident population

- The best measure of who lives in an area
- A census base (excluding overseas visitors) adjusted for:
  - o Net census undercount
  - o Residents temporarily overseas
  - o Births, deaths and net migration to 30 June 2006
- Limited variables (age, sex, ethnicity)
- Provides base for population projections

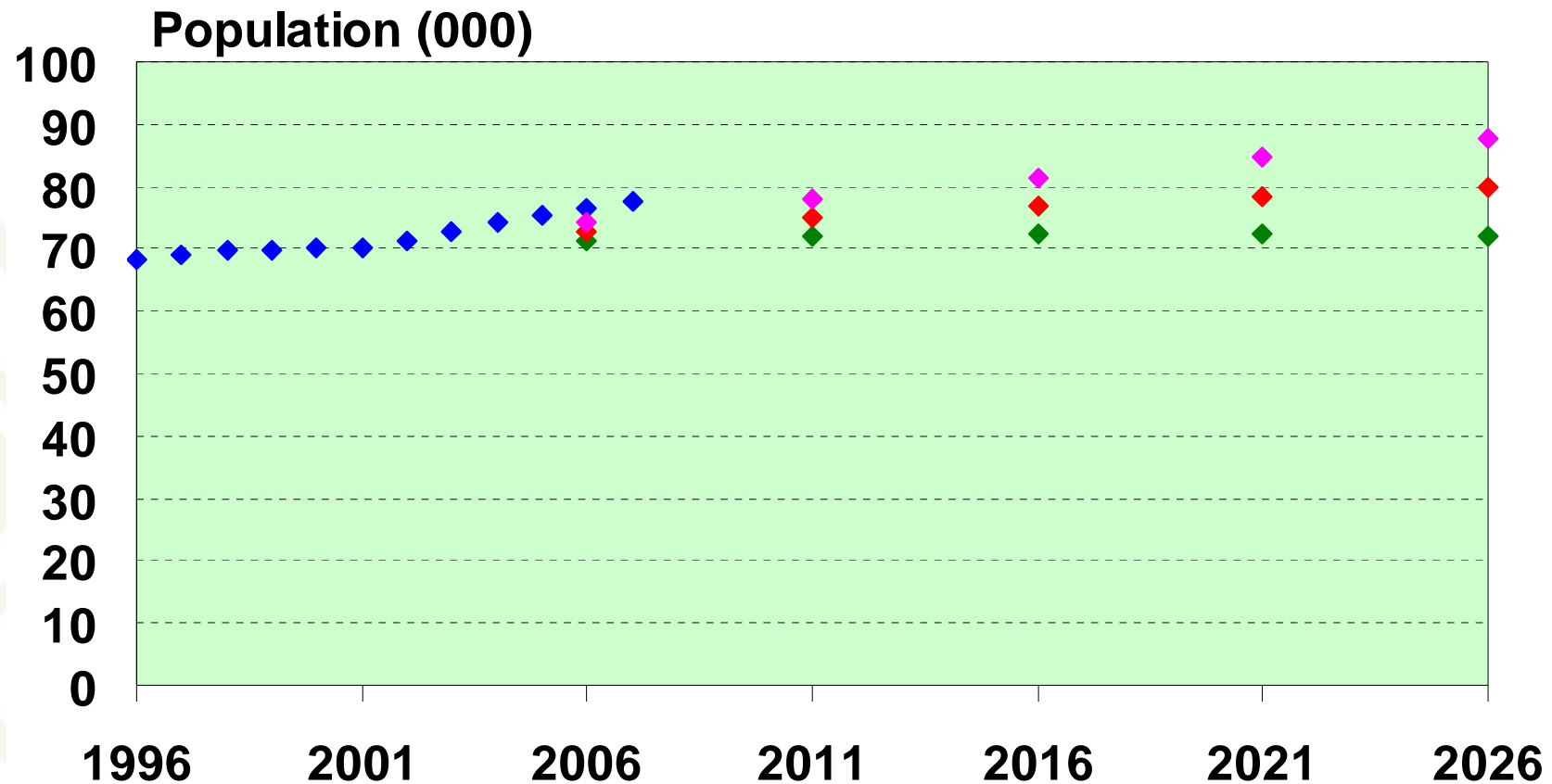
# New Zealand population



# New Zealand shrinking natural increase

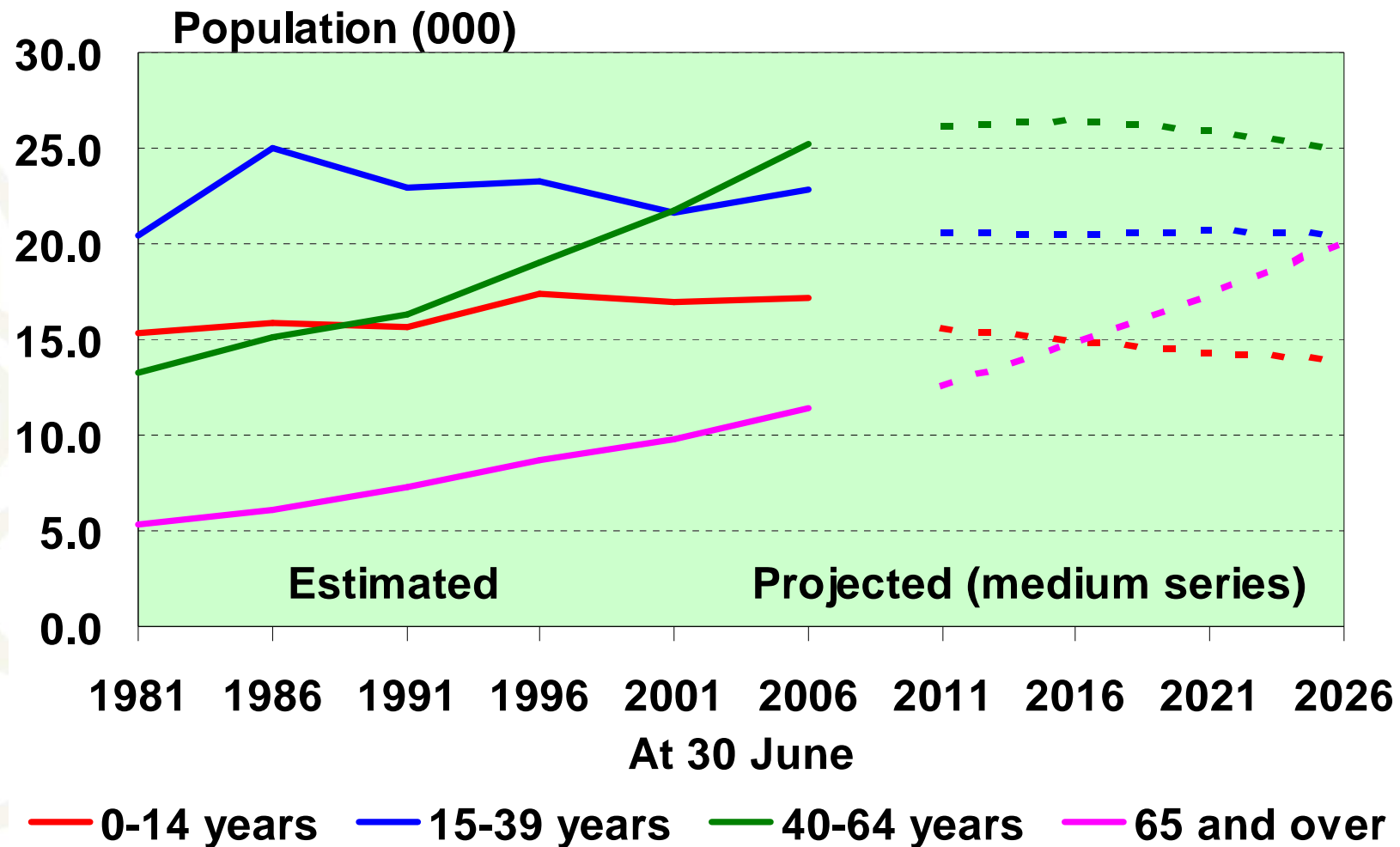


# Population of Whangarei District



- ◆ Estimated resident population
- ◆ Low population projection
- ◆ Medium population projection
- ◆ High population projection

## Whangarei District: growth in older ages



## Key release dates: 2006-base population estimates

21 August 2007: first 2006-base population estimates

*June 2006 data on Table Builder*

- o National and subnational estimates June 2006
- o Area unit estimates June 2006 (NEW)
- o National estimates June 2007 Quarter

23 October 2007

- o Subnational estimates June 2007

December 2007

- o Area unit estimates June 2007 (NEW)

## Population Projections – release dates

- National population projections: 24 October 2007
- Subnational population projections: 3 December 2007
- National ethnic projections: 2 April 2008
- National labour force projections: 6 May 2008
- Area unit population projections: mid 2008
- Family and household projections: 2008/09