



Australian Government

**Australian Institute of
Health and Welfare**

Measuring (Injury) for Wellbeing

Dr Penny Allbon
AIHW

AUSTRALIAN INSTITUTE OF HEALTH AND WELFARE

- Data isn't information;
- Information isn't knowledge; and
- Knowledge isn't wisdom

- themes from the political context in Australia
- trends and the burden of disease and injury
- how we are responding to the need to better understand what's happening
- the link between measurement and policy change

About the AIHW

- Established through AIHW Act 1987 as Australian Institute of Health - “Welfare” added through amendment to Act in 1992
- Statutory authority of the Australian Government
- Board: mix of independent and representative members



Australian Institute of Health and Welfare Act 1987

Act No. 41 of 1987 as amended

This compilation was prepared on 5 November 2001
taking into account amendments up to Act No. 159 of 2001

The text of any of those amendments not in force
on that date is appended in the Notes section

Prepared by the Office of Legislative Drafting,
Attorney-General's Department, Canberra

AIHW is the national institute for health, housing and community services data

- Data development, standards and consistency
- Collation, reporting and analysis
- Indicator development
- Research and evaluation

Required under the AIHW Act to...

- **Collect and produce and coordinate** health and welfare-related information and statistics;
- Provide an ongoing evidence base to inform policy and community debate;
- Develop relevant specialised **statistical standards and classifications**;
- Publish methodological and substantive **reports**;
- Report on the state of the nation's health and welfare every two years

Popular titles

Get your
copy now!



Australia's
health 2006

Get your
copy now!



Australia's
welfare
2005

Administrative data

- state and territory collections

- hospitals
 - mental health
 - expenditure
 - public and community housing
 - homelessness
 - disability services
 - childcare
 - adoptions
- 22 National Minimum Data Sets (NMDS)
 - 12 Data Set Specifications (DSS)
 - 15+ under development
- Juvenile Justice
 - Child protection
 - National Death Index

What

We bring our statistical, data and public health capabilities to bear in many areas, all related to injury. These twelve topics represent much of our current and recent activity:

- National injury surveillance
- Indigenous injury
- Falls by older people
- Transport safety
- Occupational safety
- Suicide and intentional self-harm
- Alcohol and injury
- Injury and chronic disease
- Safety and quality in health care
- Classification and terminologies
- Data linkage, severity scaling and other methodological developments
- Global burden of injury

Reports on these and other topics can be found at our website:

www.nisu.flinders.edu.au

Research Centre for Injury Studies

LEVEL 28
MARK OUPHANT BUILDING
LAFFER DRIVE
BEDFORD PARK SA 5042

GPO Box 2100
ADELAIDE SA 5001

Phone: +61 8 8201 7602
Fax: +61 8 8374 0702
E-mail: rcis@flinders.edu.au
www.nisu.flinders.edu.au

Research Centre for Injury Studies

incorporating the

**AIHW National Injury
Surveillance Unit**

research
centre
for injury studies





Australian Government
**Australian Institute of
Health and Welfare**

The context

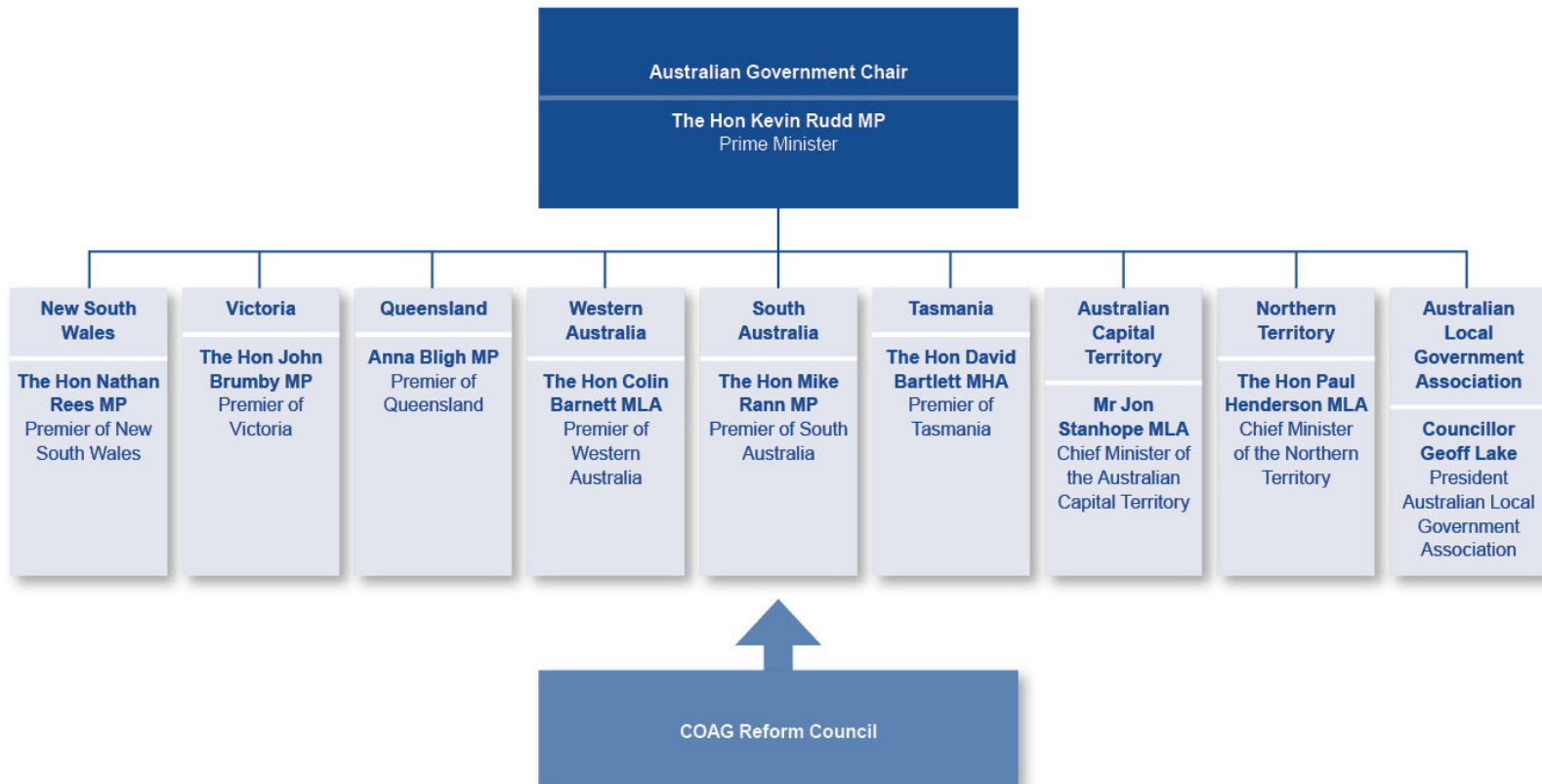
AUSTRALIAN INSTITUTE OF HEALTH AND WELFARE

Injury prevention and control: a National **Health** Priority Area, since 1996

- The National Injury Prevention and Safety Promotion Plan: 2004-14
- National Falls Prevention for Older People Plan: 2004 onwards
- National ATSI Safety Promotion Strategy, 2005

COAG

Council of Australian Governments



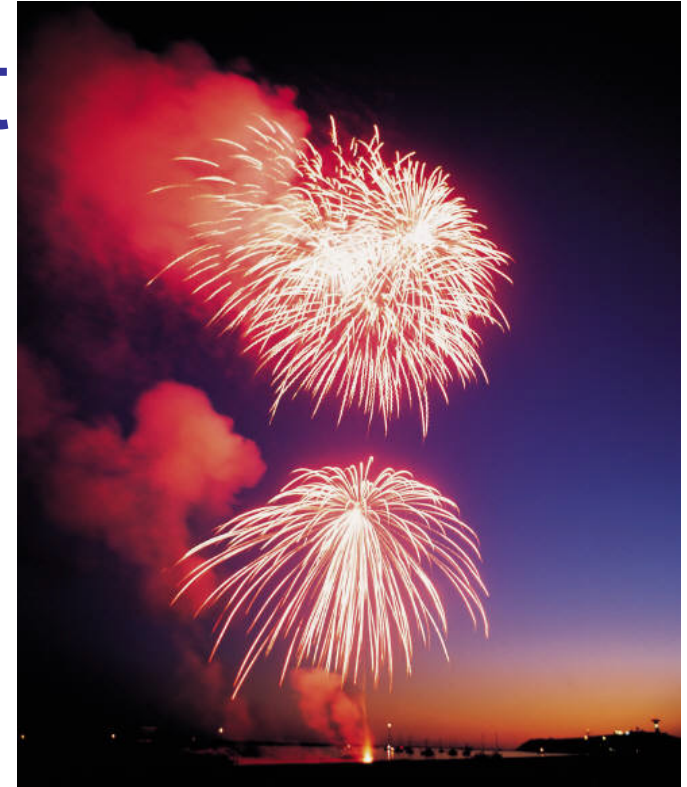
National Disability Insurance Scheme

- a needs-based no fault social insurance scheme
- to replace the existing fragmented approaches
- an entitlement to lifetime care and a strong incentive for early intervention
- ? 3% of the population – 700,000 people

- ‘a national long term care scheme would be complex to design and difficult to implement.....It is a big idea. But so were Medicare, aged pensions and compulsory superannuation...’
 - **Bill Shorten**, federal parliamentary secretary for disabilities and children’s services

Political commitment

- focuses attention:
policy makers are serious about this
- drives the need for
reliable and timely data
- seize the opportunity while it lasts....



COAG National Agreement Indicators

- Falls in hospitals resulting in patient harm
- Intentional self-harm in hospitals
- Falls in residential aged care resulting in patient harm
- Hospitalisation for injury and poisoning
- Avoidable mortality
- Indigenous hospitalisations by principal diagnosis, including injury and poisoning,
-total population and children under 5

Indicators should.....

- Be worth measuring
- Be measurable for diverse populations
- Be understood by people who need to act
- Galvanise action
- Be relevant to policy and practice
- Be measurable over time to reflect results of actions
- Be feasible to collect and report
- Comply with national process of data definitions

An infinite number of indicators

But limited data sources



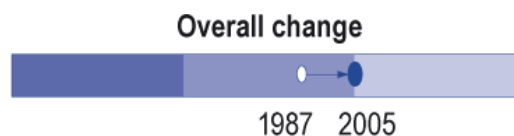
Australian Government
**Australian Institute of
Health and Welfare**

Trends

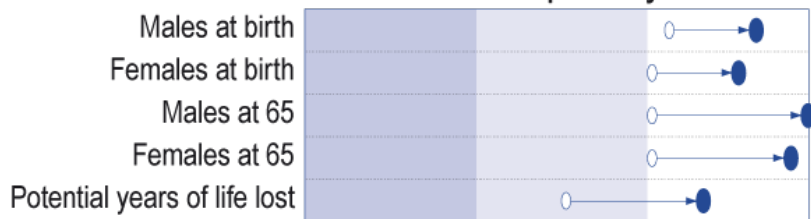
And the burden of disease and injury

AUSTRALIAN INSTITUTE OF HEALTH AND WELFARE

Australia compares well among OECD



Life expectancy



Self-rated health



Risk factors

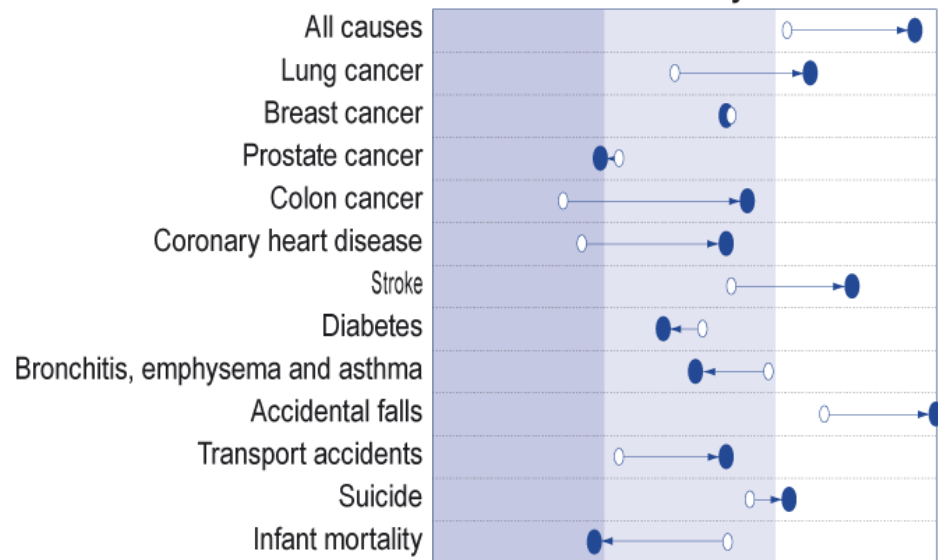


Morbidity



'worst third' 'middle third' 'best third'

Mortality



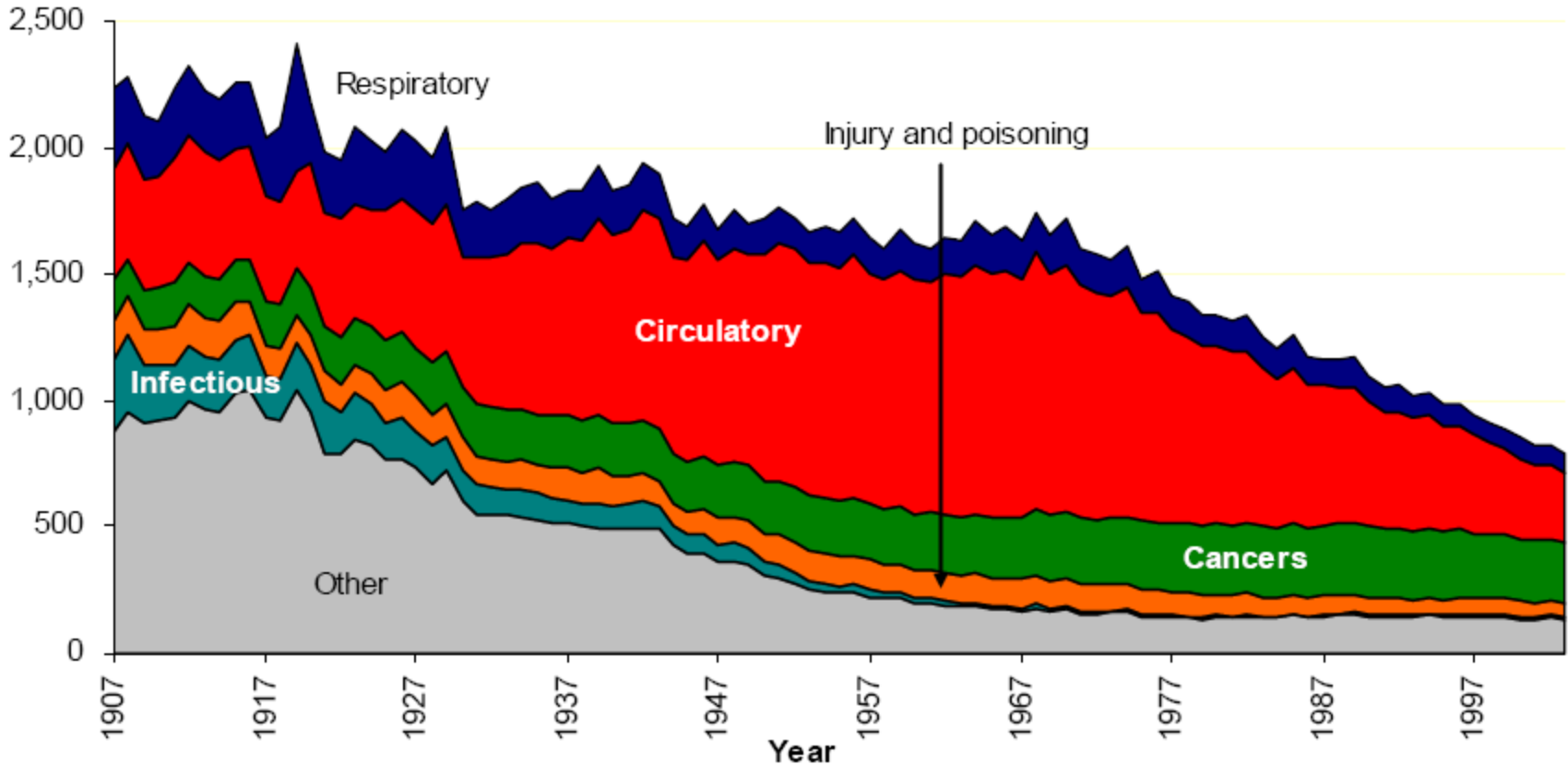
Health labour force

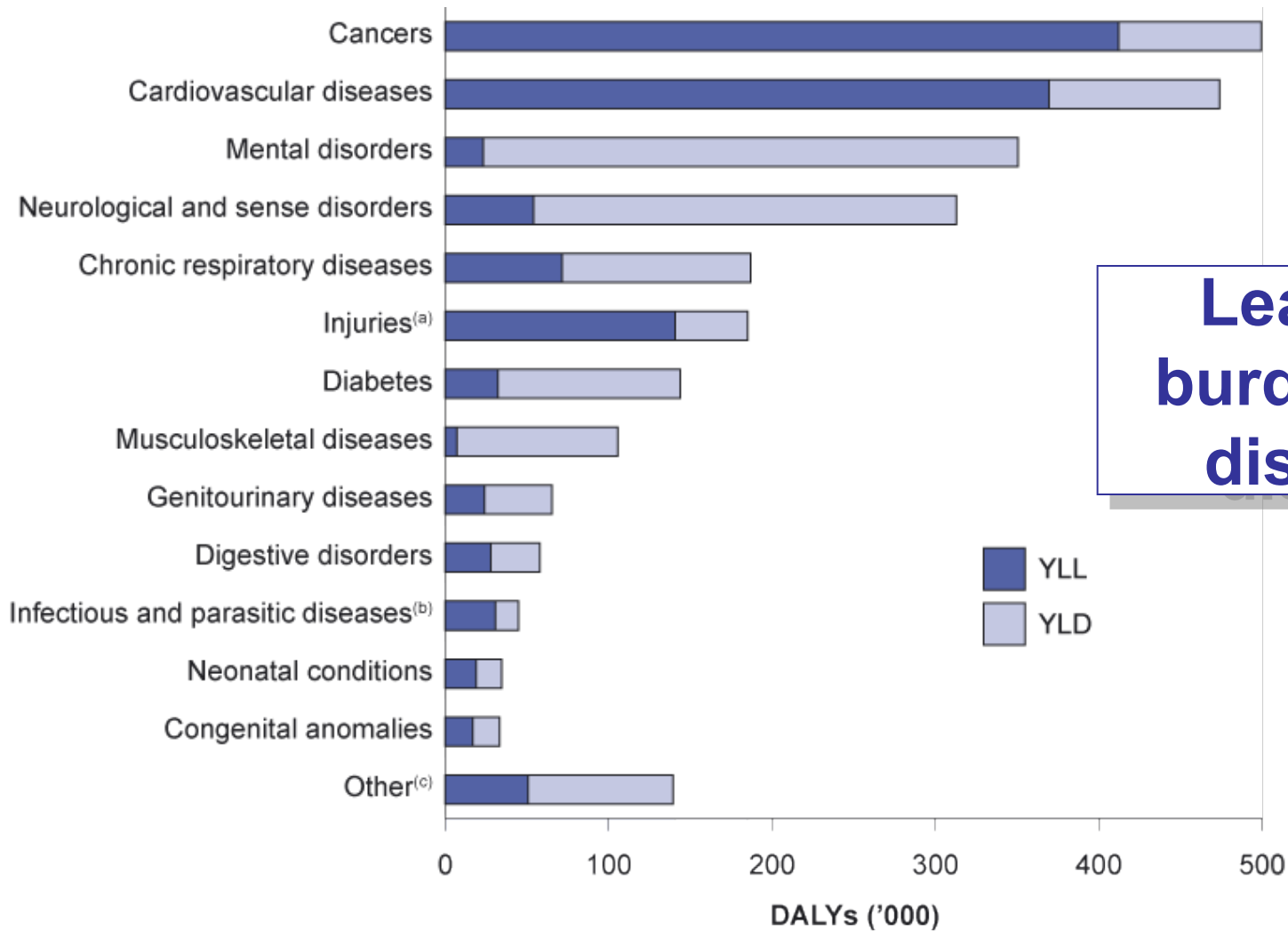


'worst third' 'middle third' 'best third'

Broad cause mortality trends, Australia

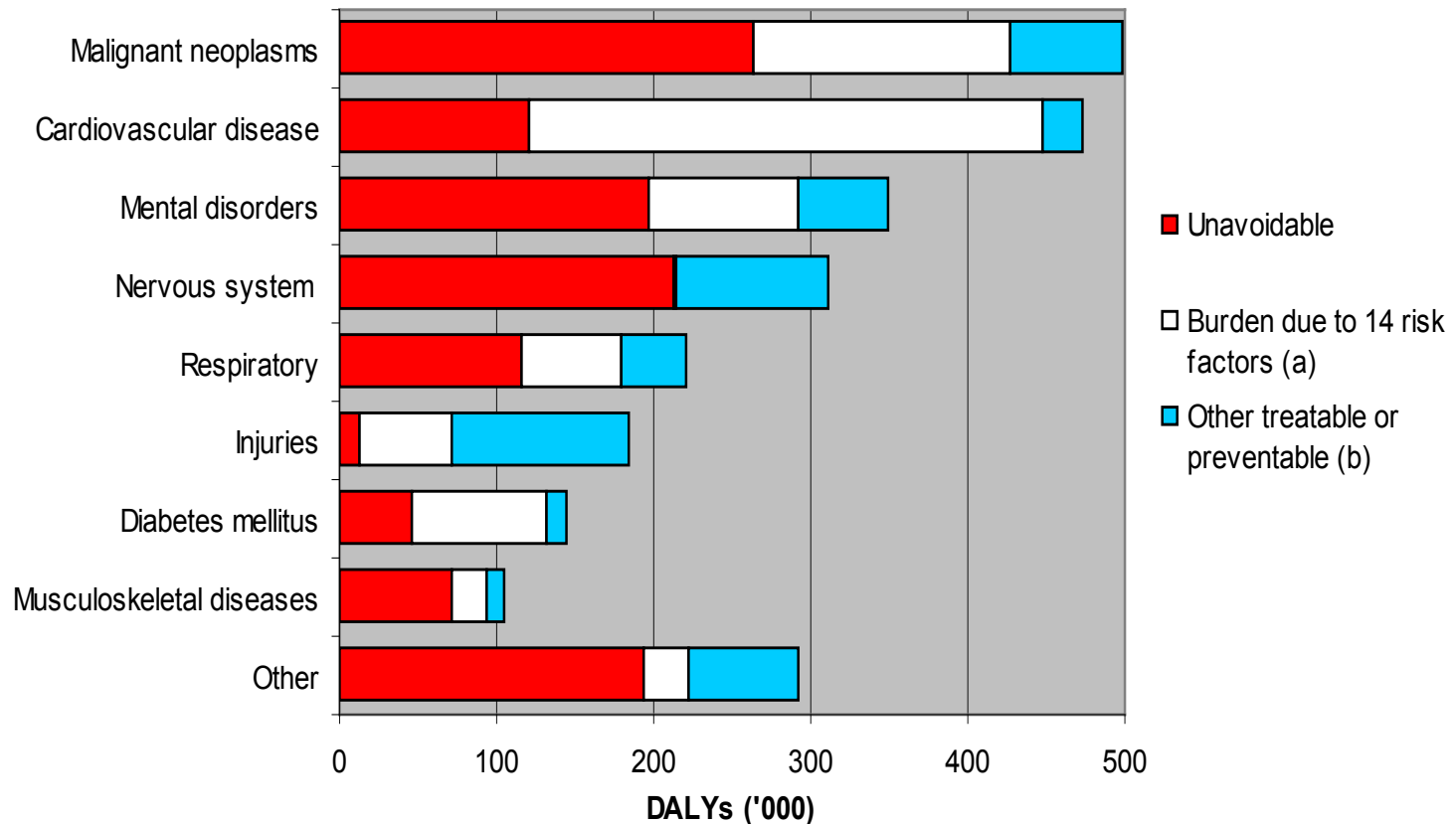
Deaths per 100,000 population





Leading burdens of disease

Burden of disease in 2003 by major disease group, subdivided into that portion mostly unavoidable, that portion due to 14 burden of disease risk factors, and other treatable or preventable burden



Projected health expenditure (\$ billion 2003 prices)

	2003	2033	Change
Diabetes	1.4	7.0	401%
Dental	5.1	12.4	144%
Cardiovascular	7.9	16.2	105%
Mental	4.3	8.5	97%
Cancer	2.8	5.2	84%
Injuries	5.6	9.4	67%
Maternal	1.78	2.5	41%
Total	71.4	162.3	127%

- Injury is the greatest cause of death in the first half of life
- The pattern of injury varies significantly with age
- Injury accounts for 7% of the burden of disease (2003)
- Death rates from injury are falling (age standardised) – with some specific exceptions
- We're not making much difference to the differentials



Australian Government
**Australian Institute of
Health and Welfare**

Data Improvement

Some activities

AUSTRALIAN INSTITUTE OF HEALTH AND WELFARE

Data quality

data linkage
data linkage

coding

National Coroners Information System

undercounting

Indigenous identification

registers

AMDIG

ICD 11

43030<0703-0205403

The Diseases and Casualties this Week.



A Bortive	5
Aged	36
Apoplexie	1
Childbed	25
Chriſomes	22
Conſumption	130
Convulſion	58
Cough	2
Distracted	1
Dropſie	32
Drownd in a Ditch at Saviours Southwark	1
Fever	314
Flor and Small-pox	11
Flux	1
Grief	3
Griping in the Guts	70
Jaundies	2
Impoſthums	16
Infans	13
Kingſevil	2
Leproſie	1
Meagrome	1
Mother	1
Plague	2817
Pluriſie	1
Purples	2
Quinſie	3
Rickets	14
Riſing of the Lights	32
Rupture	3
Scowring	3
Scarvy	3
Spotted Fever	174
Stilborn	11
Stone	5
Stopping of the Stomach	10
Suddenly	2
Surfeis	85
Teeth	90
Thruſh	4
Tiffick	3
Ulcer	3
Vomiting	1
Wormes	18

Chriſted	Males	90	Buried	Males	2022	Plague	2817
	Females	88		Females	2008		
	In all	178		In all	4030		
Increased in the Burials this Week				1016.			
Parishes clear of the Plague		44		Parishes Infected		86	

The Aſſize of Bread ſet forth by Order of the Lord Mayor and Councill of Aldermen:
A penny Wheaten Loaf to contain Nine Ounces and a half, and three
half-penny White Loaves the like weight.

London Bills of Mortality

Every Thursday
1603- 1830s



Data quality

data linkage
data linkage

coding

National Coroners Information System

undercounting

Indigenous identification

registers

AMDIG

ICD 11

43030<0703-0205403

The Future is e-Health

- **Across Australia there is a groundswell of support for a better, more connected healthcare system. More than 80 percent of Australians are in favour of electronic health records and are increasingly aware of the safety and quality benefits that e-health can deliver.**



- ▶ Cover more of the system
- ▶ Join up the silos
- ▶ Take a longitudinal view
- ▶ Understand what works
- ▶ See beyond the health sector

▶ From here to where we'd like to be –
▶ or NOT be

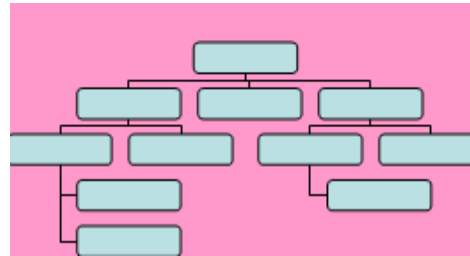
- ▶ Obsolescence of our systems
- ▶ Discontinuities in our series
- ▶ Access difficulties



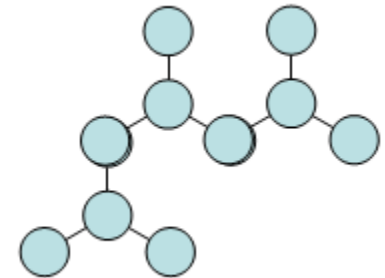
Information as a continuum

ICD

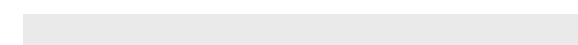
classifications



terminologies



SNOMED







Australian Government
**Australian Institute of
Health and Welfare**

Does the data inform
the decisions?

AUSTRALIAN INSTITUTE OF HEALTH AND WELFARE

Hospitalisations...

annual average, 2006/7 – 2007/8

- crocodile 6
- shark 14
- sheep 91
- cat 341
- cattle 607
- horse 988 (excluding horse-riding)

- Political commitment
- Good information
- Getting the message out

Making a difference

- Data alone do not reveal the full situation – meaning is only acquired when data are analysed and interpreted
- Data is not of any use to anyone unless it is in the hands of those who can make changes...