

Embargoed until 10:45am – 12 June 2007

Accommodation Survey

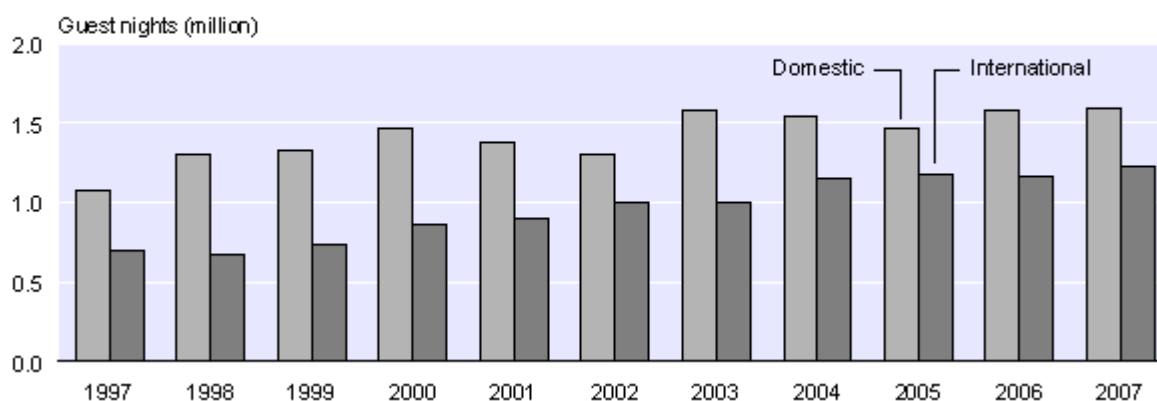
April 2007

Highlights

In April 2007 compared with April 2006:

- Guest nights for international visitors were 5 percent higher.
- Domestic guest nights were 1 percent higher.
- Total guest nights were 2 percent higher.
- Guest nights were 3 percent higher in the North Island and 1 percent higher in the South Island.
- Nine of the 12 regions recorded more guest nights.
- Three of the five accommodation types recorded more guest nights.

International and Domestic Guest Nights
April 1997–2007



Dallas Welch (Mrs)
Acting Government Statistician

12 June 2007
Cat 70.905 Set 06/07 – 189

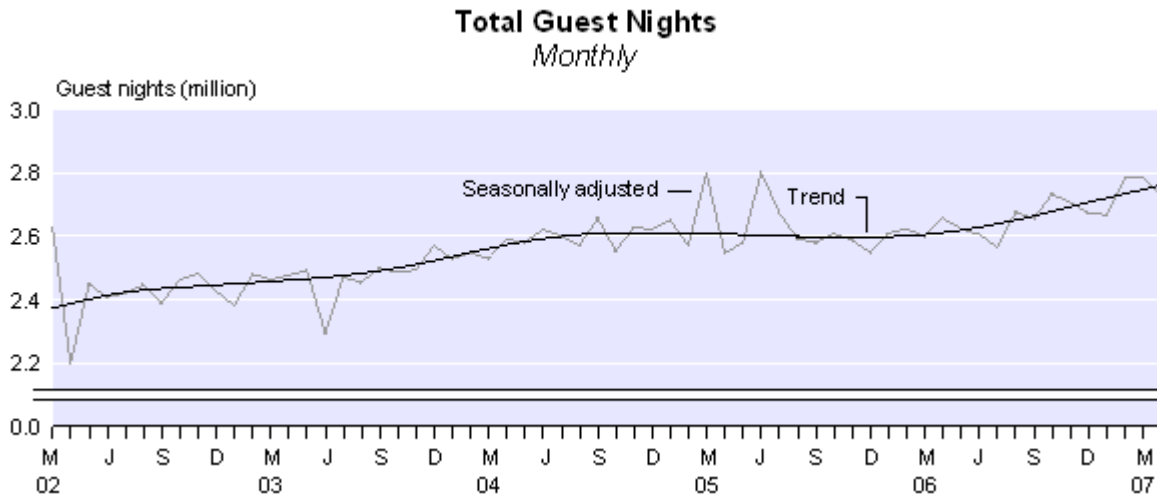
There is a companion Media Release published – [Accommodation Survey: April 2007](#).

Commentary

Total guest nights

Total guest nights in short-term commercial accommodation were 2.8 million in April 2007, up 2 percent compared with April 2006 and 6 percent compared with April 2005.

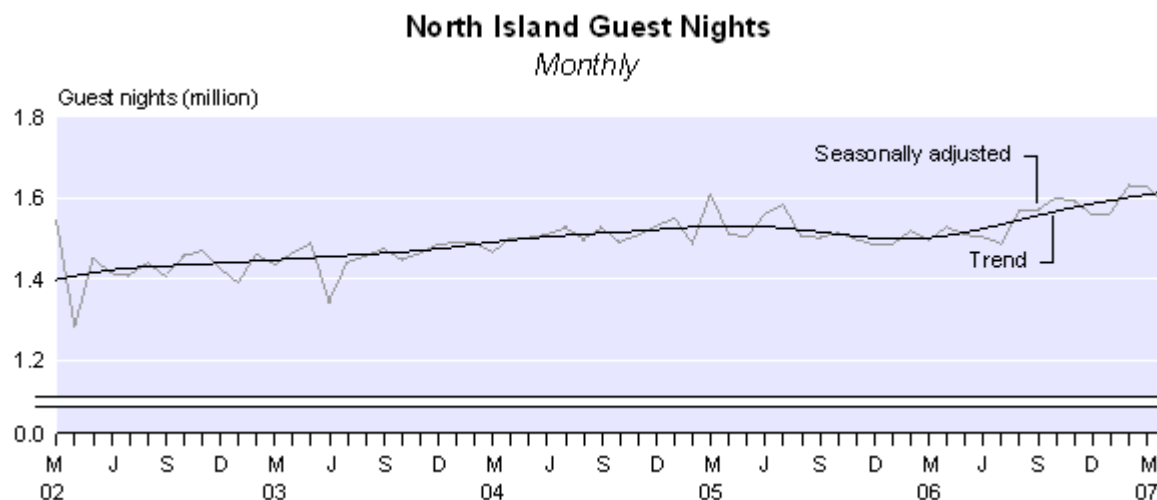
The trend in total guest nights has been increasing since January 2006 after a flat period that began in November 2004. In April 2007, the trend level was 6 percent higher than in both April 2006 and 2005.



Guest nights by island

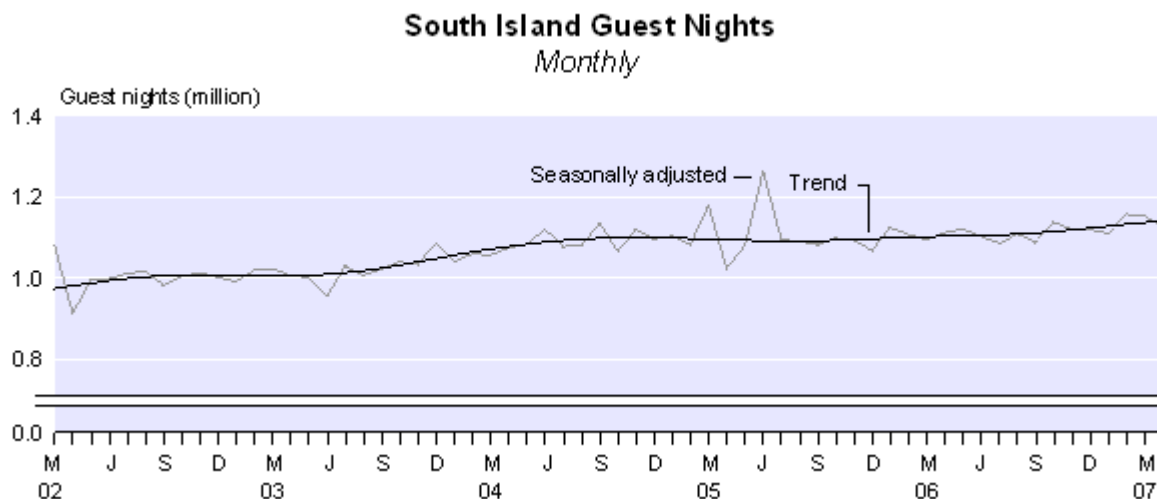
Guest nights in the North Island were 1.6 million in April 2007, a 3 percent increase compared with April 2006.

The trend in North Island guest nights has been increasing since February 2006 following a period of decreases that began in June 2005. In April 2007, the trend level was 7 percent higher than in April 2006 and 5 percent higher than in April 2005.



Guest nights in the South Island were 1.2 million, a 1 percent increase compared with April 2006.

The trend in South Island guest nights has been increasing since August 2005, after a period of flatness. In April 2007, the trend level was 3 percent higher than in April 2006 and 4 percent higher than in April 2005.



Guest nights by region

Nine of the 12 regions recorded more guest nights in April 2007 than in April 2006. The Auckland region (up 26,000 or 6 percent) had the largest absolute increase in guest nights, followed by Bay of Plenty (up 17,000 or 6 percent) and Nelson/Marlborough/Tasman (up 10,000 or 6 percent).

Northland (down 8,000 or 5 percent) recorded the largest absolute decrease in guest nights. Some Northland respondents commented that their April 2007 guest nights were affected by the severe flooding that occurred at the end of March.

More information on regional guest nights is now available in Table 7 (Regional Guest Nights) in the Tables section of this release.

Comparison with short-term overseas visitor arrival statistics

The Hot Off The Press release *External Migration: April 2007* shows that short-term overseas visitor arrivals in New Zealand for April 2007 were up 1,600 (1 percent) from April 2006. This follows an increase of 12,200 (5 percent) in March 2007 compared with March 2006.

Similarly, the number of stay days for all visitor arrivals in April 2007 was up 2 percent on April 2006. This follows a 9 percent increase in March 2007 compared with March 2006.

In both April 2007 and 2006, the average length of stay for visitors arriving was 17 days. The average length of stay was 18 days in both March 2007 and 2006.

New Zealand resident short-term departures for April 2007 were up 900 (1 percent) on April 2006. This follows an increase of 8,800 (7 percent) in March 2007 compared with March 2006.

Origin of guests

International visitors spent 1.2 million guest nights in short-term accommodation in April 2007, a 5 percent increase compared with April 2006, and a 4 percent increase compared with April 2005.

Australia recorded the largest absolute increase in international guest nights (up 14,000 or 4 percent), followed by the Other Asian grouping (up 11,000 or 11 percent). The Other Asian grouping includes all Asian countries, with the exceptions of Japan and Korea. External migration data for April 2007 showed overseas visitor arrivals from the People's Republic of China increased 12 percent compared with April 2006. Visitors from North America (down 9,000 or 7 percent) recorded the largest absolute decrease in guest nights.

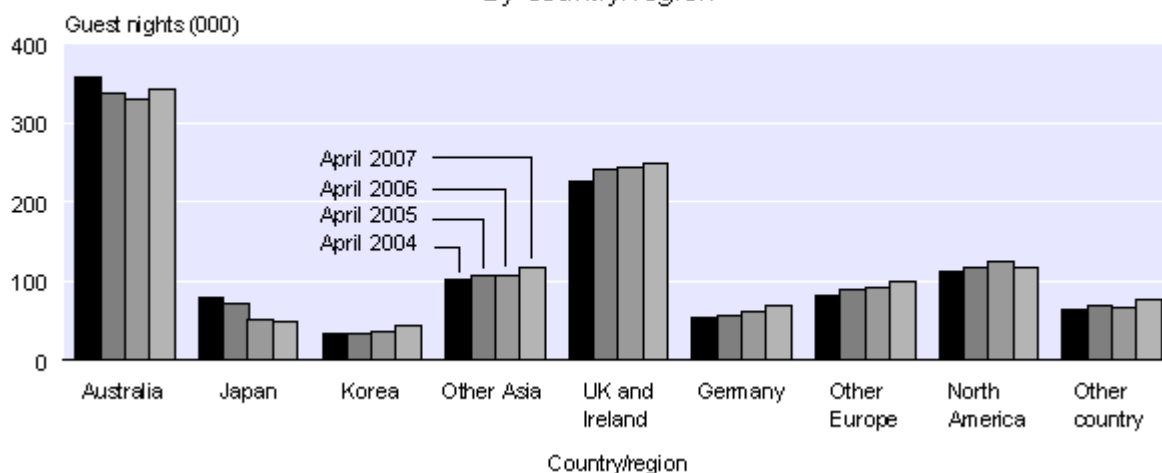
In April 2007, international guest nights were 9 percent higher in the North Island and 1 percent higher in the South Island compared with April 2006. Nine of the 12 regions recorded more international guest nights, with Auckland (up 23,000 or 10 percent) having the largest absolute increase, followed by Bay of Plenty (up 14,000 or 14 percent). Canterbury (down 7,000 or 3 percent) recorded the largest absolute decrease.

Domestic guest nights accounted for 1.6 million guest nights in April 2007, a 1 percent increase compared with April 2006 and an 8 percent increase compared with April 2005.

Domestic guest nights were at a similar level in the North Island and 2 percent higher in the South Island, when compared with April 2006. Eight of the 12 regions recorded more domestic guest nights, with Canterbury (up 12,000 or 5 percent) having the largest absolute increase, followed by Auckland (up 4,000 or 2 percent). Northland (down 5,000 or 6 percent) recorded the largest absolute decrease.

International Guest Nights

By country/region



There was a response rate of 58 percent to the Accommodation Survey question on origin of guests this month. The response rate for this question normally ranges between 55 and 60 percent. Figures for those establishments that failed to respond have been imputed (see Non-response imputation below). Such high levels of imputation can affect data quality, especially for regional statistics and/or statistics by accommodation type.

Guest nights by accommodation type

Three of the five accommodation types recorded more guest nights in April 2007 than in April 2006. Backpackers/hostels (up 26,000 or 7 percent) had the largest absolute increase, followed by caravan parks/camping grounds (up 25,000 or 5 percent) and hotels (up 21,000 or 2 percent). Hosted accommodation (down 2,000 or 5 percent) and motels (down 1,000 or less than 1 percent) both recorded decreases in guest nights compared with April 2006.

Motels had the largest share of total guest nights (34 percent) in April 2007, followed by hotels (30 percent) and caravan parks/camping grounds (20 percent).

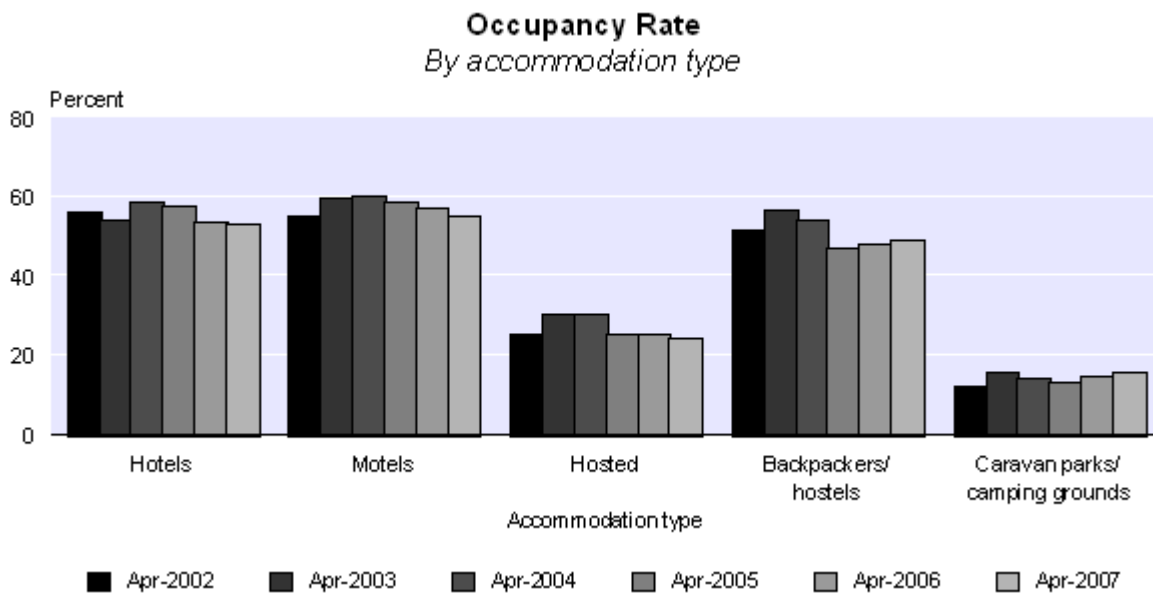
Occupancy rate

The occupancy rate in both April 2007 and 2006, excluding caravan parks/camping grounds, was 52 percent.

Accommodation capacity, excluding caravan parks/camping grounds, was 3 percent above the April 2006 level.

Motels recorded the highest occupancy rate of all the accommodation types (55 percent) in April 2007, followed by hotels (53 percent) and backpackers/hostels (49 percent).

Excluding caravan parks/camping grounds, Otago had the highest occupancy rate (58 percent) in April 2007, followed by Wellington and Auckland (both at 57 percent).



Non-response imputation

When respondents do not answer questions in the Accommodation Survey, Statistics New Zealand estimates the missing information based on data from similar establishments in the same and/or similar areas. For more information, please refer to the Technical notes of this release or contact Statistics NZ.

Response rates by accommodation type for April 2007

Accommodation type	Proportion of establishments responding to questions on guest nights, guest arrivals and stay unit nights	Proportion of the guest night estimate from establishments that responded to the question on guest nights	Proportion of the origin of guest estimate from establishments that responded to the questions on the origin of guests
Hotels	79 percent	91 percent	60 percent
Motels	79 percent	82 percent	56 percent
Hosted	83 percent	85 percent	62 percent
Backpackers/hostels	81 percent	87 percent	49 percent
Caravan parks / camping grounds	80 percent	86 percent	65 percent
Total New Zealand	80 percent	86 percent	58 percent

Survey sponsorship

The Accommodation Survey is a monthly survey undertaken by Statistics NZ and sponsored by the Ministry of Tourism.

For technical information contact:
Tehseen Islam or Karen Brohm
Christchurch 03 964 8700
Email: info@stats.govt.nz

Technical notes

Population

The target population for this survey is all 'geographic units' (called 'establishments' in this publication) that are classified as short-term (less than one month) commercial accommodation providers operating in New Zealand. In terms of the Australian and New Zealand Standard Industrial Classification (ANZSIC), the target population is taken from class 5710 (accommodation), and the part of class 5720 (pubs, taverns and bars) that also provides accommodation.

The survey frame is all short-term commercial accommodation-providing geographic units belonging to an economically significant 'enterprise'. Economic significance is generally determined as being GST registered and having a turnover of at least \$30,000 per annum.

Survey errors

This survey aims for 100 percent coverage of the population (a full census). In practice, however, an overall response rate of between 76 and 80 percent is usually achieved. The remaining units are given imputed values based upon the characteristics of similar establishments in the same or similar regions. Imputation introduces unknown errors into the estimates, and users of the data should bear this in mind. The size of these unknown errors is difficult to quantify.

Other errors occur for reasons such as respondent error, frame quality and errors in processing. While every effort is made to minimise these errors, they will still occur. It is not possible to quantify their effect.

Trend estimates

For any series, the survey estimates can be broken down into three components: trend, seasonal and irregular. While seasonally adjusted series have had the seasonal component removed, the trend series have had both the seasonal and the irregular components removed. Trend estimates reveal the underlying direction of movement in a series, and are likely to indicate turning points more accurately than seasonally adjusted estimates.

The accommodation trend series are calculated using the X-12-ARIMA seasonal adjustment package. They are based on optimal moving averages of the seasonally adjusted series, with an adjustment for outlying values. The X-12-ARIMA package is an updated version of X-11-ARIMA, developed by the US Bureau of the Census.

The trend estimates towards the end of the series incorporate new data as it becomes available, and can therefore change as more observations are added to the series. Revisions can be particularly large if an observation is treated as an outlier in one month, but is found to be part of the underlying trend as further observations are added to the series. All trend estimates are subject to revisions each month, but normally only the last two or three estimates are likely to be substantially altered.

Trend estimates versus month-on-month comparisons

Trend estimates reveal the underlying direction of the movement in a series. In contrast, comparisons between one month and the same month in the previous year(s) do not take account of data recorded in between these periods, and are subject to one-off fluctuations. Reasons for fluctuations include changes in the timing of holidays, international crises, and large sporting and cultural events.

Seasonally adjusted estimates

The X-12-ARIMA package has been used to produce the seasonally adjusted estimates referred to in the Commentary text. Seasonal adjustment aims to eliminate the impact of regular seasonal events. These may be due to climatic effects (such as more guests staying in camping grounds during the summer) or calendar effects (such as holidays). This makes the data for adjacent months more comparable. All seasonally adjusted figures are subject to revision each month.

Further information about [seasonal adjustment](#) is available on the Statistics New Zealand website.

Classification of accommodation type

The predominant capacity provided determines the accommodation type. For instance, if a business provides both motel and camping ground accommodation, but the majority of its stay units are motel rooms, then it would be classified as a motel. The classification system used is the New Zealand Accommodation Classification, broadly defined below:

- Hotels: includes both hotels and resorts
- Motels: includes motor inns, apartments and motels
- Hosted: includes private hotels, guest houses, bed and breakfasts, and holiday farm (farmstay) accommodation
- Backpackers/hostels
- Caravan parks/camping grounds.

Further information on the classification system is available on request.

Classification of residence of guest

Every third month (January, April, July and October), the survey asks all respondents to classify their guests as coming from the following regions:

Domestic

Auckland
Wellington
Rest of North Island
Canterbury
Otago
Rest of South Island
Don't know

International

Australia
Japan
Korea
Other Asia
UK and Ireland
Germany
Other Europe
North America
Other
Don't know

Other definitions

Business frame

A register (maintained by Statistics NZ) of all economically significant businesses operating in New Zealand from which the survey population is drawn.

Establishment

The smallest statistical unit operating within a single physical location and owned by a single enterprise. The term is used to represent what is usually called the 'geographic unit' in other Statistics NZ publications.

Guest night

A guest night is equivalent to one guest spending one night at an establishment. For example, a motel with 15 guests spending two nights would report provision of 30 guest nights of accommodation.

Stay unit

The term used to describe the unit of accommodation that is available to be charged out to guests (for example a powered site in a caravan park, a bed in a backpackers, a room in a hotel or motel).

Capacity (stay unit nights available)

This is the basic measure of an establishment's accommodation capacity. It is defined as one stay unit multiplied by one night. For example, 10 units in a motel available for guest use (whether occupied or not) for the full 31 days in July would have an accommodation capacity of 310 stay unit nights.

Occupancy rate

This derived variable is calculated by dividing stay unit nights occupied by stay unit nights available. In the case of the motel above, if six of its 10 units were occupied every night in July, it would have $6 \times 31 = 186$ stay unit nights occupied, and its occupancy rate would be 60 percent.

Average length of stay

This derived variable is calculated by dividing total guest nights by total guest first nights.

More information

For more information, follow the [link](#) from the Technical notes of this release on the Statistics NZ website.

Confidentiality

Data collected and information contained in this publication must conform to the provisions of the Statistics Act 1975. This requires that published information maintains the confidentiality of individual respondents.

Copyright

Information obtained from Statistics NZ may be freely used, reproduced, or quoted unless otherwise specified. In all cases Statistics NZ must be acknowledged as the source.

Liability

While care has been used in processing, analysing and extracting information, Statistics NZ gives no warranty that the information supplied is free from error. Statistics NZ shall not be liable for any loss suffered through the use, directly or indirectly, of any information, product or service.

Timing

Timed statistical releases are delivered using postal and electronic services provided by third parties. Delivery of these releases may be delayed by circumstances outside the control of Statistics NZ. Statistics NZ accepts no responsibility for any such delays.

Next release ...

Accommodation Survey: May 2007 will be released on 11 July 2007.

Statistics New Zealand: The first source of independent information for your key decisions.

Tables

The following tables can be downloaded from the Statistics New Zealand website in Excel 97 format. If you do not have access to Excel 97 or higher, you may use the [Excel file viewer](#) to view, print and export the contents of the file.

List of tables

1. Establishments, capacity, guest nights, occupancy rate and average stay, by accommodation type
2. Occupancy rate excluding caravan parks/camping grounds, by region
3. Total guest nights
4. Seasonally adjusted and trend guest nights, by accommodation type
5. North Island guest nights
6. South Island guest nights
7. Regional guest nights

Accommodation pivot tables

The Accommodation pivot tables provide more detailed information, breaking the survey variables down by regional tourism organisation areas and territorial authority areas.

- **Regional Tourism Organisation (RTO) Area by Accommodation Type (Type)**
Contains number of establishments, capacity, occupancy rates, guest nights, guest arrivals, length of stay and some ratios of these variables.

The graph on the first worksheet will change to display the RTO and Type you select on the second worksheet. When printing the graph, select a cell rather than the graph so the heading will print.

- **Total Accommodation by Territorial Authority (TA)**
Contains number of establishments, capacity, occupancy rates, guest nights, guest arrivals, length of stay and some ratios of these variables.
- **Origin of Guests and Employment Information by Regional Tourism Organisation (RTO)**
Contains domestic and international guest night variables and employees.

Printing a selection of data in a spreadsheet

If you only want to print out some of the information in a spreadsheet, either select the pages you want in the print box, or hide the data you don't want to print by highlighting the columns or rows of data you don't want, then right click the mouse and select 'Hide'.

Accommodation Survey: April 2007

Table 1

Establishments, Capacity, Guest Nights, Occupancy Rate and Average Stay⁽¹⁾⁽²⁾⁽³⁾
By accommodation type

Accommodation type	Series ref: ACSM	Month												
		2006						2007						
		Apr	May	Jun	Jul	Aug	Sep	Oct	Nov	Dec	Jan	Feb	Mar	Apr
Hotels/resorts														
Number of establishments	S1AA	573	573	569	566	566	566	568	569	570	569	566	568	569
Capacity (000)	S1AB	927	955	908	939	939	922	964	936	967	972	875	979	950
Guest nights (000)	S1AC	831	667	603	727	733	766	852	977	886	1,002	1,041	1,061	852
Occupancy rate (percent)	S1AD	53.6	47.2	44.6	47.9	50.3	52.5	55.7	65.8	52.9	58.8	72.3	67.3	53.1
Average stay (nights)	S1AE	1.7	1.8	1.8	2.0	1.9	1.9	1.8	1.7	1.8	1.9	1.8	1.8	1.8
Motels/motor inns/apartments														
Number of establishments	S1BA	1,715	1,706	1,703	1,703	1,716	1,732	1,745	1,748	1,757	1,760	1,769	1,769	1,769
Capacity (000)	S1BB	789	814	786	814	821	800	834	809	839	840	766	850	827
Guest nights (000)	S1BC	956	637	638	797	742	814	875	902	972	1,242	1,126	1,143	954
Occupancy rate (percent)	S1BD	57.0	43.7	42.9	47.8	46.8	50.5	52.8	58.9	53.3	65.0	72.2	68.1	55.2
Average stay (nights)	S1BE	1.8	1.8	1.8	1.9	2.0	1.8	1.8	1.8	1.8	1.9	1.8	1.8	1.8
Hosted accommodation⁽⁴⁾														
Number of establishments	S1CA	653	598	575	552	566	594	628	658	663	674	680	679	669
Capacity (000)	S1CB	101	97	91	91	94	93	101	100	104	105	95	104	99
Guest nights (000)	S1CC	48	21	21	32	29	31	42	55	64	82	89	74	46
Occupancy rate (percent)	S1CD	25.3	13.0	13.5	17.9	16.7	18.4	22.9	30.5	31.4	39.6	48.5	37.9	24.2
Average stay (nights)	S1CE	1.8	1.9	2.0	2.3	2.3	2.0	1.8	1.7	1.8	1.8	1.8	1.8	1.8
Backpackers/hostels														
Number of establishments	S1DA	437	429	413	405	408	419	436	438	443	442	443	445	441
Capacity (000)	S1DB	734	751	716	735	737	721	762	736	760	760	695	774	750
Guest nights (000)	S1DC	384	276	251	287	276	278	319	390	427	504	483	496	410
Occupancy rate (percent)	S1DD	47.8	33.6	32.1	35.9	34.5	34.9	37.5	47.7	49.8	59.0	60.9	57.3	49.1
Average stay (nights)	S1DE	1.9	2.1	2.0	2.0	2.1	2.0	1.9	1.9	1.8	1.8	1.9	1.9	1.9
Total excluding caravan parks/camping grounds														
Number of establishments	S1XA	3,378	3,306	3,260	3,226	3,256	3,311	3,377	3,413	3,433	3,445	3,458	3,461	3,448
Capacity (000)	S1XB	2,551	2,617	2,501	2,581	2,591	2,535	2,661	2,580	2,670	2,677	2,431	2,708	2,625
Guest nights (000)	S1XC	2,219	1,602	1,514	1,842	1,780	1,890	2,088	2,324	2,348	2,830	2,737	2,773	2,262
Occupancy rate (percent)	S1XD	51.9	40.9	39.3	43.4	43.5	45.6	48.3	57.1	51.3	60.0	68.1	63.5	51.5
Average stay (nights)	S1XE	1.8	1.8	1.9	1.9	2.0	1.9	1.8	1.8	1.8	1.9	1.8	1.8	1.8
Caravan parks/camping grounds														
Number of establishments	S1EA	419	404	400	395	394	399	409	411	419	418	418	416	412
Capacity (000)	S1EB	1,609	1,521	1,446	1,480	1,480	1,441	1,593	1,540	1,622	1,622	1,456	1,605	1,544
Guest nights (000)	S1EC	527	234	189	240	222	307	386	416	862	1,534	755	626	552
Occupancy rate (percent)	S1ED	14.5	8.0	6.6	7.8	7.5	9.7	11.4	13.3	21.8	35.8	23.8	18.2	15.6
Average stay (nights)	S1EE	1.9	1.8	1.9	1.9	1.9	1.8	1.7	1.7	2.2	2.9	1.9	1.8	1.9
Total														
Number of establishments	S19A	3,797	3,710	3,660	3,621	3,650	3,710	3,786	3,824	3,852	3,863	3,876	3,877	3,860
Capacity (000)	S19B	4,160	4,138	3,947	4,061	4,071	3,976	4,255	4,120	4,292	4,299	3,886	4,314	4,169
Guest nights (000)	S19C	2,746	1,836	1,702	2,082	2,002	2,197	2,474	2,740	3,210	4,364	3,493	3,399	2,814
Occupancy rate (percent)	S19D	37.4	28.8	27.3	30.4	30.4	32.6	34.5	40.7	40.1	50.9	51.5	46.7	38.2
Average stay (nights)	S19E	1.8	1.8	1.9	1.9	2.0	1.9	1.8	1.8	1.9	2.1	1.8	1.8	1.8

For footnotes, see end of table.

Accommodation Survey: April 2007

Table 1
continued

Establishments, Capacity, Guest Nights, Occupancy Rate and Average Stay⁽¹⁾⁽²⁾⁽³⁾
By accommodation type

Accommodation type	Series ref: ACSM	Month												
		2006						2007						
		Apr	May	Jun	Jul	Aug	Sep	Oct	Nov	Dec	Jan	Feb	Mar	Apr
Percentage change from the same month of the previous year														
Hotels/resorts														
Number of establishments	S1AA	1.8	2.0	1.2	0.2	0.2	-0.5	-0.9	-1.9	-1.0	-1.2	-1.9	-1.0	-0.7
Capacity	S1AB	4.8	2.2	-0.2	-0.3	-0.4	0.9	1.4	1.2	1.6	2.0	1.4	2.6	2.4
Guest nights	S1AC	-0.7	0.2	-7.4	-6.3	2.5	2.4	6.2	4.2	7.1	6.6	3.4	7.3	2.5
Occupancy rate	S1AD	-6.8	-0.3	-4.5	-4.6	3.7	0.3	3.0	2.5	2.5	6.2	1.4	3.8	-1.0
Average stay (nights)	S1AE	0.3	-0.2	-0.7	-1.5	0.3	0.4	3.7	1.5	3.4	5.9	2.2	5.2	1.8
Motels/motor inns/apartments														
Number of establishments	S1BA	1.5	1.1	2.0	1.7	2.6	2.5	3.0	2.9	2.6	2.6	3.2	3.0	3.1
Capacity	S1BB	2.0	2.3	2.6	2.4	2.8	2.9	3.1	3.3	3.0	1.9	4.2	4.3	4.8
Guest nights	S1BC	3.3	1.9	-3.3	-2.7	3.9	3.1	2.6	4.8	4.6	0.7	5.5	5.9	-0.1
Occupancy rate	S1BD	-3.0	0.3	-5.8	-4.0	1.3	0.4	-0.3	1.5	1.7	0.6	1.1	1.4	-3.0
Average stay (nights)	S1BE	2.6	1.0	1.2	1.3	3.5	-0.5	0.9	2.1	1.6	0.9	1.4	0.1	0.5
Hosted accommodation⁽⁴⁾														
Number of establishments	S1CA	8.7	4.0	2.1	4.5	3.1	4.4	2.3	1.7	0.8	1.0	2.9	3.0	2.5
Capacity	S1CB	9.4	5.4	2.2	5.6	5.0	5.0	4.4	0.9	1.3	-0.1	0.7	-0.5	-1.3
Guest nights	S1CC	13.8	-2.4	-13.7	5.1	-1.1	7.1	9.0	9.8	5.0	-0.3	5.2	7.8	-4.7
Occupancy rate	S1CD	0.9	-6.5	-12.5	3.2	-2.5	2.4	7.3	9.3	4.9	0.3	3.0	8.9	-4.2
Average stay (nights)	S1CE	0.7	8.5	6.4	3.6	10.2	-3.1	2.4	0.9	3.5	-1.1	-0.5	2.8	-1.3
Backpackers/hostels														
Number of establishments	S1DA	6.6	7.8	4.0	3.1	2.0	1.2	0.7	0.7	0.2	1.1	0.7	0.9	0.9
Capacity	S1DB	7.0	7.5	5.9	2.3	1.7	1.0	1.8	1.0	1.1	2.1	1.7	1.6	2.2
Guest nights	S1DC	4.9	1.8	-7.4	-3.4	4.7	6.7	8.8	7.3	2.8	4.3	5.4	6.7	6.9
Occupancy rate	S1DD	1.8	-5.2	-12.6	-1.9	3.5	5.6	7.2	7.0	0.1	2.7	3.2	4.3	2.7
Average stay (nights)	S1DE	-1.2	7.4	5.3	-1.6	0.7	0	0.8	-0.3	-1.9	0.1	3.2	3.9	2.4
Total excluding caravan parks/camping grounds														
Number of establishments	S1XA	3.5	2.6	2.2	2.1	2.2	2.2	1.9	1.5	1.3	1.5	1.9	2.1	2.1
Capacity	S1XB	4.7	3.8	2.5	1.5	1.4	1.7	2.2	1.8	1.9	1.9	2.3	2.7	2.9
Guest nights	S1XC	2.2	1.1	-5.8	-4.1	3.4	3.4	5.1	5.1	5.2	3.4	4.7	6.6	2.0
Occupancy rate	S1XD	-3.4	-1.6	-7.2	-3.8	2.6	1.5	2.8	3.4	1.6	3.1	1.8	3.4	-0.6
Average stay (nights)	S1XE	1.1	1.6	1.1	-0.2	1.8	-0.1	2.1	1.5	1.7	2.4	2.0	2.7	1.3
Caravan parks/camping grounds														
Number of establishments	S1EA	4.2	2.5	2.0	3.1	3.7	2.0	1.2	0.5	0.2	-0.5	-0.7	-0.7	-1.7
Capacity	S1EB	2.0	-0.1	-1.0	-0.4	0.3	-0.8	-2.0	-2.9	-3.2	-3.6	-4.4	-3.7	-4.0
Guest nights	S1EC	11.5	4.6	-14.9	-3.2	0.8	1.9	2.9	2.1	2.8	0.6	11.7	11.5	4.7
Occupancy rate	S1ED	9.2	8.6	-10.2	-0.8	5.9	5.2	7.6	5.7	9.6	7.2	17.4	13.8	7.0
Average stay (nights)	S1EE	2.7	-0.4	-0.1	0.4	-1.8	-2.0	-1.6	-1.3	0.8	-0.8	1.7	4.3	0.6
Total														
Number of establishments	S19A	3.6	2.6	2.1	2.2	2.4	2.1	1.8	1.4	1.2	1.3	1.7	1.8	1.7
Capacity	S19B	3.6	2.3	1.2	0.8	1.0	0.8	0.6	0	-0.1	-0.2	-0.3	0.2	0.2
Guest nights	S19C	3.9	1.5	-6.9	-4.0	3.1	3.2	4.7	4.6	4.6	2.4	6.1	7.5	2.5
Occupancy rate	S19D	-1.1	0.4	-6.6	-3.1	3.2	2.5	4.5	4.9	4.2	4.9	5.8	6.4	2.1
Average stay (nights)	S19E	1.4	1.3	1.0	-0.1	1.4	-0.4	1.5	1.0	1.4	1.3	2.0	3.0	1.2

- (1) Establishments that are temporarily closed for more than 14 days during a month are excluded from the results.
(2) Establishments primarily offering accommodation for periods of one month or more are excluded from the survey.
(3) Monthly capacity shows the number of stay units available and is affected by the number of days in a month.
(4) Hosted accommodation includes private hotels, guest houses, bed and breakfasts, and farmstays.

Table 2

Occupancy Rate Excluding Caravan Parks/Camping Grounds⁽¹⁾
By region

Region	Series ref: ACSM	Month												
		2006									2007			
		Apr	May	Jun	Jul	Aug	Sep	Oct	Nov	Dec	Jan	Feb	Mar	Apr
Occupancy rate (percent)														
Northland	S2RAB	47.3	33.1	29.0	31.1	29.2	34.0	43.0	49.6	47.3	63.0	64.8	57.3	44.3
Auckland	S2RBB	55.7	50.5	50.2	48.6	53.0	54.9	58.8	67.2	56.5	62.1	71.2	71.4	56.8
Waikato	S2RCB	46.4	34.0	36.6	37.3	34.5	38.6	40.2	50.5	46.6	56.4	58.0	56.5	46.1
Bay of Plenty	S2RDB	55.5	44.3	43.6	45.6	45.0	48.2	54.4	60.0	55.7	63.6	66.3	63.5	55.8
Hawke's Bay/Gisborne	S2REB	49.4	37.2	37.9	36.5	38.5	40.9	47.2	51.1	49.5	64.0	64.6	63.5	48.6
Taranaki/Manawatu-Wanganui	S2RFB	39.1	35.0	33.9	44.9	43.2	47.9	40.2	40.5	34.6	42.4	51.7	48.9	39.4
Wellington	S2RGB	58.6	52.3	50.8	56.3	51.3	56.5	58.7	65.6	52.6	57.8	74.8	69.0	56.8
Nelson/Marlborough/Tasman	S2RHB	48.4	32.3	31.0	32.1	31.2	32.7	38.0	51.6	53.9	67.3	72.4	62.1	47.7
Canterbury	S2RIB	52.2	39.1	35.6	40.8	38.5	44.0	48.3	58.7	51.7	58.6	69.9	62.2	51.6
West Coast	S2RJB	44.5	28.1	23.3	25.9	24.7	28.7	36.9	49.5	45.9	58.6	67.1	57.3	45.3
Otago	S2RKB	58.3	42.3	40.1	54.5	59.6	50.3	45.9	58.6	55.7	65.7	73.9	68.3	57.6
Southland	S2RLB	45.4	30.8	24.7	25.7	27.2	29.5	37.9	50.3	46.4	56.4	68.6	61.4	43.8
New Zealand	S2RZB	51.9	40.9	39.3	43.4	43.5	45.6	48.3	57.1	51.3	60.0	68.1	63.5	51.5
Percentage change from the same month of the previous year														
Northland	S2RAB	8.3	-1.1	3.7	3.2	-0.5	2.5	14.0	4.8	-1.2	2.3	2.4	4.3	-6.5
Auckland	S2RBB	-10.3	-3.2	-2.9	-12.3	4.8	1.8	5.2	3.7	1.3	7.7	2.0	5.9	1.9
Waikato	S2RCB	-3.3	-3.1	-4.4	-4.9	0.9	0.1	-2.2	7.3	5.6	6.1	3.1	1.6	-0.8
Bay of Plenty	S2RDB	-0.4	-3.1	-7.9	-6.3	9.2	7.8	3.8	1.6	2.2	1.7	-3.4	3.7	0.4
Hawke's Bay/Gisborne	S2REB	-3.8	-3.6	-0.5	-4.8	4.5	-0.5	1.8	8.9	5.2	8.7	1.1	1.4	-1.7
Taranaki/Manawatu-Wanganui	S2RFB	-3.6	3.8	-9.6	15.1	0.2	7.9	-2.6	-2.9	-3.4	3.6	11.3	6.0	0.8
Wellington	S2RGB	-8.6	-3.1	-6.6	1.1	3.9	1.3	6.0	4.4	10.2	6.4	1.8	-2.9	
Nelson/Marlborough/Tasman	S2RHB	-0.5	-6.6	-10.9	-1.3	-4.5	-2.8	-0.9	4.7	6.6	0.3	2.6	1.5	-1.5
Canterbury	S2RIB	-6.6	-4.2	-20.2	-3.9	-3.0	1.7	-1.6	2.6	2.1	-1.6	1.5	-0.1	-1.1
West Coast	S2RJB	4.8	-1.0	-11.2	-0.7	-0.4	-0.3	0.8	-0.7	-1.3	-0.2	3.3	1.2	1.9
Otago	S2RKB	5.7	5.0	-2.2	-3.7	5.8	-3.1	3.9	3.5	-2.5	0.6	-2.5	4.9	-1.2
Southland	S2RLB	-4.4	3.9	-6.3	-2.7	-3.8	-3.2	2.5	-5.1	1.7	-4.7	-0.2	5.8	-3.6
New Zealand	S2RZB	-3.4	-1.6	-7.2	-3.8	2.6	1.5	2.8	3.4	1.6	3.1	1.8	3.4	-0.6

(1) More detailed information is available from regional tourism organisations or Statistics New Zealand.

Table 3

Total Guest Nights

	Actual series		Seasonally adjusted series ⁽¹⁾⁽²⁾		Trend series ⁽¹⁾⁽³⁾		
	Guest nights (000)	Change from same month previous year (percent)	Guest nights (000)	Change from previous month (percent)	Guest nights (000)	Change from previous month (percent)	
<i>Series ref: ACS</i>	<i>S4A9Z03</i>		<i>S4S9Z03</i>		<i>S4T9Z03</i>		
Month							
2004	Apr	2,690	4.1	2,589 R	2.3 R	2,573 R	0.5 R
	May	1,808	3.9	2,582 R	-0.3 R	2,583 R	0.4 R
	Jun	1,707	14.7	2,621 R	1.5 R	2,592 R	0.3 R
	Jul	2,111	5.6	2,601 R	-0.8 R	2,600 R	0.3 R
	Aug	1,935	4.4	2,572 R	-1.1 R	2,605 R	0.2 R
	Sep	2,187	6.8	2,657 R	3.3 R	2,609 R	0.1 R
	Oct	2,314	2.7	2,554 R	-3.9 R	2,610 R	0.1 R
	Nov	2,652	5.5	2,627 R	2.8 R	2,611 R	0 R
	Dec	3,174	1.3	2,622 R	-0.2 R	2,610 R	0 R
2005	Jan	4,338	4.4	2,651 R	1.1 R	2,609 R	0 R
	Feb	3,212	1.5	2,569 R	-3.1 R	2,608 R	0 R
	Mar	3,389	11.1	2,799 R	8.9 R	2,608 R	0 R
	Apr	2,643	-1.7	2,546 R	-9.0 R	2,607 R	0 R
	May	1,808	0	2,580 R	1.3 R	2,605 R	-0.1 R
	Jun	1,829	7.1	2,802 R	8.6 R	2,603 R	-0.1 R
	Jul	2,169	2.7	2,674 R	-4.6 R	2,601 R	-0.1 R
	Aug	1,942	0.4	2,591 R	-3.1 R	2,599 R	-0.1 R
	Sep	2,129	-2.7	2,580 R	-0.4 R	2,599 R	0 R
	Oct	2,362	2.1	2,608 R	1.1 R	2,598 R	0 R
	Nov	2,619	-1.3	2,587 R	-0.8 R	2,598 R	0 R
	Dec	3,070	-3.3	2,549 R	-1.5 R	2,598 R	0 R
2006	Jan	4,263	-1.7	2,609 R	2.3 R	2,599 R	0 R
	Feb	3,292	2.5	2,623 R	0.6 R	2,601 R	0.1 R
	Mar	3,162	-6.7	2,600 R	-0.9 R	2,605 R	0.2 R
	Apr	2,746	3.9	2,656 R	2.2 R	2,611 R	0.2 R
	May	1,836	1.5	2,623 R	-1.2 R	2,619 R	0.3 R
	Jun	1,702	-6.9	2,605 R	-0.7 R	2,628 R	0.4 R
	Jul	2,082	-4.0	2,566 R	-1.5 R	2,639 R	0.4 R
	Aug	2,002	3.1	2,675 R	4.3 R	2,651 R	0.5 R
	Sep	2,197	3.2	2,657 R	-0.7 R	2,664 R	0.5 R
	Oct	2,474	4.7	2,732 R	2.8 R	2,678 R	0.5 R
	Nov	2,740	4.6	2,708 R	-0.9 R	2,692 R	0.5 R
	Dec	3,210	4.6	2,673 R	-1.3 R	2,707 R	0.5 R
2007	Jan	4,364	2.4	2,668 R	-0.2 R	2,721 R	0.5 R
	Feb	3,493	6.1	2,782 R	4.3 R	2,734 R	0.5 R
	Mar	3,399	7.5	2,789 R	0.2 R	2,746 R	0.4 R
	Apr	2,814	2.5	2,728	-2.2	2,762	0.6

(1) All figures are subject to revision when the seasonal adjustment program is run each period.

(2) The seasonally adjusted series differs from the actual series in that the seasonal changes have been removed.

(3) The trend series differs from the actual series in that both the seasonal and irregular components have been removed.

Symbol:

R revised

Table 4

Seasonally Adjusted and Trend Guest Nights⁽¹⁾
By accommodation type

Accommodation type	Series ref: ACSM	Month												
		2006						2007						
		Apr	May	Jun	Jul	Aug	Sep	Oct	Nov	Dec	Jan	Feb	Mar	Apr
Seasonally adjusted guest nights (000)⁽²⁾														
Hotels/resorts	S4SAZ03	826 R	830 R	828 R	793 R	835 R	837 R	856 R	861 R	859 R	861 R	862 R	871 R	847
Motels/motor inns/apartments	S4SBZ03	898 R	890 R	878 R	867 R	908 R	893 R	915 R	908 R	901 R	901 R	931 R	927 R	900
Hosted accommodation ⁽³⁾	S4SCZ03	50 R	42 R	47 R	48 R	46 R	48 R	50 R	49 R	48 R	49 R	51 R	50 R	48
Backpackers/hostels	S4SDZ03	354 R	348 R	350 R	343 R	361 R	358 R	372 R	370 R	365 R	371 R	376 R	379 R	380
Caravan parks/camping grounds	S4SEZ03	515 R	523 R	485 R	512 R	526 R	524 R	544 R	521 R	512 R	512 R	564 R	552 R	539
Percentage change from previous month														
Hotels/resorts	S4SAZ03	1.6 R	0.5 R	-0.3 R	-4.2 R	5.2 R	0.2 R	2.3 R	0.6 R	-0.2 R	0.2 R	0.1 R	1.0 R	-2.8
Motels/motor inns/apartments	S4SBZ03	2.3 R	-0.9 R	-1.3 R	-1.3 R	4.7 R	-1.6 R	2.4 R	-0.7 R	-0.8 R	0.1 R	3.3 R	-0.4 R	-2.9
Hosted accommodation ⁽³⁾	S4SCZ03	6.7 R	-15.9 R	11.4 R	4.0 R	-5.2 R	4.0 R	5.5 R	-2.4 R	-2.0 R	1.5 R	4.9 R	-2.5 R	-4.5
Backpackers/hostels	S4SDZ03	-0.7 R	-1.7 R	0.6 R	-1.8 R	5.2 R	-0.8 R	3.9 R	-0.6 R	-1.2 R	1.5 R	1.5 R	0.7 R	0.1
Caravan parks/camping grounds	S4SEZ03	4.0 R	1.7 R	-7.3 R	5.5 R	2.9 R	-0.5 R	4.0 R	-4.4 R	-1.6 R	-0.1 R	10.3 R	-2.2 R	-2.4
Guest nights trend (000)⁽⁴⁾														
Hotels/resorts	S4TAZ03	823 R	824 R	825 R	828 R	833 R	841 R	849 R	856 R	860 R	862 R	862 R	861 R	859
Motels/motor inns/apartments	S4TBZ03	883 R	886 R	888 R	891 R	894 R	898 R	901 R	905 R	908 R	911 R	914 R	916 R	919
Hosted accommodation ⁽³⁾	S4TCZ03	48 R	48 R	48 R	48 R	48 R	48 R	48 R	49 R	49 R	49 R	49 R	50 R	50
Backpackers/hostels	S4TDZ03	353 R	351 R	350 R	352 R	356 R	360 R	365 R	368 R	370 R	372 R	375 R	377 R	379
Caravan parks/camping grounds	S4TEZ03	506 R	508 R	510 R	513 R	517 R	521 R	524 R	527 R	531 R	534 R	538 R	541 R	545
Percentage change from previous month														
Hotels/resorts	S4TAZ03	0.2 R	0.1 R	0.1 R	0.3 R	0.7 R	0.9 R	1.0 R	0.9 R	0.5 R	0.2 R	0 R	-0.1 R	-0.2
Motels/motor inns/apartments	S4TBZ03	0.2 R	0.3 R	0.3 R	0.3 R	0.4 R	0.4 R	0.4 R	0.4 R	0.4 R	0.3 R	0.3 R	0.2 R	0.3
Hosted accommodation ⁽³⁾	S4TCZ03	0.3 R	0.2 R	0.2 R	0.2 R	0.2 R	0.3 R	0.4 R	0.5 R	0.5 R	0.4 R	0.4 R	0.2 R	0.5
Backpackers/hostels	S4TDZ03	-0.6 R	-0.6 R	-0.1 R	0.6 R	1.1 R	1.3 R	1.2 R	0.9 R	0.7 R	0.6 R	0.6 R	0.6 R	0.4
Caravan parks/camping grounds	S4TEZ03	0.1 R	0.3 R	0.5 R	0.6 R	0.7 R	0.7 R	0.7 R	0.6 R	0.7 R	0.7 R	0.7 R	0.6 R	0.7

(1) All figures are subject to revision when the seasonal adjustment program is run each period.

(2) The seasonally adjusted series differs from the actual series in that the seasonal changes have been removed.

(3) Hosted accommodation includes private hotels, guest houses, bed and breakfasts, and farmstays.

(4) The trend series differs from the actual series in that both the seasonal and irregular components have been removed.

Symbol:

R revised

Table 5

North Island Guest Nights

	Actual series		Seasonally adjusted series ⁽¹⁾⁽²⁾		Trend series ⁽¹⁾⁽³⁾	
	Guest nights (000)	Change from same month previous year (percent)	Guest nights (000)	Change from previous month (percent)	Guest nights (000)	Change from previous month (percent)
<i>Series ref: ACS</i>	<i>S4A9R03</i>		<i>S4S9R03</i>		<i>S4T9R03</i>	
Month						
2004 Apr	1,541	2.0	1,502 R	2.5 R	1,496 R	0.3 R
May	1,115	1.4	1,502 R	0 R	1,500 R	0.3 R
Jun	1,087	13.0	1,510 R	0.5 R	1,504 R	0.3 R
Jul	1,286	6.5	1,526 R	1.1 R	1,508 R	0.2 R
Aug	1,140	3.0	1,499 R	-1.8 R	1,510 R	0.2 R
Sep	1,281	4.0	1,526 R	1.8 R	1,513 R	0.2 R
Oct	1,388	3.0	1,491 R	-2.3 R	1,515 R	0.2 R
Nov	1,491	3.1	1,509 R	1.2 R	1,518 R	0.2 R
Dec	1,807	2.1	1,529 R	1.4 R	1,521 R	0.2 R
2005 Jan	2,508	3.4	1,550 R	1.4 R	1,524 R	0.2 R
Feb	1,749	0.4	1,488 R	-4.0 R	1,528 R	0.2 R
Mar	1,890	10.5	1,610 R	8.2 R	1,530 R	0.2 R
Apr	1,546	0.3	1,511 R	-6.1 R	1,532 R	0.1 R
May	1,116	0.1	1,504 R	-0.4 R	1,531 R	0 R
Jun	1,126	3.5	1,560 R	3.7 R	1,529 R	-0.1 R
Jul	1,336	3.9	1,582 R	1.4 R	1,526 R	-0.2 R
Aug	1,145	0.4	1,504 R	-4.9 R	1,521 R	-0.3 R
Sep	1,266	-1.2	1,501 R	-0.2 R	1,516 R	-0.3 R
Oct	1,410	1.6	1,514 R	0.8 R	1,510 R	-0.4 R
Nov	1,481	-0.7	1,498 R	-1.1 R	1,505 R	-0.3 R
Dec	1,743	-3.5	1,484 R	-0.9 R	1,501 R	-0.3 R
2006 Jan	2,397	-4.4	1,486 R	0.2 R	1,498 R	-0.2 R
Feb	1,788	2.2	1,518 R	2.1 R	1,498 R	0 R
Mar	1,769	-6.4	1,496 R	-1.4 R	1,501 R	0.2 R
Apr	1,555	0.6	1,528 R	2.1 R	1,506 R	0.4 R
May	1,117	0.1	1,509 R	-1.2 R	1,514 R	0.5 R
Jun	1,087	-3.4	1,503 R	-0.4 R	1,524 R	0.6 R
Jul	1,259	-5.7	1,486 R	-1.1 R	1,534 R	0.7 R
Aug	1,195	4.4	1,570 R	5.6 R	1,545 R	0.7 R
Sep	1,327	4.8	1,570 R	0 R	1,556 R	0.7 R
Oct	1,489	5.6	1,599 R	1.8 R	1,566 R	0.7 R
Nov	1,571	6.1	1,592 R	-0.4 R	1,576 R	0.6 R
Dec	1,825	4.7	1,558 R	-2.1 R	1,585 R	0.6 R
2007 Jan	2,517	5.0	1,561 R	0.2 R	1,593 R	0.5 R
Feb	1,920	7.4	1,630 R	4.4 R	1,601 R	0.5 R
Mar	1,931	9.2	1,628 R	-0.1 R	1,607 R	0.4 R
Apr	1,607	3.3	1,583	-2.8	1,615	0.5

(1) All figures are subject to revision when the seasonal adjustment program is run each period.

(2) The seasonally adjusted series differs from the actual series in that the seasonal changes have been removed.

(3) The trend series differs from the actual series in that both the seasonal and irregular components have been removed.

Symbol:

R revised

Table 6

South Island Guest Nights

	Actual series		Seasonally adjusted series ⁽¹⁾⁽²⁾		Trend series ⁽¹⁾⁽³⁾	
	Guest nights (000)	Change from same month previous year (percent)	Guest nights (000)	Change from previous month (percent)	Guest nights (000)	Change from previous month (percent)
<i>Series ref: ACS</i>	<i>S4A9S03</i>		<i>S4S9S03</i>		<i>S4T9S03</i>	
Month						
2004 Apr	1,150	7.0	1,074 R	1.7 R	1,077 R	0.6 R
May	694	8.3	1,084 R	0.9 R	1,083 R	0.5 R
Jun	620	17.8	1,120 R	3.4 R	1,088 R	0.5 R
Jul	825	4.2	1,077 R	-3.8 R	1,092 R	0.4 R
Aug	795	6.4	1,079 R	0.2 R	1,096 R	0.3 R
Sep	906	10.9	1,135 R	5.2 R	1,098 R	0.2 R
Oct	926	2.3	1,065 R	-6.1 R	1,099 R	0.1 R
Nov	1,162	8.6	1,119 R	5.1 R	1,100 R	0 R
Dec	1,367	0.4	1,095 R	-2.1 R	1,099 R	0 R
2005 Jan	1,830	5.9	1,104 R	0.8 R	1,098 R	-0.1 R
Feb	1,463	2.7	1,082 R	-2.0 R	1,097 R	-0.1 R
Mar	1,499	11.9	1,180 R	9.1 R	1,096 R	-0.1 R
Apr	1,097	-4.6	1,023 R	-13.3 R	1,094 R	-0.1 R
May	692	-0.2	1,079 R	5.5 R	1,093 R	-0.1 R
Jun	703	13.4	1,264 R	17.1 R	1,092 R	-0.1 R
Jul	834	1.0	1,094 R	-13.4 R	1,091 R	-0.1 R
Aug	797	0.3	1,090 R	-0.4 R	1,091 R	0 R
Sep	863	-4.8	1,082 R	-0.7 R	1,092 R	0.1 R
Oct	952	2.8	1,098 R	1.4 R	1,093 R	0.1 R
Nov	1,138	-2.0	1,092 R	-0.5 R	1,095 R	0.2 R
Dec	1,327	-2.9	1,068 R	-2.2 R	1,097 R	0.2 R
2006 Jan	1,866	2.0	1,125 R	5.3 R	1,098 R	0.2 R
Feb	1,504	2.8	1,107 R	-1.6 R	1,100 R	0.2 R
Mar	1,393	-7.1	1,094 R	-1.2 R	1,102 R	0.1 R
Apr	1,190	8.5	1,111 R	1.5 R	1,103 R	0.1 R
May	718	3.8	1,121 R	0.9 R	1,104 R	0.1 R
Jun	615	-12.5	1,103 R	-1.6 R	1,105 R	0.1 R
Jul	823	-1.3	1,085 R	-1.6 R	1,106 R	0.1 R
Aug	807	1.3	1,108 R	2.1 R	1,108 R	0.2 R
Sep	870	0.8	1,089 R	-1.7 R	1,111 R	0.3 R
Oct	985	3.4	1,136 R	4.4 R	1,114 R	0.3 R
Nov	1,168	2.7	1,120 R	-1.4 R	1,119 R	0.4 R
Dec	1,385	4.4	1,118 R	-0.2 R	1,123 R	0.4 R
2007 Jan	1,846	-1.1	1,111 R	-0.7 R	1,128 R	0.4 R
Feb	1,573	4.6	1,157 R	4.2 R	1,132 R	0.4 R
Mar	1,467	5.3	1,152 R	-0.4 R	1,136 R	0.3 R
Apr	1,207	1.4	1,126	-2.3	1,140	0.4

(1) All figures are subject to revision when the seasonal adjustment program is run each period.

(2) The seasonally adjusted series differs from the actual series in that the seasonal changes have been removed.

(3) The trend series differs from the actual series in that both the seasonal and irregular components have been removed.

Symbol:

R revised

Table 7

Regional Guest Nights

Region	Series ref: ACSM	Month												
		2006										2007		
		Apr	May	Jun	Jul	Aug	Sep	Oct	Nov	Dec	Jan	Feb	Mar	Apr
Guest Nights (000)														
Northland	S5RA03	152	83	73	85	74	93	129	138	210	364	205	184	144
Auckland	S5RB03	435	367	348	359	376	395	459	493	481	562	521	570	461
Waikato	S5RC03	246	150	164	191	159	190	206	243	287	408	302	299	249
Bay of Plenty	S5RD03	267	177	172	207	191	209	242	244	342	510	318	307	284
Hawke's Bay/Gisborne	S5RE03	115	66	68	73	75	79	104	100	155	234	136	140	119
Taranaki/Manawatu-Wanganui	S5RF03	128	103	103	155	150	170	141	124	140	191	174	165	134
Wellington	S5RG03	212	172	159	189	169	191	209	231	211	249	264	267	217
Nelson/Marlborough/Tasman	S5RH03	160	87	76	81	79	93	123	157	233	372	255	220	170
Canterbury	S5RI03	449	292	252	310	284	346	402	454	506	617	558	528	455
West Coast	S5RJ03	119	64	51	59	54	70	98	121	135	178	174	151	117
Otago	S5RK03	377	231	204	337	353	316	299	348	418	562	463	450	382
Southland	S5RL03	85	45	32	36	37	44	63	88	94	118	122	119	83
New Zealand	S5RZ03	2,746	1,836	1,702	2,082	2,002	2,197	2,474	2,740	3,210	4,364	3,493	3,399	2,814
Percentage change from the same month of the previous year														
Northland	S5RA03	8.8	-0.8	-1.2	1.1	1.0	4.6	14.3	7.0	5.3	14.2	8.5	5.6	-5.5
Auckland	S5RB03	-4.0	-1.6	-1.1	-14.0	3.7	2.6	10.6	5.6	4.5	6.0	6.9	13.4	6.1
Waikato	S5RC03	-0.7	0.7	-0.2	-1.8	0.8	1.8	-2.7	12.5	1.0	1.9	8.1	6.4	1.1
Bay of Plenty	S5RD03	3.6	-1.5	-6.1	-8.1	8.9	6.0	4.7	1.8	8.6	3.8	4.7	11.4	6.5
Hawke's Bay/Gisborne	S5RE03	6.8	-6.7	-1.3	-2.3	10.0	-3.0	-0.1	7.9	7.8	2.0	-2.6	2.9	2.8
Taranaki/Manawatu-Wanganui	S5RF03	-5.0	2.7	-11.0	4.5	0.9	10.9	-4.6	-4.7	-2.2	-2.7	14.7	7.0	4.4
Wellington	S5RG03	3.2	7.2	-5.1	-1.4	6.7	10.1	11.1	10.9	6.7	7.8	11.3	8.7	2.4
Nelson/Marlborough/Tasman	S5RH03	7.8	-0.4	-6.4	-1.5	-2.7	1.5	4.0	3.2	4.4	-3.4	2.2	4.7	6.0
Canterbury	S5RI03	4.1	5.3	-17.8	-1.5	-0.7	5.1	2.2	3.7	5.6	-1.9	3.9	1.8	1.2
West Coast	S5RJ03	9.3	0.5	-7.6	2.0	7.9	5.2	3.1	2.0	5.1	3.2	11.0	3.1	-1.4
Otago	S5RK03	15.5	4.6	-8.8	-1.5	3.8	-4.3	4.3	1.5	2.8	0.8	4.9	9.7	1.3
Southland	S5RL03	3.7	4.6	-12.4	-2.0	-5.9	-1.1	6.7	2.5	3.6	-4.0	3.0	10.0	-2.3
New Zealand	S5RZ03	3.9	1.5	-6.9	-4.0	3.1	3.2	4.7	4.6	4.6	2.4	6.1	7.5	2.5