

Embargoed until 10:45am – 12 February 2008

## Accommodation Survey: December 2007

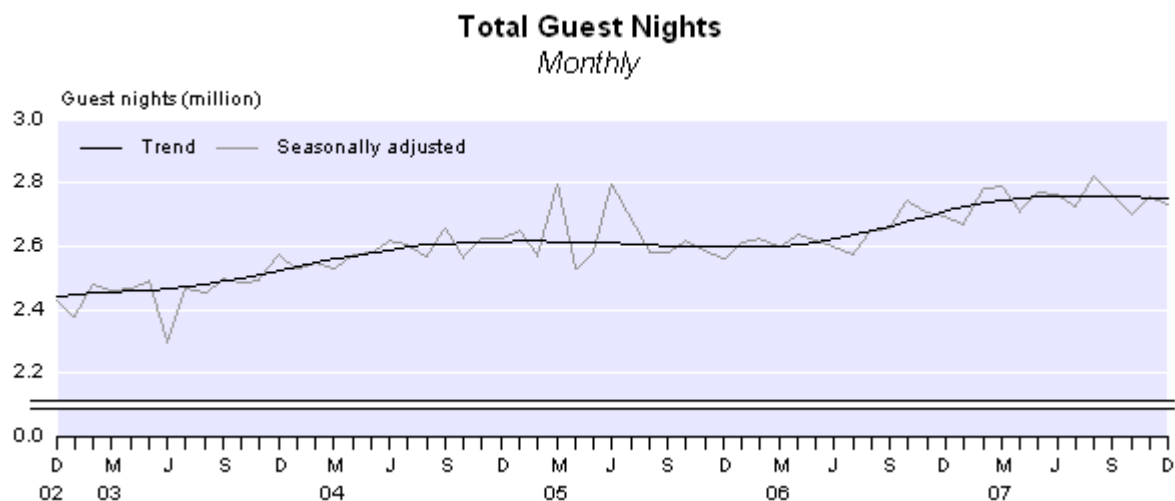
### Highlights

In December 2007:

- Total guest nights were 3.2 million, up 1 percent on December 2006.
- Nine of the twelve regions recorded higher guest nights than in December 2006.
- Guest nights in caravan parks/camping grounds increased 4 percent compared with December 2006.

For the December 2007 year:

- Total guest nights were 32.9 million, a 4 percent increase on the December 2006 year.
- All regions showed an annual increase in guest nights.
- All accommodation types showed higher guest nights than the previous year.



Geoff Bascand  
Government Statistician

12 February 2008  
ISSN 1178-0207

There is a companion Media Release published – [Accommodation Survey: December 2007](#).

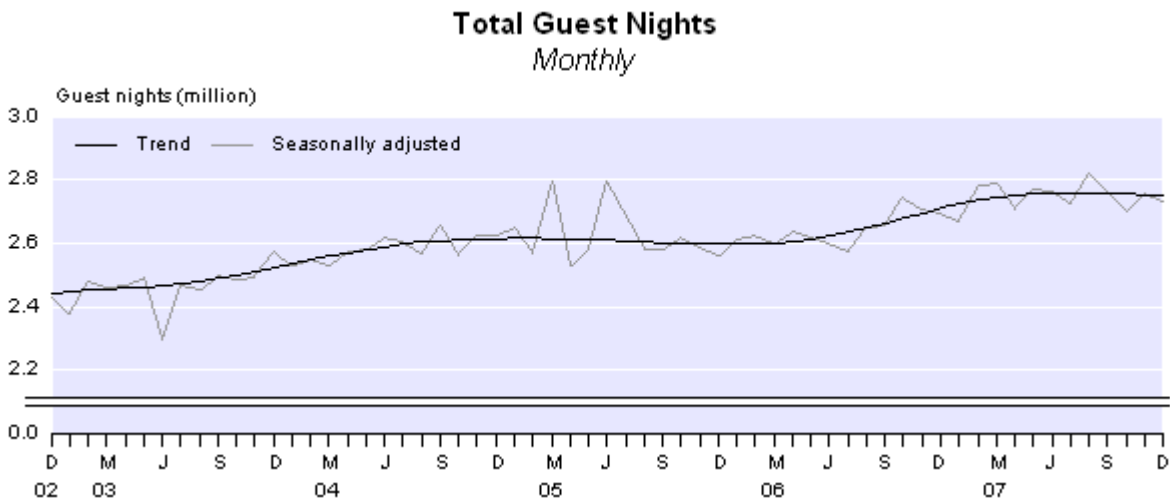
# Commentary

## Total guest nights

Total guest nights in short-term commercial accommodation were 3.2 million in December 2007, an increase of 1 percent compared with December 2006 and 5 percent compared with December 2005.

For the December 2007 year, total guest nights were 32.9 million, a 4 percent increase compared with the previous year. Guest nights for 2006 were 1 percent higher than in 2005.

The trend in total guest nights has flattened in recent months. In December 2007, the trend level was 1 percent higher than in December 2006 and 6 percent higher than in December 2005.

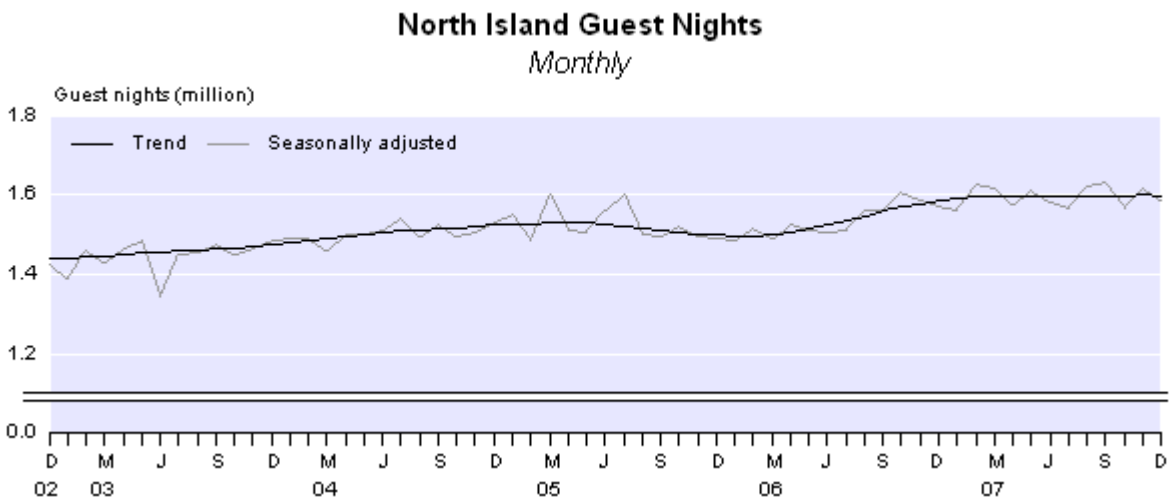


## Guest nights by island

Guest nights in the North Island were 1.8 million in December 2007, a 1 percent increase compared with December 2006 and a 5 percent increase compared with December 2005.

For the year ended December 2007, guest nights in the North Island were 19.1 million, a 4 percent increase compared with 2006.

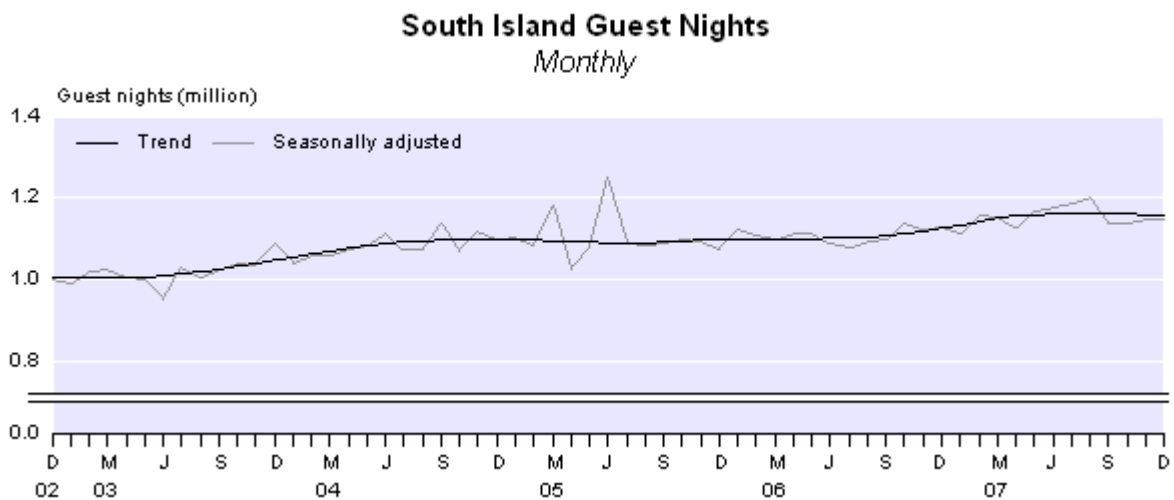
The trend in North Island guest nights has been flat for most of 2007. In December 2007, the trend level was 1 percent higher than in December 2006 and 7 percent higher than in December 2005.



Guest nights in the South Island were 1.4 million in December 2007, a 1 percent increase compared with December 2006 and a 5 percent increase compared with December 2005.

For the year ended December 2007, the South Island recorded 13.8 million guest nights, a 3 percent increase on 2006.

The trend in South Island guest nights showed a relatively strong increase in the first half of 2007. An apparent change in the direction of the trend since August 2007 should be treated with caution, as time series analysis suggests more data is required for the direction of the trend to be confirmed. In December 2007, the trend level was 3 percent higher than in December 2006 and 5 percent higher than in December 2005.



## Guest nights by region

In December 2007, nine of the 12 regions recorded more guest nights than in December 2006. The Canterbury region (up 14,000 or 3 percent) had the largest monthly increase in guest nights, followed by the Bay of Plenty (up 11,000 or 3 percent) and Wellington (up 10,000 or 5 percent). Waikato recorded the largest decrease in guest nights (down 20,000 or 7 percent).

For the 2007 year, all 12 regions recorded higher guest nights than the previous year. The Auckland region recorded the largest annual increase, (up 379,000 or 7 percent), followed by Canterbury (up 184,000 or 4 percent) and Otago (up 162,000 or 4 percent).

## Comparison with short-term overseas visitor arrival statistics

The Hot Off The Press release *External Migration: December 2007* shows that short-term overseas visitor arrivals to New Zealand in December 2007 were down 1,800 (1 percent) from December 2006. This followed a decrease of 1,100 (less than 1 percent) in November 2007 compared with November 2006.

The number of stay days for all visitor arrivals in December 2007 was up 1 percent from December 2006. This followed a decrease of 3 percent in November 2007 compared with November 2006.

New Zealand resident short-term departures for December 2007 were up 9,200 (5 percent) on December 2006. This followed an increase of 11,900 (8 percent) in November 2007 compared with November 2006.

## Origin of guests

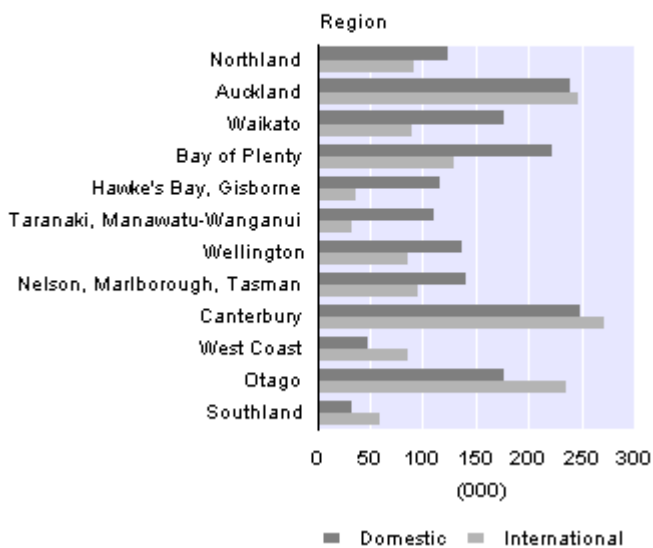
International visitors spent 1.5 million guest nights in short-term commercial accommodation in December 2007. The Canterbury region had the highest number of international guest nights, followed by Auckland and Otago.

New Zealanders accounted for 1.8 million guest nights in December 2007. The Canterbury region also had the highest number of domestic guest nights, followed by Auckland and the Bay of Plenty.

### Domestic and International Guest Nights

*By region*

December 2007



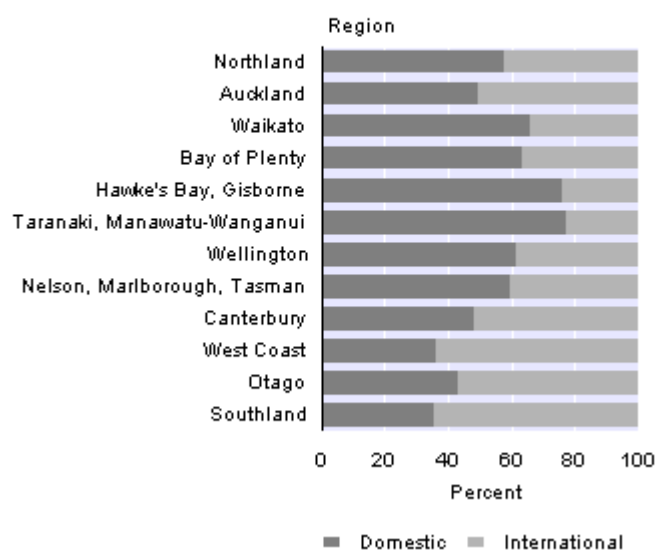
In December 2007, international visitors made up 45 percent of the total guest nights. In the North Island, international visitors contributed 39 percent, whereas in the South Island, the proportion was 54 percent.

The Southland and West Coast regions (64 percent) recorded the highest proportion of international guest nights in December 2007, followed by Otago (57 percent). The highest proportion of domestic guest nights was in the Taranaki/Manawatu-Wanganui region (77 percent), followed by the Hawke's Bay/Gisborne region (76 percent).

## Domestic and International Share of Guest Nights

*By region*

December 2007



## Survey change

From the November 2007 survey month, information on domestic and international guest nights is available on a monthly basis. Previous information on 'origin of guest breakdown by country' is no longer available. This is the first stage of changes being made following a review on the Accommodation Survey, which aims to balance the need for high-quality information against the need to reduce respondent load.

In December 2007, there was a response rate of 65 percent to the Accommodation Survey question on 'origin of guests'. Previously, the response rate for this question ranged between 55 and 60 percent. Figures for those establishments that failed to respond have been imputed (see Non-response imputation). Such high levels of imputation can affect data quality, especially for regional statistics and/or statistics by accommodation type.

## Guest nights by accommodation type

In December 2007, three of the five accommodation types showed higher guest nights than in December 2006. The largest increase was for caravan parks/camping grounds, up 32,000 or 4 percent. The largest decrease was for hotels, down 12,000 or 1 percent.

Motels had the largest share of total guest nights (30 percent) in December 2007, followed by caravan parks/camping grounds (28 percent) and hotels (27 percent).

For the year ended December 2007, all five accommodation types had higher guest nights than in 2006. Hotels had the largest increase, up 339,000 or 3 percent, followed by caravan parks/camping grounds, up 320,000 or 5 percent.

Motels also had the largest share of total guest nights (33 percent) for the 2007 year, followed by hotels (31 percent) and caravan parks/camping grounds (20 percent).

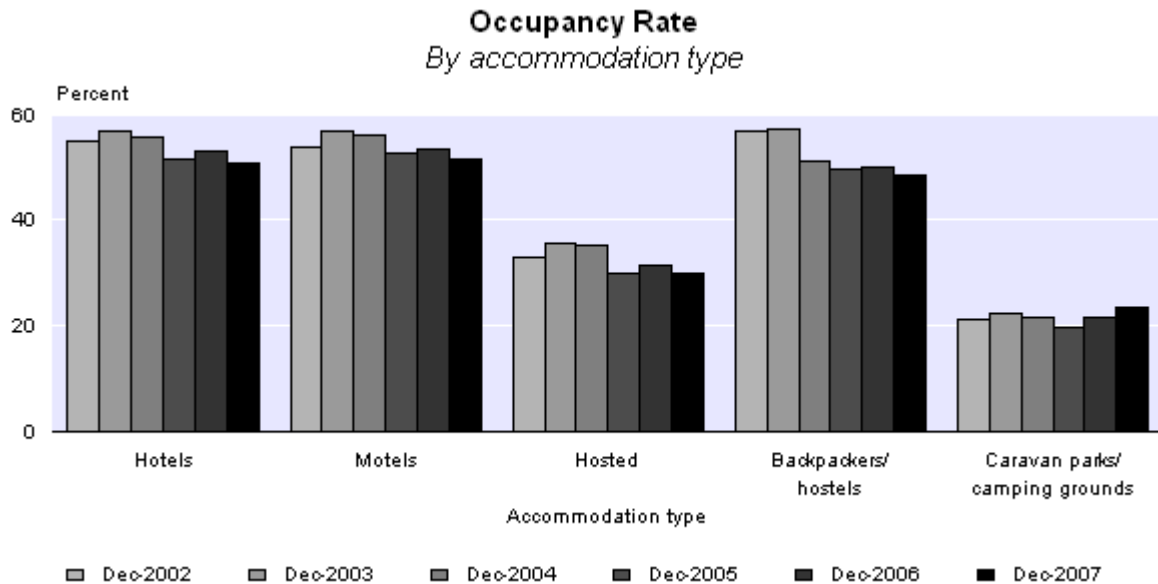
## Occupancy rate

In December 2007, the occupancy rate, excluding caravan parks/camping grounds, was 50 percent compared with 51 percent in December 2006.

Accommodation capacity, excluding caravan parks/camping grounds, was 3 percent above the December 2006 level.

Motels had the highest occupancy rate (52 percent) of all the accommodation types in December 2007, followed by hotels (51 percent) and backpackers/hostels (48 percent).

Excluding the caravan parks/camping grounds category, the Otago and Auckland regions had the highest occupancy rates (54 percent) in December 2007, followed by the Wellington region (53 percent).



## Non-response imputation

When respondents do not answer questions in the Accommodation Survey, Statistics New Zealand estimates the missing information based on data from similar establishments in the same and/or similar areas. For more information, please refer to the Technical notes of this release or contact Statistics NZ.

## Response rates by accommodation type for December 2007

Accommodation type	Percentage of establishments responding to questions on guest nights, guest arrivals and stay unit nights	Percentage of the guest night estimate from establishments that responded to the question on guest nights	Percentage of the origin of guest estimate from establishments that responded to the questions on the origin of guests
Hotels	79	90	66
Motels	79	81	64
Hosted	81	83	66
Backpackers/hostels	78	84	56
Caravan parks / camping grounds	80	87	69
<b>Total</b>	<b>79</b>	<b>86</b>	<b>65</b>

## Survey sponsorship

The Accommodation Survey is a monthly survey undertaken by Statistics NZ and sponsored by the Ministry of Tourism.

For technical information contact:  
Brylee Wayman or Tehseen Islam  
Christchurch 03 964 8700  
**Email:** [info@stats.govt.nz](mailto:info@stats.govt.nz)

## **Technical notes**

### **Population**

The target population for this survey is all 'geographic units' (called 'establishments' in this publication) that are classified as short-term (less than one month) commercial accommodation providers operating in New Zealand. In terms of the Australian and New Zealand Standard Industrial Classification (ANZSIC), the target population is taken from class 5710 (accommodation), and the part of class 5720 (pubs, taverns and bars) that also provides accommodation.

The survey frame is all short-term commercial accommodation-providing geographic units belonging to an economically significant 'enterprise'. Economic significance is generally determined as being GST registered and having a turnover of at least \$30,000 per annum.

### **Survey errors**

This survey aims for 100 percent coverage of the population (a full census). In practice, however, an overall response rate of between 76 and 80 percent is usually achieved. The remaining units are given imputed values based upon the characteristics of similar establishments in the same or similar regions. Imputation introduces unknown errors into the estimates, and users of the data should bear this in mind. The size of these unknown errors is difficult to quantify.

Other errors occur for reasons such as respondent error, frame quality and errors in processing. While every effort is made to minimise these errors, they will still occur. It is not possible to quantify their effect.

### **Trend estimates**

For any series, the survey estimates can be broken down into three components: trend, seasonal and irregular. While seasonally adjusted series have had the seasonal component removed, the trend series have had both the seasonal and the irregular components removed. Trend estimates reveal the underlying direction of movement in a series, and are likely to indicate turning points more accurately than seasonally adjusted estimates.

The accommodation trend series are calculated using the X-12-ARIMA seasonal adjustment package. They are based on optimal moving averages of the seasonally adjusted series, with an adjustment for outlying values. The X-12-ARIMA package is an updated version of X-11-ARIMA, developed by the U.S. Census Bureau.

The trend estimates towards the end of the series incorporate new data as it becomes available, and can therefore change as more observations are added to the series. Revisions can be particularly large if an observation is treated as an outlier in one month, but is found to be part of the underlying trend as further observations are added to the series. All trend estimates are subject to revisions each month, but normally only the last two or three estimates are likely to be substantially altered.

### **Trend estimates versus month-on-month comparisons**

Trend estimates reveal the underlying direction of the movement in a series. In contrast, comparisons between one month and the same month in the previous year(s) do not take account of data recorded in between these periods, and are subject to one-off fluctuations. Reasons for fluctuations include changes in the timing of holidays, international crises, and large sporting and cultural events.

## Seasonally adjusted estimates

The X-12-ARIMA package has been used to produce the seasonally adjusted estimates referred to in the Commentary text. Seasonal adjustment aims to eliminate the impact of regular seasonal events. These may be due to climatic effects (such as more guests staying in camping grounds during the summer) or calendar effects (such as holidays). This makes the data for adjacent months more comparable. All seasonally adjusted figures are subject to revision each month.

Further information about [seasonal adjustment](#) is available on the Statistics New Zealand website.

## Classification of accommodation type

The predominant capacity provided determines the accommodation type. For instance, if a business provides both motel and camping ground accommodation, but the majority of its stay units are motel rooms, then it would be classified as a motel. The classification system used is the New Zealand Accommodation Classification, broadly defined below:

- Hotels: includes both hotels and resorts
- Motels: includes motor inns, apartments and motels
- Hosted: includes private hotels, guest houses, bed and breakfasts, and holiday farm (farmstay) accommodation
- Backpackers/hostels
- Caravan parks/camping grounds.

Further information on the classification system is available on request.

## Origin of guests

From November 2007, information on total domestic and international guest nights will be available on a monthly basis but the breakdown by region or country will no longer be available.

## **Other definitions**

### **Business frame**

A register (maintained by Statistics NZ) of all economically significant businesses operating in New Zealand from which the survey population is drawn.

### **Establishment**

The smallest statistical unit operating within a single physical location and owned by a single enterprise. The term is used to represent what is usually called the 'geographic unit' in other Statistics NZ publications.

### **Guest night**

A guest night is equivalent to one guest spending one night at an establishment. For example, a motel with 15 guests spending two nights would report provision of 30 guest nights of accommodation.

### **Stay unit**

The term used to describe the unit of accommodation that is available to be charged out to guests (for example a powered site in a caravan park, a bed in a backpackers, a room in a hotel or motel).

### **Capacity (stay unit nights available)**

This is the basic measure of an establishment's accommodation capacity. It is defined as one stay unit multiplied by one night. For example, 10 units in a motel available for guest use (whether occupied or not) for the full 31 days in July would have an accommodation capacity of 310 stay unit nights.

### **Occupancy rate**

This derived variable is calculated by dividing stay unit nights occupied by stay unit nights available. In the case of the motel above, if six of its 10 units were occupied every night in July, it would have  $6 \times 31 = 186$  stay unit nights occupied, and its occupancy rate would be 60 percent.

### **Average length of stay**

This derived variable is calculated by dividing total guest nights by total guest first nights.

## **More information**

For more information, follow the [link](#) from the Technical notes of this release on the Statistics NZ website.

## **Confidentiality**

Data collected and information contained in this publication must conform to the provisions of the Statistics Act 1975. This requires that published information maintains the confidentiality of individual respondents.

## **Copyright**

Information obtained from Statistics NZ may be freely used, reproduced, or quoted unless otherwise specified. In all cases Statistics NZ must be acknowledged as the source.

## **Liability**

While care has been used in processing, analysing and extracting information, Statistics NZ gives no warranty that the information supplied is free from error. Statistics NZ shall not be liable for any loss suffered through the use, directly or indirectly, of any information, product or service.

## **Timing**

Timed statistical releases are delivered using postal and electronic services provided by third parties. Delivery of these releases may be delayed by circumstances outside the control of Statistics NZ. Statistics NZ accepts no responsibility for any such delays.

### **Next release ...**

*Accommodation Survey: January 2008* will be released on 12 March 2008.

Statistics New Zealand: The first source of independent information for your key decisions.

## Tables

The following tables can be downloaded from the Statistics New Zealand website in Excel format. If you do not have access to Excel, you may use the [Excel file viewer](#) to view, print and export the contents of the file.

### List of tables

1. Establishments, capacity, guest nights, occupancy rate and average stay, by accommodation type
2. Occupancy rate excluding caravan parks/camping grounds, by region
3. Total guest nights
4. Seasonally adjusted and trend guest nights, by accommodation type
5. North Island guest nights
6. South Island guest nights
7. Regional guest nights

**Accommodation Survey: December 2007**

Table 1

**Establishments, Capacity, Guest Nights, Occupancy Rate and Average Stay<sup>(1)(2)(3)(5)</sup>**  
*By accommodation type*

Accommodation type	Series ref: ACSM	Month												
		2006	2007											
		Dec	Jan	Feb	Mar	Apr	May	Jun	Jul	Aug	Sep	Oct	Nov	Dec
<b>Hotels/resorts</b>														
Number of establishments	S1AA	570	569	566	568	569	572	568	571	572	574	572	579	579
Capacity (000)	S1AB	967	972	875	979	950	968	937	978	984	946	984	960	992
Guest nights (000)	S1AC	886	1,002	1,041	1,061	852	682	629	780	769	785	845	997	874
Occupancy rate (percent)	S1AD	52.9	58.8	72.3	67.3	53.1	47.5	44.1	48.3	49.3	50.4	53.4	65.2	50.8
Average stay (nights)	S1AE	1.8	1.9	1.8	1.8	1.8	1.8	1.8	2.0	1.9	1.9	1.8	1.8	1.8
<b>Motels/motor inns/apartments</b>														
Number of establishments	S1BA	1,757	1,760	1,769	1,769	1,769	1,767	1,755	1,756	1,774	1,777	1,791	1,801	1,810
Capacity (000)	S1BB	839	840	766	850	827	856	826	859	862	835	866	841	870
Guest nights (000)	S1BC	972	1,242	1,126	1,143	954	682	671	821	791	835	863	922	969
Occupancy rate (percent)	S1BD	53.3	65.0	72.2	68.1	55.2	44.4	42.4	46.5	47.0	49.6	51.2	57.8	51.6
Average stay (nights)	S1BE	1.8	1.9	1.8	1.8	1.8	1.8	1.8	1.9	2.0	1.9	1.8	1.8	1.8
<b>Hosted accommodation<sup>(4)</sup></b>														
Number of establishments	S1CA	663	674	680	679	669	615	583	561	579	620	663	695	711
Capacity (000)	S1CB	104	105	95	104	99	96	89	90	92	95	104	103	109
Guest nights (000)	S1CC	64	82	89	74	46	23	21	28	29	30	38	55	65
Occupancy rate (percent)	S1CD	31.4	39.6	48.5	37.9	24.2	14.2	12.9	16.1	17.2	17.2	20.8	29.4	30.1
Average stay (nights)	S1CE	1.8	1.8	1.8	1.8	1.8	1.9	2.0	2.2	2.3	2.0	1.8	1.8	1.8
<b>Backpackers/hostels</b>														
Number of establishments	S1DA	443	442	443	445	441	430	414	411	412	426	445	446	451
Capacity (000)	S1DB	760	760	695	774	750	760	723	747	758	744	781	748	792
Guest nights (000)	S1DC	427	504	483	496	410	294	279	322	301	307	314	391	436
Occupancy rate (percent)	S1DD	49.8	59.0	60.9	57.3	49.1	35.5	35.2	38.6	35.5	37.3	35.7	47.0	48.5
Average stay (nights)	S1DE	1.8	1.8	1.9	1.9	1.9	2.0	2.0	2.2	2.1	2.1	2.0	2.0	1.9
<b>Total excluding caravan parks/camping grounds</b>														
Number of establishments	S1XA	3,433	3,445	3,458	3,461	3,448	3,384	3,320	3,299	3,337	3,397	3,471	3,521	3,551
Capacity (000)	S1XB	2,670	2,677	2,431	2,708	2,625	2,681	2,575	2,674	2,696	2,620	2,736	2,652	2,763
Guest nights (000)	S1XC	2,348	2,830	2,737	2,773	2,262	1,681	1,600	1,951	1,889	1,957	2,060	2,365	2,344
Occupancy rate (percent)	S1XD	51.3	60.0	68.1	63.5	51.5	41.9	40.0	43.9	43.6	45.2	46.4	56.3	49.6
Average stay (nights)	S1XE	1.8	1.9	1.8	1.8	1.8	1.8	1.9	2.0	2.0	1.9	1.8	1.8	1.8
<b>Caravan parks/camping grounds</b>														
Number of establishments	S1EA	419	418	418	416	412	396	393	387	386	393	407	416	419
Capacity (000)	S1EB	1,622	1,622	1,456	1,605	1,544	1,457	1,405	1,442	1,451	1,430	1,593	1,568	1,629
Guest nights (000)	S1EC	862	1,534	755	626	552	261	210	254	242	329	379	429	894
Occupancy rate (percent)	S1ED	21.8	35.8	23.8	18.2	15.6	9.3	7.4	8.1	8.0	10.6	11.0	13.1	23.5
Average stay (nights)	S1EE	2.2	2.9	1.9	1.8	1.9	1.8	1.9	2.0	1.9	1.8	1.8	1.7	2.1
<b>Total</b>														
Number of establishments	S19A	3,852	3,863	3,876	3,877	3,860	3,780	3,713	3,686	3,723	3,790	3,878	3,937	3,970
Capacity (000)	S19B	4,292	4,299	3,886	4,314	4,169	4,138	3,980	4,116	4,148	4,050	4,329	4,220	4,391
Guest nights (000)	S19C	3,210	4,364	3,493	3,399	2,814	1,942	1,809	2,205	2,131	2,286	2,439	2,795	3,239
Occupancy rate (percent)	S19D	40.1	50.9	51.5	46.7	38.2	30.4	28.5	31.4	31.1	33.0	33.4	40.3	39.9
Average stay (nights)	S19E	1.9	2.1	1.8	1.8	1.8	1.8	1.9	2.0	2.0	1.9	1.8	1.8	1.9

For footnotes, see end of table.

**Accommodation Survey: December 2007**

Table 1  
continued

**Establishments, Capacity, Guest Nights, Occupancy Rate and Average Stay<sup>(1)(2)(3)(5)</sup>**  
*By accommodation type*

Accommodation type	Series ref: ACSM	Month												
		2006	2007											
		Dec	Jan	Feb	Mar	Apr	May	Jun	Jul	Aug	Sep	Oct	Nov	Dec
<b>Percentage change from the same month of the previous year</b>														
<b>Hotels/resorts</b>														
Number of establishments	S1AA	-1.0	-1.2	-1.9	-1.0	-0.7	-0.2	-0.2	0.9	1.1	1.4	0.7	1.8	1.6
Capacity	S1AB	1.6	2.0	1.4	2.6	2.4	1.4	3.2	4.1	4.8	2.5	2.1	2.6	2.6
Guest nights	S1AC	7.1	6.6	3.4	7.3	2.5	2.1	4.3	7.4	5.0	2.4	-0.8	2.1	-1.3
Occupancy rate	S1AD	2.5	6.2	1.4	3.8	-1.0	0.5	-1.0	0.9	-1.9	-4.0	-4.0	-1.0	-3.9
Average stay (nights)	S1AE	3.4	5.9	2.2	5.2	1.8	1.4	-2.1	1.2	0.5	-1.1	1.2	5.0	1.4
<b>Motels/motor inns/apartments</b>														
Number of establishments	S1BA	2.6	2.6	3.2	3.0	3.1	3.6	3.1	3.1	3.4	2.6	2.6	3.0	3.0
Capacity	S1BB	3.0	1.9	4.2	4.3	4.8	5.2	5.0	5.5	5.0	4.4	3.8	4.0	3.7
Guest nights	S1BC	4.6	0.7	5.5	5.9	-0.1	7.1	5.0	3.0	6.6	2.6	-1.4	2.2	-0.3
Occupancy rate	S1BD	1.7	0.6	1.1	1.4	-3.0	1.6	-1.1	-2.6	0.5	-1.8	-3.0	-1.9	-3.2
Average stay (nights)	S1BE	1.6	0.9	1.4	0.1	0.5	1.3	-0.3	2.0	0.6	1.7	0.1	0.2	3.0
<b>Hosted accommodation<sup>(4)</sup></b>														
Number of establishments	S1CA	0.8	1.0	2.9	3.0	2.5	2.8	1.4	1.6	2.3	4.4	5.6	5.6	7.2
Capacity	S1CB	1.3	-0.1	0.7	-0.5	-1.3	-0.9	-1.7	-1.9	-2.2	2.3	2.7	3.0	4.3
Guest nights	S1CC	5.0	-0.3	5.2	7.8	-4.7	5.0	-0.5	-12.6	-0.6	-5.6	-8.5	0.6	2.8
Occupancy rate	S1CD	4.9	0.3	3.0	8.9	-4.2	9.1	-4.4	-10.5	2.7	-6.1	-9.2	-3.5	-4.1
Average stay (nights)	S1CE	3.5	-1.1	-0.5	2.8	-1.3	-0.3	1.1	-3.4	0.1	-0.7	1.5	2.7	-1.5
<b>Backpackers/hostels</b>														
Number of establishments	S1DA	0.2	1.1	0.7	0.9	0.9	0.2	0.2	1.5	1.0	1.7	2.1	1.8	1.8
Capacity	S1DB	1.1	2.1	1.7	1.6	2.2	1.3	1.0	1.6	2.8	3.2	2.5	1.6	4.2
Guest nights	S1DC	2.8	4.3	5.4	6.7	6.9	6.6	11.2	12.1	8.8	10.3	-1.6	0.2	2.1
Occupancy rate	S1DD	0.1	2.7	3.2	4.3	2.7	5.9	9.7	7.5	2.7	6.8	-4.9	-1.6	-2.7
Average stay (nights)	S1DE	-1.9	0.1	3.2	3.9	2.4	-3.3	1.1	10.9	-0.2	2.8	3.7	2.2	1.7
<b>Total excluding caravan parks/camping grounds</b>														
Number of establishments	S1XA	1.3	1.5	1.9	2.1	2.1	2.4	1.8	2.3	2.5	2.6	2.8	3.2	3.4
Capacity	S1XB	1.9	1.9	2.3	2.7	2.9	2.5	2.9	3.6	4.1	3.3	2.8	2.8	3.5
Guest nights	S1XC	5.2	3.4	4.7	6.6	2.0	4.9	5.7	5.9	6.2	3.5	-1.3	1.8	-0.2
Occupancy rate	S1XD	1.6	3.1	1.8	3.4	-0.6	2.4	1.6	1.3	0.3	-0.9	-3.9	-1.5	-3.4
Average stay (nights)	S1XE	1.7	2.4	2.0	2.7	1.3	0.6	-0.7	3.0	0.4	0.7	1.0	2.6	2.1
<b>Caravan parks/camping grounds</b>														
Number of establishments	S1EA	0.2	-0.5	-0.7	-0.7	-1.7	-2.0	-1.8	-2.0	-2.0	-1.5	-0.5	1.2	0
Capacity	S1EB	-3.2	-3.6	-4.4	-3.7	-4.0	-4.2	-2.8	-2.6	-1.9	-0.7	0	1.8	0.4
Guest nights	S1EC	2.8	0.6	11.7	11.5	4.7	11.6	11.1	6.0	8.8	7.3	-2.0	3.3	3.7
Occupancy rate	S1ED	9.6	7.2	17.4	13.8	7.0	17.3	12.0	4.0	6.9	9.0	-3.4	-1.4	7.7
Average stay (nights)	S1EE	0.8	-0.8	1.7	4.3	0.6	5.3	0.4	3.9	3.4	0.7	2.9	1.3	-2.5
<b>Total</b>														
Number of establishments	S19A	1.2	1.3	1.7	1.8	1.7	1.9	1.4	1.8	2.0	2.2	2.4	3.0	3.1
Capacity	S19B	-0.1	-0.2	-0.3	0.2	0.2	0	0.8	1.4	1.9	1.9	1.7	2.4	2.3
Guest nights	S19C	4.6	2.4	6.1	7.5	2.5	5.8	6.3	5.9	6.4	4.1	-1.4	2.0	0.9
Occupancy rate	S19D	4.2	4.9	5.8	6.4	2.1	5.7	4.1	3.3	2.5	1.2	-3.2	-1.2	-0.7
Average stay (nights)	S19E	1.4	1.3	2.0	3.0	1.2	1.2	-0.6	3.1	0.7	0.7	1.4	2.4	1.1

- (1) Establishments that are temporarily closed for more than 14 days during a month are excluded from the results.  
(2) Establishments primarily offering accommodation for periods of one month or more are excluded from the survey.  
(3) Monthly capacity shows the number of stay units available and is affected by the number of days in a month.  
(4) Hosted accommodation includes private hotels, guest houses, bed and breakfasts, and farmstays.  
(5) Percentage changes are calculated on unrounded figures.

Table 2

**Occupancy Rate Excluding Caravan Parks/Camping Grounds<sup>(1)</sup>**  
By region

Region	Series ref: ACSM	Month												
		2006	2007											
		Dec	Jan	Feb	Mar	Apr	May	Jun	Jul	Aug	Sep	Oct	Nov	Dec
<b>Occupancy rate (percent)</b>														
Northland	S2RAB	47.3	63.0	64.8	57.3	44.3	33.9	29.4	30.6	28.1	32.4	39.4	44.6	46.1
Auckland	S2RBB	56.5	62.1	71.2	71.4	56.8	52.1	52.8	52.2	53.8	54.8	56.6	69.5	53.9
Waikato	S2RCB	46.6	56.4	58.0	56.5	46.1	36.7	36.0	38.5	36.3	41.0	40.3	46.3	42.0
Bay of Plenty	S2RDB	55.7	63.6	66.3	63.5	55.8	46.2	41.1	45.4	38.9	48.0	50.5	56.0	51.1
Hawke's Bay/Gisborne	S2REB	49.5	64.0	64.6	63.5	48.6	38.9	37.9	37.7	37.3	40.5	46.4	47.3	49.2
Taranaki/Manawatu-Wanganui	S2RFB	34.6	42.4	51.7	48.9	39.4	35.6	33.2	39.6	43.3	43.7	36.2	40.0	33.4
Wellington	S2RGB	52.6	57.8	74.8	69.0	56.8	50.7	48.9	46.2	48.2	54.5	52.7	66.0	53.0
Nelson/Marlborough/Tasman	S2RHB	53.9	67.3	72.4	62.1	47.7	34.0	31.7	30.9	31.7	32.6	36.4	49.1	51.3
Canterbury	S2RIB	51.7	58.6	69.9	62.2	51.6	40.4	37.9	43.1	41.3	43.5	47.9	58.3	51.0
West Coast	S2RJB	45.9	58.6	67.1	57.3	45.3	28.5	24.6	26.6	25.4	28.4	36.0	47.6	45.7
Otago	S2RKB	55.7	65.7	73.9	68.3	57.6	41.6	40.6	61.2	61.1	51.3	46.6	58.9	54.4
Southland	S2RLB	46.4	56.4	68.6	61.4	43.8	31.5	24.4	24.5	25.6	28.3	33.9	50.5	47.6
<b>New Zealand</b>	<b>S2RZB</b>	<b>51.3</b>	<b>60.0</b>	<b>68.1</b>	<b>63.5</b>	<b>51.5</b>	<b>41.9</b>	<b>40.0</b>	<b>43.9</b>	<b>43.6</b>	<b>45.2</b>	<b>46.4</b>	<b>56.3</b>	<b>49.6</b>
<b>Percentage change from the same month of the previous year</b>														
Northland	S2RAB	-1.2	2.3	2.4	4.3	-6.5	2.6	1.6	-1.7	-4.0	-4.6	-8.3	-10.0	-2.7
Auckland	S2RBB	1.3	7.7	2.0	5.9	1.9	3.0	5.2	7.3	1.7	-0.1	-3.7	3.5	-4.6
Waikato	S2RCB	5.6	6.1	3.1	1.6	-0.8	7.9	-1.6	3.3	5.3	6.3	0.2	-8.2	-9.9
Bay of Plenty	S2RDB	2.2	1.7	-3.4	3.7	0.4	4.4	-5.8	-0.6	-13.5	-0.4	-7.1	-6.7	-8.3
Hawke's Bay/Gisborne	S2REB	5.2	8.7	1.1	1.4	-1.7	4.3	0	3.5	-3.2	-1.0	-1.8	-7.5	-0.7
Taranaki/Manawatu-Wanganui	S2RFB	-3.4	3.6	11.3	6.0	0.8	1.6	-2.2	-11.9	0.1	-8.8	-9.8	-1.2	-3.5
Wellington	S2RGB	4.4	10.2	6.4	1.8	-2.9	-3.1	-3.6	-18.1	-6.0	-3.5	-10.2	0.6	0.7
Nelson/Marlborough/Tasman	S2RHB	6.6	0.3	2.6	1.5	-1.5	5.3	2.1	-3.7	1.8	-0.4	-4.4	-4.7	-4.8
Canterbury	S2RIB	2.1	-1.6	1.5	-0.1	-1.1	3.4	6.5	5.6	7.4	-1.2	-0.9	-0.7	-1.3
West Coast	S2RJB	-1.3	-0.2	3.3	1.2	1.9	1.5	5.8	2.6	2.8	-0.8	-2.5	-3.7	-0.5
Otago	S2RKB	-2.5	0.6	-2.5	4.9	-1.2	-1.6	1.3	12.2	2.6	1.9	1.5	0.5	-2.3
Southland	S2RLB	1.7	-4.7	-0.2	5.8	-3.6	2.2	-0.9	-4.9	-5.6	-4.1	-10.6	0.5	2.4
<b>New Zealand</b>	<b>S2RZB</b>	<b>1.6</b>	<b>3.1</b>	<b>1.8</b>	<b>3.4</b>	<b>-0.6</b>	<b>2.4</b>	<b>1.6</b>	<b>1.3</b>	<b>0.3</b>	<b>-0.9</b>	<b>-3.9</b>	<b>-1.5</b>	<b>-3.4</b>

(1) More detailed information is available from regional tourism organisations or Statistics New Zealand.

Table 3

## Total Guest Nights

	Actual series		Seasonally adjusted series <sup>(1)(2)</sup>		Trend series <sup>(1)(3)</sup>	
	Guest nights (000)	Change from same month previous year (percent)	Guest nights (000)	Change from previous month (percent)	Guest nights (000)	Change from previous month (percent)
<i>Series ref: ACS</i>	<i>S4A9Z03</i>		<i>S4S9Z03</i>		<i>S4T9Z03</i>	
<b>Month</b>						
2004 Dec	3,174	1.3	2,629 R	0 R	2,616 R	0 R
2005 Jan	4,338	4.4	2,653 R	0.9 R	2,616 R	0 R
Feb	3,212	1.5	2,570 R	-3.1 R	2,616 R	0 R
Mar	3,389	11.1	2,799 R	8.9 R	2,616 R	0 R
Apr	2,643	-1.7	2,532 R	-9.5 R	2,615 R	0 R
May	1,808	0	2,579 R	1.9 R	2,613 R	-0.1 R
Jun	1,829	7.1	2,798 R	8.5 R	2,610 R	-0.1 R
Jul	2,169	2.7	2,680 R	-4.2 R	2,607 R	-0.1 R
Aug	1,942	0.4	2,580 R	-3.8 R	2,605 R	-0.1 R
Sep	2,129	-2.7	2,580 R	0 R	2,603 R	-0.1 R
Oct	2,362	2.1	2,618 R	1.5 R	2,601 R	-0.1 R
Nov	2,619	-1.3	2,587 R	-1.2 R	2,600 R	0 R
Dec	3,070	-3.3	2,562 R	-1.0 R	2,599 R	0 R
2006 Jan	4,263	-1.7	2,610 R	1.9 R	2,598 R	0 R
Feb	3,292	2.5	2,624 R	0.5 R	2,599 R	0 R
Mar	3,162	-6.7	2,599 R	-1.0 R	2,603 R	0.1 R
Apr	2,746	3.9	2,638 R	1.5 R	2,608 R	0.2 R
May	1,836	1.5	2,621 R	-0.6 R	2,615 R	0.3 R
Jun	1,702	-6.9	2,600 R	-0.8 R	2,625 R	0.4 R
Jul	2,082	-4.0	2,575 R	-1.0 R	2,636 R	0.4 R
Aug	2,002	3.1	2,653 R	3.0 R	2,650 R	0.5 R
Sep	2,197	3.2	2,658 R	0.2 R	2,664 R	0.6 R
Oct	2,474	4.7	2,744 R	3.3 R	2,680 R	0.6 R
Nov	2,740	4.6	2,706 R	-1.4 R	2,696 R	0.6 R
Dec	3,210	4.6	2,695 R	-0.4 R	2,711 R	0.6 R
2007 Jan	4,364	2.4	2,669 R	-1.0 R	2,726 R	0.5 R
Feb	3,493	6.1	2,782 R	4.2 R	2,737 R	0.4 R
Mar	3,399	7.5	2,787 R	0.2 R	2,746 R	0.3 R
Apr	2,814	2.5	2,705 R	-2.9 R	2,752 R	0.2 R
May	1,942	5.8	2,773 R	2.5 R	2,755 R	0.1 R
Jun	1,809	6.3	2,762 R	-0.4 R	2,757 R	0.1 R
Jul	2,205	5.9	2,729 R	-1.2 R	2,758 R	0 R
Aug	2,131	6.4	2,820 R	3.3 R	2,757 R	0 R
Sep	2,286	4.1	2,767 R	-1.9 R	2,756 R	0 R
Oct	2,439	-1.4	2,702 R	-2.4 R	2,755 R	0 R
Nov	2,795	2.0	2,758 R	2.1 R	2,754 R	-0.1 R
Dec	3,239	0.9	2,731	-1.0	2,751	-0.1

(1) All figures are subject to revision when the seasonal adjustment program is run each period.

(2) The seasonally adjusted series differs from the actual series in that the seasonal changes have been removed.

(3) The trend series differs from the actual series in that both the seasonal and irregular components have been removed.

**Symbol:**

R revised

Table 4

**Seasonally Adjusted and Trend Guest Nights<sup>(1)</sup>**  
By accommodation type

Accommodation type	Series ref: ACSM	Month												
		2006	2007											
		Dec	Jan	Feb	Mar	Apr	May	Jun	Jul	Aug	Sep	Oct	Nov	Dec
<b>Seasonally adjusted guest nights (000)<sup>(2)</sup></b>														
Hotels/resorts	S4SAZ03	864 R	861 R	861 R	871 R	848 R	849 R	858 R	852 R	874 R	860 R	853 R	872 R	855
Motels/motor inns/apartments	S4SBZ03	908 R	901 R	930 R	926 R	899 R	944 R	919 R	903 R	954 R	920 R	904 R	926 R	909
Hosted accommodation <sup>(3)</sup>	S4SCZ03	48 R	49 R	51 R	50 R	46 R	46 R	47 R	44 R	47 R	46 R	46 R	49 R	49
Backpackers/hostels	S4SDZ03	365 R	370 R	376 R	378 R	379 R	376 R	386 R	386 R	390 R	391 R	371 R	373 R	373
Caravan parks/camping grounds	S4SEZ03	518 R	512 R	564 R	552 R	538 R	571 R	541 R	540 R	560 R	554 R	530 R	539 R	541
<b>Percentage change from previous month</b>														
Hotels/resorts	S4SAZ03	1.0 R	-0.4 R	0.1 R	1.1 R	-2.6 R	0.2 R	1.0 R	-0.7 R	2.5 R	-1.5 R	-0.8 R	2.2 R	-1.9
Motels/motor inns/apartments	S4SBZ03	0.2 R	-0.8 R	3.3 R	-0.5 R	-2.9 R	5.0 R	-2.7 R	-1.7 R	5.6 R	-3.5 R	-1.8 R	2.5 R	-1.8
Hosted accommodation <sup>(3)</sup>	S4SCZ03	-2.0 R	2.0 R	4.6 R	-2.7 R	-7.5 R	-0.4 R	1.9 R	-6.4 R	6.7 R	-0.9 R	0.3 R	5.9 R	0.3
Backpackers/hostels	S4SDZ03	-1.7 R	1.4 R	1.4 R	0.7 R	0.2 R	-0.9 R	2.7 R	0.1 R	1.1 R	0.2 R	-5.1 R	0.5 R	0.1
Caravan parks/camping grounds	S4SEZ03	-0.8 R	-1.1 R	10.2 R	-2.2 R	-2.5 R	6.2 R	-5.3 R	-0.2 R	3.7 R	-1.1 R	-4.3 R	1.6 R	0.5
<b>Guest nights trend (000)<sup>(4)</sup></b>														
Hotels/resorts	S4TAZ03	862 R	863 R	862 R	859 R	857 R	856 R	856 R	858 R	860 R	862 R	862 R	862 R	861
Motels/motor inns/apartments	S4TBZ03	910 R	914 R	917 R	920 R	921 R	922 R	922 R	922 R	922 R	921 R	921 R	920 R	919
Hosted accommodation <sup>(3)</sup>	S4TCZ03	49 R	49 R	48 R	48 R	47 R	47 R	47 R	47 R	47 R	47 R	47 R	47 R	47
Backpackers/hostels	S4TDZ03	371 R	373 R	374 R	376 R	379 R	382 R	385 R	386 R	385 R	383 R	380 R	376 R	373
Caravan parks/camping grounds	S4TEZ03	532 R	537 R	541 R	544 R	547 R	548 R	549 R	549 R	548 R	547 R	546 R	545 R	543
<b>Percentage change from previous month</b>														
Hotels/resorts	S4TAZ03	0.5 R	0.2 R	-0.2 R	-0.3 R	-0.3 R	-0.1 R	0 R	0.2 R	0.3 R	0.2 R	0.1 R	0 R	-0.1
Motels/motor inns/apartments	S4TBZ03	0.5 R	0.4 R	0.4 R	0.3 R	0.2 R	0.1 R	0 R	0 R	0 R	-0.1 R	-0.1 R	-0.1 R	-0.1
Hosted accommodation <sup>(3)</sup>	S4TCZ03	-0.1 R	-0.4 R	-0.8 R	-0.9 R	-1.0 R	-0.8 R	-0.6 R	-0.4 R	-0.1 R	0.1 R	0.3 R	0.4 R	0.2
Backpackers/hostels	S4TDZ03	0.7 R	0.4 R	0.4 R	0.5 R	0.7 R	0.9 R	0.7 R	0.3 R	-0.2 R	-0.6 R	-0.8 R	-0.9 R	-0.9
Caravan parks/camping grounds	S4TEZ03	0.9 R	0.9 R	0.8 R	0.6 R	0.4 R	0.2 R	0.1 R	0 R	-0.1 R	-0.2 R	-0.1 R	-0.2 R	-0.4

(1) All figures are subject to revision when the seasonal adjustment program is run each period.

(2) The seasonally adjusted series differs from the actual series in that the seasonal changes have been removed.

(3) Hosted accommodation includes private hotels, guest houses, bed and breakfasts, and farmstays.

(4) The trend series differs from the actual series in that both the seasonal and irregular components have been removed.

**Symbol:**

R revised

Table 5

## North Island Guest Nights

	Actual series		Seasonally adjusted series <sup>(1)(2)</sup>		Trend series <sup>(1)(3)</sup>	
	Guest nights (000)	Change from same month previous year (percent)	Guest nights (000)	Change from previous month (percent)	Guest nights (000)	Change from previous month (percent)
<i>Series ref: ACS</i>	<i>S4A9R03</i>		<i>S4S9R03</i>		<i>S4T9R03</i>	
<b>Month</b>						
2004 Dec	1,807	2.1	1,531 R	1.6 R	1,523 R	0.2 R
2005 Jan	2,508	3.4	1,550 R	1.2 R	1,526 R	0.2 R
Feb	1,749	0.4	1,486 R	-4.1 R	1,528 R	0.1 R
Mar	1,890	10.5	1,603 R	7.8 R	1,529 R	0.1 R
Apr	1,546	0.3	1,508 R	-5.9 R	1,530 R	0 R
May	1,116	0.1	1,504 R	-0.3 R	1,529 R	-0.1 R
Jun	1,126	3.5	1,562 R	3.8 R	1,526 R	-0.2 R
Jul	1,336	3.9	1,600 R	2.5 R	1,522 R	-0.3 R
Aug	1,145	0.4	1,499 R	-6.3 R	1,516 R	-0.3 R
Sep	1,266	-1.2	1,496 R	-0.2 R	1,511 R	-0.4 R
Oct	1,410	1.6	1,519 R	1.6 R	1,506 R	-0.3 R
Nov	1,481	-0.7	1,495 R	-1.6 R	1,502 R	-0.3 R
Dec	1,743	-3.5	1,489 R	-0.4 R	1,498 R	-0.2 R
2006 Jan	2,397	-4.4	1,485 R	-0.3 R	1,497 R	-0.1 R
Feb	1,788	2.2	1,516 R	2.0 R	1,498 R	0.1 R
Mar	1,769	-6.4	1,488 R	-1.8 R	1,501 R	0.2 R
Apr	1,555	0.6	1,523 R	2.3 R	1,507 R	0.4 R
May	1,117	0.1	1,510 R	-0.9 R	1,515 R	0.5 R
Jun	1,087	-3.4	1,506 R	-0.3 R	1,525 R	0.6 R
Jul	1,259	-5.7	1,511 R	0.4 R	1,535 R	0.7 R
Aug	1,195	4.4	1,560 R	3.2 R	1,547 R	0.7 R
Sep	1,327	4.8	1,560 R	0 R	1,558 R	0.7 R
Oct	1,489	5.6	1,605 R	2.9 R	1,569 R	0.7 R
Nov	1,571	6.1	1,585 R	-1.2 R	1,578 R	0.6 R
Dec	1,825	4.7	1,568 R	-1.1 R	1,585 R	0.5 R
2007 Jan	2,517	5.0	1,560 R	-0.5 R	1,591 R	0.3 R
Feb	1,920	7.4	1,627 R	4.3 R	1,594 R	0.2 R
Mar	1,931	9.2	1,618 R	-0.6 R	1,596 R	0.1 R
Apr	1,607	3.3	1,578 R	-2.5 R	1,597 R	0 R
May	1,189	6.4	1,610 R	2.0 R	1,597 R	0 R
Jun	1,143	5.1	1,581 R	-1.8 R	1,597 R	0 R
Jul	1,301	3.4	1,564 R	-1.1 R	1,597 R	0 R
Aug	1,244	4.2	1,623 R	3.8 R	1,598 R	0 R
Sep	1,388	4.6	1,630 R	0.4 R	1,598 R	0 R
Oct	1,454	-2.3	1,565 R	-4.0 R	1,598 R	0 R
Nov	1,601	1.9	1,614 R	3.1 R	1,599 R	0 R
Dec	1,839	0.7	1,586	-1.7	1,598	-0.1

(1) All figures are subject to revision when the seasonal adjustment program is run each period.

(2) The seasonally adjusted series differs from the actual series in that the seasonal changes have been removed.

(3) The trend series differs from the actual series in that both the seasonal and irregular components have been removed.

**Symbol:**

R revised

Table 6

## South Island Guest Nights

	Actual series		Seasonally adjusted series <sup>(1)(2)</sup>		Trend series <sup>(1)(3)</sup>	
	Guest nights (000)	Change from same month previous year (percent)	Guest nights (000)	Change from previous month (percent)	Guest nights (000)	Change from previous month (percent)
<i>Series ref: ACS</i>	<i>S4A9S03</i>		<i>S4S9S03</i>		<i>S4T9S03</i>	
<b>Month</b>						
2004 Dec	1,367	0.4	1,097 R	-2.0 R	1,099 R	0 R
2005 Jan	1,830	5.9	1,104 R	0.6 R	1,098 R	-0.1 R
Feb	1,463	2.7	1,083 R	-1.9 R	1,097 R	-0.1 R
Mar	1,499	11.9	1,182 R	9.1 R	1,095 R	-0.2 R
Apr	1,097	-4.6	1,025 R	-13.3 R	1,093 R	-0.2 R
May	692	-0.2	1,076 R	5.0 R	1,091 R	-0.2 R
Jun	703	13.4	1,251 R	16.2 R	1,090 R	-0.1 R
Jul	834	1.0	1,090 R	-12.8 R	1,090 R	-0.1 R
Aug	797	0.3	1,082 R	-0.8 R	1,090 R	0 R
Sep	863	-4.8	1,086 R	0.4 R	1,092 R	0.1 R
Oct	952	2.8	1,100 R	1.3 R	1,094 R	0.2 R
Nov	1,138	-2.0	1,093 R	-0.7 R	1,096 R	0.2 R
Dec	1,327	-2.9	1,073 R	-1.8 R	1,098 R	0.2 R
2006 Jan	1,866	2.0	1,125 R	4.8 R	1,099 R	0.1 R
Feb	1,504	2.8	1,108 R	-1.5 R	1,100 R	0.1 R
Mar	1,393	-7.1	1,096 R	-1.1 R	1,100 R	0 R
Apr	1,190	8.5	1,114 R	1.6 R	1,100 R	0 R
May	718	3.8	1,115 R	0.1 R	1,100 R	0 R
Jun	615	-12.5	1,088 R	-2.5 R	1,101 R	0 R
Jul	823	-1.3	1,078 R	-0.9 R	1,102 R	0.1 R
Aug	807	1.3	1,094 R	1.4 R	1,104 R	0.2 R
Sep	870	0.8	1,098 R	0.4 R	1,108 R	0.3 R
Oct	985	3.4	1,140 R	3.7 R	1,112 R	0.4 R
Nov	1,168	2.7	1,122 R	-1.5 R	1,118 R	0.6 R
Dec	1,385	4.4	1,128 R	0.5 R	1,126 R	0.7 R
2007 Jan	1,846	-1.1	1,110 R	-1.5 R	1,134 R	0.7 R
Feb	1,573	4.6	1,157 R	4.2 R	1,143 R	0.7 R
Mar	1,467	5.3	1,154 R	-0.3 R	1,150 R	0.6 R
Apr	1,207	1.4	1,128 R	-2.2 R	1,155 R	0.5 R
May	753	4.8	1,166 R	3.4 R	1,159 R	0.3 R
Jun	666	8.4	1,174 R	0.7 R	1,161 R	0.2 R
Jul	904	9.8	1,186 R	1.0 R	1,162 R	0.1 R
Aug	886	9.8	1,199 R	1.1 R	1,162 R	0 R
Sep	898	3.2	1,137 R	-5.2 R	1,161 R	-0.1 R
Oct	985	0	1,139 R	0.1 R	1,160 R	-0.1 R
Nov	1,194	2.1	1,146 R	0.6 R	1,158 R	-0.2 R
Dec	1,400	1.1	1,145	-0.1	1,156	-0.2

(1) All figures are subject to revision when the seasonal adjustment program is run each period.

(2) The seasonally adjusted series differs from the actual series in that the seasonal changes have been removed.

(3) The trend series differs from the actual series in that both the seasonal and irregular components have been removed.

**Symbol:**

R revised

Table 7

## Regional Guest Nights

Region	Series ref: ACSM	Month												
		2006	2007											
		Dec	Jan	Feb	Mar	Apr	May	Jun	Jul	Aug	Sep	Oct	Nov	Dec
<b>Guest Nights (000)</b>														
Northland	S6RA03	210	364	205	184	144	90	76	79	76	93	116	129	215
Auckland	S6RB03	481	562	521	570	461	379	375	415	417	429	455	542	485
Waikato	S6RC03	287	408	302	299	249	164	163	186	172	196	200	214	267
Bay of Plenty	S6RD03	342	510	318	307	284	195	179	211	176	227	242	254	353
Hawke's Bay/Gisborne	S6RE03	155	234	136	140	119	76	72	77	74	82	104	97	153
Taranaki/Manawatu-Wanganui	S6RF03	140	191	174	165	134	103	105	146	151	156	132	134	145
Wellington	S6RG03	211	249	264	267	217	182	173	186	178	204	206	231	222
Nelson/Marlborough/Tasman	S6RH03	233	372	255	220	170	100	85	87	90	95	119	156	237
Canterbury	S6RI03	506	617	558	528	455	296	275	339	325	357	412	481	520
West Coast	S6RJ03	135	178	174	151	117	68	56	64	59	75	93	118	136
Otago	S6RK03	418	562	463	450	382	240	215	377	375	325	300	351	413
Southland	S6RL03	94	118	122	119	83	48	35	37	37	45	60	87	94
<b>New Zealand</b>	<b>S6RZ03</b>	<b>3,210</b>	<b>4,364</b>	<b>3,493</b>	<b>3,399</b>	<b>2,814</b>	<b>1,942</b>	<b>1,809</b>	<b>2,205</b>	<b>2,131</b>	<b>2,286</b>	<b>2,439</b>	<b>2,795</b>	<b>3,239</b>
<b>Percentage change from the same month of the previous year<sup>(1)</sup></b>														
Northland		5.3	14.2	8.5	5.6	-5.5	8.6	3.8	-7.2	2.3	0.3	-10.0	-6.5	2.5
Auckland		4.5	6.0	6.9	13.4	6.1	3.4	7.8	15.8	10.7	8.6	-0.8	9.9	0.9
Waikato		1.0	1.9	8.1	6.4	1.1	9.3	-0.4	-2.4	8.2	3.4	-2.8	-11.9	-6.9
Bay of Plenty		8.6	3.8	4.7	11.4	6.5	9.9	4.2	2.2	-7.8	8.7	-0.2	4.4	3.1
Hawke's Bay/Gisborne		7.8	2.0	-2.6	2.9	2.8	15.3	6.1	5.7	-0.7	4.5	-0.1	-2.5	-1.5
Taranaki/Manawatu-Wanganui		-2.2	-2.7	14.7	7.0	4.4	-0.1	1.4	-5.6	0.8	-7.9	-6.5	8.3	3.7
Wellington		6.7	7.8	11.3	8.7	2.4	6.1	8.4	-2.0	5.4	6.4	-1.2	0.1	4.9
Nelson/Marlborough/Tasman		4.4	-3.4	2.2	4.7	6.0	14.6	12.7	6.3	13.2	1.9	-3.4	-0.7	2.1
Canterbury		5.6	-1.9	3.9	1.8	1.2	1.6	8.9	9.5	14.5	3.1	2.5	6.0	2.8
West Coast		5.1	3.2	11.0	3.1	-1.4	7.2	8.9	9.7	9.0	8.3	-5.2	-2.2	0.3
Otago		2.8	0.8	4.9	9.7	1.3	4.0	5.5	11.9	6.2	2.6	0.6	0.8	-1.1
Southland		3.6	-4.0	3.0	10.0	-2.3	7.0	11.4	1.9	1.7	3.2	-4.4	-1.2	0
<b>New Zealand</b>		<b>4.6</b>	<b>2.4</b>	<b>6.1</b>	<b>7.5</b>	<b>2.5</b>	<b>5.8</b>	<b>6.3</b>	<b>5.9</b>	<b>6.4</b>	<b>4.1</b>	<b>-1.4</b>	<b>2.0</b>	<b>0.9</b>

(1) Percentage changes are calculated on unrounded figures.