



# Hot Off The Press

LATEST STATISTICS FROM STATISTICS NEW ZEALAND



**Embargoed until 10:45am – 12 April 2007**

## Accommodation Survey

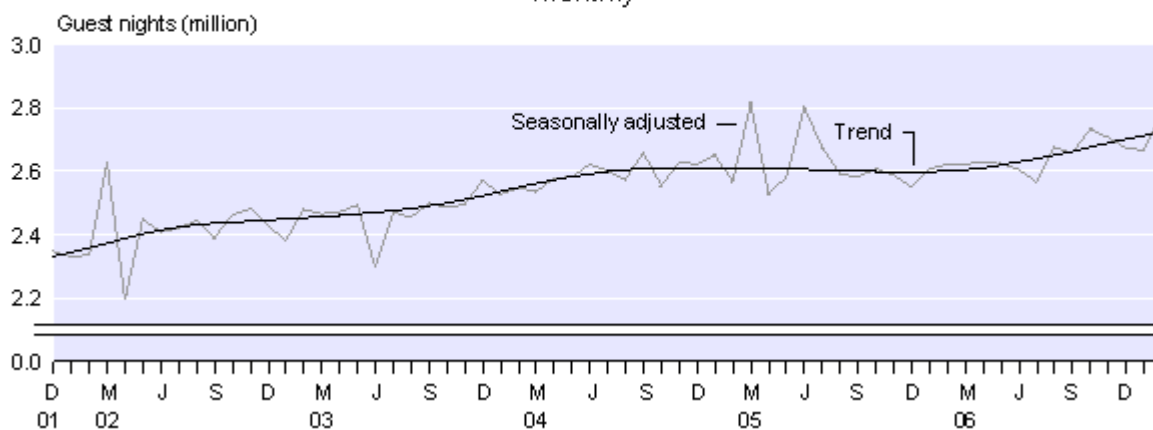
### February 2007

#### Highlights

In February 2007:

- Total guest nights were 6 percent higher than in February 2006.
- The trend in total guest nights has been increasing since January 2006.
- Guest nights were up 7 percent in the North Island and up 5 percent in the South Island compared with February 2006.
- Eleven of the 12 regions recorded more guest nights than in February 2006.
- All five accommodation types recorded more guest nights than in February 2006.
- The occupancy rate, excluding caravan parks/camping grounds, was 68 percent.

**Total Guest Nights**  
*Monthly*



Dallas Welch  
Acting Government Statistician

12 April 2007  
Cat 70.905 Set 06/07 – 152

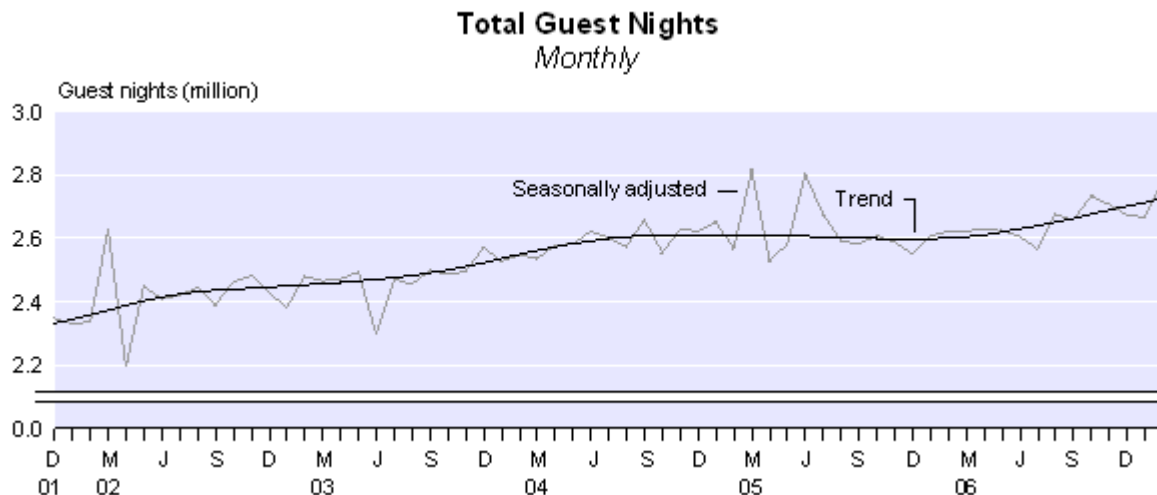
There is a companion Media Release published – [Accommodation Survey: February 2007](#).

## Commentary

### Total guest nights

Total guest nights in short-term commercial accommodation were 3.5 million in February 2007, up 6 percent compared with February 2006 and 9 percent compared with February 2005.

The trend in total guest nights has been increasing since January 2006 after a flat period that began in November 2004. In February 2007, the trend level was 5 percent higher than in February 2006, and 4 percent higher than in February 2005.



### Comparison with short-term overseas visitor arrival statistics

The Hot Off The Press release *External Migration: February 2007* shows that short-term overseas visitor arrivals in New Zealand for February 2007 were up 15,100 (6 percent) on February 2006. This follows a decrease of 3,800 (2 percent) in January 2007 compared with January 2006.

Similarly, the number of stay days for all visitor arrivals in February 2007 was up 2 percent on February 2006. This follows a decrease of less than one percent in January 2007 compared with January 2006.

For visitors arriving in February 2007, the average length of stay was 22 days, compared with 23 days in February 2006. In January 2007, the average length of stay was 23 days, the same as in January 2006.

New Zealand resident short-term departures for February were up 5,200 (6 percent) on February 2006. This follows an increase of 1,400 (1 percent) in January 2007 compared with January 2006.

## Guest nights by island

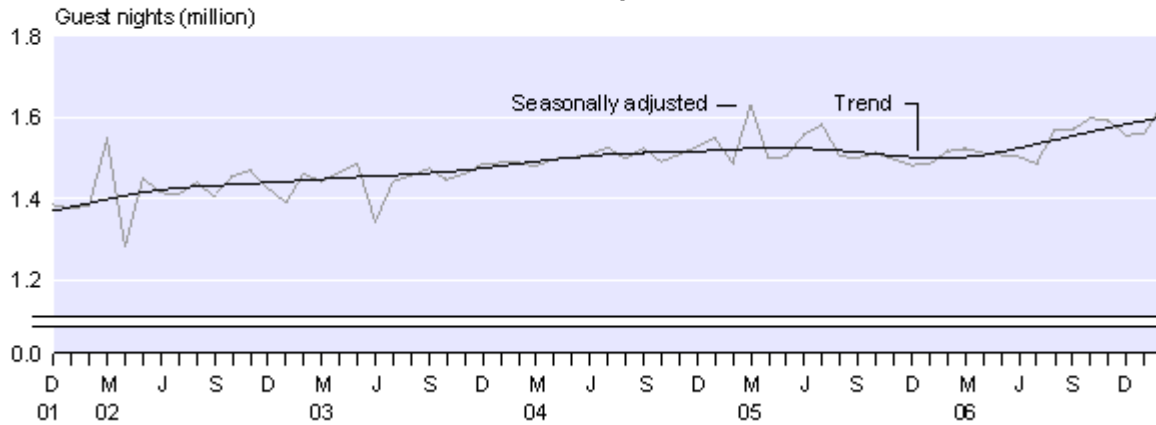
Guest nights in the North Island were 1.9 million in February 2007, a 7 percent increase compared with February 2006. Guest nights in the South Island were 1.6 million, a 5 percent increase compared with February 2006.

The trend in North Island guest nights has been increasing since February 2006, after a period of decreases that began in June 2005. In February 2007, the trend level was 7 percent higher than in February 2006 and 5 percent higher than in February 2005.

The trend in South Island guest nights has been increasing since August 2005, after a period of flatness. Since the turning point in August 2005 the trend level has increased by 4 percent. In February 2007, the trend level was 3 percent higher than both February 2006 and 2005.

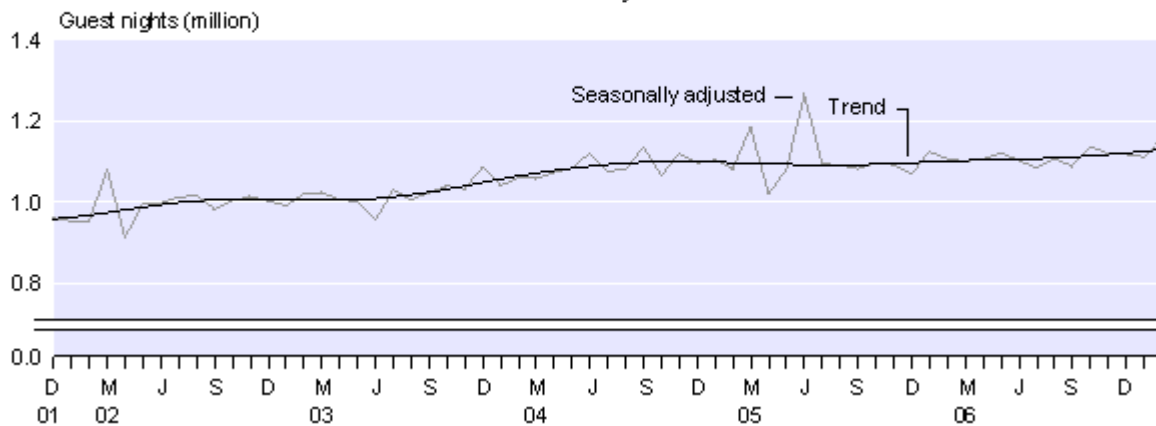
### North Island Guest Nights

*Monthly*



### South Island Guest Nights

*Monthly*



## Guest nights by region

Eleven of the 12 regions recorded more guest nights in February 2007 than in February 2006. Auckland (up 34,000 or 7 percent) had the largest absolute increase in guest nights, followed by Wellington (up 27,000 or 11 percent) and Waikato (up 23,000 or 8 percent).

The Hawke's Bay/Gisborne region (down 4,000 or 3 percent) was the only region to record fewer guest nights when comparing the two February months.

The Wellington region recorded its highest monthly guest night total since the survey began in July 1996.

## Guest nights by accommodation type

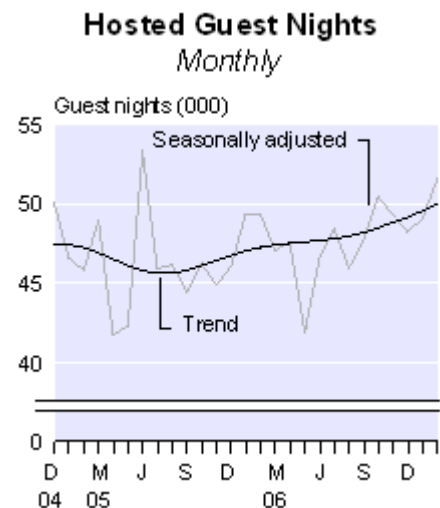
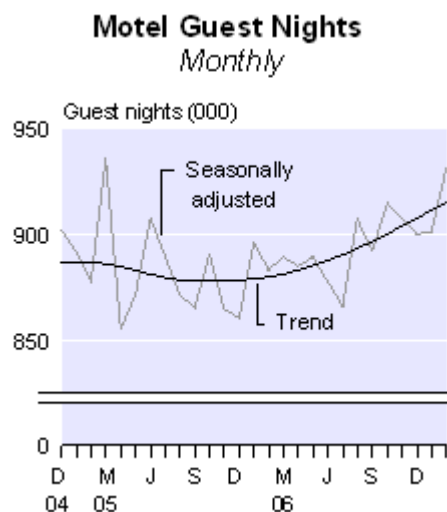
All five accommodation types recorded more guest nights in February 2007 than in February 2006. Caravan parks/camping grounds (up 79,000 or 12 percent) had the largest absolute increase, followed by motels (up 58,000 or 5 percent) and hotels (up 34,000 or 3 percent).

In February 2007, hotels and hosted accommodation recorded their highest monthly guest night totals since the survey began.

Motels (32 percent) had the largest share of total guest nights in February 2007, followed by hotels (30 percent) and caravan parks/camping grounds (22 percent).

The trend in motel guest nights has been increasing since October 2005, following a period of decreases that began in February 2005. Since the turning point in October 2005, the trend level has increased 4 percent.

The trend in guest nights for hosted accommodation has been increasing since July 2005, after a period of decreases that began in January 2005. Since the turning point in July 2005, the trend level has increased 10 percent.



## Occupancy rate

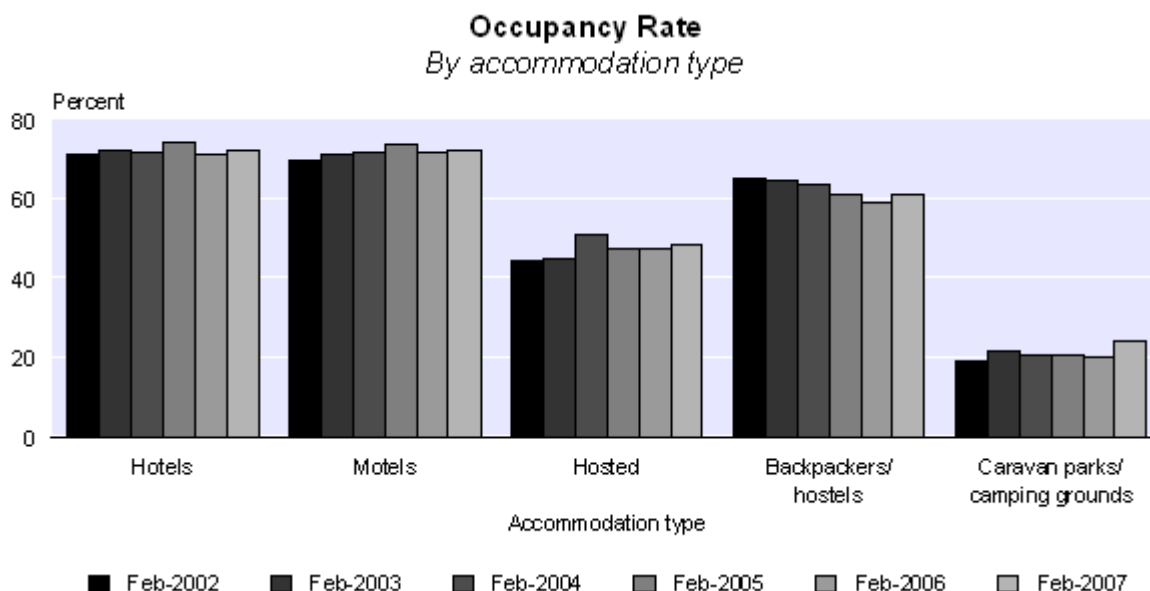
The February 2007 occupancy rate, excluding caravan parks/camping grounds, was 68 percent compared with 67 percent in February 2006.

Accommodation capacity, excluding caravan parks/camping grounds, was 2 percent above the February 2006 level.

Hotels and motels (both at 72 percent) recorded the highest occupancy rate of all the accommodation types in February 2007, followed by backpackers (61 percent) and hosted accommodation (48 percent).

Excluding caravan parks/camping grounds, Wellington (75 percent) had the highest occupancy rate in February 2007, followed by Otago (74 percent) and Nelson/Marlborough/Tasman (72 percent).

The Northland and Taranaki/Manawatu-Wanganui regions recorded their highest monthly occupancy rates since the survey began.



## Non-response imputation

When respondents do not answer questions in the Accommodation Survey, Statistics New Zealand estimates the missing information based on data from similar establishments in the same and/or similar areas. For more information, please refer to the Technical notes of this release or contact Statistics NZ.

## Response rates by accommodation type for February 2007

Accommodation type	Percentage of establishments responding to questions on guest nights, guest arrivals and stay unit nights	Percentage of the guest night estimate from establishments that responded to the question on guest nights
Hotels	83 percent	93 percent
Motels	78 percent	81 percent
Hosted	82 percent	85 percent
Backpackers/hostels	83 percent	87 percent
Caravan parks / camping grounds	85 percent	91 percent
<b>Total New Zealand</b>	81 percent	88 percent

### Survey sponsorship

The Accommodation Survey is a monthly survey undertaken by Statistics NZ and sponsored by the Ministry of Tourism.

For technical information contact:  
Tehseen Islam or Karen Brohm  
Christchurch 03 964 8700  
**Email:** [info@stats.govt.nz](mailto:info@stats.govt.nz)

# Technical notes

## Population

The target population for this survey is all 'geographic units' (called 'establishments' in this publication) that are classified as short-term (less than one month) commercial accommodation providers operating in New Zealand. In terms of the Australian and New Zealand Standard Industrial Classification (ANZSIC), the target population is taken from class 5710 (accommodation), and the part of class 5720 (pubs, taverns and bars) that also provides accommodation.

The survey frame is all short-term commercial accommodation-providing geographic units belonging to an economically significant 'enterprise'. Economic significance is generally determined as being GST registered and having a turnover of at least \$30,000 per annum.

## Survey errors

This survey aims for 100 percent coverage of the population (ie a full census). In practice, however, an overall response rate of between 76 and 80 percent is usually achieved. The remaining units are given imputed values based upon the characteristics of similar establishments in the same or similar regions. Imputation introduces unknown errors into the estimates, and this should be borne in mind by users of the data. The size of these unknown errors is difficult to quantify.

Other errors occur for reasons such as respondent error, frame quality and errors in processing. While every effort is made to minimise these errors, they will still occur. It is not possible to quantify their effect.

## Trend estimates

For any series, the survey estimates can be broken down into three components: trend, seasonal and irregular. While seasonally adjusted series have had the seasonal component removed, the trend series have had both the seasonal and the irregular components removed. Trend estimates reveal the underlying direction of movement in a series, and are likely to indicate turning points more accurately than seasonally adjusted estimates.

The accommodation trend series are calculated using the X-12-ARIMA seasonal adjustment package. They are based on optimal moving averages of the seasonally adjusted series, with an adjustment for outlying values. The X-12-ARIMA package is an updated version of X-11-ARIMA, developed by the US Bureau of the Census.

The trend estimates towards the end of the series incorporate new data as it becomes available, and can therefore change as more observations are added to the series. Revisions can be particularly large if an observation is treated as an outlier in one month, but is found to be part of the underlying trend as further observations are added to the series. All trend estimates are subject to revisions each month, but normally only the last two or three estimates are likely to be substantially altered.

## Trend estimates versus month-on-month comparisons

Trend estimates reveal the underlying direction of the movement in a series. In contrast, comparisons between one month and the same month in the previous year(s) do not take account of data recorded in between these periods, and are subject to one-off fluctuations. Reasons for fluctuations include changes in the timing of holidays, international crises, and large sporting and cultural events.

## Seasonally adjusted estimates

The X-12-ARIMA package has been used to produce the seasonally adjusted estimates referred to in the Commentary text. Seasonal adjustment aims to eliminate the impact of regular seasonal events. These may be due to climatic effects (such as more guests staying in camping grounds during the summer) or calendar effects (such as holidays). This makes the data for adjacent months more comparable. All seasonally adjusted figures are subject to revision each month.

Further information about [seasonal adjustment](#) is available on the Statistics New Zealand website.

## Classification of accommodation type

The predominant capacity provided determines the accommodation type. For instance, if a business provides both motel and camping ground accommodation, but the majority of its stay units are motel rooms, then it would be classified as a motel. The classification system used is the New Zealand Accommodation Classification, broadly defined below:

- Hotels: includes both hotels and resorts
- Motels: includes motor inns, apartments and motels
- Hosted: includes private hotels, guest houses, bed and breakfasts, and holiday farm (farmstay) accommodation
- Backpackers/hostels
- Caravan parks/camping grounds.

Further information on the classification system is available on request.

## Classification of residence of guest

Every third month (January, April, July and October), the survey asks all respondents to classify their guests as coming from the following regions:

### Domestic

Auckland  
Wellington  
Rest of North Island  
Canterbury  
Otago  
Rest of South Island  
Don't know

### International

Australia  
Japan  
Korea  
Other Asia  
UK and Ireland  
Germany  
Other Europe  
North America  
Other  
Don't know

## Other definitions

### **Business frame**

A register (maintained by Statistics NZ) of all economically significant businesses operating in New Zealand from which the survey population is drawn.

### **Establishment**

The smallest statistical unit operating within a single physical location and owned by a single enterprise. The term is used to represent what is usually called the 'geographic unit' in other Statistics NZ publications.

### **Guest night**

A guest night is equivalent to one guest spending one night at an establishment. For example, a motel with 15 guests spending two nights would report provision of 30 guest nights of accommodation.

### **Stay unit**

The term used to describe the unit of accommodation that is available to be charged out to guests (eg a powered site in a caravan park, a bed in a backpackers, a room in a hotel or motel).

### **Capacity (stay unit nights available)**

This is the basic measure of an establishment's accommodation capacity. It is defined as one stay unit multiplied by one night. For example, 10 units in a motel available for guest use (whether occupied or not) for the full 31 days in July would have an accommodation capacity of 310 stay unit nights.

### **Occupancy rate**

This derived variable is calculated by dividing stay unit nights occupied by stay unit nights available. In the case of the motel above, if six of its 10 units were occupied every night in July, it would have  $6 \times 31 = 186$  stay unit nights occupied, and its occupancy rate would be 60 percent.

### **Average length of stay**

This derived variable is calculated by dividing total guest nights by total guest first nights.

## More information

For more information, follow the [link](#) from the Technical notes of this release on the Statistics NZ website.

## Confidentiality

Data collected and information contained in this publication must conform to the provisions of the Statistics Act 1975. This requires that published information maintains the confidentiality of individual respondents.

## **Copyright**

Information obtained from Statistics NZ may be freely used, reproduced, or quoted unless otherwise specified. In all cases Statistics NZ must be acknowledged as the source.

## **Liability**

While care has been used in processing, analysing and extracting information, Statistics NZ gives no warranty that the information supplied is free from error. Statistics NZ shall not be liable for any loss suffered through the use, directly or indirectly, of any information, product or service.

## **Timing**

Timed statistical releases are delivered using postal and electronic services provided by third parties. Delivery of these releases may be delayed by circumstances outside the control of Statistics NZ. Statistics NZ accepts no responsibility for any such delays.

### **Next release ...**

*Accommodation Survey: March 2007* will be released on 11 May 2007.

Statistics New Zealand: The first source of independent information for your key decisions.

## Tables

The following tables can be downloaded from the Statistics New Zealand website in Excel 97 format. If you do not have access to Excel 97 or higher, you may use the [Excel file viewer](#) to view, print and export the contents of the file.

### List of tables

1. Establishments, capacity, guest nights, occupancy rate and average stay, by accommodation type
2. Occupancy rate excluding caravan parks/camping grounds, by region
3. Total guest nights
4. Seasonally adjusted and trend guest nights, by accommodation type
5. North Island guest nights
6. South Island guest nights

### Accommodation pivot tables

The Accommodation Pivot Tables provide more detailed information, breaking the survey variables down by regional tourism organisation areas and territorial authority areas.

- **Regional Tourism Organisation (RTO) Area by Accommodation Type (Type)**  
Contains number of establishments, capacity, occupancy rates, guest nights, guest arrivals, length of stay and some ratios of these variables.

The graph on the first worksheet will change to display the RTO and Type you select on the second worksheet. When printing the graph, select a cell rather than the graph so the heading will print.

- **Total Accommodation by Territorial Authority (TA)**  
Contains number of establishments, capacity, occupancy rates, guest nights, guest arrivals, length of stay and some ratios of these variables.
- **Origin of Guests and Employment Information by Regional Tourism Organisation (RTO)**  
Contains domestic and international guest night variables and employees.

### Printing a selection of data in a spreadsheet

If you only want to print out some of the information in a spreadsheet, either select the pages you want in the print box, or hide the data you don't want to print by highlighting the columns or rows of data you don't want, then right click the mouse and select 'Hide'.

**Accommodation Survey: February 2007**

Table 1

**Establishments, Capacity, Guest Nights, Occupancy Rate and Average Stay<sup>(1)(2)(3)</sup>**  
*By accommodation type*

Accommodation type	Series ref: ACSM	Month													
		2006												2007	
		Feb	Mar	Apr	May	Jun	Jul	Aug	Sep	Oct	Nov	Dec	Jan	Feb	
<b>Hotels/resorts</b>															
Number of establishments	S1AA	577	574	573	573	569	566	566	566	568	569	570	569	566	
Capacity (000)	S1AB	862	955	927	955	908	939	939	922	964	936	967	972	875	
Guest nights (000)	S1AC	1,006	989	831	667	603	727	733	766	852	977	886	1,002	1,041	
Occupancy rate (percent)	S1AD	71.3	64.9	53.6	47.2	44.6	47.9	50.3	52.5	55.7	65.8	52.9	58.8	72.3	
Average stay (nights)	S1AE	1.7	1.7	1.7	1.8	1.8	2.0	1.9	1.9	1.8	1.7	1.8	1.9	1.8	
<b>Motels/motor inns/apartments</b>															
Number of establishments	S1BA	1,714	1,717	1,715	1,706	1,703	1,703	1,716	1,732	1,745	1,748	1,757	1,760	1,769	
Capacity (000)	S1BB	735	815	789	814	786	814	821	800	834	809	839	840	766	
Guest nights (000)	S1BC	1,067	1,079	956	637	638	797	742	814	875	902	972	1,242	1,126	
Occupancy rate (percent)	S1BD	71.4	67.1	57.0	43.7	42.9	47.8	46.8	50.5	52.8	58.9	53.3	65.0	72.2	
Average stay (nights)	S1BE	1.8	1.8	1.8	1.8	1.8	1.9	2.0	1.8	1.8	1.8	1.8	1.9	1.8	
<b>Hosted accommodation<sup>(4)</sup></b>															
Number of establishments	S1CA	661	659	653	598	575	552	566	594	628	658	663	674	680	
Capacity (000)	S1CB	95	105	101	97	91	91	94	93	101	100	104	105	95	
Guest nights (000)	S1CC	84	68	48	21	21	32	29	31	42	55	64	82	89	
Occupancy rate (percent)	S1CD	47.1	34.8	25.3	13.0	13.5	17.9	16.7	18.4	22.9	30.5	31.4	39.6	48.5	
Average stay (nights)	S1CE	1.8	1.7	1.8	1.9	2.0	2.3	2.3	2.0	1.8	1.7	1.8	1.8	1.8	
<b>Backpackers/hostels</b>															
Number of establishments	S1DA	440	441	437	429	413	405	408	419	436	438	443	442	443	
Capacity (000)	S1DB	683	762	734	751	716	735	737	721	762	736	760	760	695	
Guest nights (000)	S1DC	458	464	384	276	251	287	276	278	319	390	427	504	483	
Occupancy rate (percent)	S1DD	59.1	54.9	47.8	33.6	32.1	35.9	34.5	34.9	37.5	47.7	49.8	59.0	60.9	
Average stay (nights)	S1DE	1.8	1.9	1.9	2.1	2.0	2.0	2.1	2.0	1.9	1.9	1.8	1.8	1.9	
<b>Total excluding caravan parks/camping grounds</b>															
Number of establishments	S1XA	3,392	3,391	3,378	3,306	3,260	3,226	3,256	3,311	3,377	3,413	3,433	3,445	3,458	
Capacity (000)	S1XB	2,375	2,637	2,551	2,617	2,501	2,581	2,591	2,535	2,661	2,580	2,670	2,677	2,431	
Guest nights (000)	S1XC	2,616	2,601	2,219	1,602	1,514	1,842	1,780	1,890	2,088	2,324	2,348	2,830	2,737	
Occupancy rate (percent)	S1XD	66.8	61.5	51.9	40.9	39.3	43.4	43.5	45.6	48.3	57.1	51.3	60.0	68.1	
Average stay (nights)	S1XE	1.8	1.8	1.8	1.8	1.9	1.9	2.0	1.9	1.8	1.8	1.8	1.9	1.8	
<b>Caravan parks/camping grounds</b>															
Number of establishments	S1EA	421	419	419	404	400	395	394	399	409	411	419	418	418	
Capacity (000)	S1EB	1,522	1,667	1,609	1,521	1,446	1,480	1,480	1,441	1,593	1,540	1,622	1,622	1,456	
Guest nights (000)	S1EC	676	561	527	234	189	240	222	307	386	416	862	1,534	755	
Occupancy rate (percent)	S1ED	20.2	16.0	14.5	8.0	6.6	7.8	7.5	9.7	11.4	13.3	21.8	35.8	23.8	
Average stay (nights)	S1EE	1.9	1.7	1.9	1.8	1.9	1.9	1.9	1.8	1.7	1.7	2.2	2.9	1.9	
<b>Total</b>															
Number of establishments	S19A	3,813	3,810	3,797	3,710	3,660	3,621	3,650	3,710	3,786	3,824	3,852	3,863	3,876	
Capacity (000)	S19B	3,898	4,304	4,160	4,138	3,947	4,061	4,071	3,976	4,255	4,120	4,292	4,299	3,886	
Guest nights (000)	S19C	3,292	3,162	2,746	1,836	1,702	2,082	2,002	2,197	2,474	2,740	3,210	4,364	3,493	
Occupancy rate (percent)	S19D	48.6	43.9	37.4	28.8	27.3	30.4	30.4	32.6	34.5	40.7	40.1	50.9	51.5	
Average stay (nights)	S19E	1.8	1.8	1.8	1.8	1.9	1.9	2.0	1.9	1.8	1.8	1.9	2.1	1.8	

For footnotes, see end of table.

**Accommodation Survey: February 2007**

Table 1  
continued

**Establishments, Capacity, Guest Nights, Occupancy Rate and Average Stay<sup>(1)(2)(3)</sup>**  
*By accommodation type*

Accommodation type	Series ref: ACSM	Month													
		2006												2007	
		Feb	Mar	Apr	May	Jun	Jul	Aug	Sep	Oct	Nov	Dec	Jan	Feb	
<b>Percentage change from the same month of the previous year</b>															
<b>Hotels/resorts</b>															
Number of establishments	S1AA	2.3	1.2	1.8	2.0	1.2	0.2	0.2	-0.5	-0.9	-1.9	-1.0	-1.2	-1.9	
Capacity	S1AB	5.9	4.7	4.8	2.2	-0.2	-0.3	-0.4	0.9	1.4	1.2	1.6	2.0	1.4	
Guest nights	S1AC	2.0	-2.7	-0.7	0.2	-7.4	-6.3	2.5	2.4	6.2	4.2	7.1	6.6	3.4	
Occupancy rate	S1AD	-3.7	-2.9	-6.8	-0.3	-4.5	-4.6	3.7	0.3	3.0	2.5	2.5	6.2	1.4	
Average stay (nights)	S1AE	2.6	-2.0	0.3	-0.2	-0.7	-1.5	0.3	0.4	3.7	1.5	3.4	5.9	2.2	
<b>Motels/motor inns/apartments</b>															
Number of establishments	S1BA	2.0	2.0	1.5	1.1	2.0	1.7	2.6	2.5	3.0	2.9	2.6	2.6	3.2	
Capacity	S1BB	3.2	2.7	2.0	2.3	2.6	2.4	2.8	2.9	3.1	3.3	3.0	1.9	4.2	
Guest nights	S1BC	1.0	-4.8	3.3	1.9	-3.3	-2.7	3.9	3.1	2.6	4.8	4.6	0.7	5.5	
Occupancy rate	S1BD	-2.9	-3.5	-3.0	0.3	-5.8	-4.0	1.3	0.4	-0.3	1.5	1.7	0.6	1.1	
Average stay (nights)	S1BE	-0.3	-0.6	2.6	1.0	1.2	1.3	3.5	-0.5	0.9	2.1	1.6	0.9	1.4	
<b>Hosted accommodation<sup>(4)</sup></b>															
Number of establishments	S1CA	7.5	5.3	8.7	4.0	2.1	4.5	3.1	4.4	2.3	1.7	0.8	1.0	2.9	
Capacity	S1CB	8.8	7.5	9.4	5.4	2.2	5.6	5.0	5.0	4.4	0.9	1.3	-0.1	0.7	
Guest nights	S1CC	9.0	-3.7	13.8	-2.4	-13.7	5.1	-1.1	7.1	9.0	9.8	5.0	-0.3	5.2	
Occupancy rate	S1CD	-0.4	-9.8	0.9	-6.5	-12.5	3.2	-2.5	2.4	7.3	9.3	4.9	0.3	3.0	
Average stay (nights)	S1CE	2.4	0.7	0.7	8.5	6.4	3.6	10.2	-3.1	2.4	0.9	3.5	-1.1	-0.5	
<b>Backpackers/hostels</b>															
Number of establishments	S1DA	8.9	7.6	6.6	7.8	4.0	3.1	2.0	1.2	0.7	0.7	0.2	1.1	0.7	
Capacity	S1DB	7.8	7.4	7.0	7.5	5.9	2.3	1.7	1.0	1.8	1.0	1.1	2.1	1.7	
Guest nights	S1DC	5.3	2.0	4.9	1.8	-7.4	-3.4	4.7	6.7	8.8	7.3	2.8	4.3	5.4	
Occupancy rate	S1DD	-3.5	-3.3	1.8	-5.2	-12.6	-1.9	3.5	5.6	7.2	7.0	0.1	2.7	3.2	
Average stay (nights)	S1DE	2.3	0.1	-1.2	7.4	5.3	-1.6	0.7	0	0.8	-0.3	-1.9	0.1	3.2	
<b>Total excluding caravan parks/camping grounds</b>															
Number of establishments	S1XA	4.0	3.2	3.5	2.6	2.2	2.1	2.2	2.2	1.9	1.5	1.3	1.5	1.9	
Capacity	S1XB	5.7	4.9	4.7	3.8	2.5	1.5	1.4	1.7	2.2	1.8	1.9	1.9	2.3	
Guest nights	S1XC	2.4	-2.8	2.2	1.1	-5.8	-4.1	3.4	3.4	5.1	5.1	5.2	3.4	4.7	
Occupancy rate	S1XD	-3.4	-3.5	-3.4	-1.6	-7.2	-3.8	2.6	1.5	2.8	3.4	1.6	3.1	1.8	
Average stay (nights)	S1XE	1.3	-1.0	1.1	1.6	1.1	-0.2	1.8	-0.1	2.1	1.5	1.7	2.4	2.0	
<b>Caravan parks/camping grounds</b>															
Number of establishments	S1EA	2.7	1.9	4.2	2.5	2.0	3.1	3.7	2.0	1.2	0.5	0.2	-0.5	-0.7	
Capacity	S1EB	1.4	1.2	2.0	-0.1	-1.0	-0.4	0.3	-0.8	-2.0	-2.9	-3.2	-3.6	-4.4	
Guest nights	S1EC	2.9	-21.3	11.5	4.6	-14.9	-3.2	0.8	1.9	2.9	2.1	2.8	0.6	11.7	
Occupancy rate	S1ED	-0.6	-18.1	9.2	8.6	-10.2	-0.8	5.9	5.2	7.6	5.7	9.6	7.2	17.4	
Average stay (nights)	S1EE	0.1	-8.9	2.7	-0.4	-0.1	0.4	-1.8	-2.0	-1.6	-1.3	0.8	-0.8	1.7	
<b>Total</b>															
Number of establishments	S19A	3.8	3.1	3.6	2.6	2.1	2.2	2.4	2.1	1.8	1.4	1.2	1.3	1.7	
Capacity	S19B	4.0	3.5	3.6	2.3	1.2	0.8	1.0	0.8	0.6	0	-0.1	-0.2	-0.3	
Guest nights	S19C	2.5	-6.7	3.9	1.5	-6.9	-4.0	3.1	3.2	4.7	4.6	4.6	2.4	6.1	
Occupancy rate	S19D	-2.0	-5.1	-1.1	0.4	-6.6	-3.1	3.2	2.5	4.5	4.9	4.2	4.9	5.8	
Average stay (nights)	S19E	1.1	-2.6	1.4	1.3	1.0	-0.1	1.4	-0.4	1.5	1.0	1.4	1.3	2.0	

- (1) Establishments that are temporarily closed for more than 14 days during a month are excluded from the results.  
(2) Establishments primarily offering accommodation for periods of one month or more are excluded from the survey.  
(3) Monthly capacity shows the number of stay units available and is affected by the number of days in a month.  
(4) Hosted accommodation includes private hotels, guest houses, bed and breakfasts, and farmstays.

Table 2

**Occupancy Rate Excluding Caravan Parks/Camping Grounds<sup>(1)</sup>**  
By region

Region	Series ref: ACSM	Month													
		2006												2007	
		Feb	Mar	Apr	May	Jun	Jul	Aug	Sep	Oct	Nov	Dec	Jan	Feb	
<b>Occupancy rate (percent)</b>															
Northland	S2RAB	63.2	55.0	47.3	33.1	29.0	31.1	29.2	34.0	43.0	49.6	47.3	63.0	64.8	
Auckland	S2RBB	69.8	67.4	55.7	50.5	50.2	48.6	53.0	54.9	58.8	67.2	56.5	62.1	71.2	
Waikato	S2RCB	56.3	55.7	46.4	34.0	36.6	37.3	34.5	38.6	40.2	50.5	46.6	56.4	58.0	
Bay of Plenty	S2RDB	68.6	61.3	55.5	44.3	43.6	45.6	45.0	48.2	54.4	60.0	55.7	63.6	66.3	
Hawke's Bay/Gisborne	S2REB	63.9	62.7	49.4	37.2	37.9	36.5	38.5	40.9	47.2	51.1	49.5	64.0	64.6	
Taranaki/Manawatu-Wanganui	S2RFB	46.4	46.2	39.1	35.0	33.9	44.9	43.2	47.9	40.2	40.5	34.6	42.4	51.7	
Wellington	S2RGB	70.4	67.8	58.6	52.3	50.8	56.3	51.3	56.5	58.7	65.6	52.6	57.8	74.8	
Nelson/Marlborough/Tasman	S2RHB	70.6	61.1	48.4	32.3	31.0	32.1	31.2	32.7	38.0	51.6	53.9	67.3	72.4	
Canterbury	S2RIB	68.9	62.2	52.2	39.1	35.6	40.8	38.5	44.0	48.3	58.7	51.7	58.6	69.9	
West Coast	S2RJB	64.9	56.6	44.5	28.1	23.3	25.9	24.7	28.7	36.9	49.5	45.9	58.6	67.1	
Otago	S2RKB	75.8	65.1	58.3	42.3	40.1	54.5	59.6	50.3	45.9	58.6	55.7	65.7	73.9	
Southland	S2RLB	68.8	58.0	45.4	30.8	24.7	25.7	27.2	29.5	37.9	50.3	46.4	56.4	68.6	
<b>New Zealand</b>	<b>S2RZB</b>	<b>66.8</b>	<b>61.5</b>	<b>51.9</b>	<b>40.9</b>	<b>39.3</b>	<b>43.4</b>	<b>43.5</b>	<b>45.6</b>	<b>48.3</b>	<b>57.1</b>	<b>51.3</b>	<b>60.0</b>	<b>68.1</b>	
<b>Percentage change from the same month of the previous year</b>															
Northland	S2RAB	2.7	-2.7	8.3	-1.1	3.7	3.2	-0.5	2.5	14.0	4.8	-1.2	2.3	2.4	
Auckland	S2RBB	-7.8	-4.4	-10.3	-3.2	-2.9	-12.3	4.8	1.8	5.2	3.7	1.3	7.7	2.0	
Waikato	S2RCB	-1.2	1.3	-3.3	-3.1	-4.4	-4.9	0.9	0.1	-2.2	7.3	5.6	6.1	3.1	
Bay of Plenty	S2RDB	0.7	-1.8	-0.4	-3.1	-7.9	-6.3	9.2	7.8	3.8	1.6	2.2	1.7	-3.4	
Hawke's Bay/Gisborne	S2REB	-0.2	2.3	-3.8	-3.6	-0.5	-4.8	4.5	-0.5	1.8	8.9	5.2	8.7	1.1	
Taranaki/Manawatu-Wanganui	S2RFB	-10.1	-1.9	-3.6	3.8	-9.6	15.1	0.2	7.9	-2.6	-2.9	-3.4	3.6	11.3	
Wellington	S2RGB	-5.7	-5.7	-8.6	-3.1	-6.6	1.1	3.9	1.3	6.0	6.0	4.4	10.2	6.4	
Nelson/Marlborough/Tasman	S2RHB	-1.7	-6.5	-0.5	-6.6	-10.9	-1.3	-4.5	-2.8	-0.9	4.7	6.6	0.3	2.6	
Canterbury	S2RIB	-5.8	-6.2	-6.6	-4.2	-20.2	-3.9	-3.0	1.7	-1.6	2.6	2.1	-1.6	1.5	
West Coast	S2RJB	1.1	-2.7	4.8	-1.0	-11.2	-0.7	-0.4	-0.3	0.8	-0.7	-1.3	-0.2	3.3	
Otago	S2RKB	2.0	-1.0	5.7	5.0	-2.2	-3.7	5.8	-3.1	3.9	3.5	-2.5	0.6	-2.5	
Southland	S2RLB	-8.4	-11.6	-4.4	3.9	-6.3	-2.7	-3.8	-3.2	2.5	-5.1	1.7	-4.7	-0.2	
<b>New Zealand</b>	<b>S2RZB</b>	<b>-3.4</b>	<b>-3.5</b>	<b>-3.4</b>	<b>-1.6</b>	<b>-7.2</b>	<b>-3.8</b>	<b>2.6</b>	<b>1.5</b>	<b>2.8</b>	<b>3.4</b>	<b>1.6</b>	<b>3.1</b>	<b>1.8</b>	

(1) More detailed information is available from regional tourism organisations or Statistics New Zealand.

Table 3

## Total Guest Nights

	Actual series		Seasonally adjusted series <sup>(1)(2)</sup>		Trend series <sup>(1)(3)</sup>		
	Guest nights (000)	Change from same month previous year (percent)	Guest nights (000)	Change from previous month (percent)	Guest nights (000)	Change from previous month (percent)	
<i>Series ref: ACS</i>	<i>S4A9Z03</i>		<i>S4S9Z03</i>		<i>S4T9Z03</i>		
<b>Month</b>							
2004	Feb	3,166	3.1	2,546 R	0.7 R	2,548 R	0.5 R
	Mar	3,050	3.4	2,537 R	-0.4 R	2,561 R	0.5 R
	Apr	2,690	4.1	2,577 R	1.6 R	2,572 R	0.4 R
	May	1,808	3.9	2,582 R	0.2 R	2,583 R	0.4 R
	Jun	1,707	14.7	2,622 R	1.6 R	2,592 R	0.3 R
	Jul	2,111	5.6	2,601 R	-0.8 R	2,599 R	0.3 R
	Aug	1,935	4.4	2,573 R	-1.1 R	2,605 R	0.2 R
	Sep	2,187	6.8	2,658 R	3.3 R	2,609 R	0.1 R
	Oct	2,314	2.7	2,555 R	-3.9 R	2,611 R	0.1 R
	Nov	2,652	5.5	2,627 R	2.8 R	2,612 R	0 R
	Dec	3,174	1.3	2,623 R	-0.2 R	2,612 R	0 R
2005	Jan	4,338	4.4	2,651 R	1.1 R	2,612 R	0 R
	Feb	3,212	1.5	2,568 R	-3.1 R	2,611 R	0 R
	Mar	3,389	11.1	2,813 R	9.5 R	2,611 R	0 R
	Apr	2,643	-1.7	2,528 R	-10.1 R	2,610 R	0 R
	May	1,808	0	2,581 R	2.1 R	2,608 R	-0.1 R
	Jun	1,829	7.1	2,803 R	8.6 R	2,606 R	-0.1 R
	Jul	2,169	2.7	2,675 R	-4.6 R	2,604 R	-0.1 R
	Aug	1,942	0.4	2,592 R	-3.1 R	2,602 R	-0.1 R
	Sep	2,129	-2.7	2,581 R	-0.4 R	2,600 R	-0.1 R
	Oct	2,362	2.1	2,608 R	1.0 R	2,599 R	0 R
	Nov	2,619	-1.3	2,588 R	-0.8 R	2,599 R	0 R
	Dec	3,070	-3.3	2,549 R	-1.5 R	2,598 R	0 R
2006	Jan	4,263	-1.7	2,608 R	2.3 R	2,598 R	0 R
	Feb	3,292	2.5	2,622 R	0.6 R	2,600 R	0.1 R
	Mar	3,162	-6.7	2,622 R	0 R	2,604 R	0.2 R
	Apr	2,746	3.9	2,629 R	0.2 R	2,611 R	0.2 R
	May	1,836	1.5	2,624 R	-0.2 R	2,619 R	0.3 R
	Jun	1,702	-6.9	2,605 R	-0.7 R	2,629 R	0.4 R
	Jul	2,082	-4.0	2,566 R	-1.5 R	2,640 R	0.4 R
	Aug	2,002	3.1	2,676 R	4.3 R	2,651 R	0.4 R
	Sep	2,197	3.2	2,658 R	-0.7 R	2,663 R	0.5 R
	Oct	2,474	4.7	2,733 R	2.8 R	2,676 R	0.5 R
	Nov	2,740	4.6	2,708 R	-0.9 R	2,689 R	0.5 R
	Dec	3,210	4.6	2,672 R	-1.3 R	2,701 R	0.5 R
2007	Jan	4,364	2.4	2,667 R	-0.2 R	2,713 R	0.5 R
	Feb	3,493	6.1	2,780	4.3	2,726	0.5

(1) All figures are subject to revision when the seasonal adjustment program is run each period.

(2) The seasonally adjusted series differs from the actual series in that the seasonal changes have been removed.

(3) The trend series differs from the actual series in that both the seasonal and irregular components have been removed.

**Symbol:**

R revised

Table 4

**Seasonally Adjusted and Trend Guest Nights<sup>(1)</sup>**  
By accommodation type

Accommodation type	Series ref: ACSM	Month													
		2006												2007	
		Feb	Mar	Apr	May	Jun	Jul	Aug	Sep	Oct	Nov	Dec	Jan	Feb	
<b>Seasonally adjusted guest nights (000)<sup>(2)</sup></b>															
Hotels/resorts	S4SAZ03	834 R	817 R	823 R	830 R	828 R	793 R	834 R	836 R	855 R	860 R	859 R	861 R	863	
Motels/motor inns/apartments	S4SBZ03	884 R	890 R	885 R	889 R	878 R	867 R	907 R	892 R	915 R	908 R	900 R	901 R	931	
Hosted accommodation <sup>(3)</sup>	S4SCZ03	49 R	47 R	48 R	42 R	47 R	48 R	46 R	48 R	50 R	49 R	48 R	49 R	52	
Backpackers/hostels	S4SDZ03	357 R	359 R	353 R	348 R	350 R	343 R	361 R	359 R	372 R	369 R	365 R	370 R	375	
Caravan parks/camping grounds	S4SEZ03	503 R	497 R	511 R	523 R	485 R	512 R	527 R	525 R	546 R	521 R	513 R	512 R	564	
<b>Percentage change from previous month</b>															
Hotels/resorts	S4SAZ03	3.1 R	-2.1 R	0.8 R	0.9 R	-0.3 R	-4.2 R	5.2 R	0.2 R	2.3 R	0.6 R	-0.1 R	0.3 R	0.1	
Motels/motor inns/apartments	S4SBZ03	-1.4 R	0.7 R	-0.5 R	0.5 R	-1.3 R	-1.3 R	4.7 R	-1.6 R	2.5 R	-0.8 R	-0.8 R	0.1 R	3.3	
Hosted accommodation <sup>(3)</sup>	S4SCZ03	0 R	-4.5 R	1.1 R	-12.1 R	11.2 R	4.1 R	-5.2 R	4.0 R	5.6 R	-2.3 R	-2.0 R	1.6 R	5.1	
Backpackers/hostels	S4SDZ03	0.3 R	0.6 R	-1.7 R	-1.5 R	0.5 R	-1.8 R	5.2 R	-0.5 R	3.5 R	-0.6 R	-1.2 R	1.4 R	1.5	
Caravan parks/camping grounds	S4SEZ03	-1.1 R	-1.2 R	2.7 R	2.5 R	-7.4 R	5.8 R	2.9 R	-0.4 R	4.0 R	-4.4 R	-1.7 R	-0.2 R	10.2	
<b>Guest nights trend (000)<sup>(4)</sup></b>															
Hotels/resorts	S4TAZ03	816 R	818 R	820 R	824 R	828 R	832 R	836 R	841 R	846 R	851 R	856 R	860 R	865	
Motels/motor inns/apartments	S4TBZ03	880 R	881 R	883 R	885 R	888 R	891 R	893 R	897 R	900 R	904 R	908 R	912 R	915	
Hosted accommodation <sup>(3)</sup>	S4TCZ03	47 R	47 R	48 R	48 R	48 R	48 R	48 R	49 R	49 R	49 R	50 R	50		
Backpackers/hostels	S4TDZ03	356 R	355 R	353 R	351 R	350 R	352 R	356 R	360 R	365 R	368 R	370 R	372 R	372	
Caravan parks/camping grounds	S4TEZ03	506 R	506 R	506 R	508 R	511 R	514 R	518 R	521 R	524 R	527 R	530 R	533 R	536	
<b>Percentage change from previous month</b>															
Hotels/resorts	S4TAZ03	0.1 R	0.2 R	0.3 R	0.4 R	0.5 R	0.5 R	0.5 R	0.6 R	0.6 R	0.6 R	0.6 R	0.5 R	0.6	
Motels/motor inns/apartments	S4TBZ03	0.1 R	0.2 R	0.2 R	0.3 R	0.3 R	0.3 R	0.3 R	0.4 R	0.4 R	0.4 R	0.4 R	0.4 R	0.4	
Hosted accommodation <sup>(3)</sup>	S4TCZ03	0.5 R	0.3 R	0.2 R	0.2 R	0.2 R	0.2 R	0.3 R	0.5 R	0.6 R	0.7 R	0.7 R	0.8 R	0.9	
Backpackers/hostels	S4TDZ03	0.5 R	-0.2 R	-0.7 R	-0.6 R	-0.1 R	0.6 R	1.1 R	1.3 R	1.2 R	0.8 R	0.6 R	0.5 R	0.2	
Caravan parks/camping grounds	S4TEZ03	-0.4 R	-0.1 R	0.1 R	0.4 R	0.6 R	0.6 R	0.7 R	0.6 R	0.6 R	0.6 R	0.6 R	0.6 R	0.6	

(1) All figures are subject to revision when the seasonal adjustment program is run each period.

(2) The seasonally adjusted series differs from the actual series in that the seasonal changes have been removed.

(3) Hosted accommodation includes private hotels, guest houses, bed and breakfasts, and farmstays.

(4) The trend series differs from the actual series in that both the seasonal and irregular components have been removed.

**Symbol:**

R revised

Table 5

## North Island Guest Nights

	Actual series		Seasonally adjusted series <sup>(1)(2)</sup>		Trend series <sup>(1)(3)</sup>	
	Guest nights (000)	Change from same month previous year (percent)	Guest nights (000)	Change from previous month (percent)	Guest nights (000)	Change from previous month (percent)
<i>Series ref: ACS</i>	<i>S4A9R03</i>		<i>S4S9R03</i>		<i>S4T9R03</i>	
<b>Month</b>						
2004 Feb	1,742	2.1	1,487 R	0 R	1,485 R	0.4 R
Mar	1,711	3.1	1,479 R	-0.6 R	1,491 R	0.4 R
Apr	1,541	2.0	1,497 R	1.2 R	1,496 R	0.3 R
May	1,115	1.4	1,500 R	0.2 R	1,501 R	0.3 R
Jun	1,087	13.0	1,508 R	0.5 R	1,505 R	0.3 R
Jul	1,286	6.5	1,526 R	1.1 R	1,508 R	0.2 R
Aug	1,140	3.0	1,498 R	-1.8 R	1,510 R	0.2 R
Sep	1,281	4.0	1,524 R	1.8 R	1,512 R	0.1 R
Oct	1,388	3.0	1,490 R	-2.3 R	1,513 R	0.1 R
Nov	1,491	3.1	1,508 R	1.2 R	1,514 R	0.1 R
Dec	1,807	2.1	1,528 R	1.3 R	1,516 R	0.1 R
2005 Jan	2,508	3.4	1,549 R	1.4 R	1,518 R	0.1 R
Feb	1,749	0.4	1,486 R	-4.0 R	1,521 R	0.2 R
Mar	1,890	10.5	1,629 R	9.6 R	1,523 R	0.1 R
Apr	1,546	0.3	1,501 R	-7.9 R	1,524 R	0.1 R
May	1,116	0.1	1,503 R	0.1 R	1,524 R	0 R
Jun	1,126	3.5	1,558 R	3.7 R	1,523 R	-0.1 R
Jul	1,336	3.9	1,581 R	1.5 R	1,521 R	-0.2 R
Aug	1,145	0.4	1,503 R	-4.9 R	1,518 R	-0.2 R
Sep	1,266	-1.2	1,500 R	-0.2 R	1,514 R	-0.3 R
Oct	1,410	1.6	1,512 R	0.8 R	1,509 R	-0.3 R
Nov	1,481	-0.7	1,496 R	-1.0 R	1,505 R	-0.3 R
Dec	1,743	-3.5	1,482 R	-0.9 R	1,501 R	-0.3 R
2006 Jan	2,397	-4.4	1,484 R	0.1 R	1,499 R	-0.2 R
Feb	1,788	2.2	1,516 R	2.1 R	1,499 R	0 R
Mar	1,769	-6.4	1,522 R	0.4 R	1,501 R	0.2 R
Apr	1,555	0.6	1,512 R	-0.7 R	1,507 R	0.4 R
May	1,117	0.1	1,507 R	-0.3 R	1,515 R	0.5 R
Jun	1,087	-3.4	1,501 R	-0.4 R	1,524 R	0.6 R
Jul	1,259	-5.7	1,486 R	-1.0 R	1,534 R	0.6 R
Aug	1,195	4.4	1,569 R	5.6 R	1,544 R	0.7 R
Sep	1,327	4.8	1,569 R	0 R	1,554 R	0.7 R
Oct	1,489	5.6	1,597 R	1.8 R	1,564 R	0.6 R
Nov	1,571	6.1	1,590 R	-0.4 R	1,573 R	0.6 R
Dec	1,825	4.7	1,556 R	-2.2 R	1,583 R	0.6 R
2007 Jan	2,517	5.0	1,558 R	0.2 R	1,591 R	0.5 R
Feb	1,920	7.4	1,627	4.4	1,600	0.6

(1) All figures are subject to revision when the seasonal adjustment program is run each period.

(2) The seasonally adjusted series differs from the actual series in that the seasonal changes have been removed.

(3) The trend series differs from the actual series in that both the seasonal and irregular components have been removed.

**Symbol:**

R revised

Table 6

## South Island Guest Nights

	Actual series		Seasonally adjusted series <sup>(1)(2)</sup>		Trend series <sup>(1)(3)</sup>		
	Guest nights (000)	Change from same month previous year (percent)	Guest nights (000)	Change from previous month (percent)	Guest nights (000)	Change from previous month (percent)	
<i>Series ref: ACS</i>	<i>S4A9S03</i>		<i>S4S9S03</i>		<i>S4T9S03</i>		
<b>Month</b>							
2004	Feb	1,424	4.3	1,059 R	1.8 R	1,064 R	0.7 R
	Mar	1,339	3.9	1,058 R	-0.1 R	1,071 R	0.7 R
	Apr	1,150	7.0	1,073 R	1.4 R	1,077 R	0.6 R
	May	694	8.3	1,083 R	1.0 R	1,083 R	0.5 R
	Jun	620	17.8	1,120 R	3.4 R	1,088 R	0.5 R
	Jul	825	4.2	1,077 R	-3.9 R	1,092 R	0.4 R
	Aug	795	6.4	1,079 R	0.2 R	1,095 R	0.3 R
	Sep	906	10.9	1,135 R	5.2 R	1,098 R	0.2 R
	Oct	926	2.3	1,065 R	-6.1 R	1,099 R	0.1 R
	Nov	1,162	8.6	1,119 R	5.1 R	1,099 R	0 R
	Dec	1,367	0.4	1,095 R	-2.1 R	1,099 R	0 R
2005	Jan	1,830	5.9	1,103 R	0.8 R	1,098 R	-0.1 R
	Feb	1,463	2.7	1,082 R	-2.0 R	1,097 R	-0.1 R
	Mar	1,499	11.9	1,184 R	9.4 R	1,096 R	-0.1 R
	Apr	1,097	-4.6	1,020 R	-13.8 R	1,094 R	-0.1 R
	May	692	-0.2	1,079 R	5.8 R	1,093 R	-0.1 R
	Jun	703	13.4	1,264 R	17.1 R	1,092 R	-0.1 R
	Jul	834	1.0	1,094 R	-13.4 R	1,091 R	-0.1 R
	Aug	797	0.3	1,090 R	-0.4 R	1,091 R	0 R
	Sep	863	-4.8	1,082 R	-0.8 R	1,091 R	0.1 R
	Oct	952	2.8	1,097 R	1.4 R	1,093 R	0.1 R
	Nov	1,138	-2.0	1,092 R	-0.5 R	1,095 R	0.2 R
	Dec	1,327	-2.9	1,068 R	-2.2 R	1,097 R	0.2 R
2006	Jan	1,866	2.0	1,124 R	5.3 R	1,099 R	0.2 R
	Feb	1,504	2.8	1,107 R	-1.6 R	1,100 R	0.2 R
	Mar	1,393	-7.1	1,100 R	-0.6 R	1,102 R	0.1 R
	Apr	1,190	8.5	1,107 R	0.6 R	1,103 R	0.1 R
	May	718	3.8	1,121 R	1.3 R	1,104 R	0.1 R
	Jun	615	-12.5	1,103 R	-1.6 R	1,105 R	0.1 R
	Jul	823	-1.3	1,085 R	-1.6 R	1,106 R	0.1 R
	Aug	807	1.3	1,108 R	2.1 R	1,108 R	0.2 R
	Sep	870	0.8	1,088 R	-1.7 R	1,110 R	0.2 R
	Oct	985	3.4	1,136 R	4.4 R	1,113 R	0.3 R
	Nov	1,168	2.7	1,120 R	-1.4 R	1,117 R	0.3 R
	Dec	1,385	4.4	1,117 R	-0.2 R	1,120 R	0.3 R
2007	Jan	1,846	-1.1	1,110 R	-0.6 R	1,125 R	0.4 R
	Feb	1,573	4.6	1,157	4.2	1,129	0.4

(1) All figures are subject to revision when the seasonal adjustment program is run each period.

(2) The seasonally adjusted series differs from the actual series in that the seasonal changes have been removed.

(3) The trend series differs from the actual series in that both the seasonal and irregular components have been removed.

**Symbol:**

R revised