



Hot Off The Press

LATEST STATISTICS FROM STATISTICS NEW ZEALAND

Embargoed until 10:45am – 12 March 2007

Accommodation Survey

January 2007

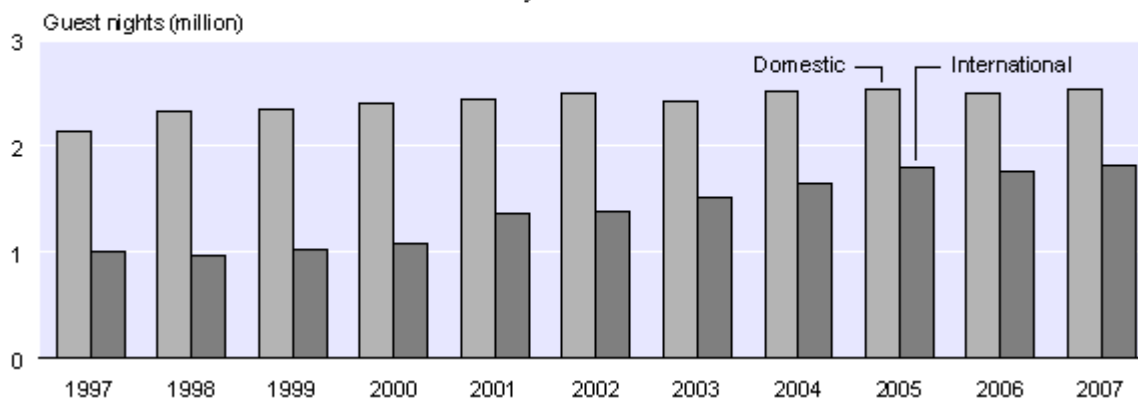
Highlights

Compared with January 2006:

- Total guest nights were 2 percent higher.
- Guest nights were 5 percent higher in the North Island.
- Guest nights were 1 percent lower in the South Island.
- International guest nights were 3 percent higher.
- Domestic guest nights were 2 percent higher.
- Eight of the 12 regions recorded more guest nights.

International and Domestic Guest Nights

January 1997–2007



Dallas Welch
Acting Government Statistician

12 March 2007
Cat 70.905 Set 06/07 – 137

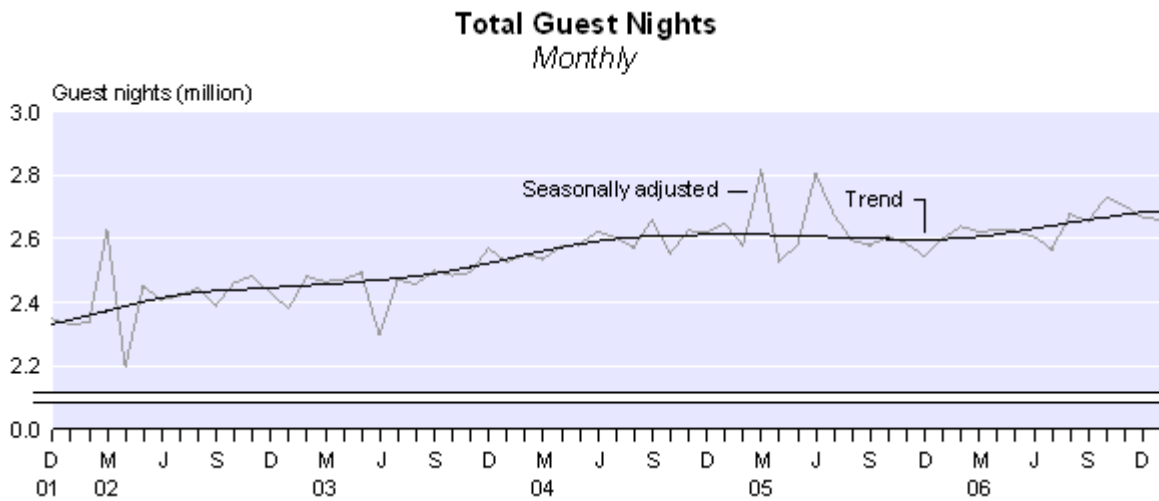
There is a companion Media Release published – [Accommodation Survey: January 2007](#).

Commentary

Total guest nights

Total guest nights in short-term commercial accommodation were 4.4 million in January 2007, up 2 percent compared with January 2006 and 1 percent compared with January 2005. The January 2007 guest night total was the highest recorded for any month since the survey began in July 1996.

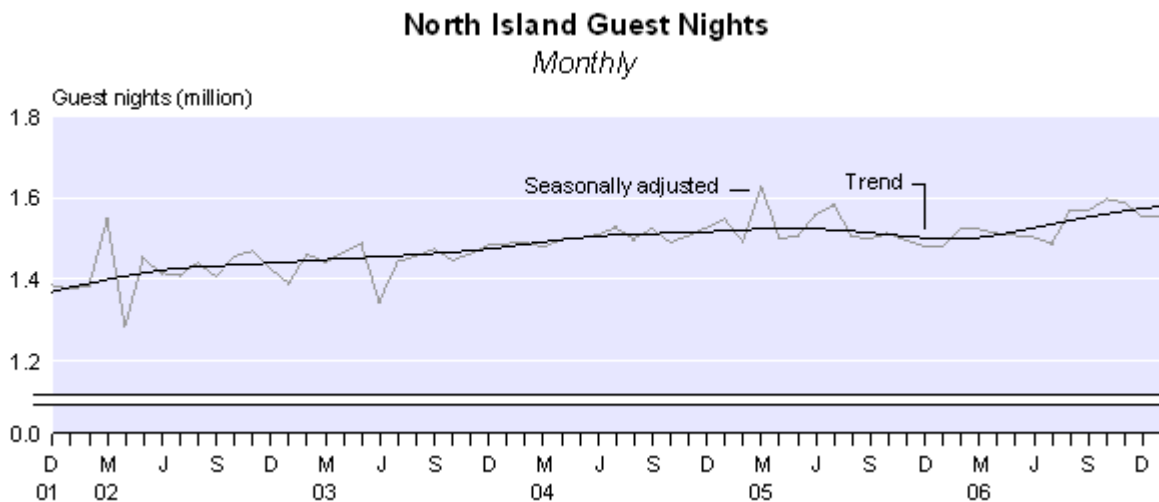
The trend in total guest nights has been increasing since January 2006 after a flat period that began in November 2004. In January 2007, the trend level was 3 percent higher than in both January 2006 and 2005.



Guest nights by island

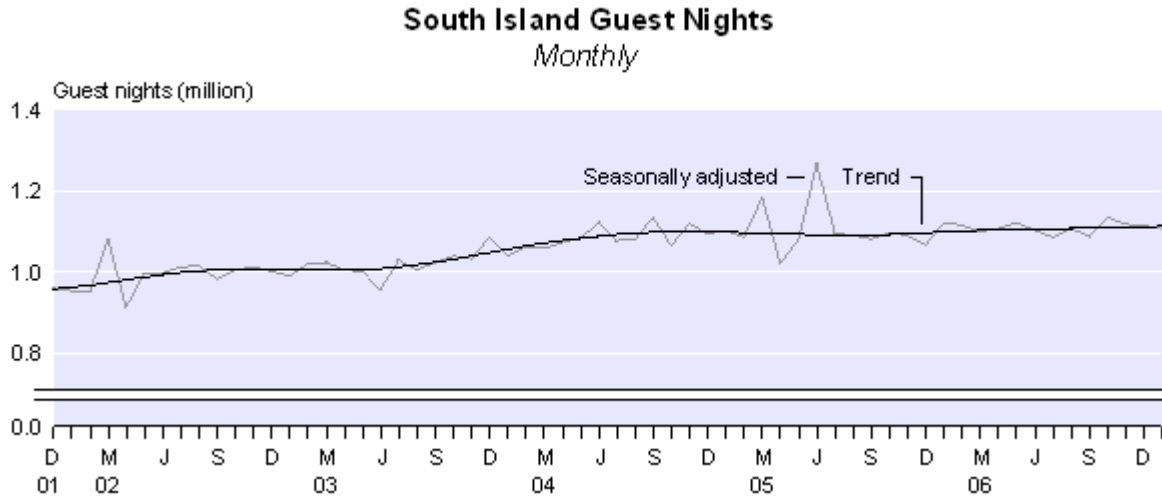
Guest nights in the North Island were 2.5 million in January 2007, a 5 percent increase compared with January 2006. This is the highest monthly total for the North Island since the survey began.

The trend in North Island guest nights has been increasing since February 2006 after a period of flatness that began in late 2004. In January 2007, the trend level was 5 percent higher than in January 2006 and 4 percent higher than in January 2005.



Guest nights in the South Island were 1.8 million, down 1 percent compared with January 2006.

The trend in South Island guest nights has been flattening recently following a period of increases that began in September 1997. In January 2007, the trend level was 1 percent higher than in both January 2006 and 2005.



Guest nights by region

Eight of the 12 regions recorded more guest nights in January 2007 than in January 2006. The Northland region (up 45,000 or 14 percent) had the largest absolute increase in guest nights, followed by Auckland (up 32,000 or 6 percent), Bay of Plenty (up 19,000 or 4 percent) and Wellington (up 18,000 or 8 percent).

Nelson/Marlborough/Tasman (down 13,000 or 3 percent) recorded the largest absolute decrease in guest nights, followed by Canterbury (down 12,000 or 2 percent). Other regions to record a decrease were Taranaki/Manawatu-Wanganui and Southland.

The Wellington, West Coast and Otago regions all recorded their highest monthly guest night totals since the survey began.

Origin of guests

International visitors spent 1.8 million guest nights in short-term commercial accommodation in January 2007, a 3 percent increase compared with January 2006, and a 1 percent increase compared with January 2005.

The Other Europe grouping (which excludes UK/Ireland and Germany) recorded the largest absolute increase in international guest nights (up 24,000 or 10 percent), followed by UK/Ireland (up 17,000 or 5 percent). Visitors from Australia (down 11,000 or 3 percent) and Japan (down 8,000 or 8 percent) recorded fewer guest nights comparing the two January months.

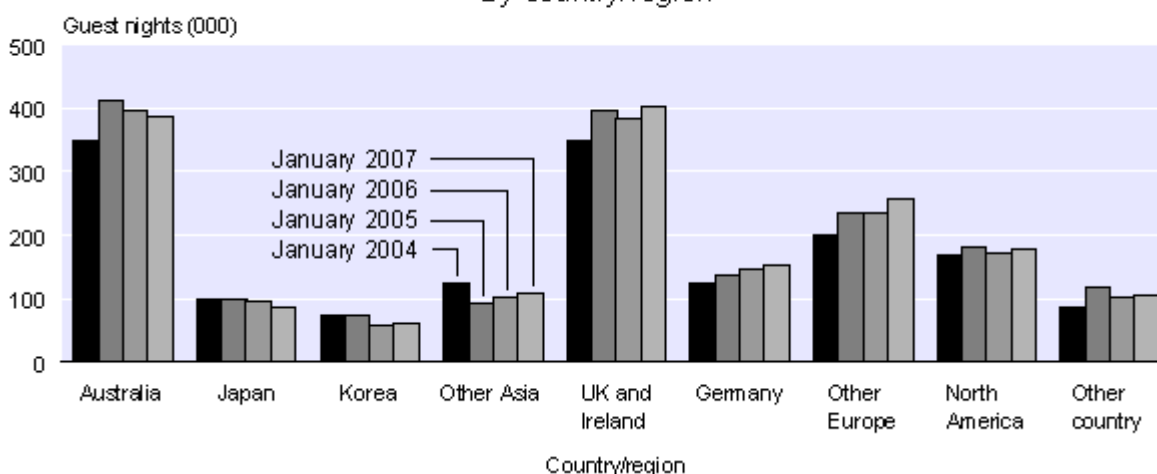
In January 2007, international guest nights were 5 percent higher in the North Island and 1 percent higher in the South Island compared with January 2006. Eight of the 12 regions recorded more international guest nights, with Waikato (up 15,000 or 15 percent) having the largest absolute increase, followed by the West Coast (up 14,000 or 14 percent) and Northland (up 10,000 or 8 percent) regions.

Domestic guest nights accounted for 2.5 million guest nights in January 2007, a 2 percent increase compared with January 2006 and a similar level to January 2005.

In January 2007, domestic guest nights were 5 percent higher in the North Island and 3 percent lower in the South Island. Six of the 12 regions recorded more domestic guest nights, with Northland (up 36,000 or 18 percent) having the largest absolute increase, followed by Auckland (up 24,000 or 10 percent) and Bay of Plenty (up 21,000 or 6 percent).

The Canterbury region (down 21,000 or 7 percent) showed the largest absolute decrease in domestic guest nights, followed by Nelson/Marlborough/Tasman (down 11,000 or 4 percent) and Taranaki/Manawatu-Wanganui (down 10,000 or 6 percent).

International Guest Nights By country/region



There was a response rate of 56 percent to the Accommodation Survey question on origin of guests this month. The response rate for this question normally ranges between 55 and 60 percent. Figures for those establishments that failed to respond have been imputed (see Non-response imputation below). Such high levels of imputation can affect data quality, especially for regional statistics and/or statistics by accommodation type.

Comparison with short-term overseas visitor arrival statistics

The Hot Off The Press release *External Migration: January 2007* shows that short-term overseas visitor arrivals in New Zealand for January 2007 were down 3,800 (2 percent) from January 2006. This follows an increase of 12,000 (4 percent) in December 2006 compared with December 2005.

In contrast, the number of stay days for all visitor arrivals in January 2007 was at a similar level to January 2006. This follows a 6 percent increase in December 2006 compared with December 2005.

In both January 2007 and 2006, the average length of stay for visitors arriving was 23 days. For visitors arriving in December 2006, the average length of stay was 23 days, compared with 22 days for December 2005.

New Zealand resident short-term departures for January were up 1,400 (1 percent) on January 2006. This follows an increase of 2,000 (1 percent) in December 2006 compared with December 2005.

Guest nights by accommodation type

Four of the five accommodation types recorded more guest nights in January 2007 than in January 2006. Hotels (up 62,000 or 7 percent) had the largest absolute increase, followed by backpackers/hostels (up 21,000 or 4 percent). Hosted accommodation was the only accommodation type to record a small decrease in guest nights compared with January 2006. In January 2007, motels and backpackers/hostels recorded their highest monthly guest night totals since the survey began.

Caravan parks/camping grounds (35 percent) had the largest share of total guest nights in January 2007, followed by motels (28 percent) and hotels (23 percent). In a January month caravan parks/camping grounds traditionally record the largest share of total guest nights.

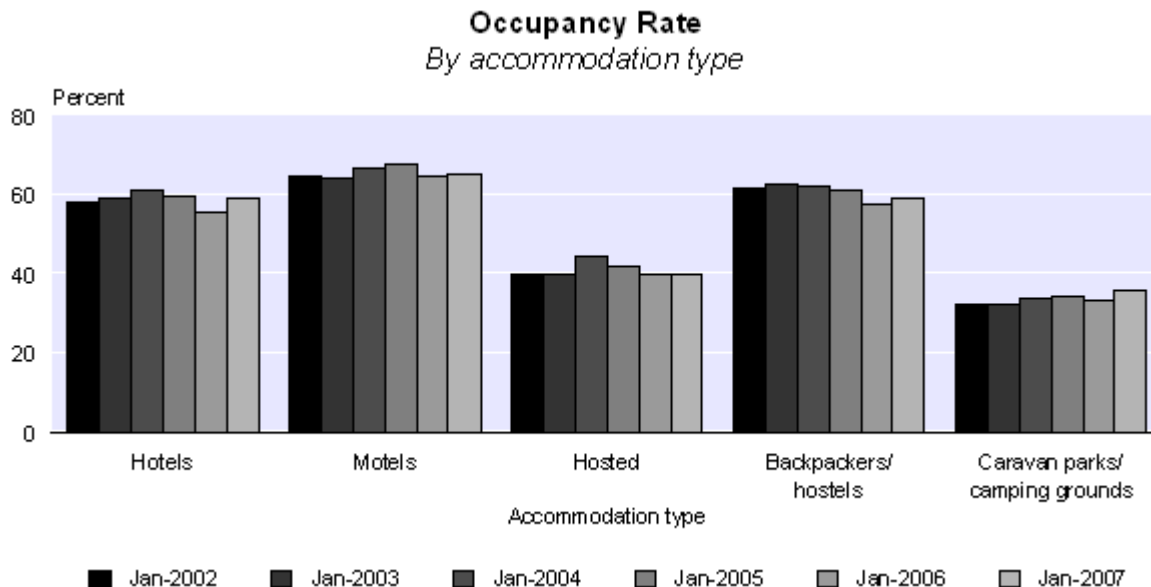
Occupancy rate

The January 2007 occupancy rate, excluding caravan parks/camping grounds, was 60 percent, compared with 58 percent in January 2006.

Accommodation capacity, excluding caravan parks/camping grounds, was 2 percent above the January 2006 level.

Motels (65 percent) recorded the highest occupancy rate of all the accommodation types in January 2007, followed by backpackers/hostels and hotels (both at 59 percent).

Excluding caravan parks/camping grounds, Nelson/Marlborough/Tasman (67 percent) had the highest occupancy rate in January 2007, followed by Otago (66 percent), and Hawke's Bay/Gisborne and Bay of Plenty (both at 64 percent).



Non-response imputation

When respondents do not answer questions in the Accommodation Survey, Statistics New Zealand estimates the missing information based on data from similar establishments in the same and/or similar areas. For more information, please refer to the Technical Notes of this release or contact Statistics NZ.

Response rates by accommodation type for January 2007

Accommodation type	Percentage of establishments responding to questions on guest nights, guest arrivals and stay unit nights	Percentage of the guest night estimate from establishments that responded to the question on guest nights	Percentage of the origin of guest estimate from establishments that responded to the questions on the origin of guests
Hotels	82 percent	93 percent	62 percent
Motels	79 percent	81 percent	57 percent
Hosted	81 percent	83 percent	63 percent
Backpackers/hostels	79 percent	79 percent	43 percent
Caravan parks / camping grounds	78 percent	85 percent	57 percent
Total New Zealand	80 percent	85 percent	56 percent

Survey sponsorship

The Accommodation Survey is a monthly survey undertaken by Statistics NZ and sponsored by the Ministry of Tourism.

For technical information contact:
Tehseen Islam or Karen Brohm
Christchurch 03 964 8700
Email: info@stats.govt.nz

Technical notes

Population

The target population for this survey is all 'geographic units' (called 'establishments' in this publication) that are classified as short-term (less than one month) commercial accommodation providers operating in New Zealand. In terms of the Australian and New Zealand Standard Industrial Classification (ANZSIC), the target population is taken from class 5710 (accommodation), and the part of class 5720 (pubs, taverns and bars) that also provides accommodation.

The survey frame is all short-term commercial accommodation-providing geographic units belonging to an economically significant 'enterprise'. Economic significance is generally determined as being GST registered and having a turnover of at least \$30,000 per annum.

Survey errors

This survey aims for 100 percent coverage of the population (ie a full census). In practice, however, an overall response rate of between 76 and 80 percent is usually achieved. The remaining units are given imputed values based upon the characteristics of similar establishments in the same or similar regions. Imputation introduces unknown errors into the estimates, and this should be borne in mind by users of the data. The size of these unknown errors is difficult to quantify.

Other errors occur for reasons such as respondent error, frame quality and errors in processing. While every effort is made to minimise these errors, they will still occur. It is not possible to quantify their effect.

Trend estimates

For any series, the survey estimates can be broken down into three components: trend, seasonal and irregular. While seasonally adjusted series have had the seasonal component removed, the trend series have had both the seasonal and the irregular components removed. Trend estimates reveal the underlying direction of movement in a series, and are likely to indicate turning points more accurately than seasonally adjusted estimates.

The accommodation trend series are calculated using the X-12-ARIMA seasonal adjustment package. They are based on optimal moving averages of the seasonally adjusted series, with an adjustment for outlying values. The X-12-ARIMA package is an updated version of X-11-ARIMA, developed by the US Bureau of the Census.

The trend estimates towards the end of the series incorporate new data as it becomes available, and can therefore change as more observations are added to the series. Revisions can be particularly large if an observation is treated as an outlier in one month, but is found to be part of the underlying trend as further observations are added to the series. All trend estimates are subject to revisions each month, but normally only the last two or three estimates are likely to be substantially altered.

Trend estimates versus month-on-month comparisons

Trend estimates reveal the underlying direction of the movement in a series. In contrast, comparisons between one month and the same month in the previous year(s) do not take account of data recorded in between these periods, and are subject to one-off fluctuations. Reasons for fluctuations include changes in the timing of holidays, international crises, and large sporting and cultural events.

Seasonally adjusted estimates

The X-12-ARIMA package has been used to produce the seasonally adjusted estimates referred to in the Commentary text. Seasonal adjustment aims to eliminate the impact of regular seasonal events. These may be due to climatic effects (such as more guests staying in camping grounds during the summer) or calendar effects (such as holidays). This makes the data for adjacent months more comparable. All seasonally adjusted figures are subject to revision each month.

Further information about [seasonal adjustment](#) is available on the Statistics New Zealand website.

Classification of accommodation type

The predominant capacity provided determines the accommodation type. For instance, if a business provides both motel and camping ground accommodation, but the majority of its stay units are motel rooms, then it would be classified as a motel. The classification system used is the New Zealand Accommodation Classification, broadly defined below:

- Hotels: includes both hotels and resorts
- Motels: includes motor inns, apartments and motels
- Hosted: includes private hotels, guest houses, bed and breakfasts, and holiday farm (farmstay) accommodation
- Backpackers/hostels
- Caravan parks/camping grounds.

Further information on the classification system is available on request.

Classification of residence of guest

Every third month (January, April, July and October), the survey asks all respondents to classify their guests as coming from the following regions:

Domestic

Auckland
Wellington
Rest of North Island
Canterbury
Otago
Rest of South Island
Don't know

International

Australia
Japan
Korea
Other Asia
UK and Ireland
Germany
Other Europe
North America
Other
Don't know

Other definitions

Business frame

A register (maintained by Statistics NZ) of all economically significant businesses operating in New Zealand from which the survey population is drawn.

Establishment

The smallest statistical unit operating within a single physical location and owned by a single enterprise. The term is used to represent what is usually called the 'geographic unit' in other Statistics NZ publications.

Guest night

A guest night is equivalent to one guest spending one night at an establishment. For example, a motel with 15 guests spending two nights would report provision of 30 guest nights of accommodation.

Stay unit

The term used to describe the unit of accommodation that is available to be charged out to guests (eg a powered site in a caravan park, a bed in a backpackers, a room in a hotel or motel).

Capacity (stay unit nights available)

This is the basic measure of an establishment's accommodation capacity. It is defined as one stay unit multiplied by one night. For example, 10 units in a motel available for guest use (whether occupied or not) for the full 31 days in July would have an accommodation capacity of 310 stay unit nights.

Occupancy rate

This derived variable is calculated by dividing stay unit nights occupied by stay unit nights available. In the case of the motel above, if six of its 10 units were occupied every night in July, it would have $6 \times 31 = 186$ stay unit nights occupied, and its occupancy rate would be 60 percent.

Average length of stay

This derived variable is calculated by dividing total guest nights by total guest first nights.

More information

For more information, follow the [link](#) from the Technical notes of this release on the Statistics NZ website.

Confidentiality

Data collected and information contained in this publication must conform to the provisions of the Statistics Act 1975. This requires that published information maintains the confidentiality of individual respondents.

Copyright

Information obtained from Statistics NZ may be freely used, reproduced, or quoted unless otherwise specified. In all cases Statistics NZ must be acknowledged as the source.

Liability

While care has been used in processing, analysing and extracting information, Statistics NZ gives no warranty that the information supplied is free from error. Statistics NZ shall not be liable for any loss suffered through the use, directly or indirectly, of any information, product or service.

Timing

Timed statistical releases are delivered using postal and electronic services provided by third parties. Delivery of these releases may be delayed by circumstances outside the control of Statistics NZ. Statistics NZ accepts no responsibility for any such delays.

Next release ...

Accommodation Survey: February 2007 will be released on 12 April 2007.

Statistics New Zealand: The first source of independent information for your key decisions.

Tables

The following tables can be downloaded from the Statistics New Zealand website in Excel 97 format. If you do not have access to Excel 97 or higher, you may use the [Excel file viewer](#) to view, print and export the contents of the file.

List of tables

1. Establishments, capacity, guest nights, occupancy rate and average stay, by accommodation type
2. Occupancy rate excluding caravan parks/camping grounds, by region
3. Total guest nights
4. Seasonally adjusted and trend guest nights, by accommodation type
5. North Island guest nights
6. South Island guest nights

Accommodation pivot tables

The Accommodation Pivot Tables provide more detailed information, breaking the survey variables down by regional tourism organisation areas and territorial authority areas.

- **Regional Tourism Organisation (RTO) Area by Accommodation Type (Type)**
Contains number of establishments, capacity, occupancy rates, guest nights, guest arrivals, length of stay and some ratios of these variables.

The graph on the first worksheet will change to display the RTO and Type you select on the second worksheet. When printing the graph, select a cell rather than the graph so the heading will print.

- **Total Accommodation by Territorial Authority (TA)**
Contains number of establishments, capacity, occupancy rates, guest nights, guest arrivals, length of stay and some ratios of these variables.
- **Origin of Guests and Employment Information by Regional Tourism Organisation (RTO)**
Contains domestic and international guest night variables and employees.

Printing a selection of data in a spreadsheet

If you only want to print out some of the information in a spreadsheet, either select the pages you want in the print box, or hide the data you don't want to print by highlighting the columns or rows of data you don't want, then right click the mouse and select 'Hide'.

Accommodation Survey: January 2007

Table 1

Establishments, Capacity, Guest Nights, Occupancy Rate and Average Stay⁽¹⁾⁽²⁾⁽³⁾
By accommodation type

Accommodation type	Series ref: ACSM	Month												
		2006												2007
		Jan	Feb	Mar	Apr	May	Jun	Jul	Aug	Sep	Oct	Nov	Dec	Jan
Hotels/resorts														
Number of establishments	S1AA	576	577	574	573	573	569	566	566	566	568	569	570	569
Capacity (000)	S1AB	952	862	955	927	955	908	939	939	922	964	936	967	972
Guest nights (000)	S1AC	940	1,006	989	831	667	603	727	733	766	852	977	886	1,002
Occupancy rate (percent)	S1AD	55.4	71.3	64.9	53.6	47.2	44.6	47.9	50.3	52.5	55.7	65.8	52.9	58.8
Average stay (nights)	S1AE	1.8	1.7	1.7	1.7	1.8	1.8	2.0	1.9	1.9	1.8	1.7	1.8	1.9
Motels/motor inns/apartments														
Number of establishments	S1BA	1,715	1,714	1,717	1,715	1,706	1,703	1,703	1,716	1,732	1,745	1,748	1,757	1,760
Capacity (000)	S1BB	824	735	815	789	814	786	814	821	800	834	809	839	840
Guest nights (000)	S1BC	1,233	1,067	1,079	956	637	638	797	742	814	875	902	972	1,242
Occupancy rate (percent)	S1BD	64.6	71.4	67.1	57.0	43.7	42.9	47.8	46.8	50.5	52.8	58.9	53.3	65.0
Average stay (nights)	S1BE	1.9	1.8	1.8	1.8	1.8	1.8	1.9	2.0	1.8	1.8	1.8	1.8	1.9
Hosted accommodation⁽⁴⁾														
Number of establishments	S1CA	667	661	659	653	598	575	552	566	594	628	658	663	674
Capacity (000)	S1CB	105	95	105	101	97	91	91	94	93	101	100	104	105
Guest nights (000)	S1CC	82	84	68	48	21	21	32	29	31	42	55	64	82
Occupancy rate (percent)	S1CD	39.5	47.1	34.8	25.3	13.0	13.5	17.9	16.7	18.4	22.9	30.5	31.4	39.6
Average stay (nights)	S1CE	1.8	1.8	1.7	1.8	1.9	2.0	2.3	2.3	2.0	1.8	1.7	1.8	1.8
Backpackers/hostels														
Number of establishments	S1DA	437	440	441	437	429	413	405	408	419	436	438	443	442
Capacity (000)	S1DB	744	683	762	734	751	716	735	737	721	762	736	760	760
Guest nights (000)	S1DC	483	458	464	384	276	251	287	276	278	319	390	427	504
Occupancy rate (percent)	S1DD	57.4	59.1	54.9	47.8	33.6	32.1	35.9	34.5	34.9	37.5	47.7	49.8	59.0
Average stay (nights)	S1DE	1.8	1.8	1.9	1.9	2.1	2.0	2.0	2.1	2.0	1.9	1.9	1.8	1.8
Total excluding caravan parks/camping grounds														
Number of establishments	S1XA	3,395	3,392	3,391	3,378	3,306	3,260	3,226	3,256	3,311	3,377	3,413	3,433	3,445
Capacity (000)	S1XB	2,626	2,375	2,637	2,551	2,617	2,501	2,581	2,591	2,535	2,661	2,580	2,670	2,677
Guest nights (000)	S1XC	2,738	2,616	2,601	2,219	1,602	1,514	1,842	1,780	1,890	2,088	2,324	2,348	2,830
Occupancy rate (percent)	S1XD	58.2	66.8	61.5	51.9	40.9	39.3	43.4	43.5	45.6	48.3	57.1	51.3	60.0
Average stay (nights)	S1XE	1.8	1.8	1.8	1.8	1.8	1.9	1.9	2.0	1.9	1.8	1.8	1.8	1.9
Caravan parks/camping grounds														
Number of establishments	S1EA	420	421	419	419	404	400	395	394	399	409	411	419	418
Capacity (000)	S1EB	1,683	1,522	1,667	1,609	1,521	1,446	1,480	1,480	1,441	1,593	1,540	1,622	1,622
Guest nights (000)	S1EC	1,525	676	561	527	234	189	240	222	307	386	416	862	1,534
Occupancy rate (percent)	S1ED	33.4	20.2	16.0	14.5	8.0	6.6	7.8	7.5	9.7	11.4	13.3	21.8	35.8
Average stay (nights)	S1EE	3.0	1.9	1.7	1.9	1.8	1.9	1.9	1.9	1.8	1.7	1.7	2.2	2.9
Total														
Number of establishments	S19A	3,815	3,813	3,810	3,797	3,710	3,660	3,621	3,650	3,710	3,786	3,824	3,852	3,863
Capacity (000)	S19B	4,308	3,898	4,304	4,160	4,138	3,947	4,061	4,071	3,976	4,255	4,120	4,292	4,299
Guest nights (000)	S19C	4,263	3,292	3,162	2,746	1,836	1,702	2,082	2,002	2,197	2,474	2,740	3,210	4,364
Occupancy rate (percent)	S19D	48.5	48.6	43.9	37.4	28.8	27.3	30.4	30.4	32.6	34.5	40.7	40.1	50.9
Average stay (nights)	S19E	2.1	1.8	1.8	1.8	1.8	1.9	1.9	2.0	1.9	1.8	1.8	1.9	2.1

For footnotes, see end of table.

Accommodation Survey: January 2007

Table 1
continued

Establishments, Capacity, Guest Nights, Occupancy Rate and Average Stay⁽¹⁾⁽²⁾⁽³⁾
By accommodation type

Accommodation type	Series ref: ACSM	Month												
		2006												2007
		Jan	Feb	Mar	Apr	May	Jun	Jul	Aug	Sep	Oct	Nov	Dec	Jan
Percentage change from the same month of the previous year														
Hotels/resorts														
Number of establishments	S1AA	2.1	2.3	1.2	1.8	2.0	1.2	0.2	0.2	-0.5	-0.9	-1.9	-1.0	-1.2
Capacity	S1AB	5.9	5.9	4.7	4.8	2.2	-0.2	-0.3	-0.4	0.9	1.4	1.2	1.6	2.0
Guest nights	S1AC	-3.0	2.0	-2.7	-0.7	0.2	-7.4	-6.3	2.5	2.4	6.2	4.2	7.1	6.6
Occupancy rate	S1AD	-7.2	-3.7	-2.9	-6.8	-0.3	-4.5	-4.6	3.7	0.3	3.0	2.5	2.5	6.2
Average stay (nights)	S1AE	-5.2	2.6	-2.0	0.3	-0.2	-0.7	-1.5	0.3	0.4	3.7	1.5	3.4	5.9
Motels/motor inns/apartments														
Number of establishments	S1BA	2.9	2.0	2.0	1.5	1.1	2.0	1.7	2.6	2.5	3.0	2.9	2.6	2.6
Capacity	S1BB	5.3	3.2	2.7	2.0	2.3	2.6	2.4	2.8	2.9	3.1	3.3	3.0	1.9
Guest nights	S1BC	0.5	1.0	-4.8	3.3	1.9	-3.3	-2.7	3.9	3.1	2.6	4.8	4.6	0.7
Occupancy rate	S1BD	-3.9	-2.9	-3.5	-3.0	0.3	-5.8	-4.0	1.3	0.4	-0.3	1.5	1.7	0.6
Average stay (nights)	S1BE	1.3	-0.3	-0.6	2.6	1.0	1.2	1.3	3.5	-0.5	0.9	2.1	1.6	0.9
Hosted accommodation⁽⁴⁾														
Number of establishments	S1CA	11.5	7.5	5.3	8.7	4.0	2.1	4.5	3.1	4.4	2.3	1.7	0.8	1.0
Capacity	S1CB	11.0	8.8	7.5	9.4	5.4	2.2	5.6	5.0	5.0	4.4	0.9	1.3	-0.1
Guest nights	S1CC	6.2	9.0	-3.7	13.8	-2.4	-13.7	5.1	-1.1	7.1	9.0	9.8	5.0	-0.3
Occupancy rate	S1CD	-4.9	-0.4	-9.8	0.9	-6.5	-12.5	3.2	-2.5	2.4	7.3	9.3	4.9	0.3
Average stay (nights)	S1CE	3.7	2.4	0.7	0.7	8.5	6.4	3.6	10.2	-3.1	2.4	0.9	3.5	-1.1
Backpackers/hostels														
Number of establishments	S1DA	9.0	8.9	7.6	6.6	7.8	4.0	3.1	2.0	1.2	0.7	0.7	0.2	1.1
Capacity	S1DB	7.2	7.8	7.4	7.0	7.5	5.9	2.3	1.7	1.0	1.8	1.0	1.1	2.1
Guest nights	S1DC	1.0	5.3	2.0	4.9	1.8	-7.4	-3.4	4.7	6.7	8.8	7.3	2.8	4.3
Occupancy rate	S1DD	-5.8	-3.5	-3.3	1.8	-5.2	-12.6	-1.9	3.5	5.6	7.2	7.0	0.1	2.7
Average stay (nights)	S1DE	-1.3	2.3	0.1	-1.2	7.4	5.3	-1.6	0.7	0	0.8	-0.3	-1.9	0.1
Total excluding caravan parks/camping grounds														
Number of establishments	S1XA	5.1	4.0	3.2	3.5	2.6	2.2	2.1	2.2	2.2	1.9	1.5	1.3	1.5
Capacity	S1XB	6.3	5.7	4.9	4.7	3.8	2.5	1.5	1.4	1.7	2.2	1.8	1.9	1.9
Guest nights	S1XC	-0.5	2.4	-2.8	2.2	1.1	-5.8	-4.1	3.4	3.4	5.1	5.1	5.2	3.4
Occupancy rate	S1XD	-5.7	-3.4	-3.5	-3.4	-1.6	-7.2	-3.8	2.6	1.5	2.8	3.4	1.6	3.1
Average stay (nights)	S1XE	-1.4	1.3	-1.0	1.1	1.6	1.1	-0.2	1.8	-0.1	2.1	1.5	1.7	2.4
Caravan parks/camping grounds														
Number of establishments	S1EA	1.9	2.7	1.9	4.2	2.5	2.0	3.1	3.7	2.0	1.2	0.5	0.2	-0.5
Capacity	S1EB	0.8	1.4	1.2	2.0	-0.1	-1.0	-0.4	0.3	-0.8	-2.0	-2.9	-3.2	-3.6
Guest nights	S1EC	-3.9	2.9	-21.3	11.5	4.6	-14.9	-3.2	0.8	1.9	2.9	2.1	2.8	0.6
Occupancy rate	S1ED	-2.8	-0.6	-18.1	9.2	8.6	-10.2	-0.8	5.9	5.2	7.6	5.7	9.6	7.2
Average stay (nights)	S1EE	0.5	0.1	-8.9	2.7	-0.4	-0.1	0.4	-1.8	-2.0	-1.6	-1.3	0.8	-0.8
Total														
Number of establishments	S19A	4.8	3.8	3.1	3.6	2.6	2.1	2.2	2.4	2.1	1.8	1.4	1.2	1.3
Capacity	S19B	4.0	4.0	3.5	3.6	2.3	1.2	0.8	1.0	0.8	0.6	0	-0.1	-0.2
Guest nights	S19C	-1.7	2.5	-6.7	3.9	1.5	-6.9	-4.0	3.1	3.2	4.7	4.6	4.6	2.4
Occupancy rate	S19D	-4.3	-2.0	-5.1	-1.1	0.4	-6.6	-3.1	3.2	2.5	4.5	4.9	4.2	4.9
Average stay (nights)	S19E	-1.3	1.1	-2.6	1.4	1.3	1.0	-0.1	1.4	-0.4	1.5	1.0	1.4	1.3

- (1) Establishments that are temporarily closed for more than 14 days during a month are excluded from the results.
(2) Establishments primarily offering accommodation for periods of one month or more are excluded from the survey.
(3) Monthly capacity shows the number of stay units available and is affected by the number of days in a month.
(4) Hosted accommodation includes private hotels, guest houses, bed and breakfasts, and farmstays.

Accommodation Survey: January 2007

Table 2

Occupancy Rate Excluding Caravan Parks/Camping Grounds⁽¹⁾
By region

Region	Series ref: ACSM	Month												
		2006												2007
		Jan	Feb	Mar	Apr	May	Jun	Jul	Aug	Sep	Oct	Nov	Dec	Jan
Occupancy rate (percent)														
Northland	S2RAB	61.6	63.2	55.0	47.3	33.1	29.0	31.1	29.2	34.0	43.0	49.6	47.3	63.0
Auckland	S2RBB	57.6	69.8	67.4	55.7	50.5	50.2	48.6	53.0	54.9	58.8	67.2	56.5	62.1
Waikato	S2RCB	53.2	56.3	55.7	46.4	34.0	36.6	37.3	34.5	38.6	40.2	50.5	46.6	56.4
Bay of Plenty	S2RDB	62.5	68.6	61.3	55.5	44.3	43.6	45.6	45.0	48.2	54.4	60.0	55.7	63.6
Hawke's Bay/Gisborne	S2REB	58.8	63.9	62.7	49.4	37.2	37.9	36.5	38.5	40.9	47.2	51.1	49.5	64.0
Taranaki/Manawatu-Wanganui	S2RFB	40.9	46.4	46.2	39.1	35.0	33.9	44.9	43.2	47.9	40.2	40.5	34.6	42.4
Wellington	S2RGB	52.5	70.4	67.8	58.6	52.3	50.8	56.3	51.3	56.5	58.7	65.6	52.6	57.8
Nelson/Marlborough/Tasman	S2RHB	67.1	70.6	61.1	48.4	32.3	31.0	32.1	31.2	32.7	38.0	51.6	53.9	67.3
Canterbury	S2RIB	59.5	68.9	62.2	52.2	39.1	35.6	40.8	38.5	44.0	48.3	58.7	51.7	58.6
West Coast	S2RJB	58.7	64.9	56.6	44.5	28.1	23.3	25.9	24.7	28.7	36.9	49.5	45.9	58.6
Otago	S2RKB	65.3	75.8	65.1	58.3	42.3	40.1	54.5	59.6	50.3	45.9	58.6	55.7	65.7
Southland	S2RLB	59.1	68.8	58.0	45.4	30.8	24.7	25.7	27.2	29.5	37.9	50.3	46.4	56.4
New Zealand	S2RZB	58.2	66.8	61.5	51.9	40.9	39.3	43.4	43.5	45.6	48.3	57.1	51.3	60.0
Percentage change from the same month of the previous year														
Northland	S2RAB	-1.5	2.7	-2.7	8.3	-1.1	3.7	3.2	-0.5	2.5	14.0	4.8	-1.2	2.3
Auckland	S2RBB	-11.0	-7.8	-4.4	-10.3	-3.2	-2.9	-12.3	4.8	1.8	5.2	3.7	1.3	7.7
Waikato	S2RCB	-0.2	-1.2	1.3	-3.3	-3.1	-4.4	-4.9	0.9	0.1	-2.2	7.3	5.6	6.1
Bay of Plenty	S2RDB	-7.3	0.7	-1.8	-0.4	-3.1	-7.9	-6.3	9.2	7.8	3.8	1.6	2.2	1.7
Hawke's Bay/Gisborne	S2REB	-9.3	-0.2	2.3	-3.8	-3.6	-0.5	-4.8	4.5	-0.5	1.8	8.9	5.2	8.7
Taranaki/Manawatu-Wanganui	S2RFB	-2.1	-10.1	-1.9	-3.6	3.8	-9.6	15.1	0.2	7.9	-2.6	-2.9	-3.4	3.6
Wellington	S2RGB	-7.0	-5.7	-5.7	-8.6	-3.1	-6.6	1.1	3.9	1.3	6.0	6.0	4.4	10.2
Nelson/Marlborough/Tasman	S2RHB	-5.3	-1.7	-6.5	-0.5	-6.6	-10.9	-1.3	-4.5	-2.8	-0.9	4.7	6.6	0.3
Canterbury	S2RIB	-6.8	-5.8	-6.2	-6.6	-4.2	-20.2	-3.9	-3.0	1.7	-1.6	2.6	2.1	-1.6
West Coast	S2RJB	0.2	1.1	-2.7	4.8	-1.0	-11.2	-0.7	-0.4	-0.3	0.8	-0.7	-1.3	-0.2
Otago	S2RKB	-2.0	2.0	-1.0	5.7	5.0	-2.2	-3.7	5.8	-3.1	3.9	3.5	-2.5	0.6
Southland	S2RLB	-4.2	-8.4	-11.6	-4.4	3.9	-6.3	-2.7	-3.8	-3.2	2.5	-5.1	1.7	-4.7
New Zealand	S2RZB	-5.7	-3.4	-3.5	-3.4	-1.6	-7.2	-3.8	2.6	1.5	2.8	3.4	1.6	3.1

(1) More detailed information is available from regional tourism organisations or Statistics New Zealand.

Table 3

Total Guest Nights

	Actual series		Seasonally adjusted series ⁽¹⁾⁽²⁾		Trend series ⁽¹⁾⁽³⁾		
	Guest nights (000)	Change from same month previous year (percent)	Guest nights (000)	Change from previous month (percent)	Guest nights (000)	Change from previous month (percent)	
<i>Series ref: ACS</i>	<i>S4A9Z03</i>		<i>S4S9Z03</i>		<i>S4T9Z03</i>		
Month							
2004	Jan	4,154	5.4	2,526 R	-1.7 R	2,535 R	0.5 R
	Feb	3,166	3.1	2,551 R	1.0 R	2,549 R	0.5 R
	Mar	3,050	3.4	2,537 R	-0.5 R	2,561 R	0.5 R
	Apr	2,690	4.1	2,577 R	1.6 R	2,573 R	0.4 R
	May	1,808	3.9	2,582 R	0.2 R	2,583 R	0.4 R
	Jun	1,707	14.7	2,623 R	1.6 R	2,592 R	0.3 R
	Jul	2,111	5.6	2,602 R	-0.8 R	2,599 R	0.3 R
	Aug	1,935	4.4	2,573 R	-1.1 R	2,605 R	0.2 R
	Sep	2,187	6.8	2,658 R	3.3 R	2,608 R	0.1 R
	Oct	2,314	2.7	2,554 R	-3.9 R	2,610 R	0.1 R
	Nov	2,652	5.5	2,626 R	2.8 R	2,612 R	0 R
	Dec	3,174	1.3	2,620 R	-0.2 R	2,612 R	0 R
2005	Jan	4,338	4.4	2,647 R	1.0 R	2,612 R	0 R
	Feb	3,212	1.5	2,578 R	-2.6 R	2,612 R	0 R
	Mar	3,389	11.1	2,813 R	9.1 R	2,612 R	0 R
	Apr	2,643	-1.7	2,528 R	-10.1 R	2,611 R	0 R
	May	1,808	0	2,581 R	2.1 R	2,610 R	-0.1 R
	Jun	1,829	7.1	2,804 R	8.6 R	2,607 R	-0.1 R
	Jul	2,169	2.7	2,676 R	-4.6 R	2,604 R	-0.1 R
	Aug	1,942	0.4	2,593 R	-3.1 R	2,602 R	-0.1 R
	Sep	2,129	-2.7	2,580 R	-0.5 R	2,600 R	-0.1 R
	Oct	2,362	2.1	2,606 R	1.0 R	2,599 R	0 R
	Nov	2,619	-1.3	2,585 R	-0.8 R	2,598 R	0 R
	Dec	3,070	-3.3	2,545 R	-1.5 R	2,598 R	0 R
2006	Jan	4,263	-1.7	2,602 R	2.2 R	2,599 R	0 R
	Feb	3,292	2.5	2,639 R	1.4 R	2,601 R	0.1 R
	Mar	3,162	-6.7	2,622 R	-0.6 R	2,606 R	0.2 R
	Apr	2,746	3.9	2,628 R	0.2 R	2,613 R	0.3 R
	May	1,836	1.5	2,624 R	-0.1 R	2,622 R	0.3 R
	Jun	1,702	-6.9	2,607 R	-0.7 R	2,632 R	0.4 R
	Jul	2,082	-4.0	2,567 R	-1.5 R	2,641 R	0.3 R
	Aug	2,002	3.1	2,676 R	4.3 R	2,650 R	0.3 R
	Sep	2,197	3.2	2,657 R	-0.7 R	2,659 R	0.3 R
	Oct	2,474	4.7	2,731 R	2.8 R	2,668 R	0.3 R
	Nov	2,740	4.6	2,704 R	-1.0 R	2,677 R	0.3 R
	Dec	3,210	4.6	2,667 R	-1.4 R	2,683 R	0.2 R
2007	Jan	4,364	2.4	2,659	-0.3	2,688	0.2

(1) All figures are subject to revision when the seasonal adjustment program is run each period.

(2) The seasonally adjusted series differs from the actual series in that the seasonal changes have been removed.

(3) The trend series differs from the actual series in that both the seasonal and irregular components have been removed.

Symbol:

R revised

Table 4

Seasonally Adjusted and Trend Guest Nights⁽¹⁾
By accommodation type

Accommodation type	Series ref: ACSM	Month												2007 Jan
		2006												
		Jan	Feb	Mar	Apr	May	Jun	Jul	Aug	Sep	Oct	Nov	Dec	
Seasonally adjusted guest nights (000)⁽²⁾														
Hotels/resorts	S4SAZ03	810 R	834 R	817 R	823 R	830 R	827 R	797 R	833 R	835 R	855 R	860 R	859 R	862
Motels/motor inns/apartments	S4SBZ03	894 R	889 R	890 R	885 R	889 R	878 R	867 R	907 R	892 R	913 R	906 R	899 R	899
Hosted accommodation ⁽³⁾	S4SCZ03	49 R	50 R	47 R	48 R	42 R	46 R	48 R	46 R	48 R	50 R	49 R	48 R	49
Backpackers/hostels	S4SDZ03	355 R	359 R	359 R	353 R	348 R	350 R	343 R	361 R	359 R	371 R	369 R	364 R	369
Caravan parks/camping grounds	S4SEZ03	506 R	508 R	498 R	512 R	525 R	488 R	514 R	528 R	526 R	546 R	521 R	511 R	509
Percentage change from previous month														
Hotels/resorts	S4SAZ03	1.2 R	2.9 R	-2.0 R	0.7 R	0.8 R	-0.4 R	-3.6 R	4.6 R	0.3 R	2.3 R	0.6 R	-0.1 R	0.4
Motels/motor inns/apartments	S4SBZ03	4.1 R	-0.6 R	0.1 R	-0.5 R	0.4 R	-1.3 R	-1.2 R	4.7 R	-1.7 R	2.4 R	-0.8 R	-0.9 R	0
Hosted accommodation ⁽³⁾	S4SCZ03	7.0 R	2.1 R	-6.1 R	1.1 R	-12.1 R	11.1 R	4.2 R	-5.3 R	3.9 R	5.6 R	-2.4 R	-2.1 R	1.6
Backpackers/hostels	S4SDZ03	0.3 R	1.2 R	-0.1 R	-1.7 R	-1.5 R	0.6 R	-1.9 R	5.1 R	-0.5 R	3.5 R	-0.7 R	-1.2 R	1.1
Caravan parks/camping grounds	S4SEZ03	2.5 R	0.5 R	-2.0 R	2.8 R	2.5 R	-6.9 R	5.2 R	2.9 R	-0.5 R	3.8 R	-4.6 R	-1.9 R	-0.4
Guest nights trend (000)⁽⁴⁾														
Hotels/resorts	S4TAZ03	815 R	815 R	817 R	819 R	822 R	826 R	830 R	834 R	839 R	844 R	850 R	855 R	859
Motels/motor inns/apartments	S4TBZ03	879 R	880 R	882 R	884 R	886 R	889 R	891 R	893 R	895 R	898 R	900 R	901 R	904
Hosted accommodation ⁽³⁾	S4TCZ03	47 R	47 R	47 R	48 R	48 R	48 R	48 R	48 R	48 R	48 R	48 R	48 R	49
Backpackers/hostels	S4TDZ03	354 R	356 R	355 R	353 R	351 R	350 R	352 R	356 R	360 R	364 R	367 R	369 R	370
Caravan parks/camping grounds	S4TEZ03	509 R	507 R	507 R	508 R	511 R	514 R	516 R	519 R	520 R	521 R	522 R	523 R	523
Percentage change from previous month														
Hotels/resorts	S4TAZ03	-0.1 R	0 R	0.2 R	0.3 R	0.4 R	0.5 R	0.5 R	0.5 R	0.6 R	0.6 R	0.6 R	0.6 R	0.5
Motels/motor inns/apartments	S4TBZ03	0.1 R	0.1 R	0.2 R	0.2 R	0.3 R	0.3 R	0.2 R	0.3 R	0.3 R	0.3 R	0.3 R	0.1 R	0.3
Hosted accommodation ⁽³⁾	S4TCZ03	0.6 R	0.5 R	0.4 R	0.2 R	0.2 R	0.1 R	0.1 R	0.2 R	0.3 R	0.4 R	0.3 R	0.2 R	0.4
Backpackers/hostels	S4TDZ03	1.1 R	0.6 R	-0.2 R	-0.7 R	-0.7 R	-0.2 R	0.5 R	1.1 R	1.3 R	1.1 R	0.8 R	0.5 R	0.3
Caravan parks/camping grounds	S4TEZ03	-0.5 R	-0.3 R	0 R	0.3 R	0.5 R	0.6 R	0.5 R	0.4 R	0.3 R	0.2 R	0.2 R	0 R	0.1

(1) All figures are subject to revision when the seasonal adjustment program is run each period.

(2) The seasonally adjusted series differs from the actual series in that the seasonal changes have been removed.

(3) Hosted accommodation includes private hotels, guest houses, bed and breakfasts, and farmstays.

(4) The trend series differs from the actual series in that both the seasonal and irregular components have been removed.

Symbol:

R revised

Table 5

North Island Guest Nights

		Actual series		Seasonally adjusted series ⁽¹⁾⁽²⁾		Trend series ⁽¹⁾⁽³⁾	
		Guest nights (000)	Change from same month previous year (percent)	Guest nights (000)	Change from previous month (percent)	Guest nights (000)	Change from previous month (percent)
<i>Series ref: ACS</i>		<i>S4A9R03</i>		<i>S4S9R03</i>		<i>S4T9R03</i>	
Month							
2004	Jan	2,426	5.9	1,487 R	0.2 R	1,479 R	0.4 R
	Feb	1,742	2.1	1,489 R	0.2 R	1,485 R	0.4 R
	Mar	1,711	3.1	1,479 R	-0.7 R	1,491 R	0.4 R
	Apr	1,541	2.0	1,497 R	1.3 R	1,496 R	0.4 R
	May	1,115	1.4	1,501 R	0.2 R	1,501 R	0.3 R
	Jun	1,087	13.0	1,509 R	0.6 R	1,505 R	0.3 R
	Jul	1,286	6.5	1,526 R	1.2 R	1,508 R	0.2 R
	Aug	1,140	3.0	1,498 R	-1.8 R	1,510 R	0.1 R
	Sep	1,281	4.0	1,524 R	1.7 R	1,511 R	0.1 R
	Oct	1,388	3.0	1,489 R	-2.3 R	1,513 R	0.1 R
	Nov	1,491	3.1	1,507 R	1.2 R	1,514 R	0.1 R
	Dec	1,807	2.1	1,526 R	1.3 R	1,516 R	0.1 R
2005	Jan	2,508	3.4	1,546 R	1.3 R	1,518 R	0.1 R
	Feb	1,749	0.4	1,491 R	-3.6 R	1,521 R	0.2 R
	Mar	1,890	10.5	1,629 R	9.3 R	1,523 R	0.2 R
	Apr	1,546	0.3	1,501 R	-7.8 R	1,525 R	0.1 R
	May	1,116	0.1	1,503 R	0.1 R	1,525 R	0 R
	Jun	1,126	3.5	1,559 R	3.7 R	1,523 R	-0.1 R
	Jul	1,336	3.9	1,582 R	1.5 R	1,521 R	-0.2 R
	Aug	1,145	0.4	1,504 R	-4.9 R	1,518 R	-0.2 R
	Sep	1,266	-1.2	1,500 R	-0.2 R	1,514 R	-0.3 R
	Oct	1,410	1.6	1,511 R	0.8 R	1,509 R	-0.3 R
	Nov	1,481	-0.7	1,495 R	-1.1 R	1,505 R	-0.3 R
	Dec	1,743	-3.5	1,480 R	-1.0 R	1,501 R	-0.2 R
2006	Jan	2,397	-4.4	1,481 R	0.1 R	1,499 R	-0.2 R
	Feb	1,788	2.2	1,523 R	2.9 R	1,499 R	0 R
	Mar	1,769	-6.4	1,522 R	-0.1 R	1,502 R	0.2 R
	Apr	1,555	0.6	1,512 R	-0.7 R	1,508 R	0.4 R
	May	1,117	0.1	1,508 R	-0.3 R	1,517 R	0.6 R
	Jun	1,087	-3.4	1,502 R	-0.4 R	1,526 R	0.6 R
	Jul	1,259	-5.7	1,487 R	-1.0 R	1,535 R	0.6 R
	Aug	1,195	4.4	1,570 R	5.6 R	1,544 R	0.6 R
	Sep	1,327	4.8	1,569 R	0 R	1,552 R	0.5 R
	Oct	1,489	5.6	1,596 R	1.7 R	1,560 R	0.5 R
	Nov	1,571	6.1	1,589 R	-0.5 R	1,567 R	0.5 R
	Dec	1,825	4.7	1,553 R	-2.2 R	1,574 R	0.4 R
2007	Jan	2,517	5.0	1,555	0.1	1,578	0.3

(1) All figures are subject to revision when the seasonal adjustment program is run each period.

(2) The seasonally adjusted series differs from the actual series in that the seasonal changes have been removed.

(3) The trend series differs from the actual series in that both the seasonal and irregular components have been removed.

Symbol:

R revised

Table 6

South Island Guest Nights

		Actual series		Seasonally adjusted series ⁽¹⁾⁽²⁾		Trend series ⁽¹⁾⁽³⁾	
		Guest nights (000)	Change from same month previous year (percent)	Guest nights (000)	Change from previous month (percent)	Guest nights (000)	Change from previous month (percent)
<i>Series ref: ACS</i>		<i>S4A9S03</i>		<i>S4S9S03</i>		<i>S4T9S03</i>	
Month							
2004	Jan	1,728	4.6	1,039 R	-4.2 R	1,056 R	0.8 R
	Feb	1,424	4.3	1,061 R	2.1 R	1,064 R	0.7 R
	Mar	1,339	3.9	1,058 R	-0.3 R	1,071 R	0.7 R
	Apr	1,150	7.0	1,073 R	1.4 R	1,078 R	0.6 R
	May	694	8.3	1,084 R	1.0 R	1,083 R	0.5 R
	Jun	620	17.8	1,121 R	3.4 R	1,088 R	0.5 R
	Jul	825	4.2	1,077 R	-3.9 R	1,092 R	0.4 R
	Aug	795	6.4	1,079 R	0.2 R	1,095 R	0.3 R
	Sep	906	10.9	1,135 R	5.1 R	1,098 R	0.2 R
	Oct	926	2.3	1,065 R	-6.2 R	1,099 R	0.1 R
	Nov	1,162	8.6	1,118 R	5.0 R	1,099 R	0 R
	Dec	1,367	0.4	1,094 R	-2.2 R	1,099 R	0 R
2005	Jan	1,830	5.9	1,102 R	0.7 R	1,098 R	-0.1 R
	Feb	1,463	2.7	1,086 R	-1.4 R	1,097 R	-0.1 R
	Mar	1,499	11.9	1,184 R	9.0 R	1,096 R	-0.1 R
	Apr	1,097	-4.6	1,020 R	-13.8 R	1,094 R	-0.1 R
	May	692	-0.2	1,080 R	5.8 R	1,093 R	-0.1 R
	Jun	703	13.4	1,265 R	17.1 R	1,092 R	-0.1 R
	Jul	834	1.0	1,095 R	-13.4 R	1,091 R	-0.1 R
	Aug	797	0.3	1,090 R	-0.4 R	1,090 R	0 R
	Sep	863	-4.8	1,081 R	-0.8 R	1,091 R	0.1 R
	Oct	952	2.8	1,096 R	1.4 R	1,092 R	0.1 R
	Nov	1,138	-2.0	1,090 R	-0.5 R	1,094 R	0.2 R
	Dec	1,327	-2.9	1,065 R	-2.3 R	1,096 R	0.2 R
2006	Jan	1,866	2.0	1,121 R	5.2 R	1,099 R	0.2 R
	Feb	1,504	2.8	1,115 R	-0.6 R	1,101 R	0.2 R
	Mar	1,393	-7.1	1,100 R	-1.3 R	1,103 R	0.2 R
	Apr	1,190	8.5	1,107 R	0.6 R	1,104 R	0.1 R
	May	718	3.8	1,121 R	1.3 R	1,105 R	0.1 R
	Jun	615	-12.5	1,103 R	-1.6 R	1,106 R	0.1 R
	Jul	823	-1.3	1,085 R	-1.7 R	1,107 R	0.1 R
	Aug	807	1.3	1,107 R	2.1 R	1,107 R	0.1 R
	Sep	870	0.8	1,088 R	-1.8 R	1,108 R	0.1 R
	Oct	985	3.4	1,135 R	4.3 R	1,109 R	0.1 R
	Nov	1,168	2.7	1,118 R	-1.5 R	1,111 R	0.1 R
	Dec	1,385	4.4	1,115 R	-0.3 R	1,111 R	0 R
2007	Jan	1,846	-1.1	1,107	-0.7	1,112	0.2

(1) All figures are subject to revision when the seasonal adjustment program is run each period.

(2) The seasonally adjusted series differs from the actual series in that the seasonal changes have been removed.

(3) The trend series differs from the actual series in that both the seasonal and irregular components have been removed.

Symbol:

R revised