

Embargoed until 10:45am – 12 March 2008

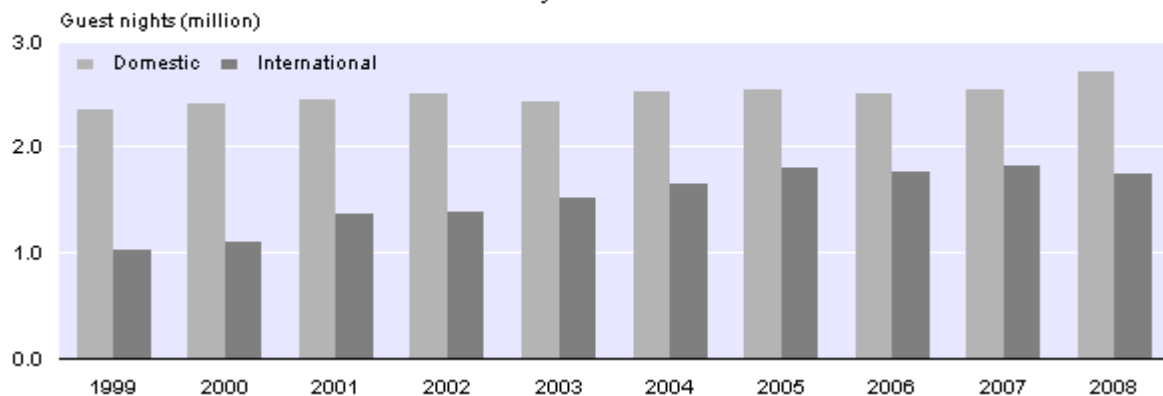
## Accommodation Survey: January 2008

### Highlights

In January 2008 compared with January 2007:

- Domestic guest nights increased 6 percent, to 2.7 million guest nights.
- International guest nights decreased 4 percent, to 1.7 million guest nights.
- Total guest nights increased 2 percent to a record 4.5 million.
- Seven of the 12 regions recorded higher guest nights, led by Canterbury, Auckland and the Bay of Plenty.
- Guest nights for five of the 12 regions were the highest on record, led by Canterbury, Auckland and Otago.
- Caravan parks/camping grounds showed the largest increase of the five accommodation types.

**Domestic and International Guest Nights**  
*January 1999–2008*



Geoff Bascand  
Government Statistician

12 March 2008  
ISSN 1178-0207

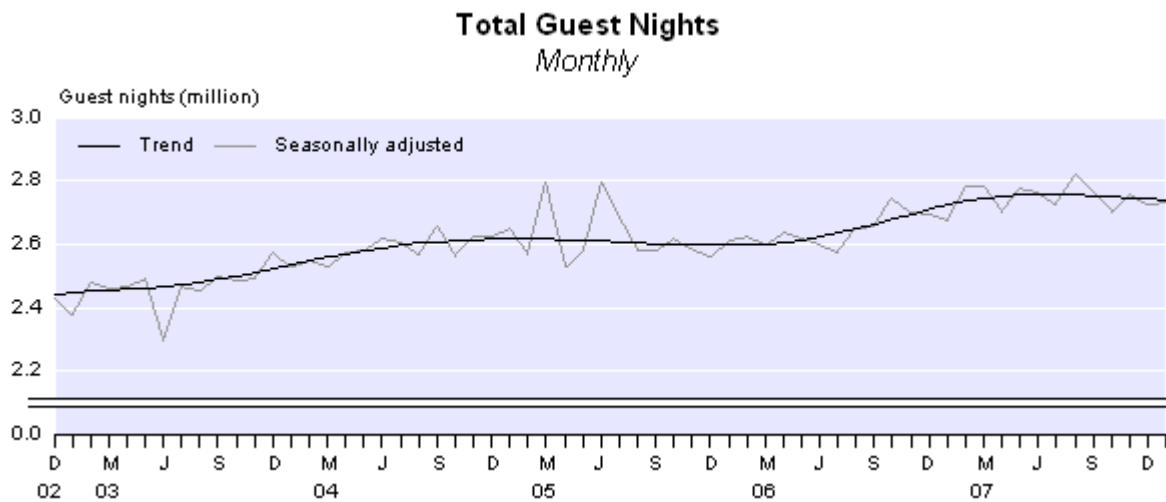
There is a companion Media Release published – [Accommodation Survey: January 2008](#).

# Commentary

## Total guest nights

Total guest nights in short-term commercial accommodation were 4.5 million in January 2008, an increase of 2 percent compared with January 2007 and 5 percent compared with January 2006. This is the highest monthly guest nights figure recorded since the survey began in July 1996. January is traditionally the peak month for commercial accommodation.

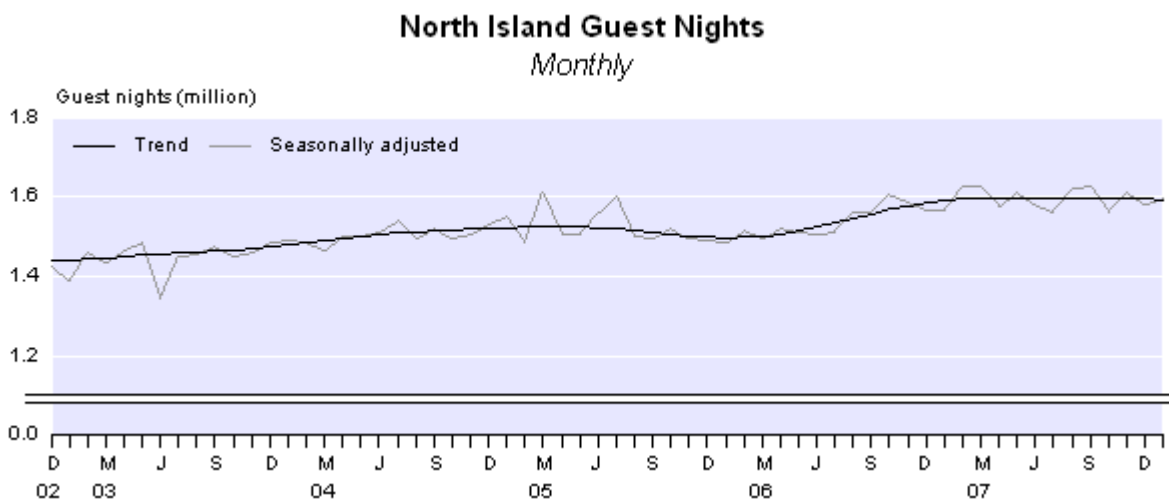
The trend for total guest nights flattened during 2007. In January 2008, the trend level was the same as in January 2007 and 5 percent higher than in January 2006. An apparent change in the direction of the trend since July 2007 should be treated with caution, as time series analysis suggests more data is required for the direction of the trend to be confirmed.



## Guest nights by island

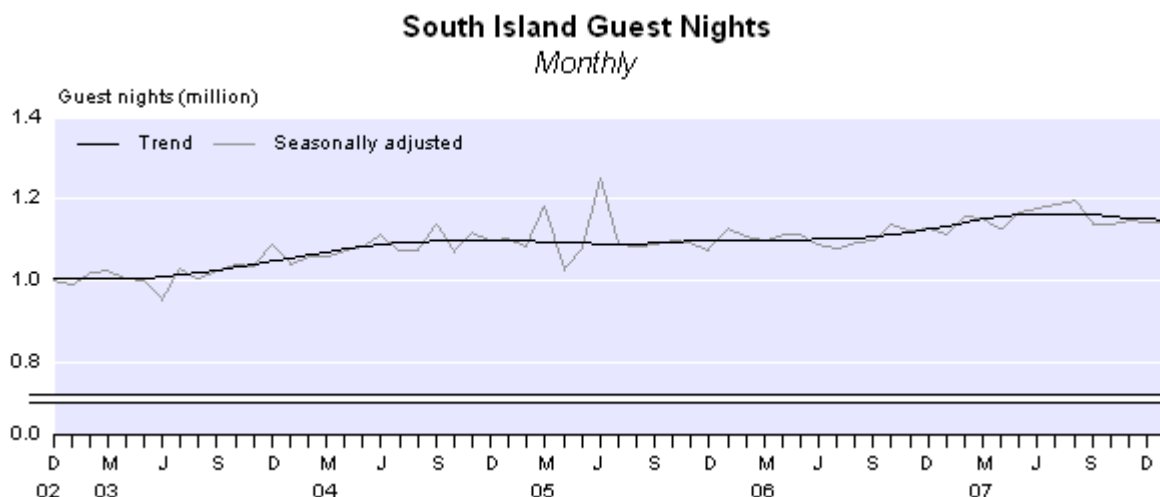
Guest nights in the North Island were 2.6 million in January 2008, a 2 percent increase compared with January 2007 and a 7 percent increase compared with January 2006. This is the highest guest nights figure on record for the North Island.

The trend for North Island guest nights flattened during 2007. In January 2008, the trend level was the same as in January 2007 and 6 percent higher than in January 2006.



Guest nights in the South Island were 1.9 million in January 2008, the highest figure on record. Guest nights increased 3 percent compared with January 2007 and increased 2 percent compared with January 2006.

The trend for South Island guest nights flattened for most of 2007. In January 2008, the trend level was 1 percent higher than in January 2007 and 4 percent higher than in January 2006. An apparent change in the direction of the trend since July 2007 should be treated with caution, as time series analysis suggests more data is required for the direction of the trend to be confirmed.



## Guest nights by region

In January 2008, seven of the 12 regions recorded higher guest nights than in January 2007. The Canterbury region (up 44,000 or 7 percent) had the largest increase in guest nights, followed by Auckland (up 32,000 or 6 percent) and the Bay of Plenty (up 22,000 or 4 percent). The Hawke's Bay/Gisborne region recorded the largest decrease in guest nights (down 16,000 or 7 percent).

Guest nights for five of the 12 regions were the highest on record:

- Canterbury (661,000)
- Auckland (595,000)
- Otago (563,000)
- Nelson/Marlborough/Tasman (385,000)
- Taranaki/Manawatu-Wanganui (198,000).

## Comparison with short-term overseas visitor arrival statistics

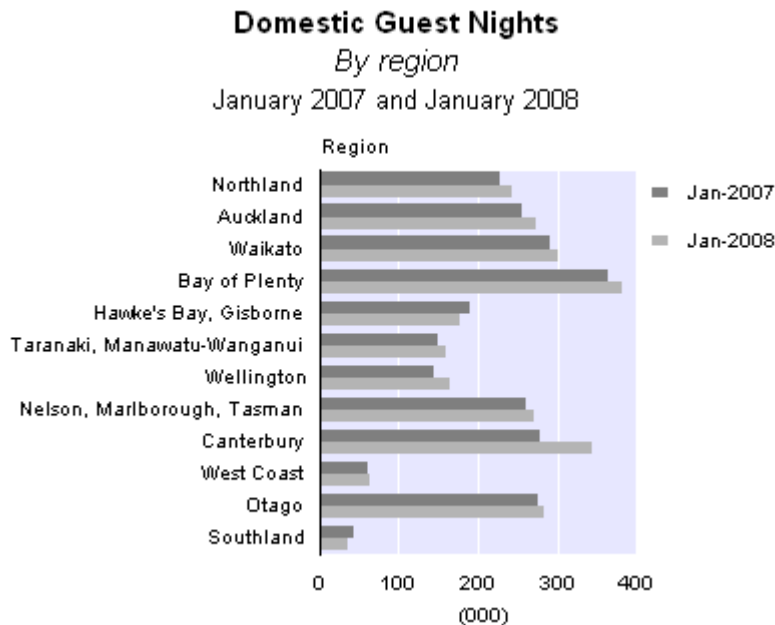
The *External Migration: January 2008* release shows that short-term overseas visitor arrivals to New Zealand in January 2008 were up 6,800 (3 percent) from January 2007. This followed a decrease of 1,800 (1 percent) in December 2007 compared with December 2006.

The estimated average number of visitors who were in New Zealand during January 2008 was up less than 1 percent from January 2007.

New Zealand resident short-term departures for January 2008 were up 2,200 (2 percent) from January 2007. This followed an increase of 9,200 (5 percent) in December 2007 compared with December 2006.

## Origin of guests

New Zealanders accounted for 2.7 million guest nights in January 2008, a 6 percent increase compared with January 2007. The Canterbury region had the biggest increase (up 66,000 or 24 percent), after recording decreases in domestic guest nights in January 2007 and January 2006. The Wellington region also had a large increase in domestic guest nights in January 2008 (up 20,000 or 14 percent), followed by the Bay of Plenty (up 20,000 or 6 percent).



International visitors accounted for 1.7 million guest nights in January 2008, a 4 percent decrease compared with January 2007. The Canterbury region had the largest decrease in international guest nights, (down 22,000 or 6 percent), followed by Northland, (down 21,000 or 16 percent).

In January 2008, international visitors made up 39 percent of the total guest nights, compared with a 42 percent share in January 2007. In the North Island, international visitors contributed 33 percent, whereas in the South Island, the proportion was 48 percent.



## Survey change

From the November 2007 survey month, information on domestic and international guest nights is available on a monthly basis. Previous information on 'origin of guest breakdown by country' is no longer available. This is the first stage of changes being made following a review of the Accommodation Survey, which aims to balance the need for high-quality information against the need to reduce respondent load.

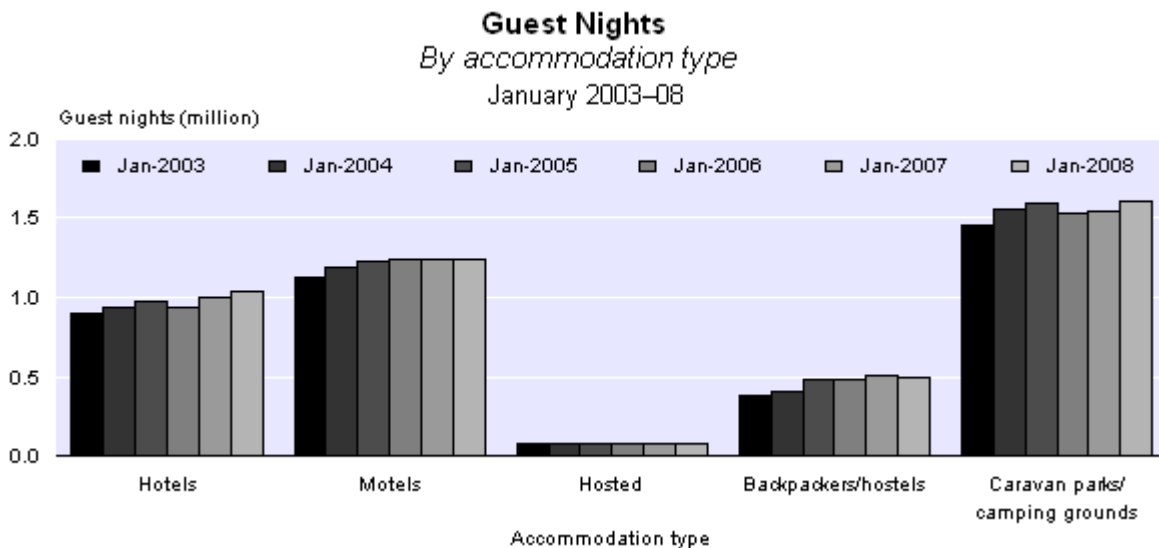
In January 2008, there was a response rate of 67 percent to the Accommodation Survey question on 'origin of guests'. Previously, the response rate for this question ranged between 55 and 60 percent. Figures for those establishments that failed to respond have been imputed (see Non-response imputation). Such high levels of imputation can affect data quality, especially for regional statistics and/or statistics by accommodation type.

## Guest nights by accommodation type

In January 2008, caravan parks/camping grounds and hotels were the only accommodation types to show increases in guest nights compared with January 2007. Caravan parks/camping grounds increased 73,000 or 5 percent, followed by hotels, up 40,000 or 4 percent. The largest decrease was for backpackers/hostels, down 15,000 or 3 percent.

In January 2008, the guest nights total for caravan parks/camping grounds was at its highest for any month on record.

Caravan parks/camping grounds had the largest share of total guest nights (36 percent) in January 2008, followed by motels (28 percent) and hotels (23 percent).



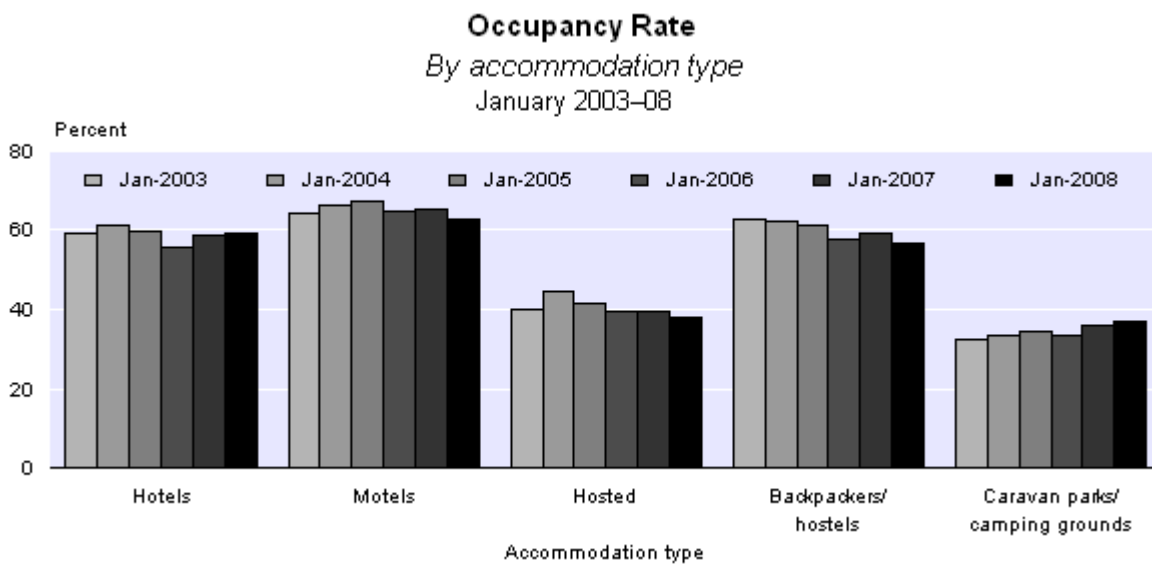
## Occupancy rate

In January 2008, the occupancy rate, excluding caravan parks/camping grounds, was 59 percent compared with 60 percent in January 2007.

Accommodation capacity, excluding caravan parks/camping grounds, was 3 percent above the January 2007 level.

Motels had the highest occupancy rate (63 percent) of all the accommodation types in January 2008, followed by hotels (59 percent) and backpackers/hostels (56 percent).

Excluding the caravan parks/camping grounds category, the Nelson/Marlborough/Tasman region had the highest occupancy rate (66 percent) in January 2008, followed by Otago (64 percent) and Auckland (63 percent).



## Non-response imputation

When respondents do not answer questions in the Accommodation Survey, Statistics New Zealand estimates the missing information based on data from similar establishments in the same and/or similar areas. For more information, please refer to the Technical notes of this release or contact Statistics NZ.

## Response rates by accommodation type for January 2008

Accommodation type	Percentage of establishments responding to questions on guest nights, guest arrivals and stay unit nights	Percentage of the guest night estimate from establishments that responded to the question on guest nights	Percentage of the origin of guest estimate from establishments that responded to the questions on the origin of guests
Hotels	79	86	64
Motels	78	80	64
Hosted	83	83	71
Backpackers/hostels	77	78	55
Caravan parks/ camping grounds	83	89	73
<b>Total</b>	<b>79</b>	<b>85</b>	<b>67</b>

## Survey sponsorship

The Accommodation Survey is a monthly survey undertaken by Statistics NZ and sponsored by the Ministry of Tourism.

For technical information contact:  
Brylee Wayman or Tehseen Islam  
Christchurch 03 964 8700

**Email:** [info@stats.govt.nz](mailto:info@stats.govt.nz)

## **Technical notes**

### **Population**

The target population for this survey is all 'geographic units' (called 'establishments' in this publication) that are classified as short-term (less than one month) commercial accommodation providers operating in New Zealand. In terms of the Australian and New Zealand Standard Industrial Classification (ANZSIC), the target population is taken from class 5710 (accommodation), and the part of class 5720 (pubs, taverns and bars) that also provides accommodation.

The survey frame is all short-term commercial accommodation-providing geographic units belonging to an economically significant 'enterprise'. Economic significance is generally determined as being GST registered and having a turnover of at least \$30,000 per annum.

### **Survey errors**

This survey aims for 100 percent coverage of the population (a full census). In practice, however, an overall response rate of between 76 and 80 percent is usually achieved. The remaining units are given imputed values based upon the characteristics of similar establishments in the same or similar regions. Imputation introduces unknown errors into the estimates, and users of the data should bear this in mind. The size of these unknown errors is difficult to quantify.

Other errors occur for reasons such as respondent error, frame quality and errors in processing. While every effort is made to minimise these errors, they will still occur. It is not possible to quantify their effect.

### **Trend estimates**

For any series, the survey estimates can be broken down into three components: trend, seasonal and irregular. While seasonally adjusted series have had the seasonal component removed, the trend series have had both the seasonal and the irregular components removed. Trend estimates reveal the underlying direction of movement in a series, and are likely to indicate turning points more accurately than seasonally adjusted estimates.

The accommodation trend series are calculated using the X-12-ARIMA seasonal adjustment package. They are based on optimal moving averages of the seasonally adjusted series, with an adjustment for outlying values. The X-12-ARIMA package is an updated version of X-11-ARIMA, developed by the U.S. Census Bureau.

The trend estimates towards the end of the series incorporate new data as it becomes available, and can therefore change as more observations are added to the series. Revisions can be particularly large if an observation is treated as an outlier in one month, but is found to be part of the underlying trend as further observations are added to the series. All trend estimates are subject to revisions each month, but normally only the last two or three estimates are likely to be substantially altered.

### **Trend estimates versus month-on-month comparisons**

Trend estimates reveal the underlying direction of the movement in a series. In contrast, comparisons between one month and the same month in the previous year(s) do not take account of data recorded in between these periods, and are subject to one-off fluctuations. Reasons for fluctuations include changes in the timing of holidays, international crises, and large sporting and cultural events.

## Seasonally adjusted estimates

The X-12-ARIMA package has been used to produce the seasonally adjusted estimates referred to in the Commentary text. Seasonal adjustment aims to eliminate the impact of regular seasonal events. These may be due to climatic effects (such as more guests staying in camping grounds during the summer) or calendar effects (such as holidays). This makes the data for adjacent months more comparable. All seasonally adjusted figures are subject to revision each month.

Further information about seasonal adjustment is available on the Statistics New Zealand website.

## Classification of accommodation type

The predominant capacity provided determines the accommodation type. For instance, if a business provides both motel and camping ground accommodation, but the majority of its stay units are motel rooms, then it would be classified as a motel. The classification system used is the New Zealand Accommodation Classification, broadly defined below:

- Hotels: includes both hotels and resorts
- Motels: includes motor inns, apartments and motels
- Hosted: includes private hotels, guest houses, bed and breakfasts, and holiday farm (farmstay) accommodation
- Backpackers/hostels
- Caravan parks/camping grounds.

Further information on the classification system is available on request.

## Origin of guests

From November 2007, information on total domestic and international guest nights will be available on a monthly basis but the breakdown by region or country will no longer be available.

## **Other definitions**

### **Business frame**

A register (maintained by Statistics NZ) of all economically significant businesses operating in New Zealand from which the survey population is drawn.

### **Establishment**

The smallest statistical unit operating within a single physical location and owned by a single enterprise. The term is used to represent what is usually called the 'geographic unit' in other Statistics NZ publications.

### **Guest night**

A guest night is equivalent to one guest spending one night at an establishment. For example, a motel with 15 guests spending two nights would report provision of 30 guest nights of accommodation.

### **Stay unit**

The term used to describe the unit of accommodation that is available to be charged out to guests (for example a powered site in a caravan park, a bed in a backpackers, a room in a hotel or motel).

### **Capacity (stay unit nights available)**

This is the basic measure of an establishment's accommodation capacity. It is defined as one stay unit multiplied by one night. For example, 10 units in a motel available for guest use (whether occupied or not) for the full 31 days in July would have an accommodation capacity of 310 stay unit nights.

### **Occupancy rate**

This derived variable is calculated by dividing stay unit nights occupied by stay unit nights available. In the case of the motel above, if six of its 10 units were occupied every night in July, it would have  $6 \times 31 = 186$  stay unit nights occupied, and its occupancy rate would be 60 percent.

### **Average length of stay**

This derived variable is calculated by dividing total guest nights by total guest first nights.

## **More information**

For more information, follow the [link](#) from the Technical notes of this release on the Statistics NZ website.

## **Confidentiality**

Data collected and information contained in this publication must conform to the provisions of the Statistics Act 1975. This requires that published information maintains the confidentiality of individual respondents.

## **Copyright**

Information obtained from Statistics NZ may be freely used, reproduced, or quoted unless otherwise specified. In all cases Statistics NZ must be acknowledged as the source.

## **Liability**

While care has been used in processing, analysing and extracting information, Statistics NZ gives no warranty that the information supplied is free from error. Statistics NZ shall not be liable for any loss suffered through the use, directly or indirectly, of any information, product or service.

## **Timing**

Timed statistical releases are delivered using postal and electronic services provided by third parties. Delivery of these releases may be delayed by circumstances outside the control of Statistics NZ. Statistics NZ accepts no responsibility for any such delays.

### **Next release ...**

*Accommodation Survey: February 2008* will be released on 11 April 2008.

Statistics New Zealand: The first source of independent information for your key decisions.

## Tables

The following tables can be downloaded from the Statistics New Zealand website in Excel format. If you do not have access to Excel, you may use the [Excel file viewer](#) to view, print and export the contents of the file.

### List of tables

1. Establishments, capacity, guest nights, occupancy rate and average stay, by accommodation type
2. Occupancy rate excluding caravan parks/camping grounds, by region
3. Total guest nights
4. Seasonally adjusted and trend guest nights, by accommodation type
5. North Island guest nights
6. South Island guest nights
7. Regional guest nights

### Accommodation pivot tables

The Accommodation pivot tables provide more detailed information, breaking the survey variables down by regional tourism organisation areas and territorial authority areas.

- **Regional Tourism Organisation (RTO) Area by Accommodation Type (Type)**  
Contains number of establishments, capacity, occupancy rates, guest nights, guest arrivals, length of stay and some ratios of these variables.

The graph on the first worksheet will change to display the RTO and Type you select on the second worksheet. When printing the graph, select a cell rather than the graph so the heading will print.

- **Total Accommodation by Territorial Authority (TA)**  
Contains number of establishments, capacity, occupancy rates, guest nights, guest arrivals, length of stay and some ratios of these variables.
- **Origin of Guests and Employment Information by Regional Tourism Organisation (RTO)**  
Contains domestic and international guest night variables and employees.

### Printing a selection of data in a spreadsheet

If you only want to print out some of the information in a spreadsheet, either select the pages you want in the print box, or hide the data you don't want to print by highlighting the columns or rows of data you don't want, then right click the mouse and select 'Hide'.

Accommodation Survey: January 2008

Table 1

**Establishments, Capacity, Guest Nights, Occupancy Rate and Average Stay<sup>(1)(2)(3)(5)</sup>**  
*By accommodation type*

Accommodation type	Series ref: ACSM	Month												
		2007												2008
		Jan	Feb	Mar	Apr	May	Jun	Jul	Aug	Sep	Oct	Nov	Dec	Jan
<b>Hotels/resorts</b>														
Number of establishments	S1AA	569	566	568	569	572	568	571	572	574	572	579	579	575
Capacity (000)	S1AB	972	875	979	950	968	937	978	984	946	984	960	992	994
Guest nights (000)	S1AC	1,002	1,041	1,061	852	682	629	780	769	785	845	997	874	1,042
Occupancy rate (percent)	S1AD	58.8	72.3	67.3	53.1	47.5	44.1	48.3	49.3	50.4	53.4	65.2	50.8	59.2
Average stay (nights)	S1AE	1.9	1.8	1.8	1.8	1.8	1.8	2.0	1.9	1.9	1.8	1.8	1.8	1.8
<b>Motels/motor inns/apartments</b>														
Number of establishments	S1BA	1,760	1,769	1,769	1,769	1,767	1,755	1,756	1,774	1,777	1,791	1,801	1,810	1,810
Capacity (000)	S1BB	840	766	850	827	856	826	859	862	835	866	841	870	872
Guest nights (000)	S1BC	1,242	1,126	1,143	954	682	671	821	791	835	863	922	969	1,241
Occupancy rate (percent)	S1BD	65.0	72.2	68.1	55.2	44.4	42.4	46.5	47.0	49.6	51.2	57.8	51.6	62.6
Average stay (nights)	S1BE	1.9	1.8	1.8	1.8	1.8	1.8	1.9	2.0	1.9	1.8	1.8	1.8	1.9
<b>Hosted accommodation<sup>(4)</sup></b>														
Number of establishments	S1CA	674	680	679	669	615	583	561	579	620	663	695	711	704
Capacity (000)	S1CB	105	95	104	99	96	89	90	92	95	104	103	109	108
Guest nights (000)	S1CC	82	89	74	46	23	21	28	29	30	38	55	65	81
Occupancy rate (percent)	S1CD	39.6	48.5	37.9	24.2	14.2	12.9	16.1	17.2	17.2	20.8	29.4	30.1	37.9
Average stay (nights)	S1CE	1.8	1.8	1.8	1.8	1.9	2.0	2.2	2.3	2.0	1.8	1.8	1.8	1.8
<b>Backpackers/hostels</b>														
Number of establishments	S1DA	442	443	445	441	430	414	411	412	426	445	446	451	448
Capacity (000)	S1DB	760	695	774	750	760	723	747	758	744	781	748	792	788
Guest nights (000)	S1DC	504	483	496	410	294	279	322	301	307	314	391	436	489
Occupancy rate (percent)	S1DD	59.0	60.9	57.3	49.1	35.5	35.2	38.6	35.5	37.3	35.7	47.0	48.5	56.5
Average stay (nights)	S1DE	1.8	1.9	1.9	1.9	2.0	2.0	2.2	2.1	2.1	2.0	2.0	1.9	1.9
<b>Total excluding caravan parks/camping grounds</b>														
Number of establishments	S1XA	3,445	3,458	3,461	3,448	3,384	3,320	3,299	3,337	3,397	3,471	3,521	3,551	3,537
Capacity (000)	S1XB	2,677	2,431	2,708	2,625	2,681	2,575	2,674	2,696	2,620	2,736	2,652	2,763	2,762
Guest nights (000)	S1XC	2,830	2,737	2,773	2,262	1,681	1,600	1,951	1,889	1,957	2,060	2,365	2,344	2,853
Occupancy rate (percent)	S1XD	60.0	68.1	63.5	51.5	41.9	40.0	43.9	43.6	45.2	46.4	56.3	49.6	58.7
Average stay (nights)	S1XE	1.9	1.8	1.8	1.8	1.8	1.9	2.0	2.0	1.9	1.8	1.8	1.8	1.9
<b>Caravan parks/camping grounds</b>														
Number of establishments	S1EA	418	418	416	412	396	393	387	386	393	407	416	419	418
Capacity (000)	S1EB	1,622	1,456	1,605	1,544	1,457	1,405	1,442	1,451	1,430	1,593	1,568	1,629	1,637
Guest nights (000)	S1EC	1,534	755	626	552	261	210	254	242	329	379	429	894	1,607
Occupancy rate (percent)	S1ED	35.8	23.8	18.2	15.6	9.3	7.4	8.1	8.0	10.6	11.0	13.1	23.5	36.7
Average stay (nights)	S1EE	2.9	1.9	1.8	1.9	1.8	1.9	2.0	1.9	1.8	1.8	1.7	2.1	2.6
<b>Total</b>														
Number of establishments	S19A	3,863	3,876	3,877	3,860	3,780	3,713	3,686	3,723	3,790	3,878	3,937	3,970	3,955
Capacity (000)	S19B	4,299	3,886	4,314	4,169	4,138	3,980	4,116	4,148	4,050	4,329	4,220	4,391	4,400
Guest nights (000)	S19C	4,364	3,493	3,399	2,814	1,942	1,809	2,205	2,131	2,286	2,439	2,795	3,239	4,461
Occupancy rate (percent)	S19D	50.9	51.5	46.7	38.2	30.4	28.5	31.4	31.1	33.0	33.4	40.3	39.9	50.5
Average stay (nights)	S19E	2.1	1.8	1.8	1.8	1.8	1.9	2.0	2.0	1.9	1.8	1.8	1.9	2.1

For footnotes, see end of table.

**Accommodation Survey: January 2008**

Table 1  
continued

**Establishments, Capacity, Guest Nights, Occupancy Rate and Average Stay<sup>(1)(2)(3)(5)</sup>**  
*By accommodation type*

Accommodation type	Series ref: ACSM	Month												
		2007												2008
		Jan	Feb	Mar	Apr	May	Jun	Jul	Aug	Sep	Oct	Nov	Dec	Jan
<b>Percentage change from the same month of the previous year</b>														
<b>Hotels/resorts</b>														
Number of establishments	S1AA	-1.2	-1.9	-1.0	-0.7	-0.2	-0.2	0.9	1.1	1.4	0.7	1.8	1.6	1.1
Capacity	S1AB	2.0	1.4	2.6	2.4	1.4	3.2	4.1	4.8	2.5	2.1	2.6	2.6	2.3
Guest nights	S1AC	6.6	3.4	7.3	2.5	2.1	4.3	7.4	5.0	2.4	-0.8	2.1	-1.3	4.0
Occupancy rate	S1AD	6.2	1.4	3.8	-1.0	0.5	-1.0	0.9	-1.9	-4.0	-4.0	-1.0	-3.9	0.6
Average stay (nights)	S1AE	5.9	2.2	5.2	1.8	1.4	-2.1	1.2	0.5	-1.1	1.2	5.0	1.4	-0.6
<b>Motels/motor inns/apartments</b>														
Number of establishments	S1BA	2.6	3.2	3.0	3.1	3.6	3.1	3.1	3.4	2.6	2.6	3.0	3.0	2.8
Capacity	S1BB	1.9	4.2	4.3	4.8	5.2	5.0	5.5	5.0	4.4	3.8	4.0	3.7	3.8
Guest nights	S1BC	0.7	5.5	5.9	-0.1	7.1	5.0	3.0	6.6	2.6	-1.4	2.2	-0.3	0
Occupancy rate	S1BD	0.6	1.1	1.4	-3.0	1.6	-1.1	-2.6	0.5	-1.8	-3.0	-1.9	-3.2	-3.7
Average stay (nights)	S1BE	0.9	1.4	0.1	0.5	1.3	-0.3	2.0	0.6	1.7	0.1	0.2	3.0	1.1
<b>Hosted accommodation<sup>(4)</sup></b>														
Number of establishments	S1CA	1.0	2.9	3.0	2.5	2.8	1.4	1.6	2.3	4.4	5.6	5.6	7.2	4.5
Capacity	S1CB	-0.1	0.7	-0.5	-1.3	-0.9	-1.7	-1.9	-2.2	2.3	2.7	3.0	4.3	3.1
Guest nights	S1CC	-0.3	5.2	7.8	-4.7	5.0	-0.5	-12.6	-0.6	-5.6	-8.5	0.6	2.8	-0.8
Occupancy rate	S1CD	0.3	3.0	8.9	-4.2	9.1	-4.4	-10.5	2.7	-6.1	-9.2	-3.5	-4.1	-4.3
Average stay (nights)	S1CE	-1.1	-0.5	2.8	-1.3	-0.3	1.1	-3.4	0.1	-0.7	1.5	2.7	-1.5	0.3
<b>Backpackers/hostels</b>														
Number of establishments	S1DA	1.1	0.7	0.9	0.9	0.2	0.2	1.5	1.0	1.7	2.1	1.8	1.8	1.4
Capacity	S1DB	2.1	1.7	1.6	2.2	1.3	1.0	1.6	2.8	3.2	2.5	1.6	4.2	3.7
Guest nights	S1DC	4.3	5.4	6.7	6.9	6.6	11.2	12.1	8.8	10.3	-1.6	0.2	2.1	-2.9
Occupancy rate	S1DD	2.7	3.2	4.3	2.7	5.9	9.7	7.5	2.7	6.8	-4.9	-1.6	-2.7	-4.2
Average stay (nights)	S1DE	0.1	3.2	3.9	2.4	-3.3	1.1	10.9	-0.2	2.8	3.7	2.2	1.7	1.2
<b>Total excluding caravan parks/camping grounds</b>														
Number of establishments	S1XA	1.5	1.9	2.1	2.1	2.4	1.8	2.3	2.5	2.6	2.8	3.2	3.4	2.7
Capacity	S1XB	1.9	2.3	2.7	2.9	2.5	2.9	3.6	4.1	3.3	2.8	2.8	3.5	3.2
Guest nights	S1XC	3.4	4.7	6.6	2.0	4.9	5.7	5.9	6.2	3.5	-1.3	1.8	-0.2	0.8
Occupancy rate	S1XD	3.1	1.8	3.4	-0.6	2.4	1.6	1.3	0.3	-0.9	-3.9	-1.5	-3.4	-2.3
Average stay (nights)	S1XE	2.4	2.0	2.7	1.3	0.6	-0.7	3.0	0.4	0.7	1.0	2.6	2.1	0.4
<b>Caravan parks/camping grounds</b>														
Number of establishments	S1EA	-0.5	-0.7	-0.7	-1.7	-2.0	-1.8	-2.0	-2.0	-1.5	-0.5	1.2	0	0
Capacity	S1EB	-3.6	-4.4	-3.7	-4.0	-4.2	-2.8	-2.6	-1.9	-0.7	0	1.8	0.4	0.9
Guest nights	S1EC	0.6	11.7	11.5	4.7	11.6	11.1	6.0	8.8	7.3	-2.0	3.3	3.7	4.8
Occupancy rate	S1ED	7.2	17.4	13.8	7.0	17.3	12.0	4.0	6.9	9.0	-3.4	-1.4	7.7	2.6
Average stay (nights)	S1EE	-0.8	1.7	4.3	0.6	5.3	0.4	3.9	3.4	0.7	2.9	1.3	-2.5	-10.8
<b>Total</b>														
Number of establishments	S19A	1.3	1.7	1.8	1.7	1.9	1.4	1.8	2.0	2.2	2.4	3.0	3.1	2.4
Capacity	S19B	-0.2	-0.3	0.2	0.2	0	0.8	1.4	1.9	1.9	1.7	2.4	2.3	2.4
Guest nights	S19C	2.4	6.1	7.5	2.5	5.8	6.3	5.9	6.4	4.1	-1.4	2.0	0.9	2.2
Occupancy rate	S19D	4.9	5.8	6.4	2.1	5.7	4.1	3.3	2.5	1.2	-3.2	-1.2	-0.7	-0.8
Average stay (nights)	S19E	1.3	2.0	3.0	1.2	1.2	-0.6	3.1	0.7	0.7	1.4	2.4	1.1	-2.4

- (1) Establishments that are temporarily closed for more than 14 days during a month are excluded from the results.
- (2) Establishments primarily offering accommodation for periods of one month or more are excluded from the survey.
- (3) Monthly capacity shows the number of stay units available and is affected by the number of days in a month.
- (4) Hosted accommodation includes private hotels, guest houses, bed and breakfasts, and farmstays.
- (5) Percentage changes are calculated on unrounded figures.

Table 2

**Occupancy Rate Excluding Caravan Parks/Camping Grounds<sup>(1)</sup>**  
By region

Region	Series ref: ACSM	Month												
		2007												2008
		Jan	Feb	Mar	Apr	May	Jun	Jul	Aug	Sep	Oct	Nov	Dec	Jan
<b>Occupancy rate (percent)</b>														
Northland	S2RAB	63.0	64.8	57.3	44.3	33.9	29.4	30.6	28.1	32.4	39.4	44.6	46.1	58.4
Auckland	S2RBB	62.1	71.2	71.4	56.8	52.1	52.8	52.2	53.8	54.8	56.6	69.5	53.9	62.9
Waikato	S2RCB	56.4	58.0	56.5	46.1	36.7	36.0	38.5	36.3	41.0	40.3	46.3	42.0	52.4
Bay of Plenty	S2RDB	63.6	66.3	63.5	55.8	46.2	41.1	45.4	38.9	48.0	50.5	56.0	51.1	60.3
Hawke's Bay/Gisborne	S2REB	64.0	64.6	63.5	48.6	38.9	37.9	37.7	37.3	40.5	46.4	47.3	49.2	59.0
Taranaki/Manawatu-Wanganui	S2RFB	42.4	51.7	48.9	39.4	35.6	33.2	39.6	43.3	43.7	36.2	40.0	33.4	38.4
Wellington	S2RGB	57.8	74.8	69.0	56.8	50.7	48.9	46.2	48.2	54.5	52.7	66.0	53.0	58.4
Nelson/Marlborough/Tasman	S2RHB	67.3	72.4	62.1	47.7	34.0	31.7	30.9	31.7	32.6	36.4	49.1	51.3	65.8
Canterbury	S2RIB	58.6	69.9	62.2	51.6	40.4	37.9	43.1	41.3	43.5	47.9	58.3	51.0	59.3
West Coast	S2RJB	58.6	67.1	57.3	45.3	28.5	24.6	26.6	25.4	28.4	36.0	47.6	45.7	57.5
Otago	S2RKB	65.7	73.9	68.3	57.6	41.6	40.6	61.2	61.1	51.3	46.6	58.9	54.4	63.7
Southland	S2RLB	56.4	68.6	61.4	43.8	31.5	24.4	24.5	25.6	28.3	33.9	50.5	47.6	55.8
<b>New Zealand</b>	<b>S2RZB</b>	<b>60.0</b>	<b>68.1</b>	<b>63.5</b>	<b>51.5</b>	<b>41.9</b>	<b>40.0</b>	<b>43.9</b>	<b>43.6</b>	<b>45.2</b>	<b>46.4</b>	<b>56.3</b>	<b>49.6</b>	<b>58.7</b>
<b>Percentage change from the same month of the previous year</b>														
Northland	S2RAB	2.3	2.4	4.3	-6.5	2.6	1.6	-1.7	-4.0	-4.6	-8.3	-10.0	-2.7	-7.3
Auckland	S2RBB	7.7	2.0	5.9	1.9	3.0	5.2	7.3	1.7	-0.1	-3.7	3.5	-4.6	1.3
Waikato	S2RCB	6.1	3.1	1.6	-0.8	7.9	-1.6	3.3	5.3	6.3	0.2	-8.2	-9.9	-7.0
Bay of Plenty	S2RDB	1.7	-3.4	3.7	0.4	4.4	-5.8	-0.6	-13.5	-0.4	-7.1	-6.7	-8.3	-5.2
Hawke's Bay/Gisborne	S2REB	8.7	1.1	1.4	-1.7	4.3	0	3.5	-3.2	-1.0	-1.8	-7.5	-0.7	-7.8
Taranaki/Manawatu-Wanganui	S2RFB	3.6	11.3	6.0	0.8	1.6	-2.2	-11.9	0.1	-8.8	-9.8	-1.2	-3.5	-9.4
Wellington	S2RGB	10.2	6.4	1.8	-2.9	-3.1	-3.6	-18.1	-6.0	-3.5	-10.2	0.6	0.7	1.1
Nelson/Marlborough/Tasman	S2RHB	0.3	2.6	1.5	-1.5	5.3	2.1	-3.7	1.8	-0.4	-4.4	-4.7	-4.8	-2.3
Canterbury	S2RIB	-1.6	1.5	-0.1	-1.1	3.4	6.5	5.6	7.4	-1.2	-0.9	-0.7	-1.3	1.2
West Coast	S2RJB	-0.2	3.3	1.2	1.9	1.5	5.8	2.6	2.8	-0.8	-2.5	-3.7	-0.5	-1.8
Otago	S2RKB	0.6	-2.5	4.9	-1.2	-1.6	1.3	12.2	2.6	1.9	1.5	0.5	-2.3	-3.1
Southland	S2RLB	-4.7	-0.2	5.8	-3.6	2.2	-0.9	-4.9	-5.6	-4.1	-10.6	0.5	2.4	-1.0
<b>New Zealand</b>	<b>S2RZB</b>	<b>3.1</b>	<b>1.8</b>	<b>3.4</b>	<b>-0.6</b>	<b>2.4</b>	<b>1.6</b>	<b>1.3</b>	<b>0.3</b>	<b>-0.9</b>	<b>-3.9</b>	<b>-1.5</b>	<b>-3.4</b>	<b>-2.3</b>

(1) More detailed information is available from regional tourism organisations or Statistics New Zealand.

Table 3

## Total Guest Nights

	Actual series		Seasonally adjusted series <sup>(1)(2)</sup>		Trend series <sup>(1)(3)</sup>		
	Guest nights (000)	Change from same month previous year (percent)	Guest nights (000)	Change from previous month (percent)	Guest nights (000)	Change from previous month (percent)	
<i>Series ref: ACS</i>	<i>S4A9Z03</i>		<i>S4S9Z03</i>		<i>S4T9Z03</i>		
<b>Month</b>							
2005	Jan	4,338	4.4	2,654 R	1.0 R	2,617 R	0 R
	Feb	3,212	1.5	2,570 R	-3.2 R	2,617 R	0 R
	Mar	3,389	11.1	2,799 R	8.9 R	2,617 R	0 R
	Apr	2,643	-1.7	2,530 R	-9.6 R	2,616 R	0 R
	May	1,808	0	2,579 R	1.9 R	2,614 R	-0.1 R
	Jun	1,829	7.1	2,799 R	8.5 R	2,611 R	-0.1 R
	Jul	2,169	2.7	2,681 R	-4.2 R	2,608 R	-0.1 R
	Aug	1,942	0.4	2,580 R	-3.8 R	2,605 R	-0.1 R
	Sep	2,129	-2.7	2,580 R	0 R	2,603 R	-0.1 R
	Oct	2,362	2.1	2,618 R	1.4 R	2,601 R	-0.1 R
	Nov	2,619	-1.3	2,587 R	-1.2 R	2,600 R	-0.1 R
	Dec	3,070	-3.3	2,561 R	-1.0 R	2,599 R	0 R
2006	Jan	4,263	-1.7	2,612 R	2.0 R	2,598 R	0 R
	Feb	3,292	2.5	2,624 R	0.5 R	2,599 R	0 R
	Mar	3,162	-6.7	2,599 R	-1.0 R	2,603 R	0.1 R
	Apr	2,746	3.9	2,636 R	1.4 R	2,608 R	0.2 R
	May	1,836	1.5	2,622 R	-0.5 R	2,615 R	0.3 R
	Jun	1,702	-6.9	2,601 R	-0.8 R	2,625 R	0.4 R
	Jul	2,082	-4.0	2,575 R	-1.0 R	2,636 R	0.4 R
	Aug	2,002	3.1	2,653 R	3.0 R	2,650 R	0.5 R
	Sep	2,197	3.2	2,658 R	0.2 R	2,664 R	0.6 R
	Oct	2,474	4.7	2,743 R	3.2 R	2,680 R	0.6 R
	Nov	2,740	4.6	2,704 R	-1.4 R	2,696 R	0.6 R
	Dec	3,210	4.6	2,693 R	-0.4 R	2,711 R	0.6 R
2007	Jan	4,364	2.4	2,674 R	-0.7 R	2,725 R	0.5 R
	Feb	3,493	6.1	2,781 R	4.0 R	2,738 R	0.4 R
	Mar	3,399	7.5	2,786 R	0.2 R	2,747 R	0.3 R
	Apr	2,814	2.5	2,703 R	-3.0 R	2,753 R	0.2 R
	May	1,942	5.8	2,774 R	2.6 R	2,756 R	0.1 R
	Jun	1,809	6.3	2,763 R	-0.4 R	2,757 R	0 R
	Jul	2,205	5.9	2,728 R	-1.2 R	2,757 R	0 R
	Aug	2,131	6.4	2,819 R	3.3 R	2,756 R	0 R
	Sep	2,286	4.1	2,766 R	-1.9 R	2,754 R	-0.1 R
	Oct	2,439	-1.4	2,700 R	-2.4 R	2,751 R	-0.1 R
	Nov	2,795	2.0	2,756 R	2.0 R	2,748 R	-0.1 R
	Dec	3,239	0.9	2,728 R	-1.0 R	2,745 R	-0.1 R
2008	Jan	4,461	2.2	2,736	0.3	2,736	-0.3

(1) All figures are subject to revision when the seasonal adjustment program is run each period.

(2) The seasonally adjusted series differs from the actual series in that the seasonal changes have been removed.

(3) The trend series differs from the actual series in that both the seasonal and irregular components have been removed.

**Symbol:**

R revised

Table 4

**Seasonally Adjusted and Trend Guest Nights<sup>(1)</sup>**  
By accommodation type

Accommodation type	Series ref. ACSM	Month													2008 Jan
		2007													
		Jan	Feb	Mar	Apr	May	Jun	Jul	Aug	Sep	Oct	Nov	Dec		
<b>Seasonally adjusted guest nights (000)<sup>(2)</sup></b>															
Hotels/resorts	S4SAZ03	856 R	861 R	870 R	848 R	849 R	859 R	852 R	875 R	861 R	853 R	873 R	857 R	889	
Motels/motor inns/apartments	S4SBZ03	903 R	930 R	926 R	900 R	945 R	919 R	904 R	954 R	920 R	903 R	925 R	907 R	901	
Hosted accommodation <sup>(3)</sup>	S4SCZ03	49 R	51 R	50 R	46 R	46 R	47 R	44 R	47 R	46 R	46 R	49 R	49 R	48	
Backpackers/hostels	S4SDZ03	371 R	376 R	378 R	379 R	376 R	386 R	386 R	391 R	391 R	371 R	372 R	372 R	360	
Caravan parks/camping grounds	S4SEZ03	514 R	564 R	551 R	537 R	571 R	542 R	539 R	559 R	553 R	529 R	538 R	540 R	540	
<b>Percentage change from previous month</b>															
Hotels/resorts	S4SAZ03	-1.2 R	0.6 R	1.1 R	-2.6 R	0.2 R	1.1 R	-0.7 R	2.6 R	-1.6 R	-0.8 R	2.2 R	-1.7 R	3.7	
Motels/motor inns/apartments	S4SBZ03	-0.5 R	3.1 R	-0.4 R	-2.9 R	5.0 R	-2.7 R	-1.7 R	5.6 R	-3.6 R	-1.9 R	2.4 R	-1.9 R	-0.7	
Hosted accommodation <sup>(3)</sup>	S4SCZ03	1.4 R	5.2 R	-2.6 R	-7.4 R	-0.5 R	2.1 R	-6.5 R	6.9 R	-0.9 R	0.2 R	5.8 R	0.3 R	-2.6	
Backpackers/hostels	S4SDZ03	1.9 R	1.2 R	0.7 R	0.2 R	-0.9 R	2.7 R	0.1 R	1.1 R	0.2 R	-5.2 R	0.3 R	0 R	-3.3	
Caravan parks/camping grounds	S4SEZ03	-0.7 R	9.7 R	-2.2 R	-2.5 R	6.2 R	-5.1 R	-0.4 R	3.7 R	-1.1 R	-4.3 R	1.6 R	0.5 R	0	
<b>Guest nights trend (000)<sup>(4)</sup></b>															
Hotels/resorts	S4TAZ03	862 R	861 R	858 R	856 R	856 R	857 R	858 R	860 R	862 R	864 R	867 R	870 R	874	
Motels/motor inns/apartments	S4TBZ03	914 R	917 R	920 R	922 R	923 R	923 R	922 R	921 R	920 R	918 R	916 R	914 R	910	
Hosted accommodation <sup>(3)</sup>	S4TCZ03	49 R	48 R	48 R	47 R	47 R	47 R	47 R	47 R	47 R	47 R	47 R	47 R	48	
Backpackers/hostels	S4TDZ03	373 R	374 R	376 R	379 R	382 R	385 R	386 R	386 R	383 R	379 R	374 R	369 R	365	
Caravan parks/camping grounds	S4TEZ03	537 R	541 R	544 R	547 R	548 R	548 R	548 R	547 R	546 R	544 R	543 R	541 R	538	
<b>Percentage change from previous month</b>															
Hotels/resorts	S4TAZ03	0.1 R	-0.2 R	-0.3 R	-0.2 R	-0.1 R	0.1 R	0.2 R	0.2 R	0.3 R	0.3 R	0.3 R	0.4 R	0.4	
Motels/motor inns/apartments	S4TBZ03	0.4 R	0.4 R	0.3 R	0.2 R	0.1 R	0 R	-0.1 R	-0.1 R	-0.2 R	-0.2 R	-0.2 R	-0.2 R	-0.4	
Hosted accommodation <sup>(3)</sup>	S4TCZ03	-0.5 R	-0.8 R	-0.9 R	-0.9 R	-0.8 R	-0.6 R	-0.3 R	0.1 R	0.3 R	0.4 R	0.5 R	0.4 R	0.4	
Backpackers/hostels	S4TDZ03	0.4 R	0.4 R	0.5 R	0.7 R	0.9 R	0.7 R	0.4 R	-0.1 R	-0.7 R	-1.1 R	-1.3 R	-1.3 R	-1.2	
Caravan parks/camping grounds	S4TEZ03	0.9 R	0.8 R	0.6 R	0.4 R	0.2 R	0.1 R	-0.1 R	-0.2 R	-0.2 R	-0.3 R	-0.2 R	-0.3 R	-0.7	

(1) All figures are subject to revision when the seasonal adjustment program is run each period.

(2) The seasonally adjusted series differs from the actual series in that the seasonal changes have been removed.

(3) Hosted accommodation includes private hotels, guest houses, bed and breakfasts, and farmstays.

(4) The trend series differs from the actual series in that both the seasonal and irregular components have been removed.

**Symbol:**

R revised

Table 5

## North Island Guest Nights

	Actual series		Seasonally adjusted series <sup>(1)(2)</sup>		Trend series <sup>(1)(3)</sup>		
	Guest nights (000)	Change from same month previous year (percent)	Guest nights (000)	Change from previous month (percent)	Guest nights (000)	Change from previous month (percent)	
<i>Series ref: ACS</i>	<i>S4A9R03</i>		<i>S4S9R03</i>		<i>S4T9R03</i>		
<b>Month</b>							
2005	Jan	2,508	3.4	1,549 R	1.2 R	1,522 R	0.1 R
	Feb	1,749	0.4	1,485 R	-4.1 R	1,524 R	0.1 R
	Mar	1,890	10.5	1,609 R	8.3 R	1,525 R	0.1 R
	Apr	1,546	0.3	1,507 R	-6.3 R	1,526 R	0 R
	May	1,116	0.1	1,504 R	-0.3 R	1,525 R	-0.1 R
	Jun	1,126	3.5	1,561 R	3.8 R	1,523 R	-0.1 R
	Jul	1,336	3.9	1,600 R	2.5 R	1,519 R	-0.2 R
	Aug	1,145	0.4	1,498 R	-6.3 R	1,515 R	-0.3 R
	Sep	1,266	-1.2	1,495 R	-0.2 R	1,510 R	-0.3 R
	Oct	1,410	1.6	1,518 R	1.5 R	1,506 R	-0.3 R
	Nov	1,481	-0.7	1,494 R	-1.6 R	1,502 R	-0.3 R
	Dec	1,743	-3.5	1,488 R	-0.4 R	1,498 R	-0.2 R
2006	Jan	2,397	-4.4	1,486 R	-0.1 R	1,497 R	-0.1 R
	Feb	1,788	2.2	1,514 R	1.9 R	1,498 R	0.1 R
	Mar	1,769	-6.4	1,495 R	-1.3 R	1,501 R	0.2 R
	Apr	1,555	0.6	1,523 R	1.9 R	1,507 R	0.4 R
	May	1,117	0.1	1,509 R	-0.9 R	1,515 R	0.5 R
	Jun	1,087	-3.4	1,505 R	-0.2 R	1,524 R	0.6 R
	Jul	1,259	-5.7	1,511 R	0.3 R	1,535 R	0.7 R
	Aug	1,195	4.4	1,559 R	3.2 R	1,546 R	0.7 R
	Sep	1,327	4.8	1,559 R	0 R	1,558 R	0.7 R
	Oct	1,489	5.6	1,604 R	2.9 R	1,568 R	0.7 R
	Nov	1,571	6.1	1,583 R	-1.3 R	1,577 R	0.6 R
	Dec	1,825	4.7	1,566 R	-1.1 R	1,585 R	0.5 R
2007	Jan	2,517	5.0	1,564 R	-0.2 R	1,591 R	0.4 R
	Feb	1,920	7.4	1,625 R	3.9 R	1,595 R	0.2 R
	Mar	1,931	9.2	1,625 R	0 R	1,597 R	0.1 R
	Apr	1,607	3.3	1,576 R	-3.0 R	1,597 R	0 R
	May	1,189	6.4	1,609 R	2.1 R	1,597 R	0 R
	Jun	1,143	5.1	1,580 R	-1.8 R	1,597 R	0 R
	Jul	1,301	3.4	1,563 R	-1.1 R	1,596 R	0 R
	Aug	1,244	4.2	1,622 R	3.8 R	1,596 R	0 R
	Sep	1,388	4.6	1,628 R	0.4 R	1,596 R	0 R
	Oct	1,454	-2.3	1,563 R	-4.0 R	1,595 R	0 R
	Nov	1,601	1.9	1,611 R	3.1 R	1,595 R	0 R
	Dec	1,839	0.7	1,583 R	-1.7 R	1,594 R	-0.1 R
2008	Jan	2,559	1.7	1,594	0.7	1,591	-0.2

(1) All figures are subject to revision when the seasonal adjustment program is run each period.

(2) The seasonally adjusted series differs from the actual series in that the seasonal changes have been removed.

(3) The trend series differs from the actual series in that both the seasonal and irregular components have been removed.

**Symbol:**

R revised

Table 6

## South Island Guest Nights

	Actual series		Seasonally adjusted series <sup>(1)(2)</sup>		Trend series <sup>(1)(3)</sup>		
	Guest nights (000)	Change from same month previous year (percent)	Guest nights (000)	Change from previous month (percent)	Guest nights (000)	Change from previous month (percent)	
Series ref: ACS	S4A9S03		S4S9S03		S4T9S03		
<b>Month</b>							
2005	Jan	1,830	5.9	1,104 R	0.6 R	1,098 R	-0.1 R
	Feb	1,463	2.7	1,083 R	-1.9 R	1,097 R	-0.1 R
	Mar	1,499	11.9	1,182 R	9.1 R	1,095 R	-0.2 R
	Apr	1,097	-4.6	1,025 R	-13.3 R	1,093 R	-0.2 R
	May	692	-0.2	1,076 R	5.0 R	1,091 R	-0.2 R
	Jun	703	13.4	1,251 R	16.2 R	1,090 R	-0.1 R
	Jul	834	1.0	1,090 R	-12.8 R	1,089 R	-0.1 R
	Aug	797	0.3	1,082 R	-0.8 R	1,090 R	0 R
	Sep	863	-4.8	1,086 R	0.4 R	1,091 R	0.1 R
	Oct	952	2.8	1,100 R	1.3 R	1,093 R	0.2 R
	Nov	1,138	-2.0	1,093 R	-0.7 R	1,096 R	0.2 R
	Dec	1,327	-2.9	1,073 R	-1.8 R	1,098 R	0.2 R
2006	Jan	1,866	2.0	1,125 R	4.9 R	1,099 R	0.1 R
	Feb	1,504	2.8	1,108 R	-1.5 R	1,100 R	0.1 R
	Mar	1,393	-7.1	1,097 R	-1.1 R	1,100 R	0 R
	Apr	1,190	8.5	1,114 R	1.6 R	1,100 R	0 R
	May	718	3.8	1,115 R	0.1 R	1,100 R	0 R
	Jun	615	-12.5	1,088 R	-2.5 R	1,101 R	0 R
	Jul	823	-1.3	1,078 R	-0.9 R	1,102 R	0.1 R
	Aug	807	1.3	1,093 R	1.4 R	1,104 R	0.2 R
	Sep	870	0.8	1,098 R	0.4 R	1,107 R	0.3 R
	Oct	985	3.4	1,139 R	3.7 R	1,112 R	0.4 R
	Nov	1,168	2.7	1,122 R	-1.5 R	1,118 R	0.6 R
	Dec	1,385	4.4	1,127 R	0.5 R	1,126 R	0.7 R
2007	Jan	1,846	-1.1	1,111 R	-1.4 R	1,134 R	0.8 R
	Feb	1,573	4.6	1,158 R	4.2 R	1,143 R	0.7 R
	Mar	1,467	5.3	1,154 R	-0.3 R	1,150 R	0.7 R
	Apr	1,207	1.4	1,129 R	-2.2 R	1,156 R	0.5 R
	May	753	4.8	1,166 R	3.4 R	1,160 R	0.3 R
	Jun	666	8.4	1,174 R	0.7 R	1,162 R	0.2 R
	Jul	904	9.8	1,185 R	0.9 R	1,162 R	0 R
	Aug	886	9.8	1,198 R	1.1 R	1,161 R	-0.1 R
	Sep	898	3.2	1,137 R	-5.2 R	1,159 R	-0.2 R
	Oct	985	0	1,138 R	0.1 R	1,157 R	-0.2 R
	Nov	1,194	2.1	1,145 R	0.6 R	1,154 R	-0.2 R
	Dec	1,400	1.1	1,144 R	-0.1 R	1,151 R	-0.2 R
2008	Jan	1,902	3.0	1,143	-0.2	1,146	-0.4

(1) All figures are subject to revision when the seasonal adjustment program is run each period.

(2) The seasonally adjusted series differs from the actual series in that the seasonal changes have been removed.

(3) The trend series differs from the actual series in that both the seasonal and irregular components have been removed.

**Symbol:**

R revised

Accommodation Survey: January 2008

Table 7

Regional Guest Nights

Region	Series ref: ACSM	Month												
		2007												2008
		Jan	Feb	Mar	Apr	May	Jun	Jul	Aug	Sep	Oct	Nov	Dec	Jan
<b>Guest Nights (000)</b>														
Northland	S6RA03	364	205	184	144	90	76	79	76	93	116	129	215	355
Auckland	S6RB03	562	521	570	461	379	375	415	417	429	455	542	485	595
Waikato	S6RC03	408	302	299	249	164	163	186	172	196	200	214	267	405
Bay of Plenty	S6RD03	510	318	307	284	195	179	211	176	227	242	254	353	532
Hawke's Bay/Gisborne	S6RE03	234	136	140	119	76	72	77	74	82	104	97	153	217
Taranaki/Manawatu-Wanganui	S6RF03	191	174	165	134	103	105	146	151	156	132	134	145	198
Wellington	S6RG03	249	264	267	217	182	173	186	178	204	206	231	222	256
Nelson/Marlborough/Tasman	S6RH03	372	255	220	170	100	85	87	90	95	119	156	237	385
Canterbury	S6RI03	617	558	528	455	296	275	339	325	357	412	481	520	661
West Coast	S6RJ03	178	174	151	117	68	56	64	59	75	93	118	136	177
Otago	S6RK03	562	463	450	382	240	215	377	375	325	300	351	413	563
Southland	S6RL03	118	122	119	83	48	35	37	37	45	60	87	94	115
<b>New Zealand</b>	<b>S6RZ03</b>	<b>4,364</b>	<b>3,493</b>	<b>3,399</b>	<b>2,814</b>	<b>1,942</b>	<b>1,809</b>	<b>2,205</b>	<b>2,131</b>	<b>2,286</b>	<b>2,439</b>	<b>2,795</b>	<b>3,239</b>	<b>4,461</b>
<b>Percentage change from the same month of the previous year<sup>(1)</sup></b>														
Northland		14.2	8.5	5.6	-5.5	8.6	3.8	-7.2	2.3	0.3	-10.0	-6.5	2.5	-2.3
Auckland		6.0	6.9	13.4	6.1	3.4	7.8	15.8	10.7	8.6	-0.8	9.9	0.9	5.8
Waikato		1.9	8.1	6.4	1.1	9.3	-0.4	-2.4	8.2	3.4	-2.8	-11.9	-6.9	-0.6
Bay of Plenty		3.8	4.7	11.4	6.5	9.9	4.2	2.2	-7.8	8.7	-0.2	4.4	3.1	4.4
Hawke's Bay/Gisborne		2.0	-2.6	2.9	2.8	15.3	6.1	5.7	-0.7	4.5	-0.1	-2.5	-1.5	-6.9
Taranaki/Manawatu-Wanganui		-2.7	14.7	7.0	4.4	-0.1	1.4	-5.6	0.8	-7.9	-6.5	8.3	3.7	4.1
Wellington		7.8	11.3	8.7	2.4	6.1	8.4	-2.0	5.4	6.4	-1.2	0.1	4.9	2.5
Nelson/Marlborough/Tasman		-3.4	2.2	4.7	6.0	14.6	12.7	6.3	13.2	1.9	-3.4	-0.7	2.1	3.6
Canterbury		-1.9	3.9	1.8	1.2	1.6	8.9	9.5	14.5	3.1	2.5	6.0	2.8	7.1
West Coast		3.2	11.0	3.1	-1.4	7.2	8.9	9.7	9.0	8.3	-5.2	-2.2	0.3	-0.5
Otago		0.8	4.9	9.7	1.3	4.0	5.5	11.9	6.2	2.6	0.6	0.8	-1.1	0.3
Southland		-4.0	3.0	10.0	-2.3	7.0	11.4	1.9	1.7	3.2	-4.4	-1.2	0	-2.3
<b>New Zealand</b>		<b>2.4</b>	<b>6.1</b>	<b>7.5</b>	<b>2.5</b>	<b>5.8</b>	<b>6.3</b>	<b>5.9</b>	<b>6.4</b>	<b>4.1</b>	<b>-1.4</b>	<b>2.0</b>	<b>0.9</b>	<b>2.2</b>

(1) Percentage changes are calculated on unrounded figures.