

Embargoed until 10:45am – 11 May 2007

Accommodation Survey

March 2007

Highlights

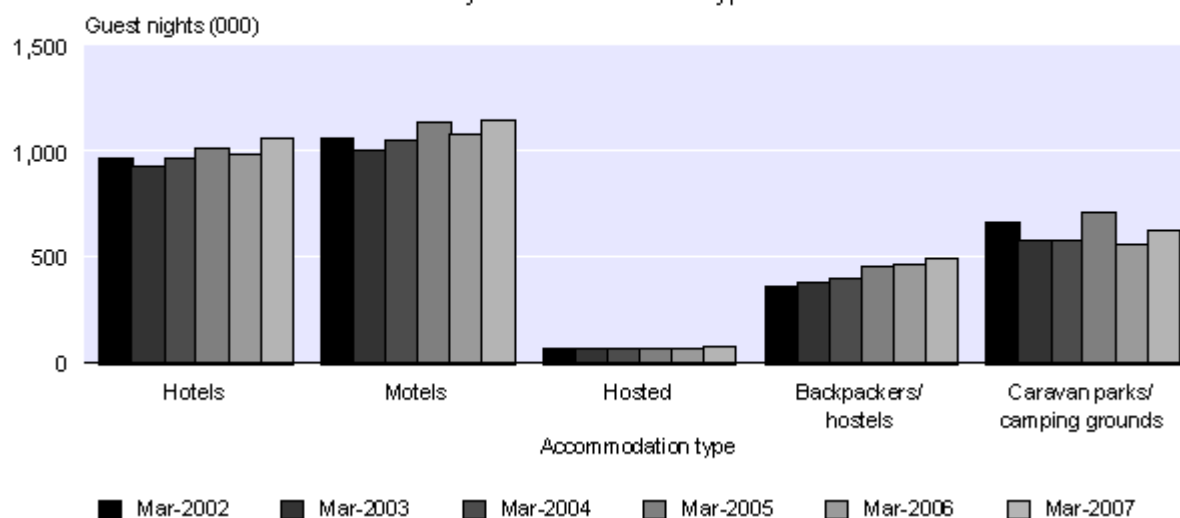
In March 2007:

- Total guest nights were 7 percent higher than in March 2006.
- All 12 regions recorded more guest nights than in March 2006.
- All five accommodation types recorded more guest nights than in March 2006.

In the March 2007 year:

- Total guest nights were 3 percent higher than in the March 2006 year.
- All 12 regions recorded more guest nights than in the March 2006 year.
- All five accommodation types recorded more guest nights than in the March 2006 year.

Guest Nights
By accommodation type



Dallas Welch (Mrs)
Acting Government Statistician

11 May 2007
Cat 70.905 Set 06/07 – 173

There is a companion Media Release published – [Accommodation Survey: March 2007](#).

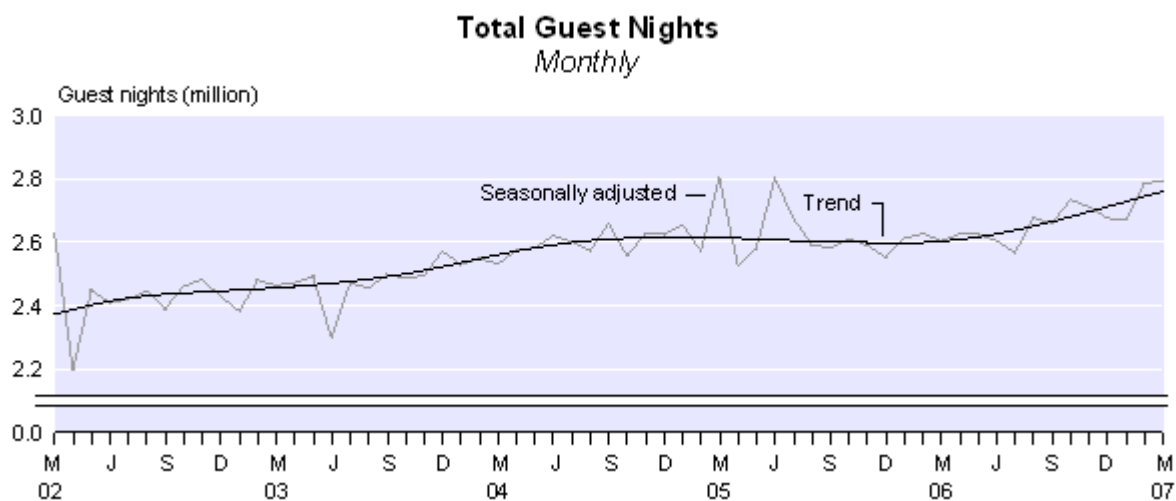
Commentary

Total guest nights

Total guest nights in short-term commercial accommodation were 3.4 million in March 2007, a 7 percent increase compared with March 2006 and a similar level to March 2005. It should be noted that in 2005, Easter fell in March.

Total guest nights for the March 2007 year were 3 percent higher than for the previous March year.

The trend in total guest nights has been increasing since January 2006 after a flat period that began in December 2004. In March 2007, the trend level was 6 percent higher than in both March 2006 and 2005.



Comparison with short-term overseas visitor arrival statistics

The Hot Off The Press release *External Migration: March 2007* shows that short-term overseas visitor arrivals in New Zealand for March 2007 were up 12,200 (5 percent) on March 2006. This follows an increase of 15,100 (6 percent) in February 2007 compared with February 2006.

Similarly, the number of stay days for all visitor arrivals in March 2007 was up 9 percent on March 2006. This follows an increase of 2 percent in February 2007 compared with February 2006.

For visitors arriving in March 2007, the average length of stay was 18 days, unchanged from the previous March. For visitors arriving in February 2007, the average length of stay was 22 days, compared with 23 days for February 2006.

New Zealand resident short-term departures for March were up 8,800 (7 percent) on March 2006. This follows an increase of 5,200 (6 percent) in February 2007 compared with February 2006.

Guest nights by island

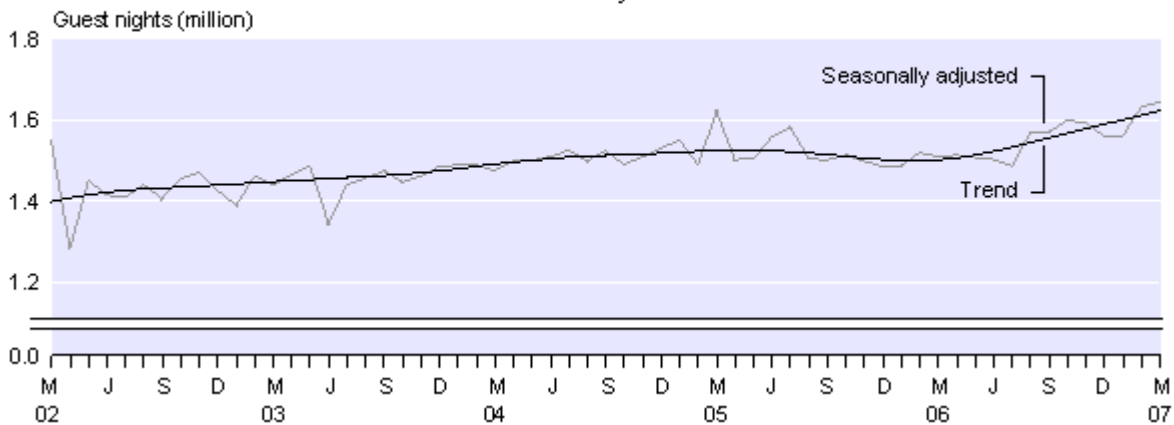
Guest nights in the North Island were 1.9 million in March 2007, a 9 percent increase compared with March 2006. Guest nights in the South Island were 1.5 million, a 5 percent increase compared with March 2006.

The trend in North Island guest nights has been increasing since February 2006, following a period of decreases that began in June 2005. In March 2007, the trend level was 8 percent higher than in March 2006 and 6 percent higher than in March 2005.

The trend in South Island guest nights has been increasing since August 2005, after a period of flatness. In March 2007, the trend level was 4 percent higher than in both March 2006 and 2005.

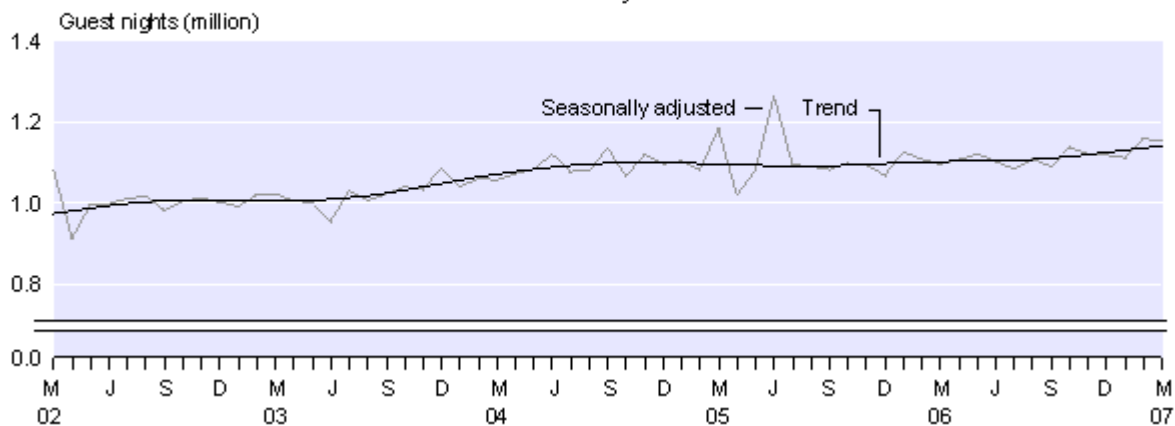
North Island Guest Nights

Monthly



South Island Guest Nights

Monthly



Guest nights by region

In March 2007, all 12 regions recorded more guest nights than in March 2006. This is the first month since March 2005 that all 12 regions have recorded increases when compared with the same month of the previous year. Auckland (up 67,000 or 13 percent) had the largest absolute increase in guest nights, followed by Otago (up 40,000 or 10 percent) and Bay of Plenty (up 31,000 or 11 percent).

The Wellington region (up 21,000 or 9 percent) recorded its highest monthly guest nights total since the survey began in July 1996. This is the third consecutive month that Wellington has recorded its highest monthly guest nights total.

All 12 regions recorded more guest nights in the March 2007 year than in the previous March year. Auckland (up 160,000 or 3 percent) recorded the largest absolute increase in guest nights, followed by Wellington (up 158,000 or 7 percent) and Otago (up 129,000 or 3 percent).

Guest nights by accommodation type

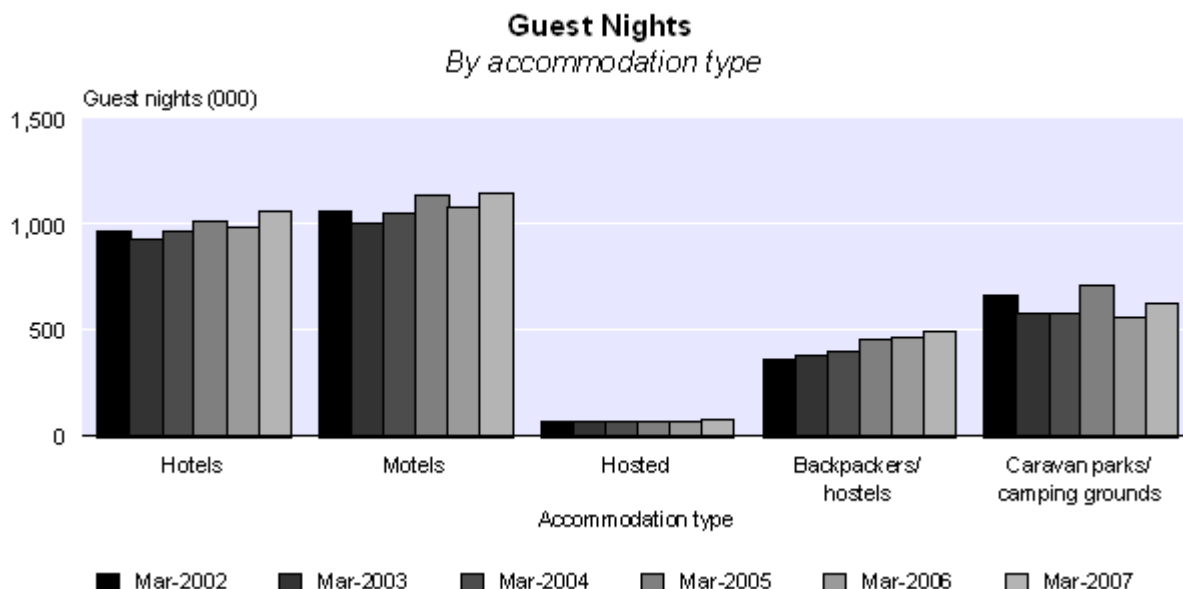
All five accommodation types recorded more guest nights in March 2007 than in March 2006. Hotels (up 72,000 or 7 percent) had the largest absolute increase, followed by caravan parks/camping grounds (up 65,000 or 12 percent) and motels (up 64,000 or 6 percent).

In March 2007, for the second month in a row, hotels recorded their highest monthly guest night totals since the survey began.

Motels had the largest share of total guest nights (34 percent) in March 2007, followed by hotels (31 percent) and caravan parks/camping grounds (18 percent).

All five accommodation types recorded more guest nights in the March 2007 year than in the previous March year. Motels (up 289,000 or 3 percent) recorded the largest absolute increase, followed by hotels (up 251,000 or 3 percent) and caravan parks/camping grounds (up 227,000 or 4 percent).

For the March 2007 year, motels recorded the largest share of total guest nights (34 percent), followed by hotels (31 percent) and caravan parks/camping grounds (20 percent).



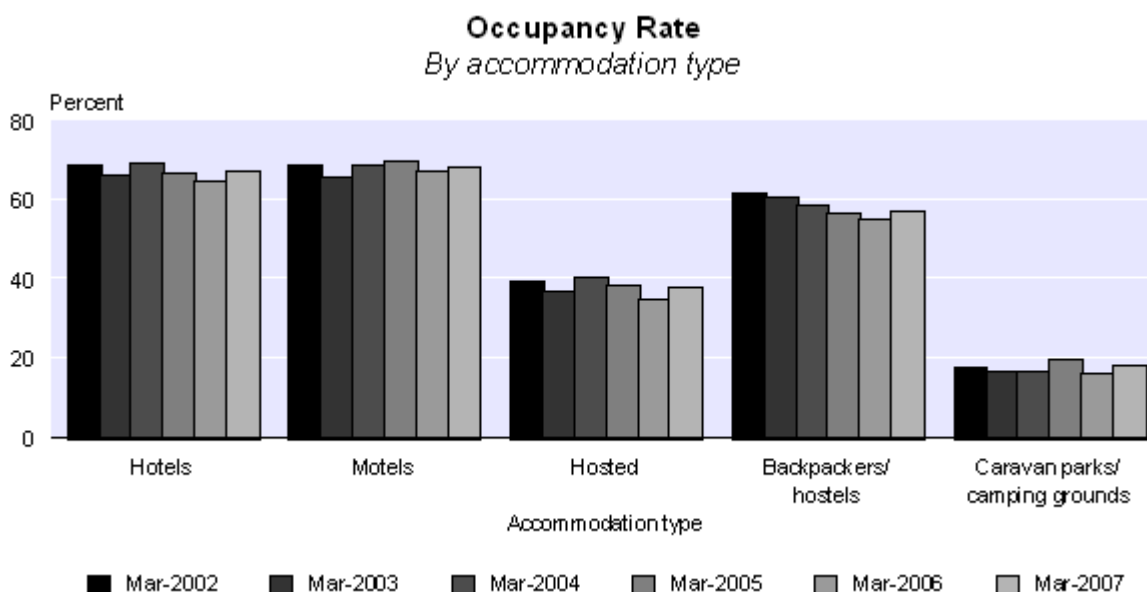
Occupancy rate

The March 2007 occupancy rate, excluding caravan parks/camping grounds, was 64 percent compared with 61 percent in March 2006.

Accommodation capacity, excluding caravan parks/camping grounds, was 3 percent above the March 2006 level.

Motels recorded the highest occupancy rate (68 percent) of all the accommodation types in March 2007, followed by hotels (67 percent) and backpackers/hostels (57 percent).

Excluding caravan parks/camping grounds, Auckland had the highest occupancy rate (71 percent) in March 2007, followed by Wellington (69 percent) and Otago (68 percent).



Non-response imputation

When respondents do not answer questions in the Accommodation Survey, Statistics New Zealand estimates the missing information based on data from similar establishments in the same and/or similar areas. For more information, please refer to the Technical notes of this release or contact Statistics NZ.

Response rates by accommodation type for March 2007

Accommodation type	Proportion of establishments responding to questions on guest nights, guest arrivals and stay unit nights	Proportion of the guest night estimate from establishments that responded to the question on guest nights
Hotels	79 percent	91 percent
Motels	80 percent	83 percent
Hosted	84 percent	85 percent
Backpackers/hostels	79 percent	78 percent
Caravan parks / camping grounds	82 percent	89 percent
Total New Zealand	81 percent	86 percent

Survey sponsorship

The Accommodation Survey is a monthly survey undertaken by Statistics NZ and sponsored by the Ministry of Tourism.

For technical information contact:
Tehseen Islam or Karen Brohm
Christchurch 03 964 8700
Email: info@stats.govt.nz

Technical notes

Population

The target population for this survey is all 'geographic units' (called 'establishments' in this publication) that are classified as short-term (less than one month) commercial accommodation providers operating in New Zealand. In terms of the Australian and New Zealand Standard Industrial Classification (ANZSIC), the target population is taken from class 5710 (accommodation), and the part of class 5720 (pubs, taverns and bars) that also provides accommodation.

The survey frame is all short-term commercial accommodation-providing geographic units belonging to an economically significant 'enterprise'. Economic significance is generally determined as being GST registered and having a turnover of at least \$30,000 per annum.

Survey errors

This survey aims for 100 percent coverage of the population (ie a full census). In practice, however, an overall response rate of between 76 and 80 percent is usually achieved. The remaining units are given imputed values based upon the characteristics of similar establishments in the same or similar regions. Imputation introduces unknown errors into the estimates, and this should be borne in mind by users of the data. The size of these unknown errors is difficult to quantify.

Other errors occur for reasons such as respondent error, frame quality and errors in processing. While every effort is made to minimise these errors, they will still occur. It is not possible to quantify their effect.

Trend estimates

For any series, the survey estimates can be broken down into three components: trend, seasonal and irregular. While seasonally adjusted series have had the seasonal component removed, the trend series have had both the seasonal and the irregular components removed. Trend estimates reveal the underlying direction of movement in a series, and are likely to indicate turning points more accurately than seasonally adjusted estimates.

The accommodation trend series are calculated using the X-12-ARIMA seasonal adjustment package. They are based on optimal moving averages of the seasonally adjusted series, with an adjustment for outlying values. The X-12-ARIMA package is an updated version of X-11-ARIMA, developed by the US Bureau of the Census.

The trend estimates towards the end of the series incorporate new data as it becomes available, and can therefore change as more observations are added to the series. Revisions can be particularly large if an observation is treated as an outlier in one month, but is found to be part of the underlying trend as further observations are added to the series. All trend estimates are subject to revisions each month, but normally only the last two or three estimates are likely to be substantially altered.

Trend estimates versus month-on-month comparisons

Trend estimates reveal the underlying direction of the movement in a series. In contrast, comparisons between one month and the same month in the previous year(s) do not take account of data recorded in between these periods, and are subject to one-off fluctuations. Reasons for fluctuations include changes in the timing of holidays, international crises, and large sporting and cultural events.

Seasonally adjusted estimates

The X-12-ARIMA package has been used to produce the seasonally adjusted estimates referred to in the Commentary text. Seasonal adjustment aims to eliminate the impact of regular seasonal events. These may be due to climatic effects (such as more guests staying in camping grounds during the summer) or calendar effects (such as holidays). This makes the data for adjacent months more comparable. All seasonally adjusted figures are subject to revision each month.

Further information about [seasonal adjustment](#) is available on the Statistics New Zealand website.

Classification of accommodation type

The predominant capacity provided determines the accommodation type. For instance, if a business provides both motel and camping ground accommodation, but the majority of its stay units are motel rooms, then it would be classified as a motel. The classification system used is the New Zealand Accommodation Classification, broadly defined below:

- Hotels: includes both hotels and resorts
- Motels: includes motor inns, apartments and motels
- Hosted: includes private hotels, guest houses, bed and breakfasts, and holiday farm (farmstay) accommodation
- Backpackers/hostels
- Caravan parks/camping grounds.

Further information on the classification system is available on request.

Classification of residence of guest

Every third month (January, April, July and October), the survey asks all respondents to classify their guests as coming from the following regions:

Domestic

Auckland
Wellington
Rest of North Island
Canterbury
Otago
Rest of South Island
Don't know

International

Australia
Japan
Korea
Other Asia
UK and Ireland
Germany
Other Europe
North America
Other
Don't know

Other definitions

Business Frame

A register (maintained by Statistics NZ) of all economically significant businesses operating in New Zealand from which the survey population is drawn.

Establishment

The smallest statistical unit operating within a single physical location and owned by a single enterprise. The term is used to represent what is usually called the 'geographic unit' in other Statistics NZ publications.

Guest night

A guest night is equivalent to one guest spending one night at an establishment. For example, a motel with 15 guests spending two nights would report provision of 30 guest nights of accommodation.

Stay unit

The term used to describe the unit of accommodation that is available to be charged out to guests (eg a powered site in a caravan park, a bed in a backpackers, a room in a hotel or motel).

Capacity (stay unit nights available)

This is the basic measure of an establishment's accommodation capacity. It is defined as one stay unit multiplied by one night. For example, 10 units in a motel available for guest use (whether occupied or not) for the full 31 days in July would have an accommodation capacity of 310 stay unit nights.

Occupancy rate

This derived variable is calculated by dividing stay unit nights occupied by stay unit nights available. In the case of the motel above, if six of its 10 units were occupied every night in July, it would have $6 \times 31 = 186$ stay unit nights occupied, and its occupancy rate would be 60 percent.

Average length of stay

This derived variable is calculated by dividing total guest nights by total guest first nights.

More information

For more information, follow the [link](#) from the Technical notes of this release on the Statistics NZ website.

Confidentiality

Data collected and information contained in this publication must conform to the provisions of the Statistics Act 1975. This requires that published information maintains the confidentiality of individual respondents.

Copyright

Information obtained from Statistics NZ may be freely used, reproduced, or quoted unless otherwise specified. In all cases Statistics NZ must be acknowledged as the source.

Liability

While care has been used in processing, analysing and extracting information, Statistics NZ gives no warranty that the information supplied is free from error. Statistics NZ shall not be liable for any loss suffered through the use, directly or indirectly, of any information, product or service.

Timing

Timed statistical releases are delivered using postal and electronic services provided by third parties. Delivery of these releases may be delayed by circumstances outside the control of Statistics NZ. Statistics NZ accepts no responsibility for any such delays.

Next release ...

Accommodation Survey: April 2007 will be released on 12 June 2007.

Statistics New Zealand: The first source of independent information for your key decisions.

Tables

The following tables can be downloaded from the Statistics New Zealand website in Excel 97 format. If you do not have access to Excel 97 or higher, you may use the [Excel file viewer](#) to view, print and export the contents of the file.

List of tables

1. Establishments, capacity, guest nights, occupancy rate and average stay, by accommodation type
2. Occupancy rate excluding caravan parks/camping grounds, by region
3. Total guest nights
4. Seasonally adjusted and trend guest nights, by accommodation type
5. North Island guest nights
6. South Island guest nights

Accommodation pivot tables

The Accommodation Pivot Tables provide more detailed information, breaking the survey variables down by regional tourism organisation areas and territorial authority areas.

- **Regional Tourism Organisation (RTO) Area by Accommodation Type (Type)**
Contains number of establishments, capacity, occupancy rates, guest nights, guest arrivals, length of stay and some ratios of these variables.

The graph on the first worksheet will change to display the RTO and Type you select on the second worksheet. When printing the graph, select a cell rather than the graph so the heading will print.

- **Total Accommodation by Territorial Authority (TA)**
Contains number of establishments, capacity, occupancy rates, guest nights, guest arrivals, length of stay and some ratios of these variables.
- **Origin of Guests and Employment Information by Regional Tourism Organisation (RTO)**
Contains domestic and international guest night variables and employees.

Printing a selection of data in a spreadsheet

If you only want to print out some of the information in a spreadsheet, either select the pages you want in the print box, or hide the data you don't want to print by highlighting the columns or rows of data you don't want, then right mouse click and select 'Hide'.

Accommodation Survey: March 2007

Table 1

Establishments, Capacity, Guest Nights, Occupancy Rate and Average Stay⁽¹⁾⁽²⁾⁽³⁾
By accommodation type

Accommodation type	Series ref: ACSM	Month												
		2006										2007		
		Mar	Apr	May	Jun	Jul	Aug	Sep	Oct	Nov	Dec	Jan	Feb	Mar
Hotels/resorts														
Number of establishments	S1AA	574	573	573	569	566	566	566	568	569	570	569	566	568
Capacity (000)	S1AB	955	927	955	908	939	939	922	964	936	967	972	875	979
Guest nights (000)	S1AC	989	831	667	603	727	733	766	852	977	886	1,002	1,041	1,061
Occupancy rate (percent)	S1AD	64.9	53.6	47.2	44.6	47.9	50.3	52.5	55.7	65.8	52.9	58.8	72.3	67.3
Average stay (nights)	S1AE	1.7	1.7	1.8	1.8	2.0	1.9	1.9	1.8	1.7	1.8	1.9	1.8	1.8
Motels/motor inns/apartments														
Number of establishments	S1BA	1,717	1,715	1,706	1,703	1,703	1,716	1,732	1,745	1,748	1,757	1,760	1,769	1,769
Capacity (000)	S1BB	815	789	814	786	814	821	800	834	809	839	840	766	850
Guest nights (000)	S1BC	1,079	956	637	638	797	742	814	875	902	972	1,242	1,126	1,143
Occupancy rate (percent)	S1BD	67.1	57.0	43.7	42.9	47.8	46.8	50.5	52.8	58.9	53.3	65.0	72.2	68.1
Average stay (nights)	S1BE	1.8	1.8	1.8	1.8	1.9	2.0	1.8	1.8	1.8	1.8	1.9	1.8	1.8
Hosted accommodation⁽⁴⁾														
Number of establishments	S1CA	659	653	598	575	552	566	594	628	658	663	674	680	679
Capacity (000)	S1CB	105	101	97	91	91	94	93	101	100	104	105	95	104
Guest nights (000)	S1CC	68	48	21	21	32	29	31	42	55	64	82	89	74
Occupancy rate (percent)	S1CD	34.8	25.3	13.0	13.5	17.9	16.7	18.4	22.9	30.5	31.4	39.6	48.5	37.9
Average stay (nights)	S1CE	1.7	1.8	1.9	2.0	2.3	2.3	2.0	1.8	1.7	1.8	1.8	1.8	1.8
Backpackers/hostels														
Number of establishments	S1DA	441	437	429	413	405	408	419	436	438	443	442	443	445
Capacity (000)	S1DB	762	734	751	716	735	737	721	762	736	760	760	695	774
Guest nights (000)	S1DC	464	384	276	251	287	276	278	319	390	427	504	483	496
Occupancy rate (percent)	S1DD	54.9	47.8	33.6	32.1	35.9	34.5	34.9	37.5	47.7	49.8	59.0	60.9	57.3
Average stay (nights)	S1DE	1.9	1.9	2.1	2.0	2.0	2.1	2.0	1.9	1.9	1.8	1.8	1.9	1.9
Total excluding caravan parks/camping grounds														
Number of establishments	S1XA	3,391	3,378	3,306	3,260	3,226	3,256	3,311	3,377	3,413	3,433	3,445	3,458	3,461
Capacity (000)	S1XB	2,637	2,551	2,617	2,501	2,581	2,591	2,535	2,661	2,580	2,670	2,677	2,431	2,708
Guest nights (000)	S1XC	2,601	2,219	1,602	1,514	1,842	1,780	1,890	2,088	2,324	2,348	2,830	2,737	2,773
Occupancy rate (percent)	S1XD	61.5	51.9	40.9	39.3	43.4	43.5	45.6	48.3	57.1	51.3	60.0	68.1	63.5
Average stay (nights)	S1XE	1.8	1.8	1.8	1.9	1.9	2.0	1.9	1.8	1.8	1.8	1.9	1.8	1.8
Caravan parks/camping grounds														
Number of establishments	S1EA	419	419	404	400	395	394	399	409	411	419	418	418	416
Capacity (000)	S1EB	1,667	1,609	1,521	1,446	1,480	1,480	1,441	1,593	1,540	1,622	1,622	1,456	1,605
Guest nights (000)	S1EC	561	527	234	189	240	222	307	386	416	862	1,534	755	626
Occupancy rate (percent)	S1ED	16.0	14.5	8.0	6.6	7.8	7.5	9.7	11.4	13.3	21.8	35.8	23.8	18.2
Average stay (nights)	S1EE	1.7	1.9	1.8	1.9	1.9	1.9	1.8	1.7	1.7	2.2	2.9	1.9	1.8
Total														
Number of establishments	S19A	3,810	3,797	3,710	3,660	3,621	3,650	3,710	3,786	3,824	3,852	3,863	3,876	3,877
Capacity (000)	S19B	4,304	4,160	4,138	3,947	4,061	4,071	3,976	4,255	4,120	4,292	4,299	3,886	4,314
Guest nights (000)	S19C	3,162	2,746	1,836	1,702	2,082	2,002	2,197	2,474	2,740	3,210	4,364	3,493	3,399
Occupancy rate (percent)	S19D	43.9	37.4	28.8	27.3	30.4	30.4	32.6	34.5	40.7	40.1	50.9	51.5	46.7
Average stay (nights)	S19E	1.8	1.8	1.8	1.9	1.9	2.0	1.9	1.8	1.8	1.9	2.1	1.8	1.8

For footnotes, see end of table.

Accommodation Survey: March 2007

Table 1
continued

Establishments, Capacity, Guest Nights, Occupancy Rate and Average Stay⁽¹⁾⁽²⁾⁽³⁾
By accommodation type

Accommodation type	Series ref: ACSM	Month												
		2006										2007		
		Mar	Apr	May	Jun	Jul	Aug	Sep	Oct	Nov	Dec	Jan	Feb	Mar
Percentage change from the same month of the previous year														
Hotels/resorts														
Number of establishments	S1AA	1.2	1.8	2.0	1.2	0.2	0.2	-0.5	-0.9	-1.9	-1.0	-1.2	-1.9	-1.0
Capacity	S1AB	4.7	4.8	2.2	-0.2	-0.3	-0.4	0.9	1.4	1.2	1.6	2.0	1.4	2.6
Guest nights	S1AC	-2.7	-0.7	0.2	-7.4	-6.3	2.5	2.4	6.2	4.2	7.1	6.6	3.4	7.3
Occupancy rate	S1AD	-2.9	-6.8	-0.3	-4.5	-4.6	3.7	0.3	3.0	2.5	2.5	6.2	1.4	3.8
Average stay (nights)	S1AE	-2.0	0.3	-0.2	-0.7	-1.5	0.3	0.4	3.7	1.5	3.4	5.9	2.2	5.2
Motels/motor inns/apartments														
Number of establishments	S1BA	2.0	1.5	1.1	2.0	1.7	2.6	2.5	3.0	2.9	2.6	2.6	3.2	3.0
Capacity	S1BB	2.7	2.0	2.3	2.6	2.4	2.8	2.9	3.1	3.3	3.0	1.9	4.2	4.3
Guest nights	S1BC	-4.8	3.3	1.9	-3.3	-2.7	3.9	3.1	2.6	4.8	4.6	0.7	5.5	5.9
Occupancy rate	S1BD	-3.5	-3.0	0.3	-5.8	-4.0	1.3	0.4	-0.3	1.5	1.7	0.6	1.1	1.4
Average stay (nights)	S1BE	-0.6	2.6	1.0	1.2	1.3	3.5	-0.5	0.9	2.1	1.6	0.9	1.4	0.1
Hosted accommodation⁽⁴⁾														
Number of establishments	S1CA	5.3	8.7	4.0	2.1	4.5	3.1	4.4	2.3	1.7	0.8	1.0	2.9	3.0
Capacity	S1CB	7.5	9.4	5.4	2.2	5.6	5.0	5.0	4.4	0.9	1.3	-0.1	0.7	-0.5
Guest nights	S1CC	-3.7	13.8	-2.4	-13.7	5.1	-1.1	7.1	9.0	9.8	5.0	-0.3	5.2	7.8
Occupancy rate	S1CD	-9.8	0.9	-6.5	-12.5	3.2	-2.5	2.4	7.3	9.3	4.9	0.3	3.0	8.9
Average stay (nights)	S1CE	0.7	0.7	8.5	6.4	3.6	10.2	-3.1	2.4	0.9	3.5	-1.1	-0.5	2.8
Backpackers/hostels														
Number of establishments	S1DA	7.6	6.6	7.8	4.0	3.1	2.0	1.2	0.7	0.7	0.2	1.1	0.7	0.9
Capacity	S1DB	7.4	7.0	7.5	5.9	2.3	1.7	1.0	1.8	1.0	1.1	2.1	1.7	1.6
Guest nights	S1DC	2.0	4.9	1.8	-7.4	-3.4	4.7	6.7	8.8	7.3	2.8	4.3	5.4	6.7
Occupancy rate	S1DD	-3.3	1.8	-5.2	-12.6	-1.9	3.5	5.6	7.2	7.0	0.1	2.7	3.2	4.3
Average stay (nights)	S1DE	0.1	-1.2	7.4	5.3	-1.6	0.7	0	0.8	-0.3	-1.9	0.1	3.2	3.9
Total excluding caravan parks/camping grounds														
Number of establishments	S1XA	3.2	3.5	2.6	2.2	2.1	2.2	2.2	1.9	1.5	1.3	1.5	1.9	2.1
Capacity	S1XB	4.9	4.7	3.8	2.5	1.5	1.4	1.7	2.2	1.8	1.9	1.9	2.3	2.7
Guest nights	S1XC	-2.8	2.2	1.1	-5.8	-4.1	3.4	3.4	5.1	5.1	5.2	3.4	4.7	6.6
Occupancy rate	S1XD	-3.5	-3.4	-1.6	-7.2	-3.8	2.6	1.5	2.8	3.4	1.6	3.1	1.8	3.4
Average stay (nights)	S1XE	-1.0	1.1	1.6	1.1	-0.2	1.8	-0.1	2.1	1.5	1.7	2.4	2.0	2.7
Caravan parks/camping grounds														
Number of establishments	S1EA	1.9	4.2	2.5	2.0	3.1	3.7	2.0	1.2	0.5	0.2	-0.5	-0.7	-0.7
Capacity	S1EB	1.2	2.0	-0.1	-1.0	-0.4	0.3	-0.8	-2.0	-2.9	-3.2	-3.6	-4.4	-3.7
Guest nights	S1EC	-21.3	11.5	4.6	-14.9	-3.2	0.8	1.9	2.9	2.1	2.8	0.6	11.7	11.5
Occupancy rate	S1ED	-18.1	9.2	8.6	-10.2	-0.8	5.9	5.2	7.6	5.7	9.6	7.2	17.4	13.8
Average stay (nights)	S1EE	-8.9	2.7	-0.4	-0.1	0.4	-1.8	-2.0	-1.6	-1.3	0.8	-0.8	1.7	4.3
Total														
Number of establishments	S19A	3.1	3.6	2.6	2.1	2.2	2.4	2.1	1.8	1.4	1.2	1.3	1.7	1.8
Capacity	S19B	3.5	3.6	2.3	1.2	0.8	1.0	0.8	0.6	0	-0.1	-0.2	-0.3	0.2
Guest nights	S19C	-6.7	3.9	1.5	-6.9	-4.0	3.1	3.2	4.7	4.6	4.6	2.4	6.1	7.5
Occupancy rate	S19D	-5.1	-1.1	0.4	-6.6	-3.1	3.2	2.5	4.5	4.9	4.2	4.9	5.8	6.4
Average stay (nights)	S19E	-2.6	1.4	1.3	1.0	-0.1	1.4	-0.4	1.5	1.0	1.4	1.3	2.0	3.0

- (1) Establishments that are temporarily closed for more than 14 days during a month are excluded from the results.
(2) Establishments primarily offering accommodation for periods of one month or more are excluded from the survey.
(3) Monthly capacity shows the number of stay units available and is affected by the number of days in a month.
(4) Hosted accommodation includes private hotels, guest houses, bed and breakfasts, and farmstays.

Accommodation Survey: March 2007

Table 2

Occupancy Rate Excluding Caravan Parks/Camping Grounds⁽¹⁾
By region

Region	Series ref: ACSM	Month													
		2006											2007		
		Mar	Apr	May	Jun	Jul	Aug	Sep	Oct	Nov	Dec	Jan	Feb	Mar	
Occupancy rate (percent)															
Northland	S2RAB	55.0	47.3	33.1	29.0	31.1	29.2	34.0	43.0	49.6	47.3	63.0	64.8	57.3	
Auckland	S2RBB	67.4	55.7	50.5	50.2	48.6	53.0	54.9	58.8	67.2	56.5	62.1	71.2	71.4	
Waikato	S2RCB	55.7	46.4	34.0	36.6	37.3	34.5	38.6	40.2	50.5	46.6	56.4	58.0	56.5	
Bay of Plenty	S2RDB	61.3	55.5	44.3	43.6	45.6	45.0	48.2	54.4	60.0	55.7	63.6	66.3	63.5	
Hawke's Bay/Gisborne	S2REB	62.7	49.4	37.2	37.9	36.5	38.5	40.9	47.2	51.1	49.5	64.0	64.6	63.5	
Taranaki/Manawatu-Wanganui	S2RFB	46.2	39.1	35.0	33.9	44.9	43.2	47.9	40.2	40.5	34.6	42.4	51.7	48.9	
Wellington	S2RGB	67.8	58.6	52.3	50.8	56.3	51.3	56.5	58.7	65.6	52.6	57.8	74.8	69.0	
Nelson/Marlborough/Tasman	S2RHB	61.1	48.4	32.3	31.0	32.1	31.2	32.7	38.0	51.6	53.9	67.3	72.4	62.1	
Canterbury	S2RIB	62.2	52.2	39.1	35.6	40.8	38.5	44.0	48.3	58.7	51.7	58.6	69.9	62.2	
West Coast	S2RJB	56.6	44.5	28.1	23.3	25.9	24.7	28.7	36.9	49.5	45.9	58.6	67.1	57.3	
Otago	S2RKB	65.1	58.3	42.3	40.1	54.5	59.6	50.3	45.9	58.6	55.7	65.7	73.9	68.3	
Southland	S2RLB	58.0	45.4	30.8	24.7	25.7	27.2	29.5	37.9	50.3	46.4	56.4	68.6	61.4	
New Zealand	S2RZB	61.5	51.9	40.9	39.3	43.4	43.5	45.6	48.3	57.1	51.3	60.0	68.1	63.5	
Percentage change from the same month of the previous year															
Northland	S2RAB	-2.7	8.3	-1.1	3.7	3.2	-0.5	2.5	14.0	4.8	-1.2	2.3	2.4	4.3	
Auckland	S2RBB	-4.4	-10.3	-3.2	-2.9	-12.3	4.8	1.8	5.2	3.7	1.3	7.7	2.0	5.9	
Waikato	S2RCB	1.3	-3.3	-3.1	-4.4	-4.9	0.9	0.1	-2.2	7.3	5.6	6.1	3.1	1.6	
Bay of Plenty	S2RDB	-1.8	-0.4	-3.1	-7.9	-6.3	9.2	7.8	3.8	1.6	2.2	1.7	-3.4	3.7	
Hawke's Bay/Gisborne	S2REB	2.3	-3.8	-3.6	-0.5	-4.8	4.5	-0.5	1.8	8.9	5.2	8.7	1.1	1.4	
Taranaki/Manawatu-Wanganui	S2RFB	-1.9	-3.6	3.8	-9.6	15.1	0.2	7.9	-2.6	-2.9	-3.4	3.6	11.3	6.0	
Wellington	S2RGB	-5.7	-8.6	-3.1	-6.6	1.1	3.9	1.3	6.0	6.0	4.4	10.2	6.4	1.8	
Nelson/Marlborough/Tasman	S2RHB	-6.5	-0.5	-6.6	-10.9	-1.3	-4.5	-2.8	-0.9	4.7	6.6	0.3	2.6	1.5	
Canterbury	S2RIB	-6.2	-6.6	-4.2	-20.2	-3.9	-3.0	1.7	-1.6	2.6	2.1	-1.6	1.5	-0.1	
West Coast	S2RJB	-2.7	4.8	-1.0	-11.2	-0.7	-0.4	-0.3	0.8	-0.7	-1.3	-0.2	3.3	1.2	
Otago	S2RKB	-1.0	5.7	5.0	-2.2	-3.7	5.8	-3.1	3.9	3.5	-2.5	0.6	-2.5	4.9	
Southland	S2RLB	-11.6	-4.4	3.9	-6.3	-2.7	-3.8	-3.2	2.5	-5.1	1.7	-4.7	-0.2	5.8	
New Zealand	S2RZB	-3.5	-3.4	-1.6	-7.2	-3.8	2.6	1.5	2.8	3.4	1.6	3.1	1.8	3.4	

(1) More detailed information is available from regional tourism organisations or Statistics New Zealand.

Accommodation Survey: March 2007

Table 3

Total Guest Nights

	Actual series		Seasonally adjusted series ⁽¹⁾⁽²⁾		Trend series ⁽¹⁾⁽³⁾		
	Guest nights (000)	Change from same month previous year (percent)	Guest nights (000)	Change from previous month (percent)	Guest nights (000)	Change from previous month (percent)	
<i>Series ref. ACS</i>	<i>S4A9Z03</i>		<i>S4S9Z03</i>		<i>S4T9Z03</i>		
Month							
2004	Mar	3,050	3.4	2,532 R	-0.6 R	2,560 R	0.5 R
	Apr	2,690	4.1	2,575 R	1.7 R	2,572 R	0.4 R
	May	1,808	3.9	2,582 R	0.3 R	2,582 R	0.4 R
	Jun	1,707	14.7	2,622 R	1.5 R	2,591 R	0.4 R
	Jul	2,111	5.6	2,602 R	-0.8 R	2,599 R	0.3 R
	Aug	1,935	4.4	2,573 R	-1.1 R	2,605 R	0.2 R
	Sep	2,187	6.8	2,659 R	3.3 R	2,609 R	0.2 R
	Oct	2,314	2.7	2,556 R	-3.9 R	2,612 R	0.1 R
	Nov	2,652	5.5	2,629 R	2.9 R	2,613 R	0.1 R
	Dec	3,174	1.3	2,625 R	-0.2 R	2,614 R	0 R
2005	Jan	4,338	4.4	2,654 R	1.1 R	2,614 R	0 R
	Feb	3,212	1.5	2,571 R	-3.1 R	2,614 R	0 R
	Mar	3,389	11.1	2,802 R	9.0 R	2,613 R	0 R
	Apr	2,643	-1.7	2,526 R	-9.8 R	2,612 R	0 R
	May	1,808	0	2,581 R	2.2 R	2,611 R	-0.1 R
	Jun	1,829	7.1	2,803 R	8.6 R	2,608 R	-0.1 R
	Jul	2,169	2.7	2,675 R	-4.5 R	2,606 R	-0.1 R
	Aug	1,942	0.4	2,593 R	-3.1 R	2,604 R	-0.1 R
	Sep	2,129	-2.7	2,582 R	-0.4 R	2,602 R	-0.1 R
	Oct	2,362	2.1	2,610 R	1.1 R	2,601 R	-0.1 R
	Nov	2,619	-1.3	2,590 R	-0.8 R	2,599 R	0 R
	Dec	3,070	-3.3	2,552 R	-1.5 R	2,598 R	0 R
2006	Jan	4,263	-1.7	2,612 R	2.3 R	2,598 R	0 R
	Feb	3,292	2.5	2,627 R	0.6 R	2,600 R	0.1 R
	Mar	3,162	-6.7	2,604 R	-0.9 R	2,603 R	0.1 R
	Apr	2,746	3.9	2,627 R	0.9 R	2,609 R	0.2 R
	May	1,836	1.5	2,624 R	-0.1 R	2,617 R	0.3 R
	Jun	1,702	-6.9	2,606 R	-0.7 R	2,627 R	0.4 R
	Jul	2,082	-4.0	2,567 R	-1.5 R	2,638 R	0.4 R
	Aug	2,002	3.1	2,677 R	4.3 R	2,651 R	0.5 R
	Sep	2,197	3.2	2,660 R	-0.7 R	2,665 R	0.5 R
	Oct	2,474	4.7	2,735 R	2.8 R	2,680 R	0.6 R
	Nov	2,740	4.6	2,711 R	-0.9 R	2,696 R	0.6 R
	Dec	3,210	4.6	2,676 R	-1.3 R	2,712 R	0.6 R
2007	Jan	4,364	2.4	2,671 R	-0.2 R	2,728 R	0.6 R
	Feb	3,493	6.1	2,786 R	4.3 R	2,745 R	0.6 R
	Mar	3,399	7.5	2,794	0.3	2,760	0.6

(1) All figures are subject to revision when the seasonal adjustment program is run each period.

(2) The seasonally adjusted series differs from the actual series in that the seasonal changes have been removed.

(3) The trend series differs from the actual series in that both the seasonal and irregular components have been removed.

Symbol:

R revised

Accommodation Survey: March 2007

Table 4

Seasonally Adjusted and Trend Guest Nights⁽¹⁾
By accommodation type

Accommodation type	Series ref: ACSM	Month														
		2006												2007		
		Mar	Apr	May	Jun	Jul	Aug	Sep	Oct	Nov	Dec	Jan	Feb	Mar		
Seasonally adjusted guest nights (000)⁽²⁾																
Hotels/resorts	S4SAZ03	815 R	823 R	830 R	828 R	793 R	835 R	837 R	856 R	860 R	859 R	862 R	863 R	873		
Motels/motor inns/apartments	S4SBZ03	881 R	885 R	890 R	878 R	867 R	908 R	894 R	916 R	909 R	902 R	903 R	933 R	931		
Hosted accommodation ⁽³⁾	S4SCZ03	47 R	48 R	42 R	47 R	48 R	46 R	48 R	51 R	49 R	48 R	49 R	52 R	50		
Backpackers/hostels	S4SDZ03	356 R	353 R	348 R	350 R	344 R	361 R	359 R	372 R	370 R	365 R	371 R	376 R	379		
Caravan parks/camping grounds	S4SEZ03	495 R	511 R	523 R	484 R	512 R	527 R	524 R	545 R	521 R	513 R	512 R	565 R	553		
Percentage change from previous month																
Hotels/resorts	S4SAZ03	-2.4 R	1.0 R	0.9 R	-0.3 R	-4.2 R	5.2 R	0.2 R	2.3 R	0.6 R	-0.2 R	0.3 R	0.2 R	1.2		
Motels/motor inns/apartments	S4SBZ03	-0.4 R	0.4 R	0.5 R	-1.3 R	-1.3 R	4.7 R	-1.6 R	2.5 R	-0.7 R	-0.8 R	0.1 R	3.3 R	-0.2		
Hosted accommodation ⁽³⁾	S4SCZ03	-5.0 R	1.5 R	-11.9 R	11.2 R	4.2 R	-5.1 R	4.0 R	5.6 R	-2.4 R	-2.0 R	1.6 R	5.1 R	-2.4		
Backpackers/hostels	S4SDZ03	-0.4 R	-0.9 R	-1.5 R	0.6 R	-1.8 R	5.2 R	-0.8 R	3.8 R	-0.7 R	-1.2 R	1.4 R	1.5 R	0.6		
Caravan parks/camping grounds	S4SEZ03	-1.7 R	3.1 R	2.5 R	-7.4 R	5.7 R	2.9 R	-0.5 R	4.0 R	-4.4 R	-1.6 R	-0.1 R	10.3 R	-2.2		
Guest nights trend (000)⁽⁴⁾																
Hotels/resorts	S4TAZ03	818 R	820 R	824 R	828 R	832 R	837 R	842 R	847 R	852 R	857 R	862 R	867 R	871		
Motels/motor inns/apartments	S4TBZ03	881 R	883 R	885 R	887 R	890 R	894 R	898 R	902 R	906 R	911 R	916 R	920 R	925		
Hosted accommodation ⁽³⁾	S4TCZ03	47 R	47 R	48 R	48 R	48 R	48 R	48 R	49 R	49 R	49 R	50 R	50 R	50		
Backpackers/hostels	S4TDZ03	355 R	352 R	350 R	350 R	352 R	356 R	361 R	365 R	368 R	370 R	372 R	374 R	376		
Caravan parks/camping grounds	S4TEZ03	505 R	506 R	507 R	510 R	513 R	517 R	521 R	524 R	528 R	532 R	536 R	540 R	543		
Percentage change from previous month																
Hotels/resorts	S4TAZ03	0.2 R	0.3 R	0.4 R	0.5 R	0.5 R	0.6 R	0.6 R	0.6 R	0.6 R	0.6 R	0.6 R	0.6 R	0.5		
Motels/motor inns/apartments	S4TBZ03	0.1 R	0.2 R	0.2 R	0.3 R	0.3 R	0.4 R	0.4 R	0.5 R	0.5 R	0.5 R	0.5 R	0.5 R	0.5		
Hosted accommodation ⁽³⁾	S4TCZ03	0.3 R	0.2 R	0.2 R	0.2 R	0.3 R	0.4 R	0.6 R	0.7 R	0.8 R	0.8 R	0.8 R	0.9 R	0.7		
Backpackers/hostels	S4TDZ03	-0.2 R	-0.7 R	-0.6 R	-0.1 R	0.6 R	1.1 R	1.3 R	1.2 R	0.9 R	0.6 R	0.5 R	0.5 R	0.5		
Caravan parks/camping grounds	S4TEZ03	-0.1 R	0.1 R	0.3 R	0.5 R	0.6 R	0.7 R	0.7 R	0.7 R	0.7 R	0.7 R	0.7 R	0.8 R	0.6		

(1) All figures are subject to revision when the seasonal adjustment program is run each period.

(2) The seasonally adjusted series differs from the actual series in that the seasonal changes have been removed.

(3) Hosted accommodation includes private hotels, guest houses, bed and breakfasts, and farmstays.

(4) The trend series differs from the actual series in that both the seasonal and irregular components have been removed.

Symbol:

R revised

Accommodation Survey: March 2007

Table 5

North Island Guest Nights

	Actual series		Seasonally adjusted series ⁽¹⁾⁽²⁾		Trend series ⁽¹⁾⁽³⁾	
	Guest nights (000)	Change from same month previous year (percent)	Guest nights (000)	Change from previous month (percent)	Guest nights (000)	Change from previous month (percent)
<i>Series ref. ACS</i>	<i>S4A9R03</i>		<i>S4S9R03</i>		<i>S4T9R03</i>	
Month						
2004 Mar	1,711	3.1	1,474 R	-1.0 R	1,491 R	0.4 R
Apr	1,541	2.0	1,498 R	1.6 R	1,496 R	0.3 R
May	1,115	1.4	1,501 R	0.2 R	1,500 R	0.3 R
Jun	1,087	13.0	1,508 R	0.5 R	1,504 R	0.3 R
Jul	1,286	6.5	1,526 R	1.1 R	1,508 R	0.2 R
Aug	1,140	3.0	1,498 R	-1.8 R	1,510 R	0.2 R
Sep	1,281	4.0	1,525 R	1.8 R	1,512 R	0.1 R
Oct	1,388	3.0	1,490 R	-2.3 R	1,514 R	0.1 R
Nov	1,491	3.1	1,509 R	1.2 R	1,515 R	0.1 R
Dec	1,807	2.1	1,529 R	1.4 R	1,517 R	0.1 R
2005 Jan	2,508	3.4	1,550 R	1.4 R	1,520 R	0.1 R
Feb	1,749	0.4	1,488 R	-4.0 R	1,522 R	0.2 R
Mar	1,890	10.5	1,621 R	8.9 R	1,524 R	0.1 R
Apr	1,546	0.3	1,502 R	-7.3 R	1,525 R	0.1 R
May	1,116	0.1	1,503 R	0.1 R	1,525 R	0 R
Jun	1,126	3.5	1,558 R	3.7 R	1,524 R	-0.1 R
Jul	1,336	3.9	1,581 R	1.5 R	1,522 R	-0.2 R
Aug	1,145	0.4	1,503 R	-4.9 R	1,518 R	-0.2 R
Sep	1,266	-1.2	1,501 R	-0.2 R	1,514 R	-0.3 R
Oct	1,410	1.6	1,513 R	0.8 R	1,510 R	-0.3 R
Nov	1,481	-0.7	1,498 R	-1.0 R	1,505 R	-0.3 R
Dec	1,743	-3.5	1,484 R	-0.9 R	1,501 R	-0.3 R
2006 Jan	2,397	-4.4	1,487 R	0.2 R	1,499 R	-0.2 R
Feb	1,788	2.2	1,519 R	2.2 R	1,498 R	0 R
Mar	1,769	-6.4	1,509 R	-0.7 R	1,501 R	0.2 R
Apr	1,555	0.6	1,513 R	0.2 R	1,506 R	0.3 R
May	1,117	0.1	1,508 R	-0.3 R	1,513 R	0.5 R
Jun	1,087	-3.4	1,502 R	-0.4 R	1,522 R	0.6 R
Jul	1,259	-5.7	1,486 R	-1.0 R	1,532 R	0.7 R
Aug	1,195	4.4	1,569 R	5.6 R	1,543 R	0.7 R
Sep	1,327	4.8	1,570 R	0 R	1,555 R	0.7 R
Oct	1,489	5.6	1,598 R	1.8 R	1,566 R	0.7 R
Nov	1,571	6.1	1,592 R	-0.4 R	1,578 R	0.7 R
Dec	1,825	4.7	1,558 R	-2.1 R	1,589 R	0.7 R
2007 Jan	2,517	5.0	1,562 R	0.2 R	1,600 R	0.7 R
Feb	1,920	7.4	1,631 R	4.5 R	1,611 R	0.7 R
Mar	1,931	9.2	1,643	0.7	1,623	0.7

(1) All figures are subject to revision when the seasonal adjustment program is run each period.

(2) The seasonally adjusted series differs from the actual series in that the seasonal changes have been removed.

(3) The trend series differs from the actual series in that both the seasonal and irregular components have been removed.

Symbol:

R revised

Accommodation Survey: March 2007

Table 6

South Island Guest Nights

	Actual series		Seasonally adjusted series ⁽¹⁾⁽²⁾		Trend series ⁽¹⁾⁽³⁾	
	Guest nights (000)	Change from same month previous year (percent)	Guest nights (000)	Change from previous month (percent)	Guest nights (000)	Change from previous month (percent)
<i>Series ref. ACS</i>	<i>S4A9S03</i>		<i>S4S9S03</i>		<i>S4T9S03</i>	
Month						
2004 Mar	1,339	3.9	1,057 R	-0.3 R	1,071 R	0.7 R
Apr	1,150	7.0	1,073 R	1.5 R	1,077 R	0.6 R
May	694	8.3	1,083 R	1.0 R	1,083 R	0.5 R
Jun	620	17.8	1,120 R	3.4 R	1,088 R	0.5 R
Jul	825	4.2	1,077 R	-3.8 R	1,092 R	0.4 R
Aug	795	6.4	1,079 R	0.2 R	1,096 R	0.3 R
Sep	906	10.9	1,135 R	5.2 R	1,098 R	0.2 R
Oct	926	2.3	1,066 R	-6.1 R	1,099 R	0.1 R
Nov	1,162	8.6	1,119 R	5.1 R	1,100 R	0 R
Dec	1,367	0.4	1,096 R	-2.1 R	1,099 R	0 R
2005 Jan	1,830	5.9	1,104 R	0.8 R	1,098 R	-0.1 R
Feb	1,463	2.7	1,082 R	-2.0 R	1,097 R	-0.1 R
Mar	1,499	11.9	1,181 R	9.1 R	1,096 R	-0.1 R
Apr	1,097	-4.6	1,020 R	-13.6 R	1,094 R	-0.1 R
May	692	-0.2	1,079 R	5.8 R	1,093 R	-0.1 R
Jun	703	13.4	1,264 R	17.1 R	1,092 R	-0.1 R
Jul	834	1.0	1,094 R	-13.4 R	1,091 R	-0.1 R
Aug	797	0.3	1,090 R	-0.4 R	1,091 R	0 R
Sep	863	-4.8	1,082 R	-0.7 R	1,092 R	0.1 R
Oct	952	2.8	1,098 R	1.4 R	1,093 R	0.1 R
Nov	1,138	-2.0	1,092 R	-0.5 R	1,095 R	0.2 R
Dec	1,327	-2.9	1,069 R	-2.2 R	1,097 R	0.2 R
2006 Jan	1,866	2.0	1,125 R	5.3 R	1,099 R	0.2 R
Feb	1,504	2.8	1,108 R	-1.6 R	1,100 R	0.2 R
Mar	1,393	-7.1	1,096 R	-1.1 R	1,102 R	0.1 R
Apr	1,190	8.5	1,106 R	1.0 R	1,102 R	0.1 R
May	718	3.8	1,121 R	1.3 R	1,103 R	0.1 R
Jun	615	-12.5	1,102 R	-1.6 R	1,104 R	0.1 R
Jul	823	-1.3	1,085 R	-1.6 R	1,106 R	0.1 R
Aug	807	1.3	1,108 R	2.1 R	1,108 R	0.2 R
Sep	870	0.8	1,089 R	-1.7 R	1,111 R	0.3 R
Oct	985	3.4	1,137 R	4.4 R	1,115 R	0.4 R
Nov	1,168	2.7	1,120 R	-1.4 R	1,119 R	0.4 R
Dec	1,385	4.4	1,118 R	-0.2 R	1,124 R	0.5 R
2007 Jan	1,846	-1.1	1,111 R	-0.6 R	1,130 R	0.5 R
Feb	1,573	4.6	1,158 R	4.2 R	1,136 R	0.5 R
Mar	1,467	5.3	1,154	-0.4	1,140	0.4

(1) All figures are subject to revision when the seasonal adjustment program is run each period.

(2) The seasonally adjusted series differs from the actual series in that the seasonal changes have been removed.

(3) The trend series differs from the actual series in that both the seasonal and irregular components have been removed.

Symbol:

R revised