

Embargoed until 10:45am – 12 May 2008

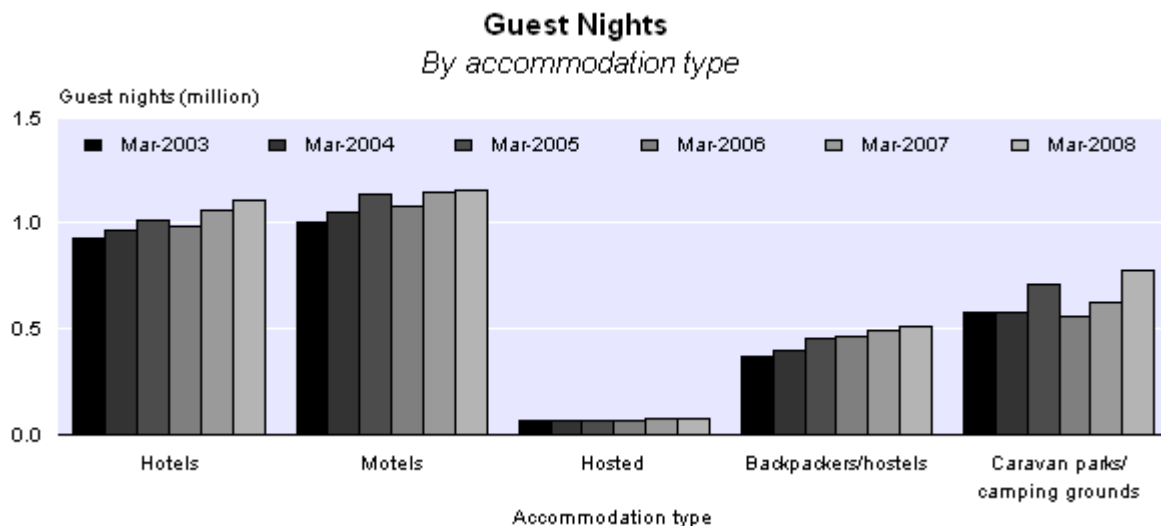
Accommodation Survey: March 2008

Highlights

In March 2008 compared with March 2007:

- Total guest nights increased 7 percent to 3.6 million.
- All five accommodation types showed higher guest nights, with caravan parks/camping grounds showing the largest increase.
- Eleven of the 12 regions showed higher guest nights, led by the Canterbury region.
- Seven of the 12 regions had more domestic guest nights than international guest nights.

In 2008 the Easter holidays occurred in March, whereas in 2007, they occurred in April.



Geoff Bascand
Government Statistician

12 May 2008
ISSN 1178-0207

There is a companion Media Release published – [Accommodation Survey: March 2008](#).

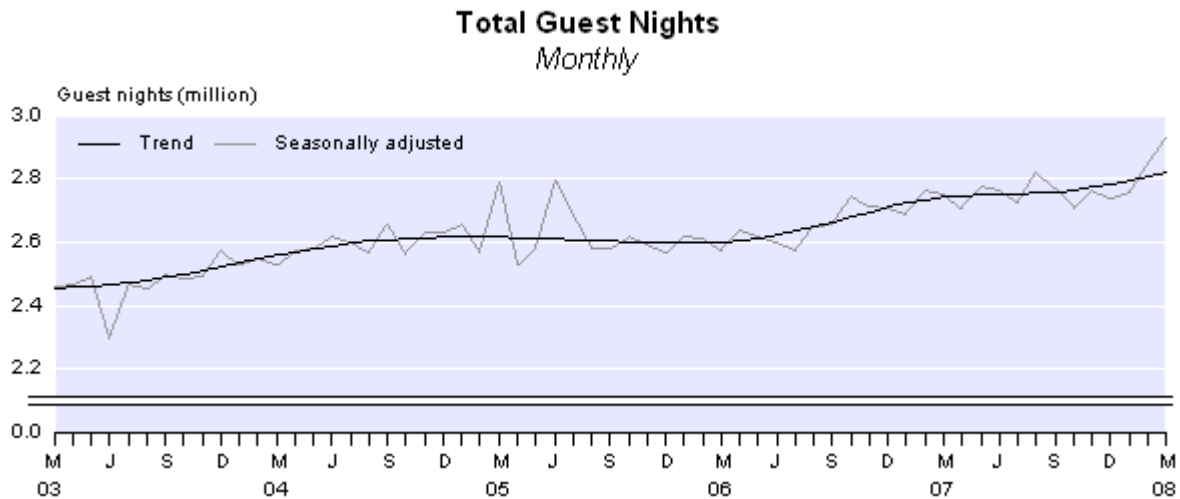
Commentary

Total guest nights

Total guest nights in short-term commercial accommodation were 3.6 million in March 2008, an increase of 7 percent compared with March 2007 and 15 percent compared with March 2006.

In 2008 the Easter holidays occurred in March, whereas in 2006 and 2007 they occurred in April.

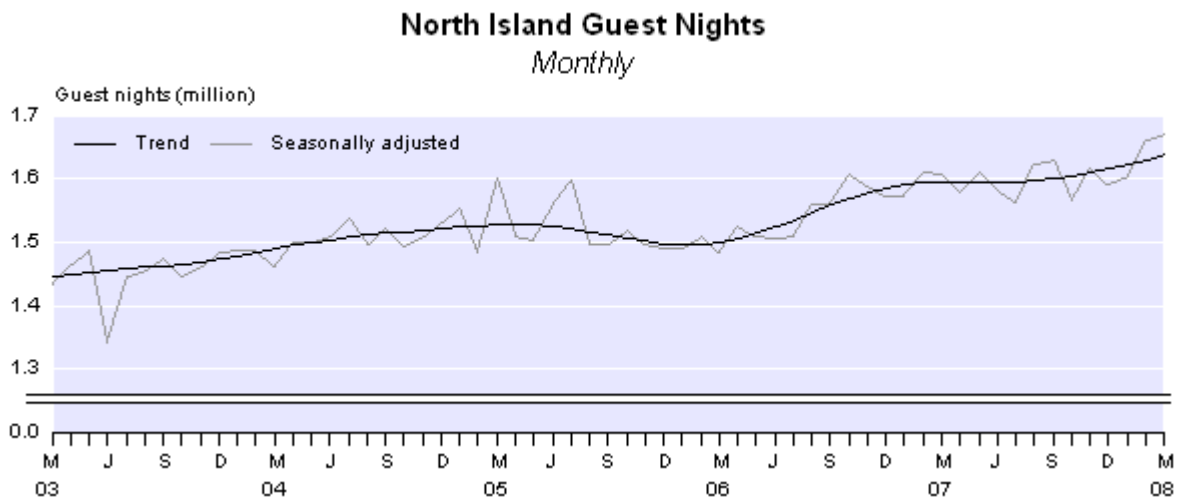
The trend for total guest nights has been increasing since February 2006. In March 2008, the trend level was 3 percent higher than in March 2007 and 9 percent higher than in March 2006.



Guest nights by island

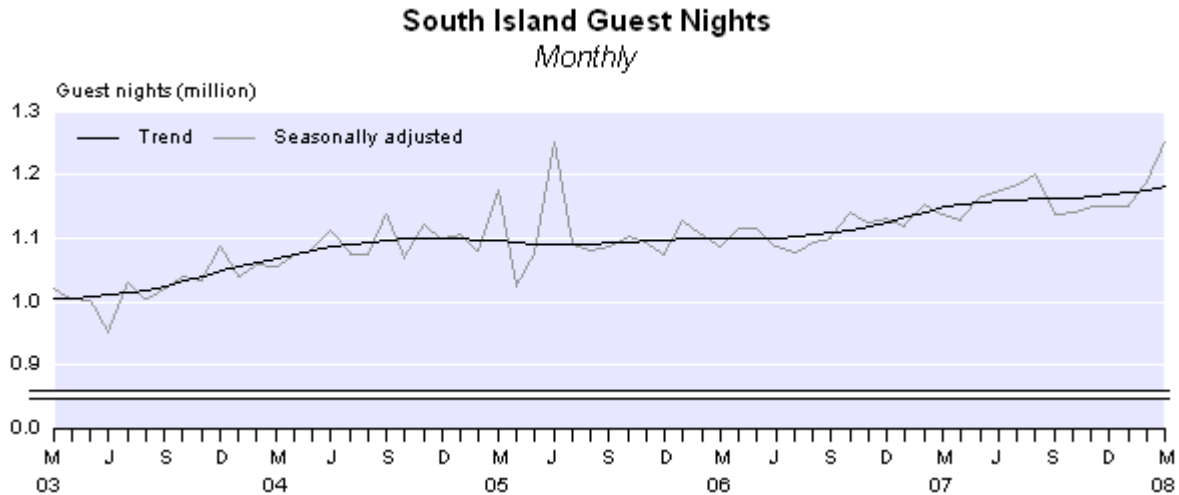
Guest nights in the North Island were 2.0 million in March 2008, a 4 percent increase compared with March 2007 and a 14 percent increase compared with March 2006.

The trend for North Island guest nights has been increasing since June 2007. In March 2008, the trend level was 3 percent higher than in March 2007 and 9 percent higher than in March 2006.



Guest nights in the South Island were 1.6 million in March 2008, a 10 percent increase compared with March 2007 and a 16 percent increase compared with March 2006.

The trend for South Island guest nights has been increasing since April 2006. In March 2008, the trend level was 3 percent higher than in March 2007 and 7 percent higher than in March 2006.



Guest nights by region

In March 2008, eleven of the 12 regions recorded higher guest nights than in March 2007, led by the following regions:

- Canterbury (up 77,000 or 15 percent)
- Wellington (up 32,000 or 12 percent)
- Nelson/Marlborough/Tasman (up 31,000 or 14 percent)
- Otago (up 29,000 or 6 percent).

The only region to show a decrease was Waikato, down 5,000 or 2 percent.

Comparison with short-term overseas visitor arrival statistics

The *External Migration: March 2008* release shows that short-term overseas visitor arrivals to New Zealand in March 2008 were up 11,600 (5 percent) from March 2007. This followed an increase of 12,900 (5 percent) in February 2008 compared with February 2007.

The estimated average number of visitors who were in New Zealand during March 2008 was up 6 percent from March 2007.

New Zealand resident short-term departures for March 2008 were up 2,400 (2 percent) from March 2007. This followed an increase of 11,500 (12 percent) in February 2008 compared with February 2007.

Origin of guests

New Zealanders accounted for 1.9 million guest nights in March 2008. The Canterbury region had the highest number of domestic guest nights, followed by Auckland and Otago.

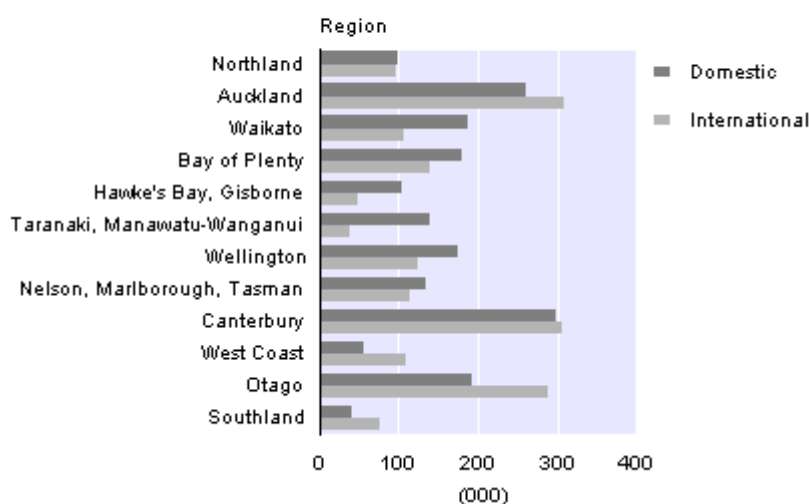
International visitors contributed 1.8 million guest nights in March 2008. The Auckland region had the highest number of international guest nights, followed by Canterbury and Otago.

In March 2008, New Zealanders contributed 52 percent of total guest nights. In the North Island, domestic guest nights made up a 57 percent share, whereas in the South Island, the proportion was 45 percent. Seven of the 12 regions had more domestic guest nights than international guest nights.

Domestic and International Guest Nights

By region

March 2008



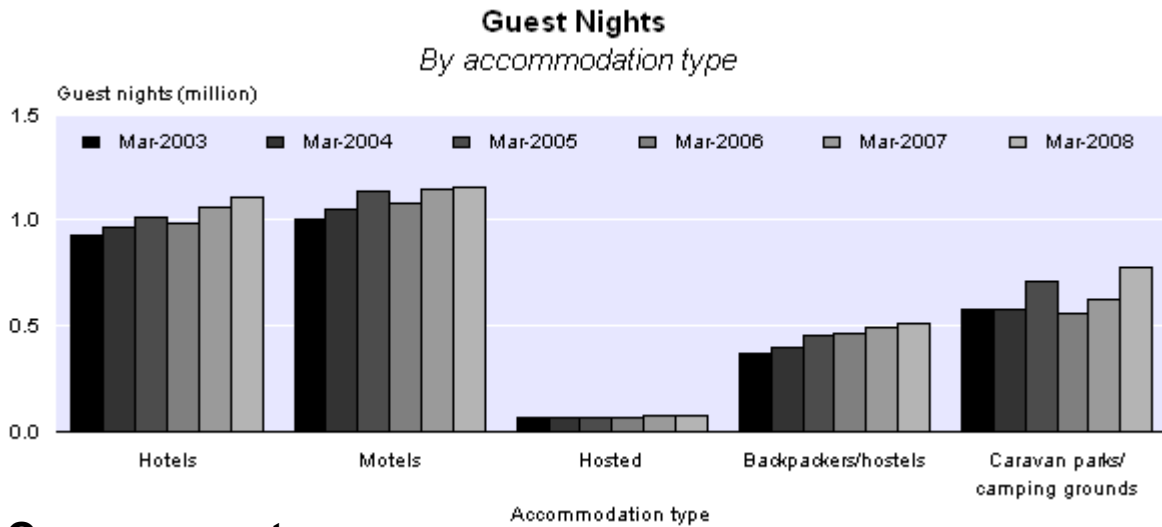
Survey change

From the November 2007 survey month, information on domestic and international guest nights is available on a monthly basis. Previous information on 'origin of guest breakdown by country' is no longer available. This is the first stage of changes being made following a review of the Accommodation Survey, which aims to balance the need for high-quality information against the need to reduce respondent load.

In March 2008, there was a response rate of 67 percent to the Accommodation Survey question on 'origin of guests'. Prior to the survey change, the response rate for this question ranged between 55 and 60 percent. Figures for those establishments that failed to respond have been imputed (see Non-response imputation). Such high levels of imputation can affect data quality, especially for regional statistics and/or statistics by accommodation type.

Guest nights by accommodation type

In March 2008, guest nights for all five accommodation types increased compared with March 2007. Caravan parks/camping grounds had the largest increase, up 148,000 or 24 percent, followed by hotels, up 48,000 or 5 percent. Backpackers/hostels increased 18,000 or 4 percent and reached its highest guest nights total for any month since the survey began in July 1996.



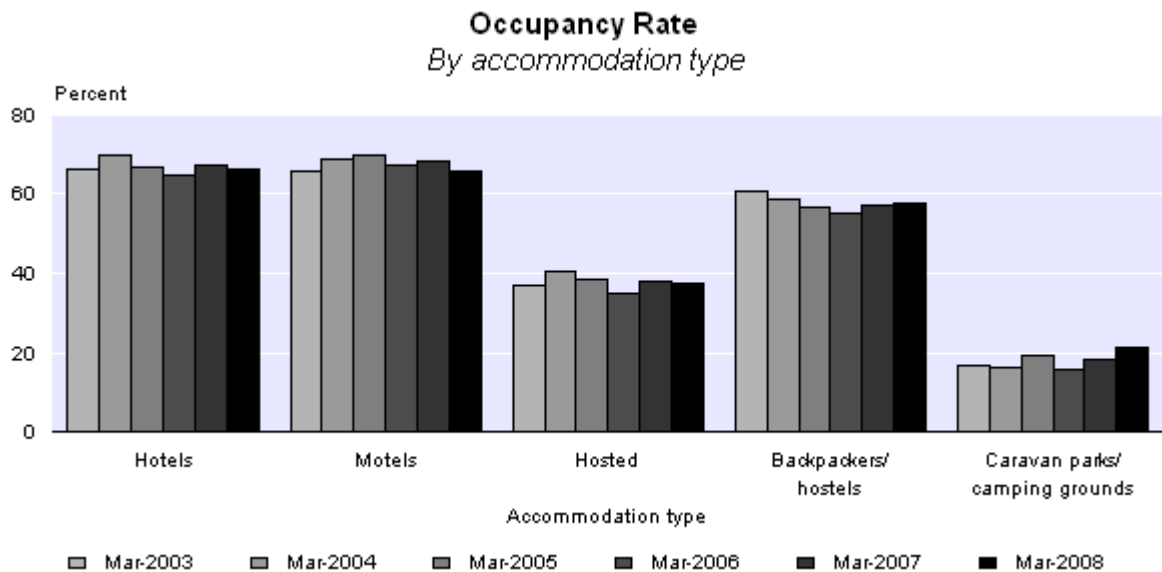
Occupancy rate

In March 2008, the occupancy rate, excluding caravan parks/camping grounds, was 62 percent compared with 64 percent in March 2007.

Accommodation capacity, excluding caravan parks/camping grounds, was 3 percent above the March 2007 level.

Hotels and motels had the highest occupancy rates (66 percent) of all the accommodation types in March 2008, followed by backpackers/hostels (58 percent).

Excluding the caravan parks/camping grounds category, the Wellington region had the highest occupancy rate (74 percent) in March 2008, followed by Auckland (69 percent).



Non-response imputation

When respondents do not answer questions in the Accommodation Survey, Statistics New Zealand estimates the missing information based on data from similar establishments in the same and/or similar areas. For more information, please refer to the Technical notes of this release or contact Statistics NZ.

Response rates by accommodation type for March 2008			
Accommodation type	Percentage of establishments responding to questions on guest nights, guest arrivals and stay unit nights	Percentage of the guest night estimate from establishments that responded to the question on guest nights	Percentage of the origin of guest estimate from establishments that responded to the questions on the origin of guests
Hotels	80	90	67
Motels	78	82	66
Hosted	81	84	68
Backpackers/hostels	79	85	60
Caravan parks/ camping grounds	81	87	71
Total	80	86	67

Survey sponsorship

The Accommodation Survey is a monthly survey undertaken by Statistics NZ and sponsored by the Ministry of Tourism.

For technical information contact:
Brylee Wayman or Tehseen Islam
Christchurch 03 964 8700

Email: info@stats.govt.nz

Next release ...

Accommodation Survey: April 2008 will be released on 12 June 2008.

Technical notes

Population

The target population for this survey is all 'geographic units' (called 'establishments' in this publication) that are classified as short-term (less than one month) commercial accommodation providers operating in New Zealand. In terms of the Australian and New Zealand Standard Industrial Classification (ANZSIC), the target population is taken from class 5710 (accommodation), and the part of class 5720 (pubs, taverns and bars) that also provides accommodation.

The survey frame is all short-term commercial accommodation-providing geographic units belonging to an economically significant 'enterprise'. Economic significance is generally determined as being GST registered and having a turnover of at least \$30,000 per annum.

Survey errors

This survey aims for 100 percent coverage of the population (a full census). In practice, however, an overall response rate of between 76 and 80 percent is usually achieved. The remaining units are given imputed values based upon the characteristics of similar establishments in the same or similar regions. Imputation introduces unknown errors into the estimates, and users of the data should bear this in mind. The size of these unknown errors is difficult to quantify.

Other errors occur for reasons such as respondent error, frame quality and errors in processing. While every effort is made to minimise these errors, they will still occur. It is not possible to quantify their effect.

Trend estimates

For any series, the survey estimates can be broken down into three components: trend, seasonal and irregular. While seasonally adjusted series have had the seasonal component removed, the trend series have had both the seasonal and the irregular components removed. Trend estimates reveal the underlying direction of movement in a series, and are likely to indicate turning points more accurately than seasonally adjusted estimates.

The accommodation trend series are calculated using the X-12-ARIMA seasonal adjustment package. They are based on optimal moving averages of the seasonally adjusted series, with an adjustment for outlying values. The X-12-ARIMA package is an updated version of X-11-ARIMA, developed by the U.S. Census Bureau.

The trend estimates towards the end of the series incorporate new data as it becomes available, and can therefore change as more observations are added to the series. Revisions can be particularly large if an observation is treated as an outlier in one month, but is found to be part of the underlying trend as further observations are added to the series. All trend estimates are subject to revisions each month, but normally only the last two or three estimates are likely to be substantially altered.

Trend estimates versus month-on-month comparisons

Trend estimates reveal the underlying direction of the movement in a series. In contrast, comparisons between one month and the same month in the previous year(s) do not take account of data recorded in between these periods, and are subject to one-off fluctuations. Reasons for fluctuations include changes in the timing of holidays, international crises, and large sporting and cultural events.

Seasonally adjusted estimates

The X-12-ARIMA package has been used to produce the seasonally adjusted estimates referred to in the Commentary text. Seasonal adjustment aims to eliminate the impact of regular seasonal events. These may be due to climatic effects (such as more guests staying in camping grounds during the summer) or calendar effects (such as holidays). This makes the data for adjacent months more comparable. All seasonally adjusted figures are subject to revision each month.

Further information about [seasonal adjustment](#) is available on the Statistics New Zealand website.

Classification of accommodation type

The predominant capacity provided determines the accommodation type. For instance, if a business provides both motel and camping ground accommodation, but the majority of its stay units are motel rooms, then it would be classified as a motel. The classification system used is the New Zealand Accommodation Classification, broadly defined below:

- Hotels: includes both hotels and resorts
- Motels: includes motor inns, apartments and motels
- Hosted: includes private hotels, guest houses, bed and breakfasts, and holiday farm (farmstay) accommodation
- Backpackers/hostels
- Caravan parks/camping grounds.

Further information on the classification system is available on request.

Origin of guests

From November 2007, information on total domestic and international guest nights will be available on a monthly basis but the breakdown by region or country will no longer be available.

Other definitions

Business frame

A register (maintained by Statistics NZ) of all economically significant businesses operating in New Zealand from which the survey population is drawn.

Establishment

The smallest statistical unit operating within a single physical location and owned by a single enterprise. The term is used to represent what is usually called the 'geographic unit' in other Statistics NZ publications.

Guest night

A guest night is equivalent to one guest spending one night at an establishment. For example, a motel with 15 guests spending two nights would report provision of 30 guest nights of accommodation.

Stay unit

The term used to describe the unit of accommodation that is available to be charged out to guests (for example a powered site in a caravan park, a bed in a backpackers, a room in a hotel or motel).

Capacity (stay unit nights available)

This is the basic measure of an establishment's accommodation capacity. It is defined as one stay unit multiplied by one night. For example, 10 units in a motel available for guest use (whether occupied or not) for the full 31 days in July would have an accommodation capacity of 310 stay unit nights.

Occupancy rate

This derived variable is calculated by dividing stay unit nights occupied by stay unit nights available. In the case of the motel above, if six of its 10 units were occupied every night in July, it would have $6 \times 31 = 186$ stay unit nights occupied, and its occupancy rate would be 60 percent.

Average length of stay

This derived variable is calculated by dividing total guest nights by total guest first nights.

More information

For more information, follow the [link](#) from the Technical notes of this release on the Statistics NZ website.

Confidentiality

Data collected and information contained in this publication must conform to the provisions of the Statistics Act 1975. This requires that published information maintains the confidentiality of individual respondents.

Copyright

Information obtained from Statistics NZ may be freely used, reproduced, or quoted unless otherwise specified. In all cases Statistics NZ must be acknowledged as the source.

Liability

While care has been used in processing, analysing and extracting information, Statistics NZ gives no warranty that the information supplied is free from error. Statistics NZ shall not be liable for any loss suffered through the use, directly or indirectly, of any information, product or service.

Timing

Timed statistical releases are delivered using postal and electronic services provided by third parties. Delivery of these releases may be delayed by circumstances outside the control of Statistics NZ. Statistics NZ accepts no responsibility for any such delays.

Tables

The following tables are printed with this Hot Off The Press and can also be downloaded from the Statistics New Zealand website in Excel format. If you do not have access to Excel, you may use the [Excel file viewer](#) to view, print and export the contents of the file.

1. Establishments, capacity, guest nights, occupancy rate and average stay, by accommodation type
2. Occupancy rate excluding caravan parks/camping grounds, by region
3. Total guest nights
4. Seasonally adjusted and trend guest nights, by accommodation type
5. North Island guest nights
6. South Island guest nights
7. Regional guest nights

Accommodation pivot tables

The Accommodation pivot tables provide more detailed information, breaking the survey variables down by regional tourism organisation areas and territorial authority areas. These tables can be downloaded from the Statistics New Zealand website.

- **Regional Tourism Organisation (RTO) Area by Accommodation Type (Type)**
Contains number of establishments, capacity, occupancy rates, guest nights, guest arrivals, length of stay and some ratios of these variables. The graph on the first worksheet will change to display the RTO and Type you select on the second worksheet. When printing the graph, select a cell rather than the graph so the heading will print.
- **Total Accommodation by Territorial Authority (TA)**
Contains number of establishments, capacity, occupancy rates, guest nights, guest arrivals, length of stay and some ratios of these variables.
- **Origin of Guests and Employment Information by Regional Tourism Organisation (RTO)**
Contains domestic and international guest night variables and employees.

Printing a selection of data in a spreadsheet

If you only want to print out some of the information in a spreadsheet, either select the pages you want in the print box, or hide the data you don't want to print by highlighting the columns or rows of data you don't want, then right click the mouse and select 'Hide'.

Accommodation Survey: March 2008

Table 1

Establishments, Capacity, Guest Nights, Occupancy Rate and Average Stay⁽¹⁾⁽²⁾⁽³⁾⁽⁵⁾
By accommodation type

Accommodation type	Series ref: ACSM	Month												
		2007										2008		
		Mar	Apr	May	Jun	Jul	Aug	Sep	Oct	Nov	Dec	Jan	Feb	Mar
Hotels/resorts														
Number of establishments	S1AA	568	569	572	568	571	572	574	572	579	579	575	577	580
Capacity (000)	S1AB	979	950	968	937	978	984	946	984	960	992	994	934	1,006
Guest nights (000)	S1AC	1,061	852	682	629	780	769	785	845	997	874	1,042	1,125	1,109
Occupancy rate (percent)	S1AD	67.3	53.1	47.5	44.1	48.3	49.3	50.4	53.4	65.2	50.8	59.2	72.0	66.2
Average stay (nights)	S1AE	1.8	1.8	1.8	1.8	2.0	1.9	1.9	1.8	1.8	1.8	1.8	1.8	1.8
Motels/motor inns/apartments														
Number of establishments	S1BA	1,769	1,769	1,767	1,755	1,756	1,774	1,777	1,791	1,801	1,810	1,810	1,817	1,822
Capacity (000)	S1BB	850	827	856	826	859	862	835	866	841	870	872	816	872
Guest nights (000)	S1BC	1,143	954	682	671	821	791	835	863	922	969	1,241	1,139	1,158
Occupancy rate (percent)	S1BD	68.1	55.2	44.4	42.4	46.5	47.0	49.6	51.2	57.8	51.6	62.6	69.9	65.7
Average stay (nights)	S1BE	1.8	1.8	1.8	1.8	1.9	2.0	1.9	1.8	1.8	1.8	1.9	1.8	1.8
Hosted accommodation⁽⁴⁾														
Number of establishments	S1CA	679	669	615	583	561	579	620	663	695	711	704	719	717
Capacity (000)	S1CB	104	99	96	89	90	92	95	104	103	109	108	104	111
Guest nights (000)	S1CC	74	46	23	21	28	29	30	38	55	65	81	90	78
Occupancy rate (percent)	S1CD	37.9	24.2	14.2	12.9	16.1	17.2	17.2	20.8	29.4	30.1	37.9	45.3	37.3
Average stay (nights)	S1CE	1.8	1.8	1.9	2.0	2.2	2.3	2.0	1.8	1.8	1.8	1.8	1.8	1.8
Backpackers/hostels														
Number of establishments	S1DA	445	441	430	414	411	412	426	445	446	451	448	448	447
Capacity (000)	S1DB	774	750	760	723	747	758	744	781	748	792	788	747	798
Guest nights (000)	S1DC	496	410	294	279	322	301	307	314	391	436	489	486	514
Occupancy rate (percent)	S1DD	57.3	49.1	35.5	35.2	38.6	35.5	37.3	35.7	47.0	48.5	56.5	58.2	57.6
Average stay (nights)	S1DE	1.9	1.9	2.0	2.0	2.2	2.1	2.1	2.0	2.0	1.9	1.9	1.9	1.9
Total excluding caravan parks/camping grounds														
Number of establishments	S1XA	3,461	3,448	3,384	3,320	3,299	3,337	3,397	3,471	3,521	3,551	3,537	3,561	3,566
Capacity (000)	S1XB	2,708	2,625	2,681	2,575	2,674	2,696	2,620	2,736	2,652	2,763	2,762	2,601	2,787
Guest nights (000)	S1XC	2,773	2,262	1,681	1,600	1,951	1,889	1,957	2,060	2,365	2,344	2,853	2,840	2,859
Occupancy rate (percent)	S1XD	63.5	51.5	41.9	40.0	43.9	43.6	45.2	46.4	56.3	49.6	58.7	66.3	62.4
Average stay (nights)	S1XE	1.8	1.8	1.8	1.9	2.0	2.0	1.9	1.8	1.8	1.8	1.9	1.8	1.8
Caravan parks/camping grounds														
Number of establishments	S1EA	416	412	396	393	387	386	393	407	416	419	418	413	413
Capacity (000)	S1EB	1,605	1,544	1,457	1,405	1,442	1,451	1,430	1,593	1,568	1,629	1,637	1,511	1,616
Guest nights (000)	S1EC	626	552	261	210	254	242	329	379	429	894	1,607	769	774
Occupancy rate (percent)	S1ED	18.2	15.6	9.3	7.4	8.1	8.0	10.6	11.0	13.1	23.5	36.7	23.6	21.4
Average stay (nights)	S1EE	1.8	1.9	1.8	1.9	2.0	1.9	1.8	1.8	1.7	2.1	2.6	1.9	1.9
Total														
Number of establishments	S19A	3,877	3,860	3,780	3,713	3,686	3,723	3,790	3,878	3,937	3,970	3,955	3,974	3,979
Capacity (000)	S19B	4,314	4,169	4,138	3,980	4,116	4,148	4,050	4,329	4,220	4,391	4,400	4,112	4,403
Guest nights (000)	S19C	3,399	2,814	1,942	1,809	2,205	2,131	2,286	2,439	2,795	3,239	4,461	3,609	3,633
Occupancy rate (percent)	S19D	46.7	38.2	30.4	28.5	31.4	31.1	33.0	33.4	40.3	39.9	50.5	50.6	47.4
Average stay (nights)	S19E	1.8	1.8	1.8	1.9	2.0	2.0	1.9	1.8	1.8	1.9	2.1	1.8	1.8

For footnotes, see end of table.

Accommodation Survey: March 2008

Table 1
continued

Establishments, Capacity, Guest Nights, Occupancy Rate and Average Stay⁽¹⁾⁽²⁾⁽³⁾⁽⁵⁾
By accommodation type

Accommodation type	Series ref: ACSM	Month												
		2007										2008		
		Mar	Apr	May	Jun	Jul	Aug	Sep	Oct	Nov	Dec	Jan	Feb	Mar
Percentage change from the same month of the previous year														
Hotels/resorts														
Number of establishments	S1AA	-1.0	-0.7	-0.2	-0.2	0.9	1.1	1.4	0.7	1.8	1.6	1.1	1.9	2.1
Capacity	S1AB	2.6	2.4	1.4	3.2	4.1	4.8	2.5	2.1	2.6	2.6	2.3	6.8	2.7
Guest nights	S1AC	7.3	2.5	2.1	4.3	7.4	5.0	2.4	-0.8	2.1	-1.3	4.0	8.1	4.5
Occupancy rate	S1AD	3.8	-1.0	0.5	-1.0	0.9	-1.9	-4.0	-4.0	-1.0	-3.9	0.6	-0.3	-1.6
Average stay (nights)	S1AE	5.2	1.8	1.4	-2.1	1.2	0.5	-1.1	1.2	5.0	1.4	-0.6	-1.4	0.4
Motels/motor inns/apartments														
Number of establishments	S1BA	3.0	3.1	3.6	3.1	3.1	3.4	2.6	2.6	3.0	3.0	2.8	2.7	3.0
Capacity	S1BB	4.3	4.8	5.2	5.0	5.5	5.0	4.4	3.8	4.0	3.7	3.8	6.5	2.6
Guest nights	S1BC	5.9	-0.1	7.1	5.0	3.0	6.6	2.6	-1.4	2.2	-0.3	0	1.2	1.3
Occupancy rate	S1BD	1.4	-3.0	1.6	-1.1	-2.6	0.5	-1.8	-3.0	-1.9	-3.2	-3.7	-3.1	-3.5
Average stay (nights)	S1BE	0.1	0.5	1.3	-0.3	2.0	0.6	1.7	0.1	0.2	3.0	1.1	-0.7	1.9
Hosted accommodation⁽⁴⁾														
Number of establishments	S1CA	3.0	2.5	2.8	1.4	1.6	2.3	4.4	5.6	5.6	7.2	4.5	5.7	5.6
Capacity	S1CB	-0.5	-1.3	-0.9	-1.7	-1.9	-2.2	2.3	2.7	3.0	4.3	3.1	9.3	6.5
Guest nights	S1CC	7.8	-4.7	5.0	-0.5	-12.6	-0.6	-5.6	-8.5	0.6	2.8	-0.8	1.2	6.0
Occupancy rate	S1CD	8.9	-4.2	9.1	-4.4	-10.5	2.7	-6.1	-9.2	-3.5	-4.1	-4.3	-6.7	-1.6
Average stay (nights)	S1CE	2.8	-1.3	-0.3	1.1	-3.4	0.1	-0.7	1.5	2.7	-1.5	0.3	-0.2	-0.5
Backpackers/hostels														
Number of establishments	S1DA	0.9	0.9	0.2	0.2	1.5	1.0	1.7	2.1	1.8	1.8	1.4	1.1	0.4
Capacity	S1DB	1.6	2.2	1.3	1.0	1.6	2.8	3.2	2.5	1.6	4.2	3.7	7.5	3.0
Guest nights	S1DC	6.7	6.9	6.6	11.2	12.1	8.8	10.3	-1.6	0.2	2.1	-2.9	0.7	3.7
Occupancy rate	S1DD	4.3	2.7	5.9	9.7	7.5	2.7	6.8	-4.9	-1.6	-2.7	-4.2	-4.5	0.6
Average stay (nights)	S1DE	3.9	2.4	-3.3	1.1	10.9	-0.2	2.8	3.7	2.2	1.7	1.2	0.9	0.5
Total excluding caravan parks/camping grounds														
Number of establishments	S1XA	2.1	2.1	2.4	1.8	2.3	2.5	2.6	2.8	3.2	3.4	2.7	3.0	3.0
Capacity	S1XB	2.7	2.9	2.5	2.9	3.6	4.1	3.3	2.8	2.8	3.5	3.2	7.0	2.9
Guest nights	S1XC	6.6	2.0	4.9	5.7	5.9	6.2	3.5	-1.3	1.8	-0.2	0.8	3.7	3.1
Occupancy rate	S1XD	3.4	-0.6	2.4	1.6	1.3	0.3	-0.9	-3.9	-1.5	-3.4	-2.3	-2.6	-1.7
Average stay (nights)	S1XE	2.7	1.3	0.6	-0.7	3.0	0.4	0.7	1.0	2.6	2.1	0.4	-0.8	1.0
Caravan parks/camping grounds														
Number of establishments	S1EA	-0.7	-1.7	-2.0	-1.8	-2.0	-2.0	-1.5	-0.5	1.2	0	0	-1.2	-0.7
Capacity	S1EB	-3.7	-4.0	-4.2	-2.8	-2.6	-1.9	-0.7	0	1.8	0.4	0.9	3.8	0.7
Guest nights	S1EC	11.5	4.7	11.6	11.1	6.0	8.8	7.3	-2.0	3.3	3.7	4.8	1.8	23.6
Occupancy rate	S1ED	13.8	7.0	17.3	12.0	4.0	6.9	9.0	-3.4	-1.4	7.7	2.6	-0.6	17.5
Average stay (nights)	S1EE	4.3	0.6	5.3	0.4	3.9	3.4	0.7	2.9	1.3	-2.5	-10.8	0.2	5.8
Total														
Number of establishments	S19A	1.8	1.7	1.9	1.4	1.8	2.0	2.2	2.4	3.0	3.1	2.4	2.5	2.6
Capacity	S19B	0.2	0.2	0	0.8	1.4	1.9	1.9	1.7	2.4	2.3	2.4	5.8	2.1
Guest nights	S19C	7.5	2.5	5.8	6.3	5.9	6.4	4.1	-1.4	2.0	0.9	2.2	3.3	6.9
Occupancy rate	S19D	6.4	2.1	5.7	4.1	3.3	2.5	1.2	-3.2	-1.2	-0.7	-0.8	-1.6	1.5
Average stay (nights)	S19E	3.0	1.2	1.2	-0.6	3.1	0.7	0.7	1.4	2.4	1.1	-2.4	-0.6	1.9

- (1) Establishments that are temporarily closed for more than 14 days during a month are excluded from the results.
- (2) Establishments primarily offering accommodation for periods of one month or more are excluded from the survey.
- (3) Monthly capacity shows the number of stay units available and is affected by the number of days in a month.
- (4) Hosted accommodation includes private hotels, guest houses, bed and breakfasts, and farmstays.
- (5) Percentage changes are calculated on unrounded figures.

Table 2

Occupancy Rate Excluding Caravan Parks/Camping Grounds⁽¹⁾
By region

Region	Series ref: ACSM	Month												
		2007										2008		
		Mar	Apr	May	Jun	Jul	Aug	Sep	Oct	Nov	Dec	Jan	Feb	Mar
Occupancy rate (percent)														
Northland	S2RAB	57.3	44.3	33.9	29.4	30.6	28.1	32.4	39.4	44.6	46.1	58.4	57.7	52.9
Auckland	S2RBB	71.4	56.8	52.1	52.8	52.2	53.8	54.8	56.6	69.5	53.9	62.9	73.3	69.5
Waikato	S2RCB	56.5	46.1	36.7	36.0	38.5	36.3	41.0	40.3	46.3	42.0	52.4	54.9	51.1
Bay of Plenty	S2RDB	63.5	55.8	46.2	41.1	45.4	38.9	48.0	50.5	56.0	51.1	60.3	63.3	58.3
Hawke's Bay/Gisborne	S2REB	63.5	48.6	38.9	37.9	37.7	37.3	40.5	46.4	47.3	49.2	59.0	62.2	61.3
Taranaki/Manawatu-Wanganui	S2RFB	48.9	39.4	35.6	33.2	39.6	43.3	43.7	36.2	40.0	33.4	38.4	45.9	47.8
Wellington	S2RGB	69.0	56.8	50.7	48.9	46.2	48.2	54.5	52.7	66.0	53.0	58.4	73.7	73.5
Nelson/Marlborough/Tasman	S2RHB	62.1	47.7	34.0	31.7	30.9	31.7	32.6	36.4	49.1	51.3	65.8	69.6	64.5
Canterbury	S2RIB	62.2	51.6	40.4	37.9	43.1	41.3	43.5	47.9	58.3	51.0	59.3	67.1	62.6
West Coast	S2RJB	57.3	45.3	28.5	24.6	26.6	25.4	28.4	36.0	47.6	45.7	57.5	65.3	61.8
Otago	S2RKB	68.3	57.6	41.6	40.6	61.2	61.1	51.3	46.6	58.9	54.4	63.7	74.0	66.8
Southland	S2RLB	61.4	43.8	31.5	24.4	24.5	25.6	28.3	33.9	50.5	47.6	55.8	67.0	59.0
New Zealand	S2RZB	63.5	51.5	41.9	40.0	43.9	43.6	45.2	46.4	56.3	49.6	58.7	66.3	62.4
Percentage change from the same month of the previous year														
Northland	S2RAB	4.3	-6.5	2.6	1.6	-1.7	-4.0	-4.6	-8.3	-10.0	-2.7	-7.3	-11.0	-7.8
Auckland	S2RBB	5.9	1.9	3.0	5.2	7.3	1.7	-0.1	-3.7	3.5	-4.6	1.3	3.0	-2.7
Waikato	S2RCB	1.6	-0.8	7.9	-1.6	3.3	5.3	6.3	0.2	-8.2	-9.9	-7.0	-5.3	-9.5
Bay of Plenty	S2RDB	3.7	0.4	4.4	-5.8	-0.6	-13.5	-0.4	-7.1	-6.7	-8.3	-5.2	-4.6	-8.2
Hawke's Bay/Gisborne	S2REB	1.4	-1.7	4.3	0	3.5	-3.2	-1.0	-1.8	-7.5	-0.7	-7.8	-3.8	-3.5
Taranaki/Manawatu-Wanganui	S2RFB	6.0	0.8	1.6	-2.2	-11.9	0.1	-8.8	-9.8	-1.2	-3.5	-9.4	-11.0	-2.4
Wellington	S2RGB	1.8	-2.9	-3.1	-3.6	-18.1	-6.0	-3.5	-10.2	0.6	0.7	1.1	-1.6	6.5
Nelson/Marlborough/Tasman	S2RHB	1.5	-1.5	5.3	2.1	-3.7	1.8	-0.4	-4.4	-4.7	-4.8	-2.3	-3.9	3.9
Canterbury	S2RIB	-0.1	-1.1	3.4	6.5	5.6	7.4	-1.2	-0.9	-0.7	-1.3	1.2	-4.1	0.7
West Coast	S2RJB	1.2	1.9	1.5	5.8	2.6	2.8	-0.8	-2.5	-3.7	-0.5	-1.8	-2.6	8.0
Otago	S2RKB	4.9	-1.2	-1.6	1.3	12.2	2.6	1.9	1.5	0.5	-2.3	-3.1	0.2	-2.2
Southland	S2RLB	5.8	-3.6	2.2	-0.9	-4.9	-5.6	-4.1	-10.6	0.5	2.4	-1.0	-2.4	-3.9
New Zealand	S2RZB	3.4	-0.6	2.4	1.6	1.3	0.3	-0.9	-3.9	-1.5	-3.4	-2.3	-2.6	-1.7

(1) More detailed information is available from regional tourism organisations or Statistics New Zealand.

Table 3

Total Guest Nights

	Actual series		Seasonally adjusted series ⁽¹⁾⁽²⁾		Trend series ⁽¹⁾⁽³⁾		
	Guest nights (000)	Change from same month previous year (percent)	Guest nights (000)	Change from previous month (percent)	Guest nights (000)	Change from previous month (percent)	
<i>Series ref: ACS</i>	<i>S4A9Z03</i>		<i>S4S9Z03</i>		<i>S4T9Z03</i>		
Month							
2005	Mar	3,389	11.1	2,788 R	8.6 R	2,617 R	0 R
	Apr	2,643	-1.7	2,531 R	-9.2 R	2,616 R	0 R
	May	1,808	0	2,580 R	1.9 R	2,614 R	-0.1 R
	Jun	1,829	7.1	2,798 R	8.5 R	2,612 R	-0.1 R
	Jul	2,169	2.7	2,680 R	-4.2 R	2,609 R	-0.1 R
	Aug	1,942	0.4	2,579 R	-3.8 R	2,607 R	-0.1 R
	Sep	2,129	-2.7	2,581 R	0.1 R	2,604 R	-0.1 R
	Oct	2,362	2.1	2,620 R	1.5 R	2,603 R	-0.1 R
	Nov	2,619	-1.3	2,591 R	-1.1 R	2,601 R	-0.1 R
	Dec	3,070	-3.3	2,567 R	-0.9 R	2,599 R	-0.1 R
2006	Jan	4,263	-1.7	2,622 R	2.1 R	2,598 R	0 R
	Feb	3,292	2.5	2,616 R	-0.2 R	2,598 R	0 R
	Mar	3,162	-6.7	2,578 R	-1.5 R	2,601 R	0.1 R
	Apr	2,746	3.9	2,638 R	2.3 R	2,606 R	0.2 R
	May	1,836	1.5	2,622 R	-0.6 R	2,614 R	0.3 R
	Jun	1,702	-6.9	2,601 R	-0.8 R	2,625 R	0.4 R
	Jul	2,082	-4.0	2,574 R	-1.0 R	2,637 R	0.5 R
	Aug	2,002	3.1	2,652 R	3.0 R	2,651 R	0.5 R
	Sep	2,197	3.2	2,660 R	0.3 R	2,667 R	0.6 R
	Oct	2,474	4.7	2,749 R	3.3 R	2,682 R	0.6 R
	Nov	2,740	4.6	2,713 R	-1.3 R	2,697 R	0.6 R
	Dec	3,210	4.6	2,705 R	-0.3 R	2,712 R	0.5 R
2007	Jan	4,364	2.4	2,691 R	-0.5 R	2,725 R	0.5 R
	Feb	3,493	6.1	2,763 R	2.7 R	2,735 R	0.4 R
	Mar	3,399	7.5	2,751 R	-0.5 R	2,744 R	0.3 R
	Apr	2,814	2.5	2,707 R	-1.6 R	2,748 R	0.2 R
	May	1,942	5.8	2,776 R	2.6 R	2,751 R	0.1 R
	Jun	1,809	6.3	2,764 R	-0.5 R	2,752 R	0 R
	Jul	2,205	5.9	2,729 R	-1.3 R	2,753 R	0.1 R
	Aug	2,131	6.4	2,820 R	3.3 R	2,756 R	0.1 R
	Sep	2,286	4.1	2,770 R	-1.8 R	2,761 R	0.2 R
	Oct	2,439	-1.4	2,706 R	-2.3 R	2,767 R	0.2 R
	Nov	2,795	2.0	2,765 R	2.2 R	2,774 R	0.3 R
	Dec	3,239	0.9	2,741 R	-0.9 R	2,784 R	0.4 R
2008	Jan	4,461	2.2	2,756 R	0.5 R	2,795 R	0.4 R
	Feb	3,609	3.3	2,846 R	3.3 R	2,808 R	0.5 R
	Mar	3,633	6.9	2,930	2.9	2,823	0.5

(1) All figures are subject to revision when the seasonal adjustment program is run each period.

(2) The seasonally adjusted series differs from the actual series in that the seasonal changes have been removed.

(3) The trend series differs from the actual series in that both the seasonal and irregular components have been removed.

Symbol:

R revised

Table 4

Seasonally Adjusted and Trend Guest Nights⁽¹⁾
By accommodation type

Accommodation type	Series ref: ACSM	Month												
		2007										2008		
		Mar	Apr	May	Jun	Jul	Aug	Sep	Oct	Nov	Dec	Jan	Feb	Mar
Seasonally adjusted guest nights (000)⁽²⁾														
Hotels/resorts	S4SAZ03	870 R	848 R	850 R	859 R	853 R	875 R	861 R	854 R	874 R	861 R	894 R	919 R	908
Motels/motor inns/apartments	S4SBZ03	921 R	900 R	945 R	920 R	903 R	956 R	921 R	904 R	927 R	910 R	905 R	934 R	932
Hosted accommodation ⁽³⁾	S4SCZ03	49 R	46 R	46 R	47 R	44 R	47 R	47 R	47 R	49 R	50 R	48 R	51 R	52
Backpackers/hostels	S4SDZ03	375 R	380 R	376 R	386 R	386 R	390 R	390 R	370 R	372 R	374 R	364 R	377 R	387
Caravan parks/camping grounds	S4SEZ03	538 R	538 R	571 R	540 R	539 R	559 R	553 R	530 R	539 R	543 R	545 R	567 R	662
Percentage change from previous month														
Hotels/resorts	S4SAZ03	2.1 R	-2.5 R	0.2 R	1.1 R	-0.7 R	2.6 R	-1.6 R	-0.8 R	2.4 R	-1.6 R	3.9 R	2.7 R	-1.1
Motels/motor inns/apartments	S4SBZ03	-0.4 R	-2.2 R	5.0 R	-2.7 R	-1.7 R	5.8 R	-3.7 R	-1.8 R	2.5 R	-1.8 R	-0.5 R	3.2 R	-0.2
Hosted accommodation ⁽³⁾	S4SCZ03	-2.3 R	-6.4 R	-0.6 R	2.3 R	-6.4 R	7.0 R	-0.8 R	0.3 R	6.0 R	0.4 R	-2.5 R	4.4 R	2.9
Backpackers/hostels	S4SDZ03	-0.1 R	1.5 R	-1.0 R	2.6 R	0 R	1.0 R	0.1 R	-5.1 R	0.5 R	0.4 R	-2.7 R	3.8 R	2.6
Caravan parks/camping grounds	S4SEZ03	-3.8 R	0 R	6.2 R	-5.4 R	-0.3 R	3.7 R	-1.0 R	-4.2 R	1.8 R	0.8 R	0.3 R	3.9 R	16.8
Guest nights trend (000)⁽⁴⁾														
Hotels/resorts	S4TAZ03	857 R	856 R	855 R	857 R	858 R	859 R	861 R	864 R	870 R	879 R	890 R	900 R	910
Motels/motor inns/apartments	S4TBZ03	919 R	921 R	921 R	921 R	921 R	921 R	920 R	920 R	920 R	920 R	920 R	921 R	922
Hosted accommodation ⁽³⁾	S4TCZ03	48 R	47 R	47 R	47 R	47 R	47 R	47 R	48 R	48 R	49 R	49 R	50 R	51
Backpackers/hostels	S4TDZ03	376 R	378 R	382 R	384 R	386 R	385 R	382 R	378 R	375 R	373 R	373 R	374 R	377
Caravan parks/camping grounds	S4TEZ03	542 R	544 R	545 R	546 R	546 R	546 R	547 R	548 R	550 R	553 R	556 R	560 R	564
Percentage change from previous month														
Hotels/resorts	S4TAZ03	-0.3 R	-0.2 R	0 R	0.1 R	0.2 R	0.1 R	0.2 R	0.4 R	0.7 R	1.0 R	1.2 R	1.1 R	1.1
Motels/motor inns/apartments	S4TBZ03	0.3 R	0.2 R	0.1 R	0 R	0 R	0 R	0 R	0 R	0 R	0 R	0 R	0.1 R	0.1
Hosted accommodation ⁽³⁾	S4TCZ03	-1.0 R	-1.0 R	-0.9 R	-0.6 R	-0.1 R	0.4 R	0.8 R	1.0 R	1.2 R	1.2 R	1.2 R	1.3 R	1.5
Backpackers/hostels	S4TDZ03	0.4 R	0.7 R	0.9 R	0.7 R	0.4 R	-0.1 R	-0.8 R	-1.1 R	-1.0 R	-0.5 R	0.1 R	0.4 R	0.6
Caravan parks/camping grounds	S4TEZ03	0.6 R	0.4 R	0.2 R	0.1 R	0 R	0 R	0.1 R	0.2 R	0.4 R	0.5 R	0.6 R	0.8 R	0.7

(1) All figures are subject to revision when the seasonal adjustment program is run each period.

(2) The seasonally adjusted series differs from the actual series in that the seasonal changes have been removed.

(3) Hosted accommodation includes private hotels, guest houses, bed and breakfasts, and farmstays.

(4) The trend series differs from the actual series in that both the seasonal and irregular components have been removed.

Symbol:

R revised

Table 5

North Island Guest Nights

	Actual series		Seasonally adjusted series ⁽¹⁾⁽²⁾		Trend series ⁽¹⁾⁽³⁾	
	Guest nights (000)	Change from same month previous year (percent)	Guest nights (000)	Change from previous month (percent)	Guest nights (000)	Change from previous month (percent)
<i>Series ref: ACS</i>	<i>S4A9R03</i>		<i>S4S9R03</i>		<i>S4T9R03</i>	
Month						
2005 Mar	1,890	10.5	1,602 R	8.0 R	1,528 R	0.1 R
Apr	1,546	0.3	1,508 R	-5.8 R	1,528 R	0 R
May	1,116	0.1	1,504 R	-0.3 R	1,527 R	-0.1 R
Jun	1,126	3.5	1,561 R	3.8 R	1,525 R	-0.2 R
Jul	1,336	3.9	1,599 R	2.4 R	1,521 R	-0.2 R
Aug	1,145	0.4	1,498 R	-6.3 R	1,516 R	-0.3 R
Sep	1,266	-1.2	1,495 R	-0.2 R	1,511 R	-0.3 R
Oct	1,410	1.6	1,519 R	1.6 R	1,506 R	-0.3 R
Nov	1,481	-0.7	1,496 R	-1.5 R	1,502 R	-0.3 R
Dec	1,743	-3.5	1,492 R	-0.3 R	1,498 R	-0.2 R
2006 Jan	2,397	-4.4	1,491 R	0 R	1,496 R	-0.1 R
Feb	1,788	2.2	1,508 R	1.1 R	1,497 R	0 R
Mar	1,769	-6.4	1,483 R	-1.7 R	1,500 R	0.2 R
Apr	1,555	0.6	1,524 R	2.8 R	1,506 R	0.4 R
May	1,117	0.1	1,510 R	-0.9 R	1,514 R	0.6 R
Jun	1,087	-3.4	1,506 R	-0.3 R	1,524 R	0.7 R
Jul	1,259	-5.7	1,510 R	0.3 R	1,535 R	0.7 R
Aug	1,195	4.4	1,559 R	3.3 R	1,547 R	0.8 R
Sep	1,327	4.8	1,560 R	0.1 R	1,559 R	0.8 R
Oct	1,489	5.6	1,607 R	3.0 R	1,569 R	0.7 R
Nov	1,571	6.1	1,588 R	-1.2 R	1,578 R	0.6 R
Dec	1,825	4.7	1,573 R	-1.0 R	1,585 R	0.4 R
2007 Jan	2,517	5.0	1,573 R	0 R	1,590 R	0.3 R
Feb	1,920	7.4	1,611 R	2.4 R	1,593 R	0.2 R
Mar	1,931	9.2	1,607 R	-0.2 R	1,595 R	0.1 R
Apr	1,607	3.3	1,578 R	-1.8 R	1,595 R	0 R
May	1,189	6.4	1,610 R	2.0 R	1,594 R	0 R
Jun	1,143	5.1	1,582 R	-1.8 R	1,594 R	0 R
Jul	1,301	3.4	1,563 R	-1.2 R	1,595 R	0 R
Aug	1,244	4.2	1,622 R	3.8 R	1,597 R	0.1 R
Sep	1,388	4.6	1,630 R	0.5 R	1,600 R	0.2 R
Oct	1,454	-2.3	1,566 R	-3.9 R	1,604 R	0.3 R
Nov	1,601	1.9	1,616 R	3.2 R	1,610 R	0.3 R
Dec	1,839	0.7	1,590 R	-1.6 R	1,616 R	0.4 R
2008 Jan	2,559	1.7	1,604 R	0.9 R	1,622 R	0.4 R
Feb	1,985	3.4	1,660 R	3.5 R	1,630 R	0.5 R
Mar	2,012	4.2	1,669	0.6	1,638	0.5

(1) All figures are subject to revision when the seasonal adjustment program is run each period.

(2) The seasonally adjusted series differs from the actual series in that the seasonal changes have been removed.

(3) The trend series differs from the actual series in that both the seasonal and irregular components have been removed.

Symbol:

R revised

Table 6

South Island Guest Nights

		Actual series		Seasonally adjusted series ⁽¹⁾⁽²⁾		Trend series ⁽¹⁾⁽³⁾	
		Guest nights (000)	Change from same month previous year (percent)	Guest nights (000)	Change from previous month (percent)	Guest nights (000)	Change from previous month (percent)
Series ref: ACS		S4A9S03		S4S9S03		S4T9S03	
Month							
2005	Mar	1,499	11.9	1,176 R	8.7 R	1,095 R	-0.2 R
	Apr	1,097	-4.6	1,025 R	-12.8 R	1,093 R	-0.2 R
	May	692	-0.2	1,076 R	5.0 R	1,092 R	-0.2 R
	Jun	703	13.4	1,250 R	16.1 R	1,090 R	-0.1 R
	Jul	834	1.0	1,090 R	-12.8 R	1,090 R	0 R
	Aug	797	0.3	1,081 R	-0.8 R	1,091 R	0.1 R
	Sep	863	-4.8	1,087 R	0.5 R	1,092 R	0.1 R
	Oct	952	2.8	1,102 R	1.4 R	1,094 R	0.2 R
	Nov	1,138	-2.0	1,095 R	-0.6 R	1,096 R	0.2 R
	Dec	1,327	-2.9	1,076 R	-1.7 R	1,098 R	0.1 R
2006	Jan	1,866	2.0	1,130 R	5.0 R	1,099 R	0.1 R
	Feb	1,504	2.8	1,106 R	-2.1 R	1,099 R	0 R
	Mar	1,393	-7.1	1,086 R	-1.8 R	1,100 R	0 R
	Apr	1,190	8.5	1,115 R	2.6 R	1,099 R	0 R
	May	718	3.8	1,115 R	0.1 R	1,100 R	0 R
	Jun	615	-12.5	1,087 R	-2.5 R	1,101 R	0.1 R
	Jul	823	-1.3	1,078 R	-0.9 R	1,102 R	0.2 R
	Aug	807	1.3	1,093 R	1.5 R	1,105 R	0.2 R
	Sep	870	0.8	1,099 R	0.5 R	1,109 R	0.3 R
	Oct	985	3.4	1,142 R	3.8 R	1,113 R	0.4 R
	Nov	1,168	2.7	1,125 R	-1.4 R	1,119 R	0.5 R
	Dec	1,385	4.4	1,132 R	0.6 R	1,127 R	0.6 R
2007	Jan	1,846	-1.1	1,118 R	-1.2 R	1,134 R	0.7 R
	Feb	1,573	4.6	1,153 R	3.1 R	1,142 R	0.7 R
	Mar	1,467	5.3	1,137 R	-1.4 R	1,149 R	0.6 R
	Apr	1,207	1.4	1,130 R	-0.6 R	1,154 R	0.5 R
	May	753	4.8	1,167 R	3.3 R	1,158 R	0.3 R
	Jun	666	8.4	1,175 R	0.6 R	1,160 R	0.2 R
	Jul	904	9.8	1,186 R	0.9 R	1,161 R	0.1 R
	Aug	886	9.8	1,199 R	1.1 R	1,162 R	0.1 R
	Sep	898	3.2	1,139 R	-5.1 R	1,162 R	0.1 R
	Oct	985	0	1,141 R	0.2 R	1,163 R	0.1 R
	Nov	1,194	2.1	1,150 R	0.8 R	1,165 R	0.2 R
	Dec	1,400	1.1	1,151 R	0.1 R	1,168 R	0.2 R
2008	Jan	1,902	3.0	1,151 R	0.1 R	1,172 R	0.3 R
	Feb	1,624	3.3	1,187 R	3.1 R	1,177 R	0.4 R
	Mar	1,621	10.4	1,252	5.5	1,181	0.4

(1) All figures are subject to revision when the seasonal adjustment program is run each period.

(2) The seasonally adjusted series differs from the actual series in that the seasonal changes have been removed.

(3) The trend series differs from the actual series in that both the seasonal and irregular components have been removed.

Symbol:

R revised

Table 7

Regional Guest Nights

Region	Series ref: ACSM	Month												
		2007										2008		
		Mar	Apr	May	Jun	Jul	Aug	Sep	Oct	Nov	Dec	Jan	Feb	Mar
Guest nights (000)														
Northland	S6RA03	184	144	90	76	79	76	93	116	129	215	355	203	195
Auckland	S6RB03	570	461	379	375	415	417	429	455	542	485	595	563	570
Waikato	S6RC03	299	249	164	163	186	172	196	200	214	267	405	287	294
Bay of Plenty	S6RD03	307	284	195	179	211	176	227	242	254	353	532	339	321
Hawke's Bay/Gisborne	S6RE03	140	119	76	72	77	74	82	104	97	153	217	147	154
Taranaki/Manawatu-Wanganui	S6RF03	165	134	103	105	146	151	156	132	134	145	198	165	179
Wellington	S6RG03	267	217	182	173	186	178	204	206	231	222	256	280	299
Nelson/Marlborough/Tasman	S6RH03	220	170	100	85	87	90	95	119	156	237	385	273	250
Canterbury	S6RI03	528	455	296	275	339	325	357	412	481	520	661	577	605
West Coast	S6RJ03	151	117	68	56	64	59	75	93	118	136	177	173	167
Otago	S6RK03	450	382	240	215	377	375	325	300	351	413	563	475	479
Southland	S6RL03	119	83	48	35	37	37	45	60	87	94	115	126	119
New Zealand	S6RZ03	3,399	2,814	1,942	1,809	2,205	2,131	2,286	2,439	2,795	3,239	4,461	3,609	3,633
Percentage change from the same month of the previous year⁽¹⁾														
Northland		5.6	-5.5	8.6	3.8	-7.2	2.3	0.3	-10.0	-6.5	2.5	-2.3	-1.3	6.3
Auckland		13.4	6.1	3.4	7.8	15.8	10.7	8.6	-0.8	9.9	0.9	5.8	8.0	0
Waikato		6.4	1.1	9.3	-0.4	-2.4	8.2	3.4	-2.8	-11.9	-6.9	-0.6	-4.7	-1.8
Bay of Plenty		11.4	6.5	9.9	4.2	2.2	-7.8	8.7	-0.2	4.4	3.1	4.4	6.7	4.5
Hawke's Bay/Gisborne		2.9	2.8	15.3	6.1	5.7	-0.7	4.5	-0.1	-2.5	-1.5	-6.9	8.1	10.0
Taranaki/Manawatu-Wanganui		7.0	4.4	-0.1	1.4	-5.6	0.8	-7.9	-6.5	8.3	3.7	4.1	-5.1	8.9
Wellington		8.7	2.4	6.1	8.4	-2.0	5.4	6.4	-1.2	0.1	4.9	2.5	6.3	11.9
Nelson/Marlborough/Tasman		4.7	6.0	14.6	12.7	6.3	13.2	1.9	-3.4	-0.7	2.1	3.6	7.1	14.0
Canterbury		1.8	1.2	1.6	8.9	9.5	14.5	3.1	2.5	6.0	2.8	7.1	3.3	14.6
West Coast		3.1	-1.4	7.2	8.9	9.7	9.0	8.3	-5.2	-2.2	0.3	-0.5	-0.4	10.7
Otago		9.7	1.3	4.0	5.5	11.9	6.2	2.6	0.6	0.8	-1.1	0.3	2.5	6.4
Southland		10.0	-2.3	7.0	11.4	1.9	1.7	3.2	-4.4	-1.2	0	-2.3	3.2	0.3
New Zealand		7.5	2.5	5.8	6.3	5.9	6.4	4.1	-1.4	2.0	0.9	2.2	3.3	6.9

(1) Percentage changes are calculated on unrounded figures.