



Hot Off The Press

LATEST STATISTICS FROM STATISTICS NEW ZEALAND



Embargoed until 10:45am – 18 January 2007

Accommodation Survey

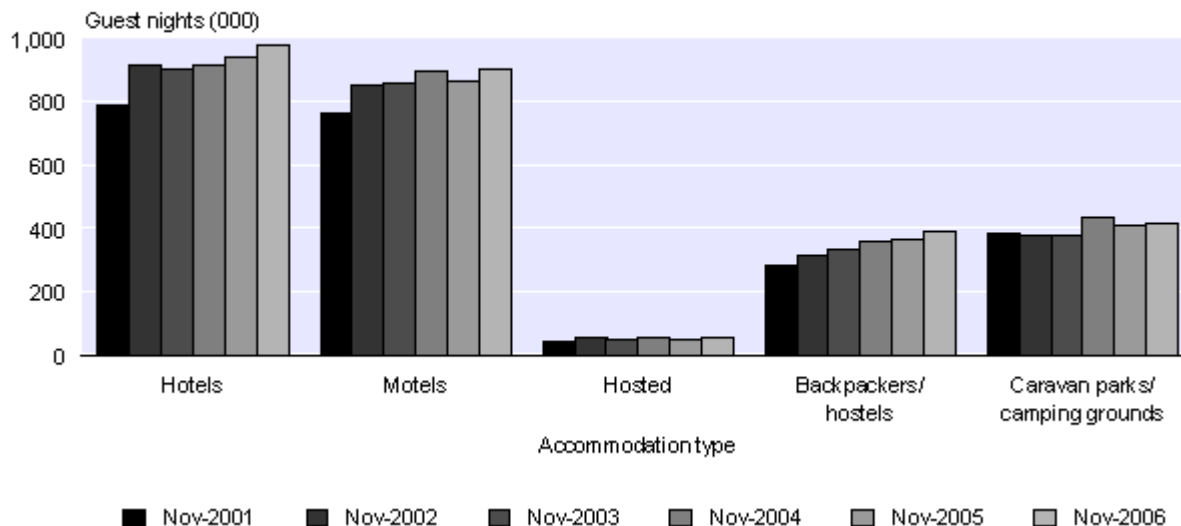
November 2006

Highlights

Compared with November 2005:

- Total guest nights were 5 percent higher.
- Guest nights were up 6 percent in the North Island and up 3 percent in the South Island.
- Eleven of the 12 regions recorded more guest nights.
- All five accommodation types recorded more guest nights.

Guest Nights
By accommodation type



Brian Pink
Government Statistician

18 January 2007
Cat 70.905 Set 06/07 – 104

There is a companion Media Release published – [Accommodation Survey: November 2006](#).

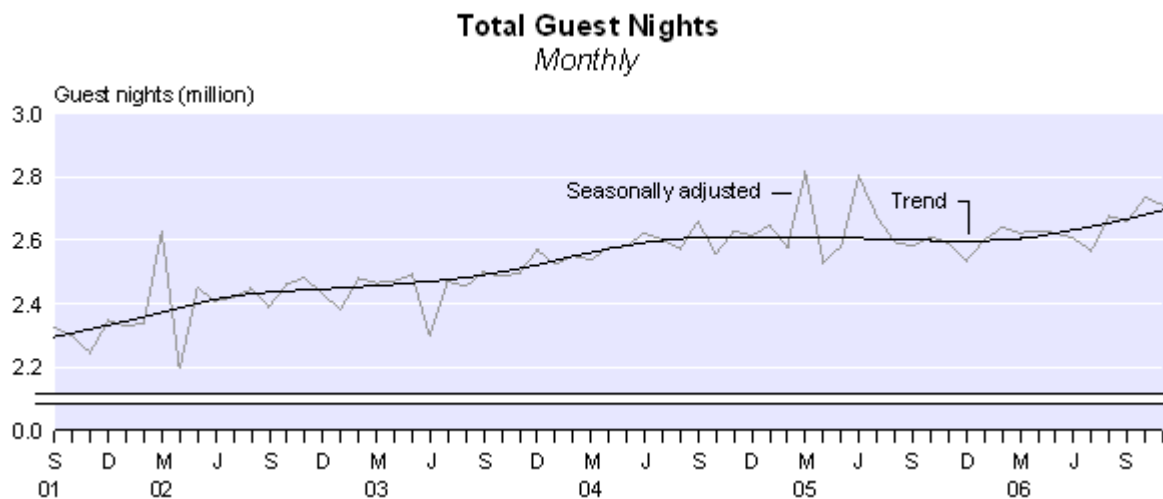
Commentary

Total guest nights

Total guest nights in short-term commercial accommodation were 2.7 million in November 2006, a 5 percent increase compared with November 2005 and a 3 percent increase compared with November 2004.

The trend in total guest nights has been increasing in recent months after a flat period since October 2004. However, the size of recent increases should be treated with caution as time-series analysis suggests that more data is required for the trend estimates to be confirmed. In November 2006, the trend level was 4 percent higher than in November 2005 and 3 percent higher than in November 2004.

The seasonally adjusted data for total guest nights suggests that the trend will continue to increase in the short term.



Comparison with short-term overseas visitor arrival statistics

The Hot Off The Press release *External Migration: November 2006* shows that short-term overseas visitor arrivals in New Zealand for November 2006 were up 15,200 (7 percent) on November 2005. This follows an increase of 10,400 (6 percent) in October 2006 compared with October 2005.

Similarly, the number of stay days for all visitor arrivals in November 2006 was up 7 percent on November 2005. This follows an increase of 6 percent in October 2006 compared with October 2005.

For visitors arriving in November 2006, the average length of stay was 21 days, the same as for those arriving in November 2005. The average length of stay was also 21 days for those visitors who arrived in October 2006 and 2005.

New Zealand resident short-term departures for November 2006 were up 3,400 (2 percent) from November 2005. This follows a decrease of 8,900 (6 percent) in October 2006 compared with October 2005.

Guest nights by island

Guest nights in the North Island were 1.6 million in November 2006, a 6 percent increase compared with November 2005. Guest nights in the South Island were 1.2 million, a 3 percent increase compared with November 2005.

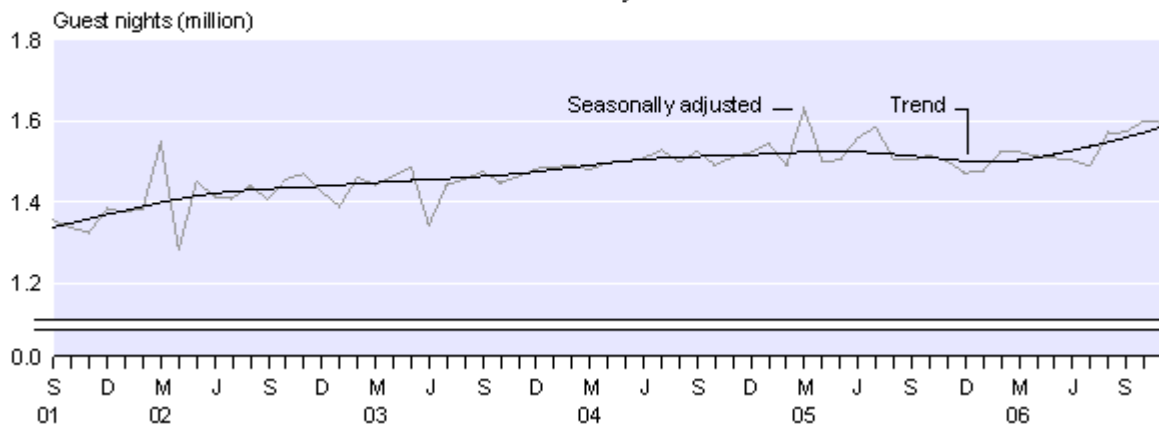
The trend in North Island guest nights has been increasing in recent months after a flat period. However, the size of recent increases should be treated with caution as time-series analysis suggests that more data is required for the trend estimates to be confirmed. In November 2006, the trend level was 5 percent higher than in both November 2005 and 2004.

The seasonally adjusted values for North Island guest nights have been higher than the trend values for the last four months. This suggests that the trend for North Island guest nights will continue to increase in the short term.

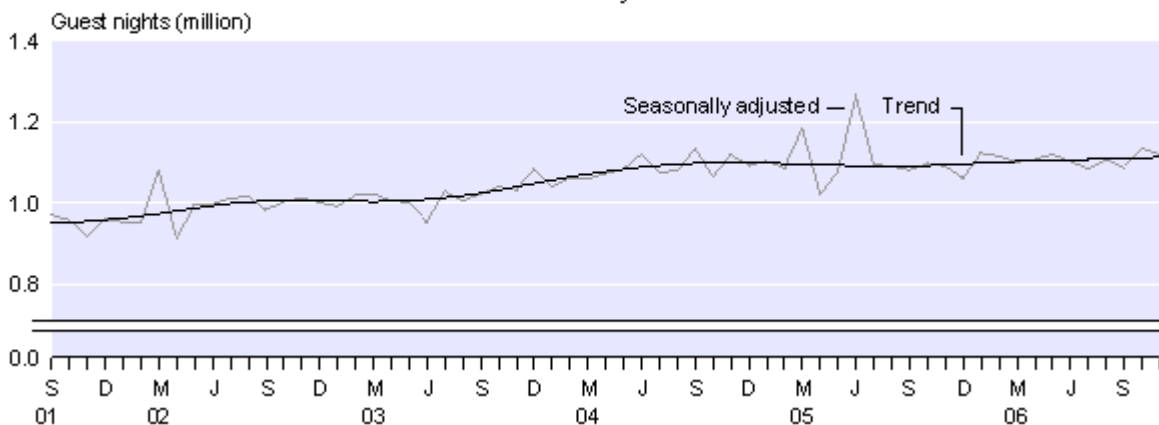
The trend in South Island guest nights has been flat recently following a period of increases that began in September 1997. In November 2006, the trend level was 2 percent higher than in November 2005 and 1 percent higher than in November 2004.

The seasonally adjusted data for South Island guest nights suggest that the trend will remain flat in the short term.

North Island Guest Nights
Monthly



South Island Guest Nights
Monthly



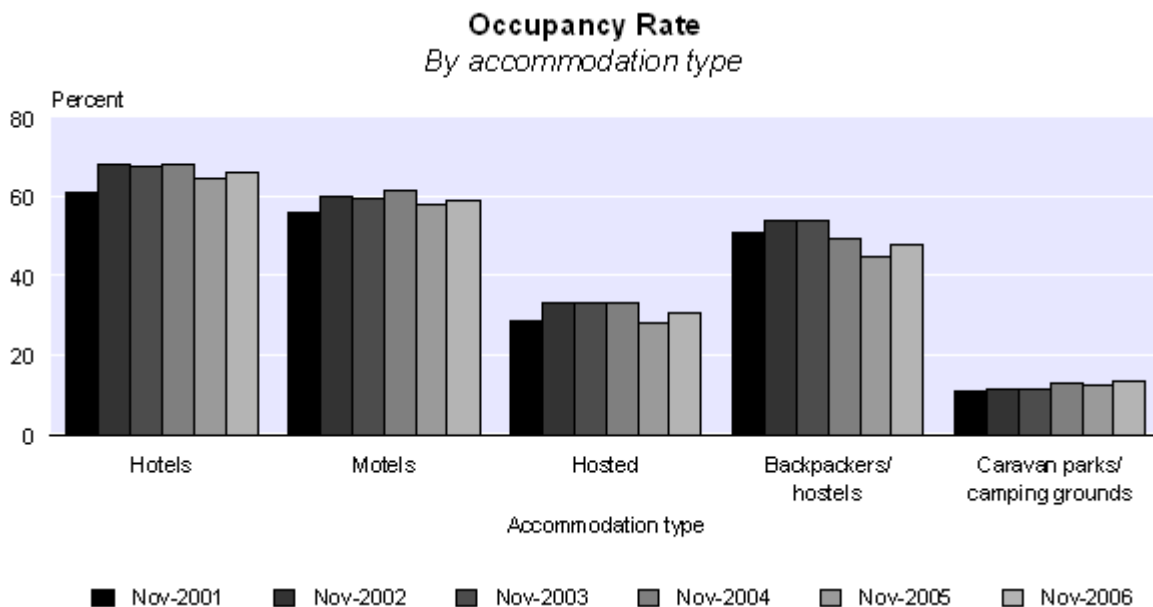
Occupancy rate

The November 2006 occupancy rate, excluding caravan parks/camping grounds, was 57 percent compared with 55 percent in November 2005.

Accommodation capacity, excluding caravan parks/camping grounds, was 2 percent above the November 2005 level.

Hotels (66 percent) recorded the highest occupancy rate of all the accommodation types in November 2006, followed by motels (59 percent) and backpackers/hostels (48 percent).

Excluding caravan parks/camping grounds, nine of the 12 regions recorded higher occupancy rates in November 2006 than in November 2005. Auckland (67 percent) had the highest occupancy rate, followed by the Wellington (66 percent) and Bay of Plenty (60 percent) regions.



Non-response imputation

When respondents do not answer questions in the Accommodation Survey, Statistics New Zealand estimates the missing information, based on data from similar establishments in the same and/or similar areas. For more information, please refer to the Technical Notes of this release or contact Statistics NZ.

Response rates by accommodation type for November 2006

Accommodation type	Percentage of establishments responding to questions on guest nights, guest arrivals and stay unit nights	Percentage of the guest night estimate from establishments that responded to the question on guest nights
Hotel	82 percent	93 percent
Motel	80 percent	84 percent
Hosted	86 percent	88 percent
Backpackers/hostels	83 percent	87 percent
Caravan parks/camping grounds	82 percent	88 percent
Total	82 percent	88 percent

Survey sponsorship

The Accommodation Survey is a monthly survey undertaken by Statistics NZ and sponsored by the Ministry of Tourism.

For technical information contact:
Tehseen Islam or Louise Holmes-Oliver
Christchurch 03 964 8700
Email: info@stats.govt.nz

Technical notes

Population

The target population for this survey is all 'geographic units' (called 'establishments' in this publication) that are classified as short-term (less than one month) commercial accommodation providers operating in New Zealand. In terms of the Australian and New Zealand Standard Industrial Classification (ANZSIC), the target population is taken from class 5710 (accommodation), and the part of class 5720 (pubs, taverns and bars) that also provides accommodation.

The survey frame is all short-term commercial accommodation-providing geographic units belonging to an economically significant 'enterprise'. Economic significance is generally determined as being GST registered and having a turnover of at least \$30,000 per annum.

Survey errors

This survey aims for 100 percent coverage of the population (ie a full census). However, in practice an overall response rate of between 76 and 80 percent is usually achieved. The remaining units are given imputed values, based upon the characteristics of similar establishments in the same or similar regions. Imputation introduces unknown errors into the estimates, and this should be borne in mind by users of the data. The size of these unknown errors is difficult to quantify.

Other errors occur for reasons such as respondent error, frame quality and errors in processing. While every effort is made to minimise these errors, they will still occur. It is not possible to quantify their effect.

Trend estimates

For any series, the survey estimates can be broken down into three components: trend, seasonal and irregular. While seasonally adjusted series have had the seasonal component removed, the trend series have had both the seasonal and the irregular components removed. Trend estimates reveal the underlying direction of movement in a series, and are likely to indicate turning points more accurately than seasonally adjusted estimates.

The accommodation trend series are calculated using the X-12-ARIMA seasonal adjustment package. They are based on optimal moving averages of the seasonally adjusted series, with an adjustment for outlying values. The X-12-ARIMA package is an updated version of X-11-ARIMA, developed by the US Bureau of the Census.

The trend estimates towards the end of the series incorporate new data as it becomes available, and can therefore change as more observations are added to the series. Revisions can be particularly large if an observation is treated as an outlier in one month, but is found to be part of the underlying trend as further observations are added to the series. All trend estimates are subject to revisions each month, but normally only the last two or three estimates are likely to be substantially altered.

Trend estimates versus month-on-month comparisons

Trend estimates reveal the underlying direction of the movement in a series. In contrast, comparisons between one month and the same month in the previous year(s) do not take account of data recorded between these periods, and are subject to one-off fluctuations. Reasons for fluctuations include changes in the timing of holidays, international crises, and large sporting and cultural events.

Seasonally adjusted estimates

The X-12-ARIMA package has been used to produce the seasonally adjusted estimates referred to in the Commentary text. Seasonal adjustment aims to eliminate the impact of regular seasonal events. These may be due to climatic effects (such as more guests staying in camping grounds during the summer) or calendar effects (such as holidays). This makes the data for adjacent months more comparable. All seasonally adjusted figures are subject to revision each month.

Further information about [seasonal adjustment](#) is available on the Statistics New Zealand website.

Classification of accommodation type

The predominant capacity provided determines the accommodation type. For instance, if a business provides both motel and camping ground accommodation, but the majority of its stay units are motel rooms, then it would be classified as a motel. The classification system used is the New Zealand Accommodation Classification, broadly defined below:

- Hotels: includes both hotels and resorts
- Motels: includes motor inns, apartments and motels
- Hosted: includes private hotels, guest houses, bed and breakfasts, and holiday farm (farmstay) accommodation
- Backpackers/hostels
- Caravan parks/camping grounds.

Further information on the classification system is available on request.

Classification of residence of guest

Every third month (January, April, July and October), the survey asks all respondents to classify their guests as coming from the following regions:

Domestic

Auckland
Wellington
Rest of North Island
Canterbury
Otago
Rest of South Island
Don't know

International

Australia
Japan
Korea
Other Asia
UK and Ireland
Germany
Other Europe
North America
Other
Don't know

Other definitions

Business frame

A register (maintained by Statistics NZ) of all economically significant businesses operating in New Zealand from which the survey population is drawn.

Establishment

The smallest statistical unit operating within a single physical location and owned by a single enterprise. The term is used to represent what is usually called the geographic unit in other Statistics NZ publications.

Guest night

A guest night is equivalent to one guest spending one night at an establishment. For example, a motel with 15 guests spending two nights would report provision of 30 guest nights of accommodation.

Stay unit

The term used to describe the unit of accommodation that is available to be charged out to guests (eg a powered site in a caravan park, a bed in a backpackers, a room in a hotel or motel).

Capacity (stay unit nights available)

This is the basic measure of an establishment's accommodation capacity. It is defined as one stay unit multiplied by one night. For example, 10 units in a motel available for guest use (whether occupied or not) for the full 31 days in July would have an accommodation capacity of 310 stay unit nights.

Occupancy rate

This derived variable is calculated by dividing stay unit nights occupied by stay unit nights available. In the case of the motel above, if six of its 10 units were occupied every night in July, it would have $6 \times 31 = 186$ stay unit nights occupied, and its occupancy rate would be 60 percent.

Average length of stay

This derived variable is calculated by dividing total guest nights by total guest first nights.

More information

For more information, follow the [link](#) from the Technical notes of this release on the Statistics NZ website.

Confidentiality

Data collected and information contained in this publication must conform to the provisions of the Statistics Act 1975. This requires that published information maintains the confidentiality of individual respondents.

Copyright

Information obtained from Statistics NZ may be freely used, reproduced, or quoted unless otherwise specified. In all cases Statistics NZ must be acknowledged as the source.

Liability

While care has been used in processing, analysing and extracting information, Statistics New Zealand gives no warranty that the information supplied is free from error. Statistics NZ shall not be liable for any loss suffered through the use, directly or indirectly, of any information, product or service.

Timing

Timed statistical releases are delivered using postal and electronic services provided by third parties. Delivery of these releases may be delayed by circumstances outside the control of Statistics NZ. Statistics NZ accepts no responsibility for any such delays.

Next release ...

Accommodation Survey: December 2006 will be released on 12 February 2007.

Statistics New Zealand: The first source of independent information for your key decisions.

Tables

The following tables can be downloaded from the Statistics NZ website in Excel 97 format. If you do not have access to Excel 97 or higher, you may use the [Excel file viewer](#) to view, print and export the contents of the file.

List of tables

1. Establishments, capacity, guest nights, occupancy rate and average stay, by accommodation type
2. Occupancy rate excluding caravan parks/camping grounds, by region
3. Total guest nights
4. Seasonally adjusted and trend guest nights, by accommodation type
5. North Island guest nights
6. South Island guest nights

Accommodation pivot tables

The Accommodation Pivot Tables provide more detailed information, breaking the survey variables down by regional tourism organisation areas and territorial authority areas.

- **Regional Tourism Organisation (RTO) Area by Accommodation Type (Type)**
Contains number of establishments, capacity, occupancy rates, guest nights, guest arrivals, length of stay and some ratios of these variables.

The graph on the first worksheet will change to display the RTO and Type you select on the second worksheet. When printing the graph, select a cell rather than the graph so the heading will print.

- **Territorial Authority (TA) by Total Accommodation**
Contains number of establishments, capacity, occupancy rates, guest nights, guest arrivals, length of stay and some ratios of these variables.
- **Origin of Guests and Employment Information by Regional Tourism Organisation (RTO)**
Contains domestic and international guest night variables and employees.

Printing a selection of data in a spreadsheet

If you only want to print out some of the information in a spreadsheet, either select the pages you want in the print box, or hide the data you don't want to print by highlighting the columns or rows of data you don't want, then right click the mouse and select 'Hide'.

Accommodation Survey: November 2006

Table 1

Establishments, Capacity, Guest Nights, Occupancy Rate and Average Stay⁽¹⁾⁽²⁾⁽³⁾
By accommodation type

Accommodation type	Series ref: ACSM	Month												
		2005		2006										
		Nov	Dec	Jan	Feb	Mar	Apr	May	Jun	Jul	Aug	Sep	Oct	Nov
Hotels/resorts														
Number of establishments	S1AA	580	576	576	577	574	573	573	569	566	566	566	568	569
Capacity (000)	S1AB	924	952	952	862	955	927	955	908	939	939	922	964	936
Guest nights (000)	S1AC	938	827	940	1,006	989	831	667	603	727	733	766	852	977
Occupancy rate (percent)	S1AD	64.2	51.6	55.4	71.3	64.9	53.6	47.2	44.6	47.9	50.3	52.5	55.7	65.8
Average stay (nights)	S1AE	1.7	1.7	1.8	1.7	1.7	1.7	1.8	1.8	2.0	1.9	1.8	1.8	1.7
Motels/motor inns/apartments														
Number of establishments	S1BA	1,699	1,713	1,715	1,714	1,717	1,715	1,706	1,703	1,703	1,716	1,732	1,745	1,748
Capacity (000)	S1BB	783	815	824	735	815	789	814	786	814	821	800	834	809
Guest nights (000)	S1BC	861	929	1,233	1,067	1,079	956	637	638	797	742	814	875	902
Occupancy rate (percent)	S1BD	58.1	52.5	64.6	71.4	67.1	57.0	43.7	42.9	47.8	46.8	50.5	52.8	58.9
Average stay (nights)	S1BE	1.7	1.8	1.9	1.8	1.8	1.8	1.8	1.8	1.9	2.0	1.8	1.8	1.8
Hosted accommodation⁽⁴⁾														
Number of establishments	S1CA	647	658	667	661	659	653	598	575	552	566	594	628	658
Capacity (000)	S1CB	99	103	105	95	105	101	97	91	91	94	93	101	100
Guest nights (000)	S1CC	50	61	82	84	68	48	21	21	32	29	31	42	55
Occupancy rate (percent)	S1CD	27.9	29.9	39.5	47.1	34.8	25.3	13.0	13.5	17.9	16.7	18.4	22.9	30.5
Average stay (nights)	S1CE	1.7	1.8	1.8	1.8	1.7	1.8	1.9	2.0	2.3	2.3	2.0	1.8	1.7
Backpackers/hostels														
Number of establishments	S1DA	435	442	437	440	441	437	429	413	405	408	419	436	438
Capacity (000)	S1DB	728	751	744	683	762	734	751	716	735	737	721	762	736
Guest nights (000)	S1DC	363	415	483	458	464	384	276	251	287	276	278	319	390
Occupancy rate (percent)	S1DD	44.6	49.7	57.4	59.1	54.9	47.8	33.6	32.1	35.9	34.5	34.9	37.5	47.7
Average stay (nights)	S1DE	1.9	1.9	1.8	1.8	1.9	1.9	2.1	2.0	2.0	2.1	2.0	1.9	1.9
Total excluding caravan parks/camping grounds														
Number of establishments	S1XA	3,361	3,389	3,395	3,392	3,391	3,378	3,306	3,260	3,226	3,256	3,311	3,377	3,413
Capacity (000)	S1XB	2,535	2,621	2,626	2,375	2,637	2,551	2,617	2,501	2,581	2,591	2,535	2,661	2,580
Guest nights (000)	S1XC	2,212	2,231	2,738	2,616	2,601	2,219	1,602	1,514	1,842	1,780	1,890	2,088	2,324
Occupancy rate (percent)	S1XD	55.3	50.5	58.2	66.8	61.5	51.9	40.9	39.3	43.4	43.5	45.6	48.3	57.1
Average stay (nights)	S1XE	1.8	1.8	1.8	1.8	1.8	1.8	1.8	1.9	1.9	2.0	1.9	1.8	1.8
Caravan parks/camping grounds														
Number of establishments	S1EA	409	418	420	421	419	419	404	400	395	394	399	409	411
Capacity (000)	S1EB	1,587	1,675	1,683	1,522	1,667	1,609	1,521	1,446	1,480	1,480	1,441	1,593	1,540
Guest nights (000)	S1EC	407	839	1,525	676	561	527	234	189	240	222	307	386	416
Occupancy rate (percent)	S1ED	12.6	19.9	33.4	20.2	16.0	14.5	8.0	6.6	7.8	7.5	9.7	11.4	13.3
Average stay (nights)	S1EE	1.7	2.2	3.0	1.9	1.7	1.9	1.8	1.9	1.9	1.9	1.8	1.7	1.7
Total														
Number of establishments	S19A	3,770	3,807	3,815	3,813	3,810	3,797	3,710	3,660	3,621	3,650	3,710	3,786	3,824
Capacity (000)	S19B	4,122	4,296	4,308	3,898	4,304	4,160	4,138	3,947	4,061	4,071	3,976	4,255	4,120
Guest nights (000)	S19C	2,619	3,070	4,263	3,292	3,162	2,746	1,836	1,702	2,082	2,002	2,197	2,474	2,740
Occupancy rate (percent)	S19D	38.8	38.5	48.5	48.6	43.9	37.4	28.8	27.3	30.4	30.4	32.6	34.5	40.7
Average stay (nights)	S19E	1.7	1.9	2.1	1.8	1.8	1.8	1.8	1.9	1.9	2.0	1.9	1.8	1.8

For footnotes, see end of table.

Accommodation Survey: November 2006

Table 1
continued

Establishments, Capacity, Guest Nights, Occupancy Rate and Average Stay⁽¹⁾⁽²⁾⁽³⁾
By accommodation type

Accommodation type	Series ref: ACSM	Month												
		2005		2006										
		Nov	Dec	Jan	Feb	Mar	Apr	May	Jun	Jul	Aug	Sep	Oct	Nov
Percentage change from the same month of the previous year														
Hotels/resorts														
Number of establishments	S1AA	5.1	4.0	2.1	2.3	1.2	1.8	2.0	1.2	0.2	0.2	-0.5	-0.9	-1.9
Capacity	S1AB	8.7	7.9	5.9	5.9	4.7	4.8	2.2	-0.2	-0.3	-0.4	0.9	1.4	1.2
Guest nights	S1AC	2.9	-2.3	-3.0	2.0	-2.7	-0.7	0.2	-7.4	-6.3	2.5	2.4	6.2	4.2
Occupancy rate	S1AD	-5.8	-7.6	-7.2	-3.7	-2.9	-6.8	-0.3	-4.5	-4.6	3.7	0.3	3.0	2.5
Average stay (nights)	S1AE	0.5	1.8	-5.2	2.6	-2.0	0.3	-0.2	-0.7	-1.5	0.3	0.4	3.7	1.5
Motels/motor inns/apartments														
Number of establishments	S1BA	1.7	1.9	2.9	2.0	2.0	1.5	1.1	2.0	1.7	2.6	2.5	3.0	2.9
Capacity	S1BB	1.6	2.2	5.3	3.2	2.7	2.0	2.3	2.6	2.4	2.8	2.9	3.1	3.3
Guest nights	S1BC	-3.8	-4.6	0.5	1.0	-4.8	3.3	1.9	-3.3	-2.7	3.9	3.1	2.6	4.8
Occupancy rate	S1BD	-5.2	-6.1	-3.9	-2.9	-3.5	-3.0	0.3	-5.8	-4.0	1.3	0.4	-0.3	1.5
Average stay (nights)	S1BE	0.4	0.3	1.3	-0.3	-0.6	2.6	1.0	1.2	1.3	3.5	-0.5	0.9	2.1
Hosted accommodation⁽⁴⁾														
Number of establishments	S1CA	13.3	13.1	11.5	7.5	5.3	8.7	4.0	2.1	4.5	3.1	4.4	2.3	1.7
Capacity	S1CB	6.1	8.5	11.0	8.8	7.5	9.4	5.4	2.2	5.6	5.0	5.0	4.4	0.9
Guest nights	S1CC	-9.8	-7.4	6.2	9.0	-3.7	13.8	-2.4	-13.7	5.1	-1.1	7.1	9.0	9.8
Occupancy rate	S1CD	-15.7	-15.0	-4.9	-0.4	-9.8	0.9	-6.5	-12.5	3.2	-2.5	2.4	7.3	9.3
Average stay (nights)	S1CE	2.2	-5.1	3.7	2.4	0.7	0.7	8.5	6.4	3.6	10.2	-3.1	2.4	0.9
Backpackers/hostels														
Number of establishments	S1DA	10.7	11.6	9.0	8.9	7.6	6.6	7.8	4.0	3.1	2.0	1.2	0.7	0.7
Capacity	S1DB	10.9	10.1	7.2	7.8	7.4	7.0	7.5	5.9	2.3	1.7	1.0	1.8	1.0
Guest nights	S1DC	1.0	4.6	1.0	5.3	2.0	4.9	1.8	-7.4	-3.4	4.7	6.7	8.8	7.3
Occupancy rate	S1DD	-9.6	-2.4	-5.8	-3.5	-3.3	1.8	-5.2	-12.6	-1.9	3.5	5.6	7.2	7.0
Average stay (nights)	S1DE	7.4	1.4	-1.3	2.3	0.1	-1.2	7.4	5.3	-1.6	0.7	0	0.8	-0.3
Total excluding caravan parks/camping grounds														
Number of establishments	S1XA	5.5	5.5	5.1	4.0	3.2	3.5	2.6	2.2	2.1	2.2	2.2	1.9	1.5
Capacity	S1XB	6.9	6.7	6.3	5.7	4.9	4.7	3.8	2.5	1.5	1.4	1.7	2.2	1.8
Guest nights	S1XC	-0.5	-2.2	-0.5	2.4	-2.8	2.2	1.1	-5.8	-4.1	3.4	3.4	5.1	5.1
Occupancy rate	S1XD	-6.8	-6.0	-5.7	-3.4	-3.5	-3.4	-1.6	-7.2	-3.8	2.6	1.5	2.8	3.4
Average stay (nights)	S1XE	1.5	1.0	-1.4	1.3	-1.0	1.1	1.6	1.1	-0.2	1.8	-0.1	2.1	1.5
Caravan parks/camping grounds														
Number of establishments	S1EA	1.0	1.5	1.9	2.7	1.9	4.2	2.5	2.0	3.1	3.7	2.0	1.2	0.5
Capacity	S1EB	0.6	0.1	0.8	1.4	1.2	2.0	-0.1	-1.0	-0.4	0.3	-0.8	-2.0	-2.9
Guest nights	S1EC	-5.4	-6.0	-3.9	2.9	-21.3	11.5	4.6	-14.9	-3.2	0.8	1.9	2.9	2.1
Occupancy rate	S1ED	-3.7	-8.0	-2.8	-0.6	-18.1	9.2	8.6	-10.2	-0.8	5.9	5.2	7.6	5.7
Average stay (nights)	S1EE	-1.2	-1.7	0.5	0.1	-8.9	2.7	-0.4	-0.1	0.4	-1.8	-2.0	-1.6	-1.3
Total														
Number of establishments	S19A	5.0	5.0	4.8	3.8	3.1	3.6	2.6	2.1	2.2	2.4	2.1	1.8	1.4
Capacity	S19B	4.4	4.0	4.0	4.0	3.5	3.6	2.3	1.2	0.8	1.0	0.8	0.6	0
Guest nights	S19C	-1.3	-3.3	-1.7	2.5	-6.7	3.9	1.5	-6.9	-4.0	3.1	3.2	4.7	4.6
Occupancy rate	S19D	-4.9	-5.3	-4.3	-2.0	-5.1	-1.1	0.4	-6.6	-3.1	3.2	2.5	4.5	4.9
Average stay (nights)	S19E	1.1	0.2	-1.3	1.1	-2.6	1.4	1.3	1.0	-0.1	1.4	-0.4	1.5	1.0

- (1) Establishments that are temporarily closed for more than 14 days during a month are excluded from the results.
(2) Establishments primarily offering accommodation for periods of one month or more are excluded from the survey.
(3) Monthly capacity shows the number of stay units available and is affected by the number of days in a month.
(4) Hosted accommodation includes private hotels, guest houses, bed and breakfasts, and farmstays.

Table 2

Occupancy Rate Excluding Caravan Parks/Camping Grounds⁽¹⁾
By region

Region	Series ref: ACSM	Month												
		2005		2006										
		Nov	Dec	Jan	Feb	Mar	Apr	May	Jun	Jul	Aug	Sep	Oct	Nov
Occupancy rate (percent)														
Northland	S2RAB	47.3	47.9	61.6	63.2	55.0	47.3	33.1	29.0	31.1	29.2	34.0	43.0	49.6
Auckland	S2RBB	64.7	55.8	57.6	69.8	67.4	55.7	50.5	50.2	48.6	53.0	54.9	58.8	67.2
Waikato	S2RCB	47.0	44.2	53.2	56.3	55.7	46.4	34.0	36.6	37.3	34.5	38.6	40.2	50.5
Bay of Plenty	S2RDB	59.1	54.5	62.5	68.6	61.3	55.5	44.3	43.6	45.6	45.0	48.2	54.4	60.0
Hawke's Bay/Gisborne	S2REB	46.9	47.1	58.8	63.9	62.7	49.4	37.2	37.9	36.5	38.5	40.9	47.2	51.1
Taranaki/Manawatu-Wanganui	S2RFB	41.7	35.9	40.9	46.4	46.2	39.1	35.0	33.9	44.9	43.2	47.9	40.2	40.5
Wellington	S2RGB	61.9	50.4	52.5	70.4	67.8	58.6	52.3	50.8	56.3	51.3	56.5	58.7	65.6
Nelson/Marlborough/Tasman	S2RHB	49.3	50.6	67.1	70.6	61.1	48.4	32.3	31.0	32.1	31.2	32.7	38.0	51.6
Canterbury	S2RIB	57.2	50.7	59.5	68.9	62.2	52.2	39.1	35.6	40.8	38.5	44.0	48.3	58.7
West Coast	S2RJB	49.8	46.5	58.7	64.9	56.6	44.5	28.1	23.3	25.9	24.7	28.7	36.9	49.5
Otago	S2RKB	56.6	57.2	65.3	75.8	65.1	58.3	42.3	40.1	54.5	59.6	50.3	45.9	58.6
Southland	S2RLB	53.0	45.6	59.1	68.8	58.0	45.4	30.8	24.7	25.7	27.2	29.5	37.9	50.3
New Zealand	S2RZB	55.3	50.5	58.2	66.8	61.5	51.9	40.9	39.3	43.4	43.5	45.6	48.3	57.1
Percentage change from the same month of the previous year														
Northland	S2RAB	-3.2	-1.6	-1.5	2.7	-2.7	8.3	-1.1	3.7	3.2	-0.5	2.5	14.0	4.8
Auckland	S2RBB	-6.2	-6.0	-11.0	-7.8	-4.4	-10.3	-3.2	-2.9	-12.3	4.8	1.8	5.2	3.7
Waikato	S2RCB	-2.0	-1.8	-0.2	-1.2	1.3	-3.3	-3.1	-4.4	-4.9	0.9	0.1	-2.2	7.3
Bay of Plenty	S2RDB	-4.1	-3.0	-7.3	0.7	-1.8	-0.4	-3.1	-7.9	-6.3	9.2	7.8	3.8	1.6
Hawke's Bay/Gisborne	S2REB	-8.9	-11.2	-9.3	-0.2	2.3	-3.8	-3.6	-0.5	-4.8	4.5	-0.5	1.8	8.9
Taranaki/Manawatu-Wanganui	S2RFB	-7.0	-1.8	-2.1	-10.1	-1.9	-3.6	3.8	-9.6	15.1	0.2	7.9	-2.6	-2.9
Wellington	S2RGB	-7.9	-6.2	-7.0	-5.7	-5.7	-8.6	-3.1	-6.6	1.1	3.9	1.3	6.0	6.0
Nelson/Marlborough/Tasman	S2RHB	-9.8	-7.6	-5.3	-1.7	-6.5	-0.5	-6.6	-10.9	-1.3	-4.5	-2.8	-0.9	4.7
Canterbury	S2RIB	-10.4	-11.9	-6.8	-5.8	-6.2	-6.6	-4.2	-20.2	-3.9	-3.0	1.7	-1.6	2.6
West Coast	S2RJB	-6.9	-5.8	0.2	1.1	-2.7	4.8	-1.0	-11.2	-0.7	-0.4	-0.3	0.8	-0.7
Otago	S2RKB	-6.6	-1.6	-2.0	2.0	-1.0	5.7	5.0	-2.2	-3.7	5.8	-3.1	3.9	3.5
Southland	S2RLB	-8.4	-15.3	-4.2	-8.4	-11.6	-4.4	3.9	-6.3	-2.7	-3.8	-3.2	2.5	-5.1
New Zealand	S2RZB	-6.8	-6.0	-5.7	-3.4	-3.5	-3.4	-1.6	-7.2	-3.8	2.6	1.5	2.8	3.4

(1) More detailed information is available from regional tourism organisations or Statistics New Zealand.

Table 3

Total Guest Nights

	Actual series		Seasonally adjusted series ⁽¹⁾⁽²⁾		Trend series ⁽¹⁾⁽³⁾		
	Guest nights (000)	Change from same month previous year (percent)	Guest nights (000)	Change from previous month (percent)	Guest nights (000)	Change from previous month (percent)	
<i>Series ref: ACS</i>	<i>S4A9Z03</i>		<i>S4S9Z03</i>		<i>S4T9Z03</i>		
Month							
2003	Nov	2,515	0.6	2,495 R	0.3 R	2,511 R	0.4 R
	Dec	3,132	5.4	2,568 R	2.9 R	2,522 R	0.5 R
2004	Jan	4,154	5.4	2,525 R	-1.7 R	2,535 R	0.5 R
	Feb	3,166	3.1	2,551 R	1.0 R	2,549 R	0.5 R
	Mar	3,050	3.4	2,537 R	-0.5 R	2,561 R	0.5 R
	Apr	2,690	4.1	2,577 R	1.6 R	2,573 R	0.4 R
	May	1,808	3.9	2,581 R	0.2 R	2,583 R	0.4 R
	Jun	1,707	14.7	2,622 R	1.6 R	2,592 R	0.3 R
	Jul	2,111	5.6	2,601 R	-0.8 R	2,599 R	0.3 R
	Aug	1,935	4.4	2,573 R	-1.1 R	2,605 R	0.2 R
	Sep	2,187	6.8	2,658 R	3.3 R	2,609 R	0.1 R
	Oct	2,314	2.7	2,556 R	-3.9 R	2,611 R	0.1 R
	Nov	2,652	5.5	2,629 R	2.9 R	2,612 R	0 R
	Dec	3,174	1.3	2,615 R	-0.5 R	2,612 R	0 R
2005	Jan	4,338	4.4	2,646 R	1.2 R	2,611 R	0 R
	Feb	3,212	1.5	2,579 R	-2.5 R	2,611 R	0 R
	Mar	3,389	11.1	2,814 R	9.1 R	2,611 R	0 R
	Apr	2,643	-1.7	2,528 R	-10.1 R	2,610 R	0 R
	May	1,808	0	2,580 R	2.1 R	2,608 R	-0.1 R
	Jun	1,829	7.1	2,804 R	8.7 R	2,606 R	-0.1 R
	Jul	2,169	2.7	2,676 R	-4.6 R	2,604 R	-0.1 R
	Aug	1,942	0.4	2,593 R	-3.1 R	2,601 R	-0.1 R
	Sep	2,129	-2.7	2,582 R	-0.4 R	2,600 R	-0.1 R
	Oct	2,362	2.1	2,610 R	1.1 R	2,599 R	0 R
	Nov	2,619	-1.3	2,591 R	-0.8 R	2,598 R	0 R
	Dec	3,070	-3.3	2,533 R	-2.2 R	2,598 R	0 R
2006	Jan	4,263	-1.7	2,600 R	2.6 R	2,599 R	0 R
	Feb	3,292	2.5	2,641 R	1.6 R	2,601 R	0.1 R
	Mar	3,162	-6.7	2,623 R	-0.6 R	2,606 R	0.2 R
	Apr	2,746	3.9	2,630 R	0.2 R	2,613 R	0.3 R
	May	1,836	1.5	2,624 R	-0.2 R	2,622 R	0.4 R
	Jun	1,702	-6.9	2,607 R	-0.7 R	2,633 R	0.4 R
	Jul	2,082	-4.0	2,567 R	-1.5 R	2,643 R	0.4 R
	Aug	2,002	3.1	2,677 R	4.3 R	2,655 R	0.4 R
	Sep	2,197	3.2	2,659 R	-0.7 R	2,667 R	0.5 R
	Oct	2,474	4.7	2,736 R	2.9 R	2,681 R	0.5 R
	Nov	2,740	4.6	2,712	-0.9	2,695	0.5

(1) All figures are subject to revision when the seasonal adjustment program is run each period.

(2) The seasonally adjusted series differs from the actual series in that the seasonal changes have been removed.

(3) The trend series differs from the actual series in that both the seasonal and irregular components have been removed.

Symbol:

R revised

Table 4

Seasonally Adjusted and Trend Guest Nights⁽¹⁾
By accommodation type

Accommodation type	Series ref: ACSM	Month													
		2005		2006											
		Nov	Dec	Jan	Feb	Mar	Apr	May	Jun	Jul	Aug	Sep	Oct	Nov	
Seasonally adjusted guest nights (000)⁽²⁾															
Hotels/resorts	S4SAZ03	825 R	797 R	810 R	835 R	818 R	823 R	830 R	827 R	797 R	833 R	835 R	855 R	861	
Motels/motor inns/apartments	S4SBZ03	865 R	859 R	896 R	889 R	888 R	885 R	889 R	877 R	866 R	907 R	892 R	914 R	908	
Hosted accommodation ⁽³⁾	S4SCZ03	45 R	46 R	49 R	50 R	47 R	48 R	42 R	46 R	48 R	46 R	48 R	50 R	49	
Backpackers/hostels	S4SDZ03	344 R	352 R	359 R	360 R	359 R	353 R	347 R	349 R	342 R	360 R	357 R	372 R	370	
Caravan parks/camping grounds	S4SEZ03	516 R	488 R	504 R	509 R	499 R	513 R	525 R	496 R	515 R	530 R	528 R	549 R	525	
Percentage change from previous month															
Hotels/resorts	S4SAZ03	2.5 R	-3.3 R	1.5 R	3.1 R	-2.0 R	0.7 R	0.8 R	-0.4 R	-3.6 R	4.5 R	0.3 R	2.4 R	0.7	
Motels/motor inns/apartments	S4SBZ03	-2.9 R	-0.8 R	4.3 R	-0.7 R	-0.1 R	-0.4 R	0.5 R	-1.3 R	-1.3 R	4.7 R	-1.6 R	2.5 R	-0.8	
Hosted accommodation ⁽³⁾	S4SCZ03	-3.0 R	2.4 R	7.4 R	1.7 R	-6.2 R	1.9 R	-11.7 R	9.4 R	4.3 R	-5.2 R	4.0 R	5.7 R	-2.4	
Backpackers/hostels	S4SDZ03	1.0 R	2.3 R	1.8 R	0.3 R	-0.1 R	-1.9 R	-1.6 R	0.5 R	-1.9 R	5.2 R	-0.6 R	3.9 R	-0.4	
Caravan parks/camping grounds	S4SEZ03	-3.6 R	-5.4 R	3.2 R	1.1 R	-2.0 R	2.8 R	2.3 R	-5.6 R	3.8 R	3.0 R	-0.4 R	4.0 R	-4.4	
Guest nights trend (000)⁽⁴⁾															
Hotels/resorts	S4TAZ03	816 R	815 R	815 R	816 R	817 R	820 R	823 R	826 R	829 R	833 R	837 R	841 R	846	
Motels/motor inns/apartments	S4TBZ03	878 R	879 R	879 R	880 R	882 R	884 R	886 R	888 R	891 R	893 R	896 R	900 R	903	
Hosted accommodation ⁽³⁾	S4TCZ03	46 R	47 R	47 R	47 R	47 R	47 R	47 R	48 R	48 R	48 R	48 R	48 R	48	
Backpackers/hostels	S4TDZ03	347 R	351 R	355 R	357 R	356 R	353 R	350 R	349 R	351 R	355 R	360 R	365 R	369	
Caravan parks/camping grounds	S4TEZ03	515 R	512 R	509 R	508 R	508 R	509 R	512 R	516 R	519 R	523 R	526 R	530 R	535	
Percentage change from previous month															
Hotels/resorts	S4TAZ03	-0.2 R	-0.1 R	0 R	0.1 R	0.2 R	0.3 R	0.4 R	0.4 R	0.4 R	0.4 R	0.5 R	0.5 R	0.6	
Motels/motor inns/apartments	S4TBZ03	0 R	0 R	0.1 R	0.1 R	0.2 R	0.2 R	0.3 R	0.3 R	0.3 R	0.3 R	0.3 R	0.4 R	0.3	
Hosted accommodation ⁽³⁾	S4TCZ03	0.8 R	0.7 R	0.6 R	0.4 R	0.3 R	0.2 R	0.2 R	0.1 R	0.2 R	0.3 R	0.4 R	0.5 R	0.2	
Backpackers/hostels	S4TDZ03	0.8 R	1.2 R	1.1 R	0.5 R	-0.3 R	-0.8 R	-0.8 R	-0.3 R	0.6 R	1.2 R	1.4 R	1.4 R	1.2	
Caravan parks/camping grounds	S4TEZ03	-0.5 R	-0.6 R	-0.5 R	-0.3 R	0 R	0.3 R	0.6 R	0.7 R	0.7 R	0.7 R	0.6 R	0.8 R	0.8	

(1) All figures are subject to revision when the seasonal adjustment program is run each period.

(2) The seasonally adjusted series differs from the actual series in that the seasonal changes have been removed.

(3) Hosted accommodation includes private hotels, guest houses, bed and breakfasts, and farmstays.

(4) The trend series differs from the actual series in that both the seasonal and irregular components have been removed.

Symbol:

R revised

Table 5

North Island Guest Nights

	Actual series		Seasonally adjusted series ⁽¹⁾⁽²⁾		Trend series ⁽¹⁾⁽³⁾	
	Guest nights (000)	Change from same month previous year (percent)	Guest nights (000)	Change from previous month (percent)	Guest nights (000)	Change from previous month (percent)
<i>Series ref: ACS</i>	<i>S4A9R03</i>		<i>S4S9R03</i>		<i>S4T9R03</i>	
Month						
2003 Nov	1,446	-0.5	1,462 R	1.0 R	1,469 R	0.2 R
Dec	1,770	3.5	1,482 R	1.4 R	1,474 R	0.3 R
2004 Jan	2,426	5.9	1,486 R	0.3 R	1,479 R	0.4 R
Feb	1,742	2.1	1,490 R	0.3 R	1,485 R	0.4 R
Mar	1,711	3.1	1,479 R	-0.7 R	1,491 R	0.4 R
Apr	1,541	2.0	1,497 R	1.2 R	1,496 R	0.4 R
May	1,115	1.4	1,500 R	0.2 R	1,501 R	0.3 R
Jun	1,087	13.0	1,508 R	0.5 R	1,505 R	0.3 R
Jul	1,286	6.5	1,527 R	1.3 R	1,508 R	0.2 R
Aug	1,140	3.0	1,499 R	-1.9 R	1,510 R	0.1 R
Sep	1,281	4.0	1,525 R	1.8 R	1,512 R	0.1 R
Oct	1,388	3.0	1,491 R	-2.2 R	1,513 R	0.1 R
Nov	1,491	3.1	1,510 R	1.3 R	1,514 R	0.1 R
Dec	1,807	2.1	1,522 R	0.8 R	1,516 R	0.1 R
2005 Jan	2,508	3.4	1,544 R	1.4 R	1,518 R	0.1 R
Feb	1,749	0.4	1,491 R	-3.4 R	1,520 R	0.2 R
Mar	1,890	10.5	1,630 R	9.3 R	1,522 R	0.1 R
Apr	1,546	0.3	1,501 R	-7.9 R	1,524 R	0.1 R
May	1,116	0.1	1,503 R	0.1 R	1,524 R	0 R
Jun	1,126	3.5	1,558 R	3.7 R	1,523 R	-0.1 R
Jul	1,336	3.9	1,584 R	1.6 R	1,521 R	-0.2 R
Aug	1,145	0.4	1,505 R	-5.0 R	1,517 R	-0.2 R
Sep	1,266	-1.2	1,502 R	-0.2 R	1,513 R	-0.3 R
Oct	1,410	1.6	1,515 R	0.9 R	1,509 R	-0.3 R
Nov	1,481	-0.7	1,500 R	-1.0 R	1,505 R	-0.3 R
Dec	1,743	-3.5	1,472 R	-1.9 R	1,501 R	-0.3 R
2006 Jan	2,397	-4.4	1,477 R	0.3 R	1,499 R	-0.2 R
Feb	1,788	2.2	1,525 R	3.2 R	1,499 R	0 R
Mar	1,769	-6.4	1,524 R	-0.1 R	1,502 R	0.2 R
Apr	1,555	0.6	1,512 R	-0.7 R	1,508 R	0.4 R
May	1,117	0.1	1,508 R	-0.3 R	1,517 R	0.6 R
Jun	1,087	-3.4	1,502 R	-0.4 R	1,527 R	0.6 R
Jul	1,259	-5.7	1,489 R	-0.9 R	1,537 R	0.7 R
Aug	1,195	4.4	1,571 R	5.5 R	1,548 R	0.7 R
Sep	1,327	4.8	1,571 R	0 R	1,559 R	0.7 R
Oct	1,489	5.6	1,601 R	1.9 R	1,571 R	0.8 R
Nov	1,571	6.1	1,595	-0.4	1,584	0.8

(1) All figures are subject to revision when the seasonal adjustment program is run each period.

(2) The seasonally adjusted series differs from the actual series in that the seasonal changes have been removed.

(3) The trend series differs from the actual series in that both the seasonal and irregular components have been removed.

Symbol:

R revised

Table 6

South Island Guest Nights

	Actual series		Seasonally adjusted series ⁽¹⁾⁽²⁾		Trend series ⁽¹⁾⁽³⁾	
	Guest nights (000)	Change from same month previous year (percent)	Guest nights (000)	Change from previous month (percent)	Guest nights (000)	Change from previous month (percent)
<i>Series ref: ACS</i>	<i>S4A9S03</i>		<i>S4S9S03</i>		<i>S4T9S03</i>	
Month						
2003 Nov	1,069	2.1	1,033 R	-0.6 R	1,039 R	0.8 R
Dec	1,362	8.1	1,085 R	5.1 R	1,048 R	0.8 R
2004 Jan	1,728	4.6	1,039 R	-4.2 R	1,056 R	0.8 R
Feb	1,424	4.3	1,062 R	2.1 R	1,064 R	0.7 R
Mar	1,339	3.9	1,058 R	-0.3 R	1,071 R	0.7 R
Apr	1,150	7.0	1,073 R	1.4 R	1,077 R	0.6 R
May	694	8.3	1,083 R	1.0 R	1,083 R	0.5 R
Jun	620	17.8	1,120 R	3.4 R	1,088 R	0.5 R
Jul	825	4.2	1,077 R	-3.9 R	1,092 R	0.4 R
Aug	795	6.4	1,079 R	0.2 R	1,095 R	0.3 R
Sep	906	10.9	1,134 R	5.1 R	1,097 R	0.2 R
Oct	926	2.3	1,065 R	-6.1 R	1,099 R	0.1 R
Nov	1,162	8.6	1,119 R	5.1 R	1,099 R	0 R
Dec	1,367	0.4	1,093 R	-2.3 R	1,099 R	0 R
2005 Jan	1,830	5.9	1,102 R	0.8 R	1,098 R	-0.1 R
Feb	1,463	2.7	1,087 R	-1.4 R	1,097 R	-0.1 R
Mar	1,499	11.9	1,184 R	9.0 R	1,096 R	-0.1 R
Apr	1,097	-4.6	1,021 R	-13.8 R	1,094 R	-0.1 R
May	692	-0.2	1,079 R	5.8 R	1,093 R	-0.1 R
Jun	703	13.4	1,264 R	17.1 R	1,091 R	-0.1 R
Jul	834	1.0	1,094 R	-13.4 R	1,090 R	-0.1 R
Aug	797	0.3	1,090 R	-0.4 R	1,090 R	0 R
Sep	863	-4.8	1,081 R	-0.8 R	1,091 R	0.1 R
Oct	952	2.8	1,097 R	1.4 R	1,092 R	0.1 R
Nov	1,138	-2.0	1,091 R	-0.5 R	1,094 R	0.2 R
Dec	1,327	-2.9	1,062 R	-2.7 R	1,096 R	0.2 R
2006 Jan	1,866	2.0	1,123 R	5.7 R	1,099 R	0.2 R
Feb	1,504	2.8	1,115 R	-0.7 R	1,101 R	0.2 R
Mar	1,393	-7.1	1,101 R	-1.3 R	1,103 R	0.2 R
Apr	1,190	8.5	1,107 R	0.6 R	1,104 R	0.1 R
May	718	3.8	1,121 R	1.2 R	1,105 R	0.1 R
Jun	615	-12.5	1,103 R	-1.6 R	1,106 R	0.1 R
Jul	823	-1.3	1,084 R	-1.7 R	1,107 R	0.1 R
Aug	807	1.3	1,107 R	2.1 R	1,108 R	0.1 R
Sep	870	0.8	1,088 R	-1.8 R	1,109 R	0.1 R
Oct	985	3.4	1,135 R	4.4 R	1,111 R	0.2 R
Nov	1,168	2.7	1,119	-1.5	1,113	0.2

(1) All figures are subject to revision when the seasonal adjustment program is run each period.

(2) The seasonally adjusted series differs from the actual series in that the seasonal changes have been removed.

(3) The trend series differs from the actual series in that both the seasonal and irregular components have been removed.

Symbol:

R revised