

Embargoed until 10:45am – 12 December 2007

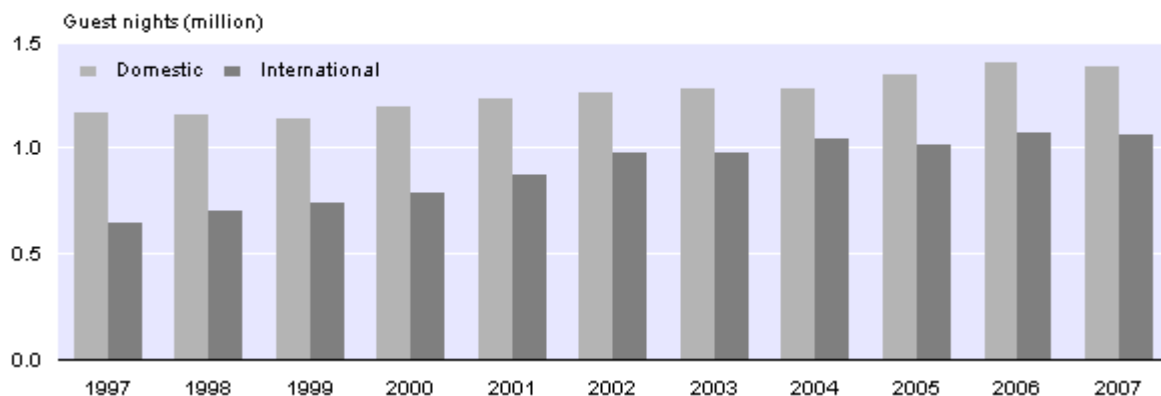
## Accommodation Survey: October 2007

### Highlights

#### In October 2007 compared with October 2006:

- Total guest nights were 1 percent lower.
- All five accommodation types recorded decreases.
- Ten of the 12 regions recorded lower guest nights.
- Guest nights were 2 percent lower in the North Island and unchanged for the South Island.
- Guest nights for international visitors were 1 percent lower.
- Domestic guest nights were 2 percent lower.

International and Domestic Guest Nights  
October 1997–2007



Geoff Bascand  
Government Statistician

12 December 2007  
ISSN 1178-0207

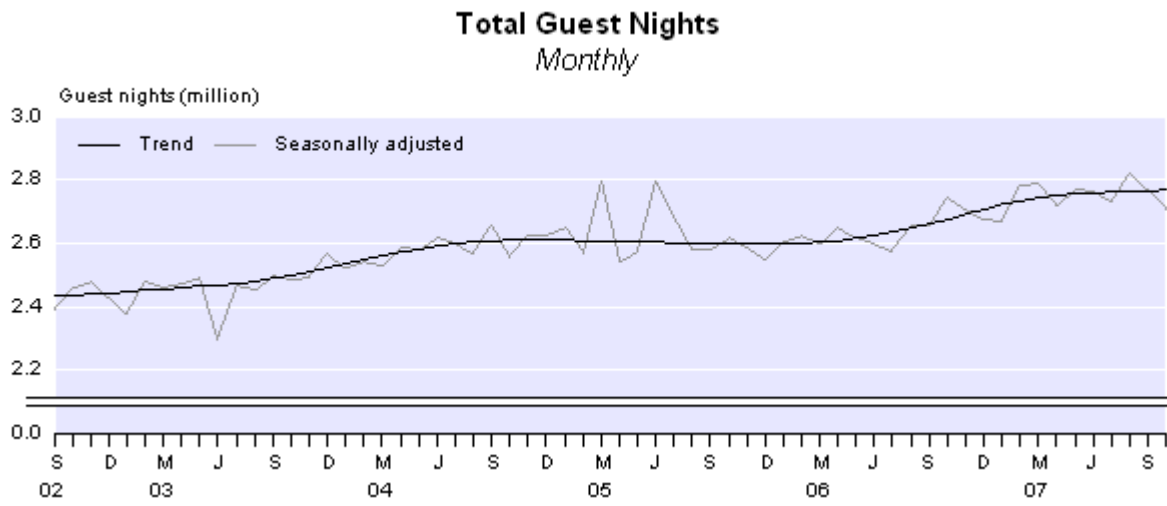
There is a companion Media Release published – [Accommodation Survey: October 2007](#).

# Commentary

## Total guest nights

Total guest nights in short-term commercial accommodation were 2.4 million in October 2007, down 1 percent compared with October 2006. This is the first month since July 2006 to record a decrease in total guest nights when compared with the same month of the previous year. However, compared with October 2005, total guest nights have increased 3 percent.

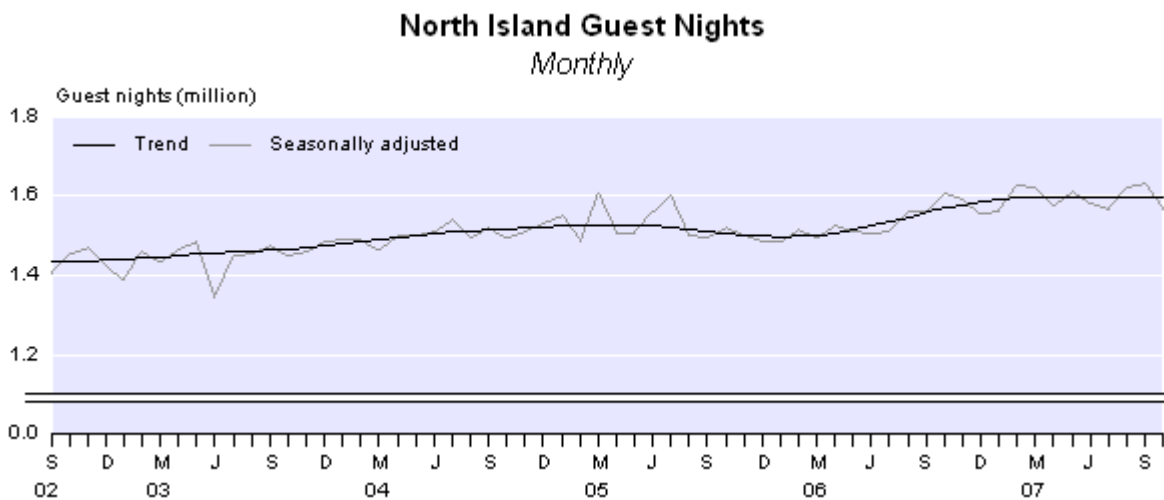
The trend in total guest nights has been increasing since January 2006, although it has been flattening in recent months. In October 2007, the trend level was 3 percent higher than in October 2006 and 6 percent higher than in October 2005.



## Guest nights by island

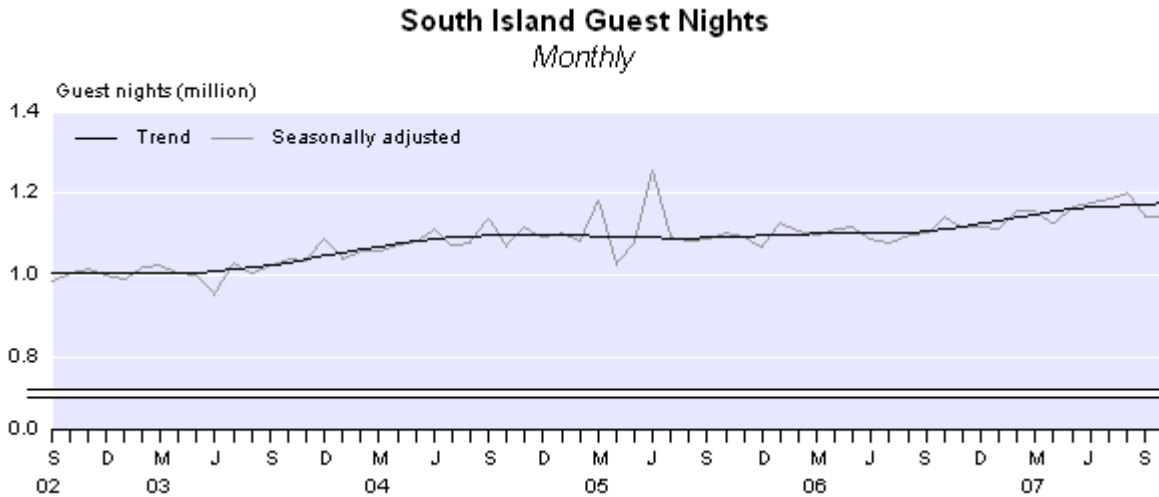
Guest nights in the North Island were 1.5 million in October 2007, a 2 percent decrease compared with October 2006, but a 3 percent increase compared with October 2005.

The trend in North Island guest nights has flattened in recent months. In October 2007, the trend level was 2 percent higher than in October 2006 and 6 percent higher than in October 2005.



Guest nights in the South Island were 1.0 million in October 2007, which is unchanged from October 2006.

The trend in South Island guest nights has been increasing since July 2005. In October 2007, the trend level was 6 percent higher than in October 2006 and 7 percent higher than in October 2005.



## Guest nights by region

Ten of the 12 regions recorded less guest nights in October 2007 than in October 2006. The Northland region (down 13,000 or 10 percent) had the largest decrease in guest nights, followed by the Taranaki, Manawatu-Wanganui region (down 9,000 or 7 percent) and Waikato (down 6,000 or 3 percent).

The Canterbury region (up 10,000 or 2 percent) recorded the largest increase in guest nights, followed by Otago (up 2,000 or 1 percent).

## Comparison with short-term overseas visitor arrival statistics

The Hot Off The Press release *External Migration: October 2007* shows that short-term overseas visitor arrivals in New Zealand for October 2007 were down 6,700 (4 percent) from October 2006. This followed an increase of 2,300 (1 percent) in September 2007 compared with September 2006.

Similarly, the number of stay days for all visitor arrivals in October 2007 was down 3 percent from October 2006. This followed a decrease of 2 percent in September 2007 compared with September 2006.

New Zealand resident short-term departures for October 2007 were up 15,700 (10 percent) on October 2006. This followed an increase of 6,500 (3 percent) in September 2007 compared with September 2006.

## Origin of guests

International visitors spent 1.1 million guest nights in short-term commercial accommodation in October 2007, a 1 percent decrease compared with October 2006, but a 5 percent increase compared with October 2005.

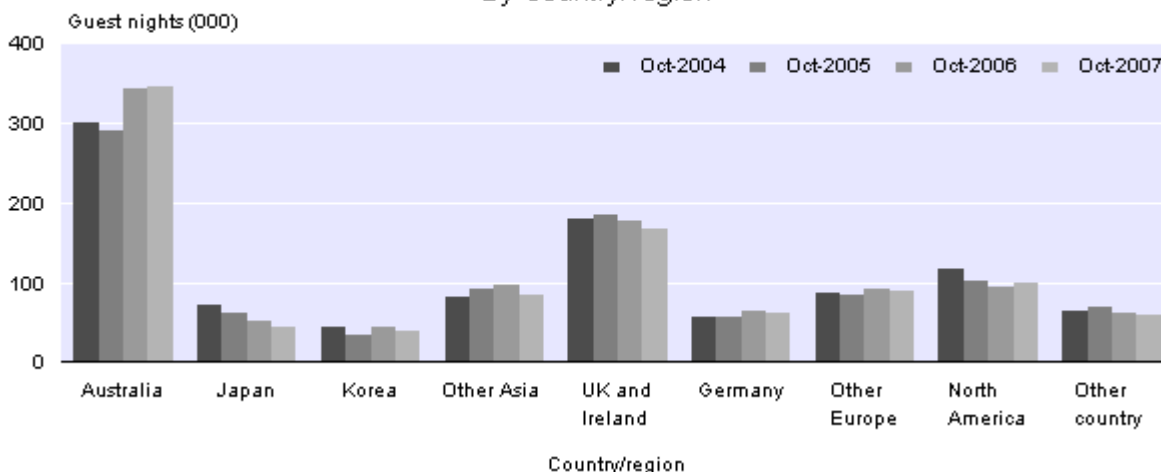
The largest decrease in international guest nights was for visitors from the Other Asia category (down 11,000 or 12 percent), followed by UK/Ireland (down 10,000 or 6 percent). The Other Asian grouping includes all Asian countries, with the exceptions of Japan and Korea. However, there was also a decrease in guest nights for visitors from Japan (down 6,000 or 13 percent) and Korea (down 5,000 or 12 percent). The largest increase in guest nights was for visitors from North America (up 4,000 or 5 percent).

In October 2007, international guest nights were 3 percent lower in the North Island and 2 percent higher in the South Island compared with October 2006. Six of the 12 regions had lower international guest nights, with the Auckland region (down 18,000 or 7 percent) having the largest decrease, followed by Northland (down 6,000 or 9 percent) and West Coast (down 5,000 or 9 percent). The largest increase was in the Otago region (up 13,000 or 8 percent).

Domestic guest nights accounted for 1.4 million guest nights in October 2007, a 2 percent decrease compared with October 2006 and a 2 percent increase compared with October 2005.

Domestic guest nights were 2 percent lower than October 2006 for both the North and South Islands. Ten of the 12 regions recorded lower domestic guest nights, with Otago (down 11,000 or 9 percent) having the largest decrease, followed by the Taranaki, Manawatu-Wanganui region (down 8,000 or 6 percent).

**International Guest Nights**  
*By country/region*



There was a response rate of 54 percent to the Accommodation Survey question on origin of guests this month. The response rate for this question normally ranges between 55 and 60 percent. Figures for those establishments that failed to respond have been imputed (see Non-response imputation). Such high levels of imputation can affect data quality, especially for regional statistics and/or statistics by accommodation type.

## Guest nights by accommodation type

All five accommodation types recorded lower guest nights in October 2007 than in October 2006. Motels (down 12,000 or 1 percent) had the largest decrease, followed by caravan parks/camping grounds (down 8,000 or 2 percent) and hotels (down 7,000 or 1 percent). This is the first month since June 2006 that all five accommodation types have decreased compared with the same month of the previous year.

Motels and hotels had the largest shares of total guest nights (both at 35 percent) in October 2007, followed by backpackers/hostels (16 percent).

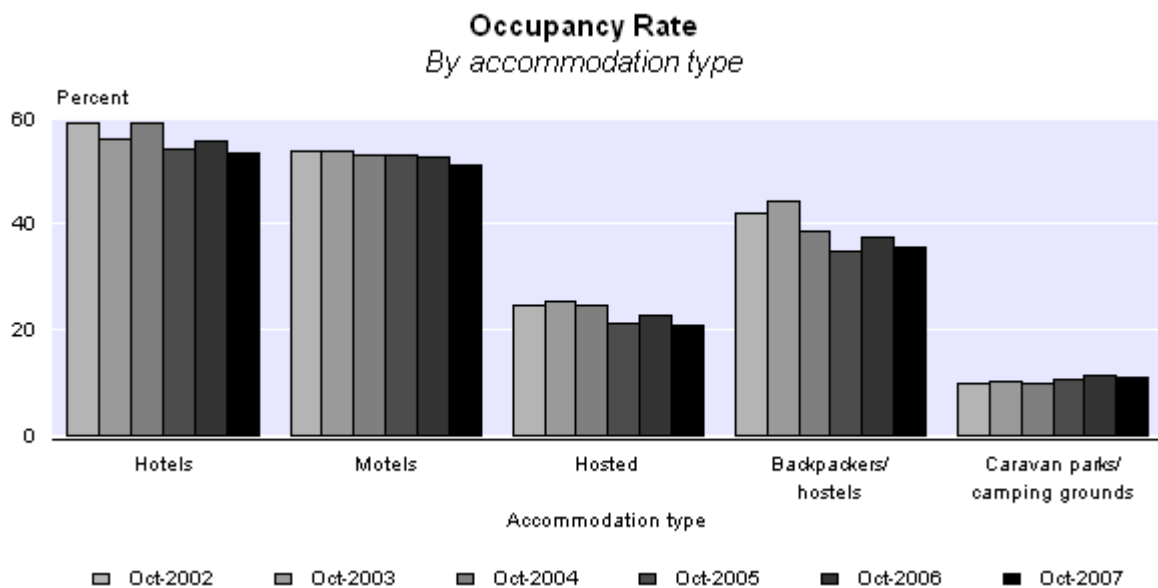
## Occupancy rate

In October 2007, the occupancy rate, excluding caravan parks/camping grounds, was 46 percent compared with 48 percent in October 2006.

Accommodation capacity, excluding caravan parks/camping grounds, was 3 percent above the October 2006 level.

Hotels had the highest occupancy rate (53 percent) of all the accommodation types in October 2007, followed by motels (51 percent) and backpackers/hostels (36 percent).

Excluding the caravan parks/camping grounds category, the Auckland region had the highest occupancy rate (57 percent) in October 2007, followed by the Wellington region (53 percent) and the Bay of Plenty (51 percent).



## Survey change

From the November 2007 survey month, information on domestic and international guest nights will be available on a monthly basis. The current origin of guest breakdown by country will no longer be available. This is the first stage of changes being made following a review on the Accommodation Survey which aims to balance the need for high quality information against the need to reduce respondent load.

## Non-response imputation

When respondents do not answer questions in the Accommodation Survey, Statistics New Zealand estimates the missing information based on data from similar establishments in the same and/or similar areas. For more information, please refer to the Technical notes of this release or contact Statistics New Zealand.

## Response rates by accommodation type for October 2007

Accommodation type	Percentage of establishments responding to questions on guest nights, guest arrivals and stay unit nights	Percentage of the guest night estimate from establishments that responded to the question on guest nights	Percentage of the origin of guest estimate from establishments that responded to the questions on the origin of guests
Hotels	79	90	53
Motels	77	81	55
Hosted	83	84	61
Backpackers/hostels	79	81	42
Caravan parks / camping grounds	79	87	66
<b>Total</b>	79	85	54

## Survey sponsorship

The Accommodation Survey is a monthly survey undertaken by Statistics New Zealand and sponsored by the Ministry of Tourism.

For technical information contact:  
Brylee Wayman or Tehseen Islam  
Christchurch 03 964 8700

**Email:** [info@stats.govt.nz](mailto:info@stats.govt.nz)

## **Technical notes**

### **Population**

The target population for this survey is all 'geographic units' (called 'establishments' in this publication) that are classified as short-term (less than one month) commercial accommodation providers operating in New Zealand. In terms of the Australian and New Zealand Standard Industrial Classification (ANZSIC), the target population is taken from class 5710 (accommodation), and the part of class 5720 (pubs, taverns and bars) that also provides accommodation.

The survey frame is all short-term commercial accommodation-providing geographic units belonging to an economically significant 'enterprise'. Economic significance is generally determined as being GST registered and having a turnover of at least \$30,000 per annum.

### **Survey errors**

This survey aims for 100 percent coverage of the population (a full census). In practice, however, an overall response rate of between 76 and 80 percent is usually achieved. The remaining units are given imputed values based upon the characteristics of similar establishments in the same or similar regions. Imputation introduces unknown errors into the estimates, and users of the data should bear this in mind. The size of these unknown errors is difficult to quantify.

Other errors occur for reasons such as respondent error, frame quality and errors in processing. While every effort is made to minimise these errors, they will still occur. It is not possible to quantify their effect.

### **Trend estimates**

For any series, the survey estimates can be broken down into three components: trend, seasonal and irregular. While seasonally adjusted series have had the seasonal component removed, the trend series have had both the seasonal and the irregular components removed. Trend estimates reveal the underlying direction of movement in a series, and are likely to indicate turning points more accurately than seasonally adjusted estimates.

The accommodation trend series are calculated using the X-12-ARIMA seasonal adjustment package. They are based on optimal moving averages of the seasonally adjusted series, with an adjustment for outlying values. The X-12-ARIMA package is an updated version of X-11-ARIMA, developed by the U.S. Census Bureau.

The trend estimates towards the end of the series incorporate new data as it becomes available, and can therefore change as more observations are added to the series. Revisions can be particularly large if an observation is treated as an outlier in one month, but is found to be part of the underlying trend as further observations are added to the series. All trend estimates are subject to revisions each month, but normally only the last two or three estimates are likely to be substantially altered.

### **Trend estimates versus month-on-month comparisons**

Trend estimates reveal the underlying direction of the movement in a series. In contrast, comparisons between one month and the same month in the previous year(s) do not take account of data recorded in between these periods, and are subject to one-off fluctuations. Reasons for fluctuations include changes in the timing of holidays, international crises, and large sporting and cultural events.

## Seasonally adjusted estimates

The X-12-ARIMA package has been used to produce the seasonally adjusted estimates referred to in the Commentary text. Seasonal adjustment aims to eliminate the impact of regular seasonal events. These may be due to climatic effects (such as more guests staying in camping grounds during the summer) or calendar effects (such as holidays). This makes the data for adjacent months more comparable. All seasonally adjusted figures are subject to revision each month.

Further information about [seasonal adjustment](#) is available on the Statistics New Zealand website.

## Classification of accommodation type

The predominant capacity provided determines the accommodation type. For instance, if a business provides both motel and camping ground accommodation, but the majority of its stay units are motel rooms, then it would be classified as a motel. The classification system used is the New Zealand Accommodation Classification, broadly defined below:

- Hotels: includes both hotels and resorts
- Motels: includes motor inns, apartments and motels
- Hosted: includes private hotels, guest houses, bed and breakfasts, and holiday farm (farmstay) accommodation
- Backpackers/hostels
- Caravan parks/camping grounds.

Further information on the classification system is available on request.

## Classification of residence of guest

Every third month (January, April, July and October), the survey asks all respondents to classify their guests as coming from the following regions:

<b>Domestic</b>	<b>International</b>
Auckland	Australia
Wellington	Japan
Rest of North Island	Korea
Canterbury	Other Asia
Otago	UK and Ireland
Rest of South Island	Germany
Don't know	Other Europe
	North America
	Other
	Don't know

## **Other definitions**

### **Business frame**

A register (maintained by Statistics New Zealand) of all economically significant businesses operating in New Zealand from which the survey population is drawn.

### **Establishment**

The smallest statistical unit operating within a single physical location and owned by a single enterprise. The term is used to represent what is usually called the 'geographic unit' in other Statistics New Zealand publications.

### **Guest night**

A guest night is equivalent to one guest spending one night at an establishment. For example, a motel with 15 guests spending two nights would report provision of 30 guest nights of accommodation.

### **Stay unit**

The term used to describe the unit of accommodation that is available to be charged out to guests (for example a powered site in a caravan park, a bed in a backpackers, a room in a hotel or motel).

### **Capacity (stay unit nights available)**

This is the basic measure of an establishment's accommodation capacity. It is defined as one stay unit multiplied by one night. For example, 10 units in a motel available for guest use (whether occupied or not) for the full 31 days in July would have an accommodation capacity of 310 stay unit nights.

### **Occupancy rate**

This derived variable is calculated by dividing stay unit nights occupied by stay unit nights available. In the case of the motel above, if six of its 10 units were occupied every night in July, it would have  $6 \times 31 = 186$  stay unit nights occupied, and its occupancy rate would be 60 percent.

### **Average length of stay**

This derived variable is calculated by dividing total guest nights by total guest first nights.

## More information

For more information, follow the [link](#) from the Technical notes of this release on the Statistics New Zealand website.

## Confidentiality

Data collected and information contained in this publication must conform to the provisions of the Statistics Act 1975. This requires that published information maintains the confidentiality of individual respondents.

## Copyright

Information obtained from Statistics New Zealand may be freely used, reproduced, or quoted unless otherwise specified. In all cases Statistics New Zealand must be acknowledged as the source.

## Liability

While care has been used in processing, analysing and extracting information, Statistics New Zealand gives no warranty that the information supplied is free from error. Statistics New Zealand shall not be liable for any loss suffered through the use, directly or indirectly, of any information, product or service.

## Timing

Timed statistical releases are delivered using postal and electronic services provided by third parties. Delivery of these releases may be delayed by circumstances outside the control of Statistics New Zealand. Statistics New Zealand accepts no responsibility for any such delays.

### Next release...

*Accommodation Survey: November 2007* will be released on 18 January 2008.

Statistics New Zealand: The first source of independent information for your key decisions.

# Tables

The following tables can be downloaded from the Statistics New Zealand website in Excel format. If you do not have access to Excel, you may use the [Excel file viewer](#) to view, print and export the contents of the file.

## List of tables

1. Establishments, capacity, guest nights, occupancy rate and average stay, by accommodation type
2. Occupancy rate excluding caravan parks/camping grounds, by region
3. Total guest nights
4. Seasonally adjusted and trend guest nights, by accommodation type
5. North Island guest nights
6. South Island guest nights
7. Regional guest nights

## Accommodation pivot tables

The Accommodation pivot tables provide more detailed information, breaking the survey variables down by regional tourism organisation areas and territorial authority areas.

- **Regional Tourism Organisation (RTO) Area by Accommodation Type (Type)**  
Contains number of establishments, capacity, occupancy rates, guest nights, guest arrivals, length of stay and some ratios of these variables.

The graph on the first worksheet will change to display the RTO and Type you select on the second worksheet. When printing the graph, select a cell rather than the graph so the heading will print.

- **Total Accommodation by Territorial Authority (TA)**  
Contains number of establishments, capacity, occupancy rates, guest nights, guest arrivals, length of stay and some ratios of these variables.
- **Origin of Guests and Employment Information by Regional Tourism Organisation (RTO)**  
Contains domestic and international guest night variables and employees.

## Printing a selection of data in a spreadsheet

If you only want to print out some of the information in a spreadsheet, either select the pages you want in the print box, or hide the data you don't want to print by highlighting the columns or rows of data you don't want, then right click the mouse and select 'Hide'.

Accommodation Survey: October 2007

Table 1

**Establishments, Capacity, Guest Nights, Occupancy Rate and Average Stay<sup>(1)(2)(3)(5)</sup>**  
*By accommodation type*

Accommodation type	Series ref: ACSM	Month												
		2006			2007									
		Oct	Nov	Dec	Jan	Feb	Mar	Apr	May	Jun	Jul	Aug	Sep	Oct
<b>Hotels/resorts</b>														
Number of establishments	S1AA	568	569	570	569	566	568	569	572	568	571	572	574	572
Capacity (000)	S1AB	964	936	967	972	875	979	950	968	937	978	984	946	984
Guest nights (000)	S1AC	852	977	886	1,002	1,041	1,061	852	682	629	780	769	785	845
Occupancy rate (percent)	S1AD	55.7	65.8	52.9	58.8	72.3	67.3	53.1	47.5	44.1	48.3	49.3	50.4	53.4
Average stay (nights)	S1AE	1.8	1.7	1.8	1.9	1.8	1.8	1.8	1.8	1.8	2.0	1.9	1.9	1.8
<b>Motels/motor inns/apartments</b>														
Number of establishments	S1BA	1,745	1,748	1,757	1,760	1,769	1,769	1,769	1,767	1,755	1,756	1,774	1,777	1,791
Capacity (000)	S1BB	834	809	839	840	766	850	827	856	826	859	862	835	866
Guest nights (000)	S1BC	875	902	972	1,242	1,126	1,143	954	682	671	821	791	835	863
Occupancy rate (percent)	S1BD	52.8	58.9	53.3	65.0	72.2	68.1	55.2	44.4	42.4	46.5	47.0	49.6	51.2
Average stay (nights)	S1BE	1.8	1.8	1.8	1.9	1.8	1.8	1.8	1.8	1.8	1.9	2.0	1.9	1.8
<b>Hosted accommodation<sup>(4)</sup></b>														
Number of establishments	S1CA	628	658	663	674	680	679	669	615	583	561	579	620	663
Capacity (000)	S1CB	101	100	104	105	95	104	99	96	89	90	92	95	104
Guest nights (000)	S1CC	42	55	64	82	89	74	46	23	21	28	29	30	38
Occupancy rate (percent)	S1CD	22.9	30.5	31.4	39.6	48.5	37.9	24.2	14.2	12.9	16.1	17.2	17.2	20.8
Average stay (nights)	S1CE	1.8	1.7	1.8	1.8	1.8	1.8	1.8	1.9	2.0	2.2	2.3	2.0	1.8
<b>Backpackers/hostels</b>														
Number of establishments	S1DA	436	438	443	442	443	445	441	430	414	411	412	426	445
Capacity (000)	S1DB	762	736	760	760	695	774	750	760	723	747	758	744	781
Guest nights (000)	S1DC	319	390	427	504	483	496	410	294	279	322	301	307	314
Occupancy rate (percent)	S1DD	37.5	47.7	49.8	59.0	60.9	57.3	49.1	35.5	35.2	38.6	35.5	37.3	35.7
Average stay (nights)	S1DE	1.9	1.9	1.8	1.8	1.9	1.9	1.9	2.0	2.0	2.2	2.1	2.1	2.0
<b>Total excluding caravan parks/camping grounds</b>														
Number of establishments	S1XA	3,377	3,413	3,433	3,445	3,458	3,461	3,448	3,384	3,320	3,299	3,337	3,397	3,471
Capacity (000)	S1XB	2,661	2,580	2,670	2,677	2,431	2,708	2,625	2,681	2,575	2,674	2,696	2,620	2,736
Guest nights (000)	S1XC	2,088	2,324	2,348	2,830	2,737	2,773	2,262	1,681	1,600	1,951	1,889	1,957	2,060
Occupancy rate (percent)	S1XD	48.3	57.1	51.3	60.0	68.1	63.5	51.5	41.9	40.0	43.9	43.6	45.2	46.4
Average stay (nights)	S1XE	1.8	1.8	1.8	1.9	1.8	1.8	1.8	1.8	1.9	2.0	2.0	1.9	1.8
<b>Caravan parks/camping grounds</b>														
Number of establishments	S1EA	409	411	419	418	418	416	412	396	393	387	386	393	407
Capacity (000)	S1EB	1,593	1,540	1,622	1,622	1,456	1,605	1,544	1,457	1,405	1,442	1,451	1,430	1,593
Guest nights (000)	S1EC	386	416	862	1,534	755	626	552	261	210	254	242	329	379
Occupancy rate (percent)	S1ED	11.4	13.3	21.8	35.8	23.8	18.2	15.6	9.3	7.4	8.1	8.0	10.6	11.0
Average stay (nights)	S1EE	1.7	1.7	2.2	2.9	1.9	1.8	1.9	1.8	1.9	2.0	1.9	1.8	1.8
<b>Total</b>														
Number of establishments	S19A	3,786	3,824	3,852	3,863	3,876	3,877	3,860	3,780	3,713	3,686	3,723	3,790	3,878
Capacity (000)	S19B	4,255	4,120	4,292	4,299	3,886	4,314	4,169	4,138	3,980	4,116	4,148	4,050	4,329
Guest nights (000)	S19C	2,474	2,740	3,210	4,364	3,493	3,399	2,814	1,942	1,809	2,205	2,131	2,286	2,439
Occupancy rate (percent)	S19D	34.5	40.7	40.1	50.9	51.5	46.7	38.2	30.4	28.5	31.4	31.1	33.0	33.4
Average stay (nights)	S19E	1.8	1.8	1.9	2.1	1.8	1.8	1.8	1.8	1.9	2.0	2.0	1.9	1.8

For footnotes, see end of table.

**Accommodation Survey: October 2007**

Table 1  
continued

**Establishments, Capacity, Guest Nights, Occupancy Rate and Average Stay<sup>(1)(2)(3)(5)</sup>**  
*By accommodation type*

Accommodation type	Series ref: ACSM	Month												
		2006			2007									
		Oct	Nov	Dec	Jan	Feb	Mar	Apr	May	Jun	Jul	Aug	Sep	Oct
<b>Percentage change from the same month of the previous year</b>														
<b>Hotels/resorts</b>														
Number of establishments	S1AA	-0.9	-1.9	-1.0	-1.2	-1.9	-1.0	-0.7	-0.2	-0.2	0.9	1.1	1.4	0.7
Capacity	S1AB	1.4	1.2	1.6	2.0	1.4	2.6	2.4	1.4	3.2	4.1	4.8	2.5	2.1
Guest nights	S1AC	6.2	4.2	7.1	6.6	3.4	7.3	2.5	2.1	4.3	7.4	5.0	2.4	-0.8
Occupancy rate	S1AD	3.0	2.5	2.5	6.2	1.4	3.8	-1.0	0.5	-1.0	0.9	-1.9	-4.0	-4.0
Average stay (nights)	S1AE	3.7	1.5	3.4	5.9	2.2	5.2	1.8	1.4	-2.1	1.2	0.5	-1.1	1.2
<b>Motels/motor inns/apartments</b>														
Number of establishments	S1BA	3.0	2.9	2.6	2.6	3.2	3.0	3.1	3.6	3.1	3.1	3.4	2.6	2.6
Capacity	S1BB	3.1	3.3	3.0	1.9	4.2	4.3	4.8	5.2	5.0	5.5	5.0	4.4	3.8
Guest nights	S1BC	2.6	4.8	4.6	0.7	5.5	5.9	-0.1	7.1	5.0	3.0	6.6	2.6	-1.4
Occupancy rate	S1BD	-0.3	1.5	1.7	0.6	1.1	1.4	-3.0	1.6	-1.1	-2.6	0.5	-1.8	-3.0
Average stay (nights)	S1BE	0.9	2.1	1.6	0.9	1.4	0.1	0.5	1.3	-0.3	2.0	0.6	1.7	0.1
<b>Hosted accommodation<sup>(4)</sup></b>														
Number of establishments	S1CA	2.3	1.7	0.8	1.0	2.9	3.0	2.5	2.8	1.4	1.6	2.3	4.4	5.6
Capacity	S1CB	4.4	0.9	1.3	-0.1	0.7	-0.5	-1.3	-0.9	-1.7	-1.9	-2.2	2.3	2.7
Guest nights	S1CC	9.0	9.8	5.0	-0.3	5.2	7.8	-4.7	5.0	-0.5	-12.6	-0.6	-5.6	-8.5
Occupancy rate	S1CD	7.3	9.3	4.9	0.3	3.0	8.9	-4.2	9.1	-4.4	-10.5	2.7	-6.1	-9.2
Average stay (nights)	S1CE	2.4	0.9	3.5	-1.1	-0.5	2.8	-1.3	-0.3	1.1	-3.4	0.1	-0.7	1.5
<b>Backpackers/hostels</b>														
Number of establishments	S1DA	0.7	0.7	0.2	1.1	0.7	0.9	0.9	0.2	0.2	1.5	1.0	1.7	2.1
Capacity	S1DB	1.8	1.0	1.1	2.1	1.7	1.6	2.2	1.3	1.0	1.6	2.8	3.2	2.5
Guest nights	S1DC	8.8	7.3	2.8	4.3	5.4	6.7	6.9	6.6	11.2	12.1	8.8	10.3	-1.6
Occupancy rate	S1DD	7.2	7.0	0.1	2.7	3.2	4.3	2.7	5.9	9.7	7.5	2.7	6.8	-4.9
Average stay (nights)	S1DE	0.8	-0.3	-1.9	0.1	3.2	3.9	2.4	-3.3	1.1	10.9	-0.2	2.8	3.7
<b>Total excluding caravan parks/camping grounds</b>														
Number of establishments	S1XA	1.9	1.5	1.3	1.5	1.9	2.1	2.1	2.4	1.8	2.3	2.5	2.6	2.8
Capacity	S1XB	2.2	1.8	1.9	1.9	2.3	2.7	2.9	2.5	2.9	3.6	4.1	3.3	2.8
Guest nights	S1XC	5.1	5.1	5.2	3.4	4.7	6.6	2.0	4.9	5.7	5.9	6.2	3.5	-1.3
Occupancy rate	S1XD	2.8	3.4	1.6	3.1	1.8	3.4	-0.6	2.4	1.6	1.3	0.3	-0.9	-3.9
Average stay (nights)	S1XE	2.1	1.5	1.7	2.4	2.0	2.7	1.3	0.6	-0.7	3.0	0.4	0.7	1.0
<b>Caravan parks/camping grounds</b>														
Number of establishments	S1EA	1.2	0.5	0.2	-0.5	-0.7	-0.7	-1.7	-2.0	-1.8	-2.0	-2.0	-1.5	-0.5
Capacity	S1EB	-2.0	-2.9	-3.2	-3.6	-4.4	-3.7	-4.0	-4.2	-2.8	-2.6	-1.9	-0.7	0
Guest nights	S1EC	2.9	2.1	2.8	0.6	11.7	11.5	4.7	11.6	11.1	6.0	8.8	7.3	-2.0
Occupancy rate	S1ED	7.6	5.7	9.6	7.2	17.4	13.8	7.0	17.3	12.0	4.0	6.9	9.0	-3.4
Average stay (nights)	S1EE	-1.6	-1.3	0.8	-0.8	1.7	4.3	0.6	5.3	0.4	3.9	3.4	0.7	2.9
<b>Total</b>														
Number of establishments	S19A	1.8	1.4	1.2	1.3	1.7	1.8	1.7	1.9	1.4	1.8	2.0	2.2	2.4
Capacity	S19B	0.6	0	-0.1	-0.2	-0.3	0.2	0.2	0	0.8	1.4	1.9	1.9	1.7
Guest nights	S19C	4.7	4.6	4.6	2.4	6.1	7.5	2.5	5.8	6.3	5.9	6.4	4.1	-1.4
Occupancy rate	S19D	4.5	4.9	4.2	4.9	5.8	6.4	2.1	5.7	4.1	3.3	2.5	1.2	-3.2
Average stay (nights)	S19E	1.5	1.0	1.4	1.3	2.0	3.0	1.2	1.2	-0.6	3.1	0.7	0.7	1.4

- (1) Establishments that are temporarily closed for more than 14 days during a month are excluded from the results.  
(2) Establishments primarily offering accommodation for periods of one month or more are excluded from the survey.  
(3) Monthly capacity shows the number of stay units available and is affected by the number of days in a month.  
(4) Hosted accommodation includes private hotels, guest houses, bed and breakfasts, and farmstays.  
(5) Percentage changes are calculated on unrounded figures.

Table 2

**Occupancy Rate Excluding Caravan Parks/Camping Grounds<sup>(1)</sup>**  
By region

Region	Series ref: ACSM	Month												
		2006			2007									
		Oct	Nov	Dec	Jan	Feb	Mar	Apr	May	Jun	Jul	Aug	Sep	Oct
<b>Occupancy rate (percent)</b>														
Northland	S2RAB	43.0	49.6	47.3	63.0	64.8	57.3	44.3	33.9	29.4	30.6	28.1	32.4	39.4
Auckland	S2RBB	58.8	67.2	56.5	62.1	71.2	71.4	56.8	52.1	52.8	52.2	53.8	54.8	56.6
Waikato	S2RCB	40.2	50.5	46.6	56.4	58.0	56.5	46.1	36.7	36.0	38.5	36.3	41.0	40.3
Bay of Plenty	S2RDB	54.4	60.0	55.7	63.6	66.3	63.5	55.8	46.2	41.1	45.4	38.9	48.0	50.5
Hawke's Bay/Gisborne	S2REB	47.2	51.1	49.5	64.0	64.6	63.5	48.6	38.9	37.9	37.7	37.3	40.5	46.4
Taranaki/Manawatu-Wanganui	S2RFB	40.2	40.5	34.6	42.4	51.7	48.9	39.4	35.6	33.2	39.6	43.3	43.7	36.2
Wellington	S2RGB	58.7	65.6	52.6	57.8	74.8	69.0	56.8	50.7	48.9	46.2	48.2	54.5	52.7
Nelson/Marlborough/Tasman	S2RHB	38.0	51.6	53.9	67.3	72.4	62.1	47.7	34.0	31.7	30.9	31.7	32.6	36.4
Canterbury	S2RIB	48.3	58.7	51.7	58.6	69.9	62.2	51.6	40.4	37.9	43.1	41.3	43.5	47.9
West Coast	S2RJB	36.9	49.5	45.9	58.6	67.1	57.3	45.3	28.5	24.6	26.6	25.4	28.4	36.0
Otago	S2RKB	45.9	58.6	55.7	65.7	73.9	68.3	57.6	41.6	40.6	61.2	61.1	51.3	46.6
Southland	S2RLB	37.9	50.3	46.4	56.4	68.6	61.4	43.8	31.5	24.4	24.5	25.6	28.3	33.9
<b>New Zealand</b>	<b>S2RZB</b>	<b>48.3</b>	<b>57.1</b>	<b>51.3</b>	<b>60.0</b>	<b>68.1</b>	<b>63.5</b>	<b>51.5</b>	<b>41.9</b>	<b>40.0</b>	<b>43.9</b>	<b>43.6</b>	<b>45.2</b>	<b>46.4</b>
<b>Percentage change from the same month of the previous year</b>														
Northland	S2RAB	14.0	4.8	-1.2	2.3	2.4	4.3	-6.5	2.6	1.6	-1.7	-4.0	-4.6	-8.3
Auckland	S2RBB	5.2	3.7	1.3	7.7	2.0	5.9	1.9	3.0	5.2	7.3	1.7	-0.1	-3.7
Waikato	S2RCB	-2.2	7.3	5.6	6.1	3.1	1.6	-0.8	7.9	-1.6	3.3	5.3	6.3	0.2
Bay of Plenty	S2RDB	3.8	1.6	2.2	1.7	-3.4	3.7	0.4	4.4	-5.8	-0.6	-13.5	-0.4	-7.1
Hawke's Bay/Gisborne	S2REB	1.8	8.9	5.2	8.7	1.1	1.4	-1.7	4.3	0	3.5	-3.2	-1.0	-1.8
Taranaki/Manawatu-Wanganui	S2RFB	-2.6	-2.9	-3.4	3.6	11.3	6.0	0.8	1.6	-2.2	-11.9	0.1	-8.8	-9.8
Wellington	S2RGB	6.0	6.0	4.4	10.2	6.4	1.8	-2.9	-3.1	-3.6	-18.1	-6.0	-3.5	-10.2
Nelson/Marlborough/Tasman	S2RHB	-0.9	4.7	6.6	0.3	2.6	1.5	-1.5	5.3	2.1	-3.7	1.8	-0.4	-4.4
Canterbury	S2RIB	-1.6	2.6	2.1	-1.6	1.5	-0.1	-1.1	3.4	6.5	5.6	7.4	-1.2	-0.9
West Coast	S2RJB	0.8	-0.7	-1.3	-0.2	3.3	1.2	1.9	1.5	5.8	2.6	2.8	-0.8	-2.5
Otago	S2RKB	3.9	3.5	-2.5	0.6	-2.5	4.9	-1.2	-1.6	1.3	12.2	2.6	1.9	1.5
Southland	S2RLB	2.5	-5.1	1.7	-4.7	-0.2	5.8	-3.6	2.2	-0.9	-4.9	-5.6	-4.1	-10.6
<b>New Zealand</b>	<b>S2RZB</b>	<b>2.8</b>	<b>3.4</b>	<b>1.6</b>	<b>3.1</b>	<b>1.8</b>	<b>3.4</b>	<b>-0.6</b>	<b>2.4</b>	<b>1.6</b>	<b>1.3</b>	<b>0.3</b>	<b>-0.9</b>	<b>-3.9</b>

(1) More detailed information is available from regional tourism organisations or Statistics New Zealand.

Table 3

## Total Guest Nights

	Actual series		Seasonally adjusted series <sup>(1)(2)</sup>		Trend series <sup>(1)(3)</sup>	
	Guest nights (000)	Change from same month previous year (percent)	Guest nights (000)	Change from previous month (percent)	Guest nights (000)	Change from previous month (percent)
<i>Series ref: ACS</i>	<i>S4A9Z03</i>		<i>S4S9Z03</i>		<i>S4T9Z03</i>	
<b>Month</b>						
2004 Oct	2,314	2.7	2,559 R	-3.7 R	2,611 R	0.1 R
Nov	2,652	5.5	2,628 R	2.7 R	2,612 R	0 R
Dec	3,174	1.3	2,623 R	-0.2 R	2,611 R	0 R
2005 Jan	4,338	4.4	2,652 R	1.1 R	2,611 R	0 R
Feb	3,212	1.5	2,569 R	-3.1 R	2,610 R	0 R
Mar	3,389	11.1	2,798 R	8.9 R	2,609 R	0 R
Apr	2,643	-1.7	2,542 R	-9.1 R	2,608 R	0 R
May	1,808	0	2,578 R	1.4 R	2,606 R	-0.1 R
Jun	1,829	7.1	2,798 R	8.5 R	2,604 R	-0.1 R
Jul	2,169	2.7	2,680 R	-4.2 R	2,602 R	-0.1 R
Aug	1,942	0.4	2,580 R	-3.8 R	2,601 R	-0.1 R
Sep	2,129	-2.7	2,581 R	0 R	2,600 R	0 R
Oct	2,362	2.1	2,619 R	1.5 R	2,600 R	0 R
Nov	2,619	-1.3	2,589 R	-1.1 R	2,599 R	0 R
Dec	3,070	-3.3	2,551 R	-1.5 R	2,599 R	0 R
2006 Jan	4,263	-1.7	2,610 R	2.3 R	2,599 R	0 R
Feb	3,292	2.5	2,624 R	0.5 R	2,600 R	0.1 R
Mar	3,162	-6.7	2,599 R	-0.9 R	2,604 R	0.1 R
Apr	2,746	3.9	2,651 R	2.0 R	2,609 R	0.2 R
May	1,836	1.5	2,620 R	-1.1 R	2,617 R	0.3 R
Jun	1,702	-6.9	2,601 R	-0.7 R	2,627 R	0.4 R
Jul	2,082	-4.0	2,576 R	-1.0 R	2,638 R	0.4 R
Aug	2,002	3.1	2,654 R	3.0 R	2,650 R	0.5 R
Sep	2,197	3.2	2,660 R	0.2 R	2,664 R	0.5 R
Oct	2,474	4.7	2,747 R	3.3 R	2,679 R	0.6 R
Nov	2,740	4.6	2,709 R	-1.4 R	2,694 R	0.6 R
Dec	3,210	4.6	2,674 R	-1.3 R	2,710 R	0.6 R
2007 Jan	4,364	2.4	2,669 R	-0.2 R	2,724 R	0.5 R
Feb	3,493	6.1	2,782 R	4.2 R	2,736 R	0.4 R
Mar	3,399	7.5	2,787 R	0.2 R	2,745 R	0.3 R
Apr	2,814	2.5	2,722 R	-2.4 R	2,751 R	0.2 R
May	1,942	5.8	2,774 R	1.9 R	2,756 R	0.2 R
Jun	1,809	6.3	2,764 R	-0.4 R	2,760 R	0.1 R
Jul	2,205	5.9	2,730 R	-1.2 R	2,763 R	0.1 R
Aug	2,131	6.4	2,822 R	3.4 R	2,765 R	0.1 R
Sep	2,286	4.1	2,769 R	-1.9 R	2,765 R	0 R
Oct	2,439	-1.4	2,705	-2.3	2,768	0.1

(1) All figures are subject to revision when the seasonal adjustment program is run each period.

(2) The seasonally adjusted series differs from the actual series in that the seasonal changes have been removed.

(3) The trend series differs from the actual series in that both the seasonal and irregular components have been removed.

**Symbol:**

R revised

Table 4

**Seasonally Adjusted and Trend Guest Nights<sup>(1)</sup>**  
By accommodation type

Accommodation type	Series ref: ACSM	Month												
		2006			2007									
		Oct	Nov	Dec	Jan	Feb	Mar	Apr	May	Jun	Jul	Aug	Sep	Oct
<b>Seasonally adjusted guest nights (000)<sup>(2)</sup></b>														
Hotels/resorts	S4SAZ03	859 R	860 R	859 R	861 R	861 R	870 R	846 R	848 R	857 R	856 R	875 R	860 R	853
Motels/motor inns/apartments	S4SBZ03	919 R	908 R	901 R	901 R	931 R	927 R	900 R	945 R	920 R	904 R	955 R	921 R	905
Hosted accommodation <sup>(3)</sup>	S4SCZ03	50 R	49 R	48 R	49 R	51 R	50 R	46 R	47 R	46 R	44 R	46 R	46 R	46
Backpackers/hostels	S4SDZ03	374 R	370 R	365 R	370 R	376 R	378 R	379 R	375 R	386 R	387 R	392 R	397 R	369
Caravan parks/camping grounds	S4SEZ03	546 R	521 R	513 R	512 R	565 R	553 R	539 R	573 R	546 R	542 R	562 R	556 R	532
<b>Percentage change from previous month</b>														
Hotels/resorts	S4SAZ03	2.5 R	0.1 R	-0.2 R	0.2 R	0 R	1.0 R	-2.7 R	0.1 R	1.1 R	-0.1 R	2.3 R	-1.8 R	-0.8
Motels/motor inns/apartments	S4SBZ03	2.5 R	-1.2 R	-0.8 R	0.1 R	3.3 R	-0.4 R	-3.0 R	5.0 R	-2.7 R	-1.7 R	5.6 R	-3.5 R	-1.8
Hosted accommodation <sup>(3)</sup>	S4SCZ03	4.1 R	-1.9 R	-2.2 R	1.3 R	4.6 R	-2.7 R	-7.5 R	3.2 R	-1.9 R	-6.2 R	6.2 R	-1.1 R	0
Backpackers/hostels	S4SDZ03	4.2 R	-1.1 R	-1.2 R	1.4 R	1.4 R	0.7 R	0.2 R	-0.9 R	2.7 R	0.3 R	1.4 R	1.2 R	-7.1
Caravan parks/camping grounds	S4SEZ03	5.0 R	-4.5 R	-1.6 R	-0.1 R	10.2 R	-2.1 R	-2.5 R	6.2 R	-4.6 R	-0.8 R	3.7 R	-1.1 R	-4.3
<b>Guest nights trend (000)<sup>(4)</sup></b>														
Hotels/resorts	S4TAZ03	849 R	857 R	862 R	863 R	861 R	858 R	856 R	856 R	857 R	858 R	860 R	861 R	862
Motels/motor inns/apartments	S4TBZ03	901 R	905 R	910 R	913 R	917 R	919 R	921 R	922 R	923 R	924 R	924 R	924 R	925
Hosted accommodation <sup>(3)</sup>	S4TCZ03	49 R	49 R	49 R	49 R	49 R	48 R	48 R	47 R	47 R	46 R	46 R	45 R	45
Backpackers/hostels	S4TDZ03	365 R	368 R	371 R	372 R	374 R	376 R	378 R	381 R	384 R	387 R	391 R	394 R	396
Caravan parks/camping grounds	S4TEZ03	523 R	527 R	532 R	537 R	541 R	544 R	547 R	549 R	551 R	552 R	553 R	553 R	554
<b>Percentage change from previous month</b>														
Hotels/resorts	S4TAZ03	1.0 R	0.9 R	0.5 R	0.1 R	-0.2 R	-0.3 R	-0.2 R	0 R	0.1 R	0.2 R	0.2 R	0.1 R	0.1
Motels/motor inns/apartments	S4TBZ03	0.4 R	0.5 R	0.5 R	0.4 R	0.3 R	0.3 R	0.2 R	0.1 R	0.1 R	0.1 R	0 R	0 R	0.1
Hosted accommodation <sup>(3)</sup>	S4TCZ03	0.6 R	0.4 R	0.2 R	-0.2 R	-0.6 R	-0.9 R	-1.1 R	-1.1 R	-1.0 R	-1.0 R	-1.0 R	-0.9 R	-0.7
Backpackers/hostels	S4TDZ03	1.2 R	0.9 R	0.6 R	0.4 R	0.4 R	0.5 R	0.6 R	0.8 R	0.8 R	0.9 R	0.9 R	0.8 R	0.6
Caravan parks/camping grounds	S4TEZ03	0.8 R	0.8 R	0.9 R	0.8 R	0.8 R	0.7 R	0.5 R	0.4 R	0.3 R	0.2 R	0.1 R	0 R	0.3

(1) All figures are subject to revision when the seasonal adjustment program is run each period.

(2) The seasonally adjusted series differs from the actual series in that the seasonal changes have been removed.

(3) Hosted accommodation includes private hotels, guest houses, bed and breakfasts, and farmstays.

(4) The trend series differs from the actual series in that both the seasonal and irregular components have been removed.

**Symbol:**

R revised

Table 5

## North Island Guest Nights

	Actual series		Seasonally adjusted series <sup>(1)(2)</sup>		Trend series <sup>(1)(3)</sup>	
	Guest nights (000)	Change from same month previous year (percent)	Guest nights (000)	Change from previous month (percent)	Guest nights (000)	Change from previous month (percent)
<i>Series ref: ACS</i>	<i>S4A9R03</i>		<i>S4S9R03</i>		<i>S4T9R03</i>	
<b>Month</b>						
2004 Oct	1,388	3.0	1,493 R	-1.9 R	1,517 R	0.2 R
Nov	1,491	3.1	1,509 R	1.1 R	1,519 R	0.2 R
Dec	1,807	2.1	1,529 R	1.3 R	1,521 R	0.2 R
2005 Jan	2,508	3.4	1,549 R	1.3 R	1,523 R	0.1 R
Feb	1,749	0.4	1,486 R	-4.1 R	1,525 R	0.1 R
Mar	1,890	10.5	1,607 R	8.1 R	1,526 R	0.1 R
Apr	1,546	0.3	1,508 R	-6.2 R	1,527 R	0 R
May	1,116	0.1	1,503 R	-0.3 R	1,526 R	-0.1 R
Jun	1,126	3.5	1,561 R	3.8 R	1,524 R	-0.2 R
Jul	1,336	3.9	1,600 R	2.5 R	1,520 R	-0.2 R
Aug	1,145	0.4	1,498 R	-6.4 R	1,515 R	-0.3 R
Sep	1,266	-1.2	1,495 R	-0.2 R	1,510 R	-0.3 R
Oct	1,410	1.6	1,519 R	1.6 R	1,506 R	-0.3 R
Nov	1,481	-0.7	1,498 R	-1.3 R	1,501 R	-0.3 R
Dec	1,743	-3.5	1,484 R	-1.0 R	1,498 R	-0.2 R
2006 Jan	2,397	-4.4	1,485 R	0.1 R	1,497 R	-0.1 R
Feb	1,788	2.2	1,515 R	2.0 R	1,498 R	0.1 R
Mar	1,769	-6.4	1,493 R	-1.5 R	1,501 R	0.2 R
Apr	1,555	0.6	1,523 R	2.0 R	1,507 R	0.4 R
May	1,117	0.1	1,509 R	-0.9 R	1,515 R	0.5 R
Jun	1,087	-3.4	1,505 R	-0.2 R	1,525 R	0.6 R
Jul	1,259	-5.7	1,512 R	0.4 R	1,536 R	0.7 R
Aug	1,195	4.4	1,560 R	3.2 R	1,547 R	0.7 R
Sep	1,327	4.8	1,559 R	0 R	1,558 R	0.7 R
Oct	1,489	5.6	1,605 R	2.9 R	1,569 R	0.7 R
Nov	1,571	6.1	1,593 R	-0.8 R	1,578 R	0.6 R
Dec	1,825	4.7	1,558 R	-2.2 R	1,585 R	0.5 R
2007 Jan	2,517	5.0	1,560 R	0.1 R	1,590 R	0.3 R
Feb	1,920	7.4	1,627 R	4.3 R	1,594 R	0.2 R
Mar	1,931	9.2	1,623 R	-0.2 R	1,596 R	0.1 R
Apr	1,607	3.3	1,577 R	-2.8 R	1,596 R	0 R
May	1,189	6.4	1,609 R	2.0 R	1,597 R	0 R
Jun	1,143	5.1	1,581 R	-1.8 R	1,597 R	0 R
Jul	1,301	3.4	1,564 R	-1.1 R	1,597 R	0 R
Aug	1,244	4.2	1,623 R	3.7 R	1,598 R	0 R
Sep	1,388	4.6	1,630 R	0.4 R	1,597 R	0 R
Oct	1,454	-2.3	1,565	-4.0	1,598	0.1

(1) All figures are subject to revision when the seasonal adjustment program is run each period.

(2) The seasonally adjusted series differs from the actual series in that the seasonal changes have been removed.

(3) The trend series differs from the actual series in that both the seasonal and irregular components have been removed.

**Symbol:**

R revised

Table 6

## South Island Guest Nights

	Actual series		Seasonally adjusted series <sup>(1)(2)</sup>		Trend series <sup>(1)(3)</sup>		
	Guest nights (000)	Change from same month previous year (percent)	Guest nights (000)	Change from previous month (percent)	Guest nights (000)	Change from previous month (percent)	
Series ref: ACS	S4A9S03		S4S9S03		S4T9S03		
<b>Month</b>							
2004	Oct	926	2.3	1,067 R	-6.2 R	1,099 R	0.1 R
	Nov	1,162	8.6	1,119 R	4.8 R	1,100 R	0 R
	Dec	1,367	0.4	1,095 R	-2.1 R	1,099 R	0 R
2005	Jan	1,830	5.9	1,104 R	0.8 R	1,098 R	-0.1 R
	Feb	1,463	2.7	1,083 R	-1.9 R	1,097 R	-0.1 R
	Mar	1,499	11.9	1,182 R	9.1 R	1,095 R	-0.1 R
	Apr	1,097	-4.6	1,025 R	-13.2 R	1,094 R	-0.1 R
	May	692	-0.2	1,077 R	5.0 R	1,092 R	-0.1 R
	Jun	703	13.4	1,254 R	16.4 R	1,091 R	-0.1 R
	Jul	834	1.0	1,092 R	-12.9 R	1,090 R	-0.1 R
	Aug	797	0.3	1,083 R	-0.8 R	1,091 R	0 R
	Sep	863	-4.8	1,088 R	0.4 R	1,092 R	0.1 R
	Oct	952	2.8	1,102 R	1.3 R	1,093 R	0.2 R
	Nov	1,138	-2.0	1,091 R	-1.0 R	1,095 R	0.2 R
	Dec	1,327	-2.9	1,068 R	-2.1 R	1,097 R	0.2 R
2006	Jan	1,866	2.0	1,125 R	5.4 R	1,099 R	0.1 R
	Feb	1,504	2.8	1,108 R	-1.5 R	1,100 R	0.1 R
	Mar	1,393	-7.1	1,097 R	-1.0 R	1,101 R	0.1 R
	Apr	1,190	8.5	1,114 R	1.6 R	1,101 R	0 R
	May	718	3.8	1,116 R	0.2 R	1,102 R	0 R
	Jun	615	-12.5	1,090 R	-2.3 R	1,102 R	0.1 R
	Jul	823	-1.3	1,080 R	-0.9 R	1,103 R	0.1 R
	Aug	807	1.3	1,096 R	1.5 R	1,105 R	0.2 R
	Sep	870	0.8	1,101 R	0.4 R	1,108 R	0.3 R
	Oct	985	3.4	1,143 R	3.8 R	1,112 R	0.4 R
	Nov	1,168	2.7	1,119 R	-2.1 R	1,118 R	0.5 R
	Dec	1,385	4.4	1,117 R	-0.1 R	1,125 R	0.6 R
2007	Jan	1,846	-1.1	1,111 R	-0.6 R	1,133 R	0.7 R
	Feb	1,573	4.6	1,158 R	4.2 R	1,141 R	0.7 R
	Mar	1,467	5.3	1,155 R	-0.3 R	1,149 R	0.7 R
	Apr	1,207	1.4	1,130 R	-2.2 R	1,155 R	0.5 R
	May	753	4.8	1,168 R	3.4 R	1,160 R	0.4 R
	Jun	666	8.4	1,177 R	0.8 R	1,164 R	0.4 R
	Jul	904	9.8	1,189 R	1.0 R	1,168 R	0.3 R
	Aug	886	9.8	1,203 R	1.2 R	1,171 R	0.2 R
	Sep	898	3.2	1,141 R	-5.1 R	1,172 R	0.1 R
	Oct	985	0	1,143	0.2	1,175	0.3

(1) All figures are subject to revision when the seasonal adjustment program is run each period.

(2) The seasonally adjusted series differs from the actual series in that the seasonal changes have been removed.

(3) The trend series differs from the actual series in that both the seasonal and irregular components have been removed.

**Symbol:**

R revised

Table 7

## Regional Guest Nights

Region	Series ref: ACSM	Month												
		2006			2007									
		Oct	Nov	Dec	Jan	Feb	Mar	Apr	May	Jun	Jul	Aug	Sep	Oct
<b>Guest Nights (000)</b>														
Northland	S6RA03	129	138	210	364	205	184	144	90	76	79	76	93	116
Auckland	S6RB03	459	493	481	562	521	570	461	379	375	415	417	429	455
Waikato	S6RC03	206	243	287	408	302	299	249	164	163	186	172	196	200
Bay of Plenty	S6RD03	242	244	342	510	318	307	284	195	179	211	176	227	242
Hawke's Bay/Gisborne	S6RE03	104	100	155	234	136	140	119	76	72	77	74	82	104
Taranaki/Manawatu-Wanganui	S6RF03	141	124	140	191	174	165	134	103	105	146	151	156	132
Wellington	S6RG03	209	231	211	249	264	267	217	182	173	186	178	204	206
Nelson/Marlborough/Tasman	S6RH03	123	157	233	372	255	220	170	100	85	87	90	95	119
Canterbury	S6RI03	402	454	506	617	558	528	455	296	275	339	325	357	412
West Coast	S6RJ03	98	121	135	178	174	151	117	68	56	64	59	75	93
Otago	S6RK03	299	348	418	562	463	450	382	240	215	377	375	325	300
Southland	S6RL03	63	88	94	118	122	119	83	48	35	37	37	45	60
<b>New Zealand</b>	<b>S6RZ03</b>	<b>2,474</b>	<b>2,740</b>	<b>3,210</b>	<b>4,364</b>	<b>3,493</b>	<b>3,399</b>	<b>2,814</b>	<b>1,942</b>	<b>1,809</b>	<b>2,205</b>	<b>2,131</b>	<b>2,286</b>	<b>2,439</b>
<b>Percentage change from the same month of the previous year<sup>(1)</sup></b>														
Northland		14.3	7.0	5.3	14.2	8.5	5.6	-5.5	8.6	3.8	-7.2	2.3	0.3	-10.0
Auckland		10.6	5.6	4.5	6.0	6.9	13.4	6.1	3.4	7.8	15.8	10.7	8.6	-0.8
Waikato		-2.7	12.5	1.0	1.9	8.1	6.4	1.1	9.3	-0.4	-2.4	8.2	3.4	-2.8
Bay of Plenty		4.7	1.8	8.6	3.8	4.7	11.4	6.5	9.9	4.2	2.2	-7.8	8.7	-0.2
Hawke's Bay/Gisborne		-0.1	7.9	7.8	2.0	-2.6	2.9	2.8	15.3	6.1	5.7	-0.7	4.5	-0.1
Taranaki/Manawatu-Wanganui		-4.6	-4.7	-2.2	-2.7	14.7	7.0	4.4	-0.1	1.4	-5.6	0.8	-7.9	-6.5
Wellington		11.1	10.9	6.7	7.8	11.3	8.7	2.4	6.1	8.4	-2.0	5.4	6.4	-1.2
Nelson/Marlborough/Tasman		4.0	3.2	4.4	-3.4	2.2	4.7	6.0	14.6	12.7	6.3	13.2	1.9	-3.4
Canterbury		2.2	3.7	5.6	-1.9	3.9	1.8	1.2	1.6	8.9	9.5	14.5	3.1	2.5
West Coast		3.1	2.0	5.1	3.2	11.0	3.1	-1.4	7.2	8.9	9.7	9.0	8.3	-5.2
Otago		4.3	1.5	2.8	0.8	4.9	9.7	1.3	4.0	5.5	11.9	6.2	2.6	0.6
Southland		6.7	2.5	3.6	-4.0	3.0	10.0	-2.3	7.0	11.4	1.9	1.7	3.2	-4.4
<b>New Zealand</b>		<b>4.7</b>	<b>4.6</b>	<b>4.6</b>	<b>2.4</b>	<b>6.1</b>	<b>7.5</b>	<b>2.5</b>	<b>5.8</b>	<b>6.3</b>	<b>5.9</b>	<b>6.4</b>	<b>4.1</b>	<b>-1.4</b>

(1) Percentage changes are calculated on unrounded figures.