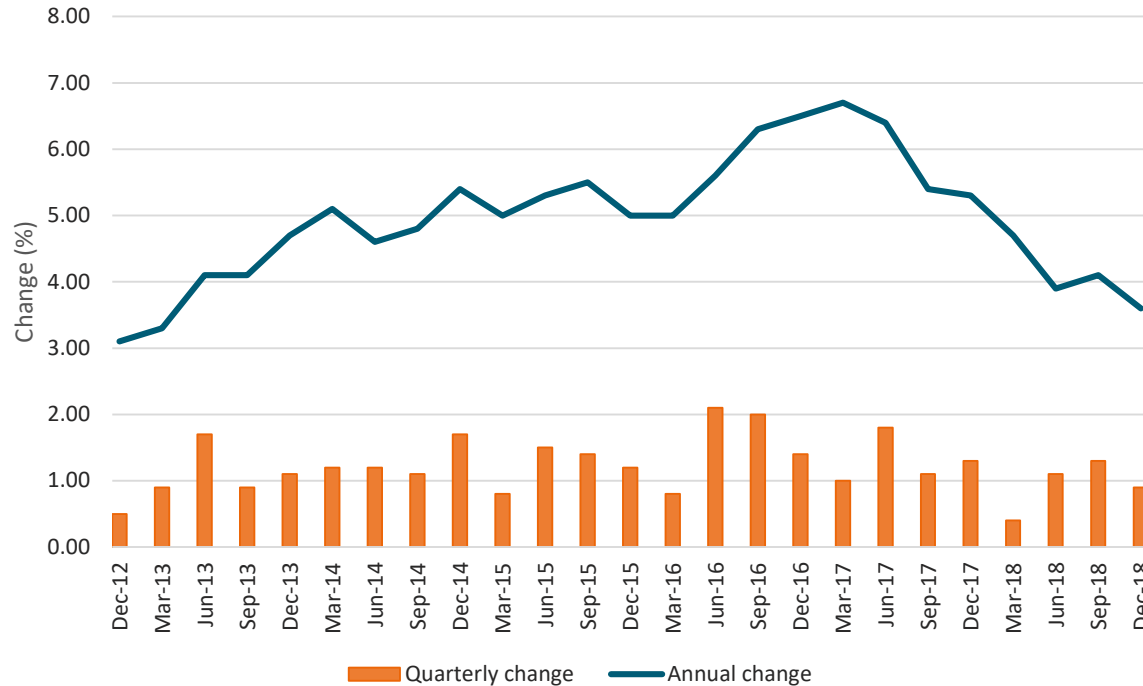


Purchase of new housing in the CPI

CPI purchase of housing, price change

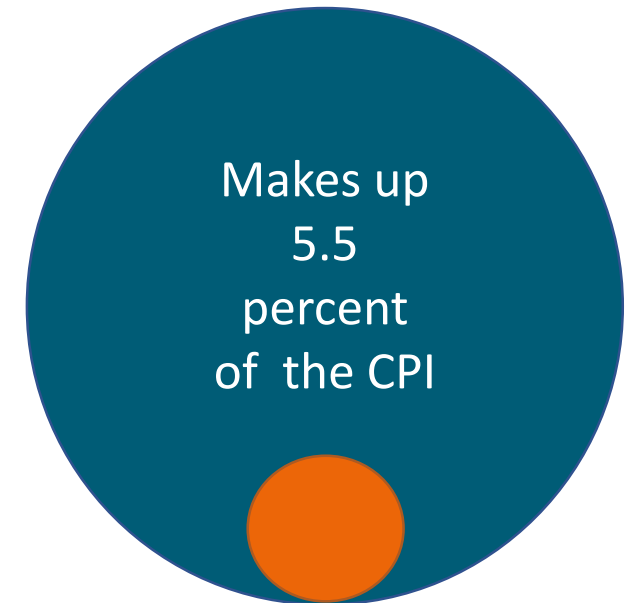


December 2018 quarter

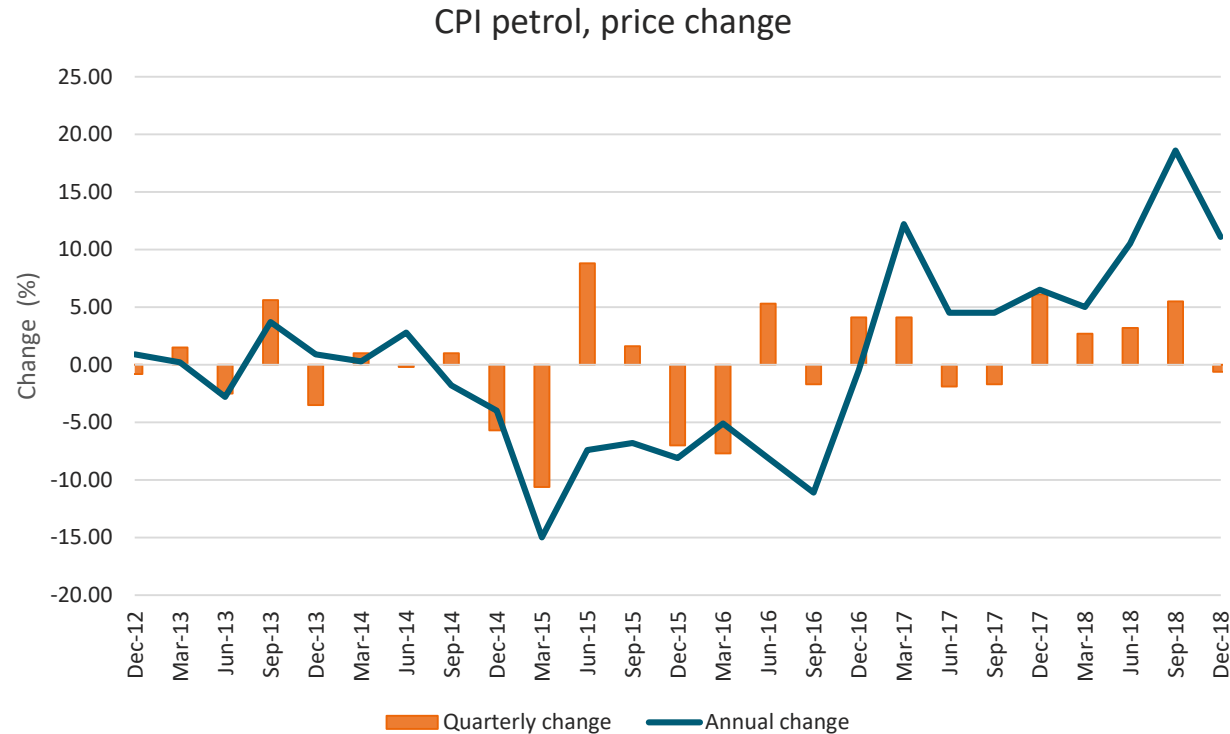
Quarterly change +0.9 percent
 Annual change +3.6 percent

Quarterly regional change

Auckland	Wellington	Canterbury
+0.5 percent	+1.4 percent	+0.5 percent



Petrol prices in the CPI

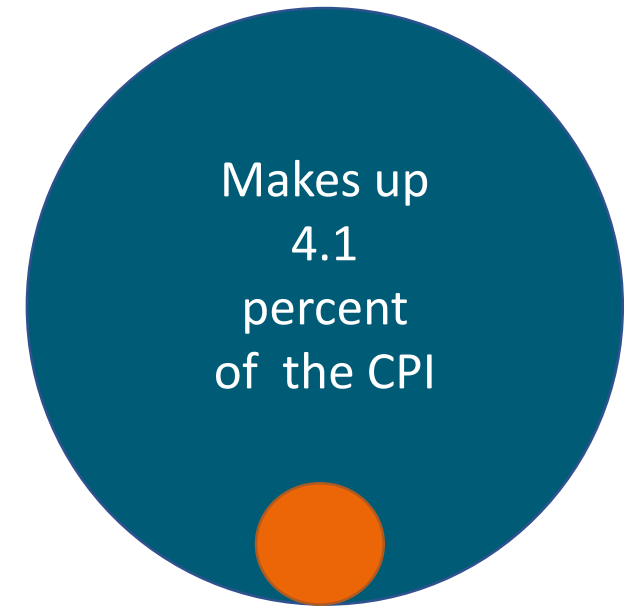


December 2018 quarter

Quarterly change -0.6 percent
 Annual change +11 percent

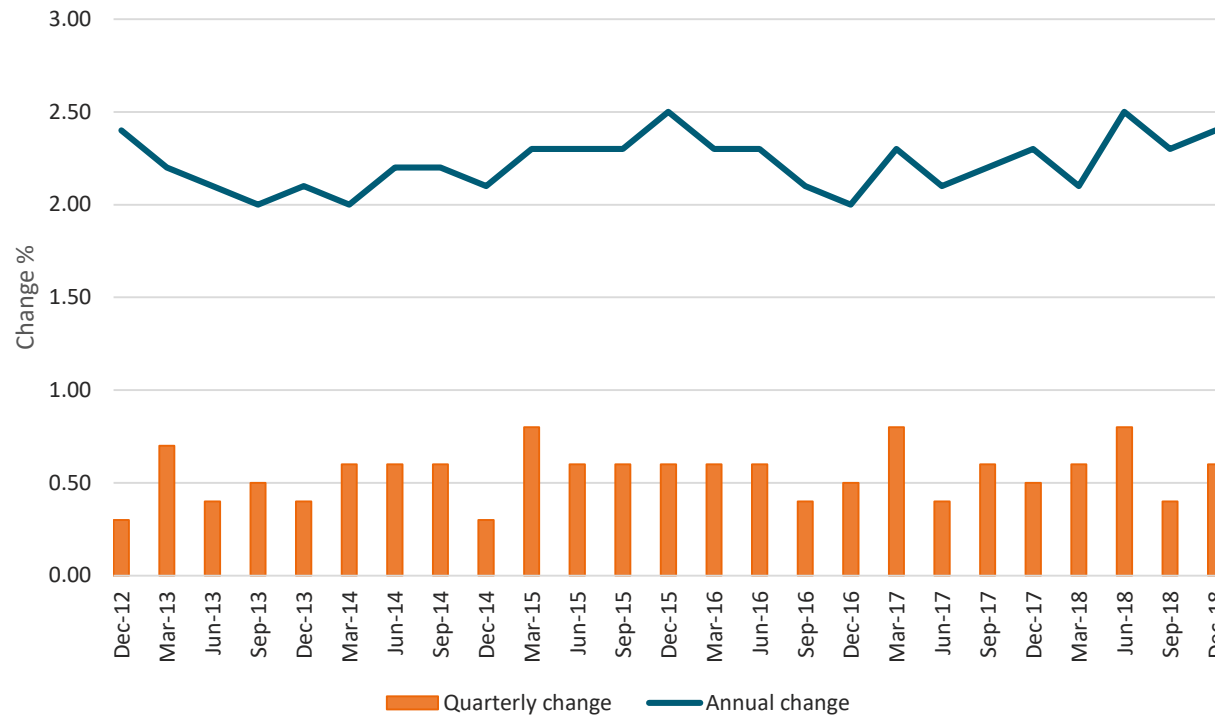
Quarterly regional change

Auckland +0.4 percent	Wellington -2.6 percent	Canterbury -3.1 percent
--------------------------	----------------------------	----------------------------



Rent prices in the CPI

CPI rentals for housing, price change



December 2018 quarter

Quarterly change 0.6 percent
 Annual change 2.4 percent

Quarterly regional change

Auckland	Wellington	Canterbury
+0.4 percent	+0.7 percent	+0.4 percent

