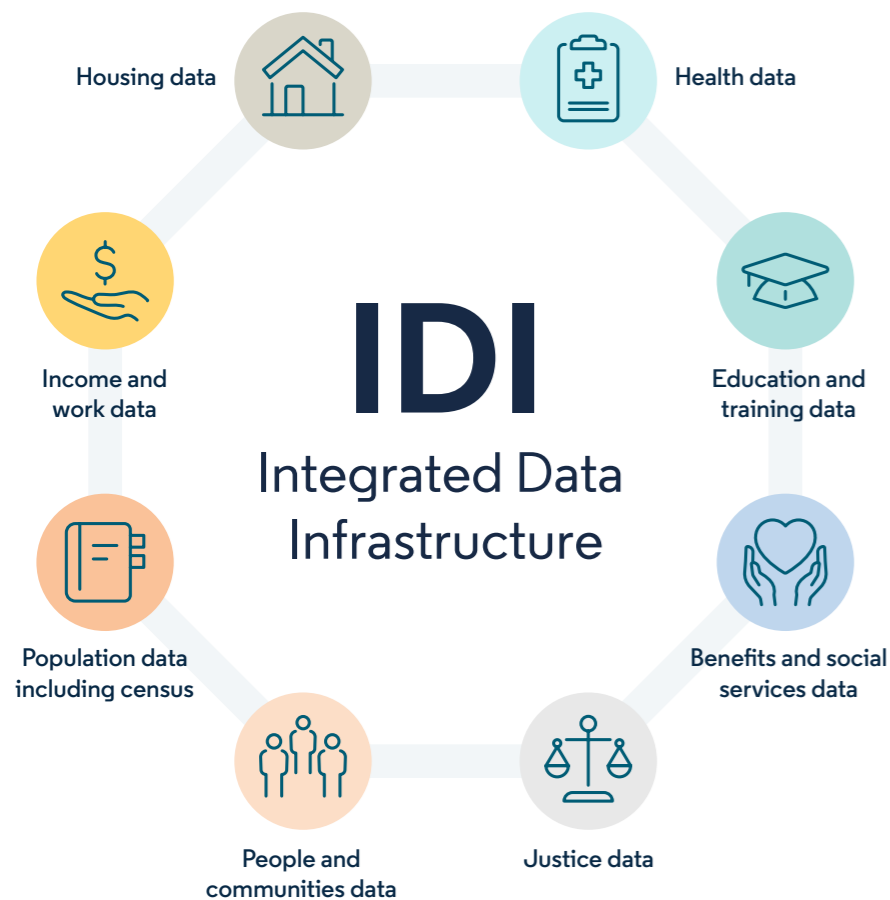


Stats NZ's Integrated Data Infrastructure (IDI) is a large research database containing de-identified microdata about people and households.



The IDI contains person-centred microdata from a range of government agencies, Stats NZ surveys including the 2013 Census, and non-government organisations. For more information about data in the IDI, see www.stats.govt.nz/integrated-data/integrated-data-infrastructure

The Longitudinal Business Database (LBD) complements the IDI with microdata about businesses. For more information about data in the LBD, see www.stats.govt.nz/integrated-data/longitudinal-business-database



Stats NZ operates a five-safes environment, balancing privacy and confidentiality with data insights.

For information about applying to use the IDI or to learn about how we keep the data safe, see www.stats.govt.nz/integrated-data

Health data

- B4 School Checks – from 2008
- Cancer registrations – from 1995
- Chronic conditions – pre 1985
- General medical services claims – from 2002
- Health Tracker – 2006–2014
- InterRAI – from 2014
- Laboratory claims – from 2003
- Maternity – from 2003
- Mortality – from 1988
- National Booking Reporting System – from 2003
- National Needs Assessment and Service Coordination Information System (SOCRATES) – from 1988
- National non-admitted patient collection – from 2007
- NES enrolments – from 2019
- New Zealand Health Survey – from 2011
- Pharmaceutical – from 2005
- PHO enrolments – 2003–2018
- Population cohort demographics and addresses – from 2003
- PRIMHD – from 2008
- Privately funded hospital discharges – from 2001
- Publicly funded hospital discharges – from 1988
- Virtual Diabetes Register – pre 1985
- Health Service Users – from 2014

Education and training data

- Early childhood education participation – from 2006
- Industry training – from 2001
- Schooling data – from 2004
- Targeted training – from 2001
- Tertiary Education – from 1994
- NSI – pre 1984
- Programme for the International Assessment of Adult Competencies – 2014
- Gateway Enrolment – from 2016

Benefits and social services data

- Injury claims data – from 1994
- Early Start Project – from 2016
- Working for Families – from 1999
- Benefits – from 1990
- Child, Youth, and Family – from 1991
- Children's Action Plan – from 2013
- Family Start – from 2008
- Youth services – from 2004
- Student loans and allowances – from 1992
- Service Outcome Report Tool (SORT) participation – from 2004

Justice data

- Sentencing and remand – from 1998
- Court charges – from 1992
- New Zealand Crime and Victims Survey – from 2018
- NIA links – from 2009
- Recorded crime: offenders – from 2009
- Recorded crime: victims – from 2014

People and communities data

- Auckland City Mission – from 1996
- Migrant Survey – 2012
- Drivers licence and motor vehicle registers – from 2006
- Disability Survey – 2013
- General Social Survey – from 2008
- Longitudinal Immigration Survey of NZ – 2005–2009
- Te Kupenga – 2013 and 2018

Population data

- Border movements – from 1997
- Births, deaths, and marriages – from 1840
- Civil unions – from 2005
- Border movements – from 1997
- Visa applicants – from 1997
- Census – 2013, 2018 and 2023

Income and work data

- Tax and income – from 1999
- Household Economic Survey – from 2006
- Household Labour Force Survey – from 2006
- NZ Income Survey – from 2006
- Survey of Family, Income, and Employment – 2002–2010
- Household Income and Living Survey – from 2024

Housing data

- Tenancy – from 2000
- Social housing – from 2000
- Emergency Housing – from 2016

