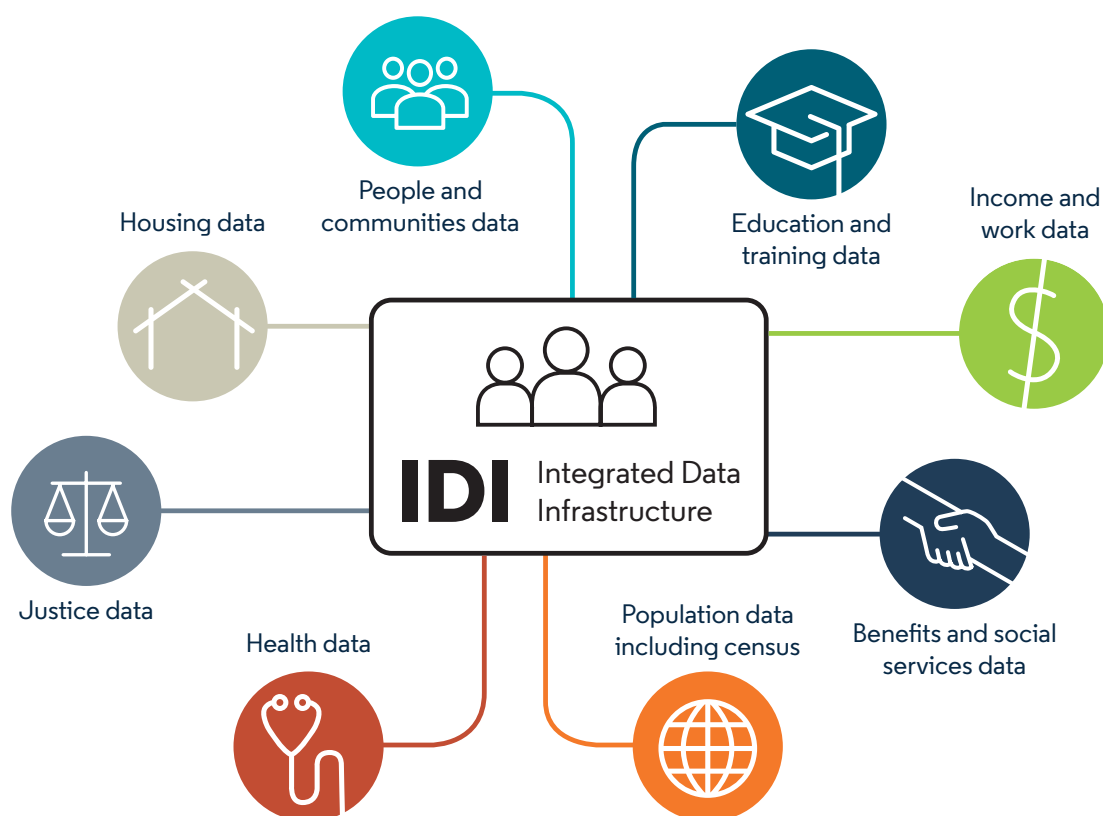


Stats NZ's Integrated Data Infrastructure (IDI) is a large research database containing de-identified microdata about people and households.



The IDI contains person-centred microdata from a range of government agencies, Stats NZ surveys including the 2013 Census, and non-government organisations. For more information about data in the IDI, see

[www.stats.govt.nz/integrated-data/integrated-data-infrastructure](http://www.stats.govt.nz/integrated-data/integrated-data-infrastructure)

The Longitudinal Business Database (LBD) complements the IDI with microdata about businesses. For more information about data in the LBD, see

[www.stats.govt.nz/integrated-data/longitudinal-business-database](http://www.stats.govt.nz/integrated-data/longitudinal-business-database)

## Health data

- B4 School Checks – from 2008
- Cancer registrations – from 1995
- Chronic conditions – pre 1985
- General medical services claims – from 2002
- Health Tracker – 2006–2014
- Immunisation – from 2005
- InterRAI – from 2014
- Laboratory claims – from 2003
- Maternity – from 2003
- Mortality – from 1988
- National Booking Reporting System – from 2003
- National Needs Assessment and Service Coordination Information System (SOCRATES) – from 1988
- National non-admitted patient collection – from 2007
- NES enrolments – from 2019
- New Zealand Health Survey – from 2011
- Pharmaceutical – from 2005
- PHO enrolments – 2003–2018
- Population cohort demographics and addresses – from 2003
- PRIMHD – from 2008
- Privately funded hospital discharges – from 2001
- Publicly funded hospital discharges – from 1988

## Education and training data

- Early childhood education participation – from 2006
- Industry training – from 2001
- Schooling data – from 2004
- Targeted training – from 2001
- Tertiary Education – from 1994
- NSI – pre 1985
- Programme for the International Assessment of Adult Competencies – 2014

## Benefits and social services data

- Injury claims data – from 1994
- Early Start Project – from 2016
- Working for Families – from 1999
- Benefits – from 1990
- Child, Youth, and Family – from 1991
- Children's Action Plan – from 2013
- Family Start – from 2008
- Youth services – from 2004
- Student loans and allowances – from 1992

## Justice data

- Sentencing and remand – from 1998
- Court charges – from 1992
- New Zealand Crime and Victims Survey – from 2018
- NIA links – from 2009
- Recorded crime: offenders – from 2009
- Recorded crime: victims – from 2014

## People and communities data

- Auckland City Mission – from 1996
- Migrant Survey – 2012
- Drivers licence and motor vehicle registers – from 2006
- Disability Survey – 2013
- General Social Survey – from 2008
- Longitudinal Immigration Survey of NZ – 2005–2009
- Te Kupenga – 2013 and 2018

## Population data

- Border movements – from 1997
- Births, deaths, and marriages – from 1840
- Civil unions – from 2005
- Border movements – from 1997
- Visa applicants – from 1997
- Census – 2013 and 2018

## Income and work data

- Tax and income – from 1999
- Household Economic Survey – from 2006
- Household Labour Force Survey – from 2006
- NZ Income Survey – from 2006
- Survey of Family, Income, and Employment – 2002–2010

## Housing data

- Tenancy – from 2000
- Social housing – from 2000



Stats NZ operates a five-safes environment, balancing privacy and confidentiality with data insights.

For information about applying to use the IDI or to learn about how we keep the data safe, see [www.stats.govt.nz/integrated-data](http://www.stats.govt.nz/integrated-data)

# IDI dataset coverage

		Pre1985	1985	1986	1987	1988	1989	1990	1991	1992	1993	1994	1995	1996	1997	1998	1999	2000	2001	2002	2003	2004	2005	2006	2007	2008	2009	2010	2011	2012	2013	2014	2015	2016	2017	2018	2019	2020	2021	2022	2023	2024			
<b>Health data</b>																																													
MoH	B4 School Checks																									2008	2009	2010	2011	2012	2013	2014	2015	2016	2017	2018	2019	2020	2021	2022	Jul-23				
MoH	Cancer registrations												1995	1996	1997	1998	1999	2000	2001	2002	2003	2004	2005	2006	2007	2008	2009	2010	2011	2012	2013	2014	2015	2016	2017	2018	2019	2020	2021	Dec-22					
MoH	Chronic conditions	Pre1985	1985	1986	1987	1988	1989	1990	1991	1992	1993	1994	1995	1996	1997	1998	1999	2000	2001		2002	2003	2004	2005	2006	2007	2008	2009	2010	2011	2012	2013	2014	2015	2016	Dec-17									
MoH	General medical services claims																				2002	2003	2004	2005	2006	2007	2008	2009	2010	2011	2012	2013	2014	2015	2016	2017	2018	2019	2020	2021	2022	Dec-23			
MoH	Health Tracker																								Jul-06	2007	2008	2009	2010	2011	2012	2013	Jun-14												
MoH	Immunisation																								2005	2006	2007	2008	2009	2010	2011	2012	2013	2014	2015	2016	2017	2018	2019	2020	2021	2022	Jun-23		
MoH	InterRAI																												2010	2011	2012	2013	2014	2015	2016	2017	2018	2019	2020	2021	2022	Jun-23			
MoH	Laboratory claims																					2003	2004	2005	2006	2007	2008	2009	2010	2011	2012	2013	2014	2015	2016	2017	2018	2019	2020	2021	2022	Jan-23			
MoH	Maternity																					2003	2004	2005	2006	2007	2008	2009	2010	2011	2012	2013	2014	2015	2016	2017	2018	2019	2020	Dec-21					
MoH	Mortality				Dec - 1987	1988	1989	1990	1991	1992	1993	1994	1995	1996	1997	1998	1999	2000	2001	2002		2003	2004	2005	2006	2007	2008	2009	2010	2011	2012	2013	2014	2015	2016	2017	2018	2019	Dec-20						
MoH	National Booking Reporting System																					2003	2004	2005	2006	2007	2008	2009	2010	2011	2012	2013	2014	2015	2016	2017	2018	2019	2020	2021	2022	Jun-23			
MoH	National Needs Assessment and Service Coordination Information System (SOCRATES)															1998	1999	2000	2001	2002	2003	2004	2005	2006	2007	2008	2009	2010	2011	2012	2013	2014	2015	2016	2017	2018	2019	2020	2021	Jul-22					
MoH	National non-admitted patient collection																									2007	2008	2009	2010	2011	2012	2013	2014	2015	2016	2017	2018	2019	2020	2021	Jun-22				
MoH	NES enrolments																												2010	2011	2012	2013	2014	2015	2016	2017	2018	2019	2020	2021	2022	May-23			
MOH	New Zealand Health Survey																													2011	2012	2013	2014	2015	2016	2017	2018	2019							
MoH	Pharmaceutical																						2005	2006	2007	2008	2009	2010	2011	2012	2013	2014	2015	2016	2017	2018	2019	2020	2021	2022	Dec-23				
MoH	PHO enrolments																					2003	2004	2005	2006	2007	2008	2009	2010	2011	2012	2013	2014	2015	2016	2017	Nov-18								
MoH	Population cohort demographics and addresses																					2003	2004	2005	2006	2007	2008	2009	2010	2011	2012	2013	2014	2015	2016	2017	2018	2019	2020	2021	2022	2023	Mar-24		
MoH	PRIMHD																									2008	2009	2010	2011	2012	2013	2014	2015	2016	2017	2018	2019	2020	2021	Jun-22					
MoH	Privately funded hospital discharges																		2001	2002	2003	2004	2005	2006	2007	2008	2009	2010	2011	2012	2013	2014	2015	2016	2017	2018	2019	2020	Dec-21						
MoH	Publicly funded hospital discharges					1988	1989	1990	1991	1992	1993	1994	1995	1996	1997	1998	1999	2000	2001	2002	2003	2004	2005	2006	2007	2008	2009	2010	2011	2012	2013	2014	2015	2016	2017	2018	2019	2020	2021	2022	Jun-23				
<b>Education and training data</b>																																													
MoE	Early childhood education participation																							2006	2007	2008	2009	2010	2011	2012	2013	2014	2015	2016	2017	2018	2019	2020	2021	2022	Aug-23				
MoE	Industry training																		2001	2002	2003	2004	2005	2006	2007	2008	2009	2010	2011	2012	2013	2014	2015	2016	2017	2018	2019	2020	2021	2022	Dec-23				
MoE	Schooling data							1990	1991	1992	1993	1994	1995	1996	1997	1998	1999	2000												2010	2011	2012	2013	2014	2015	2016	2017	2018	2019	2020	2021	2022	2023	Mar-24	
MoE	Targeted training																		2001	2002	2003	2004	2005	2006	2007	2008	2009	2010	2011	2012	2013	2014	2015	2016	2017	2018	2019	2020	2021	2022	Dec-23				
MoE	Tertiary Education											1994	1995	1996	1997	1998	1999	2000	2001	2002	2003	2004	2005	2006	2007	2008	2009	2010	2011	2012	2013	2014	2015	2016	2017	2018	2019	2020	2021	2022	Dec-23				
MoE	NSI	1984	1985	1986	1987	1988	1989	1990	1991	1992	1993	1994	1995	1996	1997	1998	1999	2000	2001	2002	2003	2004	2005	2006	2007	2008	2009	2010	2011	2012	2013	2014	2015	2016	2017	2018	2019	2020	2021	2022	2023	Mar-24			
PIAAC	Programme for the International Assessment of Adult Competencies																															2014													
<b>Benefits and social services data</b>																																													
ACC	Injury claims data											1994	1995	1996	1997	1998	1999	2000	2001	2002	2003	2004	2005	2006	2007	2008	2009	2010	2011	2012	2013	2014	2015						2020	2021	2022	2023	Mar-24		
ESP	Early Start Project																																	2016	2017	2018	2019	2020	2021	2022	Jul-23				
IR	Working for Families																	1999	2000	2001	2002	2003	2004	2005	2006	2007	2008	2009	2010	2011	2012	2013	2014	2015	2016	2017	2018	2019	2020	2021	2022	2023	Mar-24		
MSD	Benefits							1990	1991	1992	1993	1994	1995	1996	1997	1998	1999	2000	2001	2002	2003	2004	2005	2006	2007	2008	2009	2010	2011	2012	2013	2014	2015	2016	2017	2018	2019	2020	2021	2022	2023	Mar-24			
Oranga Tamariki	Child, Youth and Family							1991	1992	1993	1994	1995	1996	1997	1998	1999	2000	2001	2002	2003	2004	2005	2006	2007	2008	2009	2010	2011	2012	2013	2014	2015	2016	2017	2018	2019	2020	2021	2022	2023	Apr-24				
Oranga Tamariki	Children's Action Plan																																2013	2014	2015	2016	2017	2018	2019	2020	Mar-21				
Oranga Tamariki	Family Start																									2008	2009	2010	2011	2012	2013	2014	2015	2016	2017	2018	2019	2020	2021	2022	2023	Apr-24			
Oranga Tamariki	Youth services																																2013	2014	2015	2016	2017	2018	2019	2020	2021	2022	2023	Apr-24	
SLA	Student loans and allowances									1992	1993	1994	1995	1996	1997	1998	1999	2000	2001	2002	2003	2004	2005	2006	2007	2008	2009	2010	2011	2012	2013	2014	2015	2016	2017	2018	2019	2020	2021	2022	Dec-23				
<b>Justice data</b>																																													
Corrections	Sentencing and remand															1998	1999	2000	2001	2002	2003	2004	2005	2006	2007	2008	2009	2																	