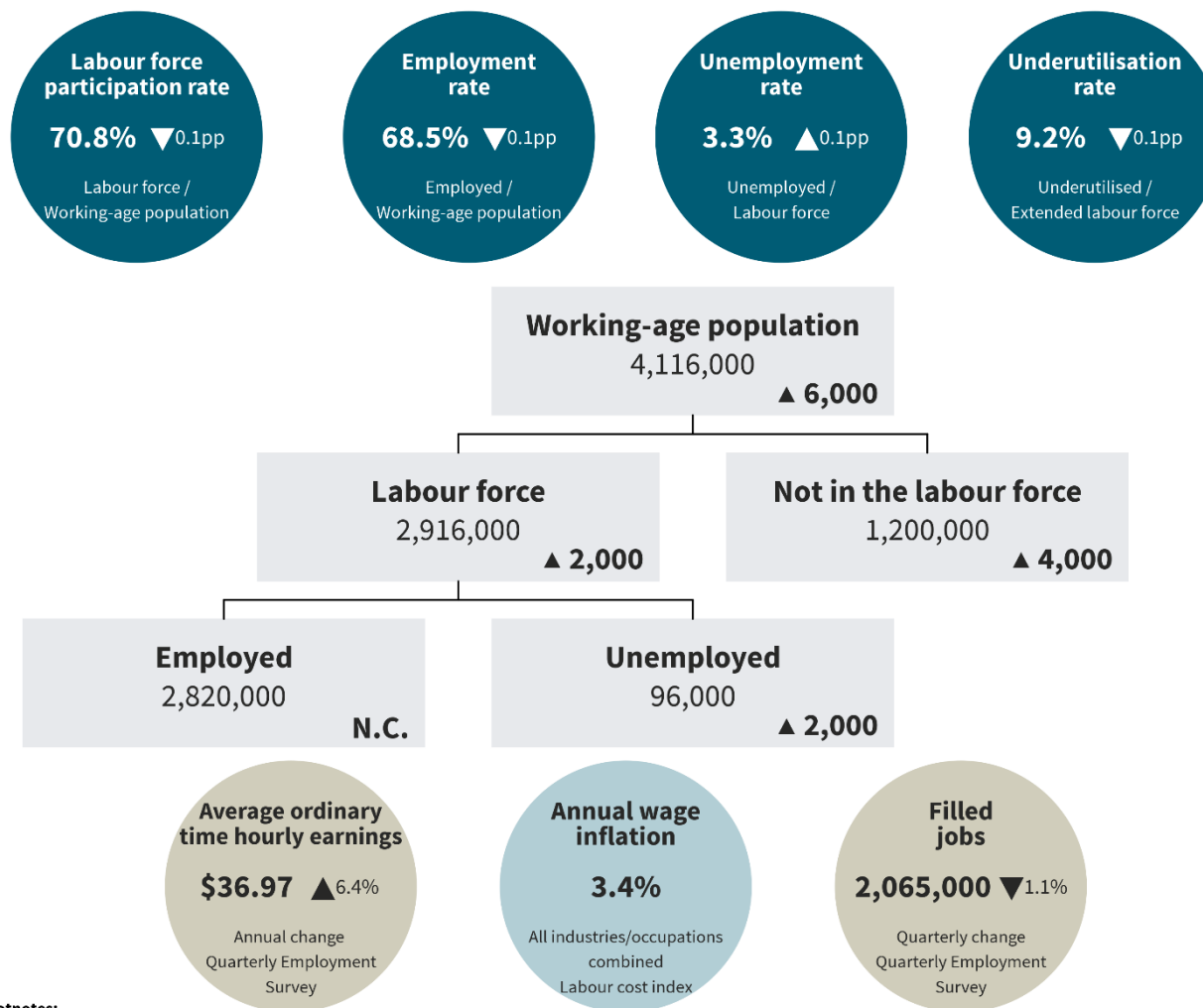


Labour market summary

June 2022 quarter, seasonally adjusted⁽¹⁾⁽²⁾⁽³⁾⁽⁴⁾



Footnotes:

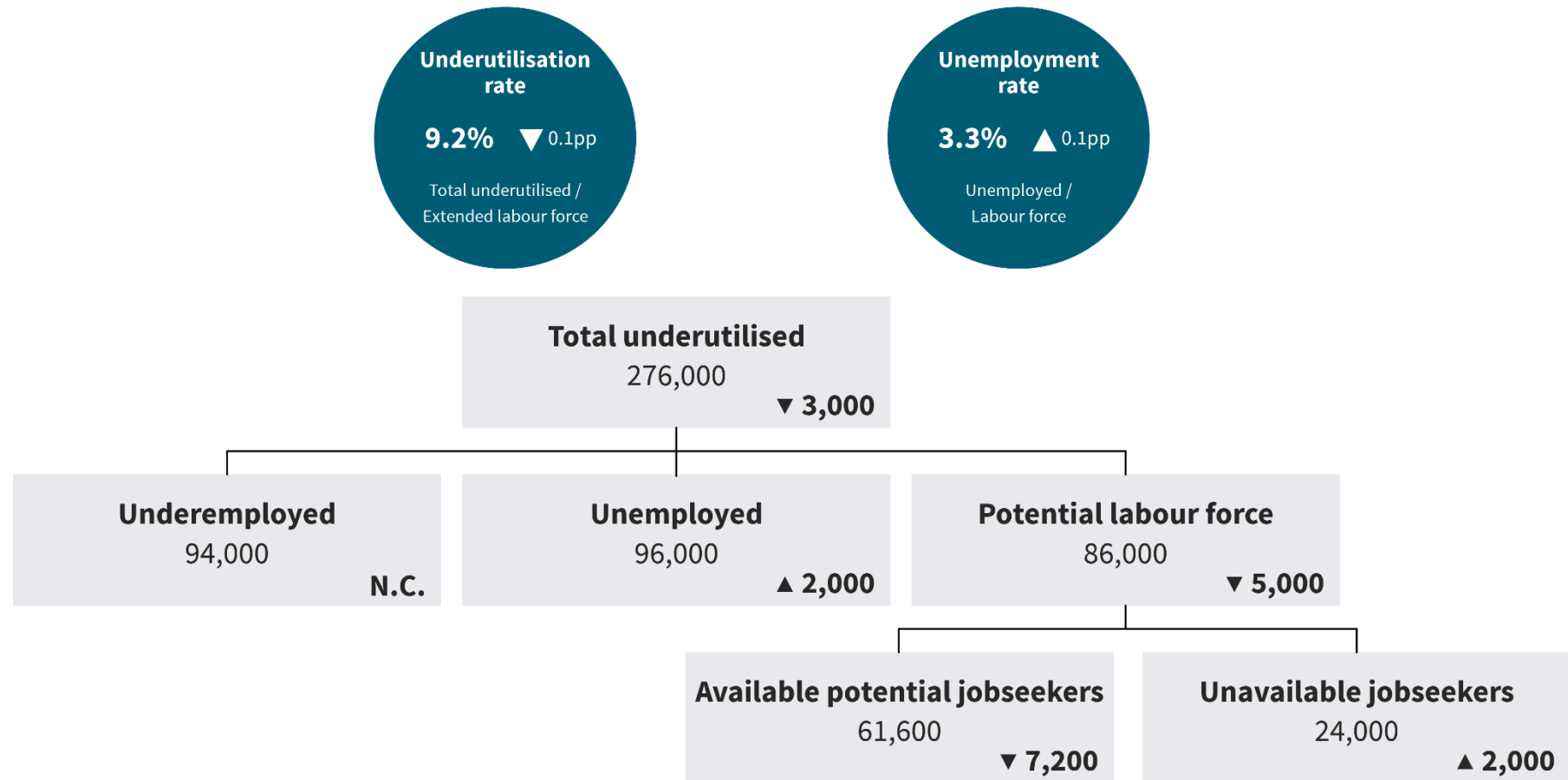
1. Household Labour Force Survey data, unless otherwise stated.
2. Average ordinary time hourly earnings and annual wage inflation are not seasonally adjusted.
3. Changes in seasonally adjusted data are quarterly.
4. Due to rounding, changes do not always sum to the published totals.

Symbol: N.C. indicates no change.

Source: Stats NZ, Household Labour Force Survey, Quarterly Employment Survey, Labour Cost Survey

Total underutilisation

June 2022 quarter, seasonally adjusted⁽¹⁾⁽²⁾⁽³⁾



Footnotes:

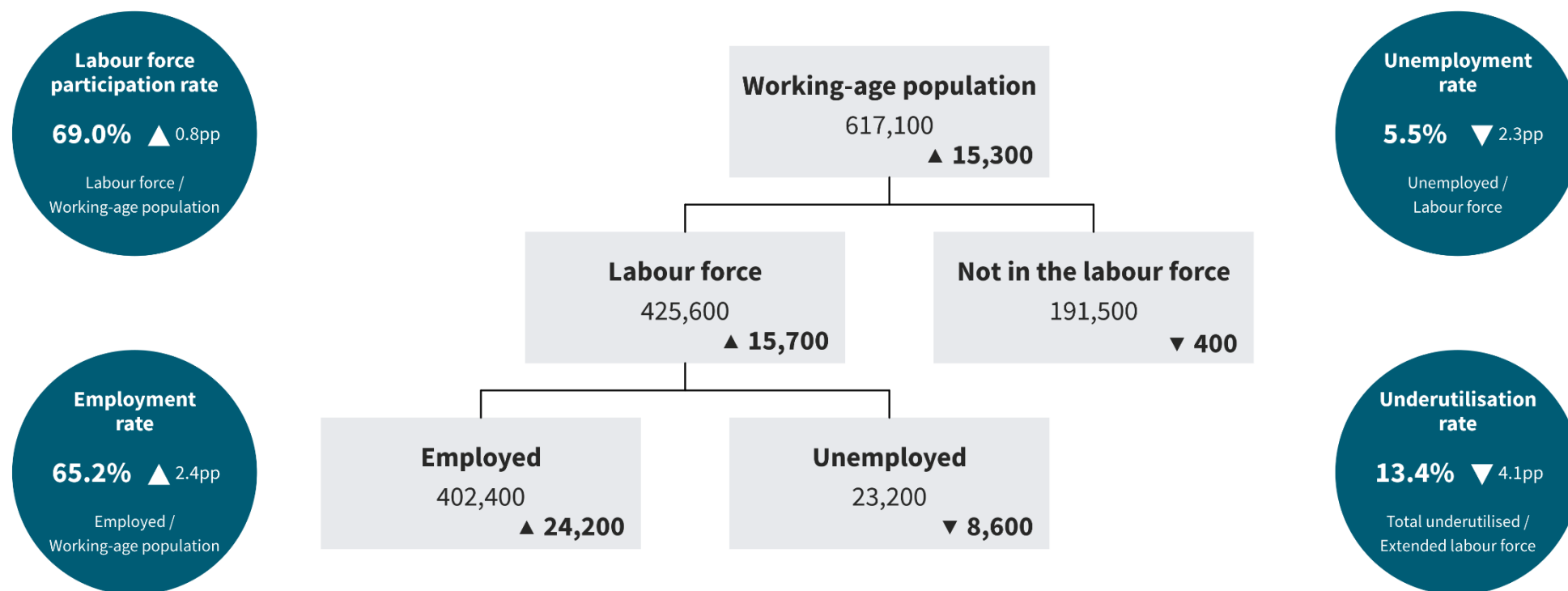
1. No seasonal pattern is evident for available potential jobseekers. Therefore, this series is not seasonally adjusted.
2. Due to rounding, changes do not always sum to the published totals.
3. All changes are quarterly.

Symbol: N.C. indicates no change

Source: Stats NZ, Household Labour Force Survey

Labour market summary – Māori

June 2022 quarter⁽¹⁾⁽²⁾⁽³⁾



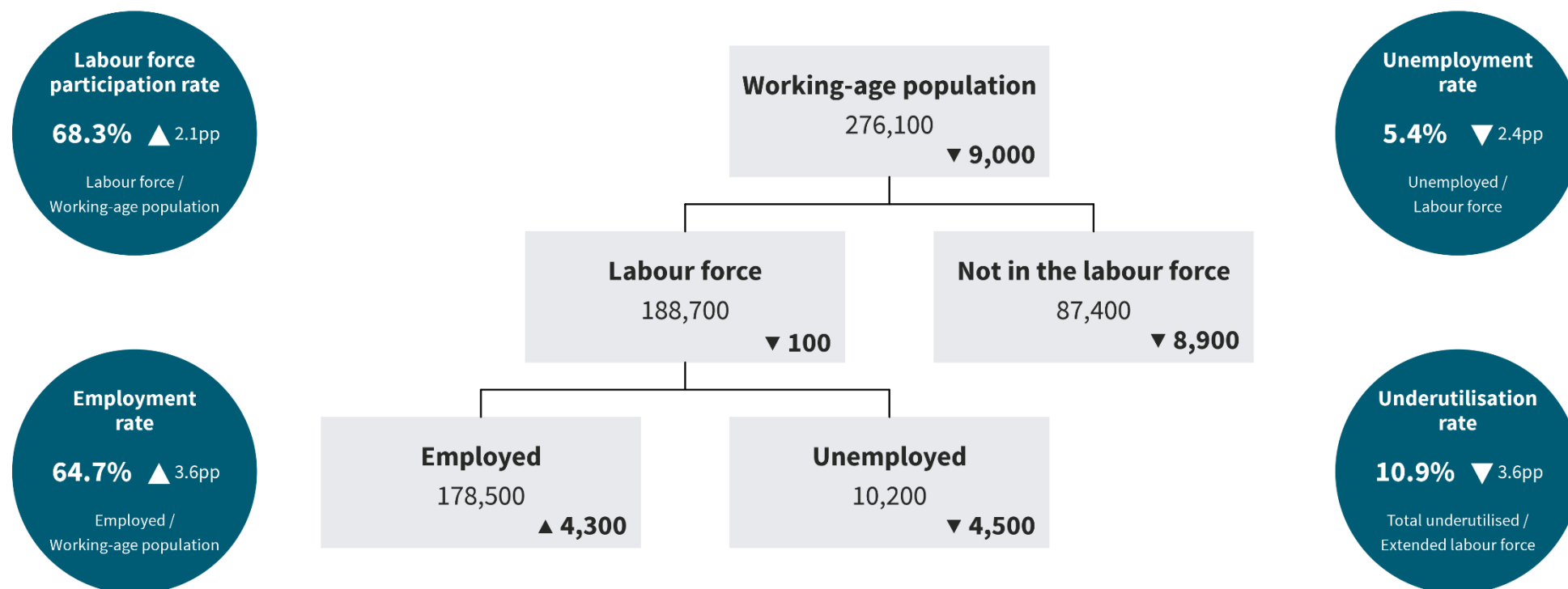
Footnotes:

1. Changes are annual and not seasonally adjusted.
2. All changes (except for the number of people not in the labour force, labour force participation rate, and employment rate) are statistically significant because they are greater than the sampling error. Note that the change in the working-age population is always significant as it is one of our benchmarked measures.
3. Due to rounding, changes do not always sum to the published totals.

Source: Stats NZ, Household Labour Force Survey

Labour market summary – Pacific peoples

June 2022 quarter⁽¹⁾⁽²⁾⁽³⁾



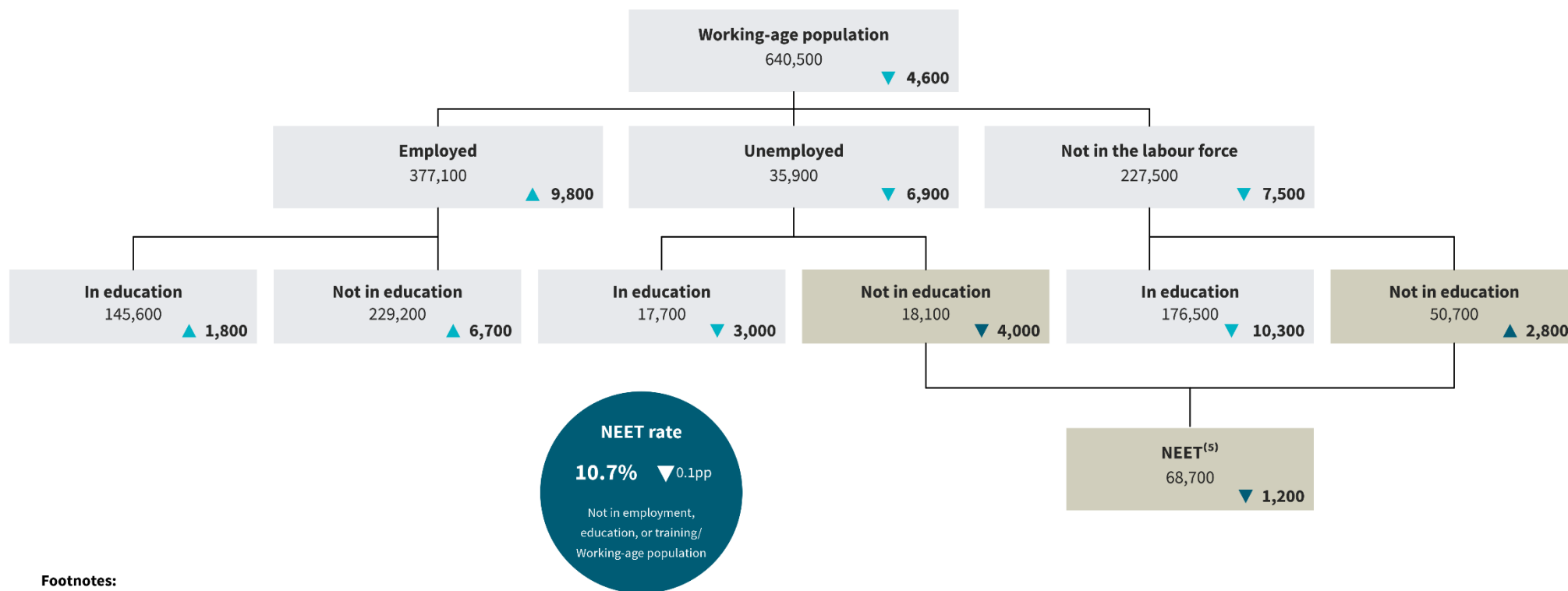
Footnotes:

1. Changes are annual and not seasonally adjusted.
2. The only statistically significant changes in this diagram are the decreases in the number of people unemployed, unemployment and underutilisation rates, and increase in employment rate. Other changes are not statistically significant because they are less than the sampling error. Note that Pacific peoples' working-age population is not benchmarked.
3. Due to rounding, changes do not always sum to the published totals.

Source: Stats NZ, Household Labour Force Survey

Labour force and education status of people aged 15–24 years

June 2022 quarter⁽¹⁾⁽²⁾⁽³⁾⁽⁴⁾



Footnotes:

- Changes are annual and not seasonally adjusted.
- All changes (except for unemployed and the working-age population) are not statistically significant because they are less than the sampling error for that change.
Note that the change in the working-age population is always significant as one of our benchmarked measures.
- Due to rounding, changes do not always sum to the published totals.
- Those who have not specified an education status are included in the totals only.
- NEET refers to those people aged 15–24 years not in employment, education, or training.

Source: Stats NZ, Household Labour Force Survey