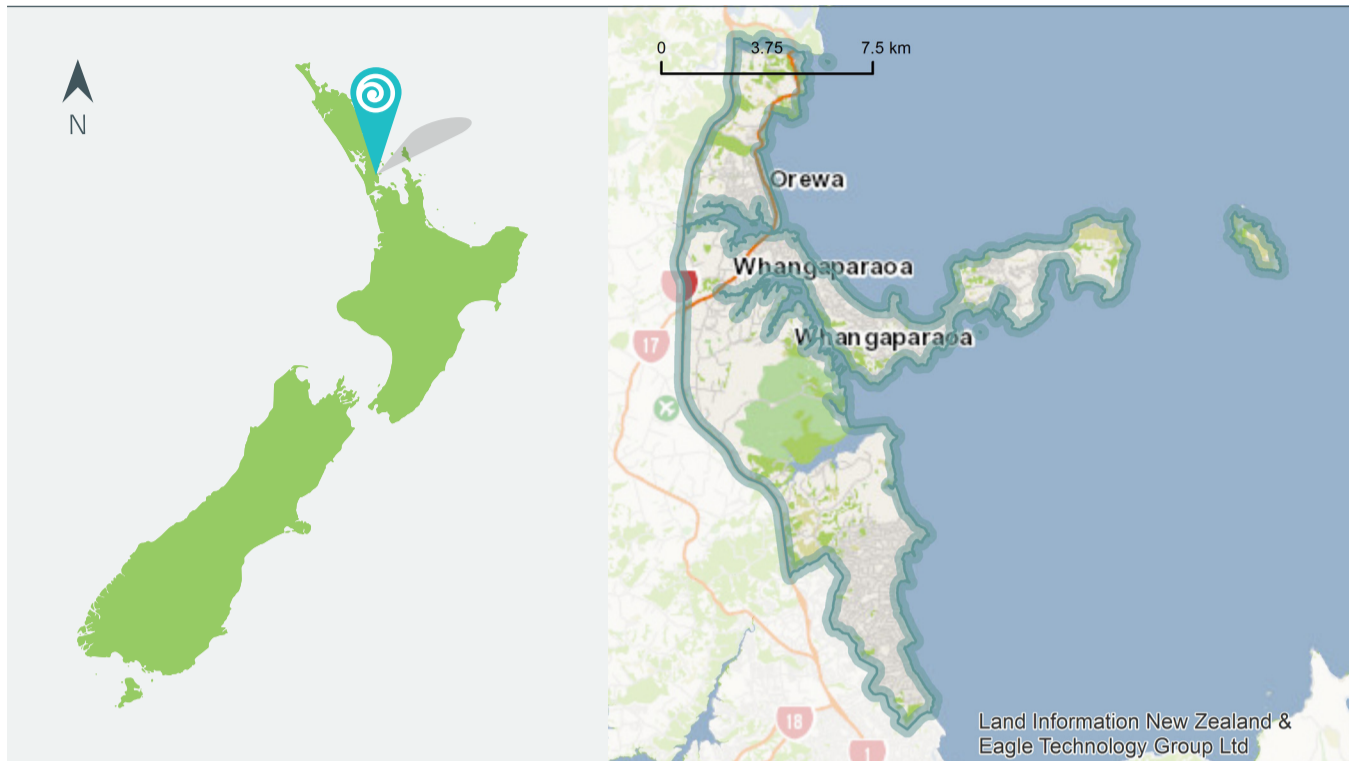


QuickStats about Hibiscus and Bays Local Board Area



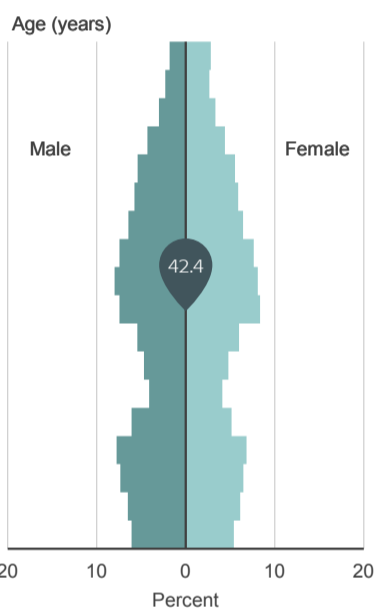
Total population
89,832 ↑ 9.7% since 2006

Māori population
5,001 ↑ 16.0% since 2006

Total dwellings
35,634 ↑ 7.5% since 2006

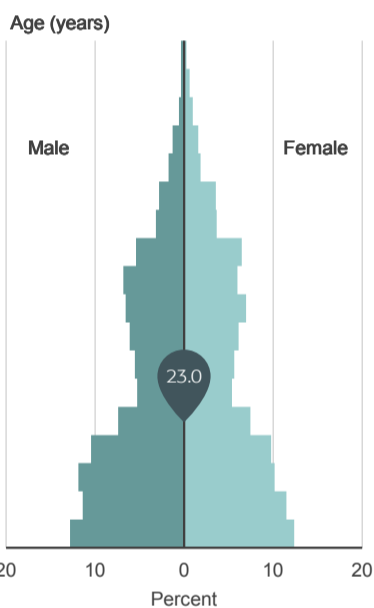
Age and sex of people

Hibiscus and Bays Local Board Area
2013 Census



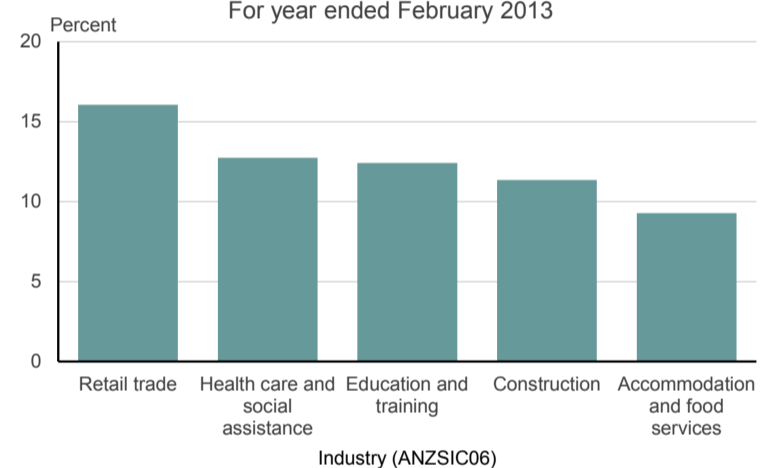
Age and sex of Māori

Hibiscus and Bays Local Board Area
2013 Census



Top five industries in Hibiscus and Bays Local Board Area

By employee count
For year ended February 2013



How Hibiscus and Bays Local Board Area compares with the national average

Individuals

Major ethnic groups

	European	88.5%	vs	74.0%
	Māori	5.8%	vs	14.9%
	Pacific peoples	1.8%	vs	7.4%
	Asian	8.3%	vs	11.8%
	Middle Eastern/ Latin American/ African	0.9%	vs	1.2%
	Other	1.5%	vs	1.7%

Percent born overseas

37.0% vs 25.2%

Percent of people with a formal qualification*

86.0% vs 79.1%

Median income*

\$31,700 vs \$28,500

*For people aged 15 years and over.

Households

Percent of households that own their dwelling*

74.1% vs 64.8%

Median weekly rent

\$400 vs \$280

Percent of households with internet access

85.8% vs 76.8%

*Or hold it in a family trust.