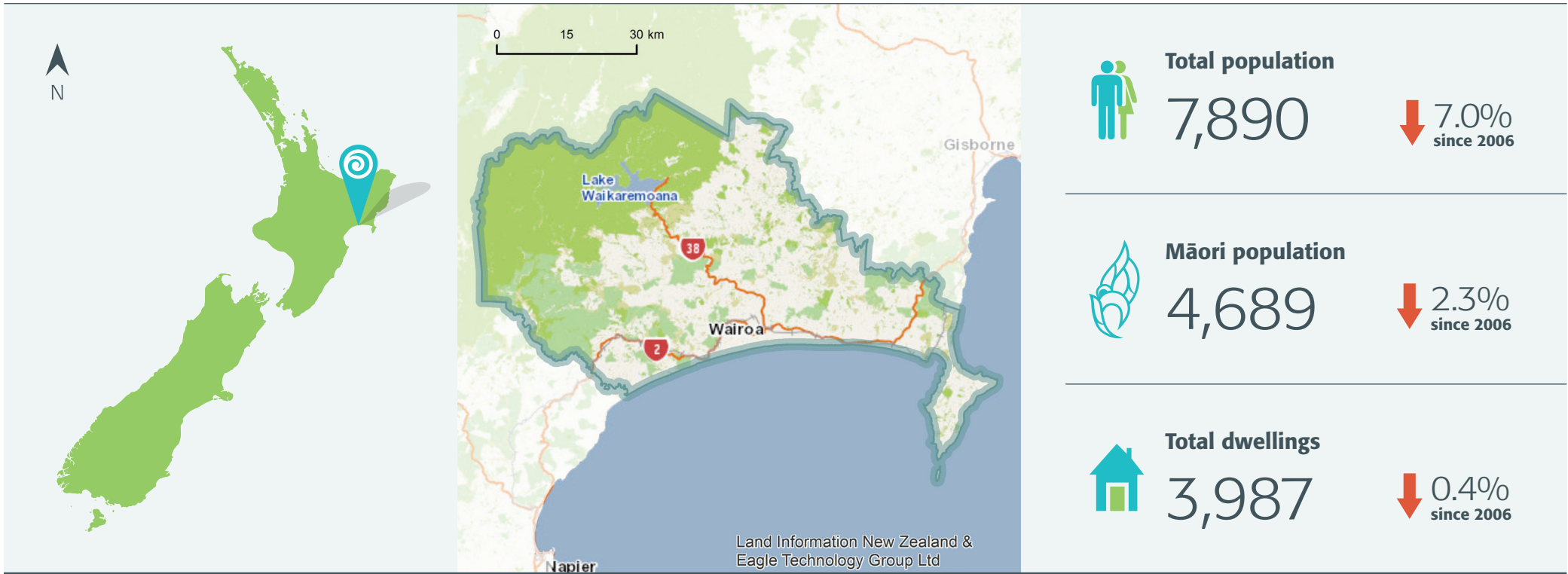
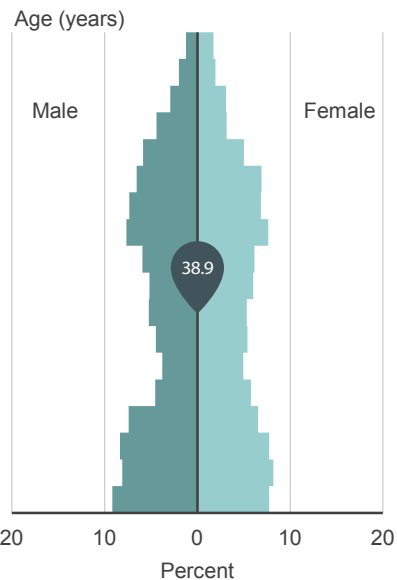


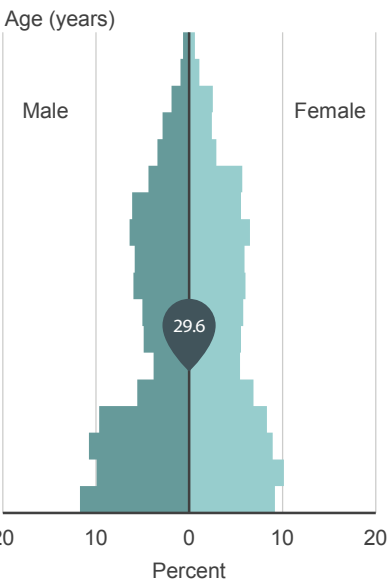
QuickStats about Wairoa District



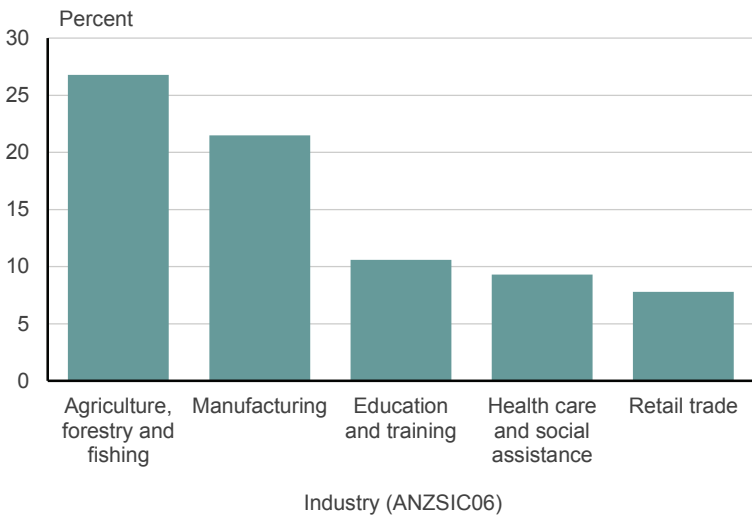
Age and sex of people
Wairoa District
2013 Census



Age and sex of Māori
Wairoa District
2013 Census



Top five industries in Wairoa District
By employee count
For year ended February 2013



How Wairoa District compares with the national average

Individuals

Major ethnic groups

	European	49.5%	vs	74.0%
	Māori	62.9%	vs	14.9%
	Pacific peoples	2.2%	vs	7.4%
	Asian	1.7%	vs	11.8%
	Middle Eastern/ Latin American/ African	0.1%	vs	1.2%
	Other	1.2%	vs	1.7%

Percent born overseas

6.1% vs 25.2%

Percent of people with a formal qualification*

62.6% vs 79.1%

Median income*

\$22,000 vs \$28,500

*For people aged 15 years and over.

Households

Percent of households that own their dwelling*

57.3% vs 64.8%

Median weekly rent

\$140 vs \$280

Percent of households with internet access

54.8% vs 76.8%

*Or hold it in a family trust.